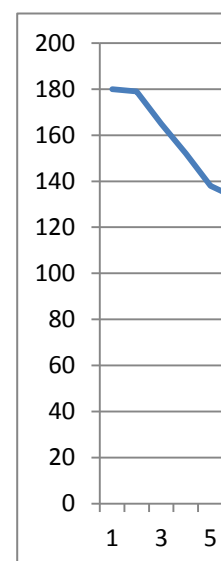
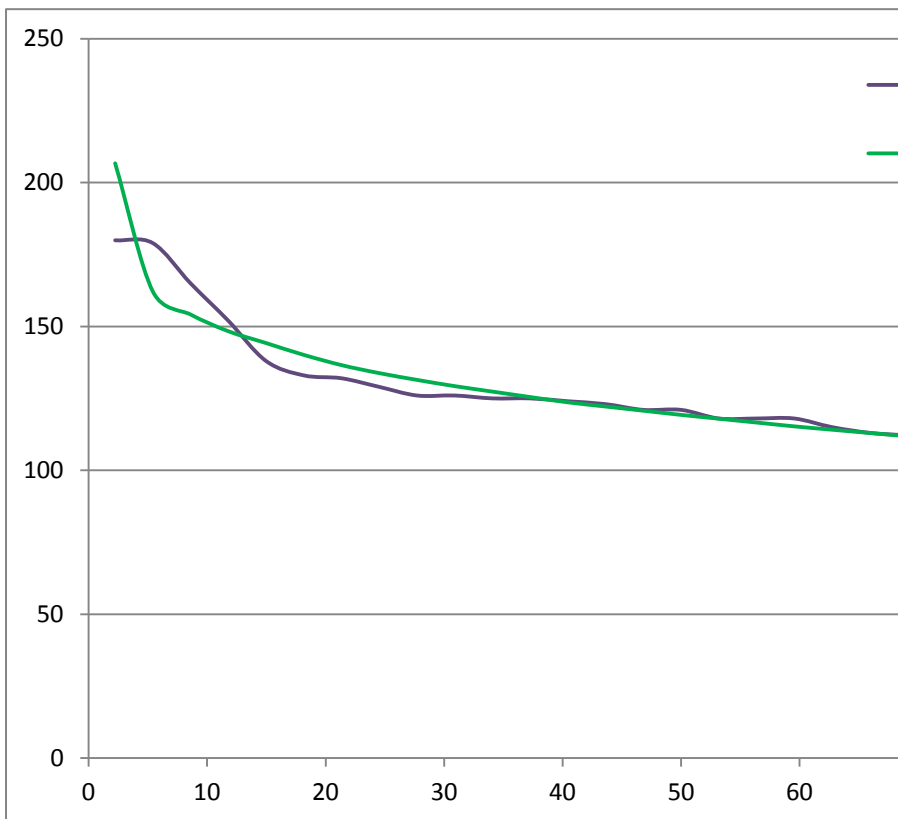


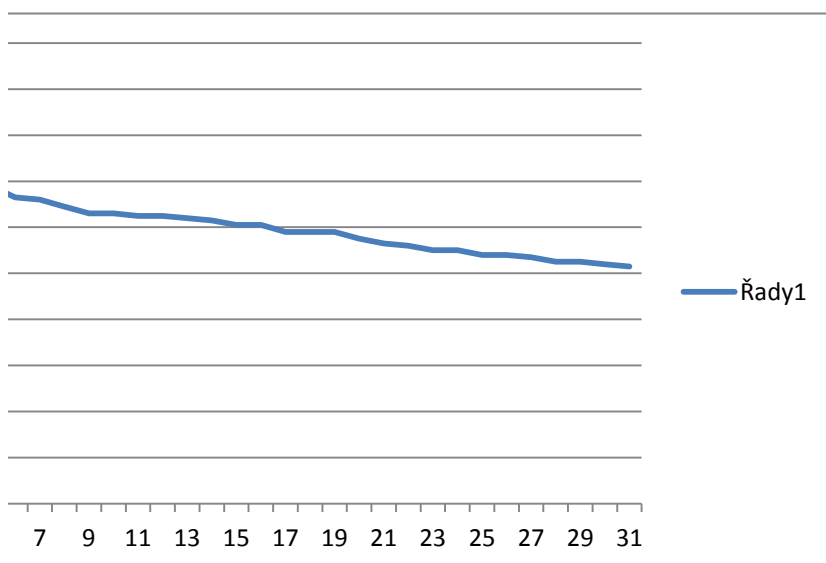
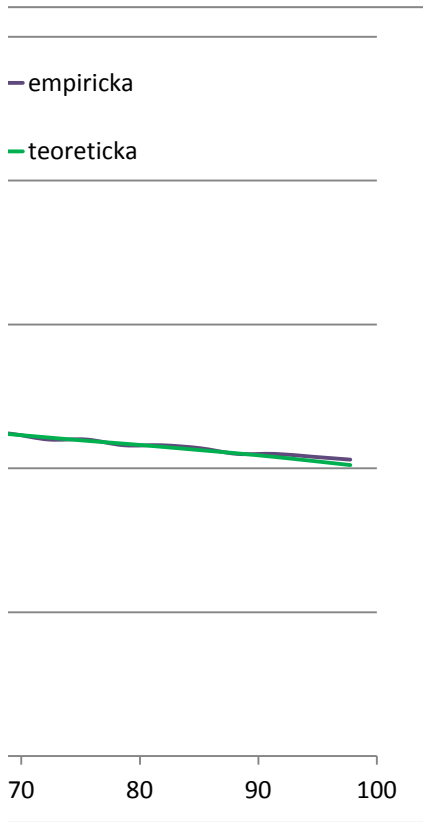
Pořadí	Den	Q [m3.s-1]	P	ki	(ki-1)2	(ki-1)3	Φsp
1	28	180	2.22930	1.44822	0.20090	0.09005	4.15299
2	29	179	5.41401	1.44018	0.19376	0.08529	1.90783
3	30	165	8.59873	1.32754	0.10728	0.03514	1.50656
4	27	152	11.78344	1.22294	0.04970	0.01108	1.21408
5	1	138	14.96815	1.11030	0.01217	0.00134	1.00707
6	26	133	18.15287	1.07008	0.00491	0.00034	0.80006
7	12	132	21.33758	1.06203	0.00385	0.00024	0.62115
8	23	129	24.52229	1.03789	0.00144	0.00005	0.48102
9	2	126	27.70701	1.01376	0.00019	0.00000	0.36255
10	25	126	30.89172	1.01376	0.00019	0.00000	0.25325
11	13	125	34.07643	1.00571	0.00003	0.00000	0.15771
12	18	125	37.26115	1.00571	0.00003	0.00000	0.06217
13	19	124	40.44586	0.99766	0.00001	0.00000	-0.03025
14	11	123	43.63057	0.98962	0.00011	0.00000	-0.10350
15	17	121	46.81529	0.97353	0.00070	-0.00002	-0.17675
16	24	121	50.00000	0.97353	0.00070	-0.00002	-0.25000
17	14	118	53.18471	0.94939	0.00256	-0.00013	-0.31688
18	20	118	56.36943	0.94939	0.00256	-0.00013	-0.38376
19	16	118	59.55414	0.94939	0.00256	-0.00013	-0.45064
20	15	115	62.73885	0.92525	0.00559	-0.00042	-0.50930
21	4	113	65.92357	0.90916	0.00825	-0.00075	-0.56662
22	5	112	69.10828	0.90112	0.00978	-0.00097	-0.62395
23	22	110	72.29299	0.88502	0.01322	-0.00152	-0.68127
24	9	110	75.47771	0.88502	0.01322	-0.00152	-0.73764
25	31	108	78.66242	0.86893	0.01718	-0.00225	-0.78860
26	10	108	81.84713	0.86893	0.01718	-0.00225	-0.84325
27	3	107	85.03185	0.86089	0.01935	-0.00269	-0.90057
28	6	105	88.21656	0.84480	0.02409	-0.00374	-0.95790
29	7	105	91.40127	0.84480	0.02409	-0.00374	-1.02083
30	21	104	94.58599	0.83675	0.02665	-0.00435	-1.09089
31	8	103	97.77070	0.82870	0.02934	-0.00503	-1.16312
		3853			0.79158	0.193889856	

Qp	Pv
206.77343	MV
162.18205	MV
154.21230	MV
148.40324	V
144.29186	V
140.18048	V
136.62699	V
133.84390	V
131.49093	V
129.32012	V
127.42256	V
125.52500	V
123.68943	V
122.23463	P
120.77984	P
119.32504	P
117.99675	P
116.66846	P
115.34017	P
114.17507	S
113.03653	S
111.89800	S
110.75946	S
109.63990	S
108.62787	S
107.54246	S
106.40393	S
105.26539	S
104.01553	MS
102.62399	MS
101.18944	MS

124.2903 prumerny prutok  
0.159796 variacni koeficient  
1.583925 koeficient asymetrie



# empirická křivka



<b>p [%]</b>	<b>slovní označení</b>	<b>symbol</b>
0-10	mimořádně vodný	MV
Nov-40	vodný	V
41-60	průměrně vodný	P
61-90	málo vodný	S
91-100	mimořádně málo vodný	MS

