

Topic 6

Land Use / Land Cover

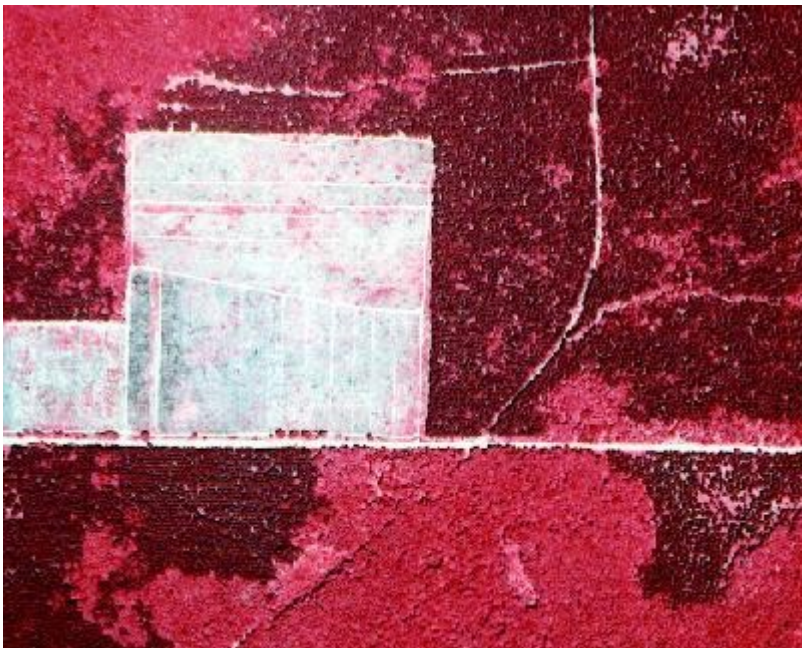
One of the most important uses of image interpretation in remote sensing is the production of *Land Use* and *Land Cover* maps.

Land Use: refers to the *purpose the land serves*, for example, *recreation, wildlife habitat, or agriculture, urban development*, and mostly areas impacted by human activity.

Knowledge of land use helps us to develop strategies to *balance conservation, conflicting uses*, and *developmental pressures*. Some of the issues which are of concern include the removal or *disturbance of productive land, urban encroachment*, and *depletion of forests*.

Land Cover: refers to the *surface cover* whether *vegetation, water, bare soil, urban development* or other. Identifying, delineating and mapping land cover is important for *global monitoring studies, resource management*, and *planning activities*.

LU/LC Example 1: Portion of a *CIR* Airphoto, *Hiawatha National Forest*, Michigan



LU/LC Example 2: Portion of a B&W Airphoto, *Sault Ste. Marie*, Michigan



Land Use / Land Cover Classification Systems

For practical reasons, land use and land cover classification was combined into a single hierarchical system by the USGS and referred to as the *USGS Land Use Land Cover Classification System*.

USGS LU/LC Classification: The classification systems consists of four Levels.

USGS Level I is the most general and allows for *land classification at a small scale* (>1:250,000) and is used for *satellite imagery (Landsat)*.

	Level I Categories
1	Urban or Built-up Land
2	Agricultural Land
3	Rangeland
4	Forest Land
5	Water
6	Wetland
7	Barren Land

8	Tundra
9	Perennial Ice or Snow

USGS Level II is a subdivision of Level I categories into related classes. This level of generalization is useful for *airphotos* at scales of about **1:80,000**.

Level II Categories: (from *Michigan Land/Use Cover Classification System*)

I URBAN & BUILT UP

- 11 Residential
- 12 Commercial, Services, & Institutional
- 13 Industrial
- 14 Transportation, Communication & Utilities
- [15] Map Industrial Parks under appropriate category in Commercial Services & Institutional (12) or Industrial (13)
- 16 Mixed
- 17 Extractive
- 19 Open & Other

2 AGRICULTURAL LAND

- 21 Cropland, Rotation & Permanent Pasture
- 22 Orchards, Bush-Fruits, Vineyards & Ornamental Horticulture Areas
- 23 Confined Feeding Operations
- [28] Inactive Land (These plant communities will be mapped under herbaceous, rangelands (31).
- 29 Other Agricultural Land

3 RANGELAND

- 31 Herbaceous Rangeland
- 32 Shrub Rangeland

4 FOREST LAND

- 41 Broadleaved Forest (generally deciduous)
- 42 Coniferous Forest
- 43 Mixed Conifer-Broadleaved Forest

5 WATER

- 51 Streams & Waterways
- 52 Lakes
- 53 Reservoirs
- 54 Great Lakes

6 WETLANDS

- 61 Forested (wooded) Wetlands
- 62 Non-Forested (non-wooded) Wetlands

7 BARREN

- 71 Salt Flats (not applicable to Michigan)
- 72 Beaches & Riverbanks
- 73 Sand Other than Beaches
- 74 Bare Exposed Rock

75 Transitional Areas

79 Other

8 TUNDRA (not applicable to Michigan)

9 PERMANENT SNOW & ICE (not applicable to Michigan)

Level III is suitable for classifying images at scales ranging from **1:20,000 to 1:80,000**. The *categories* are designed to be **adaptable** to the local needs of public agencies.

Level IV is most useful for airphotos at scales larger than **1:20,000**. The categories are designed to be **adaptable** to the local needs of public agencies.

Level I,II, III and IV Classification Example

4 Forest Land (Level I)

42 Coniferous Forest (Level II)

421 Upland conifers (Level III)

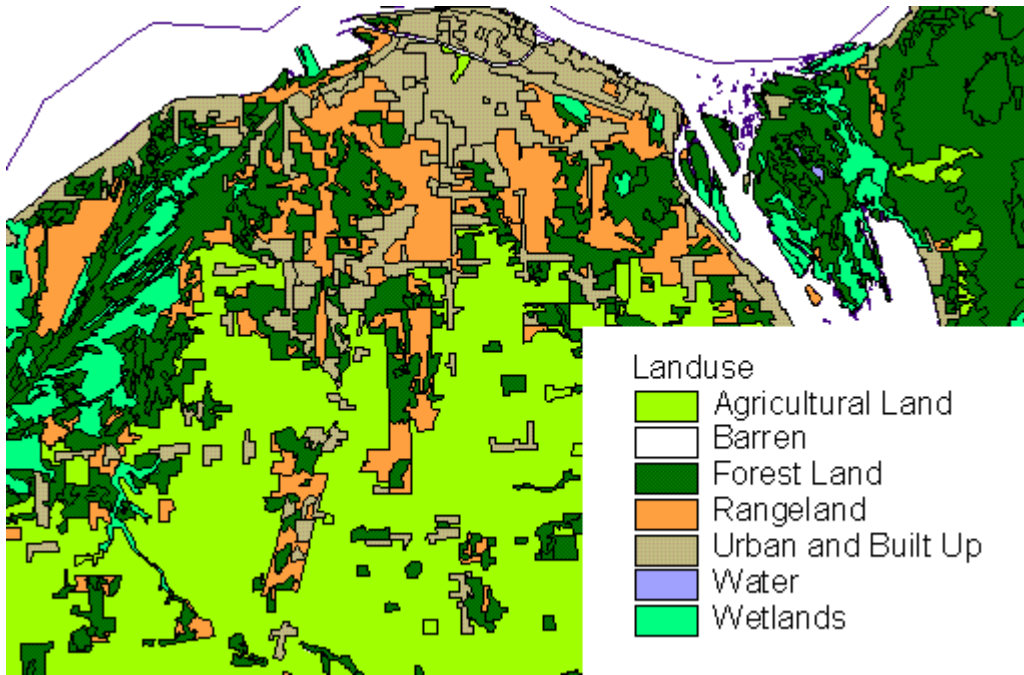
- 4211 White pine predominates (Level IV)
- 4212 Red pine predominates (Level IV)
- 4213 Jack pine predominates (Level IV)
- 4214 Scotch pine predominates (Level IV)
- 4215 White spruce predominates (Level IV)
- 4219 Other (Level IV)

422 Lowland conifers (Level III)

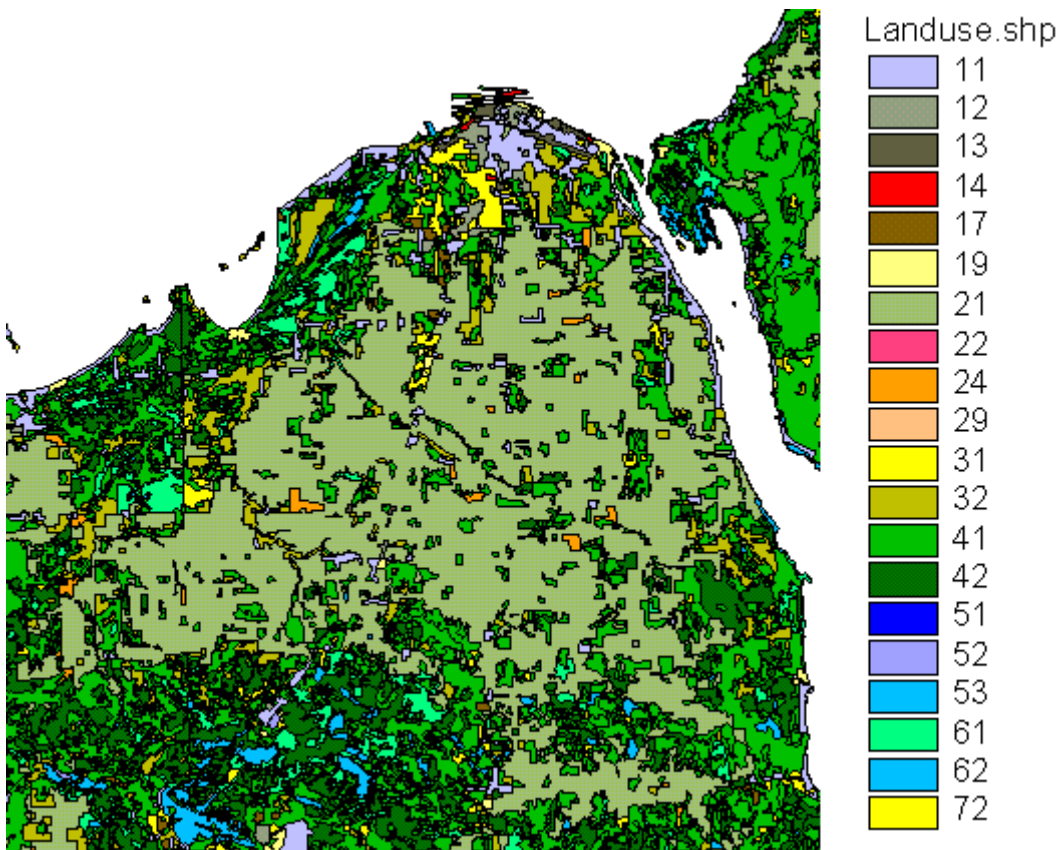
- 4221 Cedar predominates (Level IV)
- 4222 Black spruce predominates (Level IV)
- 4223 Tamarack Predominates (Level IV)
- 4224 Balsam fir-white spruce predominates (Level IV)
- 4225 Balsam fir predominates (Level IV)
- 4229 Other (Level IV)

Michigan Land Use/Cover Classification

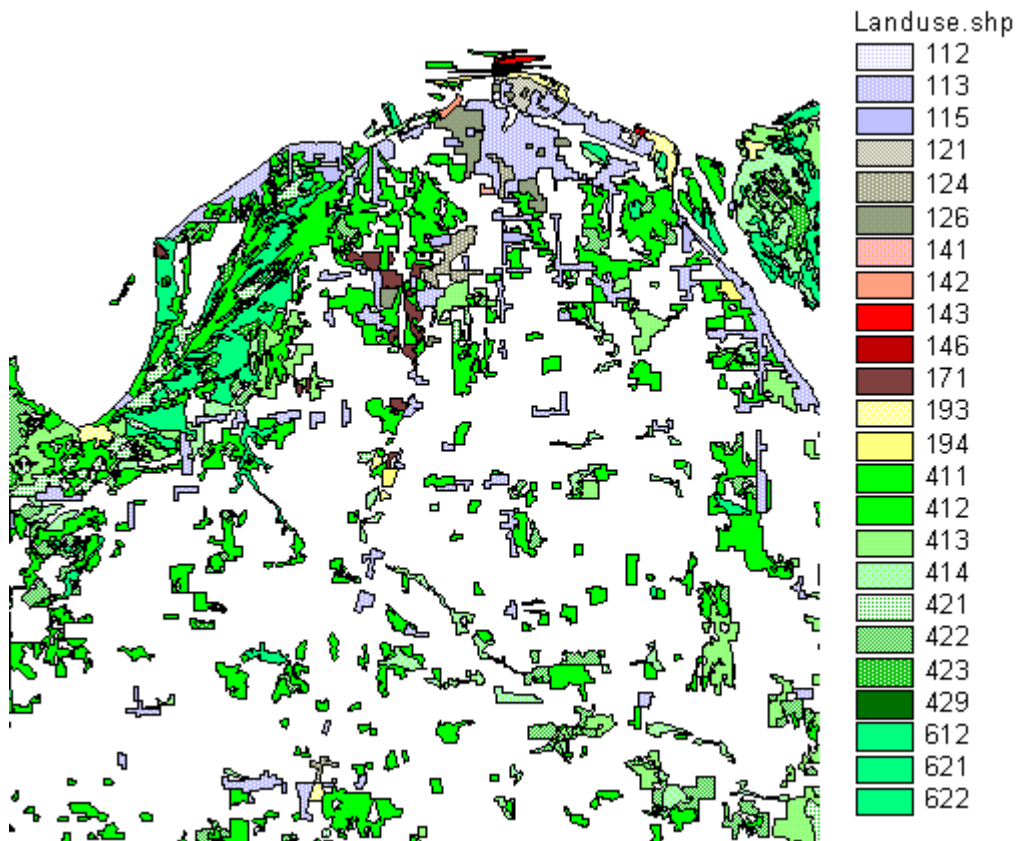
Chippewa County Level I



Chippewa County Level II



Chippewa County Level III



Limitations in Land Use / Land Cover Mapping

The classification level used for Land use and land cover mapping and the *accuracy* attainable is dependent on a number of *important factors* such as *image scale*, *season*, and *interpretability*.

Image Scale: the ability to classify a feature will vary with the image scale which affects the classification level that can be used.

Seasonal Variations: Vegetation characteristics vary with the season which affects the ease of interpretation.

Interpretability: classification of features should be repeatable between interpreters. The *precise boundaries* within and between classes may be *gradational* making this difficult to achieve.

Michigan Resource Inventory Program

This program was established to gather the best available information about the *status of land* and *water resources* and have it available for private and public use.

Several inventories of information were collected such as: *Topographic Data, Land Use /Land Cover Inventory, Mineral Resource Inventory, Soil Survey Data, and Forest Inventory.*

Each of these inventories form a *computerized database* which is accessible using *Geographic Information Systems* and represented as '*layers*' or '*overlays*' which can be queried and analysed.

References:

Gersmehl: p. 67 - 98

Arnold: p. 36 - 49