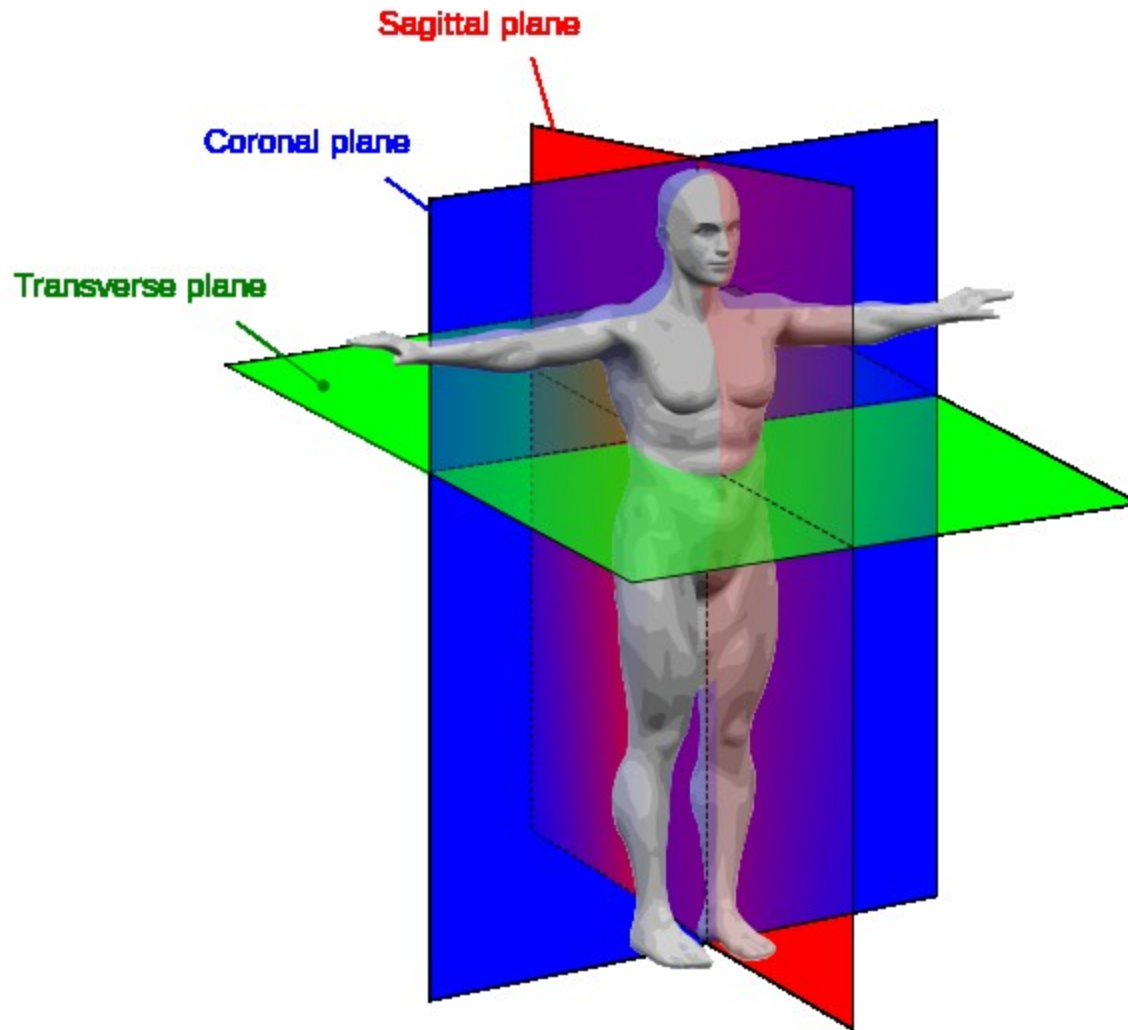
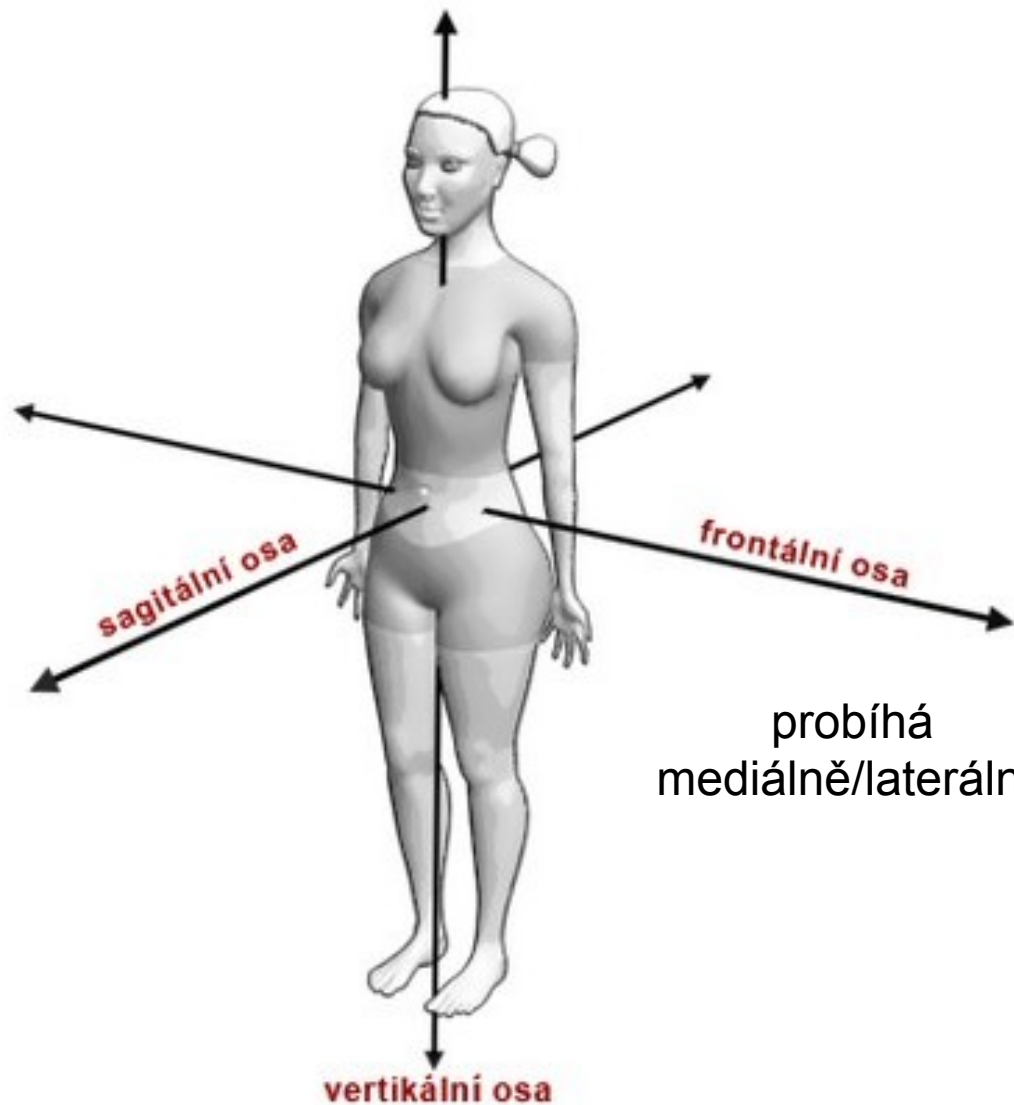


Orientace na lidském těle

Základní roviny:



Osy těla:

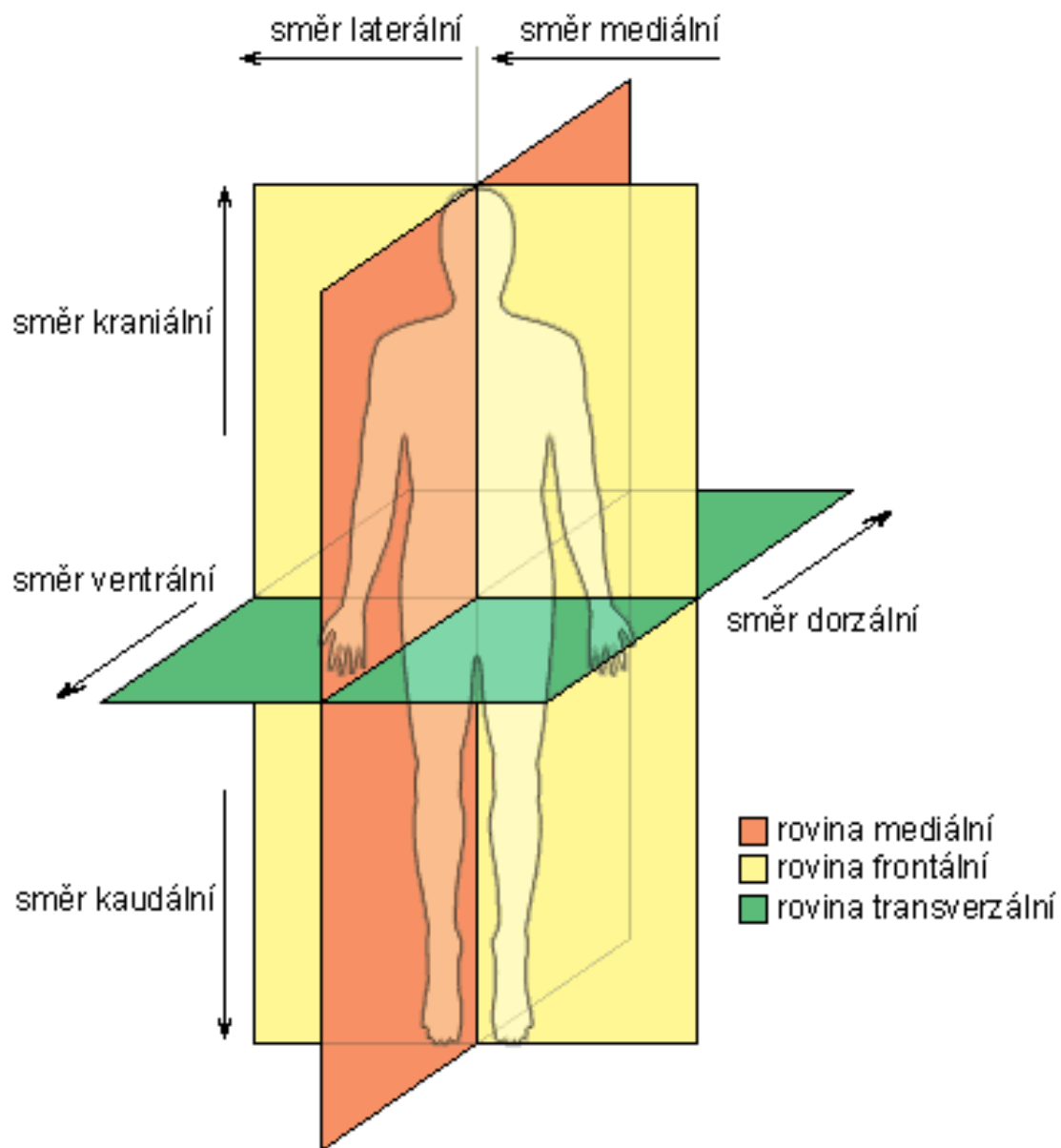


probíhá anterior/posterior

probíhá
mediálně/laterálně

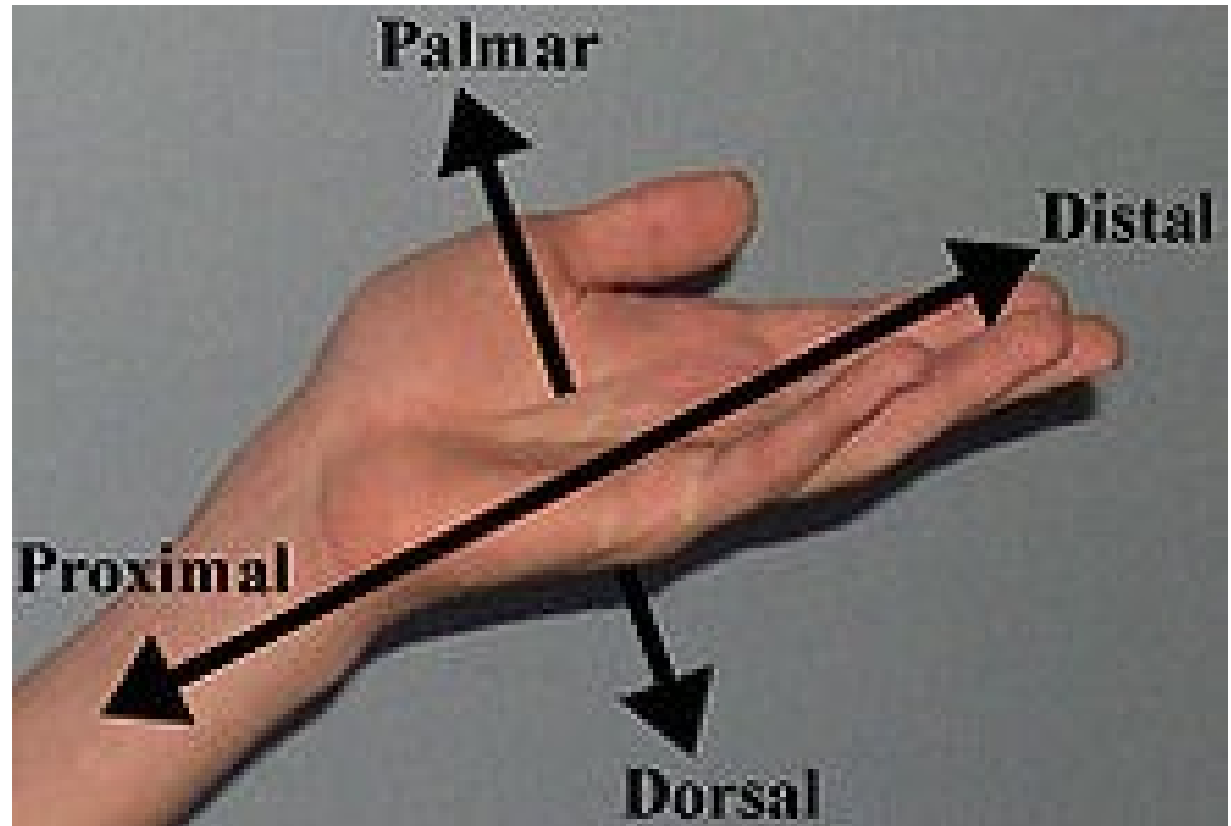
probíhá
superior/inferior

Směry:



Směry na horní končetině a ruce:

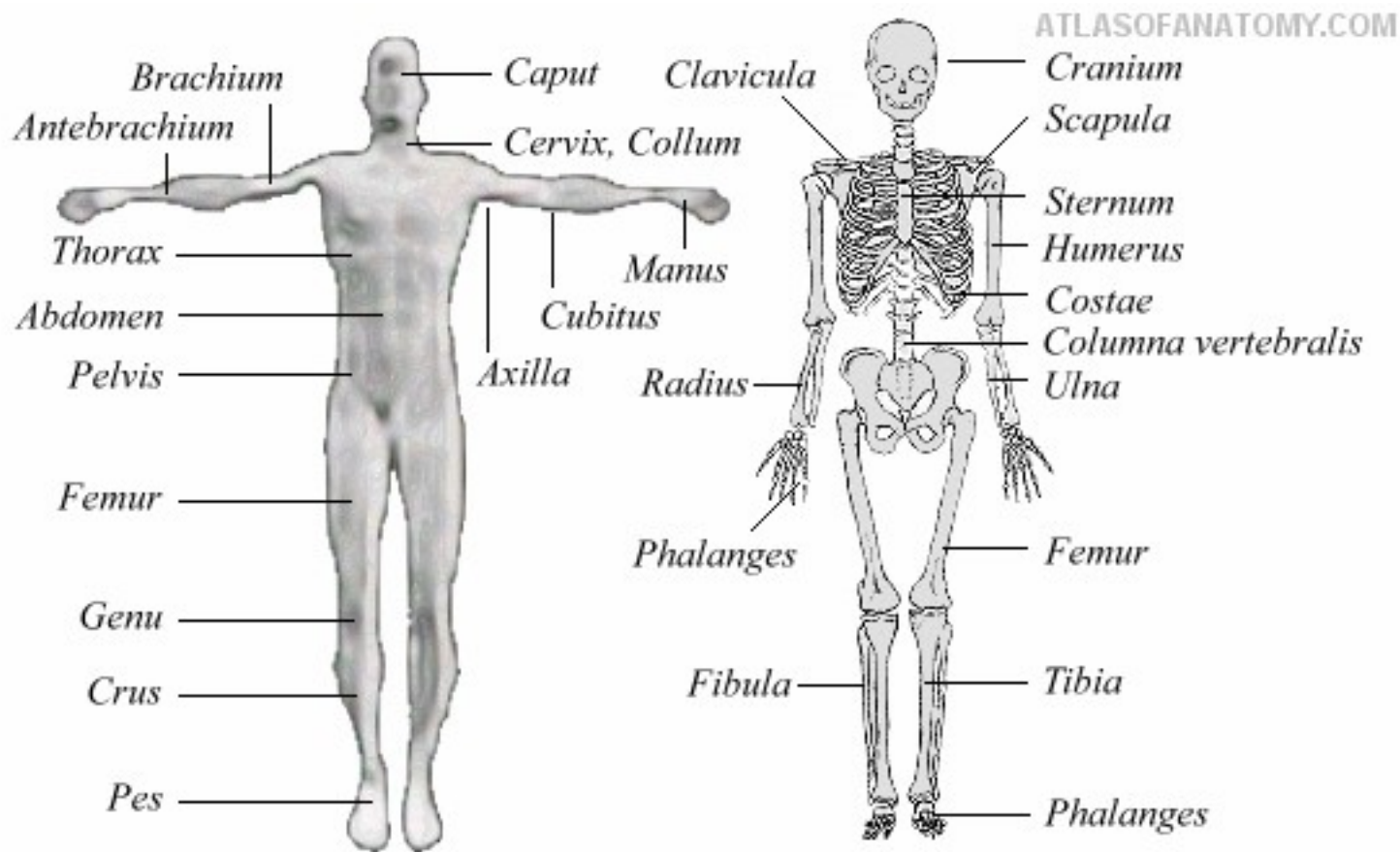
- Palmaris
- Dorsalis
- Proximalis
- Distalis
- Radialis
- Ulnaris



Směry na dolní končetině a noze:

- Plantaris
- Dorsalis
- Distalis
- Proximalis
- Tibialis
- Fibularis



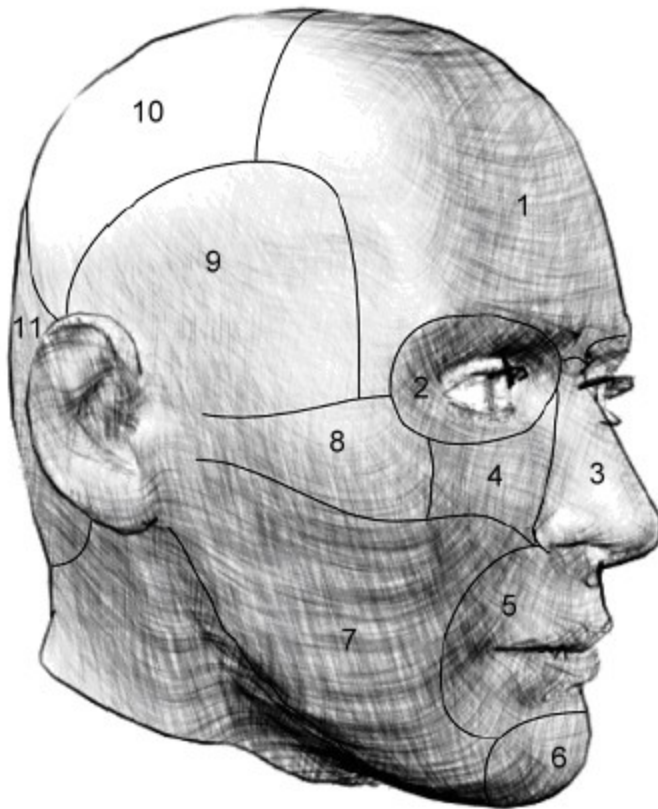


Krajiny tělní: regiones capitis

ATLASOFANATOMY.COM

Regiones capitis

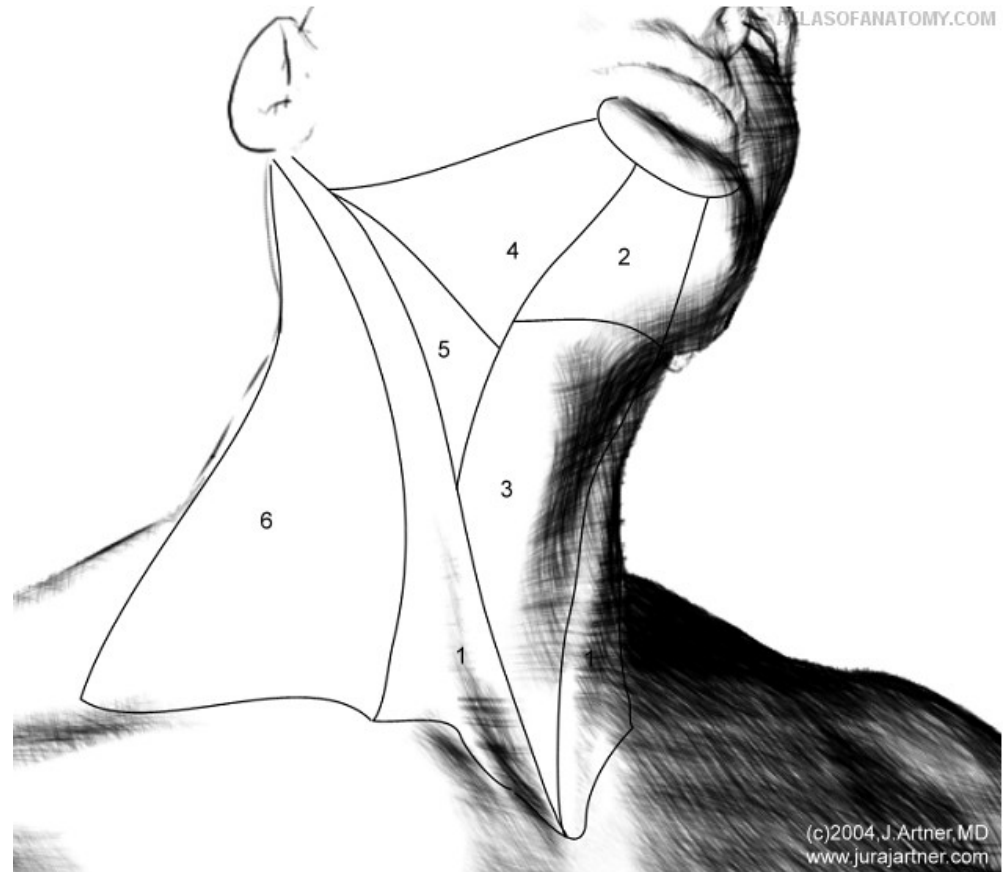
Reg. frontalis (1),
Reg. orbitalis (2),
Reg. nasalis (3),
Reg. infraorbitalis (4),
Reg. oralis (5),
Reg. mentalis (6),
Reg. buccalis (7),
Reg. zygomatica (8),
Reg. temporalis (9),
Reg. parietalis (10),
Reg. occipitalis (11)



(c)2004, J. Artner, MD
www.jurajartner.com

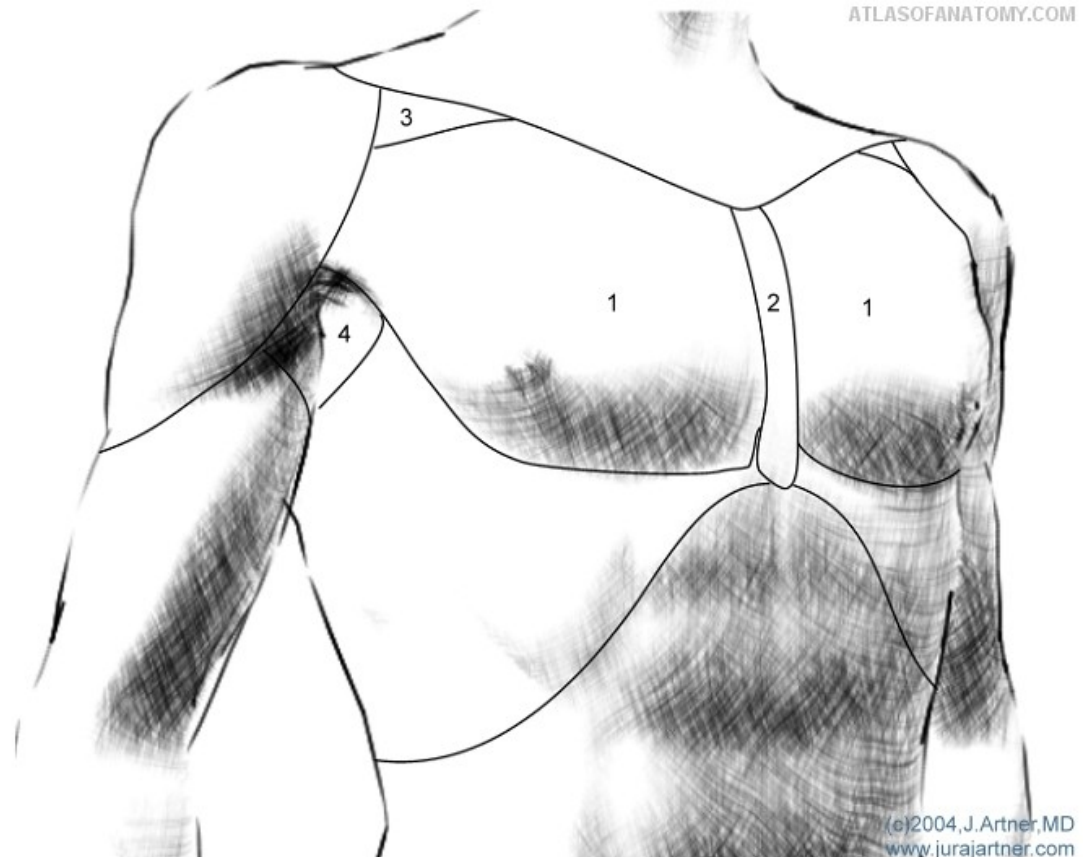
Regiones Colli

- 1 - Regio sternocleidomastoidea,
- 2 - Trigonum submentale,
- 3 - Trigonum musculare,
- 4 - Trigonum submandibulare,
- 5 - Trigonum caroticum,
- 6 - Regio cervicalis lateralis.



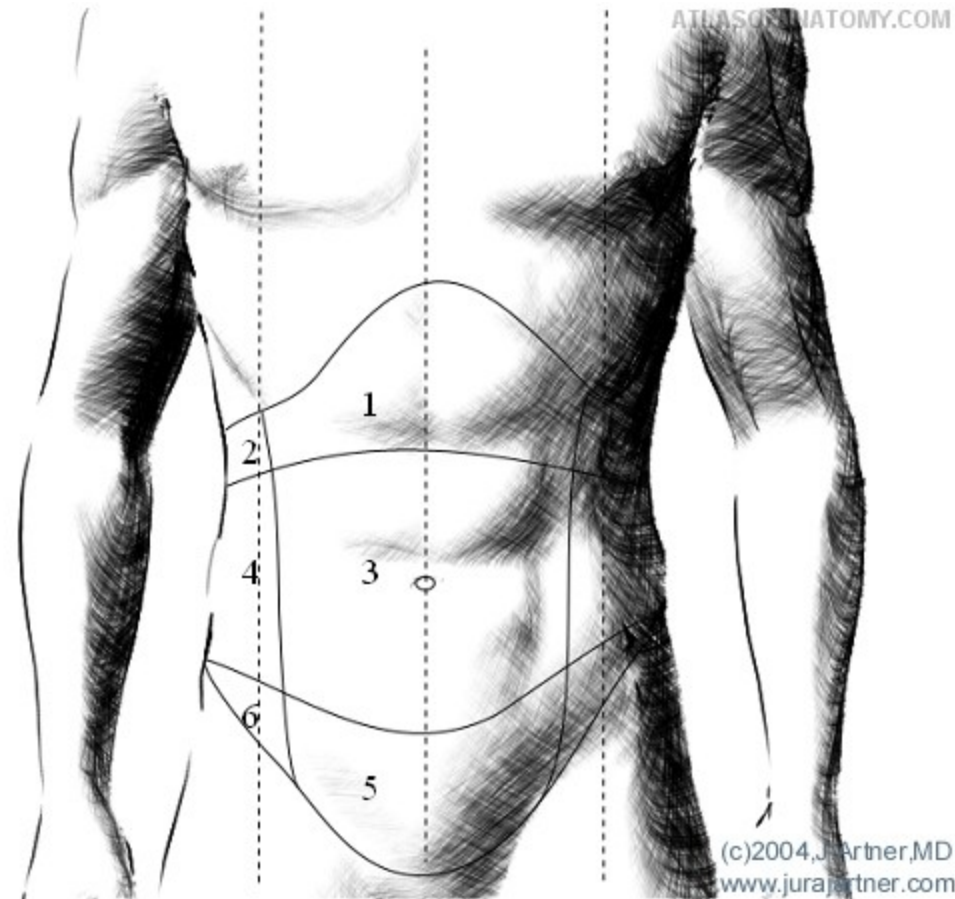
Regiones Pectorales

- 1 - Regio pectoralis,
/ reg.mammaria
- 2 - Regio praesternalis,
- 3 - Trigonum clavipectorale,
- 4 - Regio axillaris.



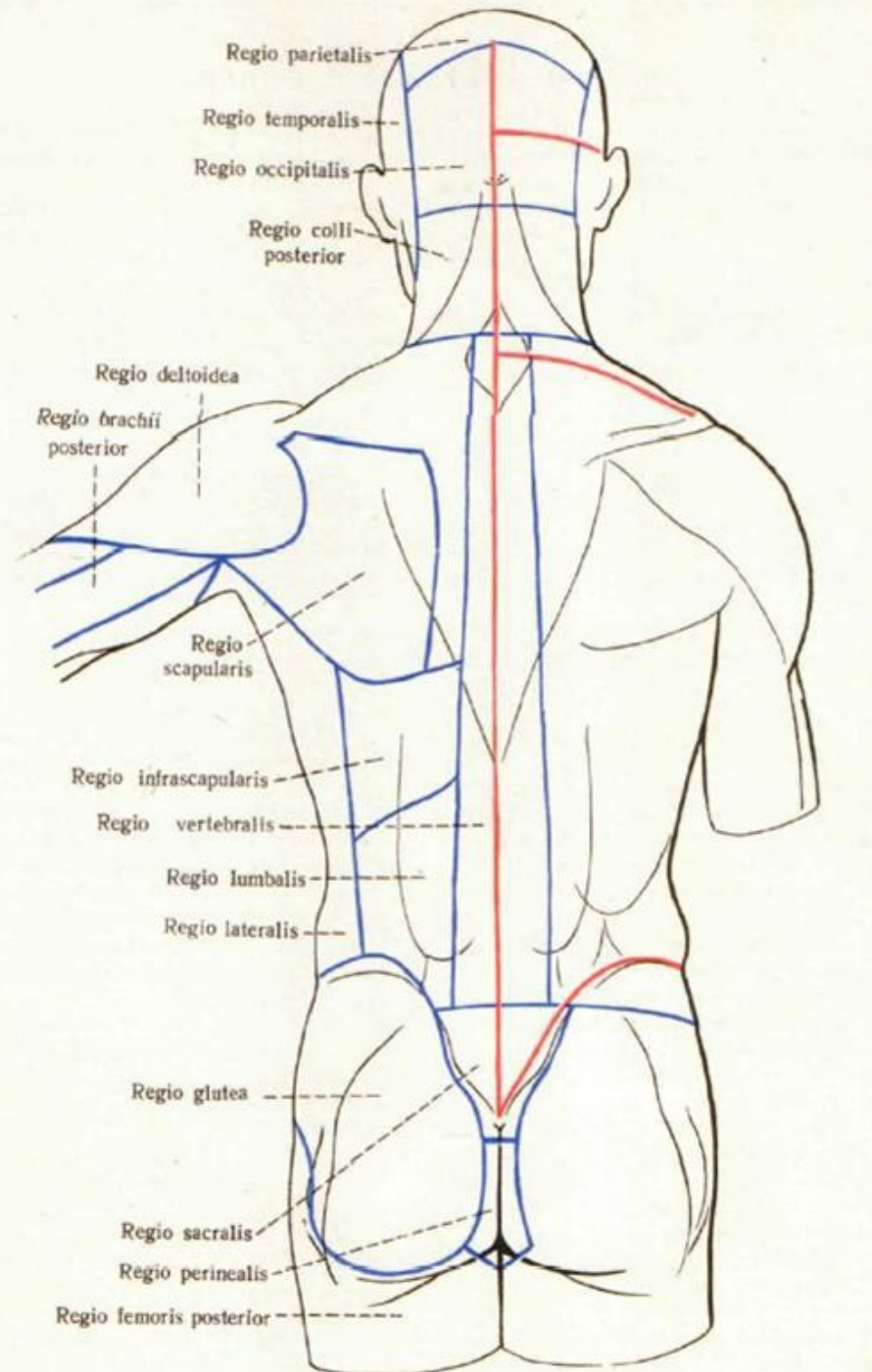
Regiones abdominales

- 1 - Regio epigastrica,
- 2 - Regio hypochondriaca,
- 3 - Regio umbilicalis,
- 4 - Regio lateralis,
- 5 - Regio pubica,
- 6 - Regio inguinalis.



Regiones dorsi:

- Regio vertebralis
- Regio scapularis
- Regio infrascapula
- Regio lumbalis
- Regio lateralis
- Regio sacralis



- **Regiones membri inferioris**

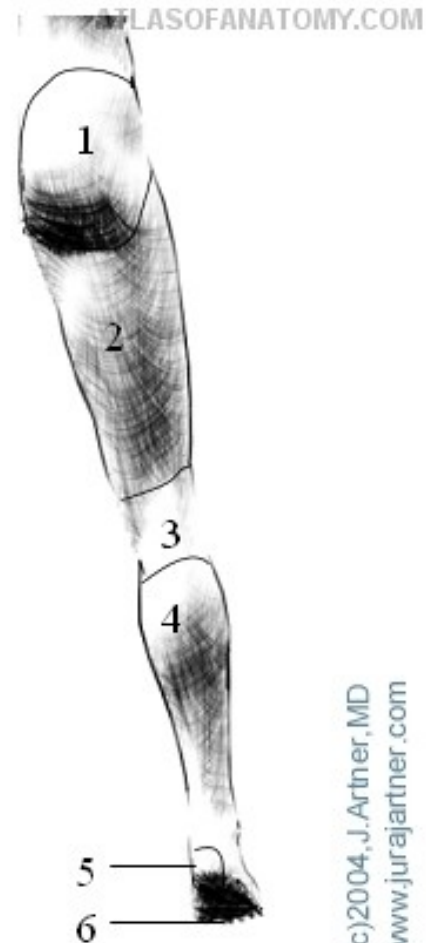
(Aspectus anterior)

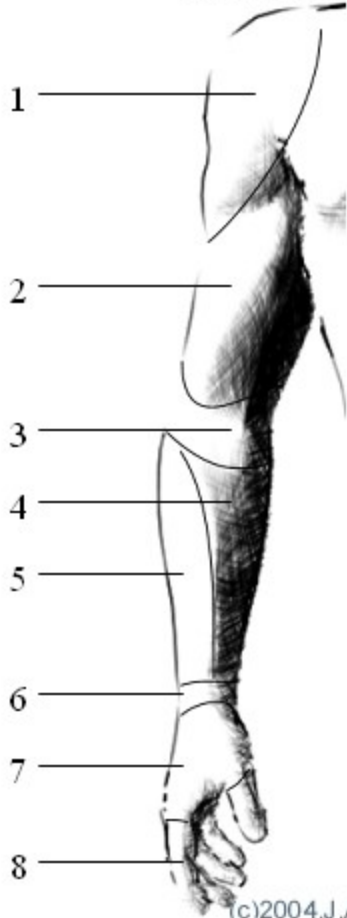
- 1 - Regio femoralis anterior,
- 2 - Trigonum femorale,
- 3 - Regio genus anterior,
- 4 - Regio cruralis anterior,
- 5 - Dorsum pedis,
- 6 - Digiti.



Regiones membri inferioris
(Aspectus posterior)

- 1 - Regio glutealis,
- 2 - Regio femoralis posterior,
- 3 - Regio genus posterior,
- 4 - Regio cruralis posterior= Reg. suralis,
- 5 - Regio calcanea,
- 6 - Planta pedis.





- **Regiones membri superioris**
 - 1 - Regio deltoidea,
 - 2 - Regio brachialis anterior,
 - 3 - Regio cubitalis anterior,
 - 4 - Regio antebrachialis anterior,
 - 5 - Regio antebrachialis posterior,
 - 6 - Regio carpalis anterior et posterior,
 - 7 - Dorsum manus,
 - 8 - Digiti, in this illustration pointing at *Digitus secundus*= Index

Regio perinealis:

- Regio sacralis
- Regio analis
- Regio urogenitalis

