

**Spoločenstvo vtákov vetrolamov JZ Slovenska (počet párov)**

	1996	1997	1999	2000	2001
<i>Luscinia megarhynchos</i>	38	31	36	45	39
<i>Sylvia atricapilla</i>	18	17	33	37	40
<i>Passer montanus</i>	27	25	28	23	29
<i>Fringilla coelebs</i>	15	17	28	28	35
<i>Hippolais icterina</i>	11	13	19	19	24
<i>Parus major</i>	8	9	11	13	12
<i>Lanius collurio</i>	8	8	5	7	14
<i>Oriolus oriolus</i>	5	7	8	9	8
<i>Turdus merula</i>	6	4	10	6	7
<i>Columba palumbus</i>	7	5	6	5	6
<i>Phasianus colchicus</i>	4	7	7	6	4
<i>Carduelis carduelis</i>	5	2	6	6	7
<i>Sylvia communis</i>	5	4	5	5	7
<i>Sturnus vulgaris</i>	5	3	4	3	8
<i>Carduelis chloris</i>	5	5	3	4	4
<i>Streptopelia turtur</i>	4	4	4	5	3
<i>Serinus serinus</i>	3	4	4	1	5
<i>Falco tinnunculus</i>	2	1	3	1	2
<i>Pica pica</i>	3	0	2	1	0
<i>Turdus philomelos</i>	1	1	1	2	1
<i>Asio otus</i>	1	1	1	1	1
<i>Acrocephalus palustris</i>	1	0	1	1	1
<i>Emberiza citrinella</i>	3	1	0	0	0
<i>Parus caeruleus</i>	1	1	1	1	0
<i>Motacilla alba</i>	0	0	1	1	1
<i>Buteo buteo</i>	0	0	0	1	1
<i>Sylvia nisoria</i>	1	1	0	0	0
<i>Dendrocopos syriacus</i>	0	0	0	1	0
<i>Lanius minor</i>	0	0	0	0	1
<i>Muscicapa striata</i>	0	0	1	0	0

**Spoločenstvo vtákov vetrolamov JZ Slovenska (počet párov)**

**Četnosť druhů**

	1996	1997	1999	2000	2001		
<i>Luscinia megarhynchos</i>	38	31	36	45	39	abu 1	1
<i>Sylvia atricapilla</i>	18	17	33	37	40	abu 2	2
<i>Passer montanus</i>	27	25	28	23	29	abu 3	3
<i>Fringilla coelebs</i>	15	17	28	28	35	abu 4	4
<i>Hippolais icterina</i>	11	13	19	19	24	abu 5	5
<i>Parus major</i>	8	9	11	13	12	abu 6	6
<i>Lanius collurio</i>	8	8	5	7	14	abu 7	7
<i>Oriolus oriolus</i>	5	7	8	9	8	abu 8	8
<i>Turdus merula</i>	6	4	10	6	7	abu 9	9
<i>Columba palumbus</i>	7	5	6	5	6	abu 10	10
<i>Phasianus colchicus</i>	4	7	7	6	4	abu 11	11
<i>Carduelis carduelis</i>	5	2	6	6	7	abu 12	12
<i>Sylvia communis</i>	5	4	5	5	7	abu 13	13
<i>Sturnus vulgaris</i>	5	3	4	3	8	abu 14	14
<i>Carduelis chloris</i>	5	5	3	4	4	abu 15	15
<i>Streptopelia turtur</i>	4	4	4	5	3	abu 16	16
<i>Serinus serinus</i>	3	4	4	1	5	abu 17	17
<i>Falco tinnunculus</i>	2	1	3	1	2	abu 18	18
<i>Pica pica</i>	3	0	2	1	0	abu 19	19
<i>Turdus philomelos</i>	1	1	1	2	1	abu 20	20
<i>Asio otus</i>	1	1	1	1	1	abu 21	21
<i>Acrocephalus palustris</i>	1	0	1	1	1	abu 22	22
<i>Emberiza citrinella</i>	3	1	0	0	0	abu 23	23
<i>Parus caeruleus</i>	1	1	1	1	0	abu 24	24
<i>Motacilla alba</i>	0	0	1	1	1	abu 25	25
<i>Buteo buteo</i>	0	0	0	1	1	abu 26	26
<i>Sylvia nisoria</i>	1	1	0	0	0	abu 27	27
<i>Dendrocopos syriacus</i>	0	0	0	1	0	abu 28	28
<i>Lanius minor</i>	0	0	0	0	1	abu 29	29
<i>Muscicapa striata</i>	0	0	1	0	0	abu 30	30
						abu 31	31
						abu 32	32
						abu 33	33
						abu 34	34
						abu 35	35
						abu 36	36
						abu 37	37
						abu 38	38
						abu 39	39
						abu 40	40
						abu 41	41
						abu 42	42
						abu 43	43
						abu 44	44
						abu 45	45

**Rank abundance plot**

	1996
<i>Luscinia me</i>	38
<i>Passer moi</i>	27
<i>Sylvia atric</i>	18
<i>Fringilla coi</i>	15
<i>Hippolais ic</i>	11
<i>Parus majo</i>	8
<i>Lanius collu</i>	8
<i>Columba p.</i>	7
<i>Turdus mei</i>	6
<i>Oriolus oric</i>	5
<i>Carduelis c</i>	5
<i>Sylvia comi</i>	5
<i>Sturnus vul</i>	5
<i>Carduelis c</i>	5
<i>Phasianus</i>	4
<i>Streptopeli</i>	4
<i>Serinus ser</i>	3
<i>Pica pica</i>	3
<i>Emberiza c</i>	3
<i>Falco tinnu.</i>	2
<i>Turdus phil</i>	1
<i>Asio otus</i>	1
<i>Acrocephal</i>	1
<i>Parus caer</i>	1
<i>Sylvia nisor</i>	1

### Graf kategorií abunda

abu 1	nad 20
abu 2	od 10 do 19
abu 3	od 5 do 9
abu 4	od 2 do 4
abu 5	1

### K-dominance plot

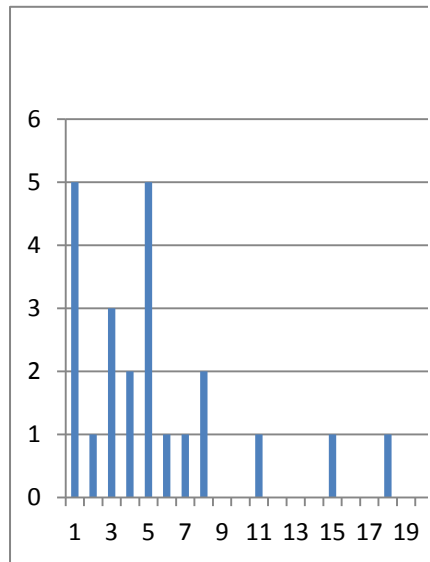
	1996
<i>Luscinia me</i>	38
<i>Passer moi</i>	27
<i>Sylvia atric</i>	18
<i>Fringilla coi</i>	15
<i>Hippolais ic</i>	11
<i>Parus majo</i>	8
<i>Lanius collu</i>	8
<i>Columba p.</i>	7
<i>Turdus mei</i>	6

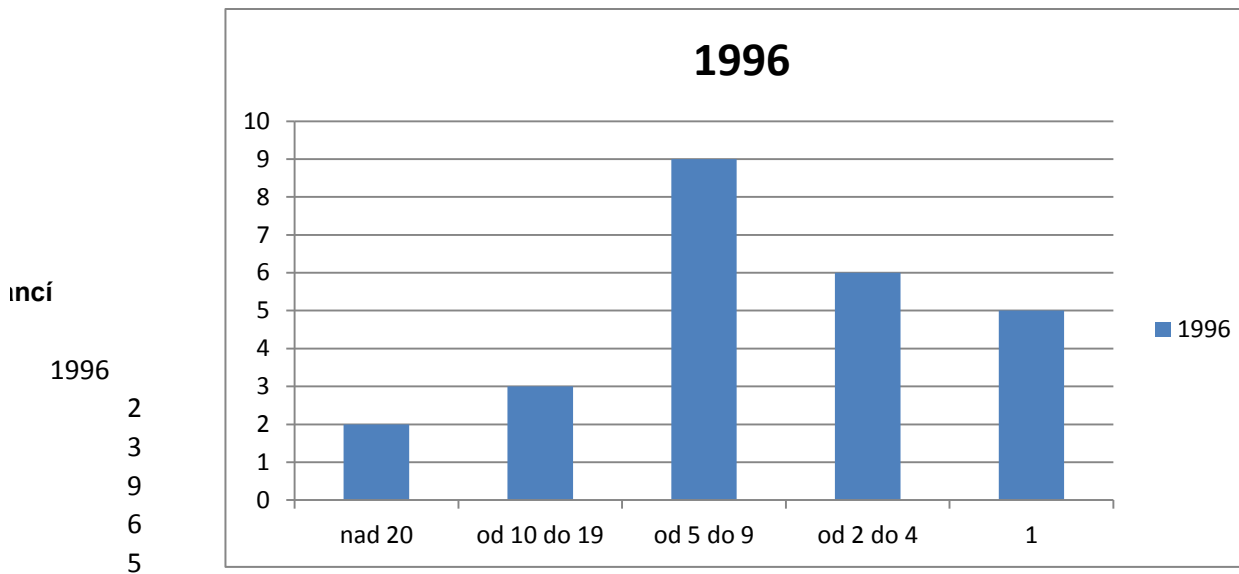
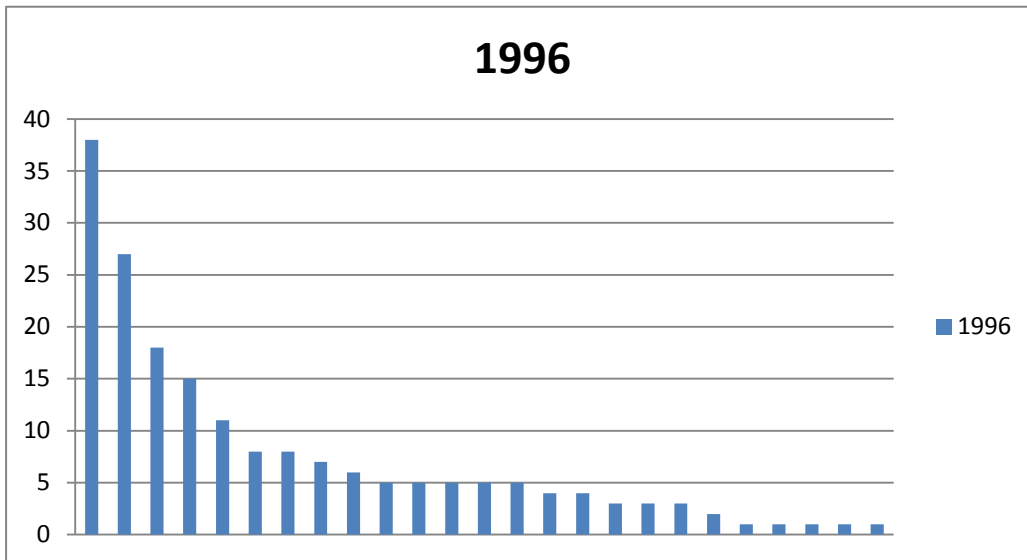
<i>Oriolus oric</i>	5
<i>Carduelis c</i>	5
<i>Sylvia comi</i>	5
<i>Sturnus vul</i>	5
<i>Carduelis c</i>	5
<i>Phasianus</i>	4
<i>Streptopelia</i>	4
<i>Serinus ser</i>	3
<i>Pica pica</i>	3
<i>Emberiza c</i>	3
<i>Falco tinnu.</i>	2
<i>Turdus phil</i>	1
<i>Asio otus</i>	1
<i>Acrocephal</i>	1
<i>Parus caer</i>	1
<i>Sylvia niso</i>	1

### **Kumulativní počet dru**

	1996
<i>Luscinia me</i>	38
<i>Passer mor</i>	27
<i>Sylvia atric.</i>	18
<i>Fringilla coi</i>	15
<i>Hippolais ic</i>	11
<i>Parus majo</i>	8
<i>Lanius collu</i>	8
<i>Columba p.</i>	7
<i>Turdus mei</i>	6
<i>Oriolus oric</i>	5
<i>Carduelis c</i>	5
<i>Sylvia comi</i>	5
<i>Sturnus vul</i>	5
<i>Carduelis c</i>	5
<i>Phasianus</i>	4
<i>Streptopelia</i>	4
<i>Serinus ser</i>	3
<i>Pica pica</i>	3
<i>Emberiza c</i>	3
<i>Falco tinnu.</i>	2
<i>Turdus phil</i>	1
<i>Asio otus</i>	1
<i>Acrocephal</i>	1
<i>Parus caer</i>	1
<i>Sylvia niso</i>	1

1996	1997	1999	2000	2001
5	2	1	9	0
1	6	2	1	6
3	1	6	3	1
2	1	6	3	1
5	2	1	9	0
1	6	2	1	6
1	6	2	1	6
2	1	6	3	1
0	7	1	9	0
0	7	1	9	0
1	6	2	1	6
0	7	1	9	0
0	7	1	9	0
0	7	1	9	0
1	6	2	1	6
0	7	1	9	0
0	7	1	9	0
0	7	1	9	0
0	7	1	9	0
0	7	1	9	0
0	7	1	9	0
0	7	1	9	0
0	7	1	9	0
0	7	1	9	0
0	7	1	9	0
0	7	1	9	0
0	7	1	9	0
1	6	2	1	6
0	7	1	9	0
0	7	1	9	0
0	7	1	9	0
0	7	1	9	0
0	7	1	9	0
0	7	1	9	0
0	7	1	9	0
1	6	2	1	6
0	7	1	9	0
0	7	1	9	0
0	7	1	9	0
0	7	1	9	0
0	7	1	9	0
0	7	1	9	0
0	7	1	9	0
0	7	1	9	0
0	7	1	9	0
0	7	1	9	0



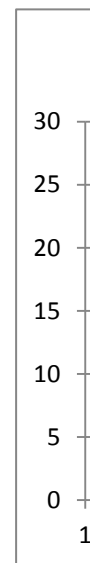


	rok 1996		1997		rok 1997
20.32086	1	20.32086	<i>Luscinia mi</i>	31	18.12865
14.4385	2	34.75936	<i>Passer moi</i>	25	14.61988
9.625668	3	44.38503	<i>Sylvia atric</i>	17	9.94152
8.02139	4	52.40642	<i>Fringilla co</i>	17	9.94152
5.882353	5	58.28877	<i>Hippolais ic</i>	13	7.602339
4.278075	6	62.56684	<i>Parus majc</i>	9	5.263158
4.278075	7	66.84492	<i>Lanius collt</i>	8	4.678363
3.743316	8	70.58824	<i>Oriolus oric</i>	7	4.093567
3.208556	9	73.79679	<i>Phasianus</i>	7	4.093567
					1
					2
					3
					4
					5
					6
					7
					8
					9

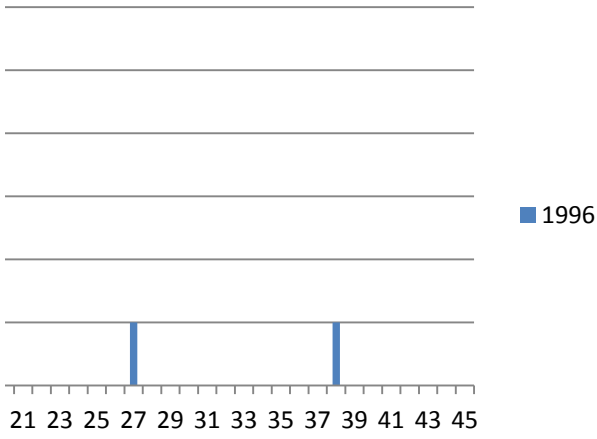
2.673797	10	76.47059	<i>Columba p.</i>	5	2.923977	10	81.28655
2.673797	11	79.14439	<i>Carduelis c</i>	5	2.923977	11	84.21053
2.673797	12	81.81818	<i>Turdus mei</i>	4	2.339181	12	86.54971
2.673797	13	84.49198	<i>Sylvia com</i>	4	2.339181	13	88.88889
2.673797	14	87.16578	<i>Streptopeli</i>	4	2.339181	14	91.22807
2.139037	15	89.30481	<i>Serinus ser</i>	4	2.339181	15	93.56725
2.139037	16	91.44385	<i>Sturnus vul</i>	3	1.754386	16	95.32164
1.604278	17	93.04813	<i>Carduelis c</i>	2	1.169591	17	96.49123
1.604278	18	94.65241	<i>Falco tinnu.</i>	1	0.584795	18	97.07602
1.604278	19	96.25668	<i>Turdus phil</i>	1	0.584795	19	97.66082
1.069519	20	97.3262	<i>Asio otus</i>	1	0.584795	20	98.24561
0.534759	21	97.86096	<i>Emberiza c</i>	1	0.584795	21	98.83041
0.534759	22	98.39572	<i>Parus caer</i>	1	0.584795	22	99.4152
0.534759	23	98.93048	<i>Sylvia niso</i>	1	0.584795	23	100
0.534759	24	99.46524					
0.534759	25	100					

## jhú

	1996	1996 kumul		1996 kumul
1	38	38	38	1
2	27	65	65	2
3	18	83	83	3
4	15	98	98	4
5	11	109	109	5
6	8	117	117	6
7	8	125	125	7
8	7	132	132	8
9	6	138	138	9
10	5	143	143	10
11	5	148	148	11
12	5	153	153	12
13	5	158	158	13
14	5	163	163	14
15	4	167	167	15
16	4	171	171	16
17	3	174	174	17
18	3	177	177	18
19	3	180	180	19
20	2	182	182	20
21	1	183	183	21
22	1	184	184	22
23	1	185	185	23
24	1	186	186	24
25	1	187	187	25



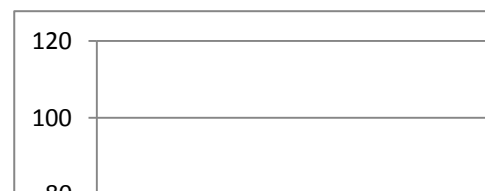
1996





]

	rok 1996	rok 1997
1.0	20.32086	18.12865
2.0	34.75936	32.74854
3.0	44.38503	42.69006
4.0	52.40642	52.63158
5.0	58.28877	60.23392
6.0	62.56684	65.49708
7.0	66.84492	70.17544
8.0	70.58824	74.26901
9.0	73.79679	78.36257



10.0	76.47059	81.28655
11.0	79.14439	84.21053
12.0	81.81818	86.54971
13.0	84.49198	88.88889
14.0	87.16578	91.22807
15.0	89.30481	93.56725
16.0	91.44385	95.32164
17.0	93.04813	96.49123
18.0	94.65241	97.07602
19.0	96.25668	97.66082
20.0	97.3262	98.24561
21.0	97.86096	98.83041
22.0	98.39572	99.4152
23.0	98.93048	100
24.0	99.46524	
25.0	100	

