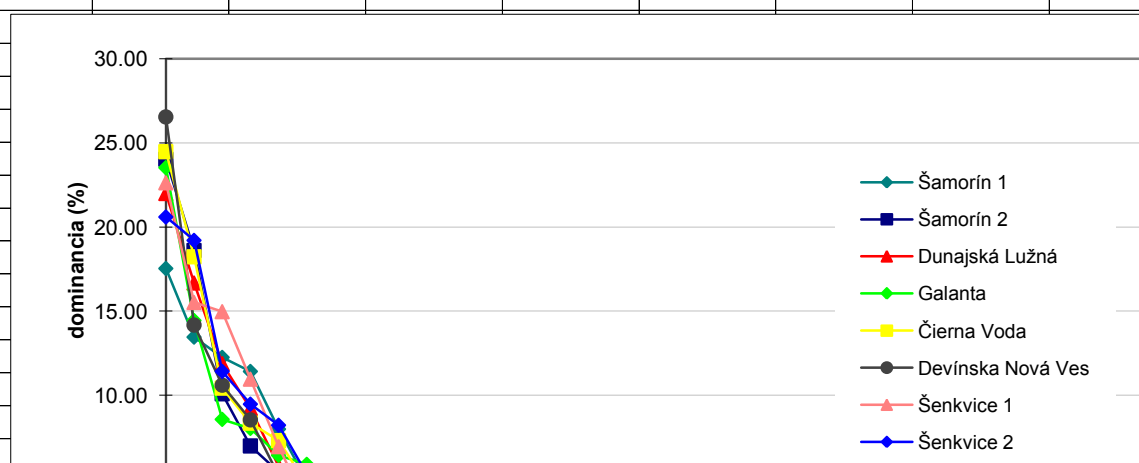


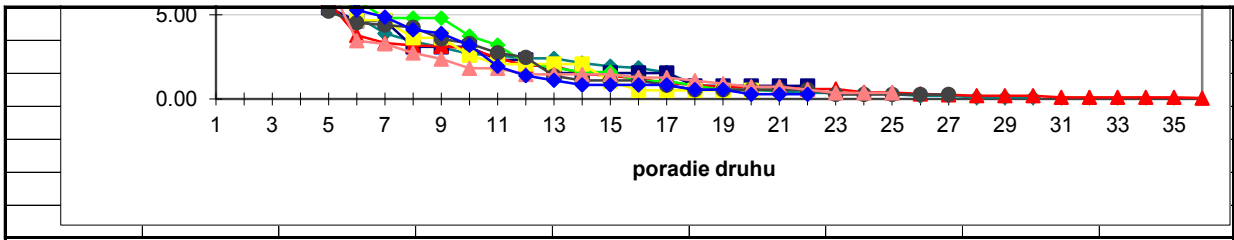
## 8 lokalít

Šamorín 1	Šamorín 2	Dunajská Lužná	Galanta	Čierna Voda	Devínska Nová Ves	Šenkvice 1	Šenkvice 2
17.53	24.03	21.99	23.53	24.48	26.55	22.63	20.60
13.45	18.60	16.67	14.44	18.23	14.17	15.51	19.20
12.24	10.08	11.87	8.56	10.42	10.59	14.96	11.41
11.41	6.98	9.20	8.02	8.33	8.53	10.95	9.46
7.98	5.43	5.78	6.42	7.29	5.23	6.93	8.21
4.92	4.65	3.78	5.88	4.69	4.54	3.47	5.29
3.90	4.65	3.33	4.81	4.69	4.40	3.28	4.87
3.43	3.10	3.18	4.81	3.65	4.26	2.74	4.12
3.06	3.10	3.14	4.81	3.65	3.58	2.37	3.90
2.69	3.10	3.01	3.74	2.60	3.30	1.82	3.20
2.60	2.33	2.44	3.21	2.08	2.75	1.82	1.95
2.41	2.33	1.99	2.14	2.08	2.48	1.46	1.39
2.41	1.55	1.99	1.87	2.08	1.38	1.46	1.11
2.13	1.55	1.49	1.60	2.08	1.10	1.46	0.83
1.95	1.55	1.39	1.60	1.04	1.10	1.46	0.83
1.86	1.55	1.19	1.07	0.52	1.10	1.28	0.83
1.58	1.55	0.95	1.07	0.52	0.83	1.28	0.83
0.83	0.78	0.85	0.80	0.52	0.55	1.09	0.56
0.56	0.78	0.70	0.53	0.52	0.55	0.91	0.56
0.56	0.78	0.70	0.53	0.52	0.55	0.73	0.28
0.46	0.78	0.70	0.53		0.55	0.73	0.28
0.37	0.78	0.60			0.55	0.55	0.28
0.37		0.60			0.28	0.36	
0.37		0.40			0.28	0.36	
0.28		0.37			0.28	0.36	
0.19		0.30			0.28		
0.19		0.25			0.28		
0.09		0.20					
0.09		0.20					
0.09		0.20					
		0.10					
		0.10					
		0.10					
		0.10					
		0.10					
		0.05					

Krivky dominancie pre druhy podľa ich poradia v nidocenózach sledovaných lokalít



8 lokalit

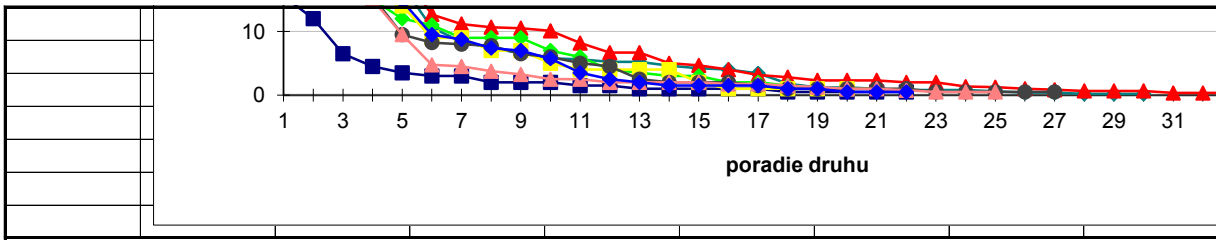


## 8 lokalít

	Šamorín 1	Šamorín 2	Dunajská Lužná	Galanta	Čierna Voda	Devínska Nová Ves	Šenkvice 1	Šenkvice 2
	37.8	15.5	73.66667	44	47	48.25	31	37
	29	12	55.83333	27	35	25.75	21.25	34.5
	26.4	6.5	39.76667	16	20	19.25	20.5	20.5
	24.6	4.5	30.83333	15	16	15.5	15	17
	17.2	3.5	19.35	12	14	9.5	9.5	14.75
	10.6	3	12.66667	11	9	8.25	4.75	9.5
	8.4	3	11.16667	9	9	8	4.5	8.75
	7.4	2	10.66667	9	7	7.75	3.75	7.4
	6.6	2	10.51667	9	7	6.5	3.25	7
	5.8	2	10.08333	7	5	6	2.5	5.75
	5.6	1.5	8.166667	6	4	5	2.5	3.5
	5.2	1.5	6.666667	4	4	4.5	2	2.5
	5.2	1	6.666667	3.5	4	2.5	2	2
	4.6	1	5	3	4	2	2	1.5
	4.2	1	4.666667	3	2	2	2	1.5
	4	1	4	2	1	2	1.75	1.5
	3.4	1	3.166667	2	1	1.5	1.75	1.5
	1.8	0.5	2.833333	1.5	1	1	1.5	1
	1.2	0.5	2.333333	1	1	1	1.25	1
	1.2	0.5	2.333333	1	1	1	1	0.5
	1	0.5	2.333333	1		1	1	0.5
	0.8	0.5	2			1	0.75	0.5
	0.8		2			0.5	0.5	
	0.8		1.333333			0.5	0.5	
	0.6		1.25			0.5	0.5	
	0.4		1			0.5		
	0.4		0.833333			0.5		
	0.2		0.666667					
	0.2		0.666667					
	0.2		0.666667					
			0.333333					
			0.333333					
			0.333333					
			0.333333					
			0.333333					
			0.333333					
			0.166667					

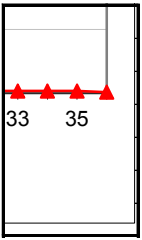


8 lokalit





8 lokalit



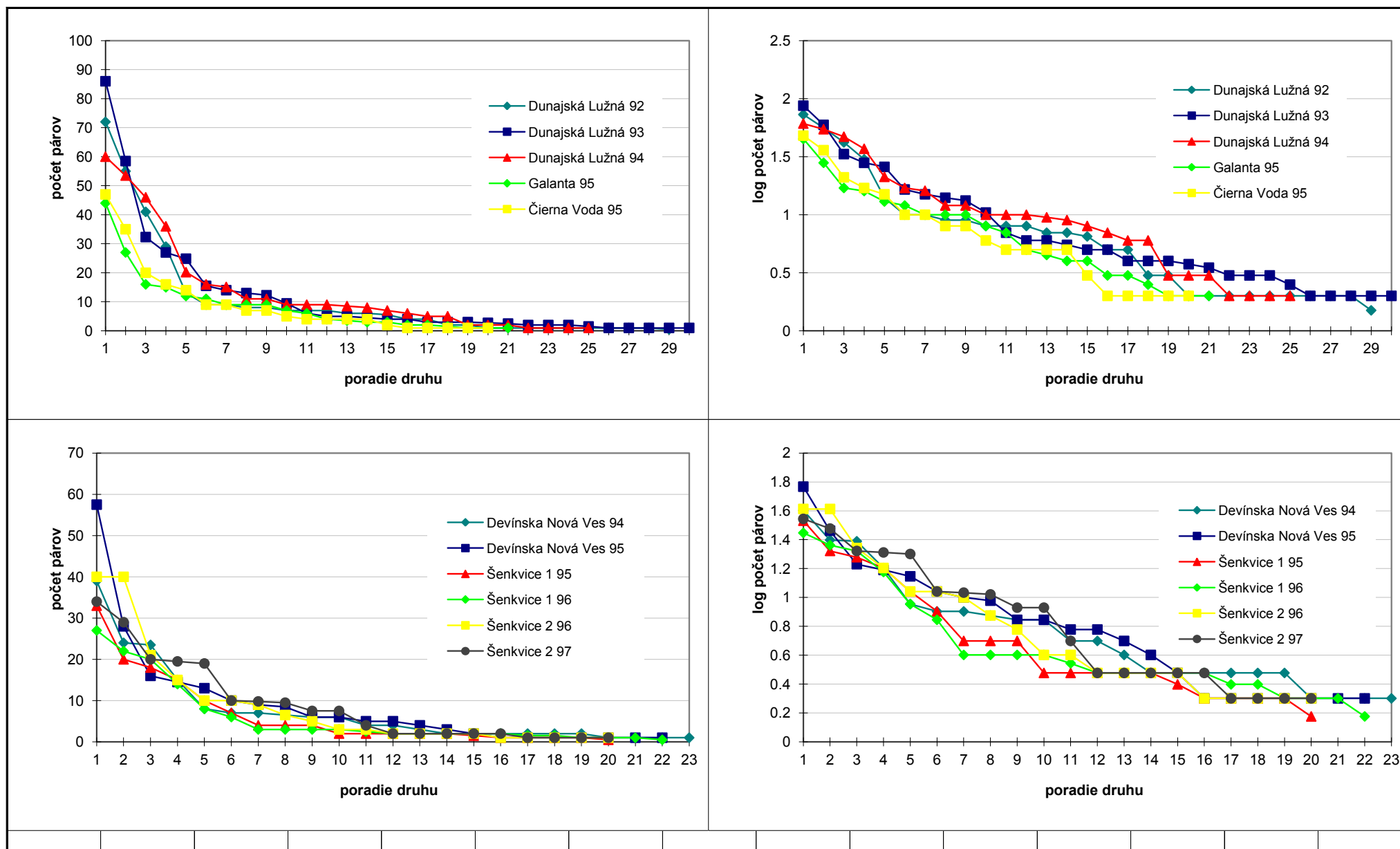
## 18 lokalít

	Dunajská Lužná 92	Dunajská Lužná 93	Dunajská Lužná 94	Galanta 95	Čierna Voda 95	Devínska Nová Ves 94	Devínska Nová Ves 95	Šenkvice 1 95	Šenkvice 1 96	Šenkvice 2 96	Šenkvice 2 97	
Šamorín 1 a 2 netreba, sú v samostatných obr.	72	86	60	44	47	39	57.5	33	27	40	34	
	55	58.5	53.5	27	35	24	28	20	22	40	29	
DL_92 - len na tej ploche ako bola	41	32.3	46	16	20	23.5	16	18	20	21	20	
no testované to bolo na celej, kašľať už na to	29	27	36	15	16	15	14.5	15	14	15	19.5	
	13	24.85	20.2	12	14	8	13	10	8	10	19	
	9	15.5	16	11	9	7	10	7	6	10	10	
	9	14	15.1	9	9	7	9	4	3	9	9.8	
	8	13	11	9	7	6.5	8.5	4	3	6.5	9.5	
	8	12.25	11	9	7	6	6	4	3	5	7.5	
	7	9.45	9	7	5	6	6	2	3	3	7.5	
	7	6	9	6	4	4	5	2	2.5	3	4	
	7	5	9	4	4	4	5	2	2	2	2	
	6	5	8.5	3.5	4	3	4	2	2	2	2	
	6	4.5	8	3	4	2	3	2	2	2	2	
	5.5	4	7	3	2	2	2	1.5	2	2	2	
	4	4	6	2	1	2	1	1	2	1	2	
	4	3	5	2	1	2	1	1	1.5	1	1	
	2	3	5	1.5	1	2	1	1	1.5	1	1	
	2	3	2	1	1	2	1	1	1	1	1	
	1	2.75	2	1	1	1	1	0.5	1	1	1	
	1	2.5	2	1		1	1		1			
	1	2	1			1	1		0.5			
	1	2	1			1						
	1	2	1									
	1	1.5	1									
	1	1										
	1	1										
	1	1										
	0.5	1										
		1										

## 18 lokalít

Dunajská Lužná 92	Dunajská Lužná 93	Dunajská Lužná 94	Galanta 95	Čierna Voda 95	Devínska Nová Ves 94	Devínska Nová Ves 95	Šenkvice 1 95	Šenkvice 1 96	Šenkvice 2 96	Šenkvice 2 97				
1.863323	1.939519	1.78533	1.653213	1.681241	1.60206	1.767156	1.531479	1.447158	1.612784	1.544068				
1.748188	1.774517	1.736397	1.447158	1.556303	1.39794	1.462398	1.322219	1.361728	1.612784	1.477121				
1.623249	1.522444	1.672098	1.230449	1.322219	1.389166	1.230449	1.278754	1.322219	1.342423	1.322219				
1.477121	1.447158	1.568202	1.20412	1.230449	1.20412	1.190332	1.20412	1.176091	1.20412	1.311754				
1.146128	1.412461	1.326336	1.113943	1.176091	0.954243	1.146128	1.041393	0.954243	1.041393	1.30103				
1	1.217484	1.230449	1.079181	1	0.90309	1.041393	0.90309	0.845098	1.041393	1.041393				
1	1.176091	1.206826	1	1	0.90309	1	0.69897	0.60206	1	1.033424				
0.954243	1.146128	1.079181	1	0.90309	0.875061	0.977724	0.69897	0.60206	0.875061	1.021189				
0.954243	1.122216	1.079181	1	0.90309	0.845098	0.845098	0.69897	0.60206	0.778151	0.929419				
0.90309	1.019116	1	0.90309	0.778151	0.845098	0.845098	0.477121	0.60206	0.60206	0.929419				
0.90309	0.845098	1	0.845098	0.69897	0.69897	0.778151	0.477121	0.544068	0.60206	0.69897				
0.90309	0.778151	1	0.69897	0.69897	0.69897	0.778151	0.477121	0.477121	0.477121	0.477121				
0.845098	0.778151	0.977724	0.653213	0.69897	0.60206	0.69897	0.477121	0.477121	0.477121	0.477121				
0.845098	0.740363	0.954243	0.60206	0.69897	0.477121	0.60206	0.477121	0.477121	0.477121	0.477121				
0.812913	0.69897	0.90309	0.60206	0.477121	0.477121	0.477121	0.39794	0.477121	0.477121	0.477121				
0.69897	0.69897	0.845098	0.477121	0.30103	0.477121	0.30103	0.30103	0.477121	0.30103	0.477121				
0.69897	0.60206	0.778151	0.477121	0.30103	0.477121	0.30103	0.30103	0.39794	0.30103	0.30103				
0.477121	0.60206	0.778151	0.39794	0.30103	0.477121	0.30103	0.30103	0.39794	0.30103	0.30103				
0.477121	0.60206	0.477121	0.30103	0.30103	0.477121	0.30103	0.30103	0.30103	0.30103	0.30103				
0.30103	0.574031	0.477121	0.30103	0.30103	0.30103	0.30103	0.176091	0.30103	0.30103	0.30103				
0.30103	0.544068	0.477121	0.30103		0.30103	0.30103		0.30103						
0.30103	0.477121	0.30103			0.30103	0.30103		0.176091						
0.30103	0.477121	0.30103			0.30103									
0.30103	0.39794	0.30103												
0.30103	0.30103													
0.30103	0.30103													
0.30103	0.30103													
0.30103	0.30103													
0.176091	0.30103													
	0.30103													











2001
40
39
35
29
24
14
12
8
8
7
7
7
6
5
4
4
3
2
1
1
1
1
1
1
1





testy

testy robené s priemernými hodnotami za sledované obdobie, treba spraviť za každý rok zvlášť, bude to lepšie																	
Galanta a Čierna Voda netreba prerábať, sú z 1 roka iba																	
<b>Geometric series</b>																	
										Šamorín1	Šamorín1	Šamorín1	Šamorín1	Šamorín1		Šamorín2	Šamorín2
	Šamorín 1	Šamorín 2	Dunajská Lužná	Galanta	Čierna Voda	Devínska Nová Ves	Šenkvice1	Šenkvice2		1996	1997	1999	2000	2001		1999	2000
S	30	22	36	21	20	27	25	22		25	23	25	26	24		20	18
N	215.6	64.5	334.9667	187	192	181.75	137	179.65		187	171	228	232	260		73	56
df	29	21	35	20	19	26	24	21		24	22	24	25	23		19	17
chi-square	7.962695	11.57176	28.69311	10.3509	13.22766	26.92453	19.81588	5.215837		16.42963	6.761317	12.59796	24.77667	10.23103		14.47407	18.8939
<b>Log series</b>																	
										Šamorín1	Šamorín1	Šamorín1	Šamorín1	Šamorín1		Šamorín2	Šamorín2
	Šamorín 1	Šamorín 2	Dunajská Lužná	Galanta	Čierna Voda	Devínska Nová Ves	Šenkvice 1	Šenkvice 2		1996	1997	1999	2000	2001		1999	2000
S	30	22	36	21	20	27	25	22		25	23	25	26	24		20	18
N	215.6	64.5	334.9667	187	192	181.75	137	179.65		187	171	228	232	260		73	56
chi-square	6.349763	1.793855	2.951134	8.557902	2.968205	4.603993	5.496079	3.396786		10.08603	4.826874	4.031036	4.691143	6.342466		3.980498	1.339347
df	5	3	6	5	5	5	4	5		5	4	5	5	5		3	2



testy

	Šamorín1 1996	Šamorín1 1997	Šamorín1 1999	Šamorín1 2000	Šamorín1 2001	Šamorín2 1999	Šamorín2 2000	Dunajská Lužná 1992	Dunajská Lužná 1993	Dunajská Lužná 1994	Galanta 1995	Čierna Voda 1995	Devínska Nová Ves 1994	Devínska Nová Ves 1995	Šenkvice 1 1995	Šenkvice 1 1996	Šenkvice 2 1996	Šenkvice 2 1997
S - počet druhov	25	23	25	26	24	20	18	29	30	25	21	20	23	22	20	22	20	20
N - počet párov	187	171	228	232	260	73	56	304.5	348.1	345.3	187	192	169	194.5	131.5	128.5	175.5	183.8
<b>Geometric series</b>																		
chi-square	16.430	6.761	12.598	24.777	10.231	14.474	18.894	81.210	74.787	16.975	10.351	13.228	21.105	33.807	18.946	24.641	21.877	5.742
df	24	22	24	25	23	19	17	28	29	24	20	19	22	21	19	21	19	19
	P > 0.80	P > 0.99	P > 0.95	P > 0.30	P > 0.98	P > 0.70	P > 0.30	***	***	P > 0.80	P > 0.95	P > 0.80	P > 0.50	*	P > 0.30	P > 0.20	P > 0.20	P > 0.99
<b>Log series</b>																		
chi-square	10.086	4.827	4.031	4.691	6.342	3.980	1.339	6.346	3.187	13.267	8.558	2.968	3.209	3.659	2.517	3.648	3.180	4.117
df	5	4	5	5	5	3	2	6	6	5	5	5	5	5	5	4	5	5
	P > 0.05	P > 0.30	P > 0.50	P > 0.30	P > 0.20	P > 0.20	P > 0.50	P > 0.30	P > 0.70	*	P > 0.10	P > 0.70	P > 0.50	P > 0.50	P > 0.70	P > 0.30	P > 0.50	P > 0.50
<b>Log normal</b>																		
chi-square	3.582	3.438	2.390	4.824	4.921	1.966	2.290	5.764	2.233	10.335	5.202	2.304	3.597	2.993	3.817	6.217	4.579	6.289
df	3	2	3	3	3	1	0	4	4	3	3	3	3	3	3	2	3	3
	P > 0.30	P > 0.10	P > 0.30	P > 0.10	P > 0.10	P > 0.10	???	P > 0.20	P > 0.50	*	P > 0.10	P > 0.50	P > 0.30	P > 0.30	P > 0.20	*	P > 0.20	P > 0.05
<b>Broken stick</b>																		
chi-square	6.557	4.655	7.666	13.066	10.910	4.225	3.573	44.130	24.189	13.454	5.585	7.737	11.565	6.204	22.734	14.021	16.615	12.453
df	5	4	5	5	5	3	2	6	6	5	5	5	5	5	5	4	5	5
	P > 0.20	P > 0.30	P > 0.10	*	P > 0.05	P > 0.20	P > 0.10	***	***	*	P > 0.30	P > 0.10	*	P > 0.20	***	**	**	*

geometric series

Dunajská Lužná 92		Observed	Expected				
	1	72	37.96633	30.50837			
	2	55	33.34203	14.06836		S	29
	3	41	29.28097	4.690269		N	304.5
	4	29	25.71455	0.41977			
	5	13	22.58252	4.066182			1/N
	6	9	19.83197	5.916282		k	0.1218
	7	9	17.41643	4.067213			
	8	8	15.29511	3.479455		Ck	1.02368
	9	8	13.43217	2.196849			
	10	7	11.79613	1.950034			
	11	7	10.35936	1.089382			
	12	7	9.09759	0.483632			sum exp
	13	6	7.989504	0.495416			
	14	6	7.016382	0.147232			
	15	5.5	6.161787	0.071077			
	16	4	5.411281	0.368067		chi-square	81.20997
	17	4	4.752187	0.119058		df (S-1)	28
	18	2	4.173371	1.131829			
	19	2	3.665054	0.756443			
	20	1	3.218651	1.52934			
	21	1	2.826619	1.180399			
	22	1	2.482337	0.885183			
	23	1	2.179988	0.638706			
	24	1	1.914466	0.436805			
	25	1	1.681284	0.276067			
	26	1	1.476503	0.153779			
	27	1	1.296665	0.067874			
	28	1	1.138731	0.016902			
	29	1	1.000034	1.15E-09			

geometric series

		Dunajská Lužná		Observed	Expected		
		1993	1	86	43.29073	42.13563	
			2	58.5	38.01618	11.03705	
			3	32.3	33.38429	0.035217	
			4	27	29.31675	0.183081	
0.003284			5	24.85	25.7448	0.0311	
0.003284			6	15.5	22.60805	2.234796	
			7	14	19.85349	1.725808	
			8	13	17.43454	1.127941	
			9	12.25	15.31031	0.611713	
			10	9.45	13.4449	1.187012	
			11	6	11.80678	2.855874	
304.5			12	5	10.36824	2.779449	
			13	5	9.104973	1.850726	
			14	4.5	7.995624	1.528259	
			15	4	7.021437	1.300173	
			16	4	6.165945	0.760843	
			17	3	5.414686	1.076832	
			18	3	4.754961	0.647721	
			19	3	4.175616	0.330987	
			20	2.75	3.666859	0.229251	
			21	2.5	3.220089	0.161029	
			22	2	2.827753	0.242304	
			23	2	2.48322	0.094032	
			24	2	2.180664	0.014968	
			25	1.5	1.914972	0.089924	
			26	1	1.681652	0.276305	
			27	1	1.47676	0.153918	
			28	1	1.296831	0.067942	
			29	1	1.138825	0.016923	
			30	1	1.000071	5.02E-09	



geometric series

						Galanta	
0.753248							Abundance
1.429155	S	25					Observed
1.463895	N	345.3					44
0.352915							27
1.994273		1/N	0.002896				16
2.339414	k	0.1529	0.002896				15
1.124429							12
1.99685	Ck	1.016043					11
0.730377							9
0.77127							9
0.142546							9
0.014524		sum exp	345.3				7
0.188922							6
0.519971							4
0.579182							3.5
0.538411	chi-square	16.97499					3
0.400446	df (S-1)	24					3
1.020422							2
0.184232							2
0.037277							1.5
0.001743							1
0.252851							1
0.111074							1
0.027559							
1.41E-08							
						S	21
						N	187
						k	
					0.005348	0.15656	0.005347
						Ck	
						1.028805	











geometric series

				Senkvice 1		Observed	Expected
				1996	1	27	17.13264
S	20				2	22	14.96485
N	131.5				3	20	13.07134
					4	14	11.41743
	1/N	0.007605			5	8	9.97278
k	0.14598	0.007605			6	6	8.710924
					7	3	7.608731
Ck	1.04449				8	3	6.645998
					9	3	5.80508
					10	3	5.070563
					11	2.5	4.428985
	sum exp	131.5			12	2	3.868586
					13	2	3.379093
					14	2	2.951537
					15	2	2.578079
chi-square	18.94598				16	2	2.251874
df (S-1)	19				17	1.5	1.966945
					18	1.5	1.718067
					19	1	1.50068
					20	1	1.310799
					21	1	1.144944
					22	1	1.000074



geometric series

Expected							Senkvice 2	
29.46104	3.770054						1997	1
24.65594	9.54902		S	20				2
20.63456	0.006472		N	175.5				3
17.26906	0.298143							4
14.45248	1.371707			1/N	0.005698			5
12.09528	0.362968		k	0.1631	0.005699			6
10.12254	0.124484							7
8.471553	0.458832		Ck	1.029241				8
7.089843	0.616014							9
5.933489	1.450303							10
4.965737	0.778157							11
4.155825	1.11833			sum exp	175.5			12
3.47801	0.628093							13
2.910747	0.284965							14
2.436004	0.078037							15
2.038692	0.529202		chi-square	21.87712				16
1.706181	0.292285		df (S-1)	19				17
1.427903	0.128231							18
1.195012	0.031824							19
1.000106	1.11E-08							20

geometric series

Observed	Expected								
34	31.30278	0.232407							
29	26.11372	0.319013	S	20					
20	21.78485	0.146234	N	183.8					
19.5	18.17357	0.096811							
19	15.16094	0.972128		1/N	0.005441				
10	12.64771	0.55428	k	0.16577	0.005441				
9.8	10.5511	0.053469							
9.5	8.802044	0.055344	Ck	1.027381					
7.5	7.342929	0.00336							
7.5	6.125692	0.308328							
4	5.110236	0.241207							
2	4.263112	1.201394		sum exp	183.8				
2	3.556416	0.681144							
2	2.966869	0.315092							
2	2.475051	0.091179							
2	2.064762	0.002031	chi-square	5.742283					
1	1.722486	0.303042	df (S-1)	19					
1	1.43695	0.132868							
1	1.198747	0.032951							
1	1.00003	9.23E-10							
									0.005348

geometric series

Šamorín1 1996	Abundance						Šamorín1 1997	Abundance
	Observed	Expected						
	38	24.09564	8.023493					31
	27	21.10368	1.647415					25
	18	18.48324	0.012634					17
	15	16.18818	0.08721					17
	11	14.17809	0.712385					13
	8	12.4176	1.571573					9
	8	10.8757	0.760381					8
	7	9.525268	0.66948					7
	6	8.342515	0.657761					7
	5	7.306625	0.728177					5
	5	6.399362	0.306001					5
	5	5.604753	0.065253					4
	5	4.908811	0.001694					4
	5	4.299284	0.114206					4
	4	3.765442	0.014611					4
	4	3.297887	0.149478					3
	3	2.888388	0.004313					2
	3	2.529737	0.087419					1
	3	2.21562	0.277689					1
	2	1.940506	0.001824					1
	1	1.699553	0.287943					1
	1	1.48852	0.160328					1
	1	1.30369	0.070744					1
	1	1.141811	0.017613					
	1	1.000032	1.05E-09					
S	25					S		23
N	187	186.9999	16.42963	chi-square		N		171
k						k		
0.12417	0.005348					0.005848	0.1342	0.005848
Ck						Ck		
1.03772						1.03773		



geometric series

		Šamorín1 2000	Abundance				
			Observed	Expected			
			45	30.52183	6.867784		
			37	26.62114	4.046434		
			28	23.21896	0.984469		
			23	20.25158	0.373		
			19	17.66343	0.101137		
			13	15.40604	0.375763		
			9	13.43715	1.465213		
			7	11.71988	1.90081		
			6	10.22208	1.743868		
			6	8.915698	0.95352		
			6	7.776272	0.40574		
			5	6.782464	0.46844		
			5	5.915665	0.141733		
			5	5.159643	0.004939		
			4	4.500241	0.055606		
			3	3.92511	0.218039		
			2	3.423481	0.591882		
			1	2.98596	1.320861		
			1	2.604354	0.988327		
			1	2.271518	0.711752		
			1	1.981218	0.485958		
			1	1.728018	0.306716		
			1	1.507178	0.170669		
			1	1.31456	0.075271		
			1	1.146559	0.018734		
			1	1.000029	8.49E-10		
			S	26			
chi-square			N	232	232.0001	24.77667	chi-square
			k				
		0.00431	0.1278	0.00431			
			Ck				
			1.029418				



geometric series

	Šamorín1 2001	Abundance						Šamorín2 1999
		Observed	Expected					
		40	39.18176	0.017088				
		39	33.40558	0.936895				
		35	28.48093	1.492165				
		29	24.28227	0.916593				
		24	20.70258	0.525199				
		14	17.65061	0.75504				
		12	15.04855	0.617579				
		8	12.8301	1.818367				
		8	10.93868	0.789479				
		7	9.326102	0.580173				
		7	7.951248	0.113803				
		7	6.779075	0.0072				
		6	5.779704	0.008397				
		5	4.92766	0.001062				
		4	4.201224	0.009638				
		4	3.58188	0.048808				
		3	3.053839	0.000949				
		2	2.603642	0.139952				
		1	2.219813	0.670302				
		1	1.892568	0.420951				
		1	1.613566	0.233311				
		1	1.375694	0.1026				S
		1	1.172889	0.025485				N
		1	0.999982	3.28E-10				k
							0.013699	0.10804
								Ck
								1.113094
	S	24						
	N	260	259.9999	10.23103	chi-square			
	k							
0.003846	0.14742	0.003846						
	Ck							
	1.022243							

## geometric series

Abundance			Šamorín2 2000	Abundance	
Observed	Expected			Observed	Expected
17	8.778883	7.698788		14	6.912003
12	7.830413	2.220248		12	6.169031
8	6.984415	0.147673		5	5.505922
4	6.229819	0.798112		5	4.914091
4	5.556749	0.436131		3	4.385875
4	4.956398	0.184549		3	3.914437
3	4.420909	0.456689		3	3.493674
3	3.943274	0.225641		1	3.118139
3	3.517242	0.076065		1	2.782971
3	3.13724	0.006004		1	2.483829
2	2.798292	0.227735		1	2.216842
2	2.495965	0.098551		1	1.978554
1	2.226301	0.675476		1	1.765879
1	1.985771	0.489354		1	1.576065
1	1.771228	0.335808		1	1.406654
1	1.579865	0.21283		1	1.255452
1	1.409176	0.118811		1	1.120504
1	1.256929	0.052519		1	1.000061
1	1.12113	0.013087			
1	1.000003	1.15E-11			
20				S	18
73	73	14.47407	chi-square	N	56
				k	55.99998
0.013699				0.017857	0.017858
				Ck	
				1.14828	

geometric series

7.268474	
5.511432	
0.046488	
0.001502	
0.437917	
0.213618	
0.069759	
1.438843	
1.142299	
0.886433	
0.667934	
0.483974	
0.332169	
0.210556	
0.117561	
0.051978	
0.01296	
3.7E-09	
18.8939	chi-square

## log series

	Dunajská Lužná				observed	expected	
	1992	72		1	2.5	12	11.42689 0.028744
		55		2	4.5	2	4.212153 1.161786
		41		3	8.5	8	4.258582 3.287059
		29		4	16.5	3	3.844412 0.185472
		13		5	32.5	1	2.942076 1.281972
		9		6	64.5	2	1.683121 0.059658
		9		7	128.5	1	0.562157 0.341019
		8					chi-square 6.345711
		8					df 6
		7					
		7					
		7					
		6					
		6					
		5.5					
		4		S		29	
		4		N		304.5	
		2					
		2		S/N			0.095238
		1		x		0.97477	0.095242
		1					
		1		a		7.881382	
		1					
		1					
		1					
		1					
		1					
		1					

log series

	Dunajská Lužná				observed	expected	
	1993	86		1	2.5	10	11.45965 0.18592
		58.5		2	4.5	7	4.252602 1.77496
		32.3		3	8.5	3	4.338837 0.413126
		27		4	16.5	5	3.988485 0.256529
		24.85		5	32.5	3	3.163202 0.00842
		15.5		6	64.5	1	1.939089 0.454795
		14		7	128.5	1	0.737576 0.093369
		13					chi-square 3.187119
		12.25					df 6
		9.45					
		6					
		5					
		5					
		4.5					
		4					
		4		S		30	
		3		N		348.1	
		3					
		3		S/N			0.086182
		2.75		x		0.97789	0.086183
		2.5					
		2		a		7.870508	
		2					
		2					
		1.5					
		1					
		1					
		1					
		1					
		1					

## log series

Dunajská Lužná					observed	expected	
1994	60		1	2.5	7	9.067559	0.471439
	53.5		2	4.5	0	3.39743	3.39743
	46		3	8.5	6	3.512068	1.76244
	36		4	16.5	7	3.313861	4.100238
	20.2		5	32.5	1	2.767158	1.128539
	16		6	64.5	4	1.875304	2.407254
	15.1		7	128.5			
	11					chi-square	13.26734
	11					df	5
	9						
	9						
	9						
	8.5						
	8						
	7						
	6		S		25		
	5		N		345.3		
	5						
	2		S/N			0.072401	
	2		x		0.98239	0.072407	
	2						
	1		a		6.189734		
	1						
	1						
	1						

log series

	Galanta			observed	expected		
	44		1	2.5	6	8.726498	0.851864
	27		2	4.5	4	3.173967	0.214977
	16		3	8.5	2	3.151092	0.420493
	15		4	16.5	7	2.743713	6.602721
	12		5	32.5	1	1.95603	0.46727
	11		6	64.5	1	0.976284	0.000576
	9						
	9					chi-square	8.557902
	9					df	5
	7						
	6						
	4						
	3.5						
	3						
	3						
	2		S		21		
	2		N		187		
	1.5					x	
	1		S/N		0.112299	0.96856	0.112303
	1						
	1		a		6.070125		

log series

Čierna Voda				observed	expected			Devínska Nová Ves 1994
47		1	2.5	6	8.107421	0.547797		
35		2	4.5	4	2.96809	0.358762		
20		3	8.5	3	2.972917	0.000247		
16		4	16.5	4	2.63447	0.707798		
14		5	32.5	1	1.943987	0.458394		
9		6	64.5	2	1.03666	0.895207		
9								
7					chi-square	2.968205		
7					df	5		
5								
4								
4								
4								
4								
2								
1		S		20				
1		N		192				
1					x			
1		S/N		0.104167	0.97158	0.104154		
1								
		a		5.616254				





log series

				observed	expected			Šenkvice 1 1995
57.5		1	2.5	8	9.162173	0.147415		
28		2	4.5	2	3.330267	0.531372		
16		3	8.5	5	3.303355	0.871419		
14.5		4	16.5	5	2.871271	1.578216		
13		5	32.5	1	2.039979	0.53018		
10		6	64.5	1	1.01153	0.000131		
9		7	128.5					
8.5					chi-square	3.658734		
6					df	5		
6								
5								
5								
4								
3								
2								
1		S		22				
1		N		194.5				
1								
1		S/N			0.113111			
1		x		0.96826	0.113098			
1								
1		a		6.375798				



log series

				observed	expected			Šenkvice 2 1996
27		1	2.5	12	10.61107	0.181804		
22		2	4.5	4	3.656499	0.032269		
20		3	8.5	2	3.374523	0.559876		
14		4	16.5	1	2.543792	0.936906		
8		5	32.5	3	1.37071	1.936651		
6		6	64.5					
3		7	128.5					
3					chi-square	3.647506		
3					df	4		
3								
2.5								
2								
2								
2								
2								
2		S		22				
1.5		N		128.5				
1.5								
1		S/N			0.171206			
1		x		0.9439	0.171207			
1								
1		a		7.637303				



log series

				observed	expected			Šamorín1
34		1	2.5	9	8.224763	0.073071		1996
29		2	4.5	1	2.999927	1.333268		38
20		3	8.5	2	2.989735	0.327646		27
19.5		4	16.5	3	2.623068	0.054165		18
19		5	32.5	4	1.898061	2.327715		15
10		6	64.5	1	0.974794	0.000652		11
9.8		7	128.5					8
9.5					chi-square	4.116517		8
7.5					df	5		7
7.5								6
4								5
2								5
2								5
2								5
2								5
2		S		20				4
1		N		183.8				4
1								3
1		S/N			0.108814			3
1		x		0.969865	0.108814			3
								2
		a		5.710911				1
								1
								1
								1
								1
								1



log series

		observed	expected			Šamorín1	
1	2.5	7	10.17063	0.988425		1999	1
2	4.5	5	3.629576	0.517433		36	2
3	8.5	5	3.51175	0.630708		33	3
4	16.5	2	2.905656	0.282282		28	4
5	32.5	4	1.875086	2.408026		28	5
6	64.5					19	6
						11	
			chi-square	4.826874		10	
			df	4		8	
						7	
						6	
						6	
						5	
						5	
						4	
S		23				4	
N		171				4	
			x			3	
S/N		0.134503	0.95981	0.134585		3	
						2	
a		7.160261				1	
						1	
						1	
						1	
						1	
						1	



log series

	observed	expected			Šamorín1		
2.5	7	10.30485	1.059892		2000		1 2.5
4.5	5	3.756148	0.411903		45		2 4.5
8.5	6	3.740039	1.365607		37		3 8.5
16.5	2	3.275533	0.496709		28		4 16.5
32.5	3	2.361956	0.172357		23		5 32.5
64.5	2	1.204963	0.524568		19		6 64.5
					13		
		chi-square	4.031036		9		
		df	5		7		
					6		
					6		
					6		
					5		
					5		
					5		
S	25				4		S
N	228				3		N
		x			2		
S/N	0.109649	0.96956	0.109634		1		S/N
					1		
a	7.158216				1		a
					1		
					1		
					1		
					1		
					1		
					1		

log series

observed	expected		Šamorín1			observed
10	10.79579	0.05866	2001		1	2.5
2	3.927367	0.945861	40		2	4.5
7	3.900092	2.463897	39		3	8.5
2	3.397662	0.574942	35		4	16.5
3	2.424726	0.136485	29		5	32.5
2	1.2126	0.511297	24		6	64.5
			14			
	chi-square	4.691143	12			
	df	5	8			
			8			
			7			
			7			
			7			
			6			
			5			
26			4		S	24
232			4		N	260
	x		3			
0.112069	0.96865	0.112064	2		S/N	0.092308
			1			
7.508594			1		a	6.448043
			1			
			1			
			1			
			1			

log series

expected			Šamorín2			observed	expected
9.361867	0.595866		1999		1	2.5	10 11.67436
3.458592	0.060807		17		2	4.5	7 3.551198
3.507258	3.478286		12		3	8.5	2 2.77538
3.185162	0.440985		8		4	16.5	1 1.513776
2.46643	0.088207		4		5	32.5	
1.443509	1.678315		4		6	64.5	
			4				
chi-square	6.342466		3				chi-square
df	5		3				df
			3				
			3				
			2				
			2				
			1				
			1				
			1		S	20	
			1		N	73	
x			1				x
0.9758	0.092291		1		S/N	0.273973	0.8893
			1				
			1		a	9.087035	

log series

		Šamorín2			observed	expected	
0.24014		2000		1	2.5	11	0.006974
3.349358		14		2	4.5	3	0.011556
0.216624		12		3	8.5	4	1.320816
0.174376		5		4	16.5		
		5		5	32.5		
		3		6	64.5		
		3					
3.980498		3				chi-square	1.339347
3		1				df	2
		1					
		1					
		1					
		1					
		1					
		1		S		18	
		1		N		56	
		1				x	
0.273972		1		S/N	0.321429	0.85909	0.321424
				a	9.185254		



## log normal

Dunajská Lužná						upper bound	logUB
1992		S	29			0.5	-0.30103
72		N	304.5		1	2.5	0.39794
55					2	4.5	0.653213
41		priemer	0.625504		3	8.5	0.929419
29		sm.odch.	0.56851		4	16.5	1.217484
13		sm.odch2	0.323204		5	32.5	1.511883
9					6	64.5	1.80956
9		x0	-0.30103		7	128.5	2.108903
8		gama	0.37649		8	256.5	2.409087
8		podľa gamy z tabuliek			9	512.5	2.709694
7		theta	0.2156		10	1024.5	3.010512
7					11	viac	viac
7		ux	0.425744				
6		Vx	0.508289				observed
6		z0	-1.0194			0.5	-
5.5					1	2.5	12
4		p0	0.154007		2	4.5	2
4					3	8.5	8
2		S*	34.27925		4	16.5	3
2					5	32.5	1
1					6	64.5	2
1		lambda	60.2966		7	128.5	1
1							
1							
1							
1							
1							
1							n_clas-3
1							
1							

log normal

StandUB	sum(exp.s p)	Dunajská Lužná				
-1.0194	5.27925	1993		S	30	
-0.039	16.60644	86		N	348.1	1
0.319056	21.42994	58.5				2
0.706472	26.05404	32.3		priemer	0.697759	3
1.110522	29.70684	27		sm.odch.	0.538853	4
1.523457	32.09147	24.85		sm.odch2	0.290362	5
1.940988	33.38354	15.5				6
2.360857	33.96675	14		x0	-0.30103	7
2.781906	34.18662	13		gama	0.291067	8
3.203547	34.25598	12.25		podľa gamy z tabuliek		9
3.625485	34.27431	9.45		theta	0.0882	10
1000000	34.27925	6				11
		5		ux	0.609665	
expected		5		Vx	0.378349	
5.27925		4.5		z0	-1.48056	
11.32719	0.039963	4				1
4.823501	1.652774	4		p0	0.069361	2
4.6241	2.46463	3				3
3.652799	0.116663	3		S*	32.23593	4
2.38463	0.803982	3				5
1.292068	0.38788	2.75				6
0.583208	0.297862	2.5		lambda	59.82329	7
		2				
		2				
		2				
		1.5				
chi-square	5.763756	1				
df	4	1				
		1				
		1				
		1				
		1				

log normal

upper bound	logUB	StandUB	sum(exp.s p)		Dunajská Lužná	
0.5	-0.30103	-1.48056	2.23593		1994	S
2.5	0.39794	-0.34421	11.77718		60	N
4.5	0.653213	0.070797	17.02767		53.5	
8.5	0.929419	0.519839	22.51397		46	priemer
16.5	1.217484	0.988161	27.02864		36	sm.odch.
32.5	1.511883	1.466781	29.94016		20.2	sm.odch2
64.5	1.80956	1.950729	31.41248		16	
128.5	2.108903	2.437387	31.99748		15.1	x0
256.5	2.409087	2.925412	32.18048		11	gama
512.5	2.709694	3.414123	32.22562		11	podľa gam
1024.5	3.010512	3.903178	32.2344		9	theta
viac	viac	1000000	32.23593		9	
					9	ux
	observed	expected			8.5	Vx
0.5	-	2.23593			8	z0
2.5	10	9.541246	0.022057		7	
4.5	7	5.250495	0.582949		6	p0
8.5	3	5.486298	1.126748		5	
16.5	5	4.514672	0.052173		5	S*
32.5	3	2.911518	0.002689		2	
64.5	1	1.472319	0.15152		2	
128.5	1	0.585006	0.294389		2	lambda
					1	
					1	
					1	
					1	
		chi-square	2.232525			
	n_clas-3	df	4			



log normal

			upper bound	logUB	StandUB	sum(exp.s p)		
25			0.5	-0.30103	-1.93393	0.682132		
345.3		1	2.5	0.39794	-0.7156	6.089754		
		2	4.5	0.653213	-0.27064	10.10161		
0.844653		3	8.5	0.929419	0.210796	14.98493		
0.536379		4	16.5	1.217484	0.712907	19.57103		
0.287703		5	32.5	1.511883	1.226059	22.85483		
		6	64.5	1.80956	1.744923	24.64203		
-0.30103		7	128.5	2.108903	2.266692	25.38154		
0.219187		8	256.5	2.409087	2.789928	25.61443		
y z tabuliek		9	512.5	2.709694	3.313899	25.67032		
0.03157		10	1024.5	3.010512	3.838239	25.68054		
		11	viac	viac	1000000	25.68213		
0.808483								
0.329141				observed	expected			
-1.93393			0.5	-	0.682132			
		1	2.5	7	5.407622	0.468906		
0.026561		2	4.5	0	4.011859	4.011859		
		3	8.5	6	4.883317	0.255355		
25.68213		4	16.5	7	4.586099	1.270561		
		5	32.5	1	3.283801	1.588326		
		6	64.5	4	1.787199	2.739757		
47.88056		7	128.5	0	0	0		
					chi-square	10.33476		
				n_clas-3	df	3		



## log normal

sum(exp.s p)		Čierna Voda				
0.51542		47		S	20	
6.099245		35		N	192	1
10.25007		20				2
14.84884		16		priemer	0.693718	3
18.48045		14		sm.odch.	0.514294	4
20.48919		9		sm.odch2	0.264499	5
21.26329		9				6
21.47101		7		x0	-0.30103	7
21.50986		7		gama	0.267299	8
21.51493		5		podľa gamy z tabuliek		9
21.51539		4		theta	0.06504	10
21.51542		4				11
		4		ux	0.62902	
		4		Vx	0.328857	
		2		z0	-1.62182	
0.031019		1				1
0.005481		1		p0	0.052421	2
1.46857		1				3
3.124253		1		S*	21.10642	4
0.506566		1				5
0.065927						6
				lambda	41.03958	7
5.201815						
3						

log normal

upper bound	logUB	StandUB	sum(exp.s p)			Devínska Nová Ves	
0.5	-0.30103	-1.62182	1.10642			1994	S
2.5	0.39794	-0.40296	7.249847			39	N
4.5	0.653213	0.042187	10.90833			24	
8.5	0.929419	0.523835	14.77035			23.5	priemer
16.5	1.217484	1.026163	17.88964			15	sm.odch.
32.5	1.511883	1.539536	19.80127			8	sm.odch2
64.5	1.80956	2.058624	20.68925			7	
128.5	2.108903	2.580618	21.00234			7	x0
256.5	2.409087	3.104079	21.08628			6.5	gama
512.5	2.709694	3.628276	21.10341			6	podľa gam
1024.5	3.010512	4.152842	21.10607			6	theta
viac	viac	1000000	21.10642			4	
						4	ux
	observed	expected				3	Vx
0.5	-	1.10642				2	z0
2.5	6	6.143427	0.003348			2	
4.5	4	3.658486	0.03188			2	p0
8.5	3	3.862015	0.192405			2	
16.5	4	3.119297	0.248658			2	S*
32.5	1	1.911623	0.434739			2	
64.5	2	0.887982	1.392576			1	
128.5						1	lambda
						1	
						1	
		chi-square	2.303606				
	n_clas-3	df	3				

log normal

			upper bound	logUB	StandUB	sum(exp.s p)		
23			0.5	-0.30103	-1.70161	1.069		
169		1	2.5	0.39794	-0.31692	9.041592		
		2	4.5	0.653213	0.18879	13.83657		
0.60732		3	8.5	0.929419	0.735968	18.51207		
0.45818		4	16.5	1.217484	1.306639	21.76638		
0.209929		5	32.5	1.511883	1.889859	23.36165		
		6	64.5	1.80956	2.479571	23.9107		
-0.30103		7	128.5	2.108903	3.072585	24.04346		
0.254428		8	256.5	2.409087	3.667265	24.06605		
y z tabuliek		9	512.5	2.709694	4.262782	24.06876		
0.05439		10	1024.5	3.010512	4.858717	24.06899		
		11	viac	viac	1000000	24.069		
0.557915								
0.254806				observed	expected			
-1.70161			0.5	-	1.069			
		1	2.5	10	7.972591	0.515565		
0.044414		2	4.5	3	4.794981	0.671944		
		3	8.5	6	4.675498	0.375212		
24.069		4	16.5	1	3.254304	1.561589		
		5	32.5	2	1.595277	0.102678		
		6	64.5	1	0.549045	0.37039		
52.5318		7	128.5					
					chi-square	3.597378		
				n_clas-3	df	3		



## log normal

sum(exp.s p)		Šenkvice 1				
2.226398		1995		S	20	
10.21875		33		N	131.5	1
14.18551		20				2
18.08375		18		priemer	0.529171	3
21.09454		15		sm.odch.	0.481806	4
22.91633		10		sm.odch2	0.232137	5
23.78131		7				6
24.10439		4		x0	-0.30103	7
24.19953		4		gama	0.336804	8
24.22166		4		podľa gamy z tabuliek		9
24.22573		2		theta	0.1473	10
24.2264		2				11
		2		ux	0.406883	
		2		Vx	0.333661	
		2		z0	-1.22554	
7.32E-06		1.5				1
0.975139		1		p0	0.110186	2
0.311388		1				3
1.314268		1		S*	22.47662	4
0.370706		1				5
0.021079		1				6
				lambda	46.65076	7
2.992585						
3						





log normal

			upper bound	logUB	StandUB	sum(exp.s p)		
22			0.5	-0.30103	-1.41781	1.86437		
128.5		1	2.5	0.39794	-0.04761	11.47912		
		2	4.5	0.653213	0.452809	16.10026		
0.502997		3	8.5	0.929419	0.99426	20.04492		
0.441906		4	16.5	1.217484	1.558958	22.44437		
0.195281		5	32.5	1.511883	2.136074	23.47451		
		6	64.5	1.80956	2.719613	23.78638		
-0.30103		7	128.5	2.108903	3.306421	23.85309		
0.302078		8	256.5	2.409087	3.894876	23.8632		
y z tabuliek		9	512.5	2.709694	4.48416	23.86428		
0.10046		10	1024.5	3.010512	5.073858	23.86437		
		11	viac	viac	1000000	23.86437		
0.422225								
0.260225				observed	expected			
-1.41781			0.5	-	1.86437			
		1	2.5	12	9.614752	0.591737		
0.078124		2	4.5	4	4.621135	0.083488		
		3	8.5	2	3.944665	0.958693		
23.86437		4	16.5	1	2.399443	0.816206		
		5	32.5	3	1.030141	3.766808		
		6	64.5					
54.00323		7	128.5					
					chi-square	6.216932		
				n_clas-3	df	2		



## log normal

sum(exp.s p)		Šenkvice 2				
2.282205		1997		S	20	
9.808837		34		N	183.8	1
13.40644		29				2
16.88534		20		priemer	0.684499	3
19.53981		19.5		sm.odch.	0.519175	4
21.13448		19		sm.odch2	0.269542	5
21.89027		10				6
22.17366		9.8		x0	-0.30103	7
22.25793		9.5		gama	0.277516	8
22.27783		7.5		podľa gamy z tabuliek		9
22.28157		7.5		theta	0.07507	10
22.2822		4				11
		2		ux	0.610515	
		2		Vx	0.342455	
		2		z0	-1.55767	
0.288417		2				1
0.709452		2		p0	0.059655	2
0.62869		1				3
0.682031		1		S*	21.2688	4
0.221758		1				5
2.048279		1				6
				lambda	40.96655	7
4.578627						
3						

## log normal

upper bound	logUB	StandUB	sum(exp.s p)		Šamorín1	1996		
0.5	-0.30103	-1.55767	1.2688			38		S
2.5	0.39794	-0.36325	7.618646			27		N
4.5	0.653213	0.072962	11.25294			18		
8.5	0.929419	0.544951	15.03931			15		priemer
16.5	1.217484	1.037204	18.0823			11		sm.odch.
32.5	1.511883	1.540282	19.95554			8		sm.odch2
64.5	1.80956	2.048959	20.83847			8		
128.5	2.108903	2.560485	21.15764			7		x0
256.5	2.409087	3.073448	21.2463			6		gama
512.5	2.709694	3.587132	21.26524			5		podľa gam
1024.5	3.010512	4.101178	21.26836			5		theta
viac	viac	1000000	21.2688			5		
						5		ux
	observed	expected				5		Vx
0.5	-	1.2688				4		z0
2.5	9	6.349846	1.106061			4		
4.5	1	3.634294	1.90945			3		p0
8.5	2	3.786366	0.842788			3		
16.5	3	3.042995	0.000607			3		S*
32.5	4	1.873239	2.414594			2		
64.5	1	0.882929	0.015523			1		
128.5						1		lambda
						1		
						1		
						1		
		chi-square	6.289024					
	n_clas-3	df	3					





## log normal

sum(exp.sp)	Šamorín1	1999					
1.040212		36		S	25		
8.621927		33		N	228		1
13.27895		28					2
17.96389		28		priemer	0.682126		3
21.37972		19		sm.odch.	0.504184		4
23.16186		11		sm.odch2	0.254202		5
23.8253		10					6
24.00165		8		x0	-0.30103		7
24.03517		7		gama	0.262987		8
24.03973		6		podľa gamy z tabuliek			9
24.04018		6		theta	0.06163		10
24.04021		5					11
		5		ux	0.621535		
		4		Vx	0.313773		
		4		z0	-1.64698		
0.044633		4					1
0.02526		3		p0	0.049781		2
0.021187		3					3
0.586843		2		S*	26.30972		4
2.760083		1					5
		1					6
		1		lambda	52.18274		
		1					
		1					
		1					
3.438005							
2							

## log normal

upper bound	logUB	StandUB	sum(exp.sp)	Šamorín1	2000		
0.5	-0.30103	-1.64698	1.309721		45		S
2.5	0.39794	-0.39917	9.073844		37		N
4.5	0.653213	0.056552	13.74812		28		
8.5	0.929419	0.549642	18.64616		23		priemer
16.5	1.217484	1.063902	22.52936		19		sm.odch.
32.5	1.511883	1.58947	24.83698		13		sm.odch2
64.5	1.80956	2.120888	25.86336		9		
128.5	2.108903	2.655282	26.20548		7		x0
256.5	2.409087	3.191177	26.29108		6		gama
512.5	2.709694	3.727826	26.30718		6		podľa gamy z tak
1024.5	3.010512	4.264853	26.30946		6		theta
viac	viac	1000000	26.30972		5		
					5		ux
	observed	expected			5		Vx
0.5	-	1.309721			4		z0
2.5	7	7.764123	0.075203		3		
4.5	5	4.674277	0.022698		2		p0
8.5	6	4.898038	0.24792		1		
16.5	2	3.883206	0.913282		1		S*
32.5	3	2.307612	0.207748		1		
64.5	2	1.026385	0.923557		1		
					1		lambda
					1		
					1		
					1		
					1		
		chi-square	2.390407				
	n_clas-3	df	3				





log normal

2001					upper bound	logUB	StandUB
40		S	24		0.5	-0.30103	-1.59129
39		N	260	1	2.5	0.39794	-0.43596
35				2	4.5	0.653213	-0.01402
29		priemer	0.733582	3	8.5	0.929419	0.442515
24		sm.odch.	0.540048	4	16.5	1.217484	0.918656
14		sm.odch2	0.291651	5	32.5	1.511883	1.405267
12				6	64.5	1.80956	1.897294
8		x0	-0.30103	7	128.5	2.108903	2.392077
8		gama	0.272464	8	256.5	2.409087	2.88825
7		podľa gamy z tabuliek		9	512.5	2.709694	3.38512
7		theta	0.06948	10	1024.5	3.010512	3.882341
7				11	viac	viac	1000000
6		ux	0.661698				
5		Vx	0.366024			observed	expected
4		z0	-1.59129		0.5	-	1.417605
4				1	2.5	7	7.006596
3		p0	0.055773	2	4.5	3	4.142391
2				3	8.5	7	4.487139
1		S*	25.41761	4	16.5	2	3.810621
1				5	32.5	2	2.520581
1				6	64.5	3	1.298243
1		lambda	47.06548				
1							
1							
						n_clas-3	chi-square df

## log normal

sum(exp.sp)	Šamorín2	1999					
1.417605		17		S	20		
8.424202		12		N	73		1
12.56659		8					2
17.05373		4		priemer	0.376472		3
20.86435		4		sm.odch.	0.376751		4
23.38493		4		sm.odch2	0.141941		5
24.68318		3					6
25.20469		3		x0	-0.30103		7
25.36837		3		gama	0.309234		8
25.40856		3		podľa gamy z tabuliek			9
25.41629		2		theta	0.10885		10
25.41761		2					11
		1		ux	0.302726		
		1		Vx	0.191904		
		1		z0	-1.37822		
6.21E-06		1					1
0.315049		1		p0	0.084068		2
1.407238		1					3
0.860319		1		S*	21.83567		4
0.107517		1					5
2.230689							6
				lambda	57.95783		
4.920818							
3							

log normal

upper bound	logUB	StandUB	sum(exp.sp)	Šamorín2	2000	
0.5	-0.30103	-1.37822	1.835671		14	S
2.5	0.39794	0.217349	12.7964		12	N
4.5	0.653213	0.800071	17.21012		5	
8.5	0.929419	1.43058	20.17015		5	priemer
16.5	1.217484	2.088159	21.43408		3	sm.odch.
32.5	1.511883	2.760198	21.7726		3	sm.odch2
64.5	1.80956	3.439717	21.82931		3	
128.5	2.108903	4.123042	21.83526		1	x0
256.5	2.409087	4.808286	21.83565		1	gama
512.5	2.709694	5.494494	21.83567		1	podľa gam
1024.5	3.010512	6.181185	21.83567		1	theta
viac	viac	1000000	21.83567		1	
					1	ux
	observed	expected			1	Vx
0.5	-	1.835671			1	z0
2.5	10	10.96073	0.084209		1	
4.5	7	4.41372	1.515466		1	p0
8.5	2	2.96003	0.311368		1	
16.5	1	1.263929	0.055113			S*
32.5						
64.5						
						lambda
		chi-square	1.966156			
	n_clas-3	df	1			

log normal

			upper bound	logUB	StandUB	sum(exp.sp)
18			0.5	-0.30103	-0.66098	6.138791
56		1	2.5	0.39794	0.649533	17.91105
		2	4.5	0.653213	1.128148	21.00971
0.280812		3	8.5	0.929419	1.646013	22.93474
0.388651		4	16.5	1.217484	2.186112	23.7911
0.15105		5	32.5	1.511883	2.738088	24.0642
		6	64.5	1.80956	3.296208	24.12696
-0.30103		7	128.5	2.108903	3.857453	24.13741
0.446181		8	256.5	2.409087	4.420274	24.13867
y z tabuliek		9	512.5	2.709694	4.983888	24.13878
0.3941		10	1024.5	3.010512	5.547898	24.13879
		11	viac	viac	1000000	24.13879
0.051508						
0.284469				observed	expected	
-0.66098			0.5	-	6.138791	
		1	2.5	11	11.77226	0.050661
0.254312		2	4.5	3	3.098656	0.003141
		3	8.5	4	1.925025	2.236604
24.13879		4	16.5			
		5	32.5			
		6	64.5			
62.1091						
					chi-square	2.290406
				n_clas-3	df	0

broken stick

	Dunajská Lužná			observed	expected			Dunajská Lužná
	1992	1	2.5	12	4.672052	11.49363		1993
		2	4.5	2	3.907127	0.930897		
		3	8.5	8	5.986234	0.67743		
		4	16.5	3	7.028696	2.309161		
		5	32.5	1	4.862846	3.068487		
		6	64.5	2	1.192462	0.546866		
		7	128.5	1	0.036945	25.10409		
		8	256.5	0	6.25E-06	6.25E-06		
		9	512.5	0	-0.00067	-0.00067		
		10	1024.5	0				
					chi-square	44.1299		
					df	8 (6)		
		S		29				
		N		304.5				

broken stick

		observed	expected			Dunajská Lužná 1994		
1	2.5	10	4.432755	6.992088			1	2.5
2	4.5	7	3.769691	2.768104			2	4.5
3	8.5	3	5.921331	1.44126			3	8.5
4	16.5	5	7.308469	0.729158			4	16.5
5	32.5	3	5.586911	1.197819			5	32.5
6	64.5	1	1.669249	0.268321			6	64.5
7	128.5	1	0.078658	10.79196			7	128.5
8	256.5	0	4.73E-05	4.73E-05			8	256.5
9	512.5	0	1.07E-08	1.07E-08			9	512.5
			chi-square	24.18876				
			df	8 (6)				
	S	30					S	
	N	348.1					N	

broken stick

observed	expected				Galanta			observed
7	3.145798	4.722133				1	2.5	6
0	2.75078	2.75078				2	4.5	4
6	4.501811	0.498593				3	8.5	2
7	6.024653	0.157901				4	16.5	7
1	5.386903	3.572538				5	32.5	1
4	2.156057	1.577012				6	64.5	1
0	0.174482	0.174482				7	128.5	0
0	0.000352	0.000352				8	256.5	0
0	-6.9E-07	-6.9E-07						
	chi-square	13.45379						
	df	8 (5)						
25						S		21
345.3						N		187



broken stick

expected			Čierna Voda		observed	expected	
3.859409	1.187262			1	2.5	6	3.440784 1.903515
3.141113	0.234849			2	4.5	4	2.845522 0.468392
4.6173	1.483607			3	8.5	3	4.28273 0.384193
4.969643	0.829507			4	16.5	4	4.831315 0.143043
2.847589	1.198763			5	32.5	1	3.035982 1.365364
0.456523	0.646993			6	64.5	2	0.581176 3.463769
0.004443	0.004443			7	128.5	0	0.008368 0.008368
-5.1E-08	-5.1E-08			8	256.5	0	3.47E-08 3.47E-08
chi-square	5.585423					chi-square	7.736644
df	7 (5)					df	7 (5)
					S	20	
					N	192	

broken stick

	Devínska Nová Ves 1994			observed	expected			Devínska Nová Ves 1995
		1	2.5	10	4.975035	5.075395		
		2	4.5	3	3.866009	0.193991		
		3	8.5	6	5.307977	0.090222		
		4	16.5	1	4.98722	3.187732		
		5	32.5	2	2.188452	0.016228		
		6	64.5	1	0.208676	3.000801		
		7	128.5	0	0.000586	0.000586		
		8	256.5	0	-1.2E-05	-1.2E-05		
		9	512.5	0				
					chi-square	11.56494		
					df	7 (5)		
		S		23				
		N		169				

broken stick

		observed	expected			Šenkvice 1		
1	2.5	8	4.074366	3.782333		1995	1	2.5
2	4.5	2	3.308208	0.517322			2	4.5
3	8.5	5	4.846856	0.004839			3	8.5
4	16.5	5	5.185898	0.006664			4	16.5
5	32.5	1	2.944608	1.284211			5	32.5
6	64.5	1	0.468105	0.604376			6	64.5
7	128.5	0	0.00465	0.00465			7	128.5
8	256.5	0	3.87E-09	3.87E-09			8	256.5
9	512.5	0					9	512.5
							10	1024.5
			chi-square	6.204395				
			df	7 (5)				
	S	22						S
	N	194.5						N

broken stick

observed	expected			Šenkvice 1			observed	expected
11	4.711799	8.392012		1996	1	2.5	12	5.702409
3	3.564649	0.089442			2	4.5	4	4.151694
1	4.698203	2.911051			3	8.5	2	5.174068
2	4.049454	1.037241			4	16.5	1	3.994952
2	1.473225	0.188356			5	32.5	3	1.177708
1	0.090702	9.115797			6	64.5	0	0.048111
0	5.44E-05	5.44E-05			7	128.5	0	9.62E-06
0	1.000054	1.000054			8	256.5	0	
0					9	512.5		
0								
	chi-square	22.73401						chi-square
	df	7 (5)						df
20						S	22	
131.5						N	128.5	

broken stick

		Šenkvice 2			observed	expected		
6.954896		1996	1	2.5	9	3.715208	7.517484	
0.005543			2	4.5	2	3.017321	0.343001	
1.947154			3	8.5	2	4.420196	1.325133	
2.245268			4	16.5	4	4.720733	0.110037	
2.81967			5	32.5	1	2.654248	1.031003	
0.048111			6	64.5	2	0.404861	6.284795	
9.62E-06			7	128.5	0	0.003314	0.003314	
			8	256.5	0	8.32E-06	8.32E-06	
			9	512.5				
14.02065						chi-square	16.61478	
6 (4)						df	7 (5)	
				S	20			
				N	175.5			

broken stick

Šenkvice 2 1997			observed	expected				
	1	2.5	9	3.571977	8.248496			
	2	4.5	1	2.928754	1.270196			
	3	8.5	2	4.351849	1.270999			
	4	16.5	3	4.783471	0.66495			
	5	32.5	4	2.851484	0.462597			
	6	64.5	1	0.490181	0.530243			
	7	128.5	0	0.005422	0.005422			
	8	256.5	0	4.45E-07	4.45E-07			
	9	512.5						
				chi-square	12.4529			
				df	7 (5)			
		S	20					
		N	183.8					

broken stick

Šamorín1 1996			observed	expected			Šamorín1 1997	
	1	2.5	6	5.341835	0.081092			1
	2	4.5	5	4.163202	0.168195			2
	3	8.5	9	5.743715	1.846085			3
	4	16.5	2	5.458507	2.191308			4
	5	32.5	2	2.465715	0.087962			5
	6	64.5	1	0.254653	2.181559			6
	7	128.5	0	0.000974	0.000974			7
	8	256.5	0	-1.2E-09	-1.2E-09			8
				chi-square	6.557176			
				df	7(5)			
		S	25					
		N	187					

broken stick

	observed	expected			Šamorín1			observed
2.5	7	4.927458	0.871734		1999	1	2.5	7
4.5	5	3.840513	0.35006			2	4.5	5
8.5	5	5.296411	0.016588			3	8.5	6
16.5	2	5.020949	1.817611			4	16.5	2
32.5	4	2.242943	1.376427			5	32.5	3
64.5	0	0.221784	0.221784			6	64.5	2
128.5	0	0.000687	0.000687			7	128.5	0
256.5	0	-5.5E-06	-5.5E-06			8	256.5	0
		chi-square	4.654886					
		df	7 (4)					
S	23					S	25	
N	171					N	228	



broken stick

expected			Šamorín1			observed	expected	
4.5274	1.350389		2000	1	2.5	10	4.801863	5.627112
3.692034	0.46337			2	4.5	2	3.895707	0.922478
5.447098	0.056122			3	8.5	7	5.704689	0.294114
5.92139	2.596907			4	16.5	2	6.112163	2.766596
3.495011	0.07011			5	32.5	3	3.511728	0.074569
0.614855	3.120454			6	64.5	2	0.58959	3.37397
0.008542	0.008542			7	128.5	0	0.007547	0.007547
5.68E-08	5.68E-08			8	256.5	0	4.47E-08	4.47E-08
chi-square	7.665894						chi-square	13.06639
df	7 (5)						df	7 (5)
					S	26		
					N	232		

broken stick

	Šamorín1 2001			observed	expected			Šamorín2 1999
		1	2.5	7	3.741875	2.836913		
		2	4.5	3	3.154171	0.007536		
		3	8.5	7	4.887382	0.9132		
		4	16.5	2	5.859372	2.542039		
		5	32.5	2	4.198336	1.151094		
		6	64.5	3	1.078256	3.425067		
		7	128.5	0	0.034034	0.034034		
		8	256.5	0	3.72E-06	3.72E-06		
					chi-square	10.90989		
					df	7 (5)		
		S		24				
		N		260				

broken stick

		observed	expected			Šamorín2		
1	2.5	10	7.218193	1.072076		2000	1	2.5
2	4.5	7	4.33346	1.640821			2	4.5
3	8.5	2	4.055585	1.041879			3	8.5
4	16.5	1	1.743828	0.317279			4	16.5
5	32.5	0	0.152793	0.152793			5	32.5
6	64.5	0	0.000273	0.000273			6	64.5
			chi-square	4.225121				
			df	5 (3)				
	S	20					S	
	N	73					N	

broken stick

observed	expected	
11	7.14939	2.073911
3	3.933795	0.221662
4	3.223977	0.186792
0	1.043329	1.043329
0	0.047316	0.047316
0	6.84E-06	6.84E-06
	chi-square	3.573017
	df	5 (2)
18		
56		