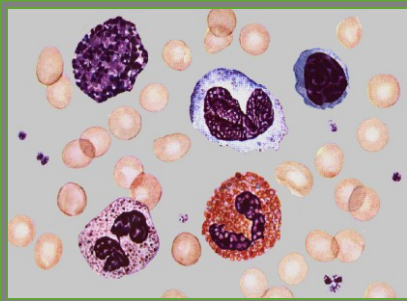


Průtoková cytometrie a sorting

Karel Souček & Radek Fedr

Biofyzikální ústav AV ČR, Masarykova Univerzita,
FNUSA-ICRC

Tyto částice mají něco společného ...



Blood cells



Chromosomes



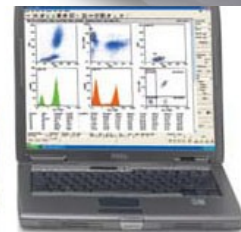
Algae



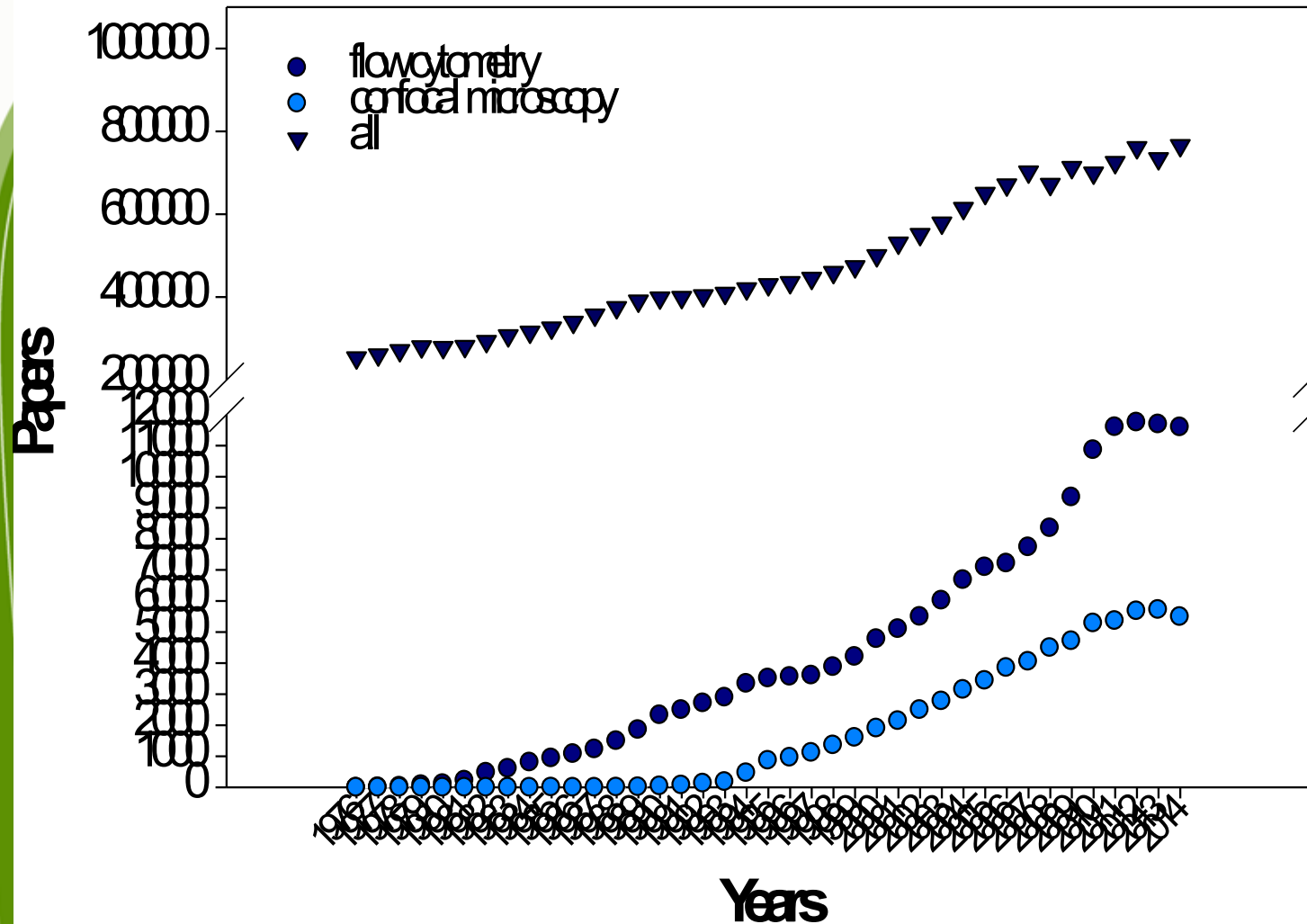
Protozoa

... určité parametry těchto částic mohou být měřeny pomocí průtokové cytometrie.

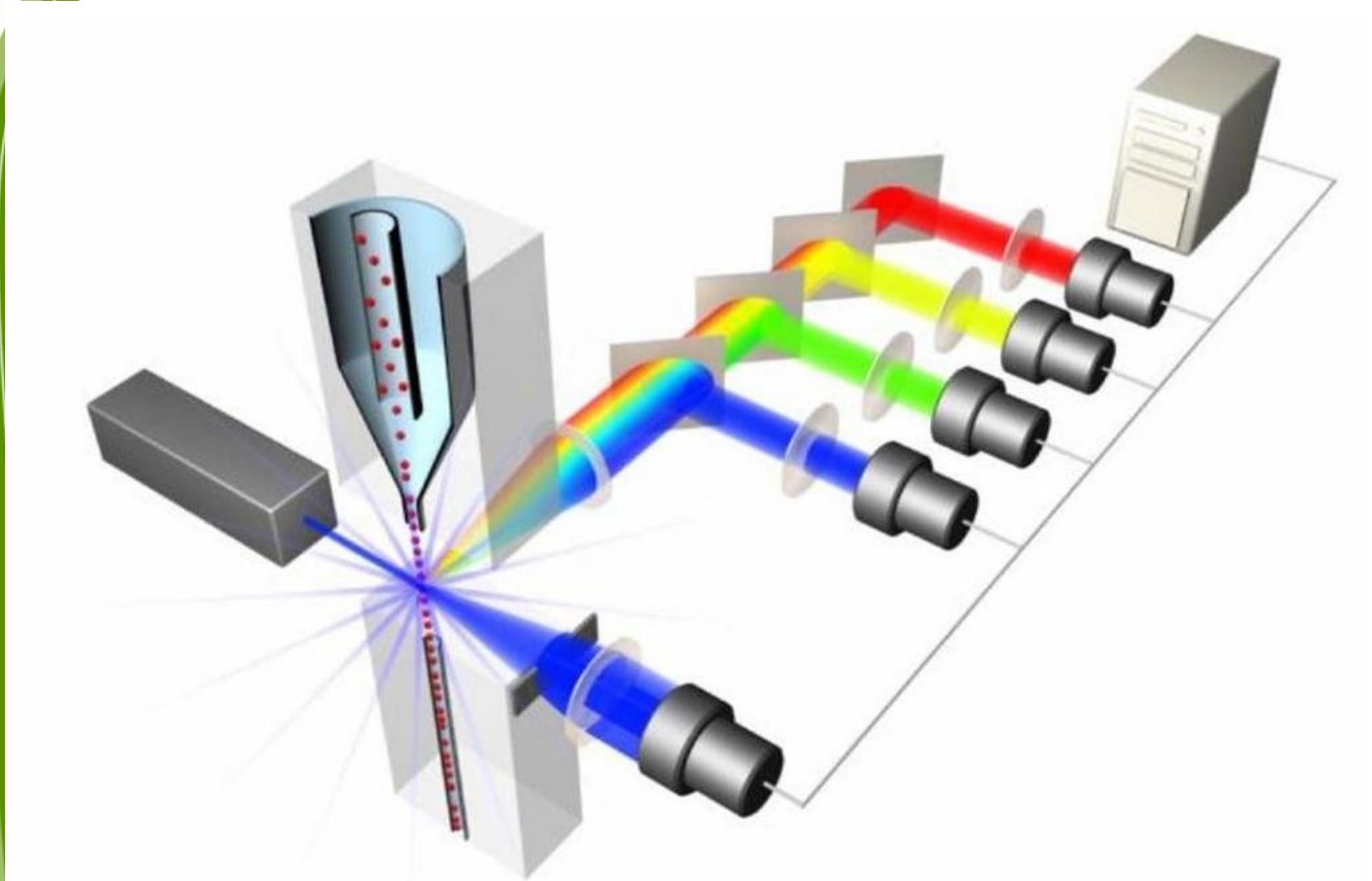
Komerční zařízení a vývoj



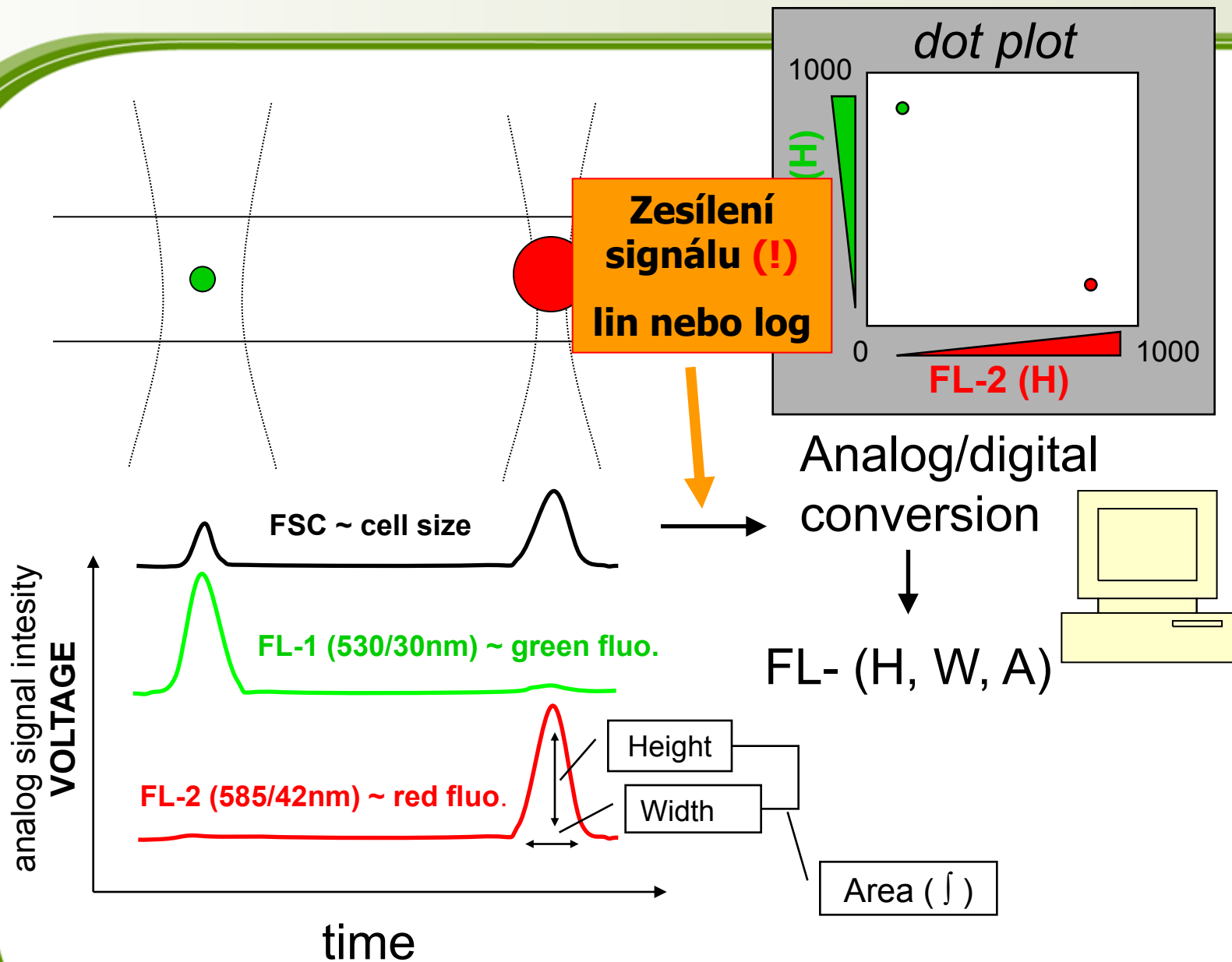
Cytometry Publications/Year



Co je průtokový cytometr?



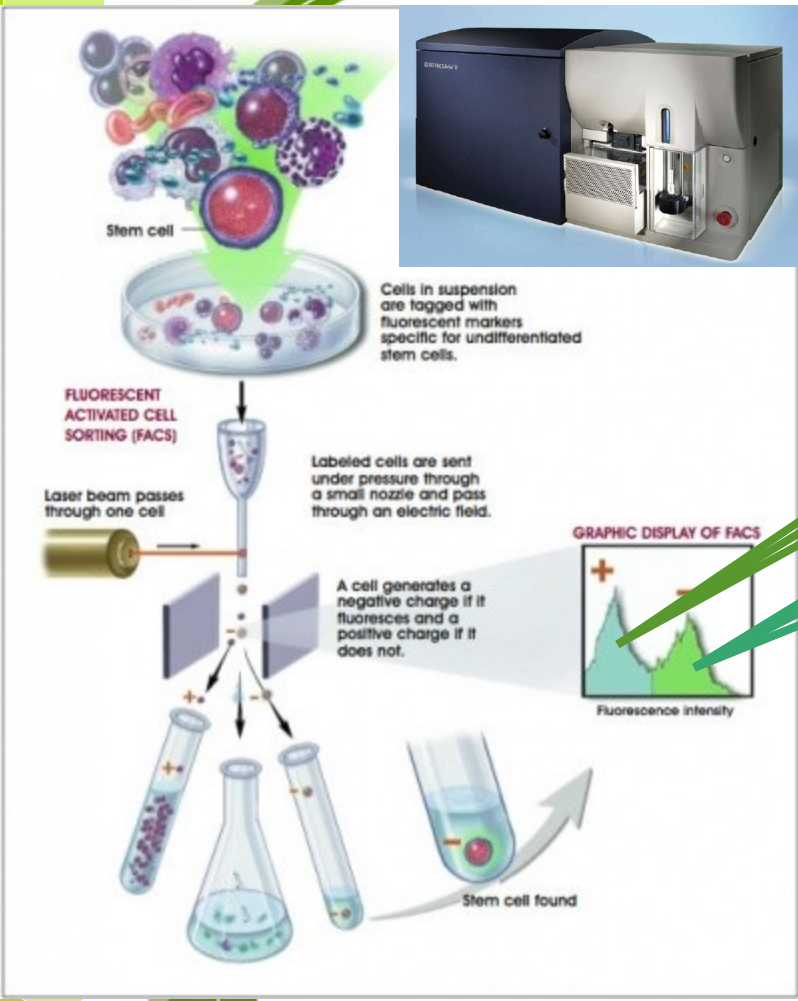
Signal processing



Co můžeme analyzovat pomocí průtokové cytometrie?

- ▶ Počítat částice v suspenzi
- ▶ Oddělit živé částice od neživých
- ▶ Hodnotit 10^5 až 10^6 částic za méně než 1 minutu
- ▶ Kvantifikovat rozptyl světla, a intenzitu fluorescence pro jednotlivé buňky (částice)
- ▶ Fyzicky separovat jednotlivé částice (populace) pro další analýzu

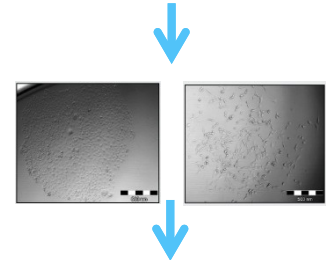
new automatic cell cloning assay (ACCA) for determination of clonogenic capacity of CSCs



single cell/well
up to 384 well plate



re-culture after sorting (2D, 3D)



analysis: CyQuant, ATP, xCelligence, microscopy



Jaké jsou principy?

- Rozptyl světla (Light scatter) pomocí laseru nebo UV lampy
- Detekce specifické fluorescence
- Hydrodynamicky zaostřený proud částic
- Elektrostatická separace částic
- Možnost multivariační analýzy dat

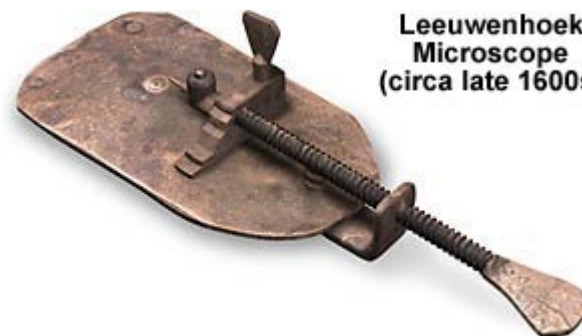
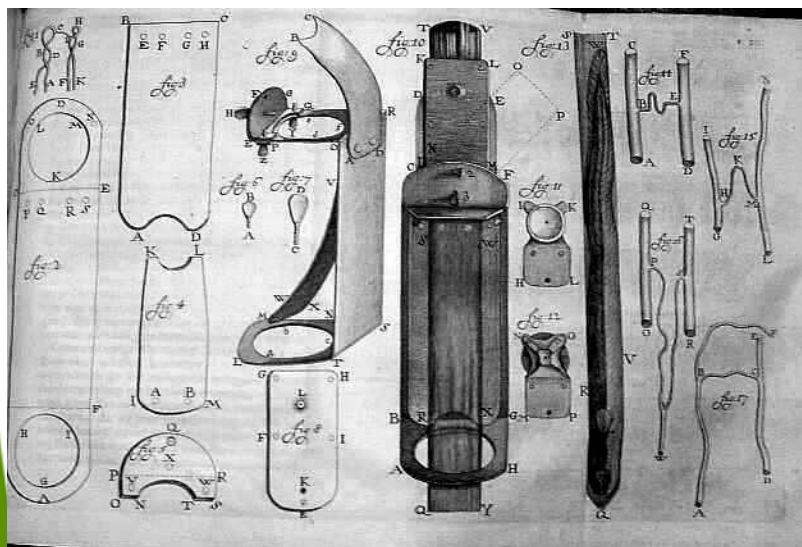
Stain Your Own Cell



Historie barvení biologických materiálů

Až do poloviny 19. století – *byly používány pouze přírodní barviva*

Anton van Leeuwenhoek použil v roce 1719 šafrán na obarvení svalových buněk

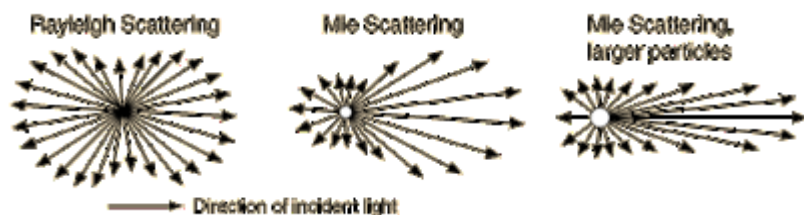


Leeuwenhoek
Microscope
(circa late 1600s)



Rozptyl světla

- Hmota rozptyluje světlo vlnových délek které není schopna absorbovat
- Viditelné spektrum je 350-850 nm proto malé částice a molekuly ($< 1/10 \lambda$) spíše viditelné světlo rozptylují
- Pro malé částice byl popsán tzv. **Rayleightův rozptyl (scatter)** jehož intenzita je \sim stejná všemi směry
- Rozptyl větších částic charakterizuje tzv. **Mieův rozptyl**. Jeho množství je větší ve směru v jakém dopadá světlo na ozářenou částici \Rightarrow *na tomto principu je založeno měření velikosti částic pomocí průtokového cytometru*



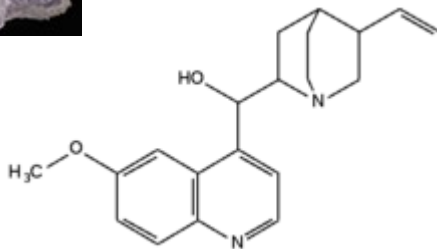
George Gabriel Stokes (1819 – 1903)

Anglický fyzik a matematik
působící na univerzitě v Cambridge



<http://www.nndb.com/people/131/000097837/>

1852 – popsal fluorescenci
Název vznikl z anglického slova *fluospar*
(fluorit, kazivec = nerost CaF_2)
- ke svému pozorování použil roztok
chininu, jako zdroj světla sluneční
paprsky, jako excitační filtr sloužilo tmavě
modré okenní sklo a jako emisní filtr byla
použita sklenice bílého vína



G. C. Stokes „*On the Change of Refrangibility of Light*“ *Philosophical Transactions of the Royal Society of London*, 1852, vol. 142, p. 463.)

[463]

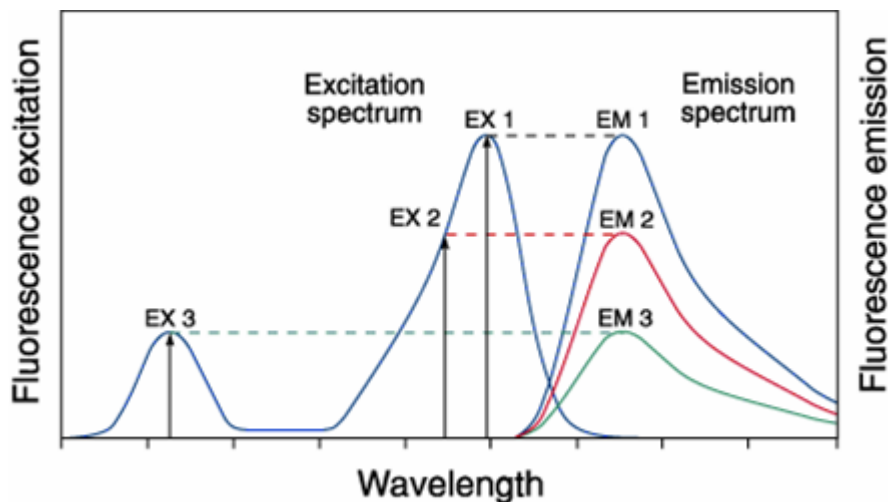
XXX. *On the Change of Refrangibility of Light.* By G. G. STOKES, M.A., F.R.S.,
Fellow of Pembroke College, and Lucasian Professor of Mathematics in the
University of Cambridge.

Received May 11,—Read May 27, 1852.

Fluorescenční spektra

Fluorescenční proces je cyklický.

Kromě fluorochromu nevratně zničeného (photobleaching - „vysvícení“) může být opakovaně excitován.



Excitation of a fluorophore at three different wavelengths (EX 1, EX 2, EX 3) does not change the emission profile but does produce variations in fluorescence emission intensity (EM 1, EM 2, EM 3) that correspond to the amplitude of the excitation spectrum.

Detekce fluorescence

Vybavení pro fluorescenci

- (1) zdroj excitace
- (2) fluochrom
- (3) vlnové filtry pro izolaci emitovaných fotonů od excitovaných
- (4) detektory pro registraci emitovaných fotonů

Fluorescenční přístroje

- spektrofluorometer měří průměrné vlastnosti objemu vzorku v kyvetě.
- fluorescenční mikroskop popisuje fluorescenci jako jev v prostorovém systému souřadnic
- flow cytometer měří fluorescenci v proudícím toku, umožňuje detekovat a kvantifikovat subpopulace uvnitř velkého vzorku

Fluorescenční signál

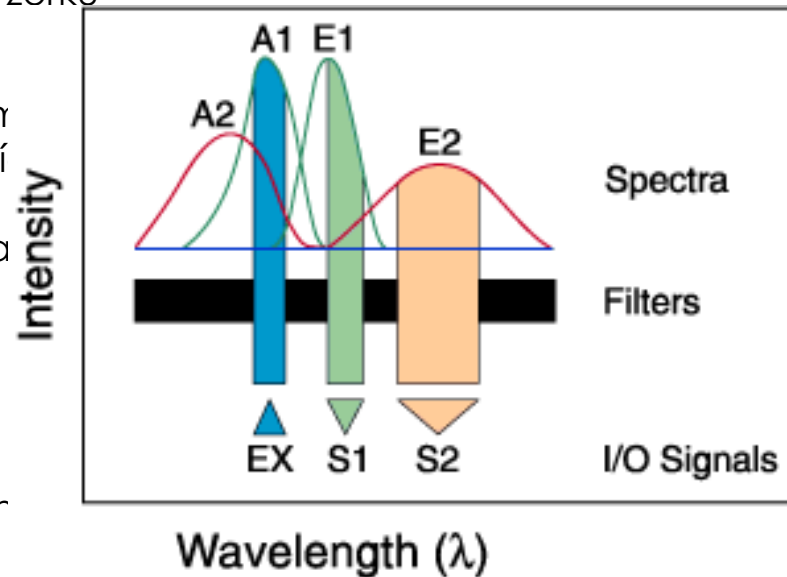
- spektrofluorometer je flexibilní, umožňuje n v kontinuálním spektru excitačních a emisní vlnových délek
- flow cytometr potřebuje fluorescenční značkovatelné určitou vlnovou délkou.

Fluorescence pozadí

- endogenní složky - autofluorescence
- nenávanané nebo nespecificky vázané zr = reagenční pozadí

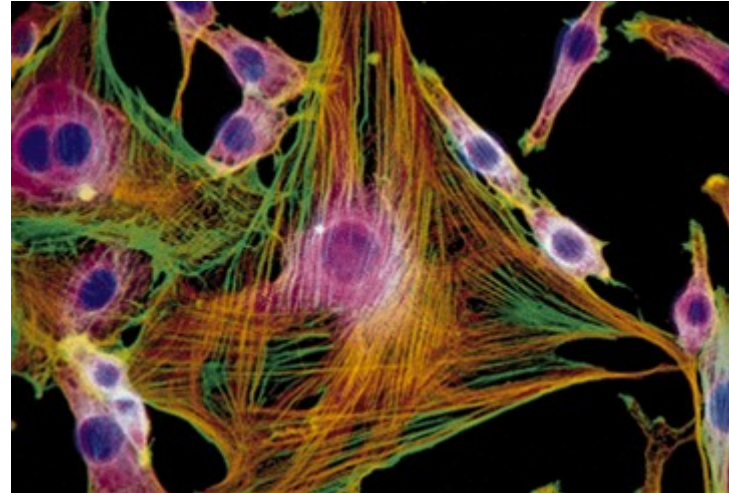
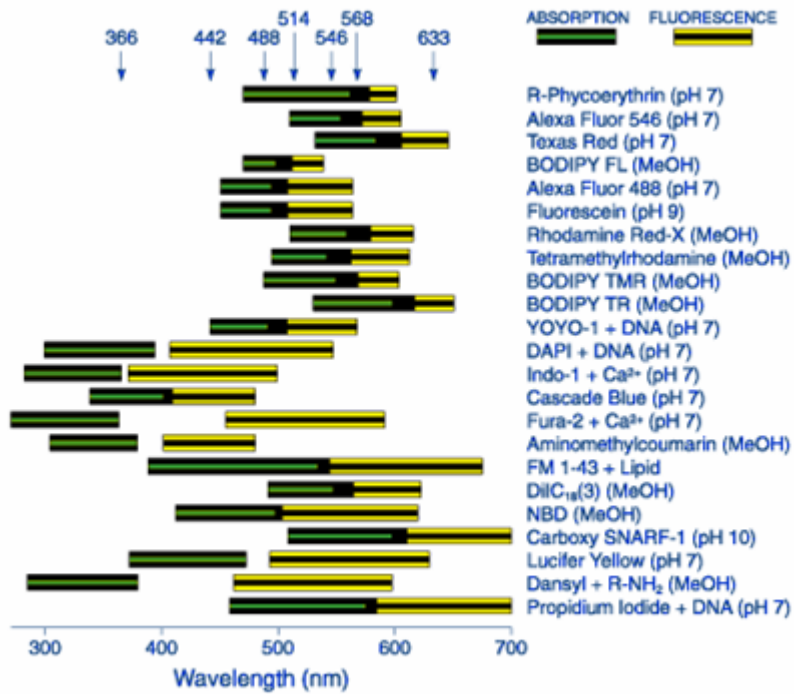
Vícebarevné značení

- dvě a více značek, zároveň monitoruje různé funkce
- nutné: vhodně zvolit značky zdroj excitace a separační filtry



Fluorescence Output of Fluorophores

Comparing Different Dyes



Mouse 3T3

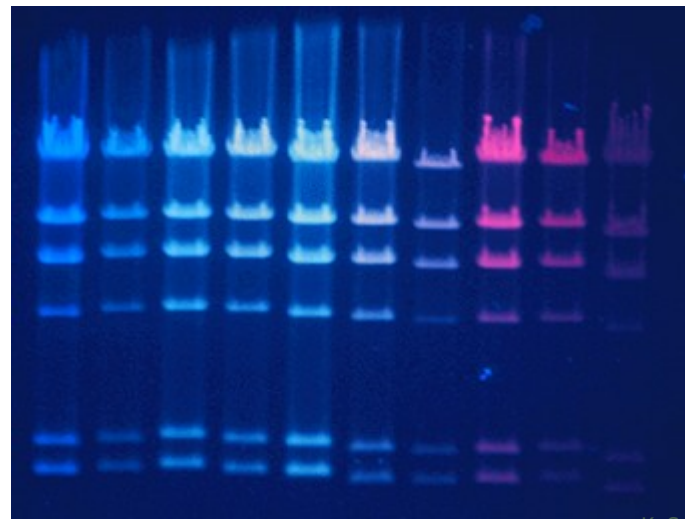
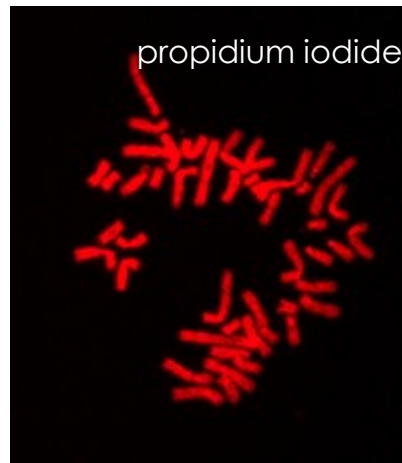
F-actin ~
BODIPY FL phalloidin

anti-β tubulin ~
Texas Red
goat anti-mouse IgG

DNA ~
DAPI

POPO-1 BOBO-1 YOYO-1 TOTO-1 JOJO-1 POPO-3 LOLO-1 BOBO-3 YOYO-3 TOTO-3

λ Hind III



Technické součásti

- Zdroje světla
- Detekční systémy
- Fluidní systém
- Separace
- Sběr dat
- Analýza dat

Wallace Coulter



- **Wallace Coulter - Coulter orifice - 1956 -**
- (patent 1953) – měření změny vodivosti během průchodu buněk v suspenzi malým otvorem

Originální
patentová
aplikace
W.Coultera 1953

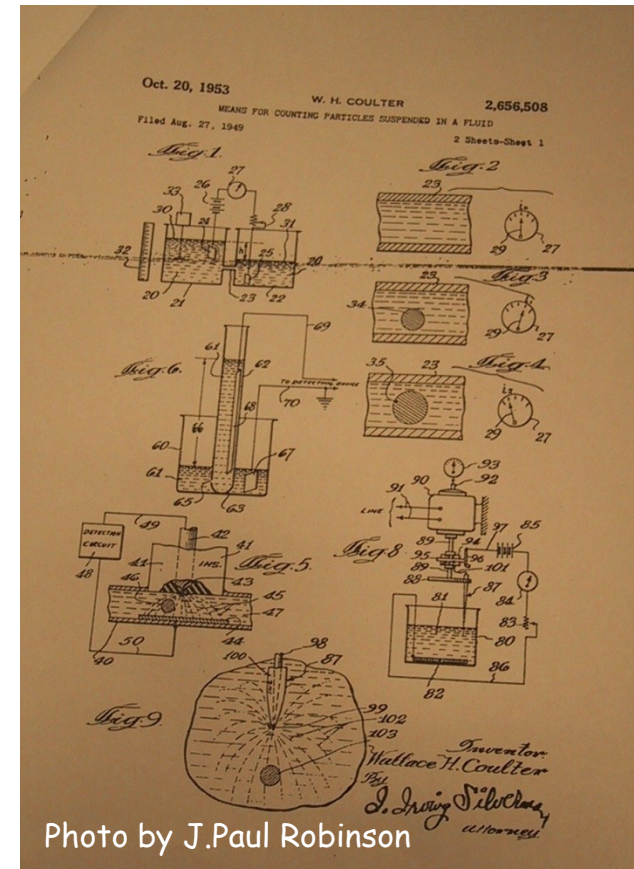
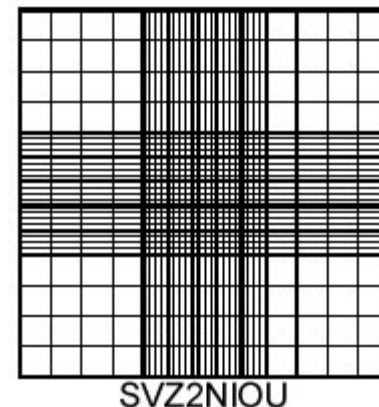
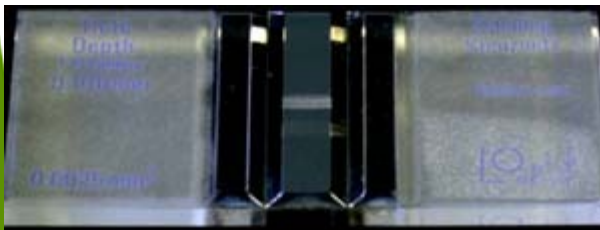


Photo by J. Paul Robinson

Jak počítat buňky?

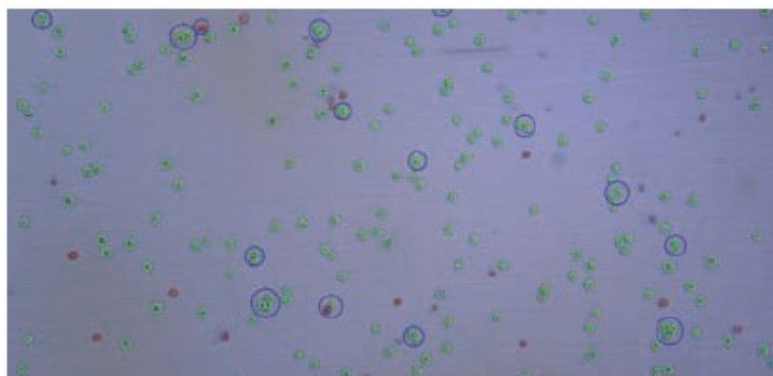
- ▶ Hemocytometer (Bürkerova komůrka) byla standardem pro počítání buněk do ~ 1950
- ▶ Rozměry jsou 3x3x0.1 mm. Obvykle jsou červené krvinky ($1 \times 10^6/\text{mm}^3$) počítány po naředění 1:200
- ▶ Leukocyty ($5 \times 10^3/\text{mm}^3$) jsou ředěny 1:10 v roztoku lyzujícím červené krvinky
- ▶ Statistická chyba:
 - ▶ koeficient variance (CV) je při 500 spočítaných buňkách 4.4%
 - ▶ chyba pipetování a ředění je ~ 10%



Roche Innovatis Cedex



High Resolution Color Image



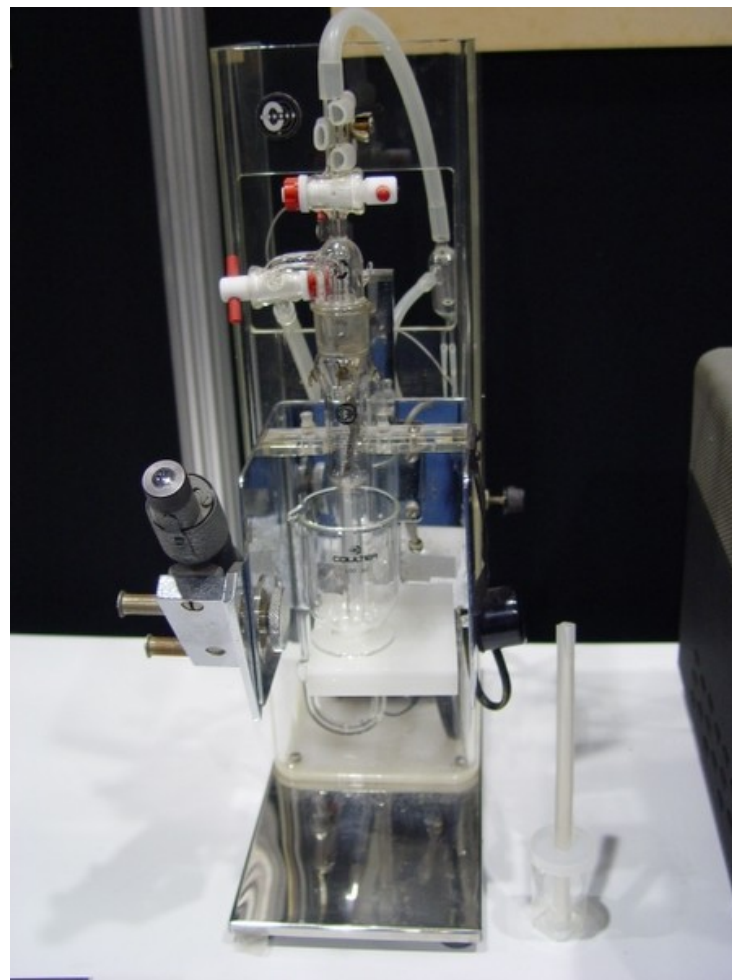
Visual Labeling



Coulter Counter



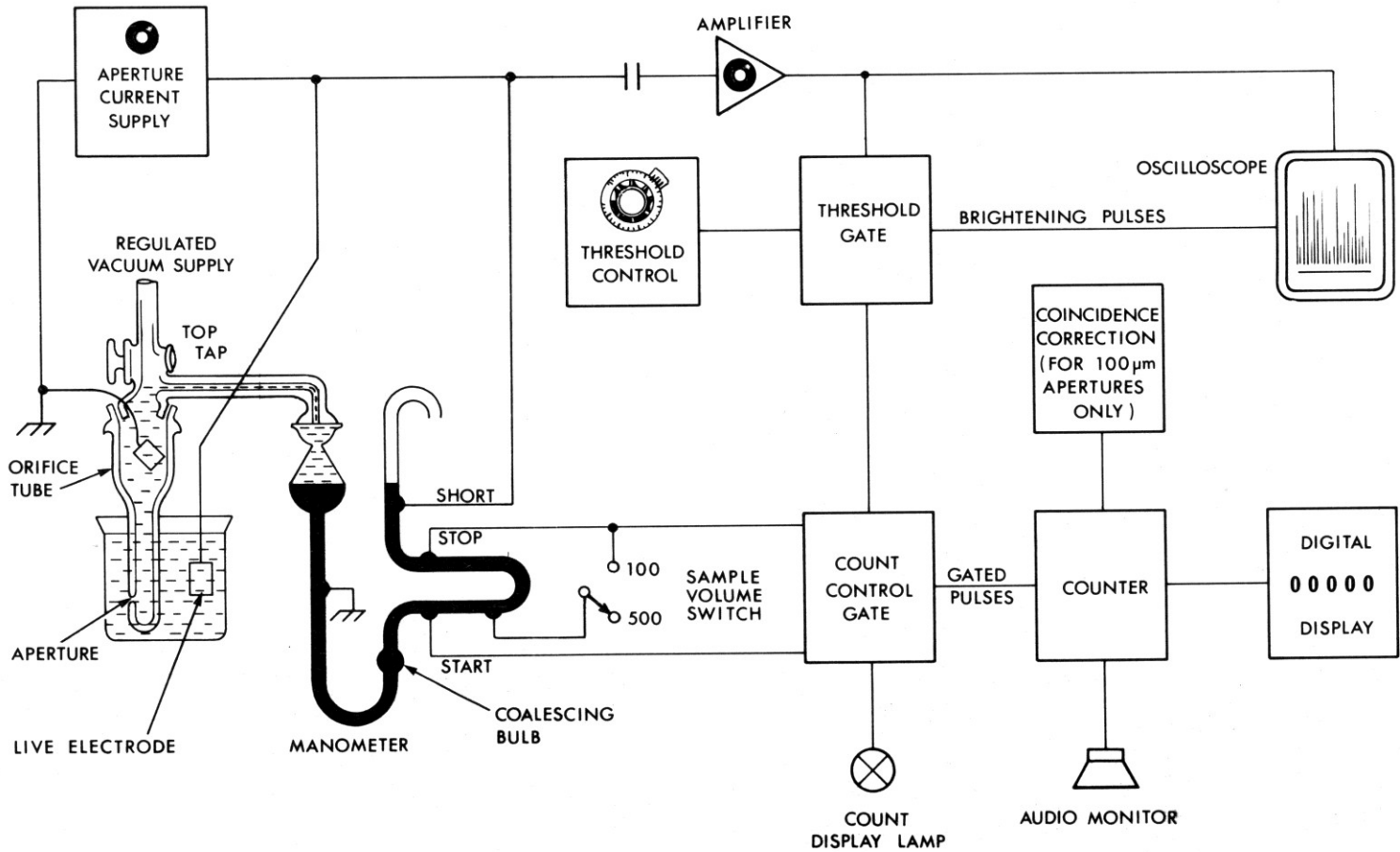
První komerční verze CC



Coulter Counter

1-2

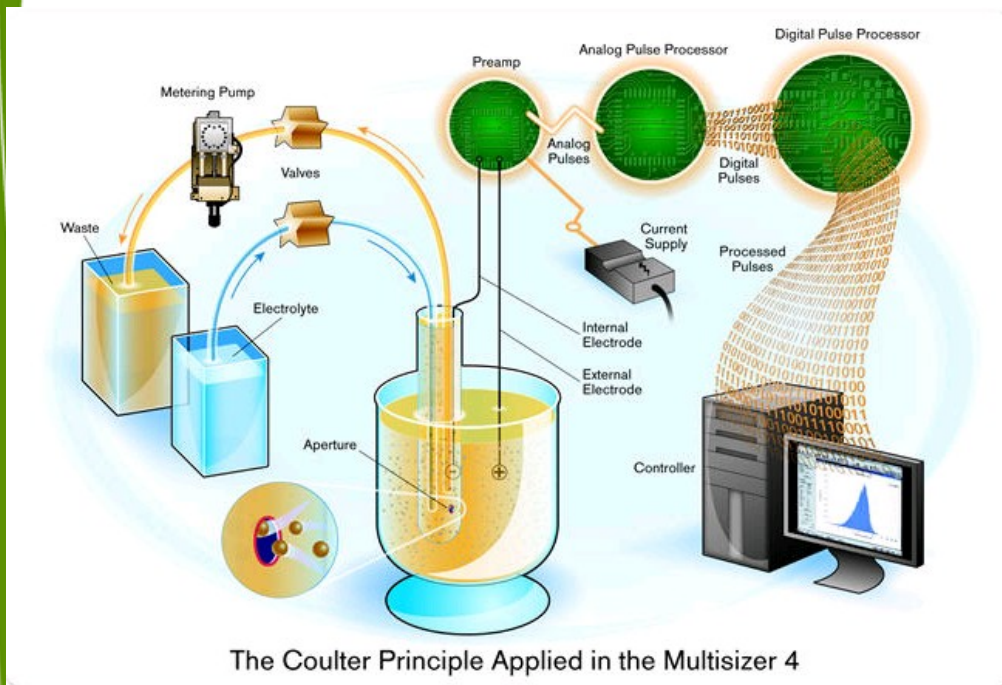
FIG.1-1 FUNCTIONAL BLOCK DIAGRAM FOR MODEL ZF COUNTER



July '80

Beckman Coulter

➔ Multisizer™ 3&4 COULTER COUNTER®



Roche Innovatis CASY TT

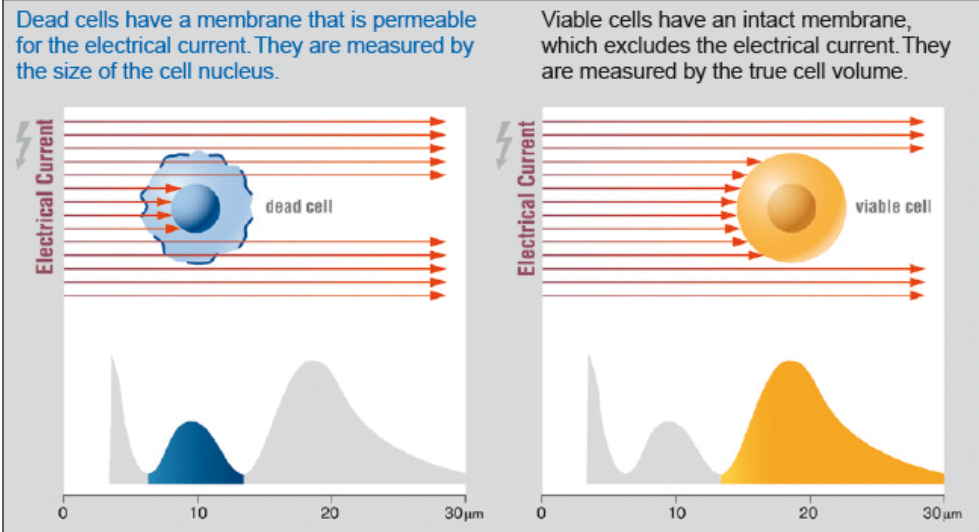


Figure 1: Viability Measurement by Electrical Current Exclusion. The status of the cell membrane distinctively affects the electrical signal generated when a cell is passing the measuring pore.



Cytograph. Stolní přístroj schopný měřit rozptyl světla **He-Ne laseru** (1970).

Technické součásti

■ Detekční systémy

Fotonásobiče (Photomultiplier Tubes (PMTs))

dříve 1-2

nyní 4-8 (12-18)

Diody

detekce rozptylu světla (light scatters)

■ Zdroje světla

Lasery (350-363, 420, 457, 488, 514, 532, 600, 633 nm)

Argon ion, Krypton ion, HeNe, HeCd, Yag

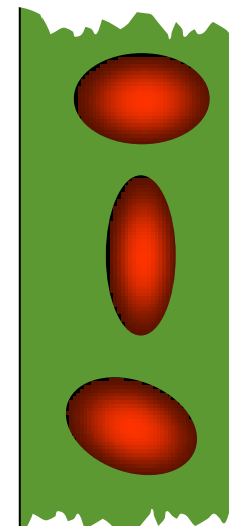
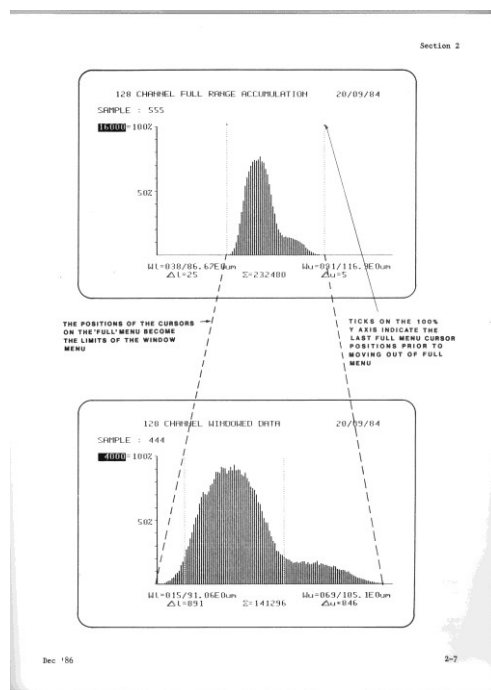
UV (Arc) Lampy

Mercury, Mercury-Xenon

Mack Fulwyler- sorter

Mack Fulwyler - sorter 1965 - Los Alamos National Labs – jeho sorter separoval částice na základě elektronicky měřeného objemu (stejný princip jako Coulter counter) a separoval pomocí elektrostatického vychýlení.

Cílem bylo sortovat červené krvinky, protože u nich byla naměřena bimodální distribuce buněčného objemu. Princip separace byl založen na principu inkoustové tiskárny Richarda Sweeta ze Stanfordu (1965)



Po té co bylo objasněno, že bimodalita červených krvinek je artefakt byla tato skupina schopna separovat **neutrofilů a lymfocytů** z krve.

Richard Sweet

Richard Sweet vyvinul elektrostatickou inkoustovou tiskárnu jejíž princip využil Mack Fulwyler pro svůj buněčný sorter.

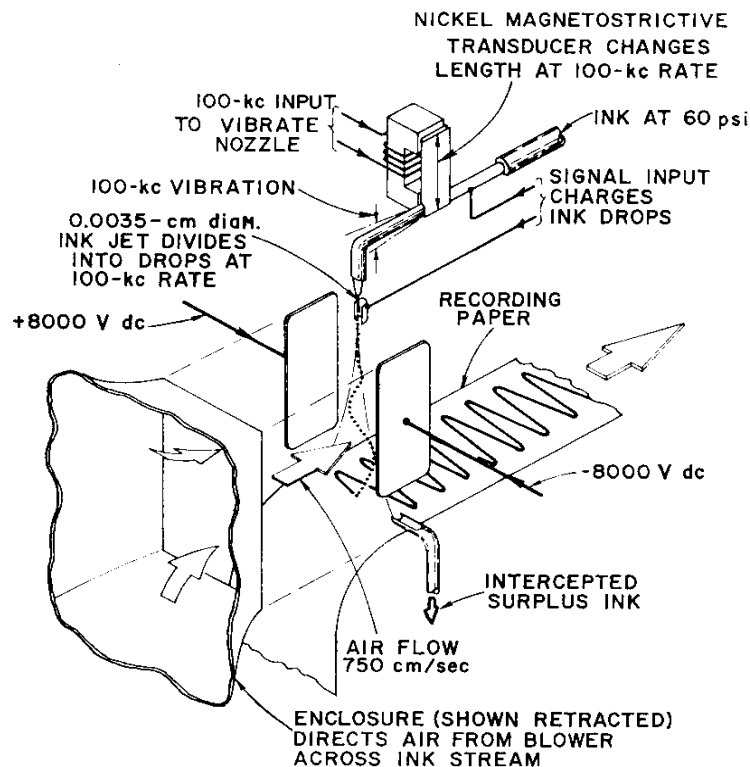


FIG. 1. Ink-jet oscillograph.

THE REVIEW OF SCIENTIFIC INSTRUMENTS

VOLUME 36, NUMBER 2

FEBRUARY 1965

High Frequency Recording with Electrostatically Deflected Ink Jets*

RICHARD G. SWEET

Systems Techniques Laboratory, Stanford Electronics Laboratories, Stanford University, Stanford, California

(Received 28 September 1964)

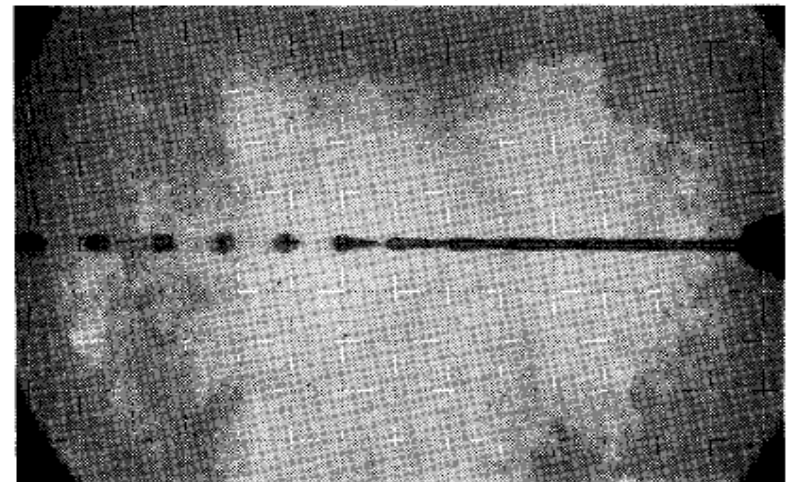
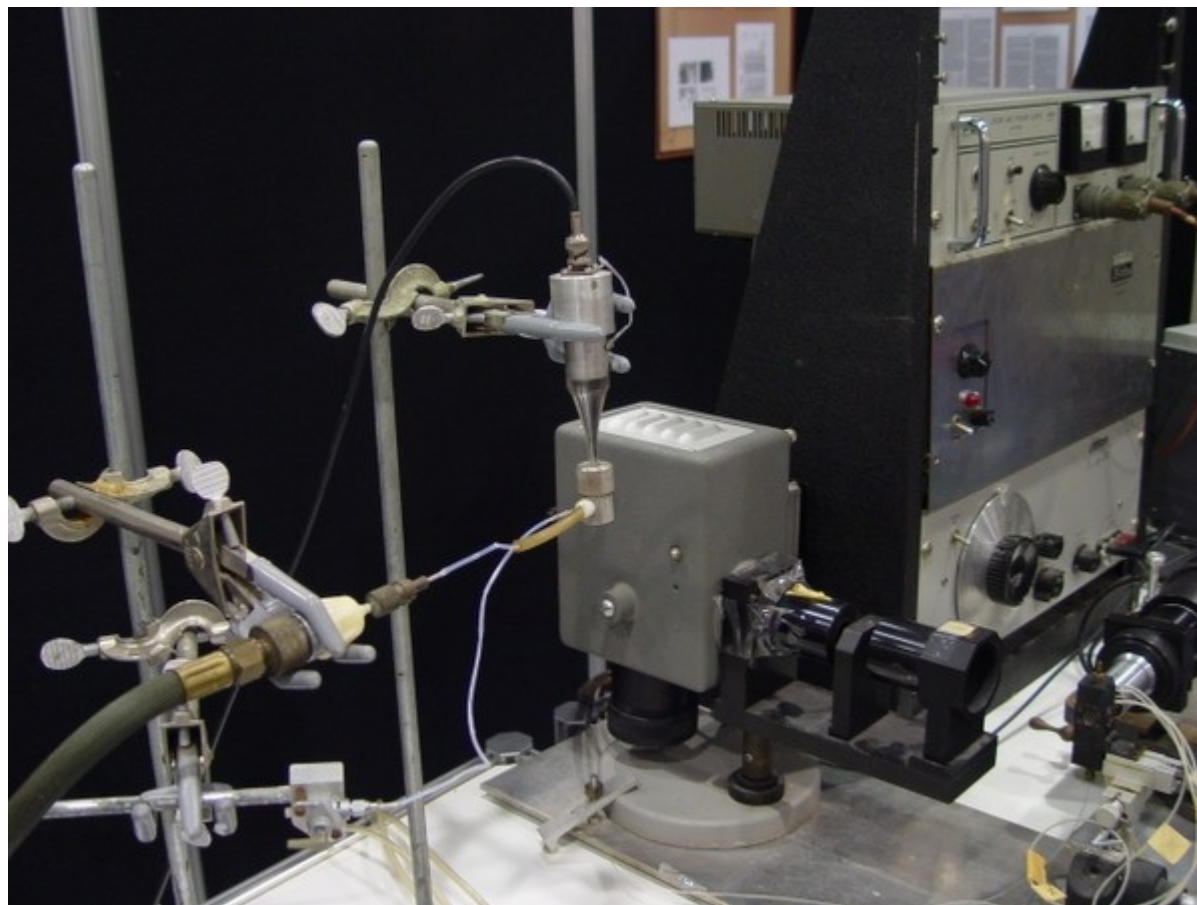
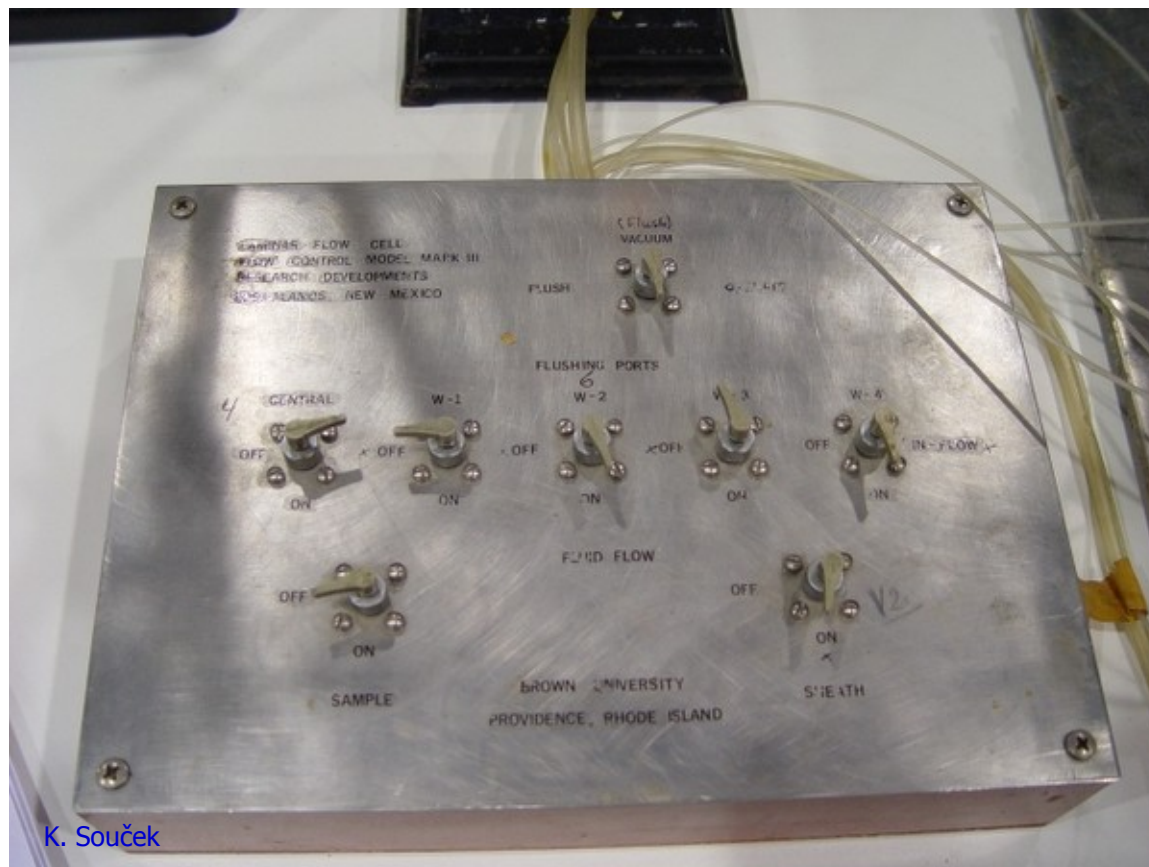


FIG. 3. Ink-drop formation.

Mack Fulwyler- sorter



Mack Fulwyler- sorter



K. Souček

Mack Fulwyler in His Own Words

J. Paul Robinson

Purdue University Cytometry Laboratories, Bindley Biosciences Center, Purdue University, West Lafayette, Indiana

Received 12 July 2005; Revision 15 July 2005; Accepted 15 July 2005

MACK FULWYLER IN HIS OWN WORDS

65

FIG. 1. The Fulwyler instrument as installed in Dr. Boris Rotman's Laboratory in Brown University, immediately prior to disassembly in March 2005. The instrument had not been altered or moved since installation in 1967, except for the addition of a laser instead of the UV lamp.



April 30, 1968

M. J. FULWYLER

3,380,584

PARTICLE SEPARATOR

Filed June 4, 1965

5 Sheets-Sheet 1

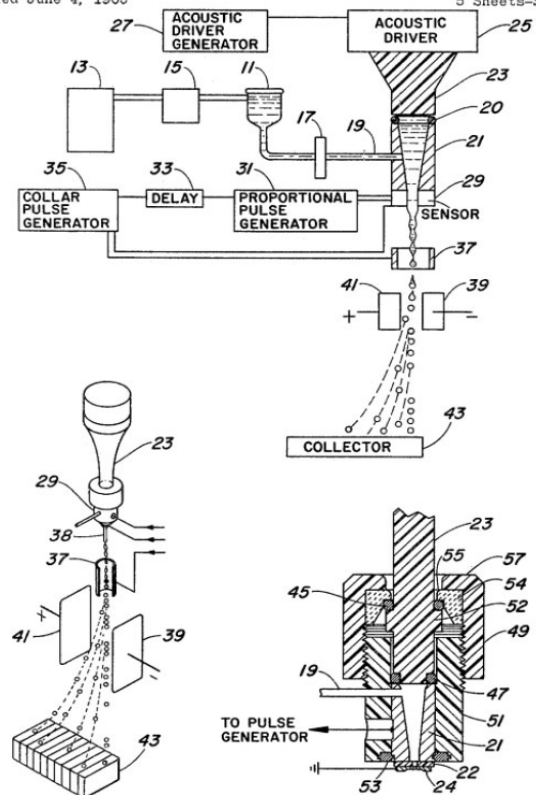
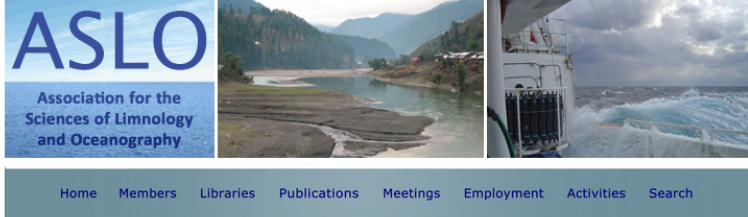


FIG. 4. A page from Fulwyler's patent on the cell separation technology patent #3,380,584 showing the fundamental components of the invention of the cell sorter.

INVENTOR.
Mack J. Fulwyler
BY
Richard A. Robinson
Attorney

K čemu to všechno je... například...



Position Announcements

Flow Cytometer Research Technician

Flow Cytometer - Research Technician

The Ocean Biogeochemistry Laboratory at Bigelow Laboratory of Ocean Sciences is seeking an energetic and motivated technician to join our research group. The primary responsibility of the successful candidate will be operation of our high-speed flow cytometer/ cell sorter in support of our oceanographic research. This technical position requires extensive knowledge of cytometric principles, an ability to troubleshoot and maintain analytical instrumentation, prior experience in method development, a willingness and capability of going to sea to operate the flow cytometer (cruises from 1 to several weeks), and a high degree of self-confidence and independence. A wide diversity of sample types are analyzed ranging from enumerating and sorting single cells from oceanic samples to quantification of cellular rate processes employing fluorogenic assays to combining isotopic methods with flow sorting.

The successful applicant must have at least a B.Sc. degree and 2+ years of demonstrated experience with flow cytometric cell sorters as a primary operator. The successful applicant must also be highly organized, have a strong ability to multi-task, be self-confident and independent. This position will initially be for one year with continuation for additional years based upon successful job performance.

Send CV, cover letter, and contact information for 3 references to jobs@bigelow.org. Please reference (RT-2012-4) in the subject line. Review of applicants will begin immediately and continue as applications are received until the position is filled. The preferred starting date is no later than 1 January 2013, but this may be negotiated. Salary will be commensurate with prior experience. Bigelow Laboratory is an Equal Opportunity Employer.

Submission Forms

[Submit Job Announcements](#)

[Submit Student Opportunities](#)

Employment and Student Opportunities

[Positions Offered](#)

[Student Opportunities](#)

[Job-Related Links](#)

Career Information

[Aquatic Science Careers](#)

[Careers in Public Policy](#)

[Early Career Scientists](#)

Programs and Opportunities

[Programs for Recent PhDs](#)

Position Available

FLOW CYTOMETRY TECHNICIAN

Oceanography, MIT

The Chisholm Laboratory at MIT (<http://web.mit.edu/chisholm/www/>) is seeking a full-time flow cytometry technician to participate in research involving oceanic cyanobacteria. The position requires a Bachelors degree in science or engineering and two years experience. Applicants must have a solid background in and experience with flow cytometry, including extensive knowledge of hardware, data analysis, and experimentation. Duties include maintenance of flow cytometry instruments, experimentation, and assisting other lab members with flow cytometry as needed. Must be able to work as a member of a multidisciplinary team. Quantitative methods. Field

Please send a resume and 3 letters of recommendation to Dr. Marcia Osburne (mosburne@mit.edu), or Dr. Marcia Osburne, MIT, 15 Vassar St. rm 48-336B, Cambridge, MA 02139

Moss Landing Marine Laboratories

Home About Us Academics Faculty Research Affiliates Marine Operations Public

ABOUT US

- About Us
- Contact Information
- Map & Directions

ANNOUNCEMENTS

- Employment Opportunities
- Events
- News
- Seminars

4/9/12 - Job Opportunity: Biological Oceanography Technician

Date: April 9, 2012 - 8:00am
Biological Oceanography - Job Opportunity

The Biological Oceanography Lab is seeking assistance (half-time or more) on Dr. Welschmeyer's ballast treatment testing project associated with the California Maritime Academy (CMA). The duties will include training/execution many routine chemical and biological oceanographic analyses (e.g., DOC/POC, chlorophyll a, live organism microscopy, epifluorescence microscopy, flow cytometry, bacteria culturing assays, etc.). The employee will travel often between MLML and CMA.

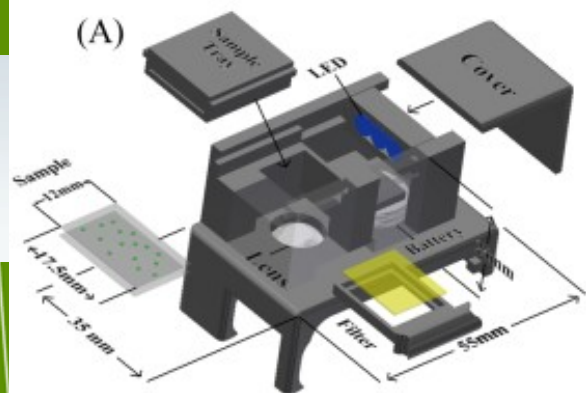
Requirements: the employee must be available for two consecutive 48 hour periods (or more) each week; full time work is ideal. (Student schedules with M-W or T-Th classes will not work). A willingness to work long hours (odd hours) is mandatory; excellent pipetting skills, notetaking, and spreadsheet skills would be appreciated (state drivers license is helpful). Pay is \$20/h immediately; work will proceed through summer with possible sampling trips to southern California and South America.

Please contact Dr. Nick Welschmeyer by email (Welschmeyer@mml.calstate.edu) for information.

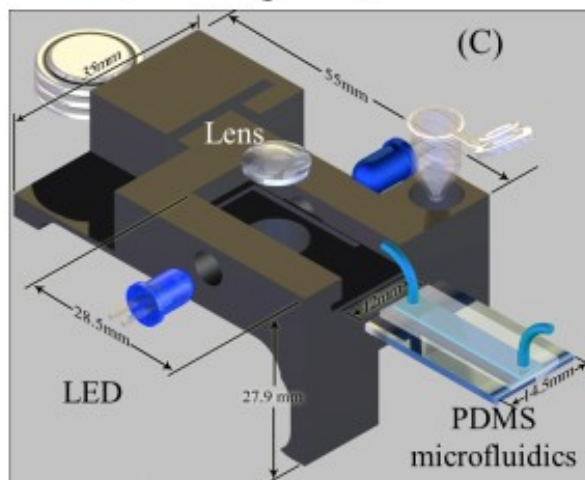


K čemu to všechno je... například...

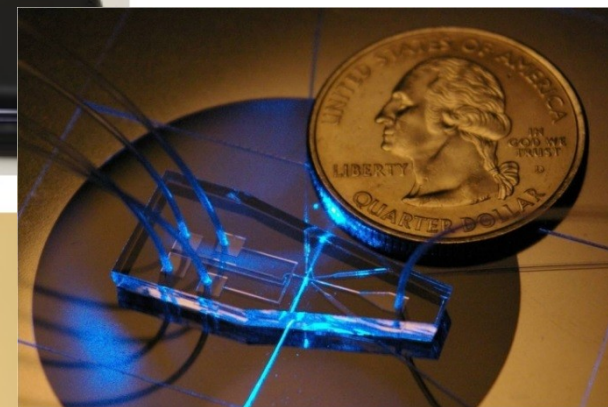
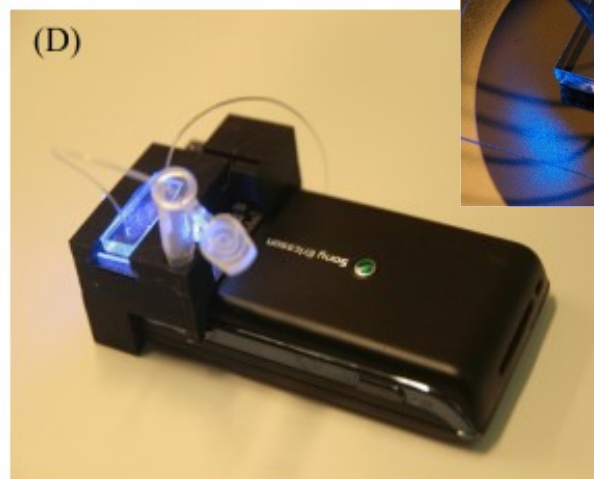
- 43 miliónů lidí na světě je infikováno virem HIV (WHO)
- ročně zemře ~ 2 miliónu lidí na HIV/AIDS (v Africe je ~ 11 miliónu AIDS sirotků)
- kvantifikace CD4 T lymfocytů je klíčový parametr při monitorování léčby
- Průtoková cytometrie je „zlatý standard“
- Optimalizované postupy a zařízení pro levné (< 3 EUR / vzorek) a rychlé detekce (250 vzorků / den)
- **Avdoğan Ozcan**: „Kill the cost. save live“



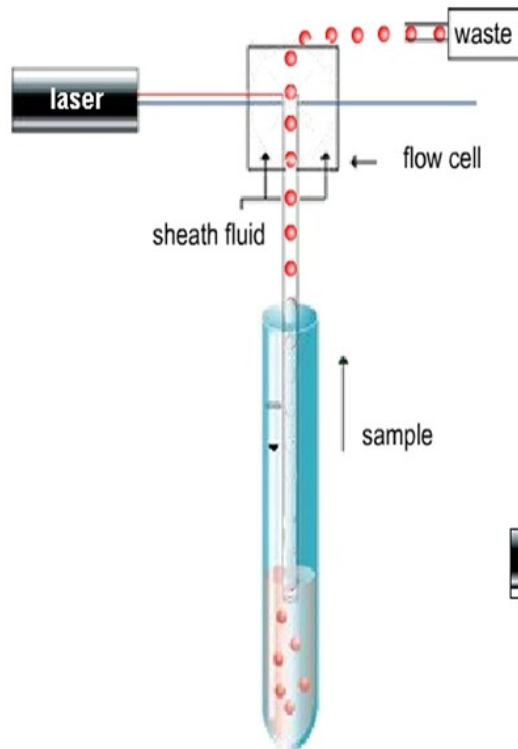
(B)



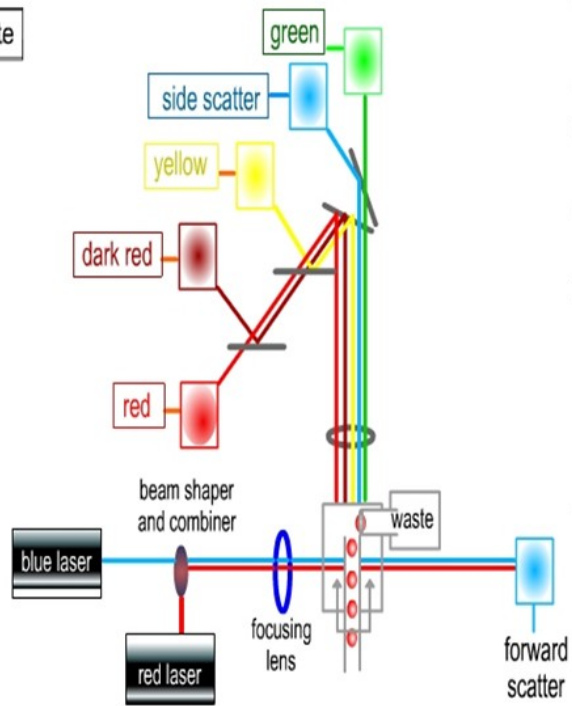
(D)



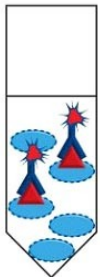
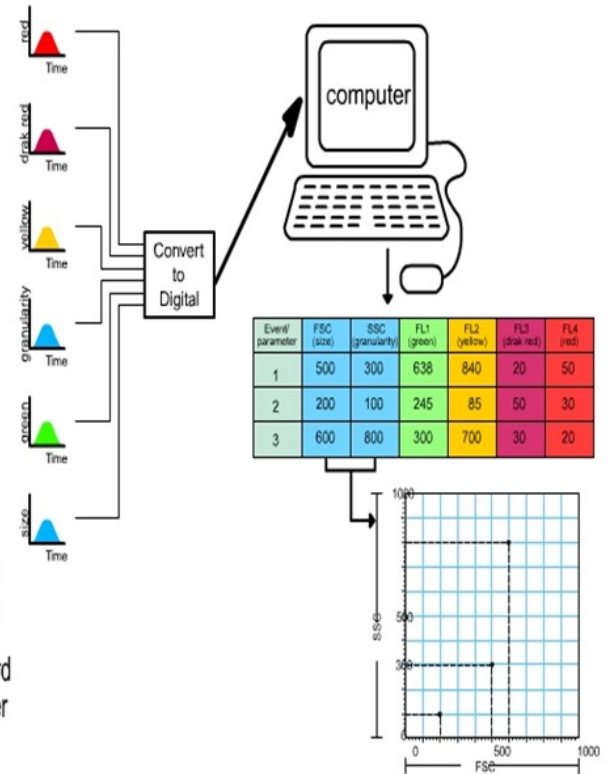
fluidics



optics



electronics



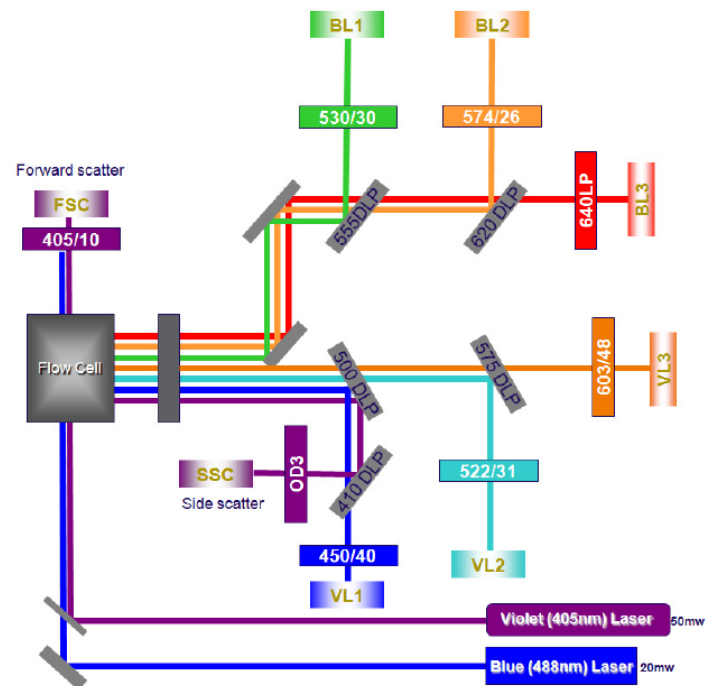
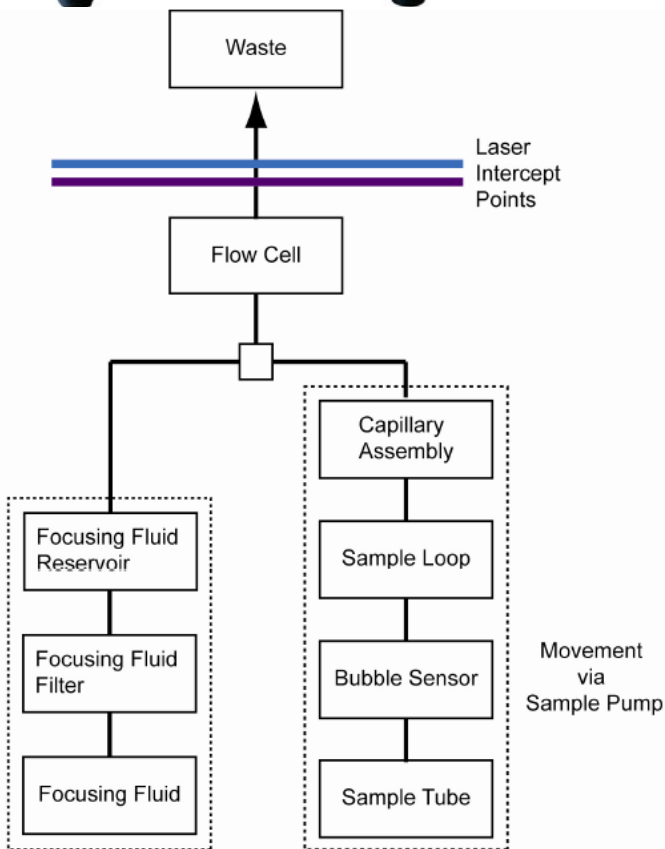
Key

- Cell
- Antigen
- Fluorochrome conjugated Primary antibody

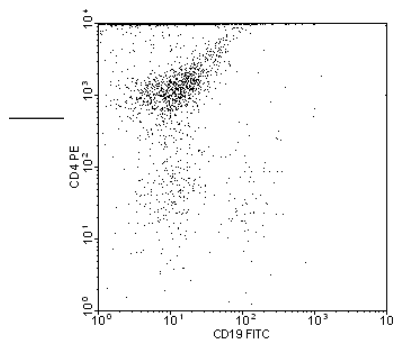
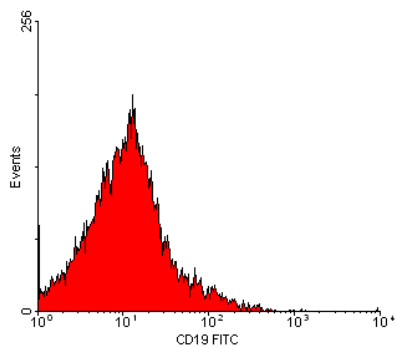
Fluidika - Laminární vs. turbulentní proudění

- **Turbulentní** proudění je charakteristické chaotickými (stochastickými) změnami
- **Laminární** proudění – kapalina proudí v paralelních vrstvách které se vzájemně nemísí

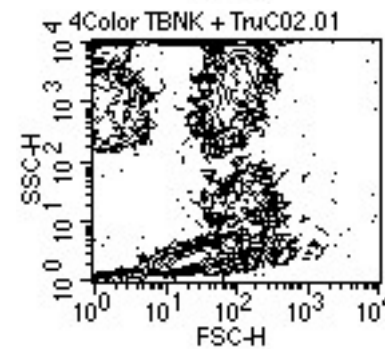
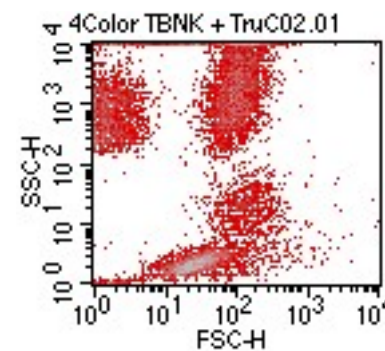
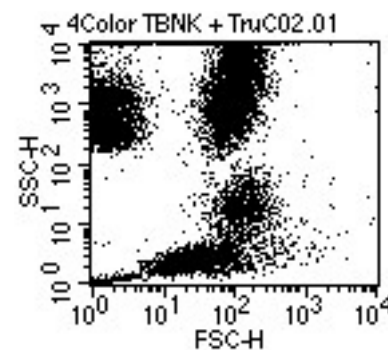
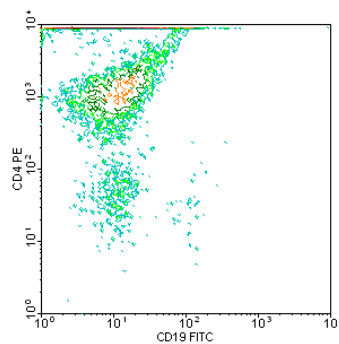
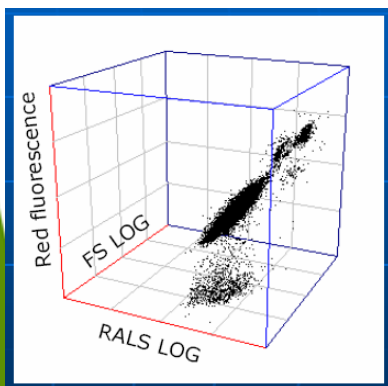




Způsoby pro zobrazení dat

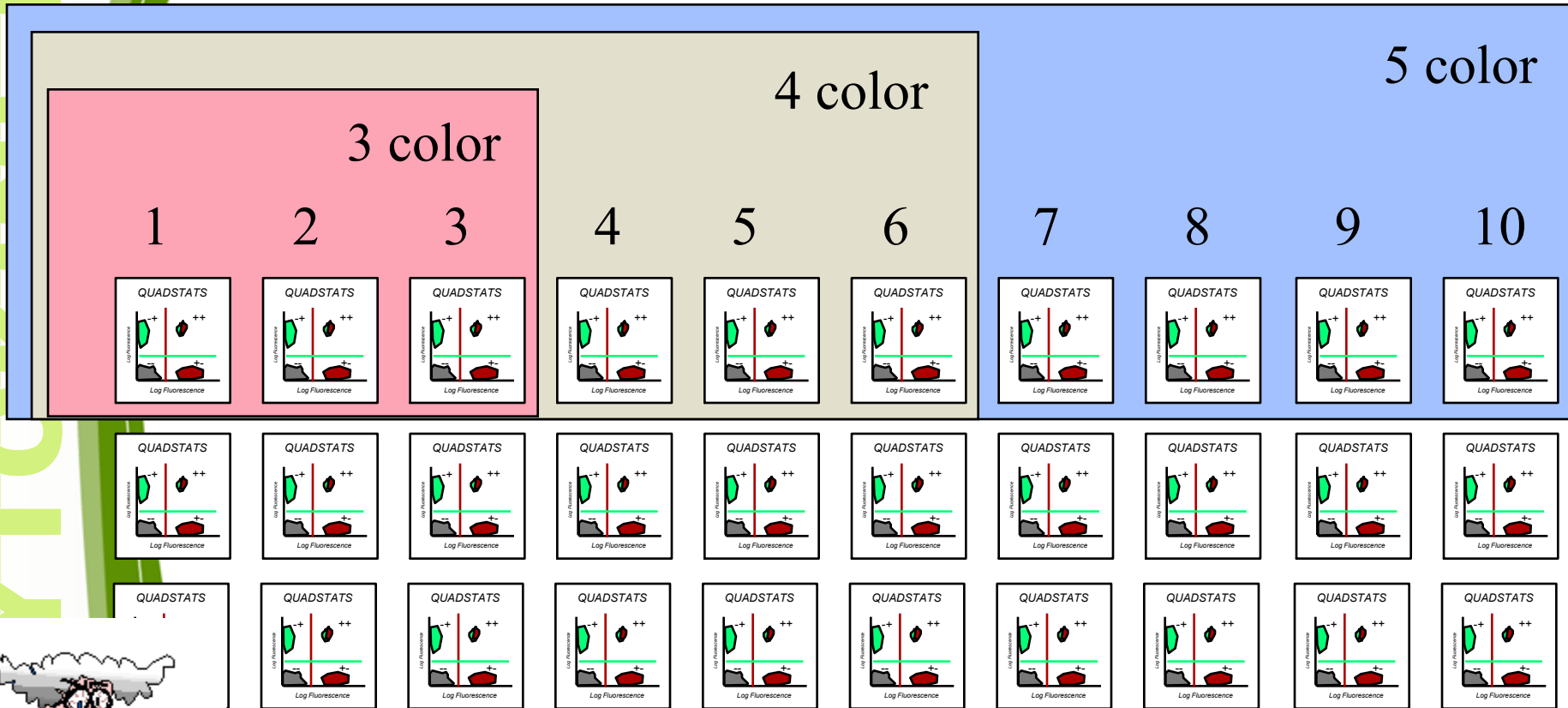


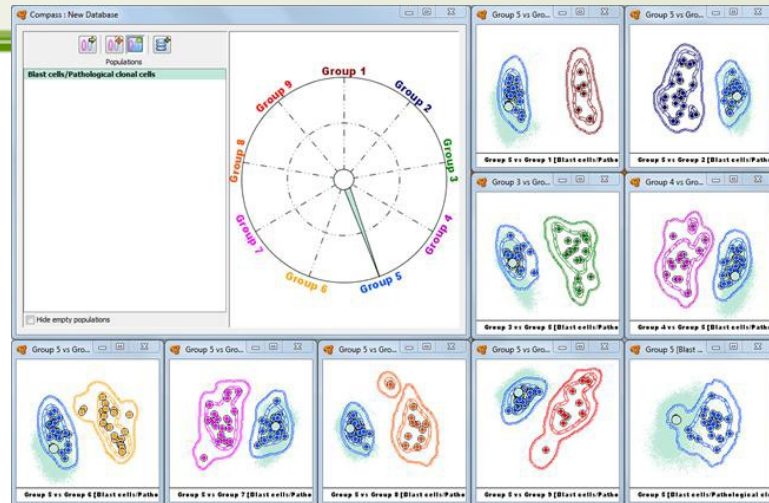
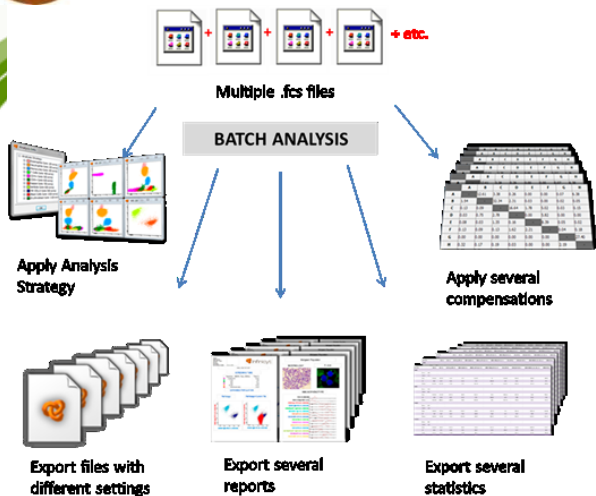
4Color TBNK + TruCO2.01



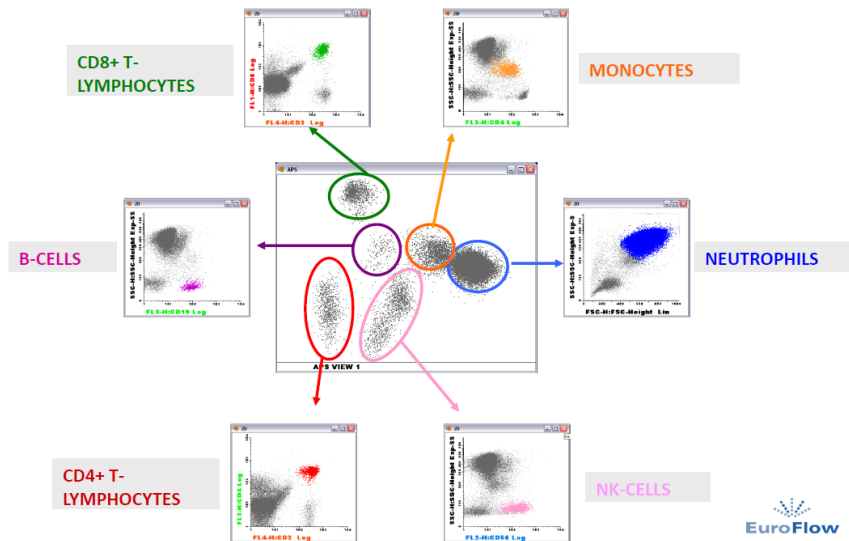
Vícebarevné analýzy generují mnoho dat...

STATISTIKA





Automatic Population Separator



Cell tracking and proliferation

CYTOKINETIKA

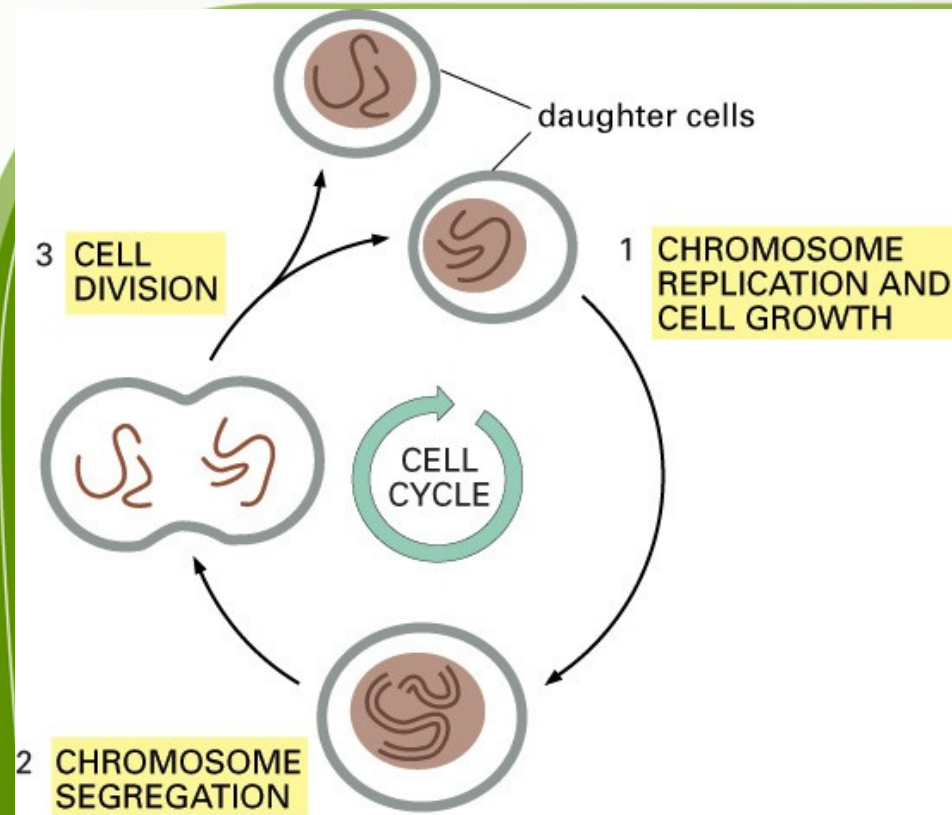
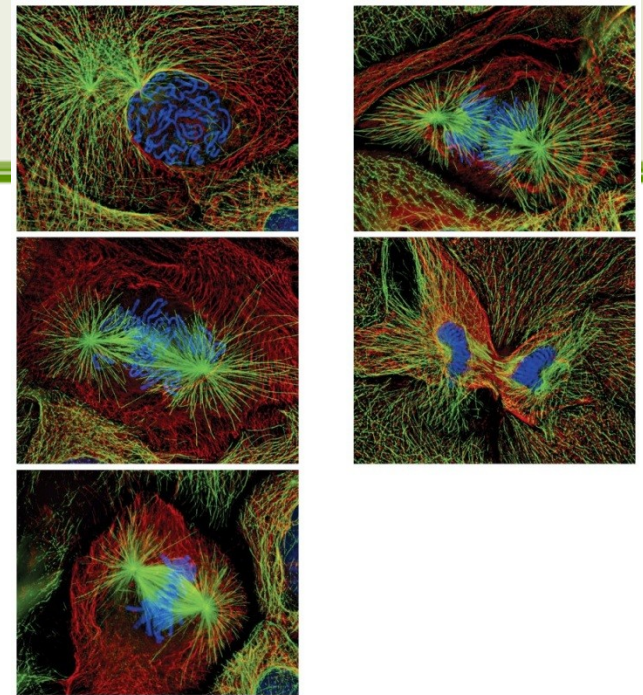
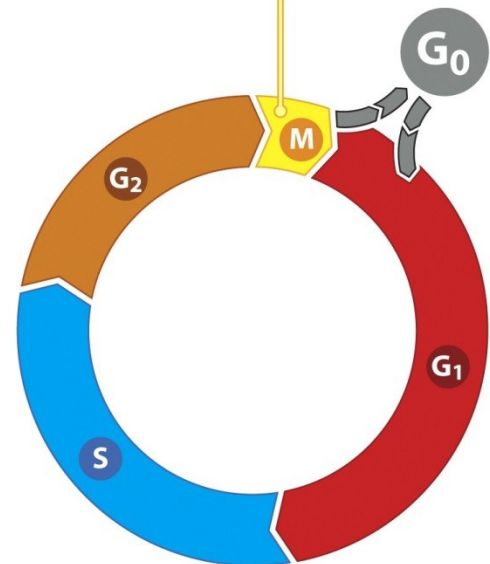


Figure 17-1. Molecular Biology of the Cell, 4th Edition.



prophase, metaphase, anaphase, telophase



Approaches

- Cell cycle analysis
- DNA synthesis analysis
- Cell tracking

Buněčný cyklus

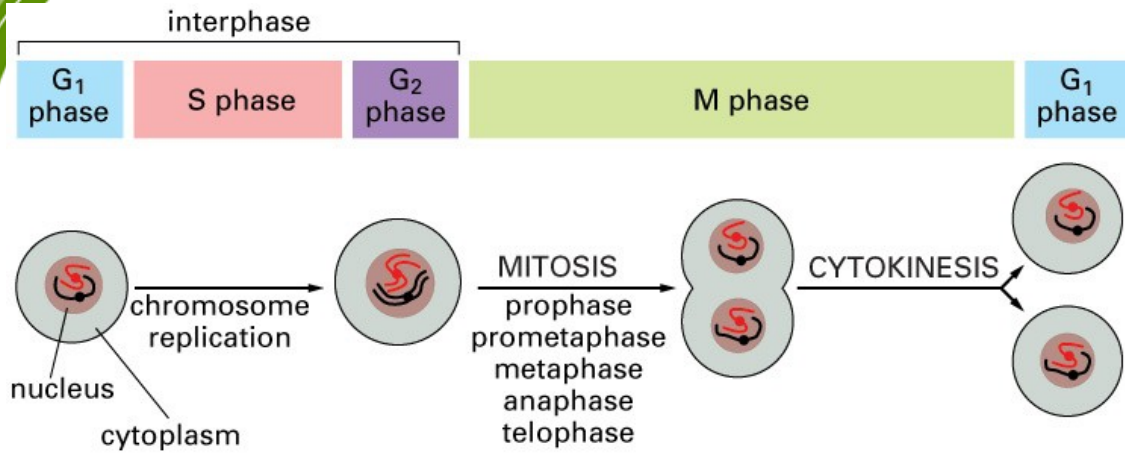


Figure 18-1. Molecular Biology of the Cell, 4th Edition.

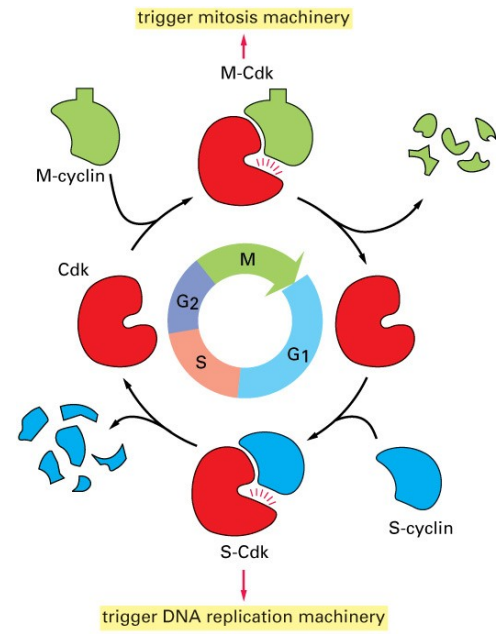
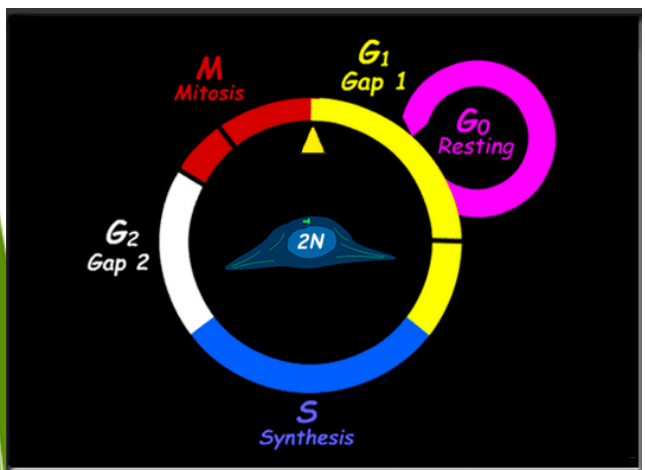


Figure 17-16. Molecular Biology of the Cell, 4th Edition.

oocyte grows without dividing (months)

FERTILIZATION

fertilized egg divides without growing (hours)

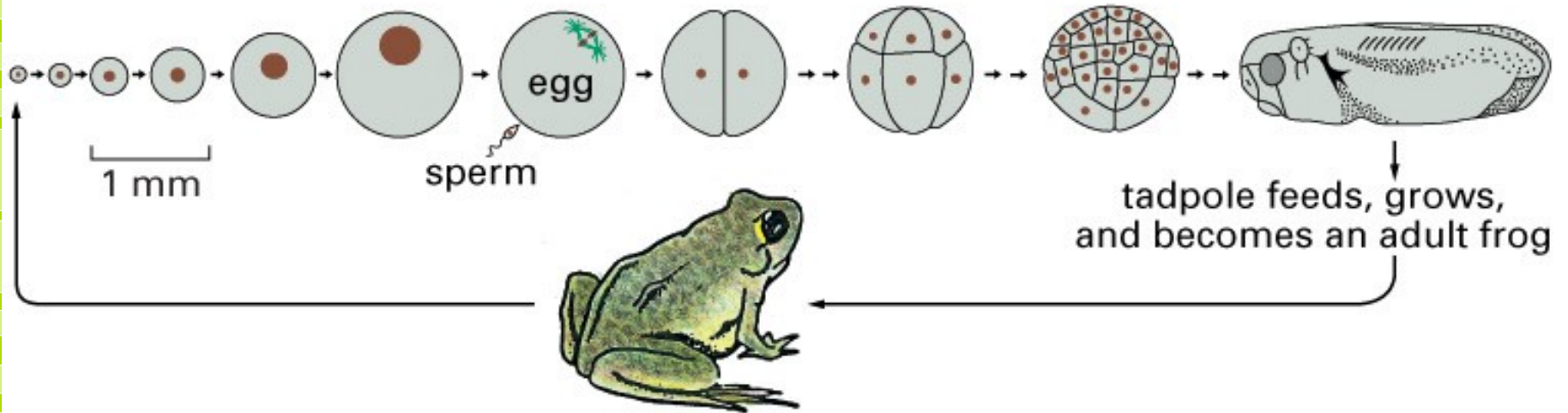
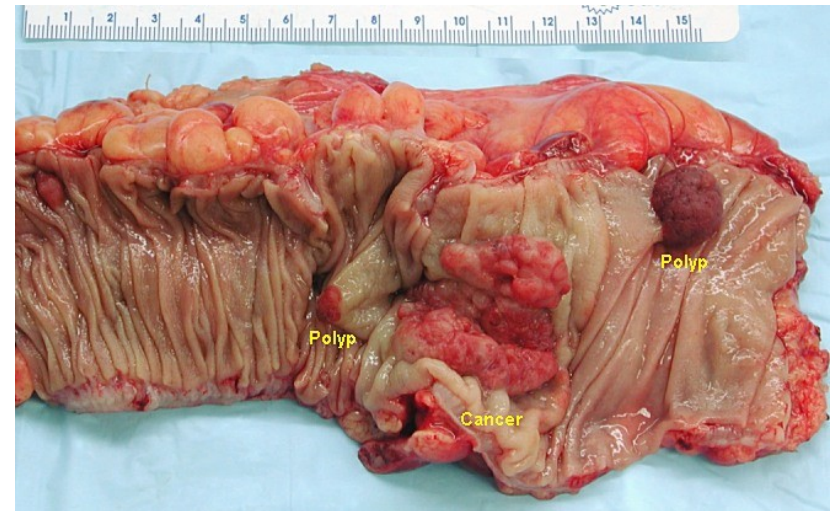


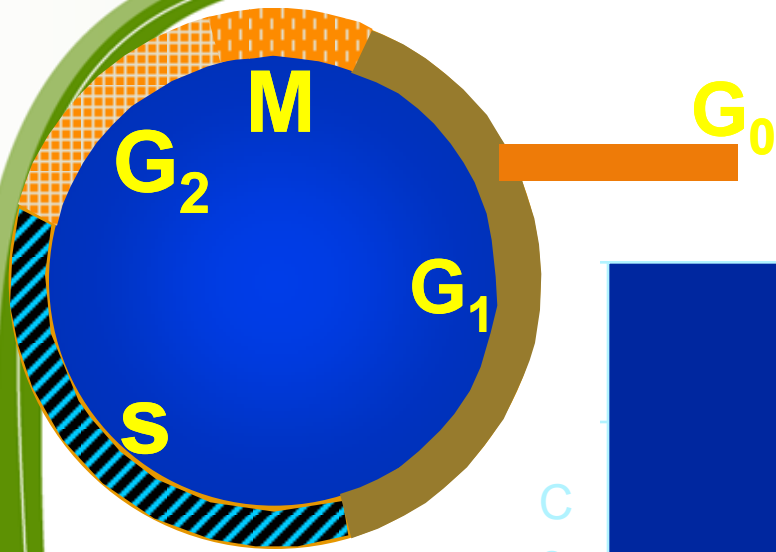
Figure 17-8. Molecular Biology of the Cell, 4th Edition.



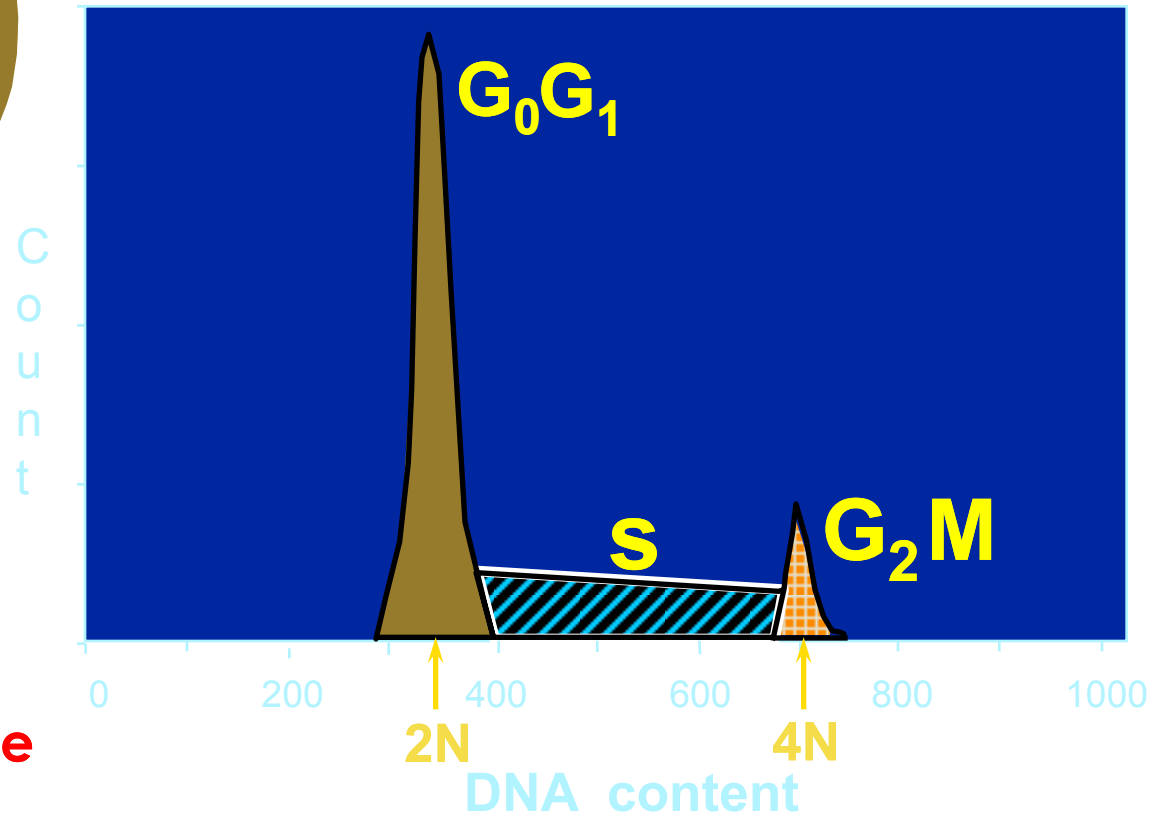
Cell cycle analysis

- One of the oldest applications of flow cytometry, analysis of the cells in cell cycle phases based on the quantification of DNA
- flow cytometry is a convenient method for quick and relatively precise determination of cell cycle
- DNA is simply labeled using fluorescent dyes specific for DNA
 - Propidium iodide
 - 4',6-diamidino-2-phenylindole (DAPI)
 - fluorescence increases after binding to DNA. Membranes have to be permeabilized.
 - Hoechst 33342
 - Vybrant® DyeCycle™
 - DRAQ5
 - Quaternary benzo[c]phenanthridine alkaloids (QBAs)
 - I. Slaninová, J. Slanina and E. Taborská, "Quaternary benzo[c]phenanthridine alkaloids--novel cell permeant and red fluorescing DNA probes," *Cytometry A*, vol. 71, no. 9, pp. 700-708, 2007.
 - labeling of live cells (possible cytotoxicity)

Normal Cell Cycle



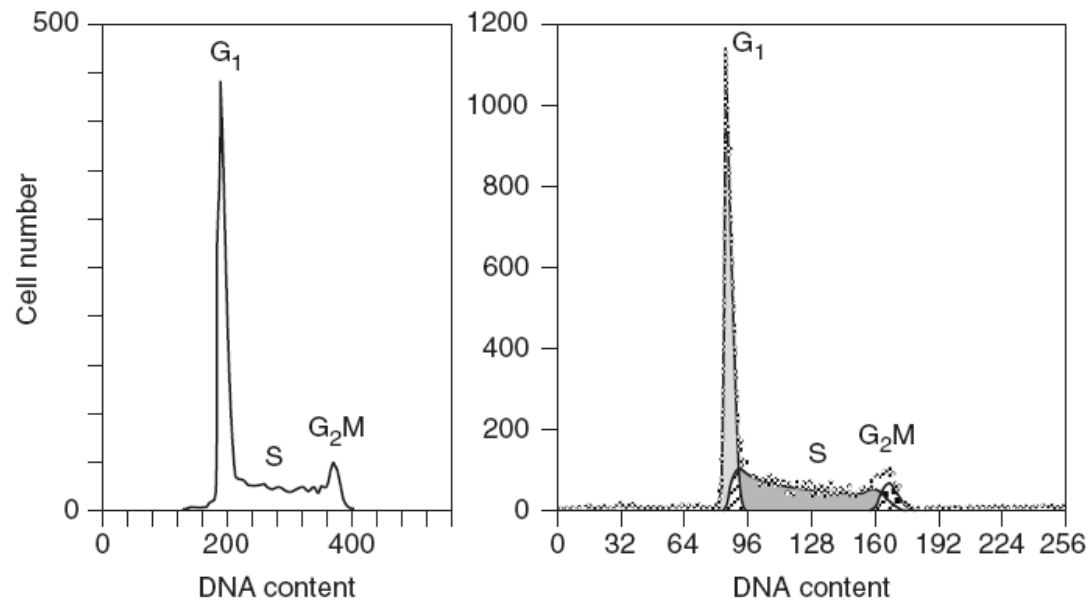
DNA Analysis



- propidium iodide
- DAPI
- Hoechst 33342
- 7-AAD

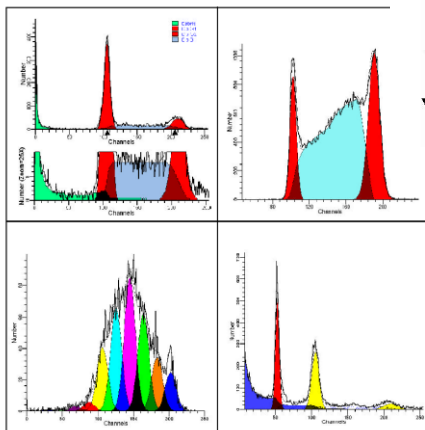
Cell cycle histogram: how to analyze?

- **It is not recommended** to statistically analyze it using simple gating in the histogram
- **It is necessary** to use software tools for modeling of distribution of cell cycle phases



ModFit LT™

An impressive new version of the industry standard.

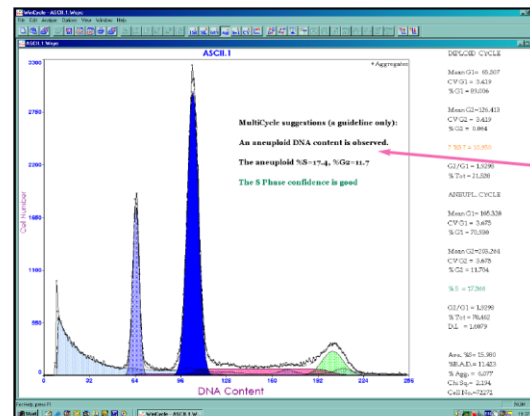


PHOENIX FLOW SYSTEMS

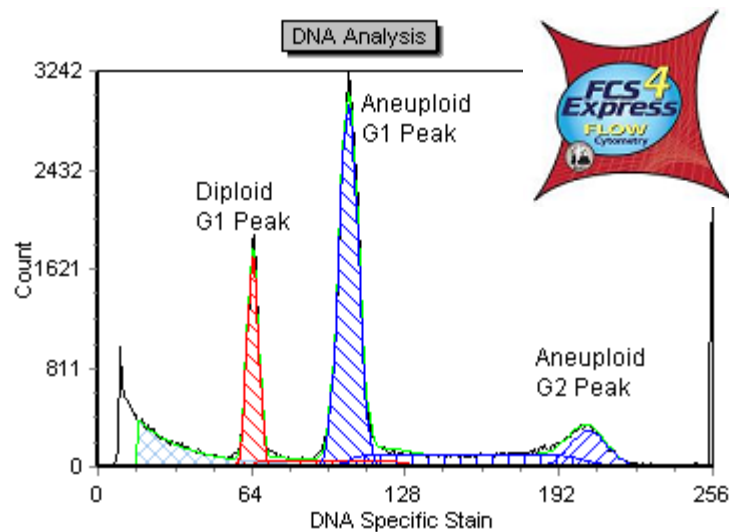
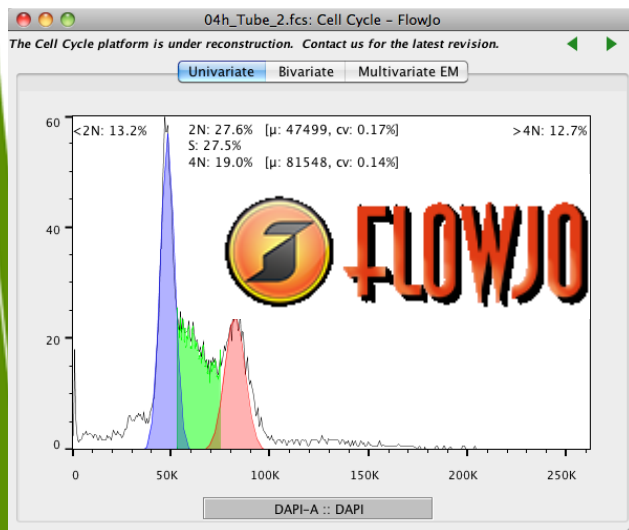
MultiCycle for Windows

Advanced DNA Cell Cycle Analysis Program

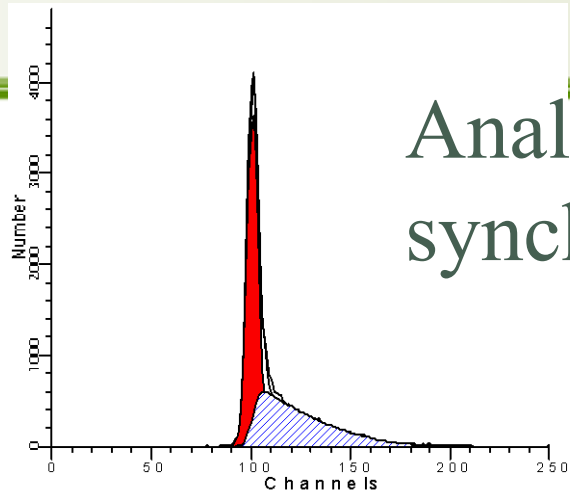
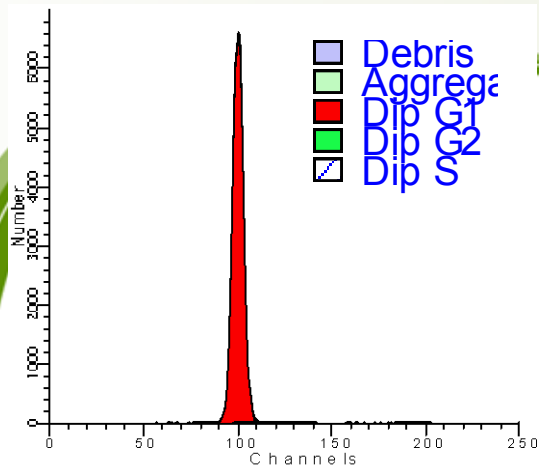
MultiCycle AV fits 6 different cell cycle models automatically. The variability in results is one aid to assessing confidence in S and G2 phase estimates. Display of statistics is optional.



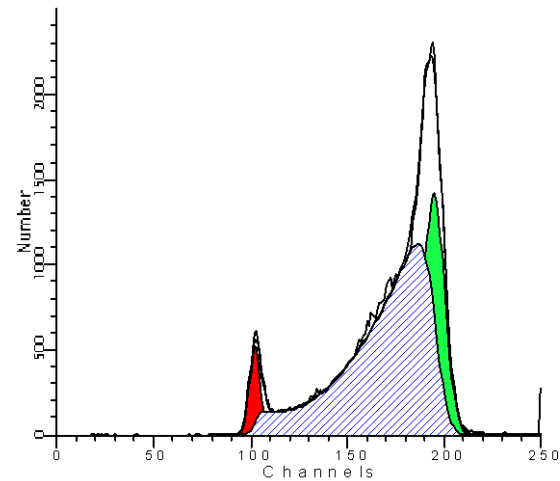
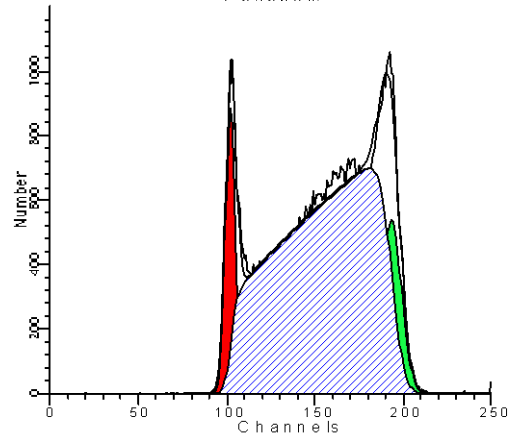
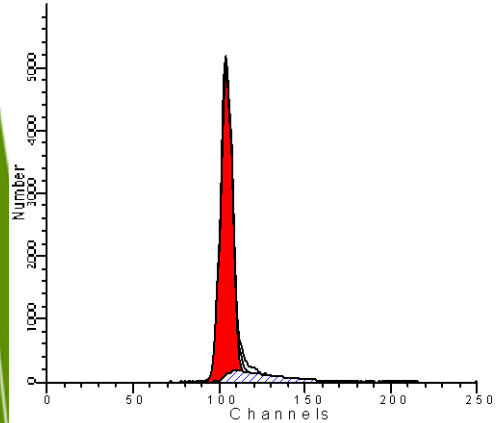
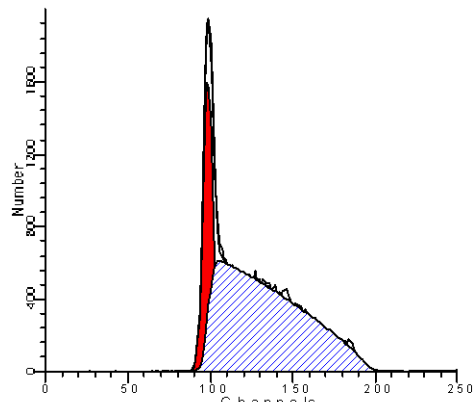
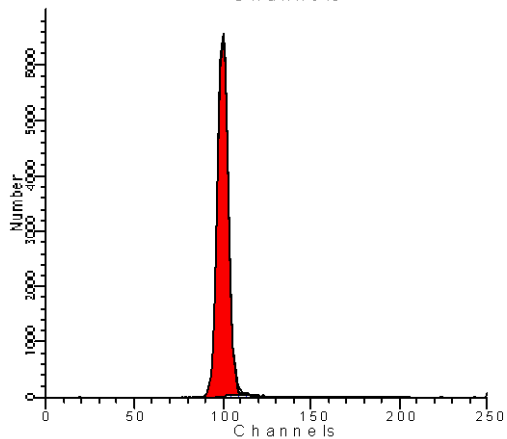
A summary interpretation clearly states results. A built-in decision tree helps take the guesswork out of evaluating the quality of the cell cycle analysis.



CYTOKINETIKA



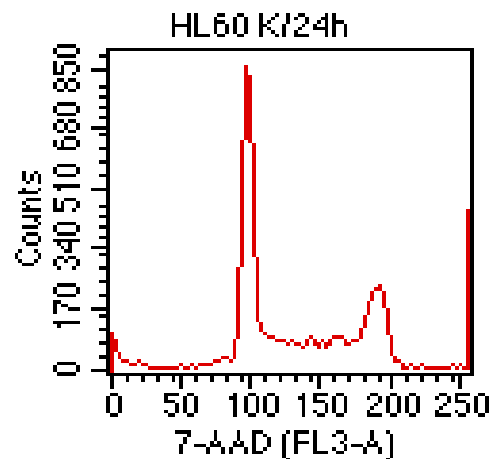
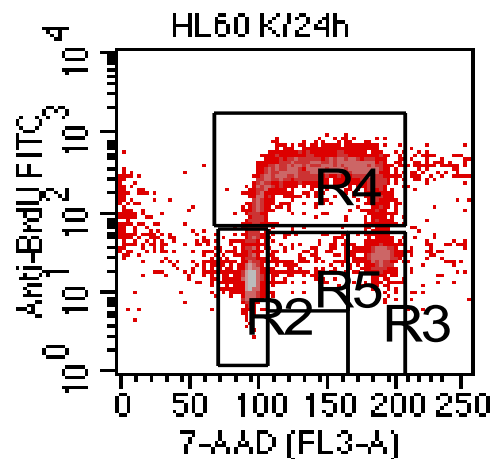
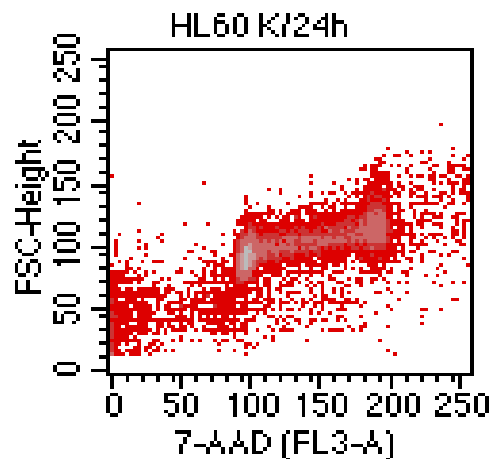
Analysis of synchronized cells



Analysis of BrdU incorporation

- Bromodeoxyuridin (BrdU) is incorporated into DNA instead of thymidine during S-phase
- BrdU is detected using specific antibody after the fixation and partial denaturation of DNA (acid, DNase)
- DNA can be stained in the last step

Analysis of BrdU incorporation



File: HL60 K/24

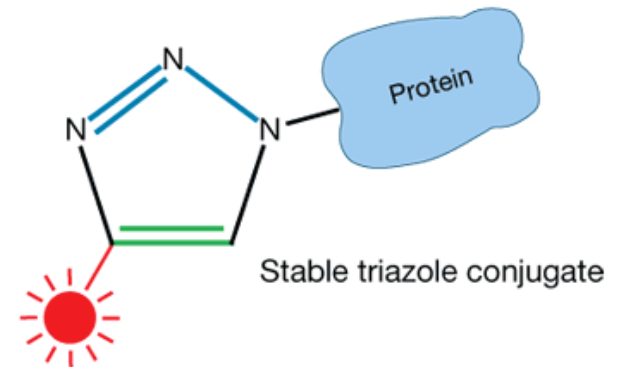
Regi	% Ga
R1	100.1
R2	35.4
R3	10.2
R4	47.8
R5	1.3

Click azide/alkyne reaction

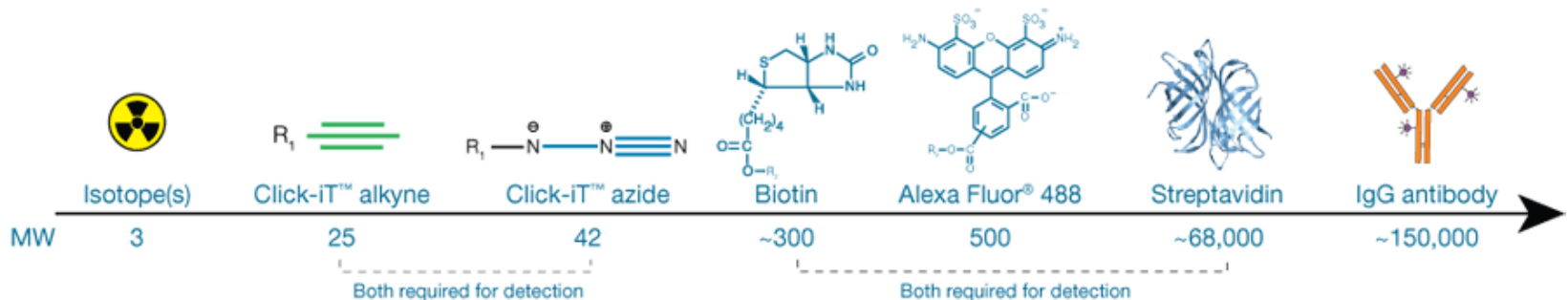


Metabolically or enzymatically
azide-modified protein

Cu(I), 1 hour
Room temperature

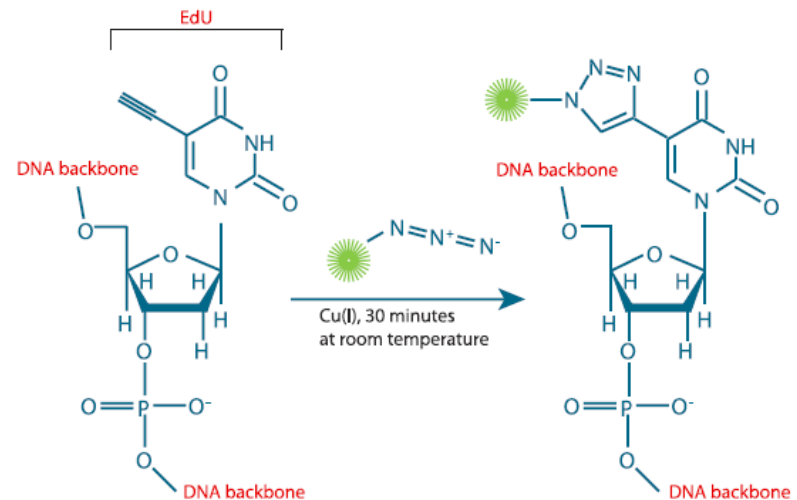


TAMRA, Dapoxyl®, or biotin alkyne



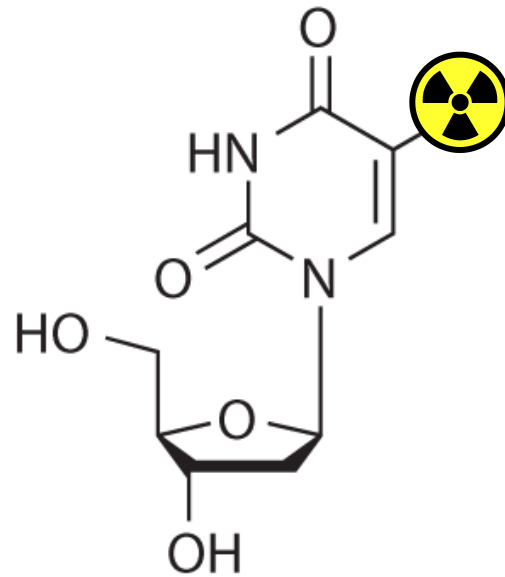
Click-IT (Invitrogen) applications

analysis of DNA synthesis (EdU - 5-Ethynyl-2'-deoxyuridine)



 Fluorescent dye or hapten

^3H -thymidine



Tritiated (^3H) thymidine

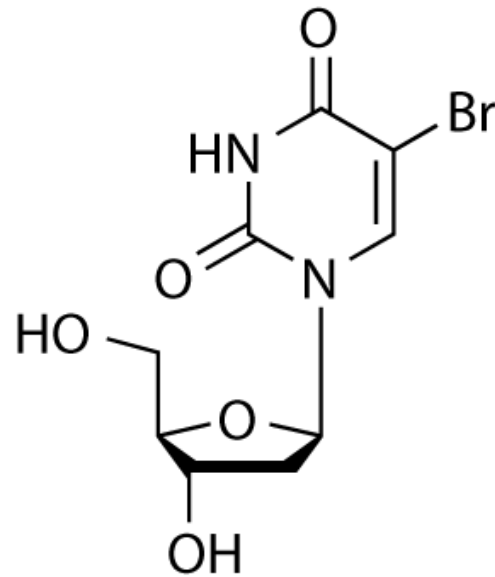


^3H -thymidine

- Original method for measuring cell proliferation
- Radioactive
- Not compatible for multiplexed analyses



BrdU

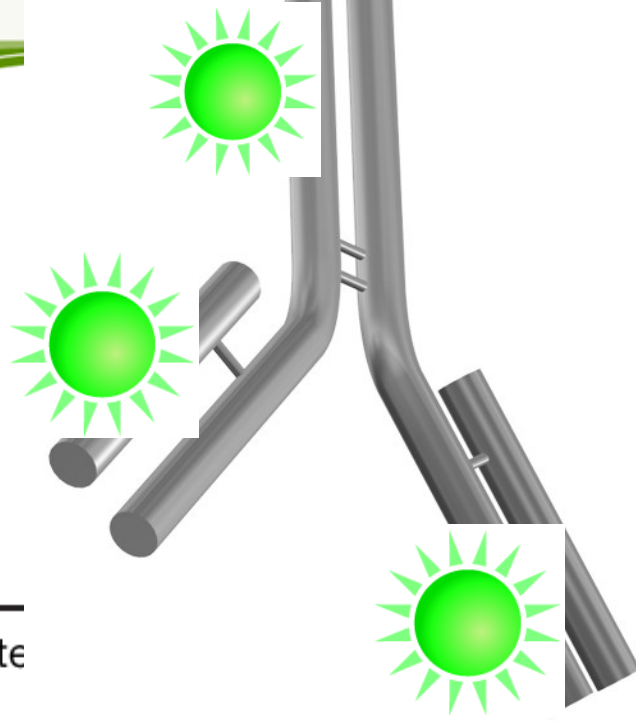


BrdU (5-bromo-2'-deoxyuridine)

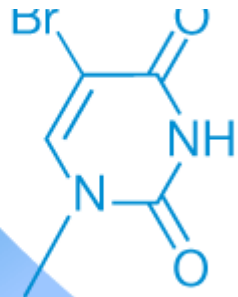


CYTOKINETIKA

BrdU



Incorporate



CYTOKINETIKA

BrdU

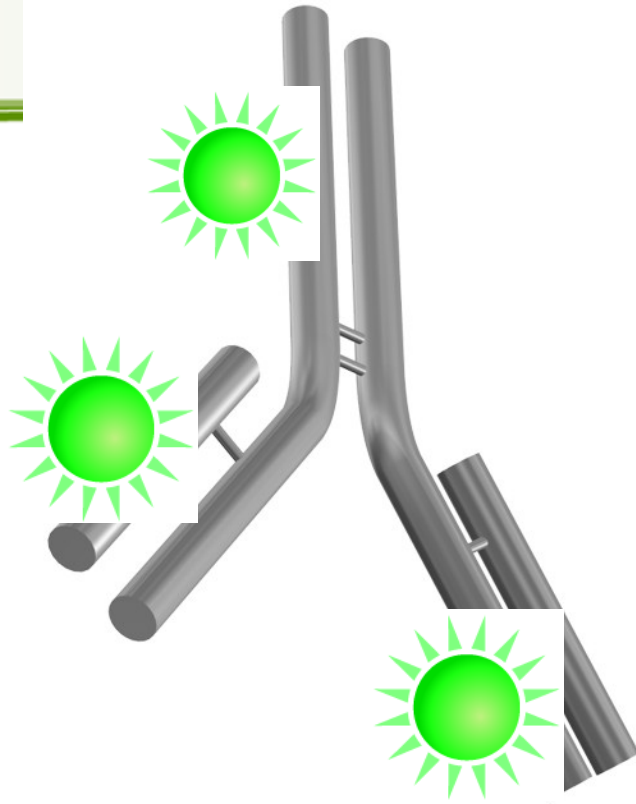


Acid or DNase

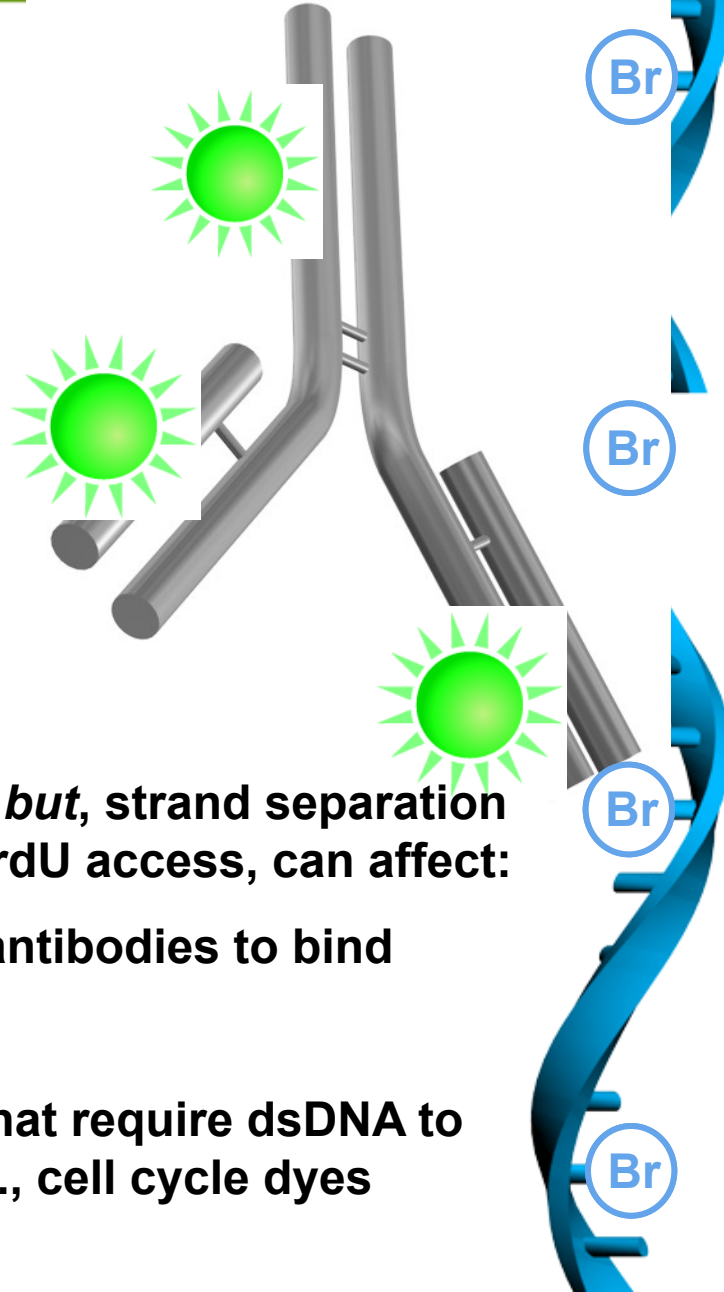


CYTOKINETIKA

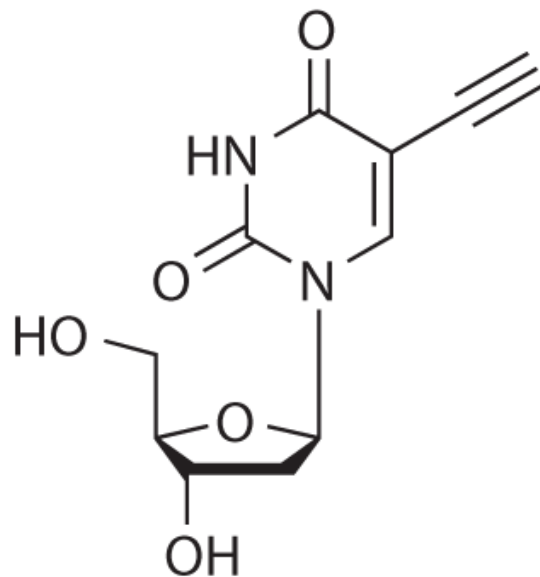
BrdU



BrdU

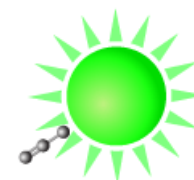
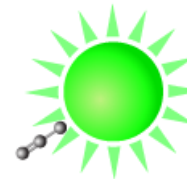
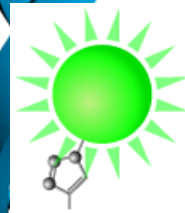
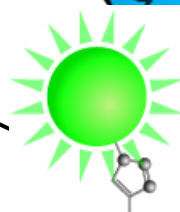
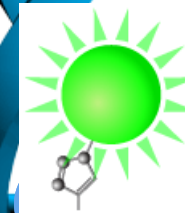
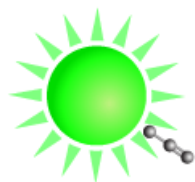
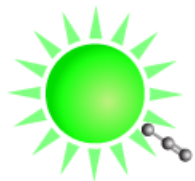
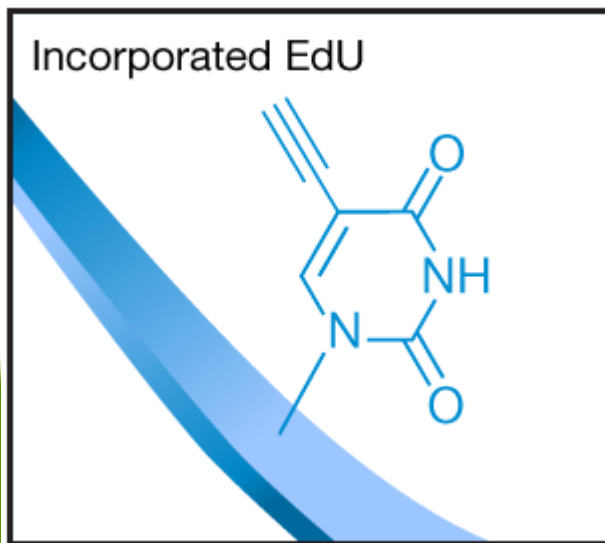


- Non-radioactive
- Multiplex compatible *but*, strand separation requirement for anti-BrdU access, can affect:
 - Ability for other antibodies to bind
 - Morphology
 - Ability for dyes that require dsDNA to bind efficiently, i.e., cell cycle dyes

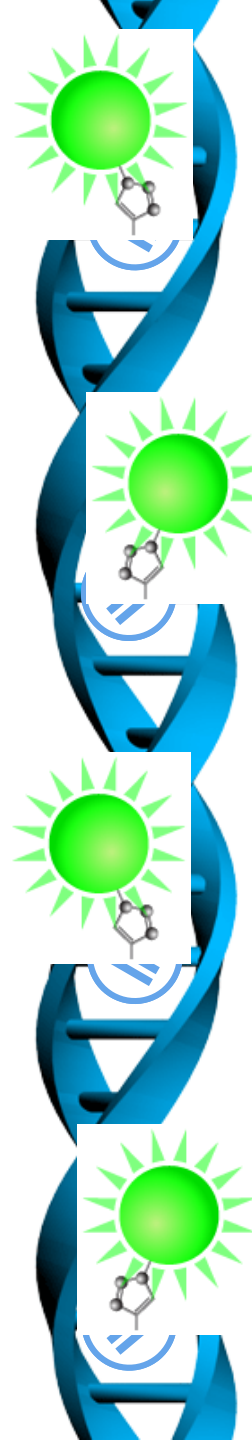


EdU (5-ethynyl-2'-deoxyuridine)



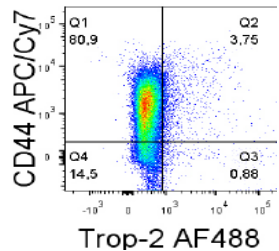


- **Non-radioactive**
- **No DNA denaturation required**
- **Simplified protocol**
- **Small molecule detection**
- **Multiplex compatible, including**
 - **Other antibodies**
 - **Dyes for cell cycle analysis**

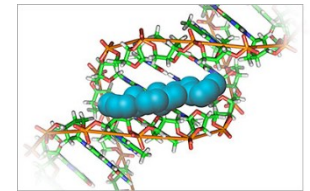


Flow cytometry most common application

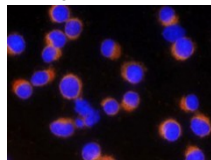
Immunophenotype characterisation of the cells
(CSCs markers, differentiation, ...)



Cell Cycle (DNA content, Cell cycle modulation after treatment)



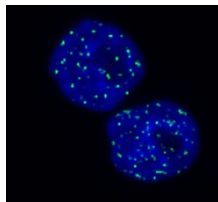
Cell Death analysis
(AnnexinV, Cleaved Caspase3, ...)



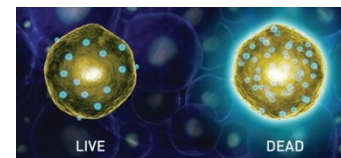
Proliferation (BrdU, EdU, mitosis - pH3)



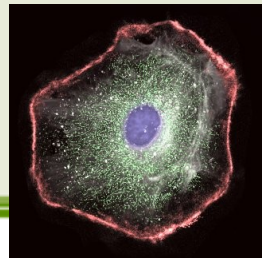
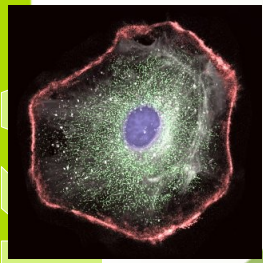
DNA damage (γ H2AX,...)



Viability assays (propidium iodid, CalceinAM, ...)



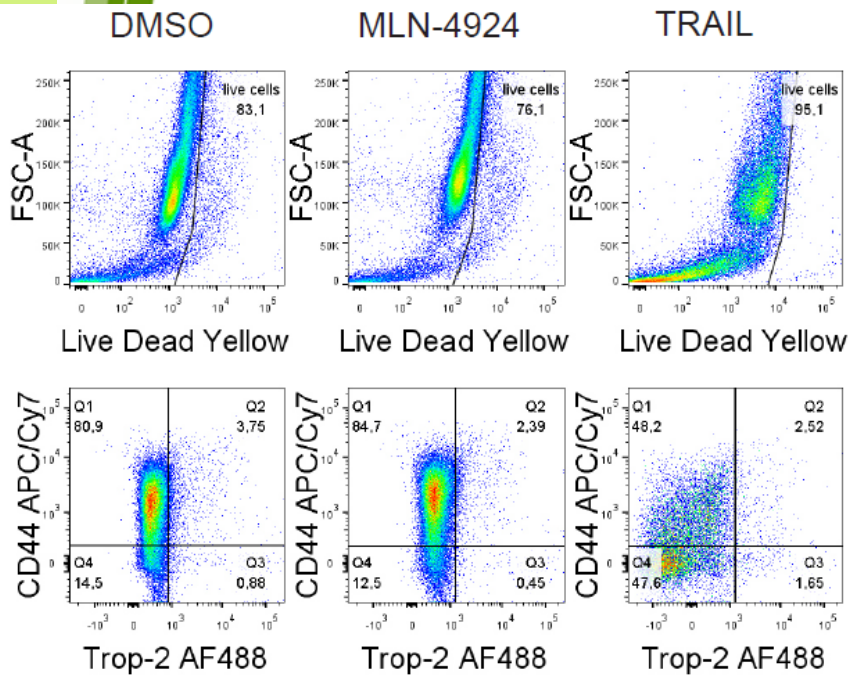
Example of final set-up



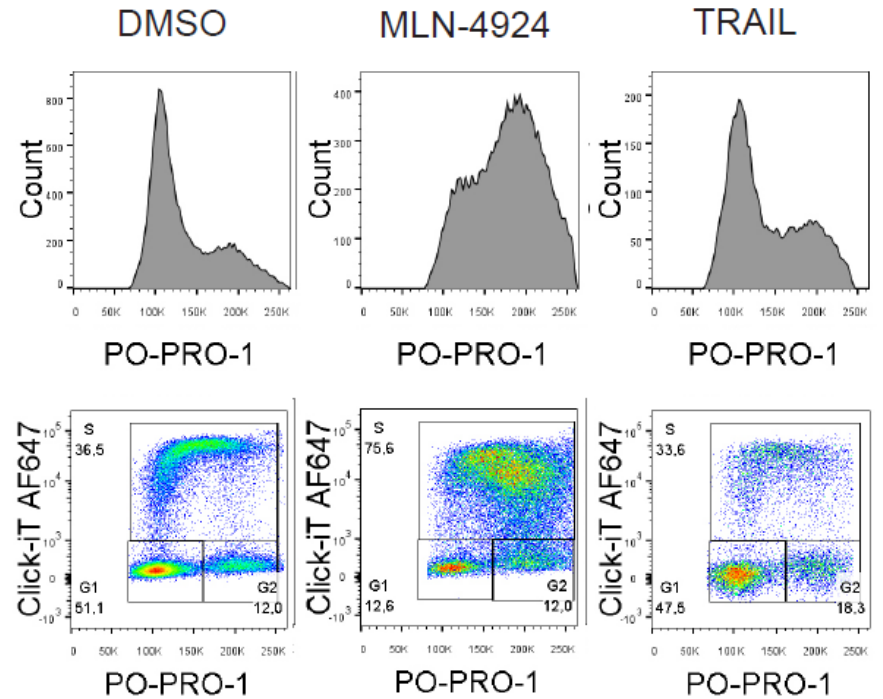
Parametr	Marker	Fluorochrome
Cell Surface Marker	CD44	APC/Cy7
Cell Surface Marker	Trop-2	AF488
Viability	LIVE/DEAD kit	Yellow
DNA synthesis	Click-iT EdU	AF647
Cell Cycle	DNA content	PO-PRO-1
DNA damage	γ H2AX	PE
Apoptosis	Cleaved Caspase 3	AF494

sample of final results (DU-145)

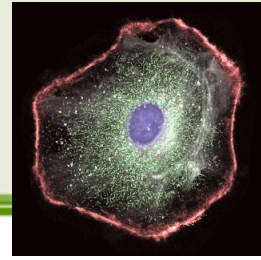
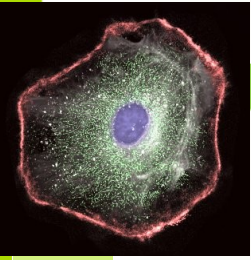
Viability and Immunophenotype



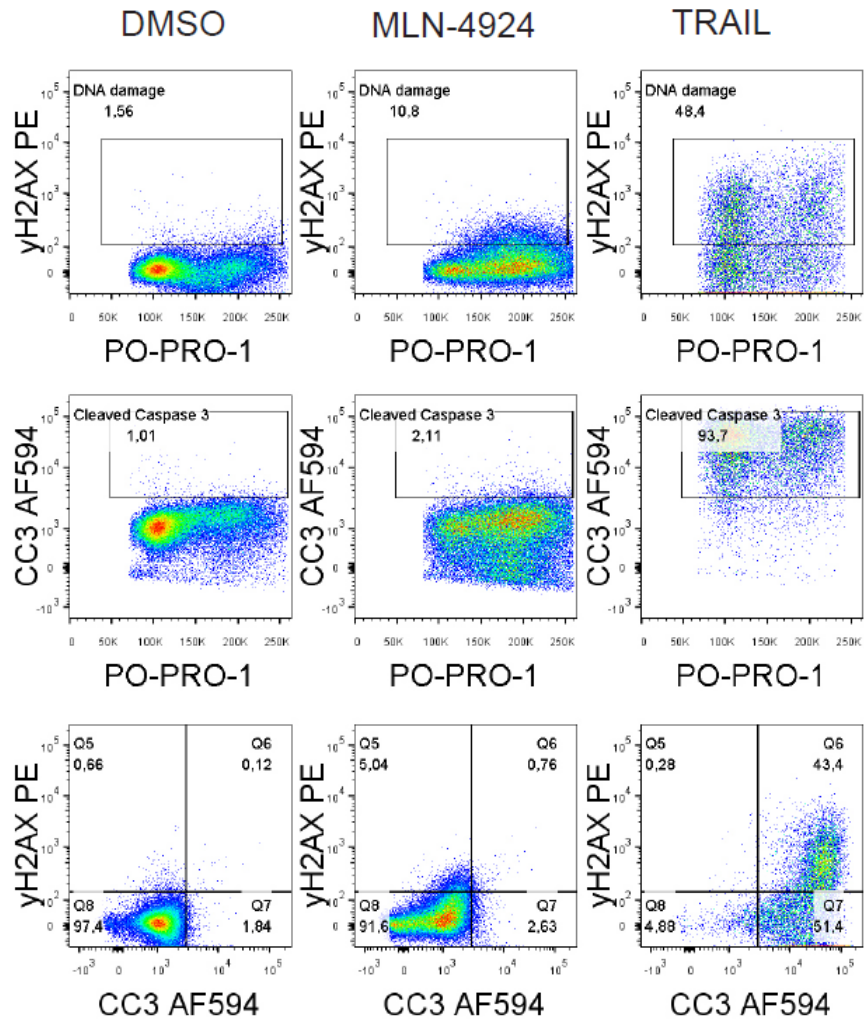
Cell cycle and Proliferation



Example of final results



DNA damage and Apoptosis



CYTOKINETE



The Nobel Prize in Chemistry 2008

► "for the discovery and development of the green fluorescent protein, GFP"

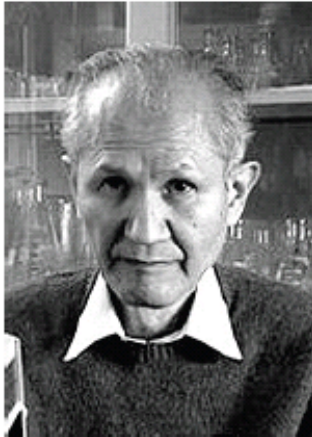


Photo: J.
Henriksson/SCANPIX

Osamu Shimomura

🕒 1/3 of the prize

USA

Marine Biological
Laboratory (MBL)
Woods Hole, MA, USA;
Boston University Medical
School
Massachusetts, MA, USA

b. 1928
(in Kyoto, Japan)



Photo: J.
Henriksson/SCANPIX

Martin Chalfie

🕒 1/3 of the prize

USA

Columbia University
New York, NY, USA

b. 1947



Photo: UCSD

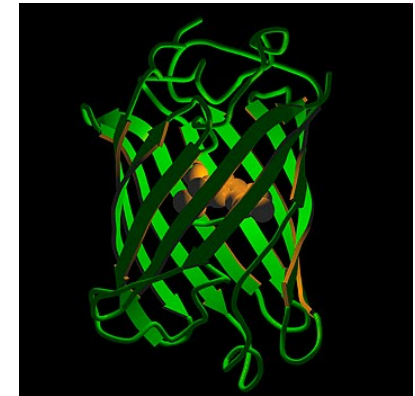
Roger Y. Tsien

🕒 1/3 of the prize

USA

University of California
San Diego, CA, USA;
Howard Hughes Medical
Institute

b. 1952



Fluorescent proteins

▶ bioluminescence resonance energy transfer (BRET)

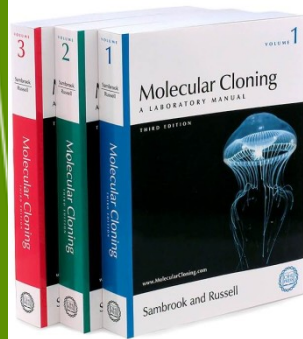
Aequorea victoria - jellyfish

- ▶ Blue bioluminescence. Ca^{2+} interacts with aequorin photoprotein.
- ▶ Blue light excites **green fluorescent protein**.

Renilla reniformis – coral

- ▶ luminescence appears after degradation of coelenterazine in the presence of luciferase enzyme.
- ▶ Blue light excites **green fluorescent protein**

Aequorea victoria “Crystal jelly”



Renilla reniformis "Sea Pansy"

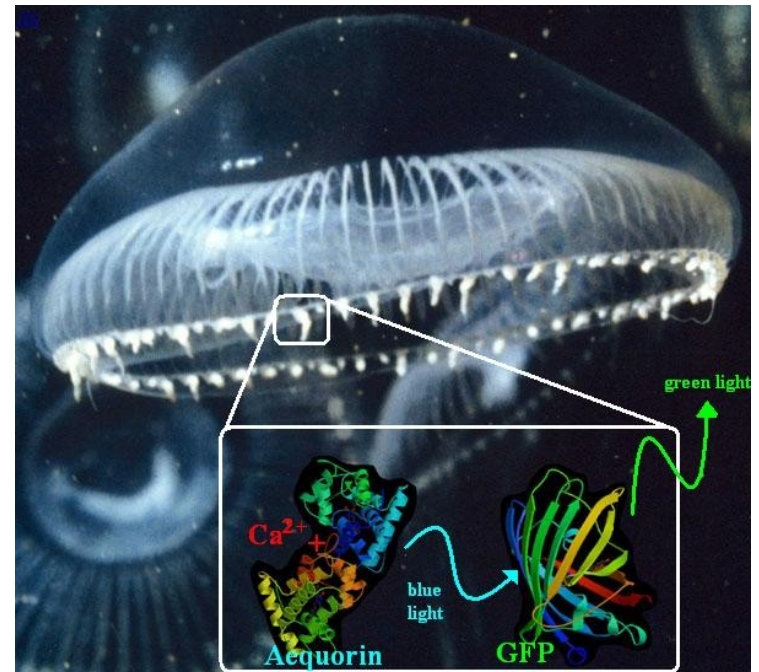
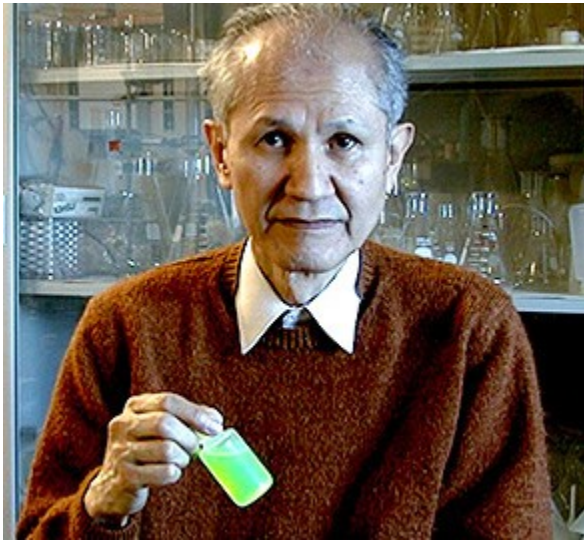


http://www.mbayaq.org/efc/living_species/default.asp?hOri=1&inhab=440

<http://www.whitney.ufl.edu/species/seapansy.htm>

Fluorescent proteins

- ▶ **Osamu Shimomura**
- ▶ 1961 discovered GFP and aequorin



Fluorescent proteins

- Douglas Prasher
- Martin Chalfie

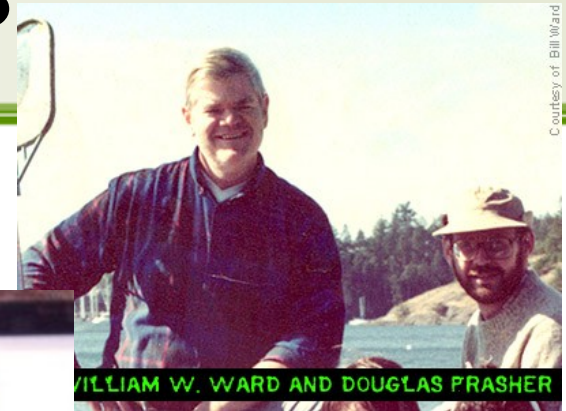
Science. 1994 Feb 11;263(5148):

Green fluorescent protein as a marker for gene expression.

Chalfie M, Tu Y, Euskirchen G, Ward WW, Prasher DC.

Department of Biological Sciences, Columbia University, New York, NY 10027.

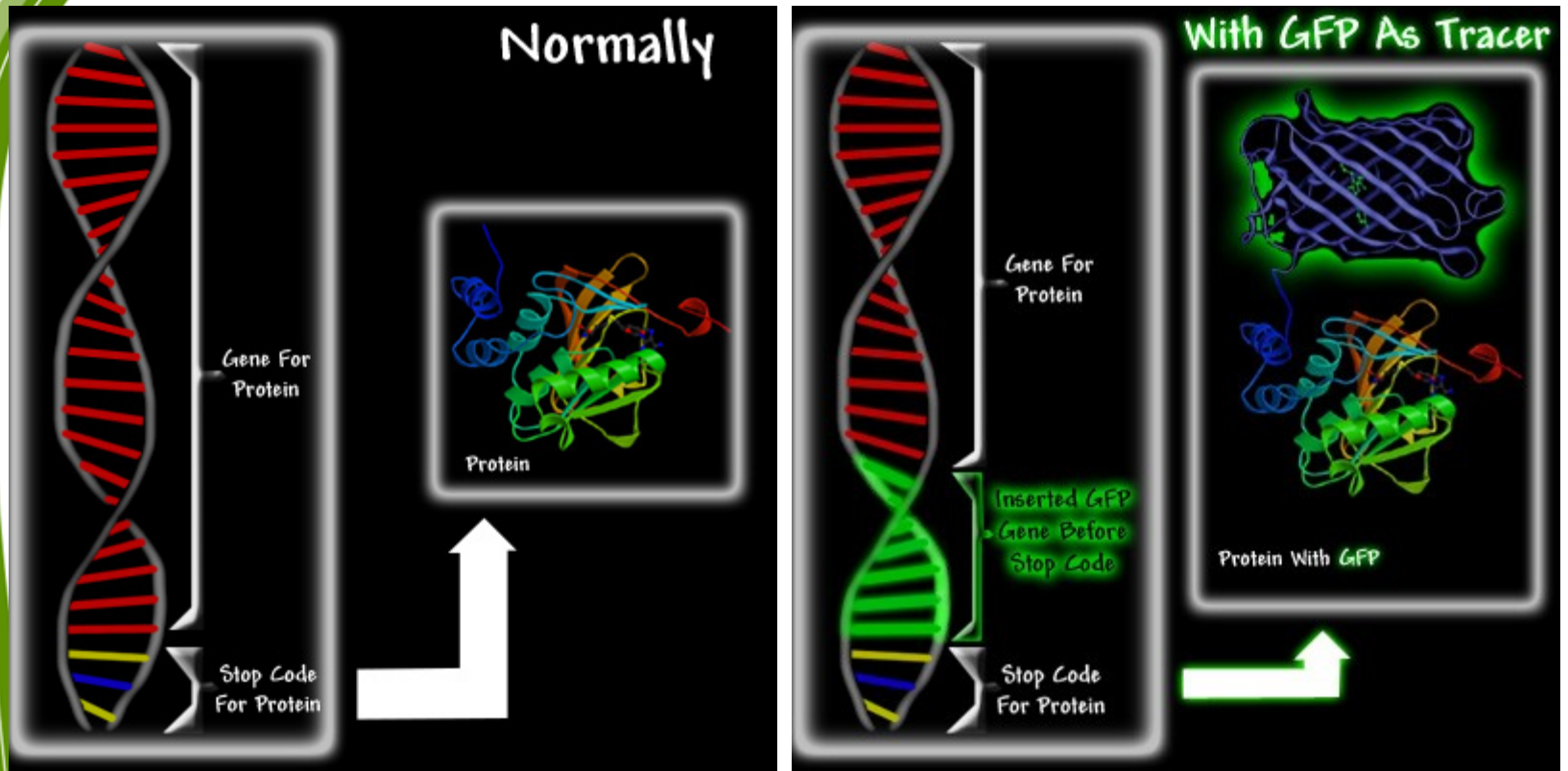
- ▶ A complementary DNA for the *Aequorea victoria* green fluorescent protein (GFP) produces a fluorescent product when expressed in prokaryotic (*Escherichia coli*) or eukaryotic (*Caenorhabditis elegans*) cells. Because exogenous substrates and cofactors are not required for this fluorescence, GFP expression can be used to monitor gene expression and protein localization in living organisms.



WILLIAM W. WARD AND DOUGLAS PRASHER



Fluorescent proteins

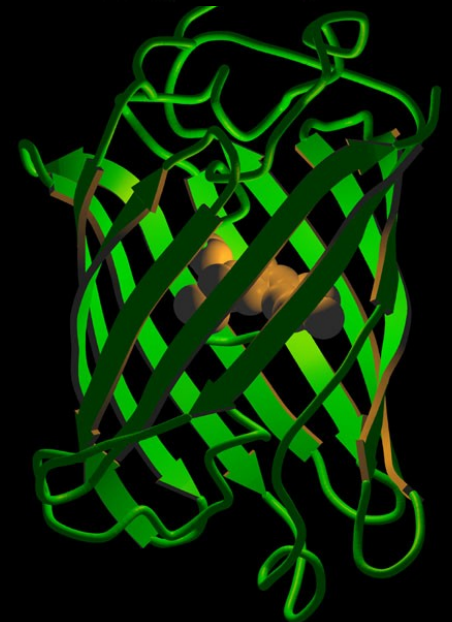
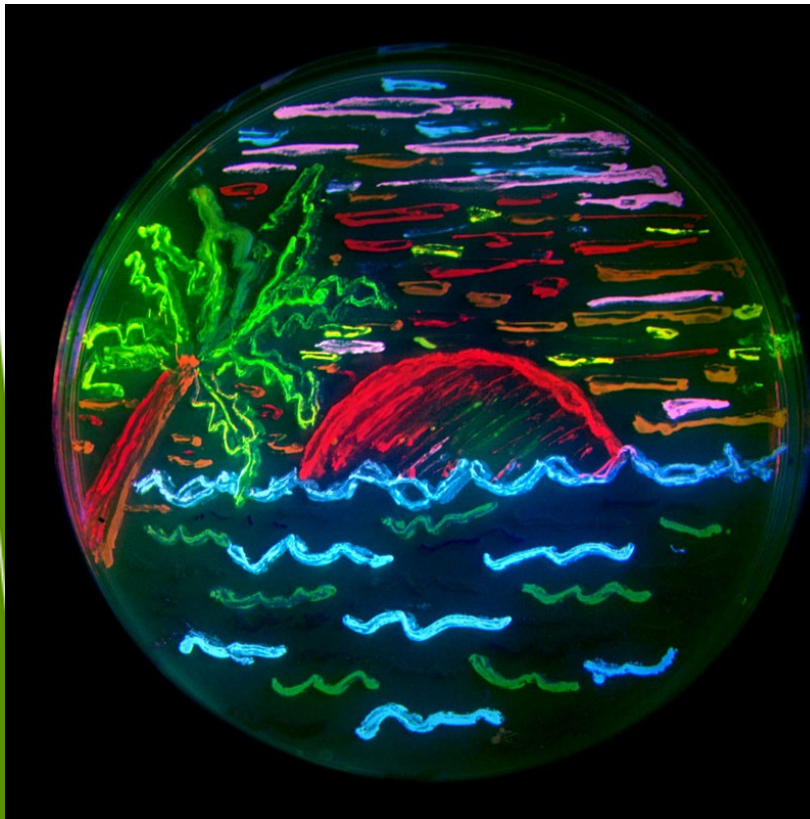


<http://www.conncoll.edu/ccacad/zimmer/GFP-ww/GFP2.htm>

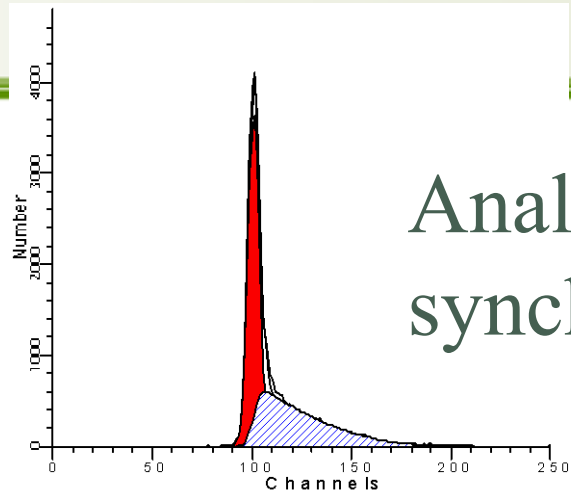
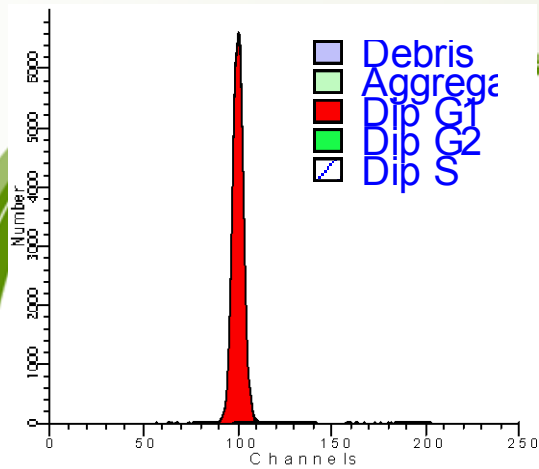
Roger Tsien

- ~ 2002 – mutated FP = wide spectrum of colors

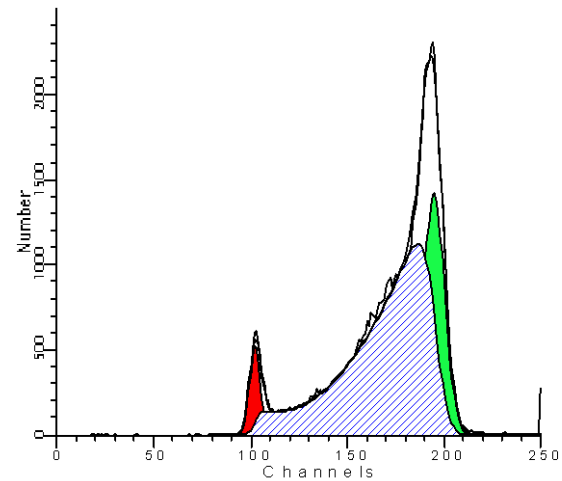
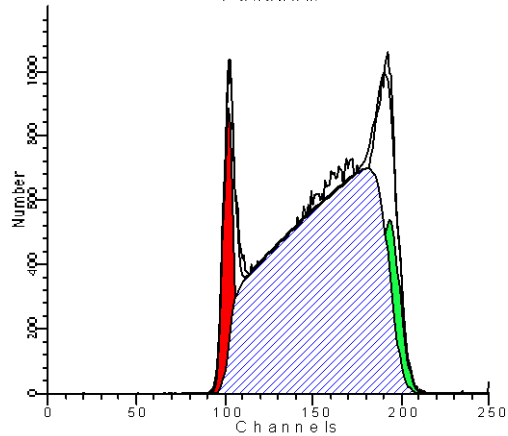
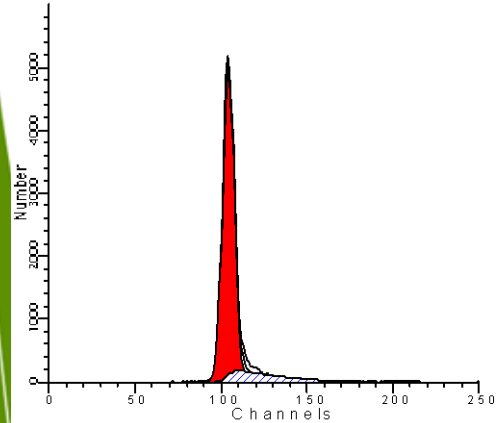
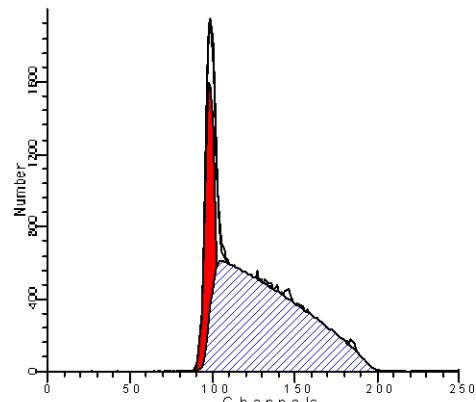
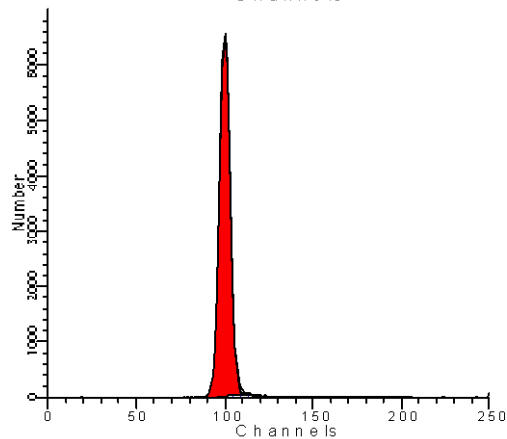
<http://www.tsienlab.ucsd.edu/>



CYTOKINETIKA

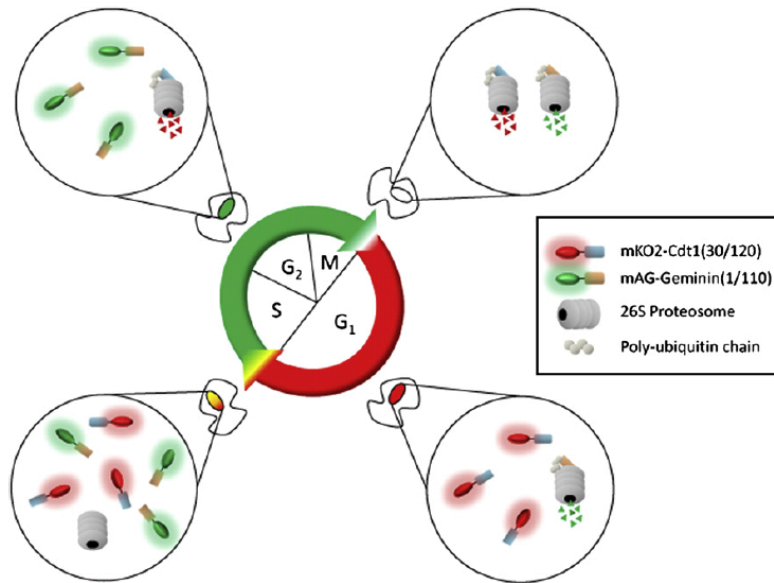


Analysis of synchronized cells



Fucci

(fluorescent ubiquitination-based cell cycle indicator) cells

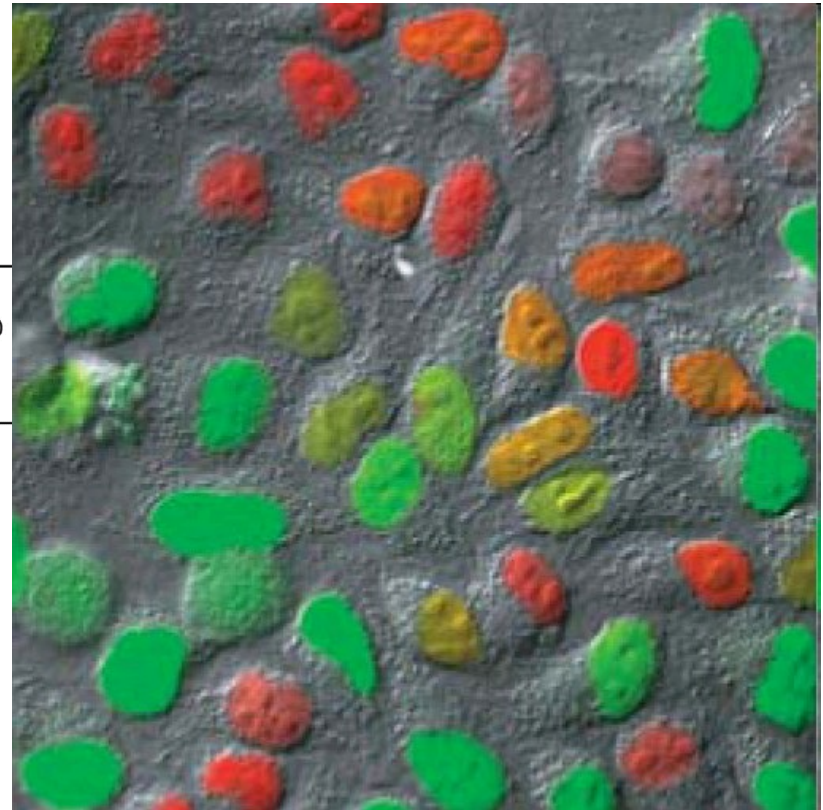


Chemistry & Biology 15, February 2008 ©2008 Elsevier Ltd

Ubiquitin E3 ligase complexes

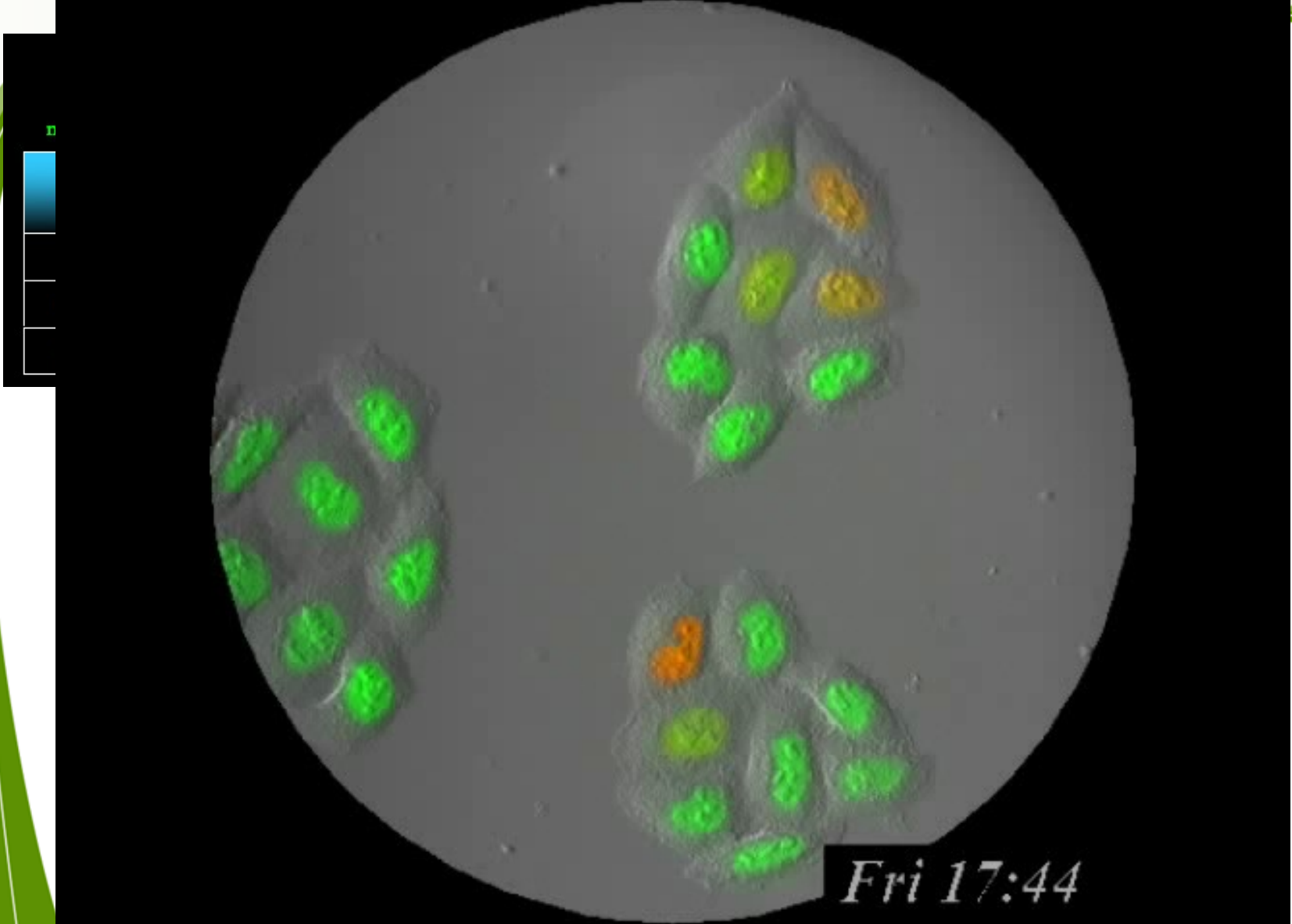
G1 - APC^{Cdh1}

S, G2, M- SCF^{Skp2}

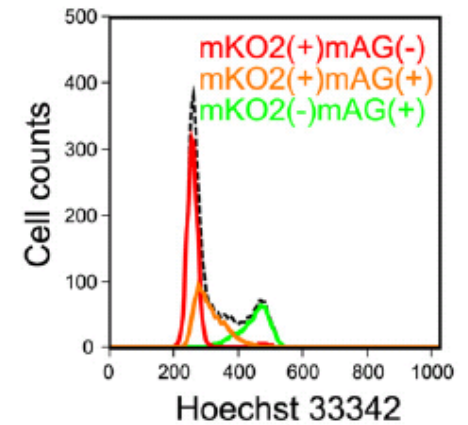
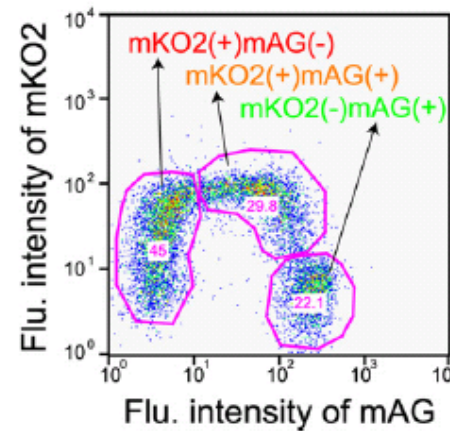
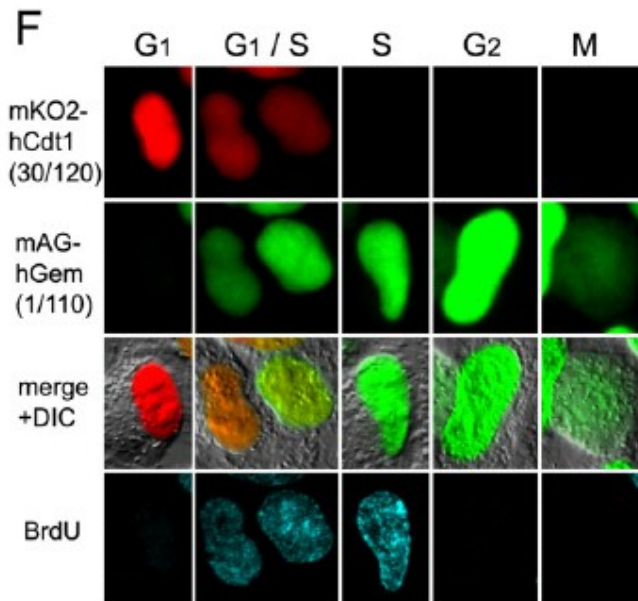


Nature Methods - 5, 283 (2008)

CYTOKINETIKA



Fucci



Resource

Cell

Visualizing Spatiotemporal Dynamics of Multicellular Cell-Cycle Progression

Asako Sakaue-Sawano,^{1,3} Hiroshi Kurokawa,^{1,4} Toshifumi Morimura,² Aki Hanyu,⁵ Hiroshi Hama,¹ Hatsuki Osawa,¹ Saori Kashiwagi,² Kiyoko Fukami,⁴ Takaki Miyata,⁶ Hiroyuki Miyoshi,⁷ Takeshi Imamura,⁵ Masaharu Ogawa,² Hisao Masai,⁸ and Atsushi Miyawaki^{1,3,*}

¹Laboratory for Cell Function and Dynamics

²Laboratory for Cell Culture Development

³Advanced Technology Development Group, Brain Science Institute, RIKEN, 2-1 Hirosawa, Wako-city, Saitama 351-0198, Japan

⁴Life Function and Dynamics, ERATO, JST, 2-1 Hirosawa, Wako-city, Saitama 351-0198, Japan

⁵School of Life Science, Tokyo University of Pharmacy and Life Science, 1432-1 Horinouchi, Hachioji, Tokyo 192-0392, Japan

⁶Departments of Biochemistry, The Cancer Institute of the Japanese Foundation for Cancer Research, 3-10-6 Ariake, Koto-ku, Tokyo 135-8550, Japan

⁷Department of Anatomy and Cell Biology, Nagoya University Graduate School of Medicine, 65 Tsurumai-cho, Syowa-ku, Nagoya, Aichi 466-8550, Japan

⁸Subteam for Manipulation of Cell Fate, BioResource Center, RIKEN Tsukuba Institute, 3-1-1 Koyadai, Tsukuba, Ibaraki 305-0074, Japan

^{*}Genome Dynamics Project, Tokyo Metropolitan Institute of Medical Science, 3-18-22 Honkomagome, Bunkyo-ku, Tokyo 113-8613, Japan

*Correspondence: matsushi@brain.riken.jp

DOI 10.1016/j.cell.2007.12.033

<http://cfd.s.brain.riken.jp/Fucci.html>

Summary

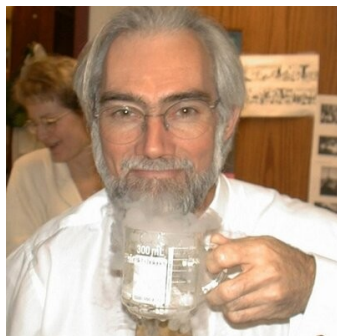
- ▶ **DNA analysis**
 - ▶ Require fine sample preparation, debris elimination, sw tool for precise analysis of histograms
 - ▶ It is possible to combine with analysis of other parameters e.g. DNA synthesis
- ▶ **Cell division enumeration**
 - ▶ Mostly for synchronized populations
- ▶ **Fluorescent proteins**
 - ▶ Fucci – elegant tool for *in vitro* a *in vivo* experiments

Trendy: instrumentace

Spectral flow cytometry

J.P. Robinson, Purdue University

CYTOKINETIKA



Cytometry Part A • 81A: 35–44, 2012

ORIGINAL ARTICLE

Cytometry

PART A
Volume 81A
International Society for
Advancement of Cytometry



Hyperspectral Cytometry at the Single-Cell Level Using a 32-Channel Photodetector

Gérald Grégori,^{1,2} Valery Patsekina,^{1,3} Bartek Rajwa,^{1,3} James Jones,⁴ Kathy Ragheb,^{1,3} Cheryl Holdman,^{1,3} J. Paul Robinson^{1,3,4*}

2
DOI: 10.1017/S1431927605510328

Microsc Microanal 11(Suppl 2), 2005
Copyright 2005 Microscopy Society of America

Multispectral Flow Cytometry: Next Generation Tools For Automated Classification

J. Paul Robinson^{a,b}, Valery Patsekina^a, Gerald Grégori^a, Bartek Rajwa^{a,b}, and James Jones^{a,b}

^aDepartment of Basic Medical Science, School of Veterinary Medicine, and ^bWeldon Department of Biomedical Engineering, Purdue University, West Lafayette, IN, 47907, USA



(12) **United States Patent**
Robinson et al.

(10) **Patent No.:** US 7,280,204 B2
(45) **Date of Patent:** Oct. 9, 2007

(54) MULTI-SPECTRAL DETECTOR AND ANALYSIS SYSTEM	5,394,237 A	2/1995	Chang et al.	188/79/51
	5,422,712 A	6/1995	Ogino	356/73
	5,675,517 A	10/1997	Stokdijk	702/85
	5,719,667 A	2/1998	Miers	356/73
(75) Inventors: Joseph Paul Robinson, West Lafayette, IN (US); Bartłomiej Rajwa, West Lafayette, IN (US); Gérald Grégori, Marseille (FR); Valery Patsekina, West Lafayette, IN (US)	6,240,541 B1*	6/2001	Banaji et al.	356/73
	6,630,307 B2*	10/2003	Bruchez et al.	435/6
	6,885,440 B2*	4/2005	Silcott et al.	356/73
	6,947,134 B2*	9/2005	Chang et al.	356/318
	7,057,712 B2*	6/2006	Beck et al.	356/72

(73) **Assignee:** Purdue Research Foundation, West Lafayette, IN (US)

(Continued)

(*) **Notice:** Subject to any disclaimer, the term of this patent is extended or adjusted under 35 U.S.C. 154(b) by 139 days.

FOREIGN PATENT DOCUMENTS

EP 0 315 939 5/1989

(Continued)

Spectral flow cytometry

SONY Sony Biotechnology Inc.

Products ▾ Resources ▾ Support ▾ About Us ▾ Contact Us ▾ Order Info ▾ Site Q

Overview Features Applications Specifications Literature

See Everything

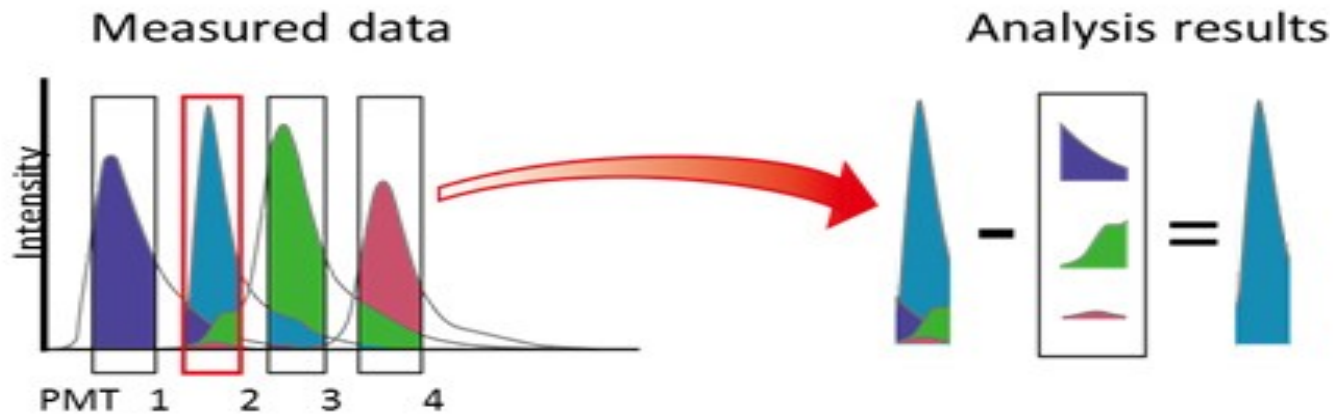
The SP6800 Spectral Analyzer is Sony Biotechnology Inc.'s newest innovative life science system fundamentally expanding the way cell and biomarker analysis can be performed. This system incorporates a unique optical bench, Blu-ray™ disc technology, and advanced algorithms to deliver some of the most accurate and precise data available.

The SP6800 Spectral Analyzer also introduces new Flow Point technology to analyze core stream and sample event location within the flow cell. To improve accuracy of data, this system also provides unique functions to display and analyze cellular autofluorescence and allows the user to easily automatically remove.



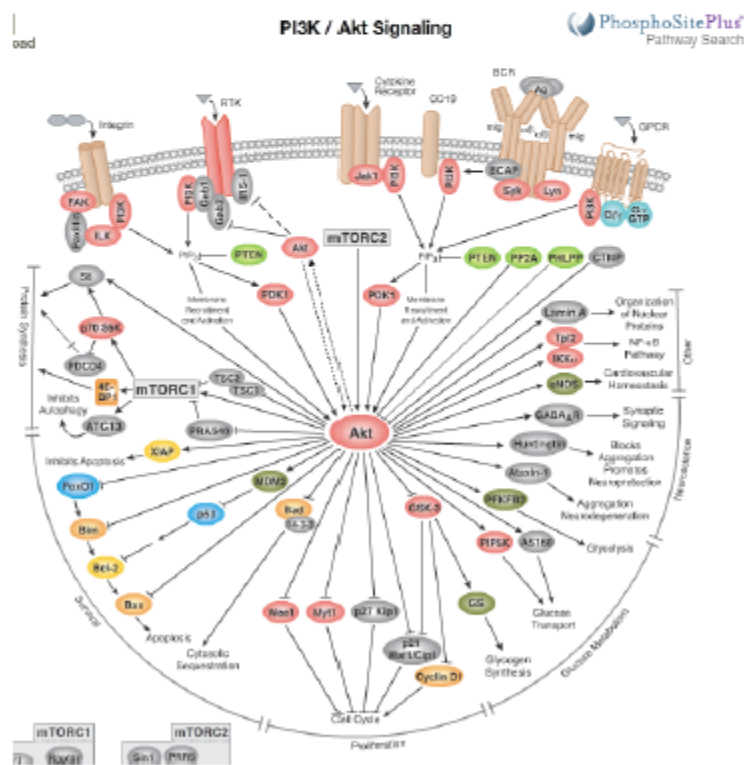
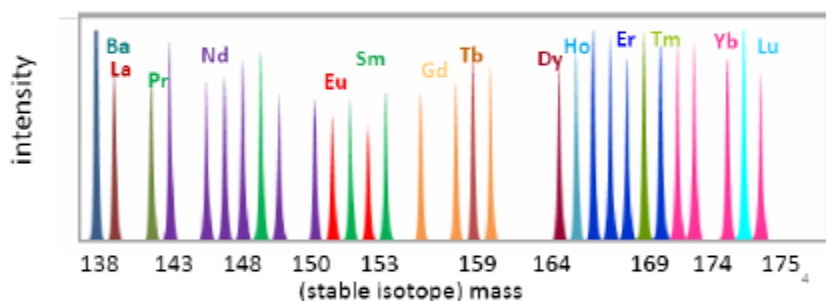
Labels in the quartz part image: Sheath inlet, outlet, Sample inlet, Insertion Notch, Quartz part

Conventional vs. spectral analysis

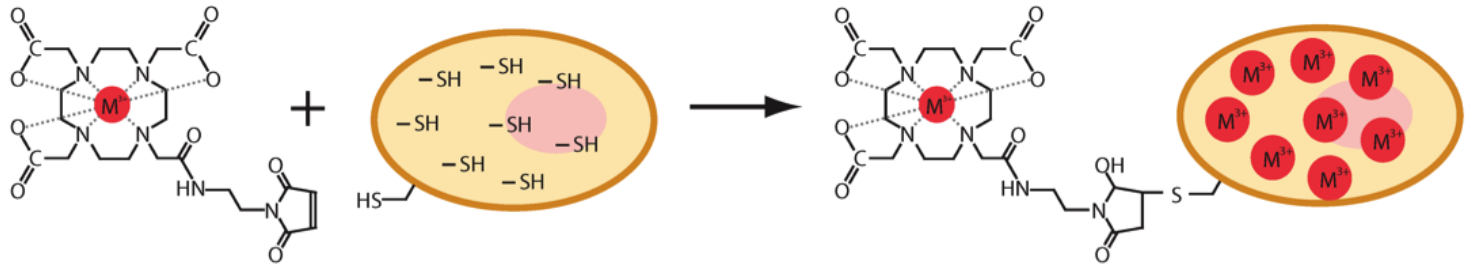


Why Mass Cytometry?

- Highly multi-parametric, on a single cell basis
- Facilitates exploration of complex pathways
- Enables discovery of cellular relationships, responses, and developmental pathways
- Allows deep-profiling of your cell system of interest



Single Cell Mass Cytometry



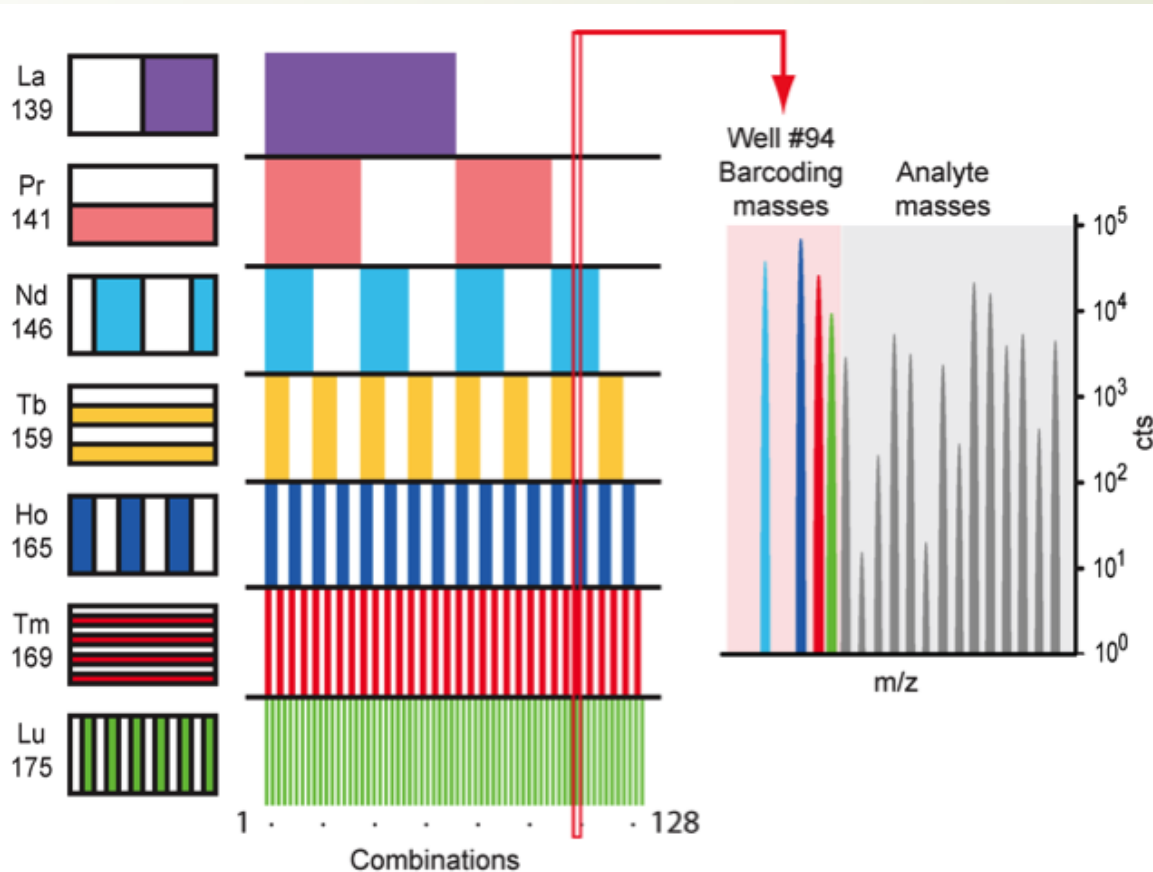
Cells were covalently labeled with a bifunctional compound, maleimido-mono-amide-DOTA (mDOTA). This compound can be loaded with a lanthanide(III) isotope ion, and reacts covalently with cellular thiol groups through the maleimide moiety.

Single-Cell Mass Cytometry of Differential Immune and Drug Responses Across a Human Hematopoietic Continuum

Sean C. Bendall, *et al.*

Science **332**, 687 (2011);

Single Cell Mass Cytometry



Seven unique lanthanide isotopes were used to generate 128 combinations, enough to barcode each sample in a 96-well plate. The seven lanthanide isotopes, their masses and their locations on the 96-well plate are shown.

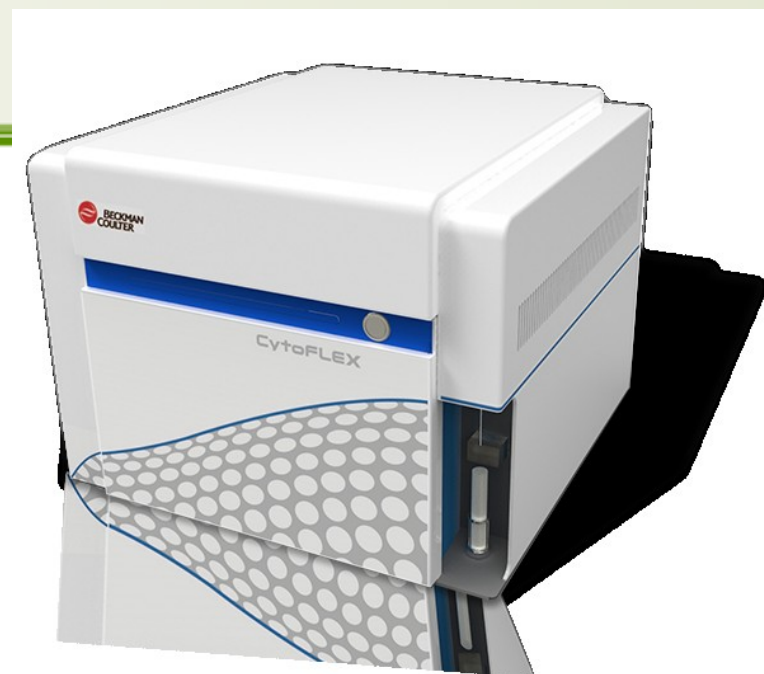
Single-Cell Mass Cytometry of Differential Immune and Drug Responses Across a Human Hematopoietic Continuum

Sean C. Bendall, *et al.*
Science **332**, 687 (2011);

Personální systémy

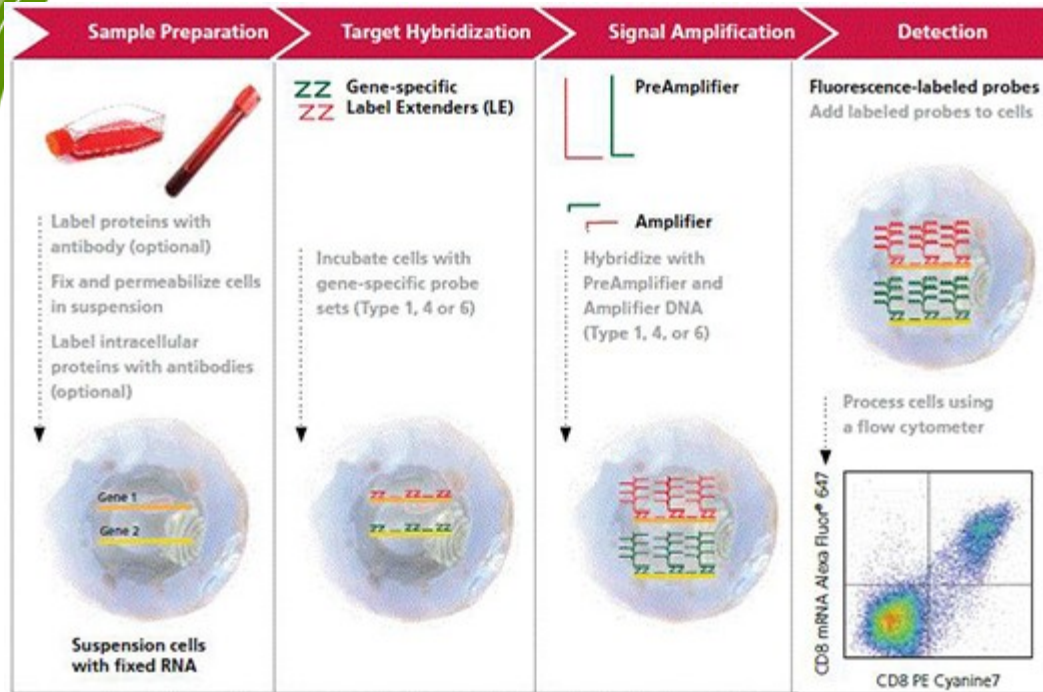


Cytonome Viva™ G1 Desktop System

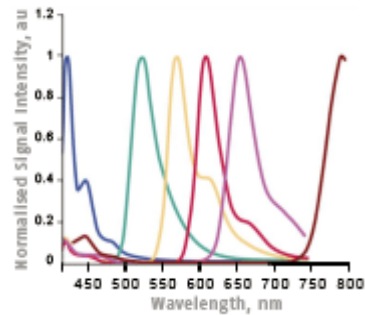


Trendy: Reagencie

PrimeFlow™ RNA Assay



Brilliant Violet polymers



Shrnutí přednášky

průtoková cytometrie:

- nabízí široké spektrum aplikací;
- rychlý způsob analýzy a separace heterogenních populací;
- separace populací;
- multiparametrové analýzy