



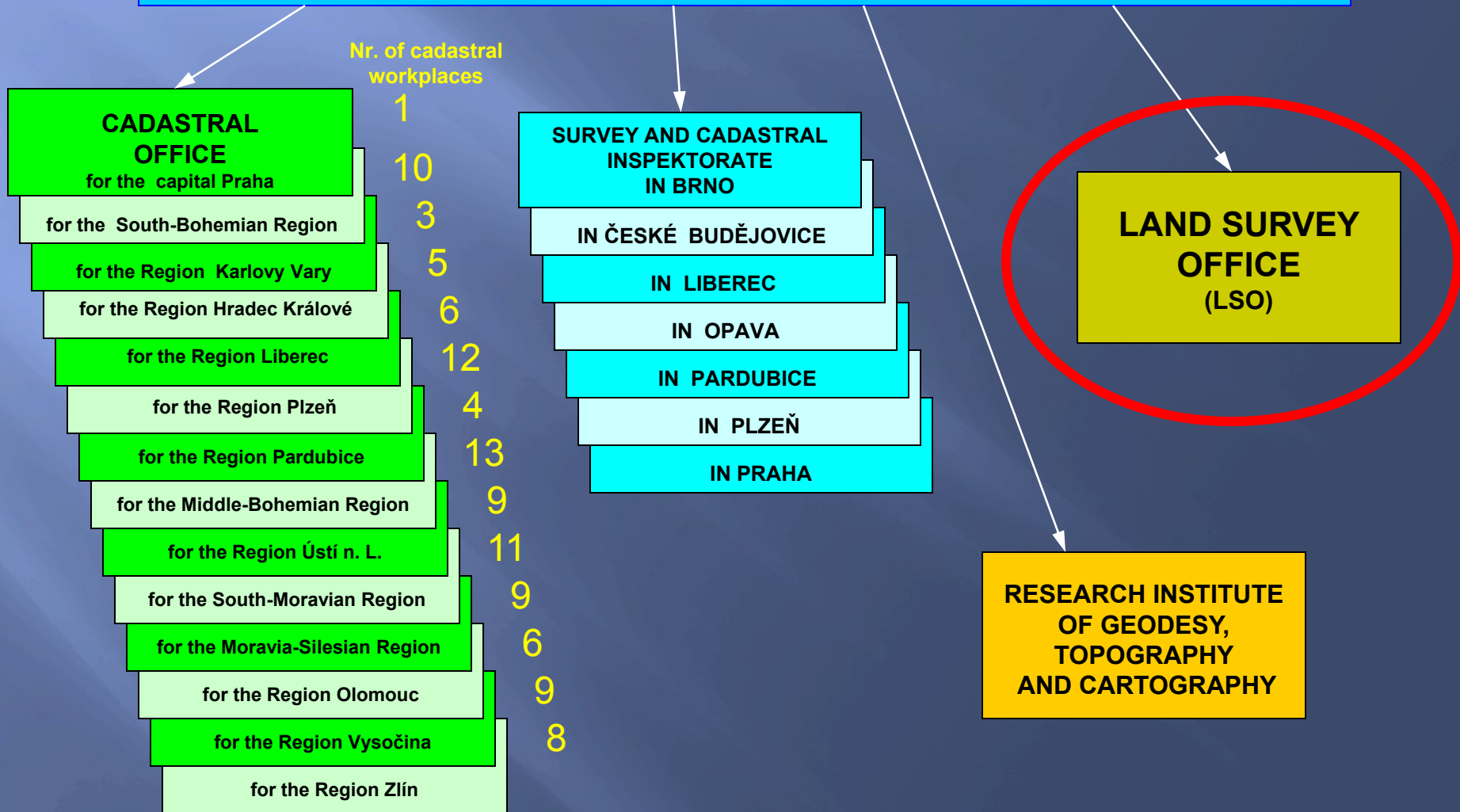
ZEMĚMĚŘICKÝ ÚŘAD

**LAND SURVEY OFFICE
(LSO)**

PRAHA 2010

Organisational chart of the COSMC sector

CZECH OFFICE FOR SURVEYING, MAPPING AND CADASTRE (COSMC)





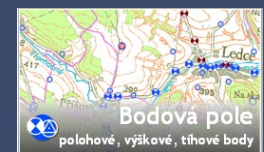
Land Survey Office

- administrative body for surveying in the Czech Republik

- administration of geodetic control of the Czech republik;
- surveying at the state boundaries;
- administration of ZABAGED®;
- maintaining of a digital terrain models;
- creation of orthophotographic representation of the Czech republik;
- production of state map series;
- standardisation of geographical names;
- managing of the Central archives of surveying, mapping and cadastre



Data extending and services

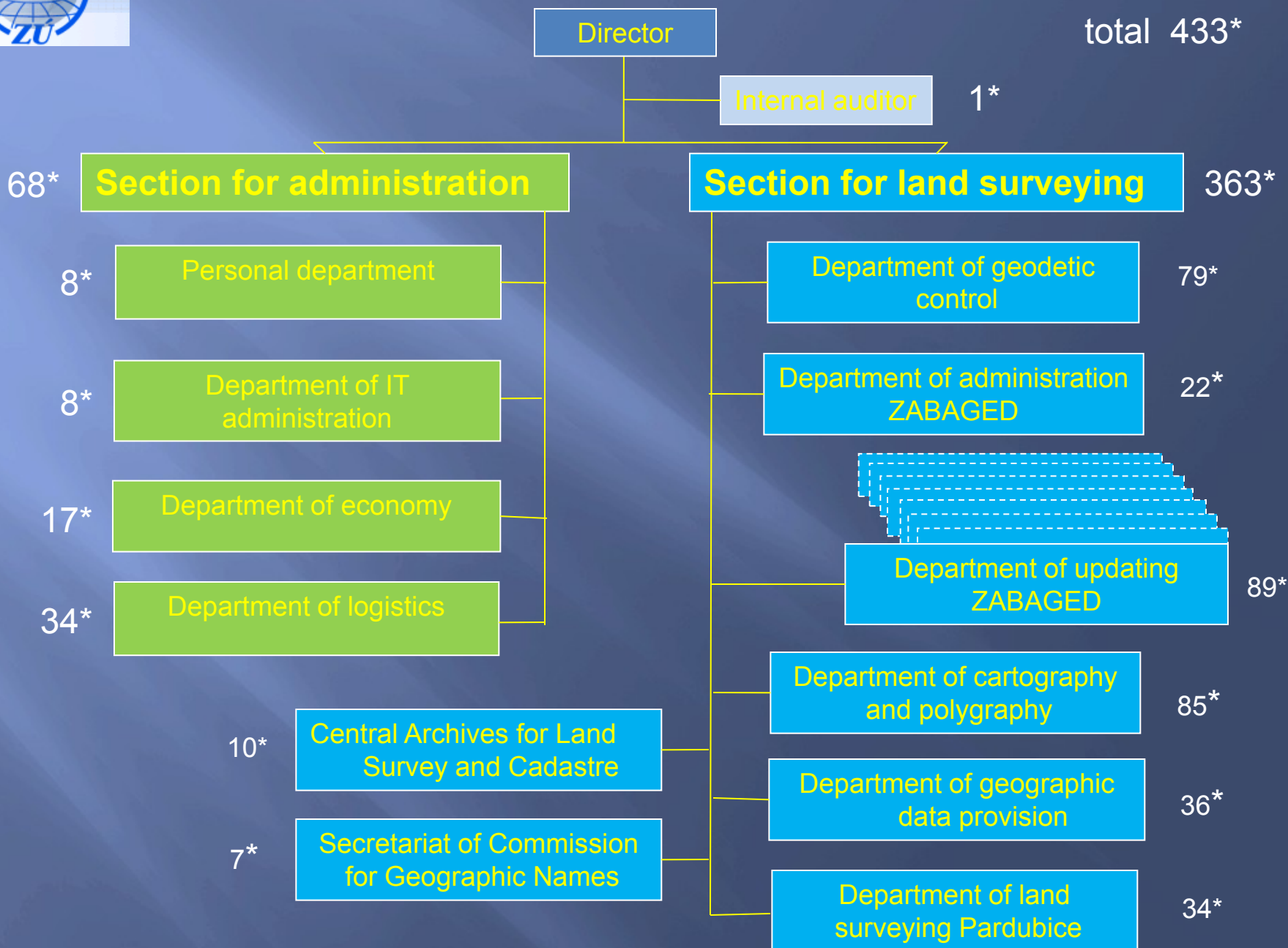




Organisational chart of the LSO

* employees

total 433*





Contemporary conditions

2004 – organisational changes;

till 2005 – period of digitalisation;

after 2005 – period of updating and data capture;

internal changes - new technologies;

reducing of the staff 2004 : 523
 2010 : 433 (- 90 17%);

number of users increases;

budget LSO: 2009 - 230 mil Kč (8,8 mil €);



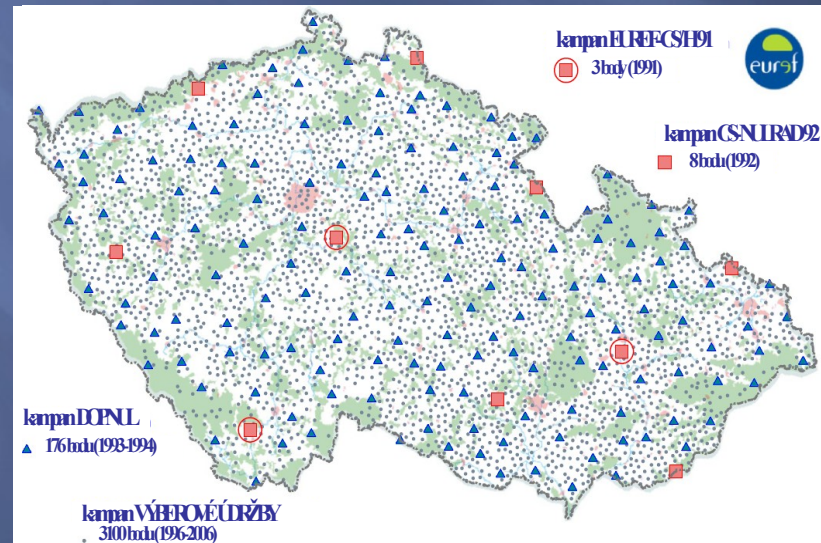
Administration of geodetic control

➤ maintenance and renewal of reference frame

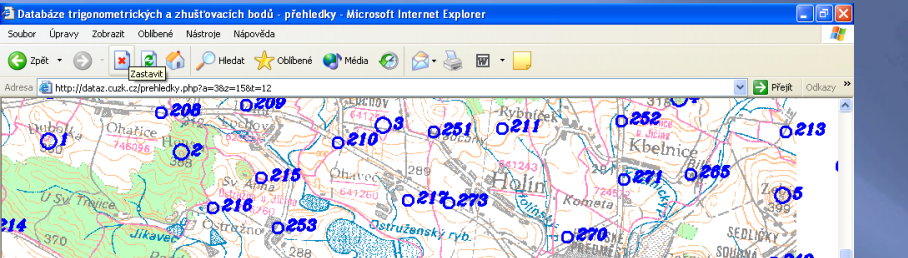
Geodetic control:

- 28 000 trigonometric points,
- 83 000 leveling points,
- 500 gravimetric points.

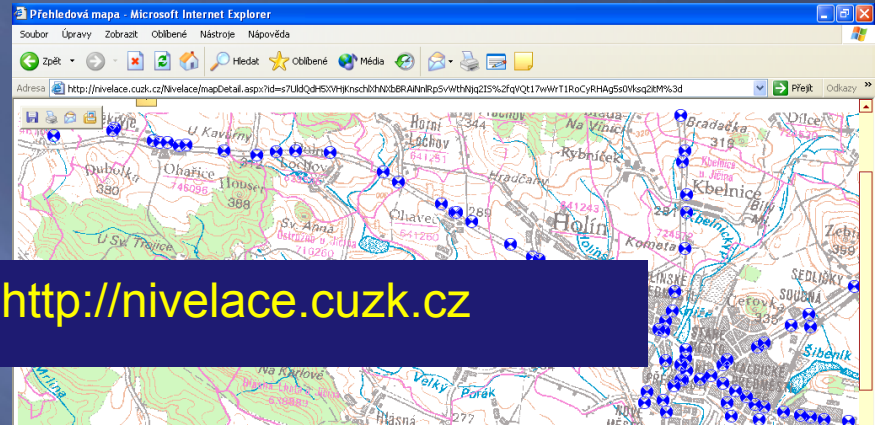
➤ implementing of a dynamic maintenance based on the communication with users – mostly private surveyors



2 databases of trigonometric, levelling and gravimetric control stations published on the Internet, free of charge



<http://dataz.cuzk.cz> <http://nivelace.cuzk.cz>



GEODETICKÉ ÚDAJE
trigonometrického bodu

vyvořeno pro web 21.09.2004

Líst č.: 1/1
Stav k: 2002

| | |
|-------|--------|
| TL | 1512 |
| ZM-50 | 03-34 |
| SMO-5 | 040906 |

vápence 8

| x | Nadmořská výška | |
|------------|-----------------|----------------|
| | Bpv | vztahuje se na |
| 1012363.67 | 289.66 | hranol |

NIVELAČNÍ ÚDAJE

Nivelační pořad: Dbc Mladá Boleslav-Jičín

| Předchozí bod | Nivelační bod | Délka v km | | Nadmořská výška Bpv | Výška z roku |
|---------------|---------------|------------|------------|---------------------|--------------|
| | | oddlu | od počátku | | |
| Dbc-79.1 | Dbc-79.2 | 0.240 | 35.638 | 279.540 m | 1986 |

Místopisný popis: Jičín, dům čp.304

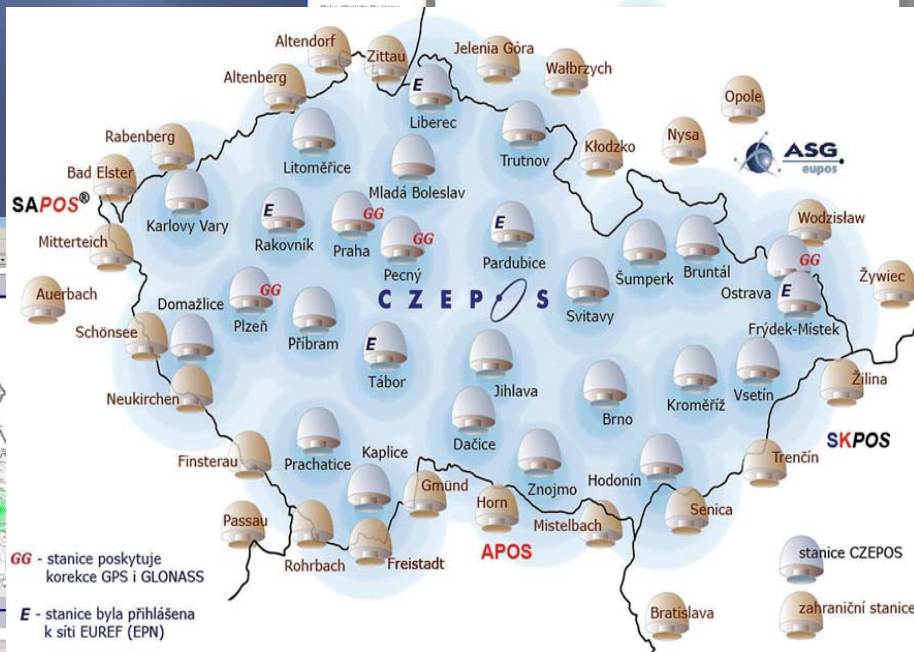
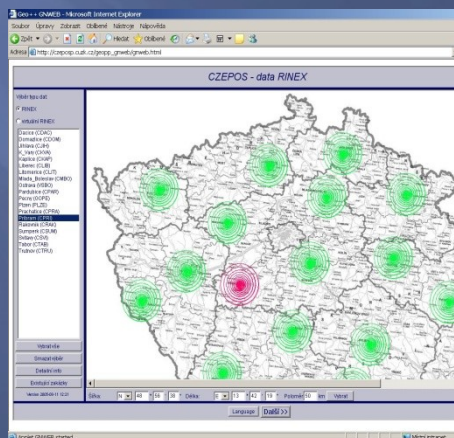
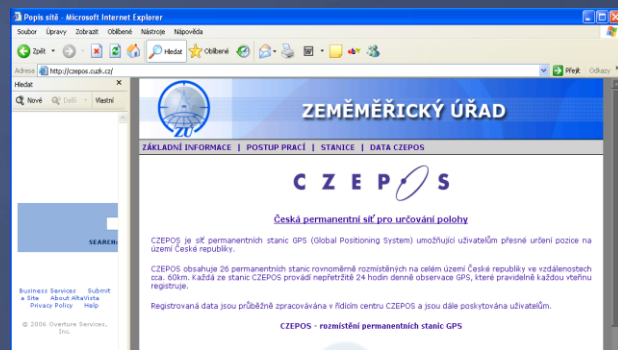
Poznámky:

Stav a stáří objektu: značka 0,4 m nad zemí zachovalá omltnutá jednopatrová cihlová stavba s kamennou podezdívkou z roku 1962

Úz. jednotka: 360400101 Vlastník:



CZEPOS - Czech Network of the Permanent GNSS Stations





Surveying and maintenance of the state boundaries

- period of transformation and updating of state boundaries documentation from a graphical to a digital form and specifications of positioning coordinates of all break point of the state border,
- state border documentation administrator – Ministry of interior,
- processing coordination by the international boundary commissions of neighbour countries.

