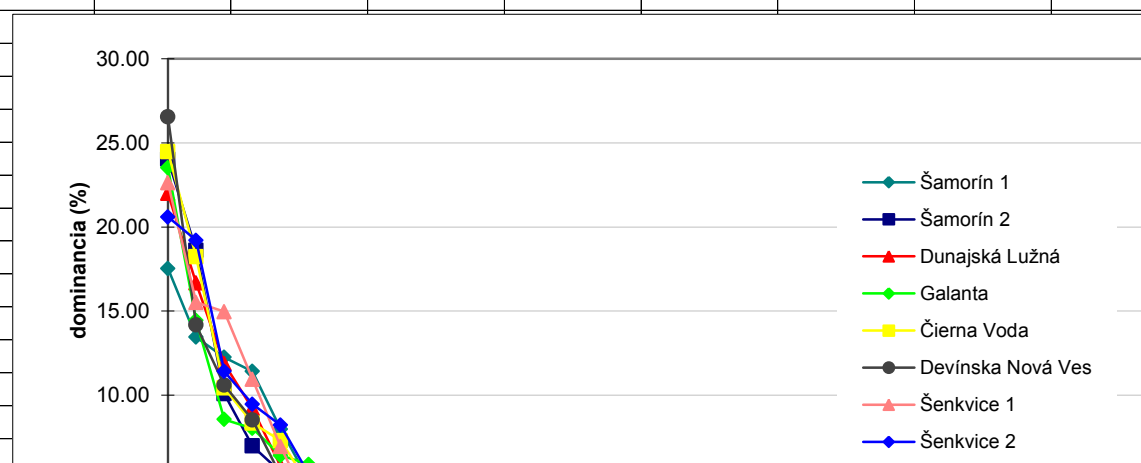


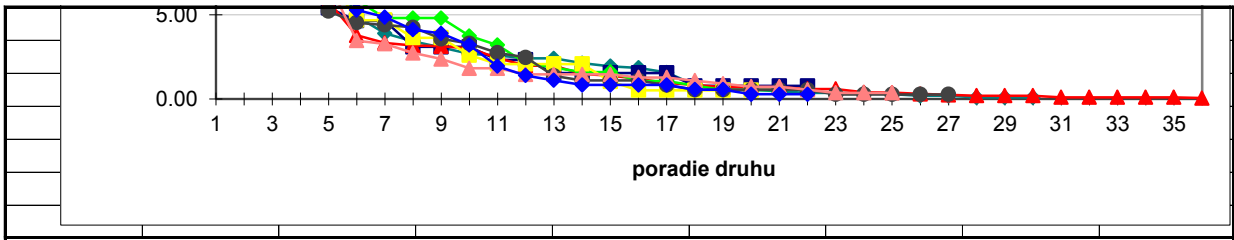
8 lokalít

Šamorín 1	Šamorín 2	Dunajská Lužná	Galanta	Čierna Voda	Devínska Nová Ves	Šenkvice 1	Šenkvice 2
17.53	24.03	21.99	23.53	24.48	26.55	22.63	20.60
13.45	18.60	16.67	14.44	18.23	14.17	15.51	19.20
12.24	10.08	11.87	8.56	10.42	10.59	14.96	11.41
11.41	6.98	9.20	8.02	8.33	8.53	10.95	9.46
7.98	5.43	5.78	6.42	7.29	5.23	6.93	8.21
4.92	4.65	3.78	5.88	4.69	4.54	3.47	5.29
3.90	4.65	3.33	4.81	4.69	4.40	3.28	4.87
3.43	3.10	3.18	4.81	3.65	4.26	2.74	4.12
3.06	3.10	3.14	4.81	3.65	3.58	2.37	3.90
2.69	3.10	3.01	3.74	2.60	3.30	1.82	3.20
2.60	2.33	2.44	3.21	2.08	2.75	1.82	1.95
2.41	2.33	1.99	2.14	2.08	2.48	1.46	1.39
2.41	1.55	1.99	1.87	2.08	1.38	1.46	1.11
2.13	1.55	1.49	1.60	2.08	1.10	1.46	0.83
1.95	1.55	1.39	1.60	1.04	1.10	1.46	0.83
1.86	1.55	1.19	1.07	0.52	1.10	1.28	0.83
1.58	1.55	0.95	1.07	0.52	0.83	1.28	0.83
0.83	0.78	0.85	0.80	0.52	0.55	1.09	0.56
0.56	0.78	0.70	0.53	0.52	0.55	0.91	0.56
0.56	0.78	0.70	0.53	0.52	0.55	0.73	0.28
0.46	0.78	0.70	0.53		0.55	0.73	0.28
0.37	0.78	0.60			0.55	0.55	0.28
0.37		0.60			0.28	0.36	
0.37		0.40			0.28	0.36	
0.28		0.37			0.28	0.36	
0.19		0.30			0.28		
0.19		0.25			0.28		
0.09		0.20					
0.09		0.20					
0.09		0.20					
		0.10					
		0.10					
		0.10					
		0.10					
		0.10					
		0.05					

Krivky dominancie pre druhy podľa ich poradia v nidocenózach sledovaných lokalít



8 lokalit

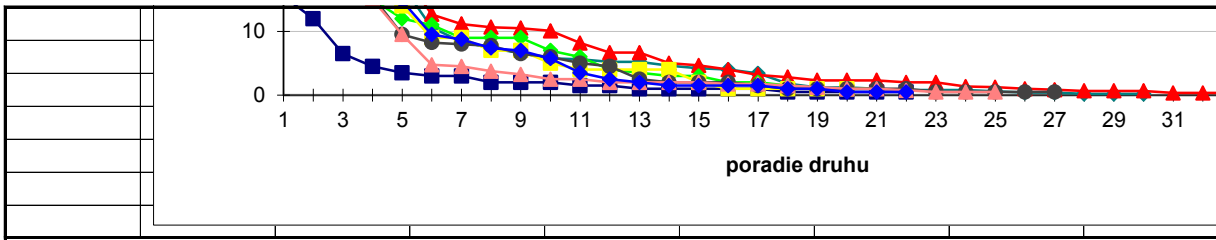


8 lokalít

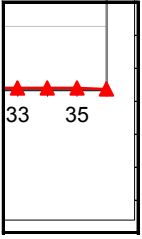
	Šamorín 1	Šamorín 2	Dunajská Lužná	Galanta	Čierna Voda	Devínska Nová Ves	Šenkvice 1	Šenkvice 2
	37.8	15.5	73.66667	44	47	48.25	31	37
	29	12	55.83333	27	35	25.75	21.25	34.5
	26.4	6.5	39.76667	16	20	19.25	20.5	20.5
	24.6	4.5	30.83333	15	16	15.5	15	17
	17.2	3.5	19.35	12	14	9.5	9.5	14.75
	10.6	3	12.66667	11	9	8.25	4.75	9.5
	8.4	3	11.16667	9	9	8	4.5	8.75
	7.4	2	10.66667	9	7	7.75	3.75	7.4
	6.6	2	10.51667	9	7	6.5	3.25	7
	5.8	2	10.08333	7	5	6	2.5	5.75
	5.6	1.5	8.166667	6	4	5	2.5	3.5
	5.2	1.5	6.666667	4	4	4.5	2	2.5
	5.2	1	6.666667	3.5	4	2.5	2	2
	4.6	1	5	3	4	2	2	1.5
	4.2	1	4.666667	3	2	2	2	1.5
	4	1	4	2	1	2	1.75	1.5
	3.4	1	3.166667	2	1	1.5	1.75	1.5
	1.8	0.5	2.833333	1.5	1	1	1.5	1
	1.2	0.5	2.333333	1	1	1	1.25	1
	1.2	0.5	2.333333	1	1	1	1	0.5
	1	0.5	2.333333	1		1	1	0.5
	0.8	0.5	2			1	0.75	0.5
	0.8		2			0.5	0.5	
	0.8		1.333333			0.5	0.5	
	0.6		1.25			0.5	0.5	
	0.4		1			0.5		
	0.4		0.833333			0.5		
	0.2		0.666667					
	0.2		0.666667					
	0.2		0.666667					
			0.333333					
			0.333333					
			0.333333					
			0.333333					
			0.333333					
			0.166667					

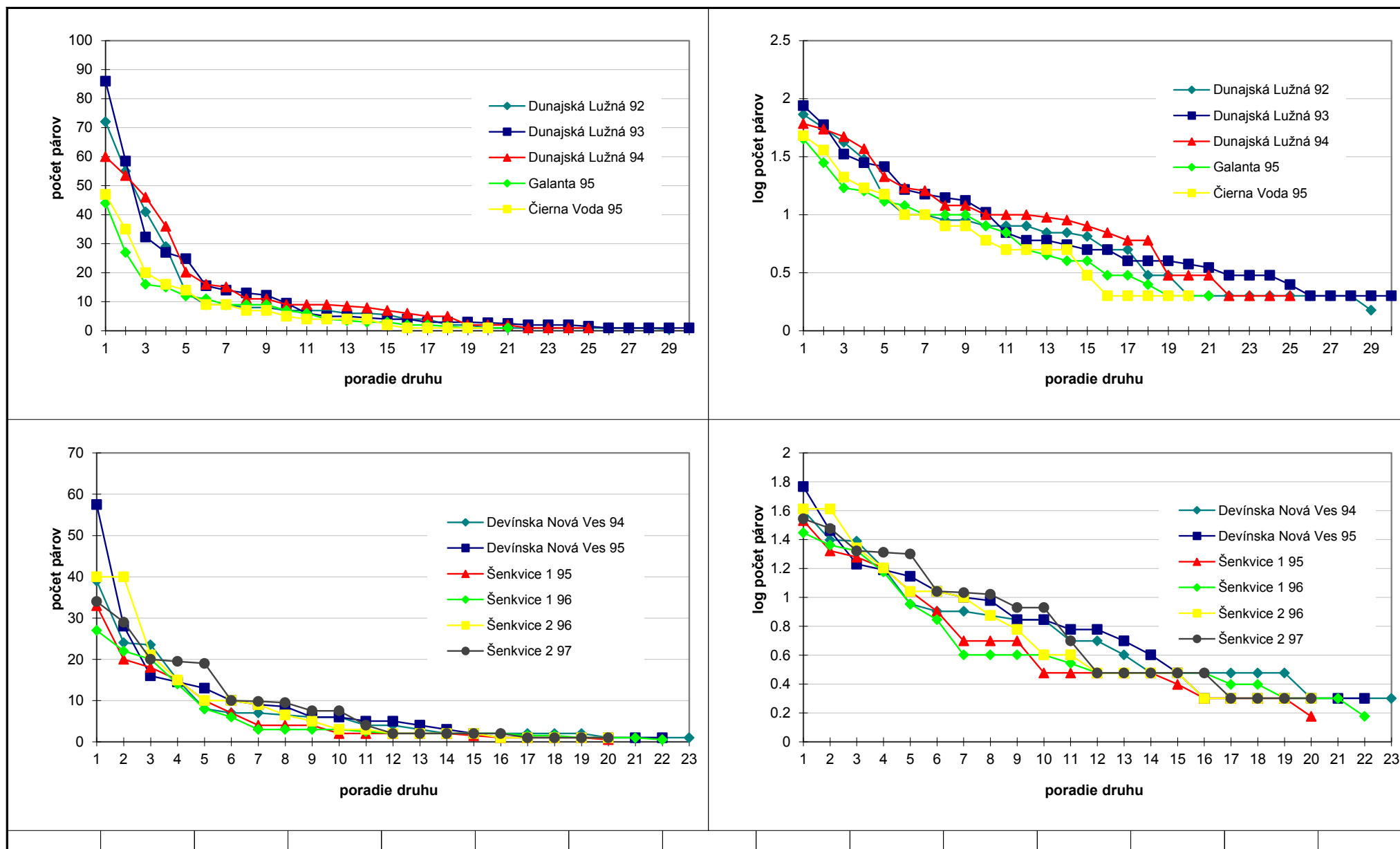


8 lokalit



8 lokalit





testy

testy robené s priemernými hodnotami za sledované obdobie, treba spraviť za každý rok zvlášť, bude to lepšie																	
Galanta a Čierna Voda netreba prerábať, sú z 1 roka iba																	
Geometric series																	
										Šamorín1	Šamorín1	Šamorín1	Šamorín1	Šamorín1		Šamorín2	Šamorín2
	Šamorín 1	Šamorín 2	Dunajská Lužná	Galanta	Čierna Voda	Devínska Nová Ves	Šenkvice1	Šenkvice2		1996	1997	1999	2000	2001		1999	2000
S	30	22	36	21	20	27	25	22		25	23	25	26	24		20	18
N	215.6	64.5	334.9667	187	192	181.75	137	179.65		187	171	228	232	260		73	56
df	29	21	35	20	19	26	24	21		24	22	24	25	23		19	17
chi-square	7.962695	11.57176	28.69311	10.3509	13.22766	26.92453	19.81588	5.215837		16.42963	6.761317	12.59796	24.77667	10.23103		14.47407	18.8939
Log series																	
										Šamorín1	Šamorín1	Šamorín1	Šamorín1	Šamorín1		Šamorín2	Šamorín2
	Šamorín 1	Šamorín 2	Dunajská Lužná	Galanta	Čierna Voda	Devínska Nová Ves	Šenkvice 1	Šenkvice 2		1996	1997	1999	2000	2001		1999	2000
S	30	22	36	21	20	27	25	22		25	23	25	26	24		20	18
N	215.6	64.5	334.9667	187	192	181.75	137	179.65		187	171	228	232	260		73	56
chi-square	6.349763	1.793855	2.951134	8.557902	2.968205	4.603993	5.496079	3.396786		10.08603	4.826874	4.031036	4.691143	6.342466		3.980498	1.339347
df	5	3	6	5	5	5	4	5		5	4	5	5	5		3	2

testy

	Šamorín1 1996	Šamorín1 1997	Šamorín1 1999	Šamorín1 2000	Šamorín1 2001	Šamorín2 1999	Šamorín2 2000	Dunajská Lužná 1992	Dunajská Lužná 1993	Dunajská Lužná 1994	Galanta 1995	Čierna Voda 1995	Devínska Nová Ves 1994	Devínska Nová Ves 1995	Šenkvice 1 1995	Šenkvice 1 1996	Šenkvice 2 1996	Šenkvice 2 1997
S - počet druhov	25	23	25	26	24	20	18	29	30	25	21	20	23	22	20	22	20	20
N - počet párov	187	171	228	232	260	73	56	304.5	348.1	345.3	187	192	169	194.5	131.5	128.5	175.5	183.8
Geometric series																		
chi-square	16.430	6.761	12.598	24.777	10.231	14.474	18.894	81.210	74.787	16.975	10.351	13.228	21.105	33.807	18.946	24.641	21.877	5.742
df	24	22	24	25	23	19	17	28	29	24	20	19	22	21	19	21	19	19
	P > 0.80	P > 0.99	P > 0.95	P > 0.30	P > 0.98	P > 0.70	P > 0.30	***	***	P > 0.80	P > 0.95	P > 0.80	P > 0.50	*	P > 0.30	P > 0.20	P > 0.20	P > 0.99
Log series																		
chi-square	10.086	4.827	4.031	4.691	6.342	3.980	1.339	6.346	3.187	13.267	8.558	2.968	3.209	3.659	2.517	3.648	3.180	4.117
df	5	4	5	5	5	3	2	6	6	5	5	5	5	5	5	4	5	5
	P > 0.05	P > 0.30	P > 0.50	P > 0.30	P > 0.20	P > 0.20	P > 0.50	P > 0.30	P > 0.70	*	P > 0.10	P > 0.70	P > 0.50	P > 0.50	P > 0.70	P > 0.30	P > 0.50	P > 0.50
Log normal																		
chi-square	3.582	3.438	2.390	4.824	4.921	1.966	2.290	5.764	2.233	10.335	5.202	2.304	3.597	2.993	3.817	6.217	4.579	6.289
df	3	2	3	3	3	1	0	4	4	3	3	3	3	3	3	2	3	3
	P > 0.30	P > 0.10	P > 0.30	P > 0.10	P > 0.10	P > 0.10	???	P > 0.20	P > 0.50	*	P > 0.10	P > 0.50	P > 0.30	P > 0.30	P > 0.20	*	P > 0.20	P > 0.05
Broken stick																		
chi-square	6.557	4.655	7.666	13.066	10.910	4.225	3.573	44.130	24.189	13.454	5.585	7.737	11.565	6.204	22.734	14.021	16.615	12.453
df	5	4	5	5	5	3	2	6	6	5	5	5	5	5	5	4	5	5
	P > 0.20	P > 0.30	P > 0.10	*	P > 0.05	P > 0.20	P > 0.10	***	***	*	P > 0.30	P > 0.10	*	P > 0.20	***	**	**	*

geometric series

Šamorín1 1996	Abundance						Šamorín1 1997	Abundance
	Observed	Expected						
	38	24.09564	8.023493					31
	27	21.10368	1.647415					25
	18	18.48324	0.012634					17
	15	16.18818	0.08721					17
	11	14.17809	0.712385					13
	8	12.4176	1.571573					9
	8	10.8757	0.760381					8
	7	9.525268	0.66948					7
	6	8.342515	0.657761					7
	5	7.306625	0.728177					5
	5	6.399362	0.306001					5
	5	5.604753	0.065253					4
	5	4.908811	0.001694					4
	5	4.299284	0.114206					4
	4	3.765442	0.014611					4
	4	3.297887	0.149478					3
	3	2.888388	0.004313					2
	3	2.529737	0.087419					1
	3	2.21562	0.277689					1
	2	1.940506	0.001824					1
	1	1.699553	0.287943					1
	1	1.48852	0.160328					1
	1	1.30369	0.070744					1
	1	1.141811	0.017613					
	1	1.000032	1.05E-09					
S	25					S		23
N	187	186.9999	16.42963	chi-square		N		171
k						k		
0.12417	0.005348					0.005848	0.1342	0.005848
Ck						Ck		
1.03772						1.03773		

geometric series

		Šamorín1 2000	Abundance				
			Observed	Expected			
			45	30.52183	6.867784		
			37	26.62114	4.046434		
			28	23.21896	0.984469		
			23	20.25158	0.373		
			19	17.66343	0.101137		
			13	15.40604	0.375763		
			9	13.43715	1.465213		
			7	11.71988	1.90081		
			6	10.22208	1.743868		
			6	8.915698	0.95352		
			6	7.776272	0.40574		
			5	6.782464	0.46844		
			5	5.915665	0.141733		
			5	5.159643	0.004939		
			4	4.500241	0.055606		
			3	3.92511	0.218039		
			2	3.423481	0.591882		
			1	2.98596	1.320861		
			1	2.604354	0.988327		
			1	2.271518	0.711752		
			1	1.981218	0.485958		
			1	1.728018	0.306716		
			1	1.507178	0.170669		
			1	1.31456	0.075271		
			1	1.146559	0.018734		
			1	1.000029	8.49E-10		
			S	26			
chi-square			N	232	232.0001	24.77667	chi-square
			k				
		0.00431	0.1278	0.00431			
			Ck				
			1.029418				

geometric series

	Šamorín1 2001	Abundance						Šamorín2 1999
		Observed	Expected					
		40	39.18176	0.017088				
		39	33.40558	0.936895				
		35	28.48093	1.492165				
		29	24.28227	0.916593				
		24	20.70258	0.525199				
		14	17.65061	0.75504				
		12	15.04855	0.617579				
		8	12.8301	1.818367				
		8	10.93868	0.789479				
		7	9.326102	0.580173				
		7	7.951248	0.113803				
		7	6.779075	0.0072				
		6	5.779704	0.008397				
		5	4.92766	0.001062				
		4	4.201224	0.009638				
		4	3.58188	0.048808				
		3	3.053839	0.000949				
		2	2.603642	0.139952				
		1	2.219813	0.670302				
		1	1.892568	0.420951				
		1	1.613566	0.233311				
		1	1.375694	0.1026				S
		1	1.172889	0.025485				N
		1	0.999982	3.28E-10				k
							0.013699	0.10804
								Ck
								1.113094
	S	24						
	N	260	259.9999	10.23103	chi-square			
	k							
0.003846	0.14742	0.003846						
	Ck							
	1.022243							

log series

	Dunajská Lužná				observed	expected	
	1993	86		1	2.5	10	11.45965 0.18592
		58.5		2	4.5	7	4.252602 1.77496
		32.3		3	8.5	3	4.338837 0.413126
		27		4	16.5	5	3.988485 0.256529
		24.85		5	32.5	3	3.163202 0.00842
		15.5		6	64.5	1	1.939089 0.454795
		14		7	128.5	1	0.737576 0.093369
		13					chi-square 3.187119
		12.25					df 6
		9.45					
		6					
		5					
		5					
		4.5					
		4					
		4		S		30	
		3		N		348.1	
		3					
		3		S/N			0.086182
		2.75		x		0.97789	0.086183
		2.5					
		2		a		7.870508	
		2					
		2					
		1.5					
		1					
		1					
		1					
		1					
		1					

log normal

Dunajská Lužná						upper bound	logUB
1992		S	29			0.5	-0.30103
72		N	304.5		1	2.5	0.39794
55					2	4.5	0.653213
41		priemer	0.625504		3	8.5	0.929419
29		sm.odch.	0.56851		4	16.5	1.217484
13		sm.odch2	0.323204		5	32.5	1.511883
9					6	64.5	1.80956
9		x0	-0.30103		7	128.5	2.108903
8		gama	0.37649		8	256.5	2.409087
8		podľa gamy z tabuliek			9	512.5	2.709694
7		theta	0.2156		10	1024.5	3.010512
7					11	viac	viac
7		ux	0.425744				
6		Vx	0.508289				observed
6		z0	-1.0194			0.5	-
5.5					1	2.5	12
4		p0	0.154007		2	4.5	2
4					3	8.5	8
2		S*	34.27925		4	16.5	3
2					5	32.5	1
1					6	64.5	2
1		lambda	60.2966		7	128.5	1
1							
1							
1							
1							
1							
1							n_clas-3
1							
1							

log normal

StandUB	sum(exp.s p)	Dunajská Lužná				
-1.0194	5.27925	1993		S	30	
-0.039	16.60644	86		N	348.1	1
0.319056	21.42994	58.5				2
0.706472	26.05404	32.3		priemer	0.697759	3
1.110522	29.70684	27		sm.odch.	0.538853	4
1.523457	32.09147	24.85		sm.odch2	0.290362	5
1.940988	33.38354	15.5				6
2.360857	33.96675	14		x0	-0.30103	7
2.781906	34.18662	13		gama	0.291067	8
3.203547	34.25598	12.25		podľa gamy z tabuliek		9
3.625485	34.27431	9.45		theta	0.0882	10
1000000	34.27925	6				11
		5		ux	0.609665	
expected		5		Vx	0.378349	
5.27925		4.5		z0	-1.48056	
11.32719	0.039963	4				1
4.823501	1.652774	4		p0	0.069361	2
4.6241	2.46463	3				3
3.652799	0.116663	3		S*	32.23593	4
2.38463	0.803982	3				5
1.292068	0.38788	2.75				6
0.583208	0.297862	2.5		lambda	59.82329	7
		2				
		2				
		2				
		1.5				
chi-square	5.763756	1				
df	4	1				
		1				
		1				
		1				
		1				

log normal

			upper bound	logUB	StandUB	sum(exp.s p)		
25			0.5	-0.30103	-1.93393	0.682132		
345.3		1	2.5	0.39794	-0.7156	6.089754		
		2	4.5	0.653213	-0.27064	10.10161		
0.844653		3	8.5	0.929419	0.210796	14.98493		
0.536379		4	16.5	1.217484	0.712907	19.57103		
0.287703		5	32.5	1.511883	1.226059	22.85483		
		6	64.5	1.80956	1.744923	24.64203		
-0.30103		7	128.5	2.108903	2.266692	25.38154		
0.219187		8	256.5	2.409087	2.789928	25.61443		
y z tabuliek		9	512.5	2.709694	3.313899	25.67032		
0.03157		10	1024.5	3.010512	3.838239	25.68054		
		11	viac	viac	1000000	25.68213		
0.808483								
0.329141				observed	expected			
-1.93393			0.5	-	0.682132			
		1	2.5	7	5.407622	0.468906		
0.026561		2	4.5	0	4.011859	4.011859		
		3	8.5	6	4.883317	0.255355		
25.68213		4	16.5	7	4.586099	1.270561		
		5	32.5	1	3.283801	1.588326		
		6	64.5	4	1.787199	2.739757		
47.88056		7	128.5	0	0	0		
					chi-square	10.33476		
				n_clas-3	df	3		

log normal

upper bound	logUB	StandUB	sum(exp.s p)			Devínska Nová Ves	
0.5	-0.30103	-1.62182	1.10642			1994	S
2.5	0.39794	-0.40296	7.249847			39	N
4.5	0.653213	0.042187	10.90833			24	
8.5	0.929419	0.523835	14.77035			23.5	priemer
16.5	1.217484	1.026163	17.88964			15	sm.odch.
32.5	1.511883	1.539536	19.80127			8	sm.odch2
64.5	1.80956	2.058624	20.68925			7	
128.5	2.108903	2.580618	21.00234			7	x0
256.5	2.409087	3.104079	21.08628			6.5	gama
512.5	2.709694	3.628276	21.10341			6	podľa gam
1024.5	3.010512	4.152842	21.10607			6	theta
viac	viac	1000000	21.10642			4	
						4	ux
	observed	expected				3	Vx
0.5	-	1.10642				2	z0
2.5	6	6.143427	0.003348			2	
4.5	4	3.658486	0.03188			2	p0
8.5	3	3.862015	0.192405			2	
16.5	4	3.119297	0.248658			2	S*
32.5	1	1.911623	0.434739			2	
64.5	2	0.887982	1.392576			1	
128.5						1	lambda
						1	
						1	
		chi-square	2.303606				
	n_clas-3	df	3				

log normal

sum(exp.s p)		Šenkvice 1				
2.226398		1995		S	20	
10.21875		33		N	131.5	1
14.18551		20				2
18.08375		18		priemer	0.529171	3
21.09454		15		sm.odch.	0.481806	4
22.91633		10		sm.odch2	0.232137	5
23.78131		7				6
24.10439		4		x0	-0.30103	7
24.19953		4		gama	0.336804	8
24.22166		4		podľa gamy z tabuliek		9
24.22573		2		theta	0.1473	10
24.2264		2				11
		2		ux	0.406883	
		2		Vx	0.333661	
		2		z0	-1.22554	
7.32E-06		1.5				1
0.975139		1		p0	0.110186	2
0.311388		1				3
1.314268		1		S*	22.47662	4
0.370706		1				5
0.021079		1				6
				lambda	46.65076	7
2.992585						
3						

log normal

sum(exp.s p)		Šenkvice 2				
2.282205		1997		S	20	
9.808837		34		N	183.8	1
13.40644		29				2
16.88534		20		priemer	0.684499	3
19.53981		19.5		sm.odch.	0.519175	4
21.13448		19		sm.odch2	0.269542	5
21.89027		10				6
22.17366		9.8		x0	-0.30103	7
22.25793		9.5		gama	0.277516	8
22.27783		7.5		podľa gamy z tabuliek		9
22.28157		7.5		theta	0.07507	10
22.2822		4				11
		2		ux	0.610515	
		2		Vx	0.342455	
		2		z0	-1.55767	
0.288417		2				1
0.709452		2		p0	0.059655	2
0.62869		1				3
0.682031		1		S*	21.2688	4
0.221758		1				5
2.048279		1				6
				lambda	40.96655	7
4.578627						
3						

log normal

upper bound	logUB	StandUB	sum(exp.s p)		Šamorín1	1996		
0.5	-0.30103	-1.55767	1.2688			38		S
2.5	0.39794	-0.36325	7.618646			27		N
4.5	0.653213	0.072962	11.25294			18		
8.5	0.929419	0.544951	15.03931			15		priemer
16.5	1.217484	1.037204	18.0823			11		sm.odch.
32.5	1.511883	1.540282	19.95554			8		sm.odch2
64.5	1.80956	2.048959	20.83847			8		
128.5	2.108903	2.560485	21.15764			7		x0
256.5	2.409087	3.073448	21.2463			6		gama
512.5	2.709694	3.587132	21.26524			5		podľa gam
1024.5	3.010512	4.101178	21.26836			5		theta
viac	viac	1000000	21.2688			5		
						5		ux
	observed	expected				5		Vx
0.5	-	1.2688				4		z0
2.5	9	6.349846	1.106061			4		
4.5	1	3.634294	1.90945			3		p0
8.5	2	3.786366	0.842788			3		
16.5	3	3.042995	0.000607			3		S*
32.5	4	1.873239	2.414594			2		
64.5	1	0.882929	0.015523			1		
128.5						1		lambda
						1		
						1		
						1		
		chi-square	6.289024					
	n_clas-3	df	3					

log normal

sum(exp.sp)	Šamorín1	1999					
1.040212		36		S	25		
8.621927		33		N	228		1
13.27895		28					2
17.96389		28		priemer	0.682126		3
21.37972		19		sm.odch.	0.504184		4
23.16186		11		sm.odch2	0.254202		5
23.8253		10					6
24.00165		8		x0	-0.30103		7
24.03517		7		gama	0.262987		8
24.03973		6		podľa gamy z tabuliek			9
24.04018		6		theta	0.06163		10
24.04021		5					11
		5		ux	0.621535		
		4		Vx	0.313773		
		4		z0	-1.64698		
0.044633		4					1
0.02526		3		p0	0.049781		2
0.021187		3					3
0.586843		2		S*	26.30972		4
2.760083		1					5
		1					6
		1		lambda	52.18274		
		1					
		1					
		1					
3.438005							
2							

log normal

upper bound	logUB	StandUB	sum(exp.sp)	Šamorín1	2000		
0.5	-0.30103	-1.64698	1.309721		45		S
2.5	0.39794	-0.39917	9.073844		37		N
4.5	0.653213	0.056552	13.74812		28		
8.5	0.929419	0.549642	18.64616		23		priemer
16.5	1.217484	1.063902	22.52936		19		sm.odch.
32.5	1.511883	1.58947	24.83698		13		sm.odch2
64.5	1.80956	2.120888	25.86336		9		
128.5	2.108903	2.655282	26.20548		7		x0
256.5	2.409087	3.191177	26.29108		6		gama
512.5	2.709694	3.727826	26.30718		6		podľa gamy z tak
1024.5	3.010512	4.264853	26.30946		6		theta
viac	viac	1000000	26.30972		5		
					5		ux
	observed	expected			5		Vx
0.5	-	1.309721			4		z0
2.5	7	7.764123	0.075203		3		
4.5	5	4.674277	0.022698		2		p0
8.5	6	4.898038	0.24792		1		
16.5	2	3.883206	0.913282		1		S*
32.5	3	2.307612	0.207748		1		
64.5	2	1.026385	0.923557		1		
					1		lambda
					1		
					1		
					1		
					1		
		chi-square	2.390407				
	n_clas-3	df	3				

log normal

sum(exp.sp)	Šamorín2	1999					
1.417605		17		S	20		
8.424202		12		N	73		1
12.56659		8					2
17.05373		4		priemer	0.376472		3
20.86435		4		sm.odch.	0.376751		4
23.38493		4		sm.odch2	0.141941		5
24.68318		3					6
25.20469		3		x0	-0.30103		7
25.36837		3		gama	0.309234		8
25.40856		3		podľa gamy z tabuliek			9
25.41629		2		theta	0.10885		10
25.41761		2					11
		1		ux	0.302726		
		1		Vx	0.191904		
		1		z0	-1.37822		
6.21E-06		1					1
0.315049		1		p0	0.084068		2
1.407238		1					3
0.860319		1		S*	21.83567		4
0.107517		1					5
2.230689							6
				lambda	57.95783		
4.920818							
3							

broken stick

	Dunajská Lužná			observed	expected			Dunajská Lužná
	1992	1	2.5	12	4.672052	11.49363		1993
		2	4.5	2	3.907127	0.930897		
		3	8.5	8	5.986234	0.67743		
		4	16.5	3	7.028696	2.309161		
		5	32.5	1	4.862846	3.068487		
		6	64.5	2	1.192462	0.546866		
		7	128.5	1	0.036945	25.10409		
		8	256.5	0	6.25E-06	6.25E-06		
		9	512.5	0	-0.00067	-0.00067		
		10	1024.5	0				
					chi-square	44.1299		
					df	8 (6)		
		S		29				
		N		304.5				

broken stick

		observed	expected			Dunajská Lužná 1994		
1	2.5	10	4.432755	6.992088			1	2.5
2	4.5	7	3.769691	2.768104			2	4.5
3	8.5	3	5.921331	1.44126			3	8.5
4	16.5	5	7.308469	0.729158			4	16.5
5	32.5	3	5.586911	1.197819			5	32.5
6	64.5	1	1.669249	0.268321			6	64.5
7	128.5	1	0.078658	10.79196			7	128.5
8	256.5	0	4.73E-05	4.73E-05			8	256.5
9	512.5	0	1.07E-08	1.07E-08			9	512.5
			chi-square	24.18876				
			df	8 (6)				
	S	30					S	
	N	348.1					N	

broken stick

observed	expected				Galanta			observed
7	3.145798	4.722133				1	2.5	6
0	2.75078	2.75078				2	4.5	4
6	4.501811	0.498593				3	8.5	2
7	6.024653	0.157901				4	16.5	7
1	5.386903	3.572538				5	32.5	1
4	2.156057	1.577012				6	64.5	1
0	0.174482	0.174482				7	128.5	0
0	0.000352	0.000352				8	256.5	0
0	-6.9E-07	-6.9E-07						
	chi-square	13.45379						
	df	8 (5)						
25						S		21
345.3						N		187

broken stick

expected			Čierna Voda		observed	expected	
3.859409	1.187262			1	2.5	6	3.440784 1.903515
3.141113	0.234849			2	4.5	4	2.845522 0.468392
4.6173	1.483607			3	8.5	3	4.28273 0.384193
4.969643	0.829507			4	16.5	4	4.831315 0.143043
2.847589	1.198763			5	32.5	1	3.035982 1.365364
0.456523	0.646993			6	64.5	2	0.581176 3.463769
0.004443	0.004443			7	128.5	0	0.008368 0.008368
-5.1E-08	-5.1E-08			8	256.5	0	3.47E-08 3.47E-08
chi-square	5.585423					chi-square	7.736644
df	7 (5)					df	7 (5)
				S		20	
				N		192	

broken stick

	Devínska Nová Ves 1994			observed	expected			Devínska Nová Ves 1995
		1	2.5	10	4.975035	5.075395		
		2	4.5	3	3.866009	0.193991		
		3	8.5	6	5.307977	0.090222		
		4	16.5	1	4.98722	3.187732		
		5	32.5	2	2.188452	0.016228		
		6	64.5	1	0.208676	3.000801		
		7	128.5	0	0.000586	0.000586		
		8	256.5	0	-1.2E-05	-1.2E-05		
		9	512.5	0				
					chi-square	11.56494		
					df	7 (5)		
		S		23				
		N		169				

broken stick

		observed	expected			Šenkvice 1		
1	2.5	8	4.074366	3.782333		1995	1	2.5
2	4.5	2	3.308208	0.517322			2	4.5
3	8.5	5	4.846856	0.004839			3	8.5
4	16.5	5	5.185898	0.006664			4	16.5
5	32.5	1	2.944608	1.284211			5	32.5
6	64.5	1	0.468105	0.604376			6	64.5
7	128.5	0	0.00465	0.00465			7	128.5
8	256.5	0	3.87E-09	3.87E-09			8	256.5
9	512.5	0					9	512.5
							10	1024.5
			chi-square	6.204395				
			df	7 (5)				
	S	22						S
	N	194.5						N

broken stick

observed	expected			Šenkvice 1			observed	expected
11	4.711799	8.392012		1996	1	2.5	12	5.702409
3	3.564649	0.089442			2	4.5	4	4.151694
1	4.698203	2.911051			3	8.5	2	5.174068
2	4.049454	1.037241			4	16.5	1	3.994952
2	1.473225	0.188356			5	32.5	3	1.177708
1	0.090702	9.115797			6	64.5	0	0.048111
0	5.44E-05	5.44E-05			7	128.5	0	9.62E-06
0	1.000054	1.000054			8	256.5	0	
0					9	512.5		
0								
	chi-square	22.73401						chi-square
	df	7 (5)						df
20						S	22	
131.5						N	128.5	

broken stick

		Šenkvice 2			observed	expected		
6.954896		1996	1	2.5	9	3.715208	7.517484	
0.005543			2	4.5	2	3.017321	0.343001	
1.947154			3	8.5	2	4.420196	1.325133	
2.245268			4	16.5	4	4.720733	0.110037	
2.81967			5	32.5	1	2.654248	1.031003	
0.048111			6	64.5	2	0.404861	6.284795	
9.62E-06			7	128.5	0	0.003314	0.003314	
			8	256.5	0	8.32E-06	8.32E-06	
			9	512.5				
14.02065						chi-square	16.61478	
6 (4)						df	7 (5)	
				S	20			
				N	175.5			

broken stick

Šenkvice 2 1997			observed	expected				
	1	2.5	9	3.571977	8.248496			
	2	4.5	1	2.928754	1.270196			
	3	8.5	2	4.351849	1.270999			
	4	16.5	3	4.783471	0.66495			
	5	32.5	4	2.851484	0.462597			
	6	64.5	1	0.490181	0.530243			
	7	128.5	0	0.005422	0.005422			
	8	256.5	0	4.45E-07	4.45E-07			
	9	512.5						
				chi-square	12.4529			
				df	7 (5)			
		S	20					
		N	183.8					

broken stick

Šamorín1 1996			observed	expected			Šamorín1 1997	
	1	2.5	6	5.341835	0.081092			1
	2	4.5	5	4.163202	0.168195			2
	3	8.5	9	5.743715	1.846085			3
	4	16.5	2	5.458507	2.191308			4
	5	32.5	2	2.465715	0.087962			5
	6	64.5	1	0.254653	2.181559			6
	7	128.5	0	0.000974	0.000974			7
	8	256.5	0	-1.2E-09	-1.2E-09			8
				chi-square	6.557176			
				df	7(5)			
		S	25					
		N	187					

broken stick

	observed	expected			Šamorín1			observed
2.5	7	4.927458	0.871734		1999	1	2.5	7
4.5	5	3.840513	0.35006			2	4.5	5
8.5	5	5.296411	0.016588			3	8.5	6
16.5	2	5.020949	1.817611			4	16.5	2
32.5	4	2.242943	1.376427			5	32.5	3
64.5	0	0.221784	0.221784			6	64.5	2
128.5	0	0.000687	0.000687			7	128.5	0
256.5	0	-5.5E-06	-5.5E-06			8	256.5	0
		chi-square	4.654886					
		df	7 (4)					
S	23					S	25	
N	171					N	228	

broken stick

expected			Šamorín1			observed	expected	
4.5274	1.350389		2000	1	2.5	10	4.801863	5.627112
3.692034	0.46337			2	4.5	2	3.895707	0.922478
5.447098	0.056122			3	8.5	7	5.704689	0.294114
5.92139	2.596907			4	16.5	2	6.112163	2.766596
3.495011	0.07011			5	32.5	3	3.511728	0.074569
0.614855	3.120454			6	64.5	2	0.58959	3.37397
0.008542	0.008542			7	128.5	0	0.007547	0.007547
5.68E-08	5.68E-08			8	256.5	0	4.47E-08	4.47E-08
chi-square	7.665894						chi-square	13.06639
df	7 (5)						df	7 (5)
					S	26		
					N	232		

broken stick

	Šamorín1 2001			observed	expected			Šamorín2 1999
		1	2.5	7	3.741875	2.836913		
		2	4.5	3	3.154171	0.007536		
		3	8.5	7	4.887382	0.9132		
		4	16.5	2	5.859372	2.542039		
		5	32.5	2	4.198336	1.151094		
		6	64.5	3	1.078256	3.425067		
		7	128.5	0	0.034034	0.034034		
		8	256.5	0	3.72E-06	3.72E-06		
					chi-square	10.90989		
					df	7 (5)		
		S		24				
		N		260				

broken stick

		observed	expected			Šamorín2		
1	2.5	10	7.218193	1.072076		2000	1	2.5
2	4.5	7	4.33346	1.640821			2	4.5
3	8.5	2	4.055585	1.041879			3	8.5
4	16.5	1	1.743828	0.317279			4	16.5
5	32.5	0	0.152793	0.152793			5	32.5
6	64.5	0	0.000273	0.000273			6	64.5
			chi-square	4.225121				
			df	5 (3)				
	S	20					S	
	N	73					N	

broken stick

observed	expected	
11	7.14939	2.073911
3	3.933795	0.221662
4	3.223977	0.186792
0	1.043329	1.043329
0	0.047316	0.047316
0	6.84E-06	6.84E-06
	chi-square	3.573017
	df	5 (2)
18		
56		