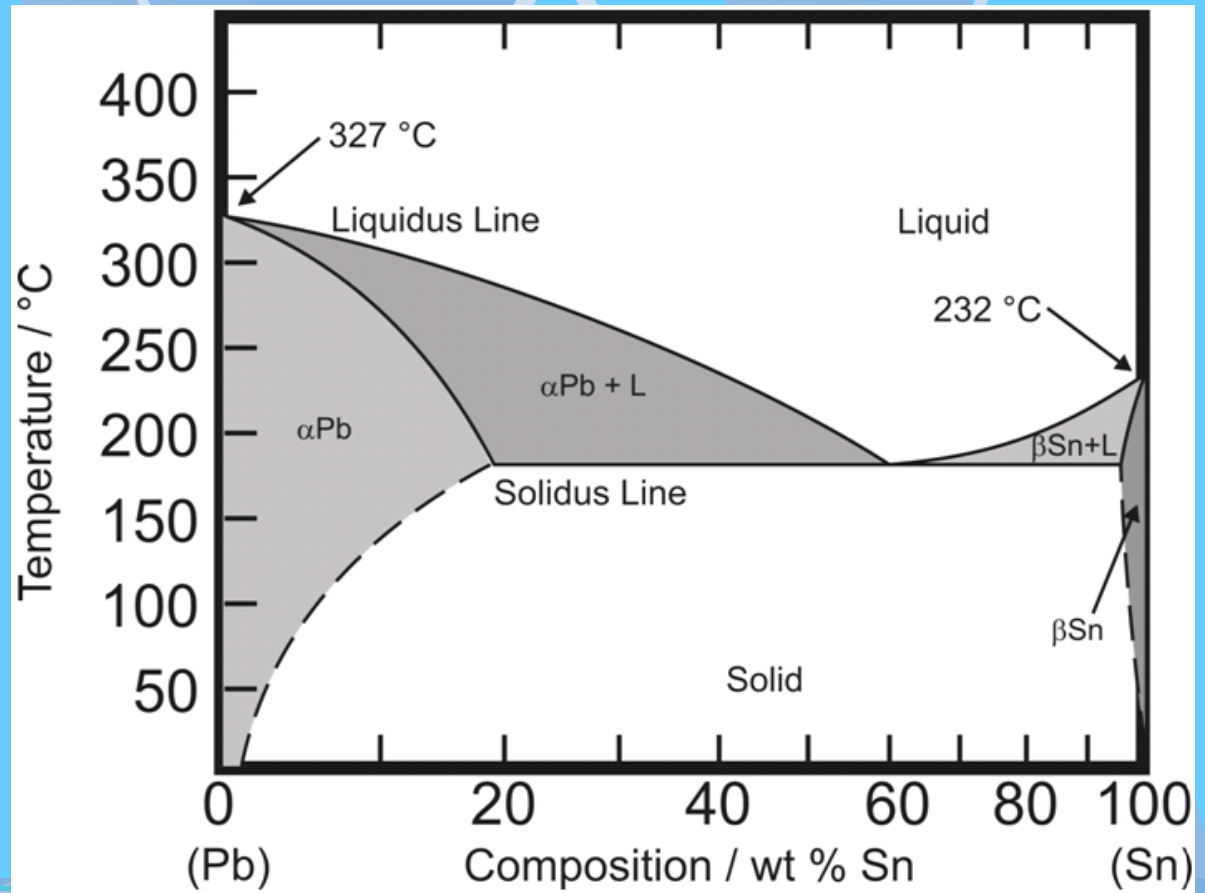


Fázové diagramy binárních soustav



Odmíslení a spinodální rozpad

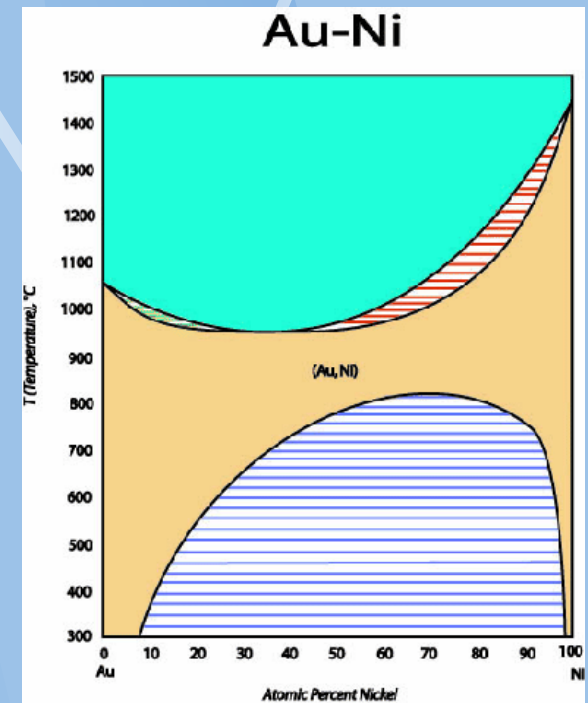
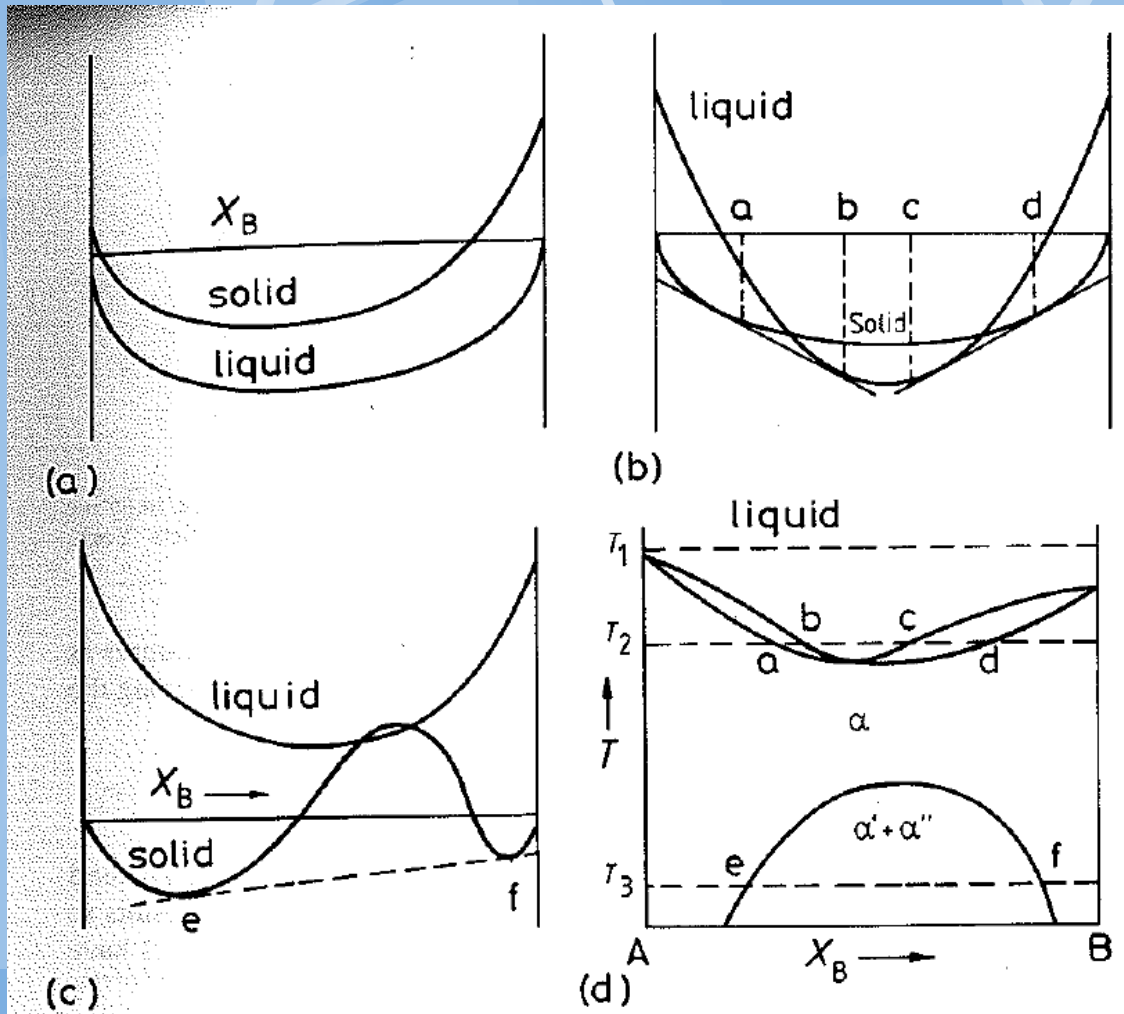


Fig. 1.30 The derivation of a phase diagram where $\Delta H_{\text{mix}}^S > \Delta H_{\text{mix}}^L = 0$. Free energy v. composition curves for (a) T_1 , (b) T_2 , and (c) T_3 .

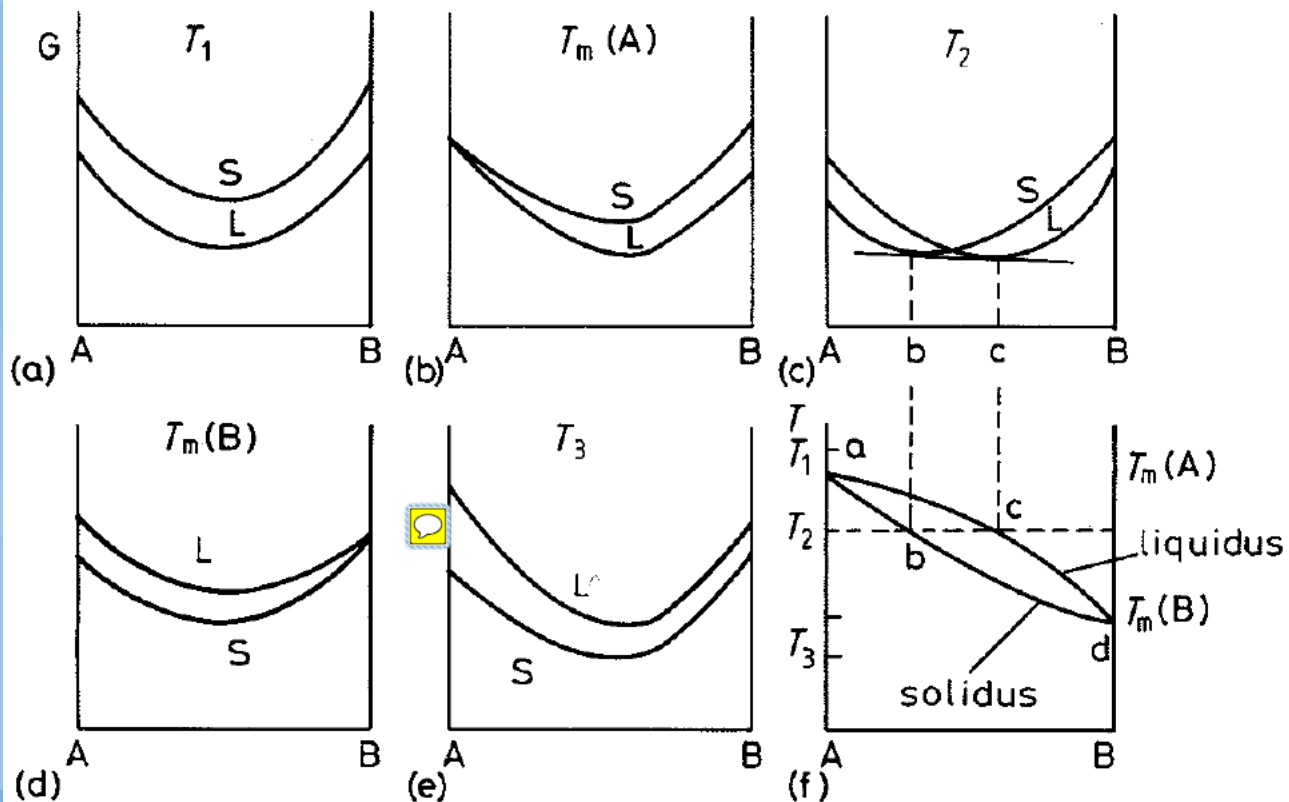


Fig. 1.29 The derivation of a simple phase diagram from the free energy curves for the liquid (L) and solid (S).

Aktivita složek v binárních diagramech

$$a_A^\alpha = a_A^\beta, \quad a_B^\alpha = a_B^\beta \quad (1.47)$$

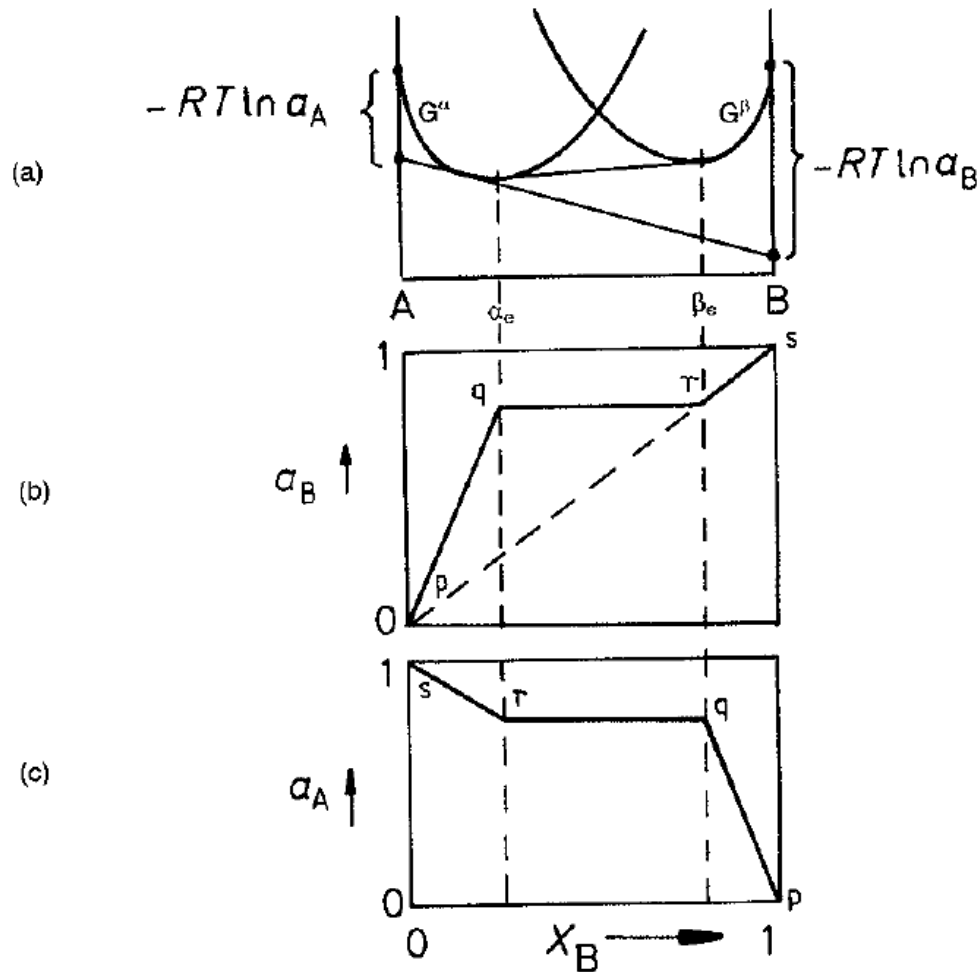


Fig. 1.28 The variation of a_A and a_B with composition for a binary system containing two ideal solutions, α and β .

Diskuse

<http://www.ironcarbon.com/product.aspx?id=5>

