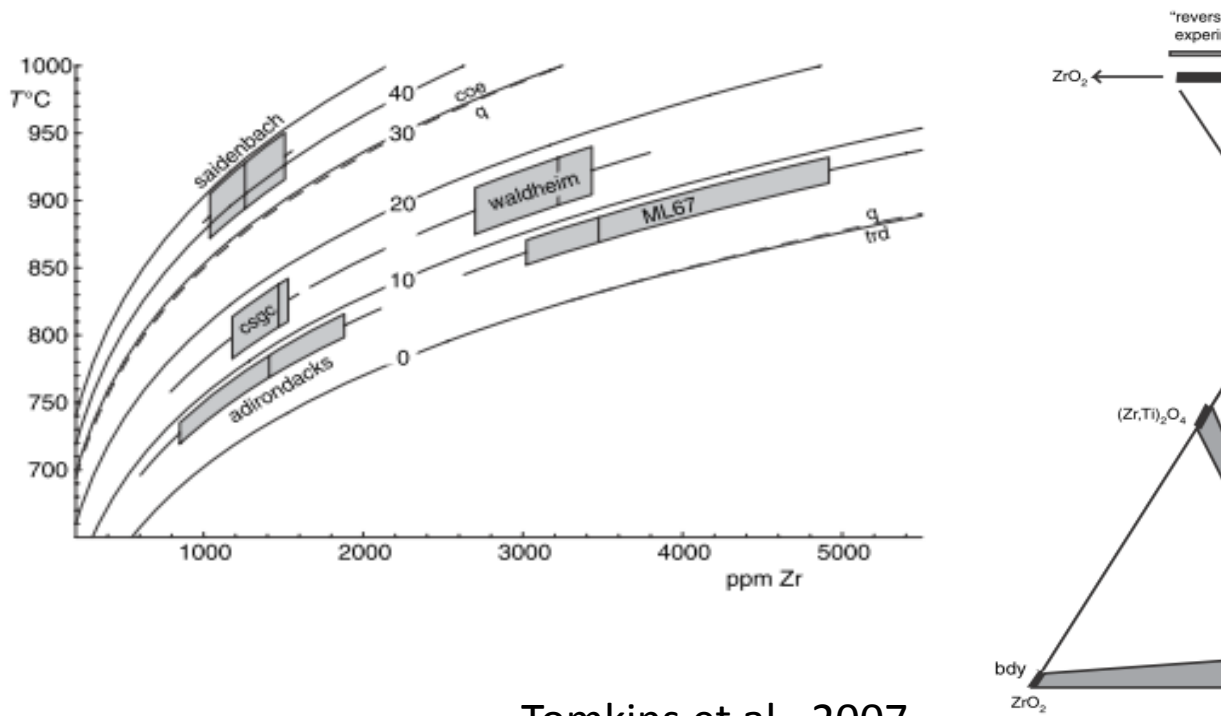


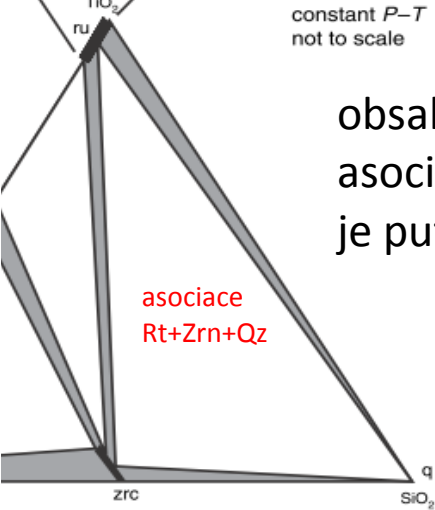
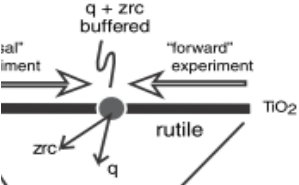
Rozpustnost stopových prvků v (horninotvo

Zr v rutilu



Tomkins et al., 2007

rných) minerálech



obsah Zr v rutilu v asociaci s Zrn+Qz je pufrován

asociace
Rt+Zrn+Qz

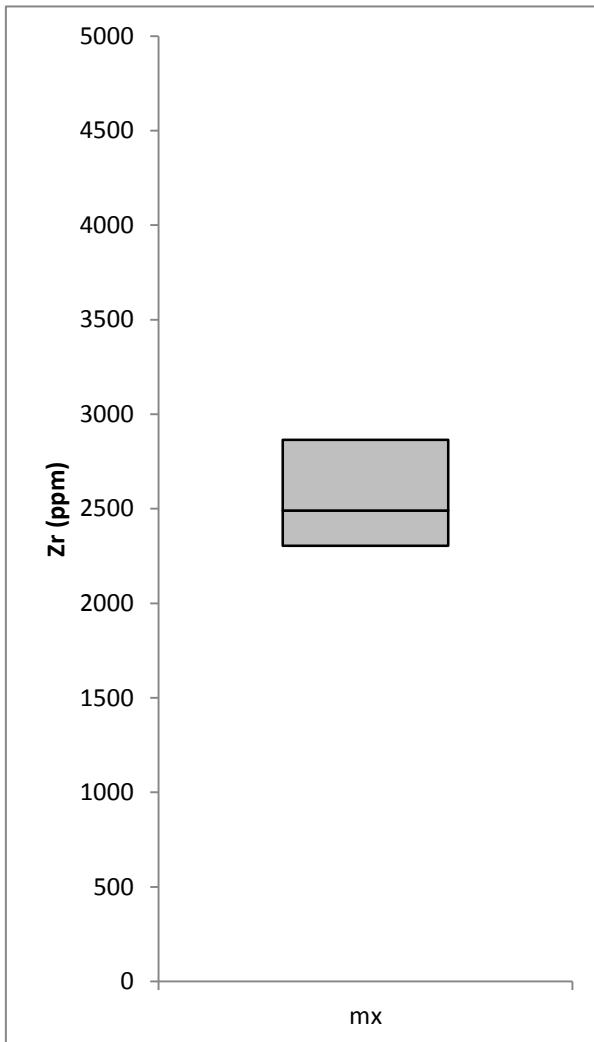
Obsah Zr v rutilech z granulitů

(termometr podle Tomkins et al. 2007)

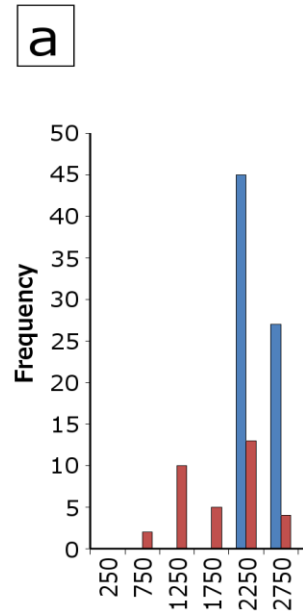
	Zr	P (kbar)	T (°C)	T (°C)
1 / 1 .	2517	14	881	923
2 / 1 .	2251	14	867	908
3 / 1 .	2428	14	876	918
4 / 1 .	3035	14	904	948
5 / 1 .	2391	14	874	916
6 / 1 .	2221	14	866	907
7 / 1 .	2251	14	867	908
8 / 1 .	2110	14	859	900
11 / 1 .	2939	14	900	943
9 / 1 .	3605	14	927	972
13 / 1 .	3627	14	928	972
14 / 1 .	3094	14	907	950
15 / 1 .	2251	14	867	908
16 / 1 .	2710	14	890	932
17 / 1 .	2517	14	881	923
18 / 1 .	2391	14	874	916
19 / 1 .	2413	14	876	917
20 / 1 .	3198	14	911	955
21 / 1 .	3887	14	937	982
22 / 1 .	3450	14	921	965
24 / 1 .	2872	14	897	940
25 / 1 .	2784	14	893	936
26 / 1 .	2821	14	895	938
27 / 1 .	2776	14	893	936
29 / 1 .	3998	14	941	986
30 / 1 .	2806	14	894	937
31 / 1 .	2710	14	890	932
32 / 1 .	2354	14	873	914
33 / 1 .	2480	14	879	921
40 / 1 .	2754	14	892	935
41 / 1 .	2458	14	878	920
42 / 1 .	2747	14	892	934
43 / 1 .	2732	14	891	934
44 / 1 .	2554	14	883	925
45 / 1 .	3228	14	912	956
46 / 1 .	3272	14	914	958
47 / 1 .	3265	14	914	958
48 / 1 .	2147	14	861	902
49 / 1 .	2628	14	886	928
50 / 1 .	2487	14	879	921
51 / 1 .	2251	14	867	908
52 / 1 .	2376	14	874	915
53 / 1 .	2369	14	873	915
54 / 1 .	2428	14	876	918
55 / 1 .	2865	14	897	940
56 / 1 .	2347	14	872	914

57 / 1 .	2228	14	866	907
58 / 1 .	2095	14	859	899
59 / 1 .	2258	14	868	909
60 / 1 .	2095	14	859	899
61 / 1 .	2199	14	864	905
73 / 1 .	4390	14	954	1000
74 / 1 .	4272	14	950	996
75 / 1 .	2710	14	890	932
76 / 1 .	4057	14	943	989
86 / 1 .	2473	14	879	920
87 / 1 .	2961	14	901	944
88 / 1 .	2658	14	888	930
89 / 1 .	2125	14	860	901
90 / 1 .	2110	14	859	900
91 / 1 .	2384	14	874	916
92 / 1 .	2473	14	879	920
93 / 1 .	2228	14	866	907
94 / 1 .	2317	14	871	912
95 / 1 .	2310	14	870	912
96 / 1 .	2214	14	865	906
97 / 1 .	2458	14	878	920
98 / 1 .	2288	14	869	910
99 / 1 .	2384	14	874	916
100 / 1 .	2828	14	895	938
101 / 1 .	2865	14	897	940
102 / 1 .	2784	14	893	936
103 / 1 .	2761	14	892	935
104 / 1 .	2672	14	888	931
105 / 1 .	2480	14	879	921
106 / 1 .	2902	14	899	942
107 / 1 .	2251	14	867	908
108 / 1 .	2191	14	864	905
109 / 1 .	2191	14	864	905
114 / 1 .	2332	14	871	913
115 / 1 .	2273	14	868	910
116 / 1 .	2028	14	855	895
7 / 1 .	2495	14	880	922
8 / 1 .	2539	14	882	924
9 / 1 .	2421	14	876	918
25 / 1 .	3620	14	927	972
26 / 1 .	3154	14	909	953
171 / 1 .	2917	14	899	942
průměr	2672			
medián	2491			

Box plot:



Haifler a Kotková, 2016



	mx
MIN	2028
Q1	2304
MEDIAN	2491
Q3	2865
MAX	4390

delta	mx
MIN	2028
Q1	276
MEDIAN	187
Q3	374
MAX	1525

	mx
MIN	855
Q1	870
MEDIAN	880
Q3	897
MAX	954

delta	mx
MIN	855
Q1	15
MEDIAN	10
Q3	17
MAX	57

