

# **The Deblin(sko)-locality: physical landscape**

Alois Hynek

Department of Geography, Faculty of Science, Masaryk University

Kotlarska 2, 611 37 Brno

hynek@sci.muni.cz

**Abstract:** In the frame of international project LENSUS the Deblin-locality served as a pilot area for sustainability education. The project also included physical landscape study based on analysis of cartographical data sources and field survey. We succeeded in the construction of composite physico-geographical spatial units using intensive research methods and concerned on studying materiality of physical landscape spatial units. As well as intensive social research provided remarkable results in university-basic school-families cooperation when the households expressed deep interest in the topic of sustainability and community is still living with project. (Grand)parents were surprised by the practices of the project and welcome the results for their living.

**Key words:** physical landscape, components and composite spatial units, materiality, intensive study

## **INTRODUCTION**

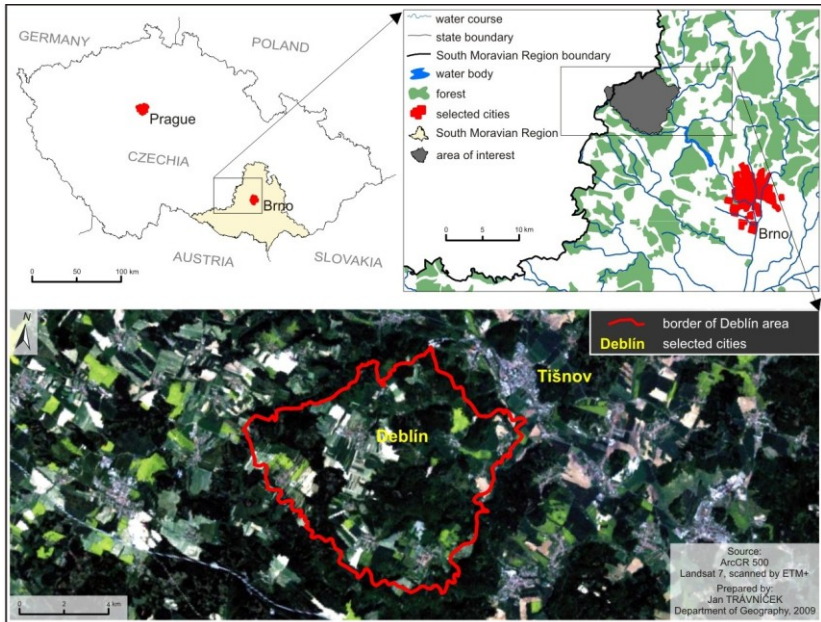
Physical landscape is an evergreen topic in tradition of continental geography. Not so in the Anglo-Saxon tradition. As WYLIE ( 2007, 8, 14) mentions, landscape is a ways of seeing and he splits landscape into 'material and mental aspects, objective and subjective, science and art, nature and culture'. For my Dept. of Geography a landscape has been involved in physical geography since 1973 and linked with ecology/environmental studies. Since 1982 when IALE ( International Association of Landscape Ecology) has been established in Slovakia ( the author was one of co-founders) it is landscape ecology – a transdisciplinary approach to landscape as a set of landscape ecosystems that plays the key role also in applications. Physical geography is a starting point to physical landscape study including all material component – landforms/lithology, climate, hydro-cycle, soil cover, biocenoses and their composite spatial units, assemblages in the sense of DELEUZE & GUATTARI ( 1987,2009). An ecosystem concept creates the main part of another project – sustainability. We accept it with respect to Millennium Ecosystem Assessment

(ALCAMO et al., 2003). An ecosystem is understood as capital, providing services to humus and also other ecosystems.

Landscape, including physical one, is a form of spatiality intended to humans/nature interactions, in the case of physical landscape the interactions between physical components of it (HYNEK 2009).

The Deblin-locality, from a geomorphological point of view, is a remnant of faulted dome with contemporary shape of 'horseshoe' – an elevation with its base at 240 m above sea level and the summit at 540 m a.s.l. It is comprised of a very wide collection of metamorphic and sedimentary rocks covered with earth/slope sediments and soil cover consisting of cambisols, (para)luvisols, pseudogleys and leptosols. The topoclimate is mildly warm and moist with sunny and shady spots. At the foot of the dome five streams can be seen flowing around it with average discharge up to  $8 \text{ m}^3 \cdot \text{s}^{-1}$ . Their autochthonous tributaries from the Deblin dome are strongly influenced by the dissected terrain. The former *Ulmi fraxineta carpini*, *Carpini querceta*, *Fagi querceta* + *typica* and *Querci fageta* were almost de/reterritorialized into cultural forests, cultivated fields, orchards, meadows and villages/country town settlements. It includes 9 municipalities with 3,156 inhabitants in an area of  $56.8 \text{ km}^2$  as a part of the town region of Tisnov, a marginal suburban town of Brno. Deblin is a part of Tisnov-region (Tisnov-town population: 8,704 inhabitants) and the city of Brno (population: 404,067 inhabitants). Large-scale agriculture (since the 1950s) and Saxon-type forestry (since the 1750s) strongly influenced rural landscaping, causing biodiversity depletion, a monotonous landscape character, accelerated anthropogenous soil erosion and run-off with impacts on the human environment (HYNEK A. et al., 2010).

Fig.2: The Deblin/locality –location.



Source: HYNEK et al., 2010.

## METHODOLOGY

Geographical study of physical landscape is zooming its attention on spatiality of its components using data from non-geographical disciplines and its field/study - mapping spatial units, as far as possible at the local/topic level , molecular in the sense of DELEUZE & GUATTARI (2009, 229). There is very instructive concept of physical landscape study presented by PREOBRAZHENSKIY, 1984:

Fig.2: Mono/polysystems models of landscape.

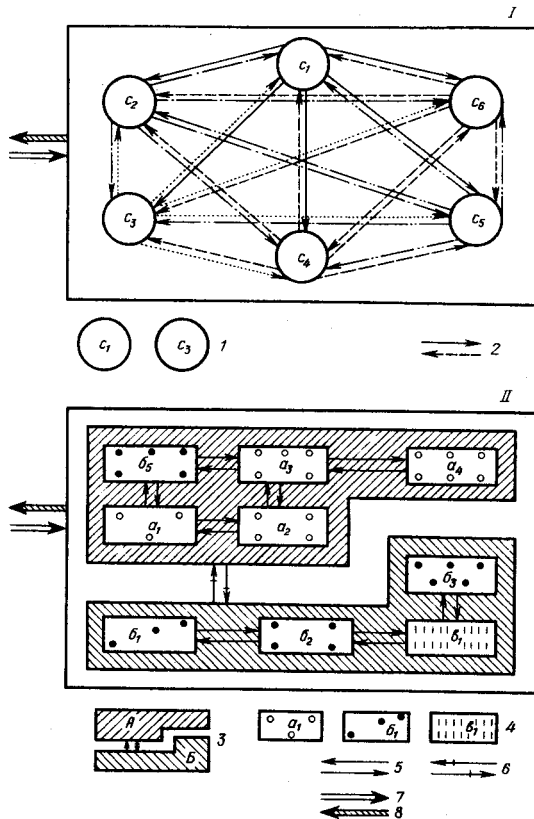


Fig.1. MODELS - CONCEPTIONS OF A LANDSCAPE (After Preobrazhenskiy, 1967)

I - monosystems model, II - polysystems model.

1 - components; 2 - relation of components; 3 - geosystems of "n" rank; 4 - geosystems of "n-1" rank; 5 - relation of geosystems of "n-1" rank; 6 - relation of geosystems of "n" rank; 7, 8 - relations with environment.

Source: PREOBRAZHENSKIY, 1984, 18.

Another up-to-date unsurpassed performance in landscape ecological mapping comes from HAASE (1984).

I agree with KOLEJKA (2011) who is strongly criticizing contemporary declined state of the Czech landscape study based on mechanistic manipulation with uncontrolled data though processed in advanced GIS technologies

however without understanding landscape reality. It could be add: landscape materiality. In this context we can follow new (critical) materialisms studies, e.g. COOLE and FROST ( eds. 2010), BENNETT (2010), BRYANT, SRNICEK and HARMAN ( 2011). The materiality studies are also based on intensive research methods. We must not forget the ecological materiality of the cities ( HEYNEN,KAIKA,SWYNGEDOUW 2006) and non-representational approaches in geography, opened by N. Thrift, the latest from ANDERSON and HARRISON (2010).

In the hands of advised specialist on GIS technologies, in the case of Deblin-locality it is PhD. student Jan Travnicek we jointly produced all the series of thematic maps covering physical landscape using critically the sources of various institutions starting with the scale 1:10,000 up to 1:50,000. This locality has its own thematic atlas! Not only maps of physical landscapes but also human/cultural geography ones (TROJAN and TRAVNICEK, 2011)

## **PHYSICAL LANDSCAPE COMPONENTS**

### **Landforms**

New development in the Czech geology offered more precise knowledge for study of landforms, different from contemporary views in the Czech geomorphology. It is a monograph of CHÁB et al. (2008) providing new spatiality of morphostructures in the Czech Massif, very welcome contribution for intensive study of landforms. Prevailing orientation of the Czech geomorphology on relief genesis has been changed here in favour for relief/terrain as factor influencing other physical components and human decisions ( transport, construction, agriculture, recreation, etc.). Relief/terrain is in that case interpreted as translator of matter/energy flows ( DYAKONOV, 1975). Very speculative debate on planation surfaces was omitted and more effort was paid to landforms applying approach of SPIRIDONOV (1975, 7) who recognized elementary surfaces a lines on landform bodies and eventually their groups.

We cannot forget the treatise of HRÁDEK (2000) and thesis of KUBALÍKOVÁ (2005) who contributed to terrain analysis, e.g. tectonic forms, karst, gully erosion, etc. We continued in identification of landforms as valleys (slopes, bottoms and edges), gorges, ridges, troughs, hills, step faults, (inclined) plains, terraces, basins, dells. These landforms are physical bodies covered with soils, vegetation, exposure to sun-rays, specific run-off, anabatic/katabatic winds. It is very important i physical landscape study. I must strongly evaluate the cartographic and GIS assistance of J.Trávníček who helped me with terrain morfology on his excellent thematic maps.

## Topoclimate

Less known in landscape practices, more frequent term is mesoclimate in the sense of Czech geographer E.QUITT. But he was also very active in local climate studies, he is the author of Topoclimatic map in the scale 1:50,000 covering 80% of the Deblin-locality. His topoclimatic analysis includes next attributes for the upper part of the Deblin-locality, QUITT (1994, 52):

### *Topoclimate of Highlands*

19 - topoclimate of peak parts distinctly protruding above the surroundings, 20 - topoclimate of convex formations merging with the surroundings (peak plane), 21 - ditto with the low loose housing, 22 - topoclimate of slopes under very good solar irradiation, 23 - ditto with a possibility of pronounced catabatic flow, 24 - topoclimate of slopes under normal solar irradiation, 25 - ditto with the low loose housing, 26 - ditto with a possibility of pronounced catabatic flow, 27 - topoclimate of slopes under minor solar irradiation, 28 - ditto with a possibility of pronounced catabatic flow, 29 - topoclimate of deeply incised valleys, 30 - ditto with the low loose housing, 31 - topoclimate of indented formations with pronounced local temperature inversions, 32 - ditto with the low loose housing, 33 - topoclimate of indented formations with less pronounced local temperature inversions, 34 - ditto with the low loose housing.

We completed this sheet and The Atlas of Deblin-locality is including in it, spatial data are also in the Table 1.

## Hydro-cycle

Water balance of Deblin-locality abounds in contrasts: summit planation surface is relatively dry, especially in vegetation season whereas on the margin border we can find watercourses with dominant the Svratka-river. Its discharge reaches average value  $8\text{m}^3\cdot\text{s}^{-1}$ , centennial:  $365\text{m}^3\cdot\text{s}^{-1}$ , the output from Deblin-locality into the Svratka-river is about 3 litres  $\cdot\text{km}^{-2}\cdot\text{s}^{-1}$ . The tributaries of the Svratka-river create in ground plan 'a wheel round the island'. The reason of relative drought of water balance is in the very thin layers of regolith covering basement crystalline rocks with limited retention of ground water. The water retention of ground crystalline rock is also very limited for deficiency in pores. We can describe the run-off process as accelerated, especially in deforested areas. However this process could be mitigated by collecting precipitation, not only rains but snow, too. If you have a roof with the surface of  $10\times 10$  metres and annual precipitation reaches 500 mm, you have almost  $50\text{m}^3$  of water at disposal.

## Soil cover

Traditional account of soils, very common not only in geography, can hardly be a real spatiality of soil cover including all soil taxons. We prefer the concept of FRIDLAND (1972,1975) who developer 'the structure of soil cover'. Accepting his ideas we submit the solution for Deblin-locality:

RANKER

lithic variations

catenas: ranker- colluvisol-lithosol

tachets: ranker-cambisol  
RENDZINA  
contrast mosaics: rendzina-lithosol-ranker-pararendzina  
PARARENDZINA  
contrast mosaics: pararendzina-rendzina-lithosol-ranker  
FLUVISOL  
palletes/spottinesses: fluvisol-gleysol  
PARALUVISOL/ LESSIVÉS-PARABRAUNERDE  
palletes/spottinesses: paraluvisol -luvisol-pseudogleysol  
mosaics: hnědozem-kambizem  
LUVISOL  
palletes/spottinesses: luvisol-paraluvisol-pseudogleysol  
CAMBISOL  
catenas: cambisol-ranker-litozem  
mosaics: cambisol-paraluvisol-luvisol  
PSEUDOGLEYSOL  
palletes/spottinesses: pseudogleysol-luvisol-paraluvisol  
GLEYSOL  
palletes/spottinesses: gleysol- fluvisol

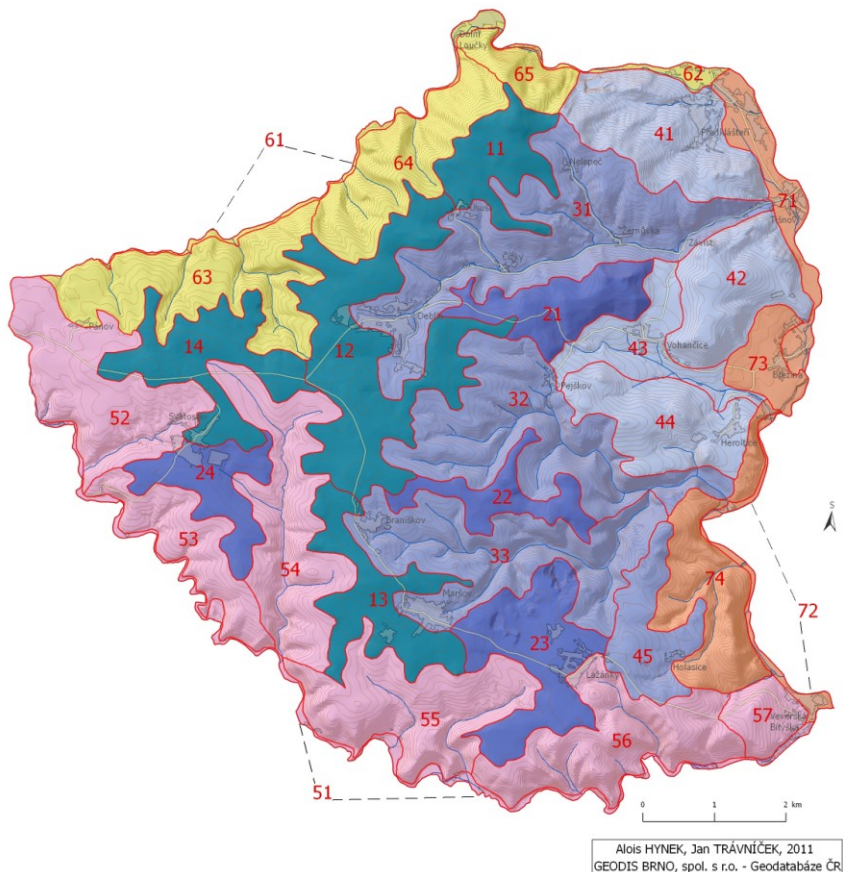
## **Phytogeoceneses**

Contemporary cultural landscapes are modifications of former physical ones transformed by humans. It is a serious problem to reconstruct the former vegetation before human impact, especially after process of deforestation. We also recognize potential vegetation – contemporary one in the case of absenting human impact. There is an option of realist approach using vast collection of data in the Czech forestry. The state has its own institution : The Institute of forests economic management (IFEM/ÚHÚL) in Brandýs n.L.-town. Searching for economically optimal composition of trees in the forest plantations edaphic conditions play the main role. The specialists do survey for edatops identification in the scale 1:10,000 and they have experience with choice of trees composition intended for edatops. For that reason their thematic maps present very advanced data for reconstruction of potential vegetation in the terms of phytogeoceneses. They are applied for the forested landscape of Deblín-locality ( see Table 1)

## **PHYSICAL LANDSCAPE COMPOSITE SPATIAL UNITS**

While in Slovak physical geography is complex physical geography quite common matter, Czech physical geography is very traditional, conservative in this topic. Not so Polish, German, Hungarian physical geographies. There are various systems of taxonomic physico-geographical complex/composite spatial units, we prefer as elementary unit the top and their groups –polytops associated in monomicrochores. The German equivalent for polytops is nanochores, Russian – фация (фация) eventually microchore/урочище.

Fig.3: Physical landscape monomicrochores in Deblín-locality.



Source: HYNEK, TRÁVNÍČEK, in SVOZIL, HYNEK, eds. 2011.

Legend:

1 – upper horseshoe plateau rim, 2 – inner middle ridges with scattered karst, 3 – trough valleys, 4 - lower plateau/steps/terraces/hills/basin with scattered karst, 5 – the Bílý potok-stream valley, 6 – Blahoňůvka/Libochovka/Loučka stress valleys, 7 – the Svratka-river valley

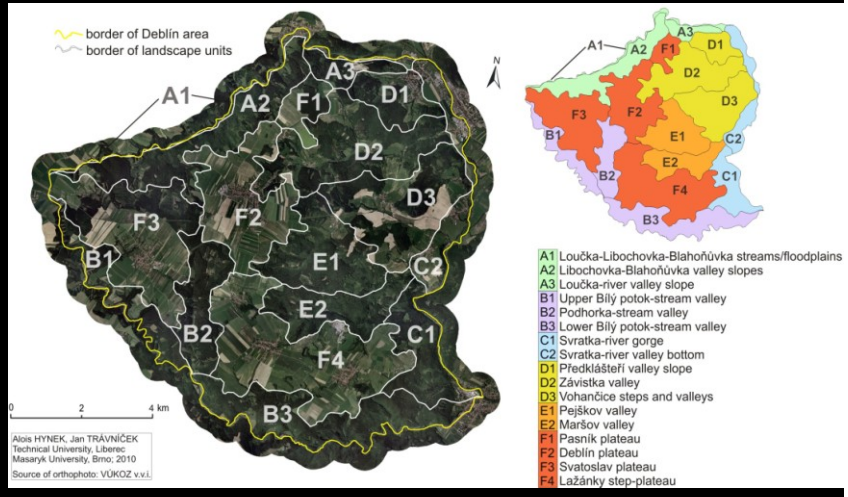
Another variant:

Fig.4: Physical landscape spatial units of Deblín-locality.



# Composite units of Deblín area (part 1)

version for local atlas for pupils in primary school



Source: HYNEK et al., 2010

And more detailed table:

Table 1: Physical landscape composite units in Deblin-locality.

Composite units of Deblín area (part 2)									
LF	RE	TC	HC	SC	SC	PV	AV	LU image	LU
A1	f LIG	▲ 0.3	D 2.1	F F	F F	meadows woods ruderal			foresty recreation
A2	d GrGrPh	▲ SR 3-5		L C M	F M	Fl-baikal forests			foresty recreation
A3	d GrGr	▲ D 1.52		L C M	F M	QF-j FG-b forests ruderal			foresty quarry
B1	d GrGrPh	▲ D 0.15		L C F	F F	QF-sk FG-kas forests ruderal			foresty agriculture
B2	d GrGrPh	▲ D 0.05		L C F	F F	Fl-kmo FG-ask forests			foresty
B3	d GrGrPh CoSo	▲ D 0.29		L C F	F F	QF-ibd FG-ak CO-iz forests			foresty recreation
C1	d GrGrCoSo MfCo	▲ D 6.63		L C F	F F	QF-skj forests			foresty recreation
C2	vt LIG	▲ E 7.94		F V	F V	FG-s CO-r QF- agri/vegetal ruderal			settlement transport
D1	i GrArCoLo	○ SR 2-3		M V	M V	QF-ib Fl-b forests ruderal			foresty settlement
D2	d GrArCo GrMfLo	▲ D 0.05		M L	M L	FG-akb QF-so Fl-d forests ruderal			rural
D3	d GrMfLo MfArCo	○ D 0.05		M L	M L	QF-ah FG-ekb CO-iz forests ruderal			rural
E1	d GrArArCo	▲ D 0.05		M L	M L	QF-ib Fl-bd FG-akc forests ruderal			rural
E2	d GrAr	▲ D 0.05		M L	M L	QF-akabd Fl-wed forests ruderal			rural quarry
F1	p GrGrPh	≡ SR 2-3		M L	M L	QF-akb forests agri			rural
F2	p FlGrDLS	≡ SR 2-3		V F	V F	FG-m QF-s Fl-s agri ruderal			rural centre
F3	p GrPhQu	≡ SR 2-3		V F	V F	Fl-hmkio QF-s agri ruderal			rural
F4	p GrMfDLS CoSo	≡ SR 2-3		V F	V F	QF-akabd Fl-d agri ruderal			rural

<b>Edaphic rows</b> a) stony b) nutrient c) colluvial d) eutabtic h) loamy i) compaq l) scree m) siliceous o) pseudogleyed s) fresh t) tepid w) fresh calcare x) erotham z) sturt	<b>Rocks, earths</b> AU apilite Ar arkose Ca conglomerate D delunium G gravels Gr gneiss Gr granite L loams Li limestone Lo loess Mb mantle Me metabasalt M marl Ph phyllite Qu quartzite S sands Sa sandstones
<b>Potential forest vegetation tiers</b> Co Carpin querceto FG Fagi querceto QF Quercif fageto Fl Fagella typica Utc Ulmi fraxineti carpin	<b>Soils in soil cover</b> C colluvial E rendzinas F fluvisols G gleys L leptosols M cambisols P pseudogleys V luvisols
<b>Columns in table</b> LF landforms IC topoclimates HC hydrocycle LU land use SC soil dominated PV potential/reconstructed vegetation AV actual vegetation RE rocks, earths	<b>Landforms</b> f floodplains, valley floor v open wide valleys s steep step-like valley slopes t steep-like rolling plateau d deep narrow valleys with steep slopes r ravines p rolling plateau
<b>Topoclimates (Quil E. 1987)</b> ≡≡≡ high thermal amplitude, ailing, vapouring ≡≡ moderate sunny slopes catabolic ▲ moist, longer snow cover ● inversions in depressions	<b>Hydrocycle</b> D discharge (l/m <sup>2</sup> ·s) SR specific runoff (l/m <sup>2</sup> ·km <sup>2</sup> (lites per a second and 1 sq. km)

Source: Hynek et al., 2010.

## CONCLUSION

The material practicalities of the project have been great surprise for the whole community. We debated on significant landscape elements stated in the official list of landscape/nature conservation for improving biodiversity in Deblin-locality. Run-off study offered the understanding accelerated anthropogeneous soil erosion, low underground water store and the link to sky precipitation collection. Weather forecasts from mass-media were corrected in (ir)radiation air regimes ( katabatic/anabatic air circulation). Kaolinite deposits, karst phenomena, rock walls were explained hardly imagined geological/geomorphological history of rocks and landforms starting 500 million years ago in southern polar seas. And GIS technology fascinated everybody. What can we wish more?

## References

- [1] ALCAMO J. et al. Millennium Ecosystem Assessment. Ecosystems and Human Well-being. A Framework for Assessment. A Report of the

- Conceptual Framework Working Group of the Millennium Ecosystem Assessment. Washington: World Resource Institute, Island Press, 2003. 266 pp.
- [2] ANDERSON, B. and HARRISON, P. (eds.) Taking-Place: Non-Representational Theories and Geography. 1<sup>st</sup> ed. Farnham: Ashgate, 2010. 378 pp. ISBN 978-0-7546-7279-1.
- [3] BENNETT, J. Vibrant Matter. A political ecology of things. 1<sup>st</sup> ed. Durham and London: Duke University Press, 2010. 176 pp. ISBN 978-0-8223-4633-3.
- [4] BRYANT, L., SRNICEK, N. and HARMAN, G. (eds.) The Speculative Turn. Continental Materialism and Realism. 1<sup>st</sup> ed. Melbourne: re.press, 2011. 430 pp. ISBN 978-0-9806-6834-6.
- [5] CHÁB J., BREITR K., FATKA O., HLADIL J., KALVODA J., ŠIMŮNEK Z., ŠTORCH P., VAŠÍČEK Z., ZAJÍC J., ZAPLETAL J. (2008): A short geology of the Bohemian Massif fundament and its Carboniferous and Permian cover. 1st ed., Praha: Vydavatelství České geologické služby, 2008. 284 pp. ISBN 978-80-7075-703-1. ( In Czech)
- [6] COOLE, D. and FROST, S. (eds.) New Materialisms. Ontology, Agency, and Politics. 1<sup>st</sup> ed. Durham and London: Duke University Press, 2010. 336 pp. ISBN 978-0-8223-4772-9.
- [7] DELEUZE, G., GUATTARI, F. A Thousand Plateaus. Reprint, London: Continuum, 1987, 2009. 688 pp. ISBN 13-978-0-8264-7694-4.
- [8] DYAKONOV, K.N. Methodological problems in the study of physico-geographical differentiation. In Zvorykin K.V., ed. Problems of Geography, vol.98, Quantitative methods of studying natural environment. Moscow: Mysl, 1975. 214 pp. (In Russian)
- [9] FRIDLAND, V.M. On the organizational level of the soil mantle and the systém of regularities in soil geography. In Voprosy geografii, vol.104: Systems research in the study of nature. Moscow: Mysl, 1977, p. 139-152. (In Russian)
- [10] FRIDLAND, V.M. Structure of soil cover. 1st ed. Moscow: Mysl, 1972. 423 pp. ( In Russian)
- [11] HAASE, G. The development of a common methodology of inventory and surfy in landscape ecology. In Brandt J., Agger P. (eds.): Methodology in landscape ecological research and planning, vol. V, Supplementary volume, Proceedings of the first international seminar of the IALE

- organized at Roskilde University Centre, October 15-19 1984 Roskilde, 1984, p. 68-106. ISBN 87-88183-24-6.
- [12] HEYNEN, N., KAIKA, M. & SWYNGEDOUW, E.(eds.) In the Nature of the Cities. Urban Political Ecology and the Politics of Urban Metabolism. 1st ed. London and New York: Routledge, 2006. 271 pp. ISBN 978-0-415-36828-5.
- [13] HRÁDEK, M. (2000): Geomorphology of the Tišnov-district. Předklášteří : Sborník Okresního muzea Brno-venkov, 2000, p. 67-84 + 7 picture supplement. ( In Czech)
- [14] Hydrology of Czechoslovakia, vol. III, Praha, Institute of Hydrometeorology, 1970, 305 pp. + 7 maps. (In Czech)
- [15] HYNEK, A. The Politics of Landscape on Regional and Local Levels. GeoScape 1, vol.4 (2009), p.10-27. Dept.of Geography, J.E.Purkyne University in Usti nad Labem. 2009. ISSN 1802-1115, <http://geo.ujep.cz>.
- [16] HYNEK A., SVOZIL B., TRÁVNÍČEK J., TROJAN J. Sustainability Educational Project – Case Study Deblín Rural Town, South Moravia, Czech Republic. Proceedings CD EDULEARN10 Conference 5th-7th July 2010, Barcelona, Spain. International Association of Technology, Education and Development (IATED). Edited by L. Gómez Chova, D. Martí Belenguer, I. Candel Torres. International Association of Technology, Education and Development IATED, Valencia, p. 003045 – 003054. ISBN: 978-84-613-9386-2.
- [17] HYNEK A., SVOZIL B., TRÁVNÍČEK J., TROJAN J. Best Practice Example of Educational Project: Sustainability in Deblín, South Moravia, Czech Republic. In: A. Demirci, L. Chalmers, Y. Ari, J. Lidstone, eds.: Building Bridges between Cultures through Geographical Education - Proceedings of the IGU-CGE Istanbul Symposium: July 8-10, 2010, IGU Commission on Geographical Education, Fatih University, 2011, 307 pp., p.23-30. ISBN: 978-975-303-110-3
- [18] HYNEK A., SVOZIL B., VÁGAI T., TRÁVNÍČEK J., TROJAN J. Sustainability in Practice. In: A.Barton, J.Douhá, eds.: Multi-Actor Learning for Sustainable Regional Development in Europe: A Handbook of Best Practice. Grosvenor House Publishing Limited: Guildford, 2010. 343 pp., p. 215-233. ISBN 978-1-908105-33-2
- [19] HYNEK, A. Field Project: Crossing the Czech and Austrian Border. HERODOT Conference: Ayvalik, Turkey, 28-31 May 2009. Theme: Celebrating Geographical Diversity. MBV Berlin Mensch und Buch

- Verlag, 2009, p.194-200. Donert, K., Schmeinck, D., Ari, Y., Attard, M., O'Reilly, G., eds., 340 pp. ISBN 978-3-86664-586-8.
- [20] KOLEJKA J. On some imperfections in contemporary Czech landscape study and the look for way of their remedy. In Kolečka J. et al. (ed.): Czech and Slovak landscape in contemporary research. 1st ed., Masaryk University Brno, p.78-96, 2011, 342 pp., ISBN 978-80-210-5420-2. ( In Czech)
- [21] KUBALÍKOVÁ, L. Geomorphology of the Deblin-highland. Thesis, Brno: Dept. of Geography, Fac.Sci., Masaryk University, 2005. 83 pp. + supplement.
- [22] PLÍVA, K. Typological classification systém of IFEM. Brandýs n.L.: IFEM, 1987, 52 pp.
- [23] PREOBRAZHENSKIY, V. S. Trends of development of landscape ecology in the USSR. In Brandt J., Agger P. (eds.): Methodology in landscape ecological research and planning, vol. V, Supplementary volume, Proceedings of the first international seminar of the IALE organized at Roskilde University Centre, October 15-19 1984 Roskilde, 1984, p. 17-27. ISBN 87-88183-24-6.
- [24] QUITT, E. General and detailed topoclimatic mapping for purposes of environment protection. Moravian Geographical Reports, Brno: Institute of Geonics, No.1-2, 1994, p. 39-53. ISSN 12110-8812.
- [25] QUITT E. (1987): Topoclimatic map of the ČSR 1:50 000, sheet 24-32 Brno, 1987. Collection of geographical map of the environment. Brno: Geografický ústav ČSAV.
- [26] SPIRIDONOV, A. Geomorphological mapping. Moskva: Nėdra, 1975. 184 pp.
- [27] SVOZIL, B., HYNEK, A. (eds.). The Deblin-locality: on the road to sustainability: Homeland study textbook, 1st ed. Deblín: Basic and nursery school Deblín. 2011. 267 pp. ISBN: 978-80-260-0164-5.
- [28] TROJAN, J., TRÁVNÍČEK, J. Atlas of Deblin-locality. 1st ed. Brno: GEODIS BRNO, ltd. 2011. 78 pp. ISBN: 978-80-87473-00-9.
- [29] WYLIE, J. Landscape. 1st ed. London and New York: Routledge, 2007. 246 pp. ISBN 10-0-415-34144-8.

## **Shrnutí**

V rámci mezinárodního projektu LENSUS bylo zvoleno Deblínsko za pilotní území pro výchovu k trvalé udržitelnosti. Projekt zahrnoval i studium přírodní krajiny založené na analýze mapových podkladů a terénním průzkumu. Podařilo se zkonstruovat i mapu fyzickogeografických celků intenzivními výzkumnými metodami a zaměřit se na studium materiality přírodních krajinných prostorových jednotek. Rovněž intenzivní sociální výzkum přinesl pozoruhodné výsledky spoluprací univerzity a základní školy, kdy rodiny žáků projevívaly nebyvalý zájem o téma trvalé udržitelnosti a komunita žije tímto projektem. Rodiče byli překvapeni a přivítali výsledky studia pro svůj život.