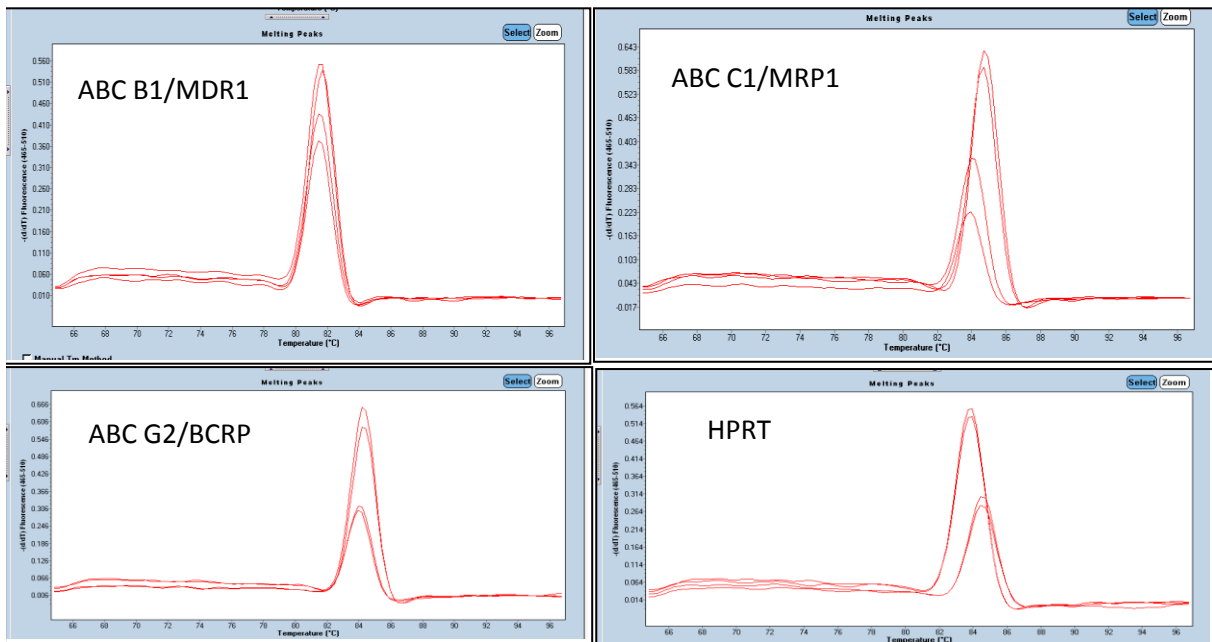


Melting curves



Ct pomocí druhé derivace

	průměr	HPRT	ΔCt	$2^{-\Delta Ct}$
ABC B1 DMSO	31.05	31.14	23.415	7.725
ABC B1 DMSO	31.23			
ABC B1 TCDD	30.48	30.13	20	10.13
ABC B1 TCDD	29.78			
ABC C1 DMSO	21.9	21.545	23.415	-1.87
ABC C1 DMSO	21.19			
ABC C1 TCDD	32	32	20	12
ABC C1 TCDD	32			
ABC G2 DMSO	20.42	20.215	23.415	-3.2
ABC G2 DMSO	20.01			
ABC G2 TCDD	19.56	19.585	20	-0.415
ABC G2 TCDD	19.61			
HPRT DMSO	23.6	23.415		
HPRT DMSO	23.23			
HPRT TCDD	19.89	20		
HPRT TCDD	20.11			

25.10.	2nd					fit	
Samples	MeanCp	STD Cp	Mean conc	STD conc		Samples	MeanCp
A1, A10, A	31.13744	0.124969914	0	0		A1, A10, A	32.45417
B1, B2	30.13064	0.496106915	0	0		B1, B2	31.019
C1, C2	21.54689	0.502657316	0	0		C1, C2	23.35375
D1, D2	32	0	0	0		D1, D2	33.55503
E1, E2	20.21395	0.288863981	0	0		E1, E2	22.88434
F1, F2	19.58477	0.030025318	0	0		F1, F2	20.51146
G1, G2	23.41615	0.260689725	0	0		G1, G2	24.89905
H1, H2	20.00056	0.157682749	0	0		H1, H2	23.31545

Include	Pos	Name	Cp
True	A1	ABC B1 DMSO	31.05
True	A2	ABC B1 DMSO	31.23
True	B1	ABC B1 TCDD	30.48
True	B2	ABC B1 TCDD	29.78
True	C1	ABC C1 DMSO	21.9
True	C2	ABC C1 DMSO	21.19
True	D1	ABC C1 TCDD	32
True	D2	ABC C1 TCDD	32
True	E1	ABC G2 DMSO	20.42
True	E2	ABC G2 DMSO	20.01
True	F1	ABC G2 TCDD	19.56
True	F2	ABC G2 TCDD	19.61
True	G1	HPRT DMSO	23.6
True	G2	HPRT DMSO	23.23
True	H1	HPRT TCDD	19.89
True	H2	HPRT TCDD	20.11

Include	Pos
True	A1
True	A2
True	B1
True	B2
True	C1
True	C2
True	D1
True	D2
True	E1
True	E2
True	F1
True	F2
True	G1
True	G2
True	H1
True	H2

LightCycler® 480 Software release 1.5.1.62

Instrument: LC480 / Standby (no MWP)

Window: cvika A 2017

Analyses: Tm Calling for All Samples

Information: Program: melting curve, Color Compensation: Off

Subset: All

	1	2	3	4	5	6	7	8	9	10	11	12
A	●	●	●	●	●	●	●	●	●	●	●	●
B	●	●	●	●	●	●	●	●	●	●	●	●
C	●	●	●	●	●	●	●	●	●	●	●	●
D	●	●	●	●	●	●	●	●	●	●	●	●
E	●	●	●	●	●	●	●	●	●	●	●	●
F	●	●	●	●	●	●	●	●	●	●	●	●
G	●	●	●	●	●	●	●	●	●	●	●	●
H	●	●	●	●	●	●	●	●	●	●	●	●

Fluorescence (465-510)

65 70

Tm results

None 1 2

Display

Shoulders Tm Area Hei

Samples				
Include	Color	Pos	Name	
<input checked="" type="checkbox"/>	■	A1	ABC	B1 DMSO
<input checked="" type="checkbox"/>	■	A2	ABC	B1 DMSO
<input checked="" type="checkbox"/>	■	B1	ABC	B1 TCDD
<input checked="" type="checkbox"/>	■	B2	ABC	B1 TCDD

-(d/dT) Fluorescence (465-510)

Manual Tm Method

Apply Template Notes Calculate



Information 10/25/2017 16:01:06 Instrument Warm Up. This may ta
 Information 10/25/2017 16:03:10 Instrument Warm Up finished.

Start | LightCycler® 480 | Microsoft Excel - Sešit1

LightCycler® 480 Software release 1.5.1.62

Instrument: LC480 / Standby (no MWP)

Window: cvika A 2017

Experiment

Analyses Tm Calling for All Samples

Information Program: melting curve, Color Compensation: Off

Subset: All

	1	2	3	4	5	6	7	8	9	10	11	12
A	■	■	■	■	■	■	■	■	■	■	■	■
B	■	■	■	■	■	■	■	■	■	■	■	■
C	■	■	■	■	■	■	■	■	■	■	■	■
D	■	■	■	■	■	■	■	■	■	■	■	■
E	■	■	■	■	■	■	■	■	■	■	■	■
F	■	■	■	■	■	■	■	■	■	■	■	■
G	■	■	■	■	■	■	■	■	■	■	■	■
H	■	■	■	■	■	■	■	■	■	■	■	■

Fluorescence (465-510)

Report

Sum.

Tm results

None 1 2

Display

Shoulders Tm Area Height

Samples					
Include	Color	Pos	Name		
<input checked="" type="checkbox"/>	■	C1	ABC	C1	DMSO
<input checked="" type="checkbox"/>	■	C2	ABC	C1	DMSO
<input checked="" type="checkbox"/>	■	D1	ABC	C1	TCDD
<input checked="" type="checkbox"/>	■	D2	ABC	C1	TCDD

-(d/dT) Fluorescence (465-510)

Manual Tm Method

Apply Template Notes Calculate



Information 10/25/2017 16:01:06 Instrument Warm Up. This may take 10-15 minutes.

Information 10/25/2017 16:03:10 Instrument Warm Up finished.

Start | LightCycler® 480 | Microsoft Excel - Sešit1

LightCycler® 480 Software release 1.5.1.62

Instrument: LC480 / Standby (no MWP)

Window: cvika A 2017

Experiment

Analyses Tm Calling for All Samples

Information Program: melting curve, Color Compensation: Off

Subset: All

	1	2	3	4	5	6	7	8	9	10	11	12
A	■	■	■	■	■	■	■	■	■	■	■	■
B	■	■	■	■	■	■	■	■	■	■	■	■
C	■	■	■	■	■	■	■	■	■	■	■	■

-(465-510)

Analysis

Report

Sum.

Tm results

None 1 2

Display

Shoulders Tm Area Hei

Samples					
Include	Color	Pos	Name		
<input checked="" type="checkbox"/>	■	E1	ABC	G2	DMSO
<input checked="" type="checkbox"/>	■	E2	ABC	G2	DMSO
<input checked="" type="checkbox"/>	■	F1	ABC	G2	TCDD
<input checked="" type="checkbox"/>	■	F2	ABC	G2	TCDD

Apply Template

Notes

Calculate

Manual Tm Method



Information 10/25/2017 16:01:06 Instrument Warm Up. This may ta
 Information 10/25/2017 16:03:10 Instrument Warm Up finished.

Start | LightCycler@ 480 | Microsoft Excel - Sežit1

LightCycler@ 480 Software release 1.5.1.62

Instrument: LC480 / Standby (no MWP)

Window: cvika A 2017

Experiment

Analyses Tm Calling for All Samples

Information Program: melting curve, Color Compensation: Off

Subset Editor

Subset: All

	1	2	3	4	5	6	7	8	9	10	11	12
A	●	●	●	●	●	●	●	●	●	●	●	●
B	●	●	●	●	●	●	●	●	●	●	●	●
C	●	●	●	●	●	●	●	●	●	●	●	●
D	●	●	●	●	●	●	●	●	●	●	●	●
E	●	●	●	●	●	●	●	●	●	●	●	●
F	●	●	●	●	●	●	●	●	●	●	●	●
G	●	●	●	●	●	●	●	●	●	●	●	●
H	●	●	●	●	●	●	●	●	●	●	●	●

Tm results

None 1 2

Display

Shoulders Tm Area Height

Samples			
Include	Color	Pos	Name
<input checked="" type="checkbox"/>	●	G1	HPRT DMSO
<input checked="" type="checkbox"/>	●	G2	HPRT DMSO
<input checked="" type="checkbox"/>	●	H1	HPRT TCDD
<input checked="" type="checkbox"/>	●	H2	HPRT TCDD

Apply Template

Notes

Calculate

Manual Tm Method

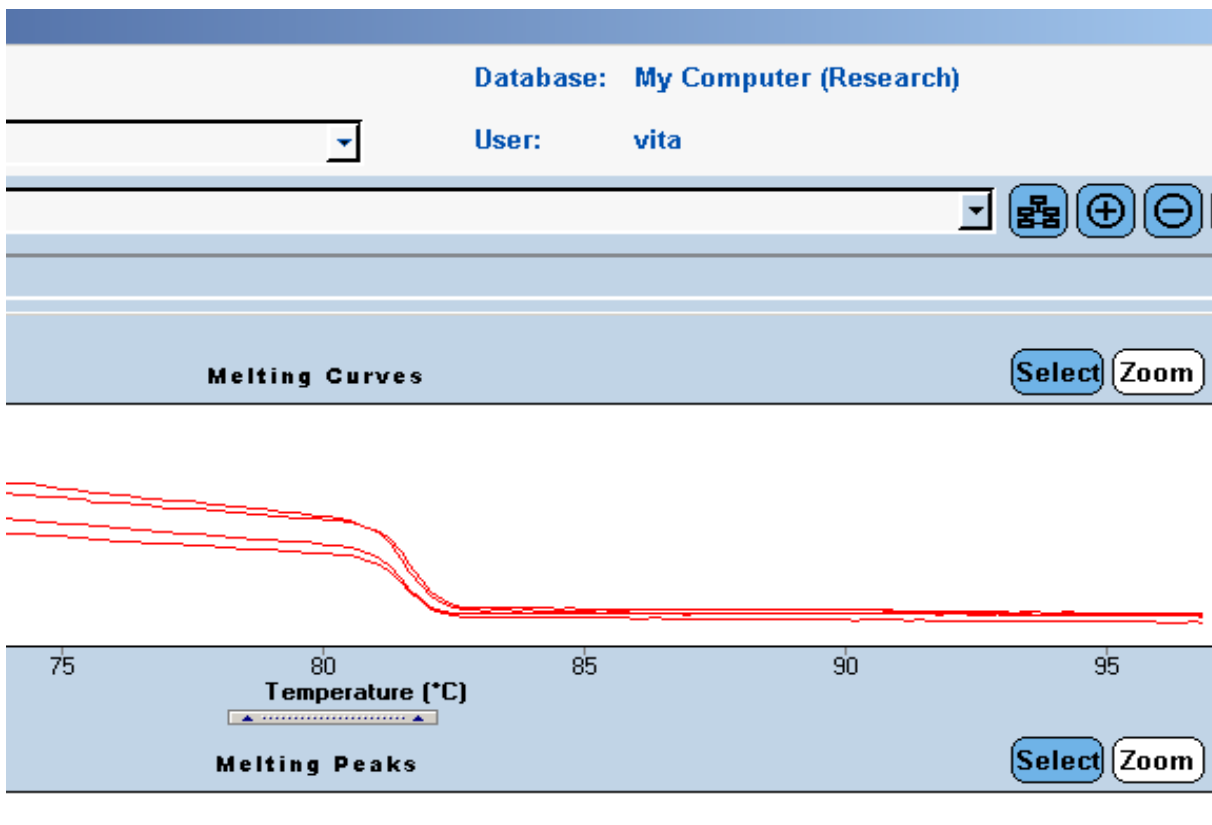
⚠ Information 10/25/2017 16:01:06 Instrument Warm Up. This may ta

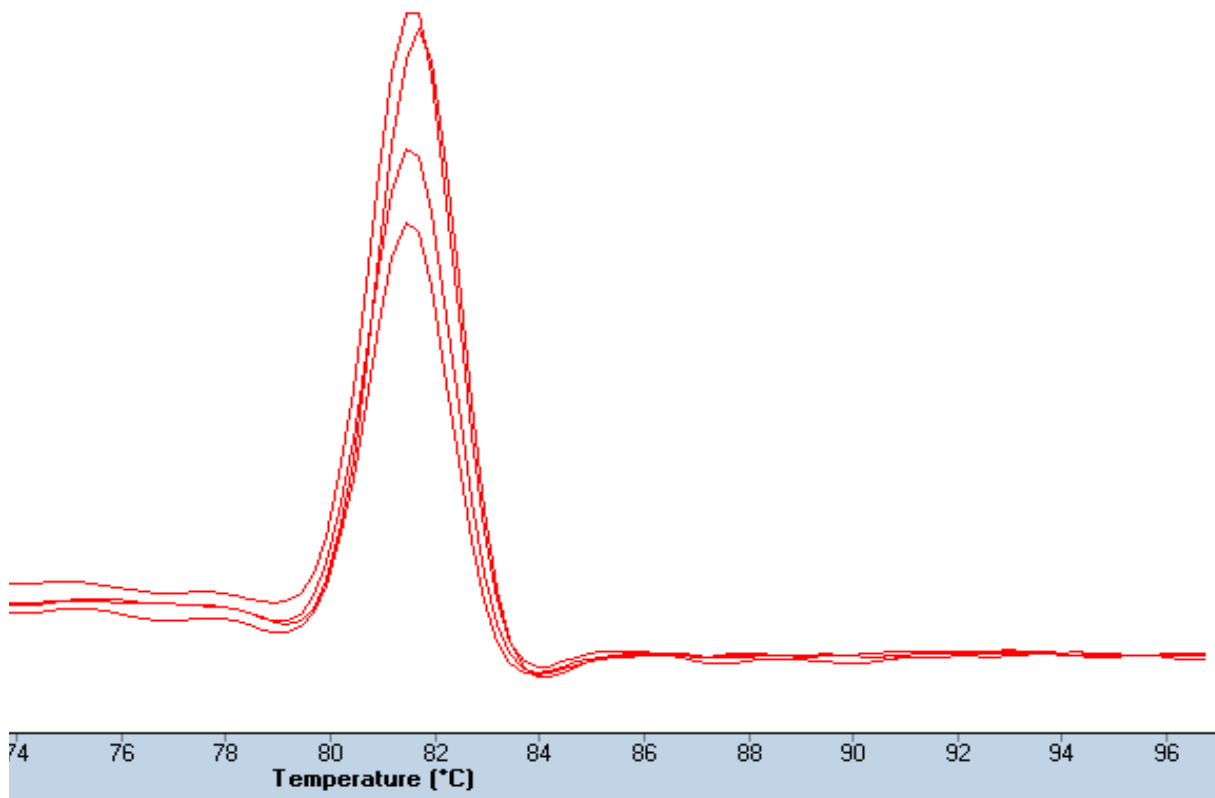
⚠ Information 10/25/2017 16:03:10 Instrument Warm Up finished.

Start | LightCycler® 480 | Microsoft Excel - Sešit1

STD Cp	Mean conc	STD conc
0.923514	0	0
0	0	0
1.149032	0	0
1.106497	0	0
0.608318	0	0
0.200523	0	0
0.748023	0	0
1.790575	0	0

Name	Cp	Concentrat	Standard	Status
ABC B1 DI	32.77			0
ABC B1 DI	31.41			0
ABC B1 TC	31.02			0
ABC B1 TCDD				0
ABC C1 DI	22.54			0
ABC C1 DI	24.17			0
ABC C1 TC	32.77			0
ABC C1 TC	34.34			0
ABC G2 DI	23.31			0
ABC G2 DI	22.45			0
ABC G2 TC	20.65			0
ABC G2 TC	20.37			0
HPRT DM	25.43			0
HPRT DM	24.37			0
HPRT TC	24.58			0
HPRT TC	22.05			0





Color Comp (Off) ✓ Filter Comb 465-510 Max Peaks (2 or less) HybProbe Format

ake several minutes.

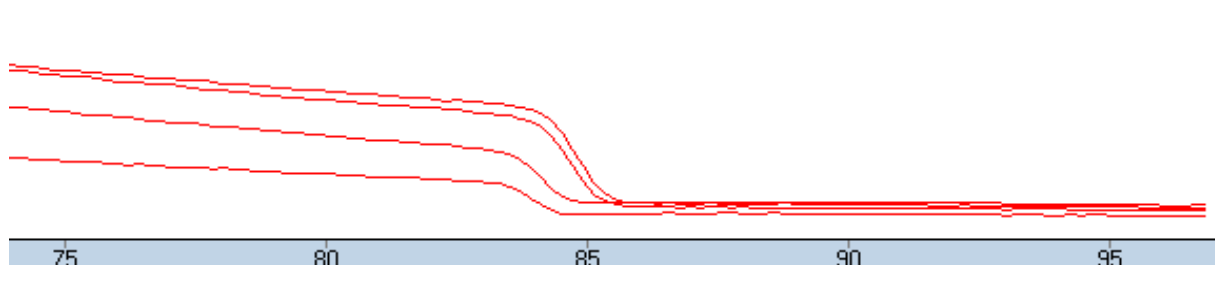
Database: My Computer (Research)

User: vita

☰ ⊕ ⊖

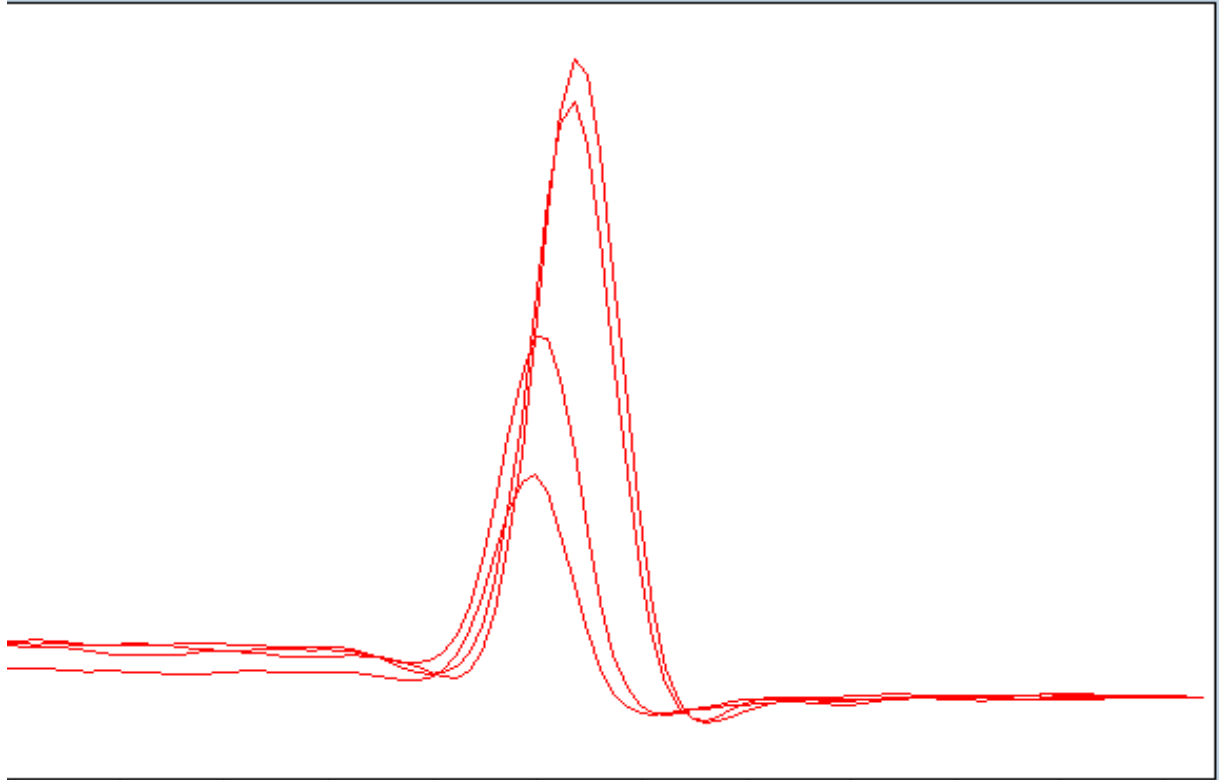
Melting Curves

Select Zoom



Temperature [°C]

Melting Peaks Select Zoom



Temperature [°C]

Color Comp (Off) Filter Comb 465-510 Max Peaks (2 or less) HybProbe Format

ake several minutes.

Melting Curves Select Zoom

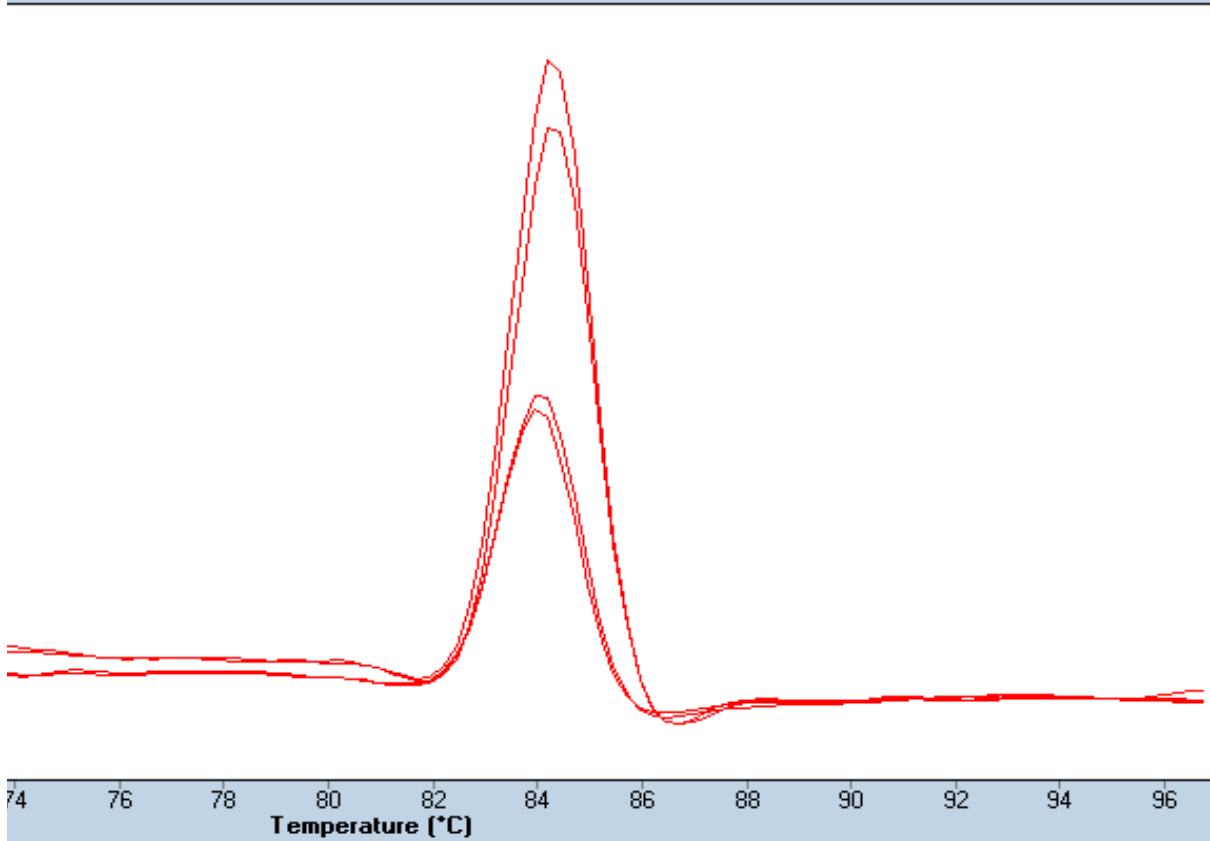
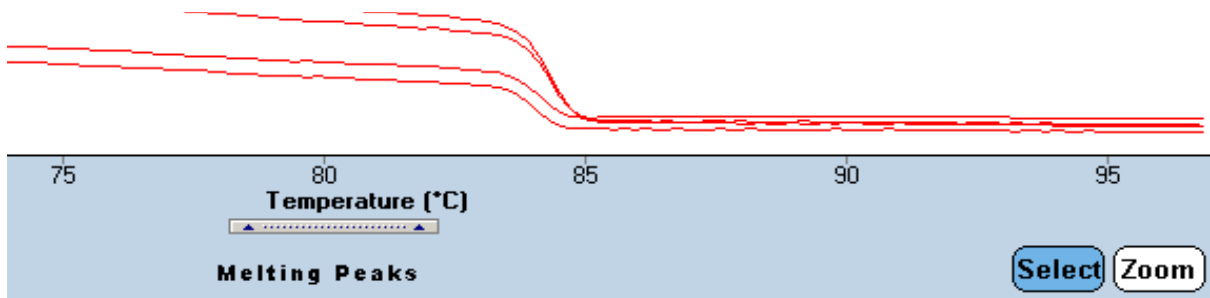
Database: **My Computer (Research)**

User: **vita**

+ -

Melting Curves Select Zoom





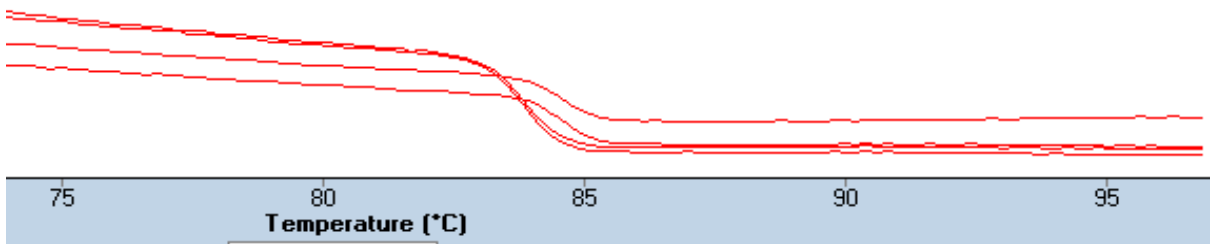
Take several minutes.

Database: My Computer (Research)

User: vita

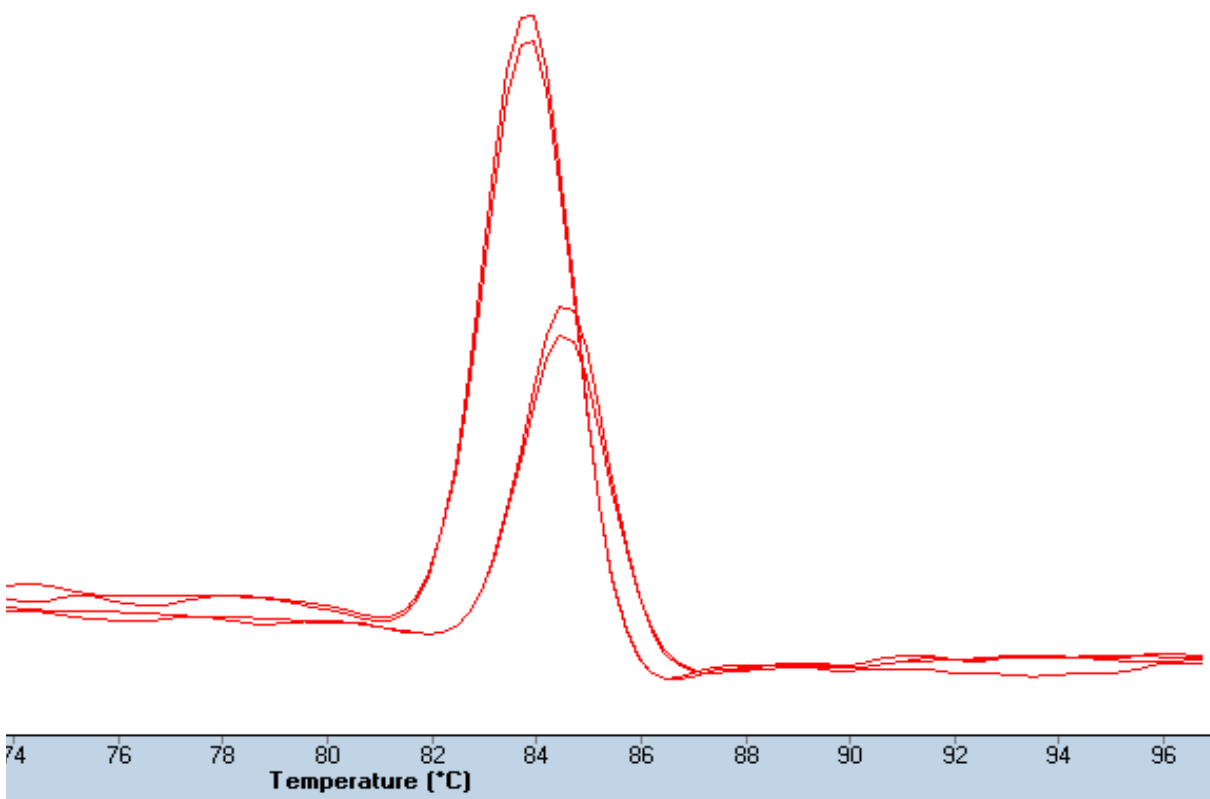
Melting Curves

Select Zoom



Melting Peaks

Select Zoom



Color Comp (Off)

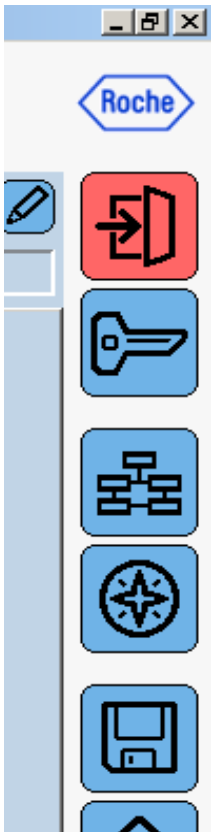


Filter Comb 465-510

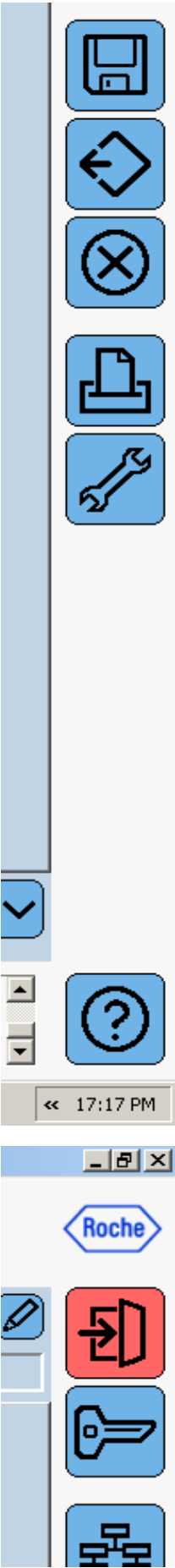
Max Peaks (2 or less)

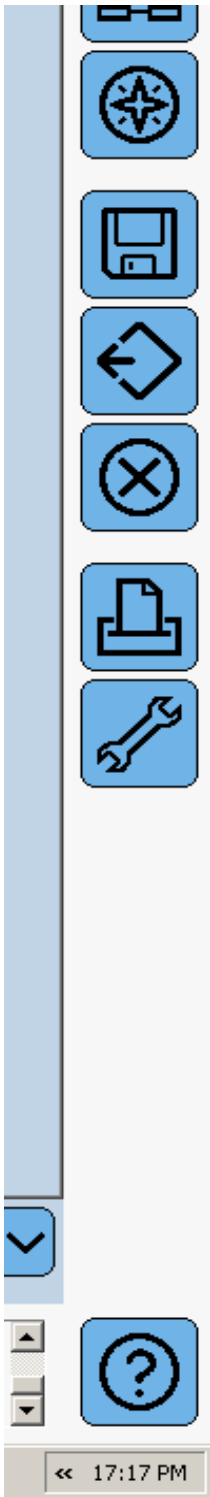
HybProbe Format

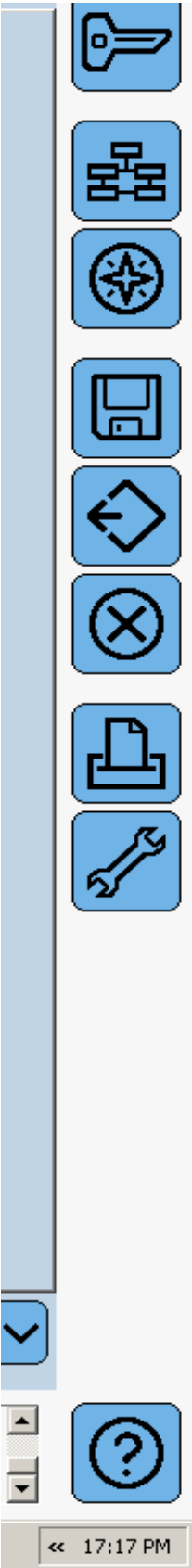
ake several minutes.











Instrument: LC480 / Standby (MWP loaded)

Window: cvika B 2017

- Experiment
- Subset Editor
- Sample Editor
- Analysis
- Report
- Sum.

Analyses Tm Calling for All Samples

Information Program: melting curve, Color Compensation: Off

Subset: All

	1	2	3	4	5	6	7	8	9	10	11	12
A	●	●	●	●	●	●	●	●	●	●	●	●
B	●	●	●	●	●	●	●	●	●	●	●	●
C	●	●	●	●	●	●	●	●	●	●	●	●
D	●	●	●	●	●	●	●	●	●	●	●	●
E	●	●	●	●	●	●	●	●	●	●	●	●
F	●	●	●	●	●	●	●	●	●	●	●	●
G	●	●	●	●	●	●	●	●	●	●	●	●
H	●	●	●	●	●	●	●	●	●	●	●	●

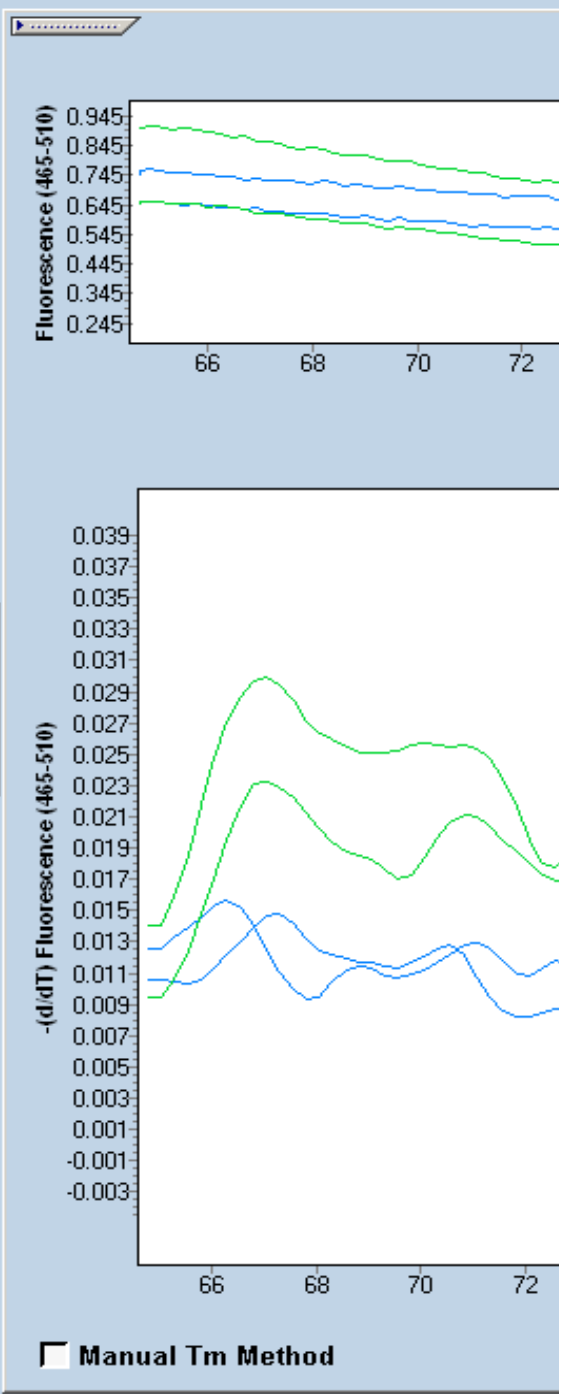
Navigation icons: Home, Previous, Next, Stop

Tm results

None 1 2

Display Shoulders Tm Area Height

Samples			
Include	Color	Pos	Name
<input checked="" type="checkbox"/>	●	A3	ABC B1 DMSO
<input checked="" type="checkbox"/>	●	A4	ABC B1 DMSO
<input checked="" type="checkbox"/>	●	B3	ABC B1 TCDD
<input checked="" type="checkbox"/>	●	B4	ABC B1 TCDD



Manual Tm Method

Apply Template Notes Calculate



Information 11/01/2017 15:56:54 Instrument Warm Up finished

Start | LightCycler® 480 | C:\Documents and Sett... | Microsoft Excel

LightCycler® 480 Software release 1.5.1.62

Instrument: LC480 / Standby (MWP loaded)

Window: cvika B 2017

Experiment

Analyses Tm Calling for All Samples

Subset Editor

Information Program: melting curve, Color Compensation: Off

Sample Editor

Subset: All

	1	2	3	4	5	6	7	8	9	10	11	12
A	●	●	●	●	●	●	●	●	●	●	●	●
B	●	●	●	●	●	●	●	●	●	●	●	●
C	●	●	●	●	●	●	●	●	●	●	●	●
D	●	●	●	●	●	●	●	●	●	●	●	●
E	●	●	●	●	●	●	●	●	●	●	●	●
F	●	●	●	●	●	●	●	●	●	●	●	●
G	●	●	●	●	●	●	●	●	●	●	●	●
H	●	●	●	●	●	●	●	●	●	●	●	●

Analysis

Report

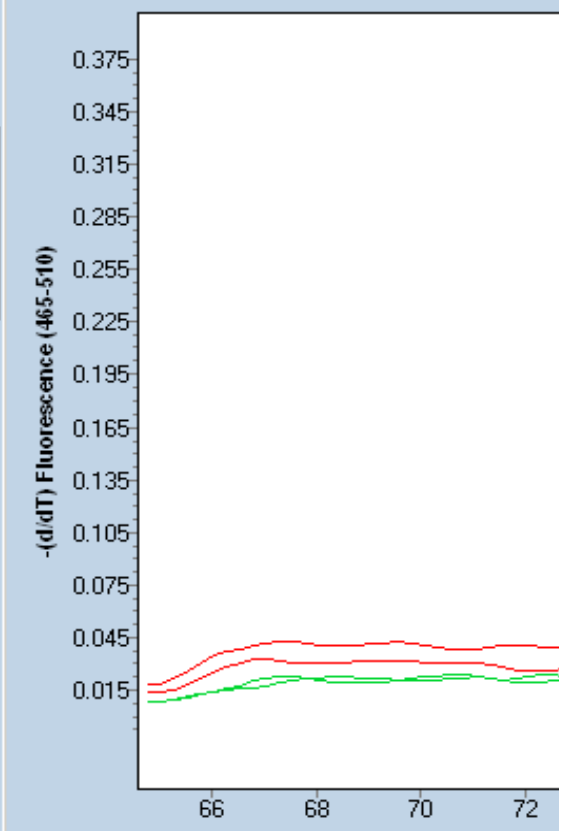
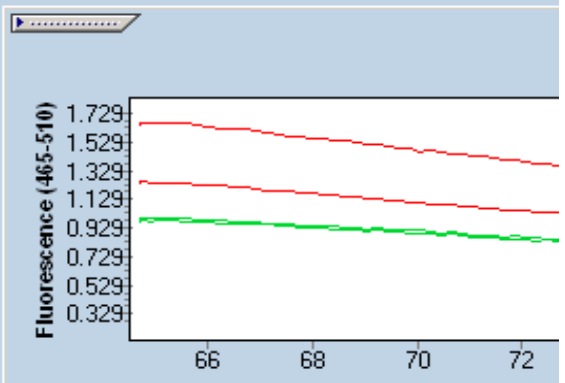
Sum.

Tm results

None 1 2

Display Shoulders Tm Area Hei

Samples				
Include	Color	Pos	Name	
<input checked="" type="checkbox"/>	●	C3	ABC	C1 DMSO
<input checked="" type="checkbox"/>	●	C4	ABC	C1 DMSO
<input checked="" type="checkbox"/>	●	D3	ABC	C1 TCDD
<input checked="" type="checkbox"/>	●	D4	ABC	C1 TCDD



Manual Tm Method

Apply Template Notes Calculate



Information 11/01/2017 15:54:49 Instrument Warm Up. This ma
 Information 11/01/2017 15:56:54 Instrument Warm Up finished

Start LightCycler@ 480 C:\Documents and Settin... F:\yyuka 2017

LightCycler@ 480 Software release 1.5.1.62

Instrument: LC480 / Standby (MWP loaded)

Window: cvika B 2017

- Experiment
- Subset Editor
- Sample Editor
- Analysis
- Report
- Sum.

Analyses Tm Calling for All Samples

Information Program: melting curve, Color Compensation: Off

Subset: All

	1	2	3	4	5	6	7	8	9	10	11	12
A	Red	Red	Blue	Blue	Blue	Blue	Blue	Blue	Blue	Blue	Blue	Blue
B	Red	Red	Green	Green	Blue	Blue	Blue	Blue	Blue	Blue	Blue	Blue
C	Red	Red	Green	Green	Blue	Blue	Blue	Blue	Blue	Blue	Blue	Blue
D	Red	Red	Red	Red	Blue	Blue	Blue	Blue	Blue	Blue	Blue	Blue
E	Red	Red	Red	Red	Blue	Blue	Blue	Blue	Blue	Blue	Blue	Blue
F	Red	Red	Red	Red	Blue	Blue	Blue	Blue	Blue	Blue	Blue	Blue
G	Red	Red	Red	Red	Blue	Blue	Blue	Blue	Blue	Blue	Blue	Blue
H	Red	Red	Red	Red	Blue	Blue	Blue	Blue	Blue	Blue	Blue	Blue

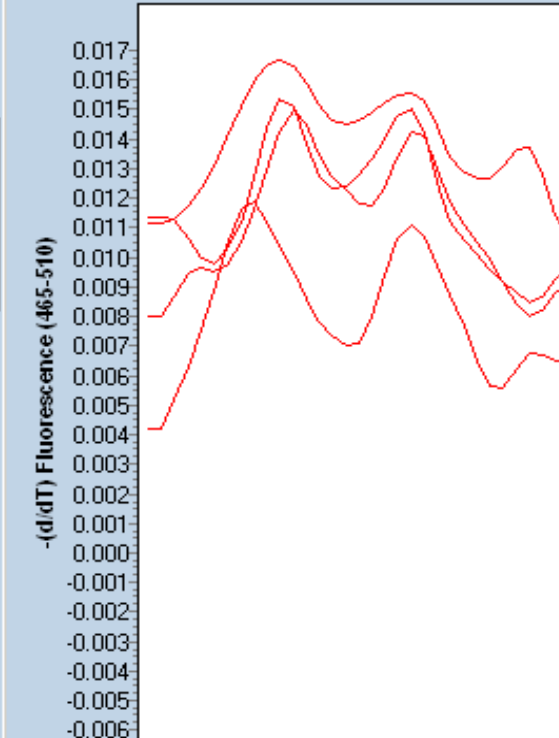
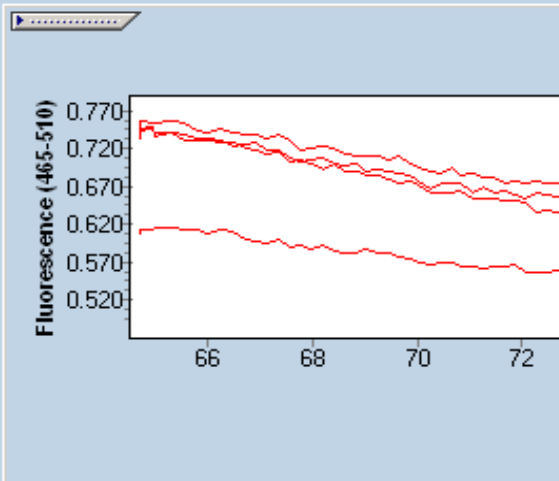
Tm results

None 1 2

Display

Shoulders Tm Area Hei


Samples			
Include	Color	Pos	Name
<input checked="" type="checkbox"/>	Red	E3 ABC G2	DMSO
<input checked="" type="checkbox"/>	Red	E4 ABC G2	DMSO
<input checked="" type="checkbox"/>	Red	F3 ABC G2	TCDD
<input checked="" type="checkbox"/>	Red	F4 ABC G2	TCDD



66 68 70 72

Manual Tm Method

Apply Template Notes Calculate

 Information 11/01/2017 15:54:49 Instrument Warm Up. This ma
 Information 11/01/2017 15:56:54 Instrument Warm Up finished

Start | LightCyler® 480 | C:\Documents and Settin... | F:\yyuka 2017

LightCyler® 480 Software release 1.5.1.62

Instrument: LC480 / Standby (MWP loaded)

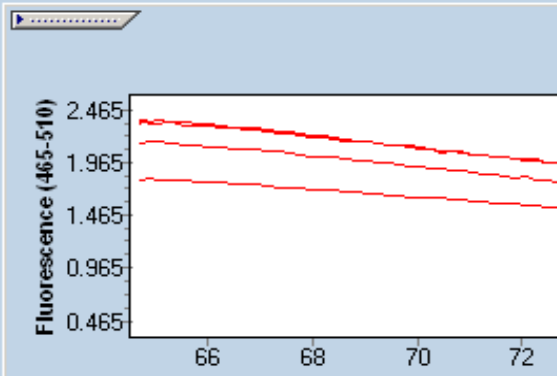
Window: cvika B 2017

Experiment Analyses Tm Calling for All Samples

Subset Editor Information Program: melting curve, Color Compensation: Off

Subset: All    

	1	2	3	4	5	6	7	8	9	10	11	12
A												
B												
C												
D												
E												
F												
G												
H												

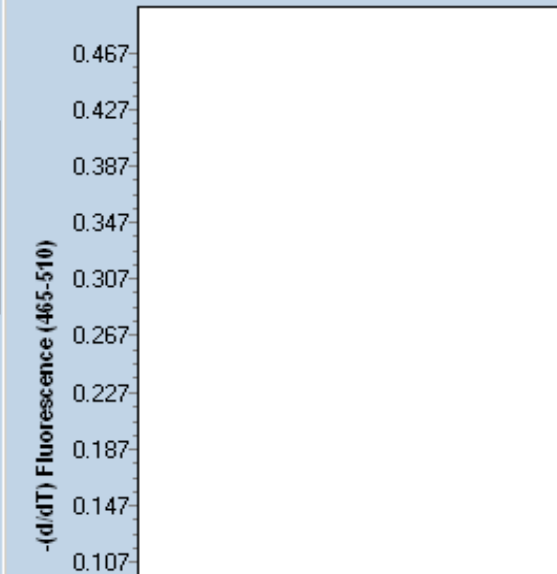


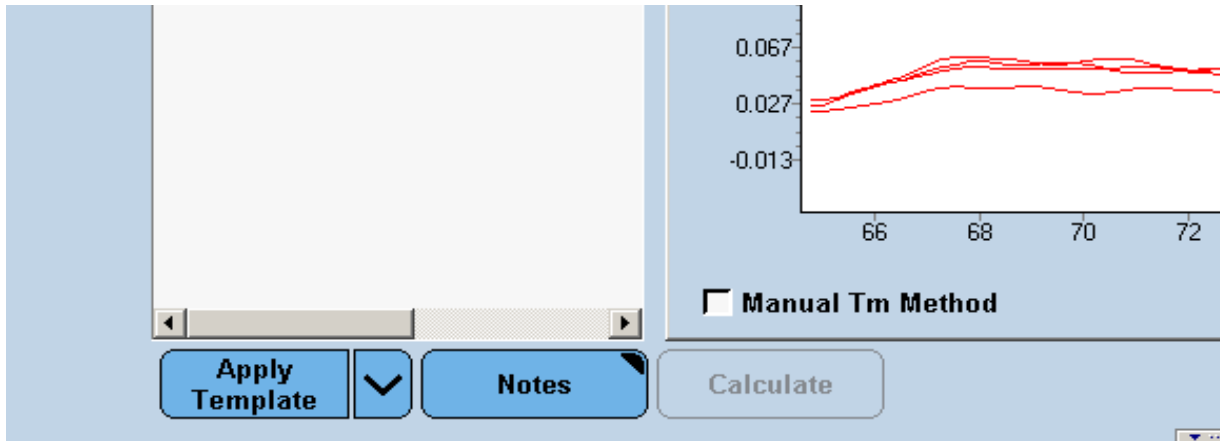
Tm results

None 1 2

Display Shoulders Tm Area Hei

Samples			
Include	Color	Pos	Name
<input checked="" type="checkbox"/>		G3	HPRT DMSO
<input checked="" type="checkbox"/>		G4	HPRT DMSO
<input checked="" type="checkbox"/>		H3	HPRT TCDD
<input checked="" type="checkbox"/>		H4	HPRT TCDD





Information 11/01/2017 15:54:49 Instrument Warm Up. This ma
Information 11/01/2017 15:56:54 Instrument Warm Up finished

Windows taskbar showing the Start button, system tray icons, and open applications: LightCycler® 480, C:\Documents and Settin..., and F:\yyuka 2017.

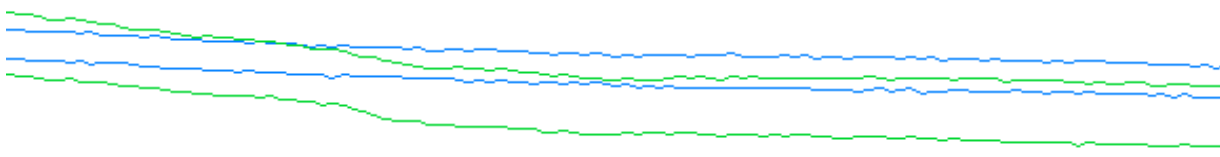
Database: My Computer (Research)

User: vita

Melting Curves

Select

Zoom

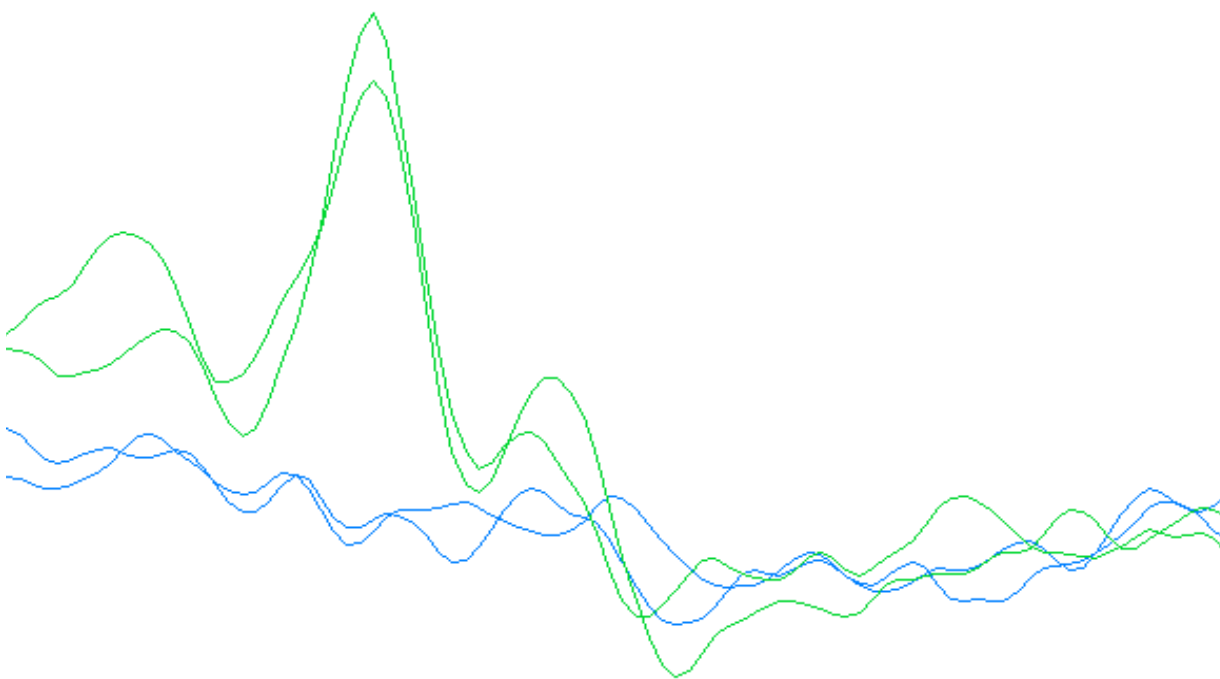


Temperature [°C]

Melting Peaks

Select

Zoom



Temperature [°C]

Color Comp
(Off)



Filter Comb
465-510

Max Peaks
(2 or less)

HybProbe
Format

y take several minutes.

cvika 2...

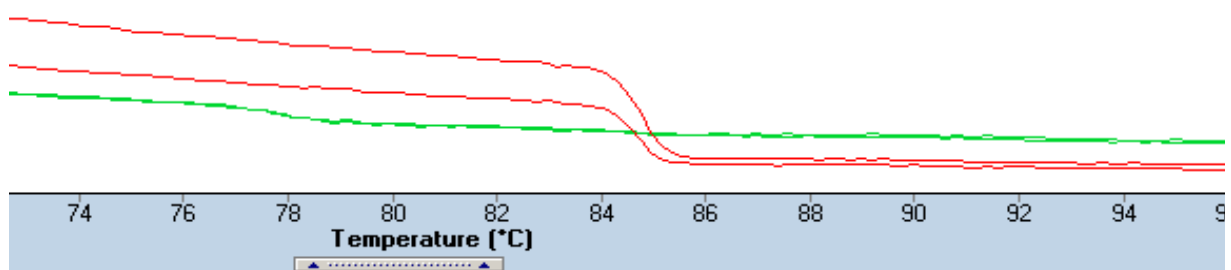
Database: My Computer (Research)

User: vita

Melting Curves

Select

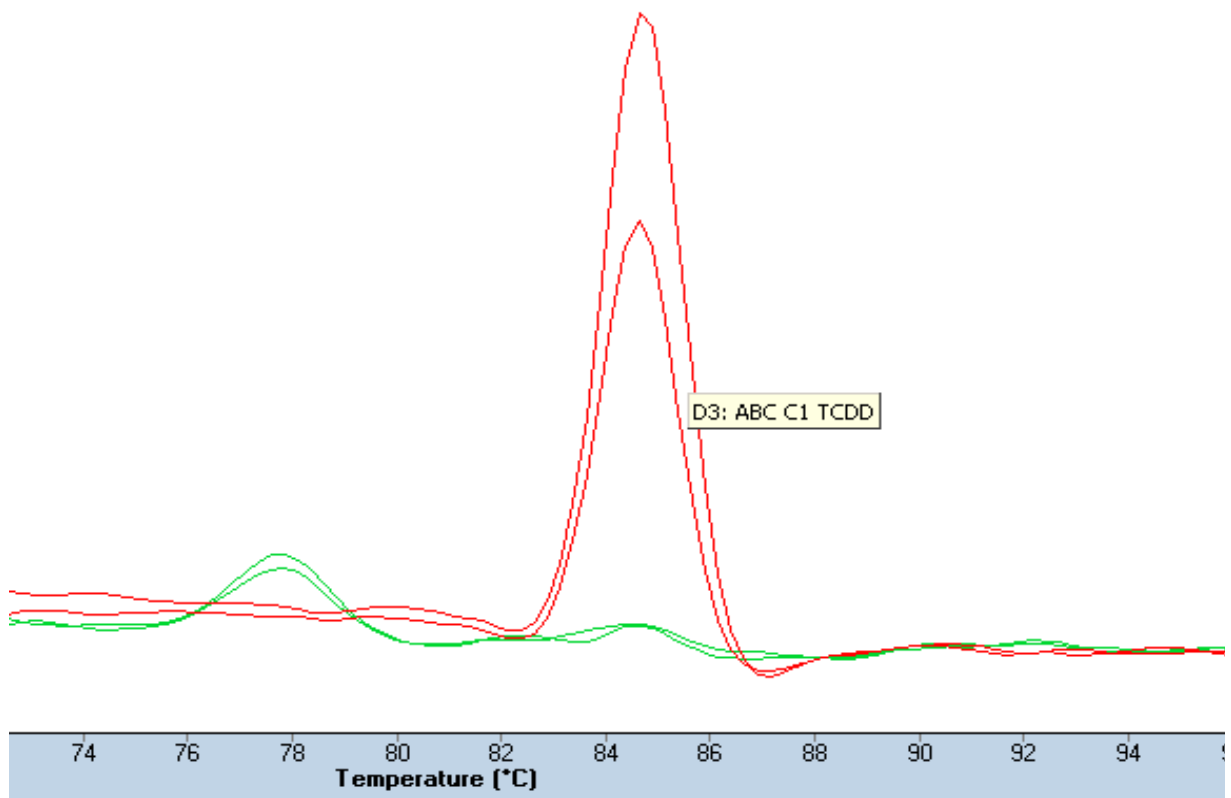
Zoom



Melting Peaks

Select

Zoom



Color Comp (Off) ✓ Filter Comb 465-510 Max Peaks (2 or less) HybProbe Format

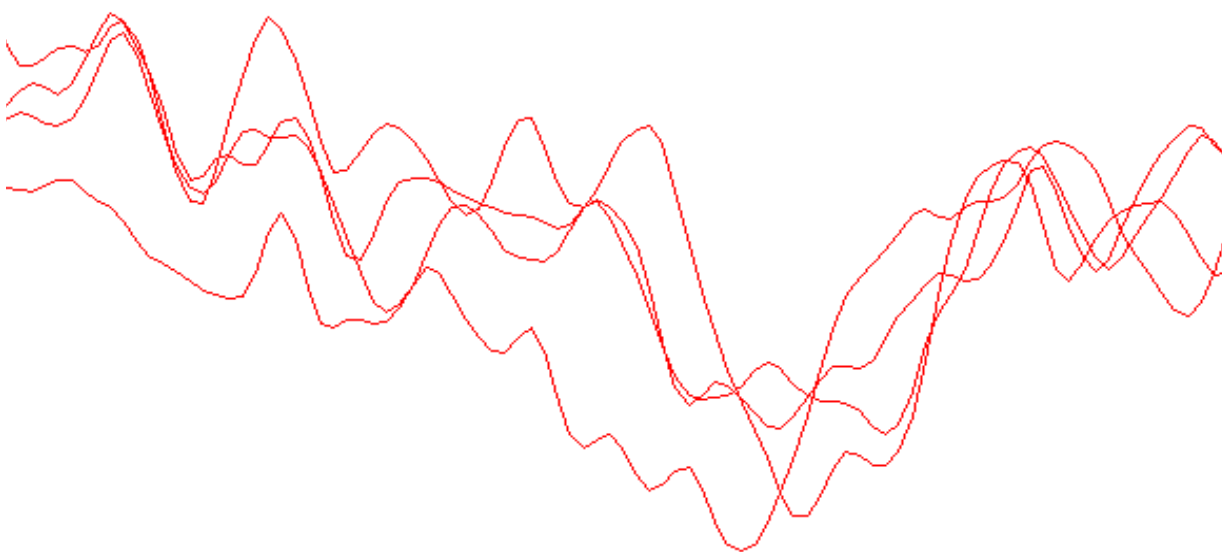
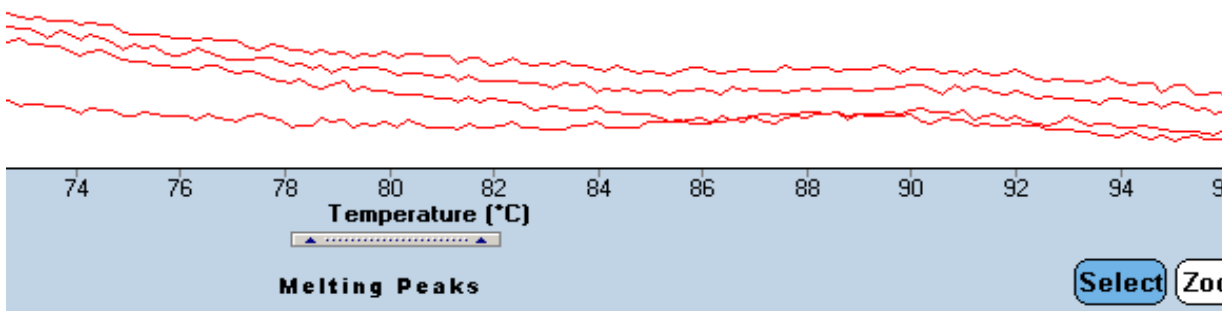
y take several minutes.

cvika 2017 A.xls qRTPCR A.xls

Database: My Computer (Research)

User: vita

Melting Curves Select Zoom



74 76 78 80 82 84 86 88 90 92 94
Temperature [°C]

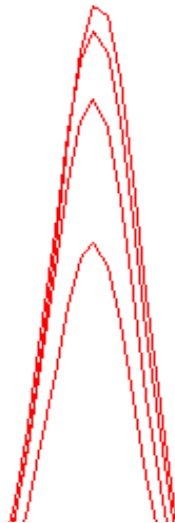
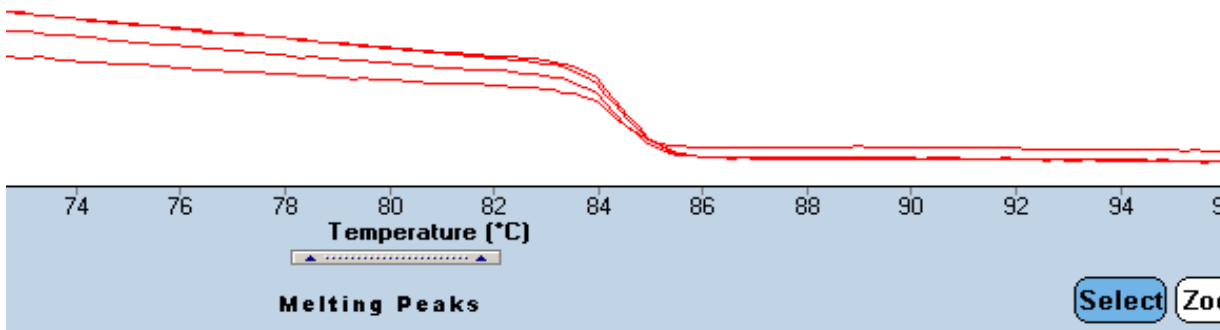
Color Comp (Off) ✓ Filter Comb 465-510 Max Peaks (2 or less) HybProbe Format

y take several minutes.
.

cvika 2017 A.xls qRTPCR A.xls

Database: My Computer (Research)
User: vita

Melting Curves Select Zoom





74 76 78 80 82 84 86 88 90 92 94

Color Comp
(Off)



Filter Comb
465-510

Max Peaks
(2 or less)

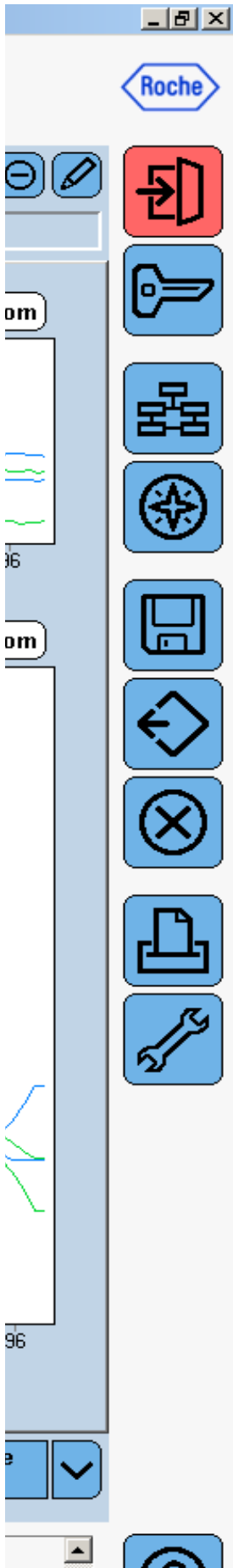
HybProbe
Format

y take several minutes.

.

cvika 2017 A.xls

qRTPCR A.xls





<< 17:14 PM



Roche



om

96

om

96

Navigation and status area:

- Dropdown menu with a checkmark icon.
- Vertical scroll bar.
- Question mark icon.
- Time: << 17:15 PM

Roche application toolbar:

- Roche logo
- Minus and pencil icons
- Red button with a double arrow icon
- Blue button with a key icon
- Blue button with a hierarchical structure icon
- Blue button with a compass icon
- Blue button with a floppy disk icon
- Blue button with a diamond and arrow icon
- Blue button with a circle and X icon
- Blue button with a printer icon
- Blue button with a wrench icon

Handwritten red annotations:

- Red wavy lines on the left side.
- Red scribbles at the bottom left.

