



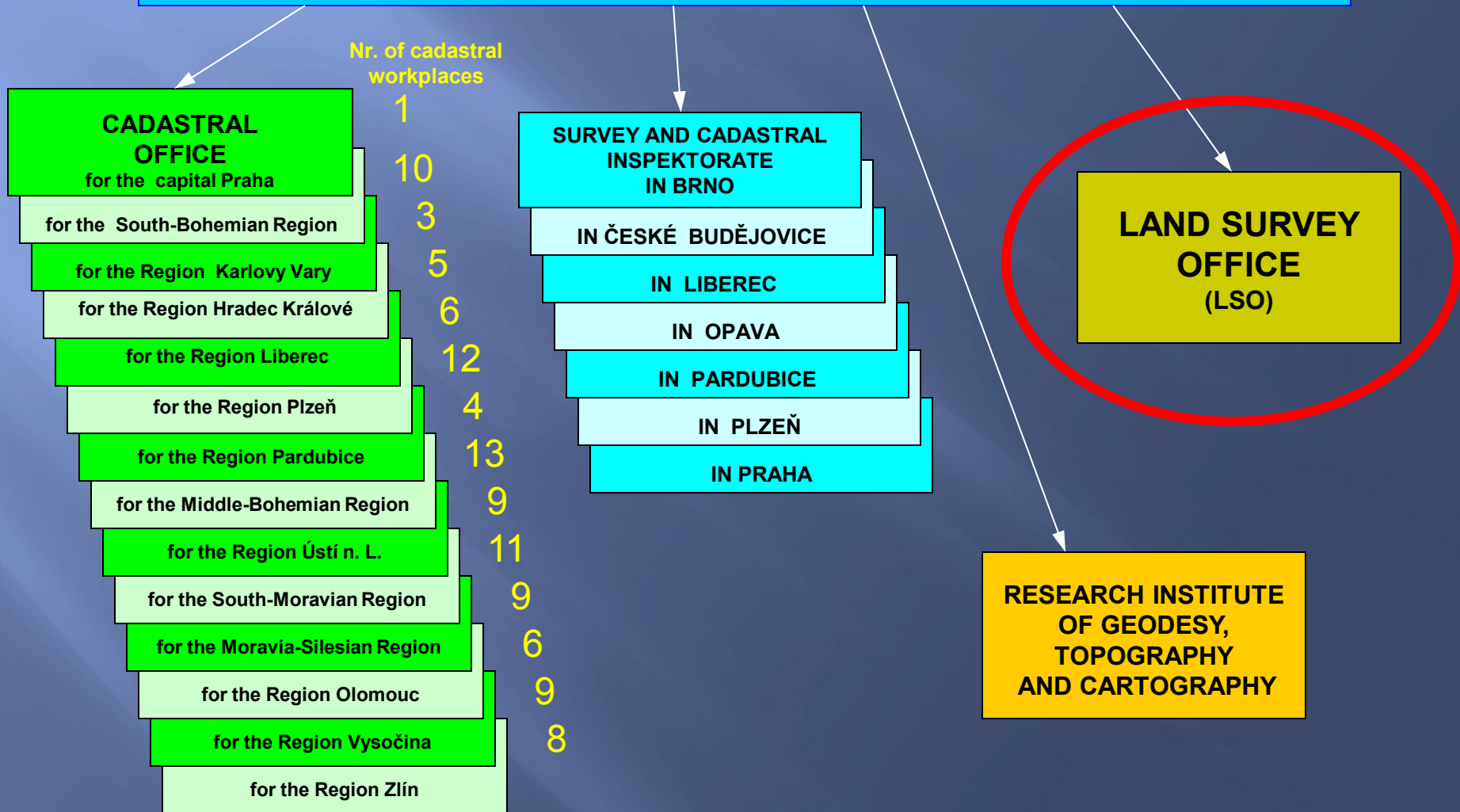
ZEMĚMĚŘICKÝ ÚŘAD

**LAND SURVEY OFFICE
(LSO)**

PRAHA 2010

Organisational chart of the COSMC sector

CZECH OFFICE FOR SURVEYING, MAPPING AND CADASTRE (COSMC)





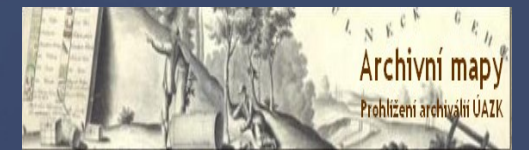
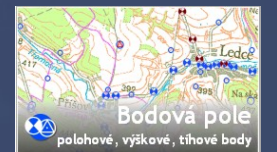
Land Survey Office

- administrative body for surveying in the Czech Republic

- administration of geodetic control of the Czech republic;
- surveying at the state boundaries;
- administration of ZABAGED®;
- maintaining of a digital terrain models;
- creation of orthophotographic representation of the Czech republic;
- production of state map series;
- standardisation of geographical names;
- managing of the Central archives of surveying, mapping and cadastre



Data extending and services

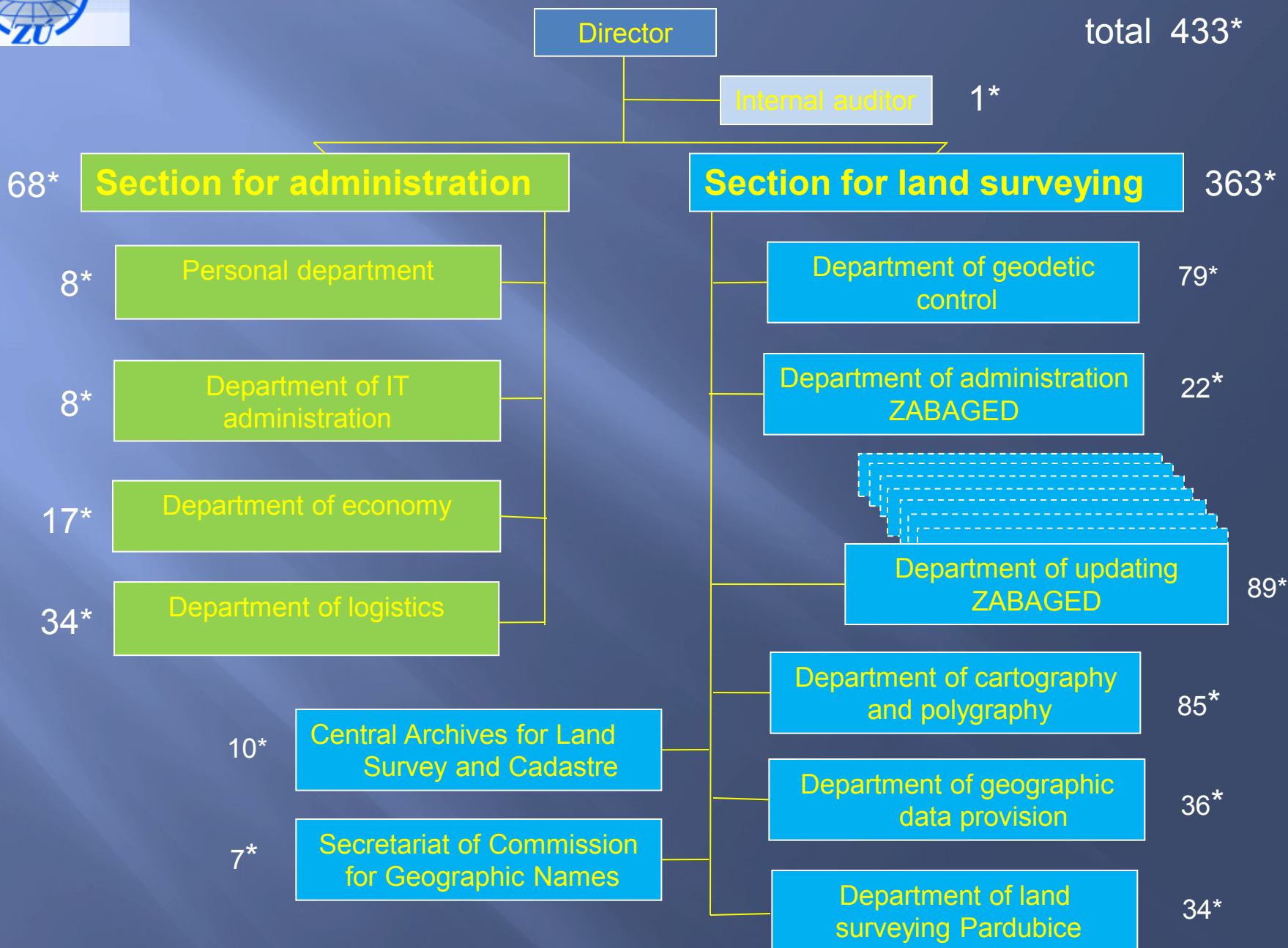




Organisational chart of the LSO

* employees

total 433*





Contemporary conditions

2004 – organisational changes;

till 2005 – period of digitalisation;

after 2005 – period of updating and data capture;

internal changes - new technologies;

**reducing of the staff 2004 : 523
 2010 : 433 (- 90 17%);**

number of users increases;

budget LSO: 2009 - 230 mil Kč (8,8 mil €);



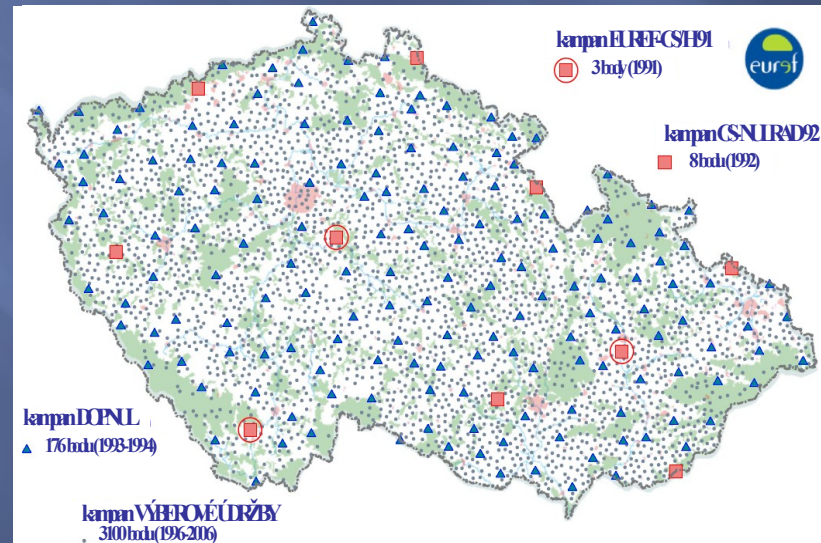
Administration of geodetic control

➤ maintenance and renewal of reference frame

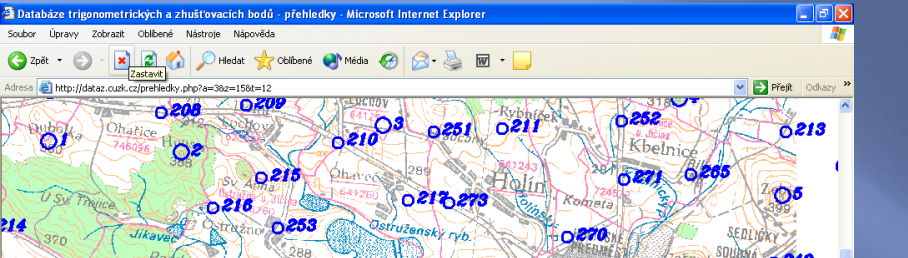
Geodetic control:

- 28 000 trigonometric points,
- 83 000 leveling points,
- 500 gravimetric points.

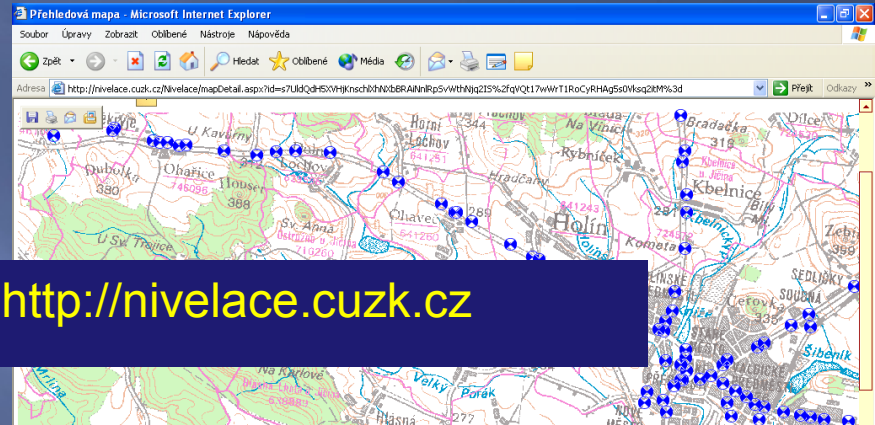
➤ implementing of a dynamic maintenance based on the communication with users – mostly private surveyors



2 databases of trigonometric, levelling and gravimetric control stations published on the Internet, free of charge



<http://dataz.cuzk.cz> <http://nivelace.cuzk.cz>



Databáze trigonometrických a zhušťovacích bodů - geodetické údaje bodu - Microsoft Internet Explorer

Adresa: <http://dataz.cuzk.cz/gu.php?1=1582=1263=00894>

GEODETICKÉ ÚDAJE

trigonometrického bodu

vyvořeno pro web 21.09.2004

Líst č.: 1/1

Stav k: 2002

TL	1512
ZM-50	03-34
SMO-5	040906

vápence

x	Nadmořská výška	
	Bpv	vztahuje se na
1012363.67	289.66	hranol

Nivelace - Microsoft Internet Explorer

Adresa: <http://nivelace.cuzk.cz/nivelace/outPut.aspx?id=1a0TmZzZ4vGhnuuZucWTzCz2pKf3vFTyYCLVpkyMc%2B17A154gH%2fZskNGjvmlU0%3d>

NIVELAČNÍ ÚDAJE

Niveláční pořad: Dbc Mladá Boleslav-Jičín

Předchozí bod	Niveláční bod	Délka v km		Nadmořská výška Bpv	Výška z roku
		oddlu	od počátku		
Dbc-79.1	Dbc-79.2	0.240	35.638	279.540 m	1986

Místopisný popis: Jičín, dům čp.304

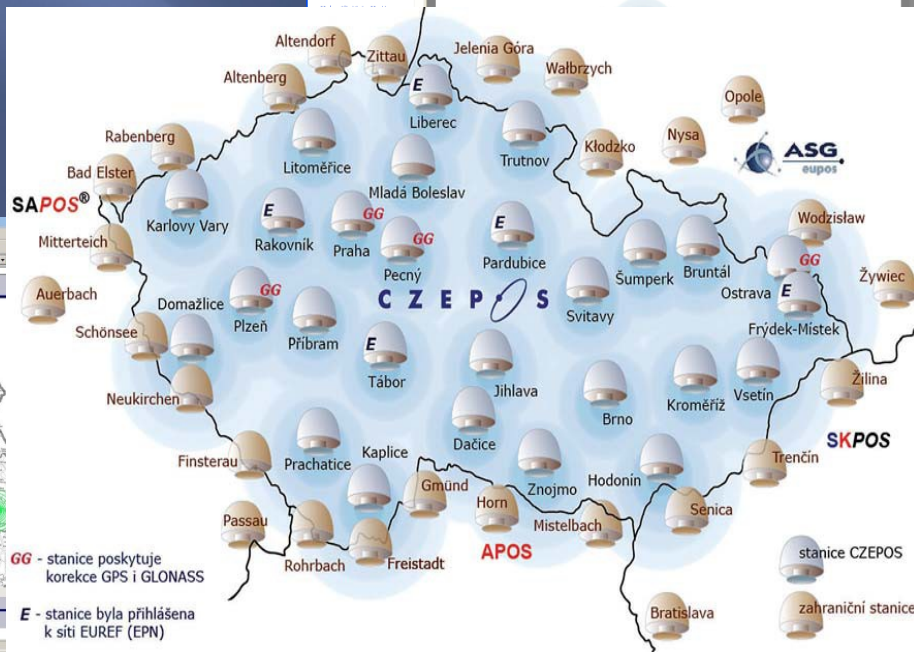
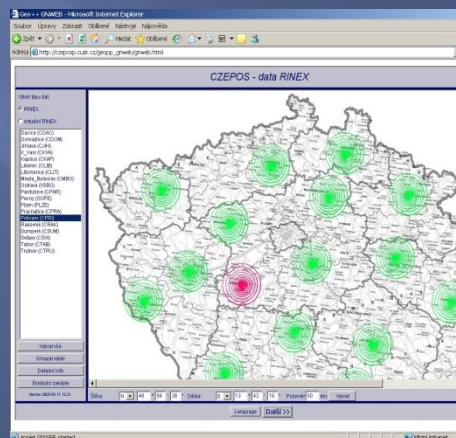
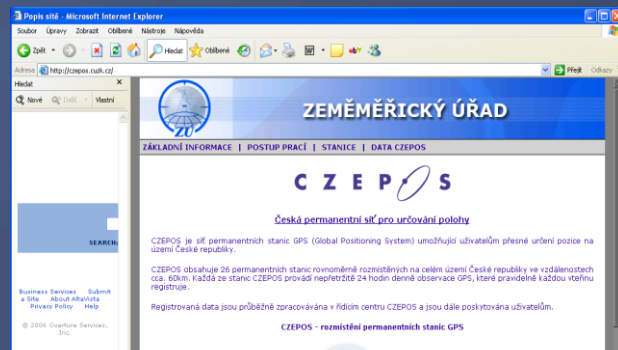
Poznámky:

Stav a stáří objektu: značka 0,4 m nad zemí zachovalá omltnutá jednopatrová cihlová stavba s kamennou podezdívkou z roku 1962

Úz. jednotka: 360400101 Vlastník:



CZEPOS - Czech Network of the Permanent GNSS Stations





Surveying and maintenance of the state boundaries

- period of transformation and updating of state boundaries documentation from a graphical to a digital form and specifications of positioning coordinates of all break point of the state border,
- state border documentation administrator – Ministry of interior,
- processing coordination by the international boundary commissions of neighbour countries.

