



Research centre  
for toxic compounds  
in the environment

# Ecotoxicological bioassays



Jakub Hofman & Klára Hilscherová



Research centre  
for toxic compounds  
in the environment

# Introduction

# Protection of environment / nature

- Is and must be primary aim of **sustainably developing society**
- why? – discussion (ecosystem services, human, ethics ...)

## How to protect ?

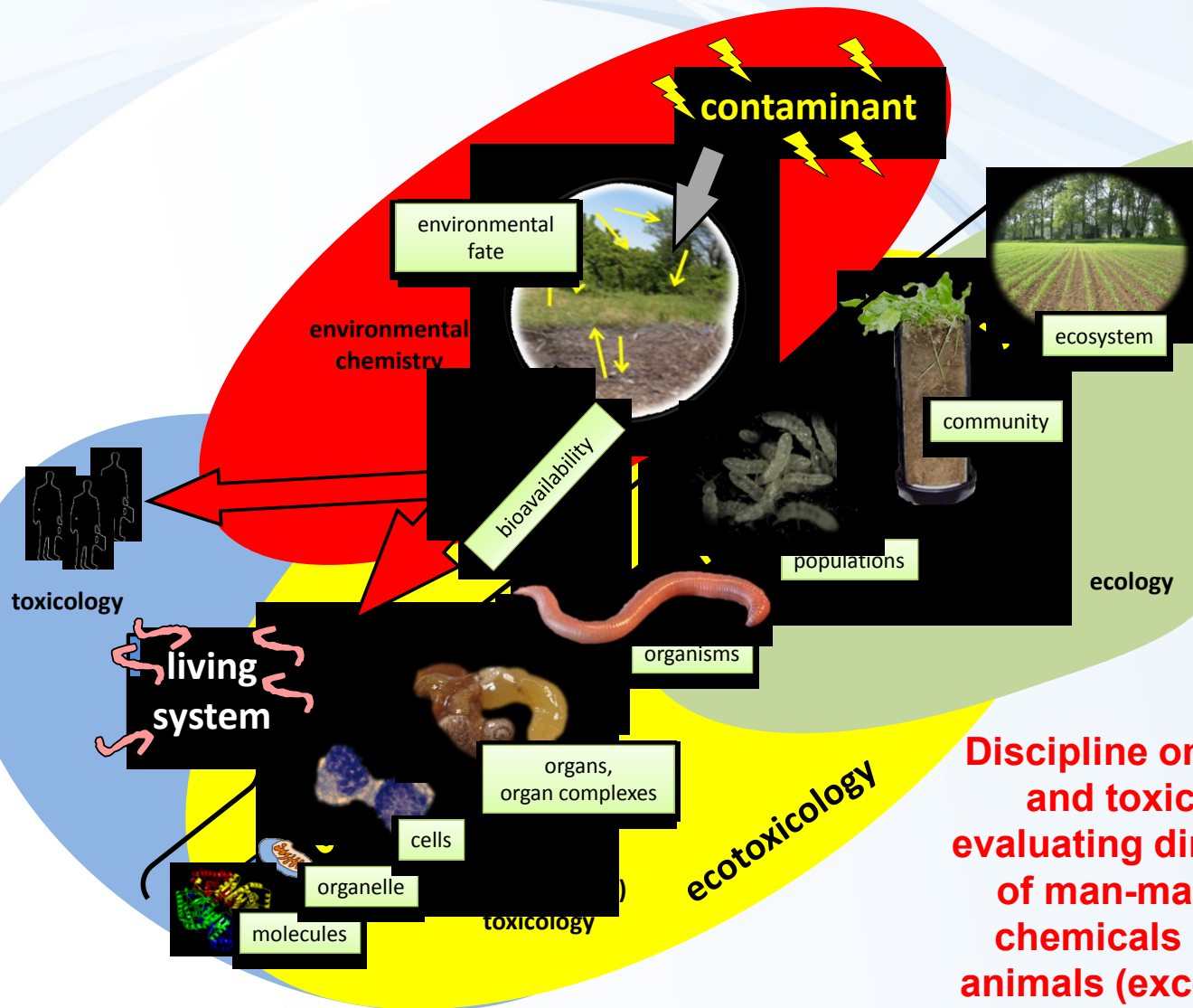
- Policy
- Legislation
- Research
- Education

**Ecotoxicology – offers knowledge and tools useful for the effective and reasonable environmental protection**

**tools = ecotoxicological bioassays**



# Ecotoxicology

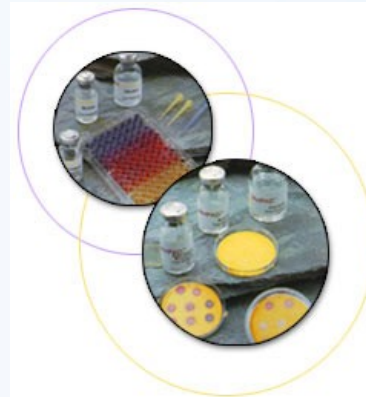


**Discipline on the border of ecology and toxicology studying and evaluating direct and indirect effects of man-made or natural harmful chemicals or other stressors on animals (except human), plants and microorganisms at all levels of biological organization**



# Ecotoxicity bioassay, ecotoxicity test

- **a tool (method, procedure ...)** for ecotoxicological research and praxis – for environmental legislation and protection
- biota (tissue, organism, population, ecosystem ...) is exposed to chemicals (and/or other factors), in the lab (controlled conditions) or in the field (less controlled) and effects are evaluated and related to exposure
- **WHY?** To understand the cause-effects relationships (causality, dose-response ...)



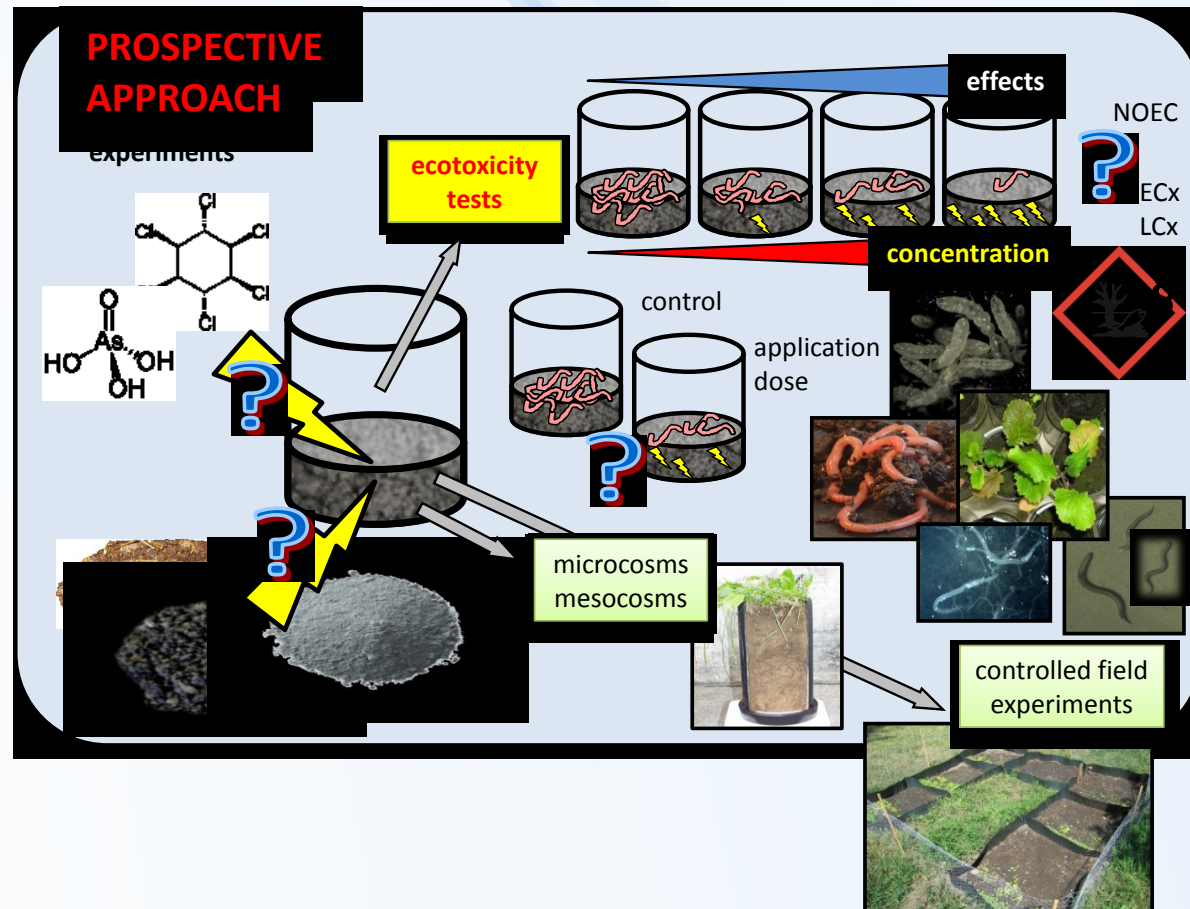
# Why bioassays?

**Chemical analyses only are not able to identify risks properly because:**

- 1) Real exposure is different – **bioavailability** in particular situation
- 2) Pollutant **mixture** - always in real ecosystems
- 3) **Matrix** itself has effects or interacts with effects of contaminants
- 4) Analytical methods are **limited** vs. wide spectrum of possibly toxic chemicals

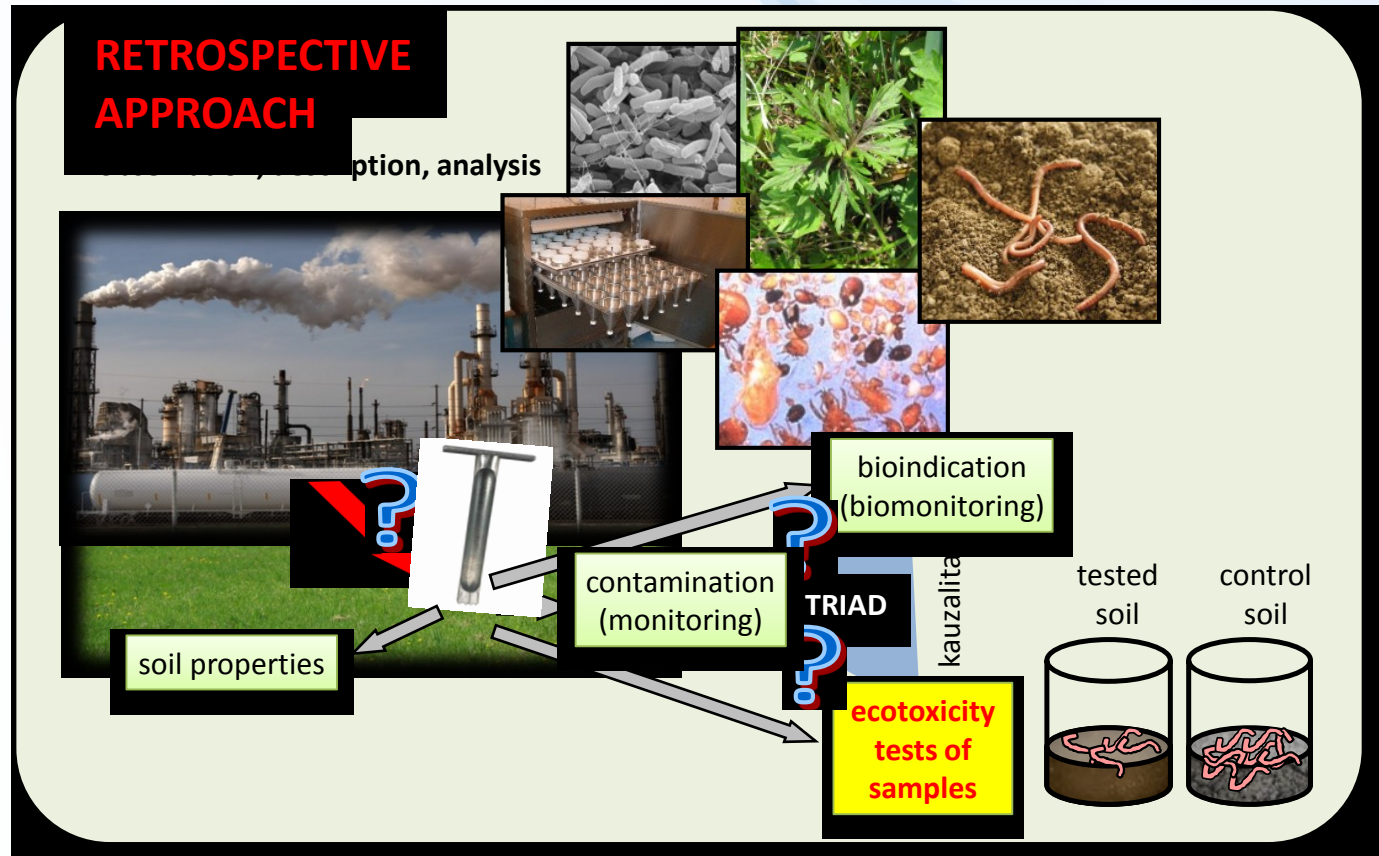
# Bioassays useful for:

- prospective ecological risk assessment
  - using bioassays for chemical compounds, pesticides
  - using bioassays for materials, mixtures
  - before they enter the environment



# Bioassays useful for:

- retrospective ecological risk assessment
  - using bioassays for real environmental samples
  - searching the causalities between pollution and effects



# Bioassays useful for:

Time: NOW !

**RISK ASSESSMENT**

PROSPECTIVE

**RISK ASSESSMENT**

RETROSPECTIVE

DISASTERS

PREDICTIONS for future

Bioassessment  
Field assessment  
Monitoring

Bioassessment  
Field assessment  
Monitoring

MIXTURES OF CHEMICALS  
CONTAMINATED ENVIRONMENT

Lab studies

Lab studies

MIXTURES OF  
TOXICANTS

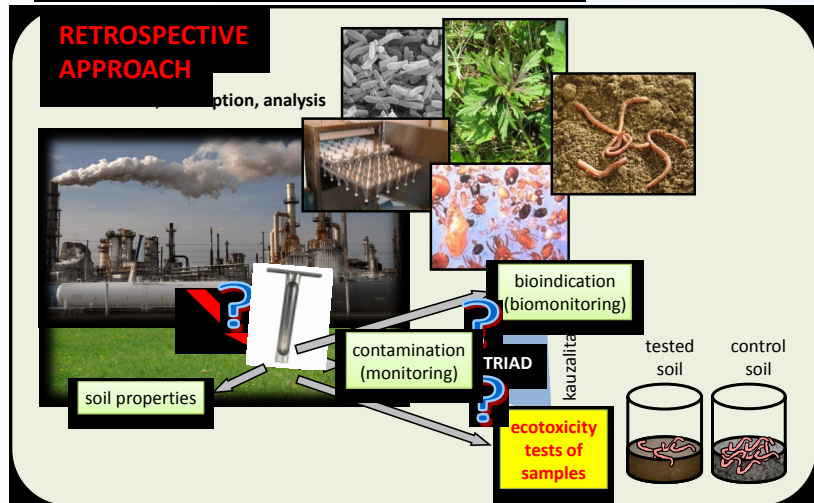
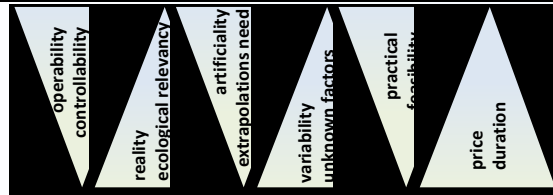
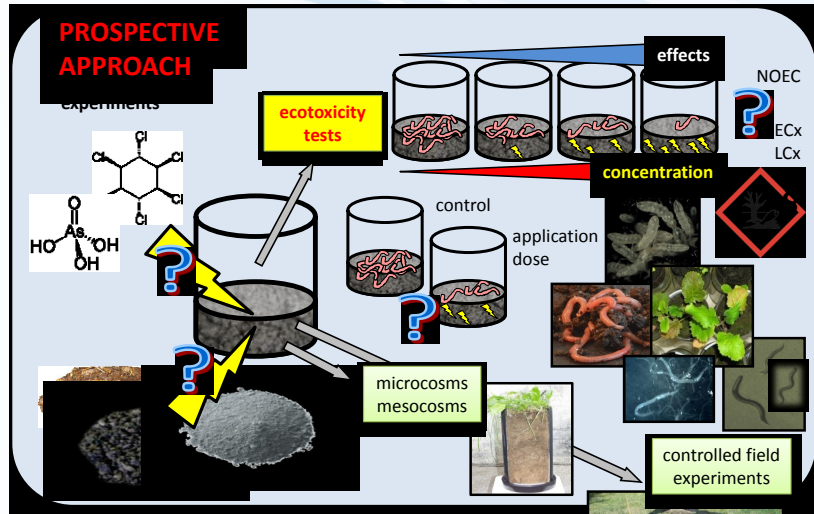
INDIVIDUAL  
TOXICANTS

Simulated small  
ecosystems





# Bioassays useful for:





# Bioassay development

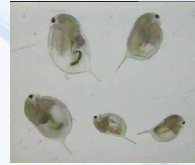
- **old bioassays** – acute, ecologically irrelevant, testing pure chemicals, pesticides
- **new bioassays** – sublethal endpoints, ecological relevancy, chemical mixtures, miniaturization, simple to measure endpoints



# Differentiation of bioassays

- major trophic levels

- producers
- consumers
- destruenters



- aquatic / soil

- single / multiple species

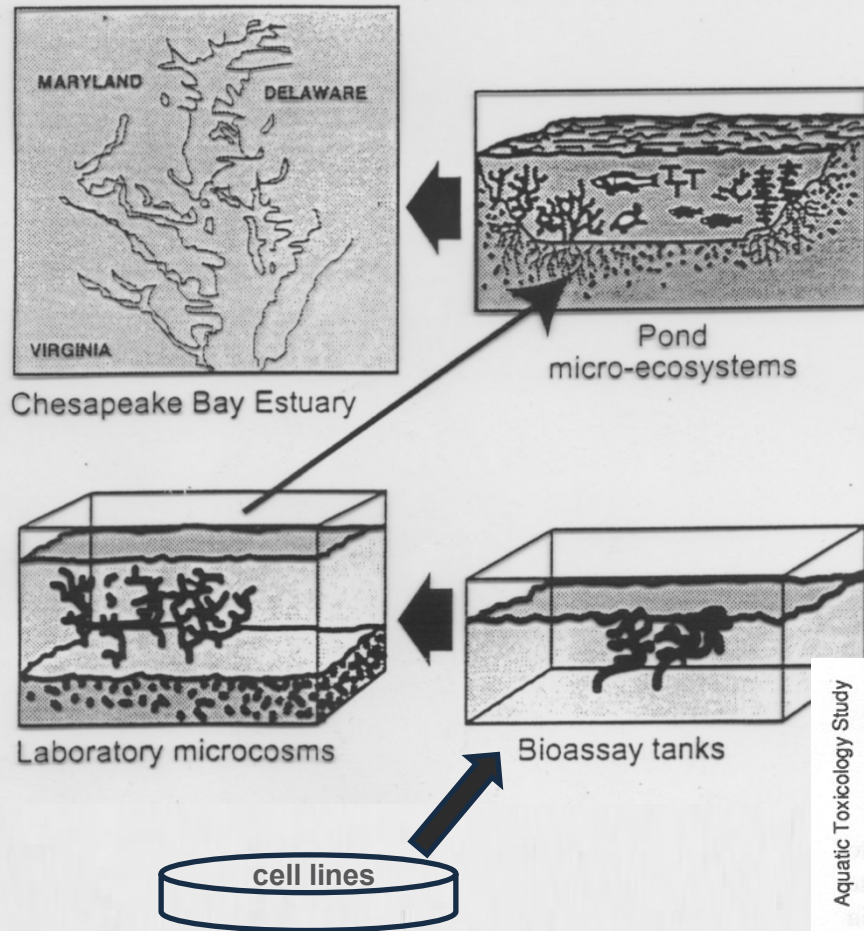
- acute / chronic effects

- contact bioassays / eluate bioassays / TIE

- legislative / standardized (practical) / experimental (research)

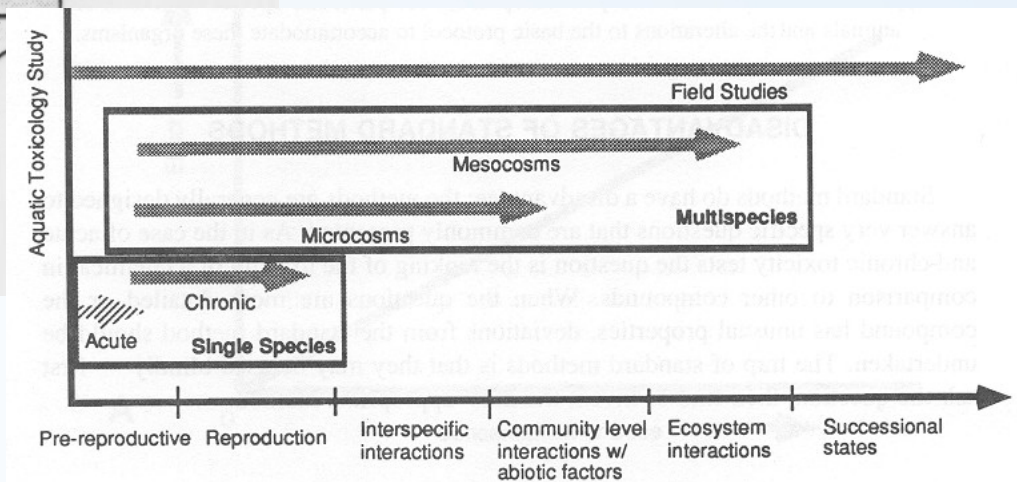
- toxicity / bioaccumulation / biodegradation tests

# Differentiation of bioassays



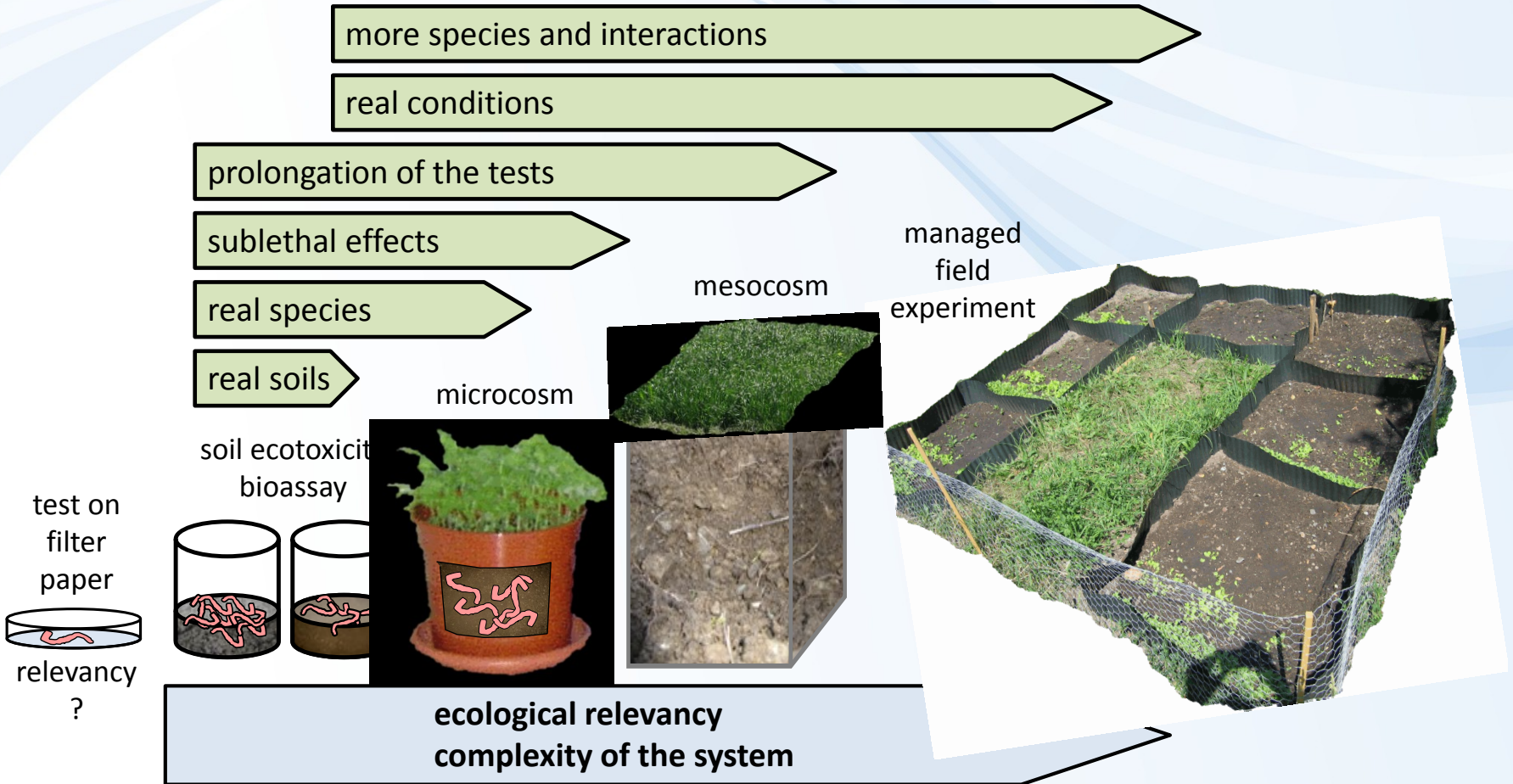
size, complexity  
 ecological relevancy  
 controlling the conditions  
 old / fresh contamination  
 no. of species

...



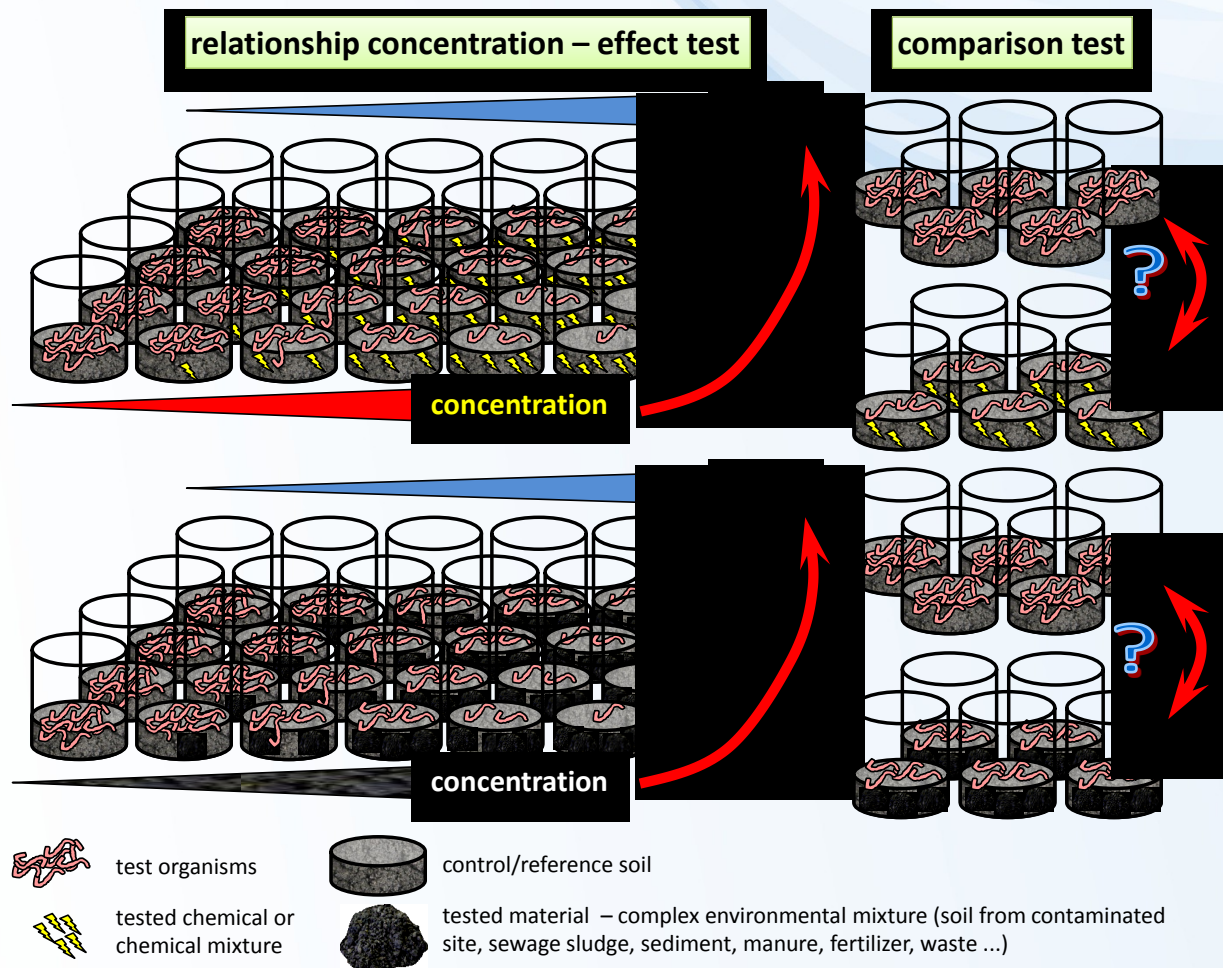


# Differentiation of bioassays



# Differentiation of bioassays

- limit test / comparison test
- concentration – response tests – preliminary, final

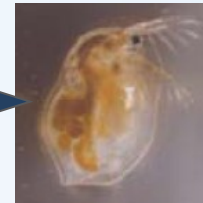


# Use of bioassays

- Testing toxicity of natural **contaminated matrices**
  - Rather new in ecotoxicology – many open challenges
    - Whole effluent toxicity testing (WET)
    - Contact soil toxicity assays
  - More complex and more complicated
    - „cause-effects“ often not clear
      - Natural variability in matrices
      - Algal tests - nutrients (Nitrogen, Phosphorus) >> Toxic compounds



eluate 1:10



Control  
soil

Mixture at  
different  
ratios





## Aquatic organisms

Test No. 201: Alga, Growth Inhibition Test	11 July 2006
Test No. 221: Lemna sp. Growth Inhibition Test	11 July 2006
Test No. 202: Daphnia sp. Acute Immobilisation Test	23 Nov 2004
Test No. 211: Daphnia magna Reproduction Test	16 Oct 2008
Test No. 203: Fish, Acute Toxicity Test	17 July 1992
Test No. 204: Fish, Prolonged Toxicity Test: 14-Day Study	04 Apr 1984
Test No. 210: Fish, Early-Life Stage Toxicity Test	17 July 1992
Test No. 212: Fish, Short-term Toxicity Test on Embryo and Sac-Fry Stages	21 Sep 1998
Test No. 215: Fish, Juvenile Growth Test	21 Jan 2000
Test No. 229: Fish Short Term Reproduction Assay	08 Sep 2009
Test No. 230: 21-day Fish Assay	08 Sep 2009
Test No. 231: Amphibian Metamorphosis Assay	08 Sep 2009

## Sediment organisms

Test No. 218: Sediment-Water Chironomid Toxicity Using Spiked Sediment	23 Nov 2004
Test No. 219: Sediment-Water Chironomid Toxicity Using Spiked Water	23 Nov 2004
Test No. 233: Sediment-Water Chironomid Life-Cycle Toxicity Test Using Spiked Water or Spiked Sediment	23 July 2010
Test No. 225: Sediment-Water Lumbriculus Toxicity Test Using Spiked Sediment	15 Oct 2007

## Soil organisms

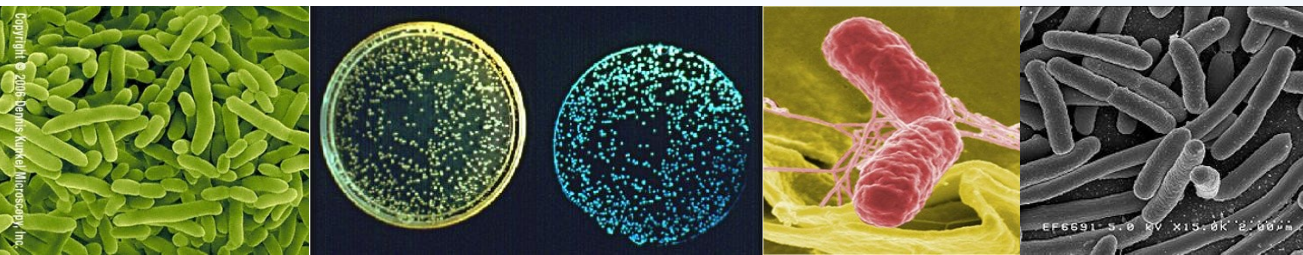
Test No. 208: Terrestrial Plant Test: Seedling Emergence and Seedling Growth Test	17 Aug 2006
Test No. 227: Terrestrial Plant Test: Vegetative Vigour Test	17 Aug 2006
Test No. 207: Earthworm, Acute Toxicity Tests	04 Apr 1984
Test No. 220: Enchytraeid Reproduction Test	23 Nov 2004
Test No. 222: Earthworm Reproduction Test ( <i>Eisenia fetida</i> / <i>Eisenia andrei</i> )	23 Nov 2004
Test No. 228: Determination of Developmental Toxicity of a Test Chemical to Dipteran Dung Flies( <i>Scathophaga stercoraria</i> L. ( <i>Scathophagidae</i> ), <i>Musca autumnalis</i> De Geer ( <i>Muscidae</i> ))	16 Oct 2008
Test No. 232: Collembolan Reproduction Test in Soil	08 Sep 2009
Test No. 226: Predatory mite ( <i>Hypoaspis</i> ( <i>Geolaelaps</i> ) <i>aculeifer</i> ) reproduction test in soil	16 Oct 2008
Test No. 216: Soil Microorganisms: Nitrogen Transformation Test	21 Jan 2000
Test No. 217: Soil Microorganisms: Carbon Transformation Test	21 Jan 2000

## Other tests

Test No. 213: Honeybees, Acute Oral Toxicity Test	21 Sep 1998
Test No. 214: Honeybees, Acute Contact Toxicity Test	21 Sep 1998
Test No. 205: Avian Dietary Toxicity Test	04 Apr 1984
Test No. 206: Avian Reproduction Test	04 Apr 1984
Test No. 223: Avian Acute Oral Toxicity Test	23 July 2010

## Aquatic microorganisms

ISO 10712:1995	Water quality -- <b><u>Pseudomonas putida growth inhibition test</u></b> (Pseudomonas cell multiplication inhibition test)
ISO 11348-1:2007	Water quality -- Determination of the inhibitory effect of water samples on the <b><u>light emission of Vibrio fischeri</u></b> (Luminescent bacteria test) -- Part 1: Method using freshly prepared bacteria
ISO 11348-2:2007	Water quality -- Determination of the inhibitory effect of water samples on the light emission of Vibrio fischeri (Luminescent bacteria test) -- Part 2: Method using liquid-dried bacteria
ISO 11348-3:2007	Water quality -- Determination of the inhibitory effect of water samples on the light emission of Vibrio fischeri (Luminescent bacteria test) -- Part 3: Method using freeze-dried bacteria
ISO 13641-1:2003	Water quality -- Determination of inhibition of gas production of anaerobic bacteria -- Part 1: General test
ISO 13641-2:2003	Water quality -- Determination of inhibition of gas production of anaerobic bacteria -- Part 2: Test for low biomass concentrations
ISO 13829:2000	Water quality -- Determination of the genotoxicity of water and waste water using the <b><u>umu-test</u></b>
ISO 16240:2005	Water quality -- Determination of the genotoxicity of water and waste water -- Salmonella/microsome test ( <b><u>Ames test</u></b> )
ISO/DIS 11350	Water quality -- Determination of the genotoxicity of water and waste water -- Salmonella/microsome fluctuation test (Ames fluctuation test)
ISO 15522:1999	Water quality -- Determination of the inhibitory effect of water constituents on the growth of activated sludge microorganisms
ISO 21338:2010	Water quality -- Kinetic determination of the inhibitory effects of sediment, other solids and coloured samples on the light emission of Vibrio fischeri ( <b><u>kinetic luminescent bacteria test</u></b> )
ISO 8192:2007	Water quality -- Test for inhibition of oxygen consumption by activated sludge for carbonaceous and ammonium oxidation
ISO 9509:2006	Water quality -- Toxicity test for assessing the inhibition of nitrification of activated sludge microorganisms



## Aquatic plants

ISO 20079:2005	Water quality -- Determination of the toxic effect of water constituents and waste water on duckweed ( <i>Lemna minor</i> ) -- <a href="#">Duckweed growth inhibition test</a>
ISO 8692:2004	Water quality -- Freshwater <a href="#">algal growth inhibition test</a> with unicellular green algae
ISO/CD 16191	Water quality - Determination of the toxic effect of sediment and soil on the growth behaviour of <i>Myriophyllum aquaticum</i> - <a href="#">Myriophyllum test</a>
ISO 10253:2006	Water quality -- Marine algal growth inhibition test with <i>Skeletonema costatum</i> and <i>Phaeodactylum tricoratum</i>
ISO 10710:2010	Water quality -- Growth inhibition test with the marine and brackish water macroalga <i>Ceramium tenuicorne</i>
ISO 14442:2006	Water quality -- Guidelines for algal growth inhibition tests with poorly soluble materials, volatile compounds, metals and waste water
ISO/DIS 13308	Water quality -- Toxicity test based on reproduction inhibition of the green macroalga <i>Ulva pertusa</i>
ISO/TR 11044:2008	Water quality -- Scientific and technical aspects of batch algae growth inhibition tests





## Aquatic invertebrates

ISO 6341:1996	Water quality -- Determination of the inhibition of the mobility of <u><a href="#">Daphnia magna</a></u> Straus (Cladocera, Crustacea) -- <u><a href="#">Acute toxicity test</a></u>
ISO 10706:2000	Water quality -- Determination of <u><a href="#">long term toxicity of substances to Daphnia magna</a></u> Straus (Cladocera, Crustacea)
ISO/DIS 14380	Water quality -- Determination of the <u><a href="#">acute toxicity to Thamnocephalus platyurus</a></u> (Crustacea, Anostraca)
ISO/CD 16303	Water quality -- Determination of toxicity of <u><a href="#">fresh water sediments using Hyalella azteca</a></u>
ISO 10872:2010	Water quality -- Determination of the toxic effect of sediment and soil samples on growth, fertility and <u><a href="#">reproduction of Caenorhabditis elegans</a></u> (Nematoda)
ISO 16712:2005	Water quality -- Determination of acute toxicity of marine or estuarine sediment to amphipods
ISO 20665:2008	Water quality -- Determination of chronic toxicity to Ceriodaphnia dubia
ISO 20666:2008	Water quality -- Determination of the chronic toxicity to Brachionus calyciflorus in 48 h
ISO 14669:1999	Water quality -- Determination of acute lethal toxicity to marine copepods (Copepoda, Crustacea)
ISO/DIS 14371	Water quality -- Determination of freshwater-sediment subchronic toxicity to Heterocypris incongruens (Crustacea, Ostracoda)
ISO 7828:1985	Water quality -- Methods of biological sampling -- Guidance on handnet sampling of aquatic benthic macro-invertebrates
ISO 8265:1988	Water quality -- Design and use of quantitative samplers for benthic macro-invertebrates on stony substrata in shallow freshwaters
ISO 8689-1:2000	Water quality -- Biological classification of rivers -- Part 1: Guidance on the interpretation of biological quality data from surveys of benthic macroinvertebrates
ISO 8689-2:2000	Water quality -- Biological classification of rivers -- Part 2: Guidance on the presentation of biological quality data from surveys of benthic macroinvertebrates
ISO/DIS 10870	Water quality -- Guidelines for the selection of sampling methods and devices for benthic macroinvertebrates in fresh waters
ISO/WD 16778	Water quality -- Calanoid copepod development test with Acartia tonsa



## Aquatic vertebrates

ISO 15088:2007	Water quality -- Determination of the acute toxicity of <u>waste water to zebrafish eggs</u> (Danio rerio)
ISO 7346-1:1996	Water quality -- Determination of the <u>acute lethal toxicity of substances to a freshwater fish</u> [Brachydanio rerio Hamilton-Buchanan (Teleostei, Cyprinidae)] -- Part 1: Static method
ISO 7346-2:1996	Water quality -- Determination of the acute lethal toxicity of substances to a freshwater fish [Brachydanio rerio Hamilton-Buchanan (Teleostei, Cyprinidae)] -- Part 2: Semi-static method
ISO 7346-3:1996	Water quality -- Determination of the acute lethal toxicity of substances to a freshwater fish [Brachydanio rerio Hamilton-Buchanan (Teleostei, Cyprinidae)] -- Part 3: Flow-through method
ISO 10229:1994	Water quality -- Determination of the prolonged toxicity of substances to freshwater fish -- Method for evaluating the effects of substances on the <u>growth rate of rainbow trout</u> (Oncorhynchus mykiss Walbaum (Teleostei, Salmonidae))
ISO 12890:1999	Water quality -- Determination of toxicity to embryos and larvae of freshwater fish -- Semi-static method
ISO 21427-1:2006	Water quality -- Evaluation of genotoxicity by measurement of the induction of micronuclei -- Part 1: Evaluation of genotoxicity using amphibian larvae
ISO 21427-2:2006	Water quality -- Evaluation of genotoxicity by measurement of the induction of micronuclei -- Part 2: Mixed population method using the cell line V79
ISO 23893-1:2007	Water quality -- Biochemical and physiological measurements on fish -- Part 1: Sampling of fish, handling and preservation of samples
ISO/TS 23893-2:2007	Water quality -- Biochemical and physiological measurements on fish -- Part 2: Determination of ethoxyresorufin-O-deethylase (EROD)
ISO/CD 23893-3	Water quality -- Biochemical and physiological measurements on fish -- Part 3: Determination of vitellogenin







## Soil microorganisms

ISO 10381-6:2009	Soil quality -- Sampling -- Part 6: Guidance on the collection, handling and storage of soil under aerobic conditions for the assessment of microbiological processes, biomass and diversity in the laboratory
ISO 14240-1:1997	Soil quality -- Determination of soil microbial biomass -- Part 1: Substrate-induced respiration method
ISO 14240-2:1997	Soil quality -- Determination of soil microbial biomass -- Part 2: Fumigation-extraction method
ISO 16072:2002	Soil quality -- Laboratory methods for determination of microbial soil respiration
ISO 17155:2002	Soil quality -- Determination of abundance and activity of soil microflora using respiration curves
ISO 15685:2004	Soil quality -- Determination of potential nitrification and inhibition of nitrification -- Rapid test by ammonium oxidation
ISO 14238:1997	Soil quality -- Biological methods -- Determination of nitrogen mineralization and nitrification in soils and the influence of chemicals on these processes
ISO 23753-1:2005	Soil quality -- Determination of dehydrogenase activity in soils -- Part 1: Method using triphenyltetrazolium chloride (TTC)
ISO 23753-2:2005	Soil quality -- Determination of dehydrogenase activity in soils -- Part 2: Method using iodotetrazolium chloride (INT)
ISO/DIS 11063	Soil quality -- Method to directly extract DNA from soil samples
ISO/TS 29843-1:2010	Soil quality -- Determination of soil microbial diversity -- Part 1: Method by phospholipid fatty acid analysis (PLFA) and phospholipid ether lipids (PLEL) analysis
ISO/PRF TS 29843-2	Soil quality -- Determination of soil microbial diversity -- Part 2: Method by phospholipid fatty acid analysis (PLFA) using the simple PLFA extraction method
ISO/TS 10832:2009	Soil quality -- Effects of pollutants on mycorrhizal fungi -- Spore germination test
ISO/TS 22939:2010	Soil quality -- Measurement of enzyme activity patterns in soil samples using fluorogenic substrates in micro-well plates
ISO 11266:1994	Soil quality -- Guidance on laboratory testing for biodegradation of organic chemicals in soil under aerobic conditions
ISO 15473:2002	Soil quality -- Guidance on laboratory testing for biodegradation of organic chemicals in soil under anaerobic conditions
ISO 14239:1997	Soil quality -- Laboratory incubation systems for measuring the mineralization of organic chemicals in soil under aerobic conditions

## Soil invertebrates

ISO 11268-1:1993	Soil quality -- <b>Effects of pollutants on earthworms (<i>Eisenia fetida</i>)</b> -- Part 1: Determination of acute toxicity using artificial soil substrate
ISO 11268-2:1998	Soil quality -- Effects of pollutants on earthworms ( <i>Eisenia fetida</i> ) -- Part 2: Determination of effects on reproduction
ISO 11268-3:1999	Soil quality -- Effects of pollutants on earthworms -- Part 3: Guidance on the determination of effects in field situations
ISO 11267:1999	Soil quality -- <b>Inhibition of reproduction of <i>Collembola (Folsomia candida)</i></b> by soil pollutants
ISO 16387:2004	Soil quality -- <b>Effects of pollutants on <i>Enchytraeidae (Enchytraeus sp.)</i></b> -- Determination of effects on reproduction and survival
ISO 15952:2006	Soil quality -- Effects of pollutants on juvenile land snails (Helicidae) -- Determination of the effects on growth by soil contamination
ISO 20963:2005	Soil quality -- Effects of pollutants on insect larvae ( <i>Oxythyrea funesta</i> ) -- Determination of acute toxicity
ISO 17512-1:2008	Soil quality -- Avoidance test for determining the quality of soils and effects of chemicals on behaviour -- Part 1: Test with earthworms ( <i>Eisenia fetida</i> and <i>Eisenia andrei</i> )
ISO/DIS 17512-2	Soil quality -- Avoidance test for determining the quality of soils and effects of chemicals on behaviour -- Part 2: Test with collembolans ( <i>Folsomia candida</i> )
ISO 23611-1:2006	Soil quality -- Sampling of soil invertebrates -- Part 1: Hand-sorting and formalin extraction of earthworms
ISO 23611-2:2006	Soil quality -- Sampling of soil invertebrates -- Part 2: Sampling and extraction of micro-arthropods ( <i>Collembola</i> and <i>Acarina</i> )
ISO 23611-3:2007	Soil quality -- Sampling of soil invertebrates -- Part 3: Sampling and soil extraction of enchytraeids
ISO 23611-4:2007	Soil quality -- Sampling of soil invertebrates -- Part 4: Sampling, extraction and identification of soil-inhabiting nematodes
ISO/DIS 23611-5	Soil quality -- Sampling of soil invertebrates -- Part 5: Sampling and extraction of soil macro-invertebrates
ISO/DIS 23611-6	Soil quality -- Sampling of soil invertebrates -- Part 6: Guidance for the design of sampling programmes with soil invertebrates





## Plants

ISO 11269-1:1993	Soil quality -- Determination of the effects of pollutants on soil flora -- Part 1: Method for the measurement of <b><u>inhibition of root growth</u></b>
ISO 11269-2:2005	Soil quality -- Determination of the effects of pollutants on soil flora -- Part 2: Effects of chemicals on the emergence and growth of higher plants
ISO 17126:2005	Soil quality -- Determination of the effects of pollutants on soil flora -- Screening test for emergence of lettuce seedlings ( <i>Lactuca sativa</i> L.)
ISO 22030:2005	Soil quality -- Biological methods -- <b><u>Chronic toxicity in higher plants</u></b>
ISO/CD 29200	Soil quality -- Assessment of genotoxic effects on higher plants -- Micronucleus test on <i>Vicia faba</i>



# Aquatic

- [850.1010 - Aquatic Invertebrate Acute Toxicity, Test, Freshwater Daphnids \(PDF\) \(10 pp, 36K\)](#)
- [850.1020 - Gammarid Acute Toxicity Test \(PDF\) \(11 pp, 36K\)](#)
- [850.1025 - Oyster Acute Toxicity Test \(Shell Deposition\) \(PDF\) \(9 pp, 32K\)](#)
- [850.1035 - Mysid Acute Toxicity Test \(PDF\) \(10 pp, 34K\)](#)
- [850.1045 - Penaeid Acute Toxicity Test \(PDF\) \(9 pp, 32K\)](#)
- [850.1055 - Bivalve Acute Toxicity Test \(Embryo Larval\) \(PDF\) \(7 pp, 27K\)](#)
- [850.1075 - Fish Acute Toxicity Test, Freshwater And Marine \(PDF\) \(13 pp, 45K\)](#)
- [850.1085 - Fish Acute Toxicity Mitigated By Humic Acid \(PDF\) \(10 pp, 35K\)](#)
- [850.1300 - Daphnid Chronic Toxicity Test \(PDF\) \(12 pp, 42K\)](#)
- [850.1350 - Mysid Chronic Toxicity Test \(PDF\) \(10 pp, 36K\)](#)
- [850.1400 - Fish Early-Life Stage Toxicity Test \(PDF\) \(15 pp, 66K\)](#)
- [850.1500 - Fish Life Cycle Toxicity \(PDF\) \(4 pp, 16K\)](#)
- [850.1710 - Oyster BCF \(PDF\) \(14 pp, 50K\)](#)
- [850.1730 - Fish BCF \(PDF\) \(25 pp, 74K\)](#)
- [850.1735 - Whole Sediment Acute Toxicity Invertebrates, Freshwater \(PDF\) \(19 pp, 65K\)](#)
- [850.1740 - Whole Sediment Acute Toxicity Invertebrates, Marine \(PDF\) \(14 pp, 50K\)](#)
- [850.1790 - Chironomid Sediment Toxicity Test \(PDF\) \(16 pp, 57K\)](#)
- [850.1800 - Tadpole/Sediment Subchronic Toxicity Test \(PDF\) \(15 pp, 49K\)](#)
- [850.1850 - Aquatic Food Chain Transfer \(PDF\) \(4 pp, 16K\)](#)
- [850.1900 - Generic Freshwater Microcosm Test, Laboratory \(PDF\) \(28 pp, 76K\)](#)
- [850.1925 - Site-Specific Aquatic Microcosm Test, Laboratory \(PDF\) \(21 pp, 91K\)](#)
- [850.1950 - Field Testing For Aquatic Organisms \(PDF\) \(7 pp, 21K\)](#)
- [850.4400 - Aquatic Plant Toxicity Test Using Lemna Spp., Tiers I and II \(PDF\) \(10 pp, 36K\)](#)
- [850.4450 - Aquatic Plants Field Study, Tier III \(PDF\) \(9 pp, 30K\)](#)
- [850.5400 - Algal Toxicity, Tiers I and II \(PDF\) \(11 pp, 42K\)](#)
- [850.6800 - Modified Activated Sludge, Respiration Inhibition Test for Sparingly Soluble Chemicals \(PDF\) \(9 pp, 37K\)](#)



## Soil

- [850.2450 - Terrestrial \(Soil-Core\) Microcosm Test \(PDF\) \(19 pp, 123K\)](#)
- [850.4000 - Background-Nontarget Plant Testing \(PDF\) \(15 pp, 50K\)](#)
- [850.4025 - Target Area Phytotoxicity \(PDF\) \(15 pp, 51K\)](#)
- [850.4100 - Terrestrial Plant Toxicity, Tier I \(Seedling Emergence\) \(PDF\) \(8 pp, 29K\)](#)
- [850.4150 - Terrestrial Plant Toxicity, Tier I \(Vegetative Vigor\) \(PDF\) \(8 pp, 28K\)](#)
- [850.4200 - Seed Germination/Root Elongation Toxicity Test \(PDF\) \(8 pp, 29K\)](#)
- [850.4225 - Seedling Emergence, Tier II \(PDF\) \(10 pp, 36K\)](#)
- [850.4230 - Early Seedling Growth Toxicity Test \(PDF\) \(9 pp, 33K\)](#)
- [850.4250 - Vegetative Vigor, Tier II \(PDF\) \(10 pp, 35K\)](#)
- [850.4300 - Terrestrial Plants Field Study, Tier III \(PDF\) \(8 pp, 27K\)](#)
- [850.4600 - Rhizobium-Legume Toxicity \(PDF\) \(14 pp, 73K\)](#)
- [850.4800 - Plant Uptake and Translocation Test \(PDF\) \(13 pp, 35K\)](#)
- [850.5100 - Soil Microbial Community Toxicity Test \(PDF\) \(11 pp, 46K\)](#)
- [850.6200 - Earthworm Subchronic Toxicity Test \(PDF\) \(13 pp, 43K\)](#)

## Other

- [850.2100 - Avian Acute Oral Toxicity Test \(PDF\) \(11 pp, 38K\)](#)
- [850.2200 - Avian Dietary Toxicity Test \(PDF\) \(12 pp, 42K\)](#)
- [850.2300 - Avian Reproduction Test \(PDF\) \(16 pp, 53K\)](#)
- [850.2400 - Wild Mammal Acute Toxicity \(PDF\) \(5 pp, 18K\)](#)
- [850.2500 - Field Testing For Terrestrial Wildlife \(PDF\) \(43 pp, 115K\)](#)
- [850.3020 - Honey Bee Acute Contact Toxicity \(PDF\) \(8 pp, 27K\)](#)
- [850.3030 - Honey Bee Toxicity of Residues on Foliage \(PDF\) \(6 pp, 23K\)](#)
- [850.3040 - Field Testing for Pollinators \(PDF\) \(5 pp, 18K\)](#)



# Testing strategy

- **Battery of assays**
  - Fast screening tests (Vibrio fisheri bioluminescence, 30 min toxicity)
  - Standardized acute toxicity tests
  - Further studies with chronic assays
  - **Combine trophic levels! Combine exposure routes!**
- **Various purposes -> guidelines and recommendations**
  - REACH (EU - Registration, Evaluation and Authorisation of Chemicals)
  - Plant protection products + biocides
  - Veterinary and human pharmaceuticals
  - Waste materials ...
- **The most common set ups**
  - algae / D. magna / fish for aquatic environment
  - earthworm (enchytraeid/springtail) / plant for soil environment

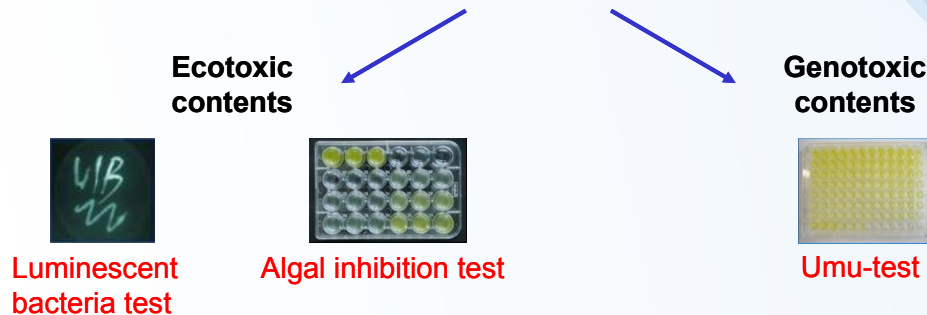


# Testing strategy

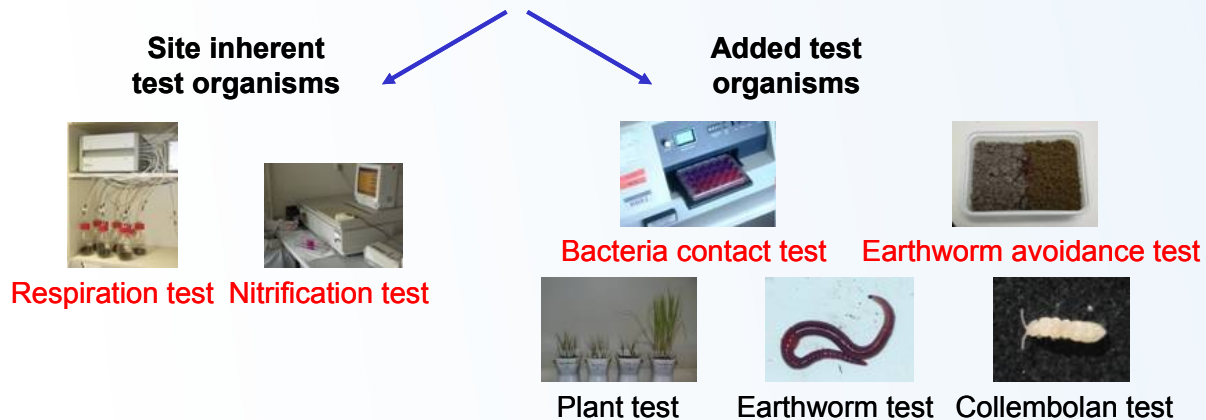
ISO 15799 (2003): Guidance on the ecotoxicological characterization of soils and soil materials

ISO 17616 (2008): Guidance on the choice and evaluation of bioassays for ecotoxicological characterization of soils and soil materials

## Retention function – Biotests with eluates



## Habitat function - Biotests with solids



# General scheme of bioassay

## 1) Prepare the organism

Culture media, standardized numbers, age, etc.

## 2) Prepare the sample

Dilution series

water/culture media – direct organism exposure

Include BLANK (medium only)

solvent for organic compounds – minimum to be added

Include SOLVENT CONTROL

## 3) Expose organisms

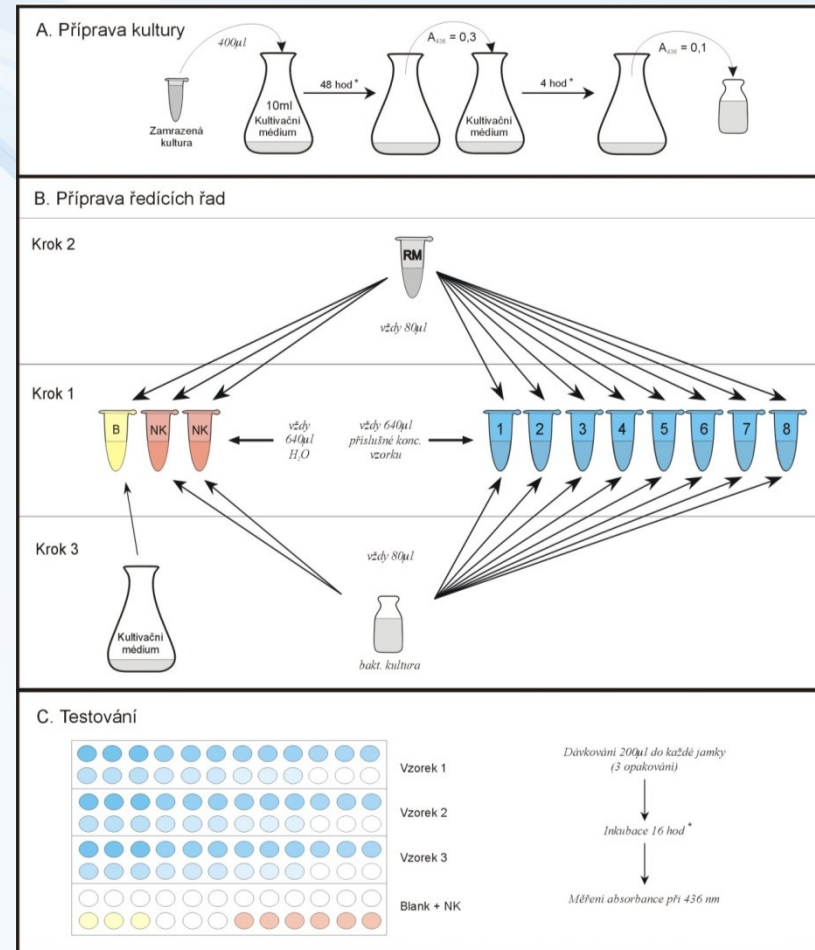
... for appropriate time, number of repetitions,  
under specified conditions

## 4) Evaluate and report results

measure the endpoint / count organisms

validity criteria

statistical evaluation (means, ANOVA, dose-response ...)

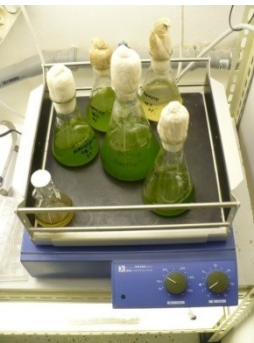




Research centre  
for toxic compounds  
in the environment

# Aquatic ecotoxicology bioassays

# Algal growth inhibition test (ISO 8692)



## Organisms

Freshwater species: *Selenastrum capricornutum*,  
*Scenedesmus subspicatus*, *Chlorella vulgaris*,  
*Microcystis aeruginosa*, *Anabaena flos-aquae*,  
*Navicula pelliculosa*;

Saltwater species: *Skeletonema costatum*,  
*Thalassiosira pseudonana*, and *Dunaliella tertiolecta*

Number of organisms  
per chamber ( $\pm 10\%$ )

*Selenastrum capricornutum* and other freshwater green algae  $2 \times 10^4$  cells/ml  
*Navicula pelliculosa*  $2 \times 10^4$  cells/ml  
*Microcystis aeruginosa*  $5 \times 10^4$  cells/ml  
*Anabaena flos-aquae*  $2 \times 10^4$  cells/ml  
Saltwater species  $2 \times 10^4$  cells/ml

## Experimental design

Test vessel type and size  
Test solution volume

Sterile Erlenmeyer flasks of borosilicate glass, any size  
Not to exceed 50% of the flask volume for tests  
conducted on a shaker, and not more than 20% of the  
flask volume for tests not conducted on a shaker

Number of replicate chambers  
per sample  
Test duration

2 or more  
96 h

## Physical and chemical parameters

Water temperature

$24 \pm 2^\circ\text{C}$  for freshwater green and blue-green algae  
 $20 \pm 2^\circ\text{C}$  for *Navicula pelliculosa* and other saltwater  
algae

Light quality  
Light intensity

Continuous "cool-white" fluorescent  
Should not vary by more than  $\pm 15\%$ :  
 $60 \mu\text{E m}^{-2}/\text{s}^{-1}$  ( $4300 \text{ lm}/\text{m}^2$ ) for freshwater diatoms and  
green algae  
 $30 \mu\text{E m}^{-2}/\text{s}^{-1}$  ( $2150 \text{ lm}/\text{m}^2$ ) for freshwater blue-green  
algae

Photoperiod  
Test solution pH

$82\text{--}90 \mu\text{E m}^{-2}/\text{s}^{-1}$  ( $5900$  to  $6500 \text{ lm}/\text{m}^2$ ) for *Thalassiosira*  
 $60 \mu\text{E m}^{-2}/\text{s}^{-1}$  ( $4300 \text{ lm}/\text{m}^2$ ) for *Skeletonema*  
14 h light/10 h dark for *Skeletonema*  
 $7.5 \pm 0.1$  for freshwater  
 $8.0 \pm 0.1$  for saltwater

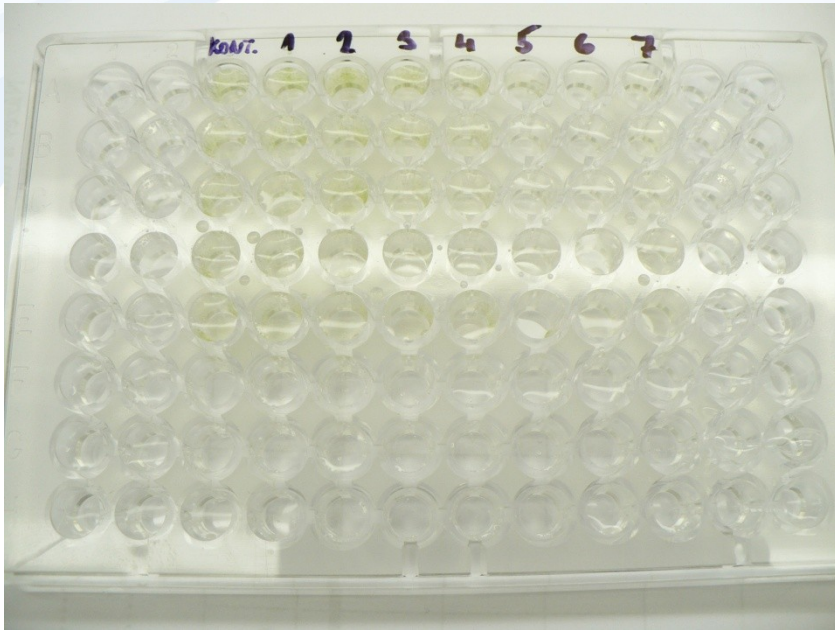
## Endpoint

Biomass, cell number, area underneath the growth curve



# Algal growth inhibition test (ISO 8692)

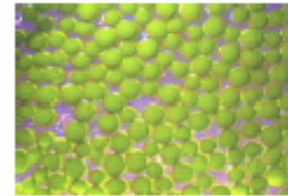
- Miniaturization



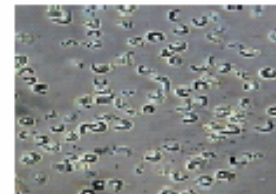
- Alternative: Algaltokit

## ALGALTOXKIT F™ MICROBIOTESTS

Cost-effective, culture/maintenance free\* bioassays with the micro-algae *Selenastrum capricornutum* (renamed *Raphidocoelis subcapitata*/*Pseudokirchneriella subcapitata*)



Algal beads (2 mm)  
> 1 million algal cells per bead



Algal cells

The micro-algae are included in the kits in “algal beads” from which they can be set free “on demand”

Each Algaltokit contains all the materials to perform two 72h growth inhibition tests



# Duckweed bioassay (ISO 20079)

- *Lemna minor*
- 10 leaves per 1 beaker
- pH 6.5; 10 000 lx; 24°C
- 96 hours
- growth, biomass, no. of leaves
- image analysis possible
- validity:
  - 8x increase in control
  - IC<sub>50</sub> for K<sub>2</sub>Cr<sub>2</sub>O<sub>7</sub> 10-60 mg/L



# Aquatic consumers - invertebrates

*Daphnia magna*



*Artemia salina*



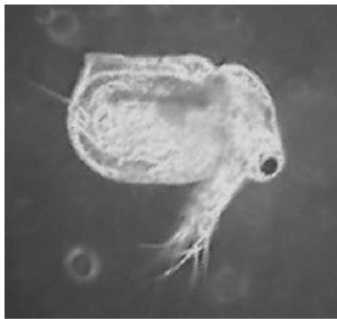
*Chironomus riparius*



*Potamopyrgus antipodarum*



*Ceriodaphnia dubia*



*Gammarus*



*Tamnocephalus platyurus*



*Hyalella azteca*



*Tubifex tubifex*



*Lumbriculus variegatus*





# *Daphnia magna* test (ISO 6341)

- 5 individuals per replicate (min 2 ml)
- no food
- 20°C; dark or 16h light / 8h dark
- 24h, 48h
- medium
  - $\text{CaCl}_2 \cdot 2\text{H}_2\text{O}$  11,76 g/l
  - $\text{MgSO}_4 \cdot 7\text{H}_2\text{O}$  4,93 g/l
  - $\text{NaHCO}_3$  2,59 g/l
  - KCl 0,23 g/l
  - 25 ml each to 1 L
  - pH 7.8
  - aeration



- no. of immobilized individuals
- validity:
  - $\text{O}_2 > 80\%$  (2 mg/l)
  - mortality in control 10 %

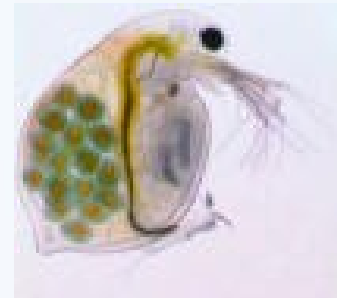
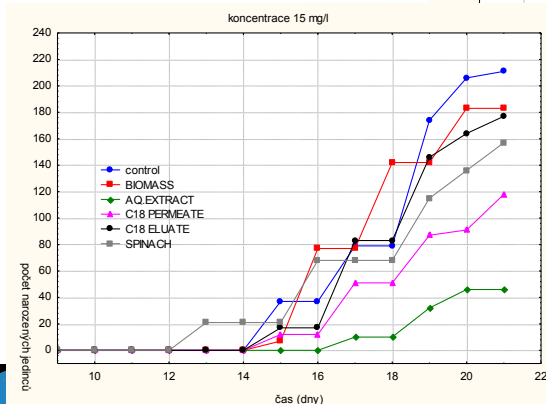
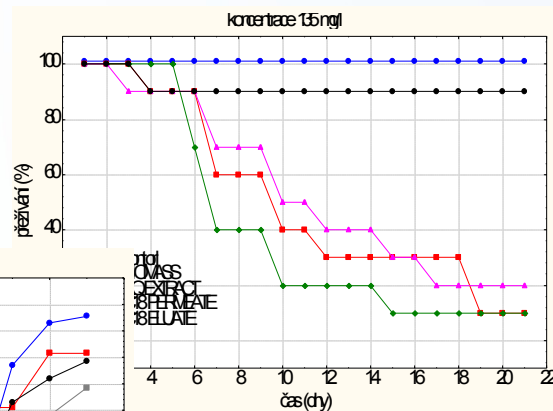


# Daphnia magna chronic test (ISO 10706)

- 10 juveniles (24h old) per replicate
- 50ml medium
- 3 times per week medium change
- 21 days

- 20 ± 2 °C
- pH 7-9
- dissolved O<sub>2</sub> > 3mg/l
- 16 h light / 8 h dark
- food - algae
- week controls: O<sub>2</sub>, T, pH

Mortality, survival  
Reproduction  
Juveniles  
Behavior

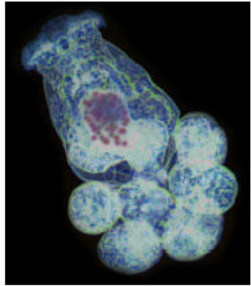


# Daphnia magna acute vs chronic test

Test type	Chronic (partial life cycle)	Acute 48 h
Organisms	<i>D. magna</i>	<i>D. magna</i>
Age of test organisms	24-h old	24-h old
Number of organisms per chamber	10	10 (minimum)
Experimental design		
Test vessel type and size	100 ml beakers	250 ml
Test solution volume	80 ml	200 ml
Number of replicates per sample	2 (minimum)	3 (minimum)
Feeding regime	Various combinations of trout chow, yeast, alfalfa, green algae, and diatoms given in excess	Do not feed
Test duration	21 days	48 hr
Physical and chemical parameters		
Water temperature	20°C	20 ± 2°C
Light quality	Ambient laboratory levels	Ambient laboratory levels
Light intensity	Up to 600 lux	540 to 1080 lux
Photoperiod	16 h light and 8 h dark (with 15- to 30-min transition)	16 h light and 8 h dark
pH range	7.0–8.6	7.0–8.6
DO concentration	40–100%	60–100%
Aeration	Not necessary	none
Endpoint	Survival, growth, and reproduction	Immobilization



# Alternative: microbiotests



\*Test organisms are included in the kits as "dormant eggs (cysts)" which can be hatched "on demand"

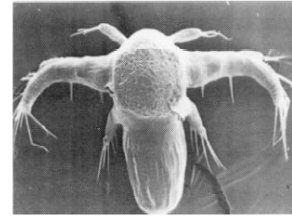
## ROTOXKIT F chronic

Contains all the materials to perform three 48h reproduction assays



## THAMNOTOXKIT F™ MICROBIOTESTS

With the crustacean *Thamnocephalus platyurus*



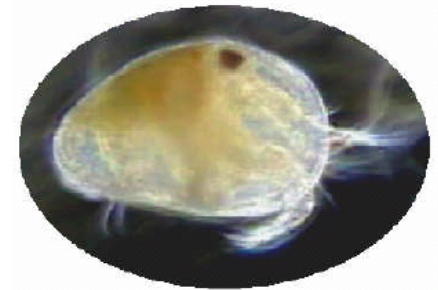
te  
in  
ia  
la



## OSTRACODTOXKIT F™ MICROBIOTESTS

FOR SEDIMENT TOXICITY TESTING

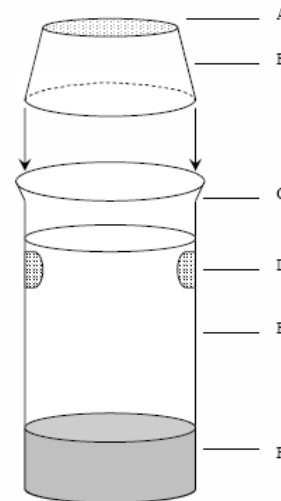
With the benthic crustacean *Heterocypris incongruens*





# *Chironomus riparius* test (OECD 218)

- 10 larvae (cca 10d old) per beaker
- OECD sediment
- 100 ml sediment / 175 ml water
- $20 \pm 2^\circ\text{C}$ ; food, aeration
- 16h light / 8h dark; controlled pH,  $\text{O}_2$
- 10 d
- survival and growth



A: the nylon screen  
B: the inverted plastic cups  
C: the lipless exposure beaker  
D: the water exchange screen ports  
E: water  
F: sediment





# Fish bioassays

Guppy, *Poecilia reticulata*



Fathead minnow, *Pimephales promelas* (USA)



acute tests (96 h)  
prolonged tests  
embryolarval tests  
chronic tests

- reproduction
- growth

Specific endpoints –  
genotoxicity, endocrine  
disruption

Zebrafish, *Danio rerio* (syn. *Brachydanio rerio*)



(Rainbow) trout  
(*Onchorhynchus sp.*)



Medaka, *Oryzias latipes*

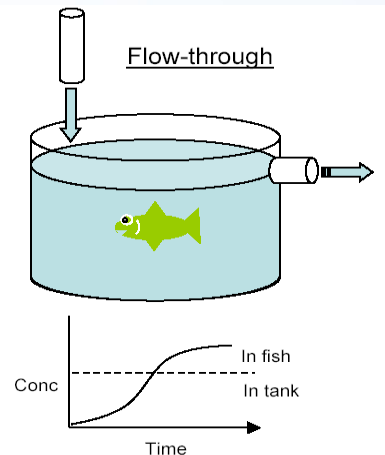
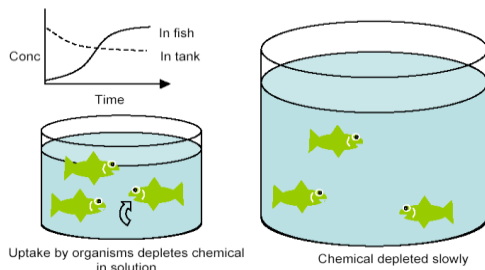
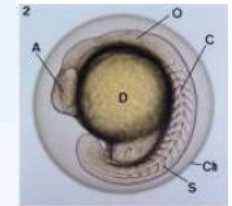
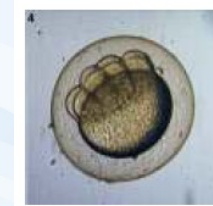


Nile tilapia, *Oreochromis niloticus*

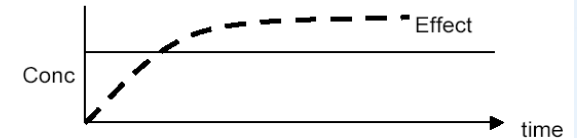


# Fish bioassay acute (ISO 7346 1-3)

- *Brachydanio rerio*, ...
- 26°C
- medium:
  - pH  $7,8 \pm 0,2$
  - $\text{CaCl}_2 \cdot 2\text{H}_2\text{O}$ ,  $\text{MgSO}_4 \cdot 7\text{H}_2\text{O}$ ,  $\text{NaHCO}_3$ ,  $\text{KCl}$
  - dissolved  $\text{O}_2 > 90\%$
- 24, 48, 72, 96 h
- validity: mortality in control < 10%,  $\text{O}_2$  etc.



**Continuous:**  
-exposure is function of duration



**Static renewal, with recovery:**  
-exposure is function of max conc'n



**Static renewal, no recovery:**  
-exposure is function of cumulative concentration



# Prolonged and chronic fish tests

## Prolonged

- OECD 204 – 14d, ISO 10229 - 21 d
- semistatic or flow through
- food; controlled pH, O<sub>2</sub>
- endpoints: breathing, gills, behavior, orientation, mortality
- 14-21d LC<sub>50</sub>, NOEC, LOEC

## Chronic

- OECD 210; US EPA OPPTS 850.1500
- 7 - 200 days
- starting with eggs or embryos or juveniles
- endpoints: survival, behavior, feeding, length, growth, weight, biochemical parameters, bioaccumulation

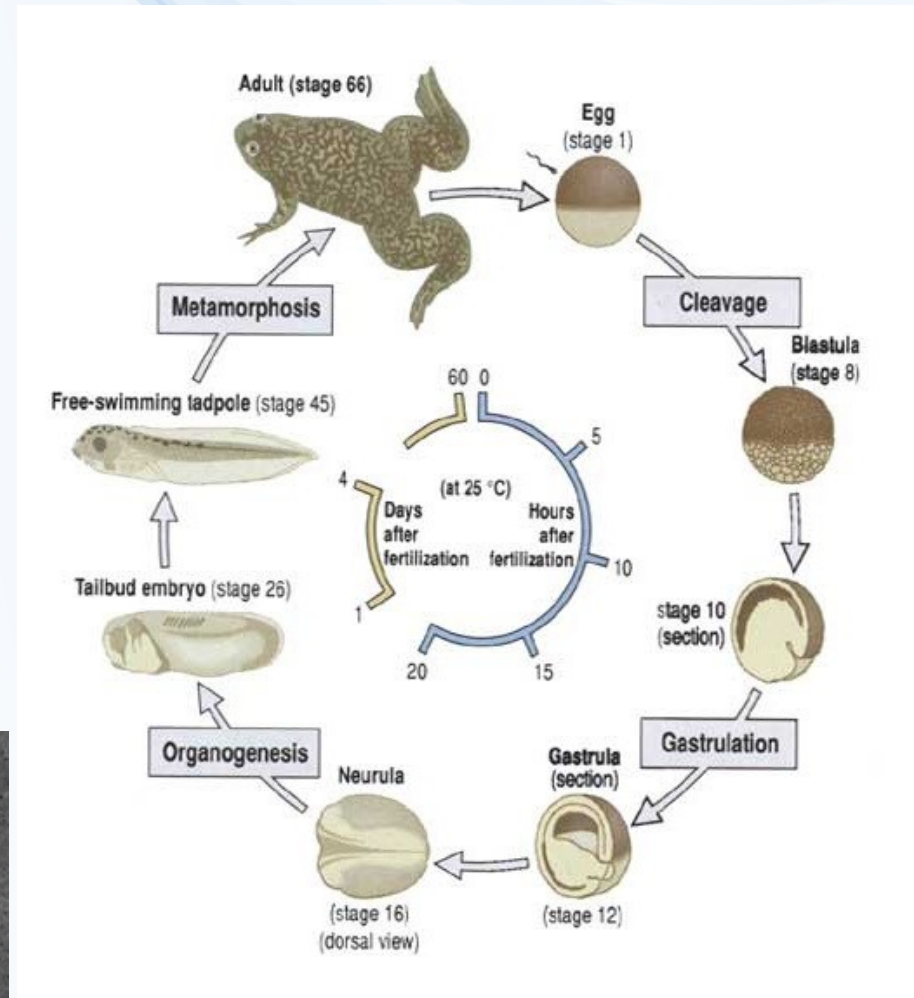
# Embryolarval test (ISO 12890, OECD 210, 212)

- 100 embryos per replicate
- 6-7 days
- no food
- T, pH, O<sub>2</sub>
- Endpoints: hatching, survival, morphology, behavior, weight, length, anomalies



# FETAX – Frog Embryo Teratogenicity Assay Xenopus

- Choriogonadotropin → eggs after 9-12h
- 25 embryos per Petri dish, 10 ml test solution
- 24°C; pH 6.5-9
- 96h
- validity:
  - 6-aminonicotinamid  
LC50 2,23 mg/ml, EC50 0,005 mg/ml
- mortality, growth, abnormalities
- Atlas of Abnormalities – John A. Bantle



# FETAX



NaCl
NaHCO <sub>3</sub>
KCl
CaCl <sub>2</sub>
CaSO <sub>4</sub> .2H <sub>2</sub> O
MgSO <sub>4</sub>
H <sub>2</sub> O
pH



**Table 4.11 The Frog Embryo Teratogenesis Assay: Xenopus (FETAX)**

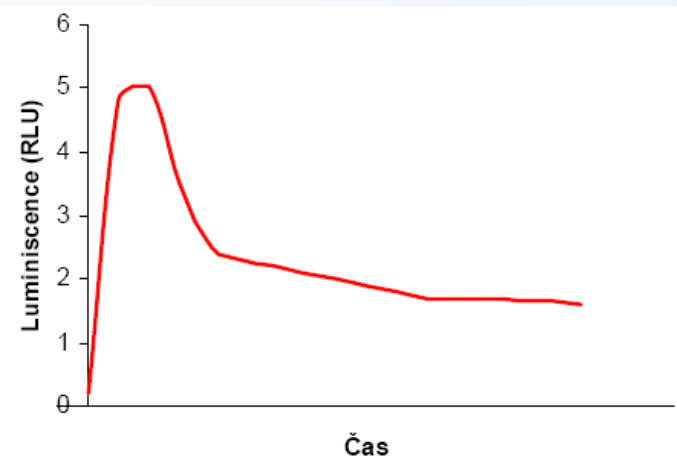
Test type	96 h static renewal
Organism	<i>Xenopus laevis</i>
Age of parent organism	Adult male: at least 2 years of age Adult female: at least 3 years of age
Size of parent organism	Adult male: 7.5–10 cm in crown-rump length Adult female: 10–12.5 cm in length
Feeding	Adult: three feedings per week of ground beef liver; liquid multiple vitamins should be added to the liver in concentrations from 0.05–0.075 cc/5 g liver
Experimental design	
Test vessel type and size	Adults: large aquarium or fiberglass or stainless steel raceways; side of tank should be opaque and at least 30 cm high. Breeding adults: 5- or 10-gallon aquarium fitted with a 1-cm mesh suspended approximately 3 cm from the bottom of the tank; nylon or plastic mesh is recommended; aquarium should be fitted with a bubbler to oxygenate the water; the top of aquarium should be covered with an opaque porous material such as a fiberglass furnace filter Embryos: 60-mm glass or 55-mm disposable polystyrene Petri dishes
Test solution volume	Adults: water depth should be 7-14 cm Embryos: 10 ml per dish
Exposure to test substance	Continuous throughout test
Replacement of test material	Every 24 h
Number of concentrations	5
Number of replicates per sample	2
Number of organisms per chamber	Adults: 4–6 per 1800 cm <sup>2</sup> of water surface area Breeding adults: 2 Embryos: 25
Test duration	96 h
Physical and chemical parameters	
Temperature	Adult: 23 ± 3°C Embryos: 24 ± 2°C
Photoperiod	12 h light / 12 h dark
pH range	6.5 to 9
TOC	10 mg/l
Alkalinity and hardness	Between 16 and 400 mg/l as CaCO <sub>3</sub>
Endpoint	Acute (mortality) and subacute (teratogenesis)

# *Vibrio fischeri* test (ISO 11348)

- 5-30 min
- luminiscence inhibition



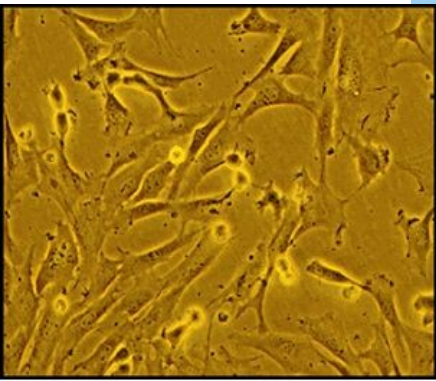
- problem with particles and colour  
→ flash test



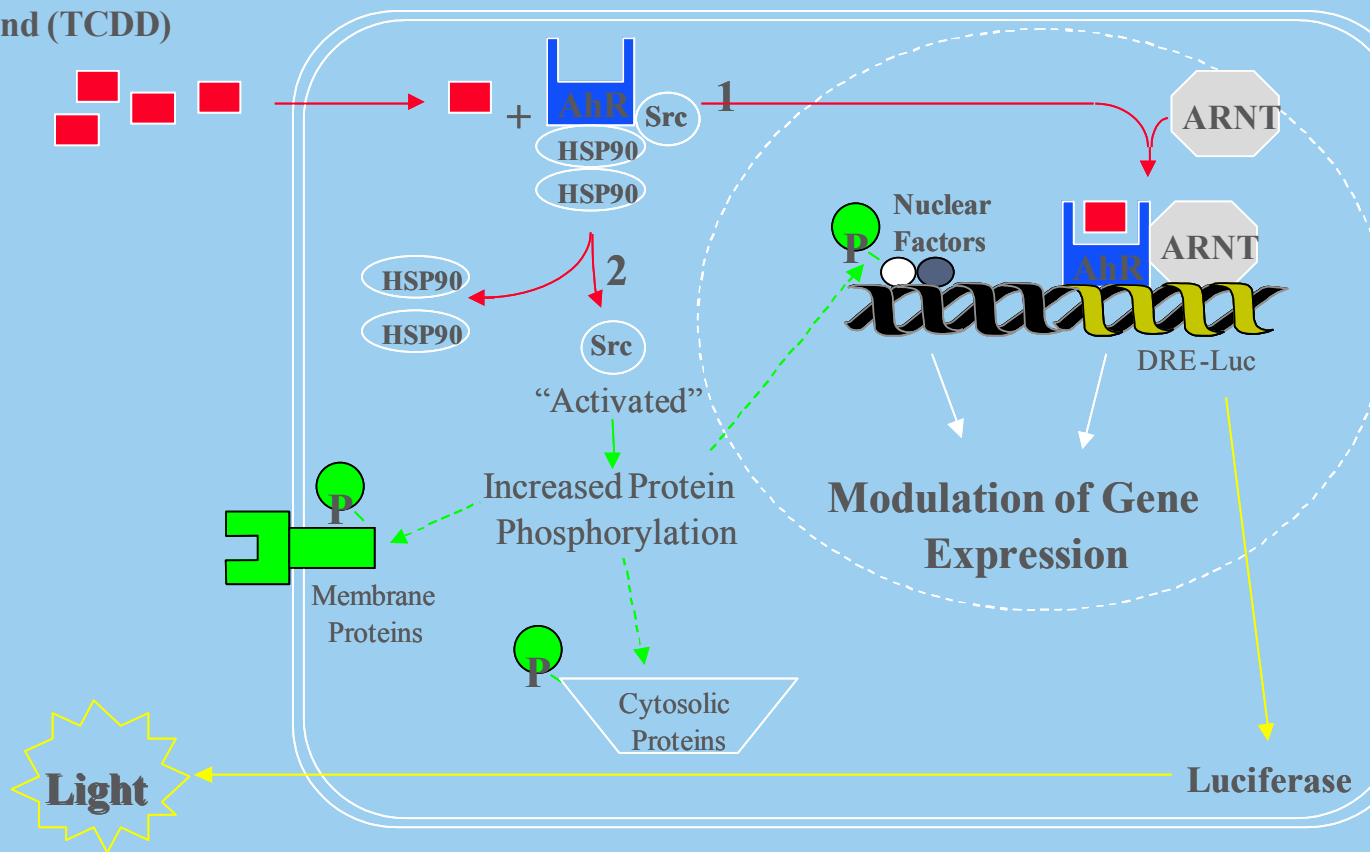


# Specific mechanisms of toxicity

- Cell lines (H4IIE.luc – diox.; MVLN, T47D.Luc – estrog.)
- Nuclear receptors (AhR, ER, AR, RAR/RXR)
- AhR/ER – luciferase reporter gene
- CALUX (Chemical Assisted LUCiferase eXpression)



Ligand (TCDD)





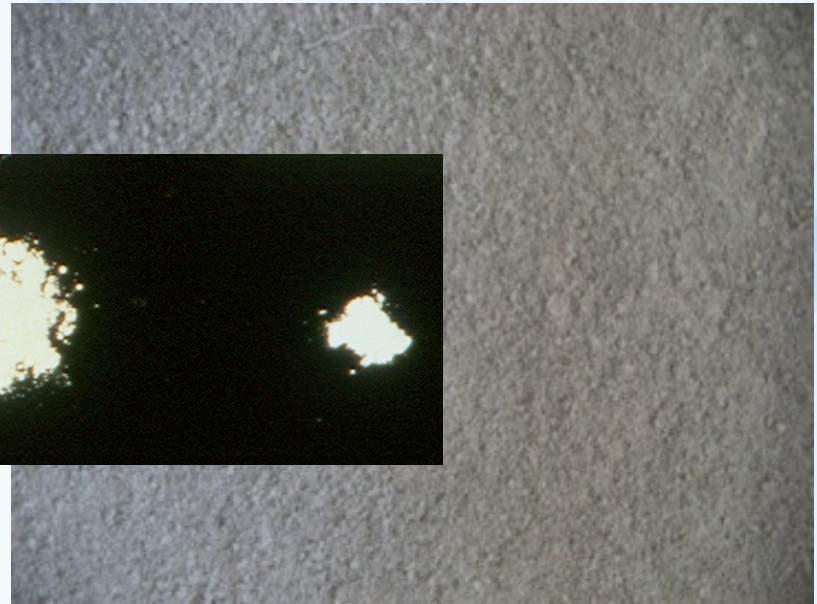
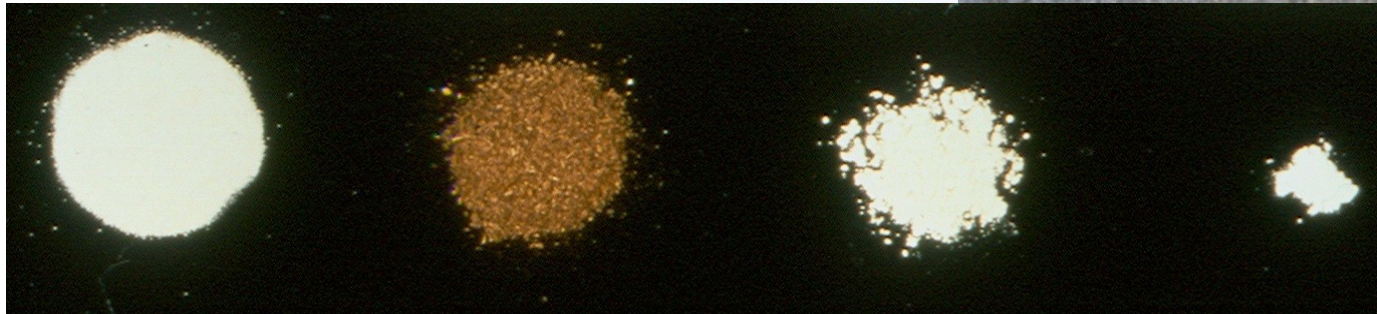


Research centre  
for toxic compounds  
in the environment

# Soil ecotoxicology bioassays

# Exposure methods

- Tested chemical mixed with soil
  - Artificial soil (OECD, ISO)
  - Real soil (LUFA 2.2 ...)



- Topic applications, injections, forced feeding ... not so relevant



# What is artificial soil ?



Soil component	Content expressed on % dry mass basis
• Sphagnum peat (air dried), finely ground and with no visible plant remains	10
• Kaolinite clay (air dried), containing not less than 30 % kaolinite	20
• Industrial quartz sand (air dried), predominantly fine sand with more than 50 % by mass of particle size 0,05-0,2 mm (amount dependent on calcium carbonate required)	70
• Calcium carbonate (CaCO <sub>3</sub> , pulverised, analytical grade) to obtain an initial pH of 6.0 ± 0.5	0.3-1.0

OECD 1984. Guideline for testing chemicals 207. Earthworm acute toxicity test.

- **Is standard medium for many soil bioassays ...**
- **Is much more relevant than solution, agar, filter paper ...**
- **Should solve problem of high variability of natural soils ...**
- **Should resemble natural loamy soil ...**
- **Should enable the toxicity extrapolation to natural soils ...**

# LUFA soil (<http://lufa-speyer.de/>)

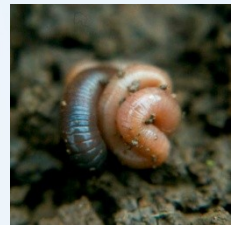
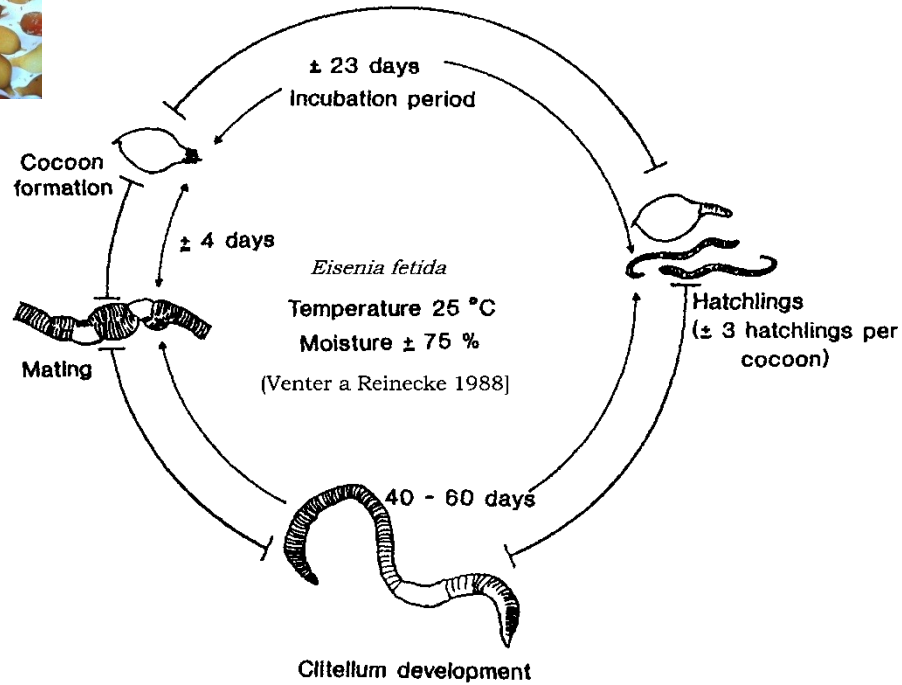
- Landwirtschaftliche Untersuchungs und Forschungsanstalt Speyer
- 4 EUR / 1 kg



	LUFA 2.1	LUFA 2.2	LUFA 2.3	LUFA 5M	LUFA 6S
organic carbon (%)	0.81 ± 0.21	2.16 ± 0.40	0.98 ± 0.05	1.29 ± 0.20	1.75 ± 0.11
particles < 0.02 mm (%)	8.2 ± 0.9	13.9 ± 1.1	22.7 ± 1.1	25.3 ± 1.8	65.1 ± 2.7
pH (0.01M CaCl <sub>2</sub> )	5.1 ± 0.4	5.4 ± 0.1	6.4 ± 0.6	7.2 ± 0.1	7.2 ± 0.1
cation exchange capacity (meq/100g)	4 ± 1	10 ± 1	8 ± 2	15 ± 3	22 ± 6
water holding capacity (g/100g)	33.2 ± 1	48.2 ± 5	34.4 ± 2	42.1 ± 4	40.7 ± 5
weight per volume (g/1000ml)	1404 ± 46	1197 ± 60	1291 ± 30	1212 ± 56	1264 ± 90
<b>Particle size (mm) distribution according to German DIN (in %):</b>					
<0.002	3.0 ± 0.9	6.4 ± 0.9	9.4 ± 0.9	10.8 ± 1.3	42.1 ± 1.8
0.002 - 0.006	2.2 ± 0.7	3.5 ± 0.7	4.2 ± 0.8	5.4 ± 0.3	10.8 ± 0.7
0.006 - 0.02	2.9 ± 0.7	3.8 ± 0.7	9.1 ± 0.5	9.1 ± 0.5	12.1 ± 1.3
0.02 - 0.063	5.3 ± 1.8	5.4 ± 1.2	18.6 ± 2.3	19.5 ± 1.3	14.1 ± 2.5
0.063 - 0.2	27.0 ± 3.1	35.4 ± 2.3	29.3 ± 3.4	38.9 ± 1.0	8.7 ± 0.9
0.2 - 0.63	57.2 ± 4.3	44.8 ± 2.7	26.9 ± 0.7	14.9 ± 1.0	9.0 ± 0.3
0.63 - 2.0	2.4 ± 0.6	0.7 ± 0.1	2.5 ± 0.8	1.4 ± 0.1	3.2 ± 0.7
soil type	sand (S)	loamy sand (LS)	loamy sand (LS)	silty sand (uS)	clayey loam (tL)
<b>Particle size (mm) distribution according to USDA (in %)</b>					
<0.002	3.0 ± 0.9	6.4 ± 0.9	9.4 ± 0.9	10.8 ± 1.3	42.1 ± 1.8
0.002 - 0.05	8.8 ± 1.8	12.2 ± 0.6	29.8 ± 3.0	27.5 ± 2.2	36.0 ± 2.3
0.05 - 2.0	88.2 ± 1.2	81.4 ± 1.2	60.8 ± 2.6	61.7 ± 3.2	21.9 ± 1.6
soil type	sand	loamy sand	sandy loam	sandy loam	clay



# Earthworm bioassays



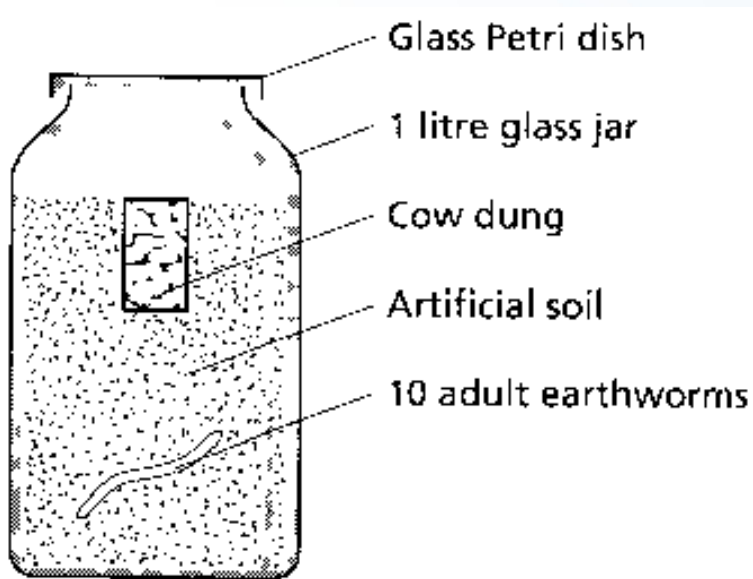
# Earthworm acute toxicity test

- 500 g soil + 10 adult *Eisenia fetida*
- 14 days
- mortality and weight



# Earthworm reproduction test ISO 11268-1

- 56 days
- 500 g soil + 10 adult *Eisenia fetida*
- horse manure as food
- juveniles extracted using water bath

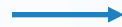




# *Eisenia fetida* reproduction test ISO 11268-2



Soil preparation



WHC measurement



Water added  
Soil weighted to jars



10 adults to 1 jar



Weighting worms



10 adults from culture  
Washed

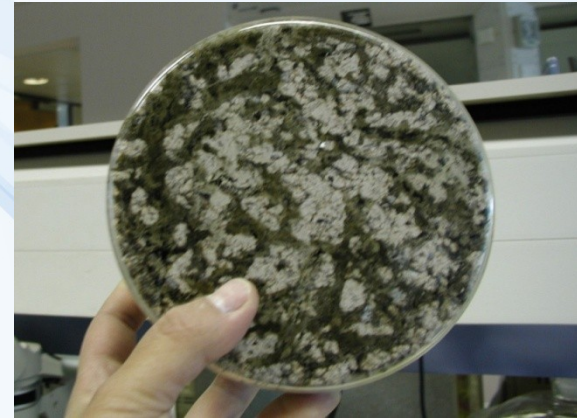
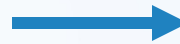


# *E. fetida* test – after 28 days

ISO 11268-2



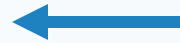
Temperated room



Control of the jars, activity markers



Weighting the worms



Mortality assessment

# *E. fetida* – 8 weeks

ISO 11268-2



After 20 min juveniles appear

Water bath, increasing temperature 40°C - 60°C



Collecting and counting juveniles



Sieving the soil



Hand sorting of cocoons



Counting



# Avoidance test

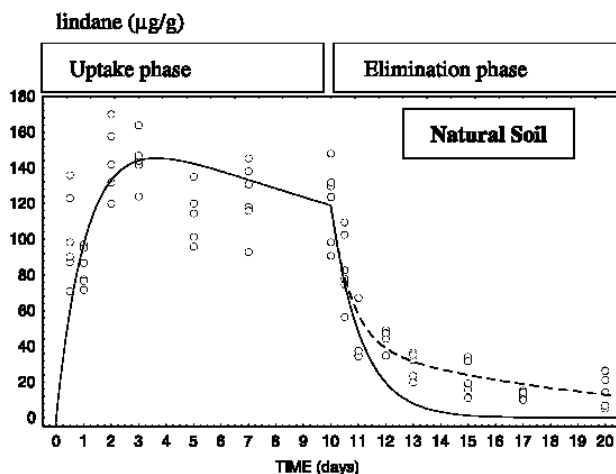
ISO 17512-1

<b>Guideline:</b>	ISO/DIS 17512 (draft)
<b>Species:</b>	<i>E. andrei</i>
<b>Substrate:</b>	LUFA St. 2.2 standard soil
<b>Duration:</b>	1 - 2 days
<b>Parameter:</b>	Behaviour of the worms
<b>Test vessels:</b>	Dual chamber



# Bioaccumulation test

Test organism	<i>Eisenia fetida/andrei</i> , or <i>Enchytraeus albidus</i> , adult worms of similar size
Test substrate	spiked artificial soil based on OECD guideline No. 207 (OECD 1984)
Control substrate	uncontaminated artificial soil based on OECD guideline No. 207 (OECD 1984)
Biological parameters	concentration of test item in worms during uptake and elimination period
Endpoints	bioaccumulation factor, uptake rate coefficient, elimination rate constant
Test duration	uptake period: until steady state or 28 d; plus 10 day elimination period
Temperature	20 ± 2°C
Light regime & light intensity	constant light; 400 to 800 lx
Test chambers	e.g. 250 mL/50 mL glass tubes; additional chambers of appropriate size for chemical analyses
Feeding during exposure	food added to soil directly after spiking; additional feeding once per week during exposure periodic addition of deionised water
Water	4 days; spiked soil under test conditions <sup>14</sup> C-labelled/metal
Equilibration	if possible, test item dissolved in water mixed with dry soil; optional: coating of sand in worms and soil
Test item	1 plus control(s)
Spiking of soil	to be fixed (expressed in Bq or mg kg <sup>-1</sup> soil dry weight)
Analysis of test item	at least 3 per sampling date
Number of test concentrations	<i>Eisenia</i> : 1; <i>Enchytraeus</i> : 20
Test concentrations	4 samples after soil preparation
Number of replicates per test concentration/sampling date	4 samples at end of uptake phase*
Number of organisms per test chamber	mortality during test period ≤ 10% (earthworms), ≤ 20% (enchytraeids)
Determination of soil dry weight and organic carbon content in soil	Use of appropriate methods (e.g. nonlinear regression analysis, ANOVA, Dunnett's t-test)
Determination of lipid content in biota	
Validity of test	
Evaluation	





# *Enchytraeidae*



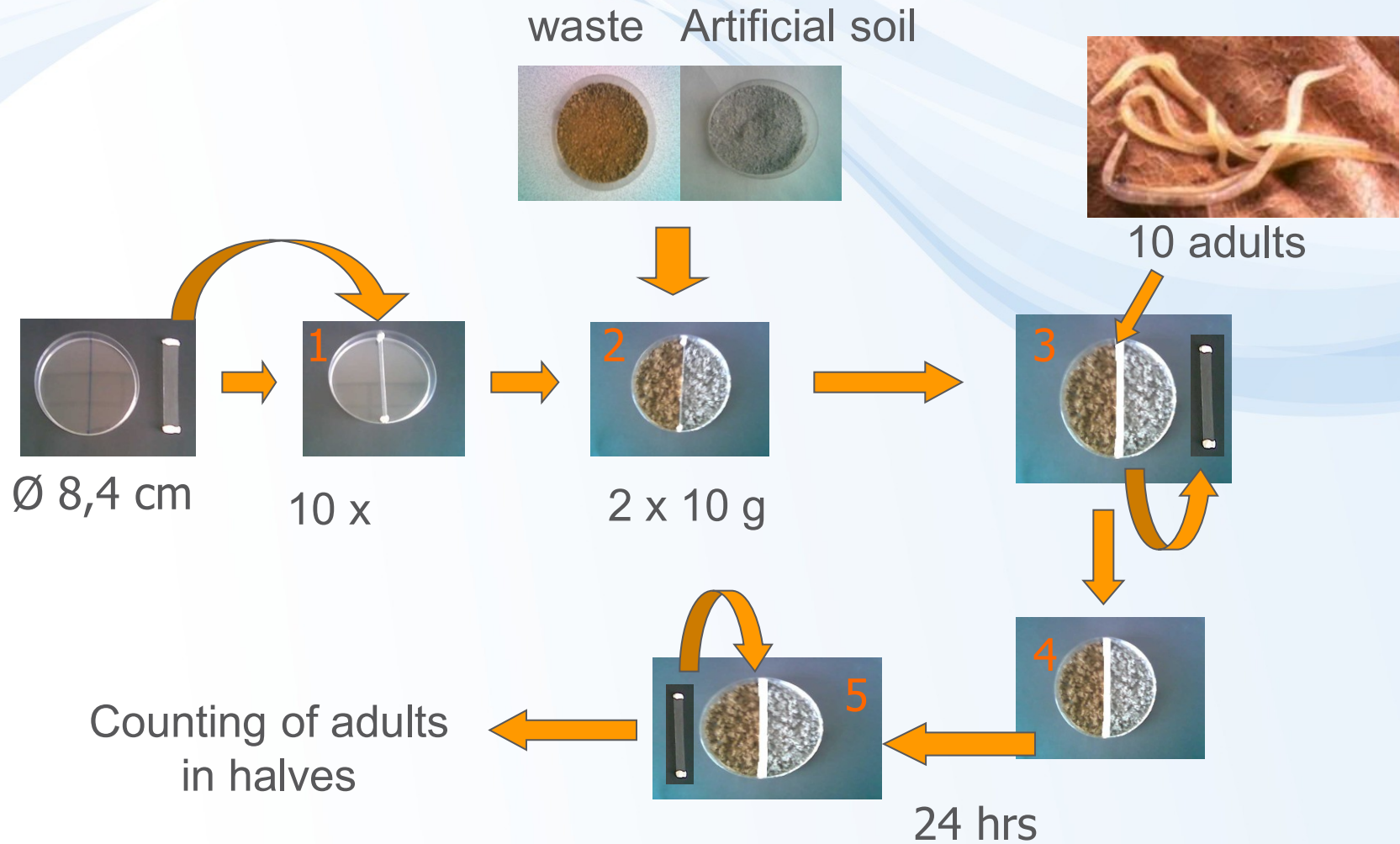


# Enchytraeidae

ISO 16387

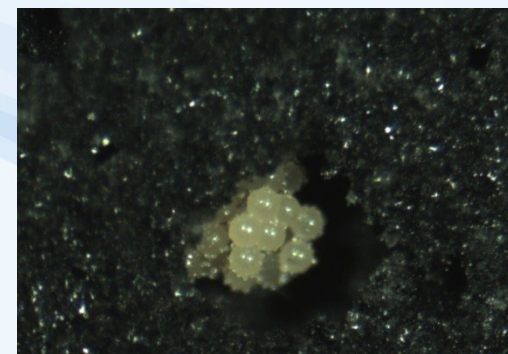


# Avoidance test with *E. albidus*





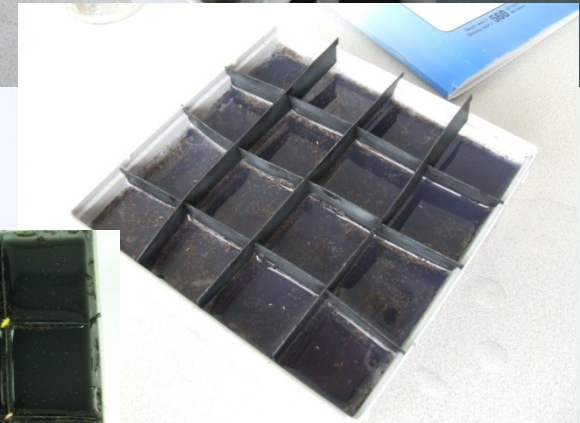
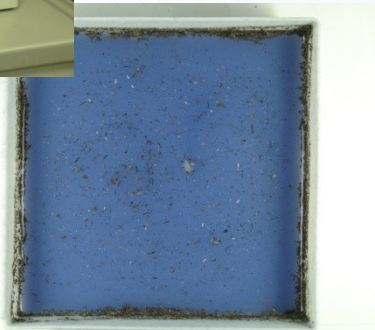
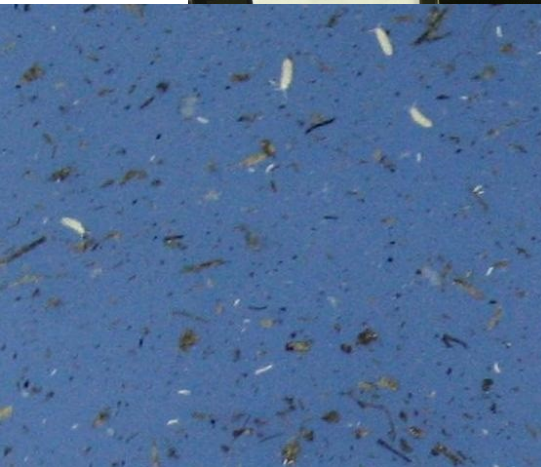
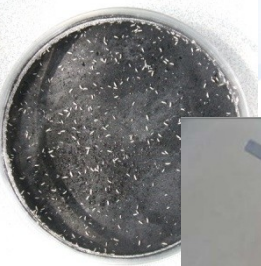
# *Folsomia candida*



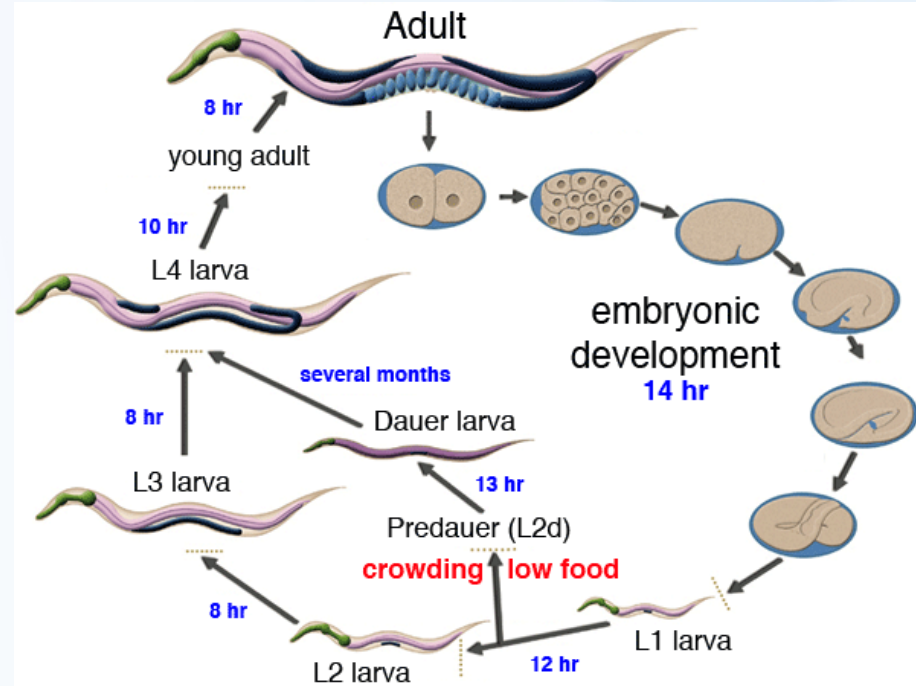
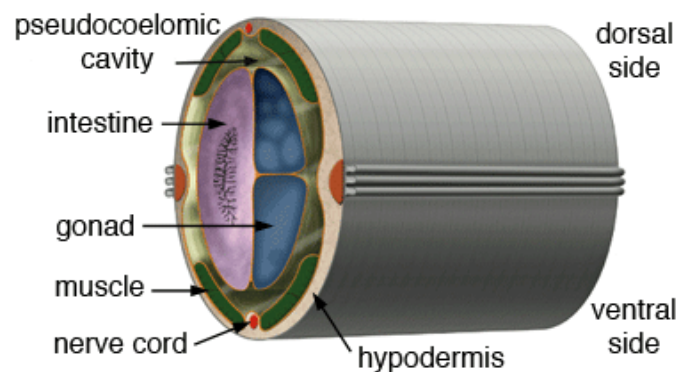
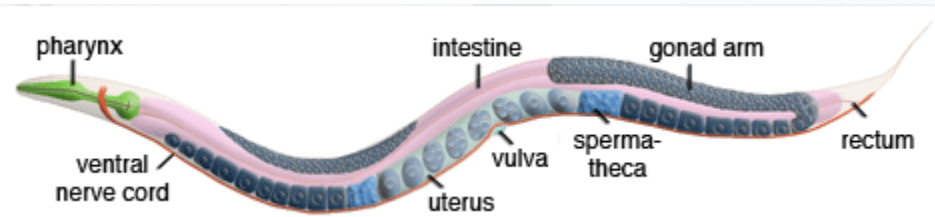


# *Folsomia candida*

ISO 11267



# Caenorhabditis elegans test

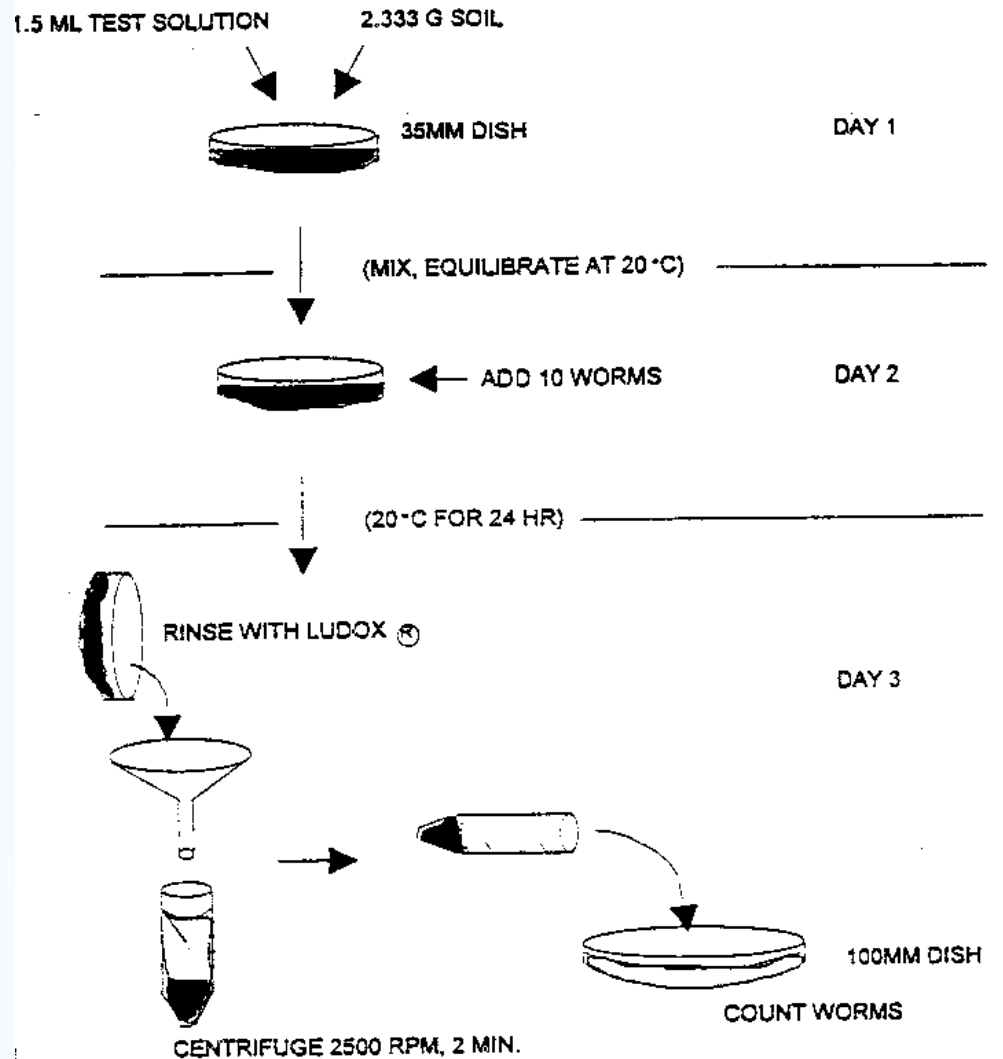




# Caenorhabditis elegans test

ASTM: E2172-01 Standard  
Guide for Conducting  
Laboratory Soil Toxicity Tests  
with the Nematode  
*Caenorhabditis elegans*

ISO 10872



# Mites

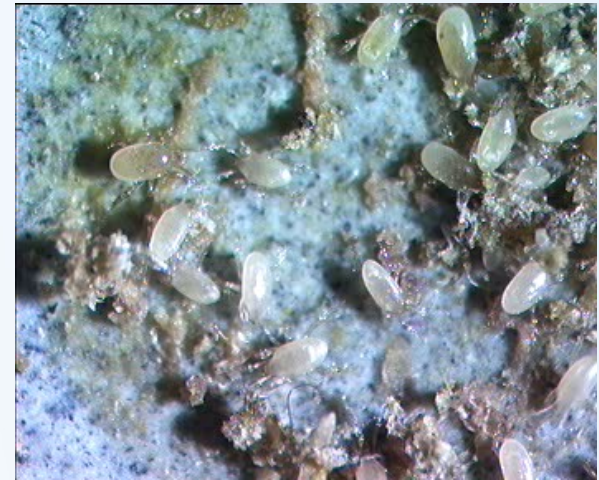
*Hypoaspis aculeifer*



predator

cont. soil

prey





# *Lactuca sativa* root growth

ISO 11269-1

**Germination tests with plants** – testing toxicity in the aquatic media (*Sinapis alba*) or in soil (*Lactuca sativa*)





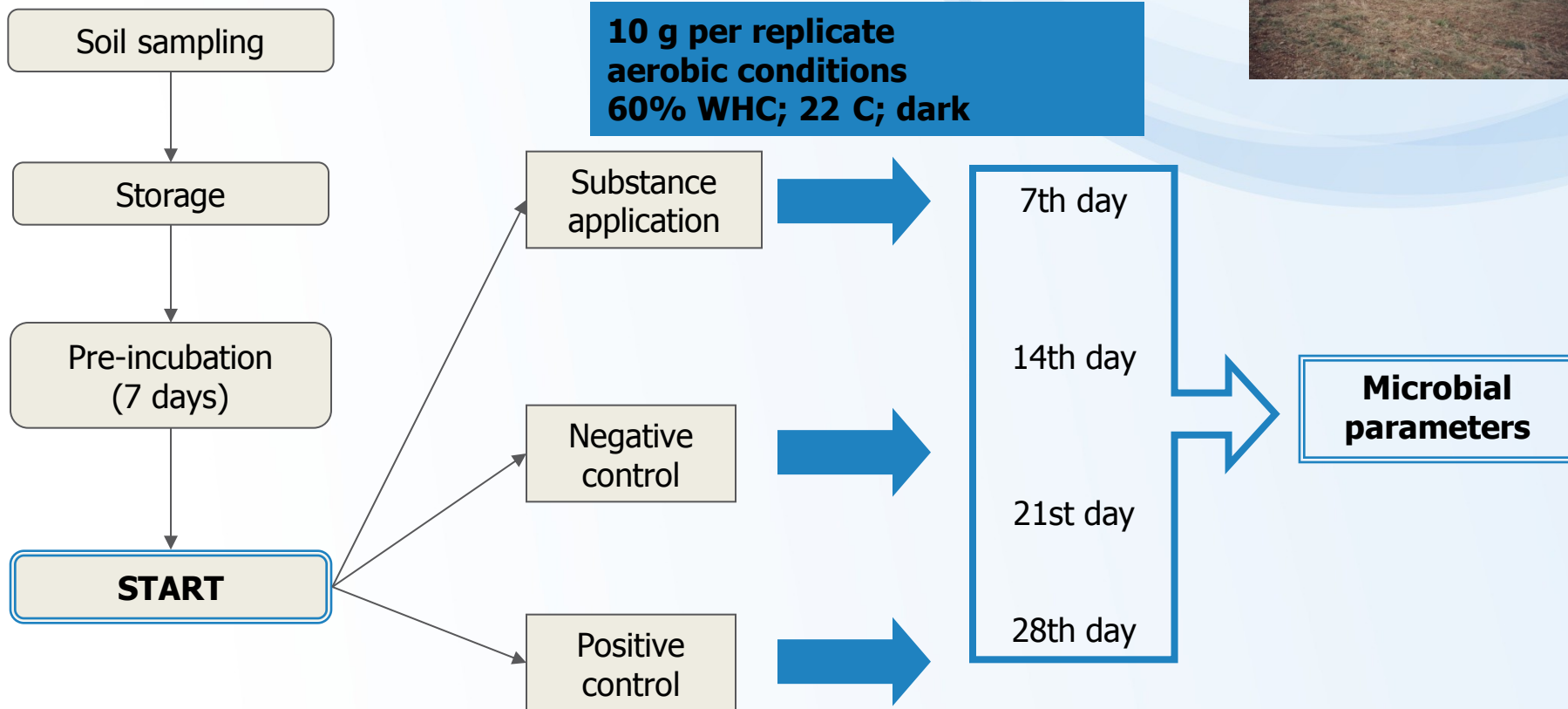
# Higher plants chronic toxicity ISO 22030



# Soil microbial assay according to OECD, ISO

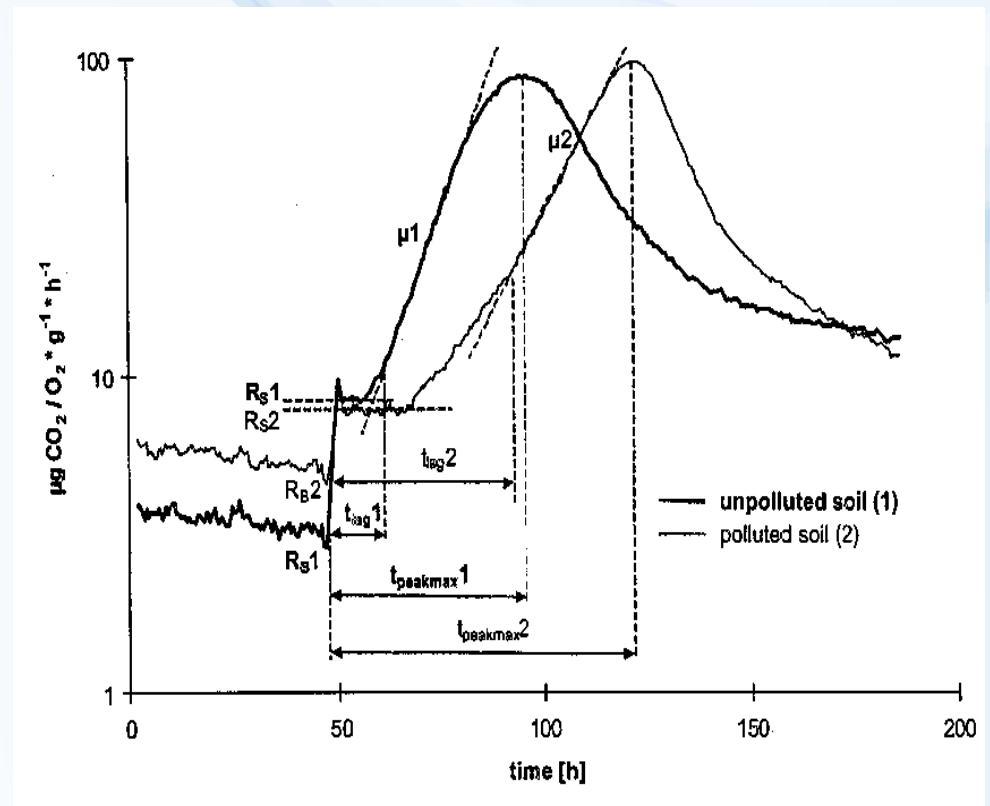
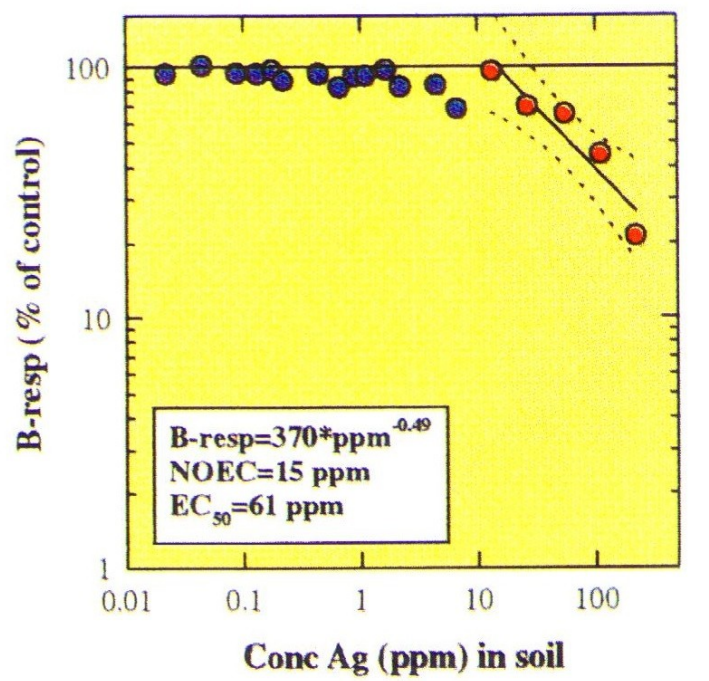
**Real uncontaminated agricultural soil with indigenous microflora:**

$\text{pH}_{\text{KCl}} = 7 - 7.5$     $C_{\text{bio}} = 400 - 700 \mu\text{g}\cdot\text{g}_{\text{d.w.}}^{-1}$   
 $C_{\text{org}} = 1.5\%$     $\text{BR} = 0.5 - 0.7 \mu\text{g CO}_2\text{-C}\cdot\text{h}^{-1}\cdot\text{g}_{\text{d.w.}}^{-1}$   
sand = 70%





# Effects on microbial respiration

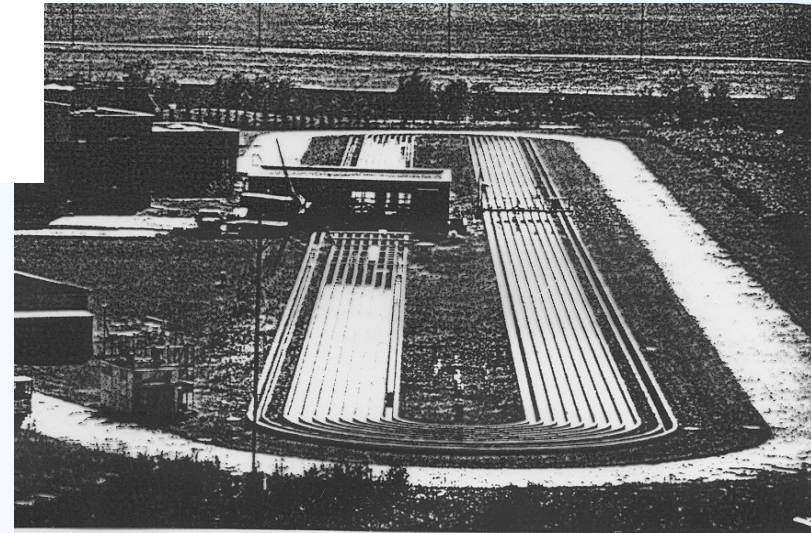
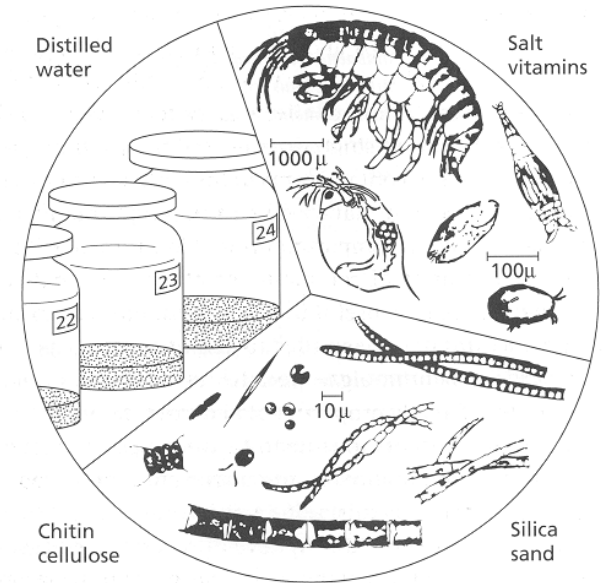
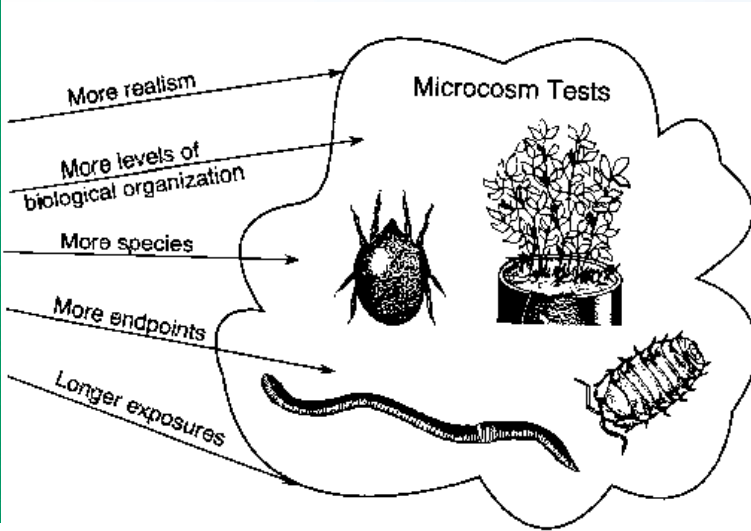


# Micro & Mesocosms

Expensive & time consuming (e.g. *Pesticide testing*)

Variable results (natural variability ...)

Higher ecological relevancy



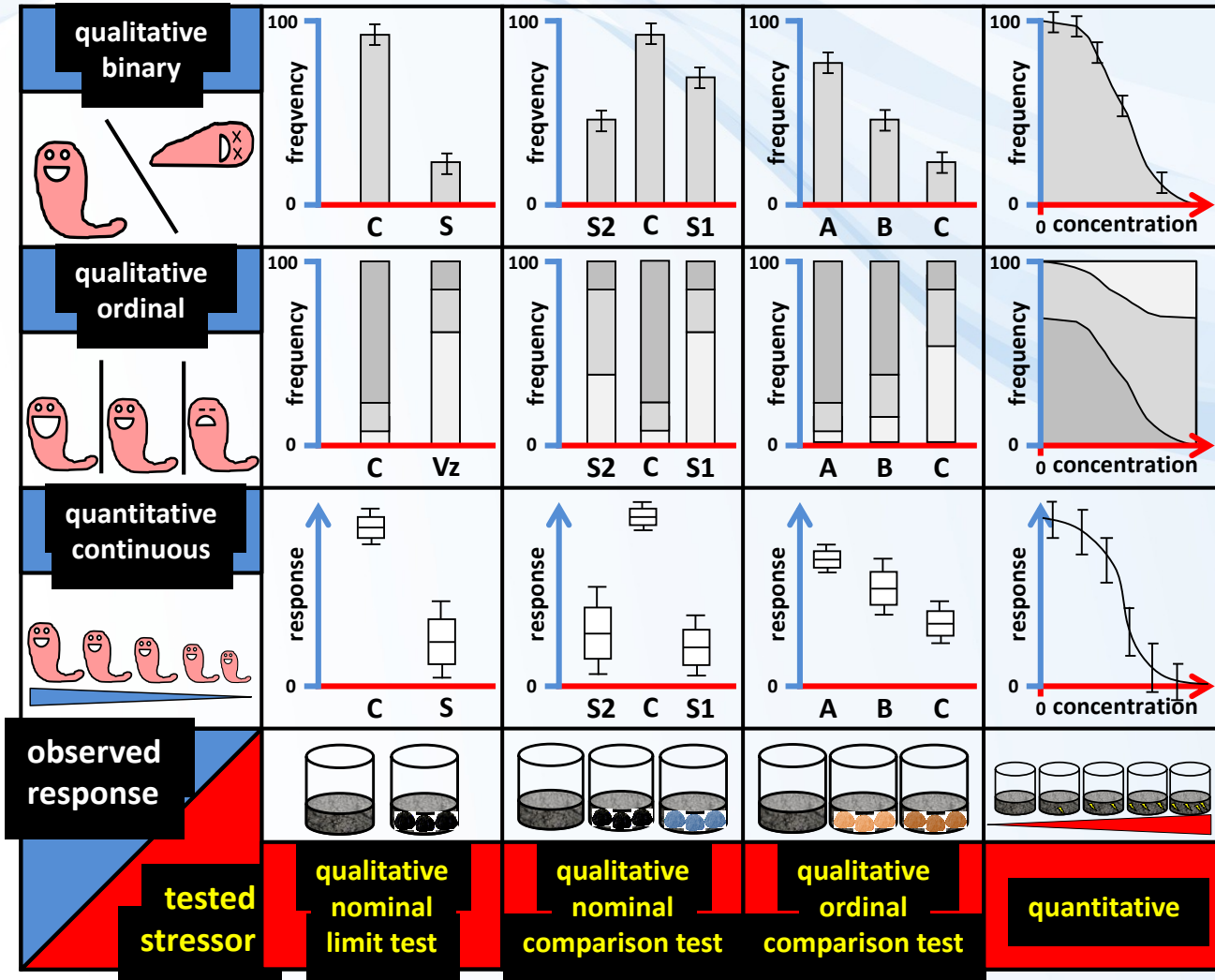


Research centre  
for toxic compounds  
in the environment

# Results of the bioassays and their use

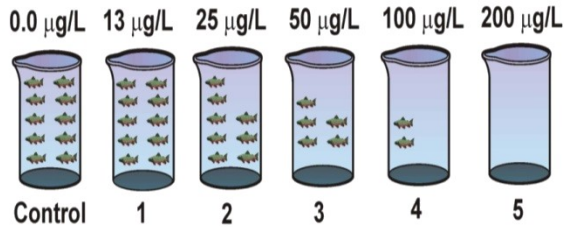


# Data from ecotoxicity tests

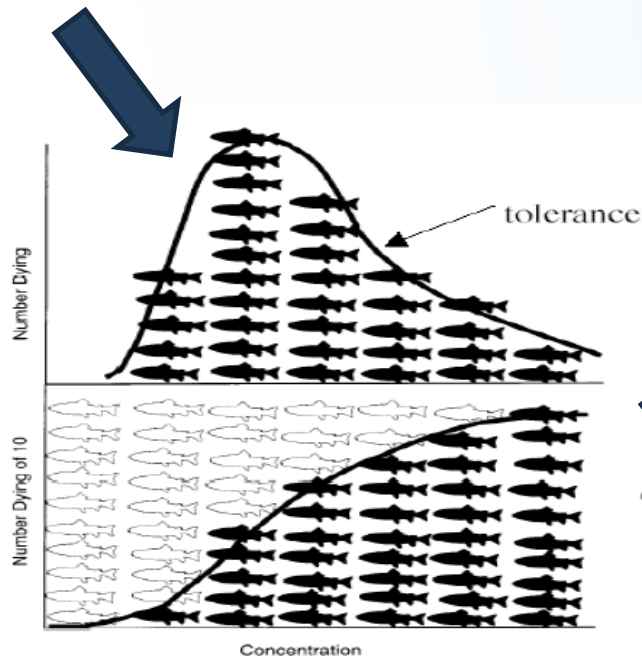


# Dose(concentration) - response relationship

## Concentration:



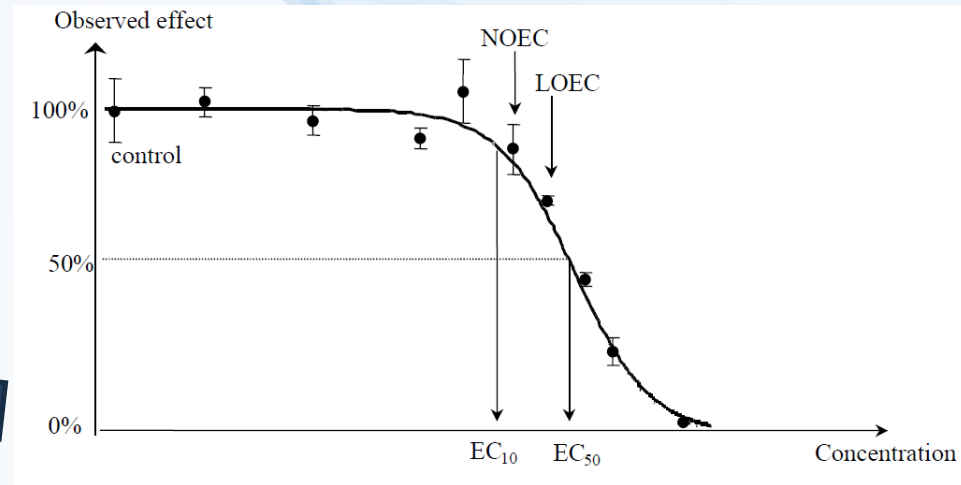
96-hour LC50 = 50 µg/L



## Concentration and Dose

## Note

Concentration and dose both refer to the amount of test material to which the test organism is subjected. Concentrations are used to describe the amount of test material in the testing environment (e.g., mg/L in water, mg/kg in soil or mg/kg in food). Doses are used to describe the amount of test material administered to a subject (e.g., mg/kg-bodyweight in an avian bolus study). Statistical methods for both types of studies are identical; however, interpretations are different. Although "concentration" is used throughout this document, all the statistical methods presented here also apply to studies in which a dose is used.



**No Observed Effect Concentration (NOEC)**  
**Lowest Observed Effect Concentration (LOEC)**  
**EC<sub>x</sub> ( x % effects concentration)**  
**LC<sub>x</sub> ( x % lethal concentration)**

# Bioassay vs real ecosystem

- Bioassay is only simplified ecosystem model
- species differs, matrix differs, single species vs multispecies, individuals vs populations



*Aporrectodea caliginosa*



*Lumbricus terrestris*



VS



*Eisenia fetida* – compost worm !!



# Bioassay vs reality

Objective = to protect real ecosystems, safe concentration

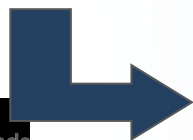
→ need to extrapolate bioassay results to be valid for ecosystems

- how much information we have?
- uncertainty factors, 1, 10, 100, 1000



Extrapolate

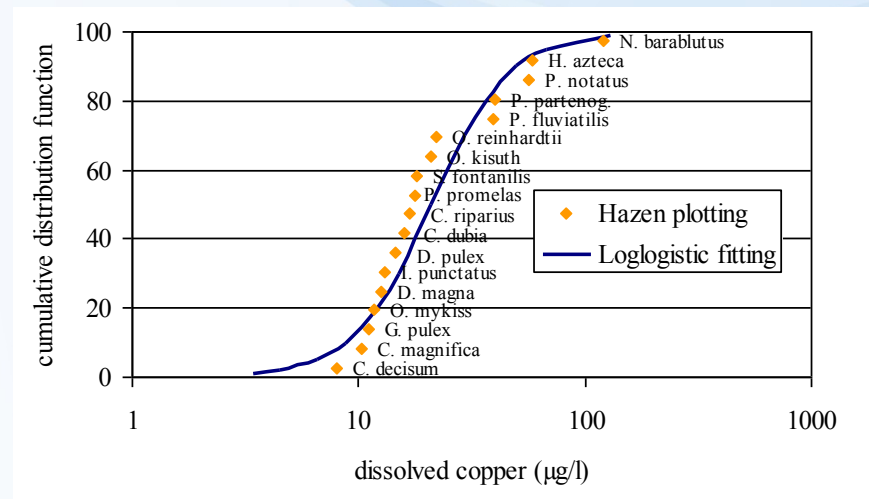
Data	Assessment factor
L(E)C50 short-term toxicity tests	1000
NOEC for 1 long-term toxicity test	100
NOEC for additional long-term toxicity tests of 2 trophic levels	50
NOEC for additional long-term toxicity tests of 3 species of 3 trophic levels	10



PNEC (limits, EQS)



Species sensitivity distribution (SSD)

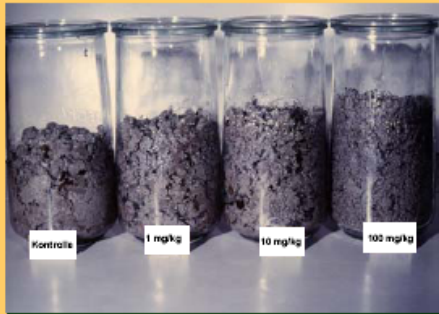


HC5 = 95% protection level

# Risk assessment with earthworms



## Prüfung der Auswirkungen auf Regenwürmer



Labortest mit Kompostwurm



Kokons des Kompostwurms



einheimische Regenwurmart

### 1. Akute Toxizität (2 Wochen)

Bewertung: Mortalität, Körpergewicht  
 $TER = \frac{LC50}{PEC} < 10$

### 2. Einfluss auf die Fortpflanzung (8 Wochen)

Bewertung: Anzahl der Jungtiere, Körpergewicht  
 $TER = \frac{NOEC}{PEC} < 5$

### 3. Auswirkungen im Freiland (1 Jahr)

Bewertung: Individuenzahlen, Risiken für Populationen und Lebensgemeinschaften

# Summary - Take home message

- **Bioassays are necessary addition to chemical analyses**
- **Lot of standardized/experimental bioassays to choose from**
- **Necessary know-how (lab tricks, weakpoints, when to use, interpretation, data evaluation ...)**
- **No single test gives all information - battery of bioassays**



# Thanks for your attention!!!!



**Jakub Hofman**

hofman@recetox.muni.cz

<http://www.recetox.cz>