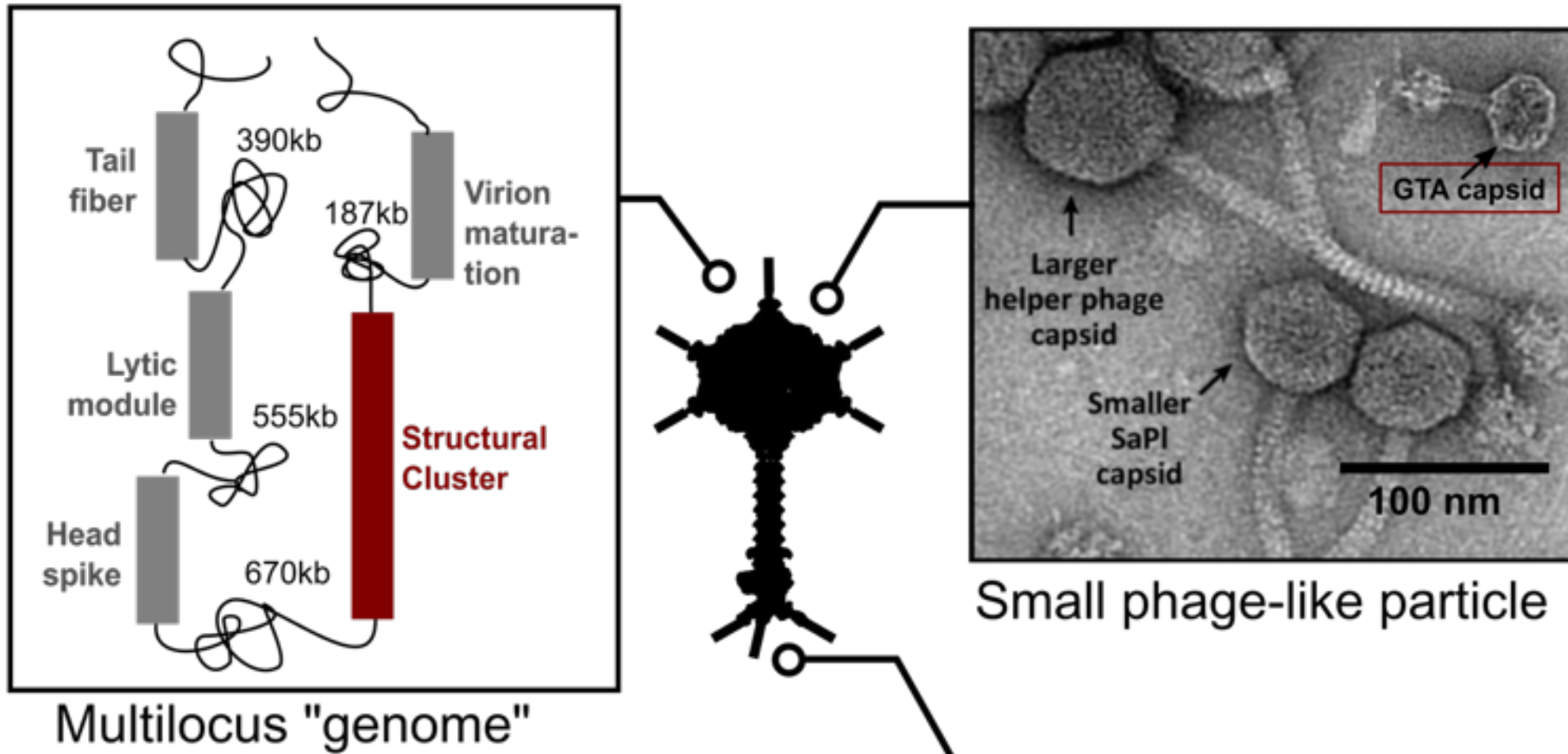


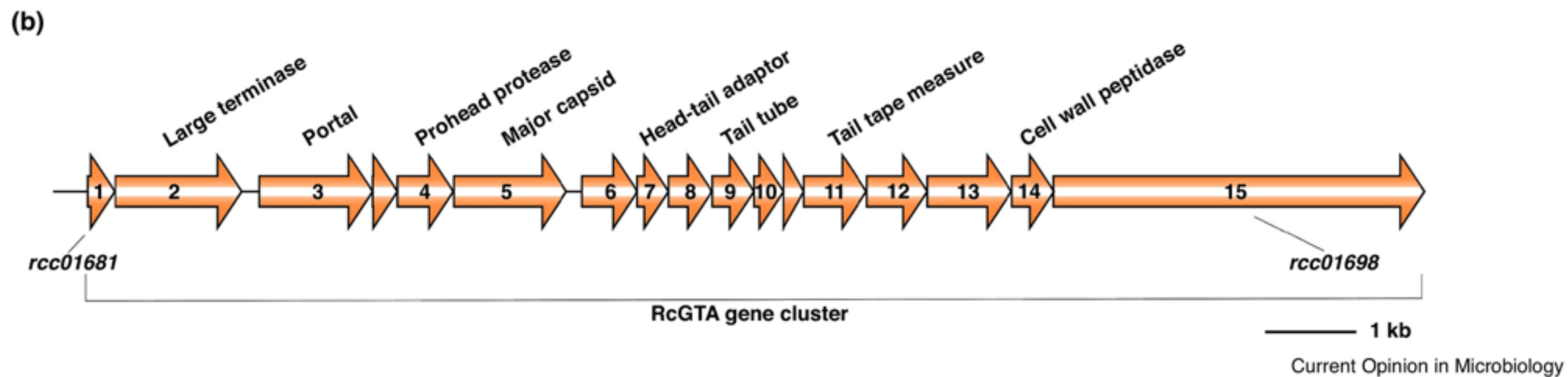
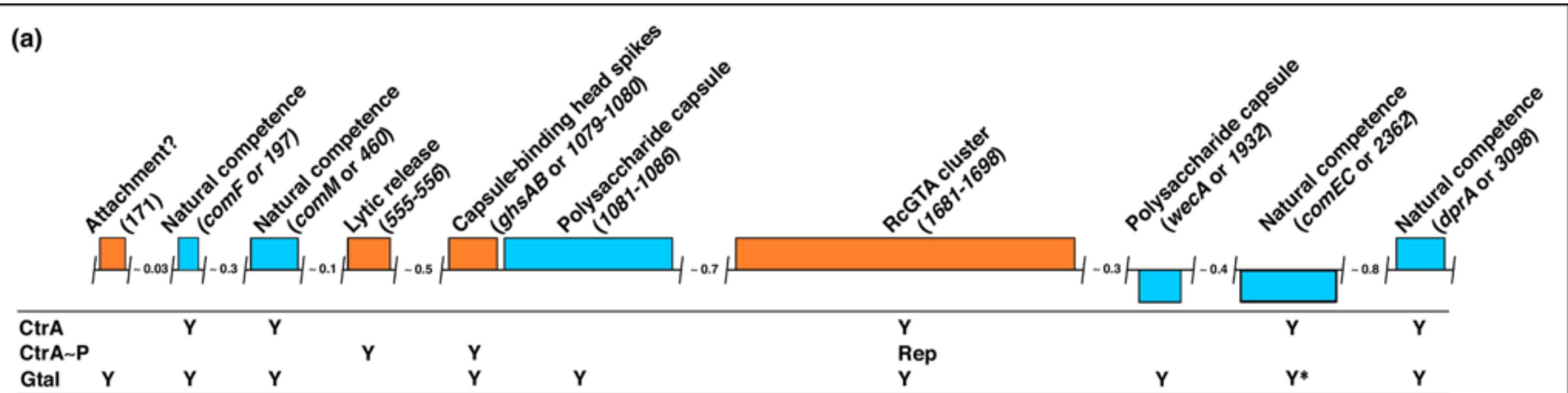
# **Horizontálny prenos génov pomocou Gene transfer agents**

Bi7311, 27. 9. 2018

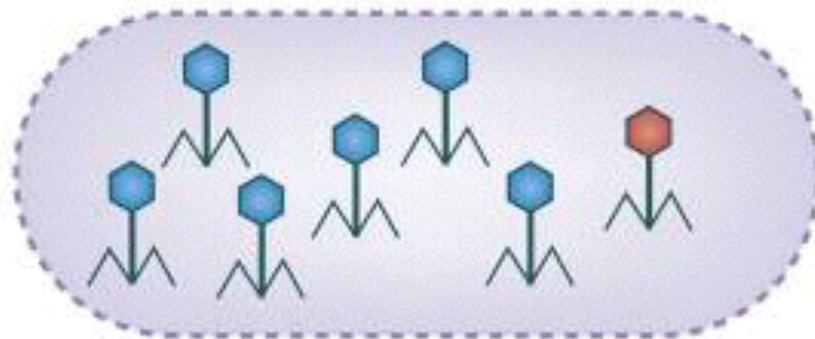
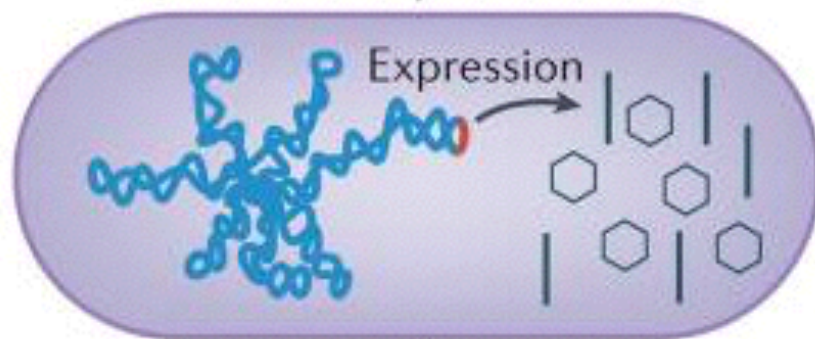
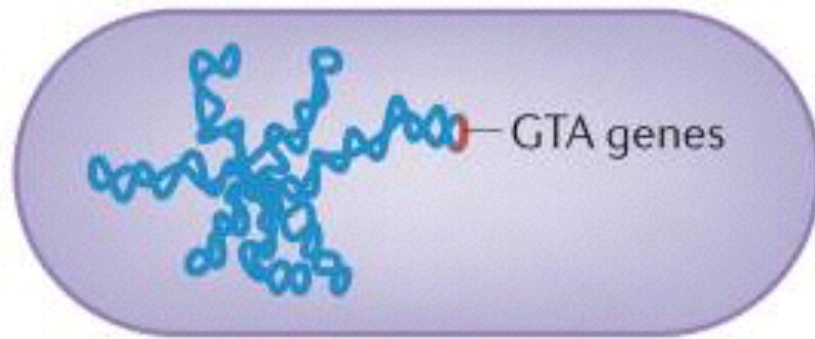
# What is GTA



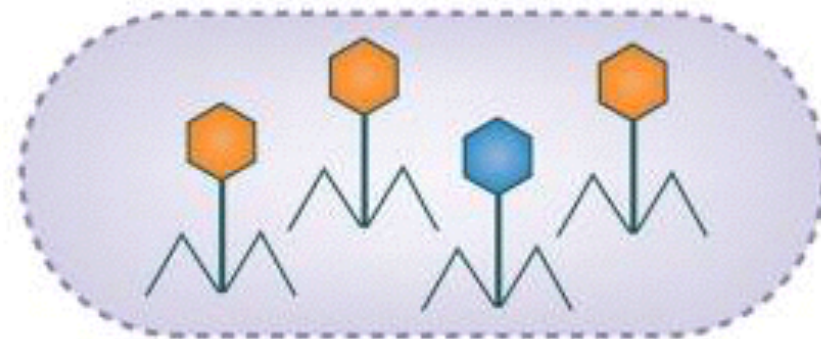
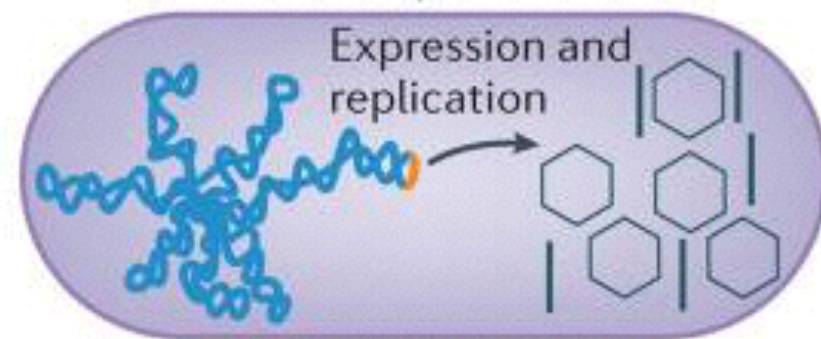
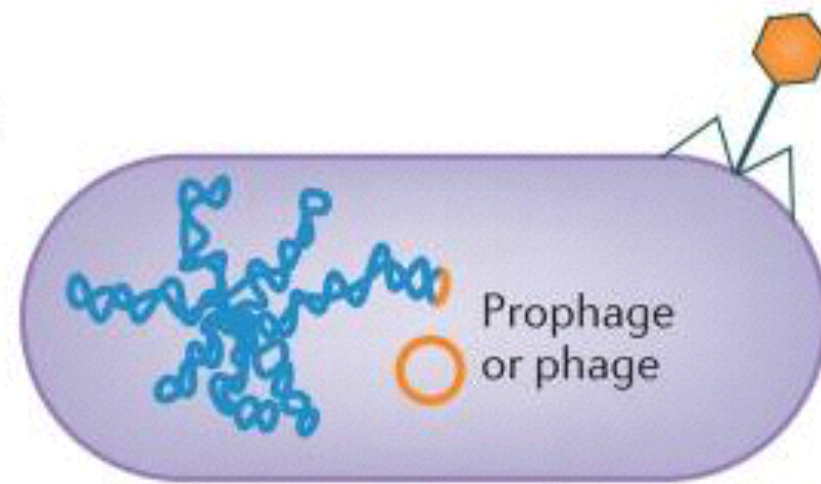
<b>GTA</b>	$2,5 \cdot 10^{-2}$	Efficient gene exchange system
<b>No GTA</b>	$4,6 \cdot 10^{-4}$	
← Frequency of KanR transfer		



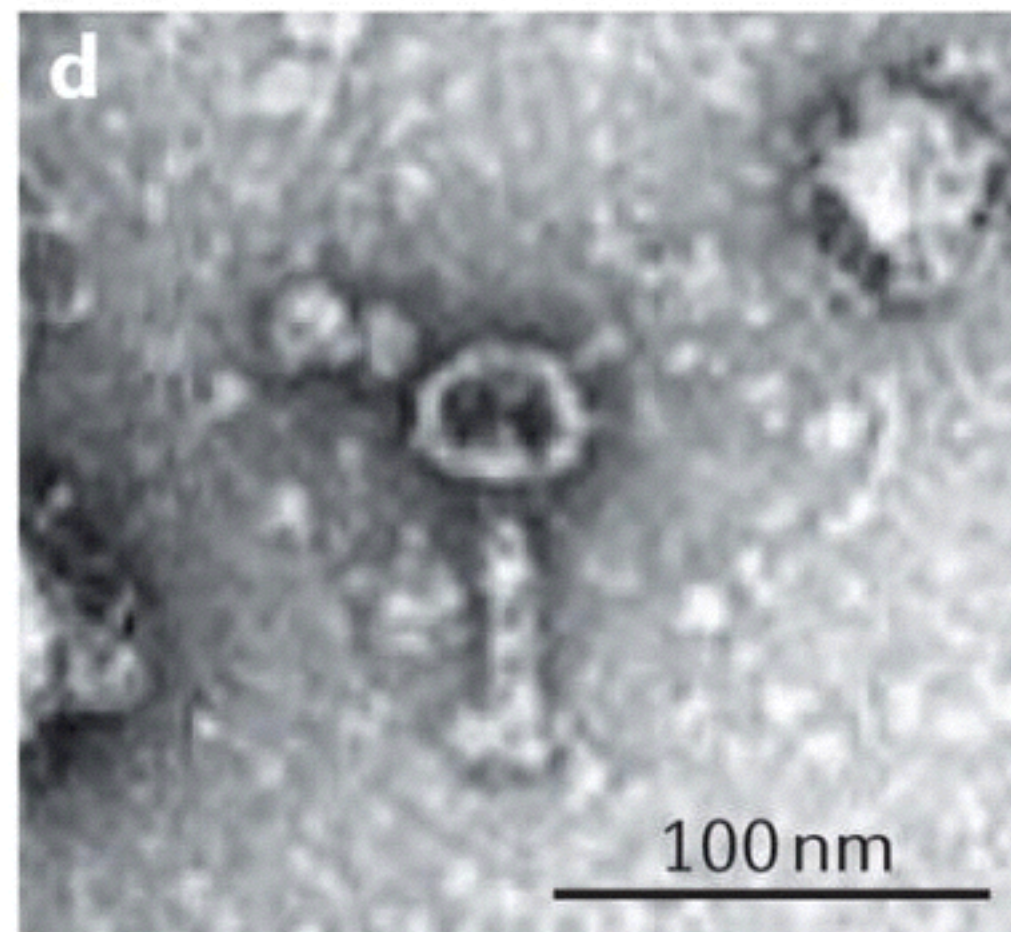
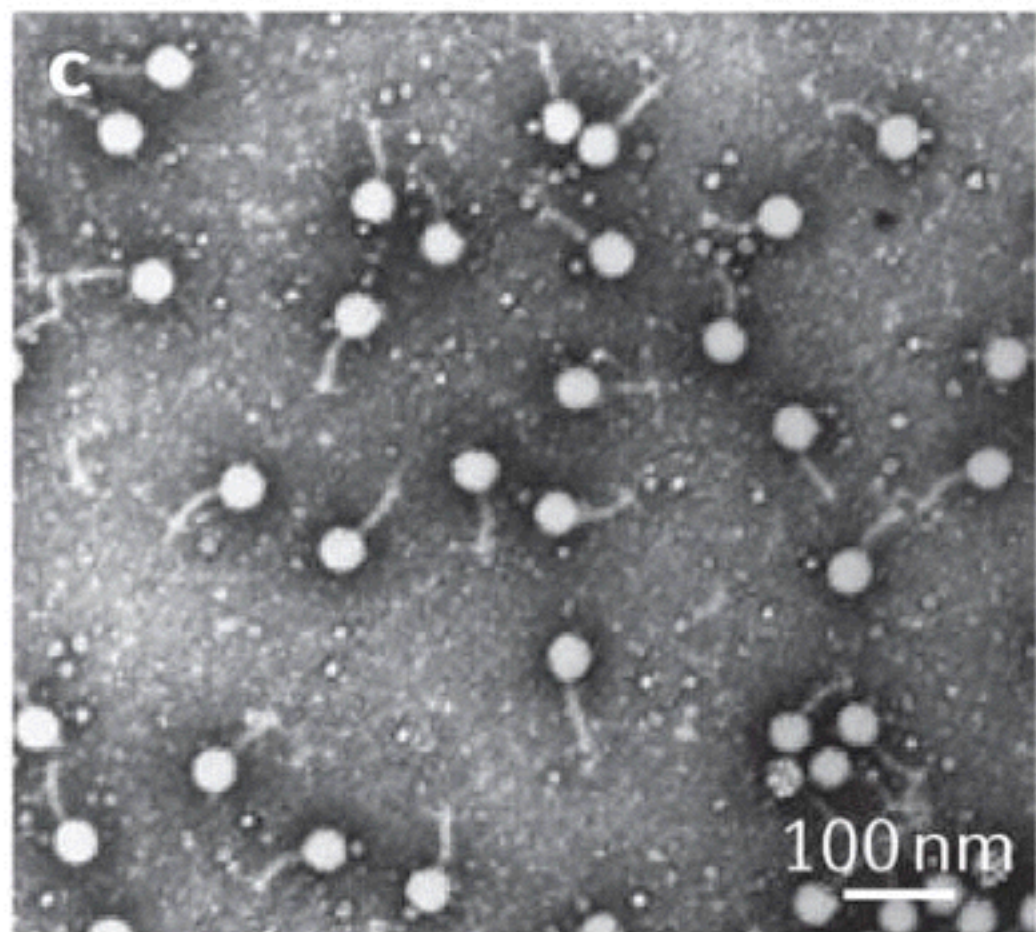
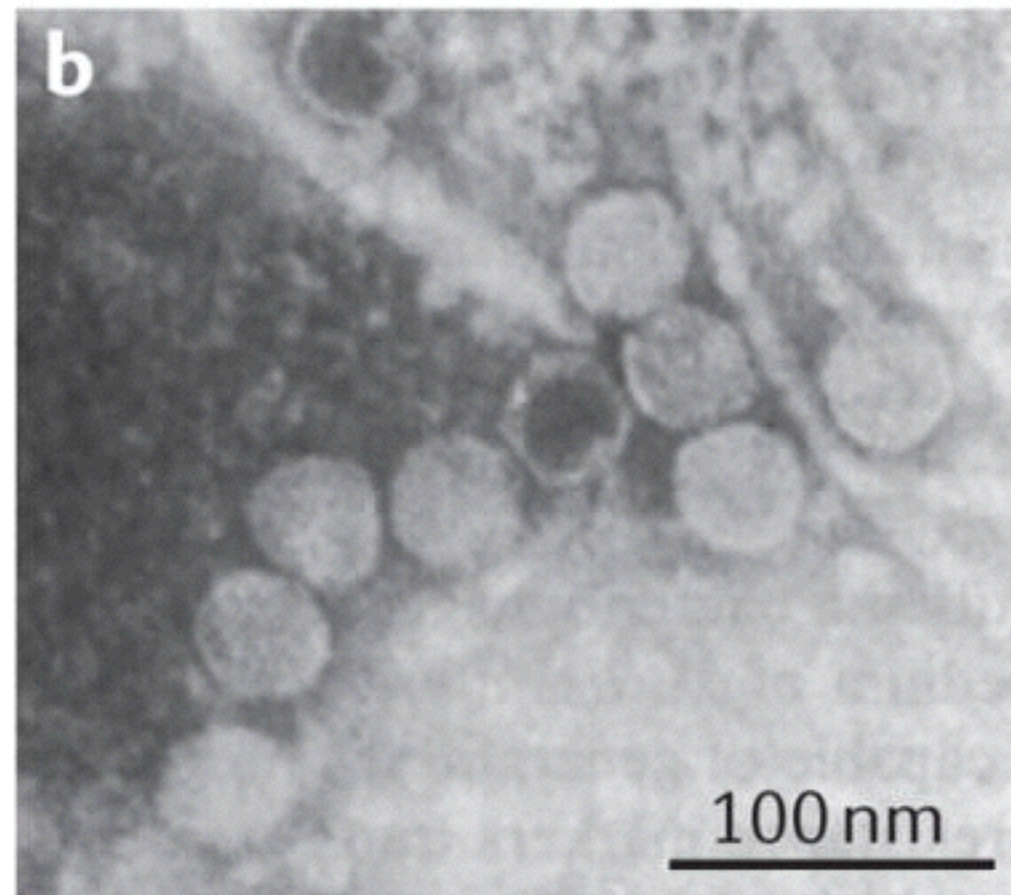
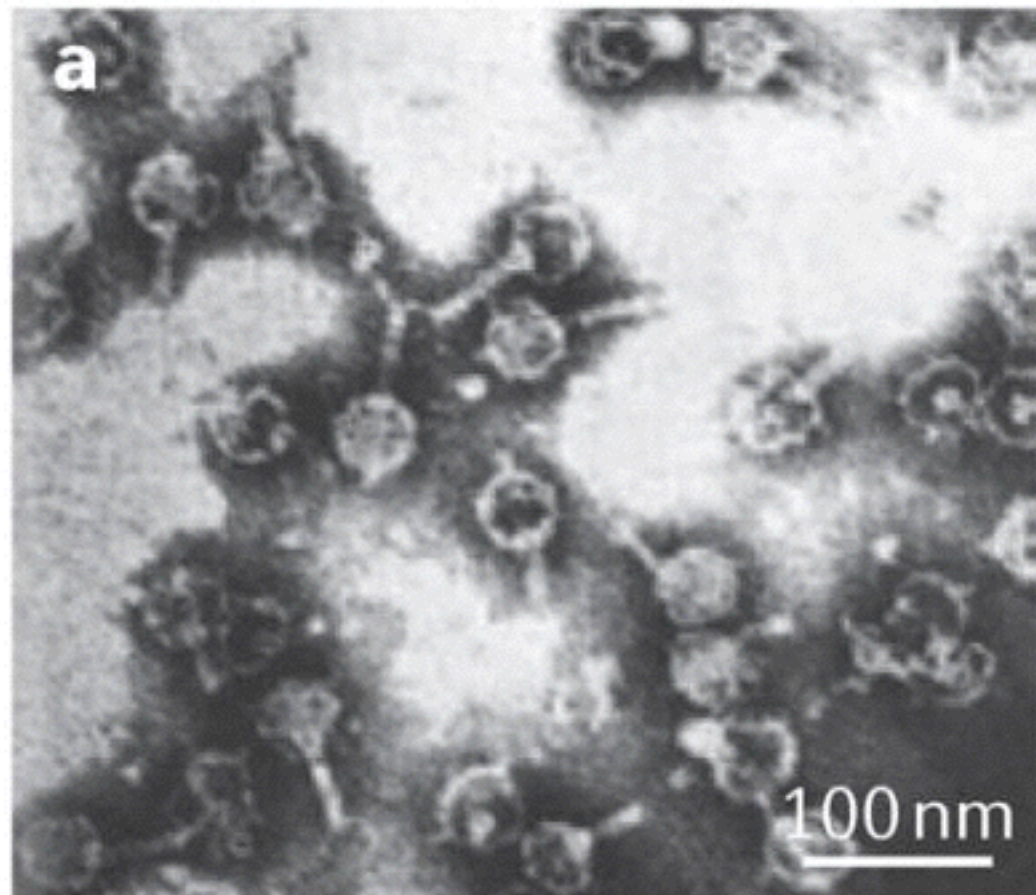
**a**



**b**

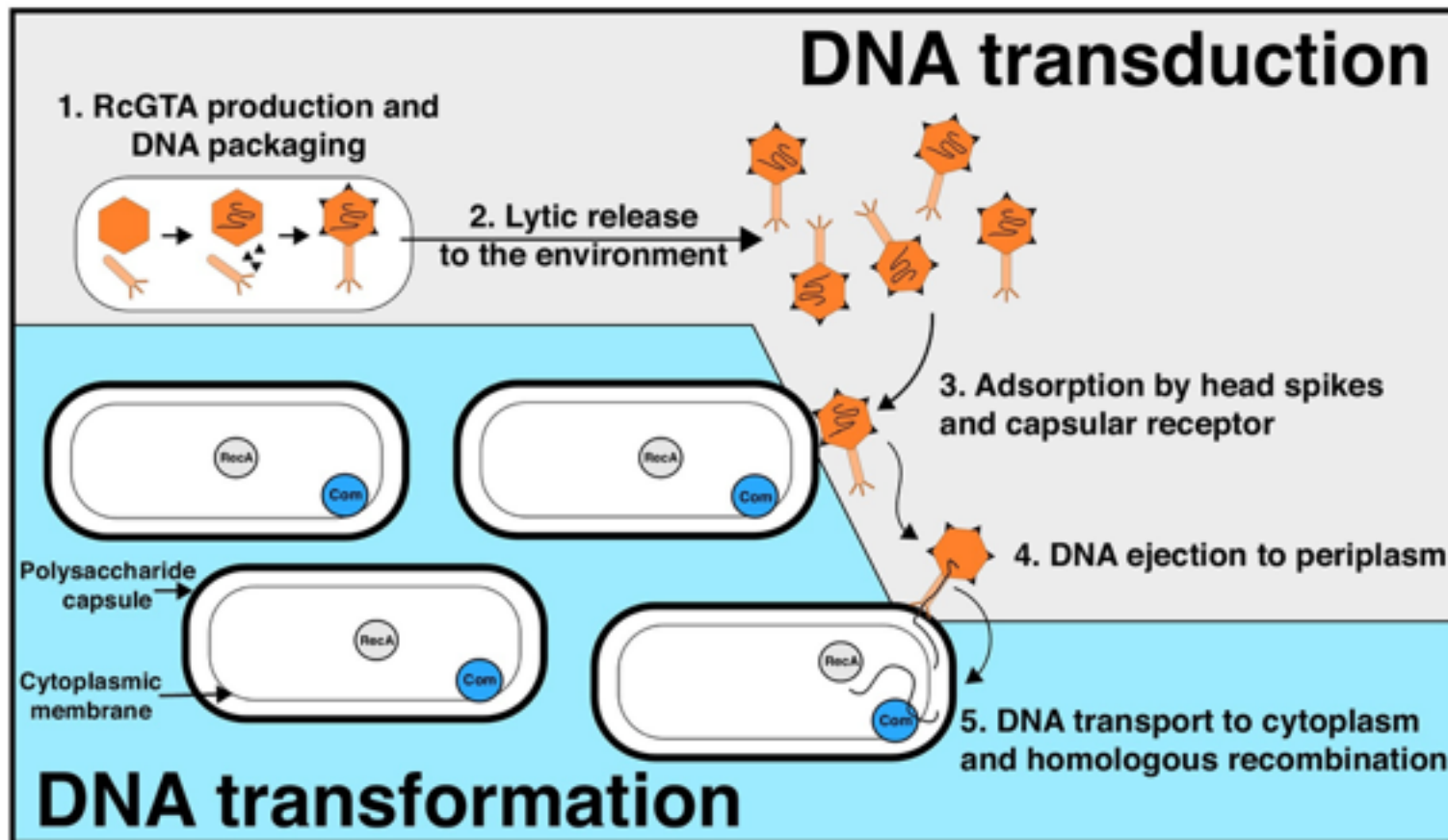




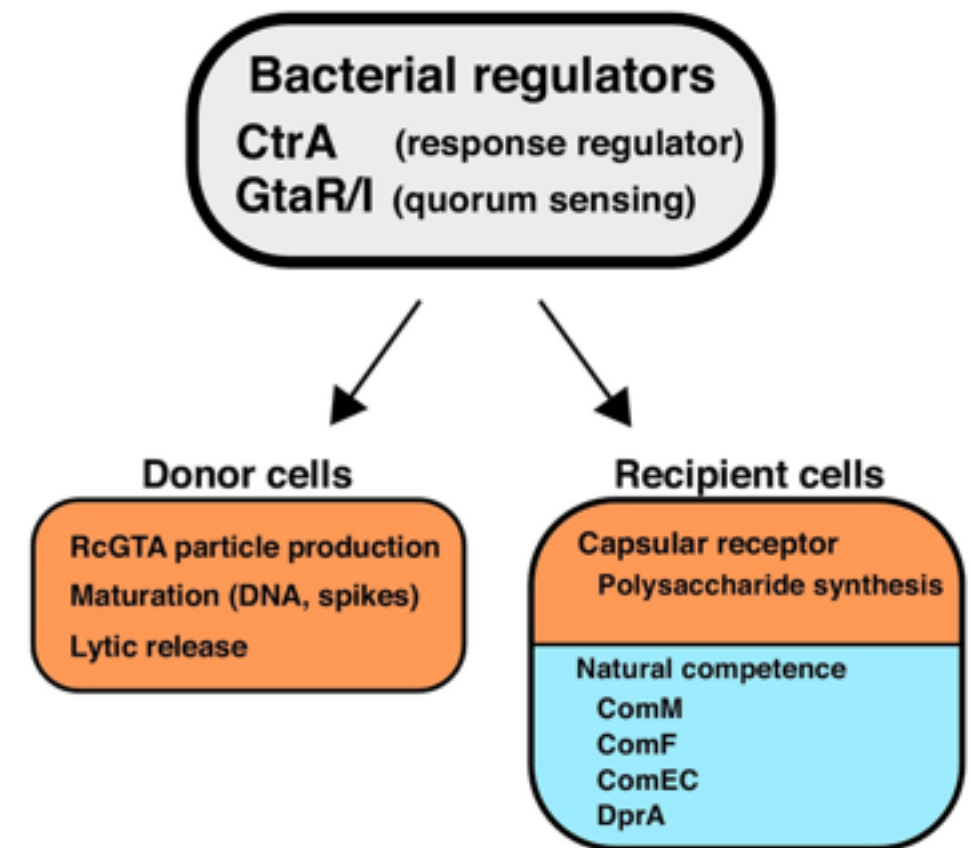




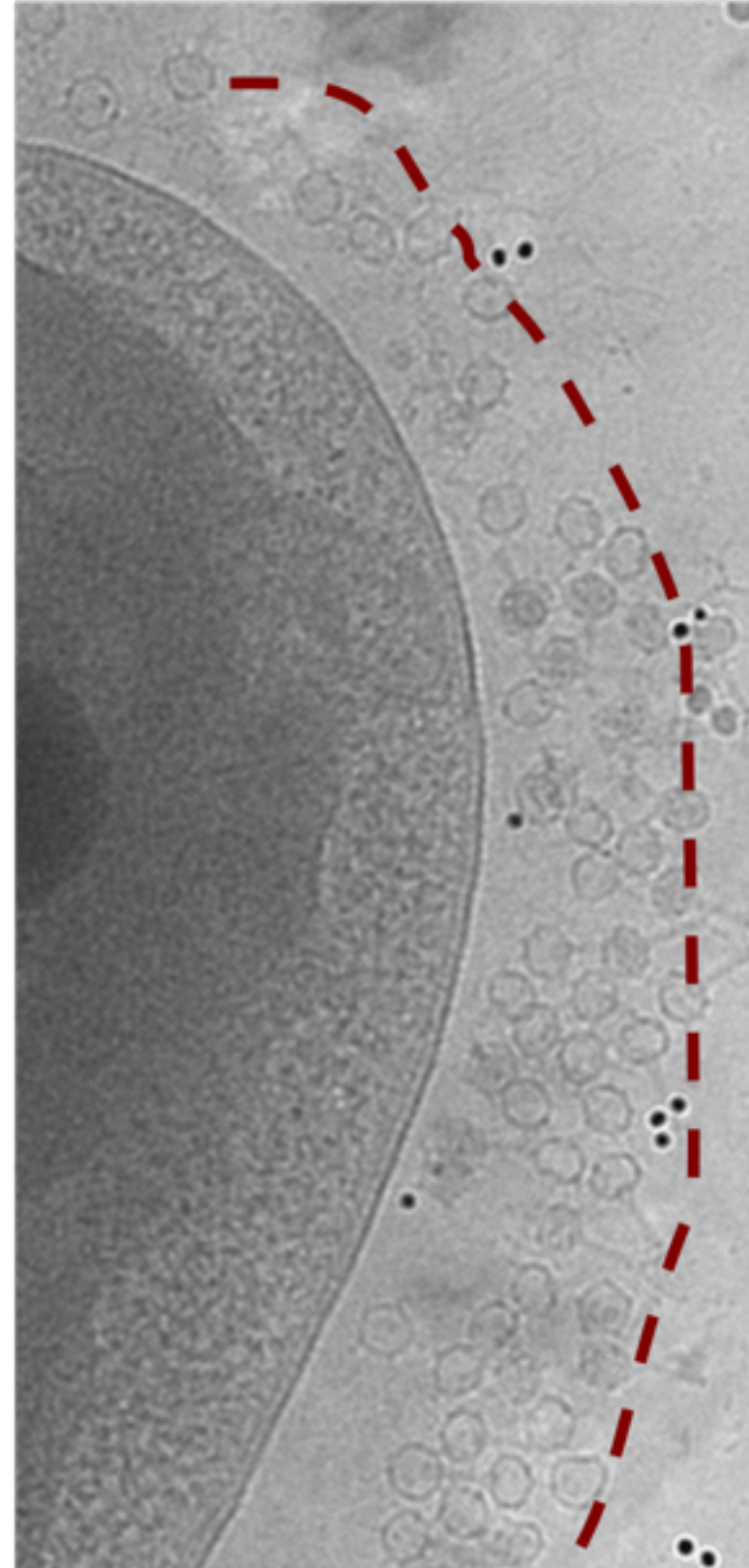
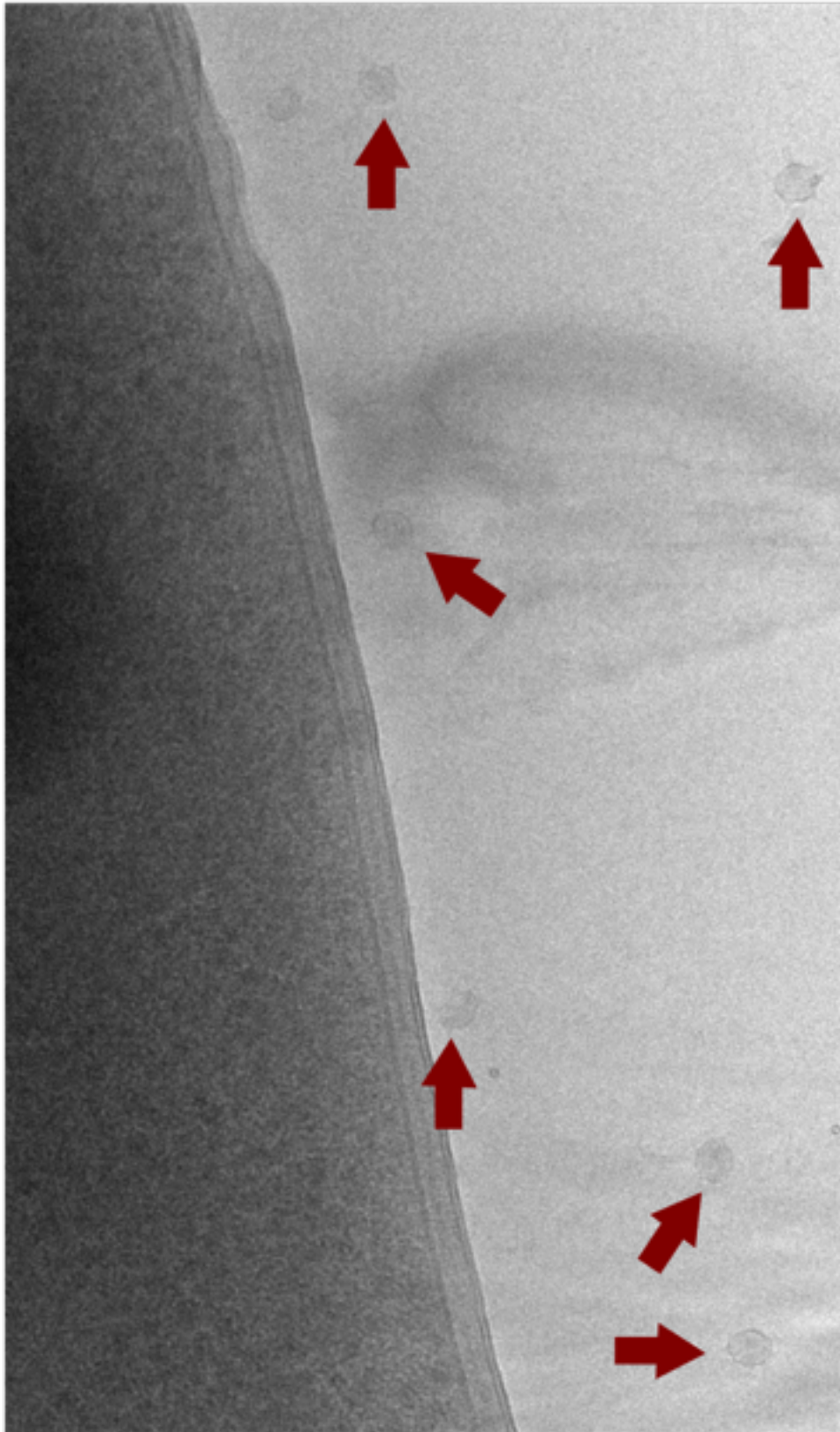
(a)



(b)



# Attachment of the GTA



1

3

# Why to study GTA

