



Environmental Sustainability and Security in the Intersection of the Czech/Polish/German Sudetes

Alois Hynek, Technical University
Liberec

Nikola Hynek, University of Plymouth



microregion Frydlant (FRY)

a part of the Liberec Region

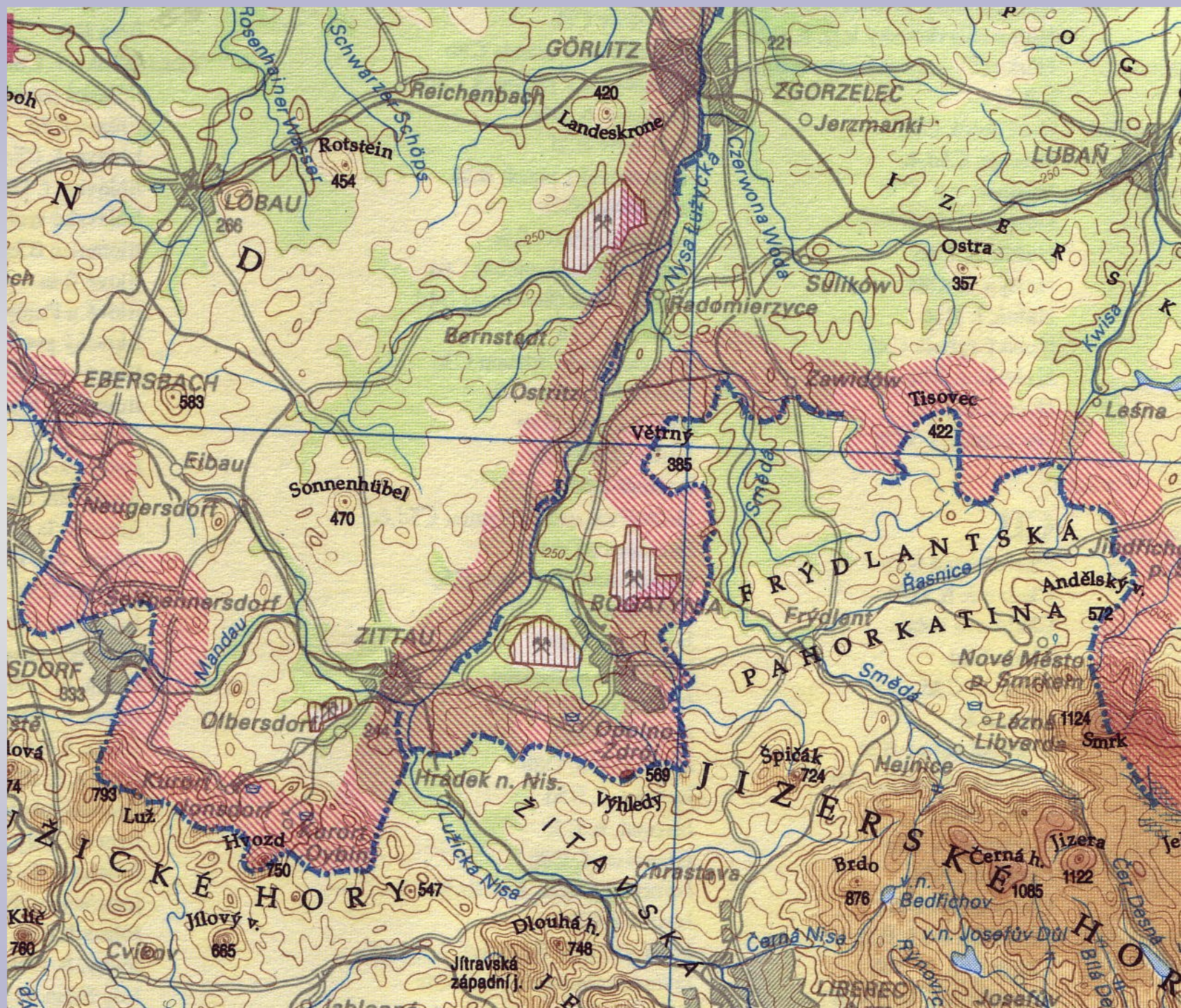
Powiat Zgorzelec (POZ)

a part of the Wojewodztwo

Dolnoslaskie (Poland)

Landkreis Löbau-Zittau (LLZ)

a part the Oberlausitz/Niederschlesien
(Germany).





new human geographies providing deeper understanding of problems

- ④ sustainability and security
- ④ marginality, periphery/semiperiphery
- ④ communities' agency
- ④ entrepreneurship
- ④ life/environment quality
- ④ spatiality and governmentality
- ④ contingencies of human-nature interactions after Millennium Ecosystem Assessment.







ZITTAU

HRÁDEK nad NISOU

Hainewalde

Mittelherwigsdorf

Pethau

Hörmitz

Lehndorfel

Bertsdorf

Olbersdorf

Kokolejná železnice

Kohle-
viehbig

Gust

Porajów

Kopaczów

Alt Hartau

Hrádek nad Nisou-
Porajów

Opalno-Zdrój

Białopole

Jasna Góra

Tanfler
580,0

Luftkurort
Lückendorf

Wozd
749

ONKO
ZITTAU

E442

11

35

270

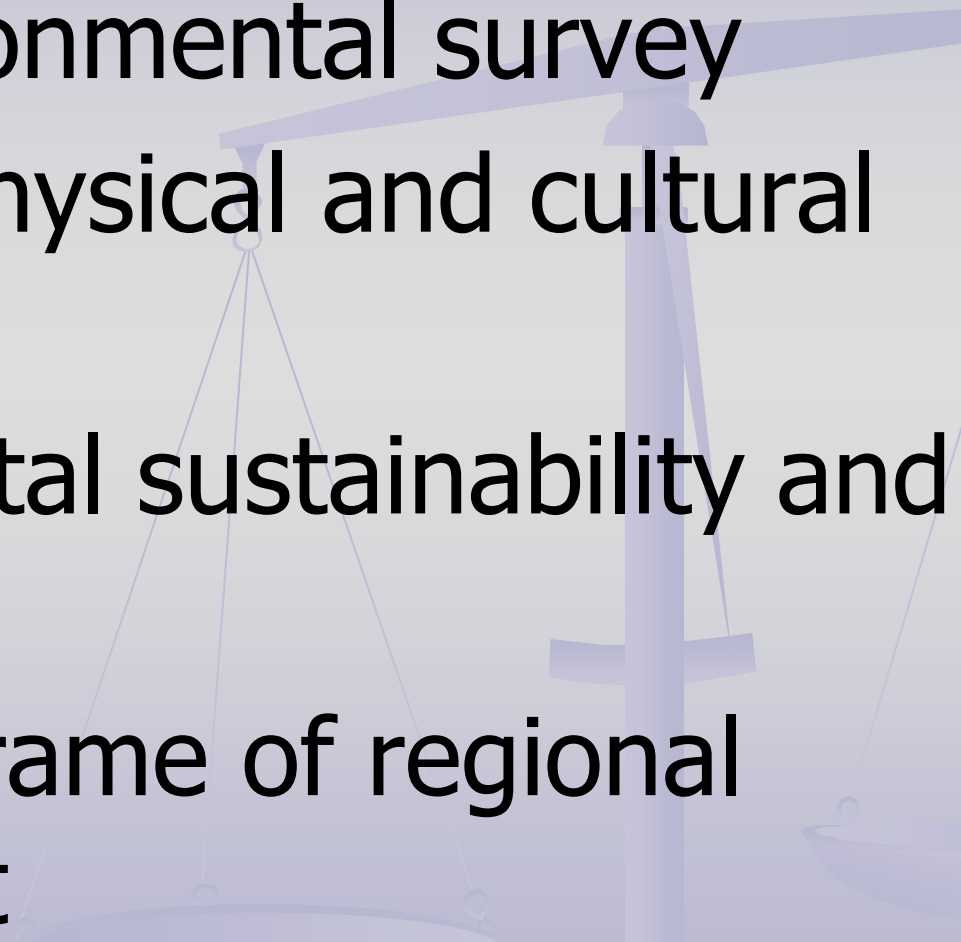
35

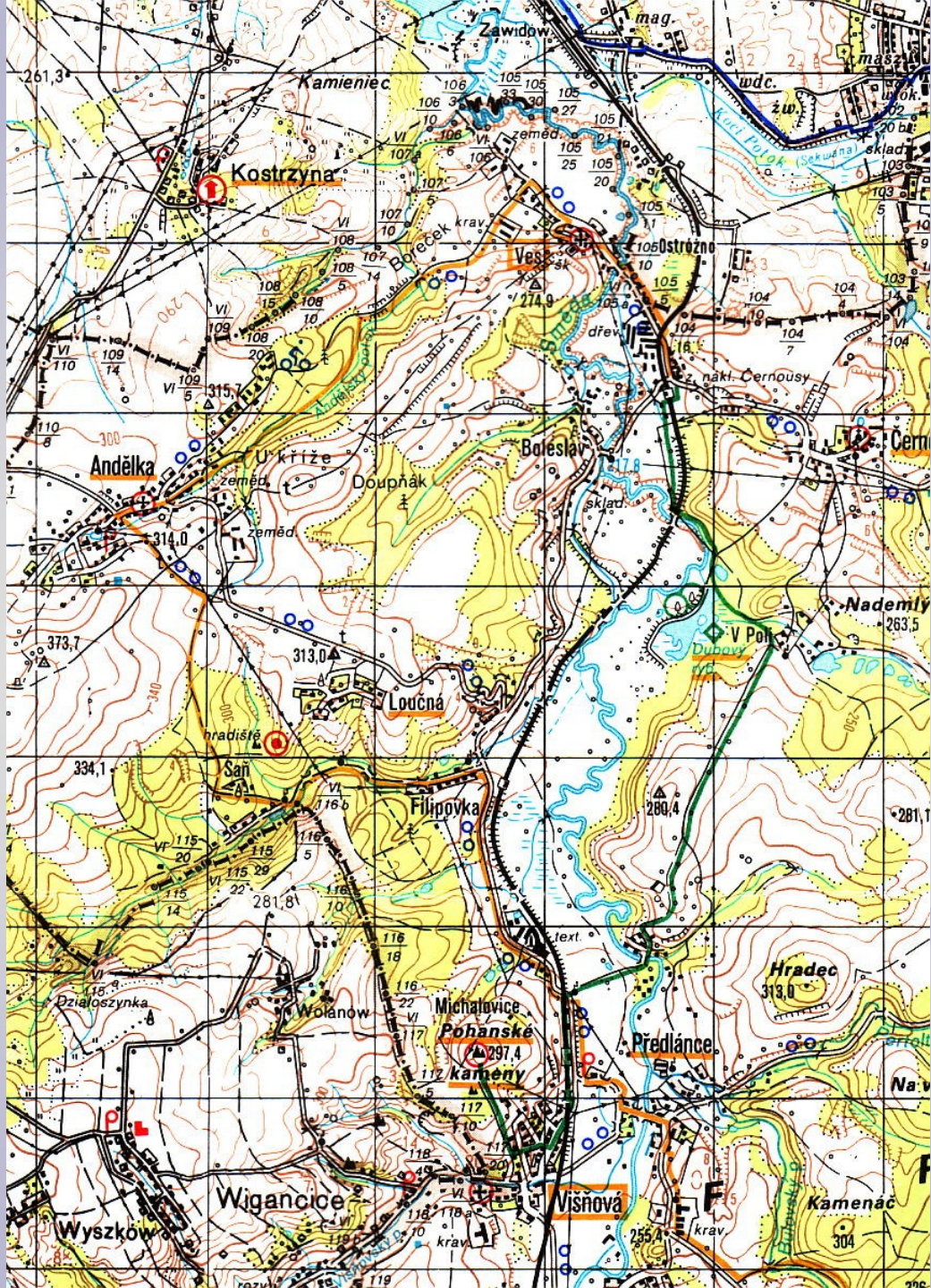
35

592

CHRÁSTAVA

FRY/CZ+POZ/PL+LLZ/G

- ✿ a joint environmental survey
 - ✿ portraying physical and cultural landscapes
 - ✿ environmental sustainability and security
 - ✿ within the frame of regional development
- 



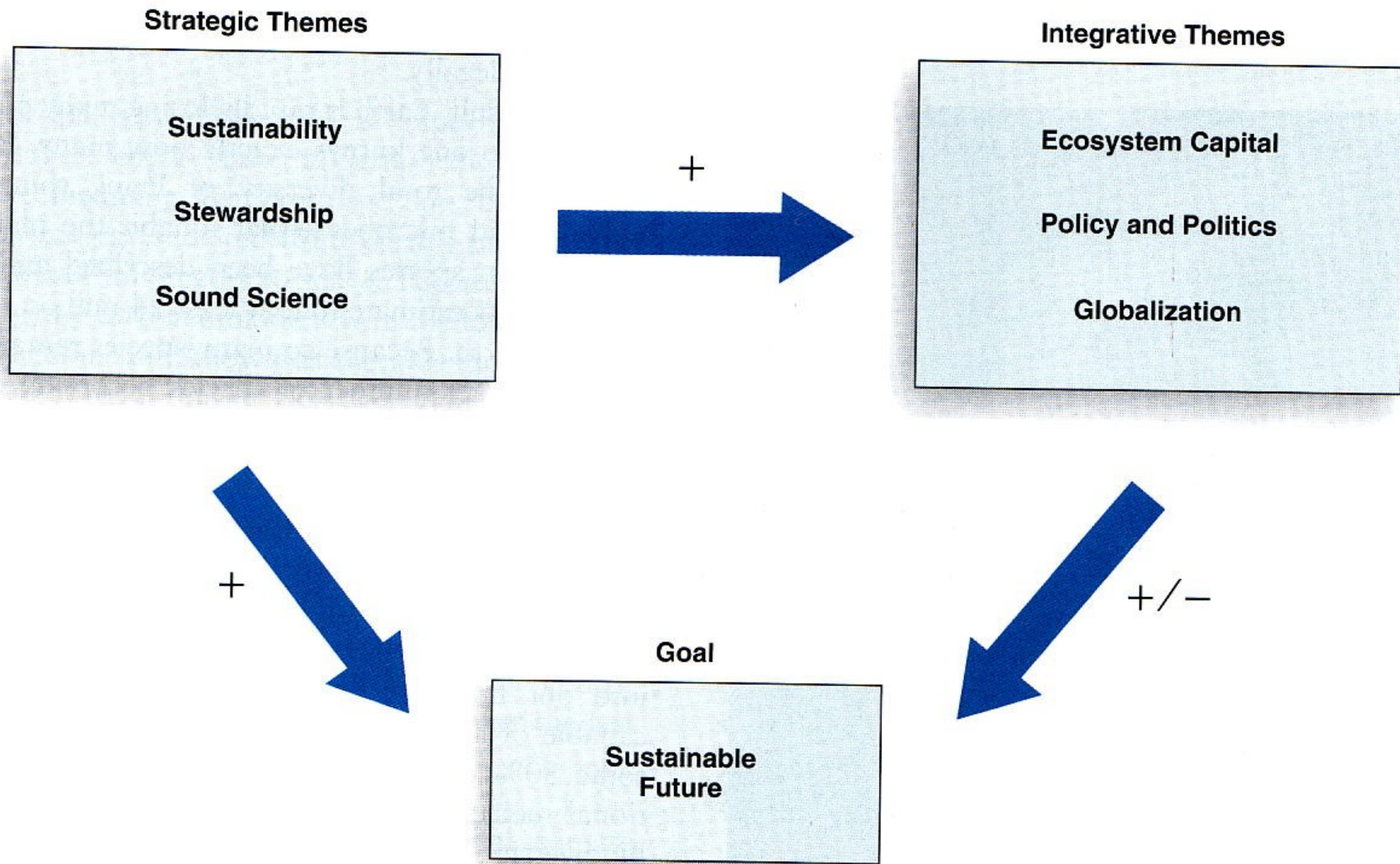


Figure 1-8 Unifying themes. Sustainability, stewardship, and sound science are three *strategic themes* that must be embraced by our society in order to move toward a sustainable future. Ecosystem capital, policy and politics, and globalization are three *integrative themes* that deal with the current status of interactions between human societies and natural systems. Each integrative theme can have positive or negative affects on achieving a sustainable future, and each can be positively influenced by the application of the strategic concepts.

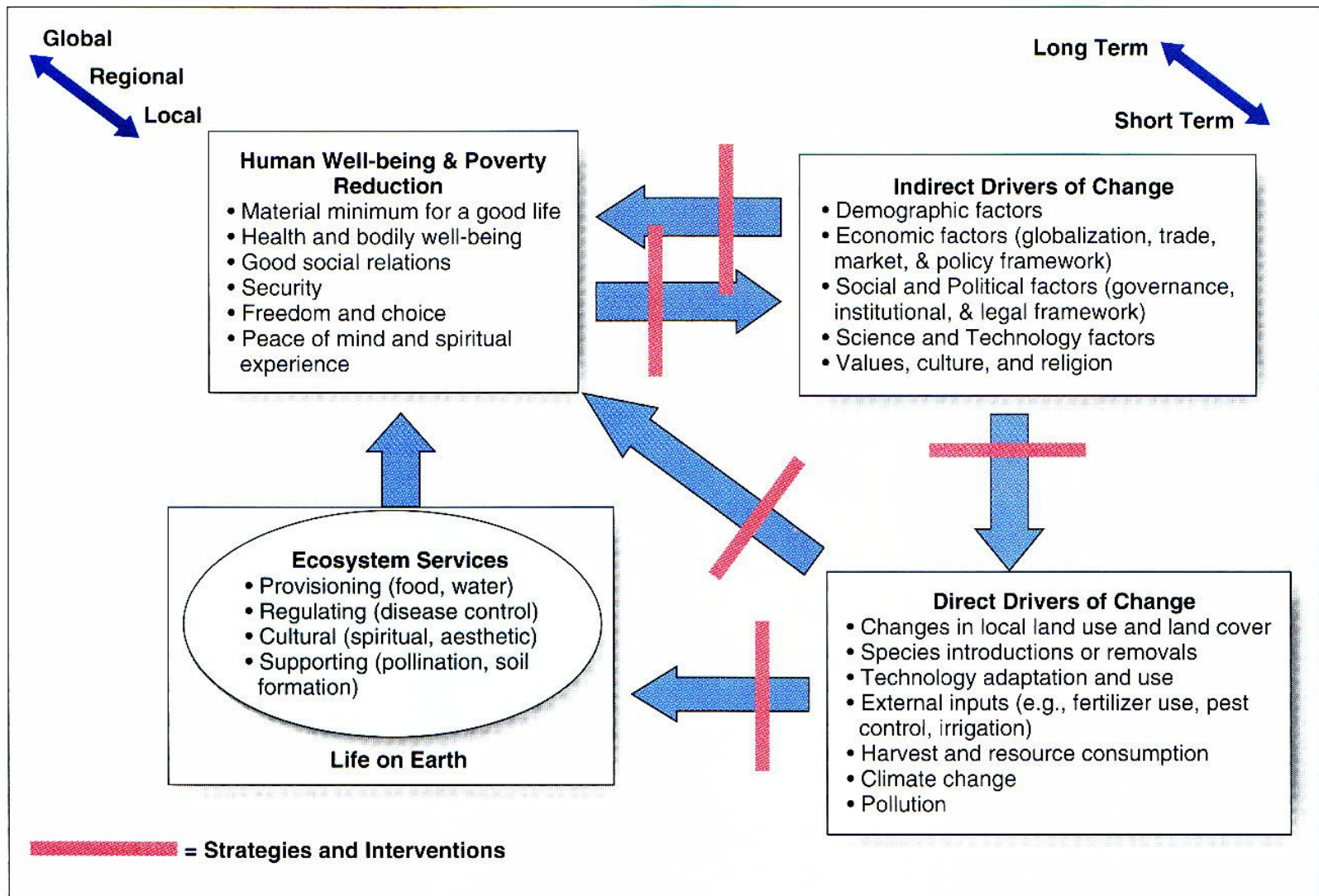


Figure 1-5 Conceptual framework of the Millennium Ecosystem Assessment. The left-hand side of this scheme shows the basic relationship between ecosystem services and human well-being. On the right are the factors that can lead to changes in ecosystems, some acting indirectly, others directly. The changes can be positive or negative. The red crossbars indicate where actions can be taken to enhance positive changes or respond to negative changes. All of these interactions can take place at different spatial (global, regional, local) and temporal (long-term, short-term) scales. (From *Ecosystems and Human Well-being: A Framework for Assessment*. Washington: Island Press, 2003. Used With Permission.)



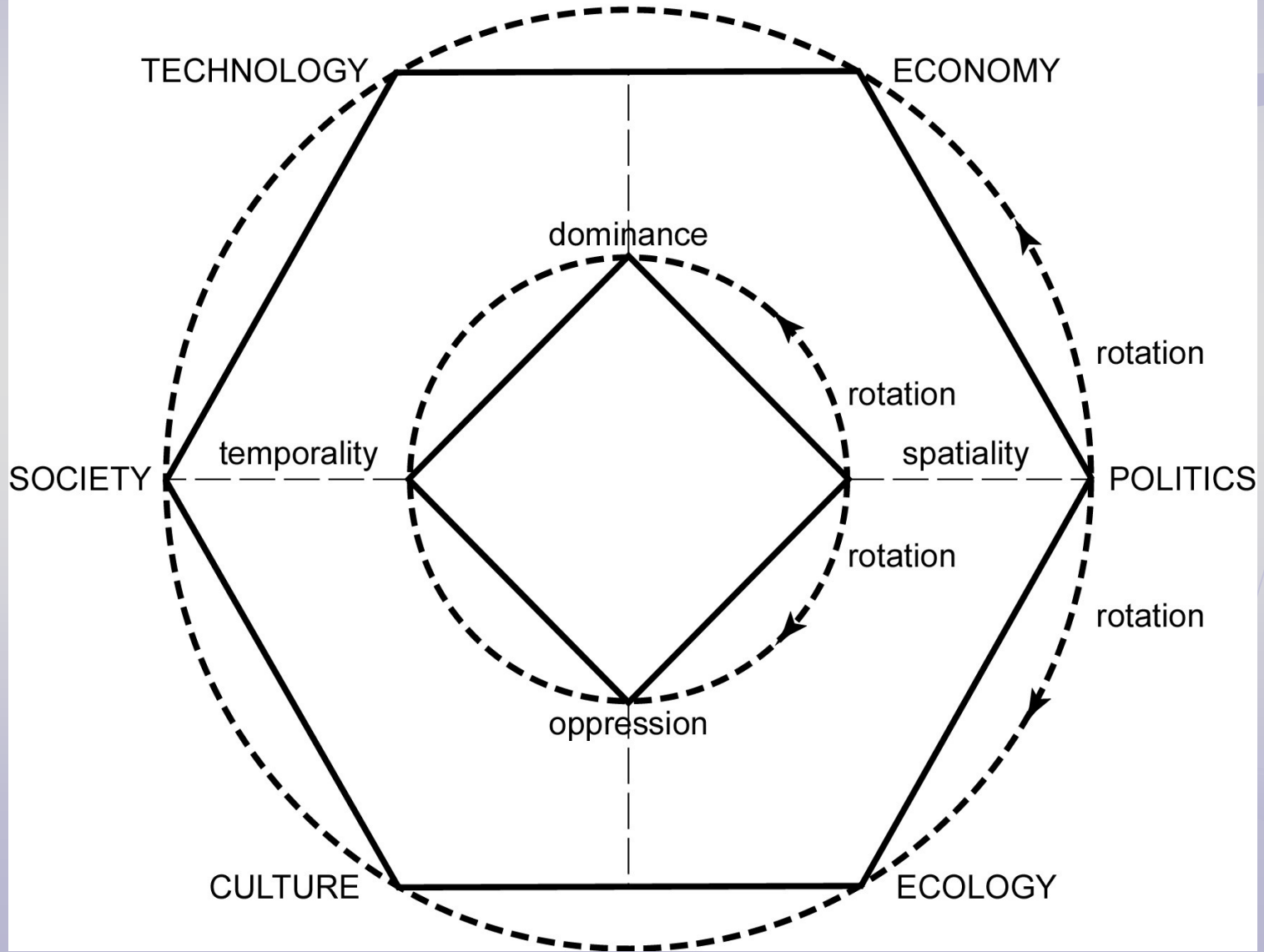
FRY field research during the forthcoming summer

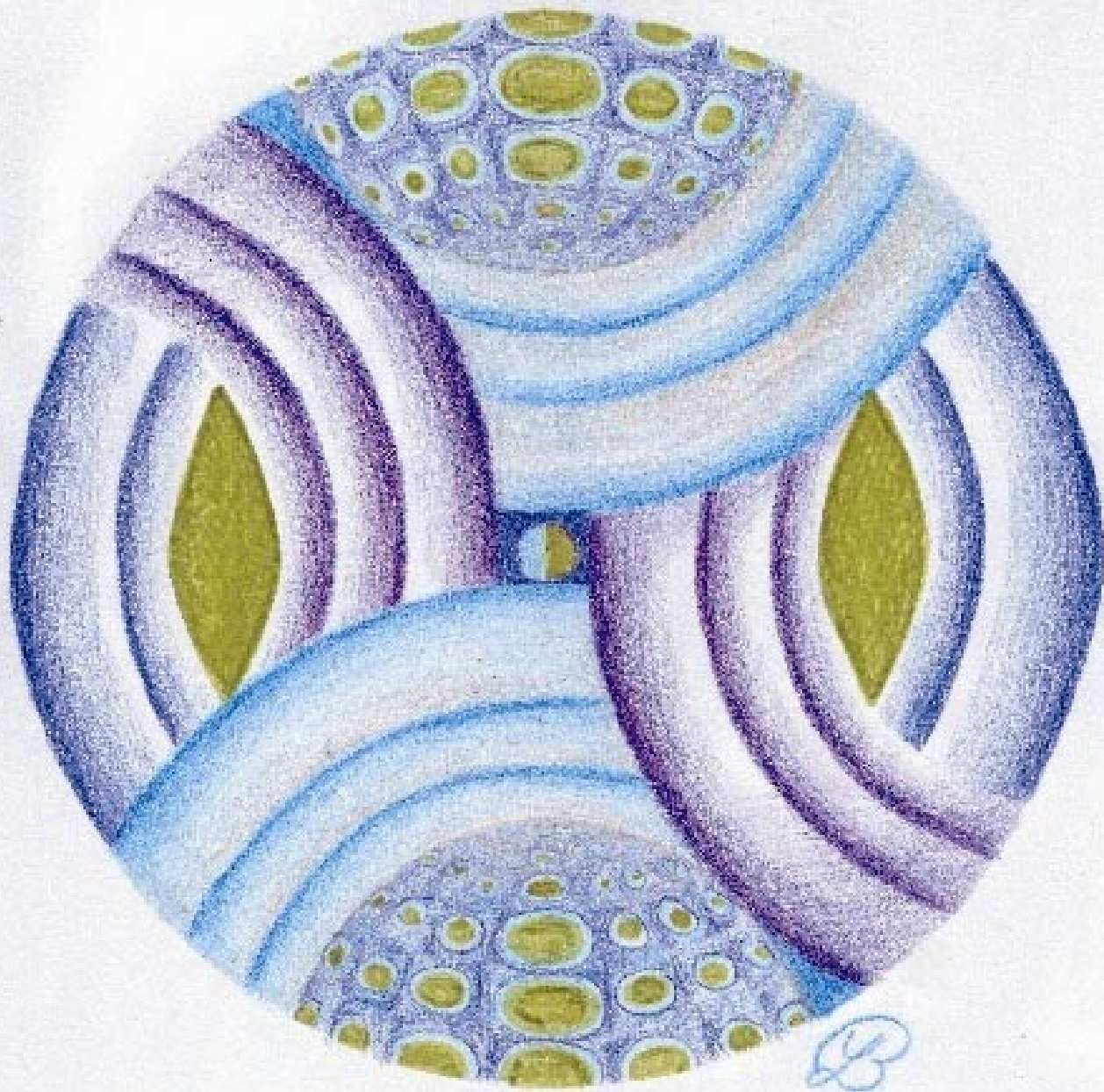
mapping patterns of spatial dominance and oppression in:

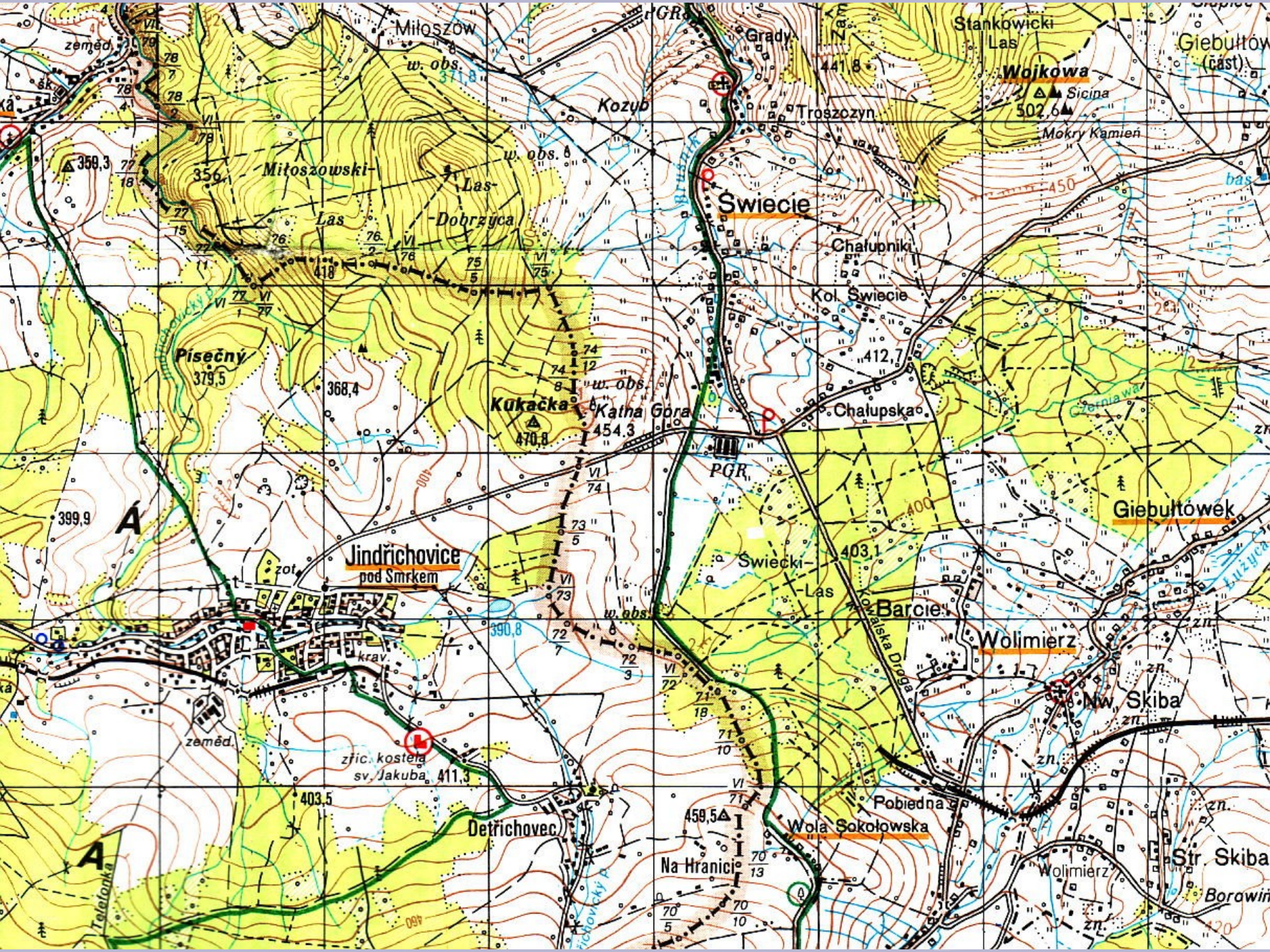
- ecology
- economy
- society
- politics
- culture
- and technologies



ESPECT & TODS







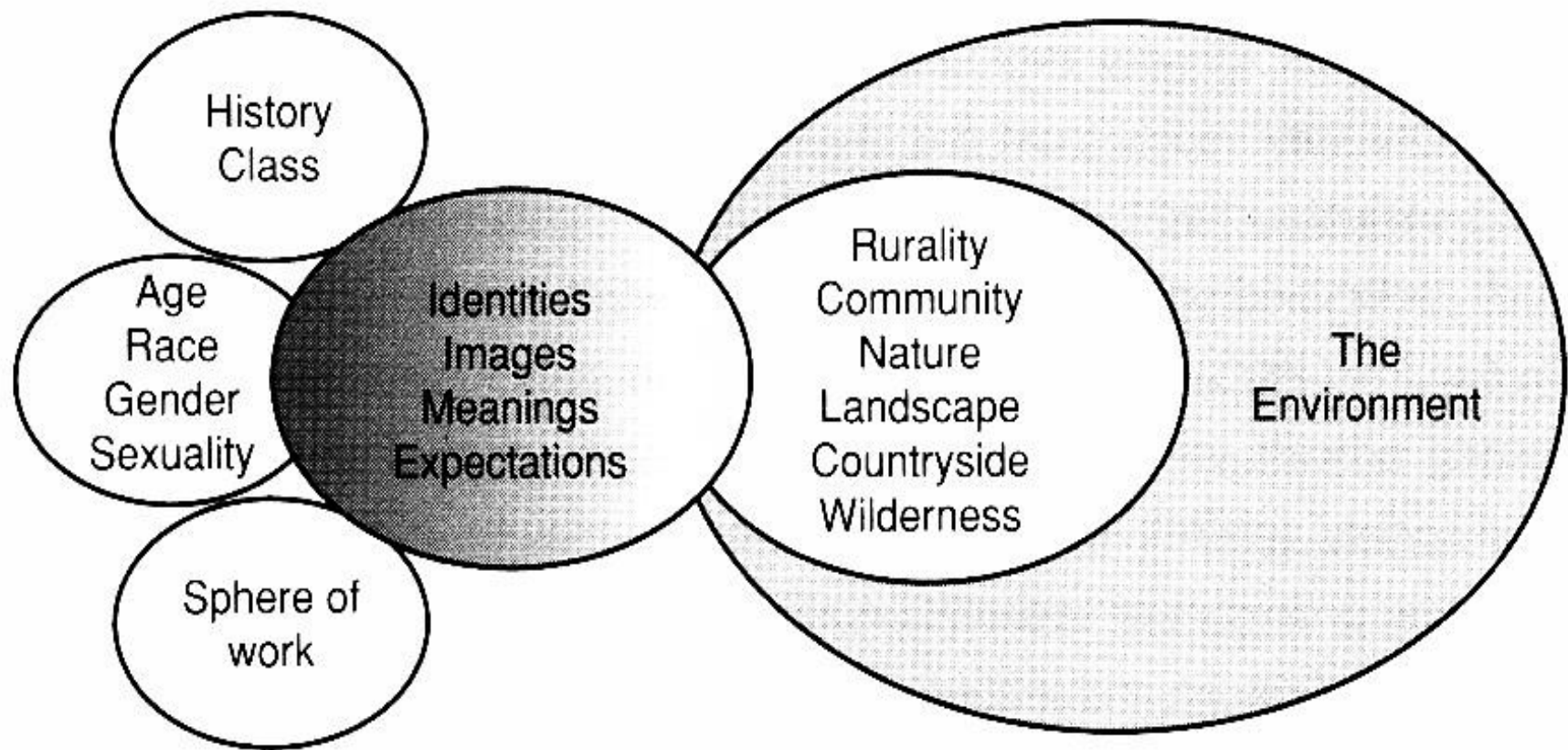
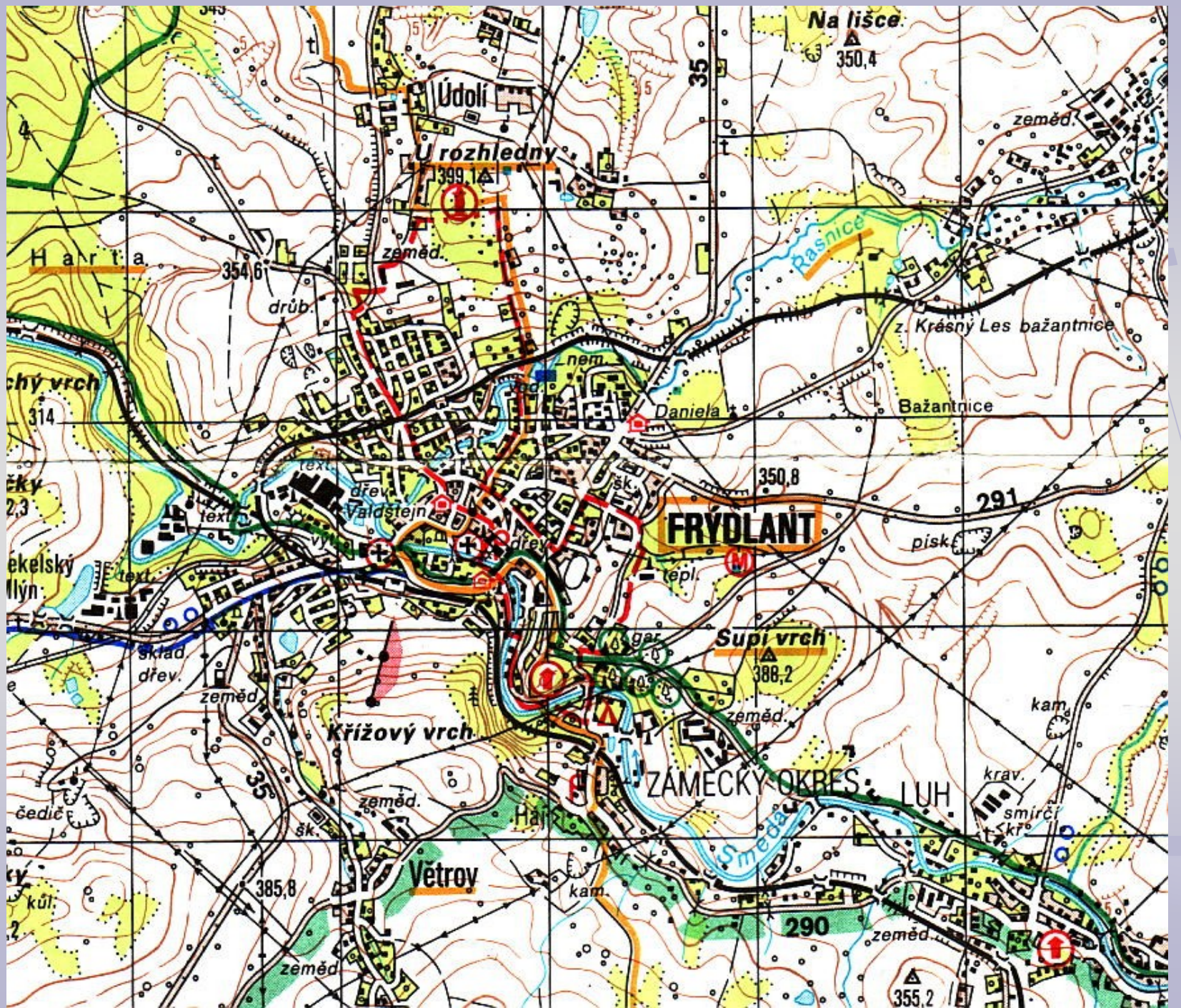


Figure 9.1 *Social constructions and environmental realities.*



special focus on environmental performativity

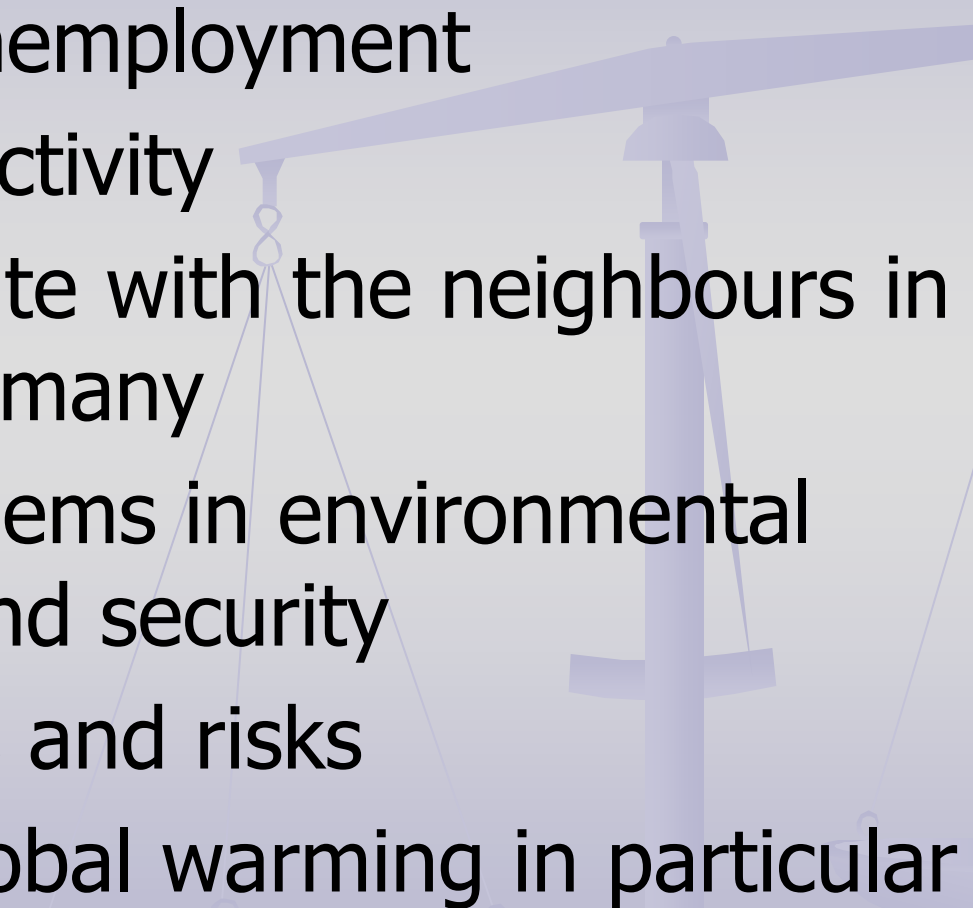
**the issues of social construction,
discourse among:**

- ➡ **decision-makers**
- ➡ **shareholders**
- ➡ **stakeholders**
- ➡ **placeholders**
- ➡ **and non-state actors**

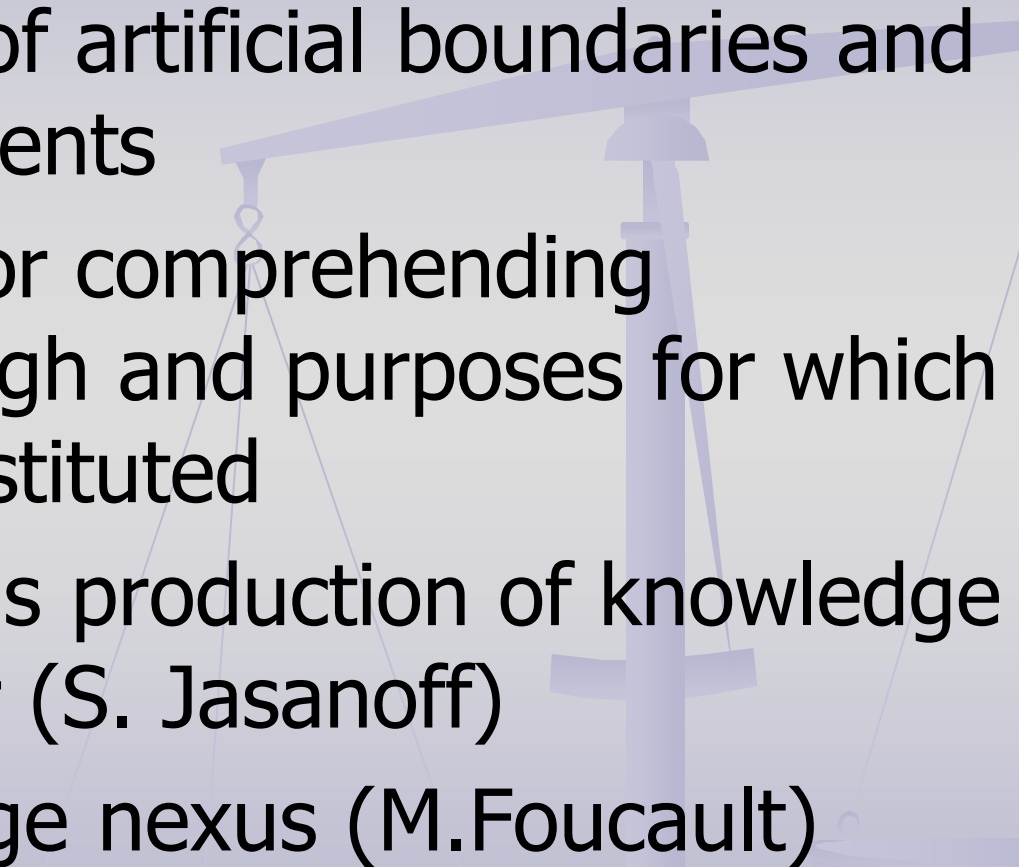




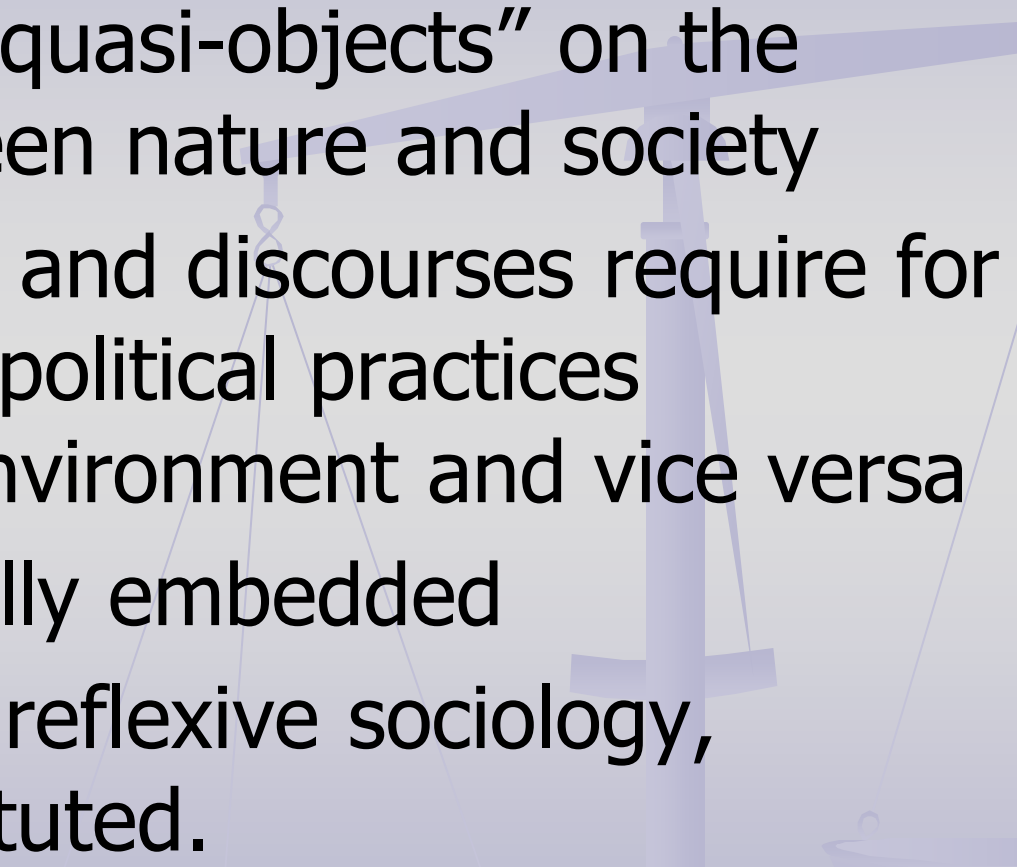
The social dimension of:


- high rate of unemployment
 - low business activity
 - how to cooperate with the neighbours in Poland and Germany
 - prevailing problems in environmental sustainability and security
 - natural hazards and risks
 - in the era of global warming in particular
- 

the process of hybridization/coproductions

- the dissolution of artificial boundaries and linear arrangements
 - a prerequisite for comprehending processes through and purposes for which hybrids are constituted
 - the simultaneous production of knowledge and social order (S. Jasanoff)
 - power/knowledge nexus (M.Foucault)
- 

Bruno Latour (1993) :

- ✚ emergence of “quasi-objects” on the interface between nature and society
 - ✚ ecological facts and discourses require for their existence political practices pertaining to environment and vice versa
 - ✚ they are mutually embedded
 - ✚ in the terms of reflexive sociology, mutually constituted.
- 

 "Social" and "natural" changes are hybrid

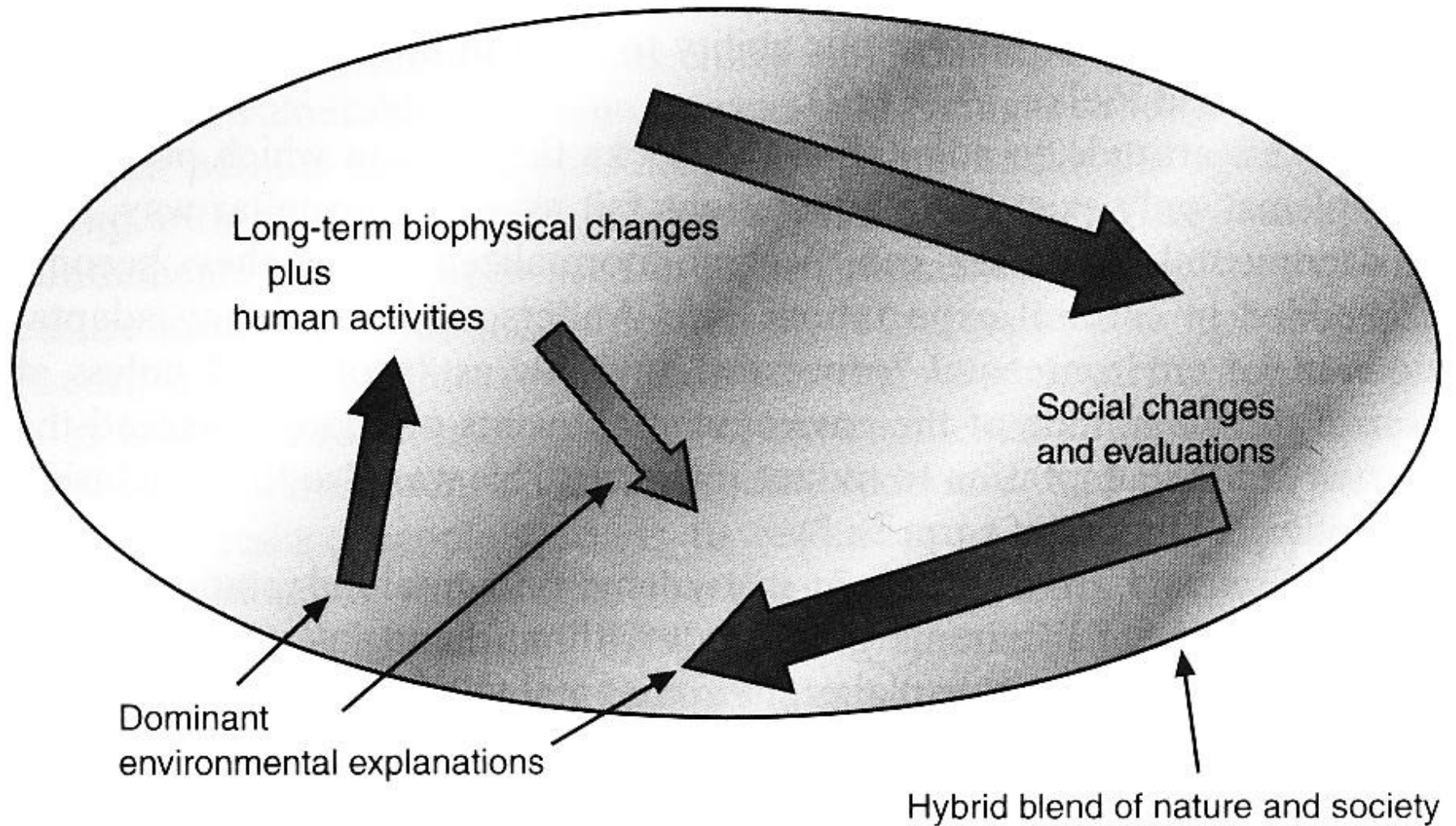


Figure 7.2 A non-linear, constructivist model for environmental hazards

Source: the author.

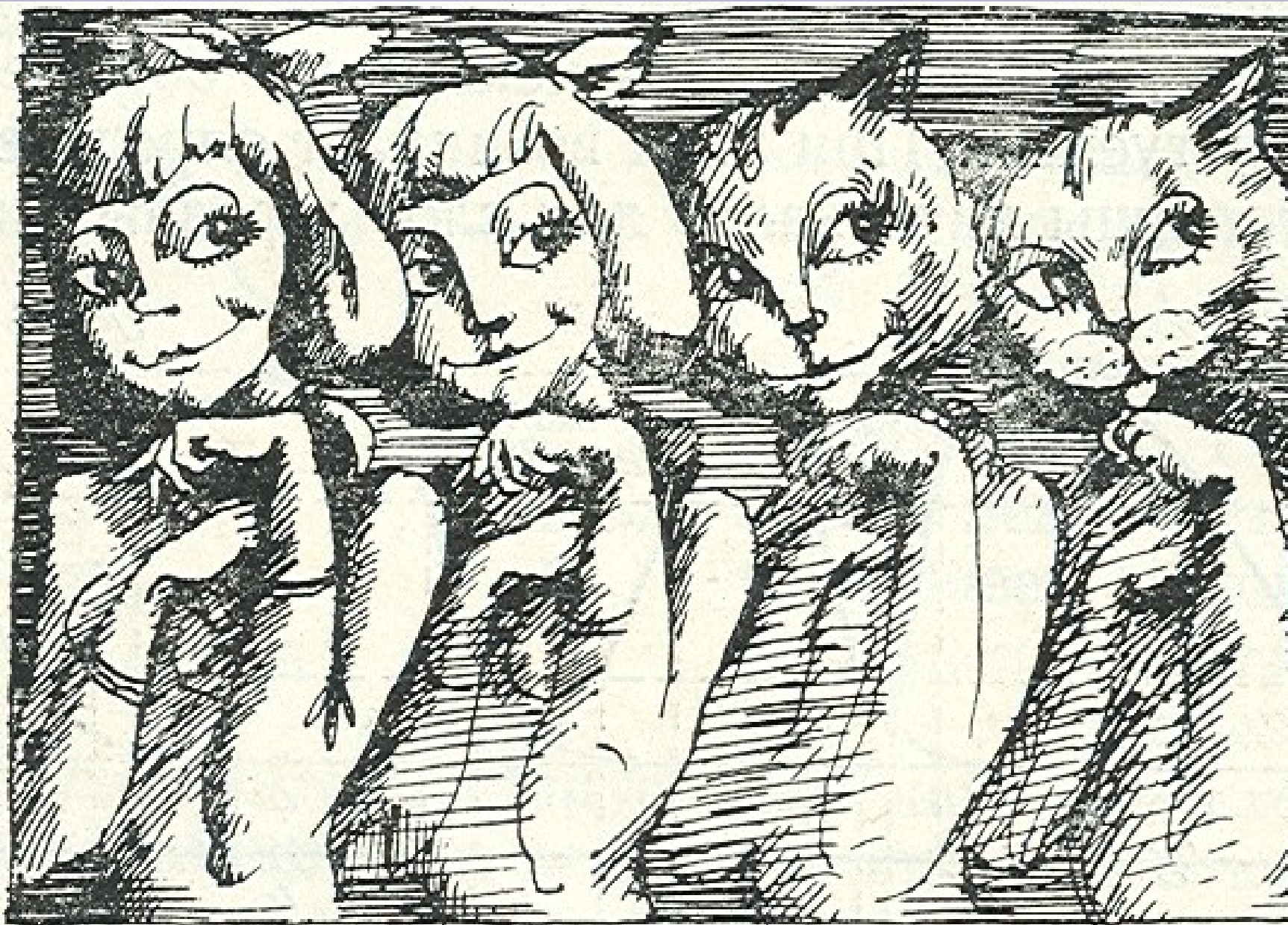


Рис. 2.18

I am flattered by your attention....

