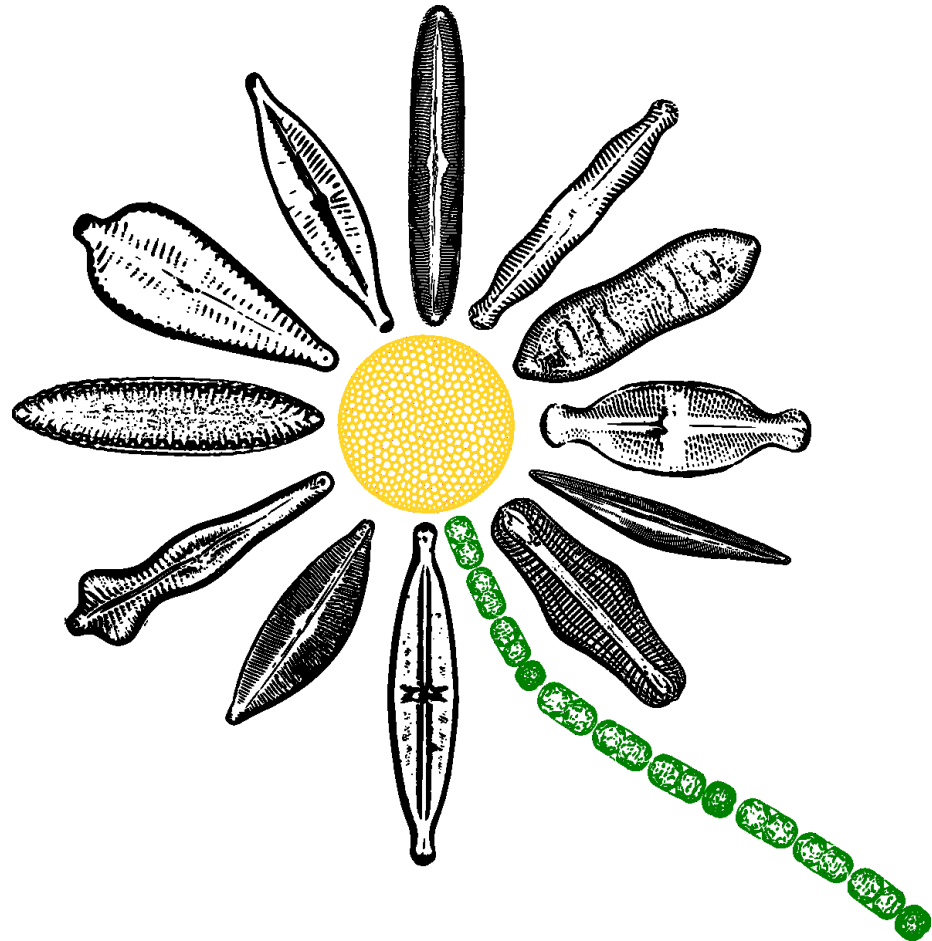


# Rozsivky

## Třída Bacillariophyceae

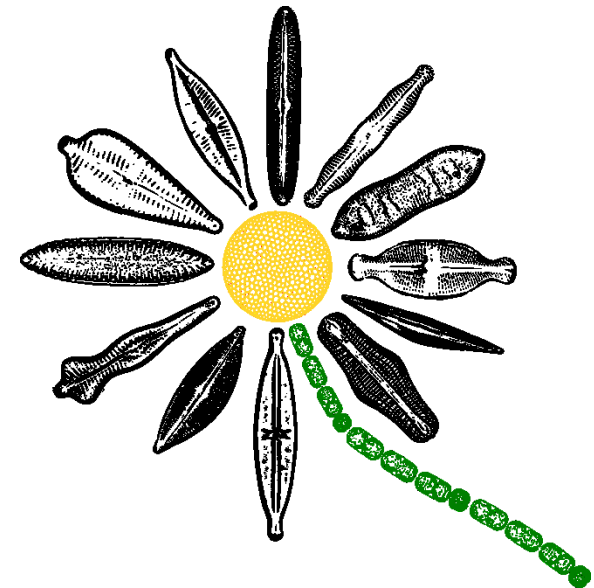


# Oddělení Heterokontophyta (Stramenopila)

- Fotoautotrofní řasy
- Pleuronematický bičík (pohybový)
- Akronematický bičík
- Chromatofory se 4 membránami
- Chlorofyl a, c
- Fukoxantin, vaucheriaxantin
- Olej, polyfosfátová zrnka – volutin

## Třídy:

- **Bacillariophyceae**
- Chrysophyceae
- Xanthophyceae
- Phaeophyceae



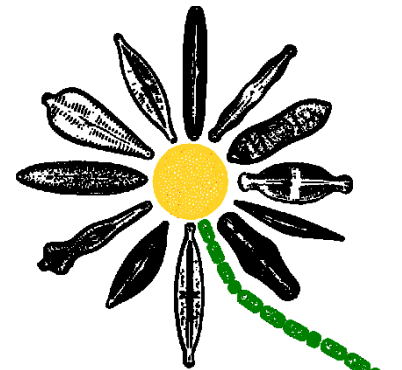
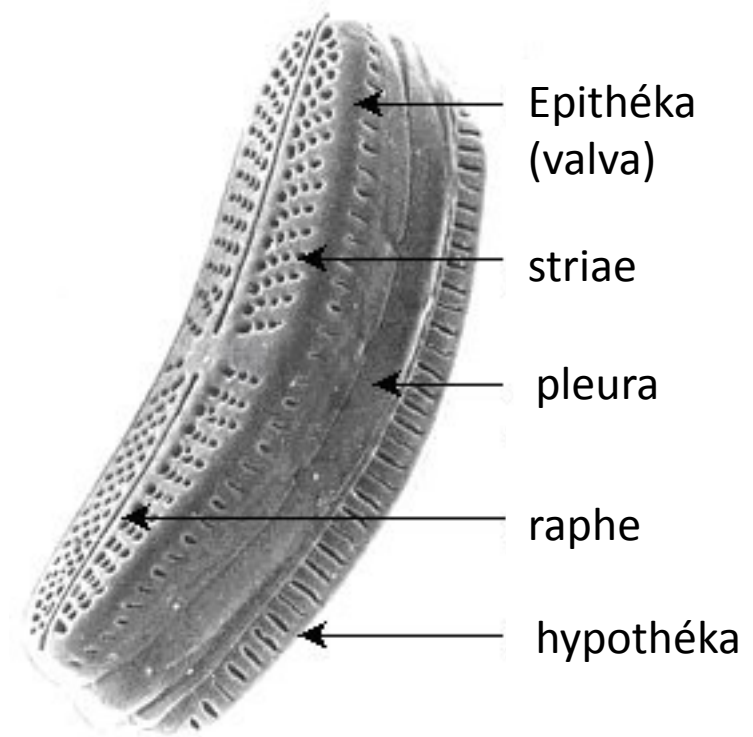


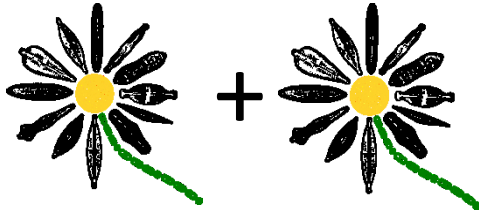
# Obecná charakteristika

- Jednobuněčné
- Převážně vodní
- Žijící jednotlivé či v koloniích
- Dvoudílná křemitá frustula
- Diatotepin
- Polymer  $\text{SiO}_2$
- Hnědé chloroplasty
- Chlorofyly a,  $c_1, c_2, c_3$
- Xanthofyly - **fukoxantin**,
- Chrysolaminaran, olej
- Diktyozomy –produkce slizu a polysacharidů
- Pleuronematický bičík - gamety
- Diplontní životní cyklus
- Diatomit (křemelina)

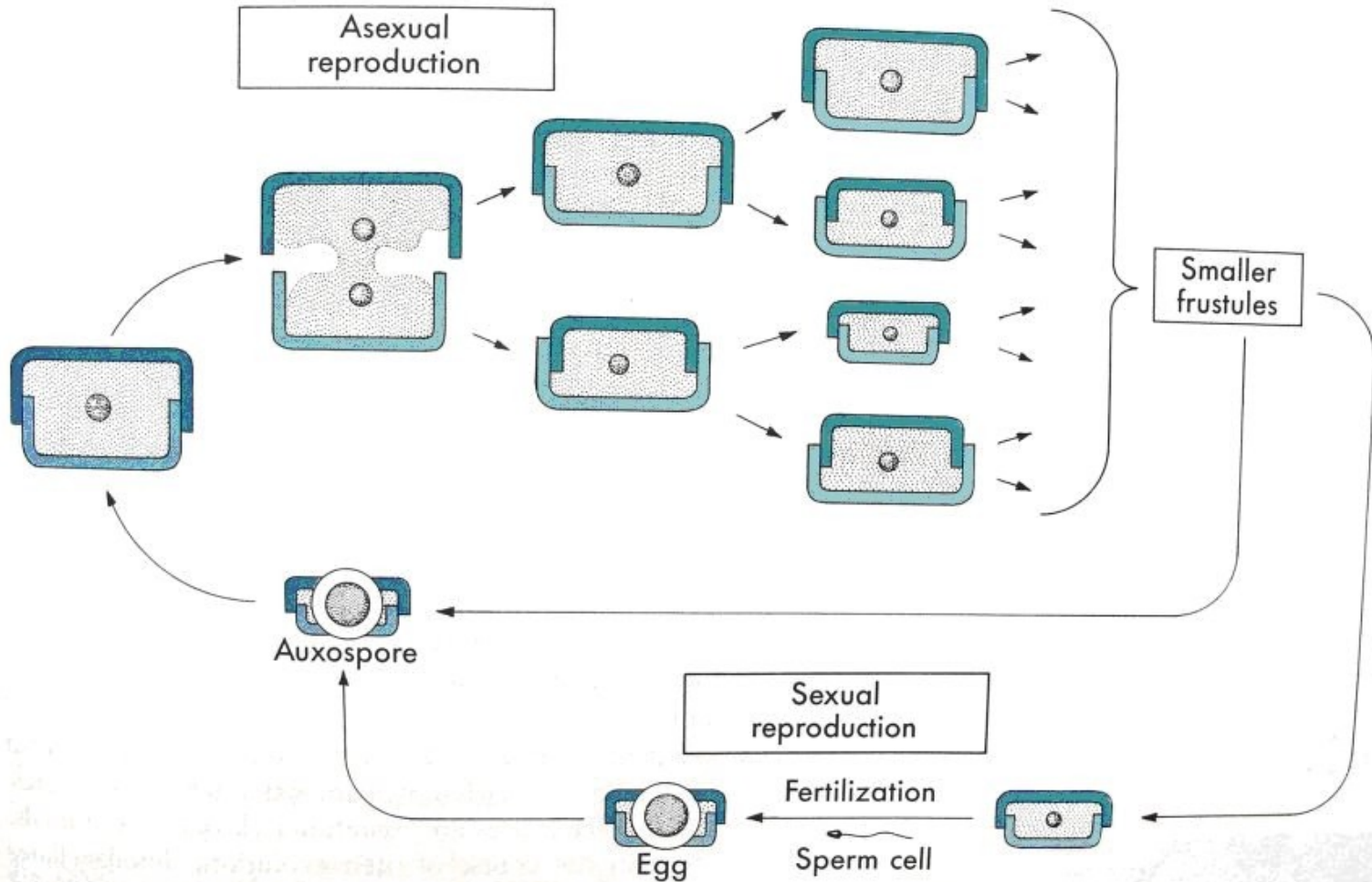
# Morfologie

- Schránka- frustula
- Epithéka
- Hypothéka
- Valva
- Pleura
- Raphe
- Striae
- Centrální nodulus
- Radiálně souměrné – Centrické
- Dvoustraně souměrné – Penátní

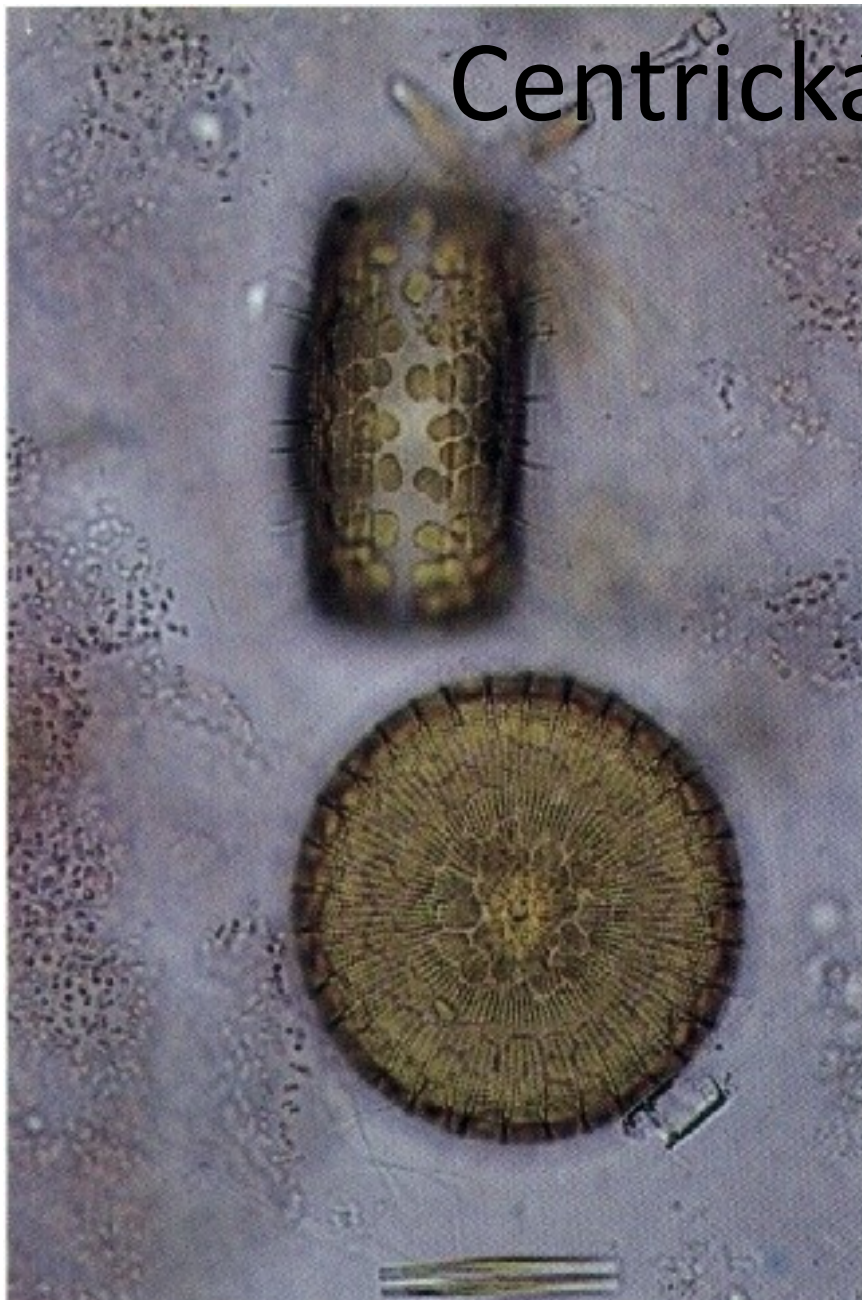




# Rozmnožování

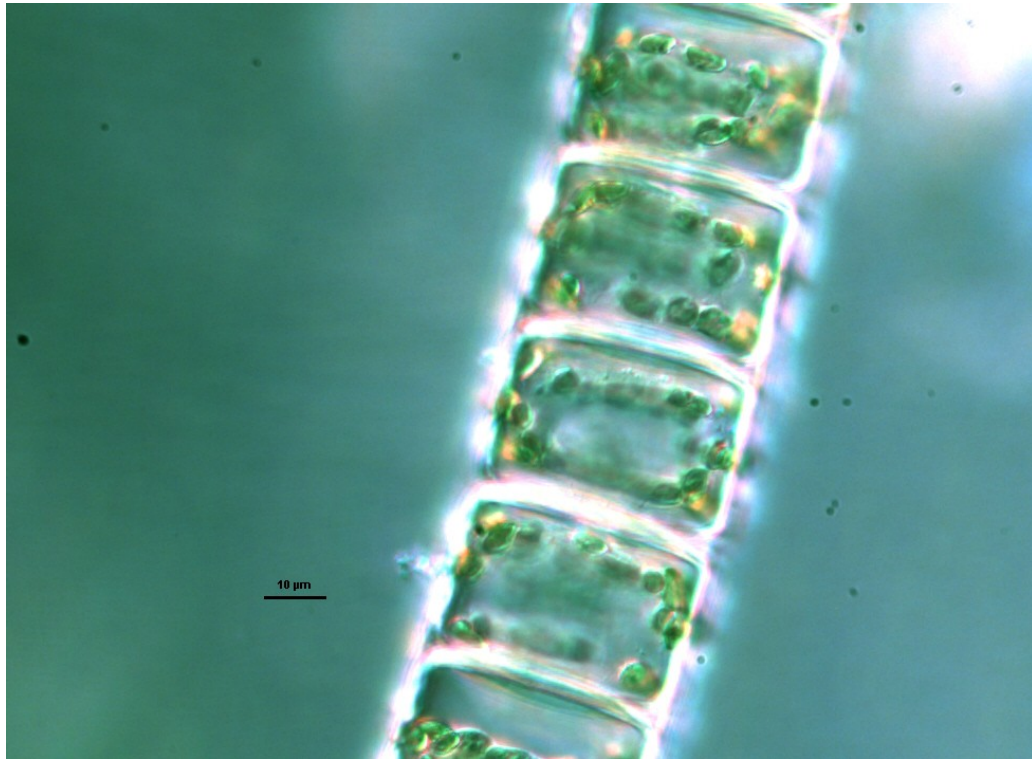


# Centrická rozsivka

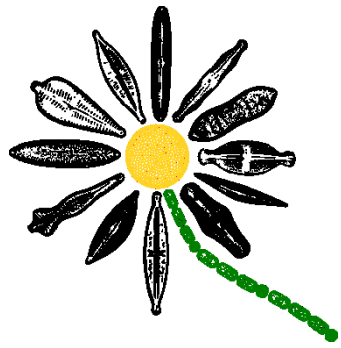


*Stephanodiscus* sp.

Odd.: Heterokontophyta Třída: Bacillariophyceae  
Podtřída: Coscinodiscophycidae Řád: Coscinodiscales



*Melosira* sp.



*Cyclothella* sp.





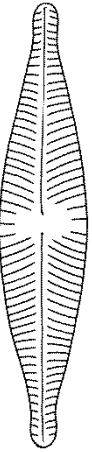
# Nativní preparát



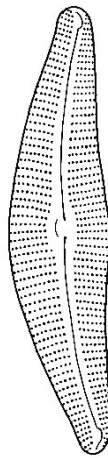
*Melosira*



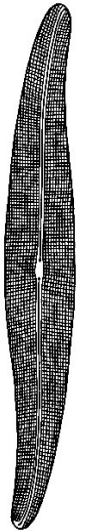
*Navicula*



*Cymbella*

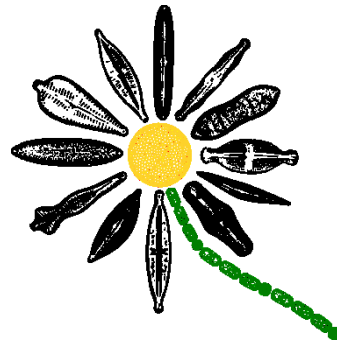
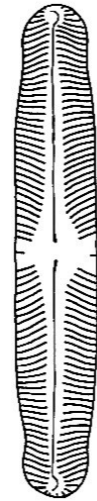
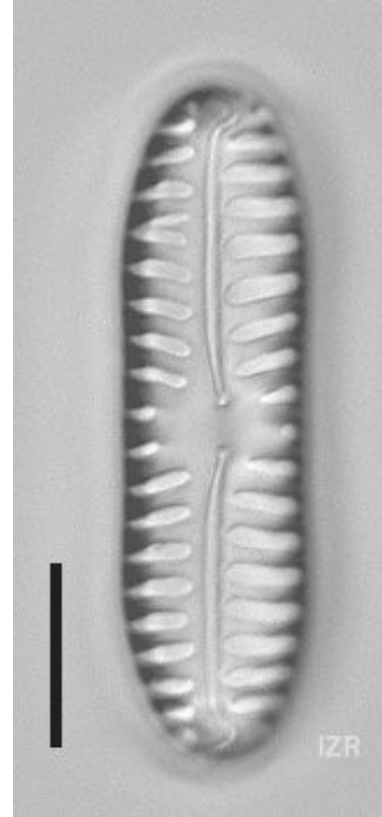
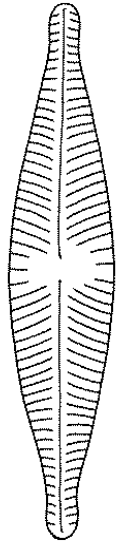
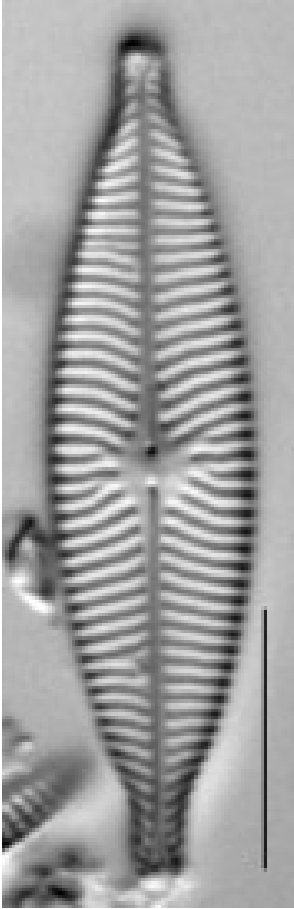


*Gyrosigma*

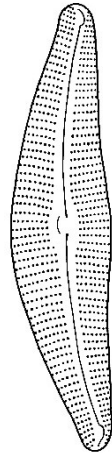
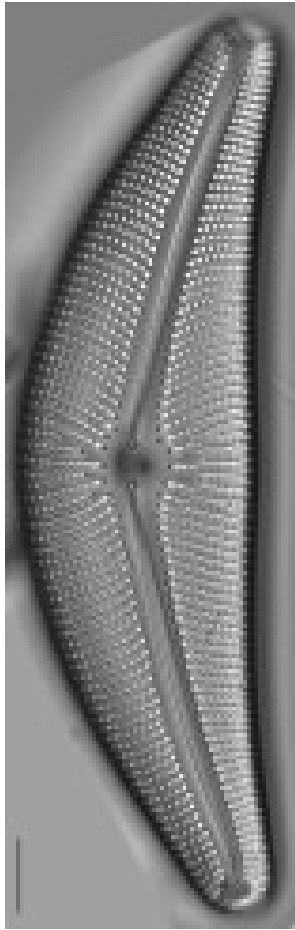


*Navicula* sp.

*Pinnularia* sp.



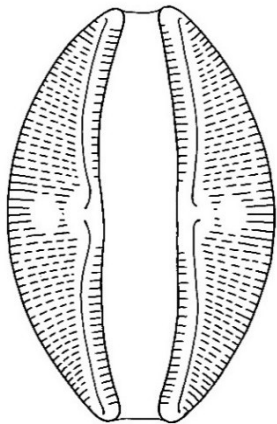
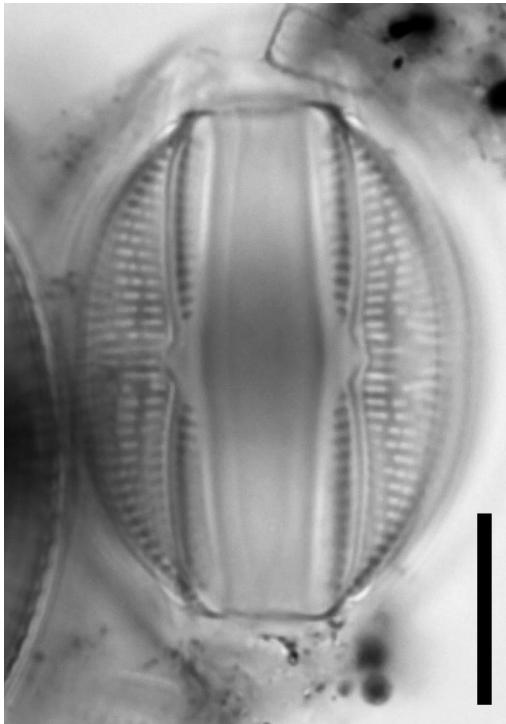
*Cymbella* sp.



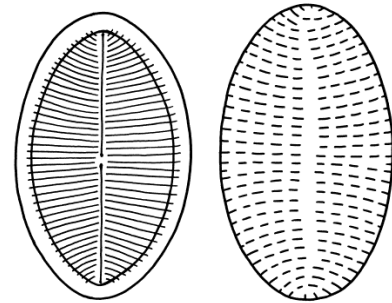
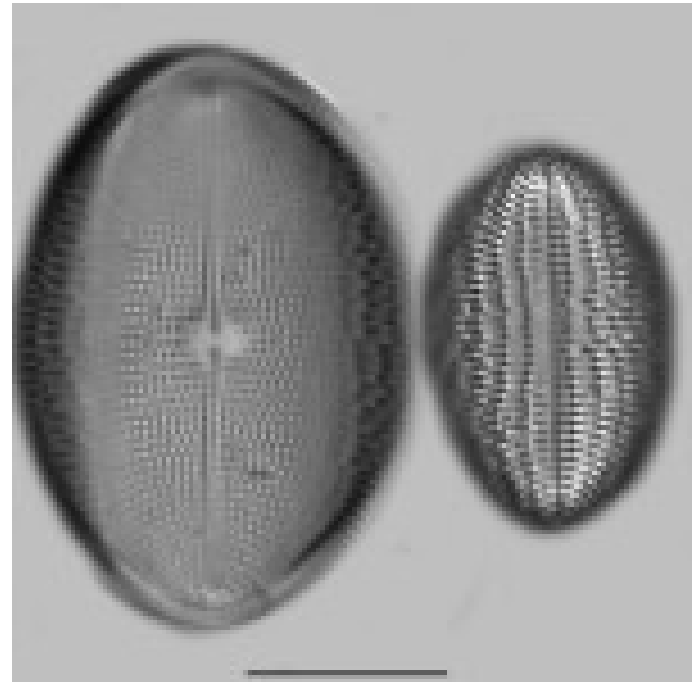
*Gyrosigma* sp.



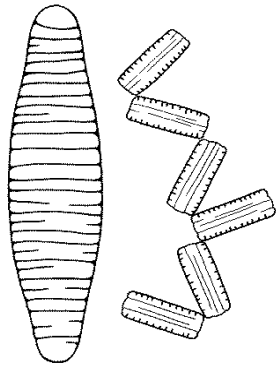
*Amphora* sp.



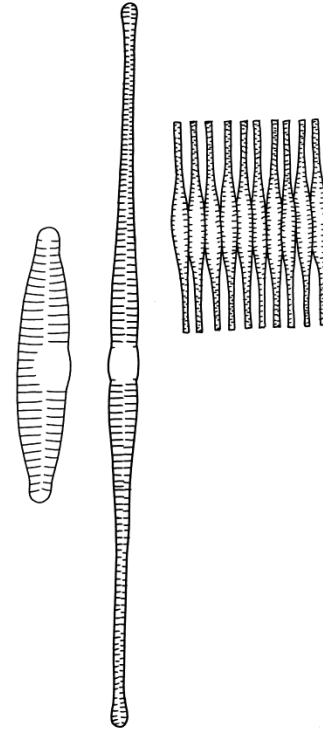
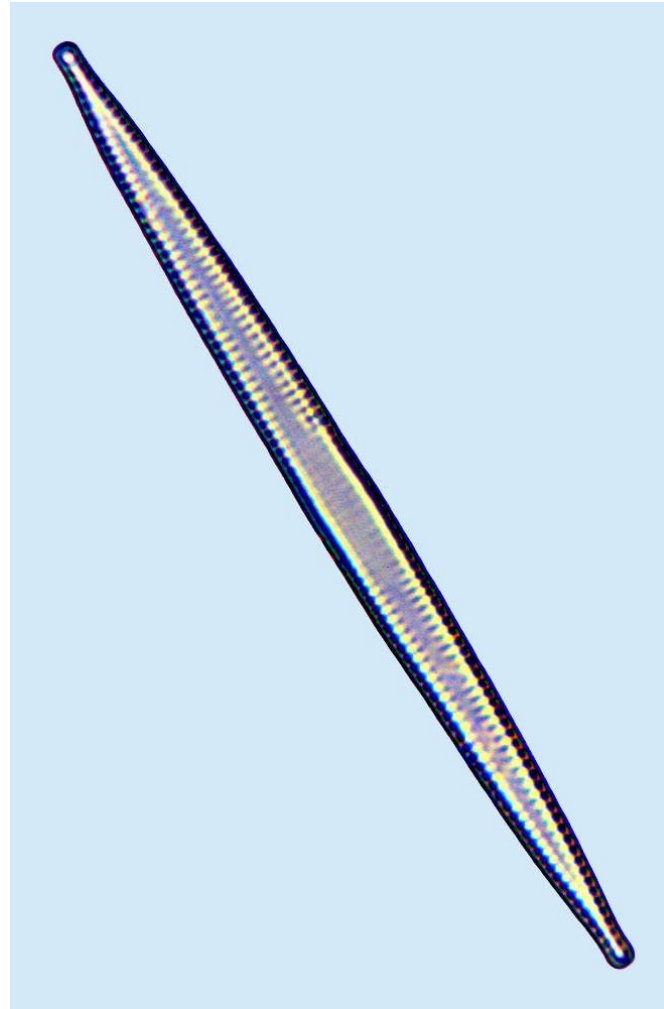
*Cocconeis* sp.



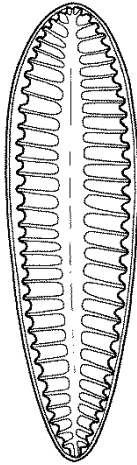
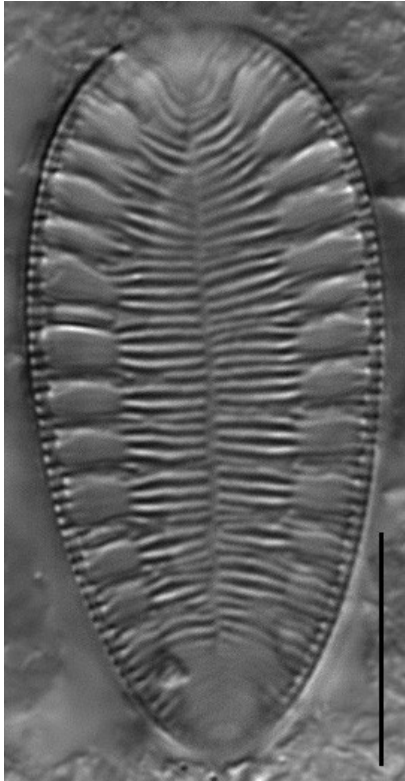
*Diatoma* sp.



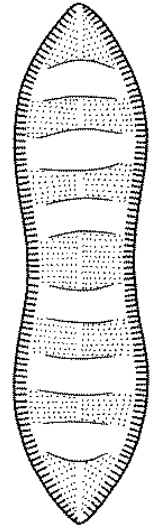
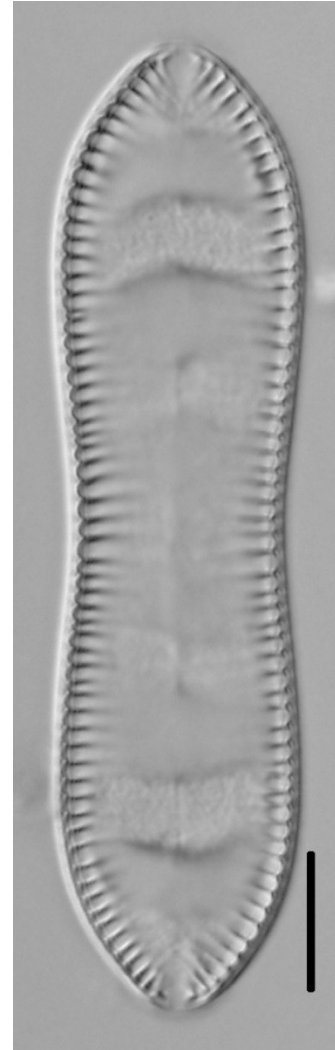
*Fragilaria* sp.



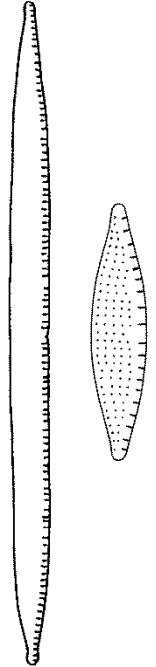
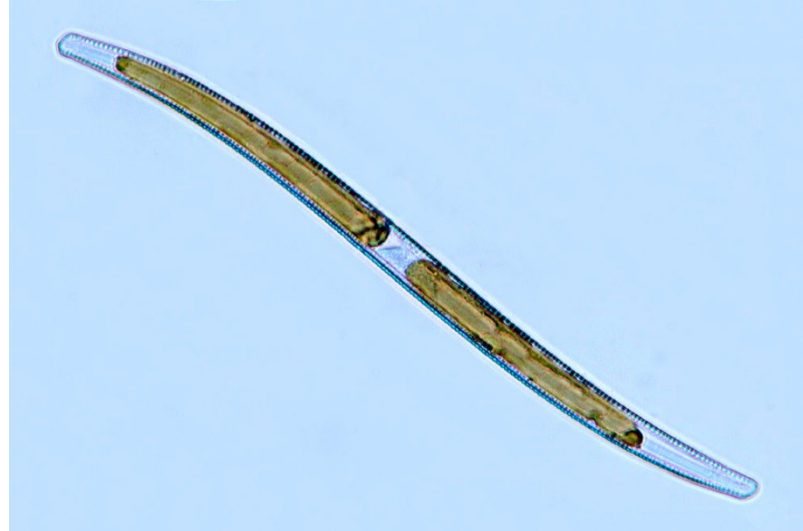
*Surirella* sp.



*Cymatopleura* sp.



# *Nitzschia* sp.





# Objekty

## Třída: Bacillariophyceae

Centrické: ***Melosira*** (kolonie z pleurálního pohledu)

Penátní s raphe na obou valvách: ***Navicula***, ***Gyrosigma***, *Pinnularia*, *Cymbella*, *Amphora*

Penátní s raphe na jedné valvě: *Cocconeis*

Penátní bez raphe: *Diatoma*, *Fragilaria*

Penátní s kanálkovou raphe: *Surirella*, *Cymatopleura*, *Nitzschia*, *Hantzschia*

- ***Melosira***, ***Navicula***, ***Gyrosigma*** + 6 dalších



# Děkuji za pozornost!

