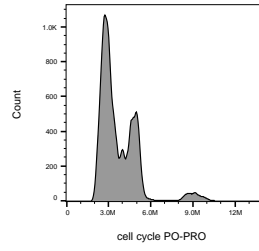
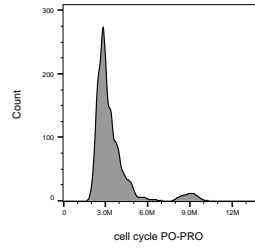


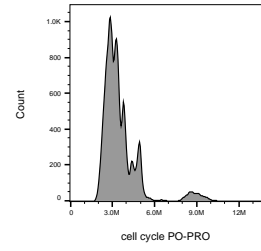
PO-PRO test DU145 Lily MLN iso.fcs
Cell cycle
70.5%
9024,0



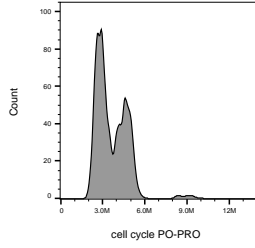
PO-PRO test DU145 Lily MLN spec.fcs
Cell cycle
68.1%
34570,0



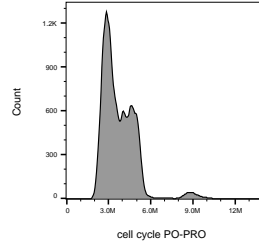
PO-PRO test DU145 Lily ctrl iso.fcs
Cell cycle
73.4%
7125,0



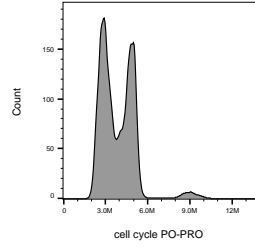
PO-PRO test DU145 Liz ctrl spec.fcs
Cell cycle
76.3%
31473,0



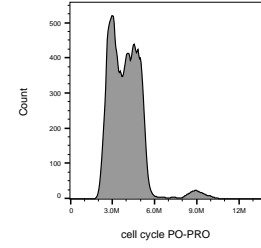
PO-PRO test DU145 Terka MLN iso.fcs
Cell cycle
49.9%
3204,0



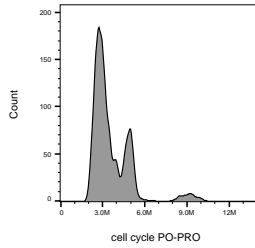
PO-PRO test DU145 Terka MLN spec.fcs
Cell cycle
72.3%
45683,0



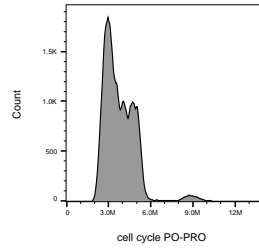
PO-PRO test DU145 Terka ctrl iso.fcs
Cell cycle
60.7%
7259,0



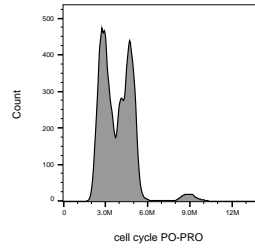
PO-PRO test DU145 Terka ctrl spec.fcs
Cell cycle
60.7%
25016,0



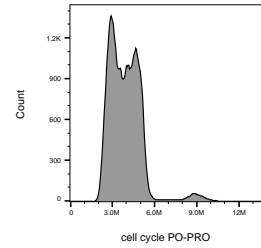
PO-PRO test DU145 eva MLN iso.fcs
Cell cycle
69.3%
5669,0



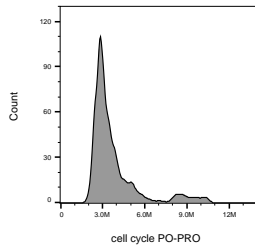
PO-PRO test DU145 eva MLN sp.fcs
Cell cycle
68.2%
70941,0



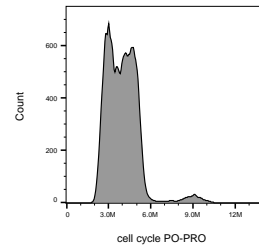
PO-PRO test DU145 eva ctrl iso.fcs
Cell cycle
60.6%
20372,0



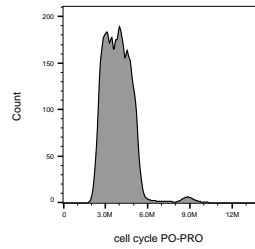
PO-PRO test DU145 eva ctrl sp.fcs
Cell cycle
62.9%
62366,0



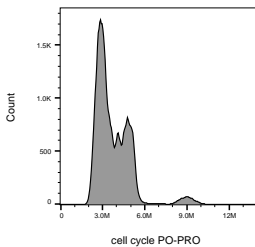
PO-PRO test DU145 sandra MLN spec.fcs
Cell cycle
47.6%
3118,0



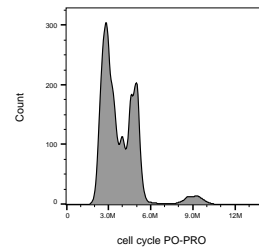
PO-PRO test DU145 sandra ctrl spec.fcs
Cell cycle
63.7%
33449,0



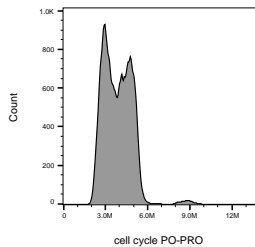
PO-PRO test DU145 sandra ctrl iso.fcs
Cell cycle
66.2%
9574,0



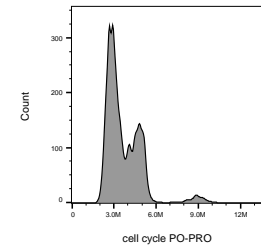
PO-PRO test DU145 zita MLN sp.fcs
Cell cycle
66.0%
58333,0



PO-PRO test DU145 zita ctrl iso.fcs
Cell cycle
47.6%
11303,0



PO-PRO test DU145 zita ctrl sp2.fcs
Cell cycle
52.1%
41285,0



PO-PRO test DU145 zita MLN iso.fcs
Cell cycle
56.2%
10452,0