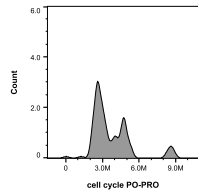
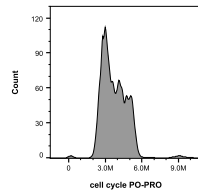


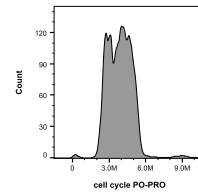
PO-PRO test DU145 Martina J ctrl iso.fcs
Compact population
26.7%
177.0



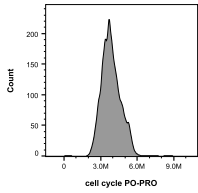
PO-PRO test DU145 Martina J ctrl min iso.fcs
Compact population
33.9%
116.0



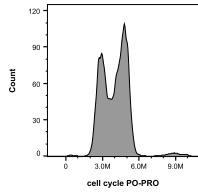
PO-PRO test DU145 Martina J ctrl min spec.fcs
Compact population
47.7%
4724.0



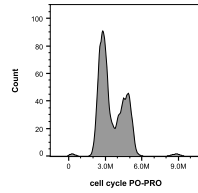
PO-PRO test DU145 Martina J ctrl spec.fcs
Compact population
43.8%
7360.0



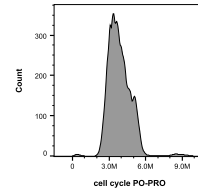
PO-PRO test DU145 Martina T ctrl iso.fcs
Compact population
85.6%
9149.0



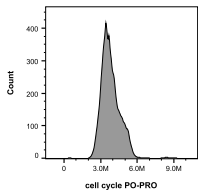
PO-PRO test DU145 Martina T ctrl spec.fcs
Compact population
49.7%
4972.0



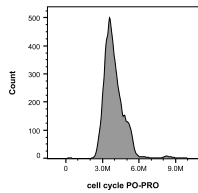
PO-PRO test DU145 Martina T min iso.fcs
Compact population
62.1%
3266.0



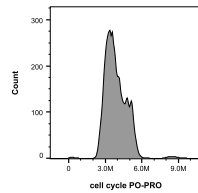
PO-PRO test DU145 Martina T min spec.fcs
Compact population
51.1%
15321.0



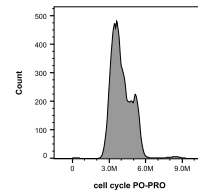
PO-PRO test DU145 Simona ctrl iso.fcs
Compact population
56.3%
13525.0



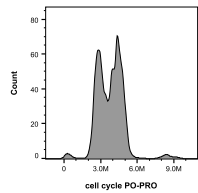
PO-PRO test DU145 Simona ctrl spec.fcs
Compact population
54.8%
16448.0



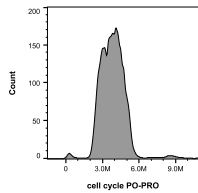
PO-PRO test DU145 Simona min iso.fcs
Compact population
61.2%
11239.0



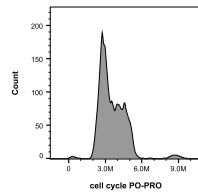
PO-PRO test DU145 Simona min spec.fcs
Compact population
61.0%
18299.0



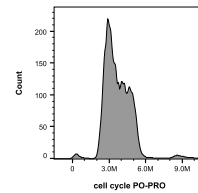
PO-PRO test DU145 helena ctrl iso.fcs
Compact population
57.1%
3250.0



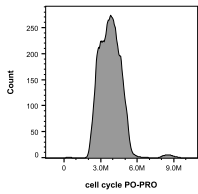
PO-PRO test DU145 helena ctrl spec.fcs
Compact population
45.1%
8950.0



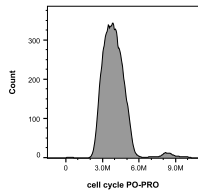
PO-PRO test DU145 helena min iso.fcs
Compact population
59.6%
6774.0



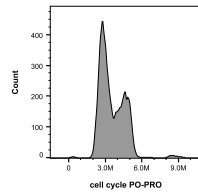
PO-PRO test DU145 helena min spec.fcs
Compact population
41.8%
9235.0



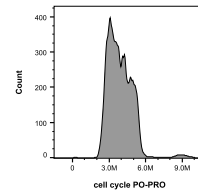
PO-PRO test DU145 miriam ctrl iso.fcs
Compact population
54.4%
13489.0



PO-PRO test DU145 miriam ctrl spec.fcs
Compact population
54.0%
16195.0



PO-PRO test DU145 miriam min iso.fcs
Compact population
56.5%
15696.0



PO-PRO test DU145 miriam min spec.fcs
Compact population
62.4%
18719.0