

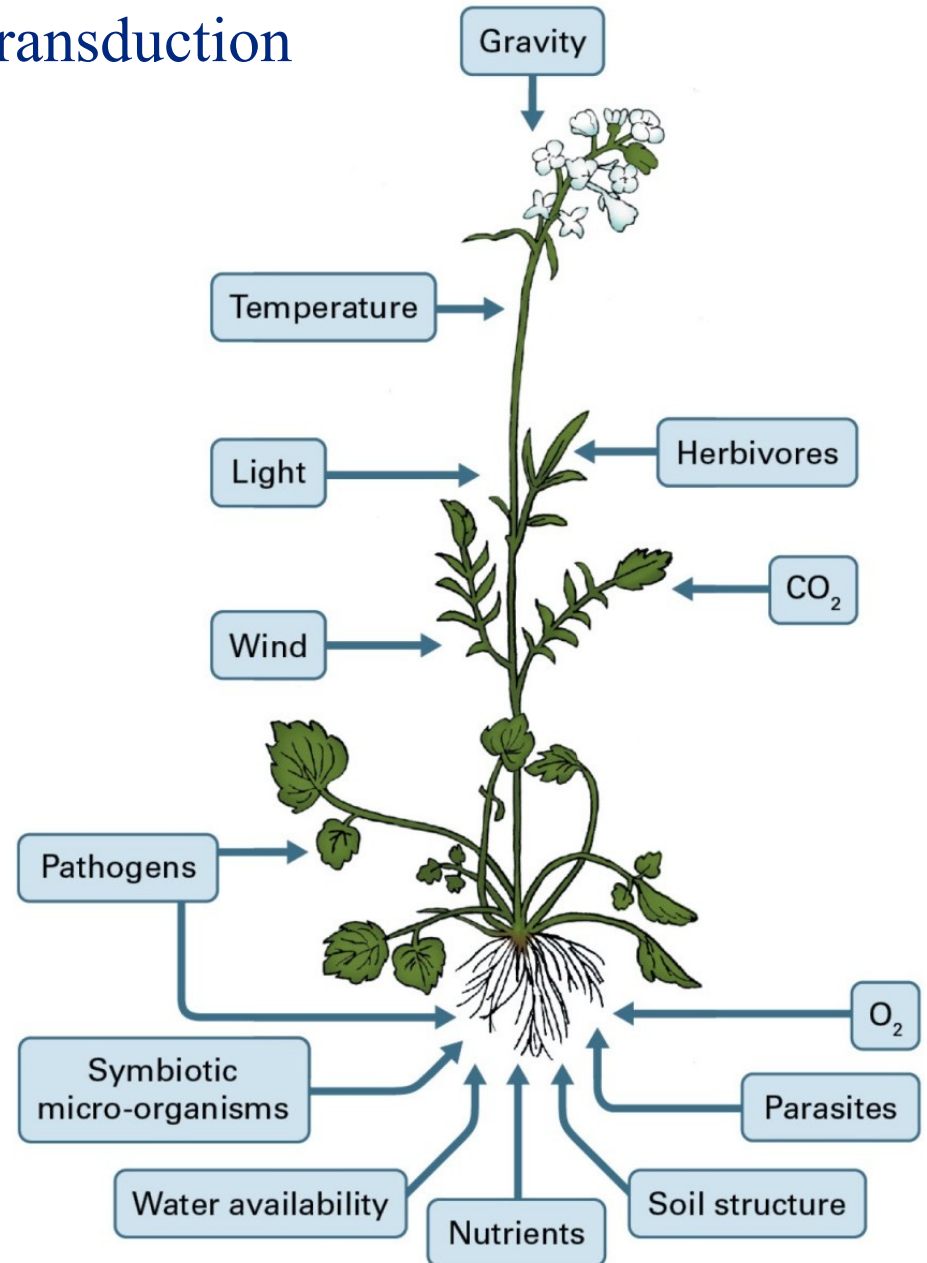
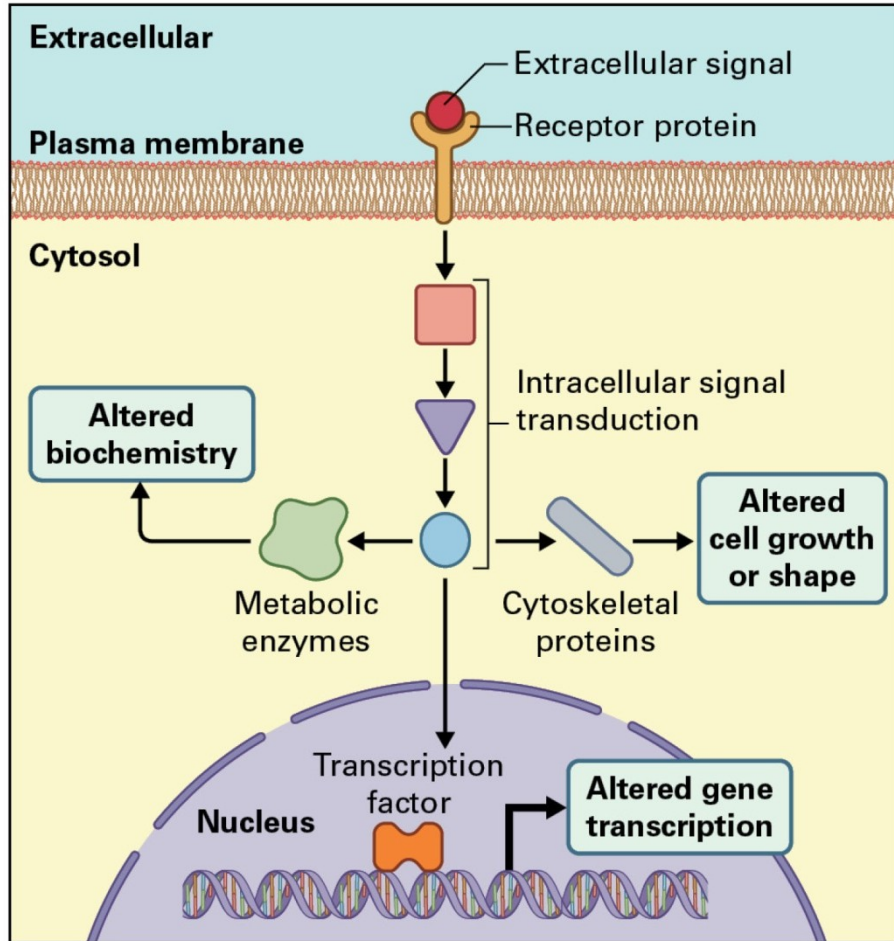


FACULTY
OF SCIENCE
Masaryk University

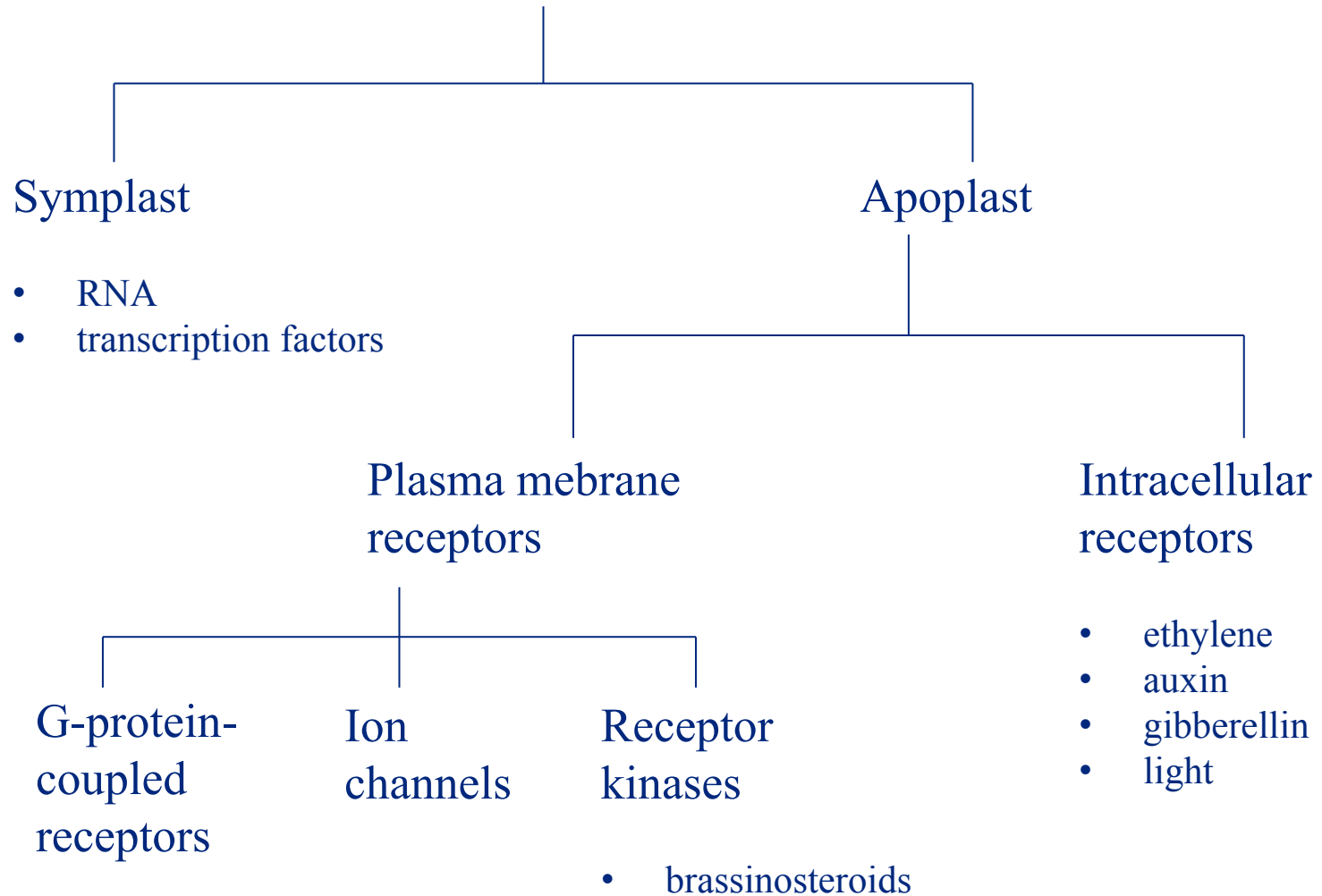
Hormones and Signal Transduction



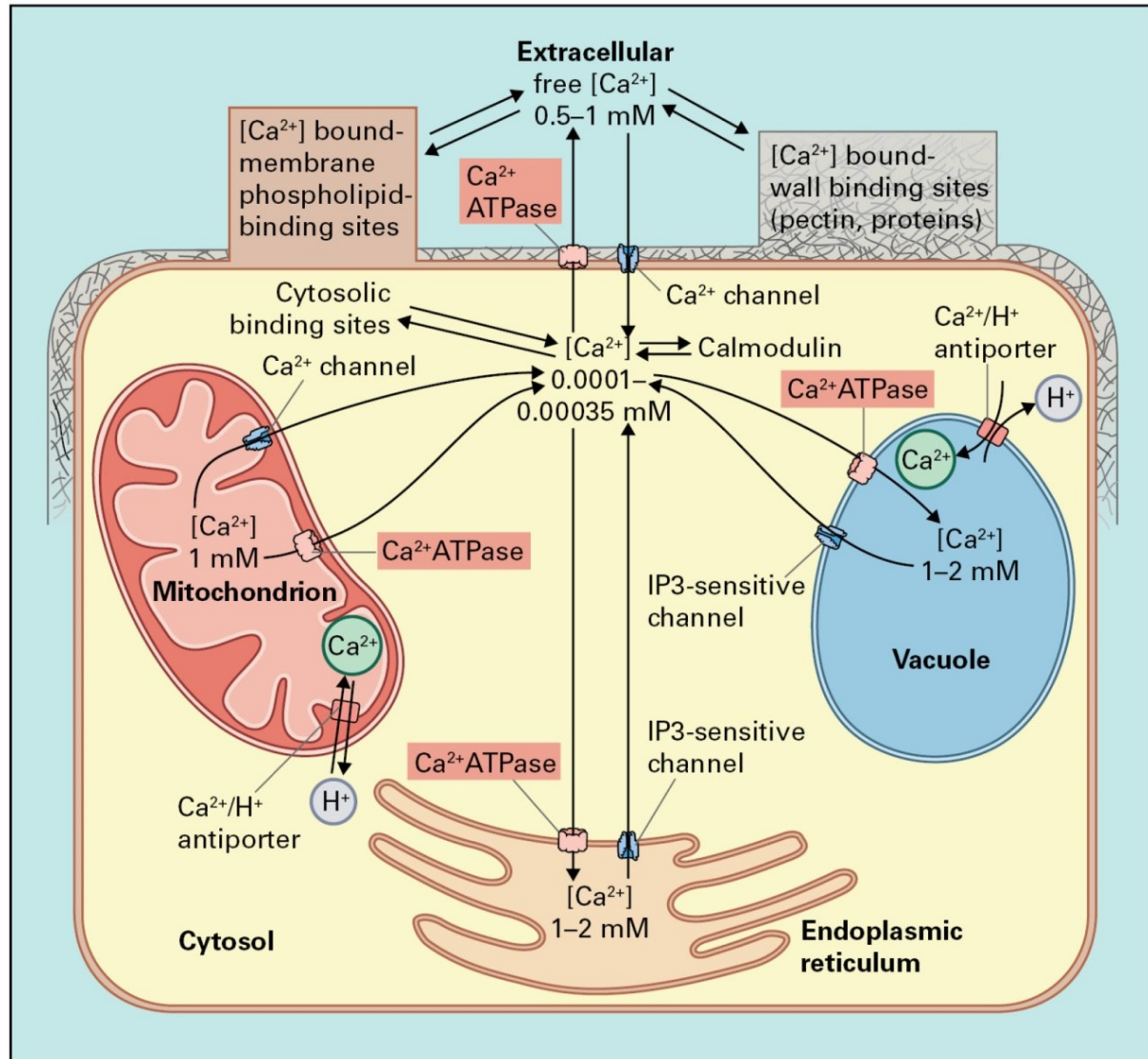
Signal transduction



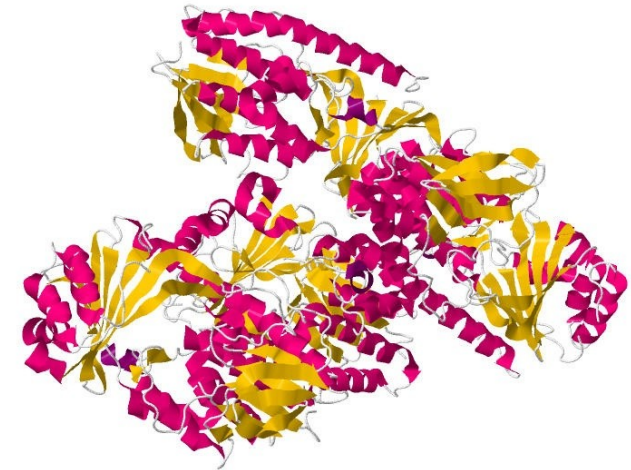
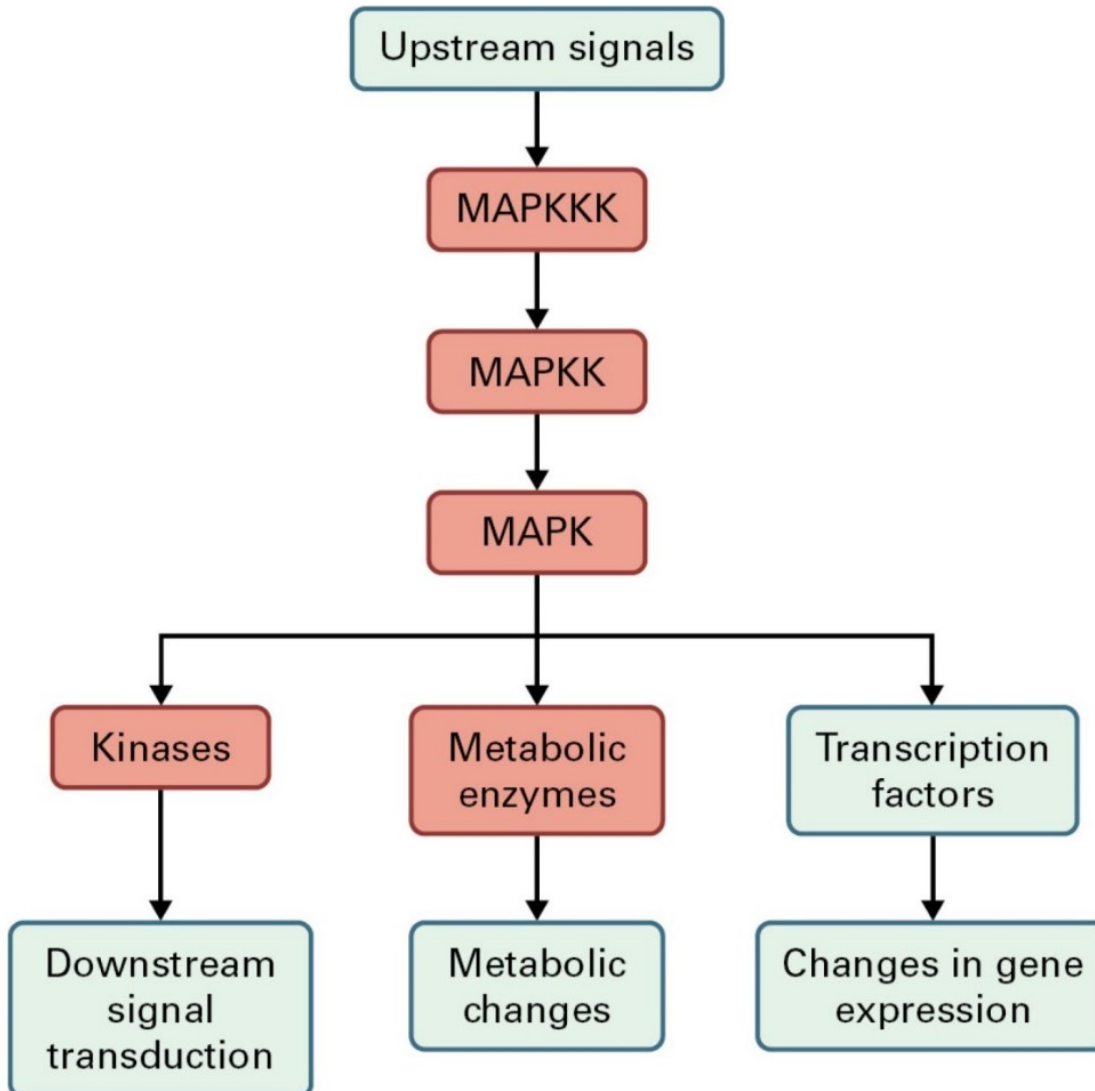
Signal perception



Second messengers



MAPK cascades and Phytohormones

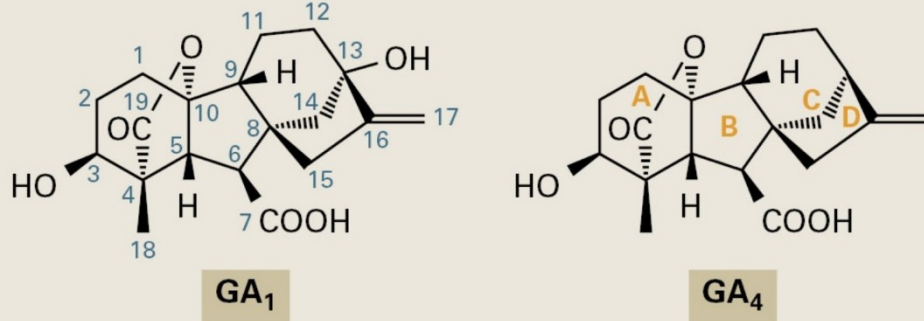


Monooxygenase

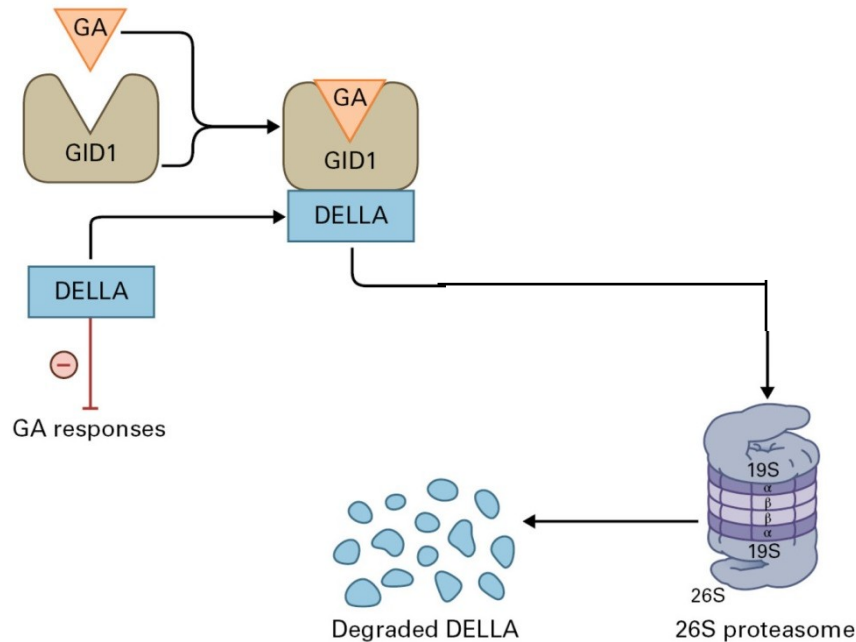
By Jmol Development
Team/Briana Miller - Jmol,
GPL,

<https://commons.wikimedia.org/w/index.php?curid=15026248>

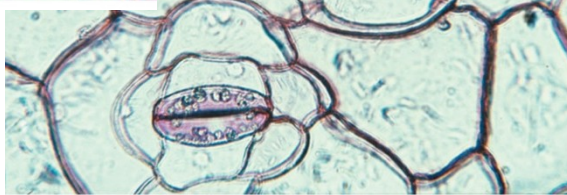
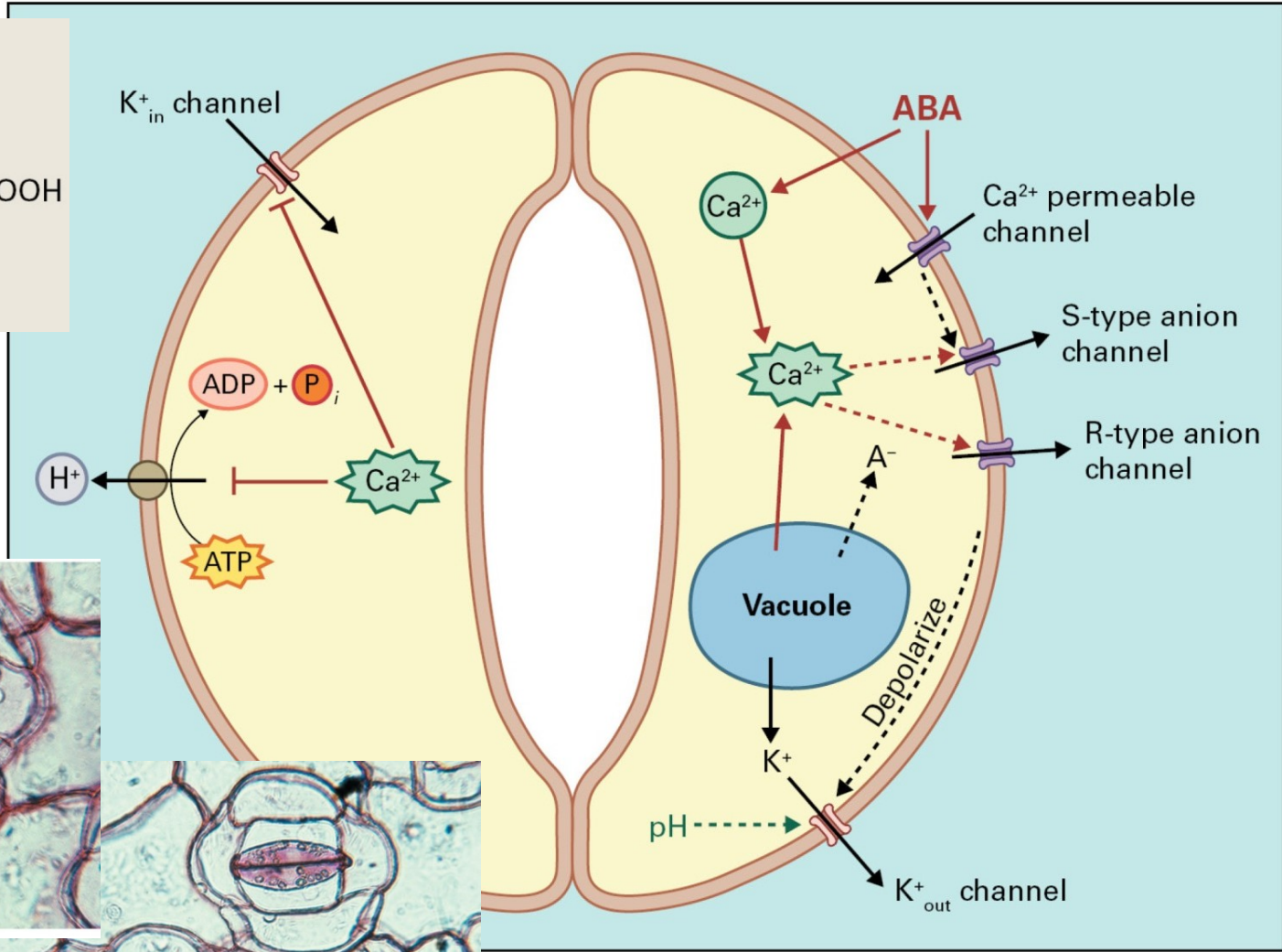
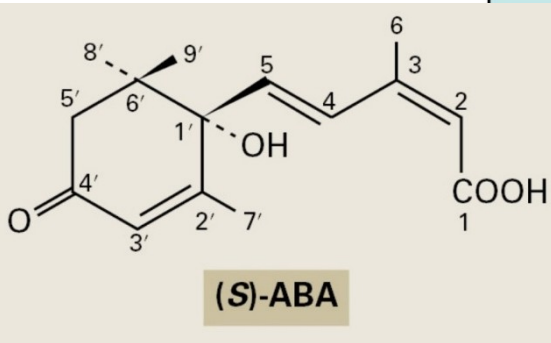
Gibberellins



Effect of GA₃ on stem elongation.
 left: control plant
 right: plant 7 days after treatment with GA₃

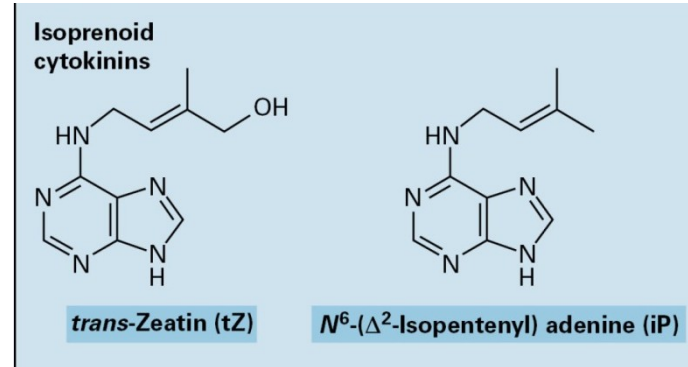
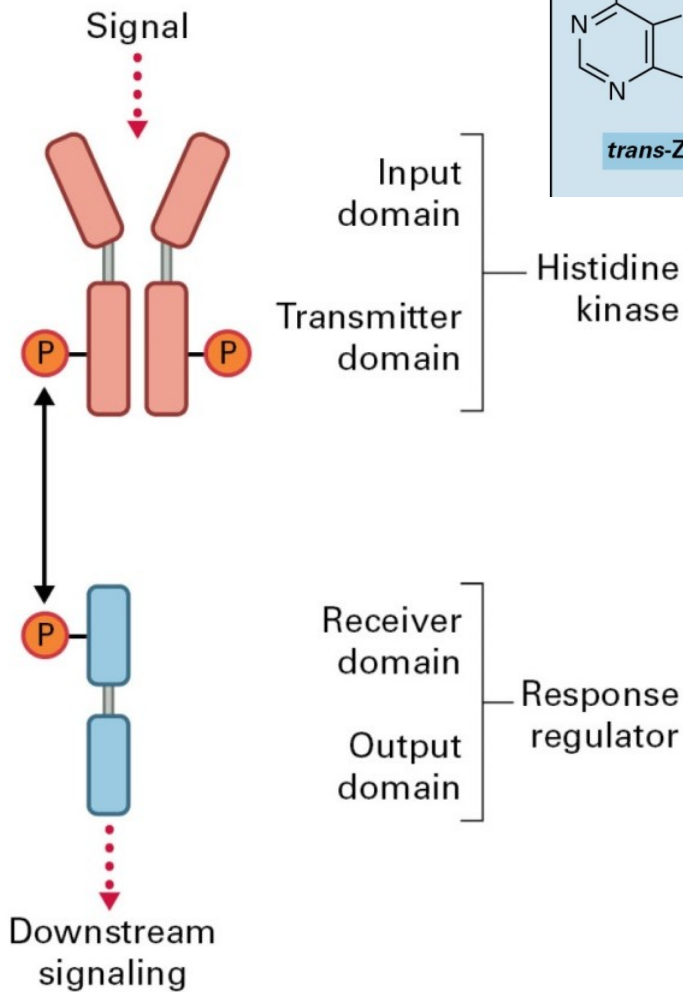


Abscisic acid



Cytokinins

The two-component system



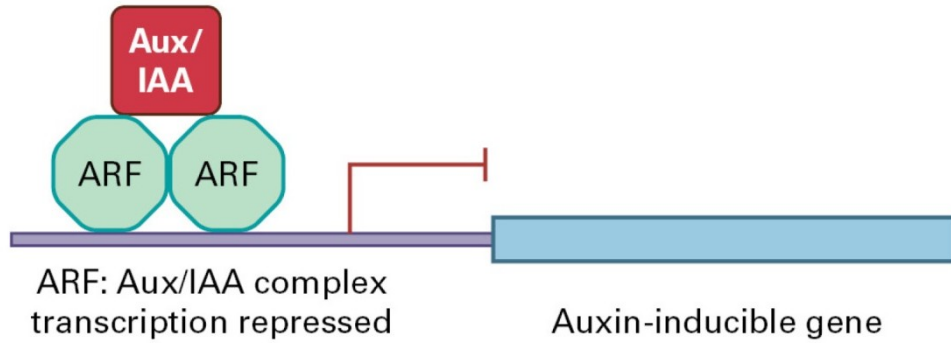
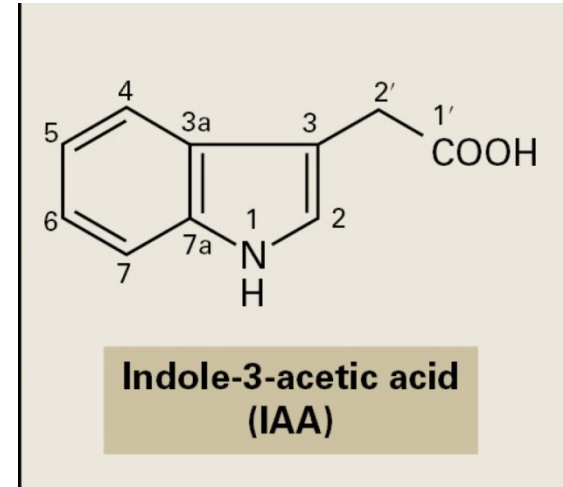
A



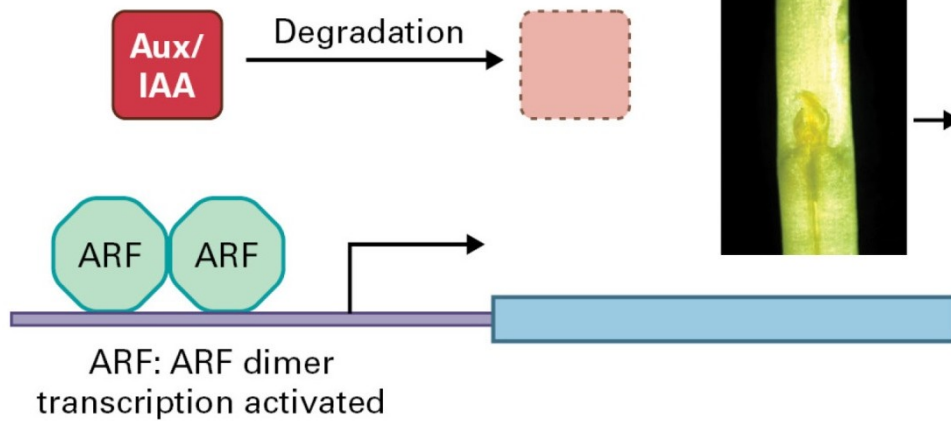
B

Transgenic plants *AtCKX* have lower CK content compared to wild-type.

Auxin

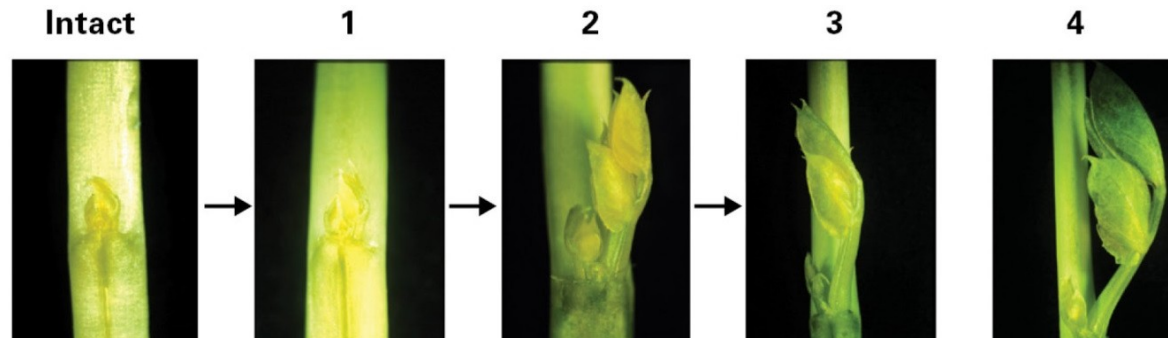


A Low auxin

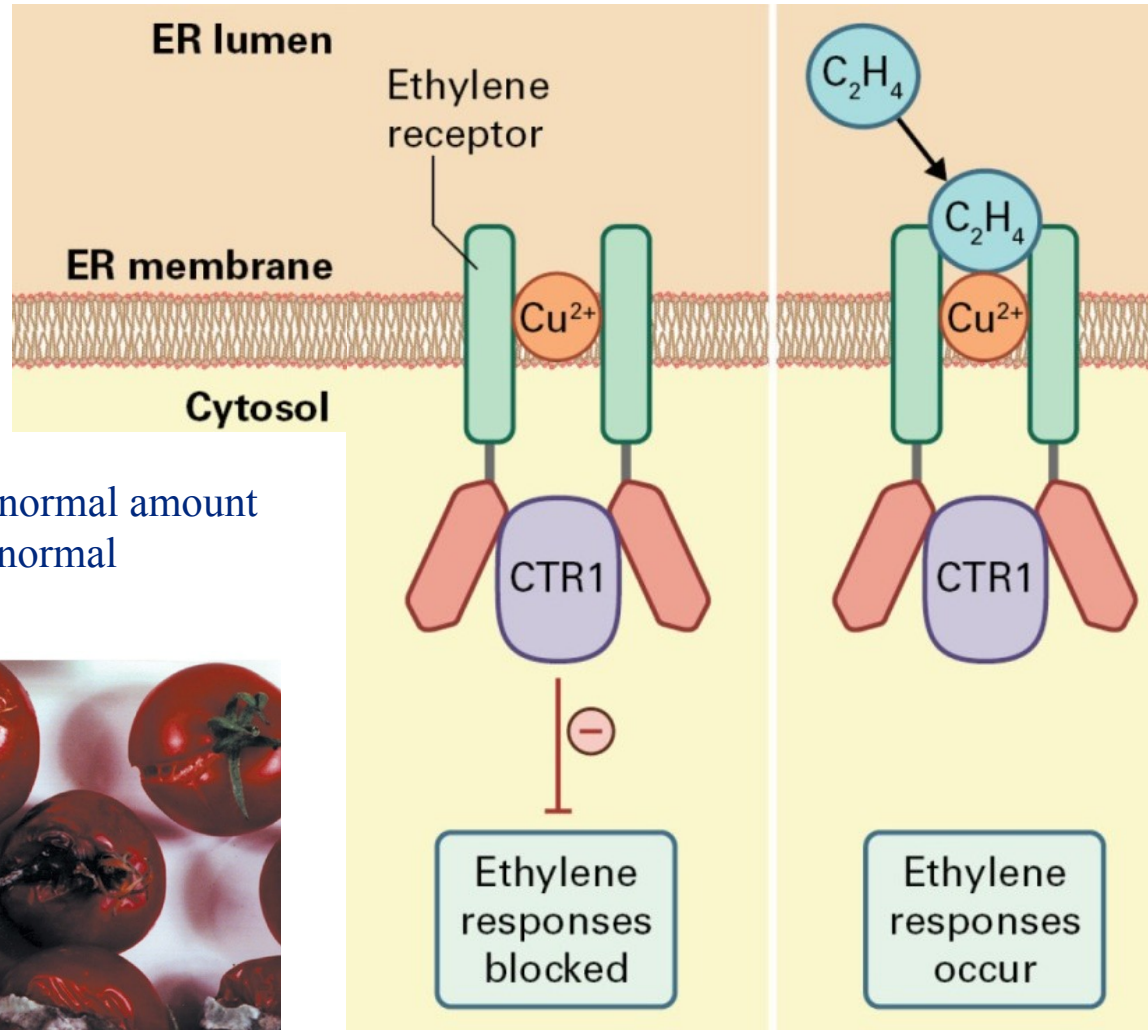
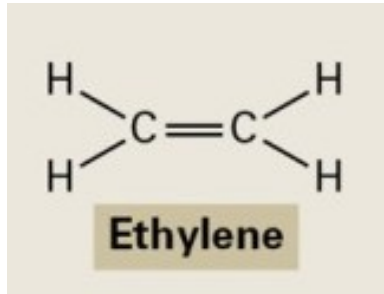


B High auxin

Days after decapitation



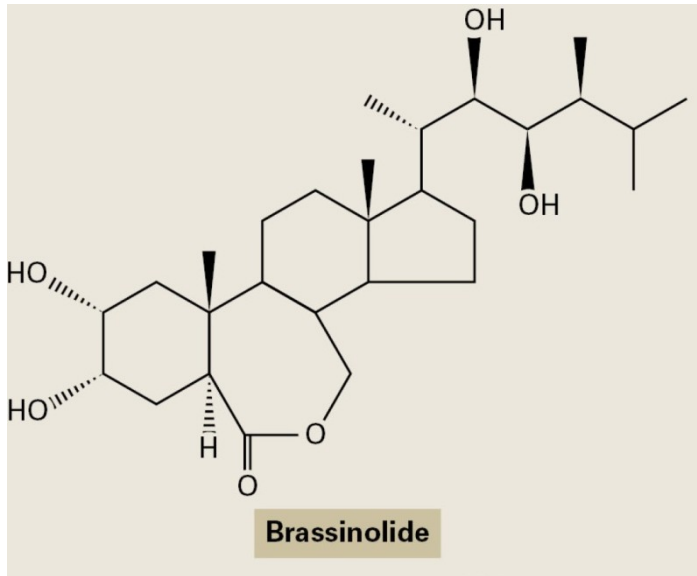
Ethylene



Left: Fruits, which generate about 5 % of normal amount of ethylene. Right: Fruits, which produce normal amounts of ethylene.



Brassinosteroids

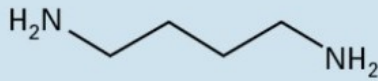


Wild-type and BL-deficient Arabidopsis plant

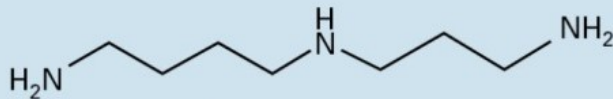


Polyamines

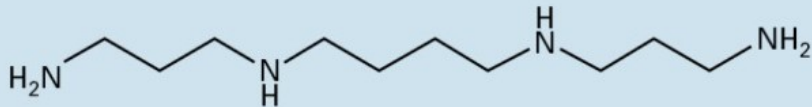
Common polyamines



Putrescine

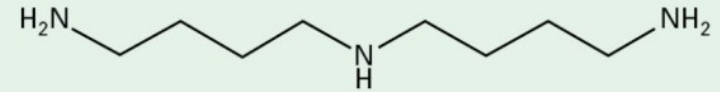


Spermidine

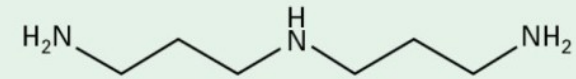


Spermine

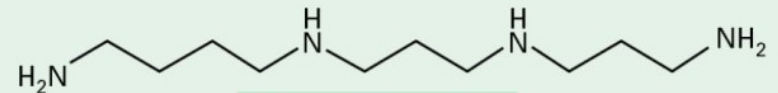
Uncommon polyamines



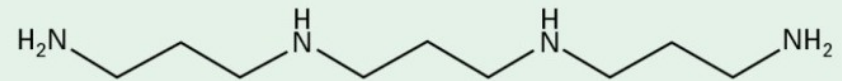
Homospermidine



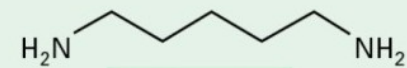
Norspermidine



Thermospermine

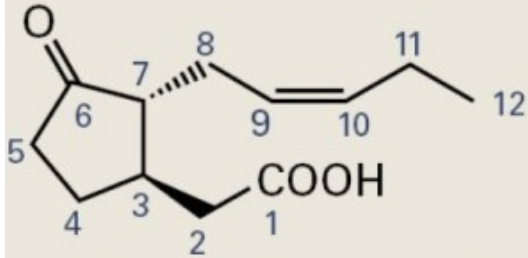


Homospermine

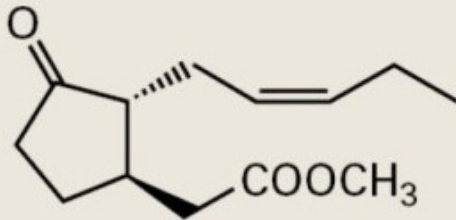


Cadaverine

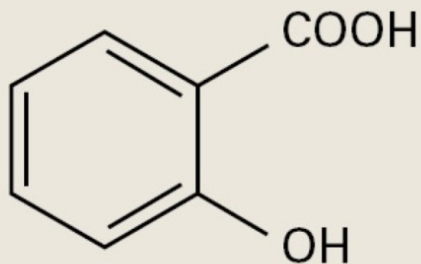
Jasmonic acid and Salicylic acid



(-)-Jasmonic acid



Methyl (-)-jasmonate

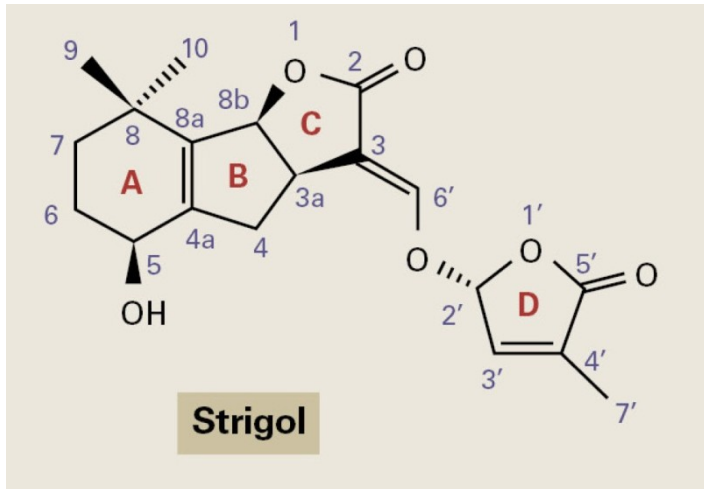


Salicylic acid



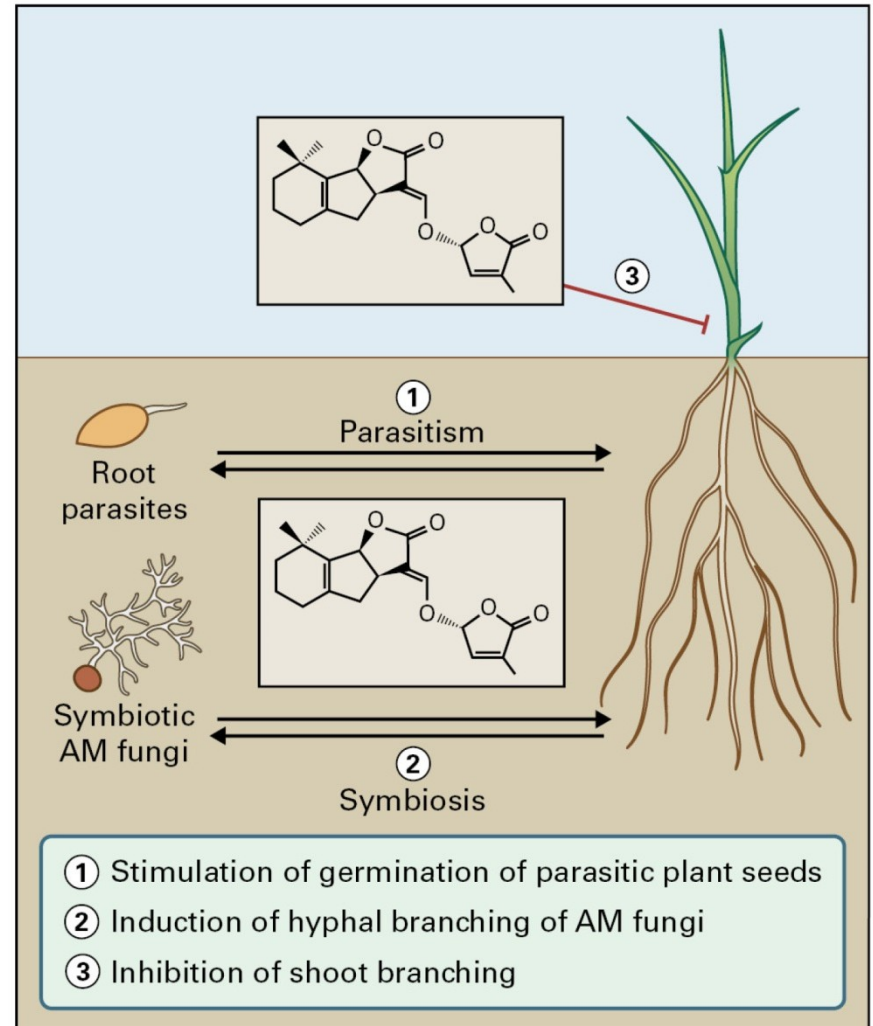
Necrotic lesions on the leaf of tobacco

Strigolactones



-

+GR24



Plant photoreceptors

