

CG920 Genomics

Lesson 5

Gene Expression and Chemical Genetics

Jan Hejátko

Functional Genomics and Proteomics of Plants,
Mendel Centre for Plant Genomics and Proteomics,
Central European Institute of Technology (CEITEC), Masaryk University, Brno
hejatko@sci.muni.cz, www.ceitec.muni.cz



INVESTICE DO ROZVOJE VZDĚLÁVÁNÍ

Tato prezentace je spolufinancována
Evropským sociálním fondem
a státním rozpočtem České republiky

Literature

- Literature sources for Chapter 05:

- Surpin, M. and Raikhel, N. (2004) Traffic jams affect plant development and signal transduction. *Nature Reviews/Molecular Cell Biology* 5,100-109
- Zouhar, J., Hicks, G.R. and Raikhel, N.V. (2004) Sorting inhibitors (Sortins): Chemical compounds to study vacuolar sorting in Arabidopsis. *Proceedings of the National Academy of Sciences of the U.S.A.*, 101, 9497–9501
- Nevo-Dinur, K., Nussbaum-Shochat, A., Ben-Yehuda, S., and Amster-Choder, O. (2011). Translation-independent localization of mRNA in *E. coli*. *Science* 331, 1081-1084.
- Lecuyer, E., Yoshida, H., Parthasarathy, N., Alm, C., Babak, T., Cerovina, T., Hughes, T.R., Tomancak, P., and Krause, H.M. (2007). Global analysis of mRNA localization reveals a prominent role in organizing cellular architecture and function. *Cell* 131, 174-187.
- Schonberger, J., Hammes, U.Z., and Dresselhaus, T. (2012). In vivo visualization of RNA in plants cells using the lambdaN(22) system and a GATEWAY-compatible vector series for candidate RNAs. *The Plant journal : for cell and molecular biology* 71, 173-181.



INVESTICE DO ROZVOJE VZDĚLÁVÁNÍ

Tato prezentace je spolufinancována
Evropským sociálním fondem
a státním rozpočtem České republiky

Outline

- **Methods of gene expression analysis**
 - **Qualitative analysis of gene expression**
 - Preparation of **transcriptional fusion** of **promoter** of analysed gene with a **reporter gene**
 - Preparation of **translational fusion** of the **coding region** of the analysed gene with **reporter gene**
 - Use of the data available in **public databases**
 - **Tissue- and cell-specific** gene expression analysis
 - **Quantitative analysis of gene expression**
 - **DNA and protein chips**
 - **Next generation transcriptional profiling**
- **Regulation of gene expression in the identification of gene function by gain-of-function approaches**
 - **T-DNA activation mutagenesis**
 - **Ectopic expression and regulated gene expression systems**
- **Chemical Genetics**



Tato prezentace je spolufinancována
Evropským sociálním fondem
a státním rozpočtem České republiky

Outline

- **Methods of gene expression analysis**
 - **Qualitative analysis of gene expression**
 - Preparation of **transcriptional fusion of promoter** of analysed gene with a **reporter gene**

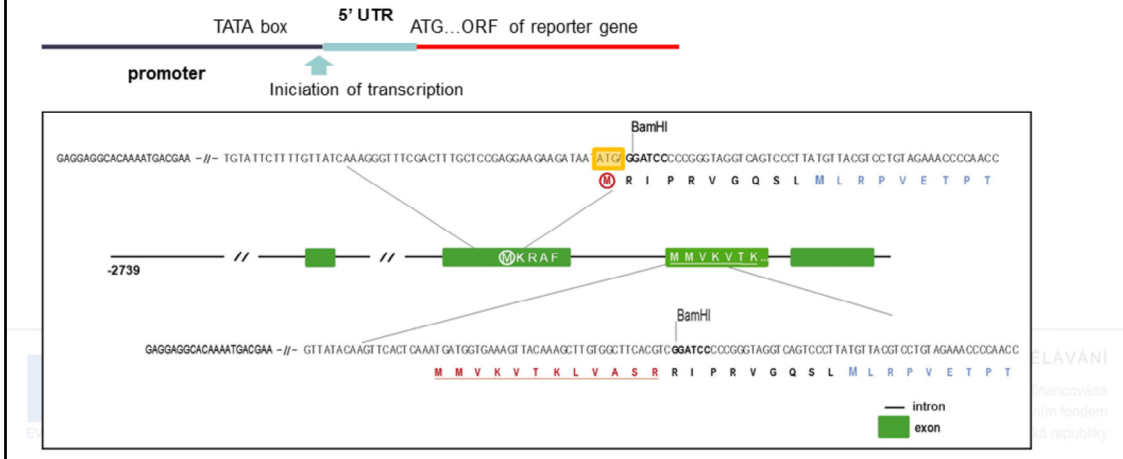


INVESTICE DO ROZVOJE VZDĚLÁVÁNÍ

Tato prezentace je spolufinancována
Evropským sociálním fondem
a státním rozpočtem České republiky

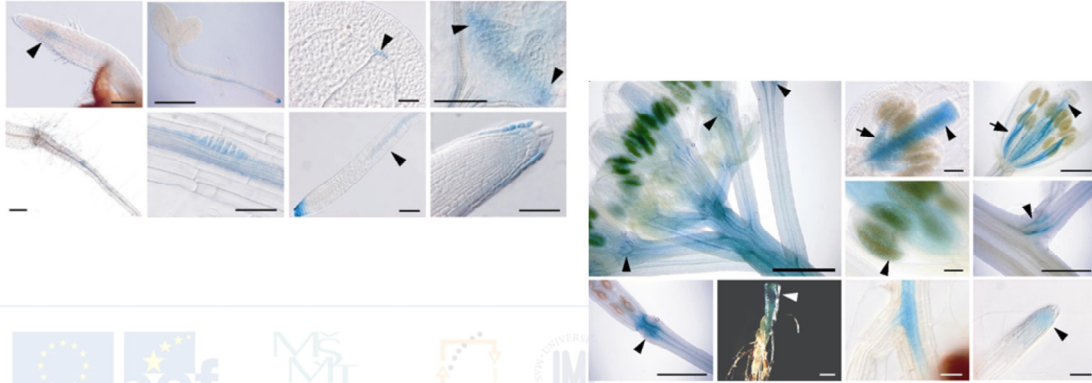
Transcriptional Fusion

- Identification and cloning of the promoter region of the gene
- Preparation of recombinant DNA carrying the promoter and the reporter gene (*uidA*, GFP)



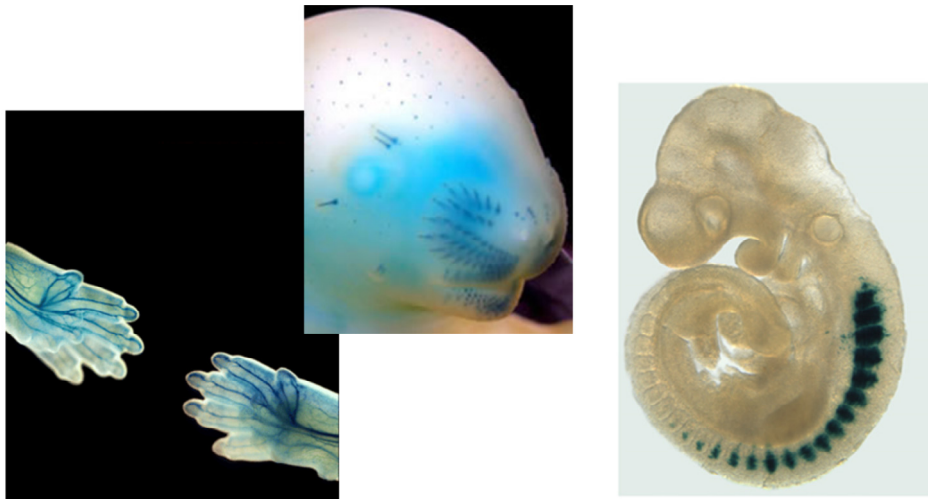
Transcriptional Fusion

- Identification and cloning of the promoter region of the gene
- Preparation of recombinant DNA carrying the promoter and the reporter gene (uidA, GFP)
- Preparation of transgenic organisms carrying this recombinant DNA and their histological analysis



Evropským sociálním fondem
a státním rozpočtem České republiky

GUS Reporter in Mouse Embryos



ZDĚLÁVÁNÍ

Tato prezentace je spolufinancována
Evropským sociálním fondem
a státním rozpočtem České republiky

Outline

- Methods of gene expression analysis
 - Qualitative analysis of gene expression
 - Preparation of transcriptional fusion of promoter of analysed gene with a reporter gene
 - Preparation of translational fusion of the coding region of the analysed gene with reporter gene

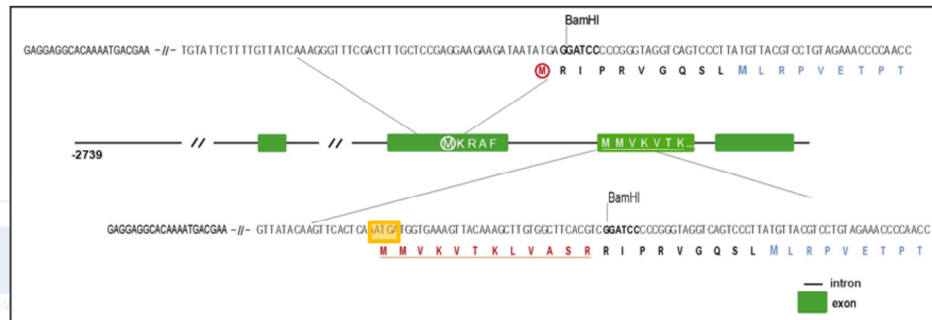
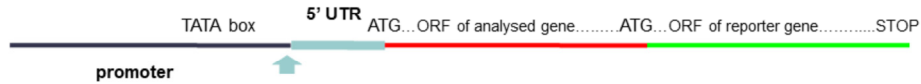


INVESTICE DO ROZVOJE VZDĚLÁVÁNÍ

Tato prezentace je spolufinancována
Evropským sociálním fondem
a státním rozpočtem České republiky

Translational Fusion

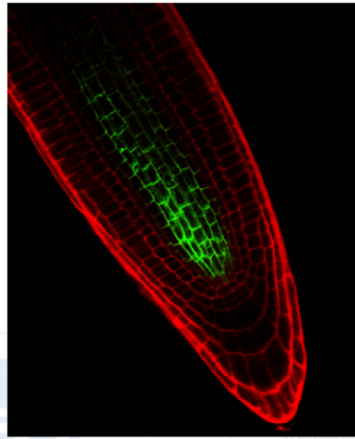
- Identification and cloning of the promoter and coding region of the analyzed gene
- Preparation of a recombinant DNA carrying the promoter and the coding sequence of the studied gene in a fusion with the reporter gene (uidA, GFP)



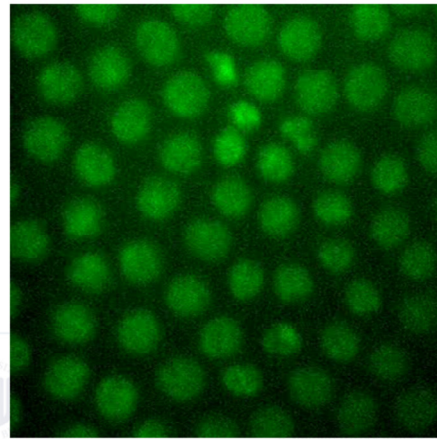
EVZDĚLÁVÁNÍ
je spolufinancováno
z evropského sociálního fondu
Evropské unie a státním rozpočtem
České republiky

Translational Fusion

- Preparation of transgenic organisms carrying the recombinant DNA and their histological analysis
- Compared to transcriptional fusion, translation fusion allows analysis of intercellular localization of gene product (protein) or its dynamics



PIN1-GFP in *Arabidopsis*

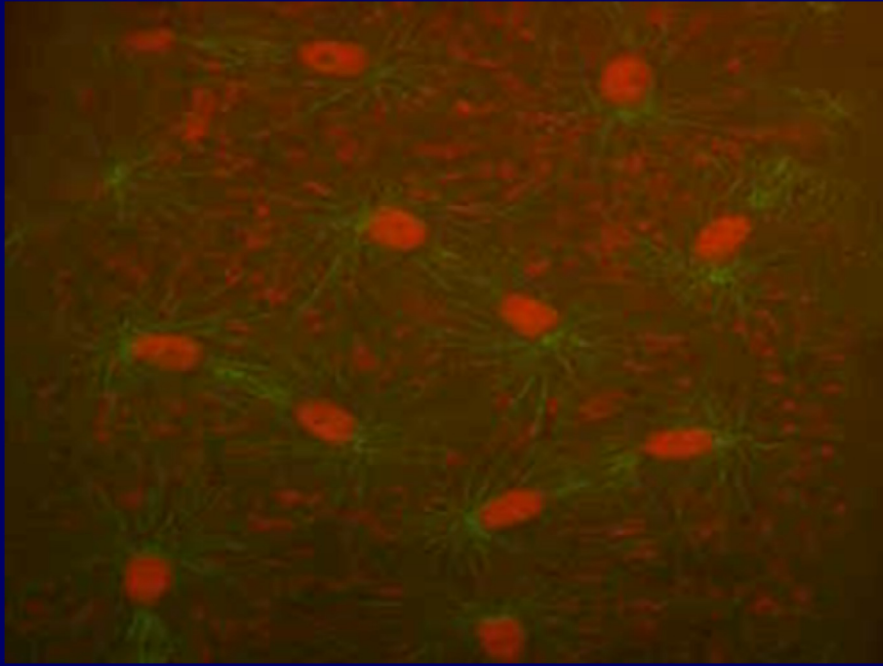


Histone 2A-GFP in *Drosophila* embryo by PAM



VLAVÁNÍ
připravováno
z fondem
Evropské republiky

Translational Fusion



Outline

- Methods of gene expression analysis
 - Qualitative analysis of gene expression
 - Preparation of transcriptional fusion of promoter of analysed gene with a reporter gene
 - Preparation of translational fusion of the coding region of the analysed gene with reporter gene
 - Use of the data available in public databases

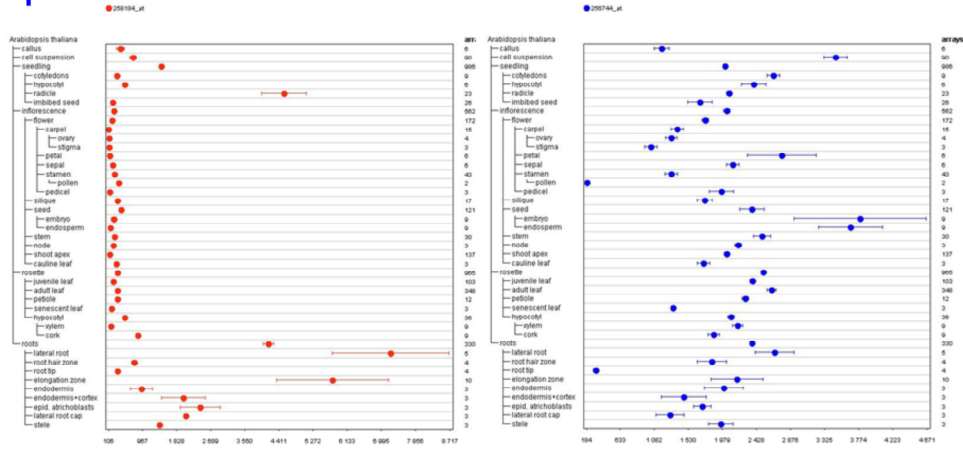


INVESTICE DO ROZVOJE VZDĚLÁVÁNÍ

Tato prezentace je spolufinancována
Evropským sociálním fondem
a státním rozpočtem České republiky

Databases

- Analysis of expression using Genevestigator (**AHP1** and **AHP2**, *Arabidopsis*, Affymetrix ATH 22K Array)

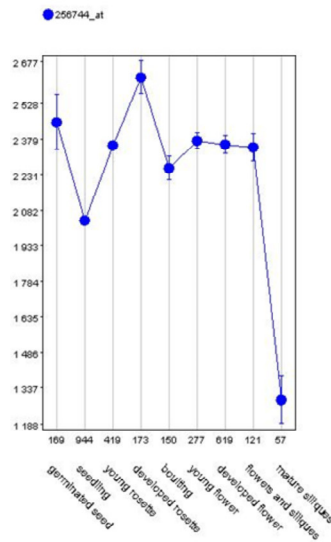
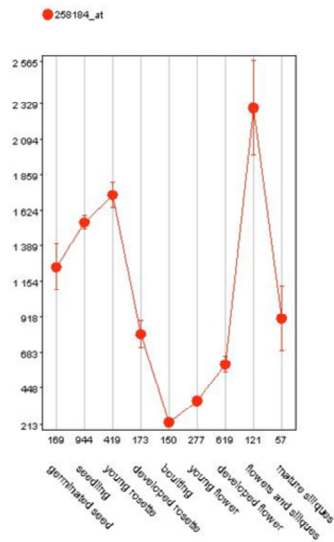


INVESTICE DO ROZVOJE VZDELAVÁNÍ

Tato prezentace je spolufinancována
Evropským sociálním fondem
a státním rozpočtem České republiky

Databases

- Analysis of expression using Genevestigator (*AHP1* and *AHP2*, *Arabidopsis*, Affymetrix ATH 22K Array)



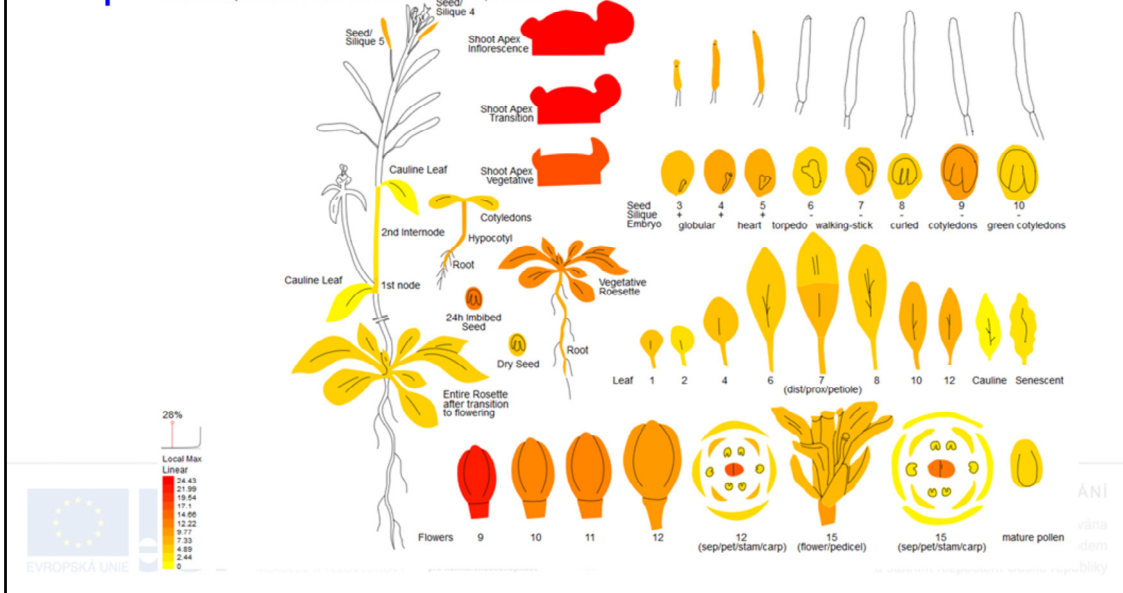
ROZVOJE VZDĚLÁVÁNÍ

o prezentace je spolufinancována
Evropským sociálním fondem
a národním rozpočtem České republiky

Databases

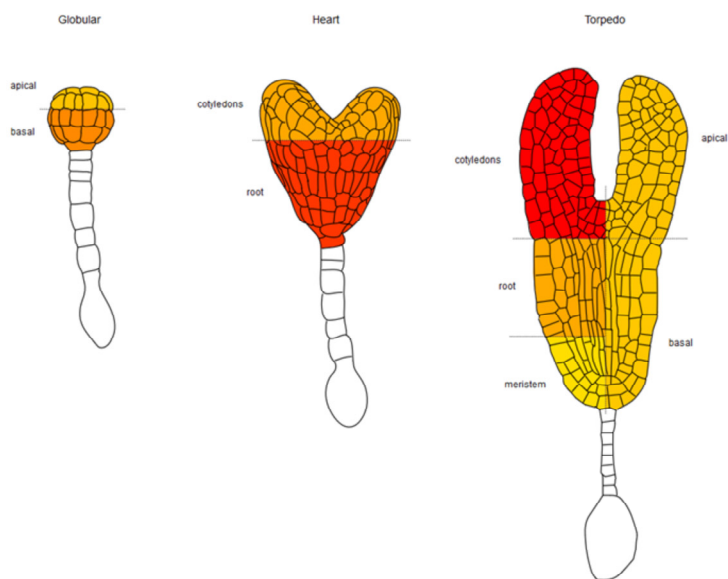
□ Analysis of expression using ePlant

AtGenExpress eFP: AT1G13330 / AHP2, HOP2



Databases

□ Analysis of expression using ePlant



MINISTERSTVO ŠKOLSTVÍ,
MLÁDEŽE A TĚLOVÝCHOVY

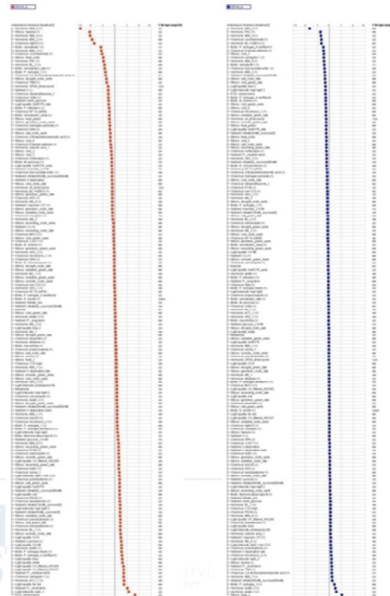
OP Vzdělávání
pro konkurenceschopnost



ZDĚLÁVÁNÍ
podfinancováno
ociálním fondem
a státním rozpočtem České republiky

Databases

- Analysis of expression using Genevestigator (*AHP1* and *AHP2*, *Arabidopsis*, Affymetrix ATH 22K Array)



INVESTICE DO ROZVOJE VZDĚLÁVÁNÍ

Tato prezentace je spolufinancována
Evropským sociálním fondem
a státním rozpočtem České republiky

Outline

- Methods of gene expression analysis
 - Qualitative analysis of gene expression
 - Preparation of transcriptional fusion of promoter of analysed gene with a reporter gene
 - Preparation of translational fusion of the coding region of the analysed gene with reporter gene
 - Use of the data available in public databases
 - Tissue- and cell-specific gene expression analysis

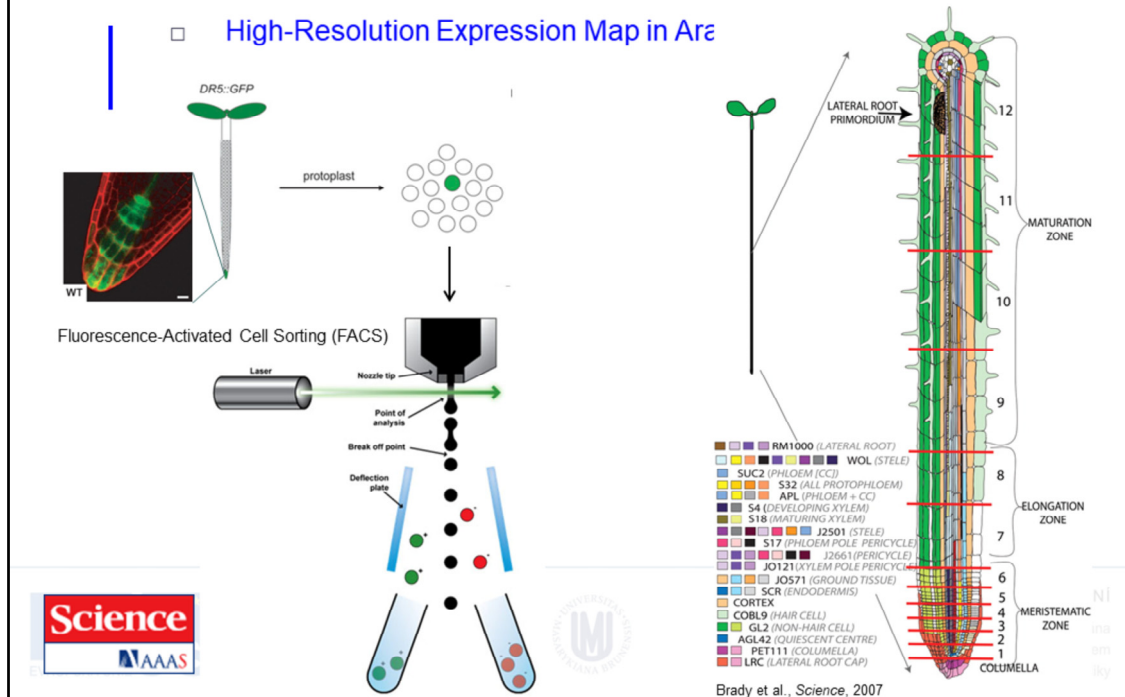


INVESTICE DO ROZVOJE VZDĚLÁVÁNÍ

Tato prezentace je spolufinancována
Evropským sociálním fondem
a státním rozpočtem České republiky

Expression Maps - RNA

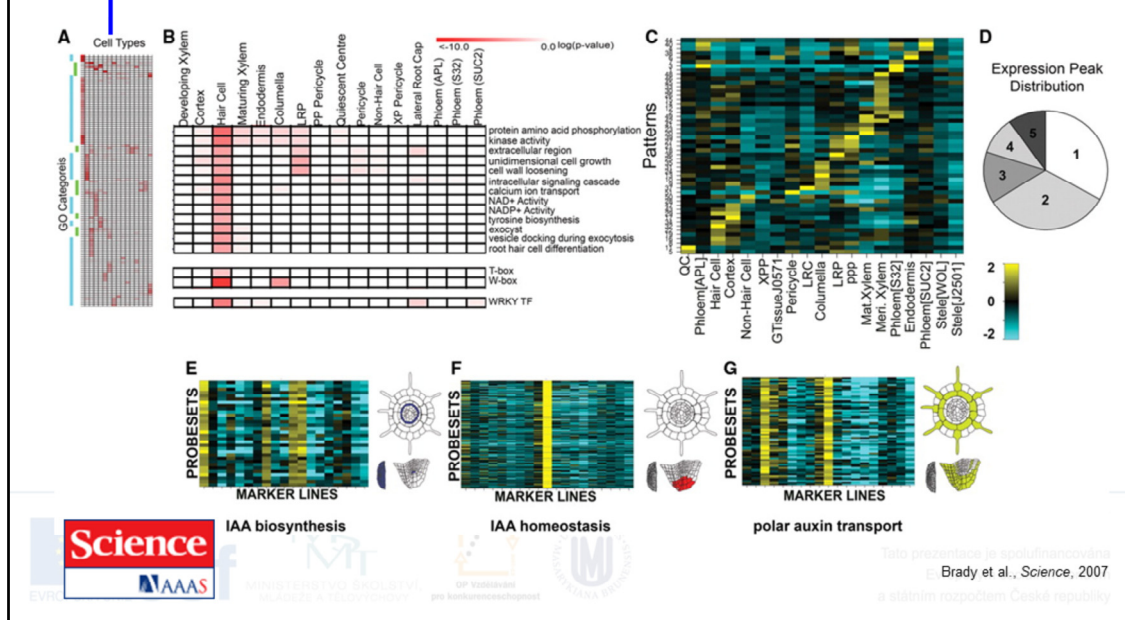
High-Resolution Expression Map in *Arabidopsis*



Microarray expression profiles of 19 fluorescently sorted GFP-marked lines were analyzed (3–9, 23, 24). The colors associated with each marker line reflect the developmental stage and cell types sampled. Thirteen transverse sections were sampled along the root's longitudinal axis (red lines) (10). CC, companion cells.

Expression Maps - RNA

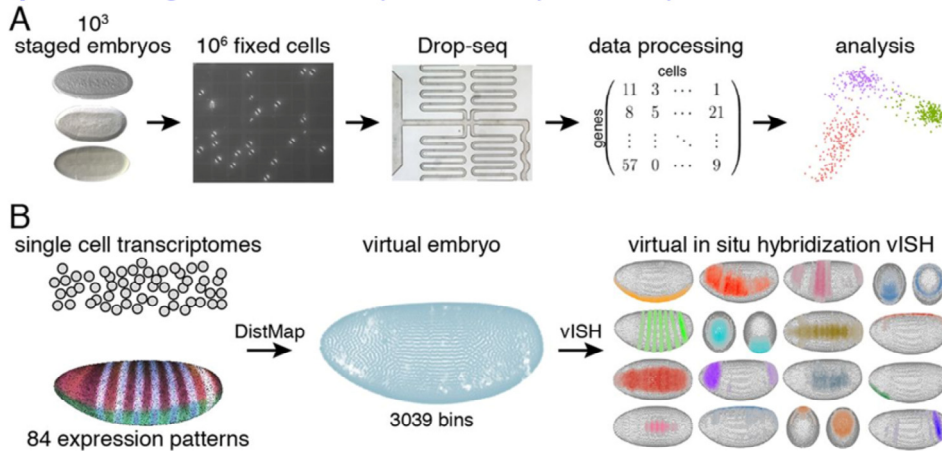
High-Resolution Expression Map in Arabidopsis Root



(A) The majority of enriched GO terms (hierarchically clustered) are associated with individual cell types (blue bar). A smaller number are present across multiple cell types (green bar). (fig. S2) (B) GO category enrichment for hair cells confirms a previous report (15). Enriched cis-elements and an enriched TF family were also identified. (C) From the top 50% of varying probe sets, 51 dominant radial patterns were identified. Pattern expression values were mean-normalized (rows) and \log_2 transformed to yield relative expression indices for each marker line (columns). Marker line order is the same for all figures; see table S1 for marker line abbreviations. (D) Pattern expression peaks were found across one to five cell types. (E to G) Patterns where expression is enriched in single and multiple cell types support transcriptional regulation of auxin flux and synthesis. In all heat maps with probe sets, expression values were mean-normalized and \log_2 transformed. Expression is false-colored in representations of a root transverse section, a cut-away of a root tip, and in a lateral root primordium. (E) Auxin biosynthetic genes (*CYP79B2*, *CYP79B3*, *SUPERROOT1*, and *SUPERROOT2*) are transcriptionally enriched in the QC, lateral root primordia, pericycle, and phloem-pole pericycle ($P = 1.99E^{-11}$, pattern 5). All AGI identifiers and TAIR descriptions are found in table S14. (F) Auxin amido-synthases *GH3.6* and *GH3.17* that play a role in auxin homeostasis show enriched expression in the columella, just below the predicted auxin biosynthetic center of the QC ($P = 8.82E^{-4}$, pattern 13). (G) The expression of the auxin transporter, *PIN-FORMED2*, and auxin transport regulators (*PINOID*, *WAG1*) are enriched in the columella, hair cells, and cortex ($P = 1.03E^{-4}$, pattern 31).

Expression Maps - RNA

I □ High-Resolution Expression Map in Drosophilla



Nikos Karaiskos et al. Science 2017; science.aan3235



INVESTICE DO ROZVOJE VZDĚLÁVÁNÍ

Tato prezentace je spolufinancována
Evropským sociálním fondem
a státním rozpočtem České republiky

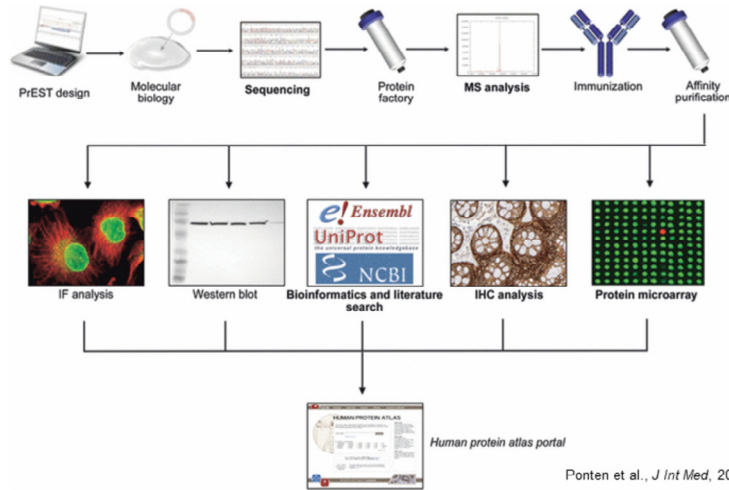
Deconstructing and reconstructing the embryo by single-cell transcriptomics combined with spatial mapping.

(A) Single-cell sequencing of the Drosophila embryo: ~1000 handpicked stage 6 fly embryos are dissociated per Drop-seq replicate, cells are fixed and counted, single cells are combined with barcoded capture beads, and libraries are prepared and sequenced. Finally, single-cell transcriptomes are deconvolved, resulting in a digital gene expression matrix for further analysis.

(B) Mapping cells back to the embryo: Single-cell transcriptomes are correlated with high-resolution gene expression patterns across 84 marker genes, cells are mapped to positions within a virtual embryo, and expression patterns are computed by combining the mapping probabilities with the expression levels (virtual in situ hybridization).

Expression Maps - Proteins

□ Human Protein Atlas



Ponten et al., *J Int Med*, 2011



INVESTICE DO ROZVOJE VZDĚLÁVÁNÍ

Tato prezentace je spolufinancována
Evropským sociálním fondem
a státním rozpočtem České republiky

Schematic flowchart of the Human Protein Atlas. For each gene, a signature sequence (PrEST) is defined from the human genome sequence, and following RT-PCR, cloning and production of recombinant protein fragments, subsequent immunization and affinity purification of antisera results immunospecific antibodies. The produced antibodies are tested and validated in various immunoassays. Approved antibodies are used for protein profiling in cells (immunofluorescence) and tissues (immunohistochemistry) to generate the images and protein expression data that are presented in the Human Protein Atlas (Ponten et al., *J Int Med*, 2011).

Expression Maps - Proteins

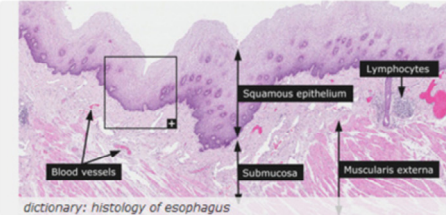
- Human Protein Atlas (<http://www.proteinatlas.org/>)

THE HUMAN PROTEIN ATLAS

ABOUT & HELP

SEARCH ? »

e.g. CD44, ELF3, KLK3, or use Fields to search specific fields such as protein_class:Transcription factors or chromosome:X



News

Protein evidence according to Fagerberg et al is summarized in the chromosome progress diagram.

Version: 11.0
Atlas updated: 2013-03-11
[release history](#)

15156 genes with protein expression profiles based on **18707** antibodies.

dictionary: histology of esophagus



Knut & Alice Wallenberg Stiftelse
The Human Protein Atlas project is funded by the Knut & Alice Wallenberg foundation.

MINISTERSTVO ŠKOLSTVÍ, MLÁDEŽE A TĚLOVÝCHOVY

OP Vzdělávání pro konkurenceschopnost



VOJE VZDĚLÁVÁNÍ

stace je spolufinancována
... opským sociálním fondem
a státním rozpočtem České republiky

Outline

- **Methods of gene expression analysis**
 - **Qualitative analysis of gene expression**
 - Preparation of **transcriptional fusion** of **promoter** of analysed gene with a **reporter gene**
 - Preparation of **translational fusion** of the **coding region** of the analysed gene with **reporter gene**
 - Use of the data available in **public databases**
 - **Tissue- and cell-specific** gene expression analysis
 - **Quantitative analysis of gene expression**
 - **DNA and protein chips**



INVESTICE DO ROZVOJE VZDĚLÁVÁNÍ

Tato prezentace je spolufinancována
Evropským sociálním fondem
a státním rozpočtem České republiky

Outline

- Methods of gene expression analysis
 - Qualitative analysis of gene expression
 - Preparation of transcriptional fusion of promoter of analysed gene with a reporter gene
 - Preparation of translational fusion of the coding region of the analysed gene with reporter gene
 - Use of the data available in public databases
 - Tissue- and cell-specific gene expression analysis
 - Quantitative analysis of gene expression
 - DNA and protein chips



INVESTICE DO ROZVOJE VZDĚLÁVÁNÍ

Tato prezentace je spolufinancována
Evropským sociálním fondem
a státním rozpočtem České republiky

DNA Chips

- Method, which provides quick comparison of a large number of genes/proteins between the test sample and control
- Oligo DNA chips are used the most



- There are commercially available kits for the whole genome
 - company Operon (Qiagen), 29.110 of 70-mer oligonucleotides representing 26.173 genes coding proteins, 28.964 transcripts and 87 microRNA genes of *Arabidopsis thaliana*
 - Possibility of use for the preparation of photolithography chips – facilitation of oligonucleotide synthesis e.g. for the whole human genome (about $3,1 \times 10^9$ bp) it is possible to prepare 25-mers in only 100 steps, by this technique



- Chips not only for the analysis of gene expression, but also for e.g. Genotyping (SNPs, sequencing with chips, ...)

Affymetrix ATH1 *Arabidopsis* genome array

| Critical Specifications | |
|--------------------------------|---|
| Number of arrays | One |
| Number of sequence represented | >24,000 gene sequences |
| Feature size | 18 μm |
| Oligonucleotide probe length | 25-mer |
| Probe pairs/sequence | 11 |
| Control sequences | <i>E. coli</i> genes <i>bioB</i> , <i>bioC</i> , <i>bioD</i> , <i>B. subtilis</i> gene <i>lysA</i> , Phage P1 <i>cm</i> gene, <i>Arabidopsis</i> maintenance genes GAPDH, Ubiquitin, and Actin |
| Detection sensitivity | 1:100,000* |

*As measured by detection in comparative analysis between a complex target containing spiked control transcriptions and a complex target with no spikes.



DNA Chips

- For the **correct interpretation** of the results, good knowledge of **advanced statistical methods** is required
- It is necessary to include a **sufficient number of controls** and **repeats**

- Control of accuracy of the measurement (repeated measurements on several chips with the same sample, comparing the same samples analysed on different chips with each other)
- Control of reproducibility of measurements (repeated measurements with different samples isolated under the same conditions on the same chip – comparing with each other)
- Identification of reliable measurement threshold
- Finally comparing the experiment with the control or comparing different conditions with each other -> the result

Expression of 195M677 in response to chemical treatment

Home | About TAIR | Sitemap | Contact | Help | Order | Login

Search | Tools | Arabidopsis Info | News | Links | FTP | Stocks

Gene

Experiment: Aluminum Stress

Experiment Summary | Samples | Slides & Datasets | Array Design | View All

| Slide (name & description) | External ID | Replicate (id & name) | Replicate type | Reverse replicate | Sample | Experimental variables | Label | Get Data |
|---|-------------|-----------------------|----------------|-------------------|-------------------|--|-------|----------|
| Hoekengas7 [1] Aluminum Stress 1 (strong spatial bias) | AFGC 7304 | 63: Aluminum Stress | technical | | 7304_Cy3.7305_Cy5 | no treatment pool of 3, 8, and 24 hours | Cy3 | Download |
| | | | | | 7304_Cy5.7305_Cy3 | Aluminum (50 μM AlCl ₃) pool of 3, 8, and 24 hours | Cy5 | |
| Hoekengas5 Aluminum Stress 2 (strong spatial bias) | AFGC 7305 | 64: Aluminum Stress | technical | 63 | 7304_Cy5.7305_Cy3 | Aluminum (50 μM AlCl ₃) pool of 3, 8, and 24 hours | Cy3 | Download |
| | | | | | 7304_Cy3.7305_Cy5 | no treatment pool of 3, 8, and 24 hours | Cy5 | |

- Currently there's been a great number of results of various experiments in publicly accessible databases

DO ROZVOJE Che et al., 2002

Tato prezentace je spolufinancována
Evropským sociálním fondem
a státním rozpočtem České republiky



Protein Chips

- Protein chips
 - Chips with **high density containing** 10^4 proteins
 - Analysis of **protein-protein interactions, kinase substrates and interactions with small molecules**
 - Possibility of using **antibodies** – more **stable** than proteins



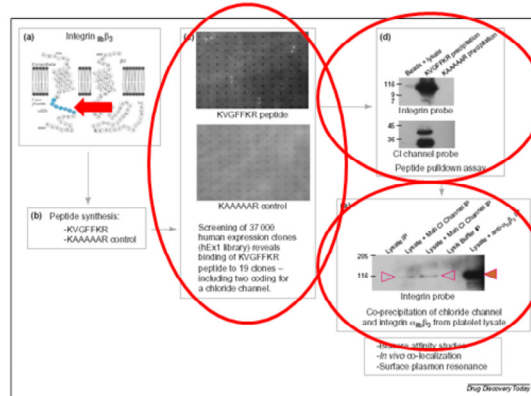
INVESTICE DO ROZVOJE VZDĚLÁVÁNÍ

Tato prezentace je spolufinancována
Evropským sociálním fondem
a státním rozpočtem České republiky

Protein Chips

- Identification of proteins interacting with integrin $\alpha_{IIb}\beta_3$ cytoplasmic domain of platelets

- Expression of cytoplasmic part as a fusion peptide biotin-KVGFFKR
- Analysis of binding to the protein chip containing 37.000 clones of *E. coli* expressing human recombinant proteins
- Confirmation of interaction by pull-down analysis of peptides and by coprecipitation of whole proteins as well (e.g. chloride channel Icn)
- Other use: e.g. in the identification of kinase substrates, when substrates are bound to the chip and exposed to kinases in the presence of radiolabeled ATP (786 purified proteins of barely, of which 21 were identified as CK2 α kinase substrates; Kramer et al., 2004)



Lueking et al., 2005



INVESTICE DO ROZVOJE VZDĚLÁVÁNÍ

Tato prezentace je spolufinancována
Evropským sociálním fondem
a státním rozpočtem České republiky

Outline

- **Methods of gene expression analysis**
 - **Qualitative analysis of gene expression**
 - Preparation of **transcriptional fusion** of **promoter** of analysed gene with a **reporter gene**
 - Preparation of **translational fusion** of the **coding region** of the analysed gene with **reporter gene**
 - Use of the data available in **public databases**
 - **Tissue- and cell-specific** gene expression analysis
 - **Quantitative analysis of gene expression**
 - **DNA and protein chips**
 - **Next generation transcriptional profiling**

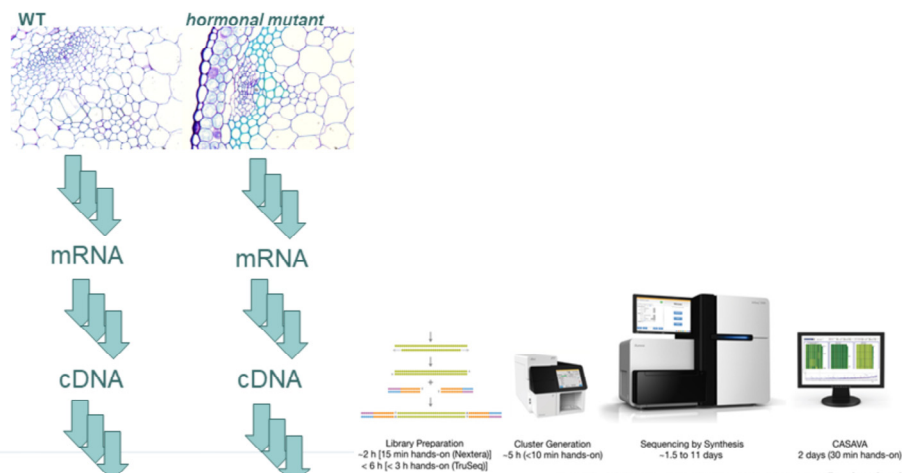


INVESTICE DO ROZVOJE VZDĚLÁVÁNÍ

Tato prezentace je spolufinancována
Evropským sociálním fondem
a státním rozpočtem České republiky

Next Gen Transcriptional Profiling

- **Transcriptional profiling** via **RNA sequencing**



Sequencing by Illumina and
number of transcripts determination



EVROPSKA UNIE
Mládež a tělovýchova
OP Vzdělávání pro konkurenceschopnost



INVESTICE DO ROZVOJE VZDĚLÁVÁNÍ

Tato prezentace je spolufinancována
Evropským sociálním fondem
a státním rozpočtem České republiky

Results of –omics Studies vs Biologically Relevant Conclusions

- Transcriptional profiling yielded more than **7K differentially regulated genes**...

Ddili et al., unpublished

| gene | locus | sample_1 | sample_2 | status | value_1 | value_2 | log2(fold_change) | test_stat | p_value | q_value | significant |
|-----------|---------------------|----------|----------|--------|------------|----------------------|-------------------|---------------------|-------------|-------------|-------------|
| AT1G07795 | 1:2414285-2414967 | WT | MT | OK | 0 | 1.18041.79769e+308 | | 1.73769e+308 | 6.88885e-05 | 0.00039180 | yes |
| HRS1 | 1:4566891-4568708 | WT | MT | OK | 0 | 0.6966831.79769e+308 | | 1.73769e+308 | 6.61994e-06 | 4.67708e-05 | yes |
| ATMLO14 | 1:9227472-9232296 | WT | MT | OK | 0 | 0.5148091.79769e+308 | | 1.73769e+308 | 9.74219e-05 | 0.00053505 | yes |
| NRT1.6 | 1:9400883-9403789 | WT | MT | OK | 0 | 0.8778861.79769e+308 | | 1.73769e+308 | 3.2892e-08 | 3.50131e-07 | yes |
| AT1G27070 | 1:9075425-9082370 | WT | MT | OK | 0 | 2.06291.79769e+308 | | 1.73769e+308 | 9.70039e-00 | 0.047e-05 | yes |
| AT1G60095 | 1:22159735-22102419 | WT | MT | OK | 0 | 0.6885881.79769e+308 | | 1.73769e+308 | 9.95901e-08 | 9.84982e-07 | yes |
| AT1G93020 | 1:696200-998515 | WT | MT | OK | 0 | 1.788591.79769e+308 | | 1.73769e+308 | 0.00913915 | 0.0277958 | yes |
| AT1G13609 | 1:4062720-4063471 | WT | MT | OK | 0 | 3.556141.79769e+308 | | 1.73769e+308 | 0.00021683 | 0.00108079 | yes |
| AT1G21550 | 1:7553100-7553876 | WT | MT | OK | 0 | 0.5829881.79769e+308 | | 1.73769e+308 | 0.00115582 | 0.00471497 | yes |
| AT1G22120 | 1:7808308-7809632 | WT | MT | OK | 0 | 0.6173541.79769e+308 | | 1.73769e+308 | 2.48392e-06 | 1.91089e-05 | yes |
| AT1G31370 | 1:11238297-11239393 | WT | MT | OK | 0 | 1.462541.79769e+308 | | 1.73769e+308 | 4.83523e-05 | 0.00028514 | yes |
| APUM10 | 1:13253387-13255570 | WT | MT | OK | 0 | 0.5810311.79769e+308 | | 1.73769e+308 | 7.87855e-06 | 5.46803e-05 | yes |
| AT1G48700 | 1:18010728-18012871 | WT | MT | OK | 0 | 0.5565251.79769e+308 | | 1.73769e+308 | 6.53917e-05 | 0.00037473 | yes |
| AT1G59077 | 1:21748208-21833195 | WT | MT | OK | 0 | 138.8881.79769e+308 | | 1.73769e+308 | 0.00122789 | 0.00498810 | yes |
| AT1G60050 | 1:22121549-22123702 | WT | MT | OK | 0 | 0.3700871.79769e+308 | | 1.73769e+308 | 0.00117953 | 0.00480001 | yes |
| AT4G15242 | 4:8705786-8706997 | WT | MT | OK | 0.00930712 | 17.9056 | 10.9098 | -4.405231.05673e-05 | 7.13983e-05 | yes | |
| AT5G33251 | 5:12496071-12500433 | WT | MT | OK | 0.0496375 | 52.2837 | 10.0349 | -9.8119 | 0 | 0 yes | |
| AT4G12820 | 4:7421055-7421738 | WT | MT | OK | 0.0195111 | 16.6516 | 8.88812 | -8.900439.80217e-05 | 0.000528904 | yes | |
| AT1G60020 | 1:22100851-22105276 | WT | MT | OK | 0.0116377 | 7.16623 | 9.24811 | -7.503628.19504e-14 | 1.4088e-12 | yes | |
| AT5G15380 | 5:4987235-4989182 | WT | MT | OK | 0.0986273 | 56.4834 | 9.1587 | -10.4392 | 0 | 0 yes | |

Example of an output of transcriptional profiling study using Illumina sequencing performed in our lab. Shown is just a tiny fragment of the complete list, comprising about 7K genes revealing differential expression in the studied mutant.

Outline

- **Methods of gene expression analysis**
 - **Qualitative analysis of gene expression**
 - Preparation of **transcriptional fusion** of **promoter** of analysed gene with a **reporter gene**
 - Preparation of **translational fusion** of the **coding region** of the analysed gene with **reporter gene**
 - Use of the data available in **public databases**
 - **Tissue- and cell-specific** gene expression analysis
 - **Quantitative analysis of gene expression**
 - **DNA and protein chips**
 - **Next generation transcriptional profiling**
- **Regulation of gene expression in the identification of gene function by gain-of-function approaches**
 - **T-DNA activation mutagenesis**



INVESTICE DO ROZVOJE VZDĚLÁVÁNÍ

Tato prezentace je spolufinancována
Evropským sociálním fondem
a státním rozpočtem České republiky

Gain-of-Function Approaches

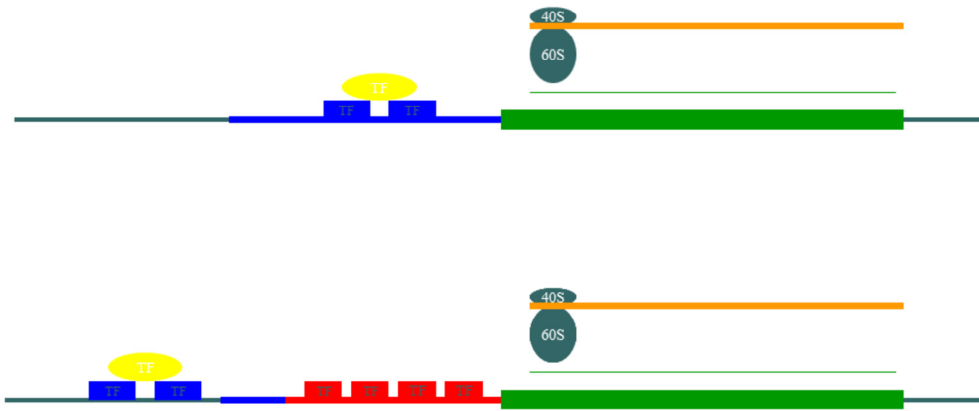
- Methods for identification of gene function using gain-of-function approaches
 - T-DNA activation mutagenesis
 - Method enabling isolation of dominant mutants by random insertion of constitutive promoter, resulting in overexpression of the gene and therefore in corresponding phenotypic changes
 - First step: preparation of mutant library prepared by transformation of a strong constitutive promoter or enhancer
 - Next step: search of interesting phenotypes
 - Identification of the affected gene, e.g. by plasmid-rescue



INVESTICE DO ROZVOJE VZDĚLÁVÁNÍ

Tato prezentace je spolufinancována
Evropským sociálním fondem
a státním rozpočtem České republiky

Activation Mutagenesis

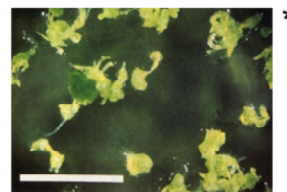


INVESTICE DO ROZVOJE VZDĚLÁVÁNÍ

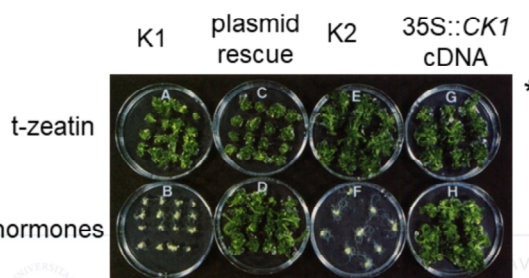
Tato prezentace je spolufinancována
Evropským sociálním fondem
a státním rozpočtem České republiky

Isolation of *CK1* Gene

- Tatsuo Kakimoto, *Science* 274 (1996), 982-985 *
- Isolation of the gene using activation mutagenesis



- Mutant phenotype is a phenocopy of exogenous application of cytokinins (*CK1*, CYTOKININ INDEPENDENT 1)



Tato prezentace je spolufinancována
Evropským sociálním fondem
a státním rozpočtem České republiky

Outline

- **Methods of gene expression analysis**
 - **Qualitative analysis of gene expression**
 - Preparation of **transcriptional fusion** of **promoter** of analysed gene with a **reporter gene**
 - Preparation of **translational fusion** of the **coding region** of the analysed gene with **reporter gene**
 - Use of the data available in **public databases**
 - **Tissue- and cell-specific** gene expression analysis
 - **Quantitative analysis of gene expression**
 - **DNA and protein chips**
 - **Next generation transcriptional profiling**
- **Regulation of gene expression in the identification of gene function by gain-of-function approaches**
 - **T-DNA activation mutagenesis**
 - **Ectopic expression and regulated gene expression systems**



EVROPSKA UNIE



MINISTERSTVO ŠKOLSTVÍ, MLÁDEŽE A TĚLOVÝCHOVY



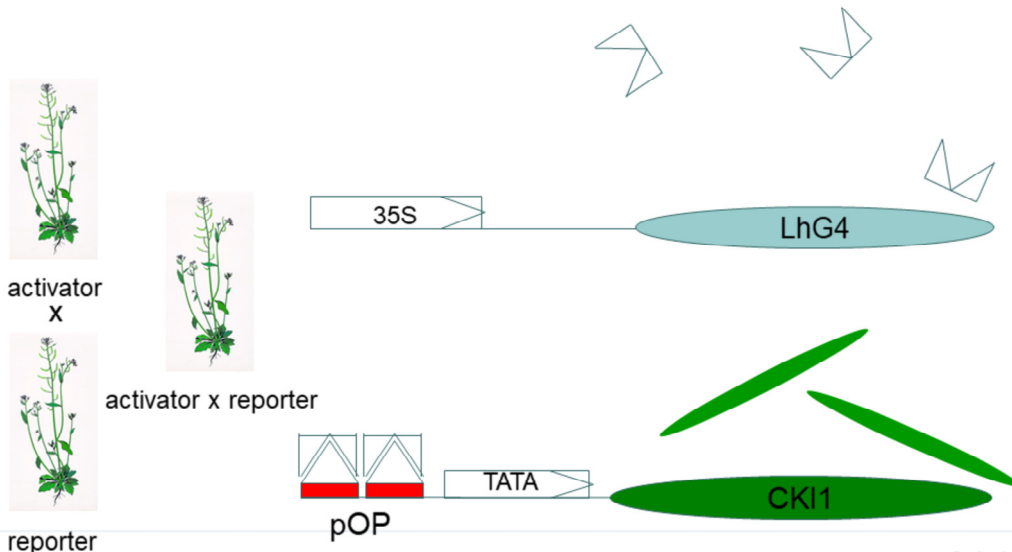
OP Vzdělávání pro konkurenceschopnost



UNIVERSITY OF JYVÄSKYLÄ

Tato prezentace je spolufinancována
Evropským sociálním fondem
a státním rozpočtem České republiky

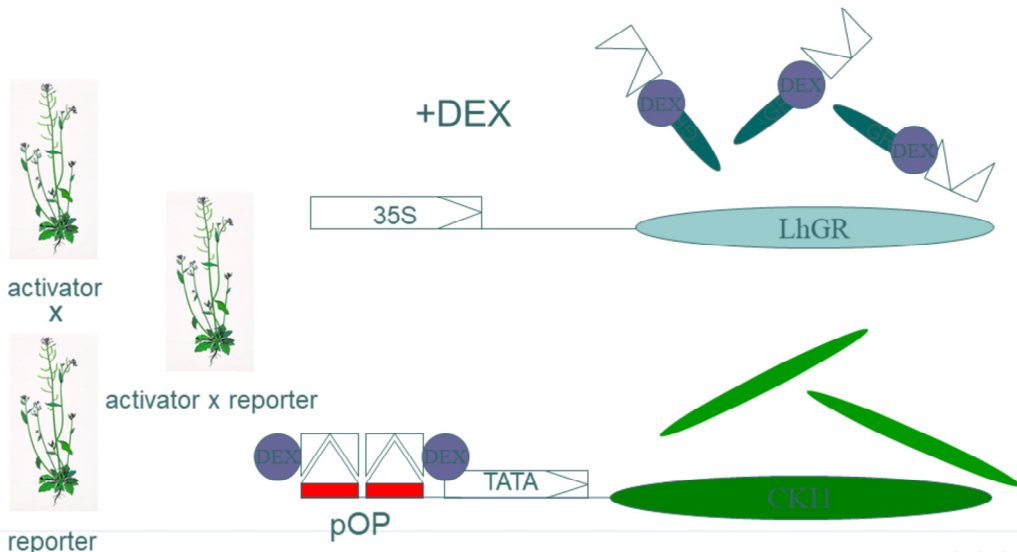
Regulated Expression Systems



INVESTICE DO ROZVOJE VZDĚLÁVÁNÍ

Tato prezentace je spolufinancována
Evropským sociálním fondem
a státním rozpočtem České republiky

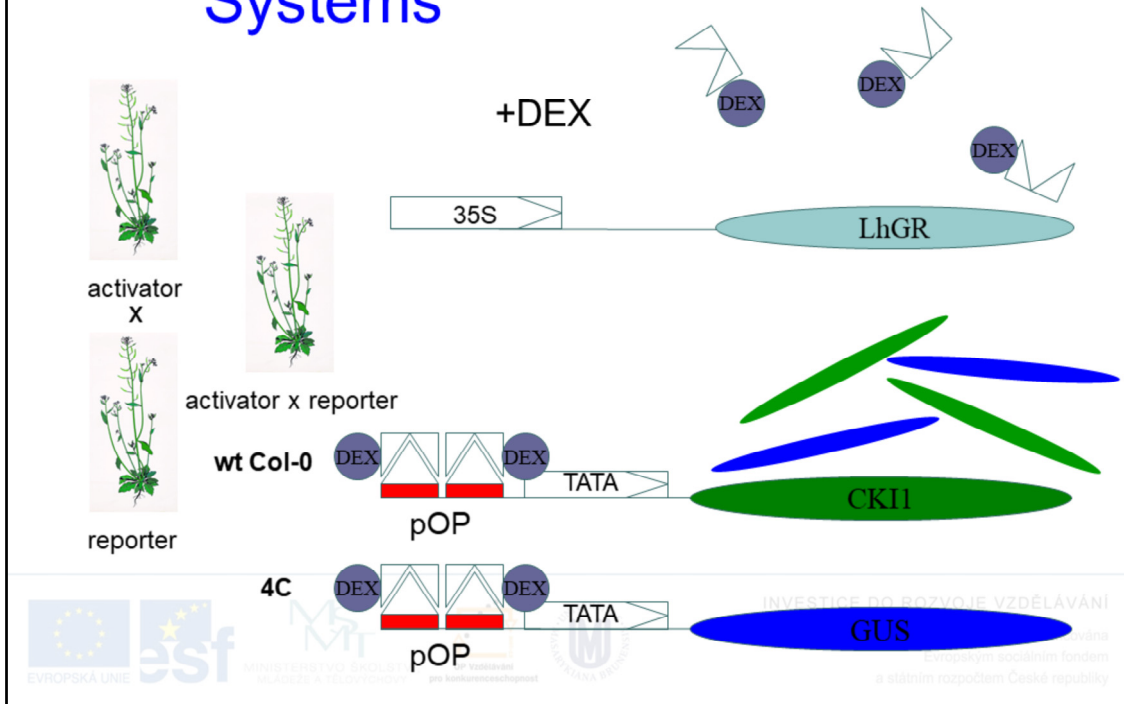
Regulated Expression Systems



INVESTICE DO ROZVOJE VZDĚLÁVÁNÍ

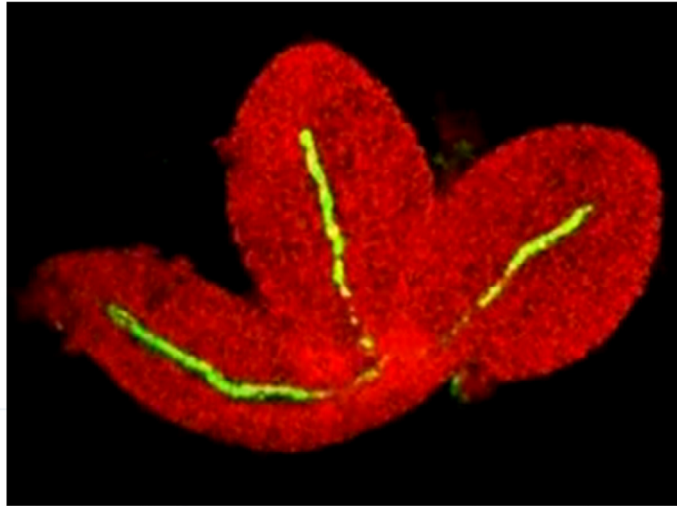
Tato prezentace je spolufinancována
Evropským sociálním fondem
a státním rozpočtem České republiky

Regulated Expression Systems



Regulated Expression Systems

- Regulatable gene expression systems
 - Time- or site-specific regulation of gene expression, leading to a change in phenotype and thereby identification of the natural function of the gene
 - pOP system
 - UAS system



MINISTERSTVO ŠKOLSTVÍ,
MLÁDEŽE A TĚLOVÝCHOVY

pro konkurenceschopnost

2014-20

a státním rozpočtem České republiky

Outline

- **Methods of gene expression analysis**
 - **Qualitative analysis of gene expression**
 - Preparation of **transcriptional fusion** of **promoter** of analysed gene with a **reporter gene**
 - Preparation of **translational fusion** of the **coding region** of the analysed gene with **reporter gene**
 - Use of the data available in **public databases**
 - **Tissue- and cell-specific** gene expression analysis
 - **Quantitative analysis of gene expression**
 - **DNA and protein chips**
 - **Next generation transcriptional profiling**
- **Regulation of gene expression in the identification of gene function by gain-of-function approaches**
 - **T-DNA activation mutagenesis**
 - **Ectopic expression and regulated gene expression systems**



Tato prezentace je spolufinancována
Evropským sociálním fondem
a státním rozpočtem České republiky

▪ **Chemical Genetics**

Chemical Genetics

- New trends
 - „chemical genetics“ – more than 50.000/120.417 records in PubMed database (16.10. 2008/15.11. 2018, an increase of >240 %)

The screenshot displays a PubMed search interface for the term "chemical genetics". The search results are sorted by "Most Recent" and show a list of articles. The first article is "Analysis of butterfly reproductive proteins using capillary electrophoresis and mass spectrometry" by Ruzhova MK, Rosen JL, Wilkerson C, Cramer A, and Axelrod-Baron 2018. Other articles include "ESK1 Suppression-Induced Degradation of MYC is Antagonized by a MEX3-ERK3 Compensatory Mechanism" and "Whole genome screen reveals a novel relationship between Tribolium levels and Drosophila host interactions". The interface includes filters for article types, species, and publication dates. A logo for "EVROPSKA UNIE" is visible in the bottom left corner of the screenshot.

ZDĚLÁVÁNÍ
evropským
fondem
České republiky

Chemical Genetics

- New trends
 - „chemical genetics“ – more than 50.000/130.437 records in PubMed database (16.10. 2008/24.10. 2019, an increase of >260 %)
 - Like in the case of genetics, there are also „forward“ and „reverse“ genetics approaches
 - Unlike in „classical“ genetics approaches, the subject of study is not a gene, but a protein
 - Chemical genetics tries to identify either the target protein after a chemical treatment and after following phenotypic changes („forward“ chemical genetics) or chemicals able to interact with protein of interest („reverse“ chemical genetics)
 - For that purpose there are carried out searches in the libraries of various chemicals (thousands of entries, commercially available)
 - example: analysis of endomembrane transport in plants

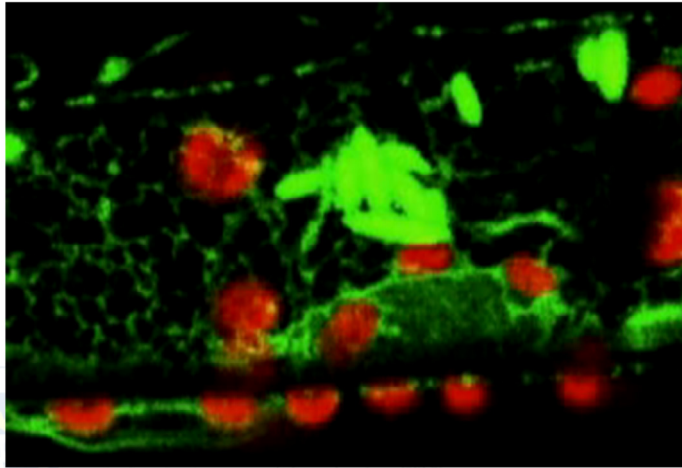


INVESTICE DO ROZVOJE VZDĚLÁVÁNÍ

Tato prezentace je spolufinancována
Evropským sociálním fondem
a státním rozpočtem České republiky

Chemical Genetics

- Analysis of mechanisms of endomembrane transport by chemical genetics approaches
 - In plants cells there occur very dynamic processes mediated mainly by endomembrane transport



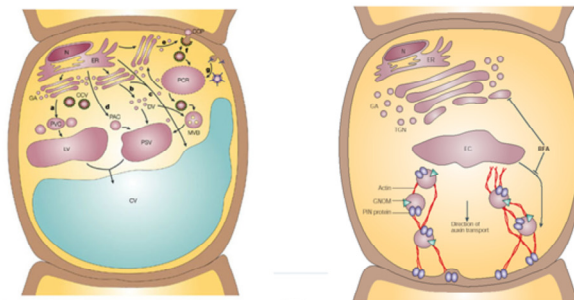
DO ROZVOJE VZDĚLÁVÁNÍ

Tato prezentace je spolufinancována
Evropským sociálním fondem
a státním rozpočtem České republiky

GFP targeted to the ER

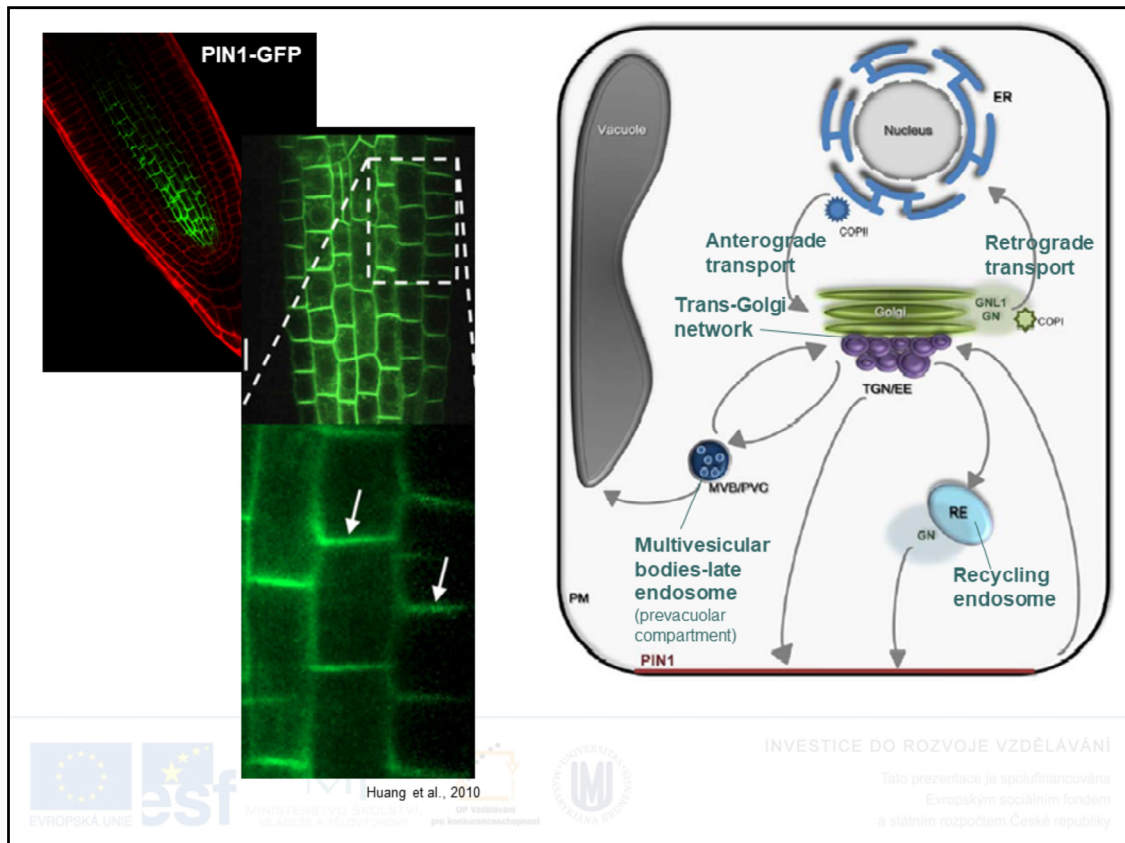
Chemical Genetics

- Analysis of mechanisms of endomembrane transport by chemical genetics approaches
 - In plants cells there occur very dynamic processes mediated mainly by endomembrane transport (see film, GFP targeting to the ER)
 - Endomembrane transport is an important regulatory mechanism in signal transduction and regulation of cellular processes



ROZVOJE VZDĚLÁVÁNÍ

Tato prezentace je spolufinancována
Evropským sociálním fondem
a státním rozpočtem České republiky



In the figure, there is a simplified scheme of vesicle trafficking pathways, regulated by GNOM and its closest relative, GNOM-LIKE1 (GNL1).

Secretory and membrane proteins are synthesized at the ER (blue) and passed onto the Golgi apparatus (green) by anterograde trafficking in COPII-coated vesicles.

The retrograde route from the Golgi apparatus to the ER is regulated by the ARF-GEFs GNOM (GN) and GNL1, which regulate the recruitment of COPI coats to the Golgi membrane. On the secretory route, proteins are transported to the sorting station, the trans-Golgi network (TGN; lilac).

From there, proteins are either transported to the vacuole (grey) via multivesicular bodies (MVB, also called prevacuolar compartment, PVC, which corresponds to the late endosome; deep blue) or trafficked to the plasma membrane (PM).

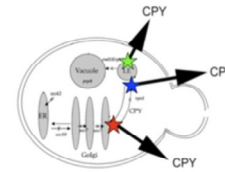
Plasma membrane proteins like the auxin efflux carrier PIN1 (red), which accumulates at the basal PM at steady state, are continually internalised and trafficked to the TGN, which resembles the early endosome (EE) in plants.

From the TGN, PIN1 is recycled to the plasma membrane via the recycling endosome (RE; light blue). This pathway is regulated by the ARF-GEF GNOM.

Chemical Genetics

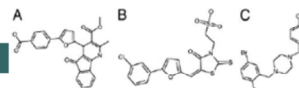
- Analysis of mechanisms of endomembrane transport by chemical genetics approaches

- By searching in the „library“ of chemicals there were identified those, that lead to the secretion of enzyme (carboxypeptidase Y) in yeast (*S. cerevisiae*) – this enzyme is normally transported to the vacuole via the endomembrane transport



- Analysis of changes in secretion using dot-blot and immunodetection of carboxypeptidase Y in the culture medium with monoclonal antibodies

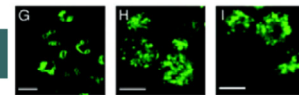
Chemical structure of sortins



Immunodetection of carboxypeptidase



Detection of vacuole phenotype (tonoplast shape) of yeast by staining with a specific color (MDY-64)



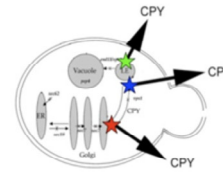
ELÁVÁNÍ

Tato prezentace je spolufinancována
Zouhar et al., 2004
nim fondem
a státním rozpočtem České republiky

Chemical Genetics

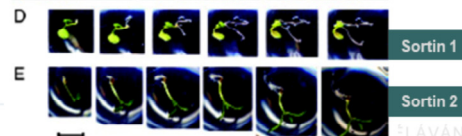
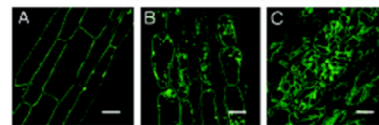
- Analysis of mechanisms of endomembrane transport by chemical genetics approaches

- By searching in the „library“ of chemicals there were identified those, that lead to the secretion of enzyme (carboxypeptidase Y) in yeast (*S. cerevisiae*) – this enzyme is normally transported to the vacuole via the endomembrane transport
 - Analysis of changes in secretion using dot-blot and immunodetection of carboxypeptidase Y in the culture medium with monoclonal antibodies



- Identified compounds („sortins“) were able to induce similar changes in *Arabidopsis* as well – transport mechanisms are conserved in yeast and in plants
- For detailed identification of the molecular process affected by one of the identified „sortins“, the analysis of its influence on a secretion of a marker protein (AtCPY) was performed – sortin 1 specifically inhibits only this secretory pathway

Shape of plant vacuoles using EGFP:-TIP



Phenotype of seedlings in the presence of sortins

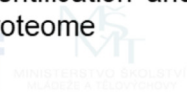
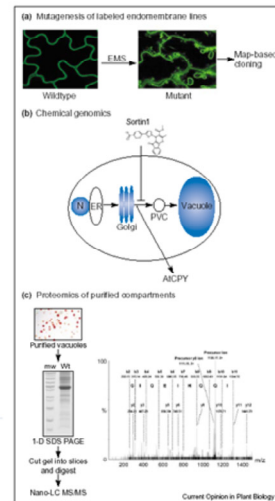
Zouhar et al., 2004 fin fondem
a statnim rozpoctem Ceské republiky



▪ Identification of mutants with altered sensitivity to sortin 1 (hyper- or hypo-sensitive mutants) by EMS mutagenesis

- Analysis of mechanisms of endomembrane transport by chemical genetics approaches – **summary**

- GFP::d-TIP vacuole membrane (tonoplast) labelling and **identification of mutations leading to altered tonoplast morphology**
- **Chemical genetics in combination with classical genetics** – identification of proteins participating in regulation of endomembrane transport
- **Proteomics approaches** – identification and analysis of vacuole proteome



OP VZDĚLÁVÁNÍ
spolufinancována
sociálním fondem
a státním rozpočtem České republiky

Summary

- **Methods of gene expression analysis**
 - **Qualitative analysis of gene expression**
 - Preparation of **transcriptional fusion** of **promoter** of analysed gene with a **reporter gene**
 - Preparation of **translational fusion** of the **coding region** of the analysed gene with **reporter gene**
 - Use of the data available in **public databases**
 - **Tissue- and cell-specific** gene expression analysis
 - **Quantitative analysis of gene expression**
 - **DNA and protein chips**
 - **Next generation transcriptional profiling**
- **Regulation of gene expression in the identification of gene function by gain-of-function approaches**
 - **T-DNA activation mutagenesis**
 - **Ectopic expression and regulated gene expression systems**
- **Chemical Genetics**



Tato prezentace je spolufinancována
Evropským sociálním fondem
a státním rozpočtem České republiky

Discussion



INVESTICE DO ROZVOJE VZDĚLÁVÁNÍ

Tato prezentace je spolufinancována
Evropským sociálním fondem
a státním rozpočtem České republiky