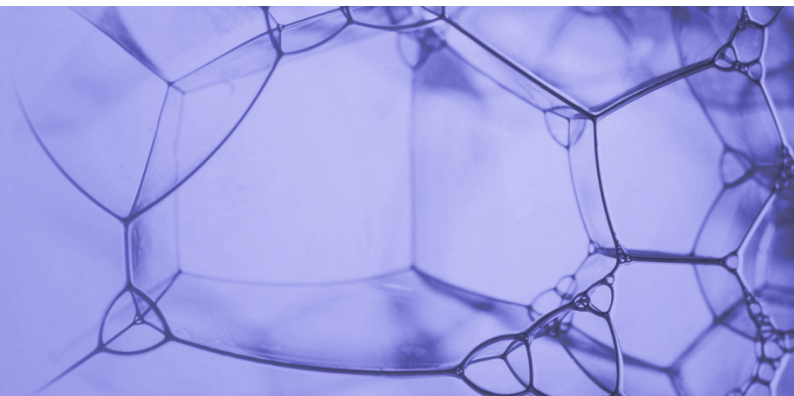


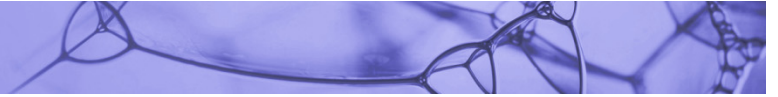
**LOSCHMIDT
LABORATORIES**



Expanding the building bricks of life

**Genetic code expansion, non-standard amino acids,
photocaging and optogenetics**

Dr. Martin Marek
Loschmidt Laboratories
Faculty of Science, MUNI
Kamenice 5, bld. A13, room 332
martin.marek@recetox.muni.cz



Questions

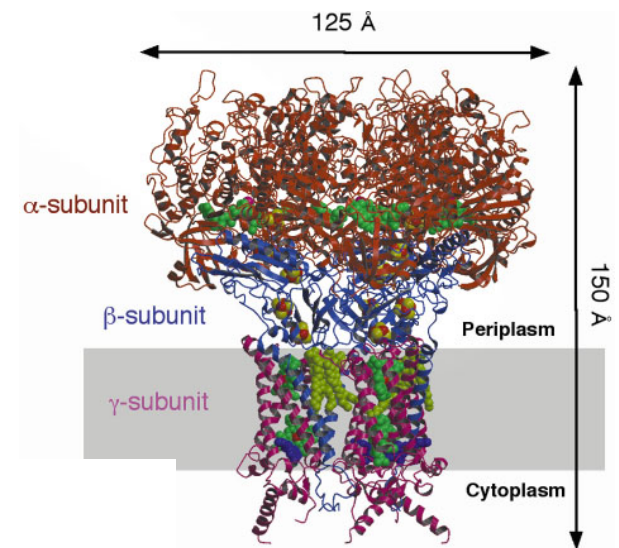
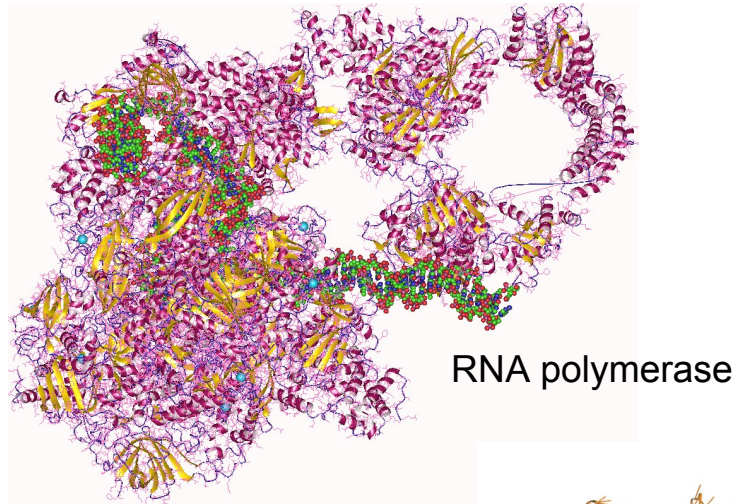


Short recapitulation of previous lesson

- How to build multi-subunit protein nanomachines?
- How to reconstitute multi-subunit protein complexes?
- How to determine 3D structure of protein nanomachines?
- What are viruses? And why to engineer them?
- Which viruses are used in synthetic biology?
- What is immunotherapy and gene therapy? Approaches?



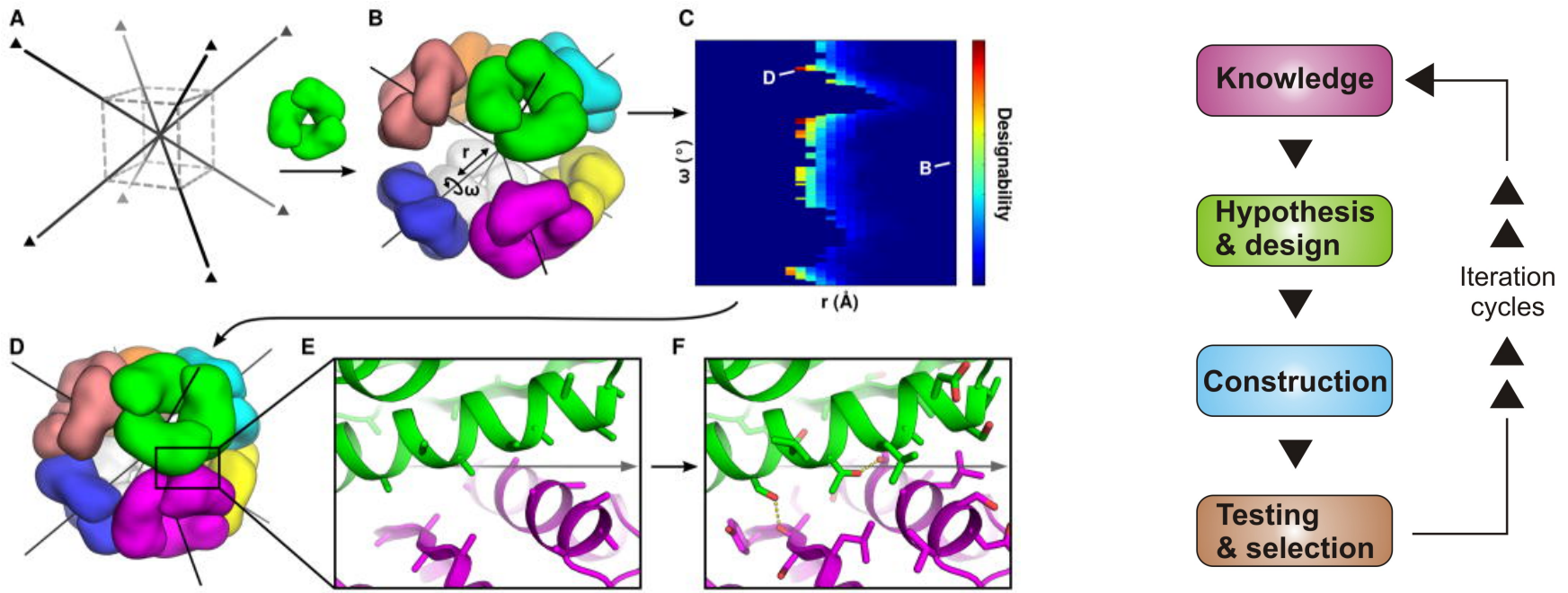
Recapitulation: protein nanomachines



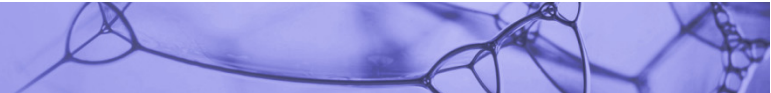
Membrane protein



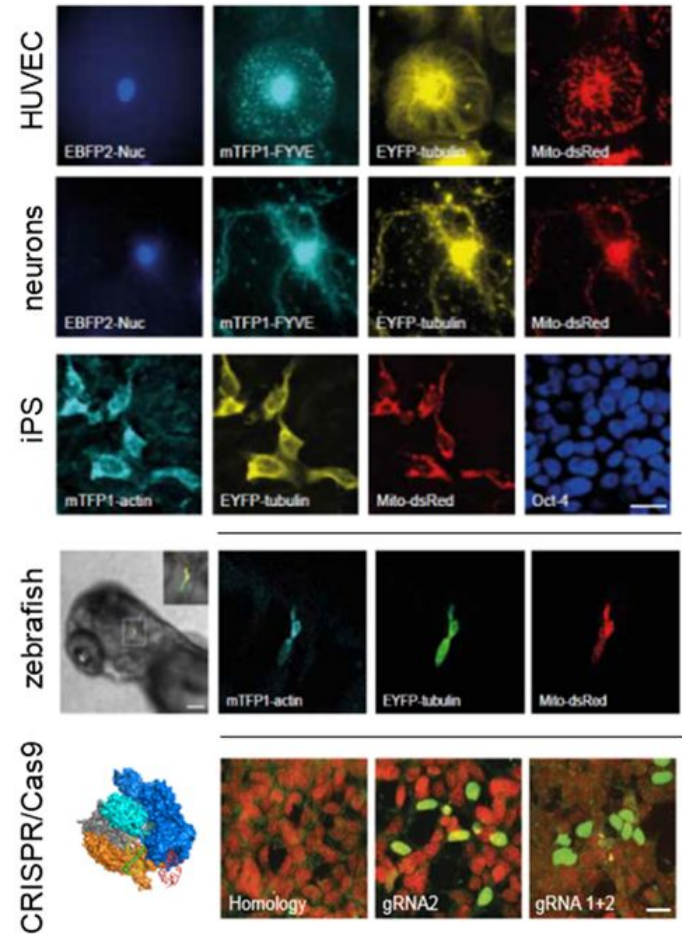
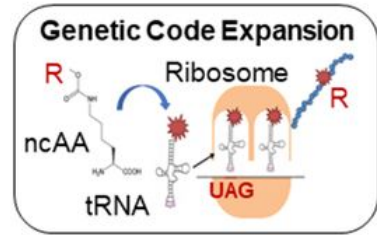
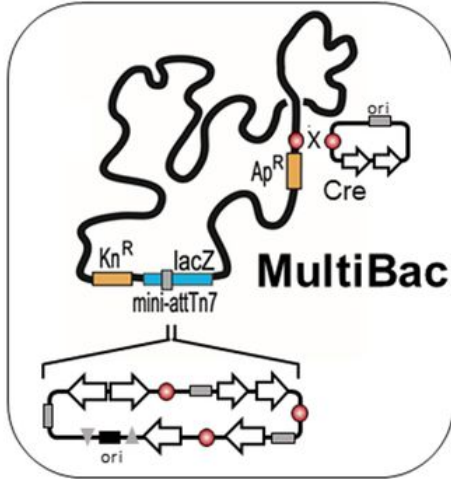
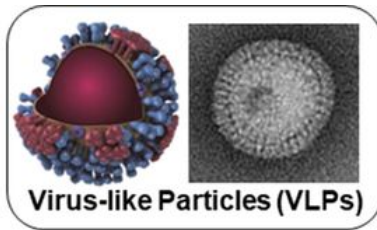
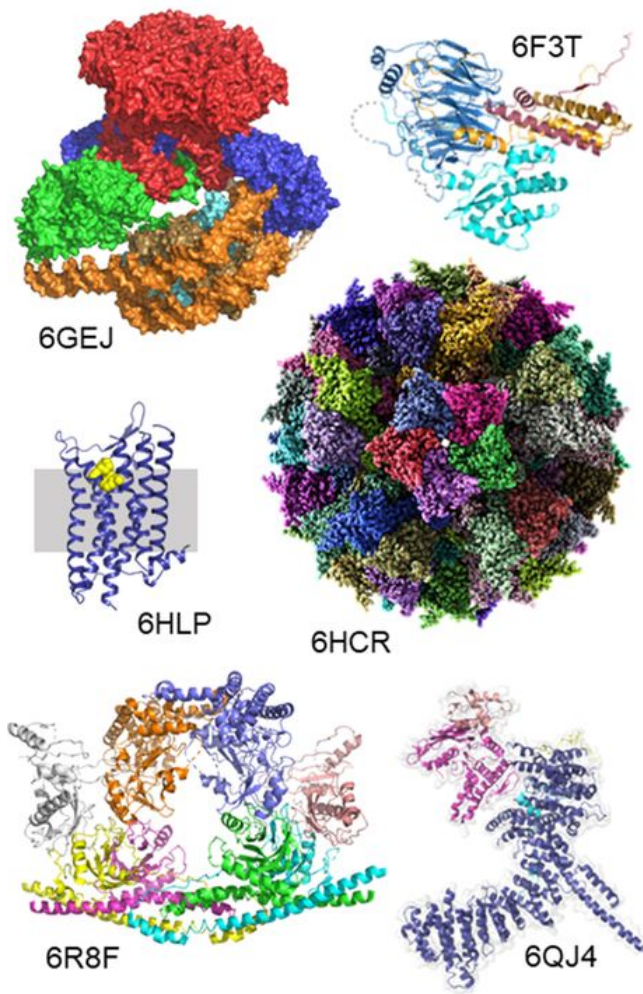
Recapitulation: Design of self-assembling biomachines



(A) First, a target symmetric architecture is chosen. Octahedral point group symmetry is used in this example; the threefold rotational axes are marked here by triangles and shown as black lines throughout. The dashed cube is shown to orient the viewer. **(B)** Multiple copies of the building block are symmetrically arranged in the target architecture by aligning their shared symmetry axes. The pre-existing organization of the oligomeric building block fixes several (in this case four) rigid body degrees of freedom (DOFs). **(C)** Symmetrical docking is performed by systematically varying the two DOFs (moves are applied symmetrically to all subunits) and computing the suitability of each configuration for interface design (red: more suitable; blue: less suitable). Points corresponding to the docked configurations in panels (B), in which the building blocks are not in contact, and **(D)**, a highly complementary interface, are indicated **(E, F)**.



Recapitulation: multi-expression systems



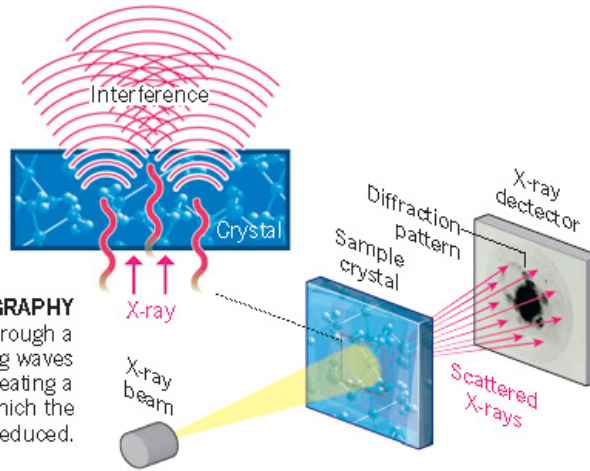


X-ray crystallography versus cryo-EM

STRUCTURE SOLVERS

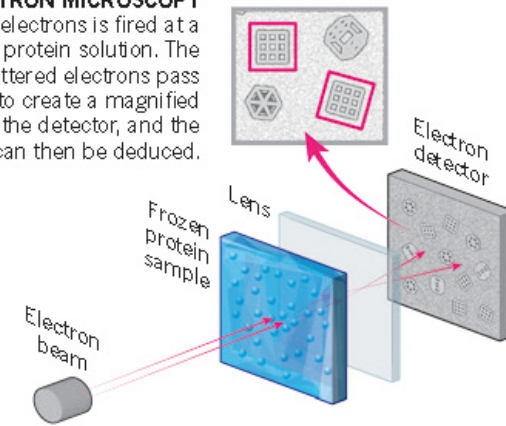
X-ray crystallography has long been the dominant method for deducing high-resolution protein structures, but cryo-electron microscopy is catching up.

X-RAY CRYSTALLOGRAPHY
X-rays scatter as they pass through a crystallized protein; the resulting waves interfere with each other, creating a diffraction pattern from which the position of atoms is deduced.

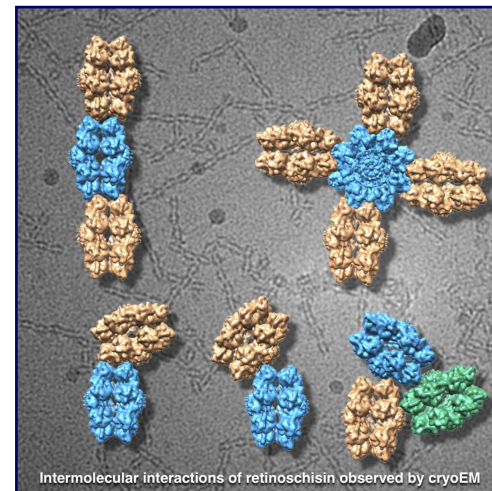
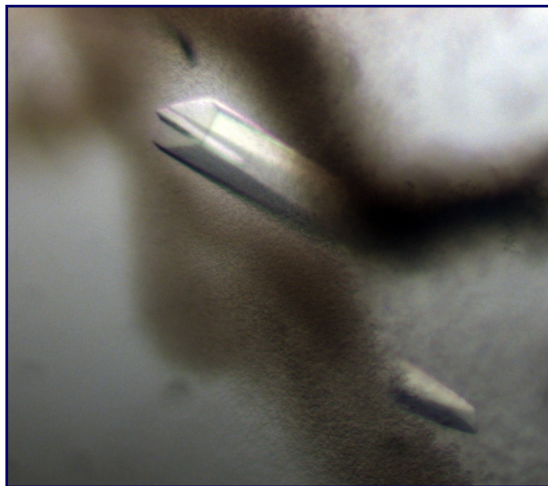


CRYO-ELECTRON MICROSCOPY

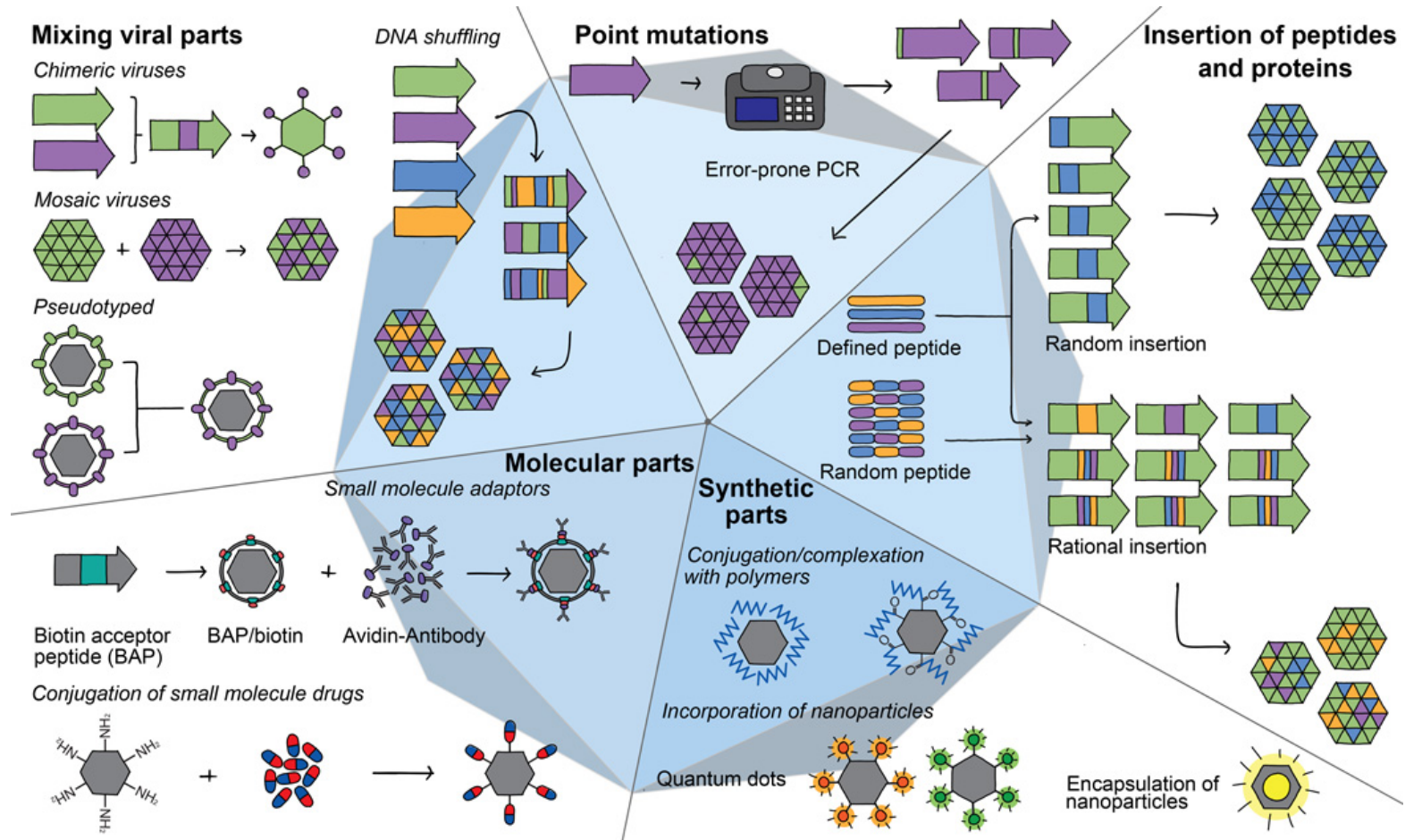
A beam of electrons is fired at a frozen protein solution. The emerging scattered electrons pass through a lens to create a magnified image on the detector, and the structure can then be deduced.

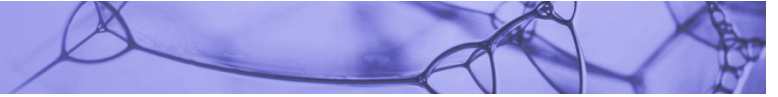


X-RAY IMAGE: SPL



Constructing *de novo* synthetic viruses for biomedicine



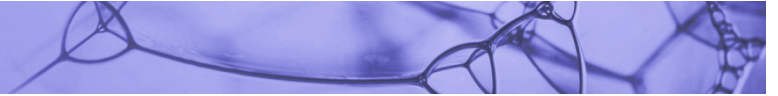


Expanding the building bricks of life

Concepts

Methods

Applications

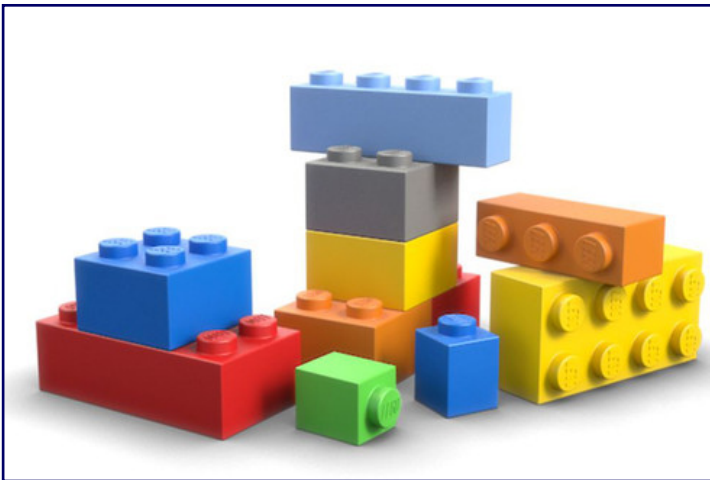


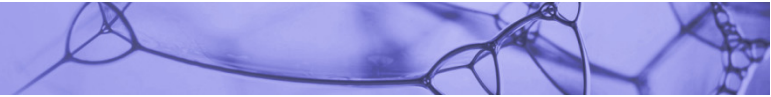
What will we talk about

- **Genetic code expansion**
 - Goals and applications
- **Non-standard amino acids**
 - Concepts, methodology, success stories
- **Cell-free protein expression**
 - Strategies, methodology, disadvantages, success stories
- **Optogenetics and photocaging in synthetic biology**
 - Concepts, methodology, success stories



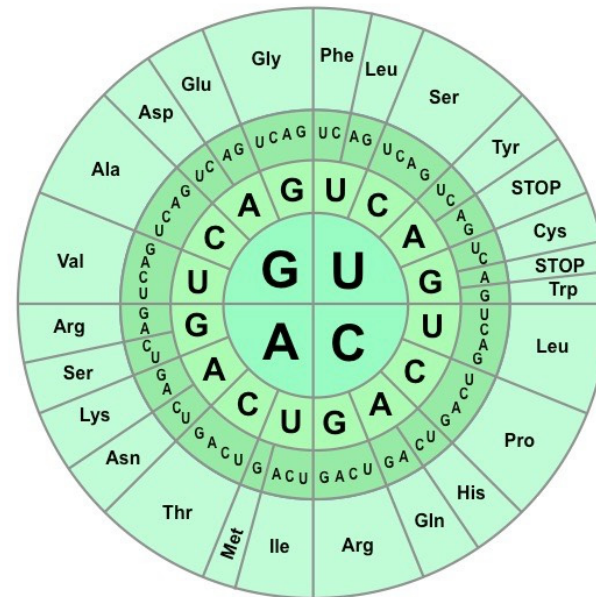
Building bricks: the LEGO system



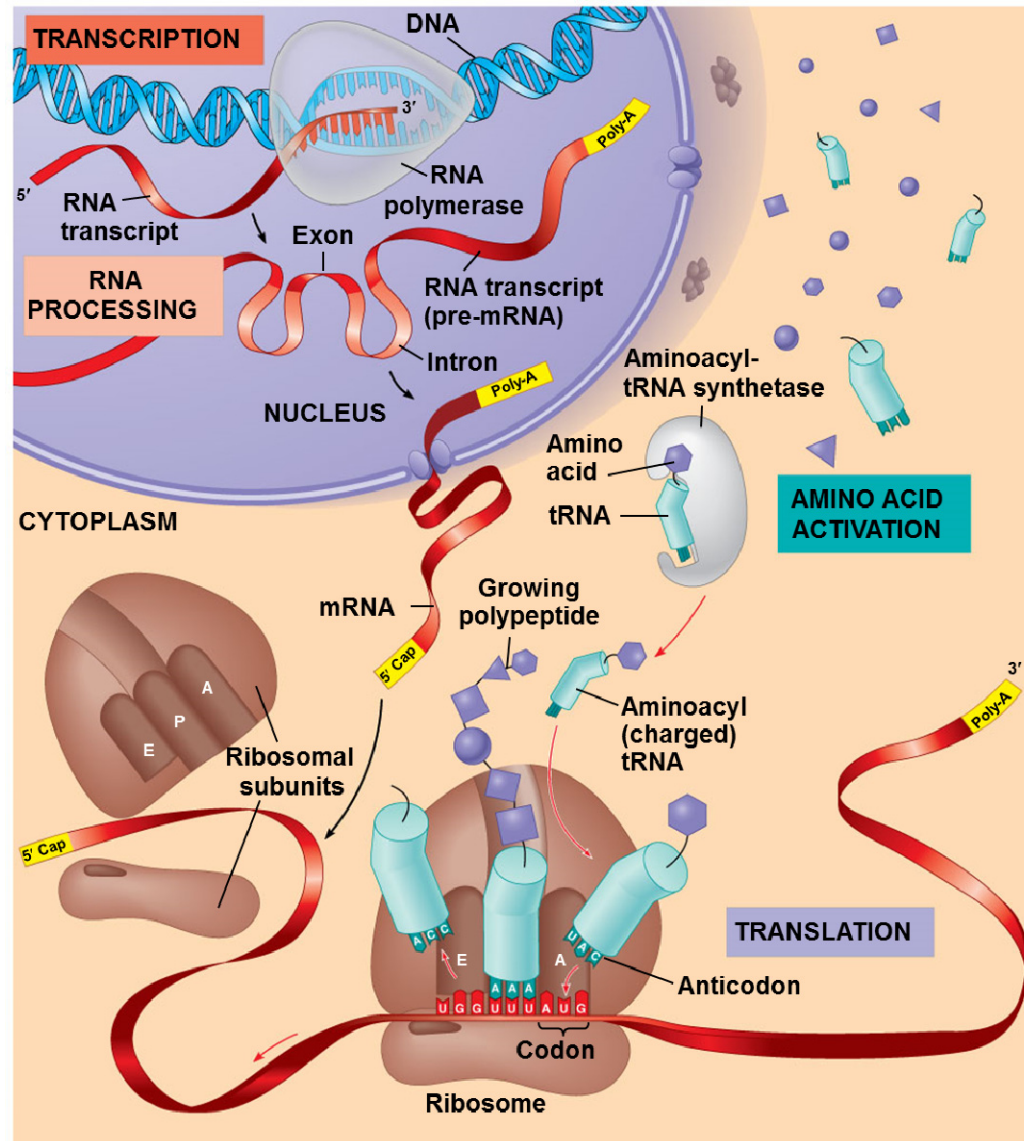


Genetic code expansion (GCE)

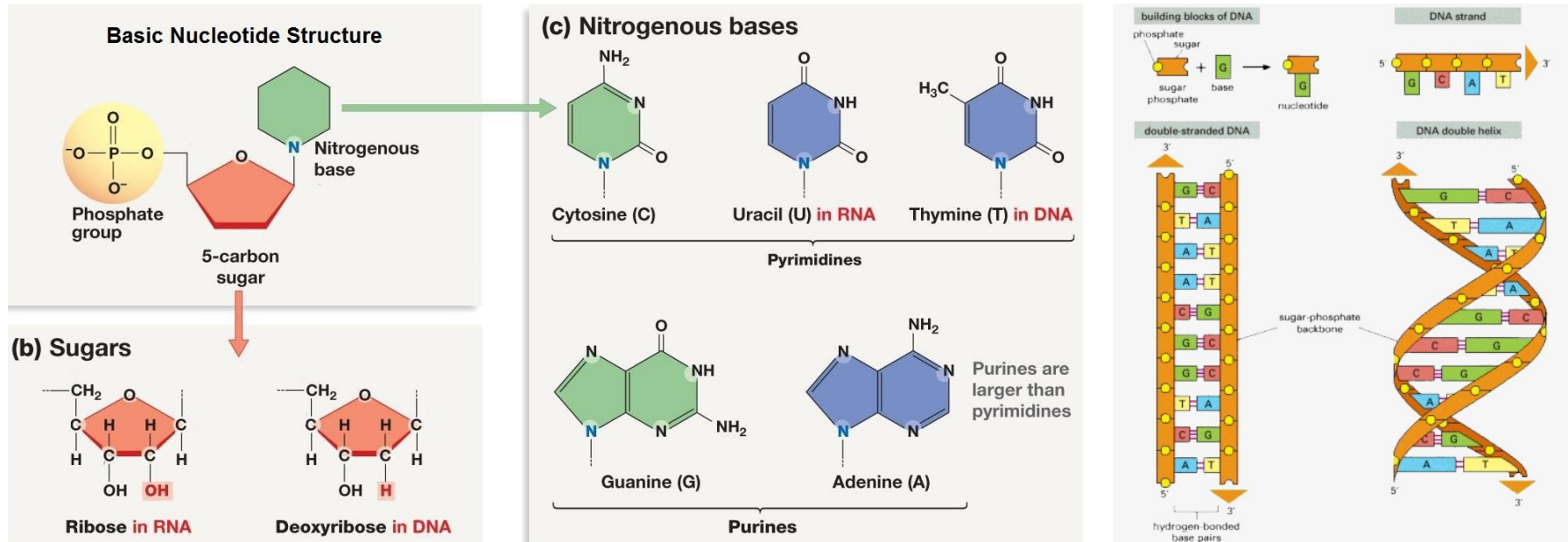
Concepts
Methods
Applications



How DNA directs protein synthesis



Standard building blocks of DNA and RNA





Non-standard building blocks of DNA and RNA

Science

Contents ▾

News ▾

Careers ▾

Journals ▾

SHARE

REPORT



Hachimoji DNA and RNA: A genetic system with eight building blocks

Shuichi Hoshika^{1,2,*}, Nicole A. Leal^{1,2,*}, Myong-Jung Kim^{1,2}, Myong-Sang Kim¹, Nilesh B. Karalkar^{1,2}, Hyo-Joong Kim¹, Ali...

+ See all authors and affiliations

Science 22 Feb 2019:
Vol. 363, Issue 6429, pp. 884-887
DOI: 10.1126/science.aat0971

Article

Figures & Data

Info & Metrics

eLetters

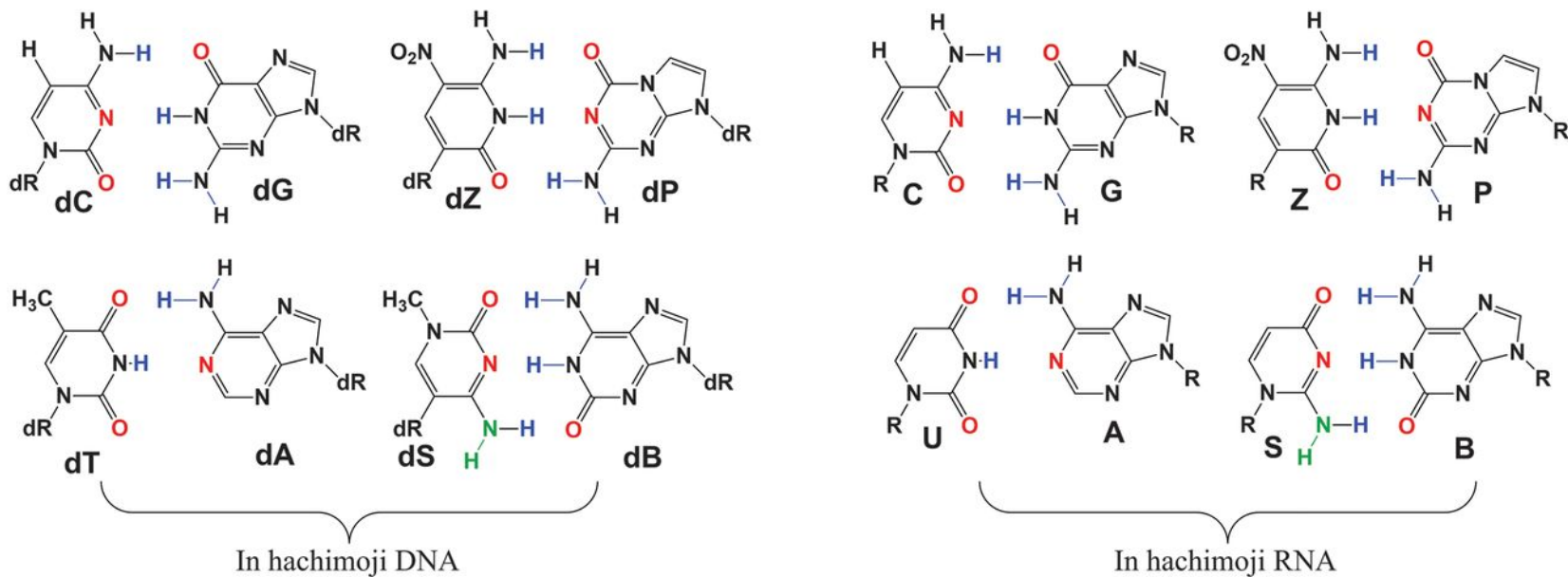
PDF

Expanding the genetic code

DNA and RNA are naturally composed of four nucleotide bases that form hydrogen bonds in order to pair. Hoshika *et al.* added an additional four synthetic nucleotides to produce an eight-letter genetic code and generate so-called hachimoji DNA. Coupled with an engineered T7 RNA polymerase, this expanded DNA alphabet could be transcribed into RNA. Thus, new forms of DNA that add information density to genetic biopolymers can be generated that may be useful for future synthetic biological applications.

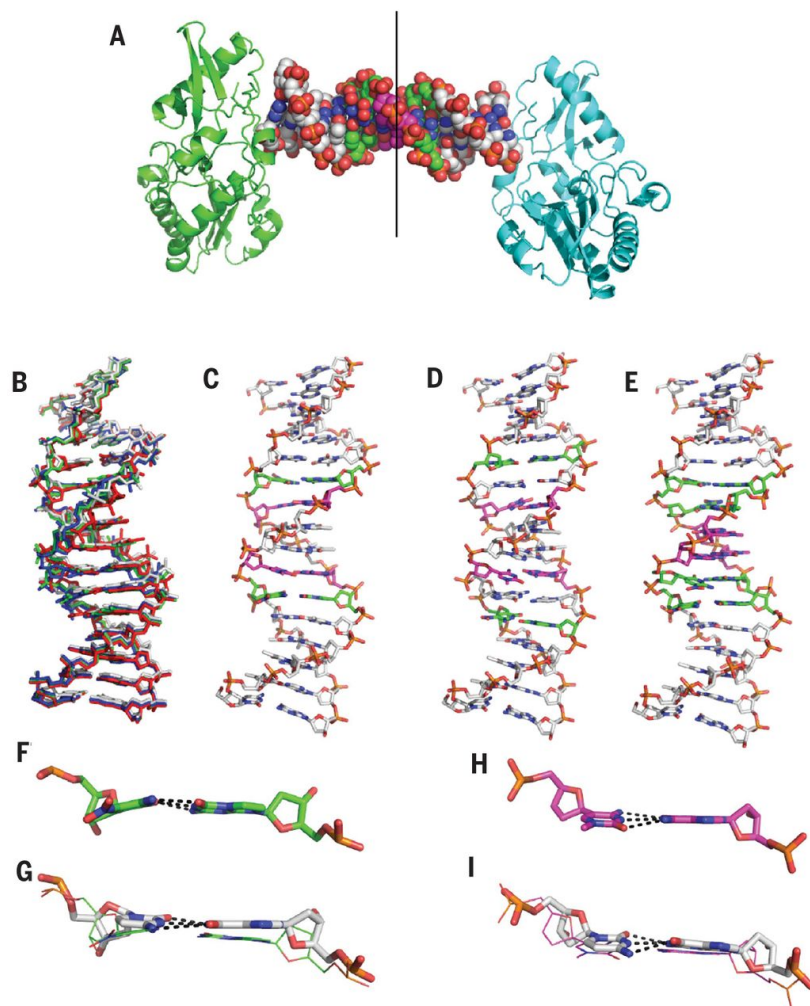
The eight nucleotides of hachimoji DNA and hachimoji RNA are designed to form eight-letter genetic code

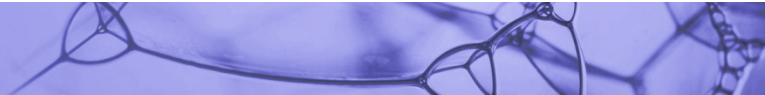
Genetic system from eight (“hachi”) building block “letters” (“moji”)



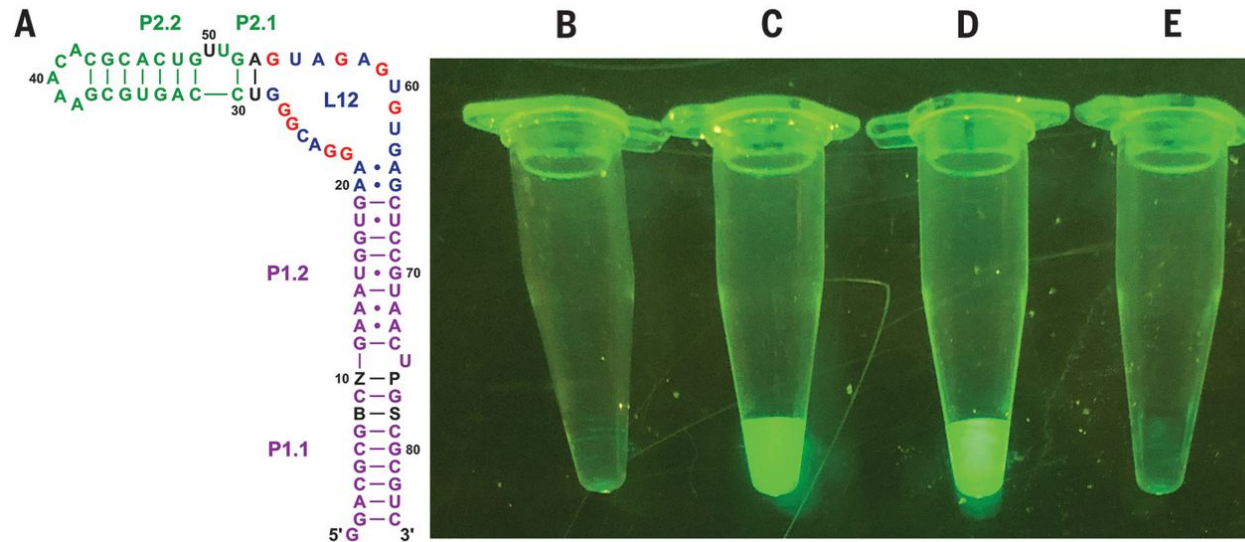
Hydrogen bond donor atoms involved in pairing are blue; hydrogen bond acceptor atoms are red. The left two pairs in each set are formed from the four standard nucleotides (note missing hydrogen-bonding group in the A:T pair, a peculiarity of standard terran DNA and RNA). The right two pairs in each set are formed from the four new nonstandard nucleotides.

Crystal structures of PB, PC, and PP hachimoji DNA

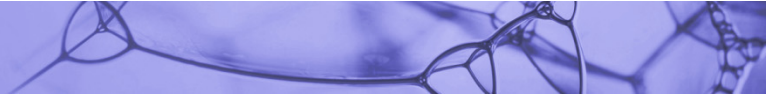




Structure and fluorescent properties of hachimoji RNA molecules



- (A) Schematic showing the full hachimoji spinach variant aptamer; additional nucleotide components of the hachimoji system are shown as black letters at positions 8, 10, 76, and 78 (B, Z, P, and S, respectively). The fluor binds in loop L12. Fluorescence of various species in equal amounts as determined by UV. Fluorescence was visualized under a blue light (470 nm) with an amber (580 nm) filter.
- (B) Control with fluor only, lacking RNA
- (C) Hachimoji spinach with the sequence shown in (A)
- (D) Native spinach aptamer with fluor
- (E) Fluor and spinach aptamer containing Z at position 50, replacing the A:U pair at positions 53:29 with G:C to restore the triple observed in the crystal structure. This places the quenching Z chromophore near the fluor; CD spectra suggest that this variant had the same fold as native spinach



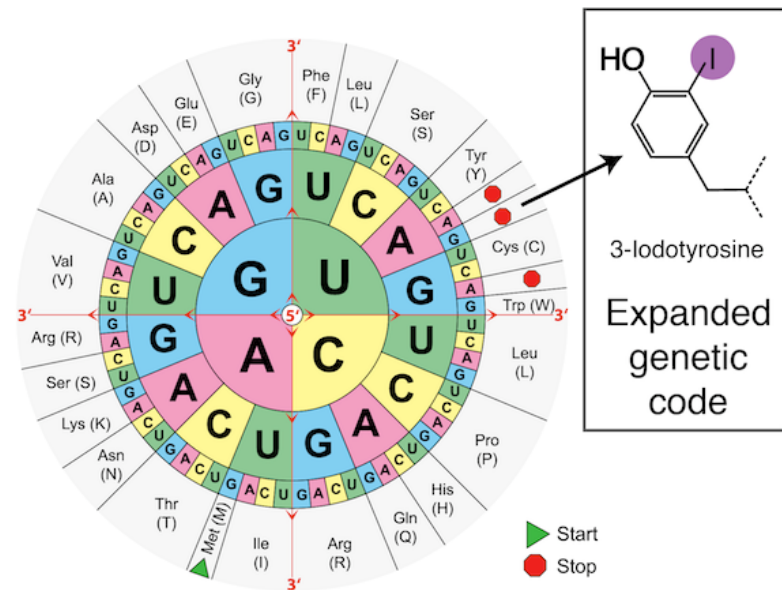
Hachimoji DNA- and RNA-like molecules: summary

- DNA- and RNA-like systems built from eight nucleotide “letters” (hence the name “hachimoji”) that form four orthogonal pairs
- These synthetic systems meet the structural requirements needed to support Darwinian evolution, including a polyelectrolyte backbone, predictable thermodynamic stability, and stereoregular building blocks that fit a Schrödinger aperiodic crystal
- Measured thermodynamic parameters predict the stability of hachimoji duplexes, allowing hachimoji DNA to increase the information density of natural terran DNA
- Three crystal structures show that the synthetic building blocks do not perturb the aperiodic crystal seen in the DNA double helix
- Hachimoji DNA was then transcribed to give hachimoji RNA in the form of a functioning fluorescent hachimoji aptamer. These results expand the scope of molecular structures that might support life, including life throughout the cosmos.

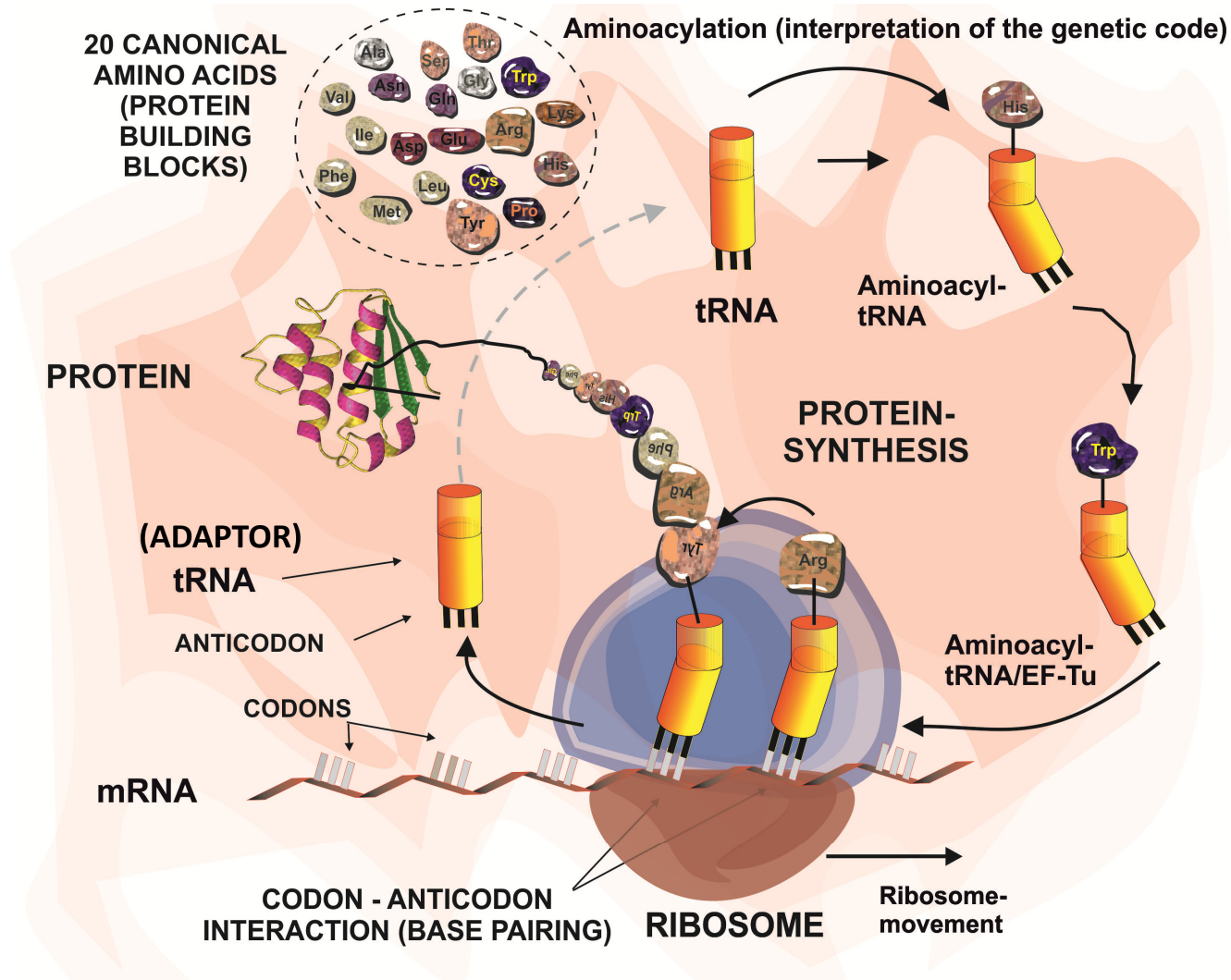


Non-standard amino acids

Concepts
Methods
Applications



The ribosome, a protein-RNA nanomachine for protein synthesis

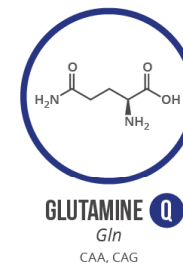
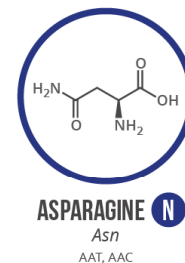
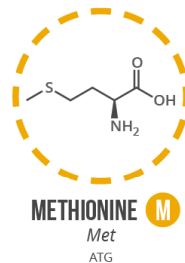
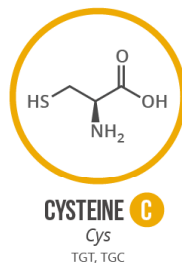
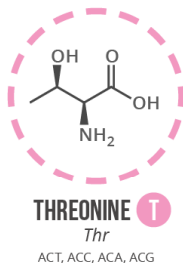
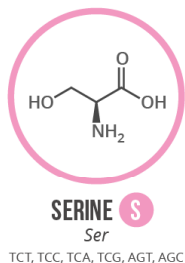
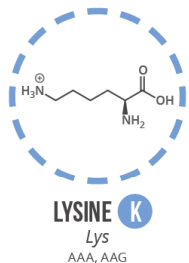
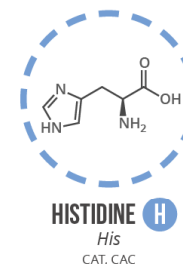
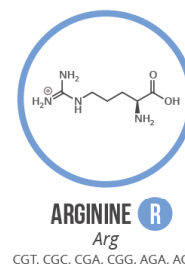
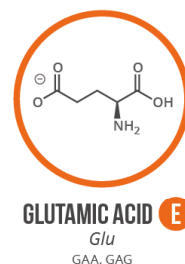
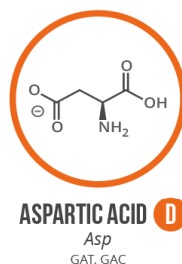
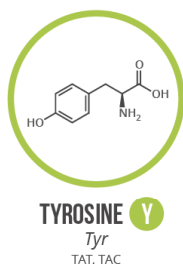
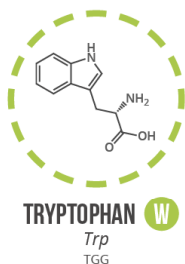
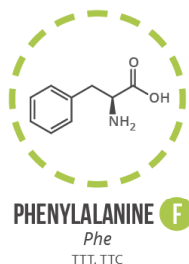
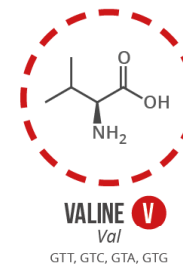
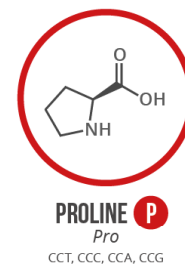
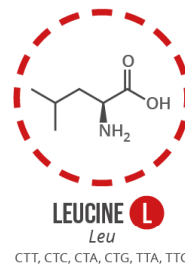
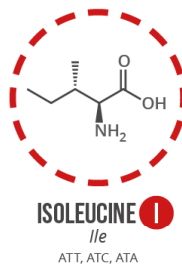
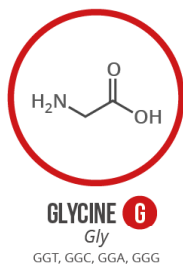
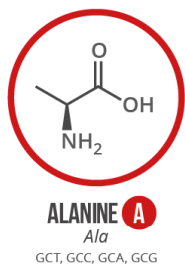
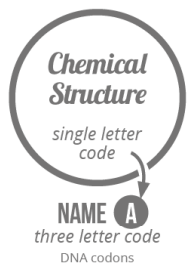




A GUIDE TO THE TWENTY COMMON AMINO ACIDS

AMINO ACIDS ARE THE BUILDING BLOCKS OF PROTEINS IN LIVING ORGANISMS. THERE ARE OVER 500 AMINO ACIDS FOUND IN NATURE - HOWEVER, THE HUMAN GENETIC CODE ONLY DIRECTLY ENCODES 20. 'ESSENTIAL' AMINO ACIDS MUST BE OBTAINED FROM THE DIET, WHILST NON-ESSENTIAL AMINO ACIDS CAN BE SYNTHESISED IN THE BODY.

Chart Key: ● ALIPHATIC ● AROMATIC ● ACIDIC ● BASIC ● HYDROXYLIC ● SULFUR-CONTAINING ● AMIDIC ○ NON-ESSENTIAL ○ ESSENTIAL

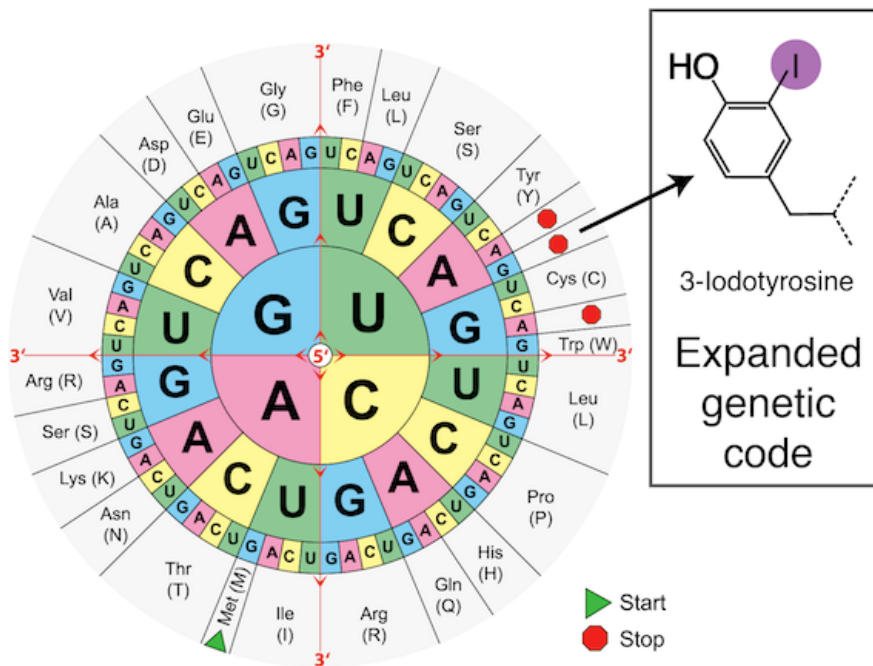


Note: This chart only shows those amino acids for which the human genetic code directly codes for. Selenocysteine is often referred to as the 21st amino acid, but is encoded in a special manner. In some cases, distinguishing between asparagine/aspartic acid and glutamine/glutamic acid is difficult. In these cases, the codes asx (B) and glx (Z) are respectively used.



Expanded genetic code

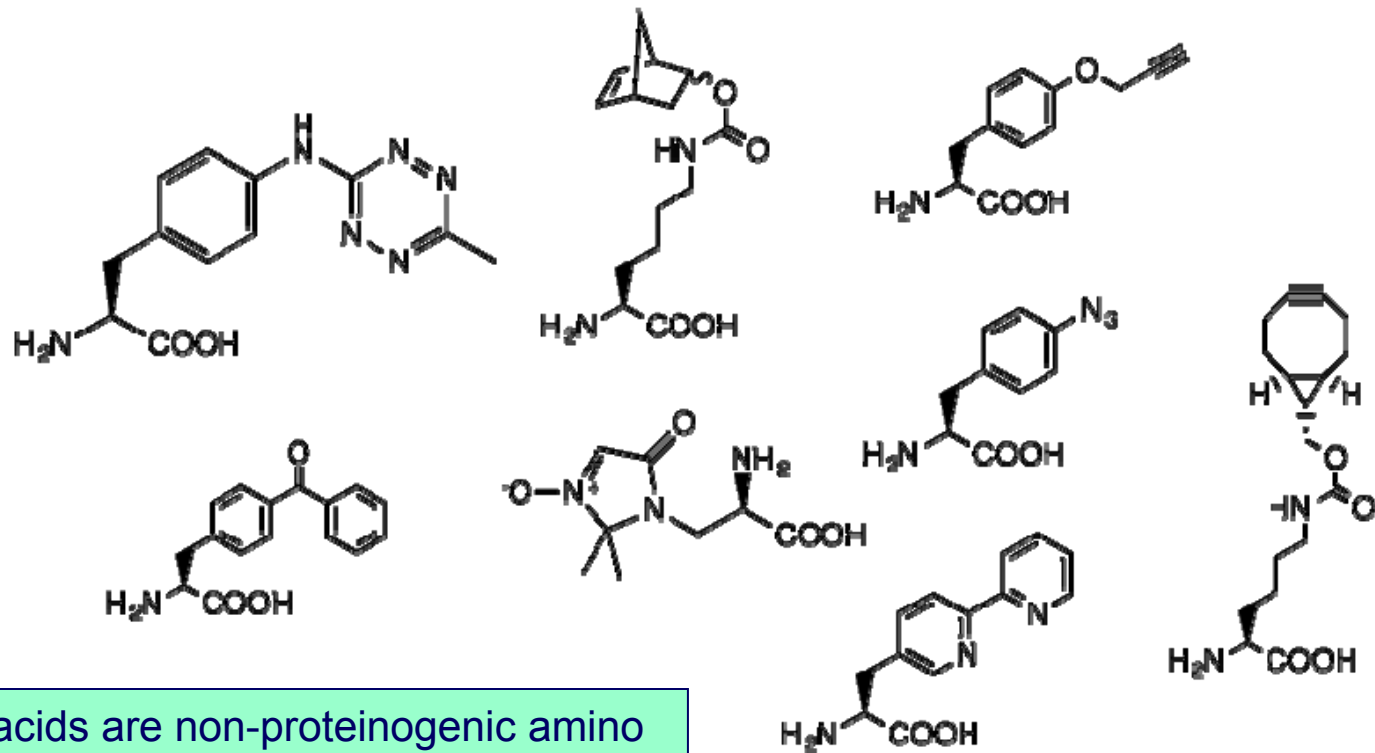
An **expanded genetic code** is an artificially modified genetic code in which one or more codons have been re-allocated to encode an amino acid that is not among the twenty naturally-encoded (canonical) amino acids



The key prerequisites to expand the genetic code are:

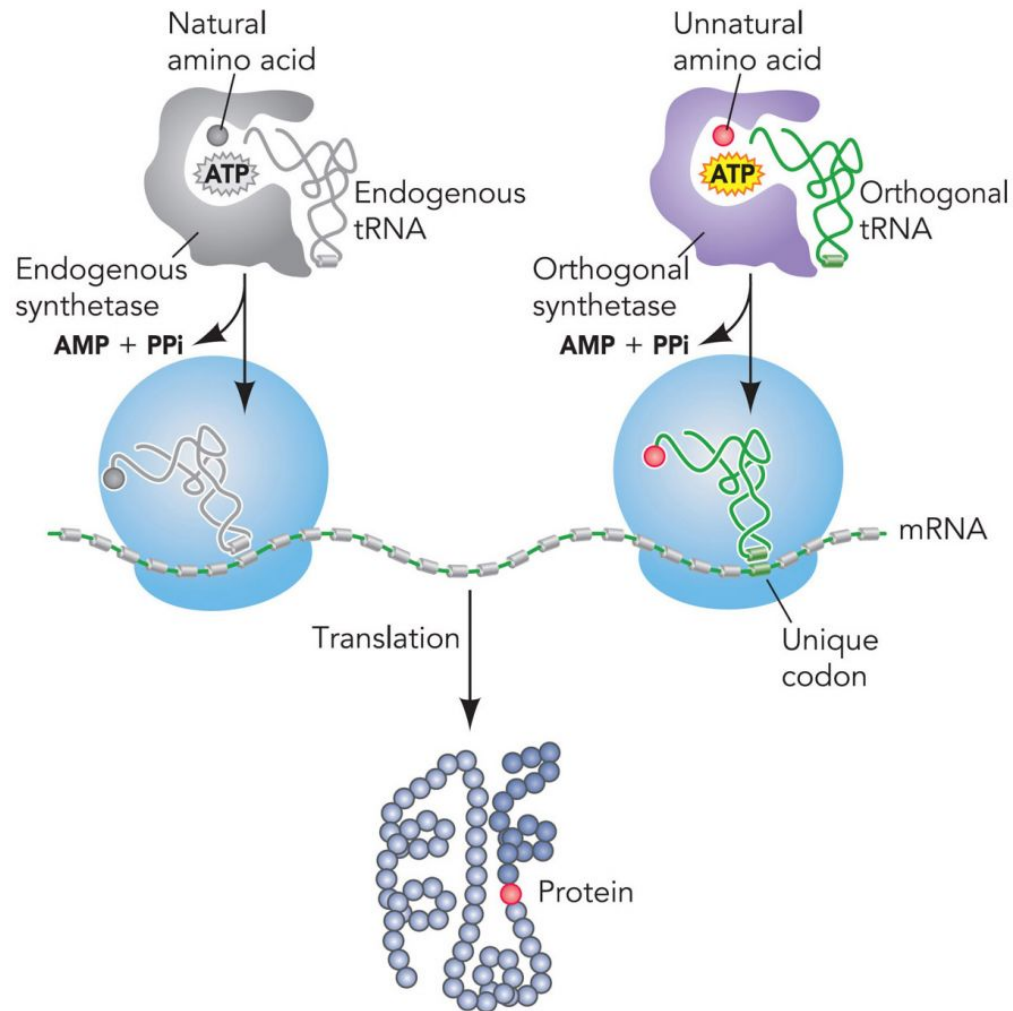
- the non-standard amino acid to encode
- an unused codon to adopt
- a tRNA that recognises this codon
- a tRNA synthetase that recognises only that tRNA and only the non-standard amino acid

Unnatural amino acids: examples



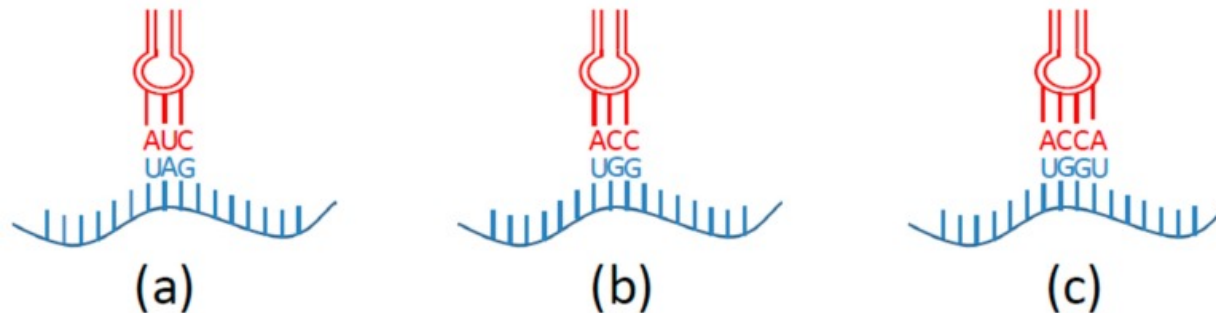
Unnatural amino acids are non-proteinogenic amino acids that either occur naturally or are chemically synthesized. Unnatural amino acids represent a nearly infinite array of **diverse structural elements** for the development of new synthetic proteins via the **expanded genetic code** approach.

Incorporation of unnatural amino acid into proteins: a basic concept



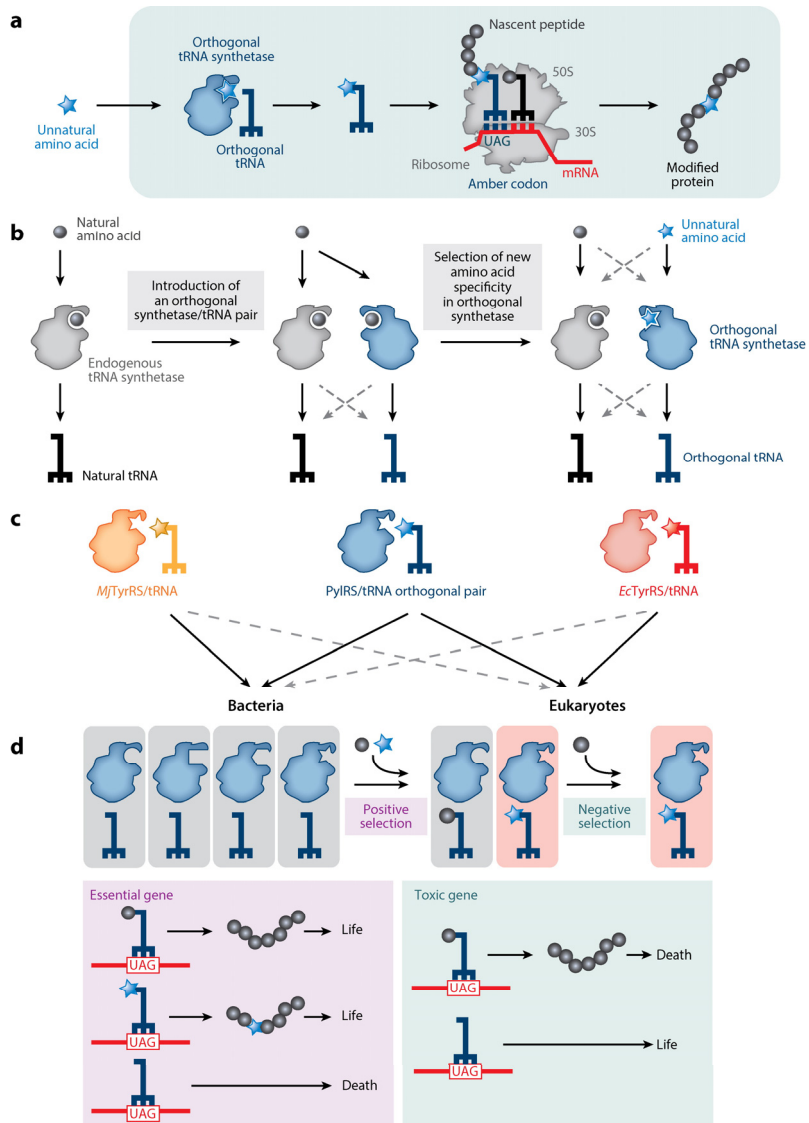
- The method involves the generation of an **orthogonal tRNA/synthetase** pair, which does not crosstalk with endogenous tRNA/synthetase pairs but is functionally compatible with the protein translational machinery
- The orthogonal synthetase is engineered to charge the desired unnatural amino acid (Uaa) onto the orthogonal tRNA, and the tRNA decodes a unique codon (such as the amber stop codon UAG) to incorporate the Uaa into proteins through translation

Site-specific incorporation of NAAs into proteins



- (a) Initially, site-specific incorporation of NAA into a protein was based on **nonsense suppression**, where the term “nonsense suppression” refers to the use of nonsense codons and suppressor tRNAs, which recognize stop codons. The amber UAG stop codon has been most frequently used for the incorporation of NAAs, but the use of the ochre (UAA) stop and the opal (UGA) stop codons have been applied, especially for the incorporation of diverse NAAs into one recombinant protein. The major advantage of the nonsense suppression technique lies in its simplicity. Nevertheless, even amber stop codon terminates about 320 genes in the model laboratory strain of *E. coli* K-12, meaning that the NAA would be incorporated not only in the protein of interest but also in response to TAG stop codons of the genes present in the genome
- (b) **Rarely used sense codons**, such as arginine (AGG) or proline (CCC) codons of *E. coli*, can be used for direct NAA incorporation in proteins
- (c) Finally, design of **extended codons and frameshift suppression**. In this approach, an mRNA containing an extended codon consisting of four or five bases is read by a modified aa-tRNA containing the corresponding extended anticodon, and a full-length protein containing NAA at the specific site is obtained

Site-specific incorporation of NAAs into proteins



(a) Genetic code expansion enables the site-specific incorporation of an unnatural amino acid into a protein via cellular translation

(b) The process of discovering orthogonal aminoacyl-tRNA (transfer RNA) synthetases for unnatural amino acids

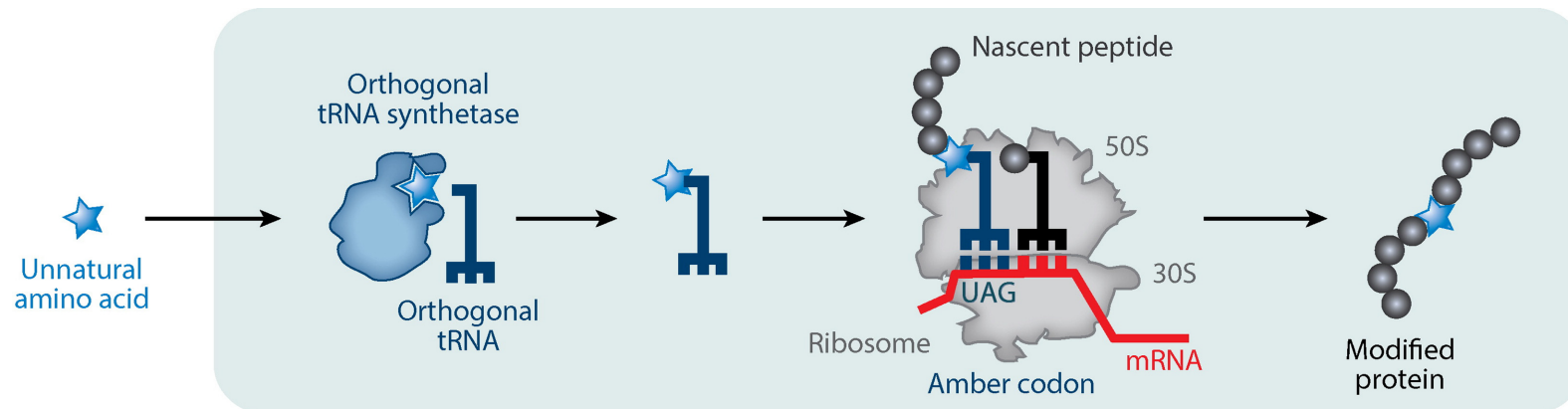
(c) Orthogonality of synthetase/tRNA pairs in different hosts. The solid lines indicate that a pair is orthogonal in a host

(d) Sequential positive and negative selections enable the discovery of synthetase/tRNA pairs that direct the incorporation of unnatural amino acids

Abbreviations: *Ec* TyrRS, Escherichia coli tyrosyl-tRNA synthetase; *Mj* TyrRS, Methanococcus janaschii tyrosyl-tRNA synthetase; mRNA, messenger RNA; PylRS, pyrrolysyl-tRNA synthetase

Unnatural acid incorporation into proteins

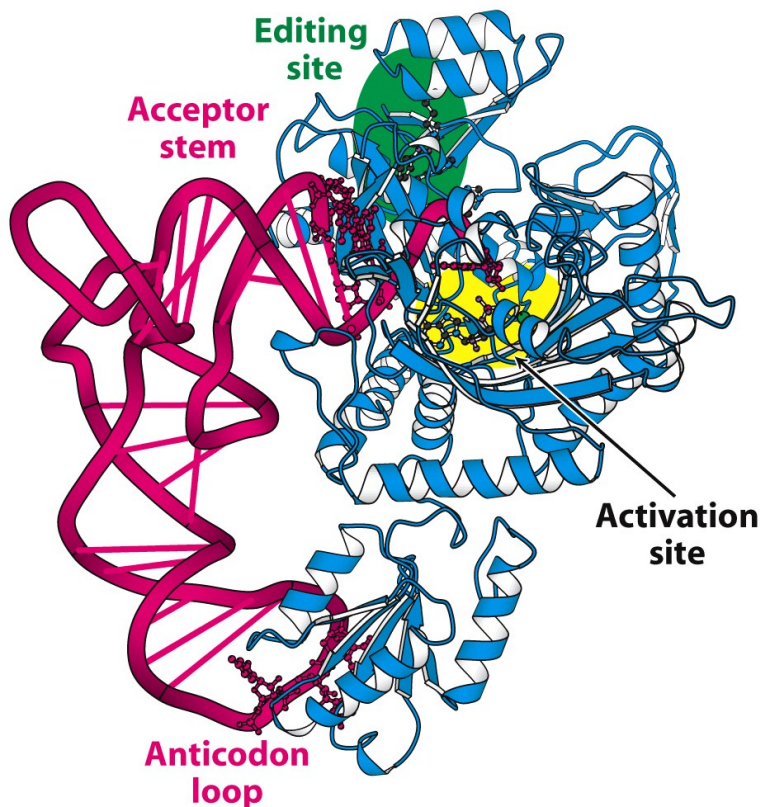
In a typical unnatural amino acid incorporation experiment, the unnatural amino acid is added to the cell, recognized by the altered-specificity orthogonal synthetase, and used to aminoacylate the orthogonal tRNA. The orthogonal tRNA is decoded by the ribosome in response to a blank codon (which has been inserted into a gene of interest) on the messenger RNA (mRNA), leading to unnatural amino acid incorporation at a genetically defined position in the encoded polypeptide chain.



Genetic code expansion enables the site-specific incorporation of an unnatural amino acid into a protein via cellular translation

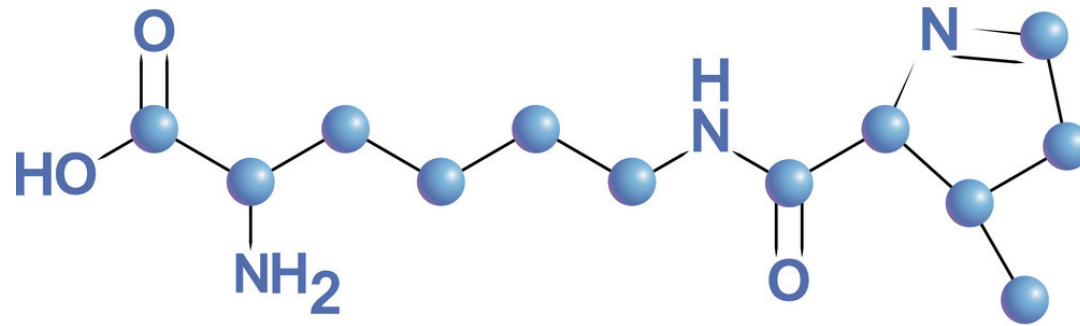
Orthogonal aminoacyl-tRNA synthetases

To use an orthogonal pair for genetic code expansion, the active site of the synthetase must specifically bind an unnatural amino acid, and no natural amino acids, and must transfer the unnatural amino acid onto its cognate orthogonal tRNA.



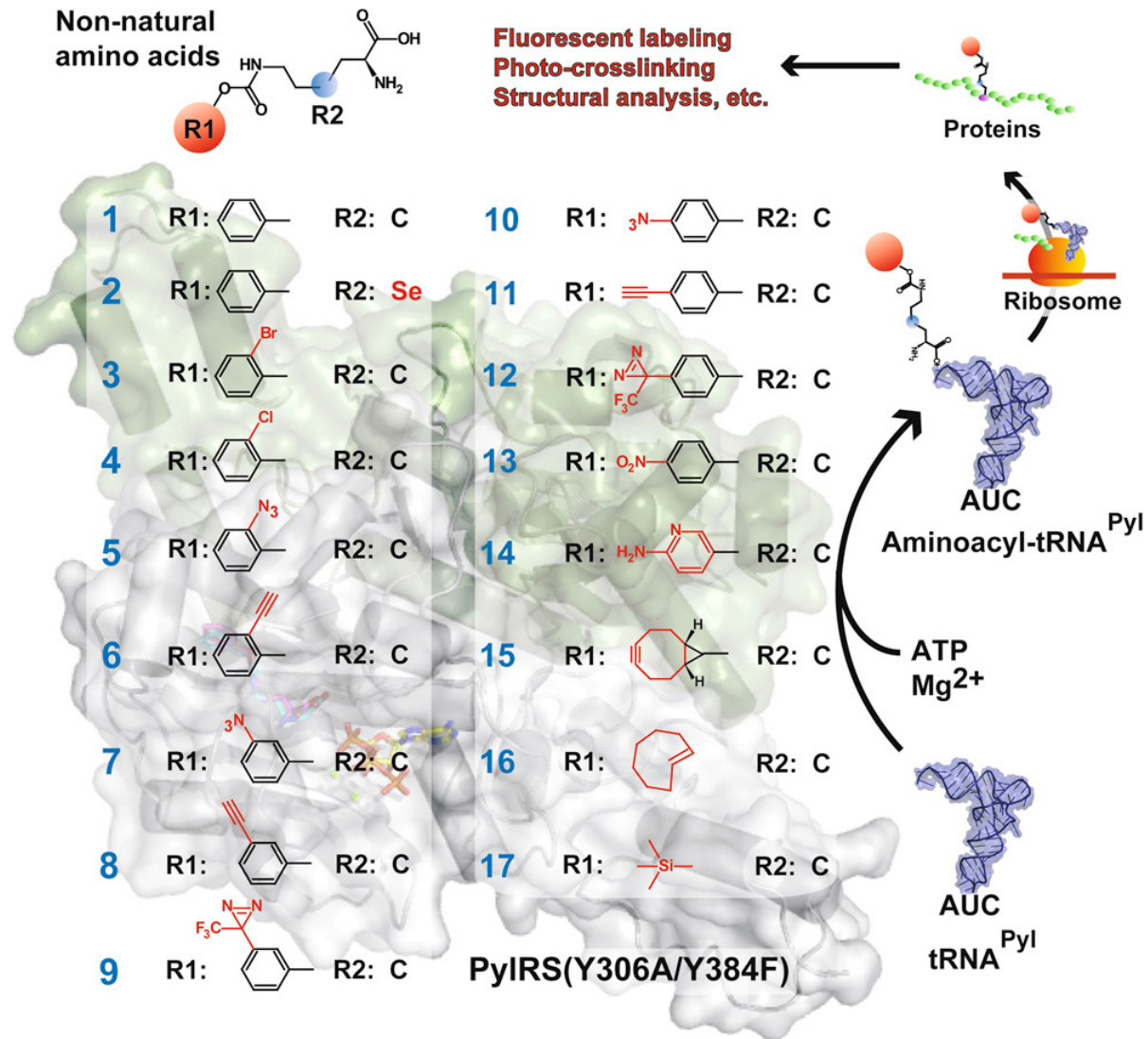
- For orthogonal synthetases that bind one of the 20 common amino acids (*MjTyrRS*, *EcTyrRS*, *EcLeuRS*), this process requires evolution of the enzyme active site to destroy natural amino acid binding and facilitate specific unnatural amino acid binding
- *PylRS* naturally binds pyrrolysine but none of the common amino acids, so it is not necessary to mutate the active site to remove natural amino acid binding. Moreover, while the substrate scope of *PylRS* has been substantially expanded by directed evolution, some useful unnatural amino acids can also be incorporated using the wild-type *PylRS*, thereby facilitating unnatural amino acid incorporation

Pyrrolysine

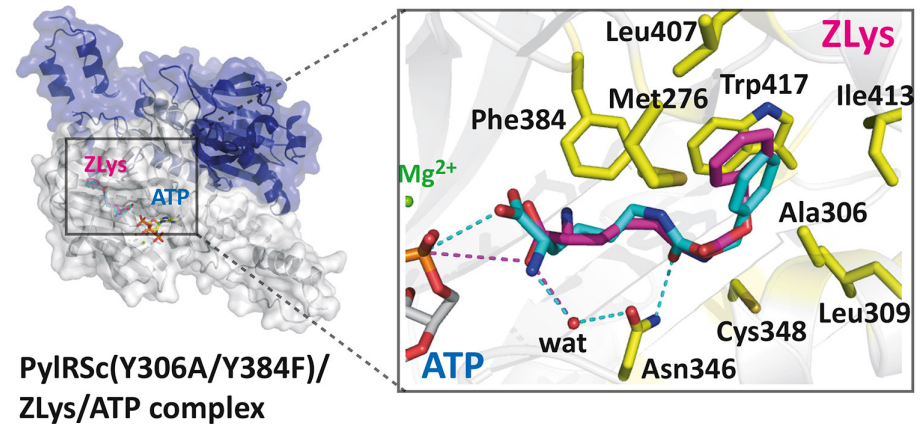
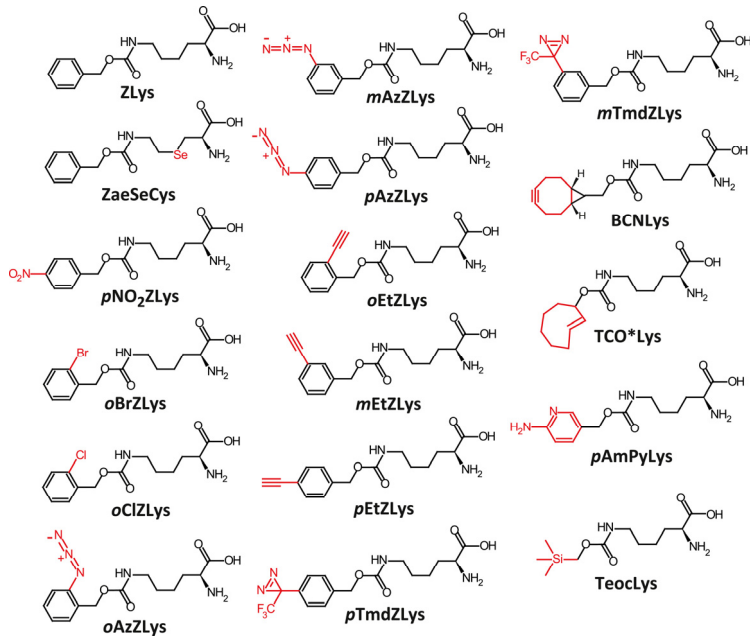


- **Pyrrolysine** is encoded by the 'amber' stop codon (**UAG**) is an amino acid that is used in the biosynthesis of proteins in some methanogenic archaea and bacteria.
- It is not present in eukaryotes.

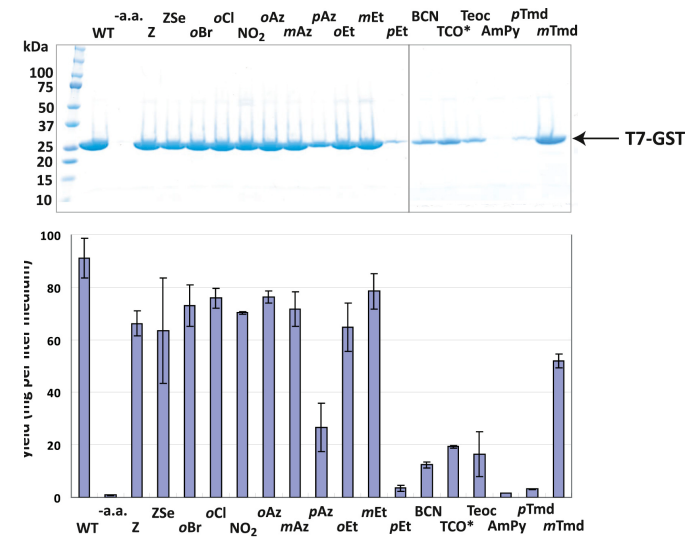
Pyrrolysyl-tRNA synthetase (PylRS) and tRNA^{Pyl}



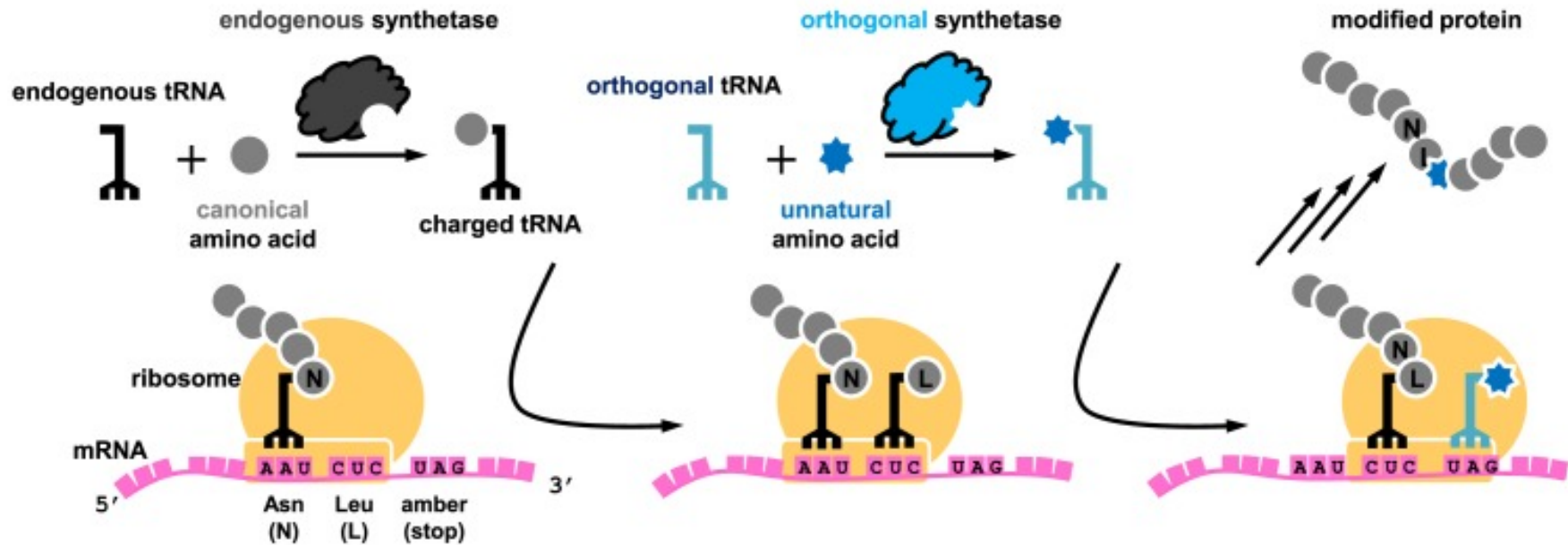
Incorporation of the non-natural lysine derivatives



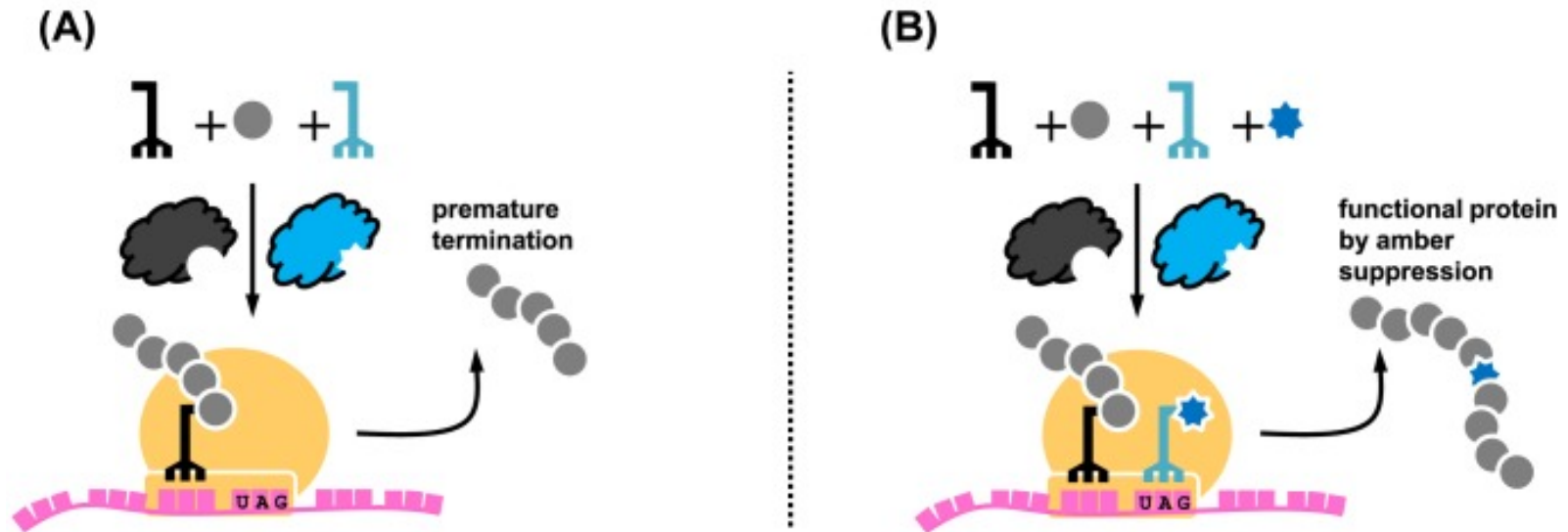
- A mutant pyrrolysyl-tRNA synthetase, PyIRS(Y306A/Y384), acts on diverse amino acids
- The PyIRS mutant and tRNA^{PyI} incorporated 17 non-natural amino acids into proteins
- Crystal structures of the PyIRS mutant bound with 14 of the amino acids were solved
- This information will facilitate the structure-based design of novel amino acids



Mechanism of genetic code expansion for incorporation of an unnatural amino acid by amber suppression

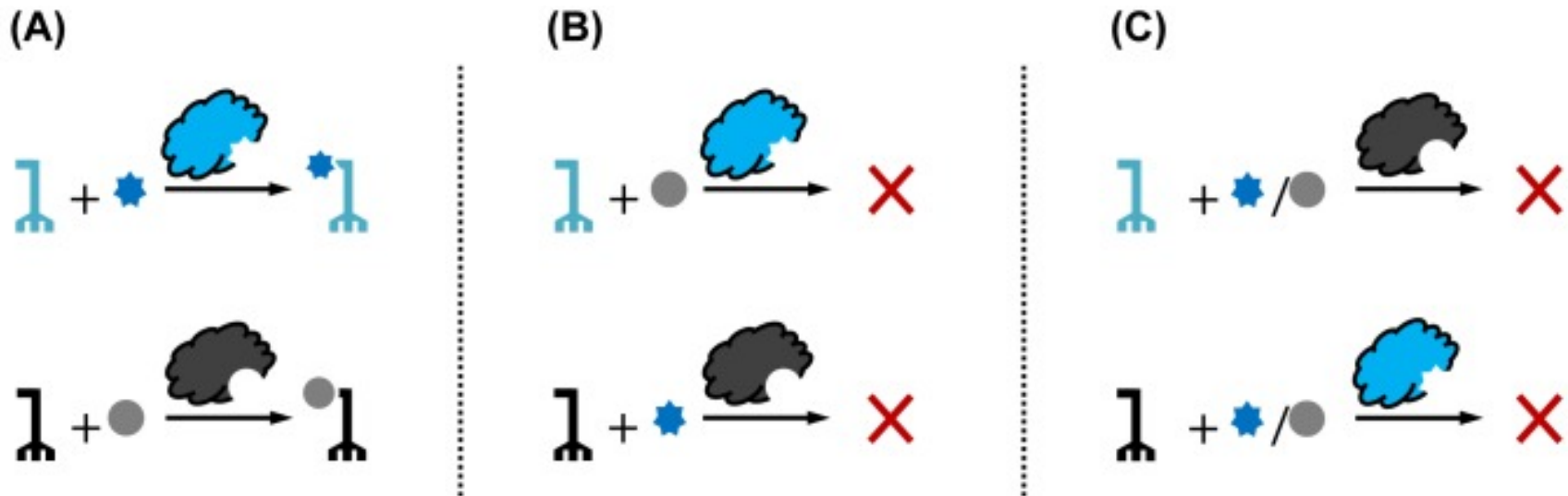


Use of amber suppression to switch on protein production



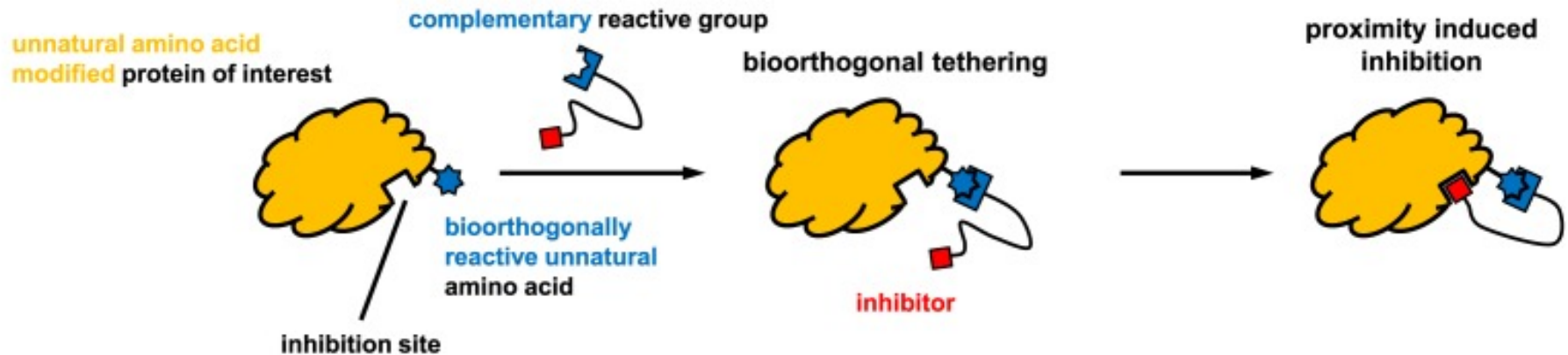
(A) Absence of the unnatural amino acid leads to recognition of the UAG codon for translation termination. **(B)** Addition of the unnatural amino acid leads to amber suppression and successful production of the full-length and functional protein.

Allowed and not allowed reactivities between the orthogonal and endogenous aaRS/tRNA pairs



(A) Matching amino acid and aaRS/tRNA pairs; **(B)** mismatched amino acids; **(C)** mismatched aaRS/tRNA pairs.

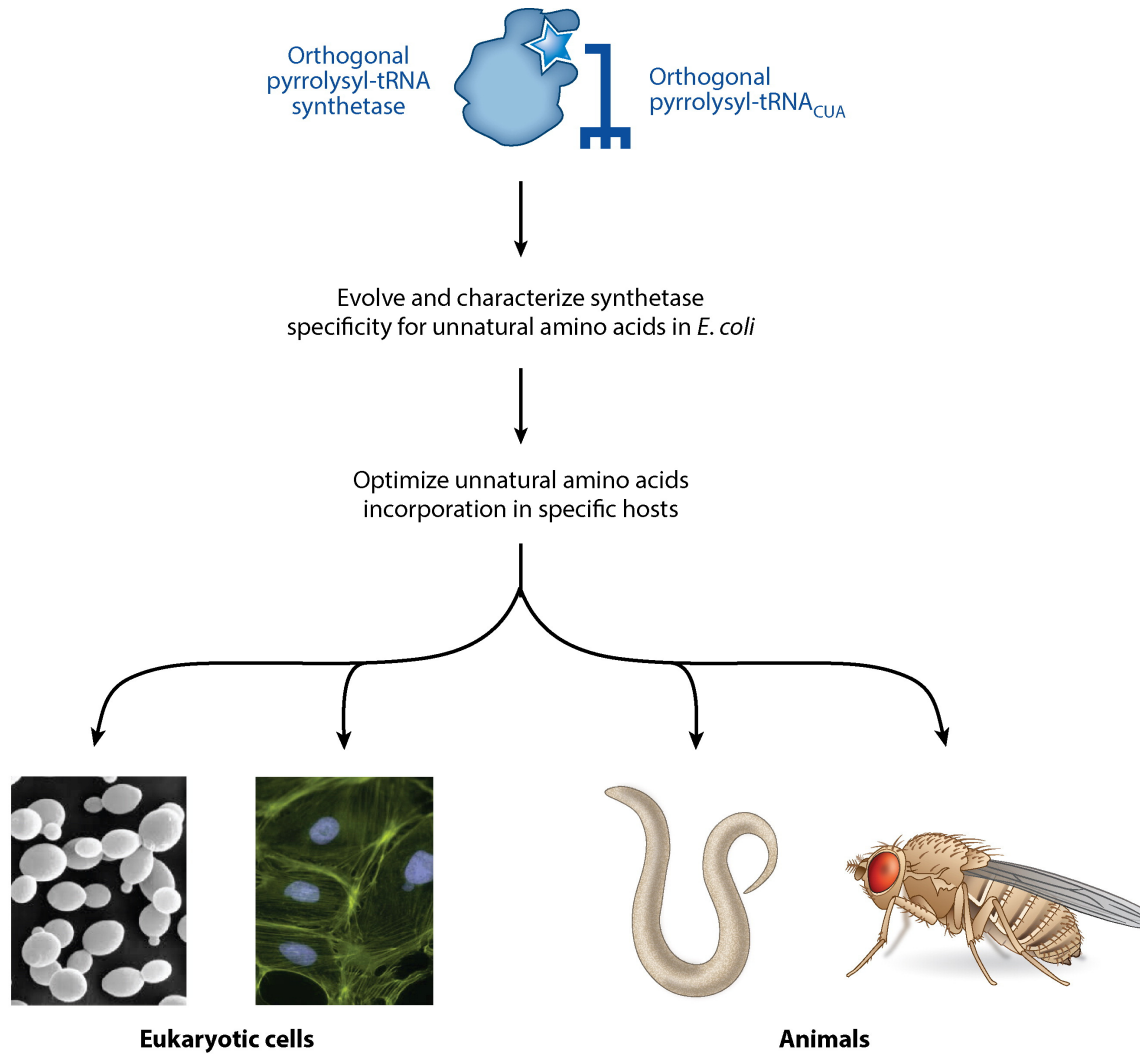
Example of the small-molecule approach to protein inhibition



- Use of unnatural amino acid incorporation for selective inhibition of protein function by bioorthogonal tethering
- In comparison with light-induced activation or inhibition, small molecules can be used to activate or inhibit the target protein in deep animal tissue or intact animals which are not easily accessible by light



Site-specific incorporation of NAAs into proteins





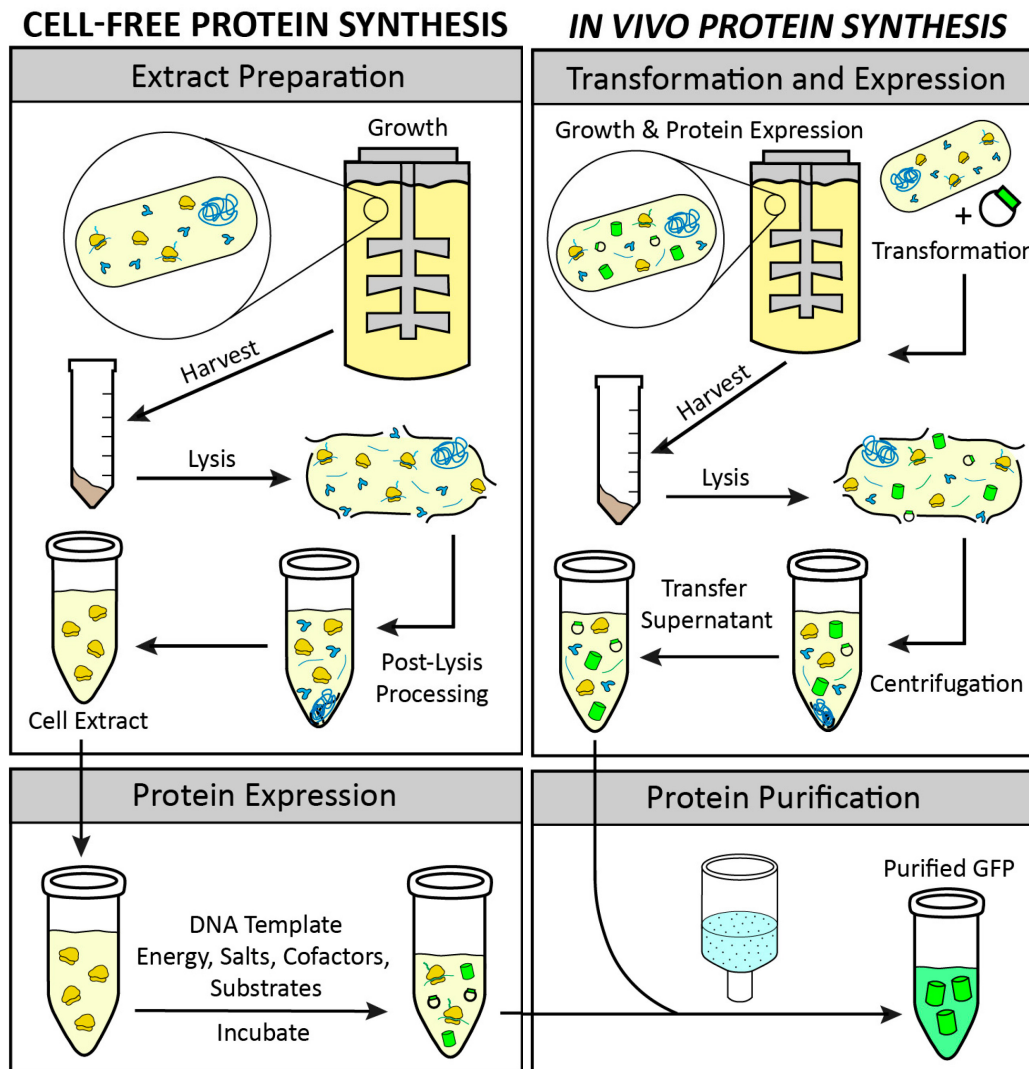
Cell-free protein synthesis (CFPS)

Concepts

Methods

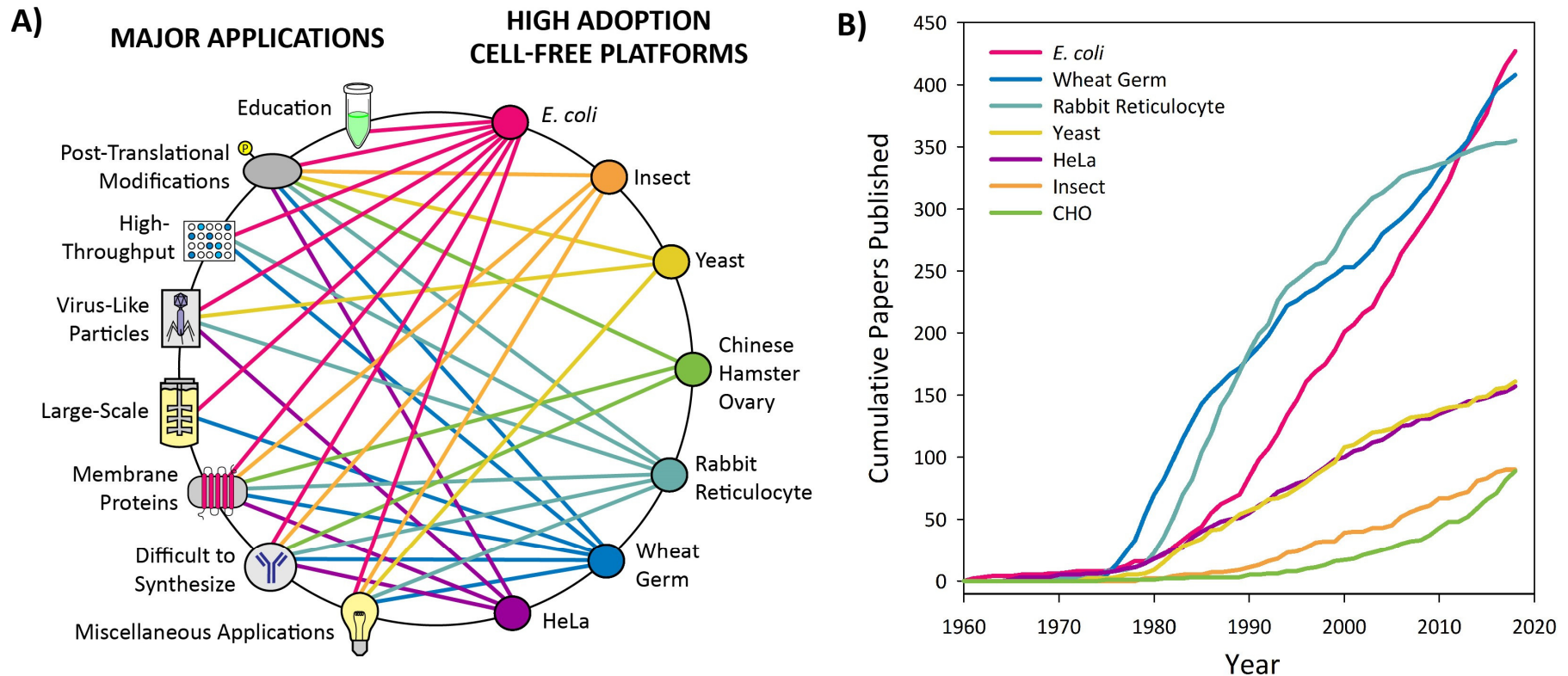
Applications

Cell-Free Protein Synthesis (CFPS)



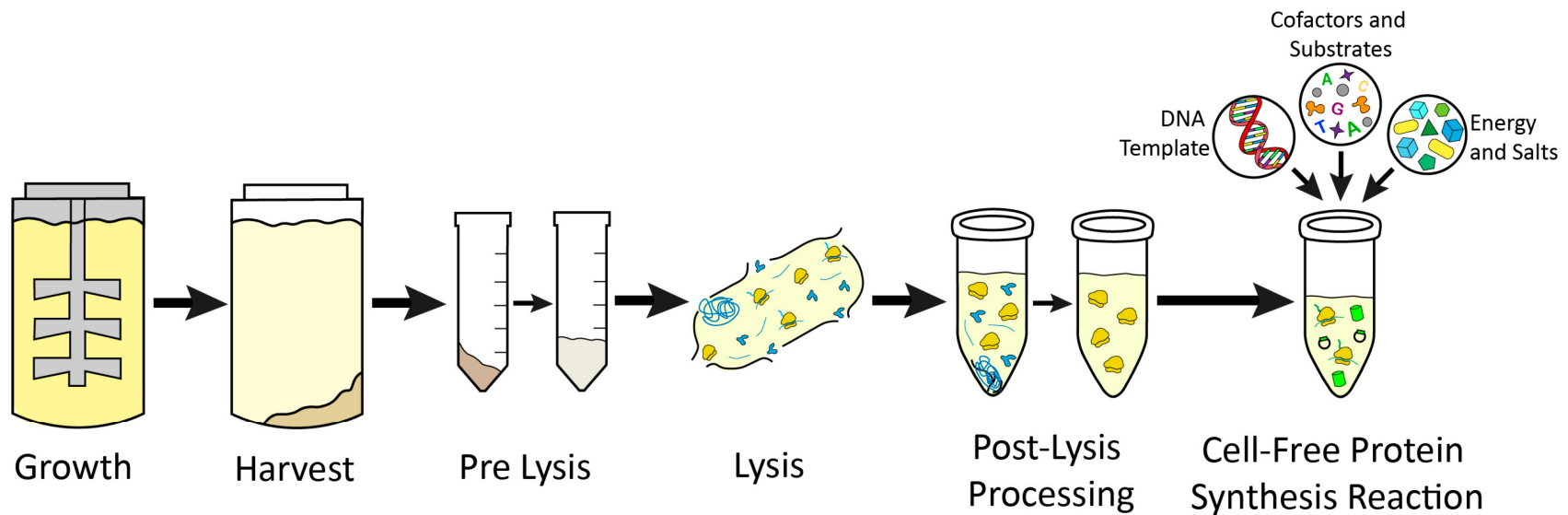
- Cell-free protein synthesis (CFPS) is a platform technology that provides new opportunities for protein expression
- The advantages of CFPS over in vivo protein expression include its open system, the elimination of reliance on living cells, and the ability to focus all system energy on production of the protein of interest

Cell-free platforms and their applications



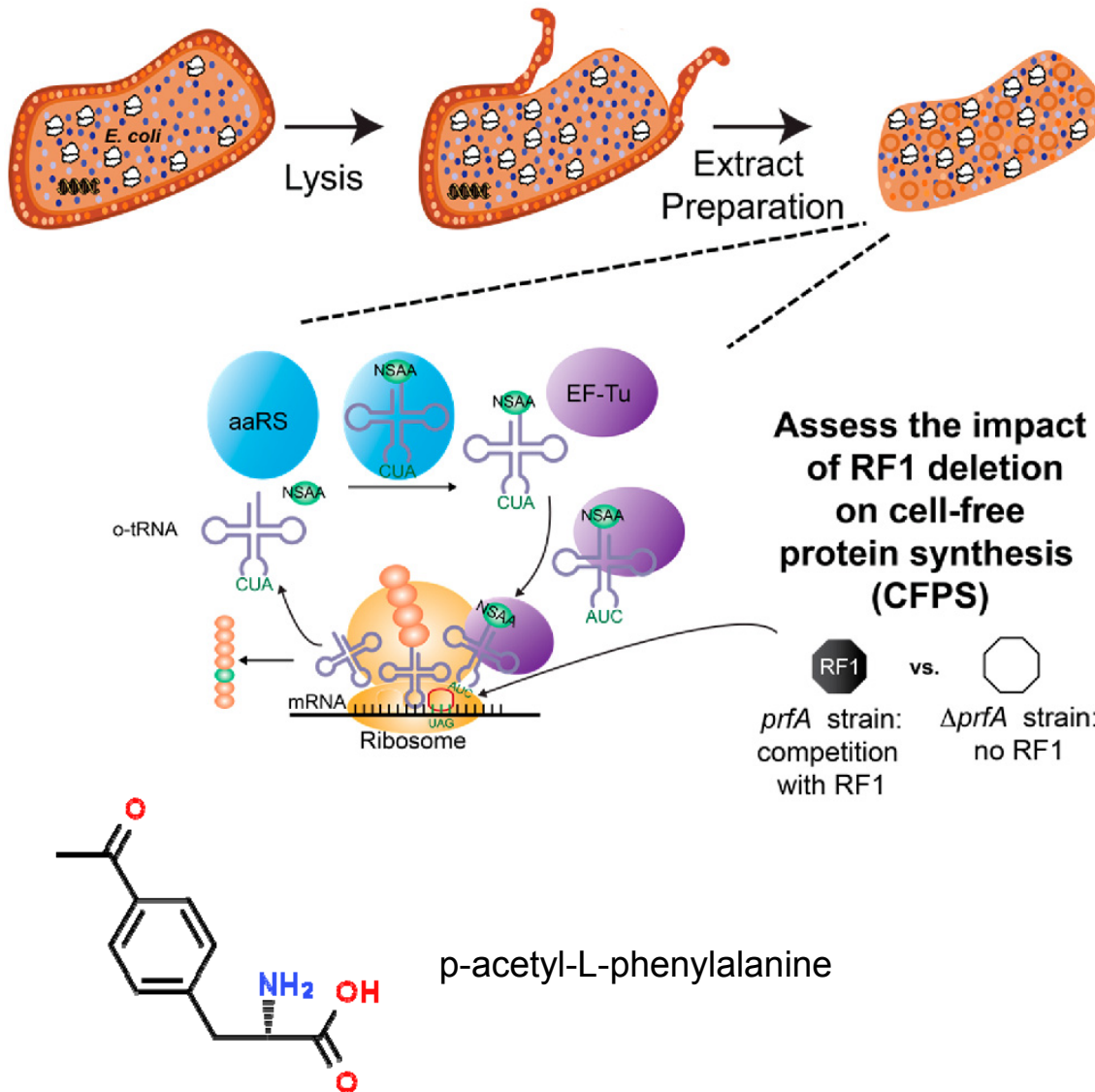
- (A) Web of the applications enabled by low adoption cell-free platforms. Connections shown are based on applications that have been published or that have been proposed in publications.
- (B) Cumulative number of peer-reviewed publications over the last 60 years for cell-free platforms.

Preparation of cell-free extract and set-up of CFPS reactions



General workflow for preparation of cell-free extract and set up of CFPS reactions. A visualization from cell growth to the CFPS reaction is depicted above for a new user, highlighting the main steps involved.

CFPS reaction incorporating nonstandard amino acids



- Scheme of cell-free protein synthesis reaction incorporating nonstandard amino acid to investigate the effect of RF1
- Cell extracts containing transcription and translation machinery are prepared from rEc.E13 or rEc.E13. $\Delta prfA$ strains
- Plasmid DNA template of sfGFP containing single or multiple **amber codon** sites, **orthogonal tRNA/aaRS**, NSAA, T7 RNA polymerase, and other cofactors are added as necessary to activate the cell-free protein synthesis (CFPS) reaction

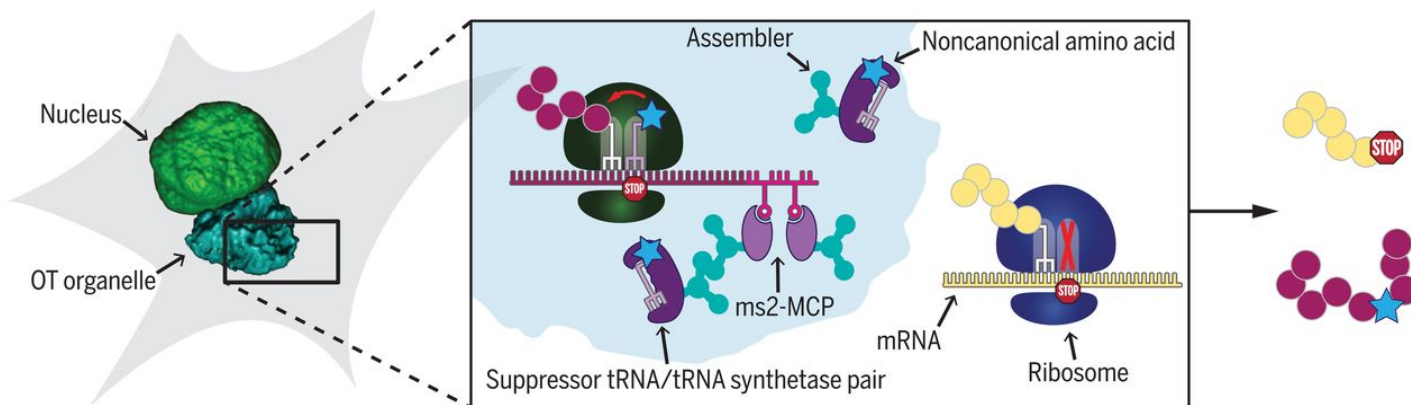
CFPS from extracts of a genomically recoded organism



- Schematic of the production and utilization of crude extract from genomically recoded organisms with plasmid overexpression of orthogonal translation components for cell-free protein synthesis
- CFPS reactions are supplemented with the necessary substrates (e.g., amino acids, NTPs, etc.) required for in vitro transcription and translation as well as purified orthogonal translation system (OTS) components to help increase the ncAA incorporation efficiency
- aaRS, aminoacyl tRNA synthetase; ncAA, non-canonical amino acid; T7P, T7 RNA polymerase; UAG, amber codon

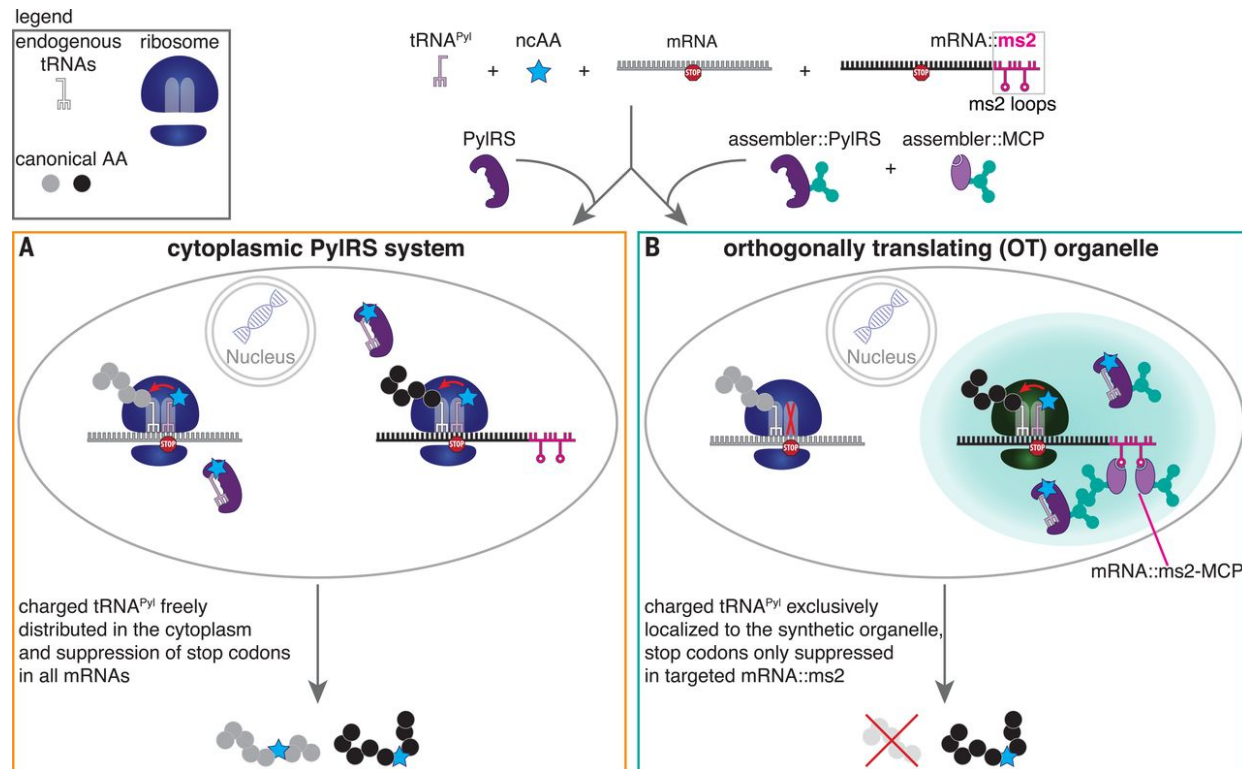
Genetic code expansion in eukaryotes

- Over last decades, discovery of macromolecular protein structures and complexes has played a major role in advancing a more systems-oriented view of protein interaction and signalling networks
- The design of biological systems often employs structural information or structure-based protein design to successfully implement synthetic signalling circuits or for rewiring signalling flows



Membraneless OT organelles enable mRNA-specific GCE in eukaryotes. OT organelles are designed organelles enriched in a suppressor tRNA/tRNA synthetase pair and a specific mRNA binding domain (MCP) by means of using an assembler protein (such as FUS and/or KIFs). A spatially distinct set of ribosomes associated with the OT organelle preferentially translates recruited mRNAs tagged with ms2 loops to yield the selected protein with the targeted site-specific noncanonical functionality.

Spatial separation of the key components for orthogonal translation to decode a specific stop codon in a specifically tagged mRNA



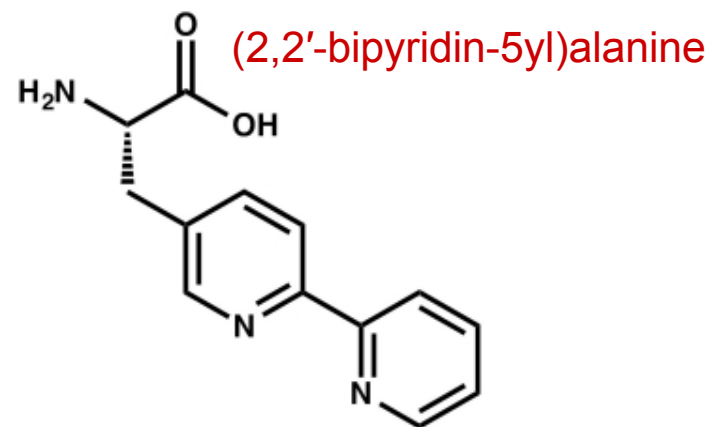
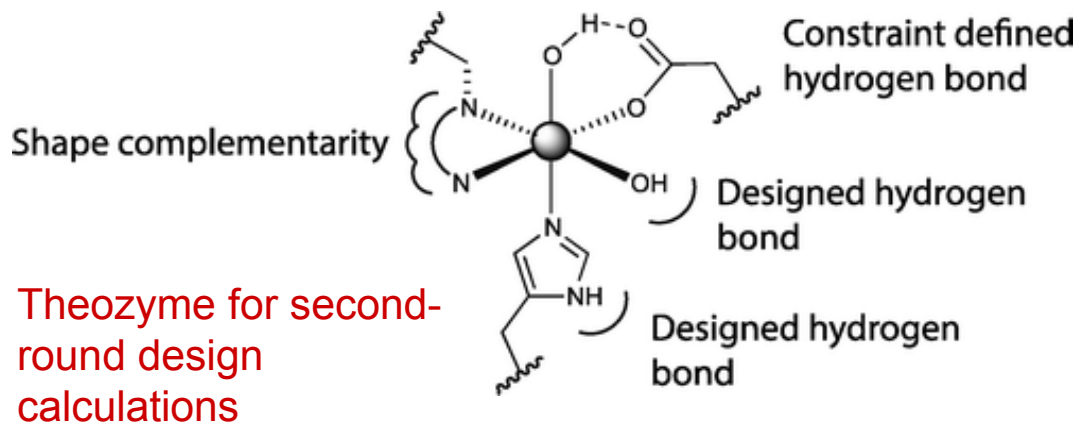
<https://science.sciencemag.org/content/363/6434/eaaw2644>

(A) Expression of the synthetase PylRS leads to aminoacylation of its cognate stop codon suppressor $tRNA^{Pyl}$ with a custom designed ncAA. This leads to site-specific ncAA incorporation whenever the respective stop codon occurs in the mRNA of the POI. Given that many endogenous mRNAs terminate on the same stop codon, using this approach in the cytoplasm potentially leads to misincorporation of the ncAA into unwanted proteins. **(B)** To avoid this, we propose to spatially enrich all components to an OT organelle, including the mRNA of the POI, the aminoacyl-tRNA synthetase, the tRNA, and ribosomes through the use of “assemblers.” Aminoacylated $tRNA^{Pyl}$ should only be available in direct proximity of the OT organelle, so that only here stop codon suppression can occur. The corresponding stop codon in mRNAs that are not targeted to the OT organelle should not get translated. **Whereas in (A) GCE is stop codon specific, in (B), it is stop codon- and mRNA-specific.**

A designed metalloprotein using an unnatural amino acid

An example of computational protein design II.

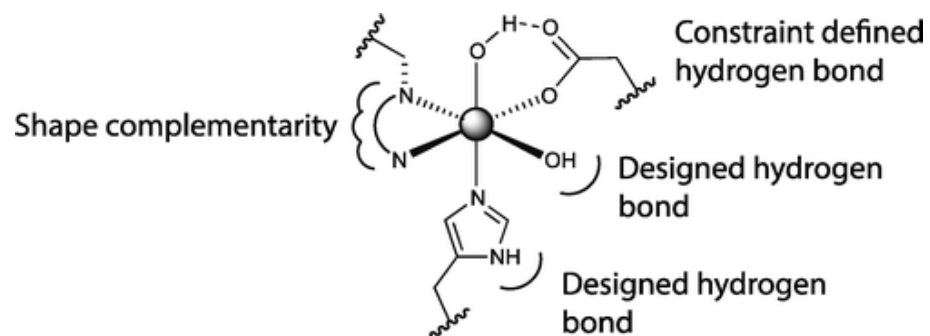
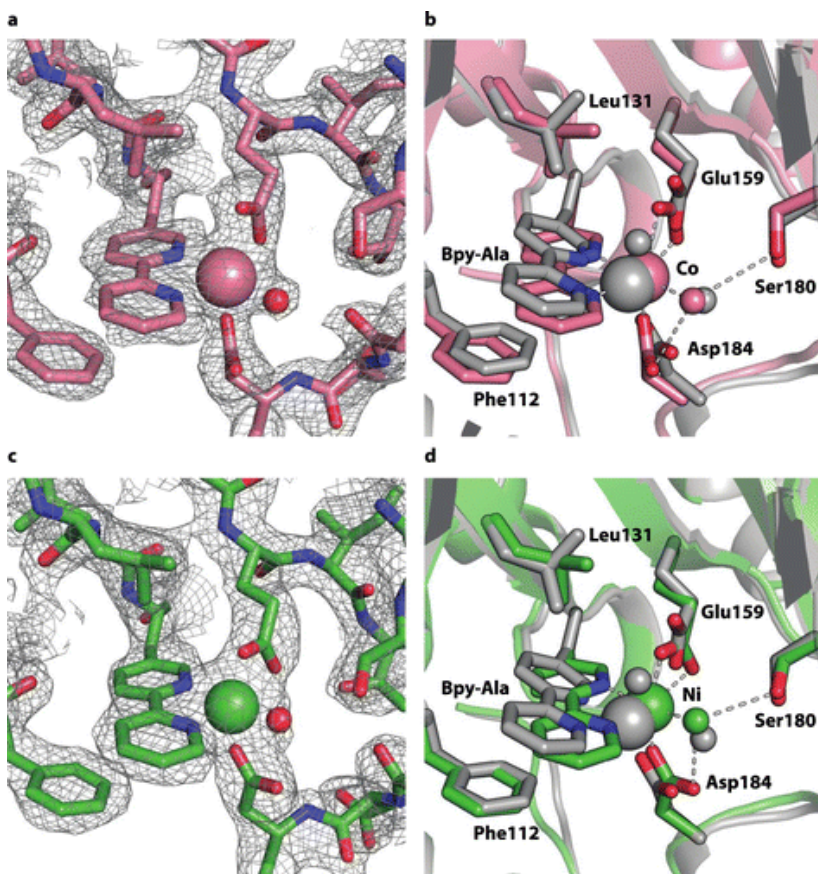
- Genetically encoded unnatural amino acids could facilitate the design of proteins and enzymes of novel function
- The Rosetta design was used to design metalloproteins in which the amino acid **(2,2'-bipyridin-5yl)alanine** (Bpy-Ala) is a primary ligand of a bound metal ion
- A buried metal binding site with octahedral coordination geometry consisting of Bpy-Ala, two protein-based metal ligands, and two metal-bound water molecules
- Experimental characterization revealed a Bpy-Ala-mediated metalloprotein with the ability to bind divalent cations including Co^{2+} , Zn^{2+} , Fe^{2+} , and Ni^{2+} , with a K_d for Zn^{2+} of ~ 40 pM



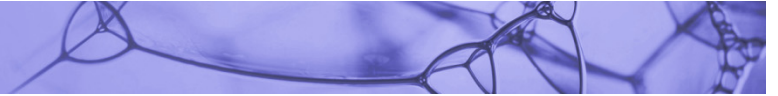
A designed metalloprotein using an unnatural amino acid

An example of computational protein design II.

- X-ray crystal structures of the designed protein bound to Co^{2+} and Ni^{2+} have RMSDs to the design model of 0.9 and 1.0 Å respectively over all atoms in the binding site.



X-ray crystallographic analysis of MB_07 bound to Co^{2+} and Ni^{2+} . Electron density from a $2F_o - F_c$ map in the vicinity of the Bpy-Ala bound to Co^{2+} (a) and Ni^{2+} (c) contoured at 1.0σ . Density for Bpy-Ala, Co^{2+} or Ni^{2+} (pink and green spheres, respectively), D184, E159, and a metal-bound water molecule (red spheres) is visible.



Optogenetics

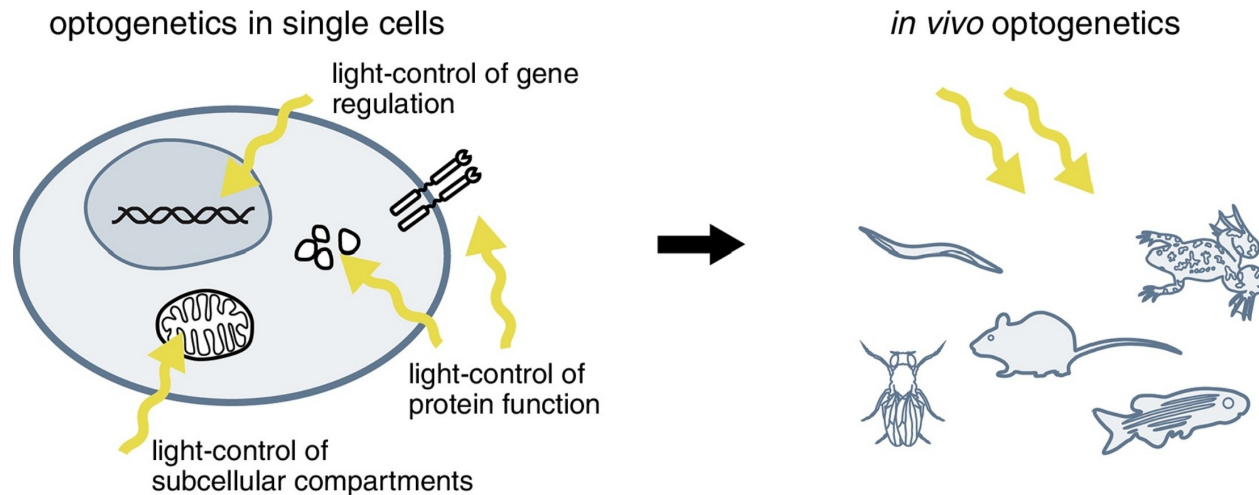
Concepts

Methods

Applications

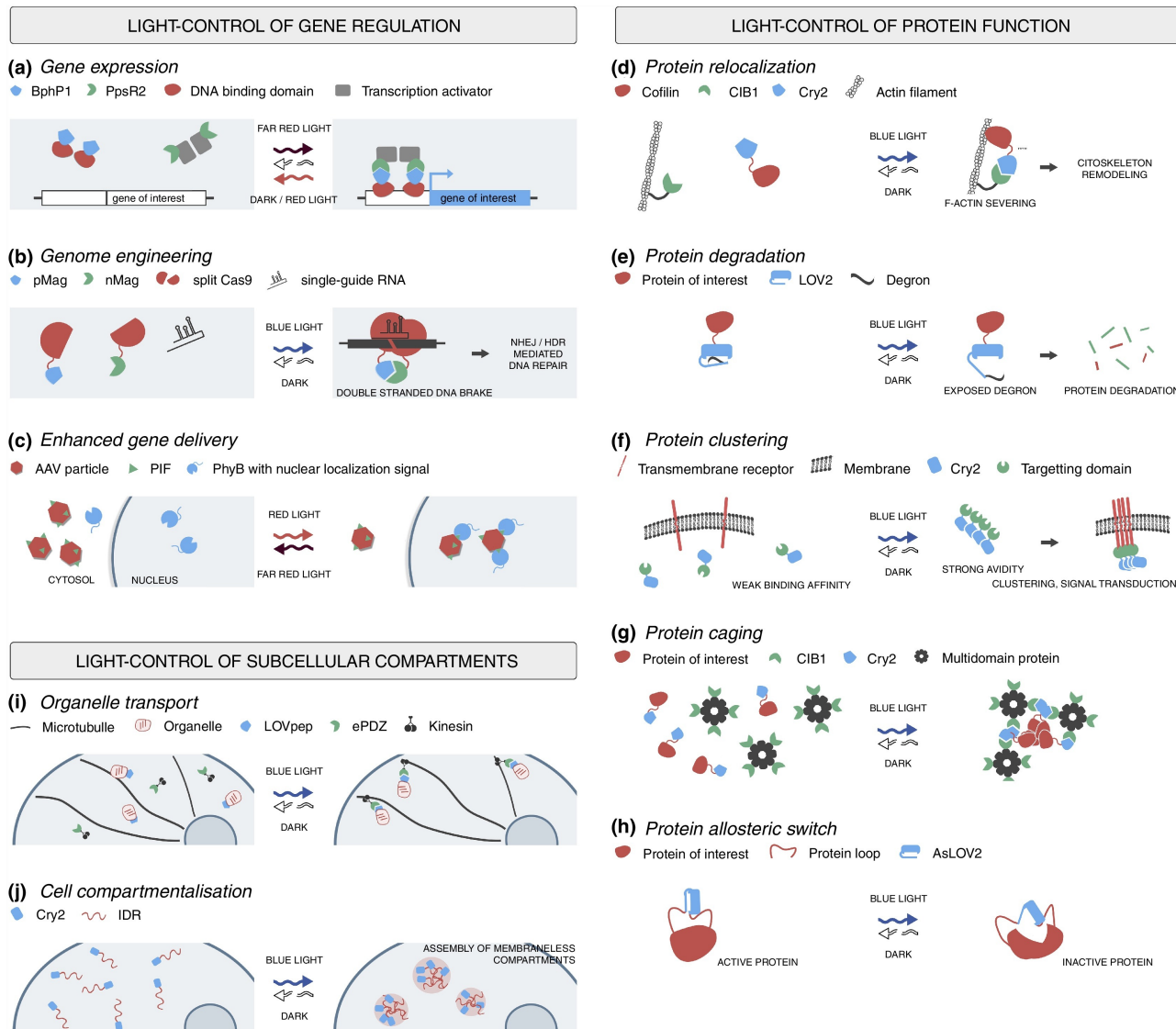
What is optogenetics?

- Optogenetics provides the ability to gain **light-control over genetically encoded cell components**, and thereby ultimately over signalling pathways or biological processes
- Contrary to chemically inducible systems, where spatiotemporal capabilities are limited by the diffusion and the half-life of inducing molecules, light provides an exquisite **precision of control** and thus opens unique possibilities to disentangle the principles that govern nature
- By delivering optical control at the speed (millisecond-scale) and with the precision (cell type–specific) required for biological processing, optogenetic approaches have opened **new landscapes for the study and engineering of biological systems**



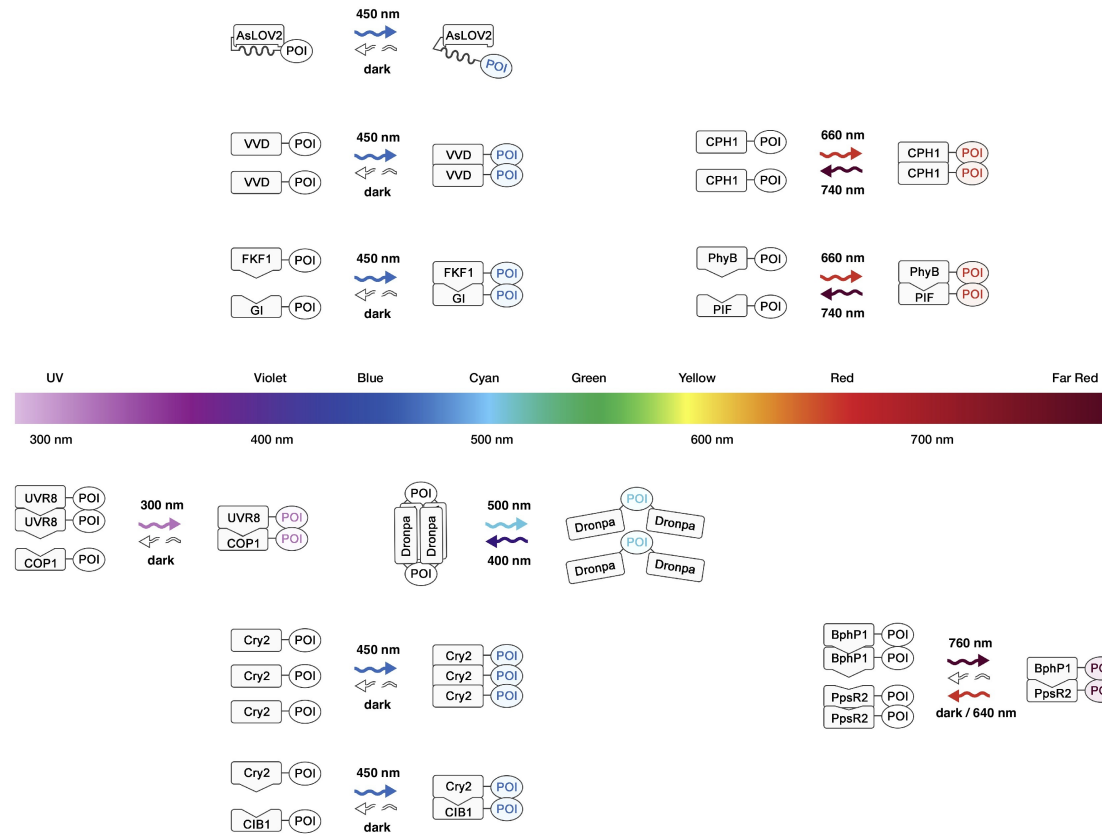


Optogenetic approaches to control gene regulation, protein function and subcellular compartments



https://doi.org/10.1016/j.copbio.2017.06.010

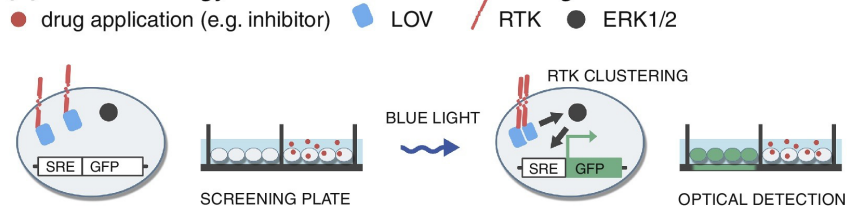
Toolbox of light-responsive modules



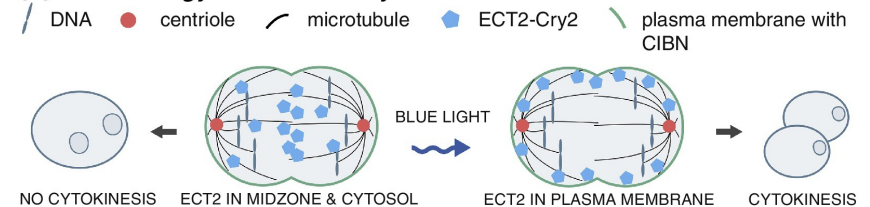
Optogenetic switch modules. AsLOV2, *Avena sativa* light-oxygen-voltage domain 2; BphP1, bacterial bathy phytochrome RpBphP1; CIB1, cryptochrome-interacting basic helix-loop-helix 1; COP1, constitutive photomorphogenesis protein 1; CPH1, cyanobacterial phytochrome 1; CRY2, cryptochrome 2; FKF1, Kelch repeat, F-box protein; GI, GIGANTEA; PHYB, phytochrome B; PIF, phytochrome interacting factor; POI, protein of interest; PpsR2, oxygen-responsive transcription regulator; UVR8, ultraviolet B receptor; VVD, vivid.

Examples of optogenetic applications

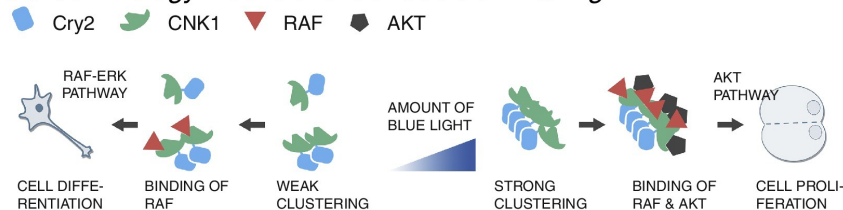
(a) Pharmacology - Small molecule screening



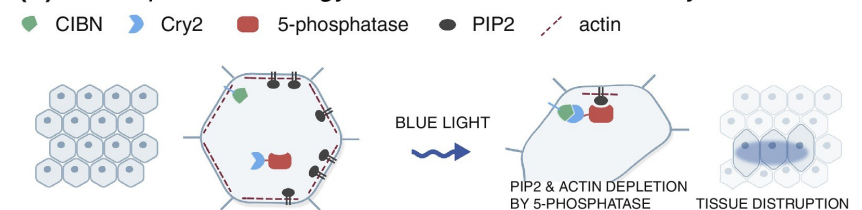
(c) Cell Biology - Control of cytokinesis



(b) Cell Biology - Control of cell decision making



(d) Developmental Biology - Control of cell contractility



- Light-controlled activation of a receptor tyrosine kinase (RTK) signaling pathway as a platform for optogenetics-assisted small-molecule screening
- Light-controlled CNK1 clustering reveals the protein's role as a molecular platform for cellular decision-making
- Light-controlled localization of Rho guanine exchange factor ECT2 as an optogenetic system to show that the protein's plasma membrane association during anaphase is necessary and sufficient for cytokinesis
- Light-controlled localization of 5-phosphatase OCRL as an optogenetic tool to control cell contractility during tissue morphogenesis

Legend: AKT, protein kinase B; CNK1, connector enhancer of KSR 1; ERK1/2, extracellular signal-regulated kinase; GFP, green fluorescent protein; RAF, rapidly accelerated fibrosarcoma kinase; SRE, serum response element



Optogenetics: conclusions

- Optogenetics uses light to control genetically encoded cell components
- It is a precise tool for systematically addressing complex biological questions
- It has a potential for applications in synthetic biology, medicine, pharmacology and elsewhere
- The latest optogenetic systems move from single cells to *in vivo* applications

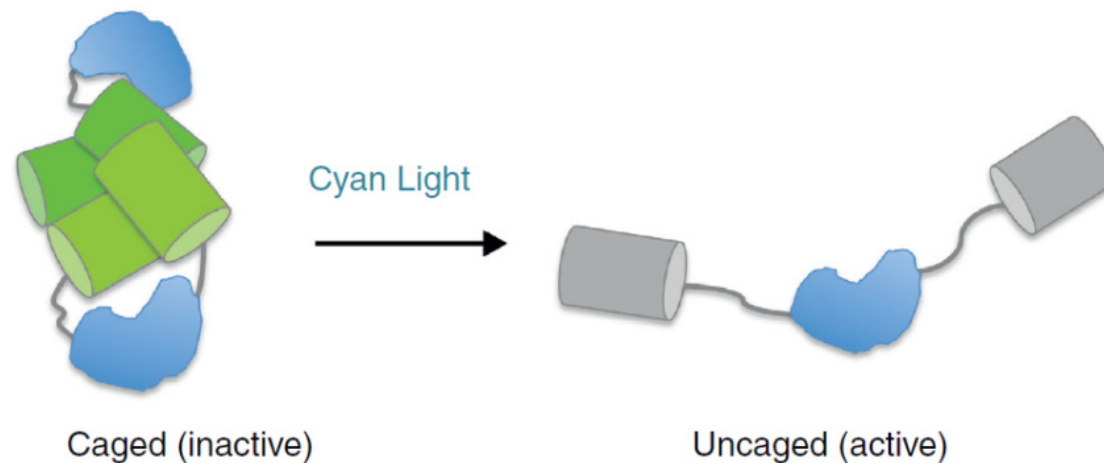
Photocaging in synthetic biology

Concepts
Methods
Applications

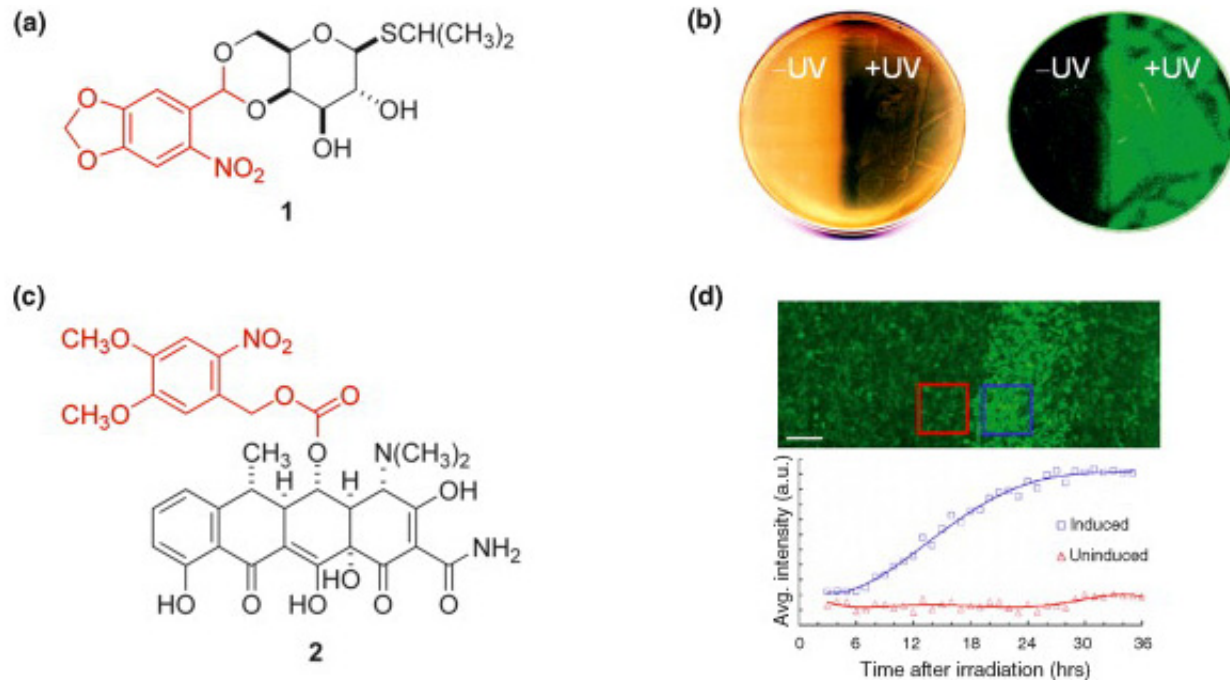


Photochemical control of protein function

- Biological processes are regulated with a high level of spatial and temporal resolution
- To understand and manipulate these processes, we need to be able to regulate them with Nature's level of precision
- In this context, light is a unique regulatory element because it can be precisely controlled in terms of location, timing and amplitude
- Moreover, most biological laboratories have a wide range of light sources as standard equipment

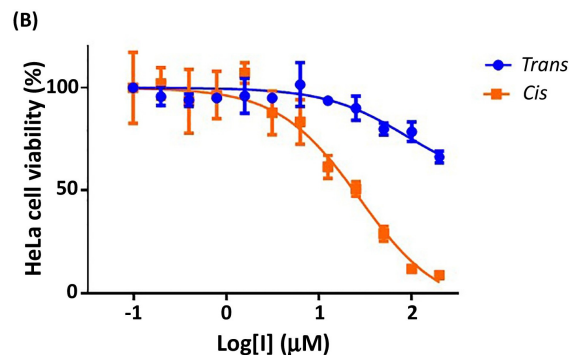
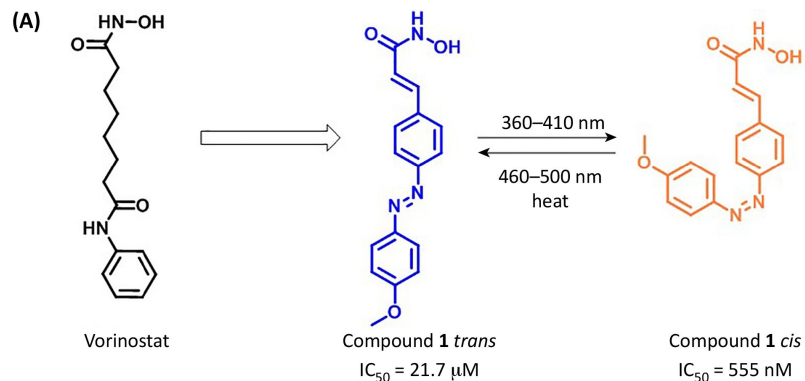
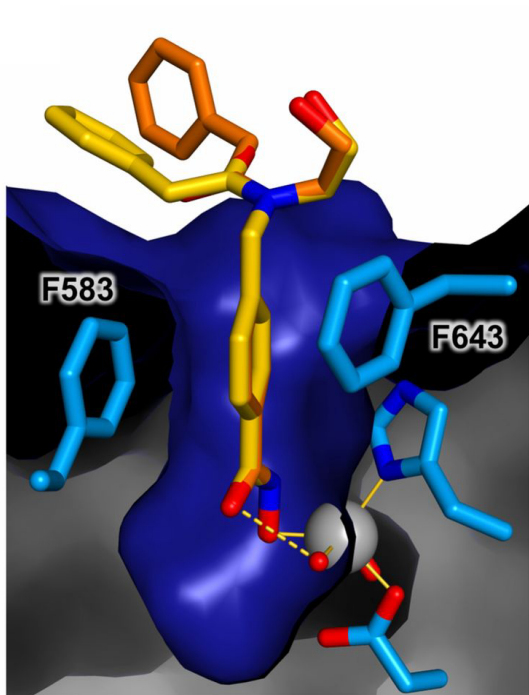


Photochemical regulation of gene expression



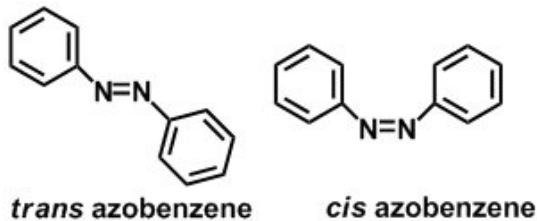
- (a) Light-activatable small-molecule inhibitors of gene expression repressor proteins. Caged IPTG **1**
- (b) Bacterial lithography experiment with **1** showing light-controlled induction and spatial control of β -galactosidase (left) and GFP (right) in a bacterial lawn (\varnothing 10 cm)
- (c) Caged doxycycline **2**
- (d) Spatial control of GFP expression using **2**, with irradiation through a 344- μ m photomask (scale bar 250 μ m); irradiated (blue) and non-irradiated (red) cells were quantified and fluorescence intensity is shown as a function of time. The light-removable caging groups are shown in red

Photochemical control over enzyme activity



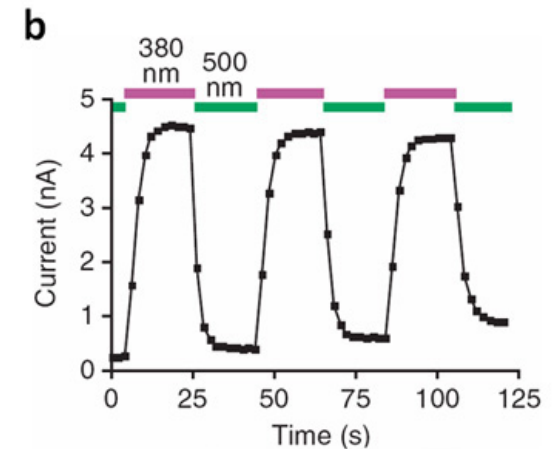
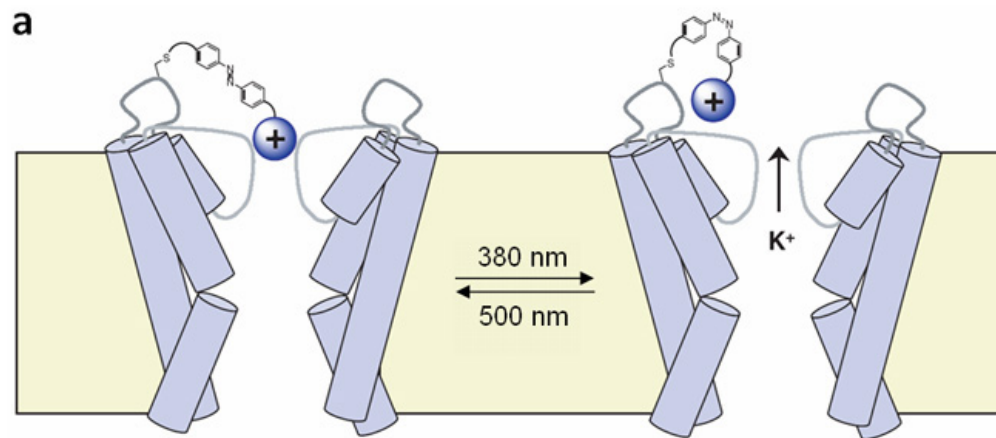
- (a) Photo-control over the activity of histone deacetylase 2 (HDAC2). Based on known HDAC2 inhibitor vorinostat, compound 1 was designed. Upon irradiation, compound 1 switches from *trans* to *cis* form, becoming 39-fold more active as an HDAC2 inhibitor.
- (b) Dose–response curve for compound 1 in *trans* (blue) and *cis* (orange) form on cell viability of HeLa cells.

Reversible photochemical activation of K⁺ ion channel



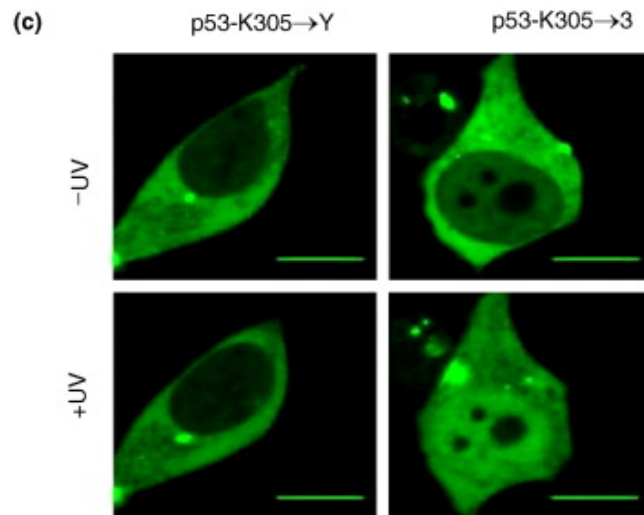
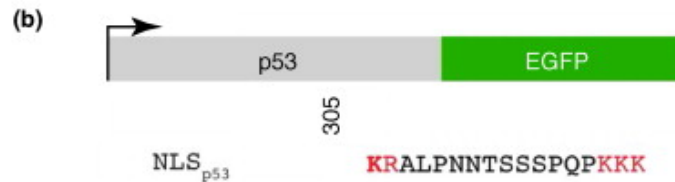
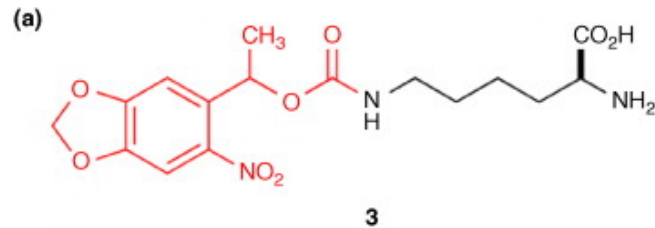
Three distinct features:

- a quaternary ammonium group
- a photo-isomerizable azobenzene group
- an electrophilic cysteine-reactive group (e.g. acrylamide, chloroacetamide, epoxide or maleimide)



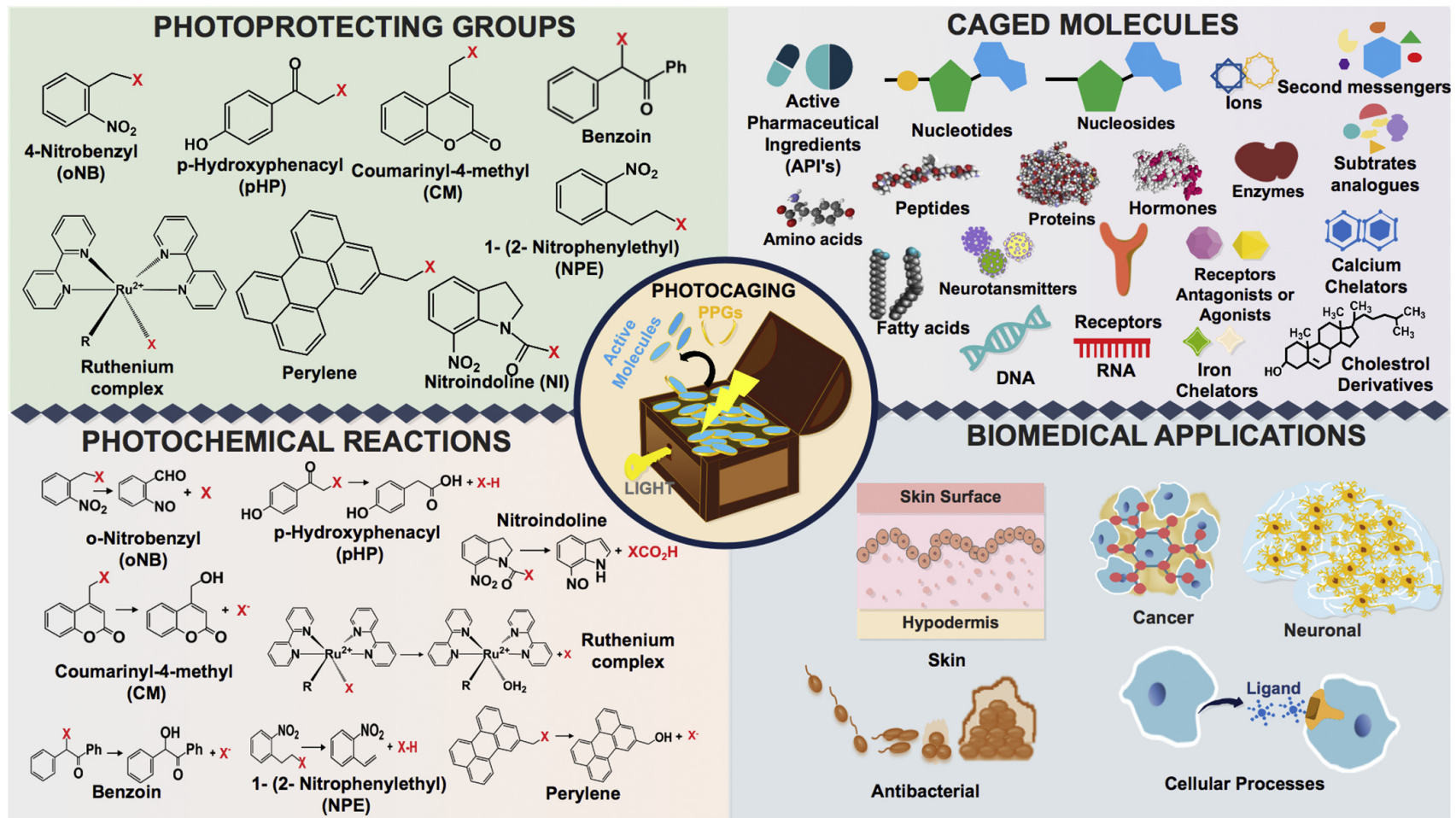
- (a) Schematic of PAL-gated K⁺ channel: The sphere labelled with a plus sign represents a quaternary ammonium group, which blocks the channel when the diazobenzene is in the *trans* conformation. Irradiation at 380 nm switches the diazobenzene from *trans* to *cis*, thus enabling K⁺ flow. Irradiation with 500 nm light reverses the switching event, thus blocking the ion channel.
- (b) Light-controlled membrane potential of a PAL-gated K⁺ channel measured in dependence of light irradiation.

Photochemical protein localization in cells

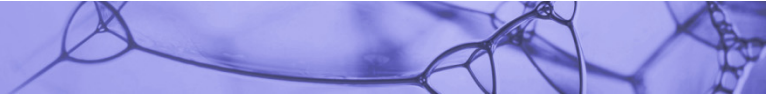


- (a) Genetically encoded caged lysine (light-removable caging group shown in red)
- (b) Gene diagram of *p53-egfp* with the crucial lysine K305 in bold
- (c) Nuclear import of EGFP in cells after introduction and photolysis of the caged lysine **3** introduced into position 305 in NLSp53. A mutation of K305 to tyrosine (K305→Y) blocks transport into the nucleus, regardless of light irradiation (left). Introduction of the caged lysine **3** at position 305 (K305→**3**) blocks transport of p53-EGFP, but facilitates translocation into the nucleus after brief light irradiation (365 nm, 5 s) (right). Scale bar, 10 μm.

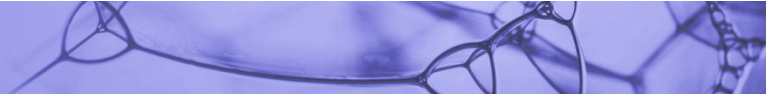
Overview of photocaging applications in biology



Representation of the photoprotecting groups, caged molecules, photochemical reactions behind the use of photocaging approaches in different biomedical applications.



Questions



Supplementary materials



<https://www.ncbi.nlm.nih.gov/pmc/articles/PMC4090895/>
<https://pubs.acs.org/doi/10.1021/sb300094q>



Structure-based engineering and design of parts

Registry of Standard Biological Parts

iGEM 2019 Begins!

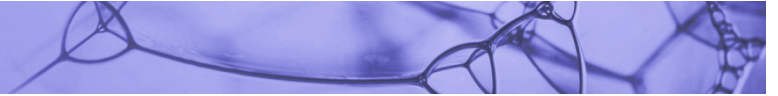
Add and Document Parts
Start **adding and documenting** your parts now! Your parts should be well characterized and measured, and follow the Registry's requirements.

Sample Submissions
iGEM teams do not need to send samples of their parts **this year**. We want teams to focus on the documentation of their parts! Teams must follow 2019 requirements for parts, including **BioBrick RFC10** or **Type IIS compatibility**.

Registry Updates
The Registry will be undergoing updates (some major, some minor) over the next few months. If you notice any issues with functionality, please let us know at hq@igem.org.

Featured Part
Metal Binding and Sensing Parts
Every year, a number of iGEM teams complete a variety of biosensors and bioremediation projects that involve metal-binding and metal-sensing. Their focus may be on several pollutants or just one. iGEM teams have worked with metals like nickel, mercury, lead, arsenic, copper, amongst others.
We've put together a collection of projects and DNA parts that are responsible for both metal binding and metal sensing.

- Until now, structural biology has been mainly used in synthetic biology approaches to design new parts/components and tools
- Many of the characterized components can be found in the Registry of Standard Biological Parts (<http://partsregistry.org/>)
- Of special importance is the recently developed “**SYNZIP protein toolbox**” because it contains a complete biophysical quantitative description (i.e., affinities) of synthetic domains



Genetic circuits for signal processing

Genetic circuits are commonly built by synthetic biologists to enable cells to take some input and compute what to do. Beyond a cell being activated by a single input, cells could be engineered to respond to multiple signals and to make decisions based on both its neighbouring cells and environment.

One published example of mammalian genetic circuits is 'Boolean logic and arithmetic through DNA excision' (BLADE) and it was able to build 113 different circuits in embryonic kidney and Jurkat T cells. The BLADE system uses recombinases to create logic gates but can also interface with CRISPR–Cas9 to regulate host cell genes. Large circuits like the ones demonstrated with BLADE could be combined with synthetic receptors so cells can make decisions based on what combination of signals they see.

Receptor engineering

New types of receptors can be engineered to detect different types of molecules and turn on some cellular output function. The more receptors that can be readily engineered the more molecules that can be used as inputs to a therapeutic cell. It has been shown that synthetic notch receptors can be made for use with different recognition domains as well as different transcription factors as activation domains. That means that a researcher can decide both what the receptor responds to and what it turns on after it binds its target. Typical CAR-Ts only change the input of the receptor, but this kind of receptor can swap out either the input or output or both. Having several independent receptors would allow much more complex programming of therapeutic cells to respond to signals within the human body.

Safety kill switch

Since toxicity can be an issue, it would be good to have an off switch in the event of a problem. One form of toxicity that can happen with CAR-T is called “Cytokine Release Syndrome” or “Cytokine Storm” for especially severe cases. This can happen when the immune system has such a strong response that many inflammatory cytokines are released triggering mild to severe symptoms including fever, headache, rash, rapid heartbeat, low blood pressure, and trouble breathing.

Synthetic biologists have already worked on a number of “kill switches” in different organisms. A kill switch could be applied to CAR-T by having a drug-inducible kill-switch in the the T-cells that would give the medical team a way to kill off the modified cells as soon as a bad side effect starts to show up. Researchers and companies are also seeking multiple ways to either switch off or kill the T-cells when they’re not needed. These variations on a kill switch can help to make sure CAR-T cell therapy has extra safety measures in place.

There are many types of cancer and many ways in which a cancer can avoid successful treatment. Hopefully mammalian synthetic biology can add something to the immunotherapy toolkit by improving CAR-T or other approaches to enlist the immune against cancer.



nature
International journal of science

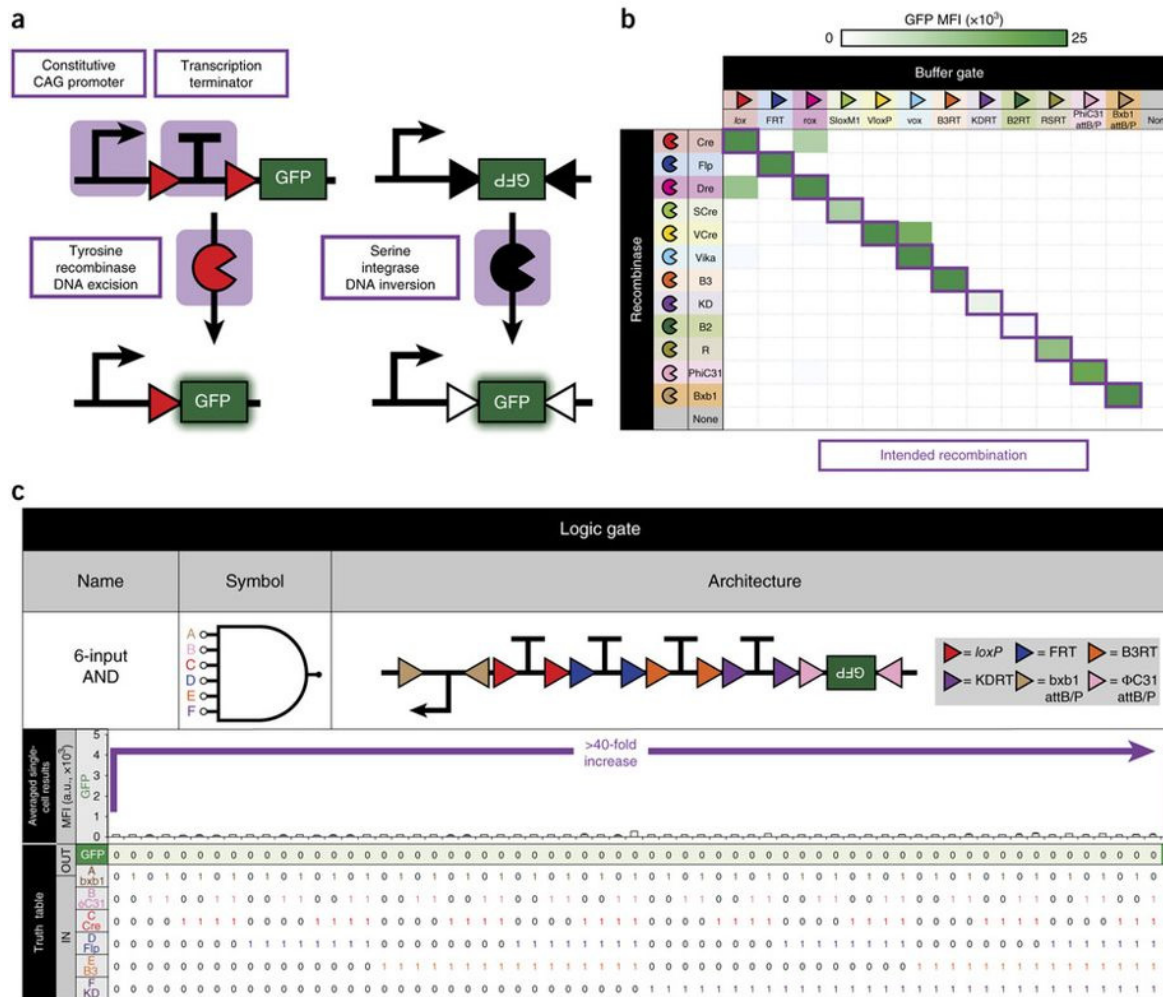
Article | Published: 15 May 2019

Total synthesis of *Escherichia coli* with a recoded genome

Julius Fredens, Kaihang Wang, Daniel de la Torre, Louise F. H. Funke, Wesley E. Robertson, Yonka Christova, Tionsun Chia, Wolfgang H. Schmied, Daniel L. Dunkelmann, Václav Beránek, Chayasith Uttamapinant, Andres Gonzalez Llamazares, Thomas S. Elliott & Jason W. Chin 

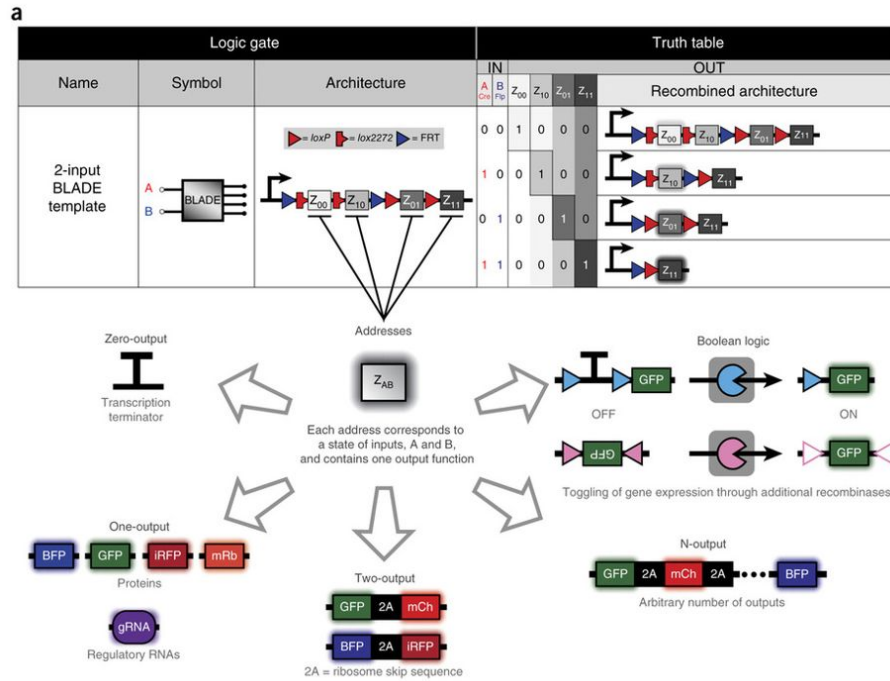
Nature 569, 514–518 (2019) | [Download Citation](#) 

Implementation of multi-input gates in mammalian cells

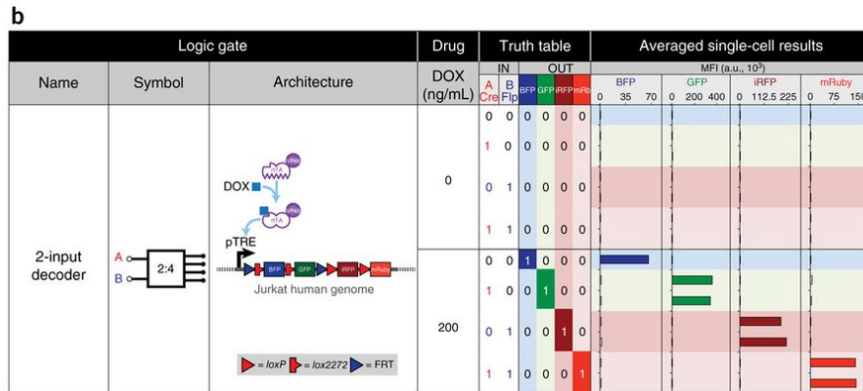


- (a) Recombinases can perform simple BUF logic operations, either by tyrosine-recombinase-mediated excision (left) or serine-integrase-mediated inversion (right).
- (b) Recombinases are tested for their recombination efficiency and orthogonality on all BUF logic reporters.
- (c) A 6-input AND-gate that produces GFP when all inputs are present. MFI, mean fluorescence intensity from $n = 3$ transfected cell cultures; a.u., arbitrary units. Error bars, s.e.m.

Four distinct output functions based on two inputs



(a) 2-input BLADE template on one plasmid with a single transcriptional unit. This template contains four distinct regions of DNA (addresses) downstream of a promoter. Each address corresponds to an output function and is accessed or deleted via site-specific DNA recombination. Each address can be programmed from different configurations ranging from zero-inputs to Boolean functions. The first address (Z00), which is the closest to the promoter, corresponds to a state where no recombinase is expressed (A = 0, B = 0). If the Z00 address contains a protein coding sequence, then that gene will be expressed. Gene expression from the other addresses downstream of Z00 will be blocked by the presence of the Z00 protein coding region. In the presence of recombinase A, which corresponds to state (A = 1, B = 0), addresses Z00 and Z01 will be removed, thus moving address Z10 directly downstream of the promoter and allowing gene expression of address Z10 only to occur. Similarly, when only recombinase B is present (A = 0, B = 1), addresses Z00 and Z10 are excised, allowing Z01 to be moved directly downstream of the promoter. Finally, when both recombinases are expressed (A = 1, B = 1), addresses Z00, Z01, Z10 are all excised, thus placing Z11 downstream of the promoter unobstructed by the other addresses.



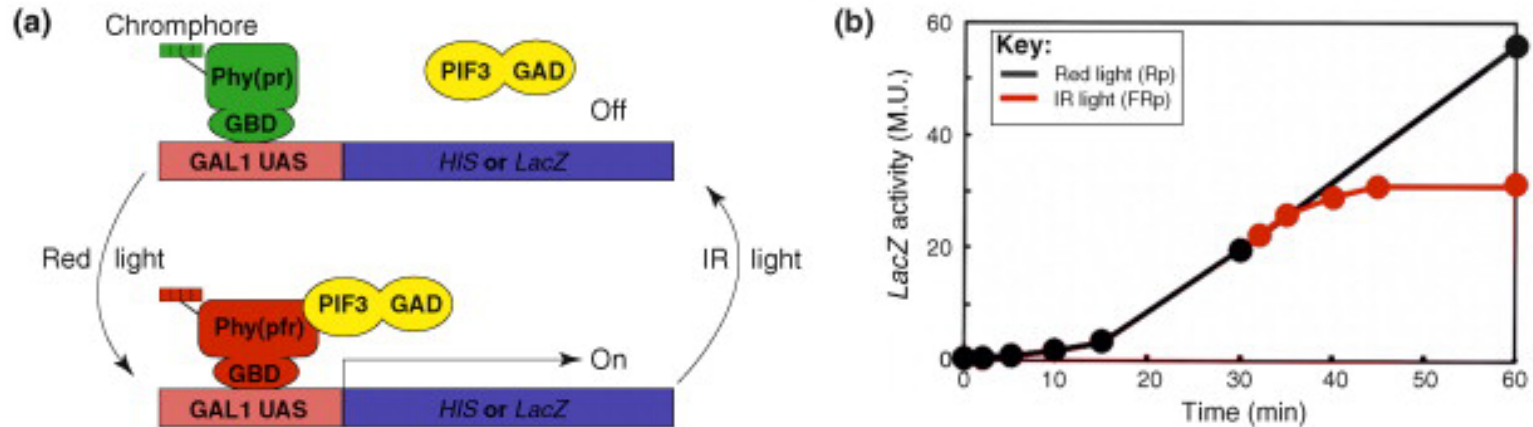
(a) Integrated 2-input BLADE decoder with tagBFP, EGFP, iRFP720, and mRuby2 as addresses Z00, Z10, Z01, and Z11 respectively. Plasmids constitutively expressing Cre and/or Flp are then stably integrated. Three days of doxycycline (DOX) treatment is used to permit the rtTA-VP48 protein to bind to the tetracycline response elements promoter (pTRE) to activate gene expression. Mean fluorescence intensity (MFI) is plotted of either $n = 1$ or $n = 2$ independent integrations. a.u., arbitrary units.



- Koukni na toto

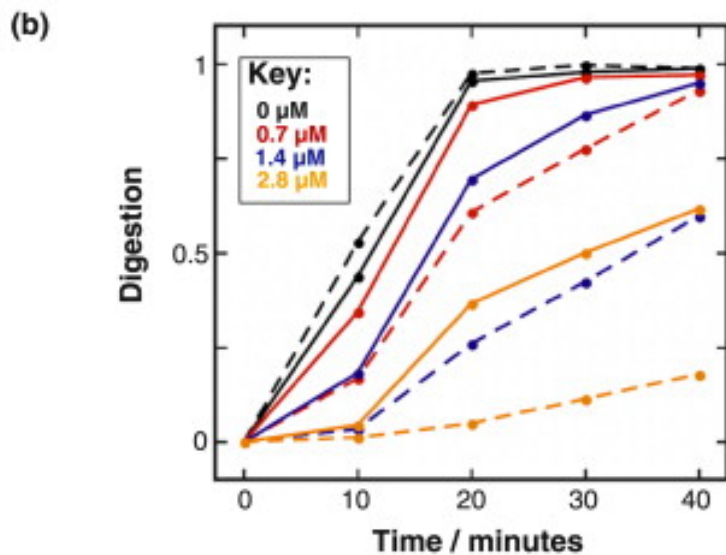
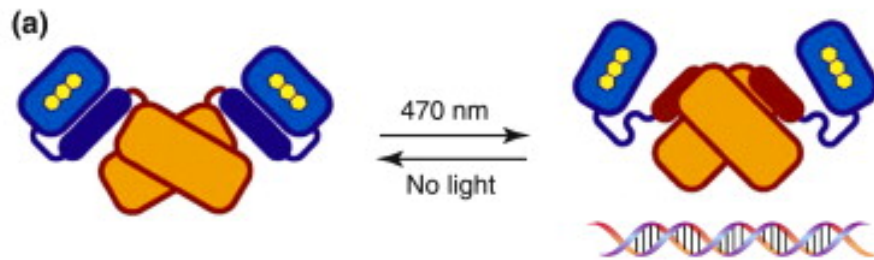
The screenshot shows a web browser window displaying a Nature Chemical Biology article. The browser's address bar shows the URL <https://www.nature.com/articles/s41589-019-0210-5>. The page features a dark blue header with the journal title 'nature chemical biology' and a navigation menu. The article title is 'Protein circuits reprogram cells' by Yiqian Wu & Yingxiao Wang, published on 07 January 2019. The abstract states: 'Two protein circuit systems, split-protease-cleavable orthogonal coiled-coil logic (SPOC logic) and circuits of hacked orthogonal modular proteases (CHOMP), have been developed to permit rapid and logic function-based control of mammalian cellular signaling.' The page also includes 'Access options' for renting or buying the article or subscribing to the journal. The browser's taskbar at the bottom shows several open applications, including Total Commander, Protein circuits repro..., Synthetic-Proteins-1, and From-proteins-to-nan...

Light-regulated protein-protein interactions



- (a) Light-controlled expression of *lacZ* via PhyB–PIF protein interaction. Schematic of the light-controlled transcriptional activator. Phytochrome (Phy), which is fused to the DNA-binding region of GAL4 (GBD), reversibly binds to PIF. PIF is fused to the transcriptional activating domain of GAL4 (GAD), thus activating gene expression on exposure to red light and deactivating it by dissociation on exposure to IR light.
- (b) *LacZ* (β -galactosidase) activity induced with a pulse of red light (Rp, black line), and arrested with pulses of far-red light (FRp, red line), thus showing that the system is reversible and can be used to control *lacZ* expression.

Genetically encoded photoresponsive protein domains

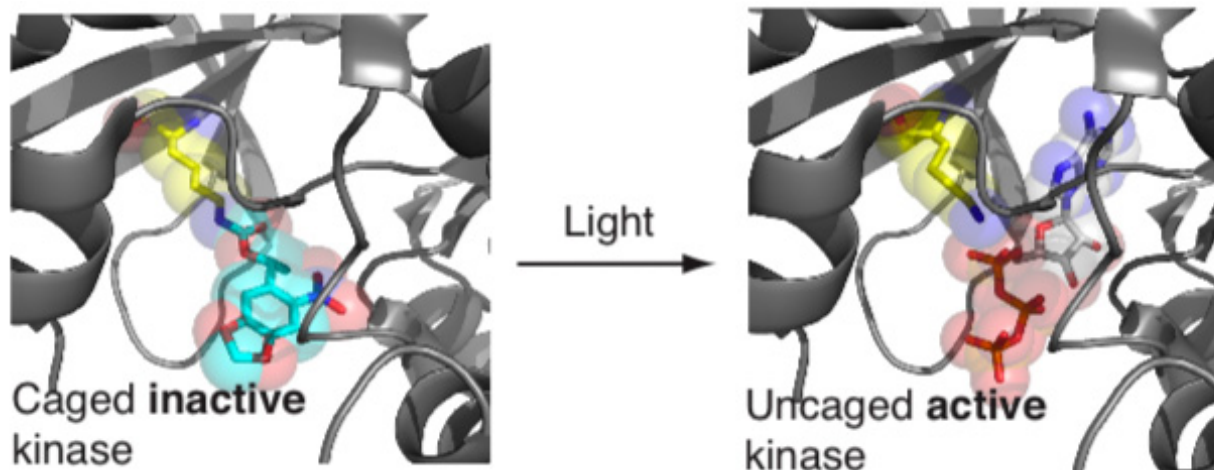


(a) Mechanism of LovTAP, a reversibly switchable DNA-binding protein. Before exposure to blue light, $J\alpha$ (dark blue) is associated with the LOV domain (light blue), which renders the Trp repressor region (light orange) inactive. After irradiation with blue light (470 nm) a conformational change occurs and $J\alpha$ (now dark orange) dissociates from the LOV domain, in turn activating the Trp repressor. The active protein binds to DNA at a *lac* operator region. The original conformation of the protein is slowly (tens of seconds) reassumed after incubation in the dark and the Trp repressor region dissociates from the DNA, thus making the activity of LovTAP reversible.

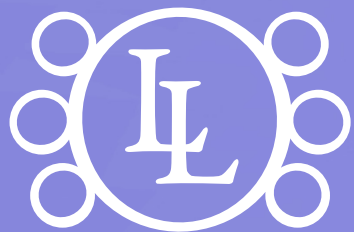
(b) LovTAP protects DNA against RsaI digestion at the *lac* operator site. An increase in the concentration of LovTAP decreases digestion, as does irradiation with blue light (dashed lines, irradiated; solid lines, non-irradiated).

Light-induced activation or inhibition (photocaging)

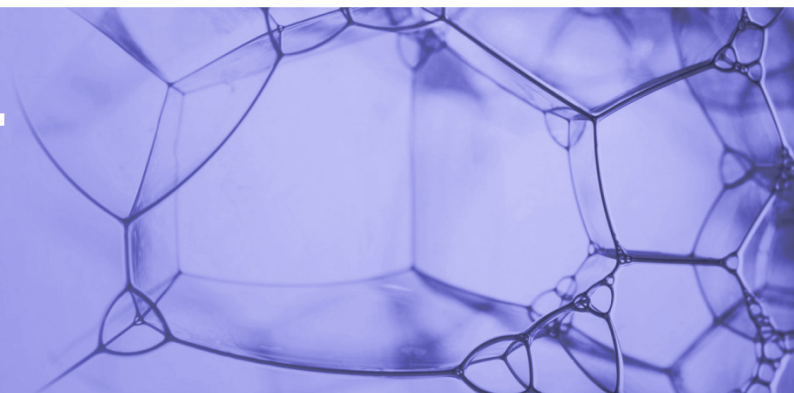
- Use of light to unmask or modify unnatural amino acids and subsequently regulate protein function
- Depending on the nature of the light-responsive group, it is possible to either activate, inhibit, or reversibly switch on/off protein function
- Unnatural amino acids containing a **photocage** (i.e. a photolabile protecting group) have been widely used for protein activation
- When replacing a functionally critical amino acid residue with the corresponding photocaged amino acid, the target protein becomes inactive; upon light irradiation, the photocage is removed, thereby restoring the protein's function



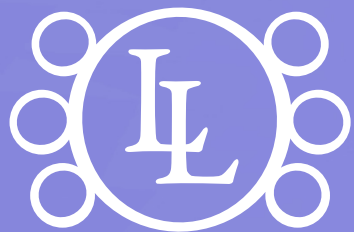
Dr. Martin Marek
Loschmidt Laboratories
Faculty of Science, MUNI
Kamenice 5, bld. A13, room 332
martin.marek@recetox.muni.cz



LOSCHMIDT
LABORATORIES



Dr. Martin Marek
Loschmidt Laboratories
Faculty of Science, MUNI
Kamenice 5, bld. A13, room 332
martin.marek@recetox.muni.cz



LOSCHMIDT
LABORATORIES

