

A GIS-Based Multicriteria Decision Analysis Approach for Mapping Accessibility Patterns of Housing Development Sites: A Case Study in Canmore, Alberta

Yunliang Meng¹, Jacek Malczewski², Soheil Boroushaki³

¹*School of Social Work, York University, Toronto, Ontario, Canada*

^{2,3}*Department of Geography, The University of Western Ontario, London, Ontario, Canada*

E-mail: yunliang@yorku.ca, jmalczew@uwo.ca, sboroush@uwo.ca

Received August 31, 2010; revised September 31, 2010; accepted November 19, 2010

Abstract

This paper presents a Geographic Information System (GIS) based multicriteria decision analysis approach for mapping accessibility patterns of housing development sites in Canmore, Alberta. The approach involves integrating two multicriteria decision methods (Analytical Hierarchy Process and Ordered Weighted Averaging) in a raster GIS environment, and incorporating the linguistic quantifier concept as a method for obtaining the order weights. The approach facilitates a wide range of location (decision) strategies to be generated and examined. The aim of the study is to help the housing development authorities in addressing the uncertainty involved in the decision making process, achieving a better understanding of the alternative accessibility patterns. It also assists the authorities in evaluating and prioritizing the potential housing development sites in terms of accessibility levels.

Keywords: Accessibility, AHP-OWA Procedures, GIS, Housing Development

1. Introduction

The accessibility to services, facilities and amenities is an essential factor affecting evaluation of potential sites for housing development [1,2]. In many regions, urban plans ensure that individuals have some minimal levels of accessibility to the public sector facilities, such as schools, emergency services, and recreation amenities. At the same time, an essential element of location strategy for housing development is to avoid proximity to noxious facilities (e.g., waste disposal sites, gas depots, and chemical factories).

It is noted that the results of accessibility evaluation depend on the definition of accessibility [3,4]. In this paper, we adopt a definition proposed by Dalvi, who defines accessibility as “the ease with which any land-use activity can be reached from a particular location, using a particular transportation system” [5]. The concept of accessibility can be operationalized in terms of the average and maximum distance [6-8]. The two methods of measuring accessibility originate from a normative perspective on location analysis, in which the most often used objectives are: 1) to maximize the geo-

graphical efficiency (or minimize total travel cost for customers), and 2) to maximize the geographical equity (or to minimize travel cost for the farthest customers). The accessibility to public and private sector facilities has often been analyzed using GIS-based approaches [4, 9-12].

This paper focuses on measuring of accessibility in terms of the spatial distributions of salutary facilities (e.g., the supply facilities such as hospitals, fire stations, and schools) and noxious facilities (e.g., gas tanks and heliport) relative to the locations of demand (the potential housing development sites). The average and maximum distance methods are employed to explore the trade-off between geographical efficiency and equity [6-8]. The average distance method measures the average distance that residents living in a particular neighbourhood have to travel to be served. The measure is primarily concerned with the efficiency of spatial distribution of facilities. The larger is the average distance to a facility, the lower is the accessibility level to the facility. The maximum distance method measures the distance that neighbourhood residents have to reach the farthest facility of interest. This approach attempts to minimize the

longest travel distance to a facility in a given area. The maximum distance method mainly addresses the issue of equity in accessibility to salutary or noxious facilities. It is also inversely related to the accessibility level to a facility.

In the context of housing development, a location may have good access to some salutary facilities (e.g., schools), but not to others (e.g., community centres) or be close to noxious facilities. Therefore, housing developers have to trade off the benefits and costs of having access to different facilities. In this study, the land suitability involves evaluation, classification and prioritization of the potential housing development sites according to their accessibility to various facilities. This type of problems can be tackled using GIS-based Multicriteria Decision Analysis (GIS-MCDA) procedures [13]. GIS-MCDA can be thought of as a process that combines and transforms geographical data regarding accessibility to facilities and value judgments of decision maker(s) to obtain accessibility patterns of potential housing development sites. Central to GIS-MCDA is the aggregation algorithms or decision rules [13]. In this study, two MCDA decision rules-Analytical Hierarchy Process (AHP) and the Ordered Weighted Averaging (OWA) - are used [14,15]. The main objectives of this paper are: 1) to implement AHP-OWA procedures to map accessibility patterns of housing development sites for determining the land suitability, and 2) to generate several scenarios to explore how the uncertainty in the decision makers' judgments can affect the MCDA outcomes.

This paper is organized as follows. Section 2 gives a review of the literature on the AHP, OWA, and AHP-OWA procedures. Section 3 presents a case study of mapping accessibility patterns in the context of housing development in Canmore, Alberta. Section 4 gives conclusions regarding the capabilities of the GIS-MCDA approach and findings.

2. AHP and OWA

2.1. AHP

Over the last decade or so, a number of MCDA decision rules have been implemented in the GIS environment, including Weighted Linear Combination (WLC) [16], ideal point methods [17], concordance analysis [18], and AHP [19]. AHP was originally developed in order to generate a simple way to help people make complex decisions. Later, the power and simplicity of AHP has led to a widespread acceptance and usage of the method [19-21].

The first step in AHP is to decompose a particular problem into a hierarchy that consists of all essential

elements of the problem. In developing a hierarchy, the top level is the ultimate goal of the decision analysis. The hierarchy then descends from the general goal to the more specific elements of the problem (e.g., objectives, attributes, and alternatives). In this study, a simple four-level hierarchical structure is developed (see Sub-section 3.3).

The second step is to generate objective and attribute weights using pairwise comparison procedure. The pairwise comparison method employs an underlying scale with odd values from 1 to 9 to rate the relative preferences for two elements of the hierarchy. If there is a need, then intermediate values (2, 4, 6, 8) between two adjacent intensities can be used. The pairwise comparison matrix has the following form: $A = [a_{pq}]_{n \times n}$, where a_{pq} is the pairwise comparison rating for attribute p and attribute q . The matrix A is reciprocal; that is $a_{qp} = a_{pq}^{-1}$, and all its diagonal elements, $a_{pp} = 1$, for $p = q$. Given this reciprocal property, only $n(n-1)/2$ actual pairwise comparisons are needed for an $n \times n$ matrix. Once the pairwise comparison matrix is obtained, the preferences are summarized so that each element of the hierarchical structure can be assigned a relative importance. This can be achieved by computing a set of weights, $w_j = [w_1, w_2, \dots, w_n]$, where $j = 1, 2, \dots, n$. The computation of the weights involves two steps: 1) the entries in the matrix A are normalized (that is, each element of the matrix is divided by the sum total of its column), and 2) the average value of the normalized weights is computed by dividing the sum of entries in each row of the normalized matrix by the number of elements in that row.

Last step of AHP is to obtain the overall priority score for each alternative. The overall priority score, R_i of the i th alternative is calculated in Equation (1).

$$R_i = \sum_{j=1}^n w_j x_{ij} \quad (1)$$

where w_j is the aggregated composite weights of objectives and attribute weights. The weights are calculated by the multiplications of the matrices of relative weights at each level of hierarchy. x_{ij} is the standardized attribute value for i -th alternative.

2.2. OWA

Although AHP is widely used, one of the major issues of AHP is its inability to address the uncertainty in the decision maker's judgments [22]. To overcome the shortcomings of the AHP, OWA is used to integrate AHP to determine the best alternative. OWA is a class of multicriteria aggregation operators [15]. It provides an extension and generalization for two fundamental classes of decision rules in GIS: the Boolean overlay operations

and WLC procedures. OWA involves a new concept: order weights ($v_j, j = 1, 2, \dots, n$) which is different from attribute weights ($w_j, j = 1, 2, \dots, n$). The attribute weight w_j is assigned to j -th attribute map for all locations to indicate the relative importance of the attribute according to the decision maker's preferences (see Subsection 2.1). The order weights are associated with the attribute values on the location by location basis. They are assigned to the i -th location's attribute value in decreasing order without considering from which attribute map the value comes.

The critical element of the OWA procedure is the method for obtaining the order weights. There are several methods for obtaining the order weights [23]. This study uses a fuzzy linguistic quantifier approach [24]. The concept of fuzzy quantifiers allows us to convert natural language into formal mathematical formulations. They can be represented as fuzzy subsets over the unit interval with proportional fuzzy statements, such as: All of the criteria should be satisfied ("All" for short), most of the criteria should be satisfied ("Most"), many of the criteria should be satisfied ("Many"), half of the criteria should be satisfied ("Half"), some of the criteria should be satisfied ("Some"), few of the criteria should be satisfied ("Few"), and at least one of the criteria should be satisfied ("At least one"). In this paper, the regular increasing monotone quantifiers, Q , is used [23]. If Q is a linguistic quantifier (e.g., "Most"), then it can be represented as a fuzzy subset over the unit interval $[0,1]$, where for each p in the unit interval, the membership grade $Q(p)$ indicates the compatibility of p with the concept denoted by Q . To identify the quantifier, we employ one of the most often used methods for defining a parameterized subset on the unit interval: $Q(p) = p^\alpha, \alpha > 0$ [25]. The order weights can be derived from attribute weights using Equation (2) as follows [23,26]:

$$v_j = \left(\sum_{k=1}^j u_k \right)^\alpha - \left(\sum_{k=1}^{j-1} u_k \right)^\alpha \tag{2}$$

where u_k is the reordered j -th attribute weight, w_j ; a

$$0 \leq v_j \leq 1 \text{ and } \sum_{j=1}^n v_j = 1.$$

The parameter α is associated with a set of order weights. By changing the parameter α , one can generate different types of linguistic quantifiers and associated order weights between two extreme cases of the "At least one" and "All" quantifiers. With different sets of order weights, one can generate a wide range of OWA operators, including the most often used GIS-base map combination procedures: WLC, Boolean overlay combination "OR" and "AND". The "AND" and "OR" operators represent the extreme cases of OWA and they correspond to the MIN (intersection) and MAX (union) operators, respectively (see **Table 1**). The order weights are associated with the measures of ORness and trade-off [27]. These measures take values in the interval from 0.0 to 1.0. ORness indicates the degree to which an OWA operator is similar to the logical "OR" in terms of its combinatorial behaviour. The trade-off measure can be interpreted as the degree of the order weights dispersion. Specifically, the degree to which the order weights are evenly distributed across all attributes controls the level of overall trade-off between attributes (criteria). The greater is the equality among the weights, the greater is the degree of the trade-off (see **Table 1**).

Given the attribute weights, w_j , attribute values x_{ij} , and the parameter α , the linguistic quantifier-guided OWA can be defined using Equation (3) as follows [23,26]:

$$OWA_i = \sum_{j=1}^n \left(\left(\sum_{k=1}^j u_k \right)^\alpha - \left(\sum_{k=1}^{j-1} u_k \right)^\alpha \right) z_{ij} \tag{3}$$

where $i = 1, 2, \dots, m, z_{i1} \geq z_{i2} \geq \dots \geq z_{in}$ is obtained by reordering the attribute values $x_{i1}, x_{i2}, \dots, x_{in}$.

Table 2 illustrates the OWA procedure for a given set of the attribute, $x_{ij} = (0.3, 0.1, 0.5, 0.7)$ and the attribute weights, $w_j = (0.05, 0.1, 0.35, 0.5)$.

2.3. AHP-OWA Procedures

The two approaches, AHP and linguistic quantifier-

Table 1. Selected linguistic quantifiers and corresponding α parameters.

α	Quantifier (Q)	OWA weights (v_j)	Combination procedure	Trade-off	OR-ness	Decision strategies
$\alpha \rightarrow 0$	At least one	$v_1 = 1; v_j = 0$ for others	Logic "OR" (MAX)	0	1	Extremely optimistic
$\alpha = 0.1$	Few	*	*	*	*	Very optimistic
$\alpha = 0.5$	Some	*	*	*	*	Optimistic
$\alpha = 1$	Half	$v_j = 1/n$ for all j	WLC	1	0.5	Neutral
$\alpha = 2$	Many	*	*	*	*	Pessimistic
$\alpha = 10$	Most	*	*	*	*	Very pessimistic
$\alpha \rightarrow \infty$	All	$v_n = 1; v_j = 0$ for others	Logic "AND" (MIN)	0	0	Extremely pessimistic

Note: "*" is Case dependent (see Equation (2) and **Table 2** for details)

Table 2. An illustrative example for calculating OWA.

Quantifier (Q)	j	x_{ij}	w_j	z_{ij}	u_j	v_j	$z_{ij} * v_j$	OWA _{i}
At least one $\alpha = 0$	1	0.3	0.05	0.7	0.50	1.00	0.700	0.700
	2	0.1	0.10	0.5	0.35	0.00	0.000	
	3	0.5	0.35	0.3	0.05	0.00	0.000	
	4	0.7	0.50	0.1	0.10	0.00	0.000	
Few $\alpha = 0.1$	1	0.3	0.05	0.7	0.50	0.93	0.651	0.680
	2	0.1	0.10	0.5	0.35	0.05	0.025	
	3	0.5	0.35	0.3	0.05	0.01	0.003	
	4	0.7	0.50	0.1	0.10	0.01	0.001	
Some $\alpha = 0.5$	1	0.3	0.05	0.7	0.50	0.71	0.497	0.616
	2	0.1	0.10	0.5	0.35	0.21	0.105	
	3	0.5	0.35	0.3	0.05	0.03	0.009	
	4	0.7	0.50	0.1	0.10	0.05	0.005	
Half $\alpha = 1$	1	0.3	0.05	0.7	0.50	0.50	0.350	0.550
	2	0.1	0.10	0.5	0.35	0.35	0.175	
	3	0.5	0.35	0.3	0.05	0.05	0.015	
	4	0.7	0.50	0.1	0.10	0.10	0.010	
Many $\alpha = 2$	1	0.3	0.05	0.7	0.50	0.25	0.175	0.456
	2	0.1	0.10	0.5	0.35	0.47	0.235	
	3	0.5	0.35	0.3	0.05	0.09	0.027	
	4	0.7	0.50	0.1	0.10	0.19	0.019	
Most $\alpha = 10$	1	0.3	0.05	0.7	0.50	0.00	0.000	0.210
	2	0.1	0.10	0.5	0.35	0.20	0.100	
	3	0.5	0.35	0.3	0.05	0.15	0.045	
	4	0.7	0.50	0.1	0.10	0.65	0.065	
All $\alpha \rightarrow \infty$	1	0.3	0.05	0.7	0.50	0.00	0.000	0.050
	2	0.1	0.10	0.5	0.35	0.00	0.000	
	3	0.5	0.35	0.3	0.05	0.00	0.000	
	4	0.7	0.50	0.1	0.10	1.00	0.050	

guided OWA, have been integrated and implemented in ArcGIS environment [28]. In the AHP-OWA procedures, AHP is a global tool for building a hierarchical structure of the spatial decision problem, analyzing the whole process, and prioritizing each alternative. The prioritization process in AHP uses a WLC to calculate the local scores of each alternative. The linguistic quantifier-guided OWA operators provide a general framework for making a series of AHP local aggregations [29].

In AHP-OWA procedures, users are first asked to use the AHP method to 1) construct the hierarchical structure, and 2) obtain weights for objectives and attributes by conducting pairwise comparisons. Then, linguistic quantifier-guided OWA is used to support user's decision making. Three main steps are involved at this stage: 1) specifying a linguistic quantifier Q , 2) generating a set of

order weights associated with Q , and 3) calculating the overall score for each alternative using linguistic quantifier-guided OWA (see Equation (3)).

3. Case study

3.1. Study area

Canmore, Alberta is located in the Canadian Rocky Mountains, approximately 100 km west of Calgary and 20 km east of Banff (see **Figure 1** and <http://www.canmore.ca>).

The town is the government and business centre for residents and employers in the Banff National Park, Kananaskis Country, and the Bow Valley. In 2006, Canmore, Alberta had a population of 16,000, including

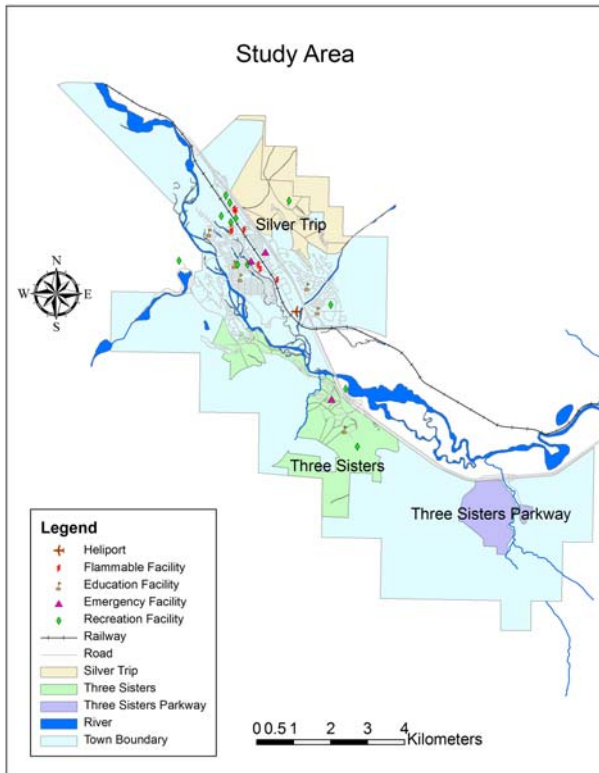


Figure 1. Study area.

about 5,000 non-permanent residents. The permanent population growth decreased by 0.1%, while the non-permanent population increased by 37.2% (see Figure 2). The town is undergoing rapid change and growth as a result of industrial tourism promotion and facility development. The change and growth contributed to a construction boom brought by the non-permanent residents. As a result of growing population pressures, issues of land use planning have become increasingly important.

3.2. Data

The data used in the Canmore case study consist of two

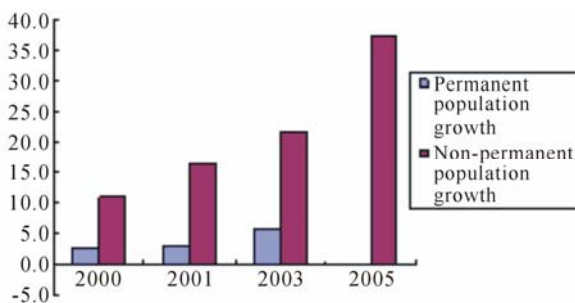


Figure 2. Population growth in selected years in Canmore, Alberta.

sets: 1) the data on the demand for various services, and 2) the data on the location of facilities supplying services. The Local Delivery Units (LDU), the smallest postal delivery zones, were used for identifying the spatial distribution of population (demand). The centroids of LDU areas were used as the demand points. The Future Development Areas (FDA) were identified by the Planning Department in Canmore (see Figure 1). FDAs contain 43 LDUs that are mainly distributed in the “Silver Trip”, “Three Sisters”, and “Three Sisters Parkway” areas of Canmore. The base map (Figure 1) shows the location of 30 existing facilities (see Table 3).

The facilities can be classified into two categories: 1) salutary facilities (e.g., education, emergency and recreation facilities), and 2) noxious facilities (e.g., flammable and noisy facilities). This distinction is made on the basis of the impact on the neighbouring communities brought by the proximity to those facilities. The proximity to the salutary facilities has a positive impact, while the proximity to noxious facilities is considered as a negative factor affecting the location of housing development. Consequently, the concept of accessibility is operationalized in the context of the different types of facilities. The objective for salutary facilities is to maximize the accessibility. In other words, the housing development should be located as close as possible to such facilities. Meanwhile, the accessibility to noxious facilities should be minimized, so the housing development should be located far away from such facilities.

3.3. Hierarchical Structure of the Problem

In order to evaluate the accessibility level of housing development sites, the following objectives are considered: 1) accessibility to education facilities, 2) accessibility to emergency facilities, 3) accessibility to leisure facilities, 4) accessibility to flammable facilities, and 5) accessibil

Table 3. Facilities in Canmore, Alberta.

Type of facilities	Name and number of facilities	Total Number
Education facilities	Schools (5), Daycare center (1), Library (1)	7
Emergency facilities	Fire stations (2), Hospital (1)	3
Recreation facilities	Golf courses (3), Campgrounds (3), Community and recreation centers (6)	12
Flammable facilities	Gas tanks (4), Lumber yards (2)	6
Noisy facilities	Pacific railway (1), Heliport (1)	2
Total		30

ity to noisy facilities (see **Figure 3**). Each of the first four objectives is measured by two attributes: the average and maximum distance. The distance was measured using the road network-based distance between the centroid of LDUs within FDAs and the location of facilities. The accessibility to noisy facilities was quantified by two attributes: the distance (Euclidean distance) to the pacific railway and heliport. The attribute map layers were developed using ArcGIS [30]. Ten attribute map layers have been generated and all of them have been converted into 30m resolution raster data layers, which constitute the input dataset for mapping the accessibility patterns of housing development sites.

3.4. Attribute Map Layers

The AHP-OWA procedures require that the attributes be represented in the form of standardized attribute map layers. The score range method, which linearly transforms the attribute values to standard values ranging from 0 to 1, has been used to transform the 10 attribute map layers into the standardized attribute map layers [13]. **Figure 4** shows the standardized attribute map layers.

3.5. Criterion weights

Given the standardized attribute map layers, one of the key inputs for the AHP-OWA procedures is the set of criterion weights; that is, the weights assigned to the objective and attribute maps. The weights have been de-

rived using the pairwise comparison method (Saaty 1980; see Subsection 2.1). This approach required an expert in the Planning Department of the Town of Canmore to provide his/her best judgments regarding the relative importance of objectives and attributes. A questionnaire was used to assist the expert to make his/her judgments. The questionnaire contained the following information: the definition of objective and attribute weights in the context of MCDA, the scale for ratio judgment, and a set of questions regarding the ratios of importance for pairs of objectives or attributes. The scale in **Table 4** was used.

Given the 1-9 scale, a series of the following types of questions were asked: what is the ratio of importance of

Table 4. Scale for pairwise comparisons [14].

Intensity of Importance	Description
1	Equal importance
3	Moderate importance of one factor over another
5	Strong or essential importance
7	Very strong or demonstrated importance
9	Extreme importance
2, 4, 6, 8	Intermediate values
Reciprocals	Values for inverse comparison

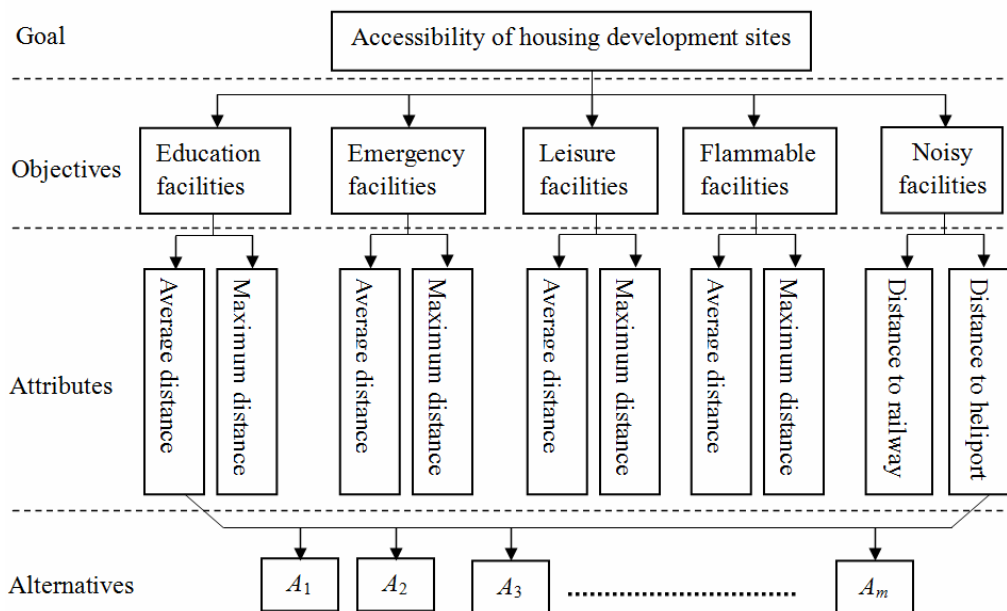


Figure 3. Hierarchical structure of accessibility of housing development sites to existing facilities in canmore, alberta.

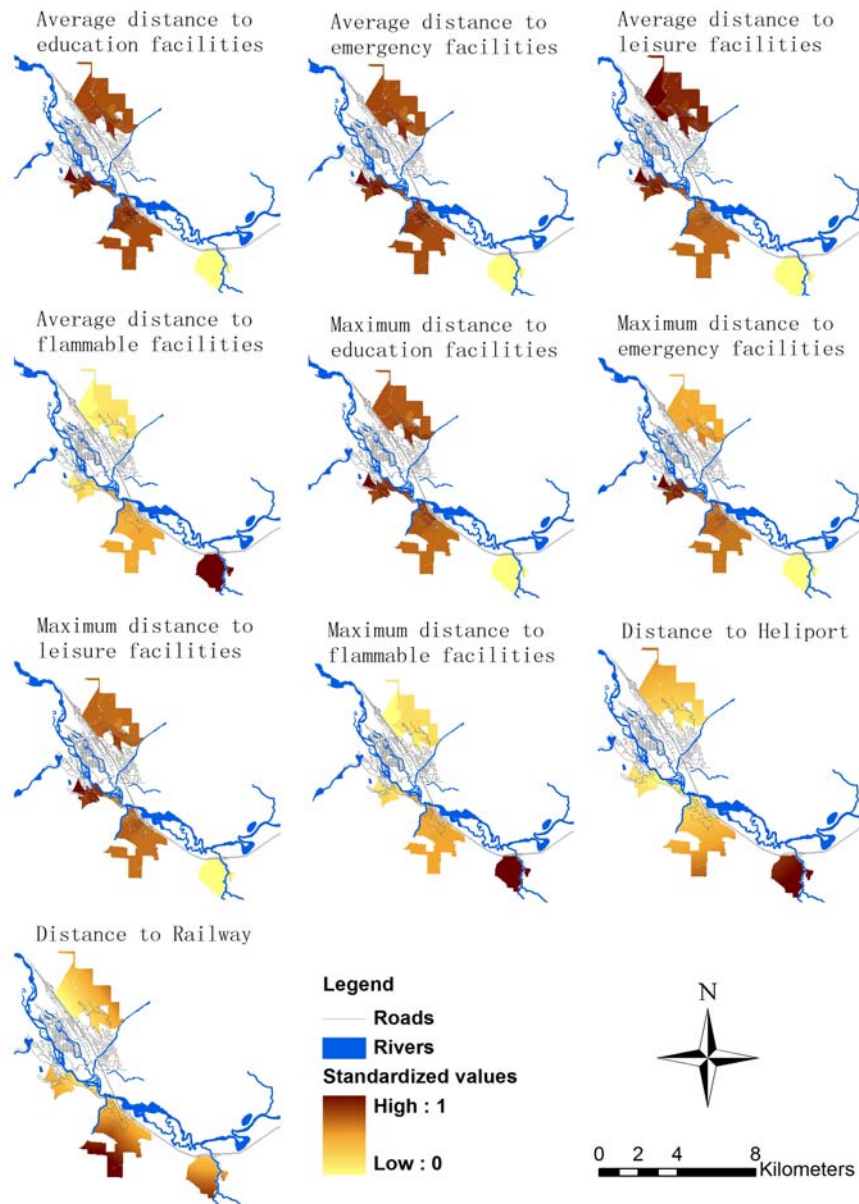


Figure 4. Standardized attribute map layers.

C1 to C2? The ratio questions were asked at each of the two levels of the hierarchy: the objective level (between pairs of the objectives) and the attribute level (between pairs of attributes associated with a given objective). Throughout the evaluation process, the expert was given the opportunity to re-examine the pairwise comparisons, re-calculate weights and check the consistency of his judgments.

After debate and careful analysis of the set of evaluation criteria, the planner indicated the relative importance of 5 objectives and 10 attributes by the pairwise comparisons at each level of the hierarchy. The accessibility to emergency facilities and leisure facilities are the two

most important objectives, followed by accessibility to education facilities, flammable facilities and noisy facilities (see **Table 5**).

The planner thought that the geographical efficiency (average distance) and equity (maximum distance) should be assigned equal weights of 0.5 in the process of mapping accessibility patterns of housing development sites. The planners also indicated that the distance to the railroad is 4 times more important than the distance to the heliport with respect to the accessibility to noisy facilities. Consequently, the attribute weights of 0.8 and 0.2 were assigned to the railroad and heliport criteria, respectively.

Table 5. Pairwise comparison matrix and five objectives weights.

	Education facilities	Emergency facilities	Leisure facilities	Flammable facilities	Noisy facilities	Weights
Education facilities	1	1/3	1/2	7	8	0.171
Emergency facilities	3	1	1	6	7	0.378
Leisure facilities	2	1	1	5	7	0.347
Flammable facilities	1/7	6	1/5	1	2	0.059
Noisy facilities	1/8	7	1/7	0.5	1	0.045

Note: The consistency ratio, $CR = 0.076 < 0.1$

3.6. Linguistic Quantifier-Guided OWA Combination

Different outcomes can be generated by varying the linguistic quantifiers in the AHP-OWA procedures (see Section 2.2). One can obtain a very large number of evaluation outcomes by varying the α parameter associated with the linguistic quantifiers. There are 7 linguistic quantifiers associated with the goal and five objectives; thus, theoretically, $7(1+5)$ alternative evaluation scenarios can be generated for this case study. In this paper, we limit the analysis to a selection of five linguistic quantifiers: “Many” is assigned to accessibility to education facilities,

“All” is assigned to accessibility to emergency facilities, “Many” is assigned to accessibility to leisure facilities, “Most” is assigned to accessibility to flammable facilities, and “Half” is assigned to accessibility to noisy facilities. Given the weights for objectives and attributes, and linguistic quantifiers for all objectives, we applied selected fuzzy linguistic quantifiers (“At least one”, “Few”, “Some”, “Half”, “Many”, “Most” and “All”) for the goal of the decision making to obtain a series of accessibility evaluation outcomes (see Figure 5).

In other words, these alternative scenarios have been developed under the assumption that only the linguistic quantifier associated with the goal of the decision making

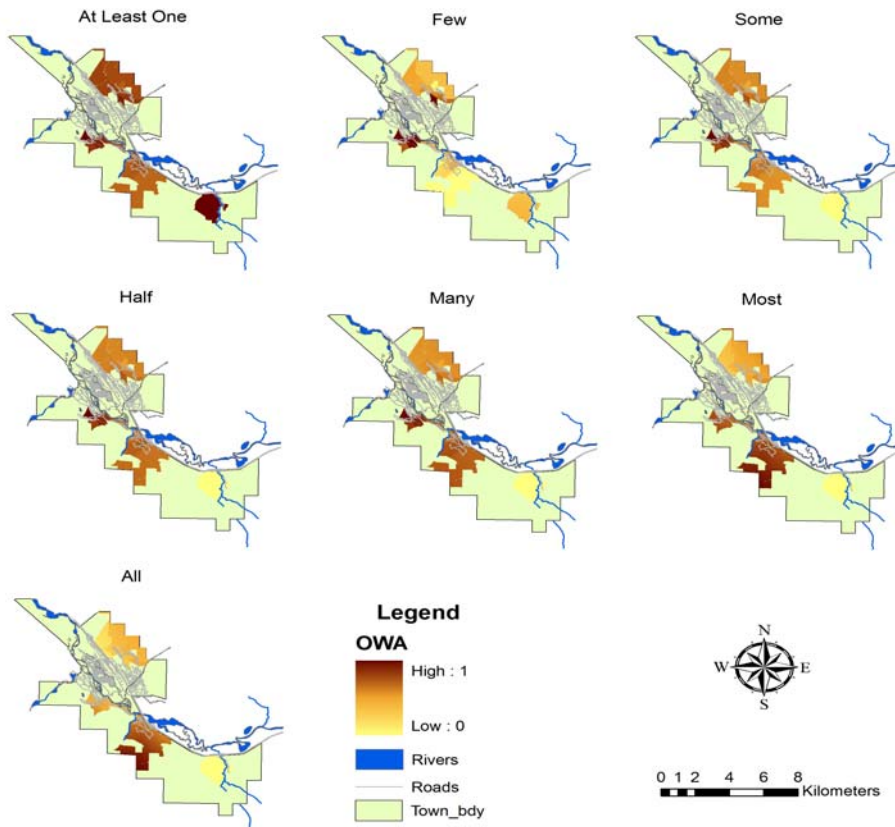


Figure 5. Accessibility patterns of housing development sites: The results of AHP-OWA procedures for selected linguistic quantifiers.

problem changes. The linguistic quantifiers correspond to the following decision strategies: extremely optimistic, very optimistic, less optimistic, neutral, less pessimistic, very pessimistic, and extremely pessimistic (see **Table 1**). As mentioned, the overall site suitability for housing development is determined based on the accessibility levels in this study. Consequently, the OWA values were reclassified into four suitability based on “Equal Intervals” (**Table 6**). The reclassified outcomes are displayed in **Figure 6**.

3.7. Results

Comparison of corresponding maps in **Figures 5, 6** indicates that the increasing value of α corresponds to the decreasing degree of optimism. This implies that gradually lower and lower order weights are assigned to the higher attribute values, while higher and higher order weights are assigned to the lower attribute values at a given location. As a result, the size of the areas suitable for housing development gradually becomes smaller and

Table 6. Land suitability classification based on OWA values.

Class	Description	OWA values
S1 (highly suitable)	Land has no significant limitations to the given type of use.	0.75 – 1
S2 (moderately suitable)	Land has limitations which in aggregate are moderately severe for a given type of use.	0.5 – 0.75
S3 (marginally suitable)	Land has limitations which in aggregate are severe for a given type of use.	0.25 – 0.5
N (Not suitable)	Land is not suitable and has limitations that may be surmountable in time.	0 – 0.25

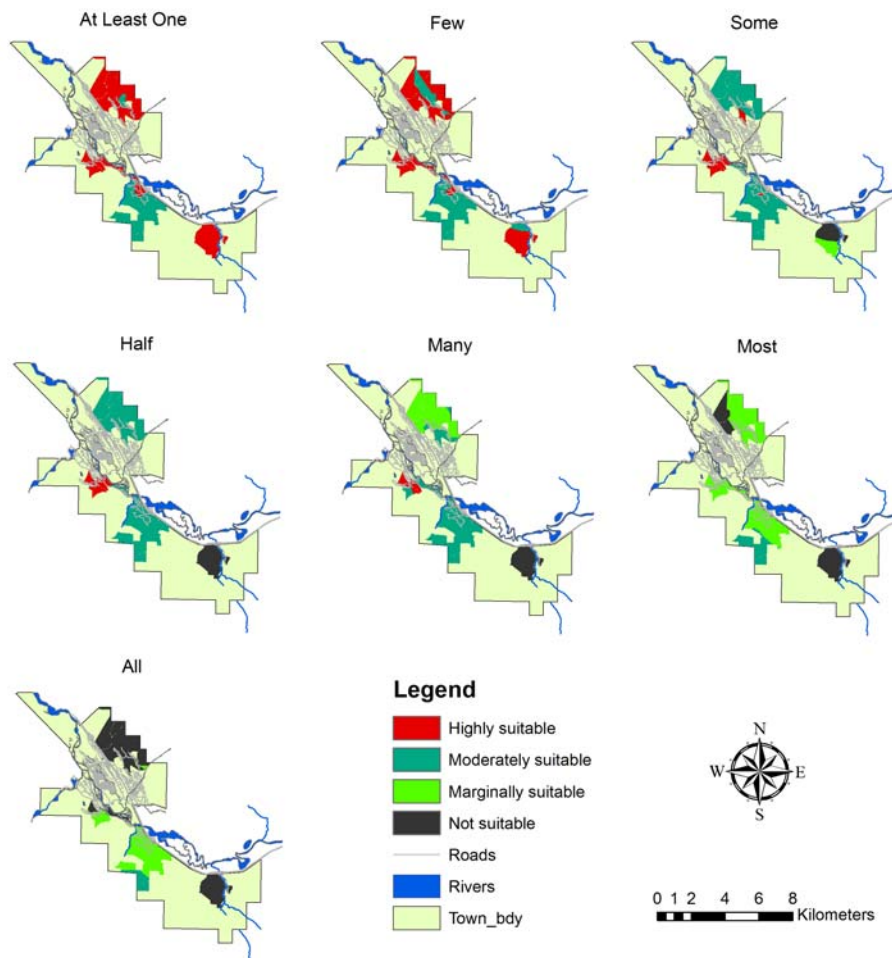


Figure 6. Site suitability for housing development: The reclassified results of AHP-OWA procedures for selected linguistic quantifiers.

smaller (see **Figures 6 and 7**).

The linguistic term “At least one” ($\alpha \rightarrow 0$) represents an extremely optimistic strategy. Under this strategy, the decision maker is willing to take the highest risk while identifying the best sites for housing development. This scenario selects the highest possible value at each location. In other words, the decision making can be based on optimistic attitudes represented by the best possible outcomes. Under this scenario, the results of AHP-OWA procedures show that most of FDAs are at least moderately suitable for housing development in terms of the accessibility level. With α close to 0, 65% of the FDAs are dominated by sites highly suitable for housing development and 35% of the FDAs are moderately suitable for housing development (see **Figure 7**). There are no unsuitable sites at all.

The linguistic terms “Few” ($\alpha = 0.1$) and “Some” ($\alpha = 0.5$) correspond to a very optimistic strategy and optimistic strategy, respectively. For $\alpha = 0.1$, the results of AHP-OWA procedures show that the “highly suitable” class covers 55% of the FDAs and the “moderately suitable” area has increased to 45% of the total. There are no sites, which belongs to the other three classes. When α increases to 0.5, the highly suitable is down to 11%, but the class “moderately suitable” has greatly increased to 74%. Noticeably, 6% and 9% of the FDAs are under the classes “marginally suitable” and “unsuitable”, respectively. The two classes concentrate on the “Three Sister Parkway” area. In other words, it is the only place characterized by a low accessibility level when applying the linguistic term “Some”.

The use of linguistic term “Half” ($\alpha = 1$) means that equal order weights are assigned to all criteria. This leads to a neutral strategy. For this strategy, the highly suitable FDAs account for 8% of the total and they are located in the northwest part of the “Three Sisters” area (see **Figure 6**). The class “moderately suitable” has increased to 76% of the FDAs. Land parcels classified as “moderately suitable” are clustered in the “Silver Trips” area and the rest of the “Three Sisters” area. The class “unsuitable”, mainly located in the “Three Sister Parkways” area ac-

counts for 16% of the total.

The linguistic term “Many” ($\alpha = 2$) and “Almost” ($\alpha = 10$) represent a pessimistic strategy and a very pessimistic strategy, respectively. For $\alpha = 2$, the “highly suitable” and “moderately suitable” classes have been squeezed down to 5% and 47%, respectively. These two classes are characterized by a high accessibility level. They are located in the “Three Sisters” area when applying the linguistic term of “Many”. The class “marginally suitable” is also located in the “Silver Trips” area. It is characterized by a large increase (33% of the FDAs) in comparison with $\alpha = 1$. The “unsuitable” class accounts for almost the same proportion (15%) of the total and it is still dominant in the “Three Sister Parkways” area. For $\alpha = 10$, the “highly suitable” and “moderately suitable” areas are down to 0% and 13%, respectively. The classes “unsuitable” and “marginally suitable” are characterized by a large increase to 26% and 61% of the FDAs. They are mostly located in the “Three Sister Parkway” and “Silver Trips” areas, respectively.

When linguistic term “All” ($\alpha \rightarrow \infty$) is applied, an extremely pessimistic strategy is adopted (see Subsection 2.2). It represents the worst-case scenario. Under this scenario, the suitability pattern for housing development is composed of the worst possible outcomes. As expected the results of AHP-OWA procedures show that a very small area (6% of the FDAs), located in the south part of the “Three Sister” area, is characterized by a moderate suitability for housing development in terms of the accessibility level. There are no highly suitable sites for housing development (see **Figure 6**). Noticeably, there is a large increase of the areas categorized as “unsuitable” (for $\alpha \rightarrow \infty$) at the expense of declining the “marginally suitable” areas (for $\alpha = 10$). For the extremely pessimistic strategy, the “unsuitable” class is the dominant one. It accounts for 59% of the total. The “unsuitable” and “marginally suitable” classes together account for 94% of the FDAs.

4. Conclusions

This study has presented the application of AHP-OWA

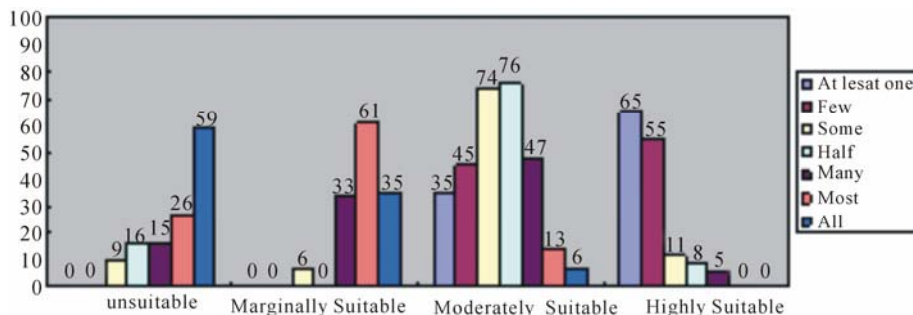


Figure 7. Areas (%) of suitability classes derived from the seven resultant scenario maps.

procedures for mapping accessibility patterns of potential housing development sites in Canmore, Alberta. The method provides a mechanism to generate a wide range of decision strategies or evaluation scenarios by incorporating the linguistic terms with the associated α parameters. The AHP-OWA procedures incorporate uncertainty of expert and decision maker' opinions regarding the evaluation criteria and their weights, and provide a mechanism for guiding them through the multi-criteria combination procedures. Several alternative scenarios of site suitability for housing development have been developed in this study. They show how the decision maker's attitude towards the uncertainty involved in land suitability decision-making process can influence the outcomes. It should be emphasized that the AHP-OWA procedure does not aim at determining a single "optimal" scenario. The procedure recommends sites under different decision strategies could be considered as the priority areas for housing development according to the level of attitudes towards risk (e.g., optimistic, pessimistic, and neutral). The other key capability of AHP-OWA procedure is that it is particularly useful for experts and decision makers to interact with and analyze all possible alternative scenarios. Consequently, it facilitates a better understanding of the alternative suitability patterns and may lead to adopt a strategy for housing development that planning authorities would never consider using traditional land suitability analysis methods.

Finally, it should be noted that the selection of criteria was largely limited due to data availability. The study has been based on accessibility to a variety of facilities that affect the site suitability prioritization for housing development. Therefore, it is recognized that this research only provides preliminary results for further assessment of land suitability in the context of housing development.

5. Acknowledgements

This research was supported by the GEOIDE Network (Project: HSS-DSS-17) of the Networks of Centers of Excellence. The authors would like to thank Gary Buxton, senior manager of the Planning and Engineering Department at the Town of Canmore, for his support in data preparation, criteria selection, and pairwise comparison.

6. References

- [1] P. L. Knox, "Measure of Accessibility as Social Indicators: A Note," *Social Indicators Research*, Vol. 7, No. 4, 1980, pp. 367-377. [doi:10.1007/BF00305607](https://doi.org/10.1007/BF00305607)
- [2] G. Sénécal, "Urban Spaces and Quality of Life: Moving beyond Normative Approaches," *Policy Research Initiative*, Vol. 5, No. 1, 2002, pp. 306-318.
- [3] K. E. Smoyer-Tomic, J. Hewko and M. J. Hodgson, "Spatial Accessibility and Equity of Playgrounds in Edmonton," *The Canadian Geographer*, Vol. 48, No. 3, 2004, pp. 287-302. [doi:10.1111/j.0008-3658.2004.00061.x](https://doi.org/10.1111/j.0008-3658.2004.00061.x)
- [4] S. Nicholls, "Measuring the Accessibility and Equity of Public Parks: A Case Study Using GIS," *Managing Leisure*, Vol. 6, No. 4, 2001, pp. 201-219. [doi:10.1080/13606710110084651](https://doi.org/10.1080/13606710110084651)
- [5] M. Q. Dalvi, "Behavioural Modelling, Accessibility, Mobility and Need: Concepts and Measurement", In: D. A. Hensher and P. R. Stopher, Eds., *Behavioural Travel Modelling*, Croom Helm, London, 1978, pp. 639-653.
- [6] D. M. McAllister, "Equity and Efficiency in Public Facility Location," *Geographical Analysis*, Vol. 8, 1976, pp. 47-63. [doi:10.1111/j.1538-4632.1976.tb00528.x](https://doi.org/10.1111/j.1538-4632.1976.tb00528.x)
- [7] R. Morrill and S. Symons, "Efficiency and Equity Aspects of Optimum Location," *Geographical Analysis*, Vol. 9, 1977, pp. 215-225.
- [8] R. L. Hodgart, "Optimizing Access to Public Services," *Progress in Human Geography*, Vol. 2, 1978, pp. 17-48.
- [9] Jong and J. R. Eck, "Location Profile Based Measures as an Improvement on Accessibility Modelling in GIS," *Computers, Environment and Urban Systems*, Vol. 20, No. 3, 1996, pp. 181-190. [doi:10.1016/S0198-9715\(96\)00013-0](https://doi.org/10.1016/S0198-9715(96)00013-0)
- [10] G. Shen, "Measuring Accessibility of Housing to Public-Community Facilities Using Geographical Information Systems," *Review of Urban and Regional Development Studies*, Vol. 14, No. 3, 2002, pp. 235-255. [doi:10.1111/1467-940X.00056](https://doi.org/10.1111/1467-940X.00056)
- [11] X. Zhu, S. Liu and M. Yeow, "Accessibility Analysis for Housing Development in Singapore with GIS and Multi-Criteria Analysis Methods," *Applied GIS*, Vol. 2, No. 2, 2006, pp. 13.1-13.12.
- [12] P. Apparicio and A. Seguin, "Measuring the Accessibility of Services and Facilities for Residents of Public Housing in Montréal," *Urban Studies*, Vol. 43, No. 1, 2006, pp. 187-211. [doi:10.1080/00420980500409334](https://doi.org/10.1080/00420980500409334)
- [13] J. Malczewski, "GIS and Multicriteria Decision Analysis," John Wiley and Sons, New York, 1999.
- [14] T. L. Saaty, "The Analytic Hierarchy Process," McGraw-Hill, New York, 1980.
- [15] R. R. Yager, "On Ordered Weighted Averaging Aggregation Operators in Multicriteria Decision Making," *IEEE Transactions on Systems, Man and Cybernetics*, Vol. 18, No. 1, 1988, pp. 183-190. [doi:10.1109/21.87068](https://doi.org/10.1109/21.87068)
- [16] S. Carver, "Integrating Multicriteria Evaluation with GIS," *International Journal of Geographical Information Science*, Vol. 5, No. 3, 1991, pp. 321-339. [doi:10.1080/02693799108927858](https://doi.org/10.1080/02693799108927858)
- [17] J. M. C. Pereira and L. Duckstein, "A Multiple Criteria Decision Making Approach to GIS-Based Land Suitability Evaluation," *International Journal of Geographical*

- Information Systems*, Vol. 7, No. 5, 1993, pp. 407-424.
[doi:10.1080/02693799308901971](https://doi.org/10.1080/02693799308901971)
- [18] F. Joerin, M. C. Rey, A. Nembrini and G. Desthieux, "Informationet Participation pour L'Amenagement du Territoire," *Revue Internationale de Geomatique*, Vol. 11, No. 3/4, 2001, pp. 309-332.
- [19] R. Banai, "Fuzziness in Geographical Information Systems: Contribution from the Analytic Hierarchy Process," *International Journal of Geographical Information Science*, Vol. 7, No. 4, 1993, pp. 315-329.
[doi:10.1080/02693799308901964](https://doi.org/10.1080/02693799308901964)
- [20] E. H. Forman and S. I. Gass, "The Analytic Hierarchy Process: An Exposition," *Operations Research*, Vol. 49, No. 4, 2001, pp. 469-486.
[doi:10.1287/opre.49.4.469.11231](https://doi.org/10.1287/opre.49.4.469.11231)
- [21] K. Habibi, S. Lotfi and M. J. Koohsari, "Spatial Analysis of Urban Fire Station Locations by Integrating AHP Model and IO Logic Using GIS," *Journal of Applied Sciences*, Vol. 8, No. 19, 2008, pp. 3302-3315.
[doi:10.3923/jas.2008.3302.3315](https://doi.org/10.3923/jas.2008.3302.3315)
- [22] H. Deng, "Multi-Criteria Analysis with Fuzzy Pairwise Comparisons," *International Journal of Approximate Reasoning*, Vol. 21, 1999, pp. 215-231.
[doi:10.1016/S0888-613X\(99\)00025-0](https://doi.org/10.1016/S0888-613X(99)00025-0)
- [23] R. R. Yager, "On the Inclusion of Importances in OWA Aggregation," In: R. R. Yager and J. Kacprzyk, Eds., *The Ordered Weighted Averaging Operators: Theory and applications*, Kluwer Academic Publishers, Boston, 1997, pp. 41-59.
- [24] L. A. Zadeh, "A Computational Approach to Fuzzy Quantifiers in Natural Languages," *Computers and Mathematics with Applications*, Vol. 9, No. 1, 1983, pp. 149-184.
[doi:10.1016/0898-1221\(83\)90013-5](https://doi.org/10.1016/0898-1221(83)90013-5)
- [25] R. R. Yager, "Quantifier Guided Aggregation Using OWA Operators," *International Journal of Intelligent Systems*, Vol. 11, No. 1, 1996, pp. 49-73.
[doi:10.1002/\(SICI\)1098-111X\(199601\)11:1<49::AID-IN T3>3.3.CO;2-L](https://doi.org/10.1002/(SICI)1098-111X(199601)11:1<49::AID-IN T3>3.3.CO;2-L)
- [26] J. Malczewski, "Ordered Weighted Averaging with Fuzzy Quantifiers: GIS-Based Multicriteria Evaluation for Land-Use Suitability Analysis," *International Journal of Applied Earth Observation and Geoinformation*, Vol. 8, No. 4, 2006, pp. 249-268.
- [27] H. Jiang and J. R. Eastman, "Application of Fuzzy Measures in Multi-Criteria Evaluation in GIS," *International Journal of Geographical Information Systems*, Vol. 14, No. 2, 2000, pp. 173-184.
[doi:10.1080/136588100240903](https://doi.org/10.1080/136588100240903)
- [28] S. Boroushaki and J. Malczewski, "Implementing an Extension of the Analytical Hierarchy Process Using Ordered Weighted Averaging Operators with Fuzzy Quantifiers in Arcgis," *Computers and Geosciences*, Vol. 34, No. 4, 2008, pp. 399-410.
[doi:10.1016/j.cageo.2007.04.003](https://doi.org/10.1016/j.cageo.2007.04.003)
- [29] R. R. Yager and A. Kelman, "An Extension of the Analytical Hierarchy Process Using OWA Operators," *Journal of Intelligent and Fuzzy Systems*, Vol. 7, No. 4, 1999, pp. 401-417.
- [30] ESRI, "Using Arcgis Spatial Analyst: Arcgis 9.1," ESRI Press, 2004.