

Marchantiophyta, Bryophyta

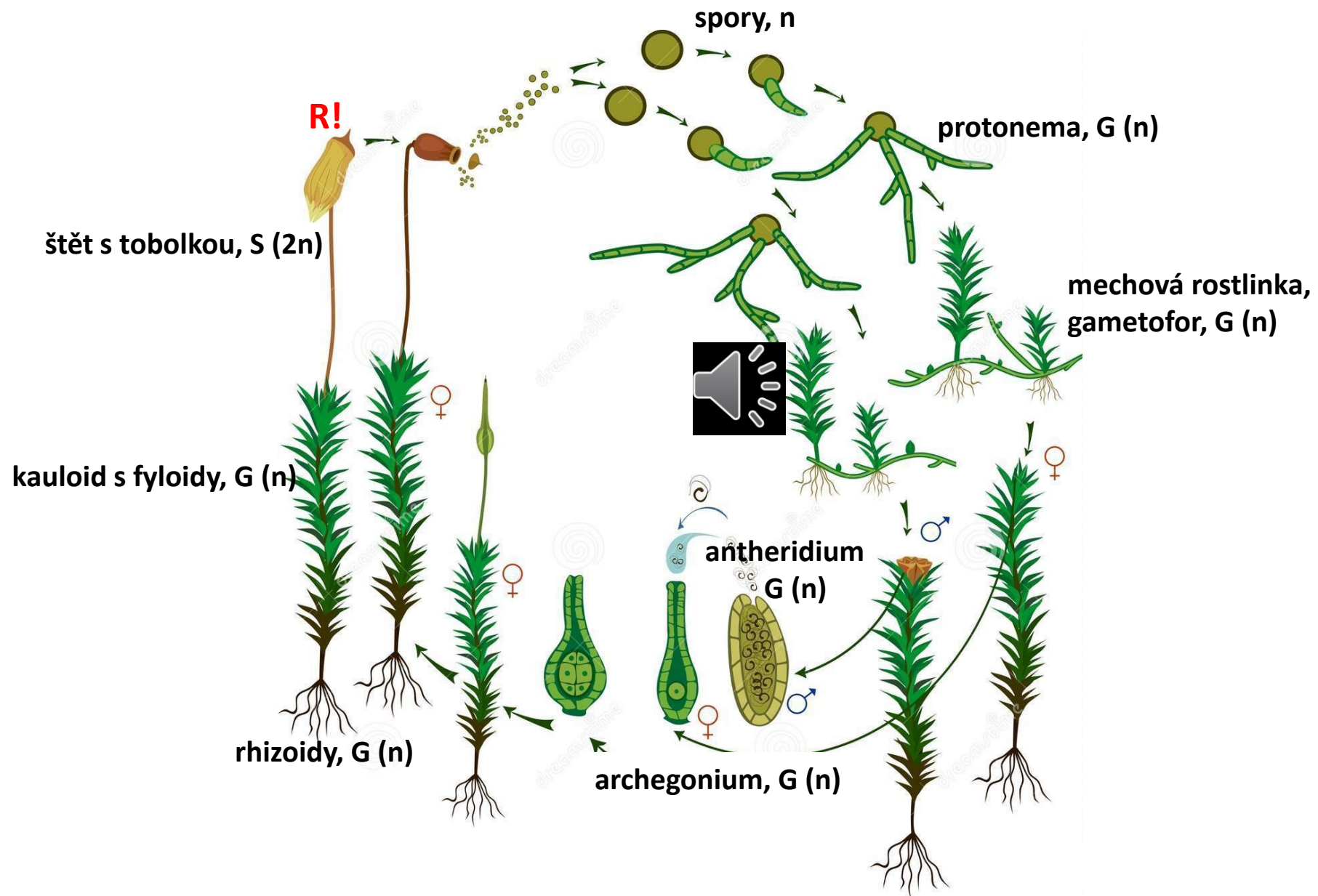


Marchantiophyta



Bryophyta

Mechorosty – metageneze



Marchantiophyta, *Marchantia polymorpha*



stélka s
archegoniofory



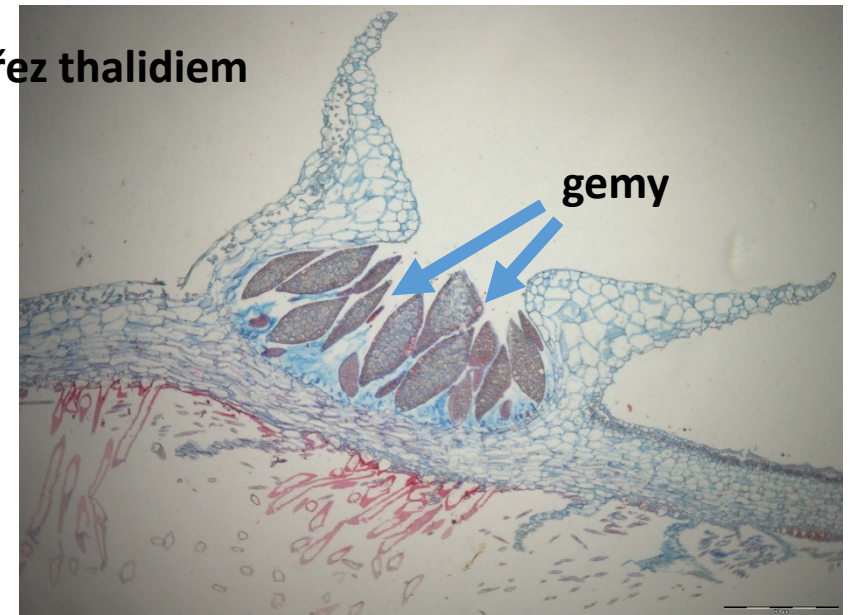
stélka s thalidii



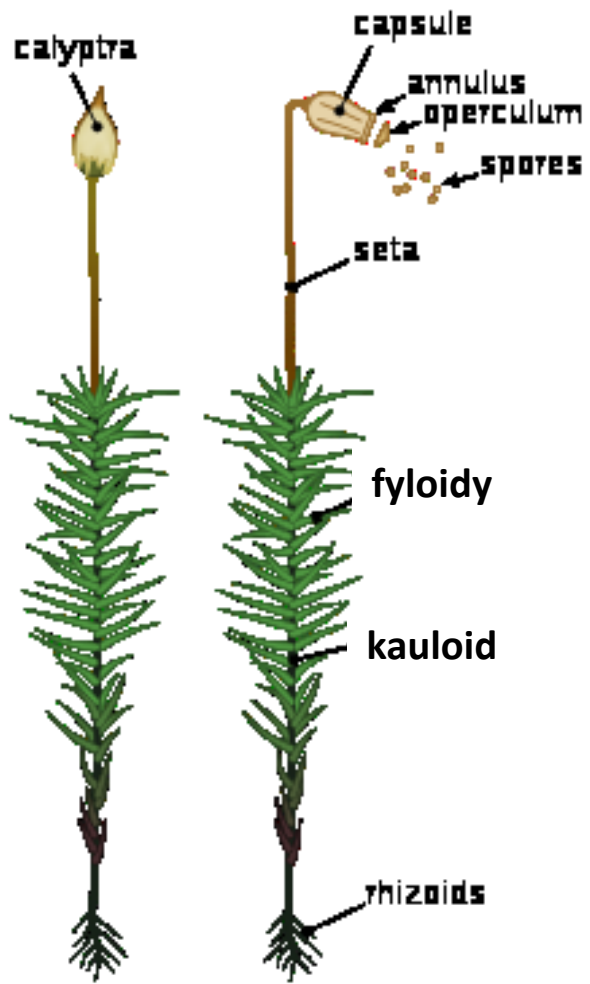
průřez thalidiem



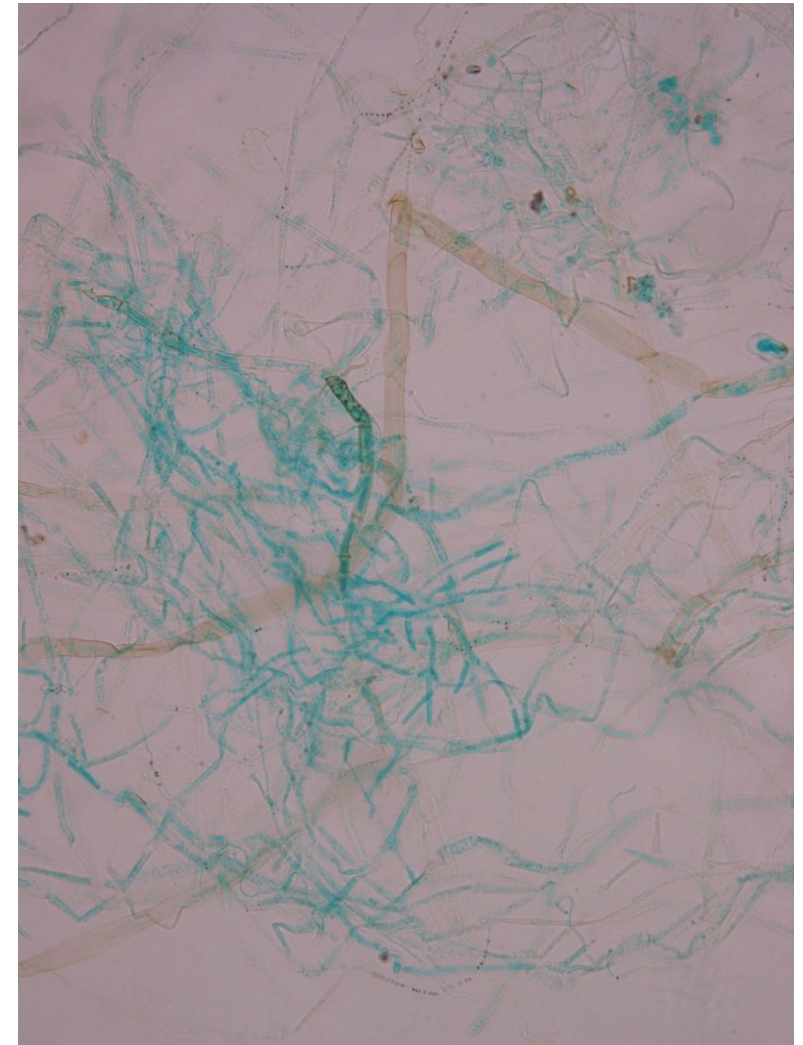
stélka s
antheridiofory



Bryophyta, Polytrichopsida



Polytrichum commune



protonema

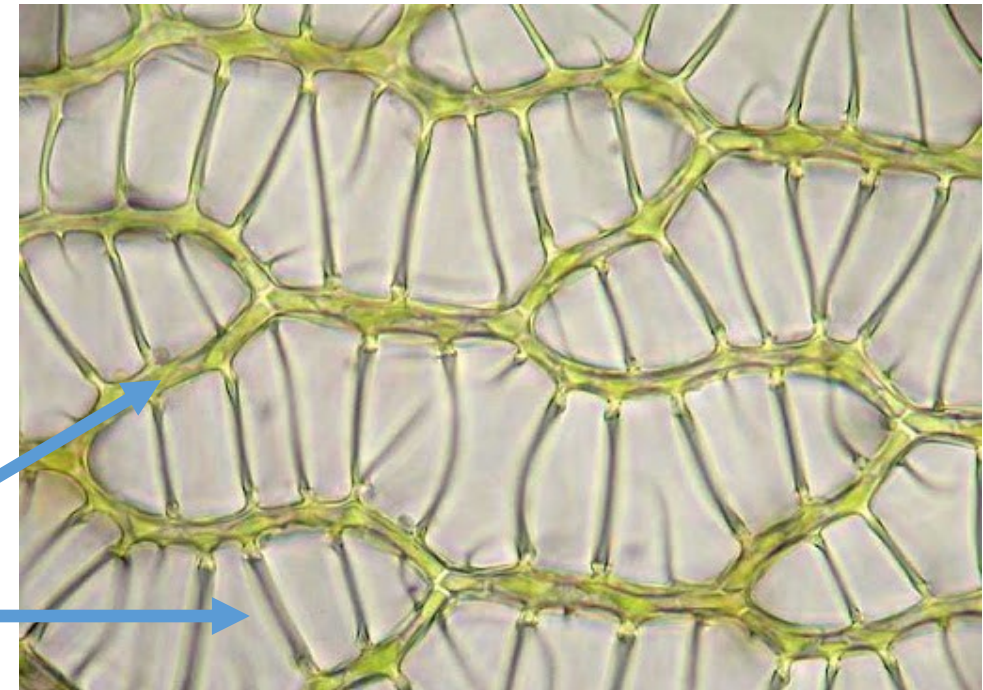
Bryophyta, Sphagnopsida



Sphagnum sp.



hlavička

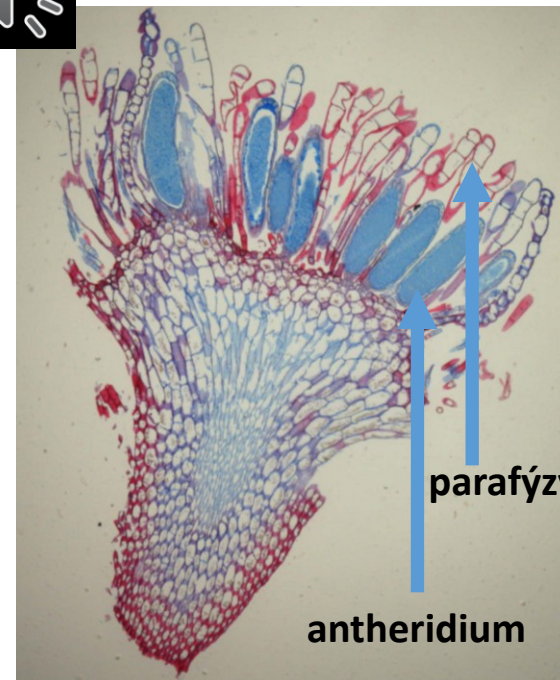
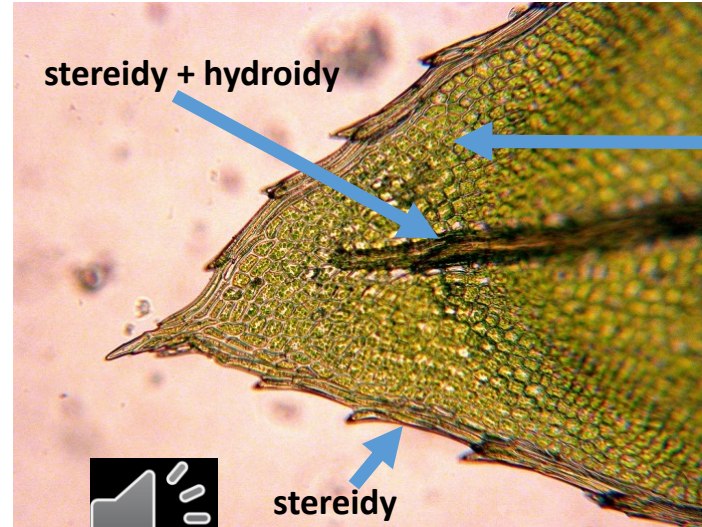


lístky rašeliníku jsou tvořeny
dvěma typy buněk: zelené
drobné buňky (chlorocyty)
mají asimilační funkci, nezelné
velké buňky (hyalocyty)
plní funkci cisteren

Bryophyta, Bryopsida



Mnium hornum



lístek měříku je tvořen
diferencovanými buňkami

