

vybrala jsem pouze 48/ hod interval, myslim ze je snaze interpretovatelný , snad to neva

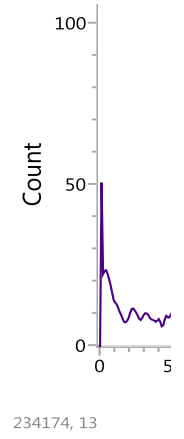
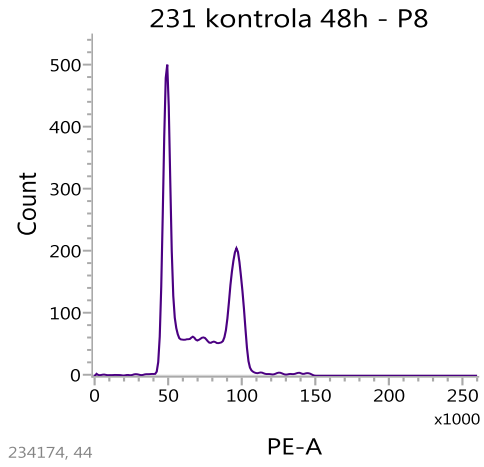
### Statistics

Name	Events	% Parent	% Grandpa	% Total	FSC-A Mea
231 kontrola 48h:subG0	73	0.98	0.96	0.73	28,131
231 kontrola 48h:G1	3,509	46.94	46.26	35.09	36,069
231 kontrola 48h:S	1,135	15.18	14.96	11.35	43,009
231 kontrola 48h:G2M	2,463	32.95	32.47	24.63	50,049
231 cis 48h:subG0	865	16.58	16.44	8.65	15,872
231 cis 48h:G1	341	6.54	6.48	3.41	34,500
231 cis 48h:S	731	14.01	13.89	7.31	43,705
231 cis 48h:G2M	2,729	52.31	51.87	27.29	53,971
231 dox 48h:subG0	394	27.1	26.68	17.53	10,219
231 dox 48h:G1	66	4.54	4.47	2.94	29,366
231 dox 48h:S	298	20.5	20.18	13.26	39,093
231 dox 48h:G2M	555	38.17	37.58	24.69	45,525

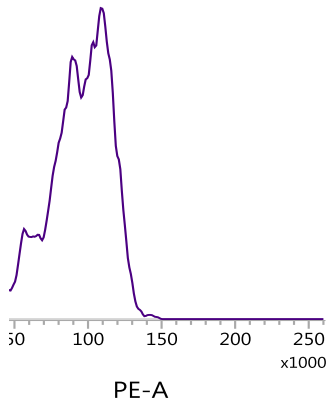
adi ;-]

SSC-A Mean

- 17,495
- 15,217
- 19,023
- 24,066
- 31,376
- 22,594
- 34,139
- 44,379
- 41,516
- 20,435
- 28,307
- 35,144



231 cis 48h - P8



231 dox 48h - P8

