

flowcytometr - bunecny cyklus BM2

FSC - forward scatter - velikost bunek

SSC - side scatter - granularita bunek

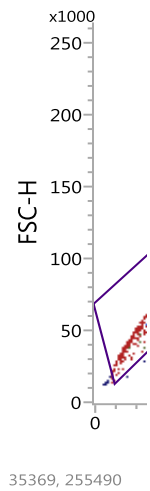
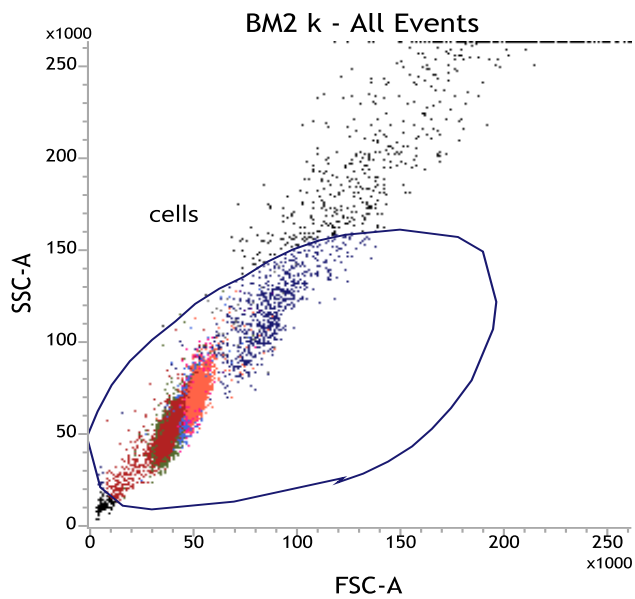
PE - laser k detekci propidium jodidu navazaneho na DNA

z populace "cells" (gate na prvni grafu) vybrany "singlety" (gate na druhem grafu) a pouzve u nich hodn

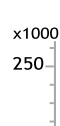
Statistics

Name	Events	% Parent	% Grandpa	% Total	FSC-A Mean	SSC-A Mean
BM2 k:subt	1,176	13.93	13.91	11.76	35,182	46,232
BM2 k:G1	4,510	53.41	53.35	45.1	39,698	49,229
BM2 k:S	1,170	13.86	13.84	11.7	48,847	64,773
BM2 k:G2M	1,280	15.16	15.14	12.8	53,753	72,173
BM2 TPA:s	1,618	21.91	21.57	16.18	22,235	20,848
BM2 TPA:C	2,201	29.81	29.34	22.01	28,748	23,049
BM2 TPA:S	284	3.85	3.79	2.84	27,580	29,445
BM2 TPA:C	3,074	41.63	40.98	30.74	44,734	38,245

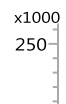
kontrola

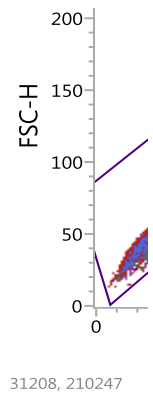
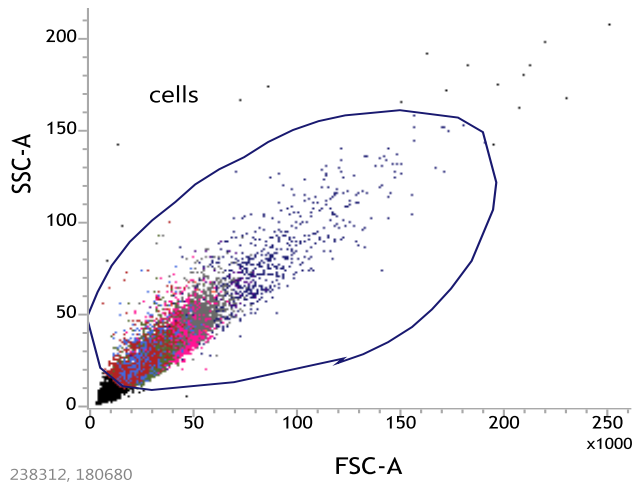


TPA

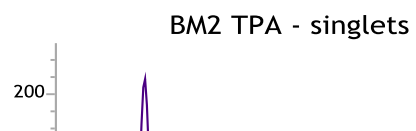
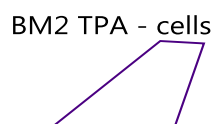
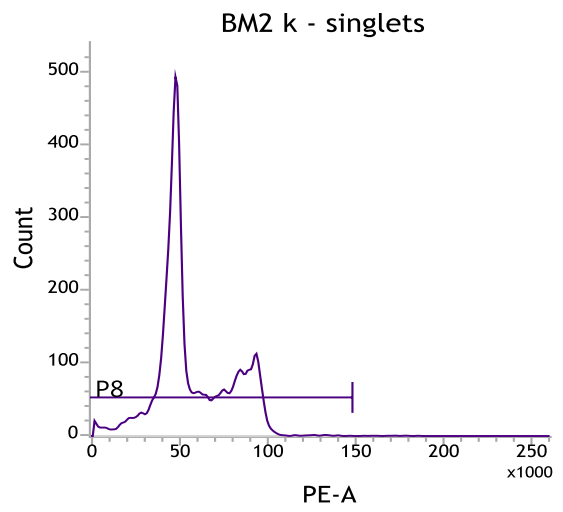
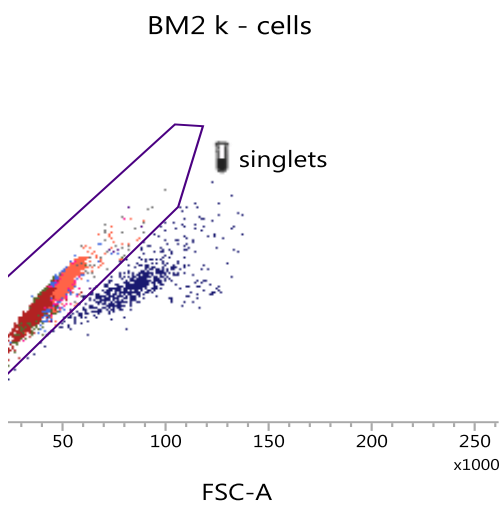


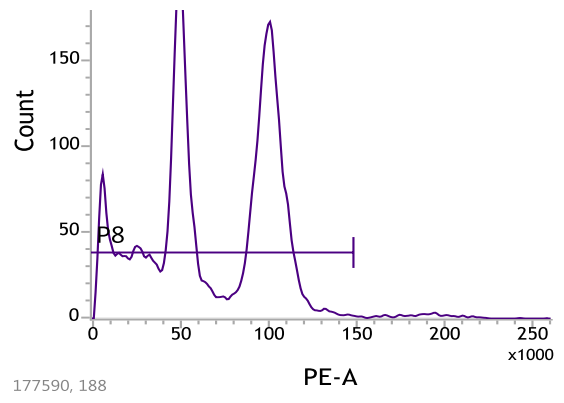
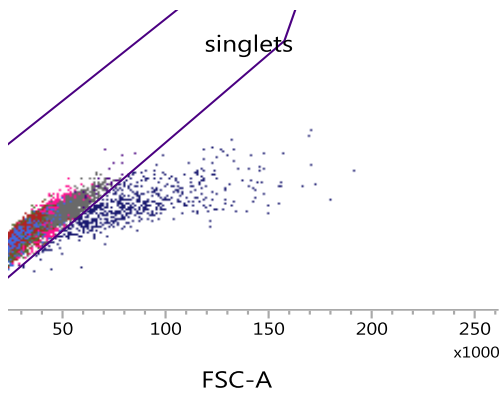
BM2 TPA - All Events





ioceno mnozstvi DNA v bunce (treti graf) - populace subG0/G1/S/G2M gates na poslednim grafu, procer





177590, 188

ita v tabulce

