

Quantitation Report

Experiment Information

Run Name	Run 2021-12-15-sk1_ACO3
Run Start	15.12.2021 10:53:27
Run Finish	15.12.2021 12:30:12
Operator	MP
Notes	
Run On Software Version	Rotor-Gene Q Software 2.0.2.4
Run Signature	The Run Signature is valid.
Gain Green	10,
Machine Serial No.	0911113

Quantitation Information

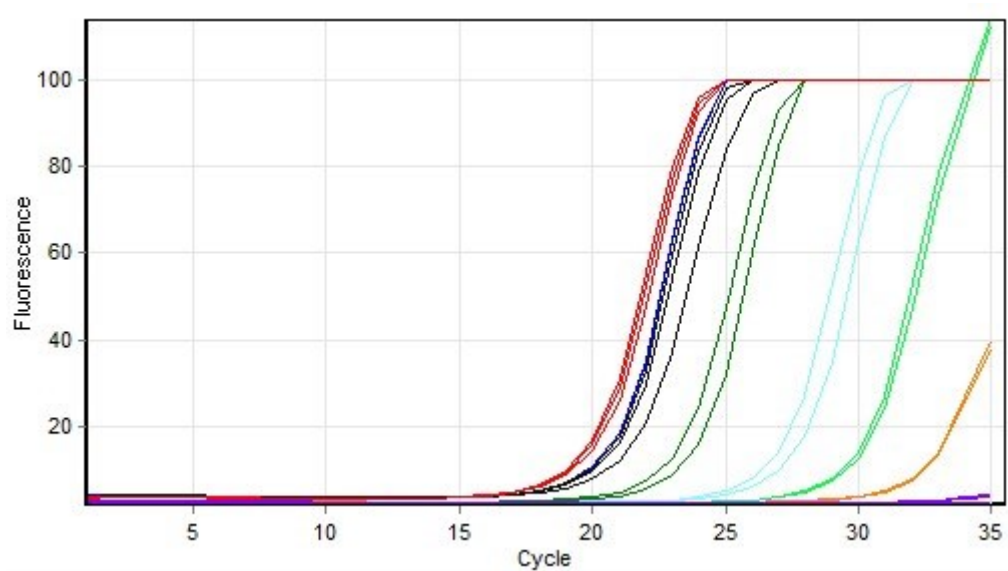
Threshold	0,030
Left Threshold	5,000
Standard Curve Imported	No
Standard Curve (1)	conc= 10 [^] (-0,345*CT + 9,177)
Standard Curve (2)	CT = -2,899*log(conc) + 26,608
Reaction efficiency (*)	(* = 10 [^] (-1/m) - 1) 1,21265
M	-2,89929
B	26,608
R Value	0,99608
R [^] 2 Value	0,99218
Start normalising from cycle	1
Noise Slope Correction	Yes
No Template Control Threshold	% 0
Reaction Efficiency Threshold	Disabled
Normalisation Method	Dynamic Tube Normalisation
Digital Filter	Light
Sample Page	Page 2
Imported Analysis Settings	

Profile

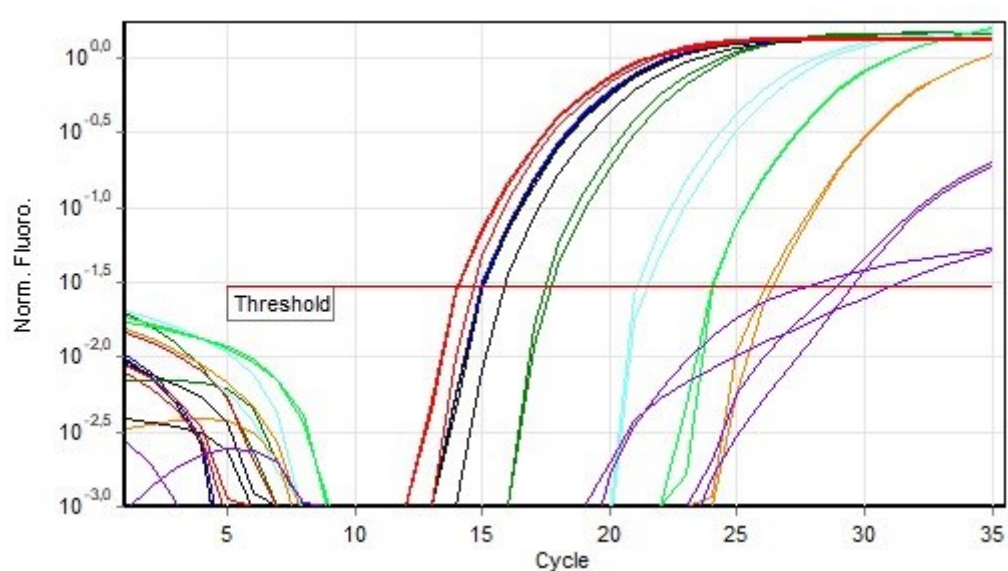
Cycle	Cycle Point
Hold 1	Hold @ 95°C, 10min 0s
Cycling (35 repeats)	Step 1: Hold @ 95°C, 15s
	Step 2: Hold @ 60°C, 30s, acquiring to Cycling A([Green][1][1])
	Step 3: Hold @ 72°C, 20s

Hold 2	Hold @ 72°C, 1min 0s
Melt	Ramp from 55°C to 90°C
	Hold for 90s on the 1st step
	Hold for 5s on next steps, Melt A([Green][1][1])

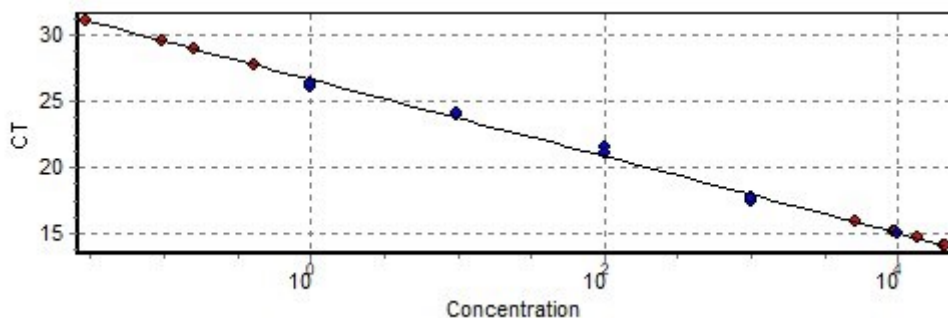
Raw Data For Cycling A.Green



Quantitation data for Cycling A.Green



Standard Curve



No.	Color	Name	Type	Ct	Ct Comment	Given Conc (IU/ml)	Calc Conc (IU/ml)
1	Blue	T6 1 1X	Standard	15,01		10 000	10 040
2	Blue	T6 1 1X	Standard	14,96		10 000	10 387
3	Green	T6 1 10x	Standard	17,40		1 000	1 504
4	Green	T6 1 10x	Standard	17,66		1 000	1 216
5	Cyan	T6 1 100x	Standard	21,47		100	59
6	Cyan	T6 1 100x	Standard	21,10		100	80
7	Light Green	T6 1 1000x	Standard	23,98		10	8
8	Light Green	T6 1 1000x	Standard	24,04		10	8
9	Orange	T6 1 10000x	Standard	26,11		1	1
10	Orange	T6 1 10000x	Standard	26,37		1	1
11	Purple	1 NK	Unknown	29,54			
12	Purple	1 NK	Unknown	27,71			
13	Black	D6 1 ACO3	Unknown	15,83			5 228
14	Black	D6 1 ACO3	Unknown	15,06			9 604
15	Black	D6 1 ACO3	Unknown	15,07			9 542
16	Red	B6 1 ACO3	Unknown	14,06			21 360
17	Red	B6 1 ACO3	Unknown	14,61			13 790
18	Red	B6 1 ACO3	Unknown	14,09			20 804
19	Purple	1 NK	Unknown	28,90			
20	Purple	1 NK	Unknown	31,06			

Warning: The following samples were not analysed :

21T6 2 10X- 22T6 2 10X- 23T6 2 1x- 24T6 2 1x- 25T6 2 100x- 26T6 2 100x- 27T6 2 1000x- 28T6 2 1000x- 29T6 2 10000x- 30T6 2 10000x- 312 NK- 322 NK- 33D6 2 ACO2- 34D6 2 ACO2- 35D6 2 ACO2- 362 NK- 37B6 2 ACO2- 38B6 2 ACO2- 39B6 2 ACO2- 402 NK- 41T6 3 1X- 42T6 3 1X- 43T6 3 10x- 44T6 3 10x- 45T6 3 100x- 46T6 3 100x- 47T6 3 1000x- 48T6 3 1000x- 49T6 3 10000x- 50T6 3 10000x- 513 NK- 523 NK- 53D6 3 ACO4- 54D6 3 ACO4- 55D6 3 ACO4- 563 NK- 57B6 3 ACO4- 58B6 3 ACO4- 59B6 3 ACO4- 603 NK

Legend:

NEG (NTC) - Sample cancelled due to NTC Threshold.

NEG (R. Eff) - Sample cancelled as efficiency less than reaction efficiency threshold.

