

Quantitation Report

Experiment Information

Run Name	Run 2021-12-15-sk3
Run Start	15.12.2021 10:53:27
Run Finish	15.12.2021 12:30:12
Operator	MP
Notes	
Run On Software Version	Rotor-Gene Q Software 2.0.2.4
Run Signature	The Run Signature is valid.
Gain Green	10,
Machine Serial No.	0911113

Quantitation Information

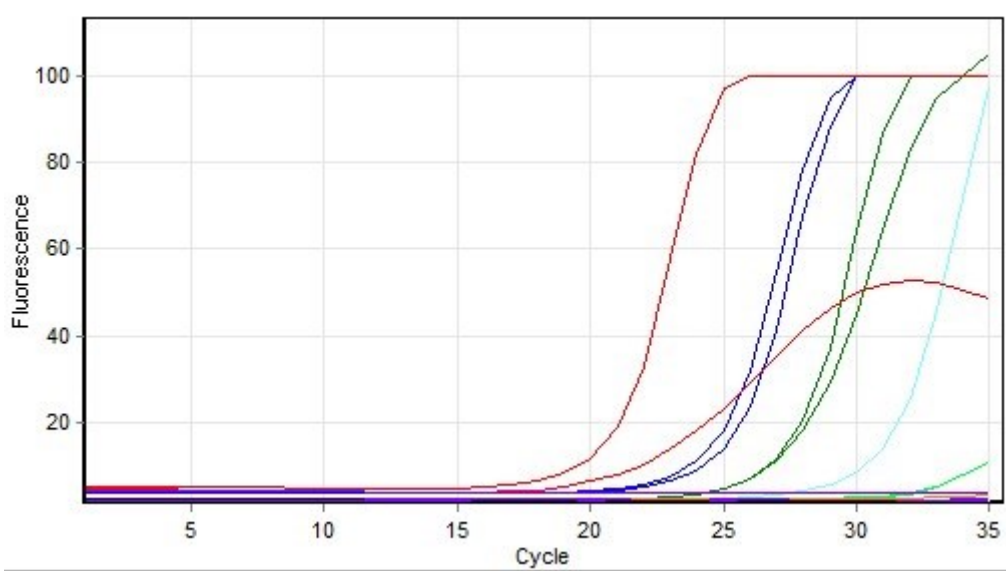
Threshold	0,030
Left Threshold	5,000
Standard Curve Imported	No
Standard Curve (1)	conc= 10 [^] (-0,360*CT + 10,759)
Standard Curve (2)	CT = -2,779*log(conc) + 29,898
Reaction efficiency (*)	(* = 10 [^] (-1/m) - 1) 1,29001
M	-2,77904
B	29,89843
R Value	0,99501
R [^] 2 Value	0,99004
Start normalising from cycle	1
Noise Slope Correction	Yes
No Template Control Threshold	% 0
Reaction Efficiency Threshold	Disabled
Normalisation Method	Dynamic Tube Normalisation
Digital Filter	Light
Sample Page	Page 2
Imported Analysis Settings	

Profile

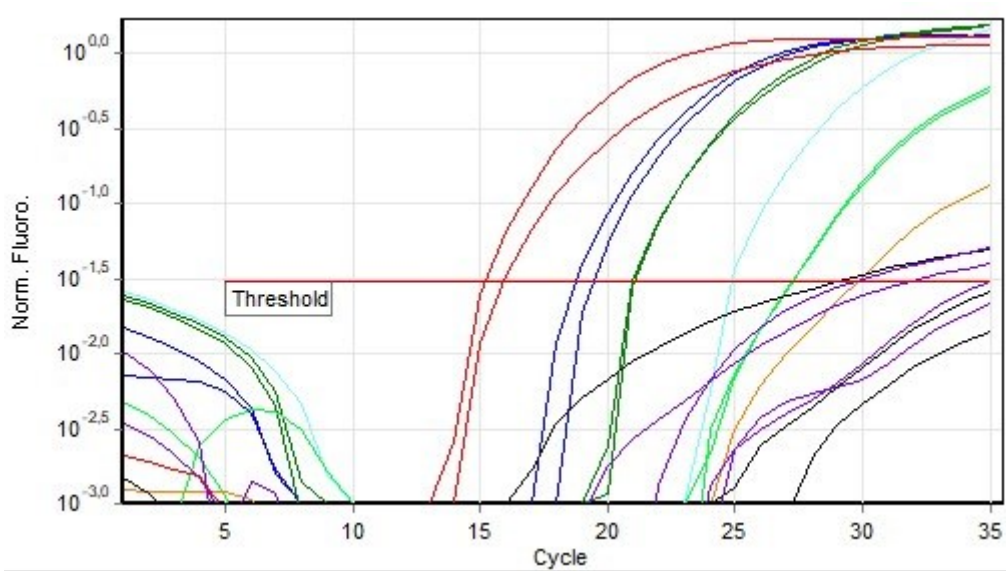
Cycle	Cycle Point
Hold 1	Hold @ 95°C, 10min 0s
Cycling (35 repeats)	Step 1: Hold @ 95°C, 15s
	Step 2: Hold @ 60°C, 30s, acquiring to Cycling A([Green][1][1])
	Step 3: Hold @ 72°C, 20s

Hold 2	Hold @ 72°C, 1min 0s
Melt	Ramp from 55°C to 90°C
	Hold for 90s on the 1st step
	Hold for 5s on next steps, Melt A([Green][1][1])

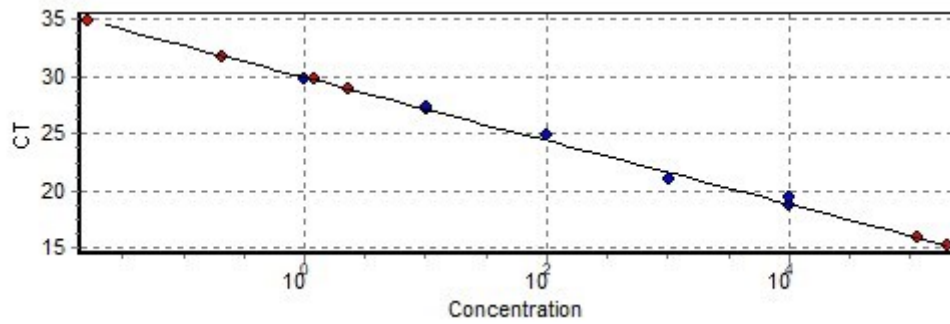
Raw Data For Cycling A.Green



Quantitation data for Cycling A.Green



Standard Curve



No.	Color	Name	Type	Ct	Ct Comment	Given Conc (IU/ml)	Calc Conc (IU/ml)
41	Blue	T6 3 1X	Standard	18,71		10 000	10 593
42	Blue	T6 3 1X	Standard	19,37		10 000	6 147
43	Green	T6 3 10x	Standard	20,99		1 000	1 603
44	Green	T6 3 10x	Standard	21,05		1 000	1 525
45	Cyan	T6 3 100x	Standard	24,83		100	67
47	Bright Green	T6 3 1000x	Standard	27,20		10	9
48	Bright Green	T6 3 1000x	Standard	27,22		10	9
49	Orange	T6 3 10000x	Standard	29,79		1	1
51	Purple	3 NK	Unknown	31,76			
52	Purple	3 NK	Unknown				
53	Black	D6 3 ACO4	Unknown				
54	Black	D6 3 ACO4	Unknown				
55	Black	D6 3 ACO4	Unknown	28,89			2
56	Purple	3 NK	Unknown	34,85			
58	Red	B6 3 ACO4	Unknown	15,87			111 541
59	Red	B6 3 ACO4	Unknown	15,17			199 580
60	Purple	3 NK	Unknown	29,68			1

Warning: The following samples were not analysed :

1T6 1 1X- 2T6 1 1X- 3T6 1 10x- 4T6 1 10x- 5T6 1 100x- 6T6 1 100x- 7T6 1 1000x- 8T6 1 1000x- 9T6 1 10000x- 10T6 1 10000x- 111 NK- 121 NK- 13D6 1 ACO3- 14D6 1 ACO3- 15D6 1 ACO3- 16B6 1 ACO3- 17B6 1 ACO3- 18B6 1 ACO3- 191 NK- 201 NK- 21T6 2 10X- 22T6 2 10X- 23T6 2 1x- 24T6 2 1x- 25T6 2 100x- 26T6 2 100x- 27T6 2 1000x- 28T6 2 1000x- 29T6 2 10000x- 30T6 2 10000x- 312 NK- 322 NK- 33D6 2 ACO2- 34D6 2 ACO2- 35D6 2 ACO2- 362 NK- 37B6 2 ACO2- 38B6 2 ACO2- 39B6 2 ACO2- 402 NK- 46T6 3 100x- 50T6 3 10000x- 57B6 3 ACO4

Legend:

NEG (NTC) - Sample cancelled due to NTC Threshold.

NEG (R. Eff) - Sample cancelled as efficiency less than reaction efficiency threshold.