

Quantitation Report

Experiment Information

Run Name	Run 2021-12-15-sk4
Run Start	15.12.2021 13:53:27
Run Finish	15.12.2021 15:40:16
Operator	MP
Notes	
Run On Software Version	Rotor-Gene Q Software 2.0.2.4
Run Signature	The Run Signature is valid.
Gain Green	10,
Machine Serial No.	0911113

Quantitation Information

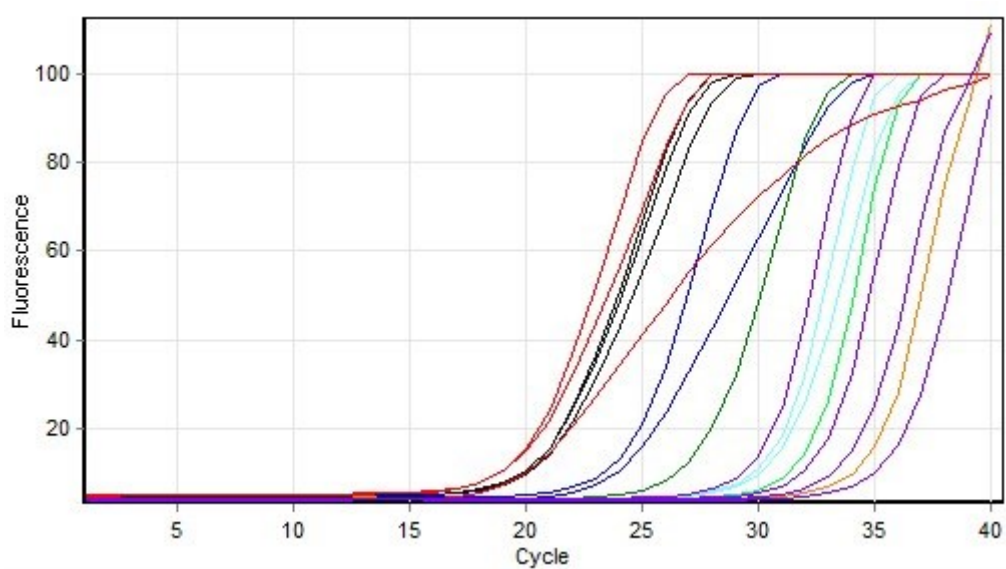
Threshold	0,030
Left Threshold	5,000
Standard Curve Imported	No
Standard Curve (1)	conc= 10 [^] (-0,385*CT + 11,417)
Standard Curve (2)	CT = -2,601*log(conc) + 29,692
Reaction efficiency (*)	(* = 10 [^] (-1/m) - 1) 1,42395
M	-2,60062
B	29,69225
R Value	0,9912
R [^] 2 Value	0,98247
Start normalising from cycle	1
Noise Slope Correction	Yes
No Template Control Threshold	% 0
Reaction Efficiency Threshold	Disabled
Normalisation Method	Dynamic Tube Normalisation
Digital Filter	Light
Sample Page	Page 2
Imported Analysis Settings	

Profile

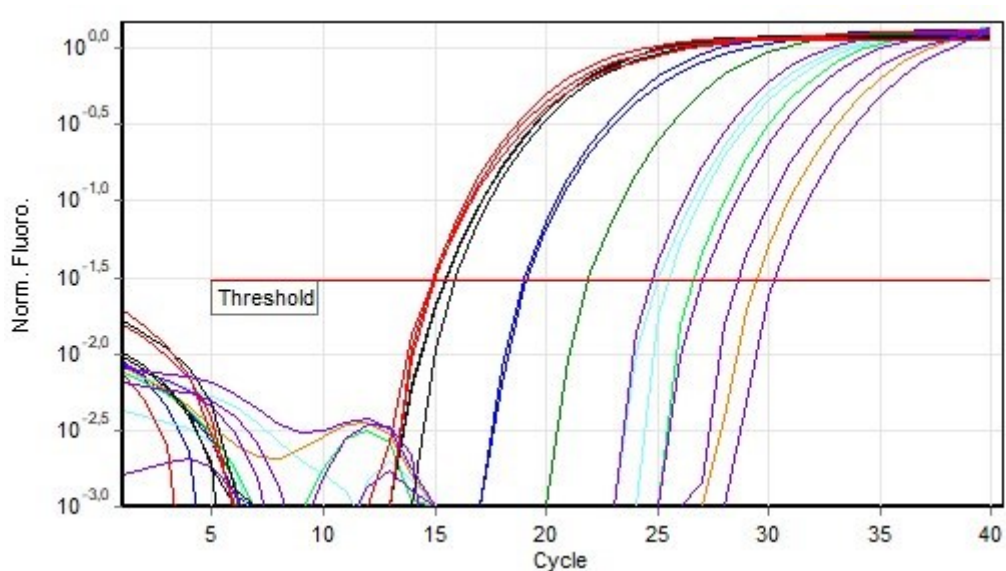
Cycle	Cycle Point
Hold 1	Hold @ 95°C, 10min 0s
Cycling (40 repeats)	Step 1: Hold @ 95°C, 15s
	Step 2: Hold @ 60°C, 30s, acquiring to Cycling A([Green][1][1])
	Step 3: Hold @ 72°C, 20s

Hold 2	Hold @ 72°C, 1min 0s
Melt	Ramp from 55°C to 90°C
	Hold for 90s on the 1st step
	Hold for 5s on next steps, Melt A([Green][1][1])

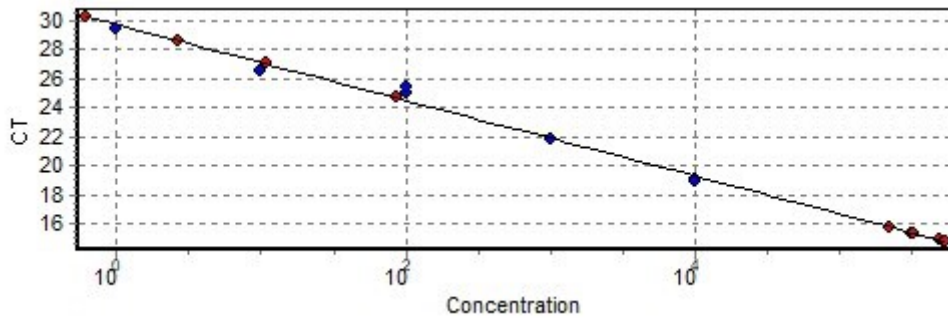
Raw Data For Cycling A.Green



Quantitation data for Cycling A.Green



Standard Curve



No.	Color	Name	Type	Ct	Ct Comment	Given Conc (IU/ml)	Calc Conc (IU/ml)
1	Blue	T6 1X	Standard	19,08		10 000	12 019
2	Blue	T6 1X	Standard	18,96		10 000	13 416
3	Green	T6 10x	Standard	21,86		1 000	1 029
5	Cyan	T6 100x	Standard	24,96		100	66
6	Cyan	T6 100x	Standard	25,42		100	44
8	Red	T6 1000x	Standard	26,55		10	16
9	Orange	T6 10000x	Standard	29,41		1	1
11	Purple	NK	Unknown	26,99			11
12	Purple	NK	Unknown	24,67			86
13	Black	D6 ACO1	Unknown	15,83			213 139
14	Black	D6 ACO1	Unknown	15,39			316 627
15	Black	D6 ACO1	Unknown	15,43			306 029
16	Red	B6 ACO1	Unknown	14,86			505 533
17	Red	B6 ACO1	Unknown	14,91			481 729
18	Red	B6 ACO1	Unknown	14,82			523 783
19	Purple	NK	Unknown	28,58			3
20	Purple	NK	Unknown	30,22			1

Warning: The following samples were not analysed :

4T6 10x- 7T6 1000x- 10T6 10000x- 21T6 1X- 22T6 1X- 23T6 10x- 24T6 10x- 25T6 100x- 26T6 100x- 27T6 1000x- 28T6 1000x- 29T6 10000x- 30T6 10000x- 31NK- 32NK- 33D6 ACO5- 34D6 ACO5- 35D6 ACO5- 36B6 ACO5- 37B6 ACO5- 38B6 ACO5- 39NK- 40NK- 41T6 1X- 42T6 1X- 43T6 10x- 44T6 10x- 45T6 100x- 46T6 100x- 47T6 1000x- 48T6 1000x- 49T6 10000x- 50T6 10000x- 51NK- 52NK- 53D6 UBC10- 54D6 UBC10- 55D6 UBC10- 56B6 UBC10- 57B6 UBC10- 58B6 UBC10- 59NK- 60NK

Legend:

NEG (NTC) - Sample cancelled due to NTC Threshold.

NEG (R. Eff) - Sample cancelled as efficiency less than reaction efficiency threshold.