



# Quantitation Report

## Experiment Information

Run Name	Run 2021-12-15-sk5
Run Start	15.12.2021 13:53:27
Run Finish	15.12.2021 15:40:16
Operator	MP
Notes	
Run On Software Version	Rotor-Gene Q Software 2.0.2.4
Run Signature	The Run Signature is valid.
Gain Green	10,
Machine Serial No.	0911113

## Quantitation Information

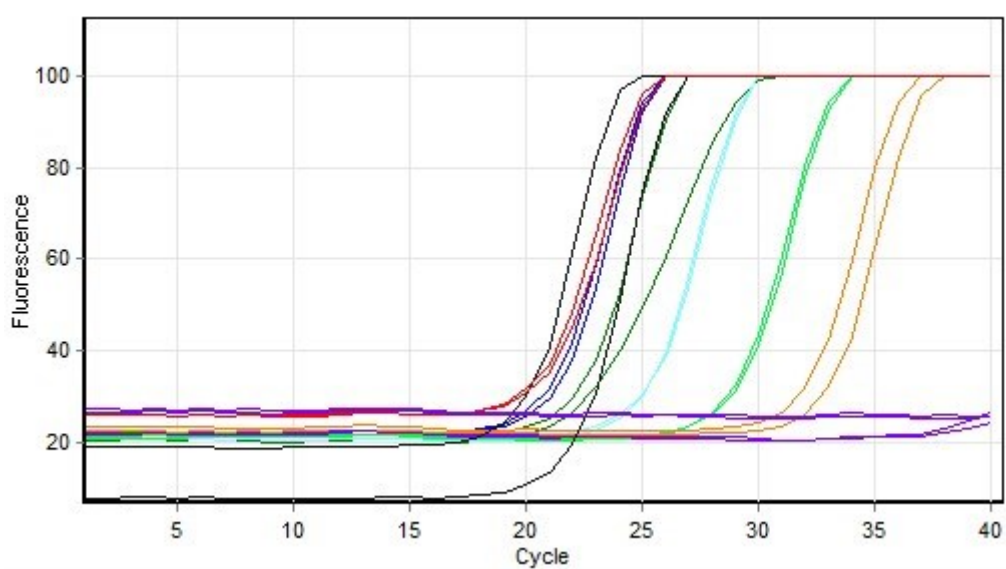
Threshold	0,030
Left Threshold	5,000
Standard Curve Imported	No
Standard Curve (1)	$\text{conc} = 10^{(-0,353 \cdot \text{CT} + 9,871)}$
Standard Curve (2)	$\text{CT} = -2,835 \cdot \log(\text{conc}) + 27,982$
Reaction efficiency (*)	$(* = 10^{(-1/m)} - 1)$ 1,25309
M	-2,83464
B	27,98183
R Value	0,98111
R <sup>2</sup> Value	0,96257
Start normalising from cycle	1
Noise Slope Correction	Yes
No Template Control Threshold	% 0
Reaction Efficiency Threshold	Disabled
Normalisation Method	Dynamic Tube Normalisation
Digital Filter	Light
Sample Page	Page 2
Imported Analysis Settings	

## Profile

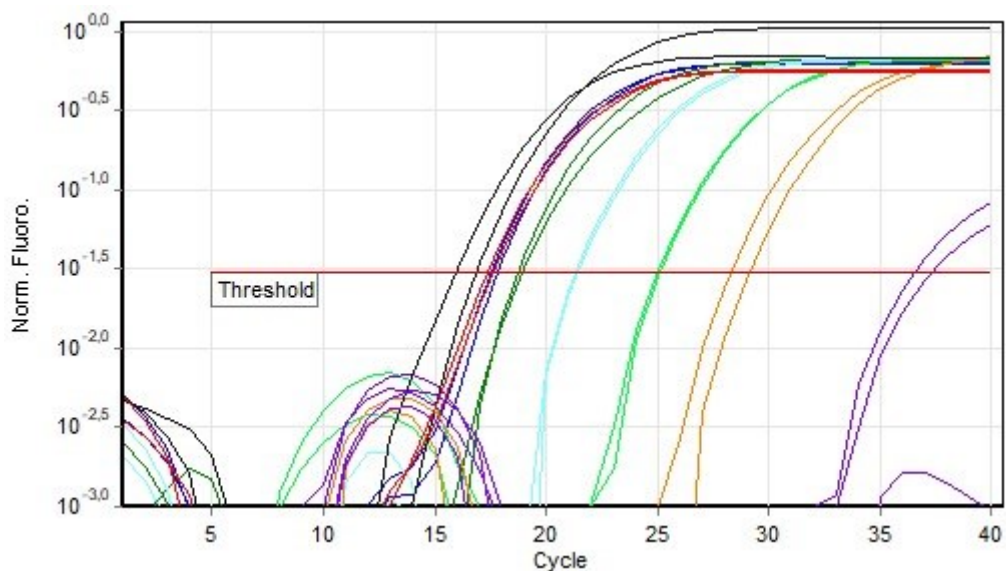
Cycle	Cycle Point
Hold 1	Hold @ 95°C, 10min 0s
Cycling (40 repeats)	Step 1: Hold @ 95°C, 15s
	Step 2: Hold @ 60°C, 30s, acquiring to Cycling A([Green][1][1])
	Step 3: Hold @ 72°C, 20s

Hold 2	Hold @ 72°C, 1min 0s
Melt	Ramp from 55°C to 90°C
	Hold for 90s on the 1st step
	Hold for 5s on next steps,Melt A([Green][1][1])

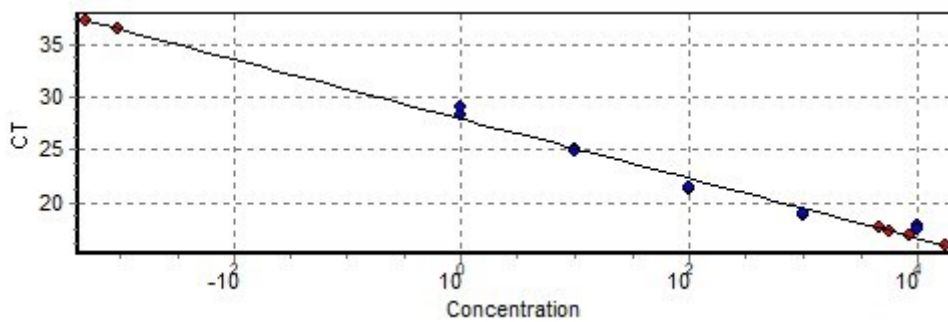
### Raw Data For Cycling A.Green



### Quantitation data for Cycling A.Green



### Standard Curve



No.	Color	Name	Type	Ct	Ct Comment	Given Conc (IU/ml)	Calc Conc (IU/ml)
21	Blue	T6 1X	Standard	17,79		10 000	3 926
22	Blue	T6 1X	Standard	17,50		10 000	4 966
23	Green	T6 10x	Standard	18,72		1 000	1 852
24	Green	T6 10x	Standard	18,90		1 000	1 601
25	Cyan	T6 100x	Standard	21,33		100	221
26	Cyan	T6 100x	Standard	21,41		100	208
27	Red	T6 1000x	Standard	25,06		10	11
28	Red	T6 1000x	Standard	24,96		10	12
29	Orange	T6 10000x	Standard	28,30		1	1
30	Orange	T6 10000x	Standard	29,14		1	
31	Purple	NK	Unknown	37,32			
32	Purple	NK	Unknown	36,51			
34	Black	D6 ACO5	Unknown	16,83			8 608
35	Black	D6 ACO5	Unknown	15,93			17 872
37	Red	B6 ACO5	Unknown	17,34			5 676
38	Red	B6 ACO5	Unknown	17,60			4 615
39	Purple	NK	Unknown				
40	Purple	NK	Unknown				

**Warning: The following samples were not analysed :**

1T6 1X- 2T6 1X- 3T6 10x- 4T6 10x- 5T6 100x- 6T6 100x- 7T6 1000x- 8T6 1000x- 9T6 10000x- 10T6 10000x- 11NK- 12NK- 13D6 ACO1- 14D6 ACO1- 15D6 ACO1- 16B6 ACO1- 17B6 ACO1- 18B6 ACO1- 19NK- 20NK- 33D6 ACO5- 36B6 ACO5- 41T6 1X- 42T6 1X- 43T6 10x- 44T6 10x- 45T6 100x- 46T6 100x- 47T6 1000x- 48T6 1000x- 49T6 10000x- 50T6 10000x- 51NK- 52NK- 53D6 UBC10- 54D6 UBC10- 55D6 UBC10- 56B6 UBC10- 57B6 UBC10- 58B6 UBC10- 59NK- 60NK

**Legend:**

NEG (NTC) - Sample cancelled due to NTC Threshold.

NEG (R. Eff) - Sample cancelled as efficiency less than reaction efficiency threshold.