

CG920 Genomics

Lesson 11

Systems Biology

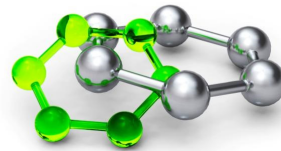
Jan Hejátko

Functional Genomics and Proteomics of Plants,
CEITEC - Central European Institute of Technology
And

National Centre for Bimolecular Research,
Faculty of Science,

MUNI
SCI

Masaryk University, Brno
hejatko@sci.muni.cz, www.ceitec.eu



Literature

- Literature sources for Chapter 12:

- Wilt, F.H., and Hake, S. (2004). [Principles of Developmental Biology](#). (New York ; London: W. W. Norton)
- Eden, E., Navon, R., Steinfeld, I., Lipson, D., and Yakhini, Z. (2009). GOrilla: a tool for discovery and visualization of enriched GO terms in ranked gene lists. *BMC Bioinformatics* 10, 48.
- The Arabidopsis Genome Initiative. (2000). Analysis of the genome sequence of the flowering plant *Arabidopsis thaliana*. *Nature* 408, 796-815.
- Benitez, M. and Hejatko, J. Dynamics of cell-fate determination and patterning in the vascular bundles of *Arabidopsis thaliana* (submitted)
- de Luis Balaguer MA, Fisher AP, Clark NM, Fernandez-Espinosa MG, Moller BK, Weijers D, Lohmann JU, Williams C, Lorenzo O, Sozzani R. 2017. Predicting gene regulatory networks by combining spatial and temporal gene expression data in *Arabidopsis* root stem cells. *Proc Natl Acad Sci U S A* 114(36): E7632-E7640.

Outline

- Definition of **Systems Biology**
- Tools
 - **Gene Ontology Analysis**
 - **Bayesian Networks**
 - **Molecular/Gene Regulatory Networks Modeling**
 - **Inferring Gene Regulatory Networks from Large Omics Datasets**

Definition

Systems biology is the computational and mathematical analysis and modeling of complex biological systems. It is a biology-based interdisciplinary field of study that focuses on complex interactions within biological systems, using a holistic approach (holism instead of the more traditional reductionism) to biological research (Wikipedia).

Definition

Systems biology is the study of biological systems whose behaviour cannot be reduced to the linear sum of their parts' functions. Systems biology does not necessarily involve large numbers of components or vast datasets, as in genomics or connectomics, but often requires quantitative modelling methods borrowed from physics (Nature).

Definition

Nice explanatory video by Dr. Nathan Price, associate director of the Institute for Systems Biology at https://www.youtube.com/watch?v=OrXRI_8UFHU.



6

CEITEC

Outline

- Definition of Systems Biology
- Tools
 - Gene Ontology analysis

Results of -omics Studies vs Biologically Relevant Conclusions

- Results of **-omics studies** represent **huge amount of data**, e.g. genes with differential expression. But how to get any **biologically relevant conclusions** out of it?

Ddii et al., *unpublished*

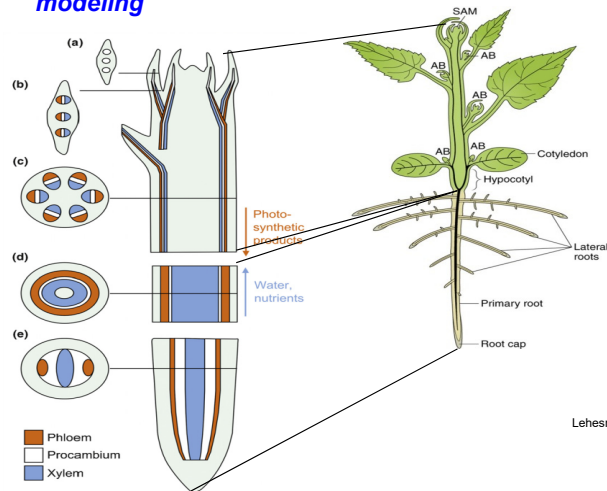
| gene | locus | sample_1 | sample_2 | status | value_1 | value_2 | log2(fold_change) | test_stat | p_value | q_value | significant |
|-----------|---------------------|----------|----------|--------|------------|----------|-------------------|--------------|-------------|-------------|-------------|
| AT1G07795 | 1:2414285-2414967 | WT | MT | OK | 0 | 1.1804 | 1.79769e+308 | 1.79769e+308 | 6.88885e-05 | 0.00039180 | 1 yes |
| HRS1 | 1:4556891-4558708 | WT | MT | OK | 0 | 0.696583 | 1.79769e+308 | 1.79769e+308 | 4.67708e-08 | 6.61994e-08 | 5 yes |
| ATML014 | 1:9227472-9232296 | WT | MT | OK | 0 | 0.514809 | 1.79769e+308 | 1.79769e+308 | 9.74219e-05 | 0.00053505 | 5 yes |
| NRT1.6 | 1:9400663-9403789 | WT | MT | OK | 0 | 0.877865 | 1.79769e+308 | 1.79769e+308 | 3.2692e-08 | 3.50131e-07 | 7 yes |
| AT1G27570 | 1:9575425-9582376 | WT | MT | OK | 0 | 2.0829 | 1.79769e+308 | 1.79769e+308 | 9.76039e-06 | 6.647e-05 | yes |
| AT1G60095 | 1:22159735-22162419 | WT | MT | OK | 0 | 0.688588 | 1.79769e+308 | 1.79769e+308 | 9.94952e-08 | 9.95901e-08 | 7 yes |
| AT1G03020 | 1:698206-698515 | WT | MT | OK | 0 | 1.78859 | 1.79769e+308 | 1.79769e+308 | 0.00913915 | 0.0277958 | yes |
| AT1G13609 | 1:4662720-4663471 | WT | MT | OK | 0 | 3.55814 | 1.79769e+308 | 1.79769e+308 | 0.00021683 | 0.00108079 | yes |
| AT1G21550 | 1:7553100-7553876 | WT | MT | OK | 0 | 0.562868 | 1.79769e+308 | 1.79769e+308 | 0.00115582 | 0.00471497 | yes |
| AT1G22120 | 1:7806308-7806632 | WT | MT | OK | 0 | 0.617354 | 1.79769e+308 | 1.79769e+308 | 2.48392e-06 | 0.05 | yes |
| AT1G31370 | 1:11238297-11239363 | WT | MT | OK | 0 | 1.46254 | 1.79769e+308 | 1.79769e+308 | 4.83523e-05 | 0.00028514 | 3 yes |
| APUM10 | 1:13253397-13255570 | WT | MT | OK | 0 | 0.581031 | 1.79769e+308 | 1.79769e+308 | 7.87855e-06 | 0.05 | yes |
| AT1G48700 | 1:18010728-18012871 | WT | MT | OK | 0 | 0.556525 | 1.79769e+308 | 1.79769e+308 | 6.53917e-05 | 0.00037473 | 6 yes |
| AT1G59077 | 1:21746209-21833195 | WT | MT | OK | 0 | 138.886 | 1.79769e+308 | 1.79769e+308 | 0.00122789 | 0.00496816 | yes |
| AT1G60050 | 1:22121549-22123702 | WT | MT | OK | 0 | 0.370087 | 1.79769e+308 | 1.79769e+308 | 0.00117953 | 0.0048001 | yes |
| AT4G15242 | 4:8705786-8706997 | WT | MT | OK | 0.00930712 | 17.9056 | 10.9098 | -4.40523 | 1.05673e-05 | 7.13983e-05 | yes |
| ATS33251 | 5:12499071-12500433 | WT | MT | OK | 0.0498375 | 52.2837 | 10.0349 | -9.8119 | 0 | 0 | yes |
| AT4G12520 | 4:7421055-7421738 | WT | MT | OK | 0.0195111 | 15.8516 | 9.66612 | -3.90043 | 9.60217e-05 | 0.000528904 | yes |
| AT1G60020 | 1:22100651-22105276 | WT | MT | OK | 0.0118377 | 7.18823 | 9.24611 | -7.50382 | 6.19504e-14 | 1.4989e-12 | yes |
| ATS315360 | 5:4987235-4989182 | WT | MT | OK | 0.0988273 | 56.4834 | 9.1587 | -10.4392 | 0 | 0 | yes |

8

Example of an output of transcriptional profiling study using Illumina sequencing performed in our lab. Shown is just a tiny fragment of the complete list, comprising about 7K genes revealing differential expression in the studied mutant.

Plant Vascular Tissue Development

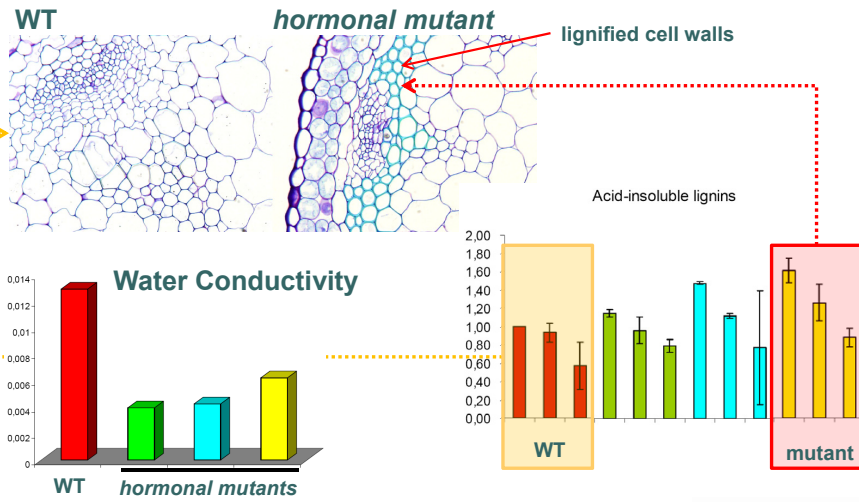
- **Vascular tissue** as a developmental model for **GO analysis** and **MRN modeling**



Lehesranta et al., *Trends in Plant Sci* (2010)

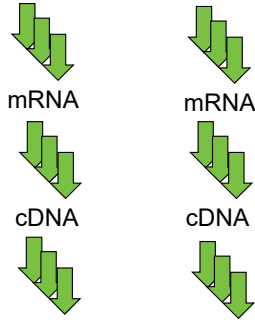
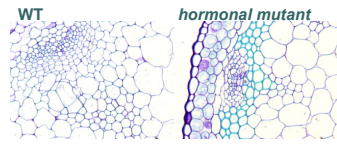
Hormonal Control Over Vascular Tissue Development

- Plant **Hormones Regulate Lignin Deposition** in Plant Cell Walls and **Xylem Water Conductivity**



Hormonal Control Over Vascular Tissue Development

- *Transcriptional profiling* via *RNA sequencing*



Sequencing by Illumina and **number of transcripts** determination

Results of -omics Studies vs Biologically Relevant Conclusions

- Transcriptional profiling yielded more than **9K differentially regulated genes...**

Ddii et al., *unpublished*

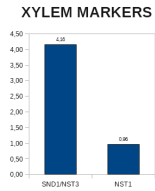
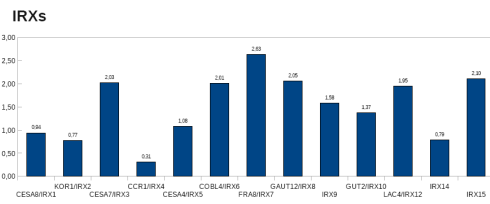
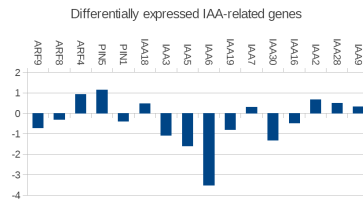
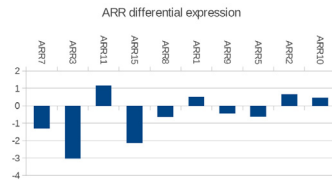
| gene | locus | sample_1 | sample_2 | status | value_1 | value_2 | log2(fold_change) | test_stat | p_value | q_value | significant |
|-----------|---------------------|----------|----------|--------|------------|----------|-------------------|--------------|-------------|-------------|-------------|
| AT1G07795 | 1:2414285-2414967 | WT | MT | OK | 0 | 1.1804 | 1.79769e+308 | 1.79769e+308 | 6.88885e-05 | 0.00039180 | 1 yes |
| HRS1 | 1:4556891-4558708 | WT | MT | OK | 0 | 0.696583 | 1.79769e+308 | 1.79769e+308 | 4.67708e-08 | 4.67708e-08 | yes |
| ATML014 | 1:9227472-9232296 | WT | MT | OK | 0 | 0.514609 | 1.79769e+308 | 1.79769e+308 | 9.74219e-05 | 0.00053505 | 5 yes |
| NRT1.6 | 1:9400663-9403789 | WT | MT | OK | 0 | 0.877865 | 1.79769e+308 | 1.79769e+308 | 3.2692e-08 | 3.50131e-07 | yes |
| AT1G27570 | 1:9575425-9582376 | WT | MT | OK | 0 | 2.0829 | 1.79769e+308 | 1.79769e+308 | 9.76039e-06 | 6.647e-05 | yes |
| AT1G60095 | 1:22159735-22162419 | WT | MT | OK | 0 | 0.688588 | 1.79769e+308 | 1.79769e+308 | 9.94952e-08 | 9.95901e-08 | yes |
| AT1G03020 | 1:698206-698515 | WT | MT | OK | 0 | 1.78859 | 1.79769e+308 | 1.79769e+308 | 0.00913915 | 0.0277958 | yes |
| AT1G13609 | 1:4662720-4663471 | WT | MT | OK | 0 | 3.55814 | 1.79769e+308 | 1.79769e+308 | 0.00021683 | 0.00108079 | yes |
| AT1G21550 | 1:7553100-7553876 | WT | MT | OK | 0 | 0.562868 | 1.79769e+308 | 1.79769e+308 | 0.00115582 | 0.00471497 | yes |
| AT1G22120 | 1:7806308-7806632 | WT | MT | OK | 0 | 0.617354 | 1.79769e+308 | 1.79769e+308 | 2.48392e-06 | 1.91089e-05 | yes |
| AT1G31370 | 1:11238297-11239363 | WT | MT | OK | 0 | 1.46254 | 1.79769e+308 | 1.79769e+308 | 4.83523e-05 | 0.00028514 | 3 yes |
| APUM10 | 1:13253397-13255570 | WT | MT | OK | 0 | 0.581031 | 1.79769e+308 | 1.79769e+308 | 7.87855e-06 | 5.46603e-05 | yes |
| AT1G48700 | 1:18010728-18012871 | WT | MT | OK | 0 | 0.556525 | 1.79769e+308 | 1.79769e+308 | 6.53917e-05 | 0.00037473 | 6 yes |
| AT1G59077 | 1:21746209-21833195 | WT | MT | OK | 0 | 138.886 | 1.79769e+308 | 1.79769e+308 | 0.00122789 | 0.00496816 | yes |
| AT1G60050 | 1:22121549-22123702 | WT | MT | OK | 0 | 0.370087 | 1.79769e+308 | 1.79769e+308 | 0.00117953 | 0.0048001 | yes |
| AT4G15242 | 4:8705786-8706997 | WT | MT | OK | 0.00930712 | 17.9056 | 10.9098 | -4.40523 | 1.05673e-05 | 7.13983e-05 | yes |
| ATS33251 | 5:12499071-12500433 | WT | MT | OK | 0.0498375 | 52.2837 | 10.0349 | -9.8119 | 0 | 0 | yes |
| AT4G12520 | 4:7421055-7421738 | WT | MT | OK | 0.0195111 | 15.8516 | 9.66612 | -3.90043 | 9.60217e-05 | 0.000528904 | yes |
| AT1G60020 | 1:22100651-22105276 | WT | MT | OK | 0.0118377 | 7.18823 | 9.24611 | -7.50382 | 6.19504e-14 | 1.4989e-12 | yes |
| ATS315360 | 5:4987235-4989182 | WT | MT | OK | 0.0988273 | 56.4834 | 9.1587 | -10.4392 | 0 | 0 | yes |

12

Example of an output of transcriptional profiling study using Illumina sequencing performed in our lab. Shown is just a tiny fragment of the complete list, comprising about 7K genes revealing differential expression in the studied mutant.

Gene Ontology Analysis

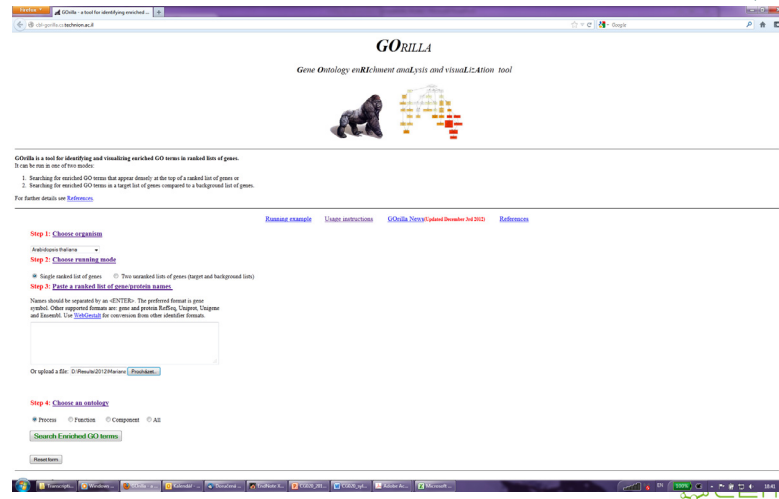
- One of the possible approaches is to study *gene ontology*, i.e. previously demonstrated **association** of genes to **biological processes**



Gene Ontology Analysis

- Several tools allow **statistical evaluation** of **enrichment** for genes **associated with specific processes**

Eden et al., *BMC Bioinformatics* (2009)

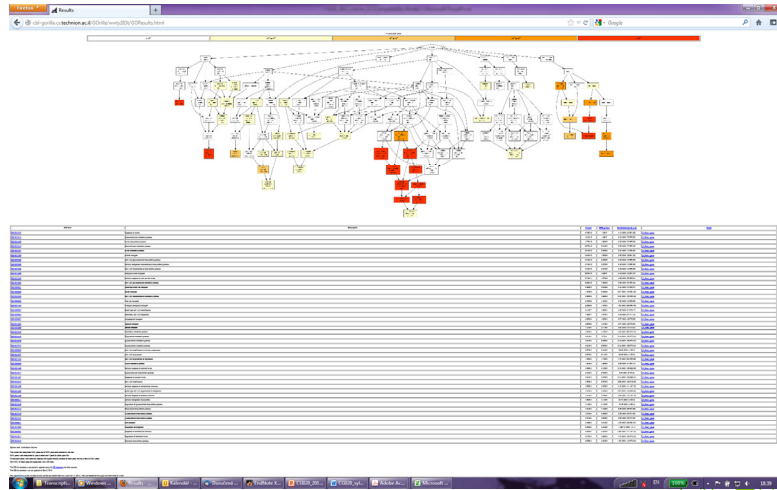


14

One of such recent and very useful tools is Gorilla software, freely available at <http://cbl-gorilla.cs.technion.ac.il/>.

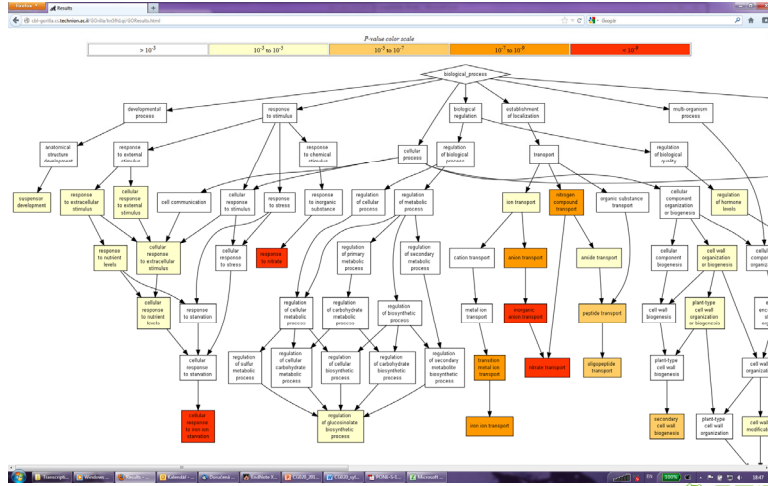
Gene Ontology Analysis

- Several tools allow **statistical evaluation** of **enrichment** for genes **associated with specific processes**



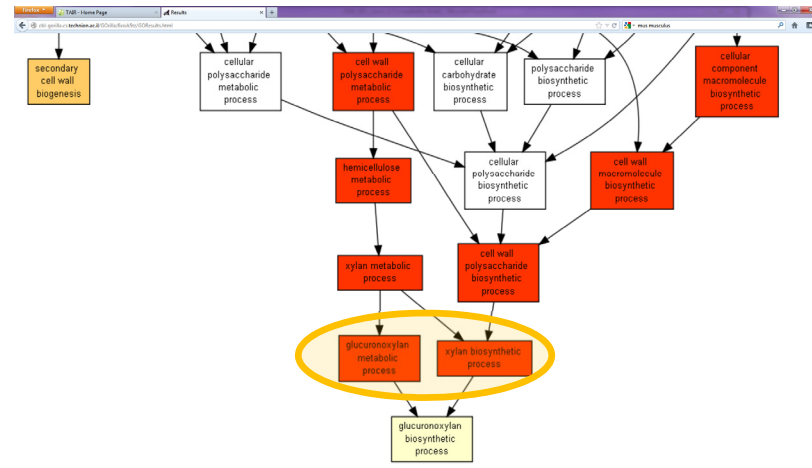
Gene Ontology Analysis

- Several tools allow **statistical evaluation** of **enrichment** for genes **associated with specific processes**



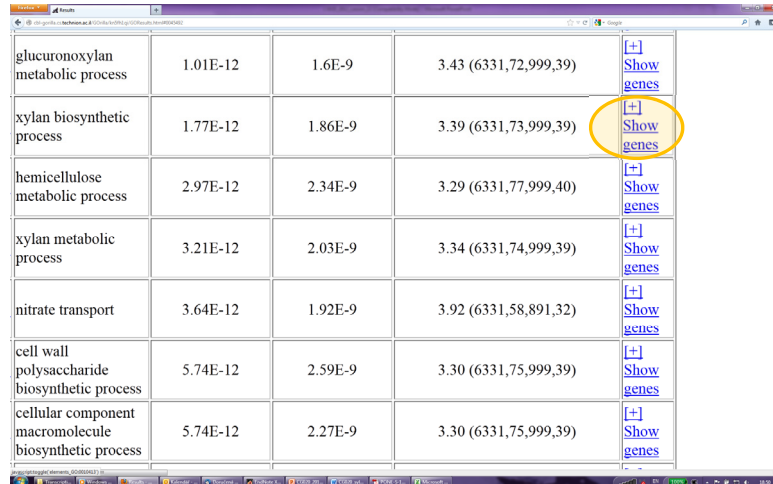
Gene Ontology Analysis

- Several tools allow **statistical evaluation** of **enrichment** for genes **associated with specific processes**



Gene Ontology Analysis

- Several tools allow **statistical evaluation** of **enrichment** for genes **associated with specific processes**



| | | | | |
|---|----------|---------|-----------------------|----------------|
| glucuronoxylan metabolic process | 1.01E-12 | 1.6E-9 | 3.43 (6331,72,999,39) | [+] Show genes |
| xylan biosynthetic process | 1.77E-12 | 1.86E-9 | 3.39 (6331,73,999,39) | [+] Show genes |
| hemicellulose metabolic process | 2.97E-12 | 2.34E-9 | 3.29 (6331,77,999,40) | [+] Show genes |
| xylan metabolic process | 3.21E-12 | 2.03E-9 | 3.34 (6331,74,999,39) | [+] Show genes |
| nitrate transport | 3.64E-12 | 1.92E-9 | 3.92 (6331,58,891,32) | [+] Show genes |
| cell wall polysaccharide biosynthetic process | 5.74E-12 | 2.59E-9 | 3.30 (6331,75,999,39) | [+] Show genes |
| cellular component macromolecule biosynthetic process | 5.74E-12 | 2.27E-9 | 3.30 (6331,75,999,39) | [+] Show genes |

Gene Ontology Analysis

- Several tools allow **statistical evaluation** of **enrichment** for genes **associated with specific processes**

| Description | P-value | FDR q-value | Enrichment (N, B, n, b) | Genes |
|----------------------------------|----------|-------------|-------------------------|--------------------------------|
| response to nitrate | 4.76E-13 | 1.5E-9 | 4.13 (6331,55,891,32) | [+] Show genes |
| glucuronoxylan metabolic process | 1.01E-12 | 1.6E-9 | 3.43 (6331,72,999,39) | [+] Show genes |
| xylan biosynthetic process | 1.77E-12 | 1.86E-9 | 3.39 (6331,73,999,39) | [+] Show genes |

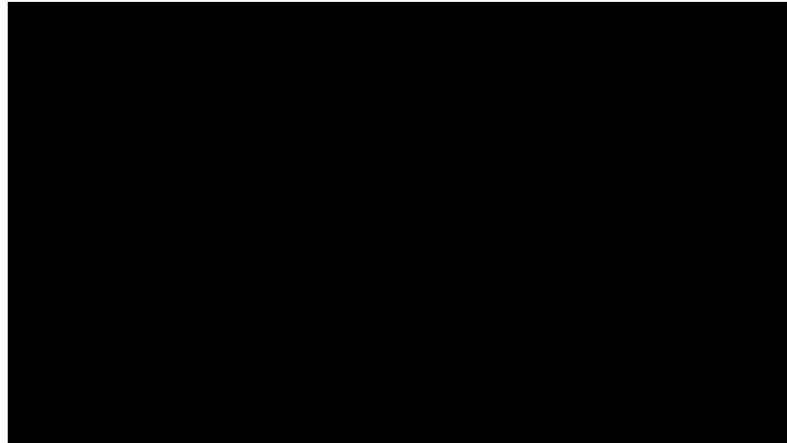
The screenshot shows a detailed list of genes associated with the 'xylan biosynthetic process' in the right-hand pane, including genes like SUPT7, plant glycosyltransferase, and various xylanase and xylosyltransferase enzymes.

Outline

- Definition of Systems Biology
- Tools
 - Gene Ontology analysis
 - Bayesian Networks

Bayesian Networks

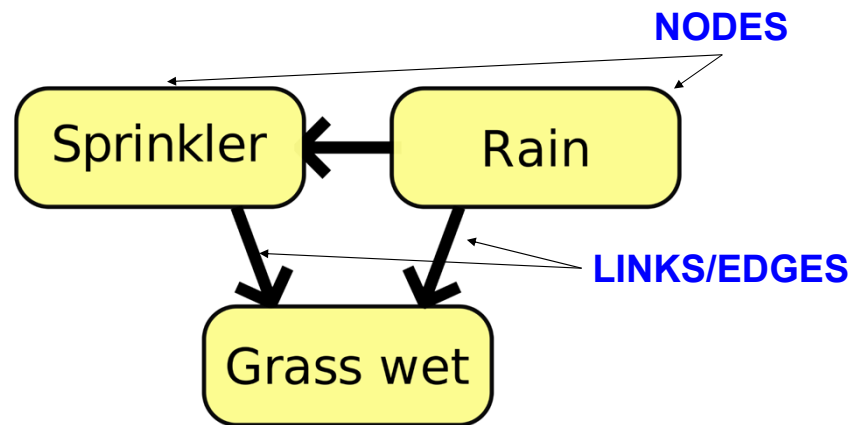
- What are Bayesian networks?
 - Probabilistic Graphical Model that can be used to build models from data and/or expert opinion



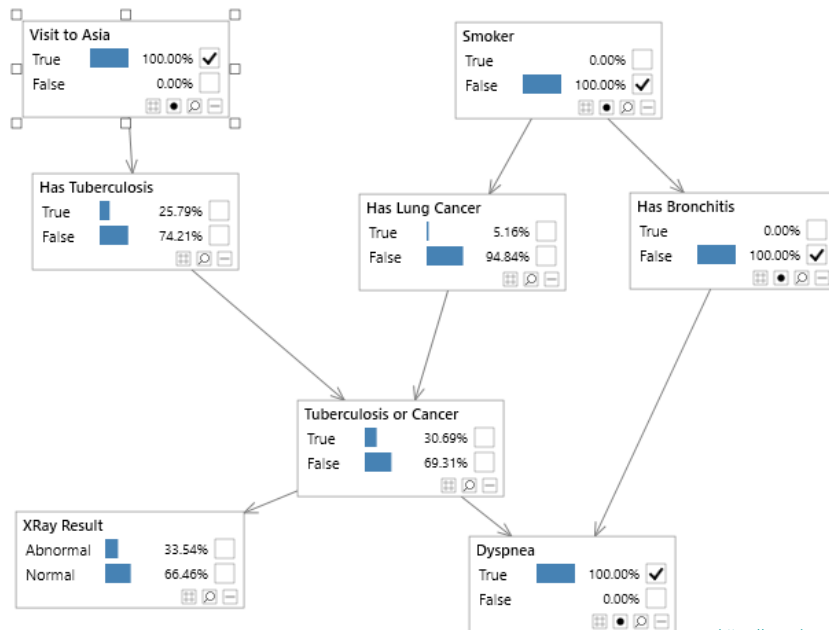
Bayesian Networks

- What are **Bayesian Networks**?
 - **Probabilistic Graphical Model** that can be used to **build models from data** and/or **expert opinion**
 - can be used for a wide range of tasks including **prediction, anomaly detection, diagnostics, automated insight, reasoning, time series prediction** and **decision making under uncertainty**
- **NODES**
 - each node represents a **variable** such as someone's height, age or gender. A variable might be discrete, such as Gender = {Female, Male} or might be continuous such as someone's age
- **LINKS**
 - added **between nodes** to indicate that **one node** directly **influences** the **other**

Bayesian Networks



Asia Bayesian Network



24

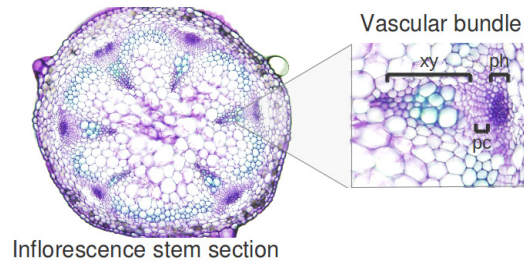

<https://www.bayesserver.com/>

Outline

- Definition of Systems Biology
- Tools
 - Gene Ontology analysis
 - Bayesian Networks
 - Molecular/Gene Regulatory Networks Modeling

Molecular Regulatory Networks Modeling

- **Vascular tissue** as a developmental model for **MRN modeling**



Benitez and Hejatko, *PLoS One*, 2013

Molecular Regulatory Networks Modeling

- **Literature search** for published data and **creating small database**

| Interaction | Evidence | References |
|------------------------|---|------------|
| A-ARRs – CK signaling | Double and higher order type-A ARR mutants show increased sensitivity to CK. | [27] |
| | Spatial patterns of A-type ARR gene expression and CK response are consistent with partially redundant function of these genes in CK signaling. | [27] |
| | A-type ARRs decreases B-type ARR6-LUC. | [13] |
| | Note: In certain contexts, however, some A-ARRs appear to have effects antagonistic to other A-ARRs. | [27] |
| AHP6 – AHP | ahp6 partially recovers the mutant phenotype of the CK receptor WOL. | [9] |
| | Using an in vitro phosphotransfer system, it was shown that, unlike the AHPs, native AHP6 was unable to accept a phosphoryl group. Nevertheless, AHP6 is able to inhibit phosphotransfer from other AHPs to ARRs. | [9] |

Benitez and Hejatko, *PLoS One*, 2011

CEITEC

Molecular Regulatory Networks Modeling

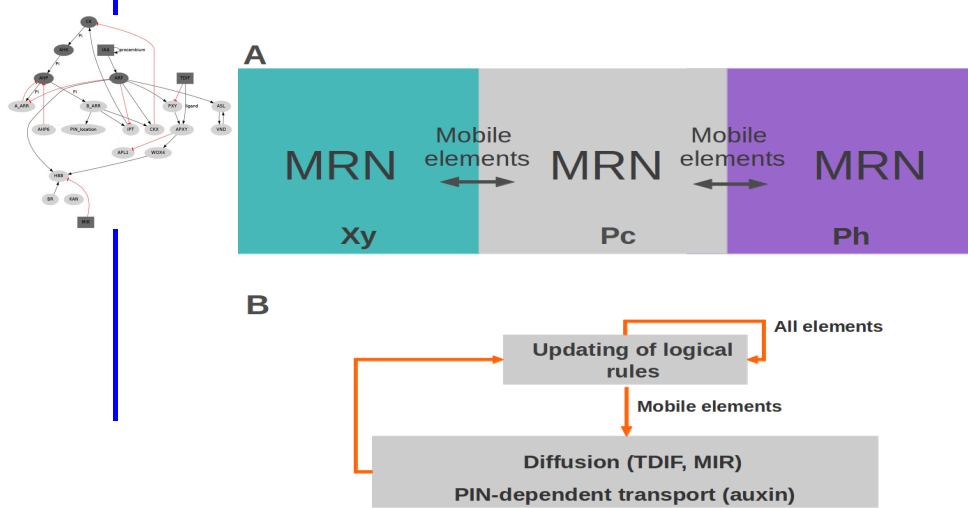
- Formulating *logical rules* defining the *model dynamics*

| Network node | Dynamical rule |
|--------------|---|
| CK | 2 If ipt=1 and cxx=0 1 If ipt=1 and cxx=1 0 else |
| CKX | 1 If barr>0 or arf=2 0 else |
| AHKs | ahk=ck |
| AHPs | 2 If ahk=2 and ahp6=0 and aarr=0 1 If ahk=2 and (ahp6+aarr<2) 1 If ahk=1 and ahp6<1 0 else |
| B-Type ARRs | 1 If ahp>0 0 else |
| A-Type ARRs | 1 If arf<2 and ahp>0 0 else |

Benitez and Hejatko, *PLoS One*, 2013

Molecular Regulatory Networks Modeling

- Specifying **mobile elements** and their model behaviour



29

CEITEC

According to experimental evidence for the system under study, the hormone IAA, the peptide TDIF, and the microRNA MIR165/6 are able to move among the cells. In the case of TDIF and MIR165/6, the mobility is defined as diffusion and is given by the following equation:

$$g(t+1)T[i] = H(g(t)[i] + D(g(t)[i+1] + g(t)[i-1] - N(g(t)[i]) - b)) \quad (2),$$

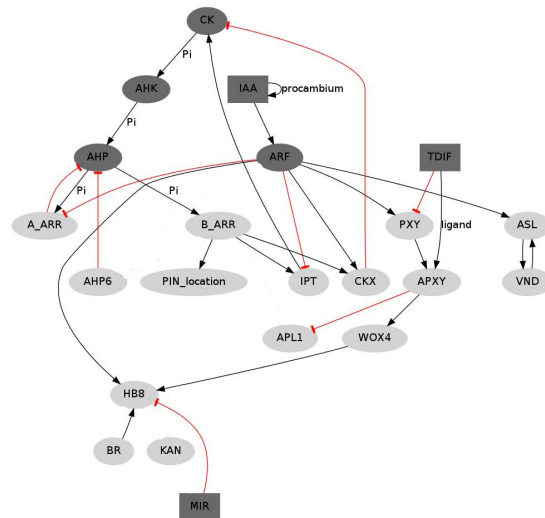
where $g(t)T[i]$ is the total amount of TDIF or MIR165 in cell (i). D is a parameter that determines the proportion of g that can move from any cell to neighboring ones and is correlated to the diffusion rate of g . b is a constant corresponding to a degradation term. H is a step function that converts the continuous values of g into a discrete variable that may attain values of 0, 1 or 2. N stands for the number of neighbors in each cell. Boundary conditions are zero-flux. In the case of IAA, the mobility is defined as active transport dependent on the radial localization of the PIN efflux transporters and is defined by the equation:

$$iaa(t+1)T[i] = H(iaa(t)[i] + Diaa(pin(t)[i+1])(iaa(t)[i+1]) + Diaa(pin(t)[i-1])(iaa(t)[i-1]) - N(Diaa)(pin(t)[i])(iaa(t)[i]) - b) \quad (3),$$

where $Diaa$ is a parameter that determines the proportion of IAA that can be transported among cells. The transport depends on the presence of IAA and PIN in the cells and b corresponds to a degradation term. As in equation 2, H is a step function that converts the continuous values to discrete ones and N stands for the number of neighbors in each cell. Boundary conditions for IAA motion are also zero-flux.

Molecular Regulatory Networks Modeling

- Preparing the *first version* of the model and its *testing*



30

CEITEC

The proposed model considers data that we identified and evaluated through an extensive search (up to January 2012). It takes into account molecular interactions, hormonal and expression patterns, and cell-to-cell communication processes that have been reported to affect vascular patterning in the bundles of Arabidopsis. The model components and interactions are graphically presented in the figure above. In the network model, nodes stand for molecular elements regulating one another's activities. Most of the nodes can take only 1 or 0 values (light gray nodes in the figure), corresponding to "present" or "not present," respectively. Since the formation of gradients of hormones and diffusible elements may have important consequences in pattern formation, mobile elements TDIF and MIR, as well as members of the CK and IAA signaling systems, can take 0, 1 or 2 values (dark gray nodes in the figure above) Benitez and Hejatko, submitted.

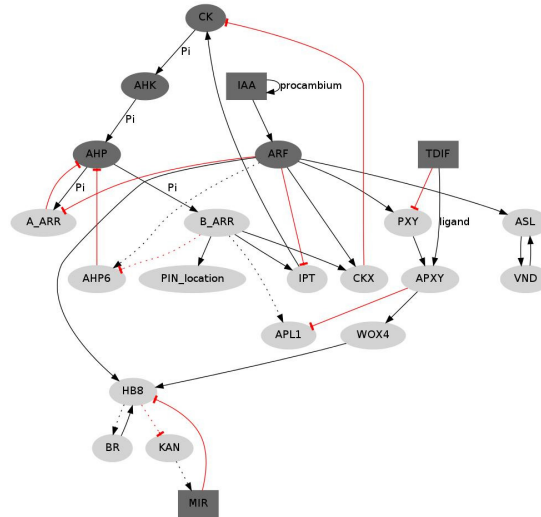
Molecular Regulatory Networks Modeling

□ Specifying of missing interactions via *informed predictions*

| Interaction | Evidence | References |
|-------------------------------|---|---|
| CK → PIN7 radial localization | Predicted interaction (could be direct or indirect) | |
| | Informed by the following data: | |
| | During the specification of root vascular cells in <i>Arabidopsis thaliana</i> , CK regulates the radial localization of PIN7. | [18] |
| | Expression of PIN7::GFP and PIN7::GUS is upregulated by CK with no significant influence of ethylene. | [18,20] |
| | In the root, CK signaling is required for the CK regulation of PIN1, PIN3, and PIN7. Their expression is altered in <i>wol</i> , <i>cre1</i> , <i>ahk3</i> and <i>ahp6</i> mutants. | [19] |
| CK → APL | Predicted interaction (could be direct or indirect) | |
| | Consistent with the fact that APL overexpression prevents or delays xylem cell differentiation, as does CKs. | [21] |
| | Partially supported by microarray data and phloem-specific expression patterns of CK response factors. | (TAIR, ExpressionSet: 1005823559, [22]) |

Molecular Regulatory Networks Modeling

- Preparing the *next version* of the model and its *testing*



Benítez and Hejatko, *PLoS One*, 2013

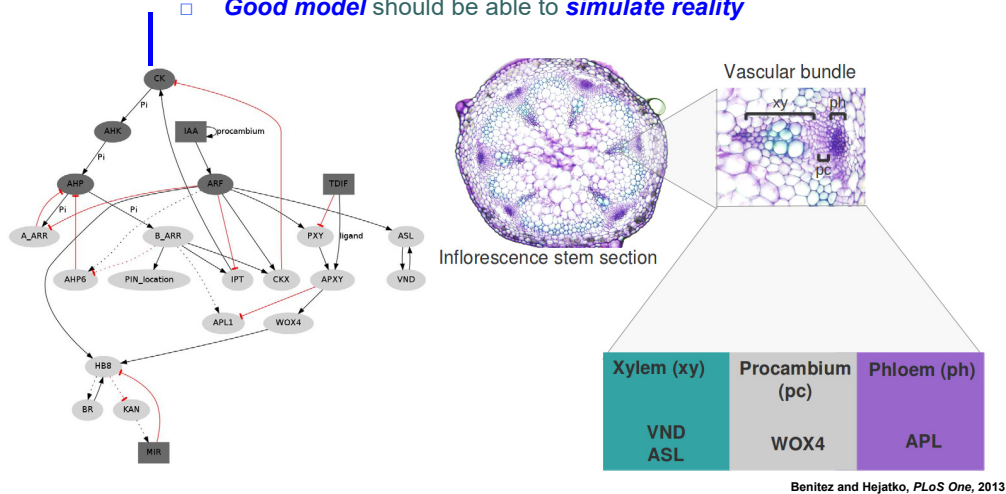
32

CEITEC

In comparison to the model shown on slide 21, the final version of the model contains the predicted interactions (dashed lines).

Molecular Regulatory Networks Modeling

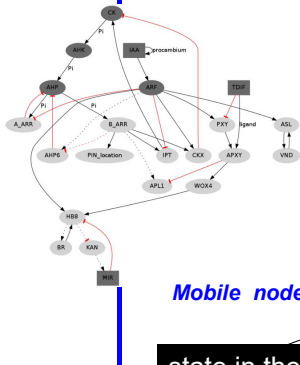
□ **Good model** should be able to **simulate reality**



Benitez and Hejatko, *PLoS One*, 2013

Molecular Regulatory Networks Modeling

- Formulating *equations* describing the *relationships* in the model



logical rule function

state in the time t

Static nodes: $g_n(t+1) = F_n(g_{n1}(t), g_{n2}(t), \dots, g_{nk}(t))$

state in the time $t+1$

Amount of TDIF or MIR165 in cell i

Mobile nodes: $g_{(t+1)T[i]} = H(g_{(t)[i]} + D(g_{(t)[i+1]} + g_{(t)[i-1]} - N(g_{(t)[i]}) - b)$

state in the time $t+1$

constant corresponding to a degradation term

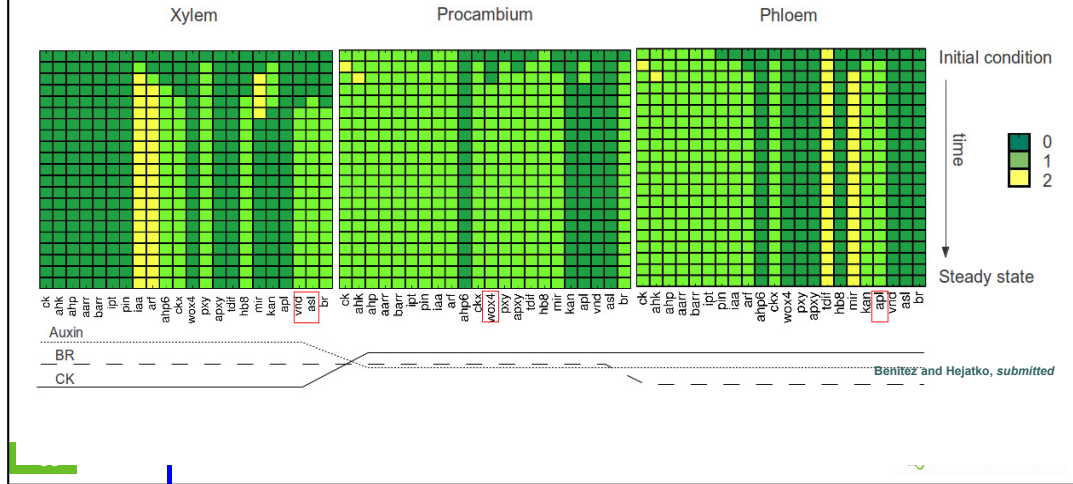
proportion of movable element

Molecular Regulatory Networks Modeling

- **Good model** should be able to **simulate reality**

$$\text{Static nodes: } g_n(t+1) = F_n(g_{n1}(t), g_{n2}(t), \dots, g_{nk}(t))$$

$$\text{Mobile nodes: } g(t+1)_{T[i]} = H(g(t)_{[i]} + D(g(t)_{[i+1]} + g(t)_{[i-1]} - N(g(t)_{[i]}) - b)$$



The initial conditions specify the initial state of some of the network elements (figure above) and are the following :

I) In the procambial position (central compartment), CK is initially available and there is an initial and sustained IAA input or self-upregulation. This condition is supported by several lines of evidence. Also *HB8*, a marker of early vascular development that has been found in preprocambial cells, is assumed to be initially present at this position. These conditions are not fixed, however. After the initial configuration, all the members of the CK and IAA signaling pathways, as well as *HB8*, can change their states according to the logical rules.

II) In the xylem and phloem positions, it is assumed that no element is initially active except for the CK signaling pathway and TDIF, both in the phloem position. The level of expression for a given node is represented by a discrete variable g and its value at a time $t+1$ depends on the state of other components of the network (g_1, g_2, \dots, g_N) at a previous time unit. The state of every gene g therefore changes according to:

$$g_n(t+1) = F_n(g_{n1}(t), g_{n2}(t), \dots, g_{nk}(t)) \quad (1).$$

In this equation, $g_{n1}, g_{n2}, \dots, g_{nk}$ are the regulators of gene g_n and F_n is a discrete function known as a logical rule (logical rules are grounded in available experimental data, for example see slide 20). Given the logical rules, it is possible to follow the dynamics of the network for any given initial configuration of the nodes expression state. One of the most important traits of dynamic models is the existence of steady states in which the entire network enters into a self-sustained configuration of the nodes state. It is thought that in developmental systems such self-sustained states correspond to particular cell types.

According to experimental evidence for the system under study, the hormone IAA, the peptide TDIF, and the microRNA MIR165/6 are able to move among the cells. In the case of TDIF and MIR165/6, the mobility is defined as diffusion and is given by the following equation:

$$g(t+1)_{T[i]} = H(g(t)_{[i]} + D(g(t)_{[i+1]} + g(t)_{[i-1]} - N(g(t)_{[i]}) - b) \quad (2),$$

where $g(t)_{T[i]}$ is the total amount of TDIF or MIR165 in cell (i). D is a parameter that determines the proportion of g that can move from any cell to neighboring ones and is correlated to the diffusion rate of g . b is a constant corresponding to a degradation term. H is a step function that converts the continuous values of g into a discrete variable that may attain values of 0, 1 or 2. N stands for the number of neighbors in each cell. Boundary conditions are zero-flux. In the case of IAA, the mobility is defined as active transport dependent on the radial localization of the PIN efflux transporters and is defined by the equation:

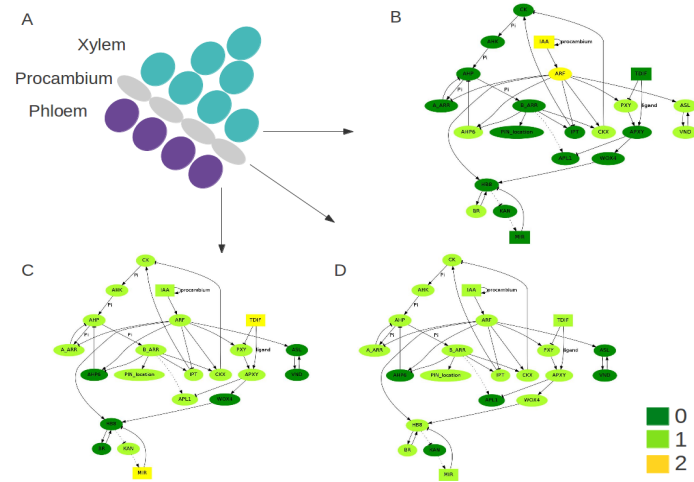
$$iaa(t+1)_{T[i]} = H(iaa(t)_{[i]} + Diaa(pin(t)_{[i+1]})(iaa(t)_{[i+1]}) + Diaa(pin(t)_{[i-1]})(iaa(t)_{[i-1]}) - N(Diaa)(pin(t)_{[i]})(iaa(t)_{[i]}) - b) \quad (3),$$

where $Diaa$ is a parameter that determines the proportion of IAA that can be transported among cells. The transport depends on the presence of IAA and PIN in the cells and b corresponds to a degradation term. As in equation 2, H is a step function that converts the continuous values to discrete ones and N stands for the number of neighbors in each cell. Boundary conditions for IAA motion are also zero-flux.

Using the logical rules, equations 1–3, and a broad range of parameter values (not shown here), it is possible fully to reproduce the results and analyses reported in the following sections (see the figure above for the simulation time course).

Molecular Regulatory Networks Modeling

- The **good model** should be able to **simulate reality**



36

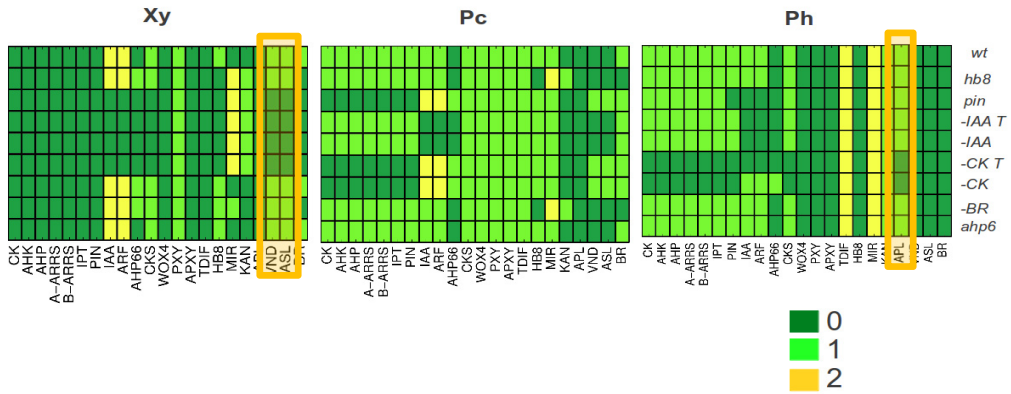
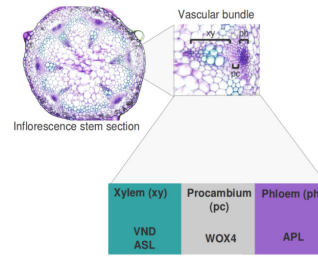
Benitez and Hejatko, submitted

CEITEC

Another representation of the distinct expression profiles in the individual vascular bundle compartments (phloem, procambium and xylem).

Molecular Regulatory Networks Modeling

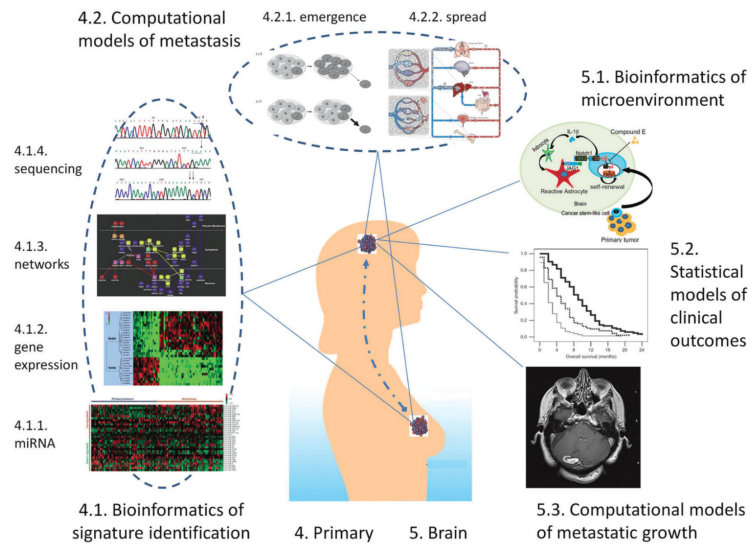
□ Simulation of *mutants*



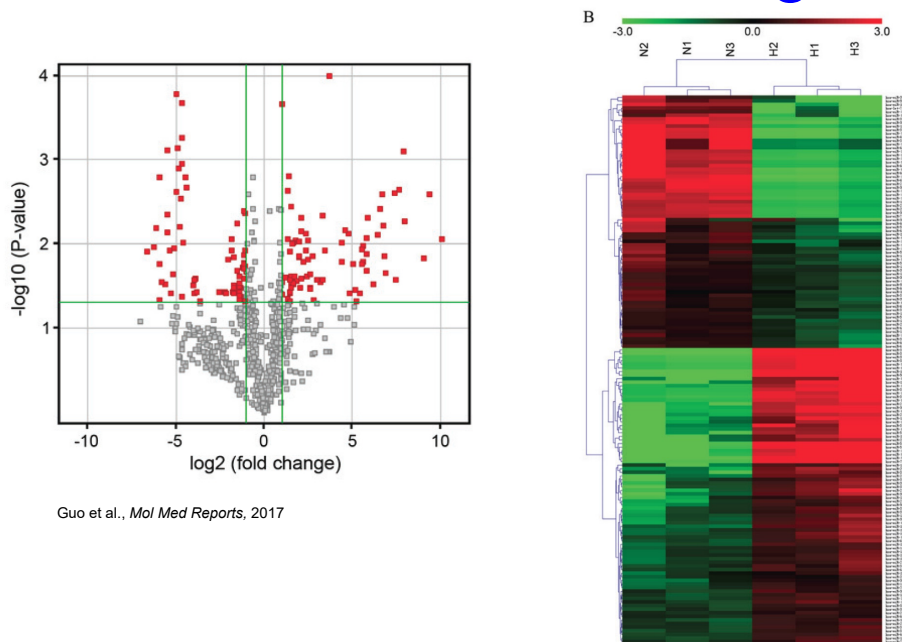
Outline

- Definition of Systems Biology
- Tools
 - Gene Ontology analysis
 - Bayesian Networks
 - Molecular/Gene Regulatory Networks Modeling
 - Inferring Gene Regulatory Networks from Large Omics Datasets

Systems Biology in Cancer Research



miRNA/mRNA Profiling

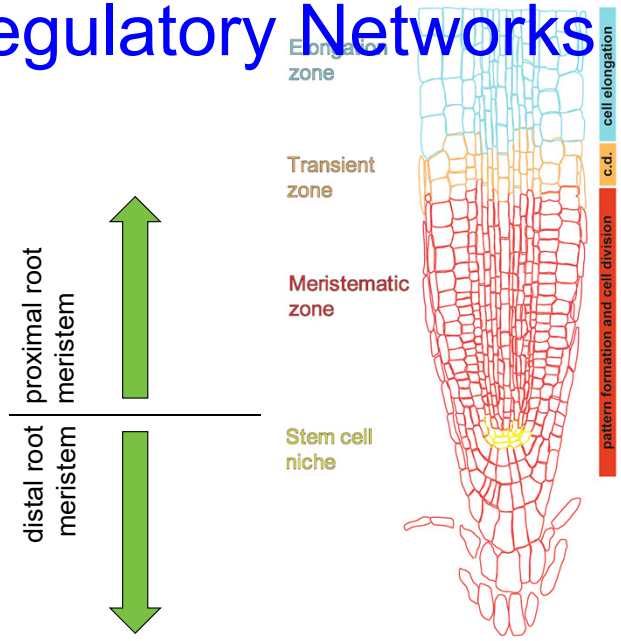


40

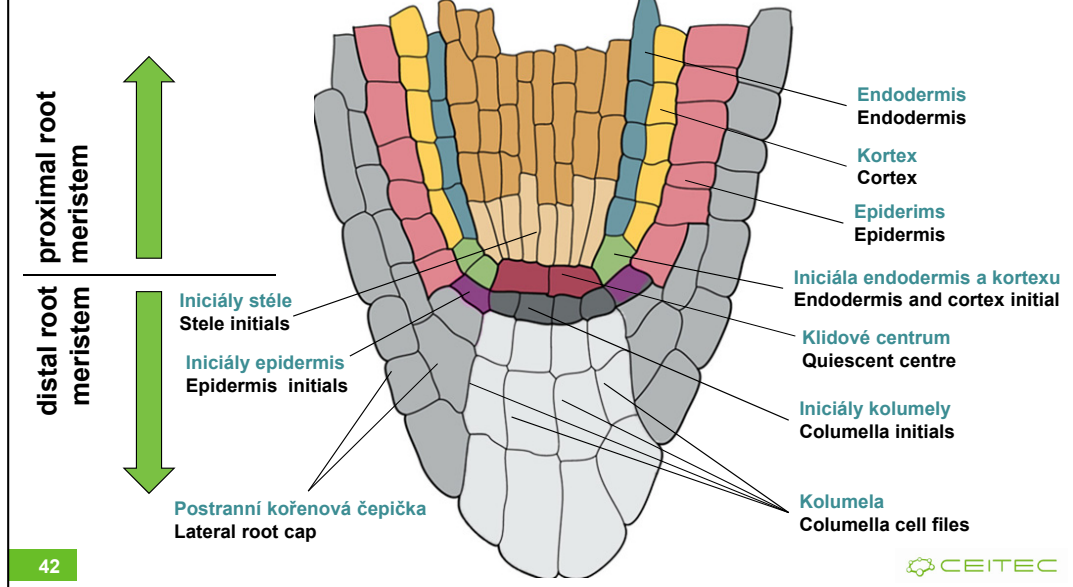
Hypertrophic scars (HS) are a fibroproliferative disorder of the skin, which causes aesthetic and functional impairment. However, the molecular pathogenesis of this disease remains largely unknown and currently no efficient treatment exists. MicroRNAs (miRNAs) are involved in a variety of pathophysiological processes, however the role of miRNAs in HS development remains unclear. To investigate the miRNA expression signature of HS, microarray analysis was performed and 152 miRNAs were observed to be differentially expressed in HS tissue compared with normal skin tissues. Of the miRNAs identified, miRNA-21 (miR-21) was significantly increased in HS tissues and hypertrophic scar fibroblasts (HSFBs) as determined by reverse transcription-quantitative polymerase chain reaction analysis. It was also observed that, when miR-21 in HSFBs was blocked through use of an antagomir, the phenotype of fibrotic fibroblasts *in vitro* was reversed, as demonstrated by growth inhibition, induction of apoptosis and suppressed expression of fibrosis-associated genes collagen type I α 1 chain (COL1A1), COL1A2 and fibronectin. Furthermore, miR-21 antagomir administration significantly reduced the severity of HS formation and decreased collagen deposition in a rabbit ear HS model. The total scar area and scar elevation index were calculated and were demonstrated to be significantly decreased in the treatment group compared with control rabbits. These results indicated that the miR-21 antagomir has a therapeutic effect on HS and suggests that targeting miRNAs may be a successful and novel therapeutic strategy in the treatment of fibrotic diseases that are difficult to treat with existing methods.

miRNA expression signature profiling in hypertrophic scars (HS). (A) Volcano plot presenting differentially expressed miRNAs between HS and paired (non-scar, obtained from donor sites during scar resection) NS tissue. miRNA microarray expression profiling from three paired HS and NS tissues was performed. Differentially expressed miRNAs were identified by fold change and a P-value calculated using Student's *t*-test. The threshold set to identify up and downregulated genes was a fold change ≥ 2 and $P < 0.05$. Red dots indicate points-of-interest that exhibit large-magnitude fold-changes (x-axis; log₂ of the fold change) and high statistical significance (y-axis; -log₁₀ of the P-value). (B) Hierarchical clustering showing differentially expressed miRNAs from HS samples compared with paired NS tissues. Each row represents one miRNA and each column represents one tissue sample. The relative miRNA expression is depicted according to the color scale. Red indicates upregulation and green indicates downregulation. N1-3 represents NS tissue samples, whereas H1-3 represents HS tissue samples. The differentially expressed miRNAs were clearly separated into clusters. miRNA, microRNA; hsa-miR, human microRNA; HS, hypertrophic scar; NS, normal skin.

Inferring Gene Regulatory Networks



Gene Regulatory Networks

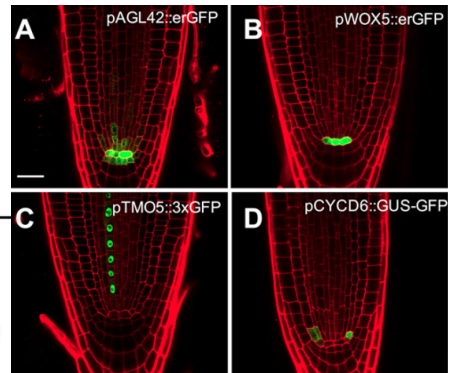


In the root, several functional and anatomical units could be recognized.

Along the longitudinal axis, the root meristem forms a distal root tip, including stem cell niche, columella and lateral root cap, proximal meristem with a population of rapidly dividing cells and elongation zone where cells leaving the root meristem undergo rapid elongation and mature.

Gene Regulatory Networks - GENIST

- Inferring GRNs via **GENIST**
 - **GE**ne regulatory **N**etwork **I**nference from **S**patio**T**emporal data algorithm
 - Combining **s**patial- and **t**ime-specific gene **e**xpression profiles

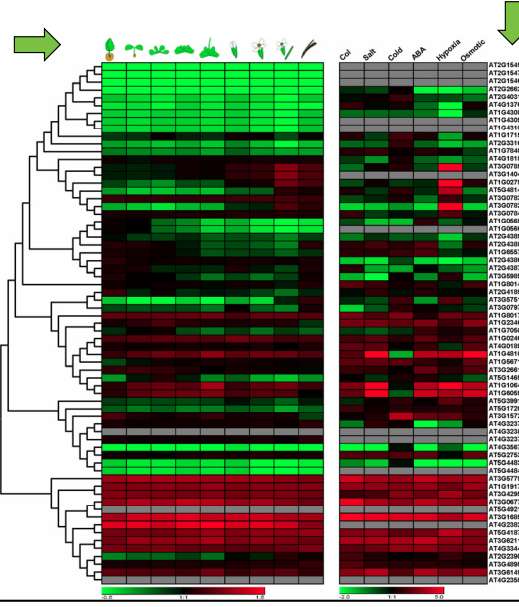


de Luis Balaguer et al., *PNAS*, 2017

Combining Large Omics Datasets

TISSUE/TIME

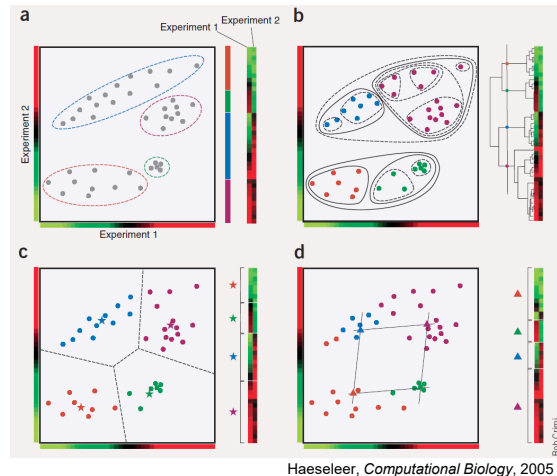
GENES



Gene Regulatory Networks - GENIST

- Inferring GRNs via **GENIST**

- **Clustering of genes**
 - Expression similarity under various conditions/genetic backgrounds, time points, ...
- **Inferring intra-cluster connections**
 - **Selection** of potential **regulators** and **co-regulators**
 - Based on the **time correlation** in the **change of expression** and/or **user specification**
 - **Dynamic Bayesian Network modeling**



45

CEITEC

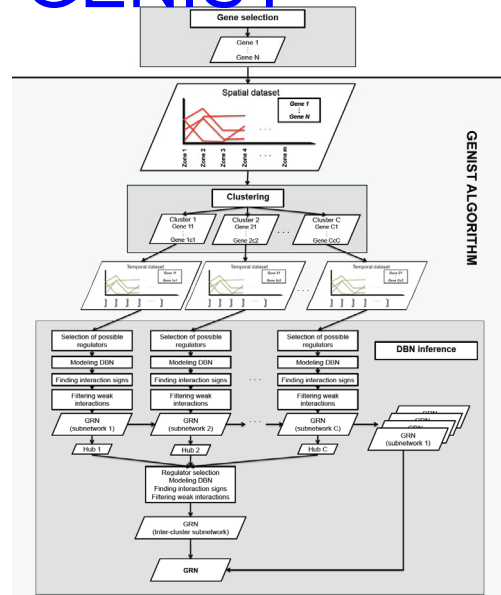
GENIST algorithm

The MATLAB source code for GENIST is publicly available at <https://github.com/madeluis/GENIST>.

For the detailed description of the procedure, see de Luis Balaguer et al., 2017, SI (<https://www.pnas.org/content/114/36/E7632/tab-figures-data>)

Gene Regulatory Networks - GENIST

- Inferring GRNs via **GENIST**
 - **Clustering of genes**
 - Expression similarity under various conditions/genetic backgrounds, time points, ...
 - **Inferring intra-cluster connections**
 - **Selection of potential regulators and co-regulators**
 - Based on the time correlation in the change of expression and/or user specification
 - **Dynamic Bayesian Network modeling**



de Luis Balaguer et al., PNAS, 2017

46

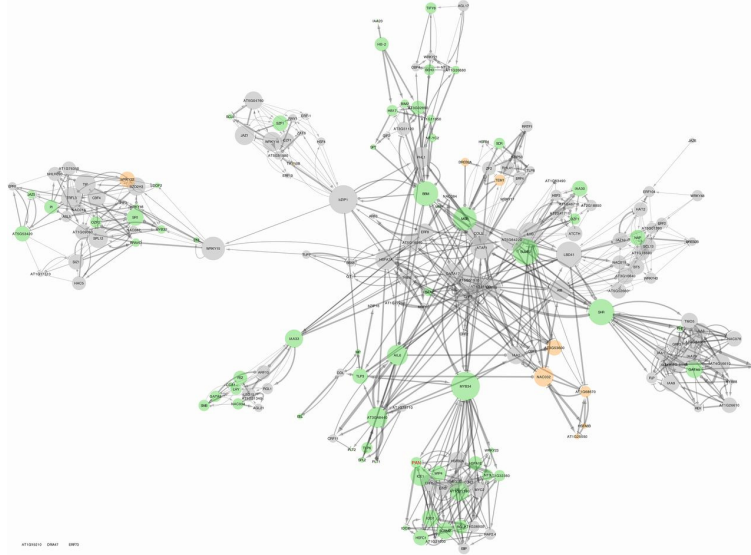
GENIST algorithm

The MATLAB source code for GENIST is publically available at <https://github.com/madeluis/GENIST>.

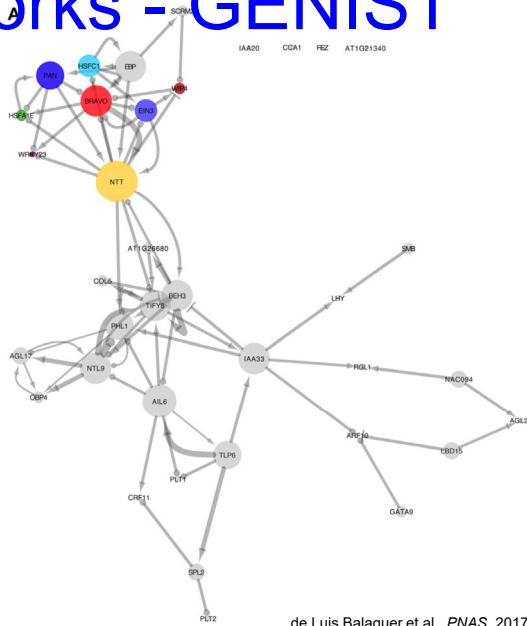
For the detailed description of the procedure, see de Luis Balaguer et al., 2017, SI (<https://www.pnas.org/content/114/36/E7632/tab-figures-data>)

GENIST block diagram. GENIST is implemented in MATLAB, and is composed of two consecutive steps, clustering and GRN inference. Clustering is performed based on a spatial dataset. Each resulting cluster is independently processed by the GRN inference step, based on a temporal dataset.

Gene Regulatory Networks - GENIST

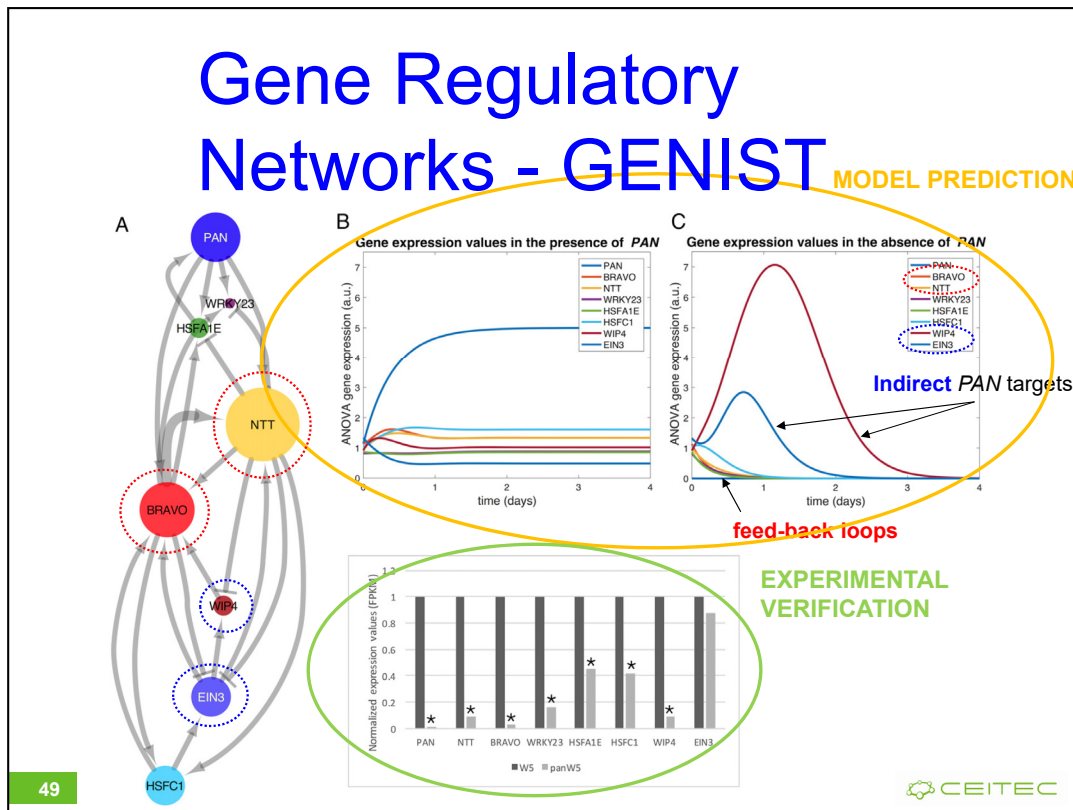


Gene Regulatory Networks - GENIST



Gene Regulatory Networks - GENIST

MODEL PREDICTION



PAN subnetwork in the QC inferred with the 12 developmental time points of the Arabidopsis root. (A) Optimal configuration (combination of signs— activation or repression—of the regulations that were inferred with undefined signs, which best fits the data in the simulations of the equations) of the subnetwork of PAN and its downstream targets. (B and C) Resulting expression values of PAN and its downstream targets, over time, after simulating the optimal configuration of the model. Simulations were run for 5 d and plots are shown until all factors reached steady states in the WT and pan mutant simulations. (B) Model simulated with the fitted equation parameters. (C) Model simulated with the PAN-associated parameters set to zero to simulate a pan mutant situation. (D) Normalized expression values of PAN and its predicted downstream targets in Col-0 wild type and in pan mutant. Statistically significant changes of expression between the mutant and the wild type, * $q < 0.05$.

In the WT simulation, all targets reached steady states by day 1 with subtle changes of expression during the transients (time length until expression values reach their steady states). On the contrary, the pan mutant simulation showed that EIN3 and WIP4 presented high expression values during the transients and reached steady states at later stages (days 3 and 4, respectively). These delayed responses and initial activations of EIN3 and WIP4 reflect the prediction that these genes are indirectly affected by PAN. Further, the dynamics of our simulations depict that BRAVO, NTT, and WIP4 are, in our equations, connected through feedback loops. During the transient phase of the mutant simulation, NTT and BRAVO show an exponential decay, which is consistent with the prediction that they activate each other in the absence of PAN. However, their steady states are not immediately reached since they are activated by WIP4 and EIN3. Conversely, WIP4, which is repressed by a decaying NTT, shows high levels of expression.

Summary

- Definition of **Systems Biology**
- Tools
 - **Gene Ontology** analysis
 - **Bayesian Networks**
 - **Molecular/Gene Regulatory Networks Modeling**
 - **Inferring Gene Regulatory Networks from Large Omics Datasets**

Discussion