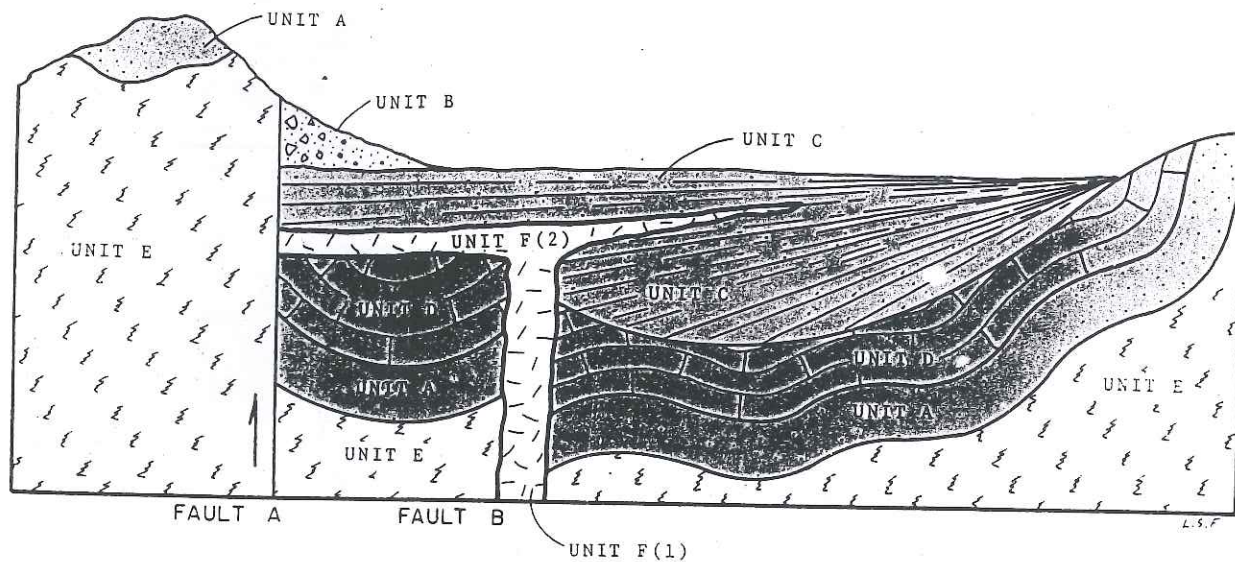


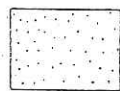
INTRODUCTION TO CROSS SECTION NUMBER FIVE
(TRIASSIC BASINS OF EASTERN NORTH AMERICA)

WEST

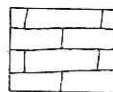
EAST



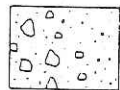
DESCRIPTION OF ROCK UNITS



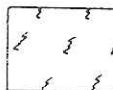
UNIT A - Quartz sandstone with oscillation ripple marks and cross bedding



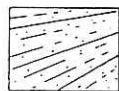
UNIT D - Marine limestone



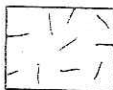
UNIT B - Poorly sorted conglomerate with pebbles of quartz sandstone, gneiss, and schist



UNIT E - Gneiss and schist



UNIT C - Red, immature sandstones and shales; cross bedded with ripple marks



UNIT F(1) - Basalt with olivine phenocrysts

UNIT F(2) - Vesicular (cellular) basalt