

# Marchantiophyta, Bryophyta

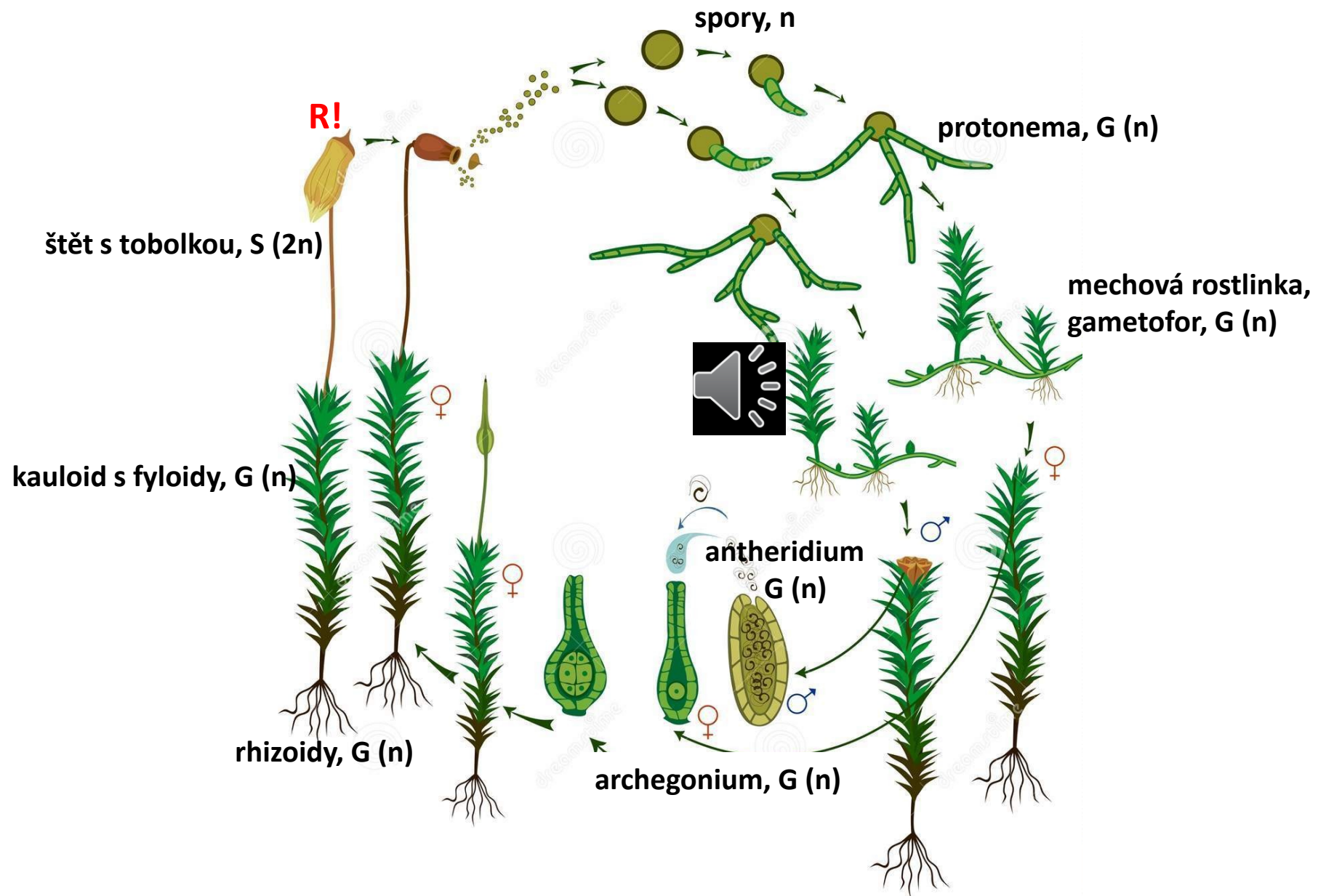


**Marchantiophyta**



**Bryophyta**

# Mechorosty – metageneze



# Marchantiophyta, *Marchantia polymorpha*



stélka s  
archegoniofory



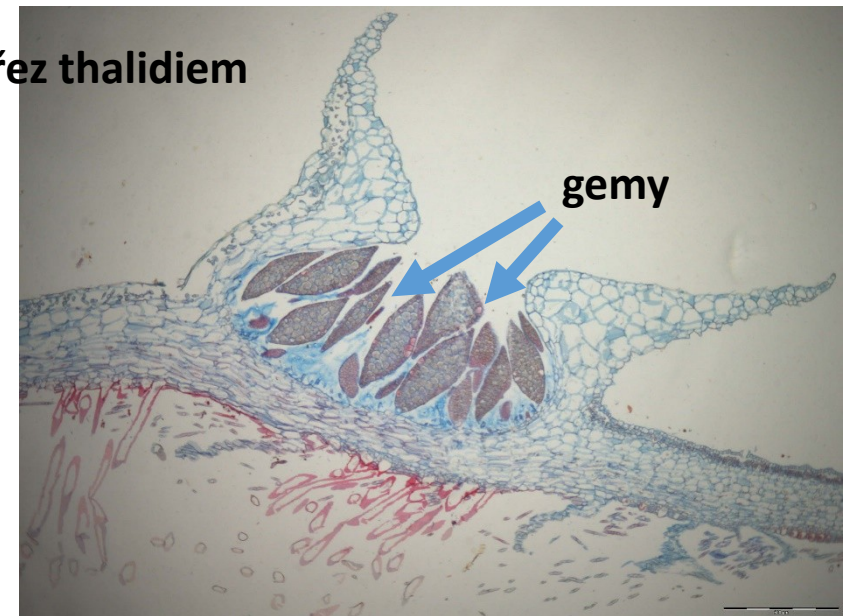
stélka s thalidii



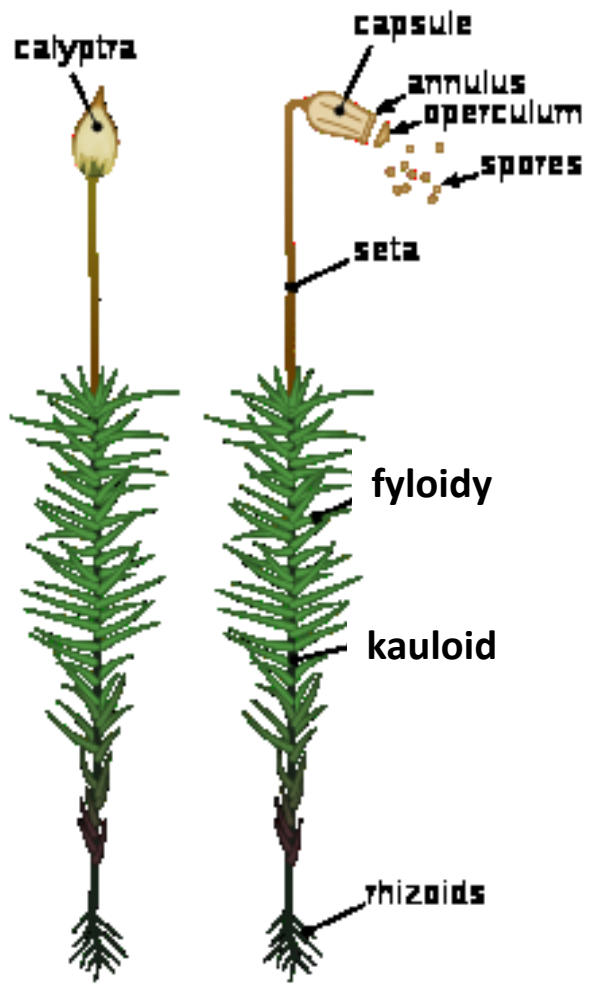
průřez thalidiem



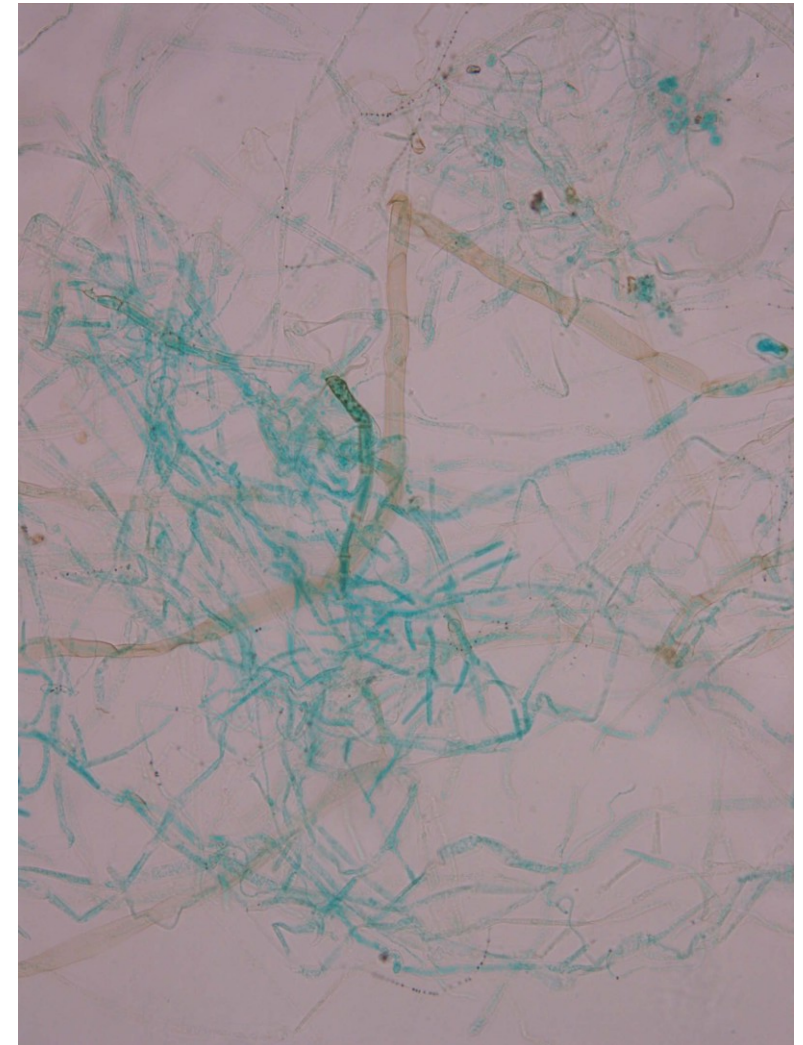
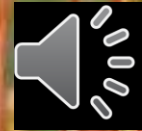
stélka s  
antheridiofory



# Bryophyta, Polytrichopsida



*Polytrichum commune*



protonema

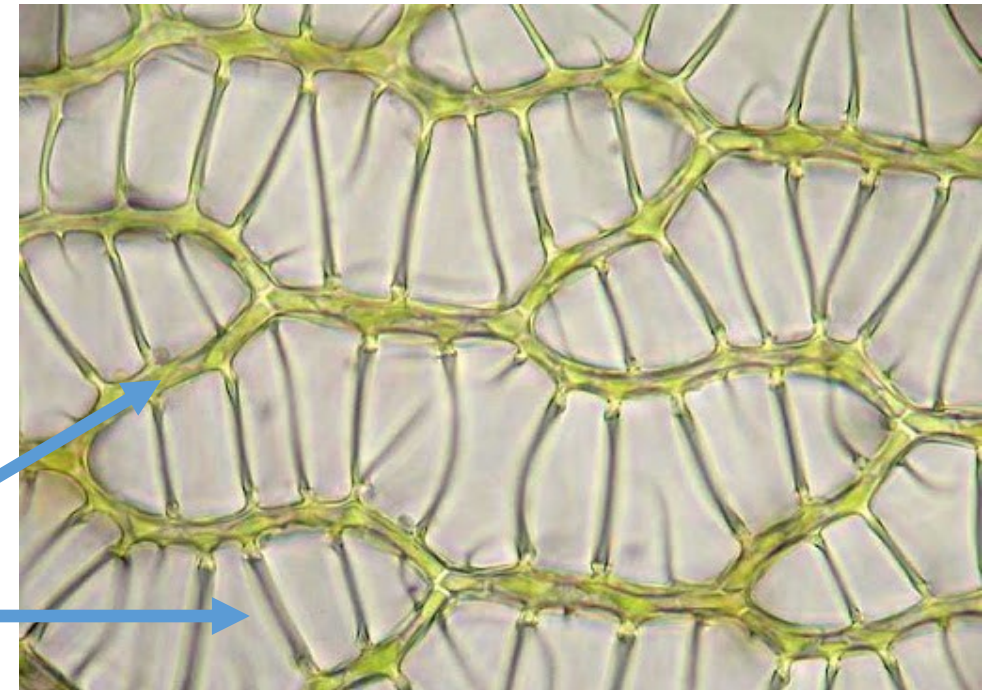
# Bryophyta, Sphagnopsida



*Sphagnum sp.*



hlavička



lístky rašeliníku jsou tvořeny  
dvěma typy buněk: zelené  
drobné buňky (chlorocyty)  
mají asimilační funkci, nezelné  
velké buňky (hyalocyty)  
plní funkci cisteren

# Bryophyta, Bryopsida



*Mnium hornum*

