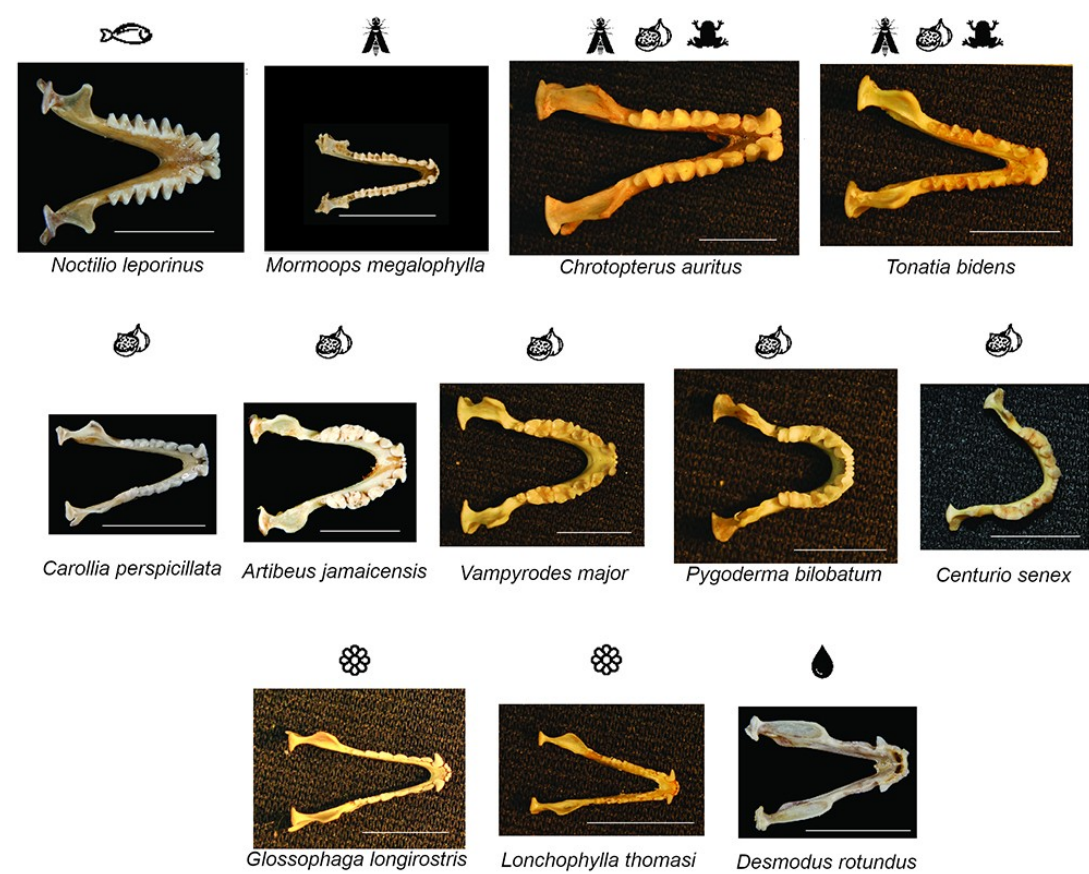
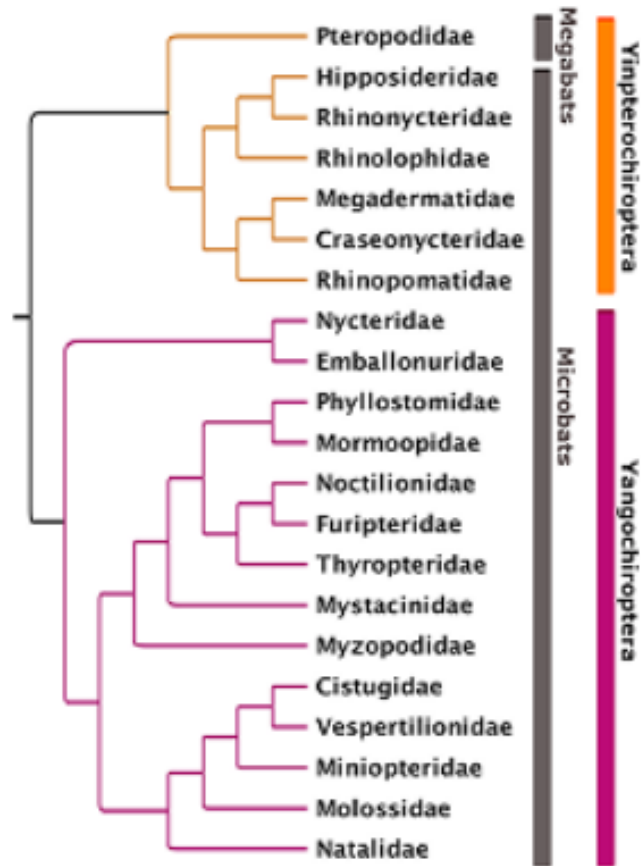


# Potravní specializace letounů (Chiroptera)

Bc. Petr Mrhálek



- 1456 sp. – (Simmons, Cirranello, 2022)



# Insektivorie

- 1-2.1.1-3.3/2-3.1.2-3.3 **Vespertilionidae**
- 1.1.1-2.3/2.1.2-3.3 **Rhinolophidae**
- sekodontní chrup, molary dilambdodontní
- až několik tisíc jedinců hmyzu za noc, kontrola proti škůdcům (USA)



*Myotis lucifugus*



*Eptesicus fuscus*



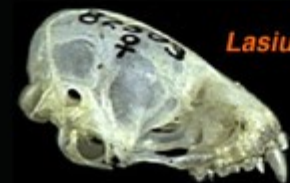
*Myotis sodalis*



*Lasionycteris noctivagans*



*Myotis septentrionalis*



*Lasiurus borealis*



*Pipistrellus subflavus*



*Lasiurus cinereus*



*Nycticeius humeralis*



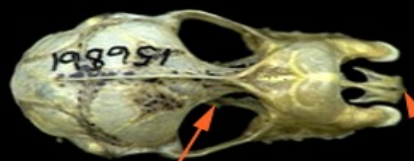
© Zdeněk Hromádka



© Miloš Anděra

www.naturfoto.cz

## Rhinolophidae



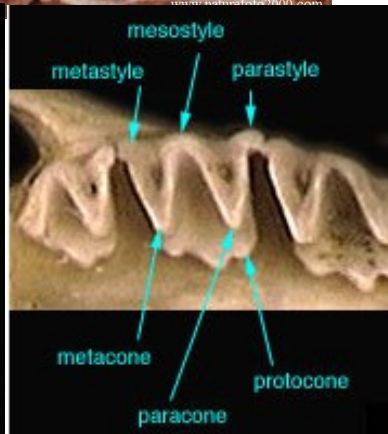
no postorbital process

premaxilla with palatal branches only

"noseleaf" present



dilambdodont molars



mesostyle

metastyle

parastyle

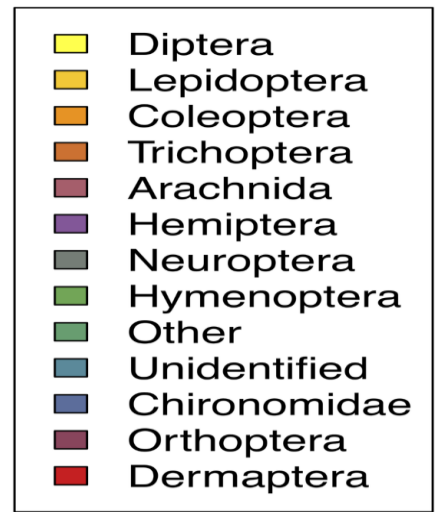
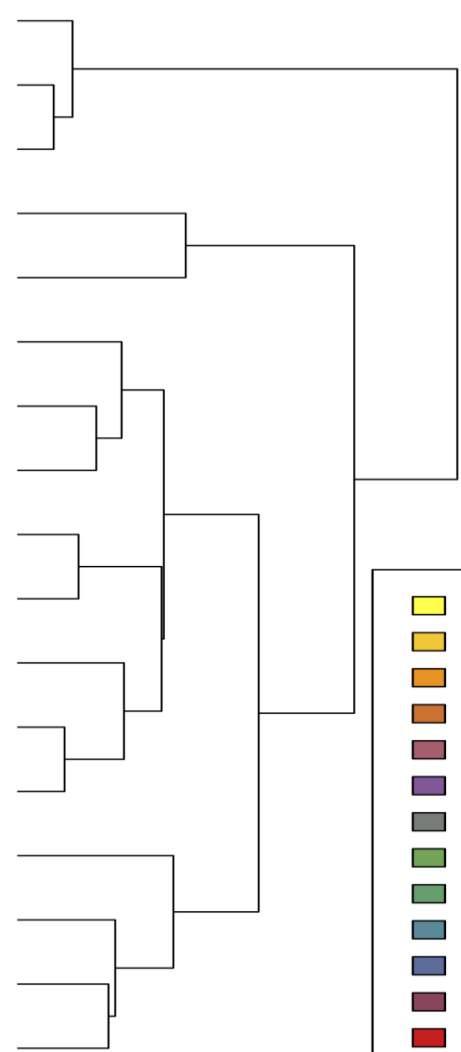
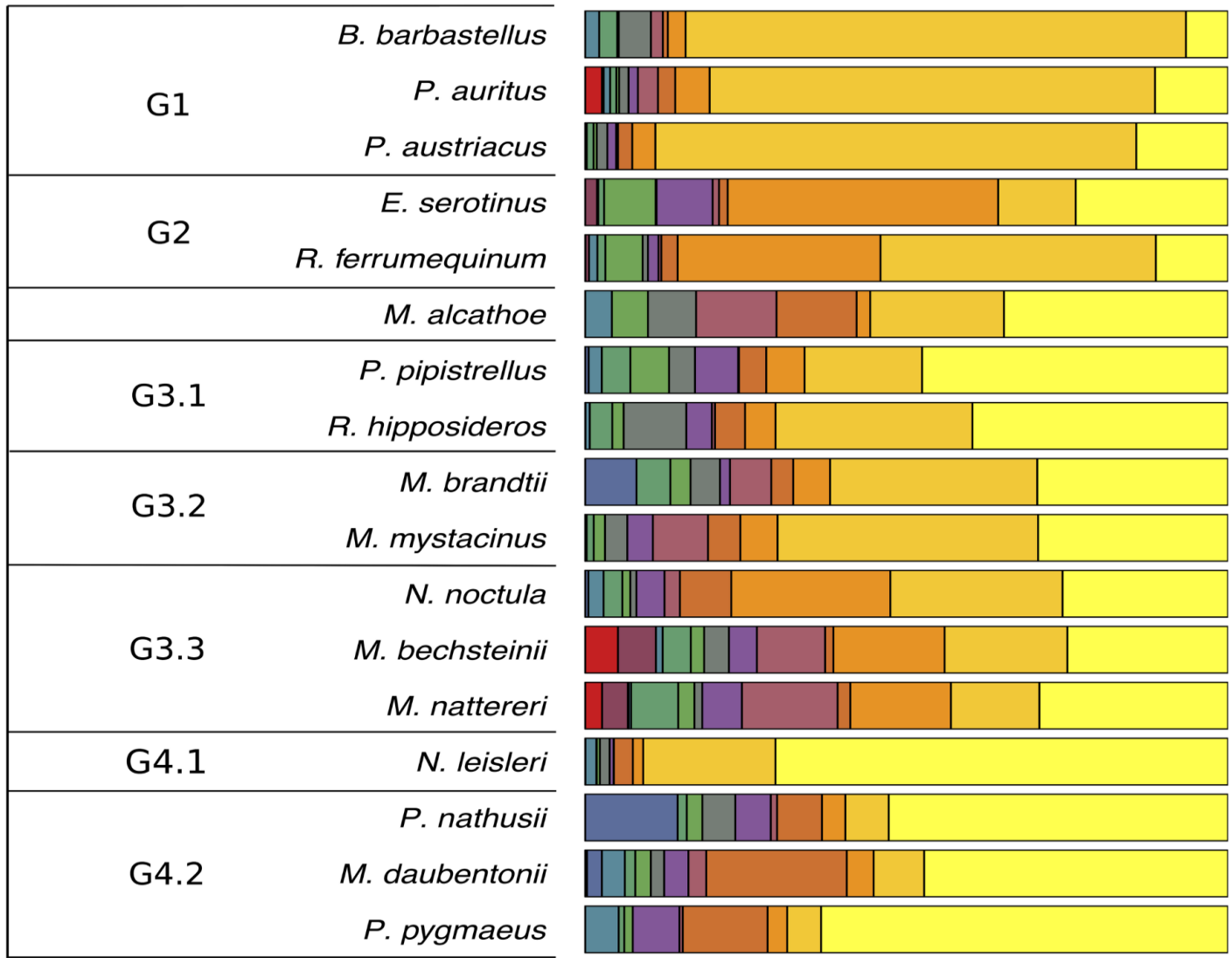
metacone

paracone

protocone

Percentage Arthropoda  
Composition (%)

0.0 0.2 0.4 0.6 0.8 1.0



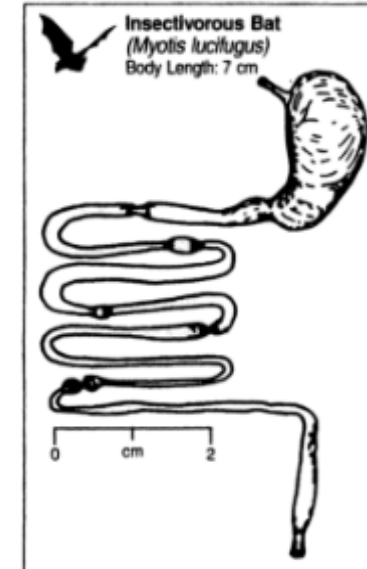
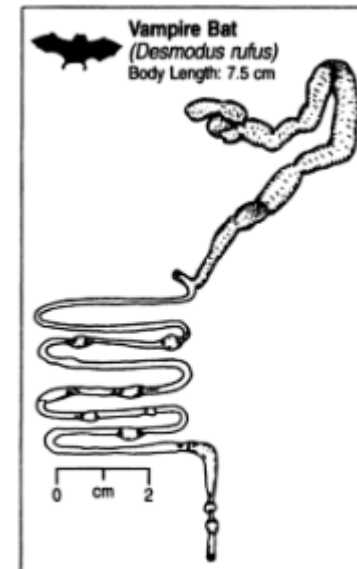
(Ware,2020)

# Sanguivorie

- **Phyllostomidae:Desmodontinae** – 3sp., SA a JA
- *D. rotundus* 1.1.2.0/1.1.3.0
- Výrazné I a C -> kratší rostrum, M redukovaný
- Antikoagulant ve slinách (draculin)



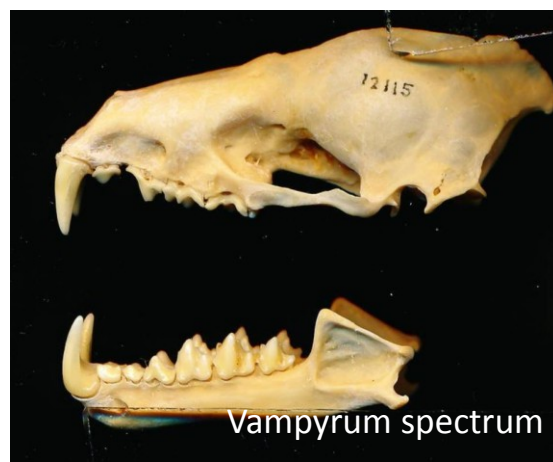
*Desmodus rotundus*



(Stevens & Hume 1995)

# Carnivorie

- Phyllostomidae, Megadermatidae, Vespertilionidae
- robustní lebka i rostrum, střední až velcí letouni
- Výrazné C, dilambdodontní M, u Megadermatidae chybí horní I



Vampyrum spectrum

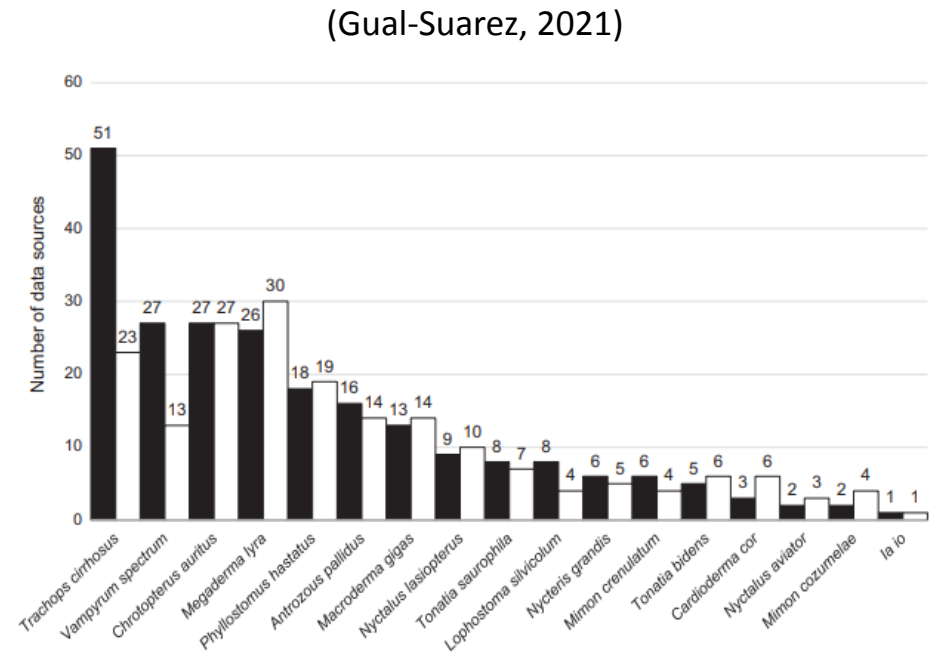


Fig. 2. Sources of information on the diet (black) and roosts (white) of bat species known to eat vertebrate prey. Complete list of works: Appendix S3.



Nyctalus lasiopterus



Megaderma lyra

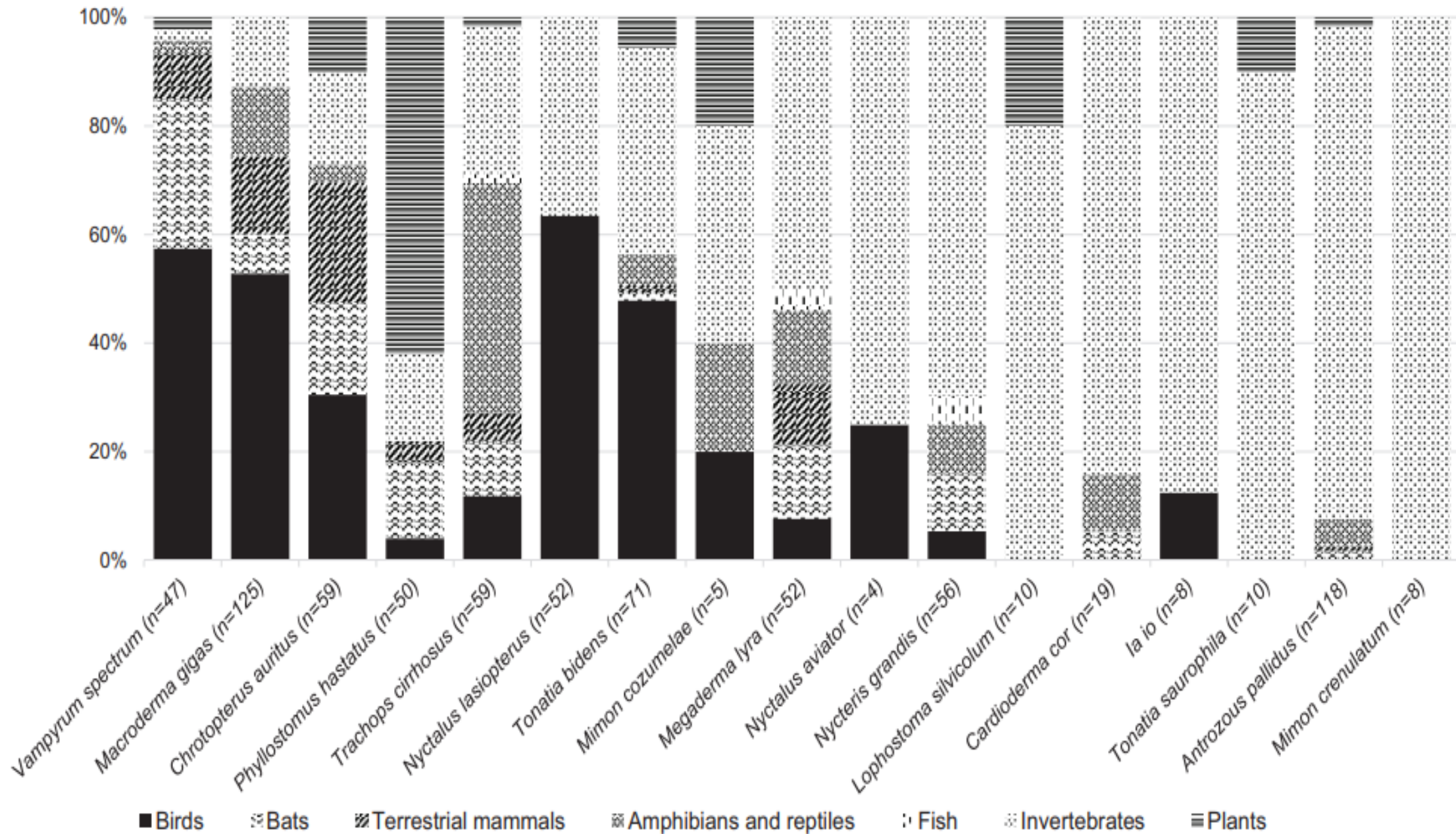
01276363 © Stephen Dalton / naturepl.com



Trachops cirrhosus



Vampyrum spectrum



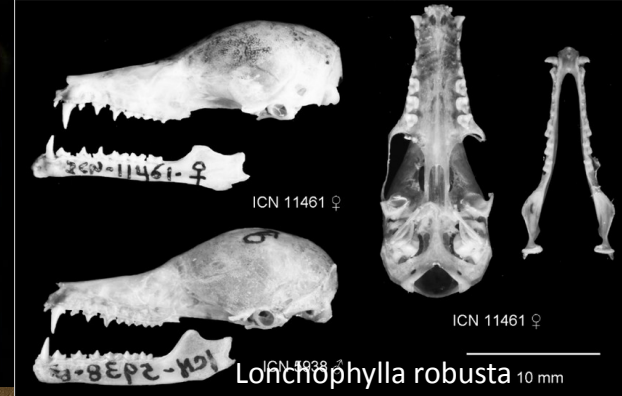
(Gual-Suarez, 2021)

# Nectarivorie, palynovorie

- především Phyllostomidae
- výrazně prodloužené rostrum, dlouhý jazyk
- malé M (případná redukce), diastemy mezi P a M
- Důležitá role opylovačů – chiropterogamie (agáve, baobab mango, durian...)



Lonchophylla robusta



Lonchophylla robusta 10 mm



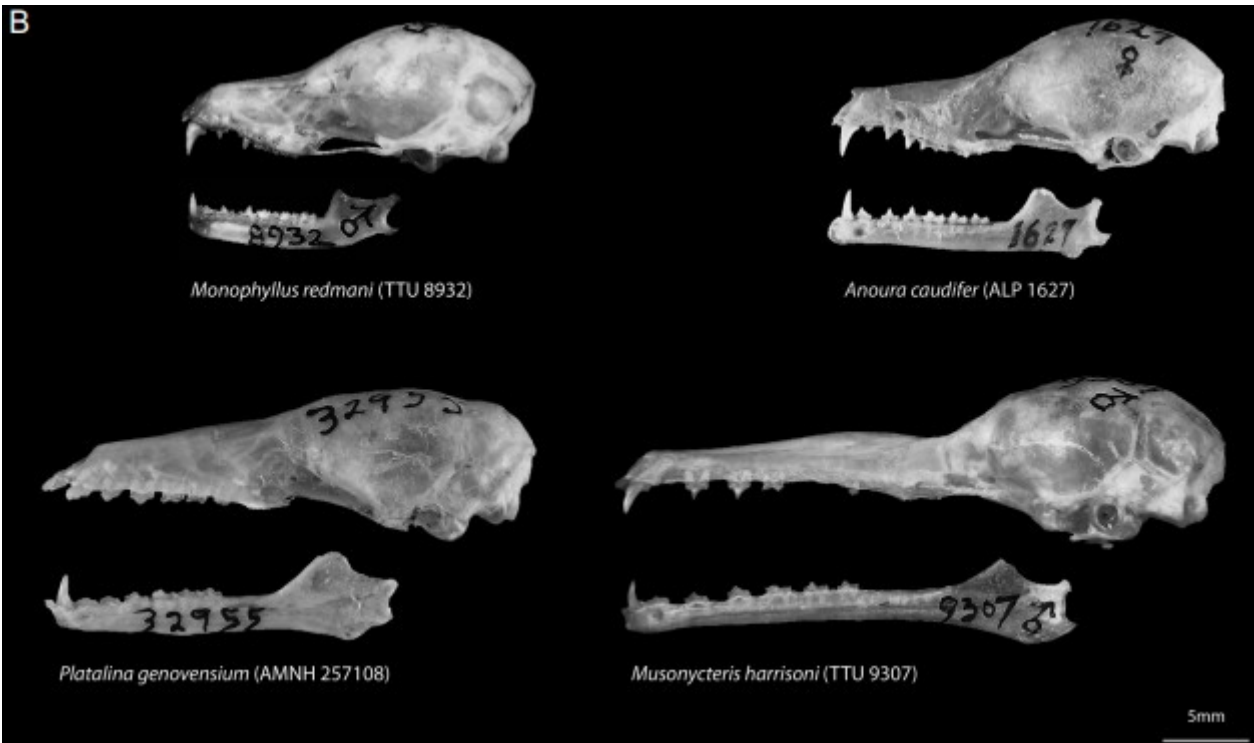
Phyllonycteris poeyi



Glossophaga soricina



Choeronycteris mexicana



(Baker, 2003)



# Frugivorie

- především Pteropodidae - (197 sp. 2018)
- I – malé, C – výrazné, M – ploché, nejsou dilambdodontní, žlábký
- výrazné oči, orientace především zrakem a čichem
- důležitá funkce disperze semen (chiropterochorie)



Centurio senex



Centurio senex



Rousettus aegyptiacus



Acerodon jubatus



Acerodon jubatus



Pteropus melanotus