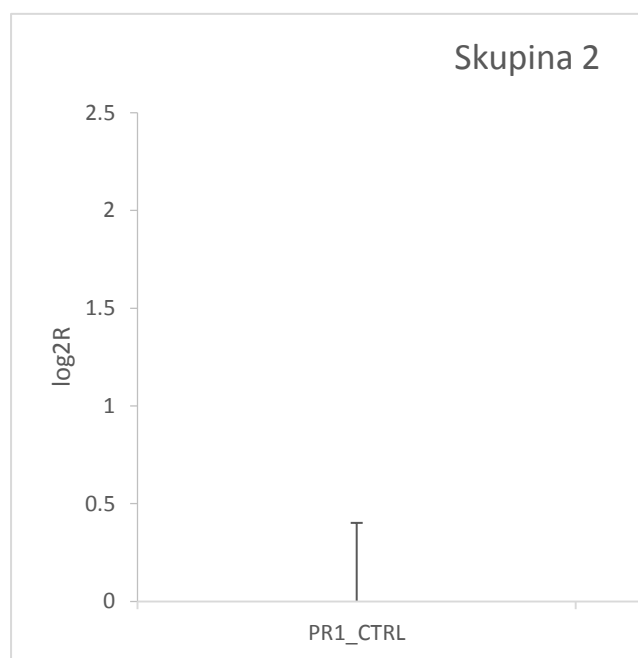
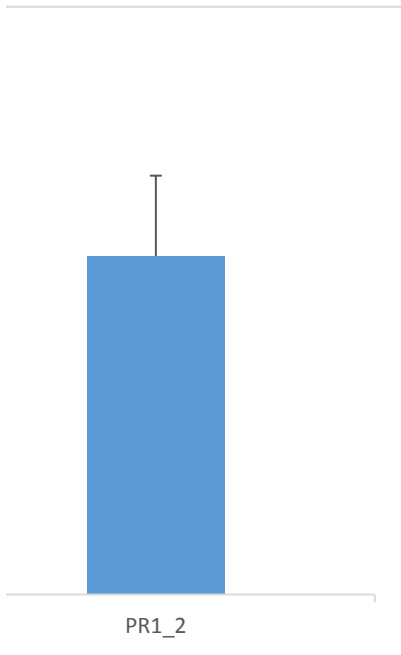


Name	Cp	Průměr	SD	dCt	SD	ddCt	SD	R
PR1_CTRL	30.48	30.82	0.29	4.80	0.40		0.40	1
PR1_CTRL	30.8							
PR1_CTRL	31.18							
PR1_2	27.98	27.95	0.08	3.07	0.09	-1.73	0.41	3.32
PR1_2	28.02							
PR1_2	27.84							
EF1a_CTRL	25.63	26.02	0.28					
EF1a_CTRL	26.28							
EF1a_CTRL	26.16							
EF1a_2	24.9	24.88	0.05					
EF1a_2	24.93							
EF1a_2	24.81							



log2R	SD
0	0.40
1.73	0.41



Name	Cp	Kopie	Průměr	SD	Poměr G/HG	SD
PR1_CTRL	30.48	1821	1483	274	0.013	0.006
PR1_CTRL	30.8	1476				
PR1_CTRL	31.18	1150				
PR1_2	27.98	9407	9628	495	0.040	0.003
PR1_2	28.02	9164				
PR1_2	27.84	10313				
EF1a_CTRL	25.63	149616	118337	22350		
EF1a_CTRL	26.28	98762				
EF1a_CTRL	26.16	106633				
EF1a_2	24.9	238545	241742	7943		
EF1a_2	24.93	234016				
EF1a_2	24.81	252667				

<b>R</b>	<b>SD</b>	<b>log2R</b>	<b>SD</b>
1.00	0.01	<b>0.00</b>	<b>0.01</b>
3.18	-0.81	<b>1.67</b>	<b>-0.43</b>

log c	Name	Cp	Průměr	SD
7	PR1	17.37	17.35	0.25
7	PR1	17.04		
7	PR1	17.65		
6	PR1	20.88	20.93	0.08
6	PR1	21.04		
6	PR1	20.87		
5	PR1	24.4	24.32	0.06
5	PR1	24.3		
5	PR1	24.26		
4	PR1	27.87	27.91	0.04
4	PR1	27.96		
4	PR1	27.9		
7	EF1a	18.62	18.53	0.10
7	EF1a	18.4		
7	EF1a	18.58		
6	EF1a	23.4	23.50	0.09
6	EF1a	23.48		
6	EF1a	23.62		
5	EF1a	26.01	26.13	0.09
5	EF1a	26.24		
5	EF1a	26.15		
4	EF1a	29.61	29.67	0.05
4	EF1a	29.66		
4	EF1a	29.73		

