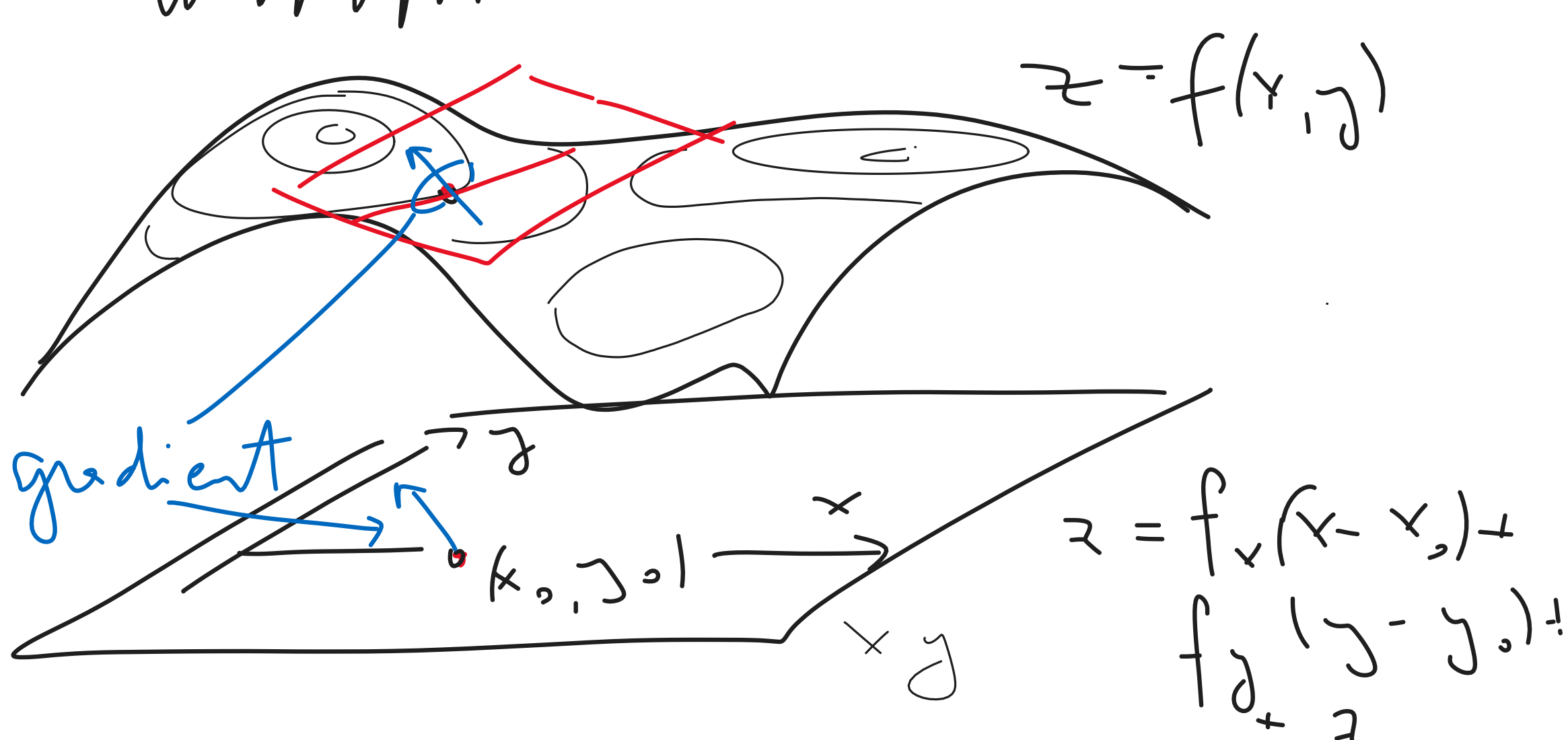
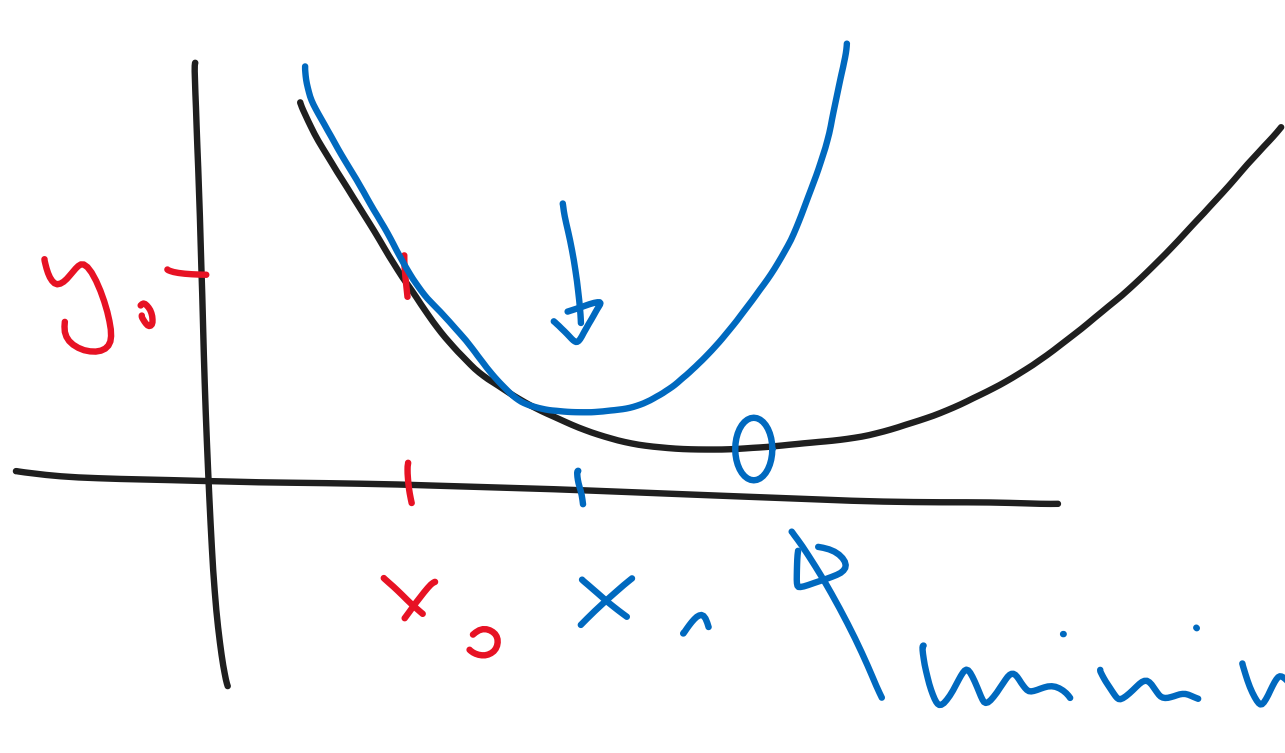


$$y = y_0 + f'(x_0)(x - x_0)$$

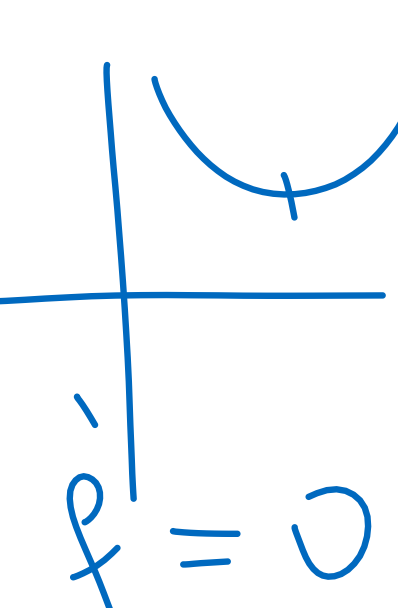
↑
máje gradient



$$z = f_x(x - x_0) + f_y(y - y_0)$$



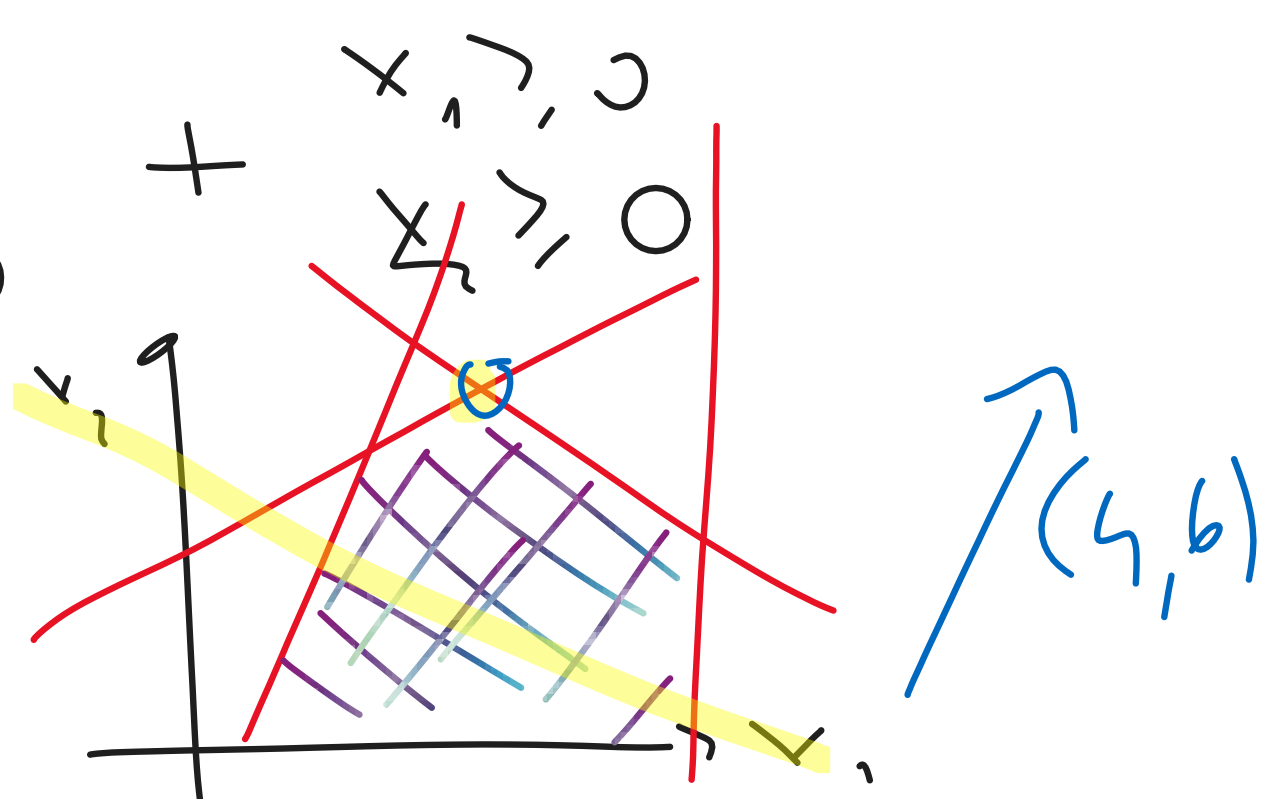
$$y = (x - r)^2$$



x_1 šachy x_2 mliek

$$\begin{aligned} x_1 + 2x_2 &\leq 120 \\ x_1 + 4x_2 &\leq 180 \\ x_1 &\geq x_2 + 90 \\ x_1 &\leq 110 \end{aligned}$$

$$4x_1 + 6x_2 = C$$



$$x_1 + 2x_2 + x_3 = 120$$

$$x_1 + 4x_2 + x_4 = 180$$

$$-x_1 + x_2 + x_5 = -90$$

$$x_1 + x_6 = 110$$

-4	6	0	0	0	0	0
1	2	1	0	0	0	120
1	4	0	1	0	0	180
-1	1	0	0	1	0	-90
1	0	0	0	0	1	110

0	-10	0	0	-40	360
0	3	1	0	10	70
0	5	0	1	10	90
1	-1	0	0	-10	90
0	1	0	0	1	20

