



Společnost a neživá příroda v regionu střední Evropy

Kurz univerzitního základu



SOPKY

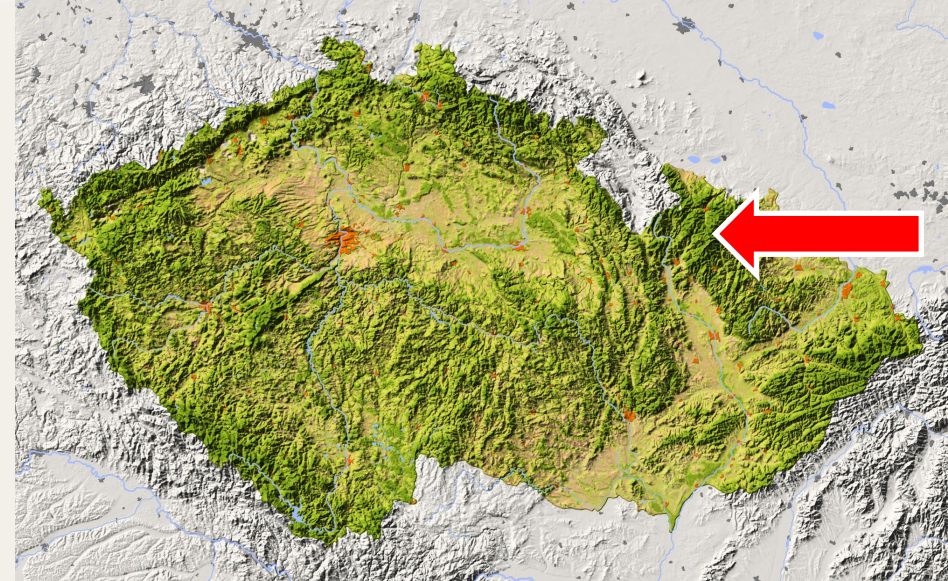
Železná hůrka



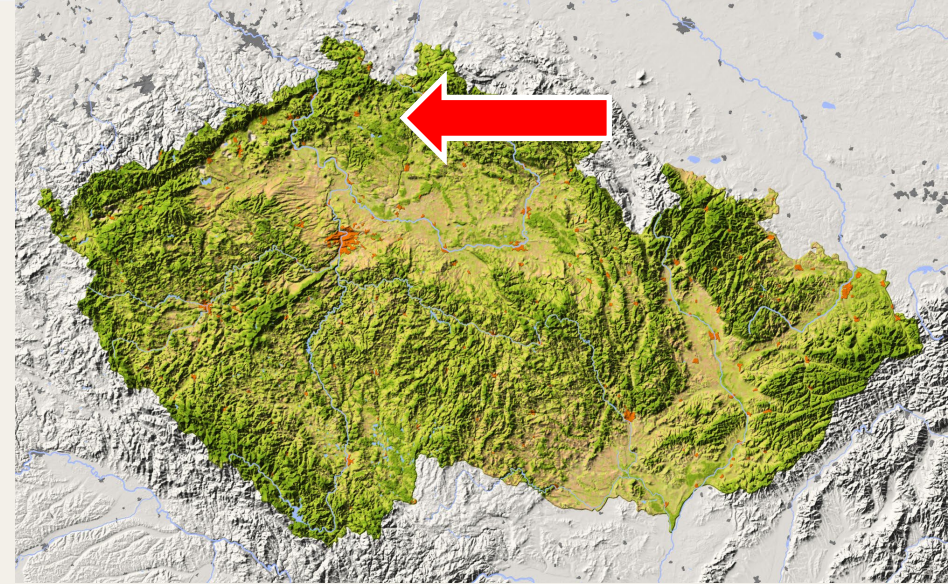
Komorní hůrka



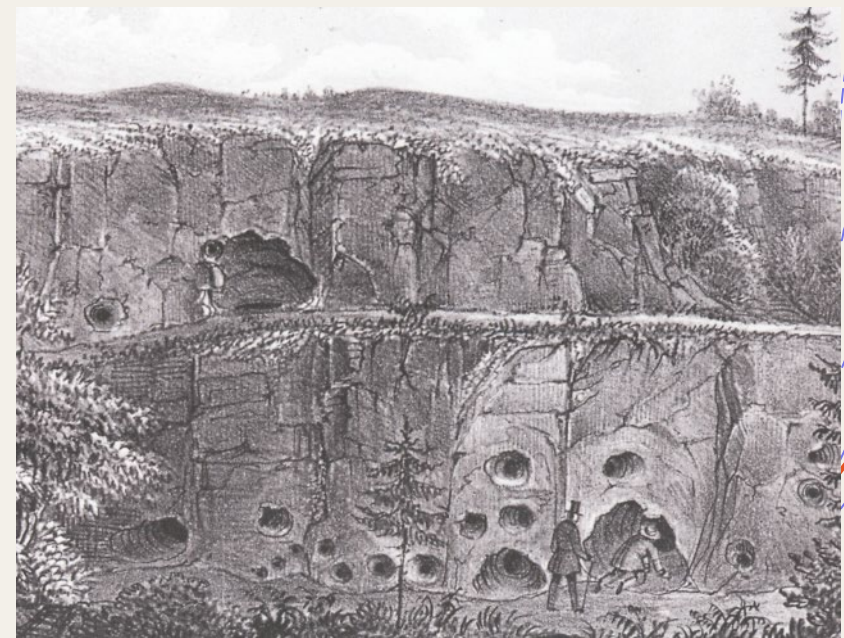
Uhlířský vrch, Venušina sopka



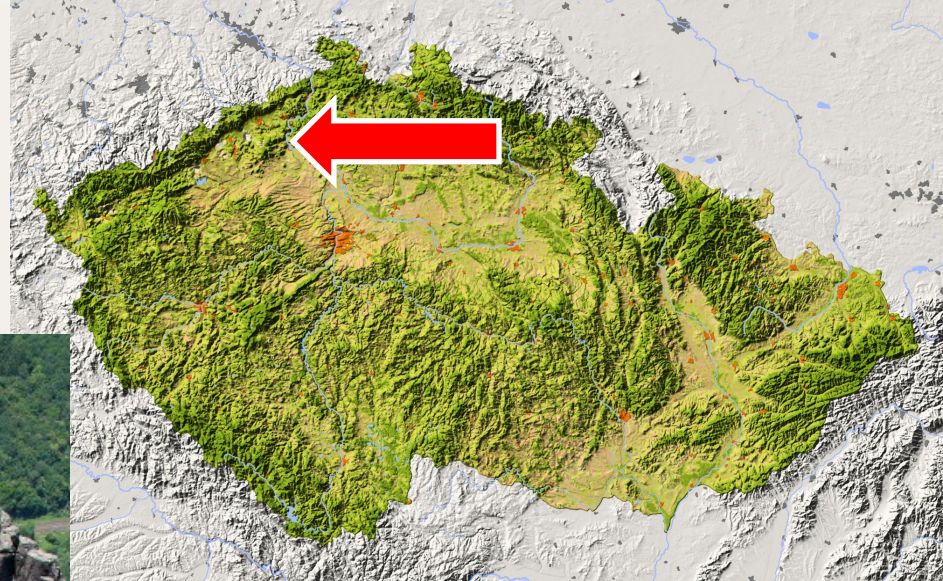
Zlatý vrch



Skalky skřítků



Bořeň



Čertova zed'

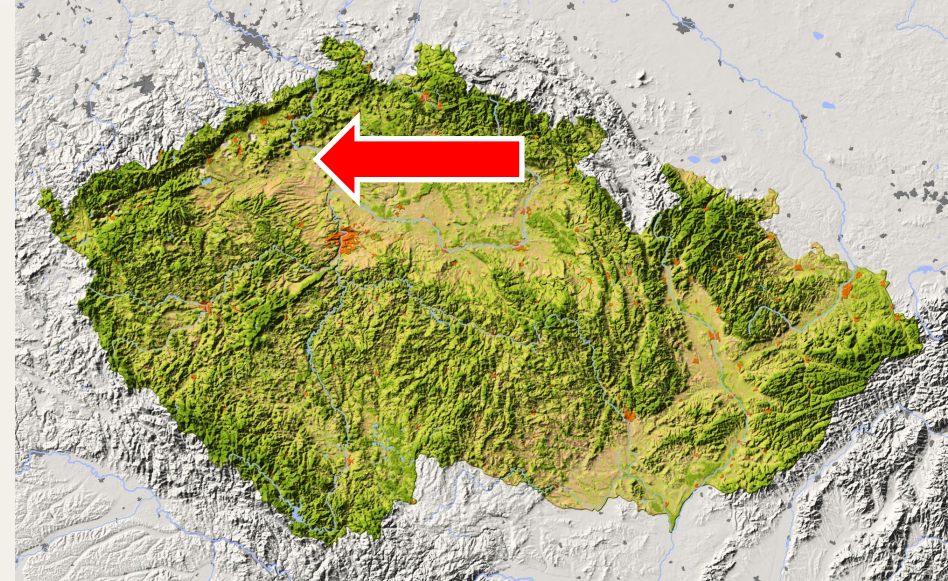




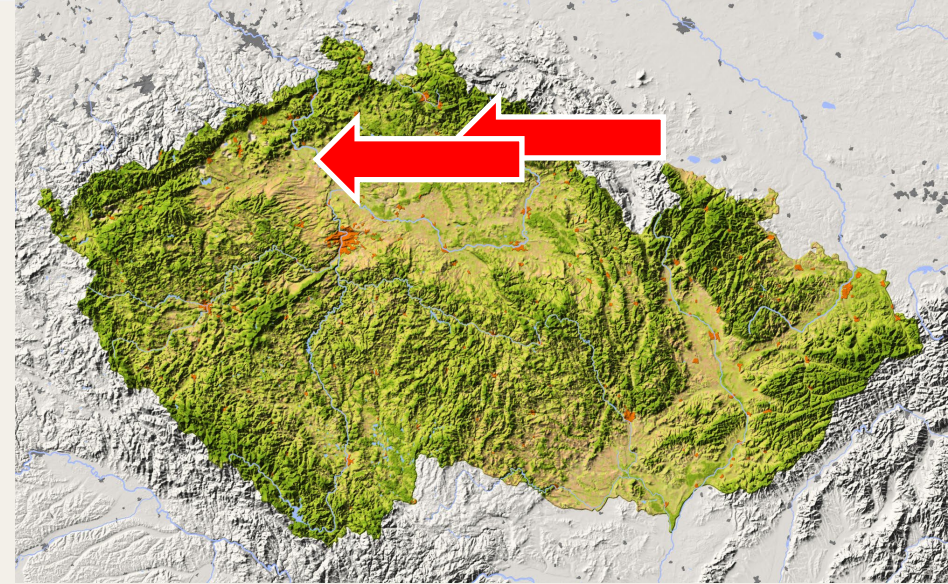
MAGMATICKÉ HORNINY



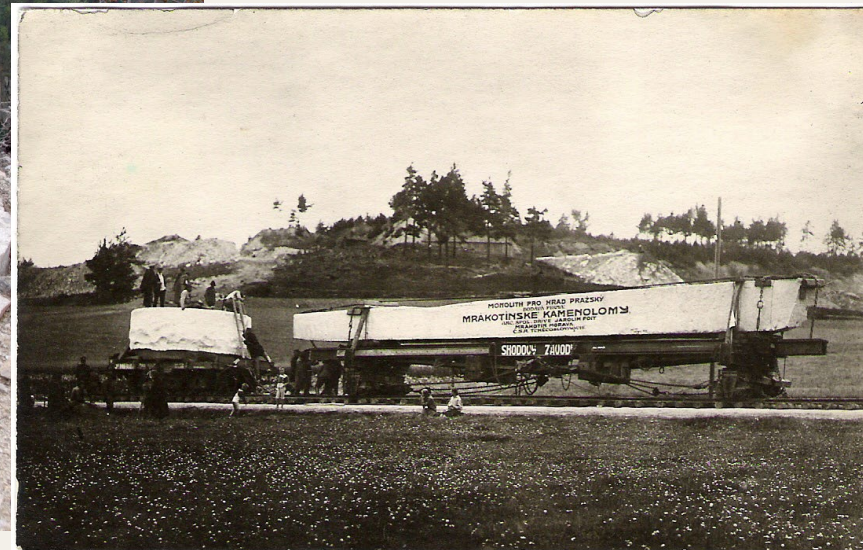
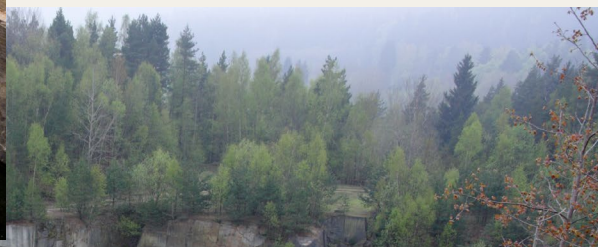
Hnojnice



České granáty



Mrákotínské žuly



Středočeský pluton



Středočeský pluton





METAMORFOVANÉ HORNINY

Granátová skála



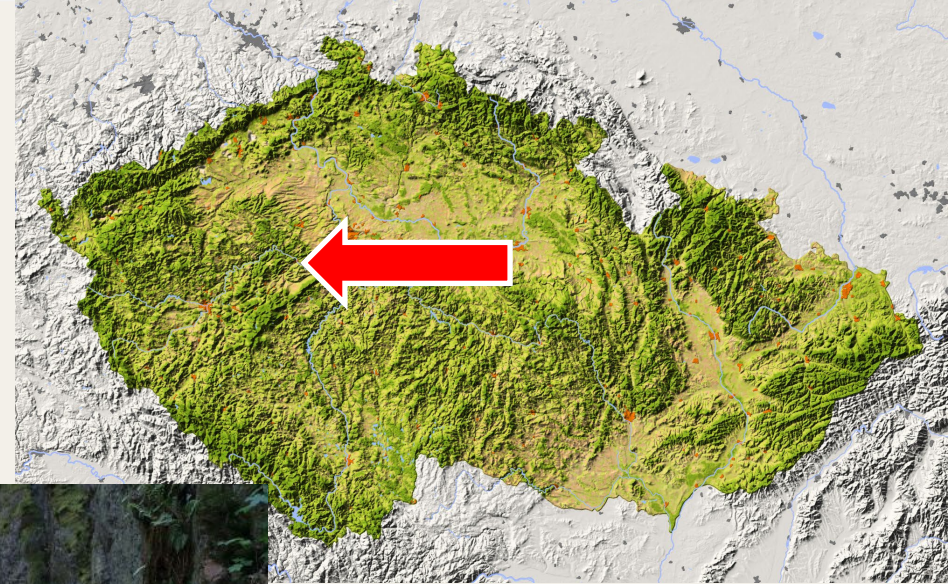
Vranovské vrásky



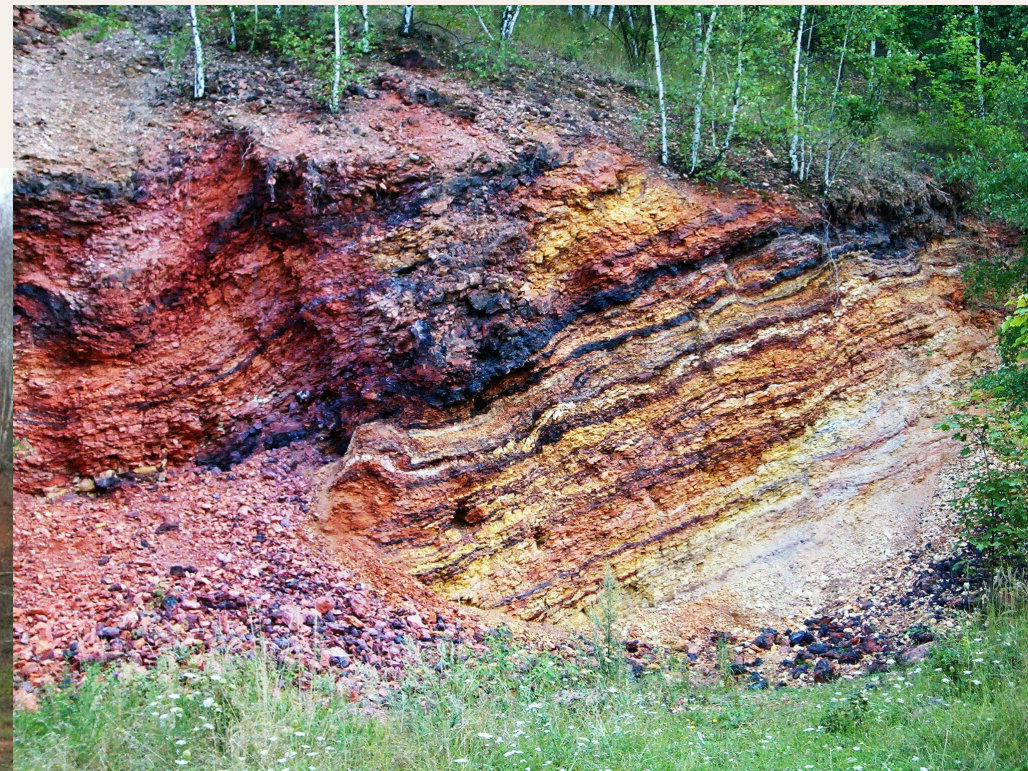


SEDIMENTÁRNÍ HORNINY

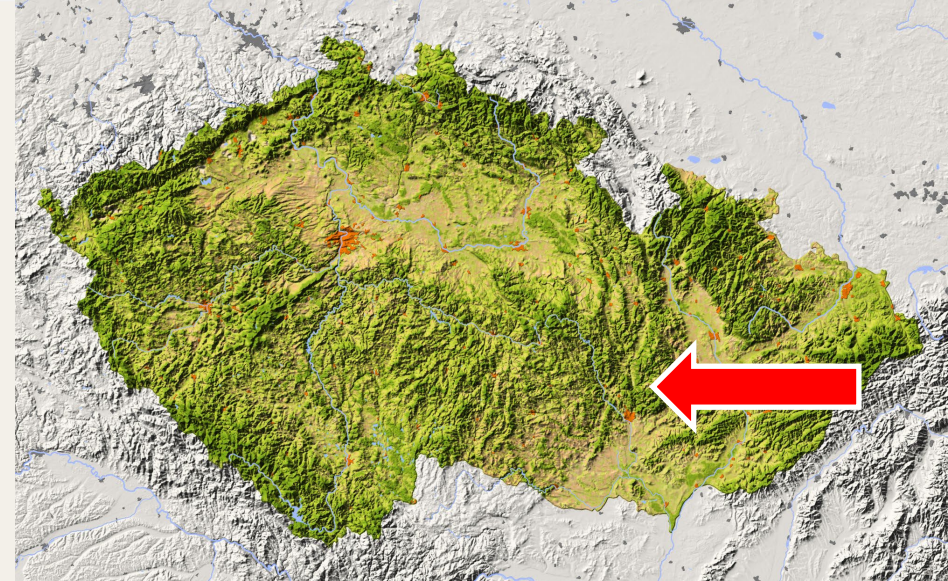
Barrandien



Dobrčice



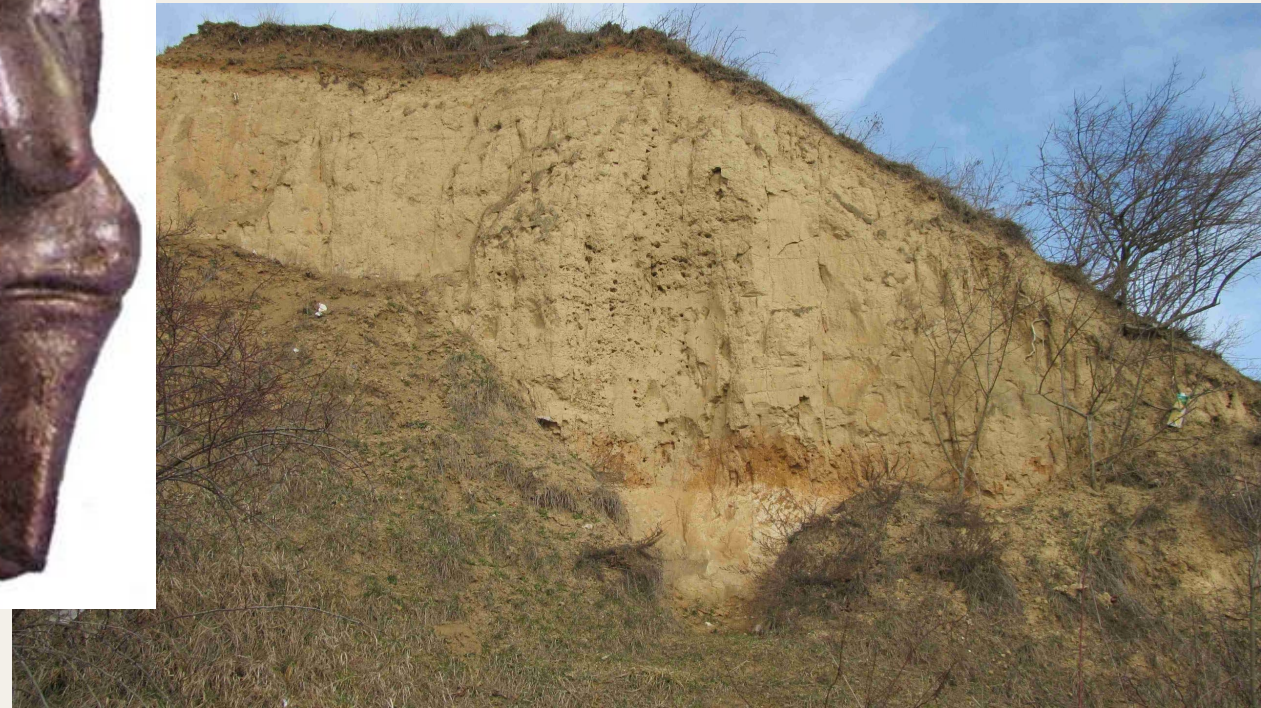
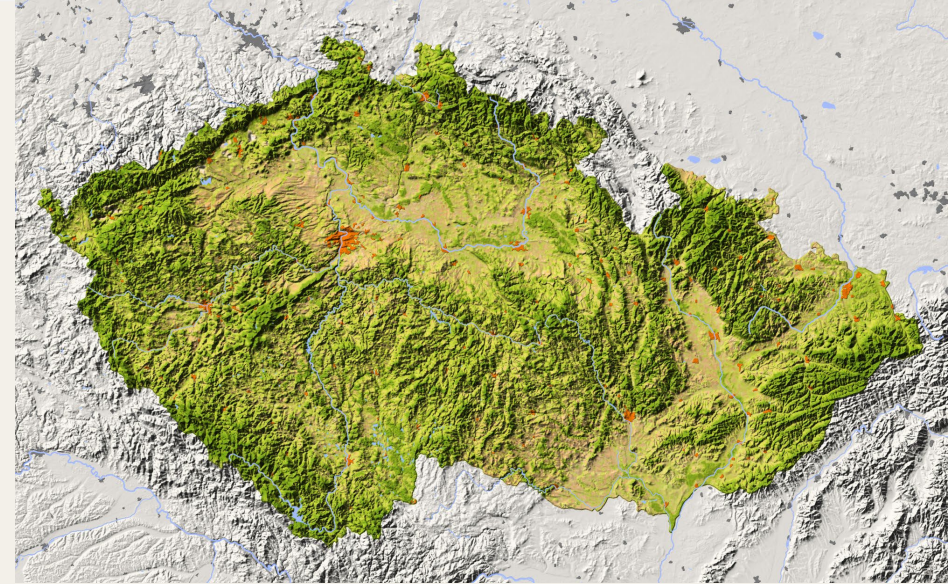
Rudice Seč



Megoňky

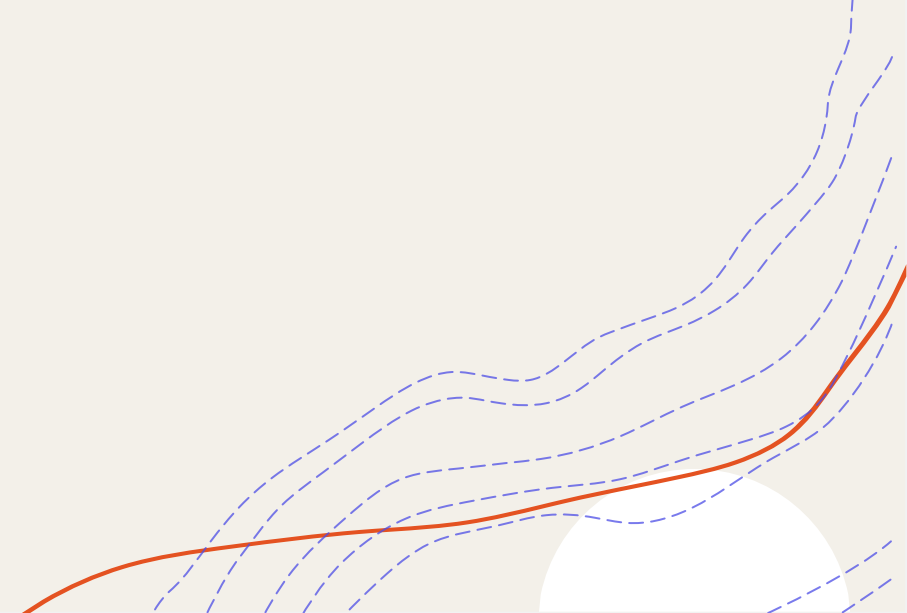


Spraše





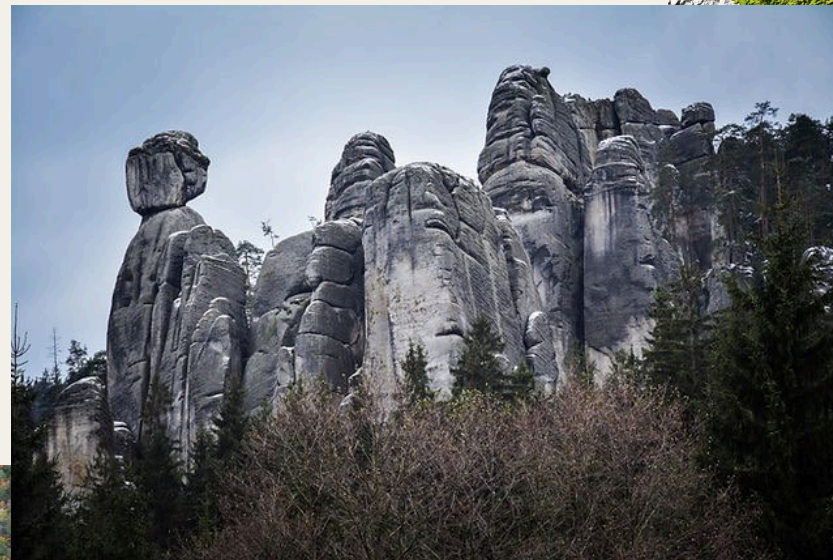
SKALNÍ MĚSTA



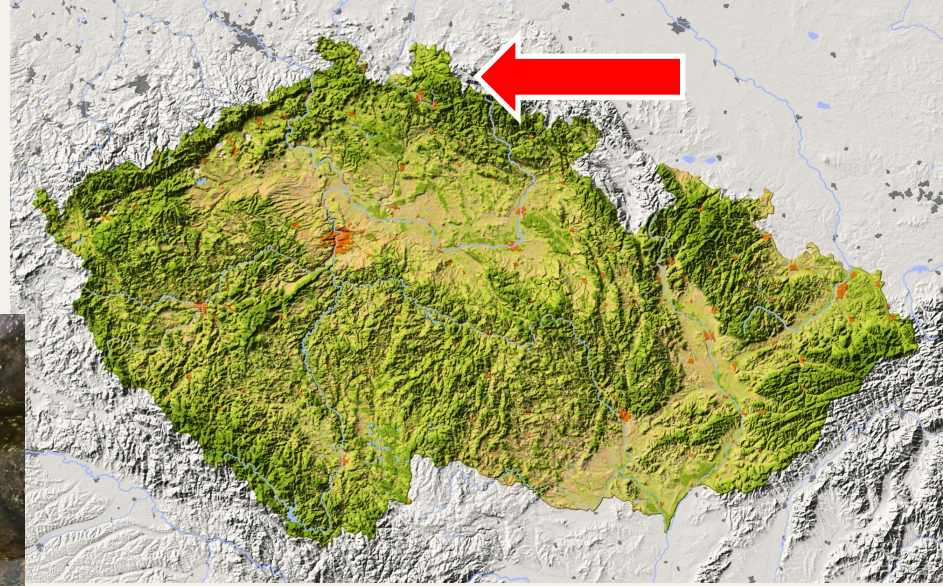
Česko-Saské Švýcarsko



Broumovsko



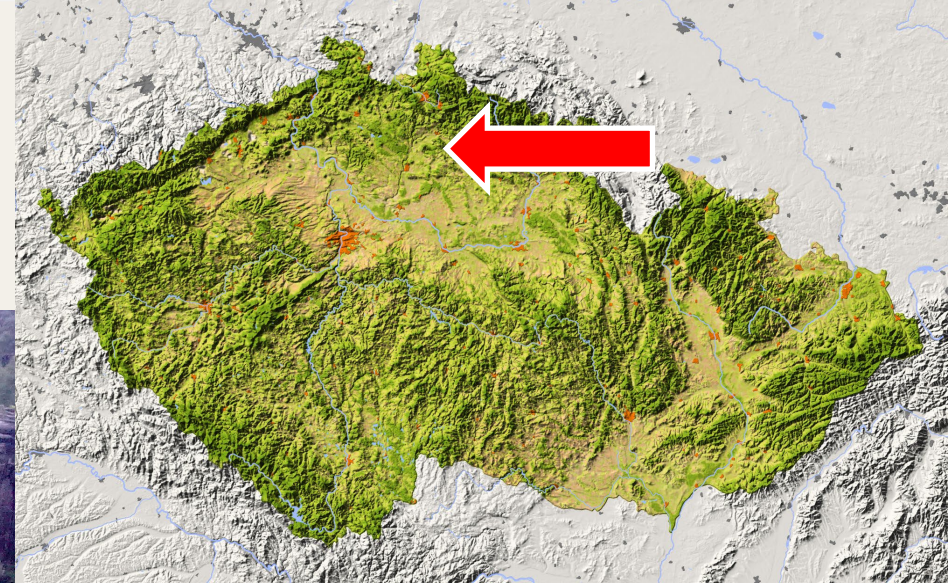
Stolové hory



Kokořínsko



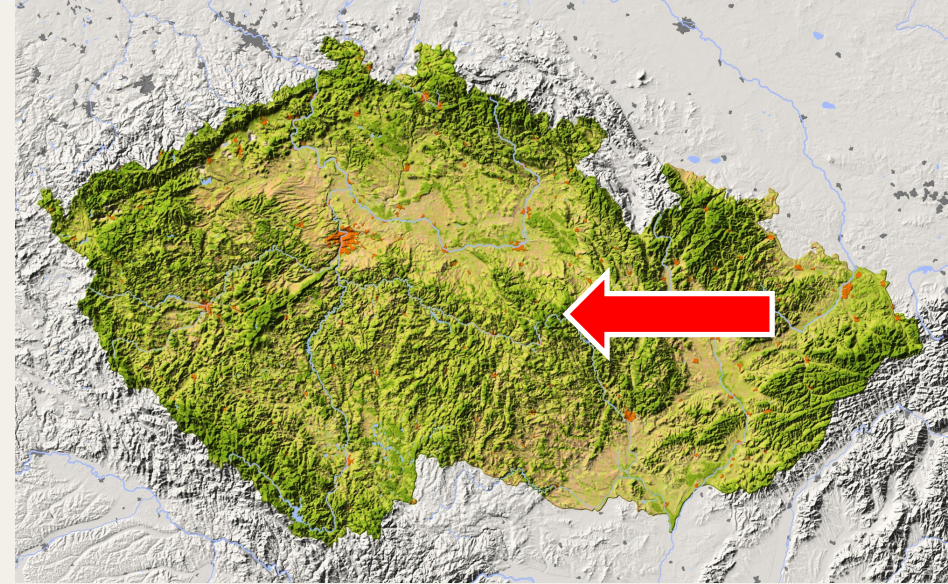
Český ráj



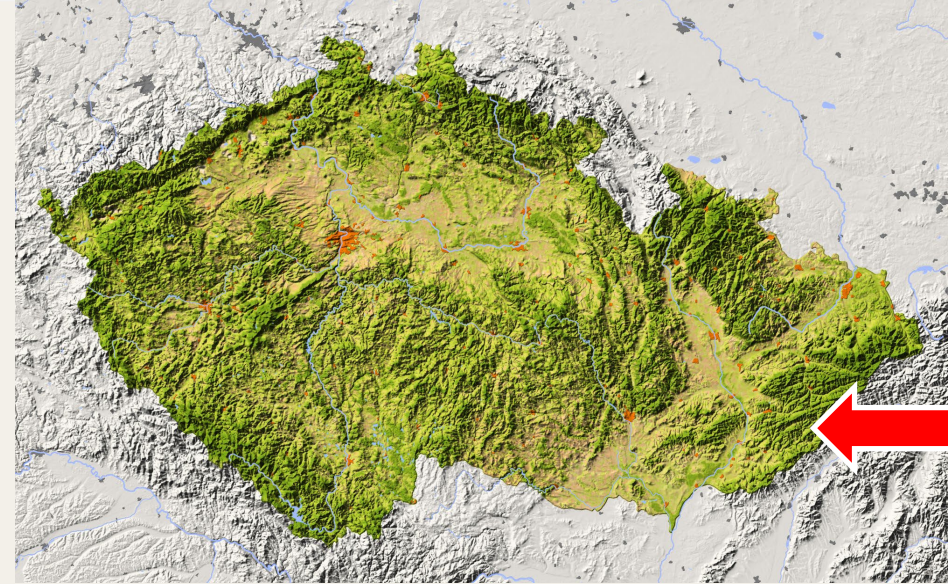
Pivnické rokle



Toulovcovy maštale

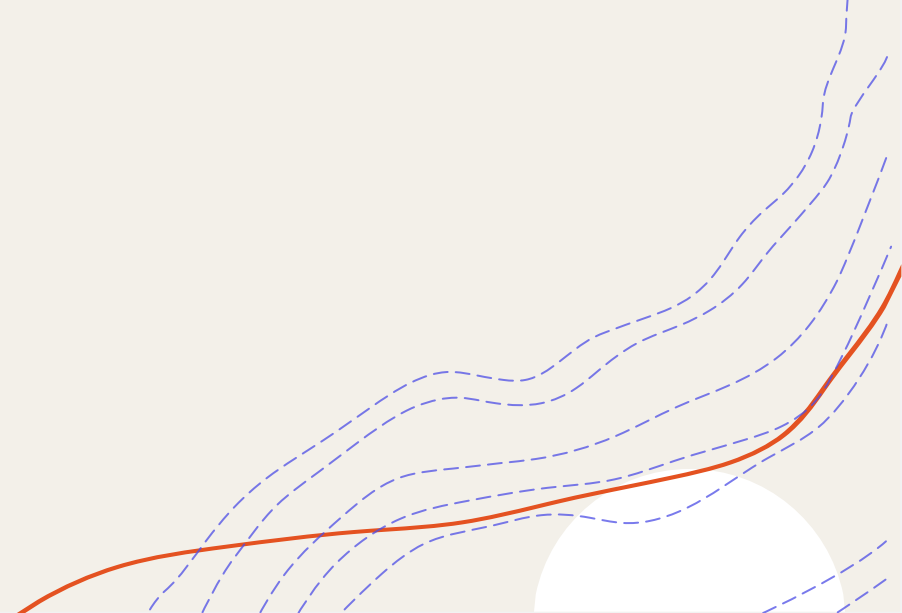


Půlčínské skály

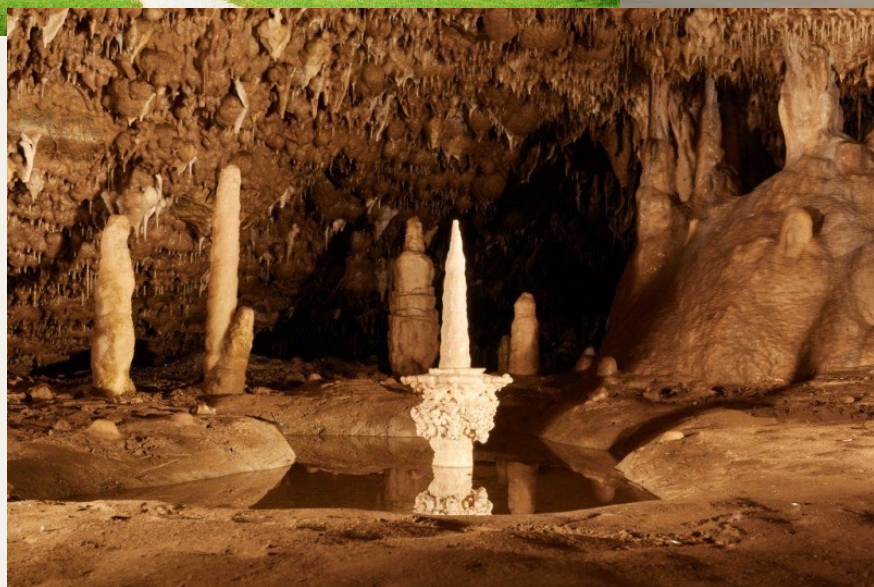
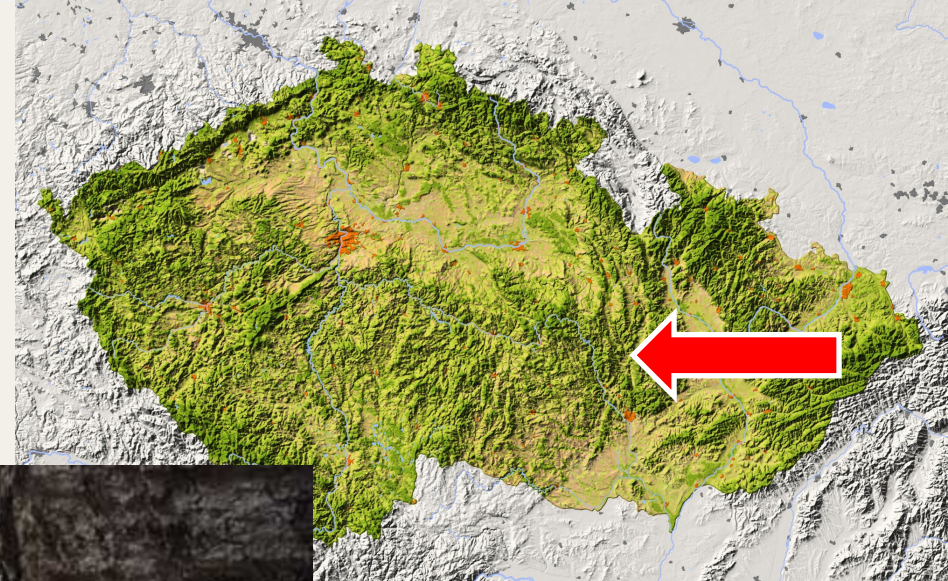




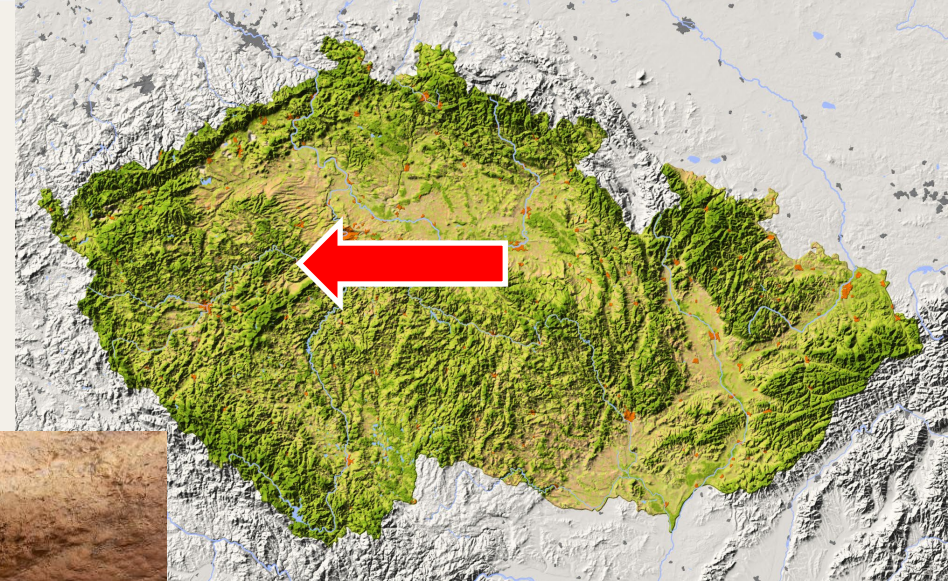
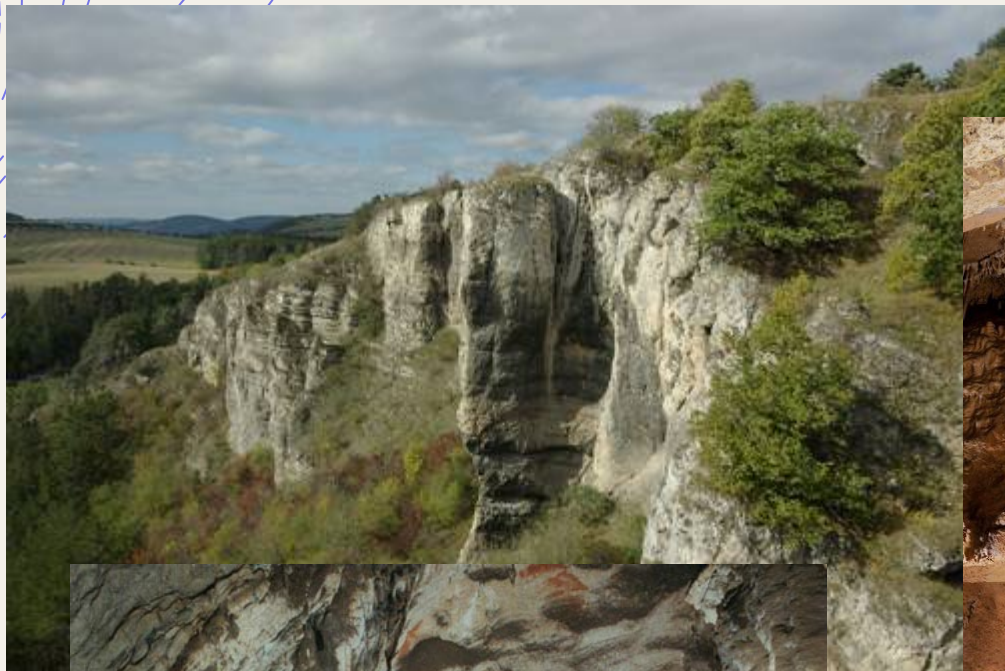
KRAS



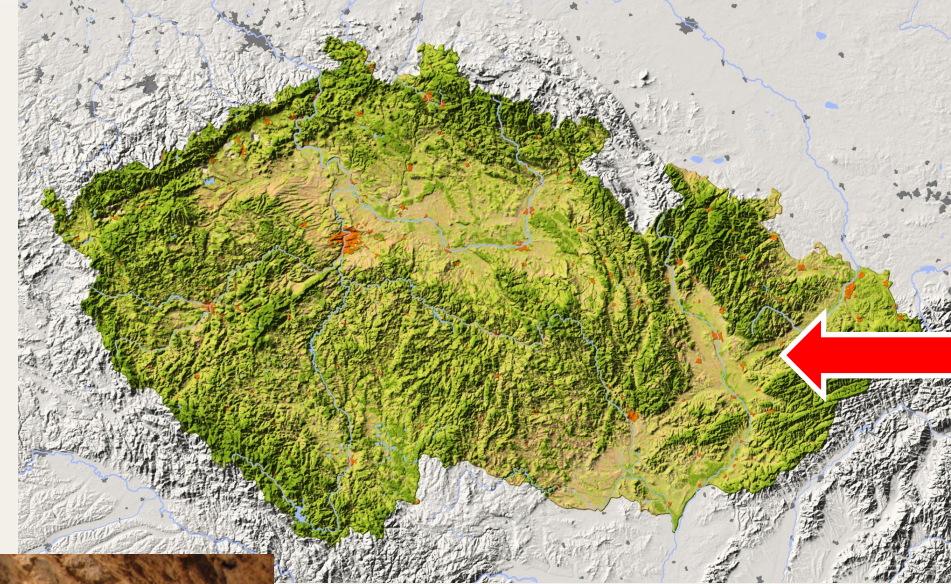
Moravský kras



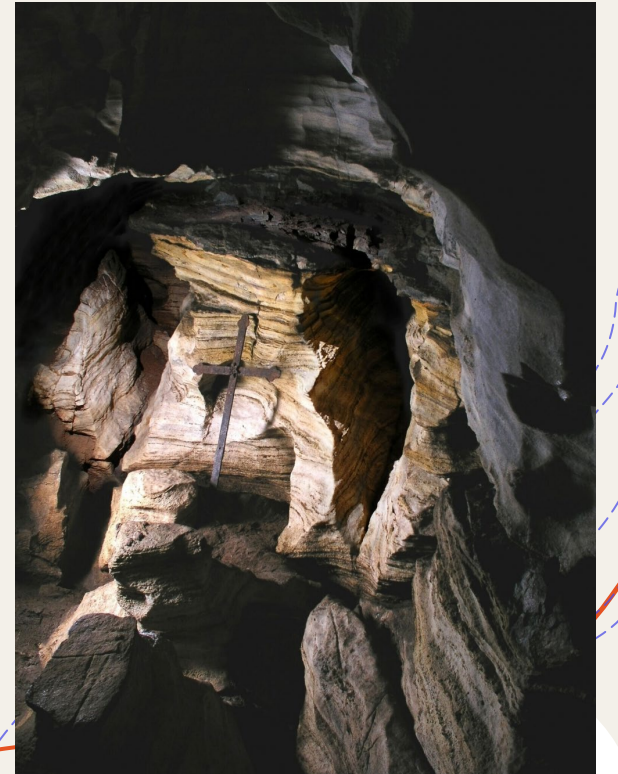
Český kras



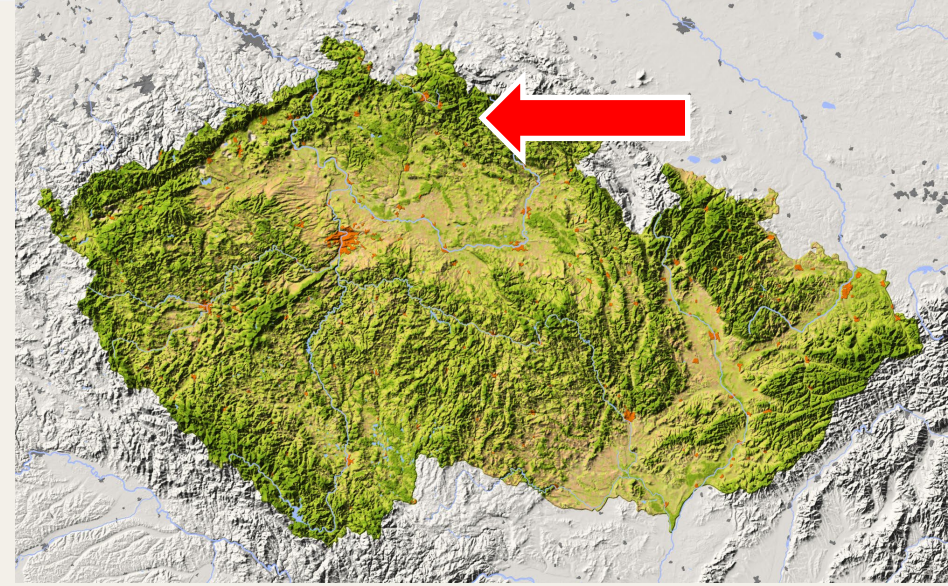
Hranický kras



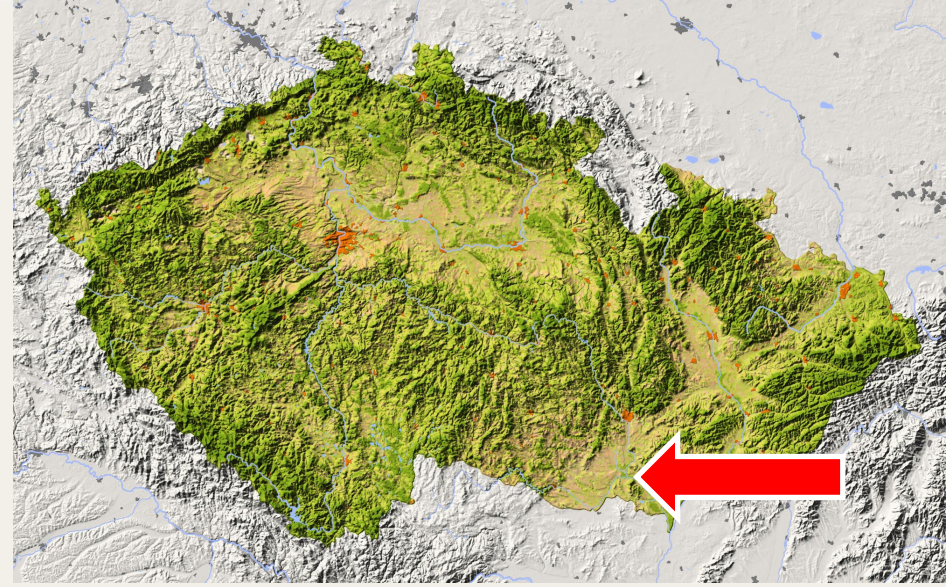
Chýnovský kras



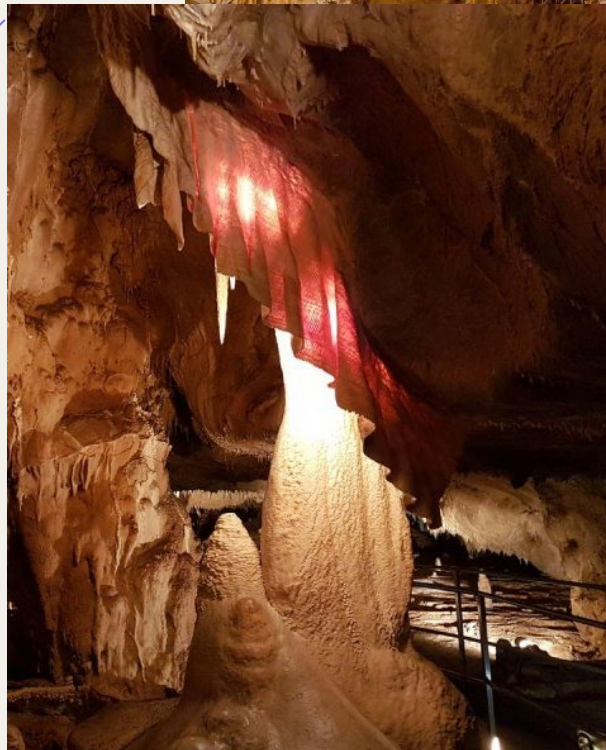
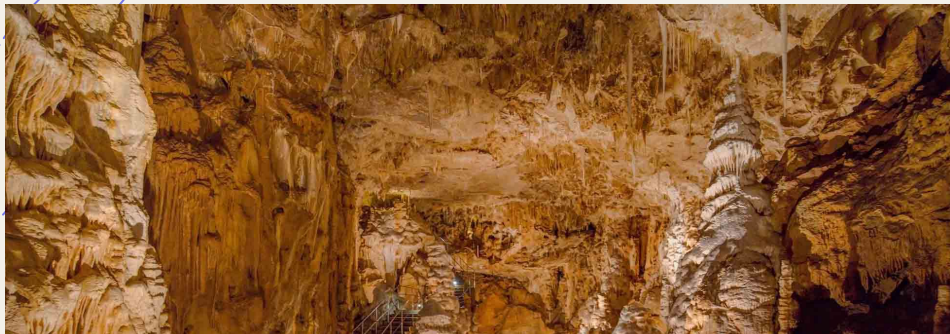
Bozkov



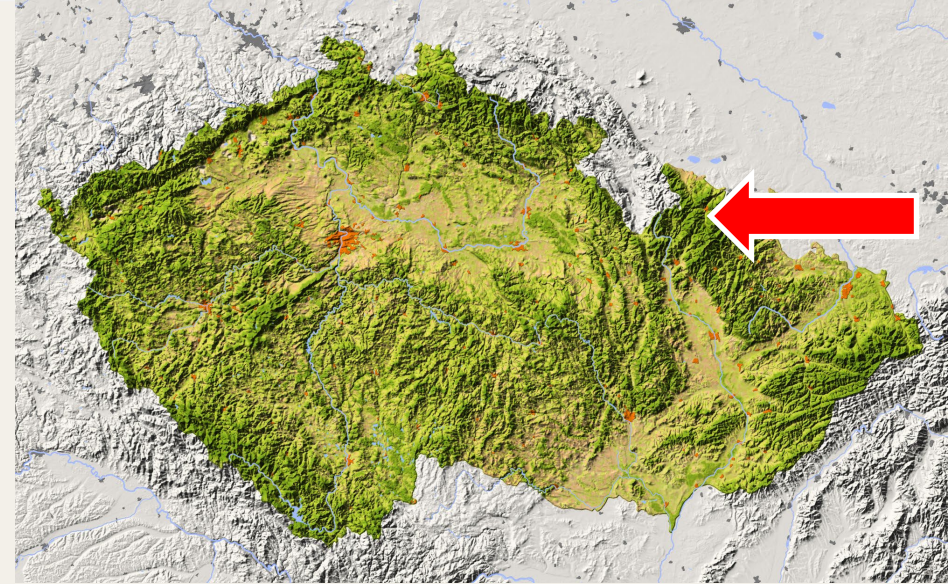
Turola



Středomoravské krasy



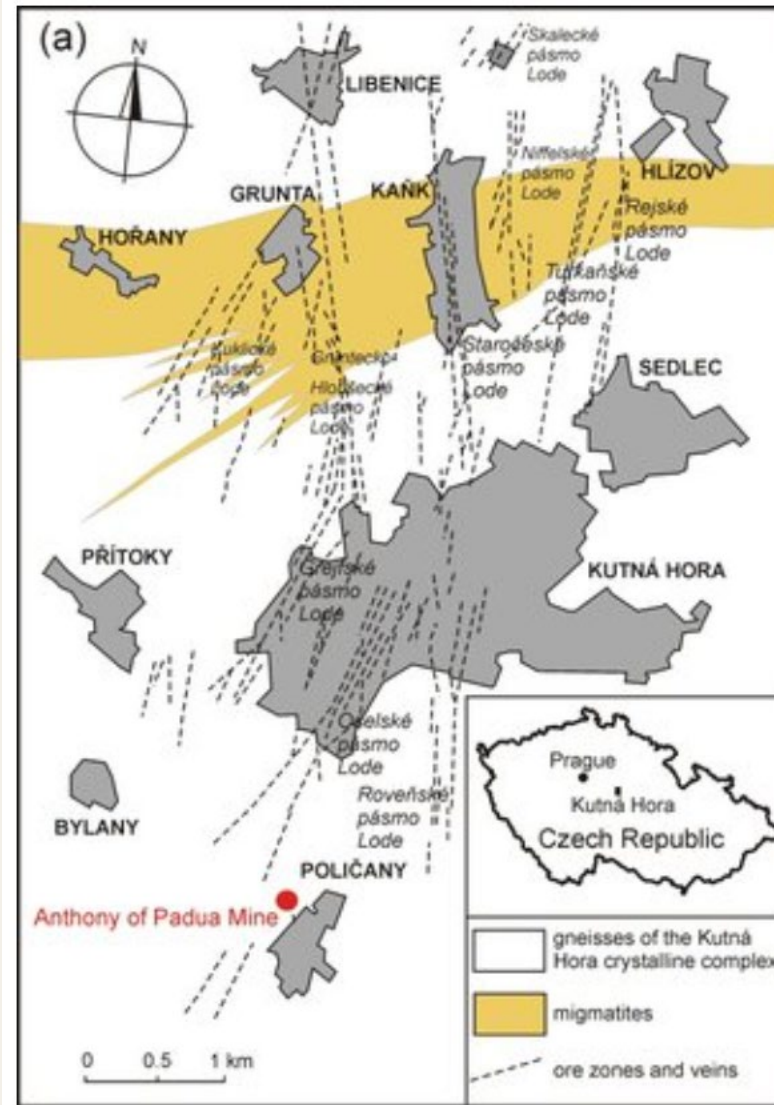
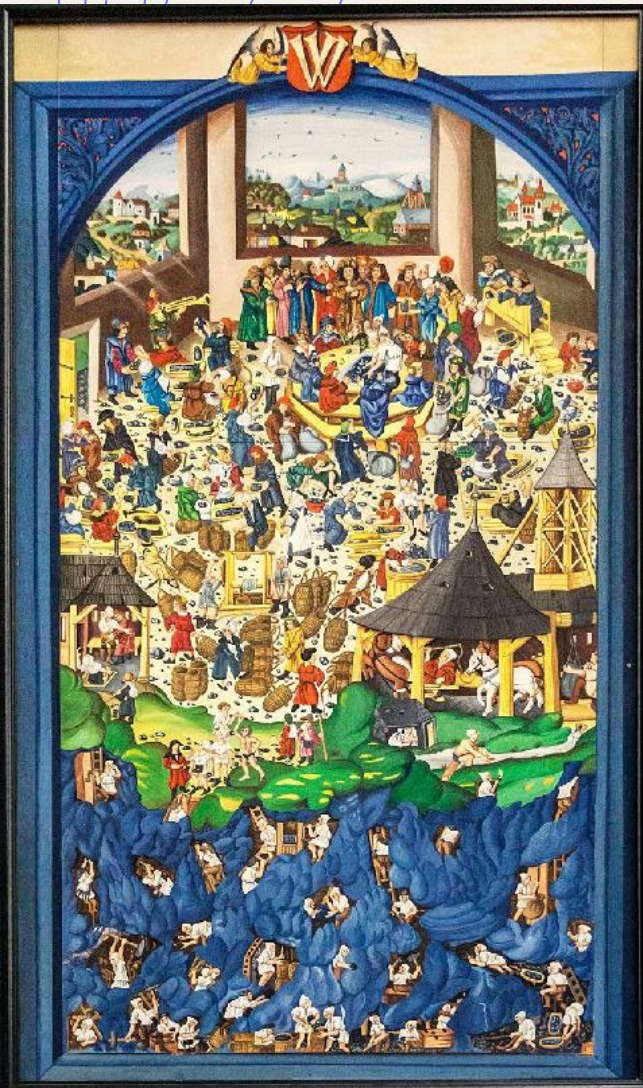
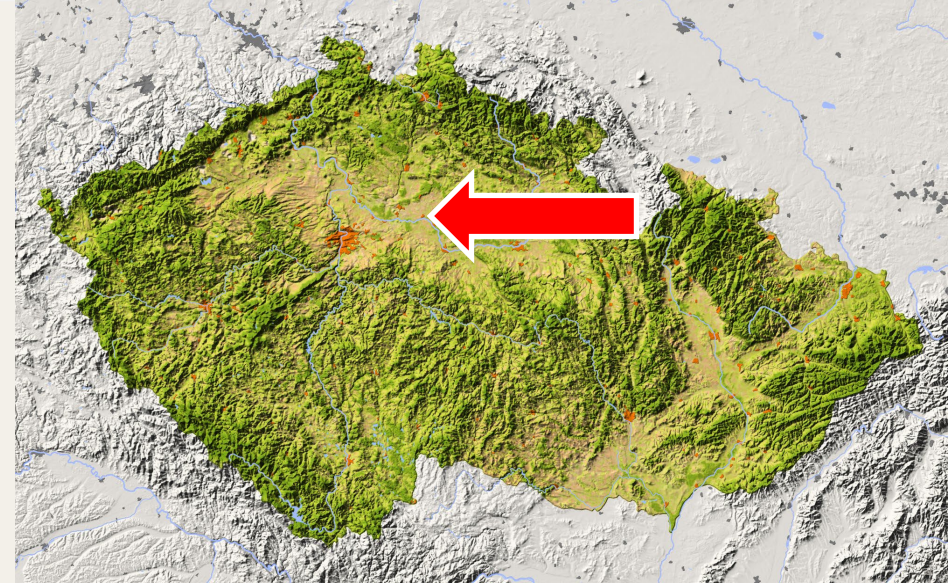
Jesenický kras



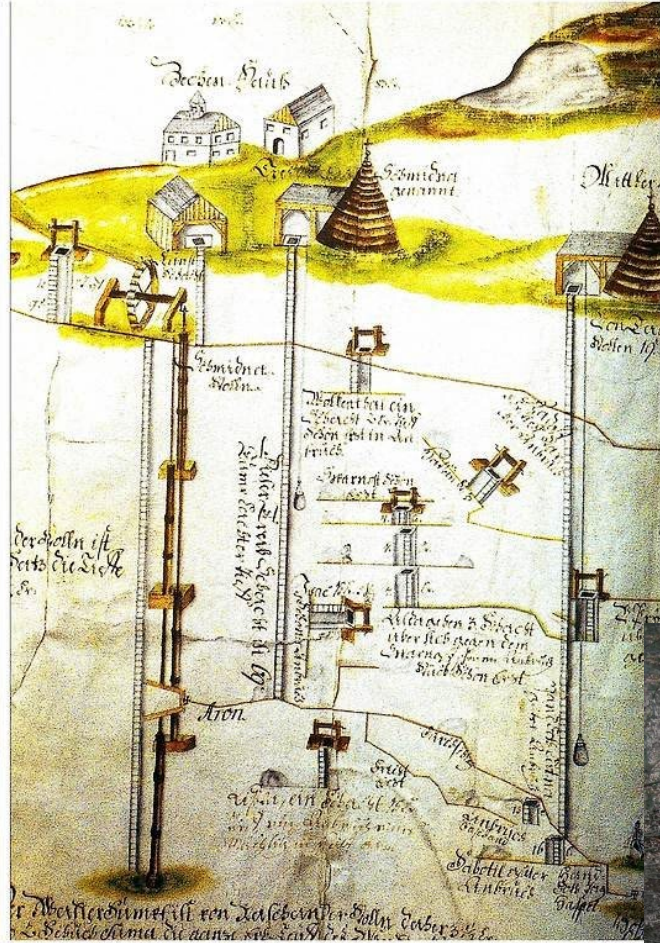


HORNICTVÍ

Kutná Hora

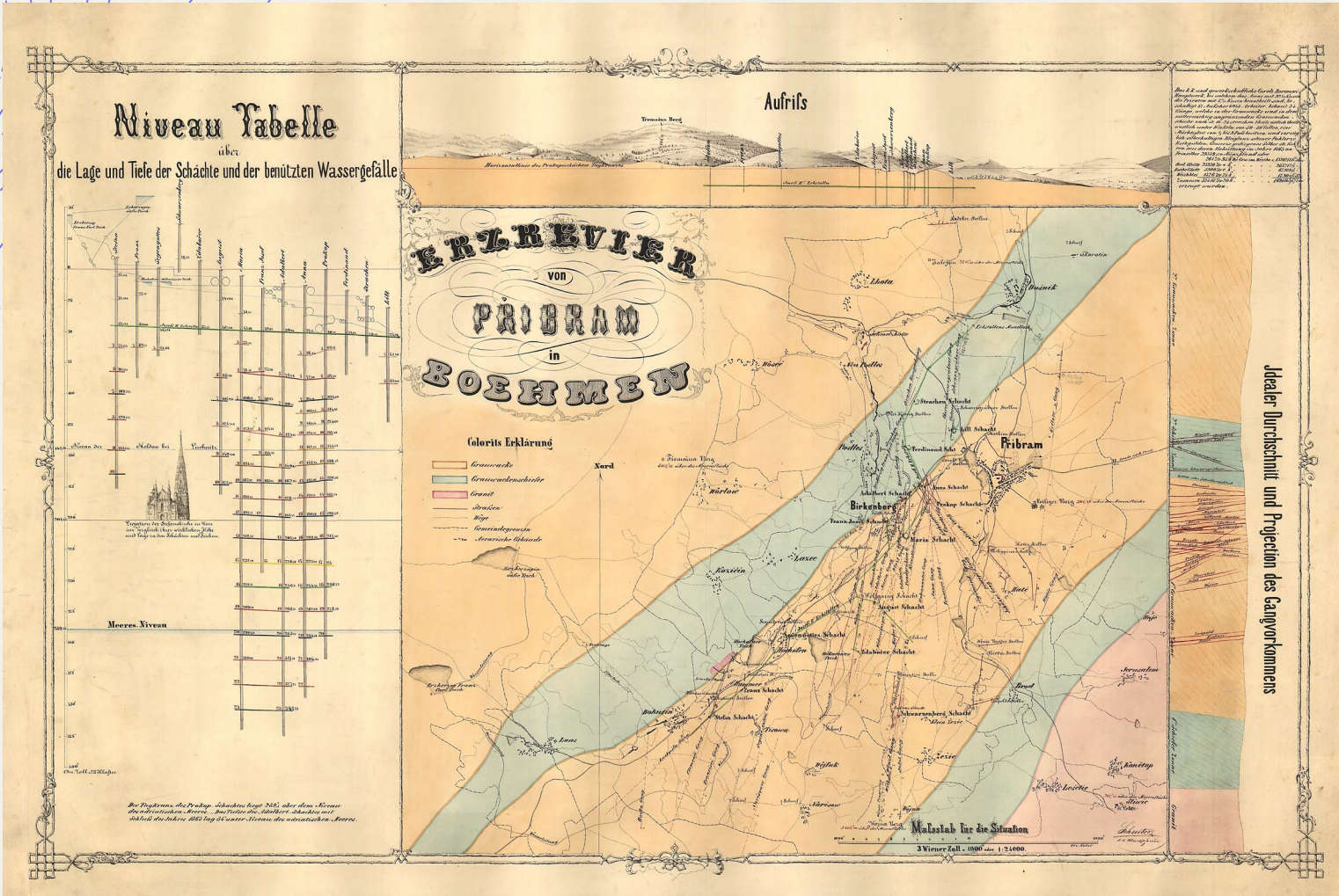


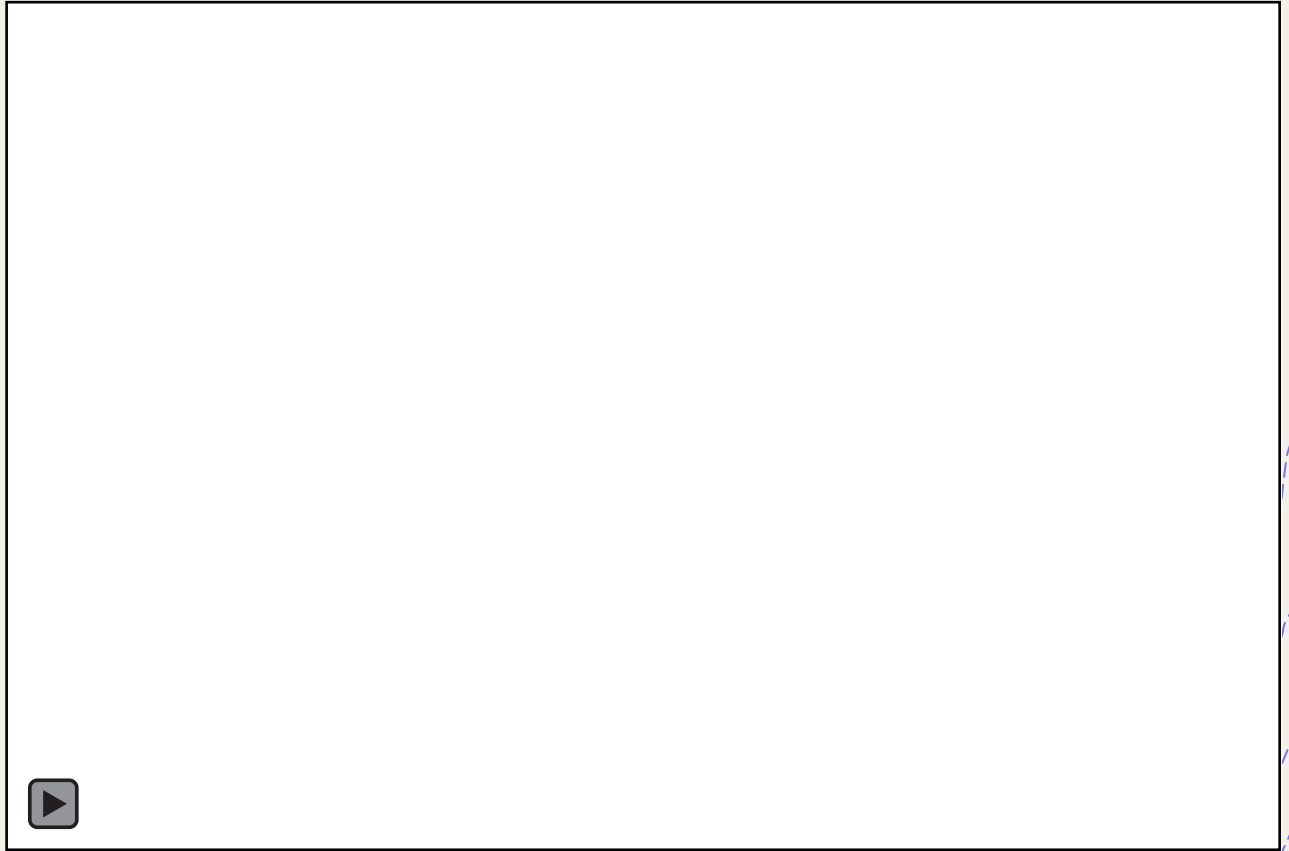
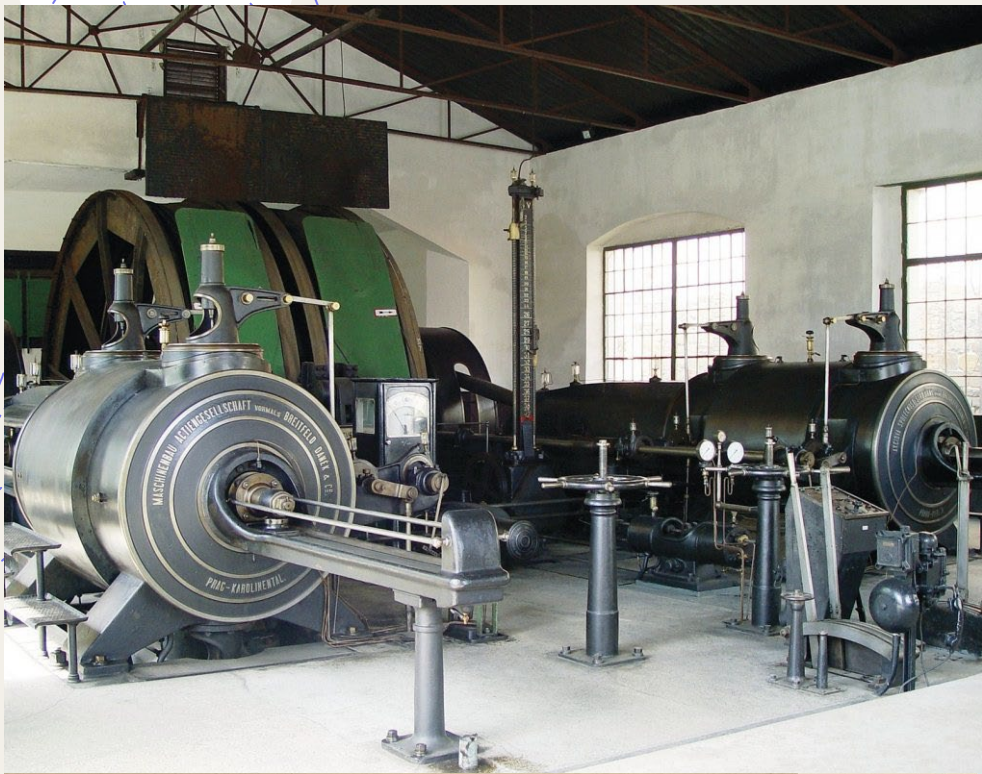




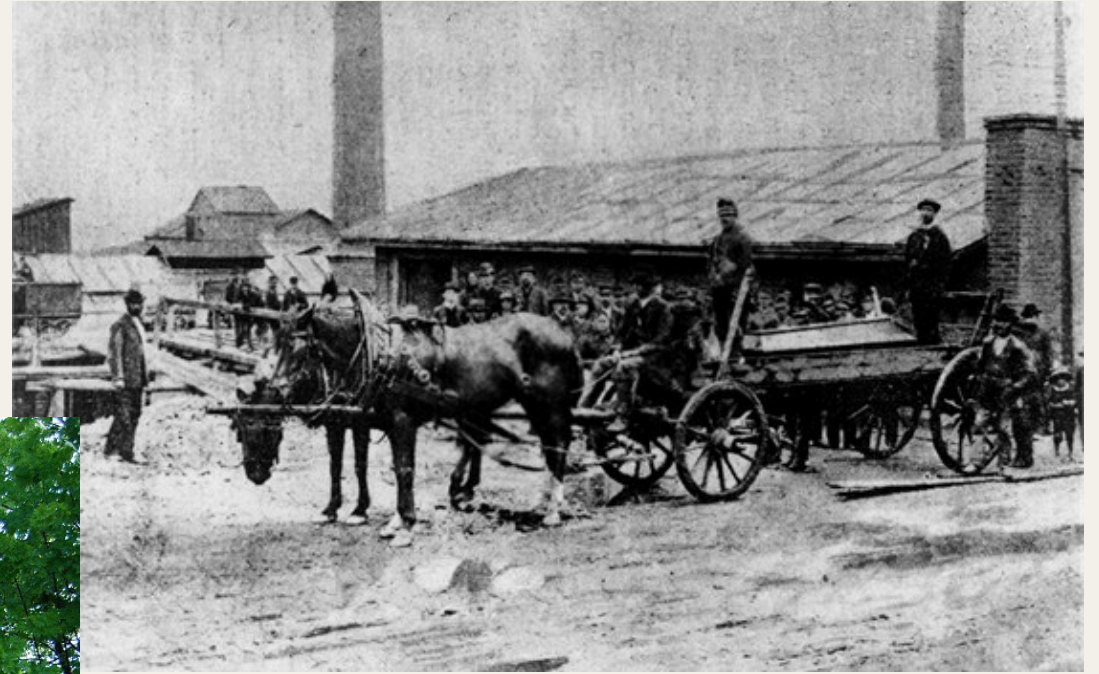


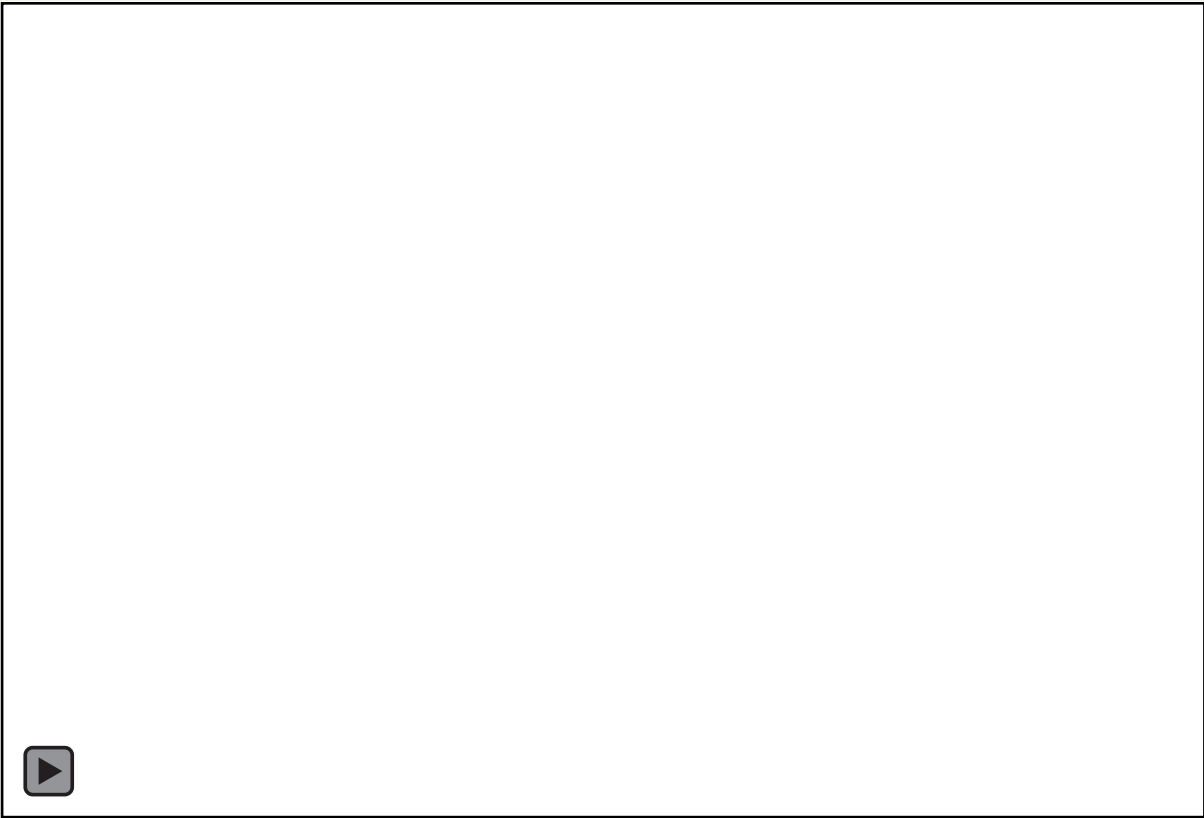
Příbramsko



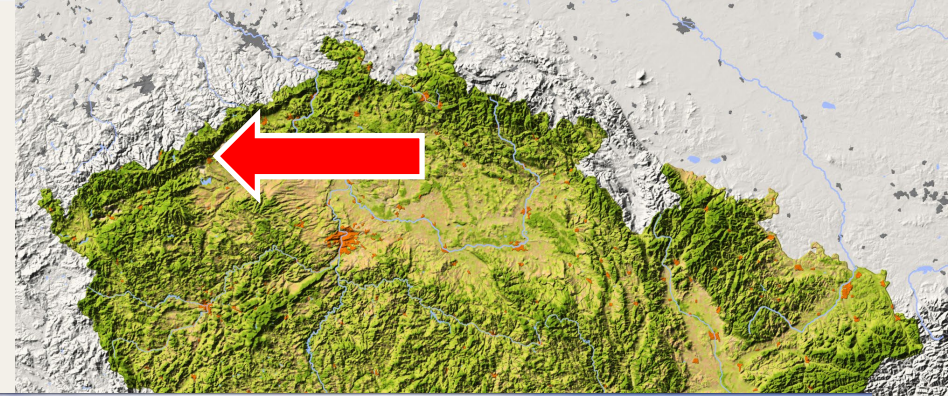








Krušné hory



Krušné hory



Krušné hory



Krušné hory



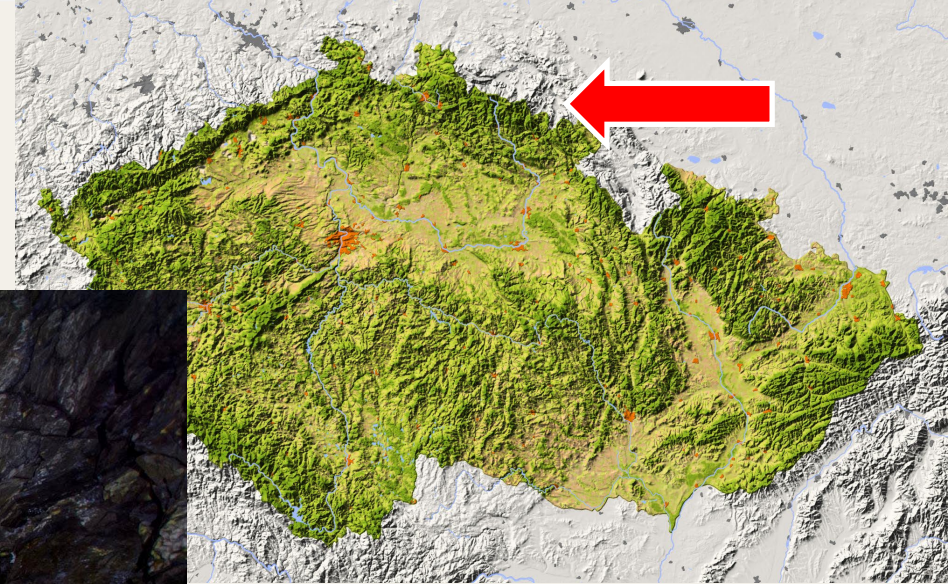
Krušné hory



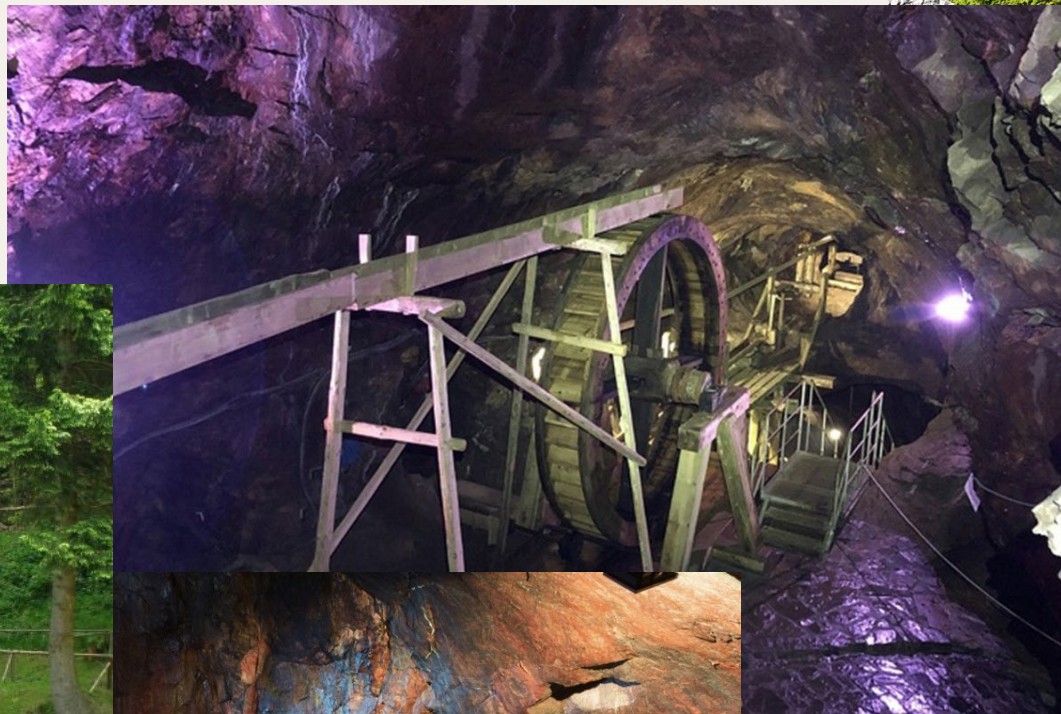
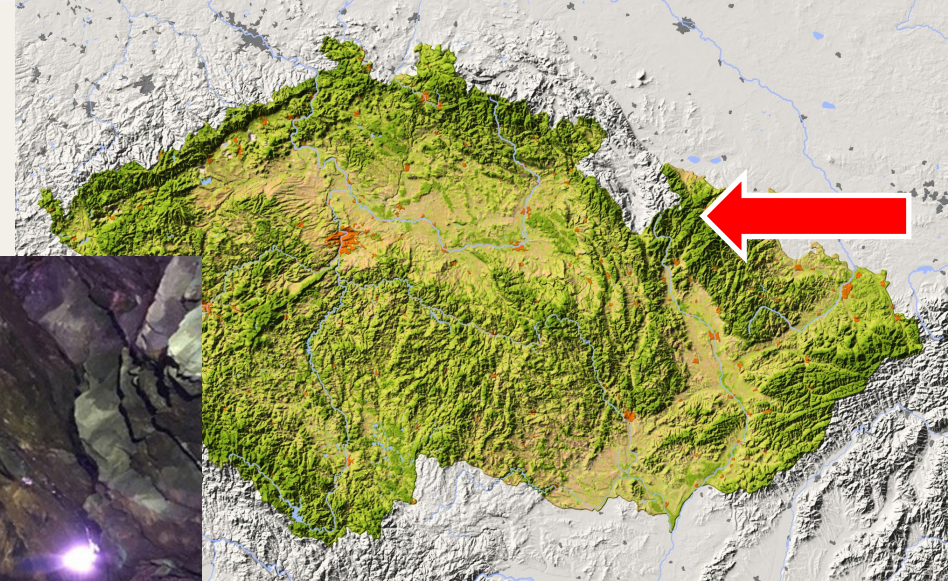
Krkonoše



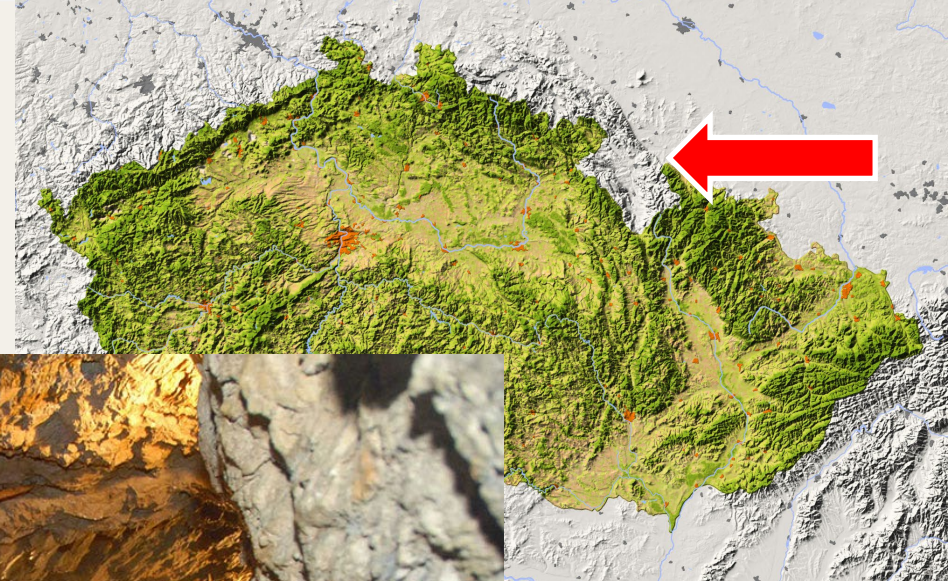
Krkonoše



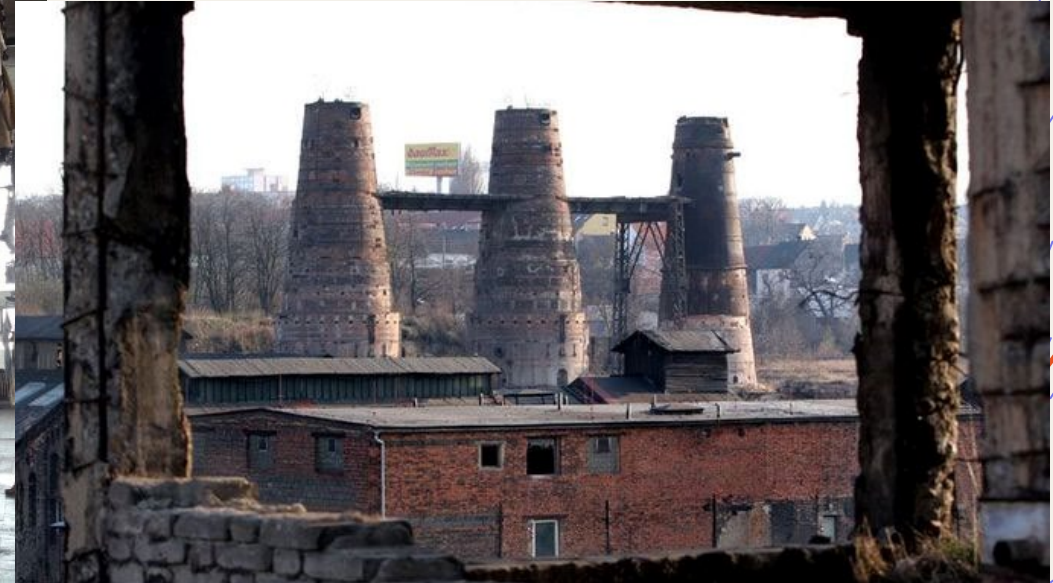
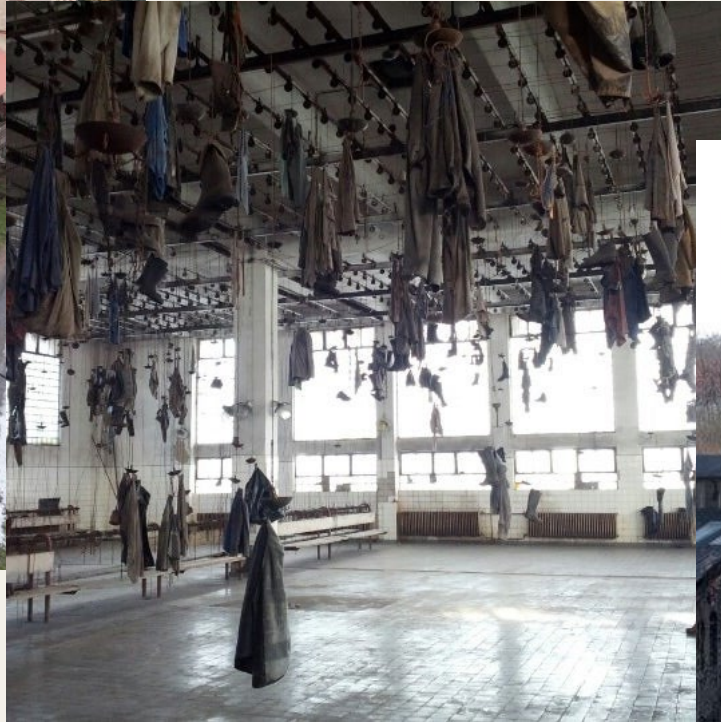
Jeseníky



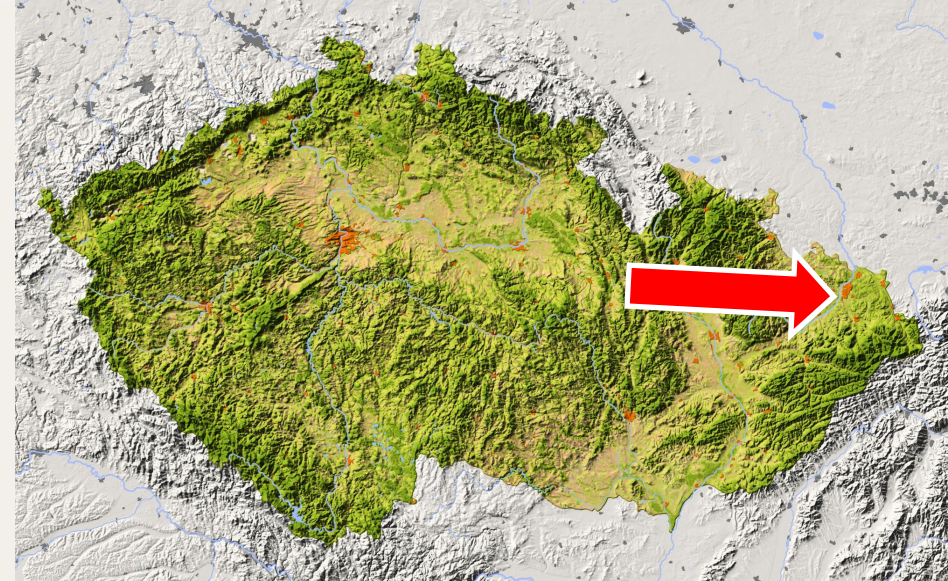
Jeseníky



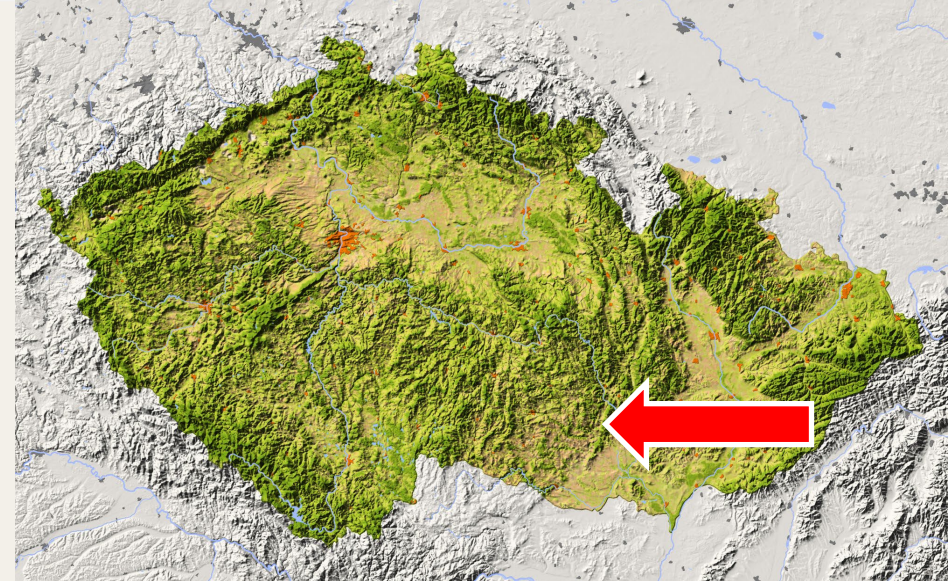
Kladensko



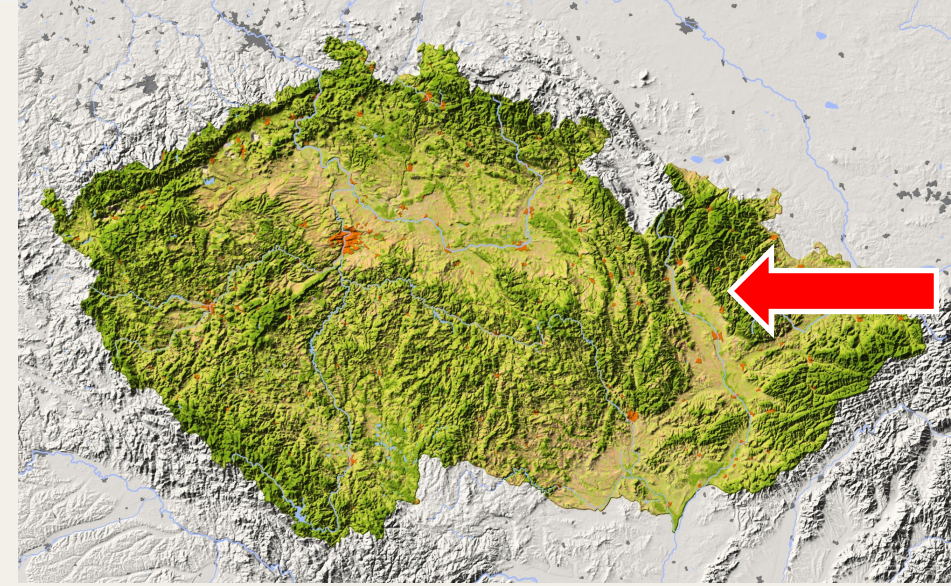
Ostravsko



Rosicko-Oslavansko



Krajina břidlice





POVRCHOVÁ TĚŽBA

Český kras

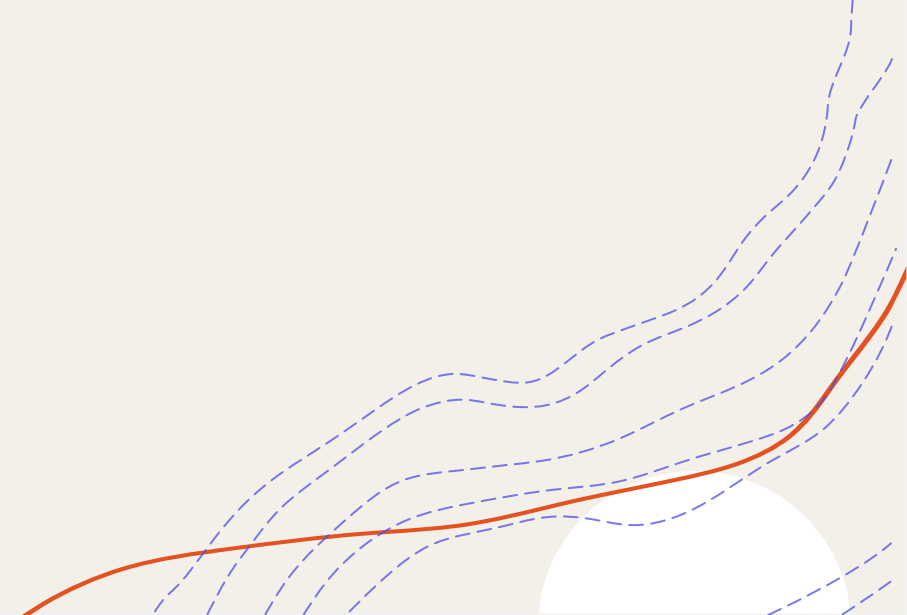


Podkrušnohoří

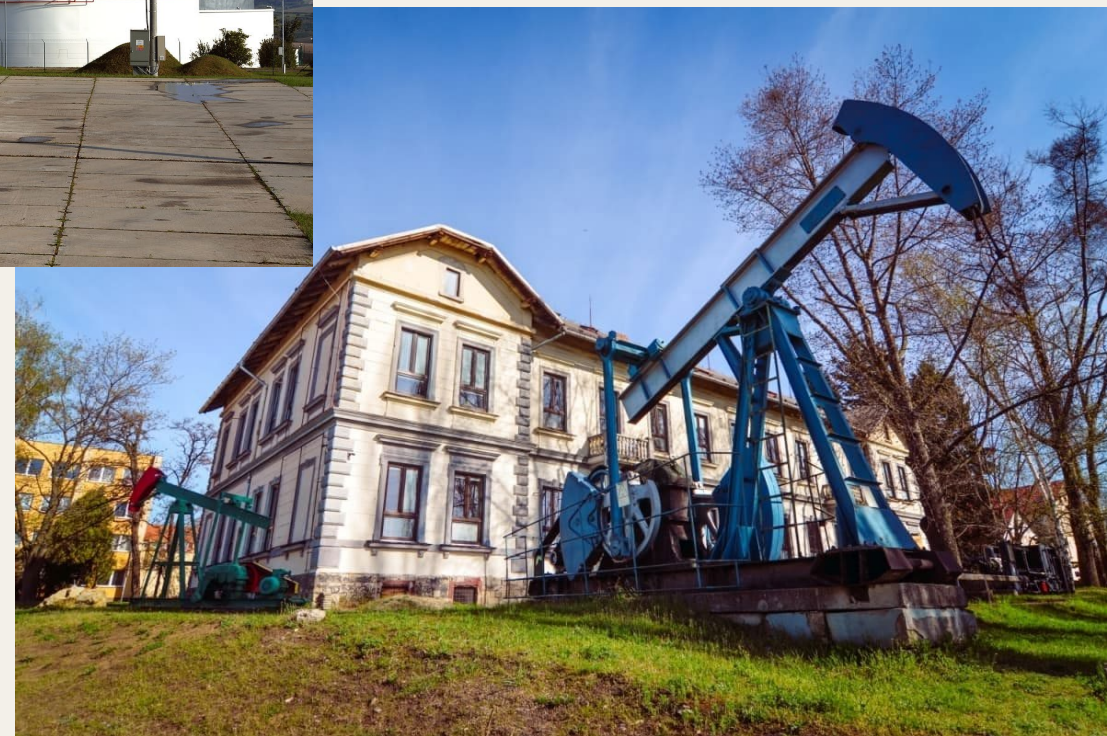
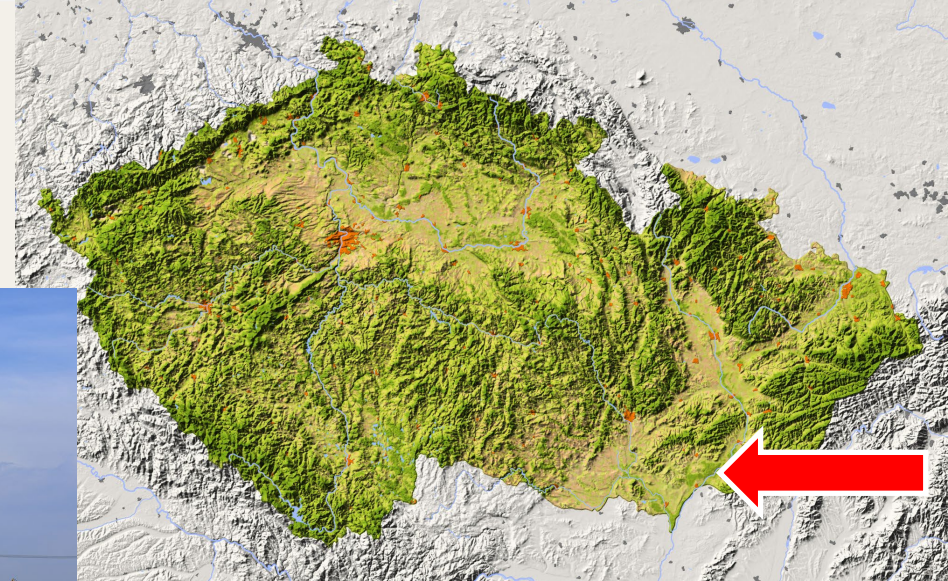




OSTATNÍ



Hodonínsko



Úprava surovin

