

See discussions, stats, and author profiles for this publication at: <https://www.researchgate.net/publication/283490690>

Junqueira's Basic Histology Text & Atlas (14th ed.)

Book · January 2016

CITATIONS

436

READS

619,601

1 author:



[Anthony L. Mescher](#)

Indiana University Bloomington

94 PUBLICATIONS 4,047 CITATIONS

SEE PROFILE

Some of the authors of this publication are also working on these related projects:



Revision and expansion of the 15th edition, Junqueira's Basic Histology: Text and Atlas [View project](#)



Tissue regeneration [View project](#)



JUNQUEIRA'S Basic Histology Text and Atlas

Fourteenth Edition



Anthony Mescher

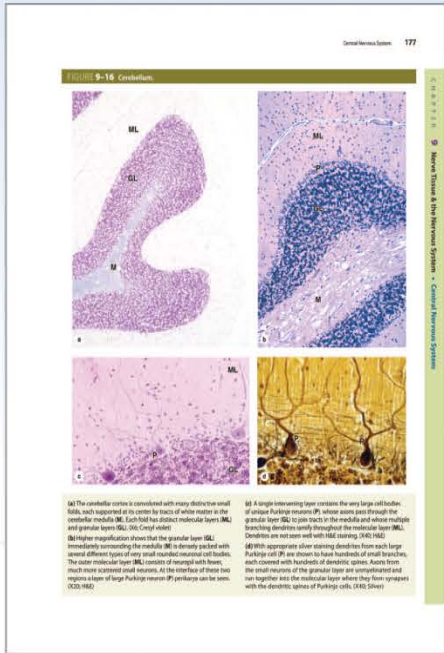
Mc
Graw
Hill
Education

LANGE[®]

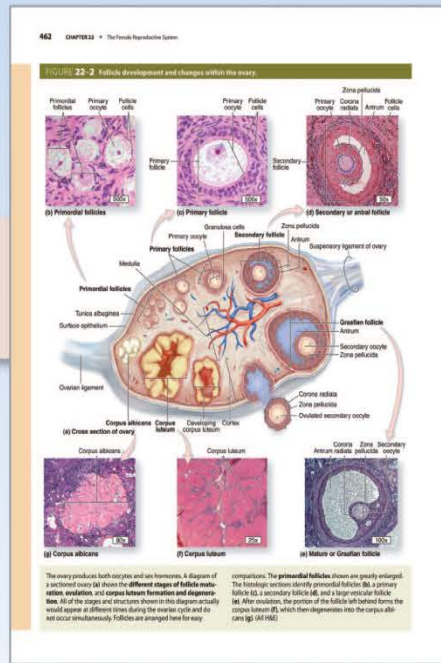
DVD
INCLUDED



Student-suggested detailed legends



Medical Applications are incorporated into every chapter



3.3 MEDICAL APPLICATION

Problems of the vestibular system can result in vertigo, or dizziness, a sense of bodily rotation and lack of equilibrium. Spinning the body produces **vertigo** due to overstimulation of the crista ampullaris of the semicircular ducts. Overstimulation of the maculae of the utricle caused by motion changes in linear acceleration and directional changes can normally lead to **motion sickness** (seasickness).

Sensory impulses from the maculae of the vestibular complex move toward the CNS via branches of the eighth cranial nerve and are interpreted along with input from the semicircular ducts and other sources to help maintain equilibrium.

3.3 MEDICAL APPLICATION

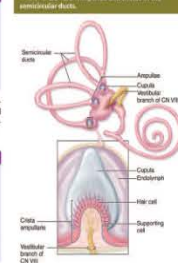
The sensation of **vertigo** associated with rapid movements can also be produced by internal ear inflammation (**vestibular neuritis**) or neurologic conditions that cause dysfunction of the vestibular system. **Meniere disease** involves episodes of vertigo accompanied by hearing loss and ringing in the ear (**tinnitus**) and is caused when increased pressure within the vestibular labyrinth (**endolymphatic hydrops**) leads to rupture and leakage of endolymph into the perilymph.

Semicircular Ducts

The three semicircular ducts extend from and return to the wall of the utricle. They lie in three different spatial planes, at approximately right angles to one another (Figure 23-24). Each semicircular duct has one enlarged ampulla and contains hair cells and supporting cells on a crest of the wall called the **crista ampullaris** (Figure 23-28). Each crista ampullaris is perpendicular to the long axis of the duct. Cristae are histologically similar to maculae, but the primary cilia layer called the **cupula** attached to the hair cells apically lacks otoliths and is thicker. The cupula extends completely across the ampulla, containing the supportive sensory wall (Figure 23-28).

The hair cells of the crista ampullaris act as mechanoelectrical transducers like those of the maculae in the utricle and saccule, signaling afferent axons by pulsed transmitter release determined by depolarization and hyperpolarization states (Figure 23-27). Here the mechanoreceptors detect rotational movements of the head as they are deflected by endolymph movement in the semicircular ducts. The cells are oriented with opposite polarity on each side of the duct, so that bending the head causes hair cell depolarization on one side and hyperpolarization on the other. Neurons of the vestibular nuclei in the CNS receive input from the sets of semicircular ducts on each side simultaneously and interpret head rotation on the basis of the relative transmitter discharge rates of the two sides.

FIGURE 23-28 Ampulla and crista of the semicircular duct.



Each of the semicircular ducts has an expanded end called the **ampulla**. The wall of each ampulla is lined by a ridge called the **crista ampullaris**, a section of which is shown here diagrammatically. Hair cells of the crista ampullaris resemble the two regions found in the maculae, with hair bundles projecting into a dome-shaped covering layer of protoplasm called the **cupula**. The cupula is attached to the wall opposite the crista and is moved by endolymph movement within the semicircular duct.

Inputs from the semicircular ducts travel together with those from the utricle and saccule along the eighth cranial nerve to vestibular nuclei in the CNS. There they are interpreted together with inputs from mechanoreceptors of the musculospinal system to provide the basis for preventing movement and orientation in space and for maintaining equilibrium or balance.

3.3 MEDICAL APPLICATION

Small groups of vertigo produced by subtle changes in position of head, such as standing up quickly or sitting up after lying in bed, may be examples of **benign paroxysmal positional vertigo (BPPV)**. BPPV can result when one or more of the otoliths (or otoliths) detach from the otolith membrane and move into an ampulla of the posterior semicircular duct as **canaliths** that may also adhere



FOURTEENTH EDITION

Junqueira's

Basic Histology

TEXT AND ATLAS

Anthony L. Mescher, PhD

Professor of Anatomy and Cell Biology
Indiana University School of Medicine
Bloomington, Indiana



New York Chicago San Francisco Athens London Madrid Mexico City
Milan New Delhi Singapore Sydney Toronto

Junqueira's Basic Histology, Fourteenth Edition

Copyright © 2016 by The McGraw-Hill Companies, Inc. All rights reserved. Printed in China. Except as permitted under the United States copyright Act of 1976, no part of this publication may be reproduced or distributed in any form or by any means, or stored in a data base or retrieval system, without the prior written permission of the publisher.

1 2 3 4 5 6 7 8 9 0 CTP/CTP 18 17 16 15 14 13

Set ISBN 978-0-07-178033-9; Set MHID 0-07-178033-5
Book ISBN 978-0-07-184270-9; Book MHID 0-07-184270-3
CD ISBN 978-0-07-180797-5; CD MHID 0-07-180797-7
ISSN 0891-2106

Notice

Medicine is an ever-changing science. As new research and clinical experience broaden our knowledge, changes in treatment and drug therapy are required. The author and the publisher of this work have checked with sources believed to be reliable in their efforts to provide information that is complete and generally in accord with the standards accepted at the time of publication. However, in view of the possibility of human error or changes in medical sciences, neither the author nor the publisher nor any other party who has been involved in the preparation or publication of this work warrants that the information contained herein is in every respect accurate or complete, and they disclaim all responsibility for any errors or omissions or for the results obtained from use of the information contained in this work. Readers are encouraged to confirm the information contained herein with other sources. For example and in particular, readers are advised to check the product information sheet included in the package of each drug they plan to administer to be certain that the information contained in this work is accurate and that changes have not been made in the recommended dose or in the contraindications for administration. This recommendation is of particular importance in connection with new or infrequently used drugs.

This book was set in Minion Pro by Cenveo® Publisher Services.
The editors were Michael Weitz and Brian Kearns.
The production supervisor was Catherine H. Saggese.
Project management was provided by Sonam Arora, Cenveo Publisher Services.
The illustration manager was Armen Ovsepyan.
The artwork was done by Electronic Publishing Services, Inc.
The book designer was Elise Lansdon.
The cover design was by Perhsson Design.
China Translation & Printing Services, Ltd. was the printer and binder.

This book is printed on acid-free paper.

The Figure Credit section for this book begins on page 515 and is considered an extension of the copyright page.

<CIP data to come>

McGraw-Hill books are available at special quantity discounts to use as premiums and sales promotions, or for use in corporate training programs. To contact a representative please e-mail us at bulksales@mcgraw-hill.com.

Preface

With this 14th edition *Junqueira's Basic Histology* continues as the preeminent source of **concise yet thorough** information on human tissue structure and function. For nearly forty-five years this educational resource has met the needs of learners for a well-organized and concise presentation of **cell biology and histology** that integrates the material with that of **biochemistry, immunology, endocrinology, and physiology** and provides an excellent foundation for subsequent studies in **pathology**. The text is prepared specifically for students of medicine and other health-related professions, as well as for advanced undergraduate courses in tissue biology. As a result of its value and appeal to students and instructors alike, *Junqueira's Basic Histology* has been translated into a dozen different languages and is used by medical students throughout the world.

A major change in this edition is the inclusion of **Self-Assessment Questions** with each topic/chapter. Many of these questions were used in my courses, but others are taken or modified from a few of the many excellent review books published by McGraw-Hill/Lange for students preparing to take the U.S. Medical Licensing Examination. These include *Histology and Cell Biology: Examination and Board Review*, by Douglas Paulsen; *USMLE Road Map: Histology*, by Harold Sheedlo; and *Anatomy, Histology, & Cell Biology: PreTest Self-Assessment & Review*, by Robert Klein and George Enders. The use here of questions from these valuable resources is gratefully acknowledged. Students are referred to those review books for hundreds of additional self-assessment questions. As with the last edition, each chapter also includes a **Summary of Key Points** designed to guide the students concerning what is clearly important and what is less so. **Summary Tables** in each chapter organize and condense important information, further facilitating efficient learning.

Each chapter has been revised and shortened, while coverage of specific topics has been expanded as needed. Study is facilitated by modern page design. Inserted throughout each chapter are more numerous, short paragraphs that indicate how the information presented can be used medically and which emphasize the foundational relevance of the material learned.

The **art** and other figures are present in every chapter, with the goal to simplify learning and integration with related material. The McGraw-Hill medical illustrations now used throughout the text, supplemented by numerous animations in the electronic version of the text, are the most useful, thorough, and attractive of any similar medical textbook. Electron and light micrographs have been replaced throughout the book as needed, and again make up a **complete atlas of cell, tissue, and organ structures** fully compatible with the students' own collection of glass or digital slides. A **virtual microscope** with over 150 slides of all human tissues and organs is available: <http://medsci.indiana.edu/junqueira/virtual/junqueira.htm>.

As with the previous edition the book facilitates learning by its **organization**:

- An opening chapter reviews the **histological techniques** that allow understanding of cell and tissue structure.
- Two chapters then summarize the structural and functional organization of **human cell biology**, presenting the cytoplasm and nucleus separately.
- The next seven chapters cover the **four basic tissues** that make up our organs: epithelia, connective tissue (and its major sub-types), nervous tissue, and muscle.

- Remaining chapters explain the organization and functional significance of these tissues in **each of the body's organ systems**, closing with up-to-date consideration of cells in the eye and ear.

For additional review of what's been learned or to assist rapid assimilation of the material in *Junqueira's Basic Histology*, McGraw-Hill has published a set of 200 full-color ***Basic Histology Flash Cards***, Anthony Mescher author. Each card includes images of key structures to identify, a summary of important facts about those structures, and a clinical comment. This valuable learning aid is available as a set of actual cards from Amazon.com, or as an app for smart phones or tablets from the on-line App Store.

With its proven strengths and the addition of new features, I am confident that *Junqueira's Basic Histology* will continue as one of the most valuable and most widely read educational resources in histology. Users are invited to provide feedback to the author with regard to any aspect of the book's features.

Anthony L. Mescher
Indiana University School of Medicine
mescher@indiana.edu

Contents

KEY FEATURES VI | PREFACE IX | ACKNOWLEDGMENTS XI

1 Histology & Its Methods of Study 1

Preparation of Tissues for Study 1
Light Microscopy 4
Electron Microscopy 8
Autoradiography 9
Cell & Tissue Culture 10
Enzyme Histochemistry 10
Visualizing Specific Molecules 10
Interpretation of Structures in Tissue Sections 14
Summary of Key Points 15
Assess Your Knowledge 16

2 The Cytoplasm 17

Cell Differentiation 17
The Plasma Membrane 17
Cytoplasmic Organelles 27
The Cytoskeleton 42
Inclusions 47
Summary of Key Points 51
Assess Your Knowledge 52

3 The Nucleus 53

Components of the Nucleus 53
The Cell Cycle 58
Mitosis 61
Stem Cells & Tissue Renewal 65
Meiosis 65
Apoptosis 67
Summary of Key Points 69
Assess Your Knowledge 70

4 Epithelial Tissue 71

Characteristic Features of Epithelial Cells 71
Specializations of the Apical Cell Surface 77
Types of Epithelia 80
Transport Across Epithelia 88
Renewal of Epithelial Cells 88
Summary of Key Points 90
Assess Your Knowledge 93

5 Connective Tissue 96

Cells of Connective Tissue 96
Fibers 103
Ground Substance 111
Types of Connective Tissue 114
Summary of Key Points 119
Assess Your Knowledge 120

6 Adipose Tissue 122

White Adipose Tissue 122
Brown Adipose Tissue 126
Summary of Key Points 127
Assess Your Knowledge 128

7 Cartilage 129

Hyaline Cartilage 129
Elastic Cartilage 133
Fibrocartilage 134
Cartilage Formation, Growth, & Repair 134
Summary of Key Points 136
Assess Your Knowledge 137

8 Bone 138

Bone Cells 138
Bone Matrix 143
Periosteum & Endosteum 143
Types of Bone 143
Osteogenesis 148
Bone Remodeling & Repair 152
Metabolic Role of Bone 153
Joints 155
Summary of Key Points 158
Assess Your Knowledge 159

9 Nerve Tissue & the Nervous System 161

Development of Nerve Tissue 161
Neurons 163
Glial Cells & Neuronal Activity 168
Central Nervous System 175
Peripheral Nervous System 182

Neural Plasticity & Regeneration 187
 Summary of Key Points 190
 Assess Your Knowledge 191

10 Muscle Tissue 193

Skeletal Muscle 193
 Cardiac Muscle 207
 Smooth Muscle 208
 Regeneration of Muscle Tissue 213
 Summary of Key Points 213
 Assess Your Knowledge 214

11 The Circulatory System 215

Heart 215
 Tissues of the Vascular Wall 219
 Vasculature 220
 Lymphatic Vascular System 231
 Summary of Key Points 235
 Assess Your Knowledge 235

12 Blood 237

Composition of Plasma 237
 Blood Cells 239
 Summary of Key Points 250
 Assess Your Knowledge 252

13 Hemopoiesis 254

Stem Cells, Growth Factors, & Differentiation 254
 Bone Marrow 255
 Maturation of Erythrocytes 258
 Maturation of Granulocytes 260
 Maturation of Agranulocytes 263
 Origin of Platelets 263
 Summary of Key Points 265
 Assess Your Knowledge 265

14 The Immune System & Lymphoid Organs 267

Innate & Adaptive Immunity 267
 Cytokines 269
 Antigens & Antibodies 270
 Antigen Presentation 271
 Cells of Adaptive Immunity 273
 Thymus 276
 Mucosa-Associated Lymphoid Tissue 281
 Lymph Nodes 282
 Spleen 286
 Summary of Key Points 293
 Assess Your Knowledge 294

15 Digestive Tract 295

General Structure of the Digestive Tract 295
 Oral Cavity 298
 Esophagus 305
 Stomach 307
 Small Intestine 314
 Large Intestine 318
 Summary of Key Points 326
 Assess Your Knowledge 328

16 Organs Associated with the Digestive Tract 329

Salivary Glands 329
 Pancreas 332
 Liver 335
 Biliary Tract & Gallbladder 345
 Summary of key points 346
 Assess Your Knowledge 348

17 The Respiratory System 349

Nasal Cavities 349
 Pharynx 352
 Larynx 352
 Trachea 354
 Bronchial Tree & Lung 354
 Lung Vasculature & Nerves 366
 Pleural Membranes 368
 Respiratory Movements 368
 Summary of Key Points 369
 Assess Your Knowledge 369

18 Skin 371

Epidermis 372
 Dermis 378
 Subcutaneous Tissue 381
 Sensory Receptors 381
 Hair 383
 Nails 384
 Skin Glands 385
 Skin Repair 388
 Summary of Key Points 391
 Assess Your Knowledge 391

19 The Urinary System 393

Kidneys 393
 Blood Circulation 394
 Renal Function: Filtration, Secretion, & Reabsorption 395
 Ureters, Bladder, & Urethra 406

Summary of Key Points 411
Assess Your Knowledge 412

20 Endocrine Glands 413

Pituitary Gland (Hypophysis) 413
Adrenal Glands 423
Pancreatic Islets 427
Diffuse Neuroendocrine System 429
Thyroid Gland 429
Parathyroid Glands 432
Pineal Gland 434
Summary of Key Points 437
Assess Your Knowledge 437

21 The Male Reproductive System 439

Testes 439
Intratesticular Ducts 449
Excretory Genital Ducts 450
Accessory Glands 451
Penis 456
Summary of Key Points 457
Assess Your Knowledge 459

22 The Female Reproductive System 461

Ovaries 461
Uterine Tubes 471
Major Events of Fertilization 472
Uterus 472
Embryonic Implantation, Decidua, & the Placenta 479
Cervix 483
Vagina 484
External Genitalia 484
Mammary Glands 484
Summary of Key Points 489
Assess Your Knowledge 490

23 The Eye & Ear: Special Sense Organs 491

Eyes: The Photoreceptor System 491
Ears: The Vestibuloauditory System 510
Summary of Key Points 523
Assess Your Knowledge 523

INDEX 525

The Nucleus ASSESS YOUR KNOWLEDGE

- Which of the following facilitates breakdown of the nuclear envelope during the onset of mitosis?
 - Disassembly of nucleosomes in the associated constitutive heterochromatin
 - Increased export of material by the nuclear pore complexes into the perinuclear space
 - Phosphorylation of lamin subunits by a cyclin-dependent kinase (CDK)
 - Activities triggered at a restriction point late in G_1
 - The activity of proteasomes
- Binding of histone H1 proteins to importins is important for which of the following?
 - Transport through the nuclear pores complexes
 - Properly directed vesicular transport through the Golgi apparatus
 - Transport from the granular part of the nucleolus
 - Further binding to the "linker DNA" and proper assembly of nucleosomes
 - Phosphorylation of cyclins
- Which of the following is a region of chromatin that is well developed in large neurons active in protein synthesis?
 - Heterochromatin
 - The nucleolus
 - The Nissl substance (neuronal RER)
 - The Barr body
 - The nucleosome
- Which of the following is found during meiosis but not mitosis?
 - Chromatids
 - Polar microtubules
 - Metaphase
 - Synapsis
 - Cytokinesis
- Transitions in the cell cycle from one phase to the next are regulated by protein kinases whose activity depends on what other proteins?
 - Tumor suppressors
 - Cyclins
 - Actins
 - Lamins
 - Importins
- Mitotic figures visible in a tissue section from the lining of the small intestine are most likely to belong to which of the following categories?
 - Terminally differentiated cells
 - Partially differentiated cells
 - Blood cells
 - Stem cells
 - Progenitor cells
- Key differences between apoptotic and necrotic cell death include which of the following?
 - Apoptotic cells do not release factors that induce inflammation.
 - Necrosis does not trigger inflammation.
 - Apoptosis does not utilize intracellular proteases.
 - Apoptosis usually follows lethal physical damage to a cell.
 - Necrosis is involved in formation of some organs during embryonic development.
- A 29-year-old woman presents with a 101°F fever, pericardial effusions and Libman-Sachs endocarditis, arthralgia, and facial rash across the malar region ("butterfly rash") that is accentuated by sun exposure. Laboratory tests show creatine 1.7 mg/dL (normal 0.5-1.1 mg/dL), high titers of antinuclear autoantibodies (ANA), Smith antigen, and antinucleosome antibodies in the blood. Which one of the following is most likely to be directly affected by the disruption of nucleosomes in this patient?
 - Packaging of genetic material in a condensed form
 - Transcribing DNA
 - Forming pores for bidirectional nuclear-cytoplasmic transport
 - Forming the nuclear lamina
 - Holding together adjacent chromatids
- A 32-year-old man and his 30-year-old wife are referred for a reproductive endocrinologist infertility (REI) consult after 2 years of "trying to get pregnant." He is diagnosed with oligozoospermia. Ejaculated mature sperm are collected and undergo genetic analysis. Using gene linkage analysis, his REI specialist determines that he has aberrations in spermatogenic meiotic recombination, including both diminished frequency and suboptimal location, resulting in high frequency of aneuploid sperm. In explaining the diagnosis, she explains meiosis and recombination attributing the problem to a specific phase of the meiosis. Which part of meiosis is most closely associated with recombination?
 - Metaphase I
 - Anaphase I/Telophase I
 - Prophase I
 - Prophase II
 - Anaphase II/Telophase II
- A newborn boy is diagnosed with Apert syndrome. He has craniosynostosis, hypoplasia of the middle part of the face with retrusion of the eyes, and syndactyly that includes fusion of the skin, connective tissue, and muscle of the first, middle, and ring fingers with moderate fusion of those digits. There is very limited joint mobility past the first joint. Which one of the following is most likely *decreased* in cells of the interdigital regions of the developing hand of this newborn child?
 - Random DNA degradation
 - Inflammation
 - Cell swelling
 - Bcl-2
 - DNA degradation by endonucleases

4

Epithelial Tissue

CHARACTERISTIC FEATURES OF EPITHELIAL CELLS

Basement Membranes	71
Intercellular Adhesion & Other Junctions	72

SPECIALIZATIONS OF THE APICAL CELL SURFACE

Microvilli	73
Stereocilia	77
Cilia	79

TYPES OF EPITHELIA

Covering or Lining Epithelia	80
Secretory Epithelia & Glands	84

TRANSPORT ACROSS EPITHELIA**RENEWAL OF EPITHELIAL CELLS****SUMMARY OF KEY POINTS****ASSESS YOUR KNOWLEDGE**

80
84
88
88
90
93

Despite its complexity, the organs of the human body are composed of only **four basic tissue types**: epithelial, connective, muscular, and nervous tissues. Each tissue is an assemblage of similarly specialized cells united in performing a specific function. The basic tissues, each containing extracellular matrix (ECM) as well as cells, associate with one another in the variable proportions and morphologies characteristic of each organ. The main features of the basic tissue types are summarized in Table 4–1.

Connective tissue is characterized by cells producing very abundant ECM; muscle tissue is composed of elongated cells specialized for contraction and movement; and nervous tissue is composed of cells with long, fine processes specialized to receive, generate, and transmit nerve impulses. Most organs can be divided into the **parenchyma**, which is composed of the cells responsible for the organ's specialized functions, and the **stroma**, the cells of which have a supporting role in

the organ. Except in the brain and spinal cord, the stroma is always connective tissue.

Epithelial tissues are composed of closely aggregated polyhedral cells adhering strongly to one another and to a thin layer of ECM, forming cellular sheets that line the cavities of organs and cover the body surface. Epithelia (Gr. *epi*, upon + *thele*, nipple) line all external and internal surfaces of the body and all substances that enter or leave an organ must cross this type of tissue.

The principal functions of epithelial tissues include the following:

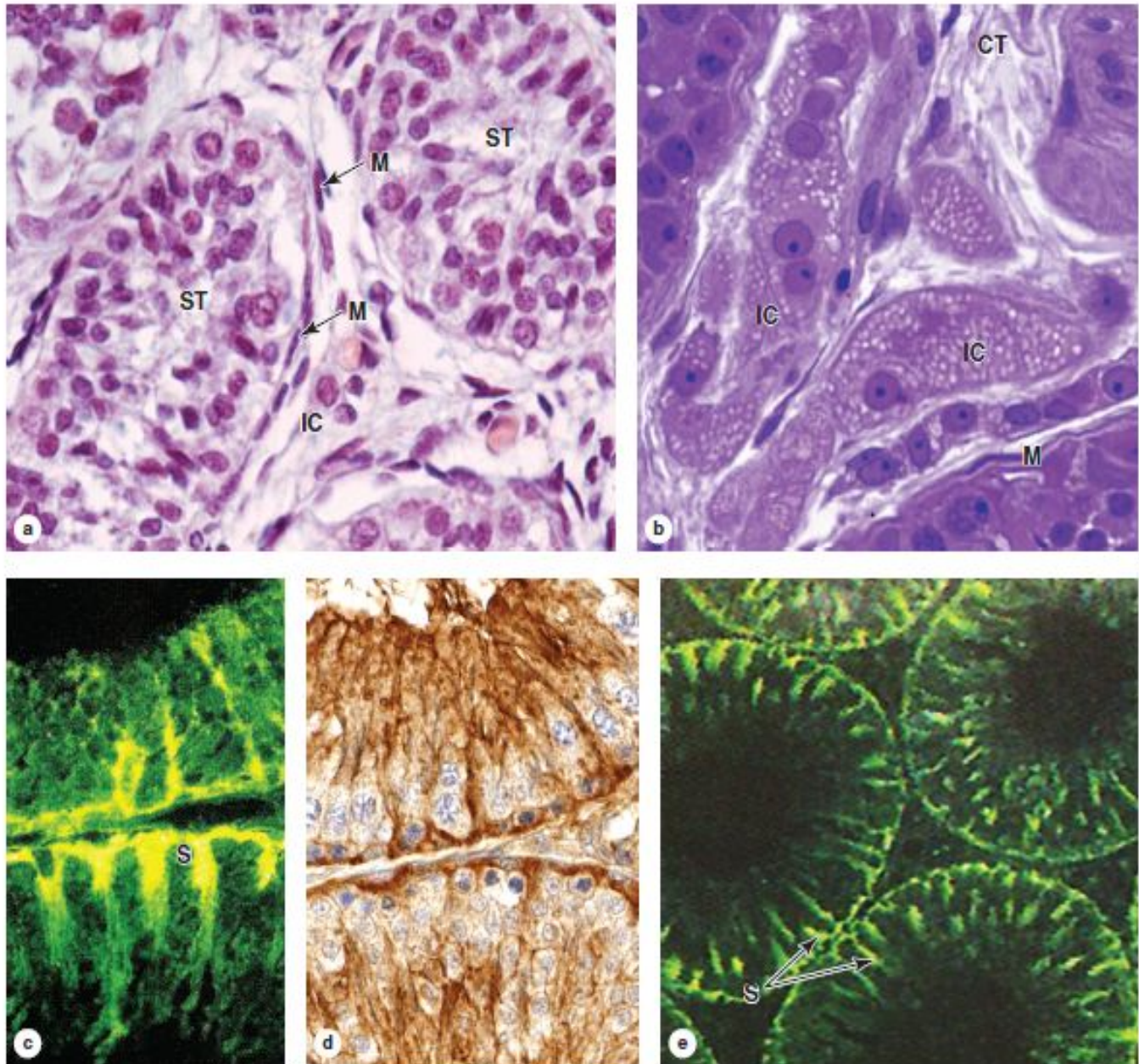
- Covering, lining, and protecting surfaces (eg, epidermis)
- Absorption (eg, the intestinal lining)
- Secretion (eg, parenchymal cells of glands)

Specific cells of certain epithelia may be contractile (myoepithelial cells) or specialized sensory cells, such as those of taste buds or the olfactory epithelium.

TABLE 4–1 Main characteristics of the four basic types of tissues.

Tissue	Cells	Extracellular Matrix	Main Functions
Epithelial	Aggregated polyhedral cells	Small amount	Lining of surface or body cavities; glandular secretion
Connective	Several types of fixed and wandering cells	Abundant amount	Support and protection of tissues/organs
Muscle	Elongated contractile cells	Moderate amount	Strong contraction; body movements
Nervous	Elongated cells with extremely fine processes	Very small amount	Transmission of nerve impulses

FIGURE 21–4 Interstitial cells and Sertoli cells.



(a) Seminiferous tubules (ST) are surrounded by stroma containing many interstitial cells (IC), typically located near capillaries, which secrete androgens. The seminiferous tubule wall consists of a unique germinal epithelium composed of columnar Sertoli cells and dividing spermatogenic stem cells. Seen around the seminiferous tubules are myoid cells (M) with elongated nuclei, the contractions of which help move fluid and mature sperm in the tubules. (X400; H&E)

(b) A plastic section shows lipid droplets filling the cytoplasm of the clumped interstitial cells (IC), or Leydig cells, in the connective tissue (CT) between tubules. Such cytoplasm is typical of steroid-secreting endocrine cells and here indicates cells actively secreting testosterone. The epithelium of a nearby seminiferous tubule is immediately surrounded by myoid cells (M). (X400; PT)

(c) Immunohistochemistry of a seminiferous tubule wall with antibodies against prosaposin, a glycoprotein abundant in Sertoli cells. The yellow fluorescent stain indicates the tall columnar shape of Sertoli cells (S) and the dendritic nature of their apical ends. Sertoli

cells support all spermatogenic cells physically and metabolically, phagocytize debris, and have endocrine roles affecting spermatogenesis and fetal development of the male reproductive tract. (400X; Immunofluorescence)

(d) Immunohistochemistry of the seminiferous tubule with the same antibodies labeled with peroxidase shows the tall Sertoli cells in brown. This bright-field preparation also shows the close association of the Sertoli cells with the numerous spermatogenic cells, whose nuclei are stained with hematoxylin. (400X; Immunoperoxidase & hematoxylin)

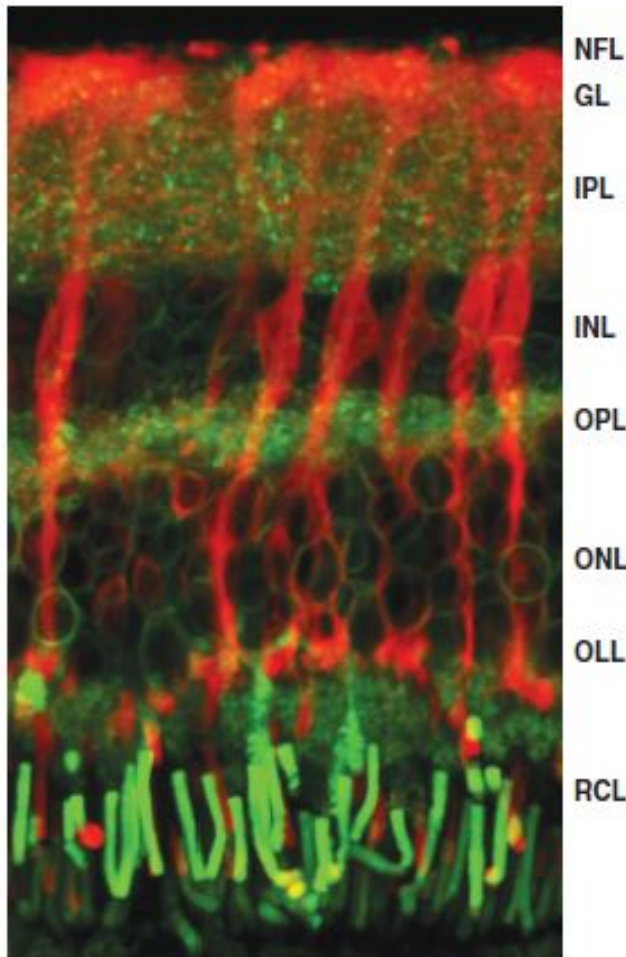
(e) Lower magnification of the same preparation as part c shows the distribution and density of Sertoli cells (S) in the seminiferous tubules. (200X; Immunofluorescence)

(Figure 21–4c–e used, with permission, of Dr Richard Sharpe and Chris McKinnell, University of Edinburgh, MRC Centre for Reproductive Health, UK.)

The Male Reproductive System ASSESS YOUR KNOWLEDGE

- Which of the following accurately describes spermiogenesis?
 - Occurs before puberty
 - Involves stem cells, meiosis, and spermatogenesis
 - Involves cytodifferentiation of early spermatids
 - Occurs in diploid cells
 - Results in the formation of primary spermatocytes
- A man with a pituitary gonadotrophic tumor causing hyposecretion of follicle-stimulating hormone (FSH) is most likely to exhibit which condition?
 - No symptoms, since he has no ovarian follicles
 - Loss of libido (sex drive)
 - Low serum testosterone levels
 - Low sperm count
 - Prostatic hypertrophy
- Interstitial cells of Leydig have an important function in male gamete production. Because of this function, which of the following organelles is abundant within these cells?
 - Lysosomes
 - Smooth endoplasmic reticulum
 - Peroxisomes
 - Polyribosomes
 - Golgi complexes
- While studying a germ cell line developed from a patient's testicular biopsy, the researcher notes that colchicine-treated cells blocked in metaphase have 46 chromosomes. From which of the following regions of the male genital tract would you expect these cells to have originated?
 - Within the rete testis
 - At the basal lamina of the seminiferous tubule
 - In the middle region of the germinal epithelium
 - Within the adluminal compartment of the seminiferous tubule
 - Within the straight tubules
- Which of the following organs is normally characterized by the accumulation of corpora amylacea with increasing age?
 - Prostate
 - Seminal vesicles
 - Bulbourethral (Cowper) glands
 - Epididymis
 - Ductus (vas) deferens
- Within the male reproductive tract, stereocilia project from cells lining which of the following regions?
 - Rete testis
 - Seminiferous tubules
 - Ampulla of the ductus deferens
 - Epididymis
 - Penile urethra
- As sperm pass through the male genital ducts, proteins and low molecular weight products are added from several sources producing semen. Which of the following provides a nutritive, fructose-rich secretion?
 - Interstitial cells of Leydig
 - Bulbourethral (Cowper) glands
 - Prostate gland
 - Epididymis
 - Seminal vesicles
- A 20-year-old man contracts cholera during a long tour of military duty in a remote, completely undeveloped region. After a 5-day period of severe diarrhea and treatment, he gradually recovers and slowly returns to work. He is married 3 years later but after a few years of trying to conceive a child, semen analysis reveals that his sperm are few in number and malformed, and blood tests show a high titer of antibodies against sperm antigens. The causative agent of cholera, *Vibrio cholera*, secretes a toxin that interferes with tight (occluding) junctions. What cells in the gonad are the likely target of this toxin in the male reproductive system?
 - Spermatogonia
 - Sertoli cells
 - Myoid cells
 - Interstitial cells of Leydig
 - Differentiating spermatozoa
- A 29-year-old man presents with testicular pain and a burning sensation during urination. Tests reveal the presence of *Neisseria gonorrhoea* and penicillin is prescribed. Gonorrhea often produces acute or chronic inflammation of the testes and frequently involves the channels that connect the testis to the epididymis. What is the name of these channels?
 - The mediastinum testis
 - The rete testis
 - Efferent ductules
 - The straight tubules (tubuli recti)
 - The seminiferous tubules
- A 39-year-old man undergoing an extensive series of tests for infertility is found to have a genetic mutation that prevents formation of a functional synaptonemal complex during meiosis, causing almost complete failure of sperm formation. Which cells would be directly affected by this mutation?
 - Primary spermatocytes
 - Spermatogonia
 - Secondary spermatocytes
 - Spermatids
 - Cells undergoing spermiogenesis

FIGURE 23–16 Müller cells.



Müller cells are large glial cells unique to the retina, which are critical for retinal function by providing trophic and metabolic support for adjacent neurons, regulating homeostasis and synaptic activity, and helping to organize retinal components structurally. The attenuated and diffuse nature of Müller cells makes these cells difficult to study microscopically in most routine preparations of retina. This confocal light microscope image of a section of living guinea pig retina, with its layers named as in the previous figure, shows the large Müller cells in red. Axons and dendrites, abundant in the plexiform layers, and the outer segments of the photoreceptor cells appear green.

Müller cells extend through the full thickness of the retina, with fine lateral processes contacting all adjacent neuronal cell bodies, synapses, and blood vessels. At a level just beyond the layer of photoreceptor cell nuclei, Müller cells are sealed to the photoreceptor cells by zonula adherens junctions, forming the outer limiting layer (OLL). A few long Müller cell processes extend beyond this layer, into the layer of rods and cones (RCL). The nerve fiber layer (NFL) is very thin in the area shown here and the pigmented epithelium is not stained. (X400; Vital dyes Mitotracker Orange [red] & FM-43 for synaptic membranes [green])

(With permission, from Dr. Andreas Reichenbach, Paul Flechsig Institute of Brain Research, University of Leipzig, Germany.)

the INL. A few scattered microglial cells occur throughout the neural retina.

Rod Cells

The human retina contains on average 92 million **rod cells**. They are extremely sensitive to light, responding to a single photon, and allow some vision even with light low levels, such as at dusk or nighttime. Rod cells are thin, elongated cells ($50 \mu\text{m} \times 3 \mu\text{m}$), composed of two functionally distinct segments (Figure 23–17a). The **outer segment** is a modified primary cilium, photosensitive and shaped like a short rod; the inner segment contains glycogen, mitochondria, and polyribosomes for the cell's biosynthetic activity.

The rod-shaped segment consists mainly of 600 to 1000 flattened **membranous discs** stacked like coins and surrounded by the plasma membrane (Figure 23–17). Proteins on the cytoplasmic surface of each disc include abundant **rhodopsin** (or **visual purple**) which is bleached by light and initiates the visual stimulus. Between this outer segment and the cell's inner segment is a constriction, the **connecting stalk**, which is part of the modified primary cilium arising from a basal body (Figure 23–17).

The membranous discs form by repetitive in-folding of the plasma membrane near the connecting stalk and insertion of rhodopsin and other proteins transported there from the inner segment. In rod cells the newly assembled discs detach from the plasma membrane and are displaced distally as new discs form. Eventually the discs arrive at the end of the rod, where they are shed, phagocytosed, and digested by the cells of the pigmented epithelium (Figure 23–13). Each day approximately 90 membranous discs are lost and replaced in each rod, with the process of assembly, distal movement, and apical shedding taking about 10 days.

Cone Cells

Less numerous and less light-sensitive than rods, the 4.6 million **cone cells** in the typical human retina produce color vision in adequately bright light. There are three morphologically similar classes of cones, each containing one type of the visual pigment **iodopsin** (or photopsins). Each of the three iodopsins has maximal sensitivity to light of a different wavelength, in the red, blue, or green regions of the visible spectrum, respectively. By mixing neural input produced by these visual pigments, cones produce a color image.

Like rods cone cells (Figure 23–17a) are elongated, with outer and inner segments, a modified cilium connecting stalk, and an accumulation of mitochondria and polyribosomes. The outer segments of cones differ from those of rods in their shorter, more conical form and in the structure of their stacked membranous discs, which in cones remain as continuous invaginations of the plasma membrane along one side (Figure 23–17a). Also, newly synthesized iodopsins and other membrane proteins are distributed uniformly throughout the cone outer segment and, although iodopsin turns over, discs in cones are shed much less frequently than in rods.

The Eye & Ear: Special Sense Organs SUMMARY OF KEY POINTS

Eye

- The eye has three tunics: the sclera and cornea form the outer fibrous tunic; the middle vascular layer (or uvea) consists of the choroid, ciliary body, and iris; and the retina forms the inner tunic.
- The transparent cornea consists of an anterior stratified squamous epithelium on Bowman membrane, a thick avascular stroma, and an inner endothelium on Descemet membrane.
- Aqueous humor is secreted by ciliary processes into the posterior chamber, flows through the pupil into the anterior chamber, and is drained by the scleral venous sinus in the limbus.
- The iris stroma contains melanocytes and posteriorly has smooth muscle fibers of the sphincter pupillae muscle and the myoepithelial cells forming the dilator pupillae muscle.
- The lens is a unique avascular tissue composed of long lens fibers, covered on its anterior side by cuboidal lens epithelium, and surrounded by a thick acellular layer called the lens capsule.
- The lens is suspended behind the iris and its central pupil by the ciliary zonule of fibrillin fibers produced by epithelial cells covering the encircling ciliary body.
- The retina has the two major parts derived from the embryonic optic cup: the pigmented epithelium next to the vascular choroid layer and the thicker neural retina.
- Cells of the pigmented epithelium absorb scattered light, form part of a blood-retina barrier, regenerate 11-*cis*-retinal, phagocytose shed discs from rods, and support the rod and cone cells.
- Rod cells are photoreceptors detecting light intensity with short rod-shaped outer segments; less numerous cone cells, with conical outer segments, are receptors for the primary colors (light of different wavelengths).
- Rods have stacked membrane discs in which the membranes are densely packed with the protein rhodopsin with bound retinal.
- Photons of light convert 11-*cis*-retinal to all-*trans*-retinal, causing rhodopsin to release the retinal (bleaching), and activate the adjacent G protein transducin, which causes a nerve impulse.
- In the neural retina the rod and cone layer (RCL) is nearest to the retina pigmented epithelium and near the outer nuclear layer (ONL) which contains the cell bodies of these photoreceptors.
- An outer plexiform layer (OPL) contains the photoreceptor's axons connected in synapses with dendrites of various integrating neurons whose cell bodies form the INL.
- Axons from cells in the INL form synapses in the inner plexiform layer (IPL) with neurons of ganglionic layer (GL), which send axons through the nerve fiber layer (NFL) to the optic nerve.
- Eyelids are lined by conjunctiva, a stratified columnar epithelium with goblet cells, which also covers the anterior part of the sclera and is continuous with the corneal epithelium.

- Lacrimal glands continuously produce the tear film that drains into the nasal cavity via the ducts of the lacrimal apparatus.

Ear

- The acoustic meatus of the external ear ends at the tympanic membrane and its mucosa contains sebaceous and ceruminous glands that produce an antimicrobial substance, cerumen.
- The tympanic cavity of the middle ear opens to the nasopharynx via the auditory (eustachian) tube.
- Within the tympanic cavity, an articulated series of three small bony ossicles (malleus, incus, and stapes) connects the tympanic membrane with the oval window in the wall of the internal ear.
- The internal ear consists of a membranous labyrinth containing endolymph; the membranous labyrinth is enclosed by the temporal bone's bony labyrinth which contains perilymph.
- The membranous labyrinth has a central vestibule with two subdivisions: the utricle connects to the three semicircular ducts and the saccule connects to the cochlear duct.
- The walls of the utricle and saccule each have a thickened area, the macula, which contains both sensory hair cells with synaptic connections to sensory nerves and supporting cells.
- A bundle of rigid stereocilia and one rigid kinocilium project apically from each hair cell and are surrounded by endolymph containing a gel-like matrix with mineralized crystals called otoliths.
- Head movements cause endolymph and the otolithic membrane to move, deforming the rigid apical structures of the hair cells, depolarizing them and producing nerve impulses.
- Each of the semicircular ducts, oriented 90 degrees from one another, has a terminal ampulla region with a thickened crista ampullaris containing hair cells that contact a gel-like cupola.
- Head movements displace endolymph and stereocilia of hair cells in the utricle, saccule, and semicircular ducts which together produce signals that contribute to the sense of equilibrium.
- The cochlear duct is the middle compartment (*scala media*) of the cochlea and runs between two other long compartments that contain perilymph: the *scala vestibuli* and the *scala tympani*.
- Along the base of the cochlear duct, the basilar membrane supports the spiral organ of Corti, which consists largely of hair cells connected to sensory fibers of cranial nerve VIII.
- The cochlear hair cells include three to five rows of outer hair cells with stereocilia embedded in a gel-like tectorial membrane and one row of more heavily innervated inner hair cells.
- Sound waves transmitted by the ossicles move the oval window and produce pressure waves in the cochlear perilymph which deflect the basilar membrane and organ of Corti, causing nerve impulses which the brain interprets as sounds.

The Eye & Ear: Special Sense Organs ASSESS YOUR KNOWLEDGE

1. Which of the following is the thickest component of the cornea?
 - a. Corneal epithelium
 - b. Stroma
 - c. Descemet membrane
 - d. Bowman membrane
 - e. Corneal endothelium
2. Which description is accurate for lens fibers?
 - a. Are terminally differentiated fibroblasts
 - b. Consist of specialized type I collagen
 - c. Derived from epithelial cells that produce proteins called crystallins
 - d. Consist of type III collagen
 - e. Have the same embryonic origin as the neural retina
3. Which structure is the most anterior extension of the eye's vascular layer?
 - a. Ciliary body
 - b. Cornea
 - c. Lens
 - d. Iris
 - e. Zonule
4. Which cells transmit visual signals from the retina to the brain?
 - a. Bipolar cells
 - b. Amacrine cells
 - c. Ganglion cells
 - d. Horizontal cells
 - e. Müller cells