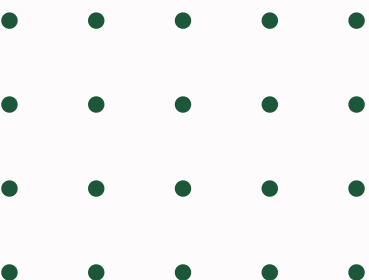




ROSTLINNÉ EXPLANTÁTY

Hana Cempírková

Úvod do EBR 2024



Sylabus

01

Definice pojmů

02

Podmínky *in vitro* kultur

03

Složení médií, fytohormony

04

Mikropropagace

05

Kalus

06

Sekundární metabolity

07

Embrya - zygotická a somatická

08

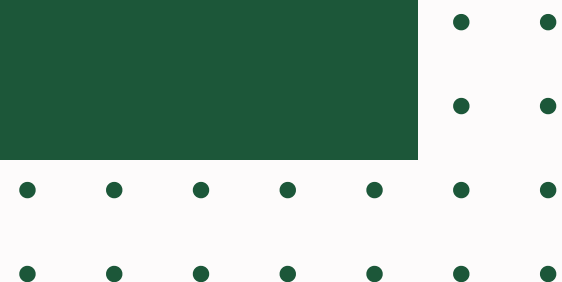
Haploidní rostliny

09

Transgenoze

10

Kryoprezervace

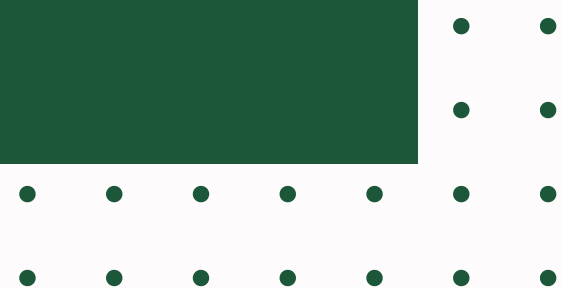
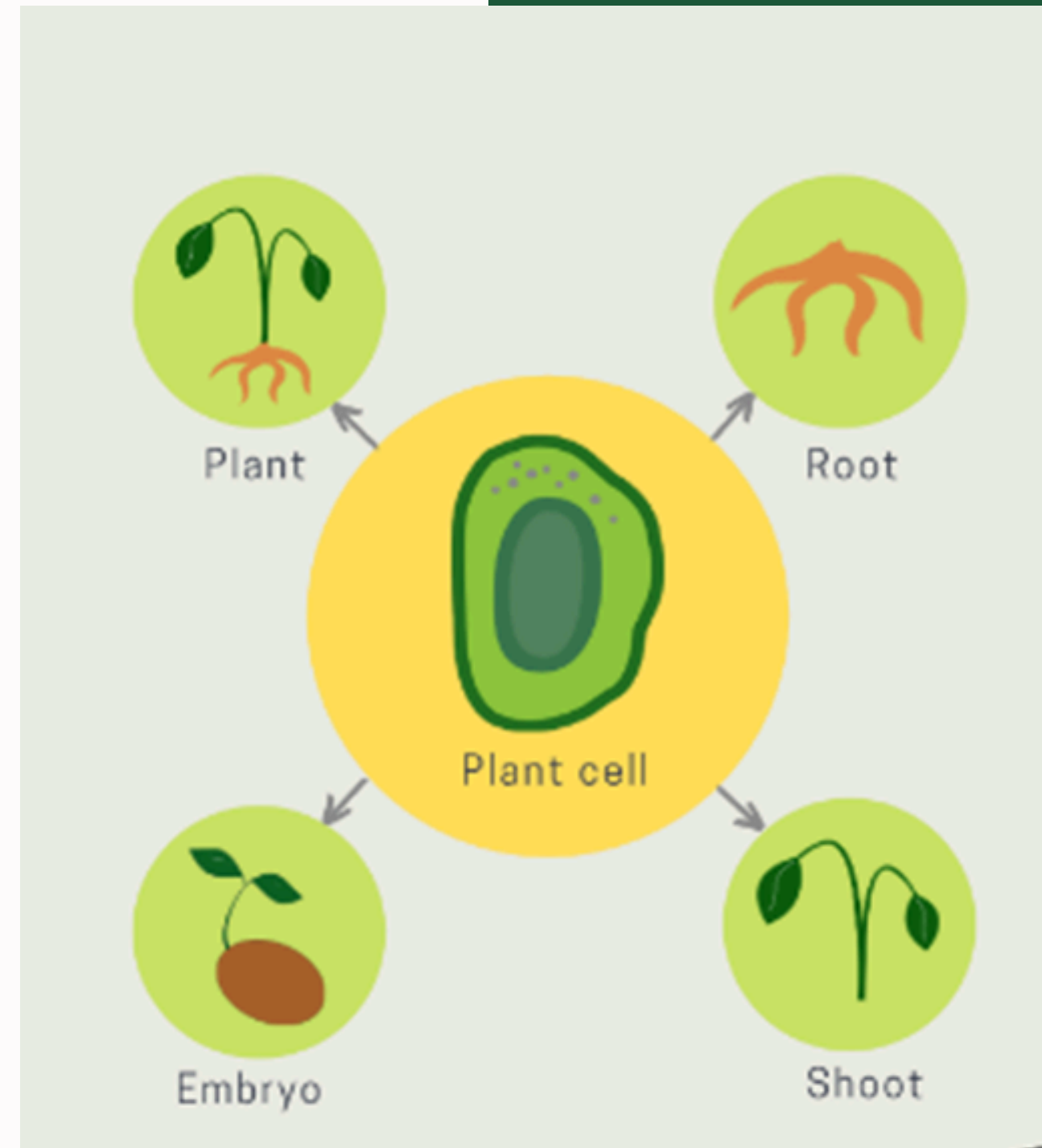


Definice pojmů

Tkáňové kultury
in vitro
Rostlinné explantáty

Aseptická kultura
Axenická kultura

Totipotence a pluripotence



Podmínky *in vitro* kultur

- Sterilizace a desinfekce
- Fyzikální podmínky kultivace

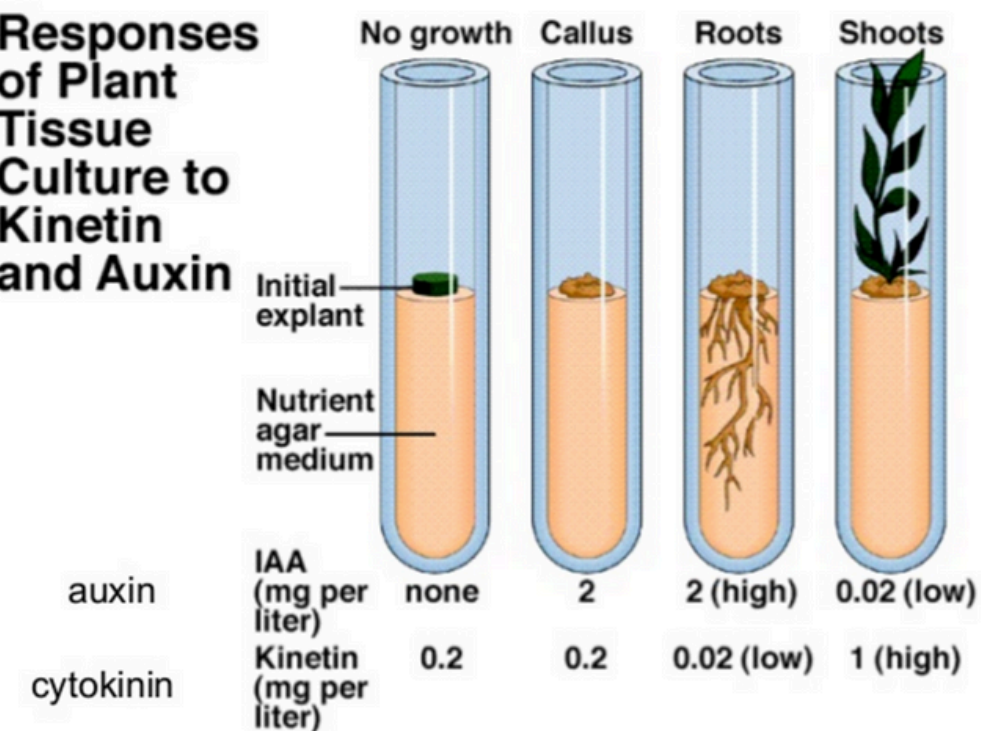


Složení médií, fytohormony

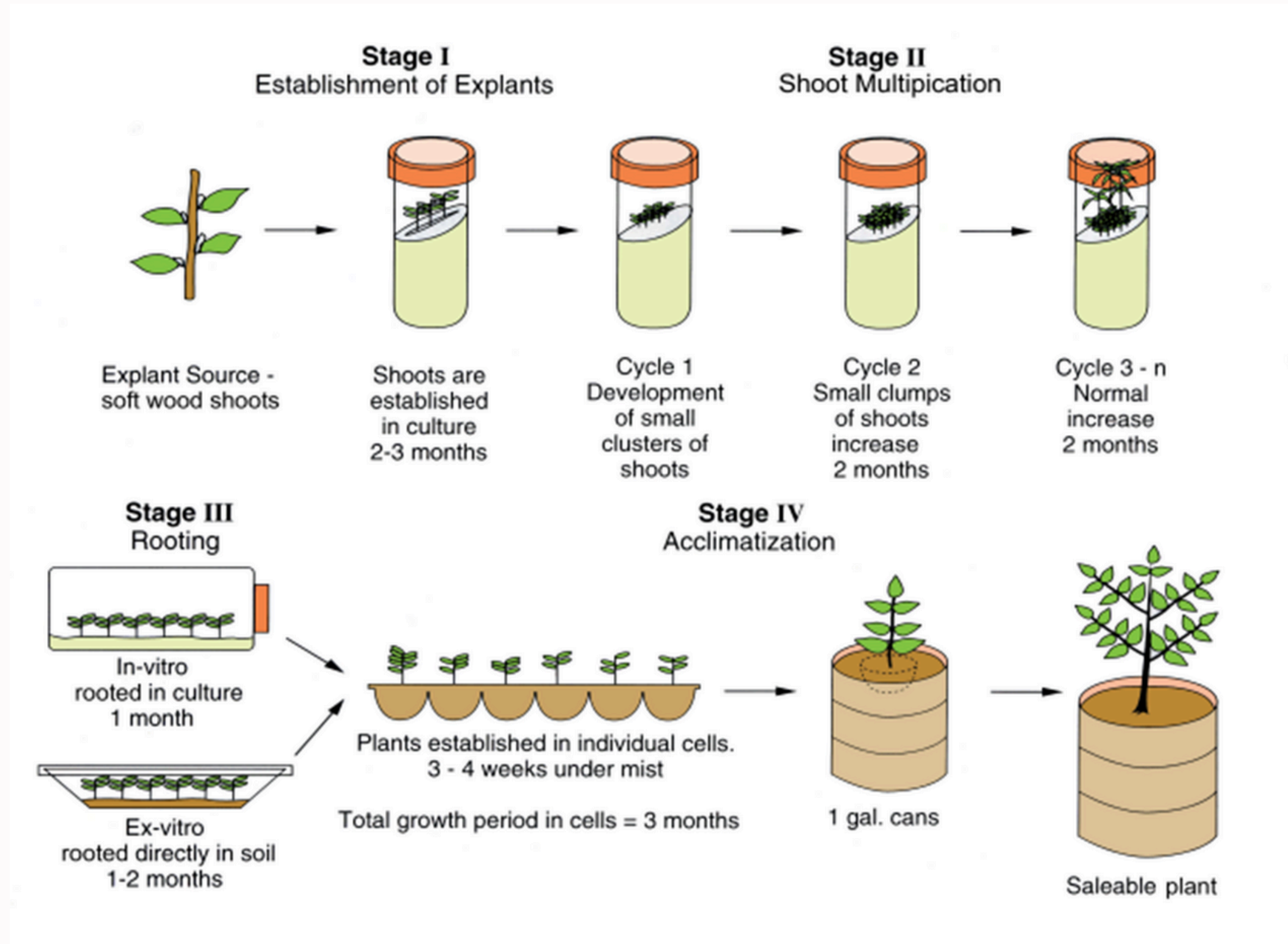
- anorganické a organické látky
- zdroj uhlíku
- ztužení média
- fytohormony a růstové regulátory



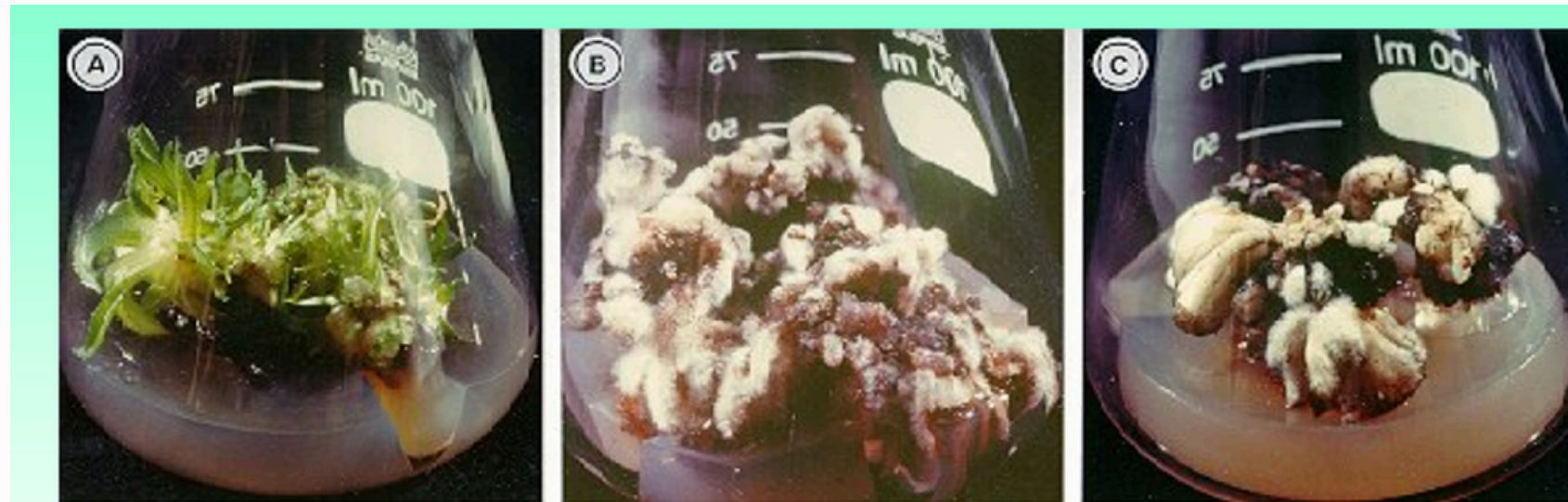
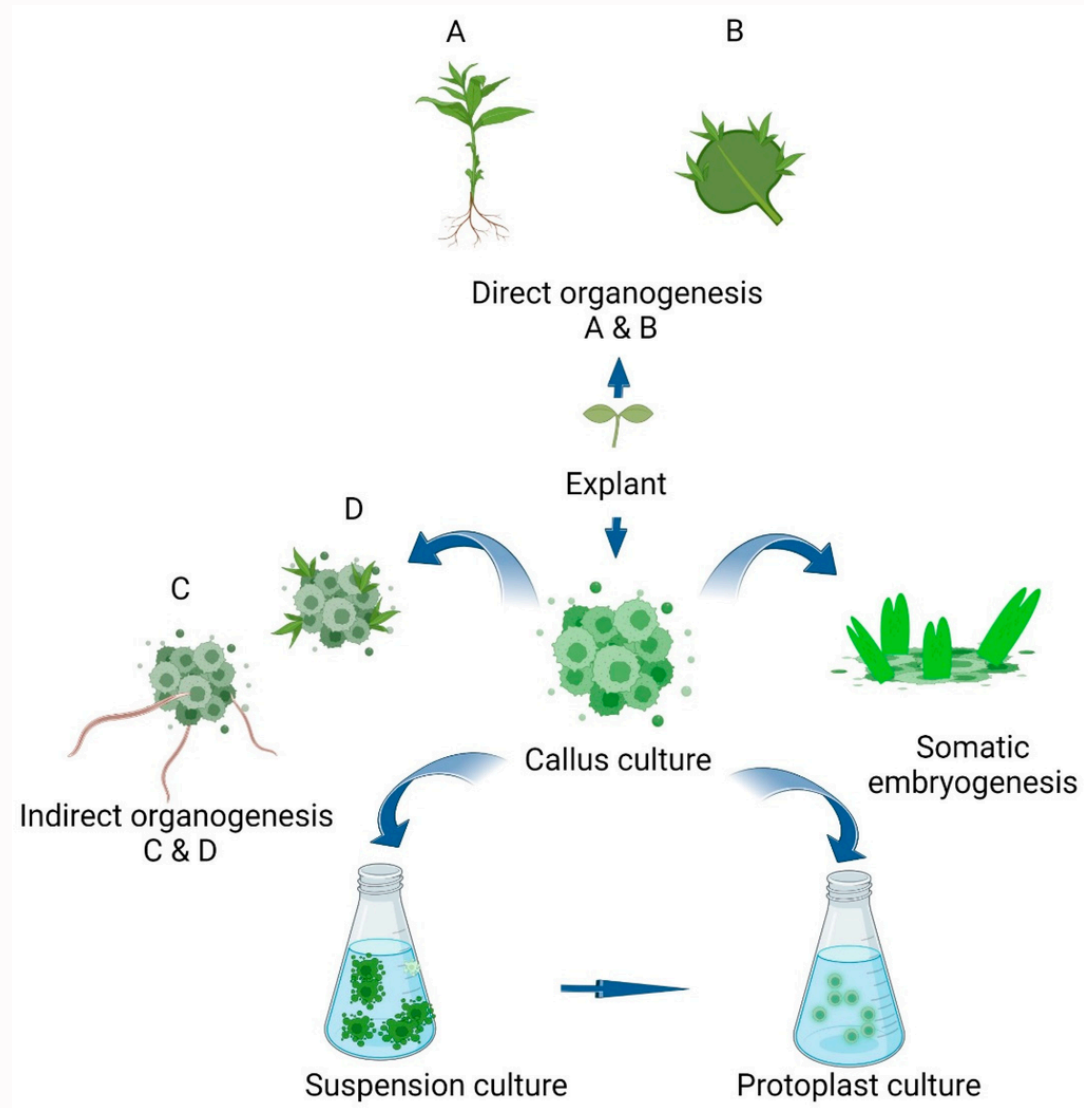
Responses
of Plant
Tissue
Culture to
Kinetin
and Auxin



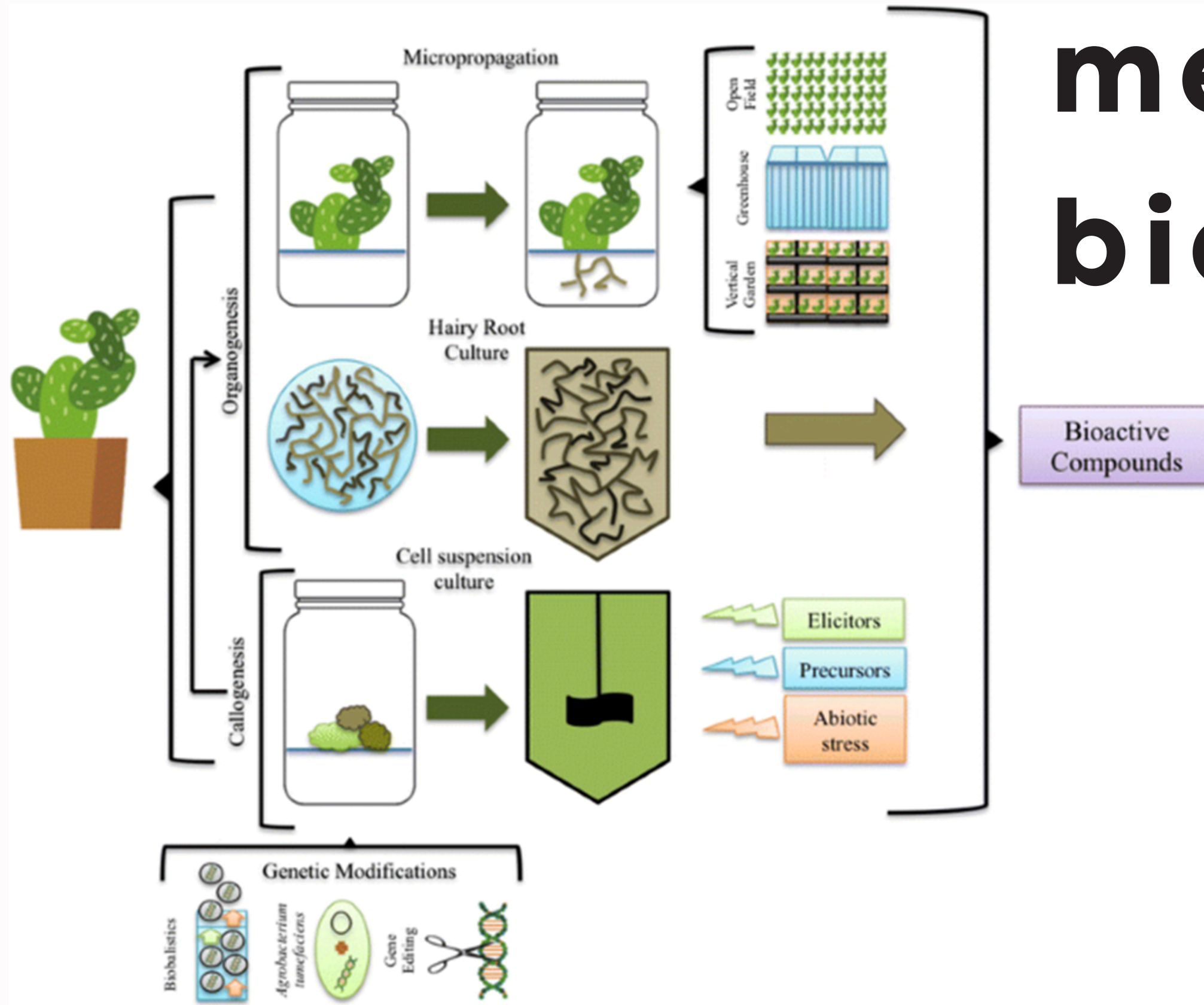
Mikropropagace



Kalus



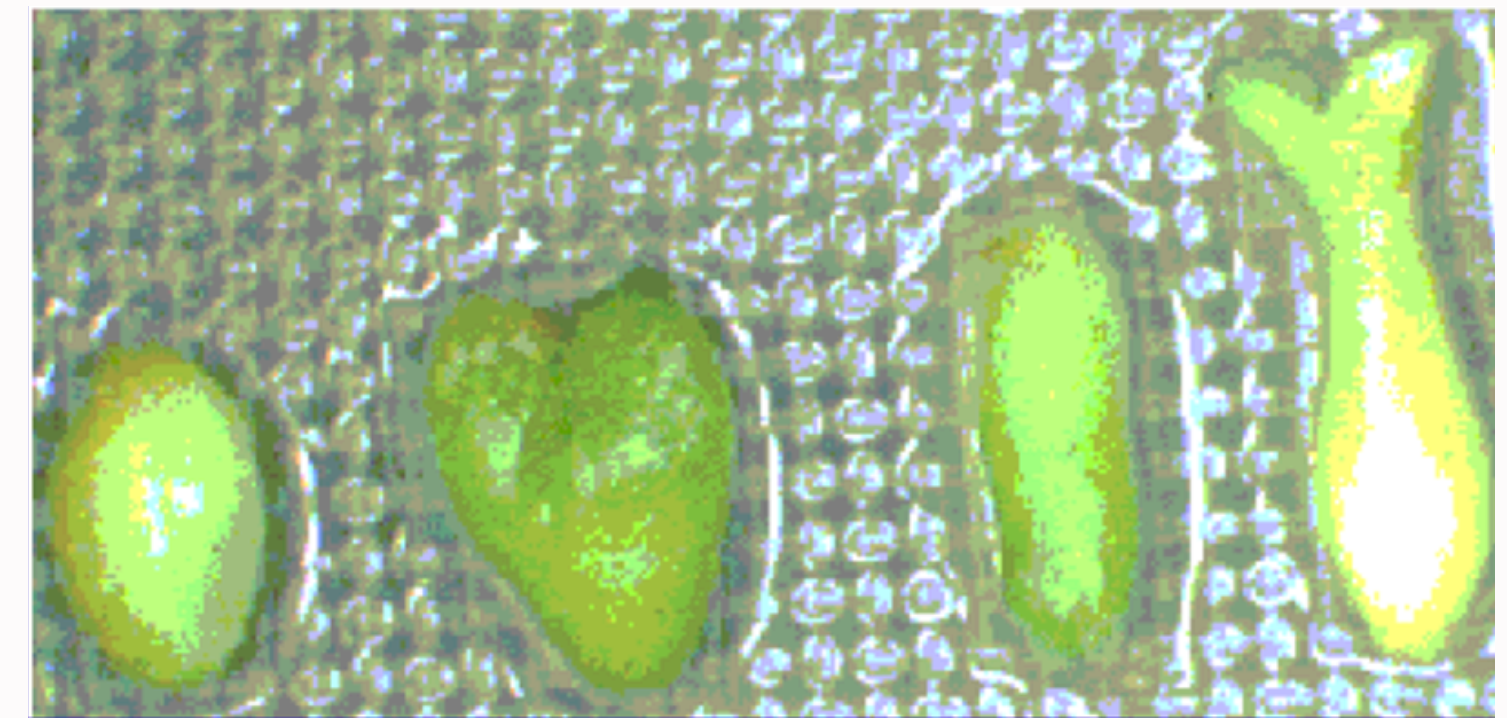
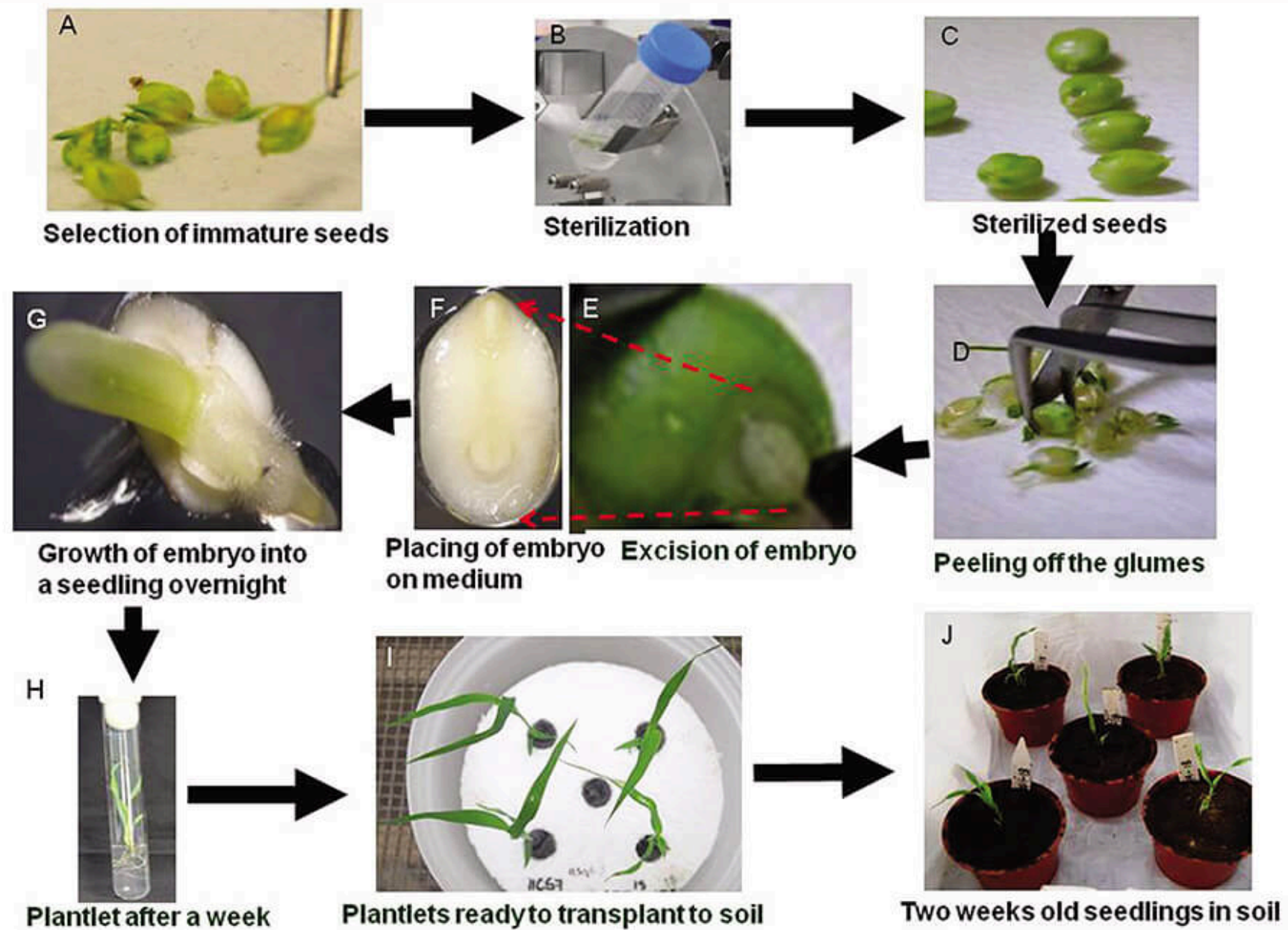
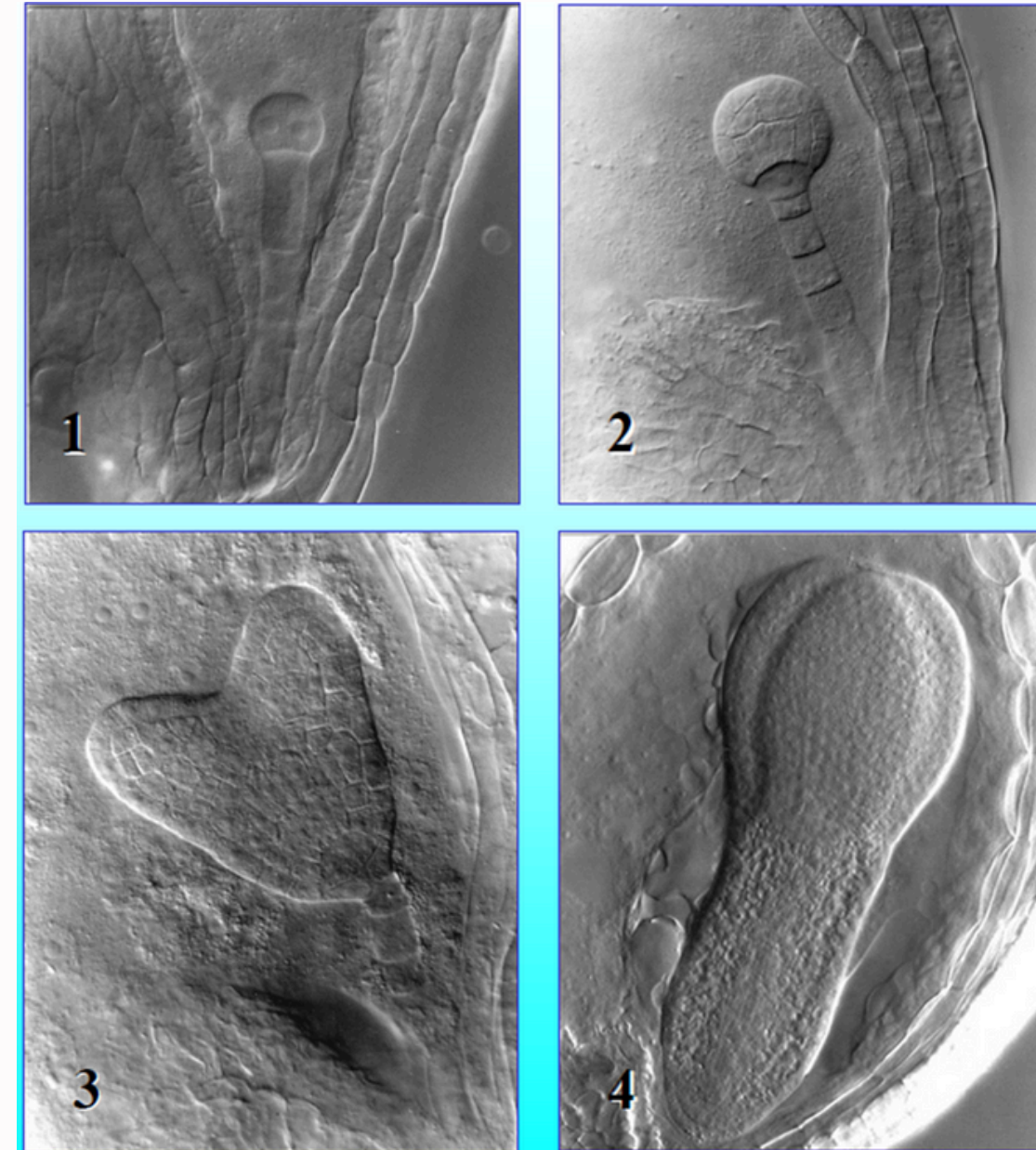
Sekundární metabolity a biotechnologie



alkaloidy
isoprenoidy
terpeny...

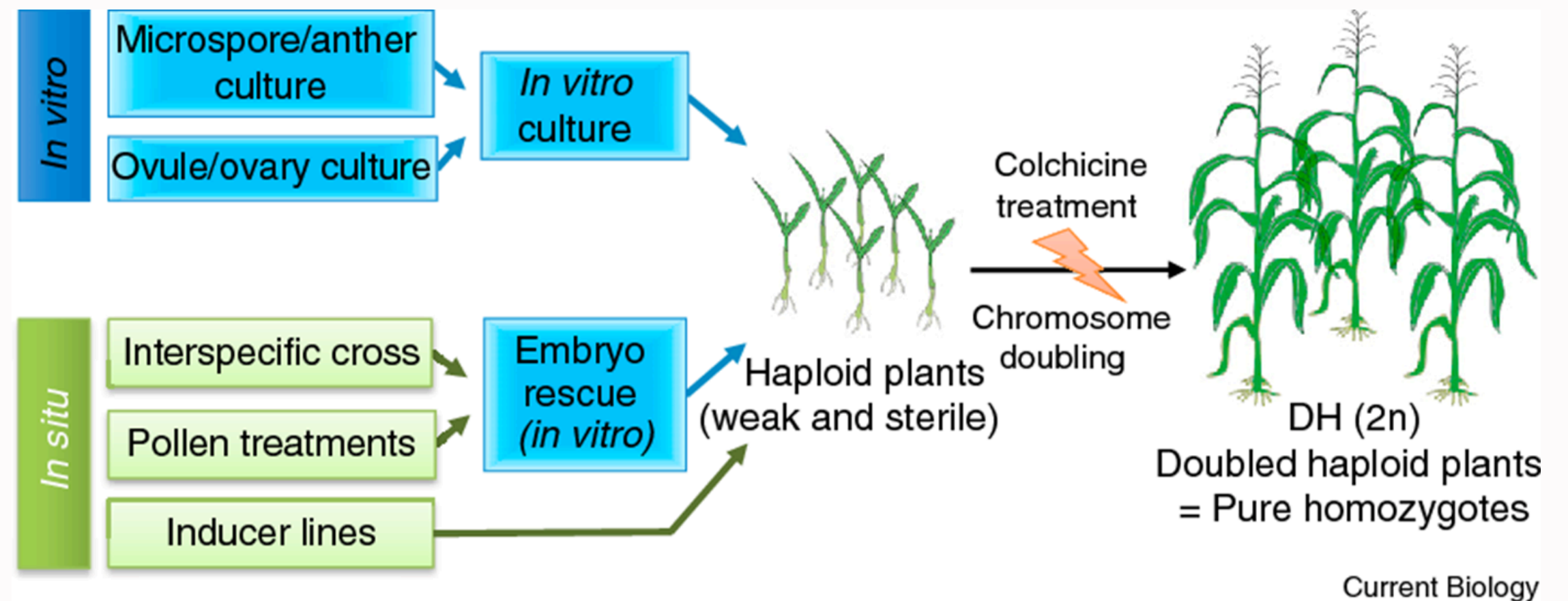
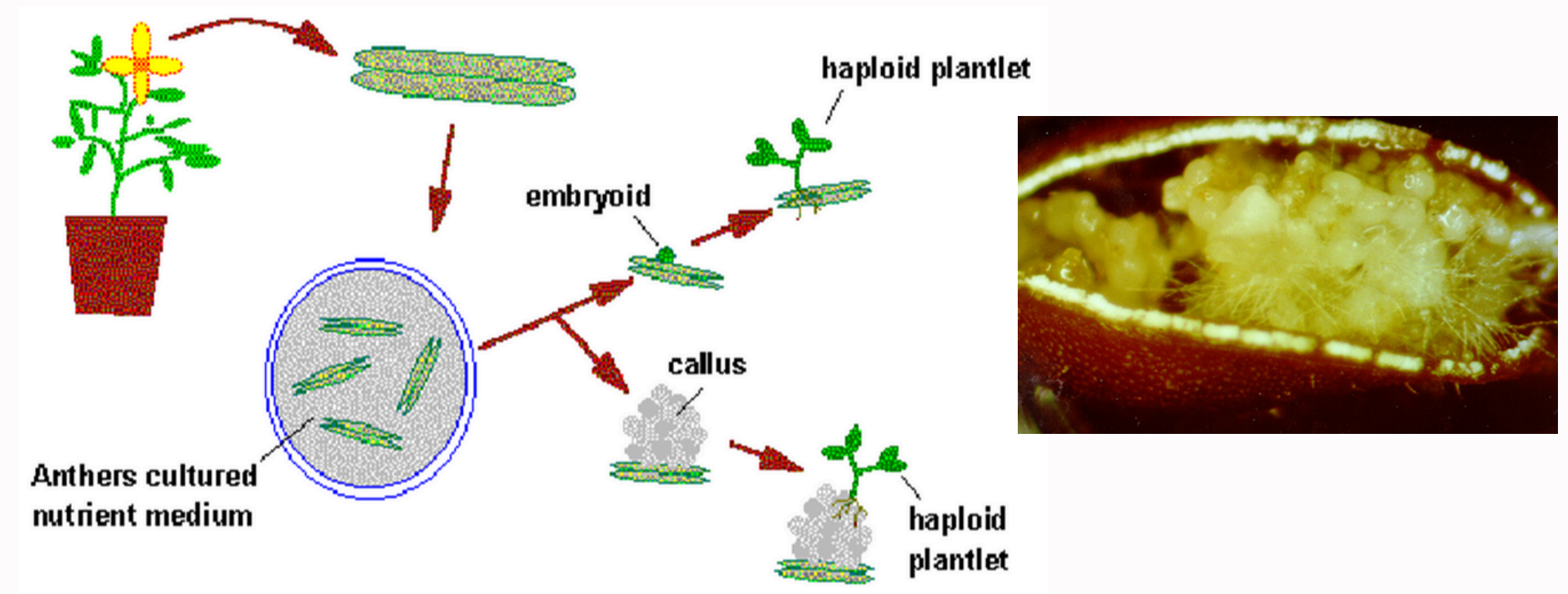
Embrya

- Zygotická a somatická embrya
- “Embryo rescue”

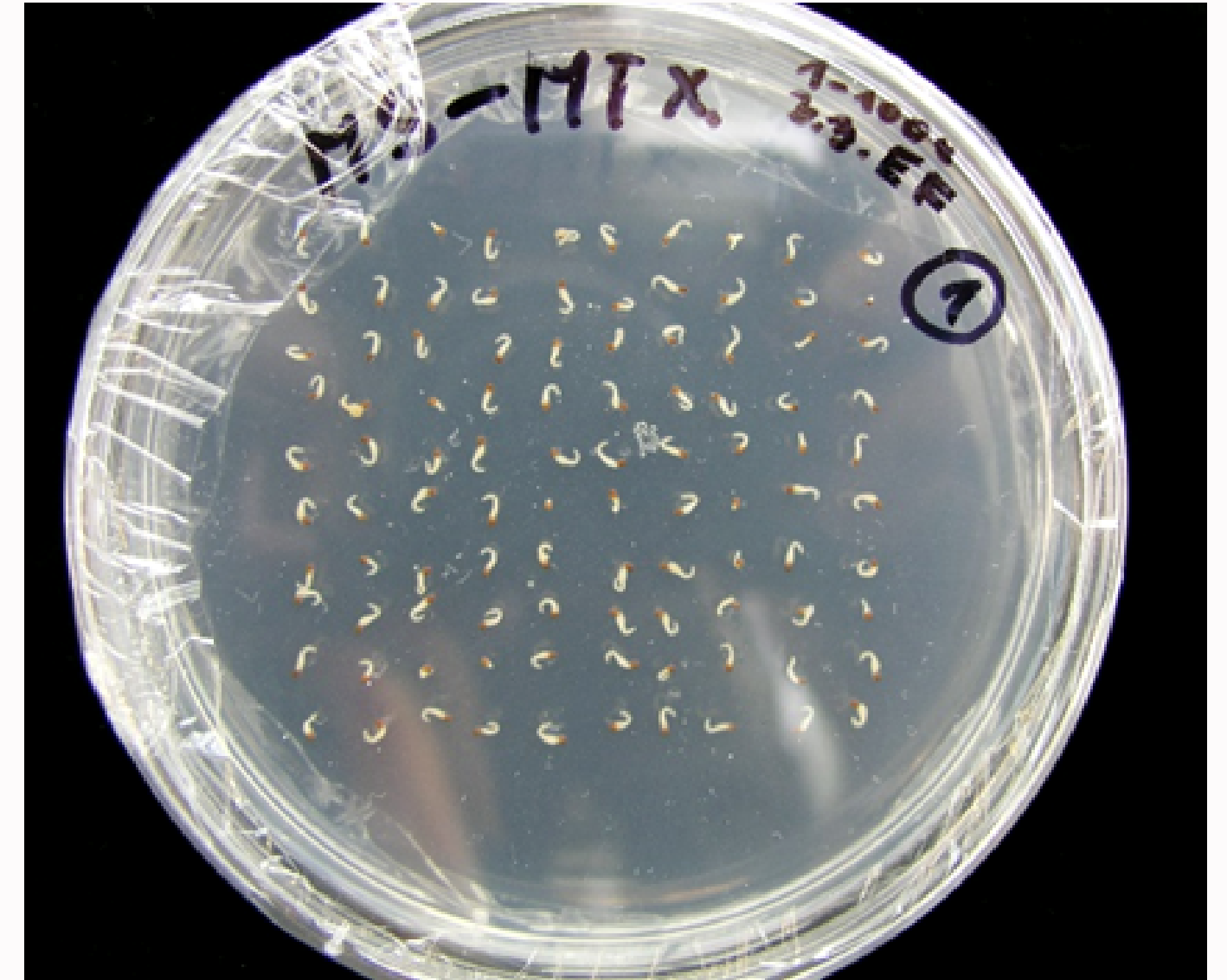
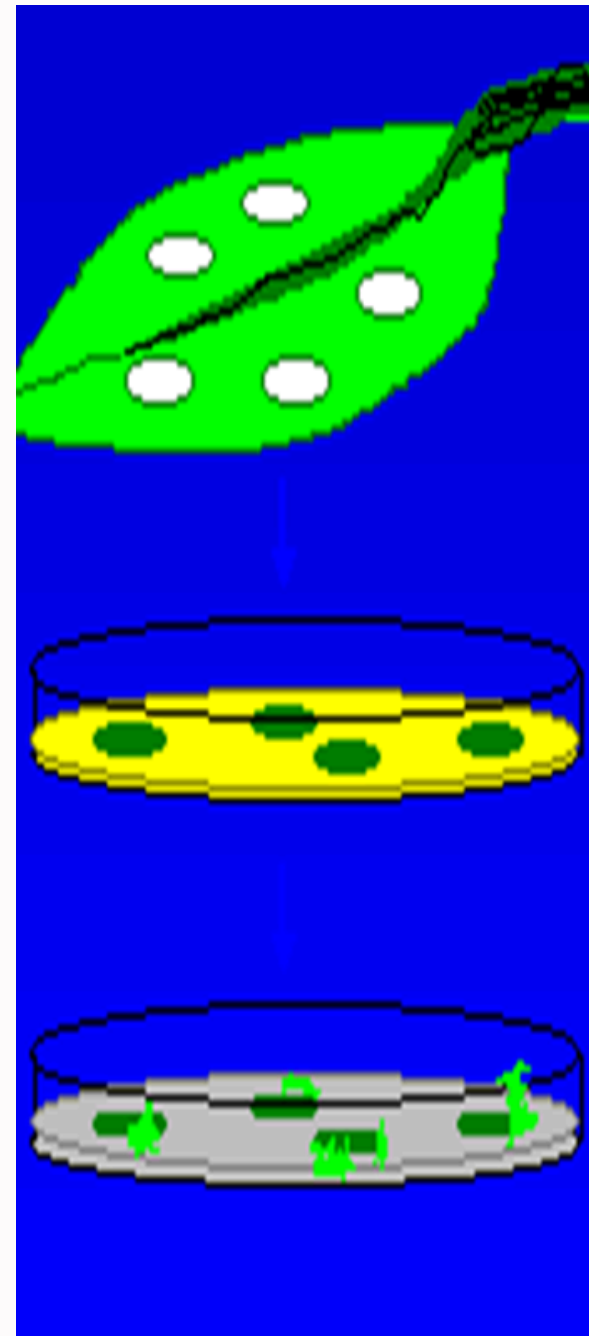
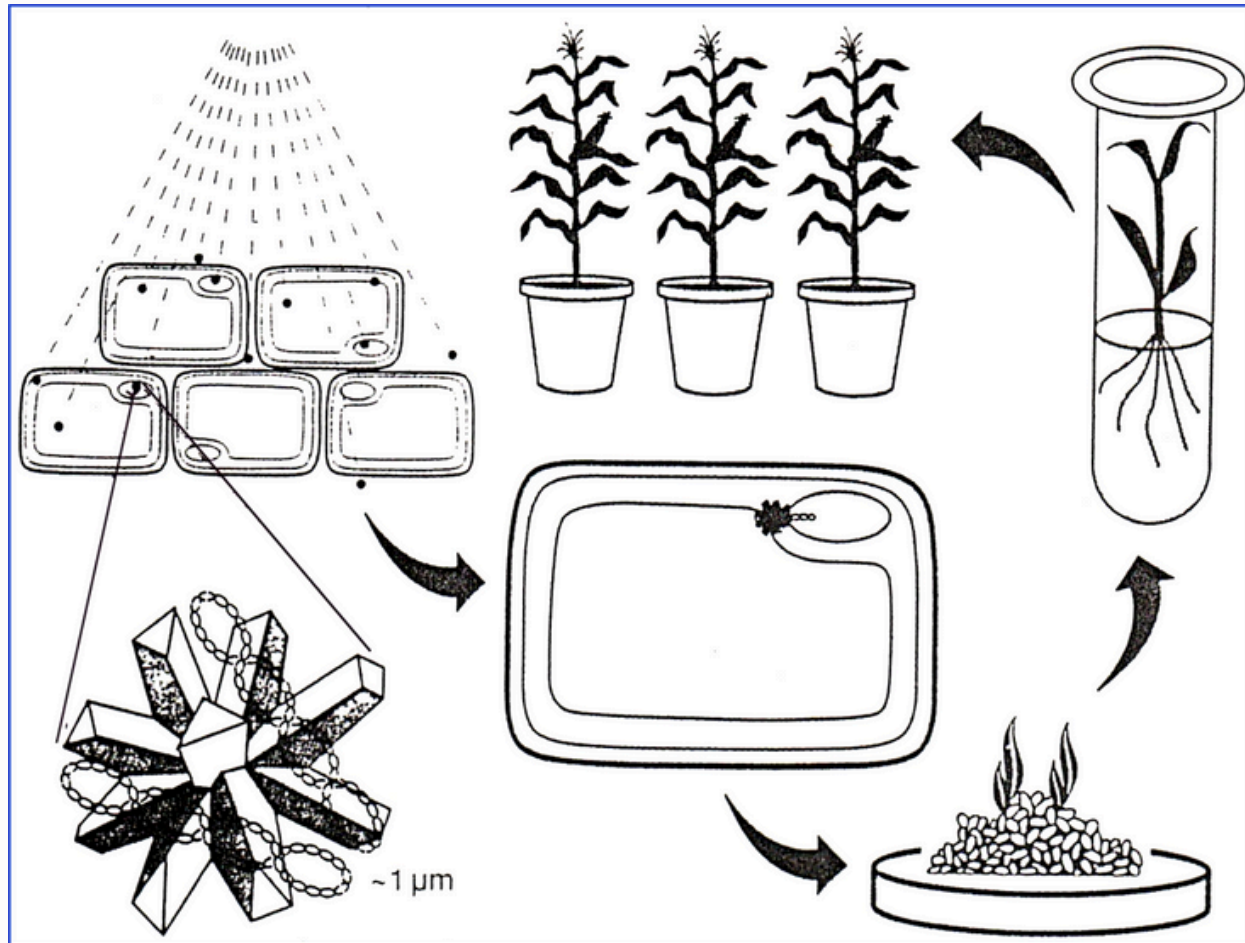


Haploidní rostliny

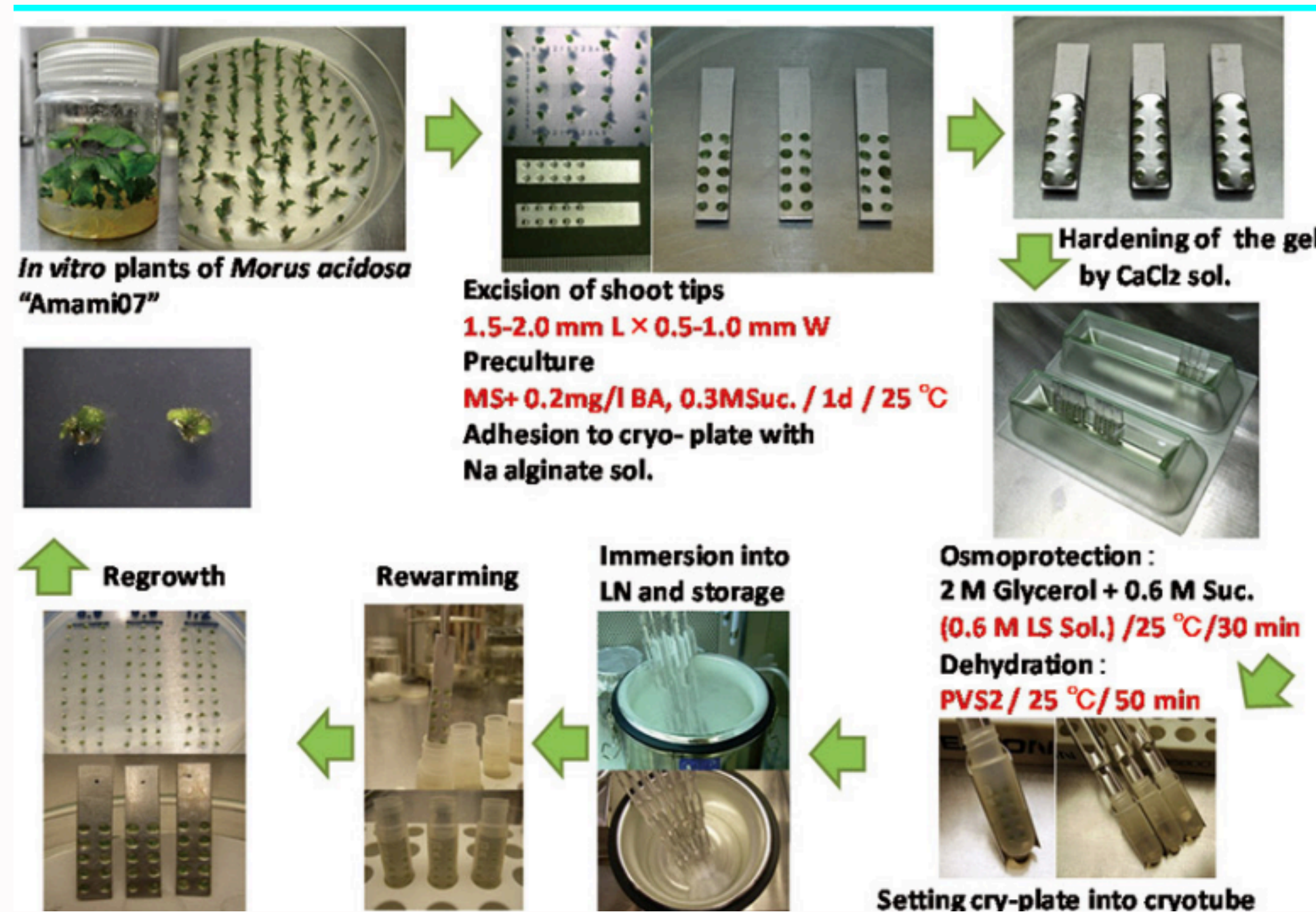
- androgeneze a gynogeneze



Transgenozze

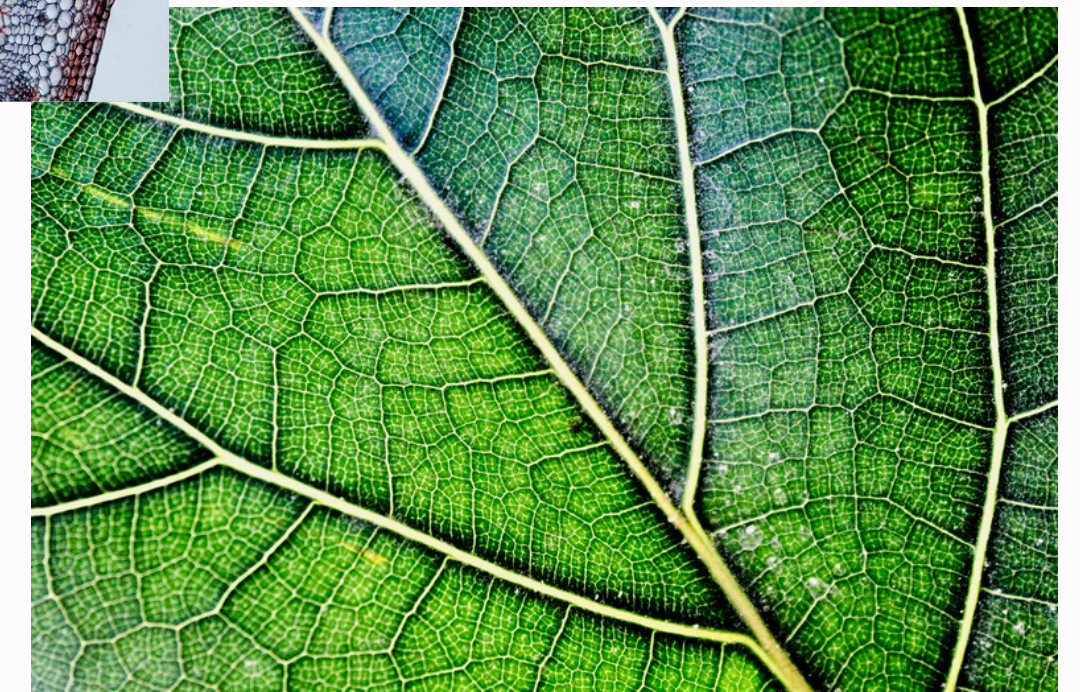
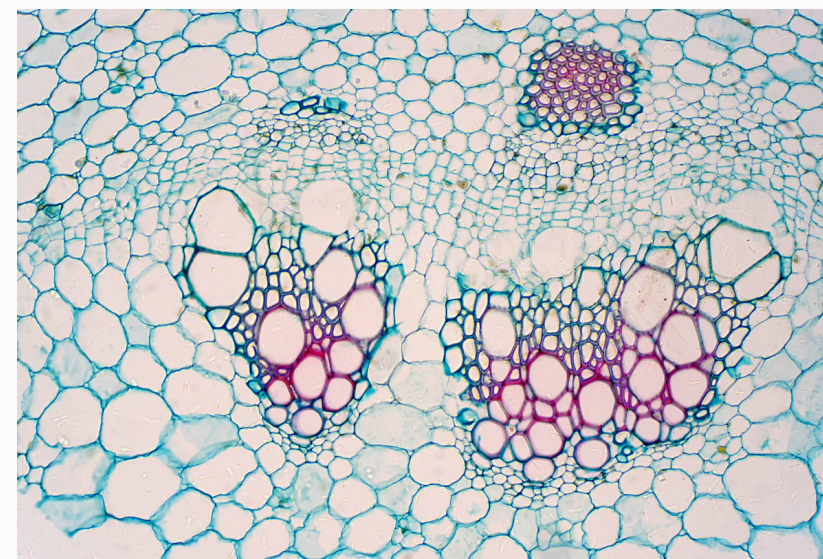
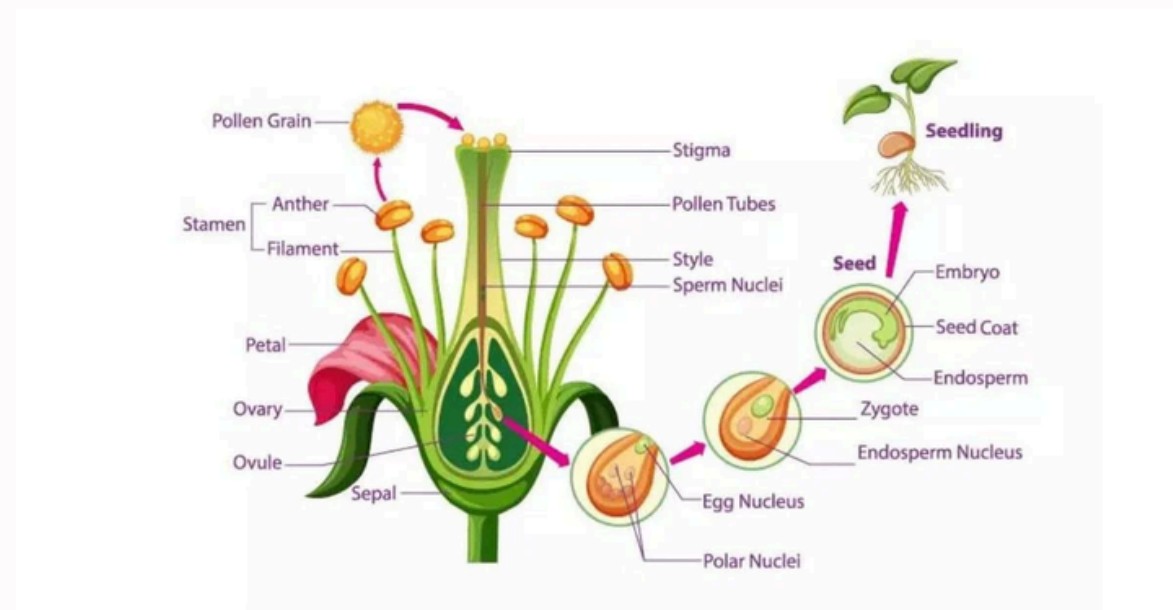
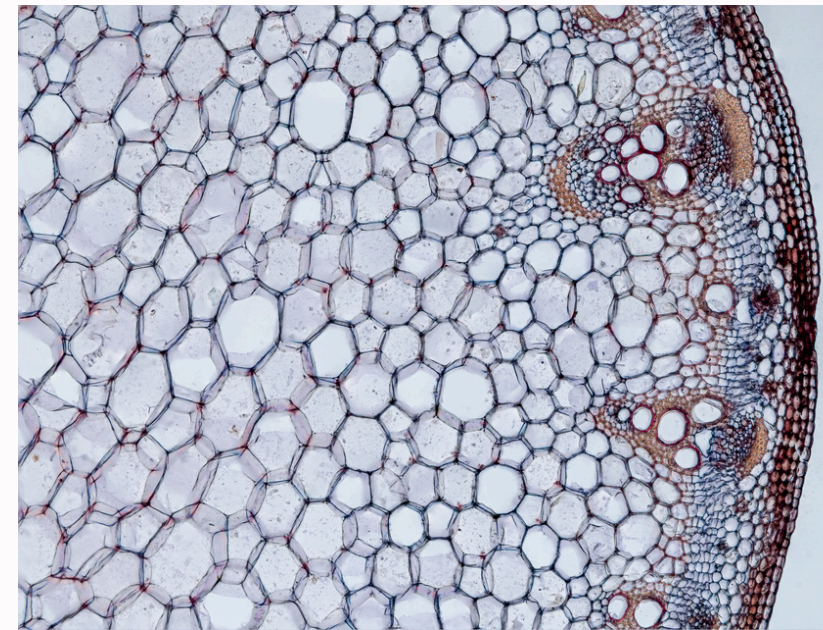


Kryoprezervace



Předměty

- Rostlinné explantáty
- Botanická mikrotechnika
- Rostlinná embryologie



Děkuji za pozornost

