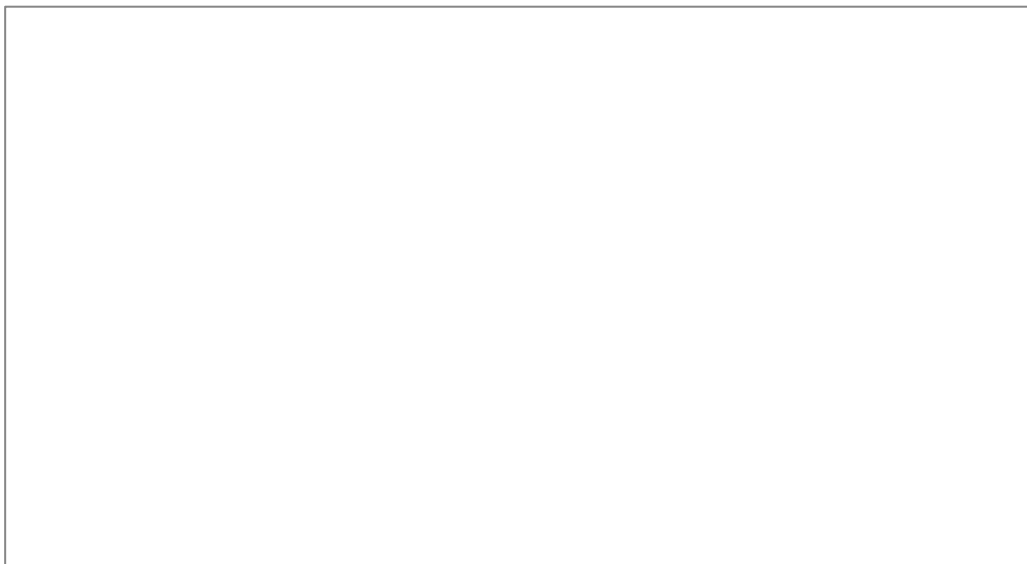


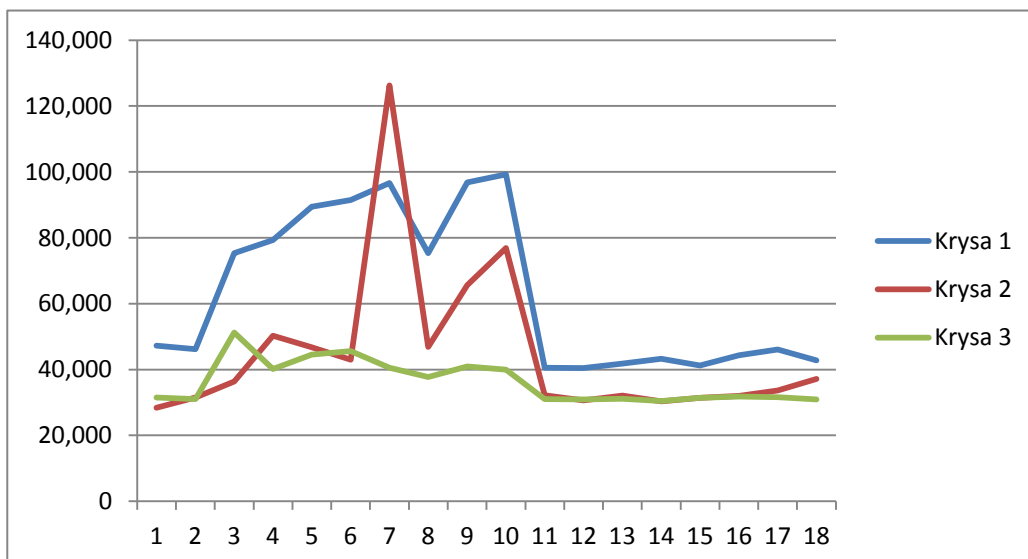
Sloupec1	Sloupec2	Sloupec3	Sloupec4	Sloupec5	Sloupec6	Sloupec7
Krysa 1			Krysa 2			Krysa 3
Plocha	Amplituda	čas amplitudy	Plocha	Amplituda	čas amplitudy	Plocha
[RLU*s]	[RLU]	[s]	[RLU*s]	[RLU]	[s]	[RLU*s]
47,230	36	280	28,390	12	224	31,510
46,150	33	280	31,530	20	2,000	31,060
75,330	75	446	36,380	30	391	51,280
79,300	74	391	50,260	26	446	40,120
89,470	95	391	46,760	32	335	44,510
91,470	96	446	42,930	38	391	45,620
96,640	84	391	126,300	54	1,889	40,590
75,290	57	391	46,900	30	280	37,700
96,820	77	391	65,660	26	335	40,980
99,190	85	335	76,930	35	335	40,010
40,530	34	280	32,220	17	280	31,040
40,420	31	280	30,640	16	224	30,920
41,840	31	224	32,110	19	335	31,090
43,310	34	280	30,360	16	335	30,450
41,230	36	280	31,390	16	224	31,430
44,320	42	280	32,000	16	224	31,780
46,090	46	280	33,660	17	280	31,600
42,760	40	335	37,130	16	224	30,900
63,188	56	332	45,086	24	486	36,255
23053	24	65	23477	10	520	6294

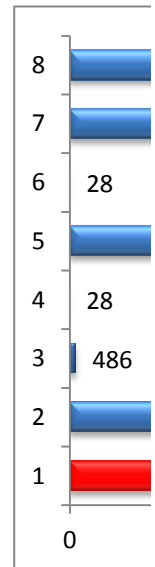
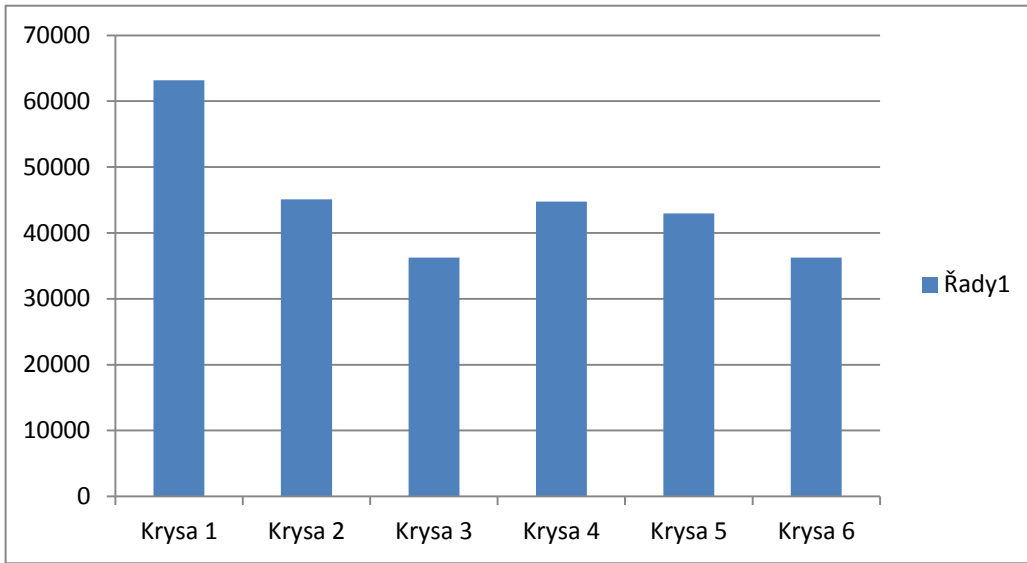
0.02977015



Krysa 1	Krysa 2	Krysa 3	Krysa 4	Krysa 5	Krysa 6
Plocha	Plocha	Plocha	Plocha	Plocha	Plocha
[RLU*s]	[RLU*s]	[RLU*s]	[RLU*s]	[RLU*s]	[RLU*s]
47230	28390	31510	35200	38260	31510
46150	31530	31060	31150	37950	31060
75330	36380	51280	49740	45810	51280
79300	50260	40120	45940	49010	40120
89470	46760	44510	53040	45870	44510
91470	42930	45620	52490	44040	45620
96640	126300	40590	69300	52730	40590
75290	46900	37700	73030	54700	37700
96820	65660	40980	84530	47540	40980
99190	76930	40010	70110	46230	40010
40530	32220	31040	29980	36150	31040
40420	30640	30920	29700	51820	30920
41840	32110	31090	28620	36290	31090
43310	30360	30450	28790	35150	30450
41230	31390	31430	33430	36710	31430
44320	32000	31780	29370	36210	31780
46090	33660	31600	31230	40120	31600
42760	37130	30900	29950	38480	30900
63188.3333	45086.1111	36255	44755.5556	42948.3333	36255

Sloupec8	Sloupec9	Sloupec10	Sloupec11	Sloupec12	Sloupec13	Sloupec14
		Krysa 4			Krysa 5	
Amplituda [RLU]	čas amplitudy [s]	Plocha [RLU*s]	Amplituda [RLU]	čas amplitudy [s]	Plocha [RLU*s]	Amplituda [RLU]
16	1,336	35,200	21	224	38,260	20
11	3,336	31,150	20	280	37,950	21
77	280	49,740	47	391	45,810	37
42	224	45,940	43	335	49,010	32
60	280	53,040	47	280	45,870	37
56	335	52,490	54	280	44,040	31
46	280	69,300	66	335	52,730	39
31	280	73,030	74	391	54,700	38
41	280	84,530	65	447	47,540	30
36	391	70,110	64	391	46,230	34
10	113	29,980	18	224	36,150	22
11	169	29,700	17	224	51,820	30
10	224	28,620	16	224	36,290	22
10	113	28,790	19	224	35,150	19
10	335	33,430	19	280	36,710	20
14	2,003	29,370	18	2	36,210	21
14	1,947	31,230	21	224	40,120	27
11	224	29,950	19	280	38,480	22
28	675	44,756	36	280	42,948	28
21	866	17928	21	96	6279	7





Sloupec15	Sloupec16	Sloupec17	Sloupec18
	Krysa 6		
čas amplitudy	Plocha	Amplituda	čas amplitudy
[s]	[RLU*s]	[RLU]	[s]
1,280	31,510	16	1,336
391	31,060	11	3,336
335	51,280	77	280
335	40,120	42	224
391	44,510	60	280
335	45,620	56	335
335	40,590	46	280
391	37,700	31	280
391	40,980	41	280
391	40,010	36	391
335	31,040	10	113
224	30,920	11	169
335	31,090	10	224
280	30,450	10	113
280	31,430	10	335
391	31,780	14	2,003
613	31,600	14	1,947
558	30,900	11	224
422	36,255	28	675
226	6294	21	866

