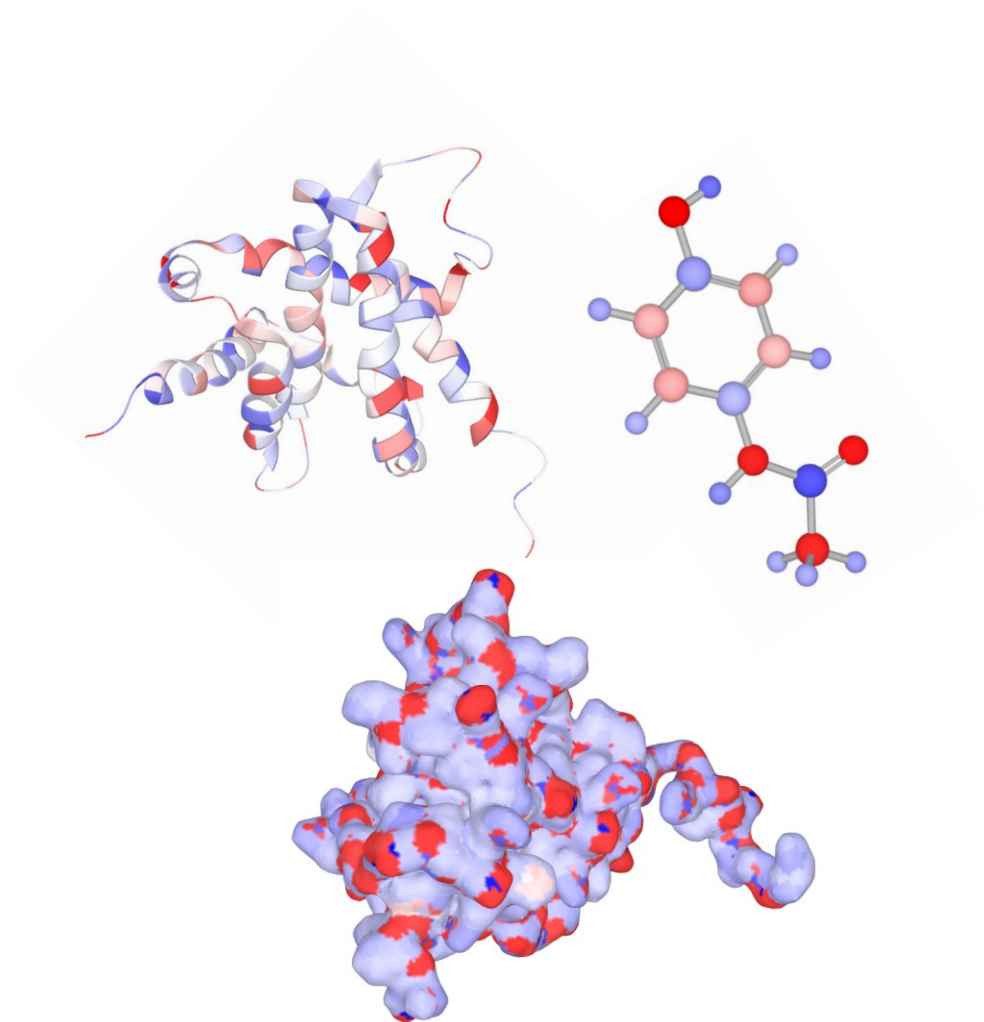


ACC II: Calculation of partial atomic charges

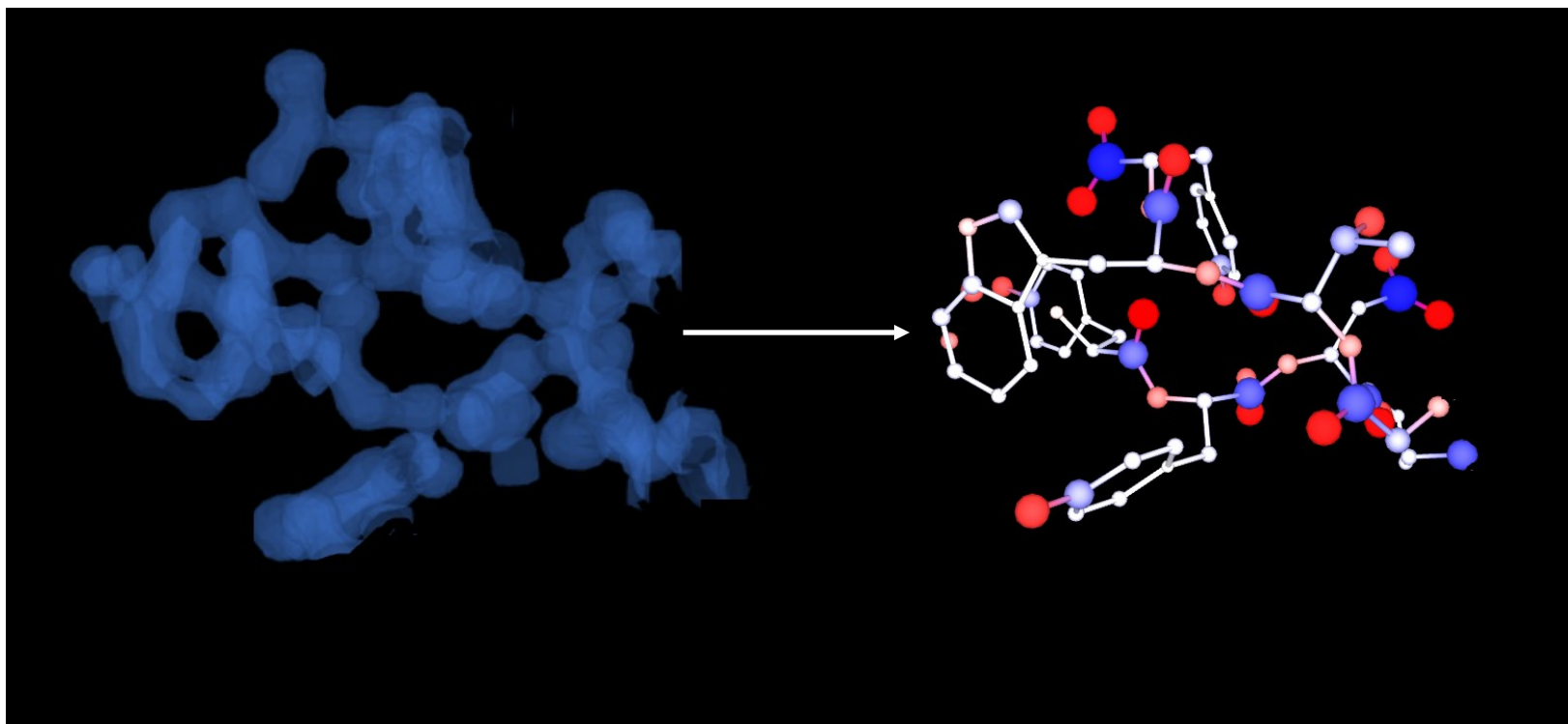
Radka Svobodová

**CEITEC
MASARYK UNIVERSITY**



Partial atomic charges

Real numbers describing distribution of electron density among atoms.



Application of partial atomic charges

Application fields:

- Organic chemistry
- Physical chemistry
- **Computational chemistry**
- **Chemoinformatics**
- **Bioinformatics**
- Nanoscience

Applications:

- Prediction of electrostatic interactions
- Molecular mechanics and dynamics
- Docking
- Virtual screening
- QSAR/QSPR modeling
- Prediction of bonding sites
- Similarity search

How to obtain charges?

**Partial atomic charges
= a theoretical concept**

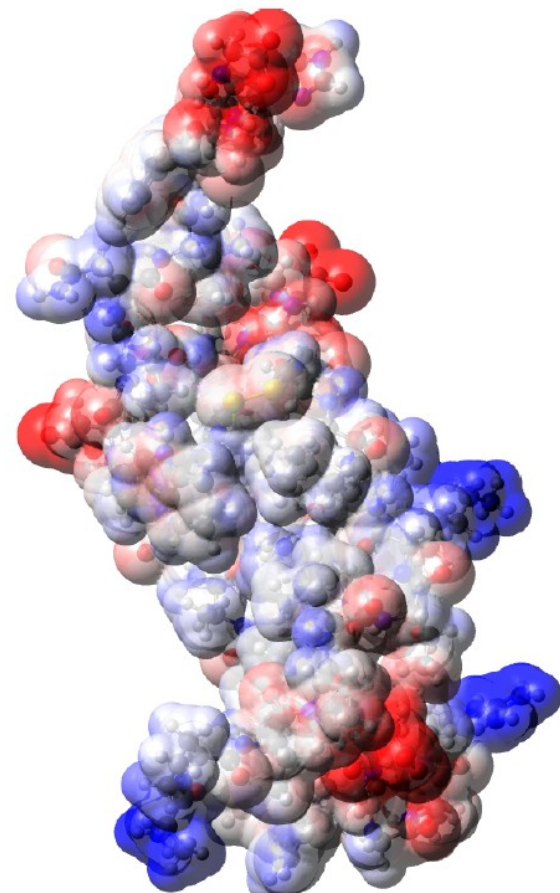
We cannot measure them!
We can only compute them.

Consequences:

- Many different charge calculation approaches were developed
- We cannot select the best approach

Validation:

We can calculate something measurable from them.



Charge calculation approaches

Quantum mechanical methods

Advantages:

- Calculated ab-initio
- High quality charges

Disadvantages:

- Computationally expensive
- Complexity from $O(E^3)$ to $O(E^6)$, where E is a number of electrons
- **Cannot be used for macromolecules**

Charge calculation approaches

Quantum mechanical methods

Advantages:

- Calculated ab-initio
- High quality charges

Disadvantages:

- Computationally expensive
- Complexity from
- $O(E^3)$ to $O(E^6)$, where E is a number of electrons
- **Cannot be used for macromolecules**

Empirical methods

Advantages:

- Fast calculation
- Complexity $O(N^3)$, where N is a number of atoms

Disadvantages:

- Fitted to QM charges
- Necessity of parameterization – not easy

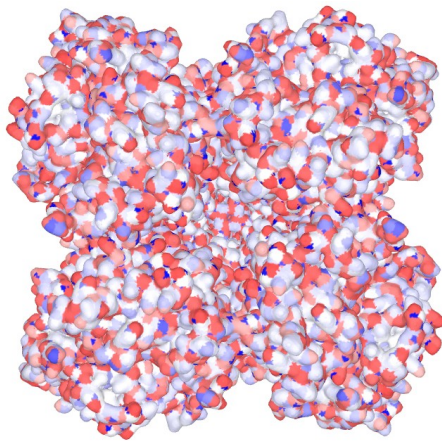
Empirical charge calculation approaches

Conformationally independent (2D):

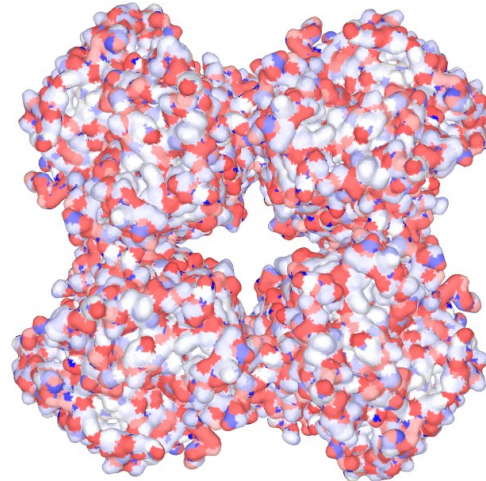
- Based on molecular 2D structure
- Does not reflect conformational changes

Conformationally dependent (3D):

- Based on molecular 3D structure
- Different conformation ~ different charges

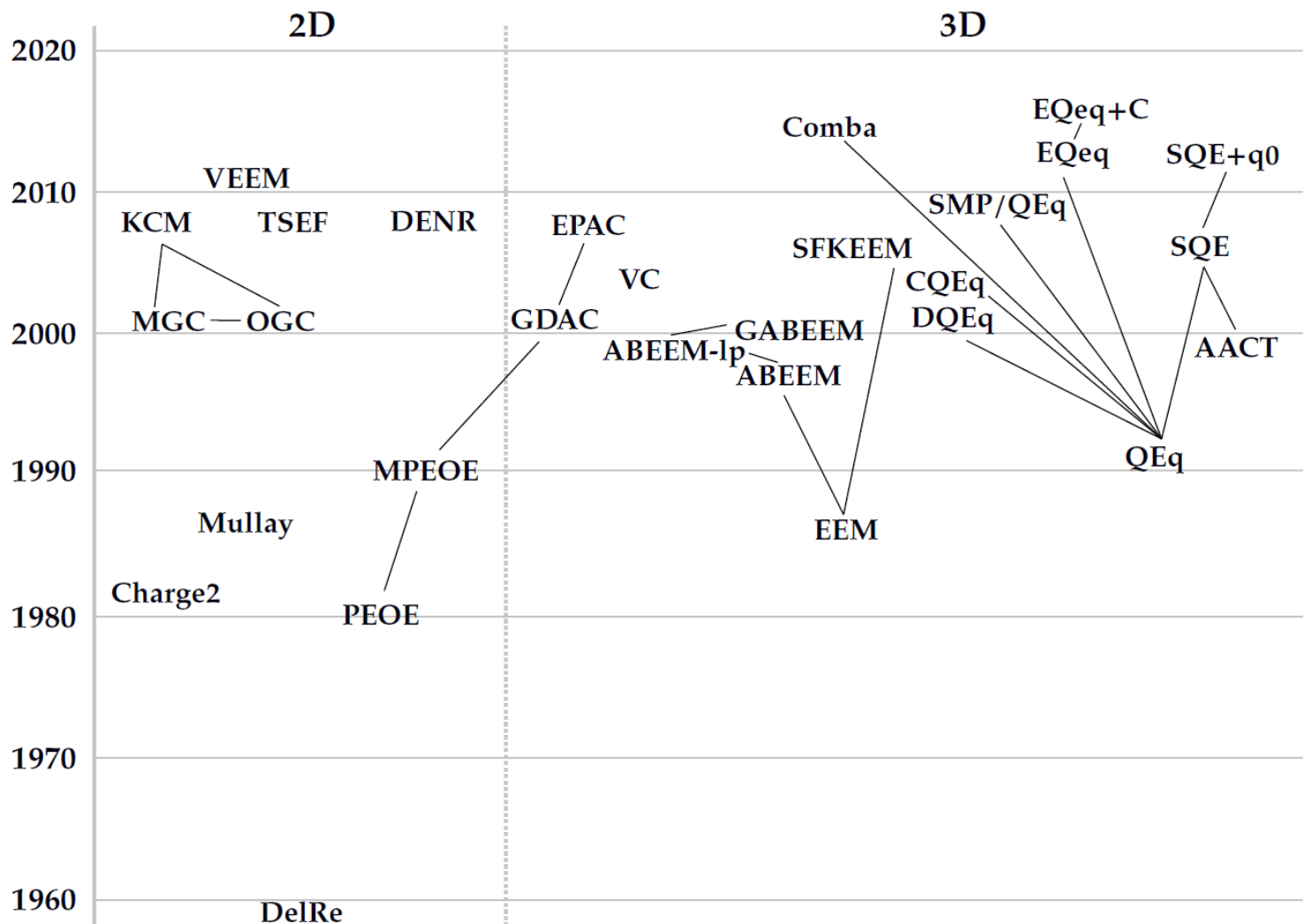


BK channel closed

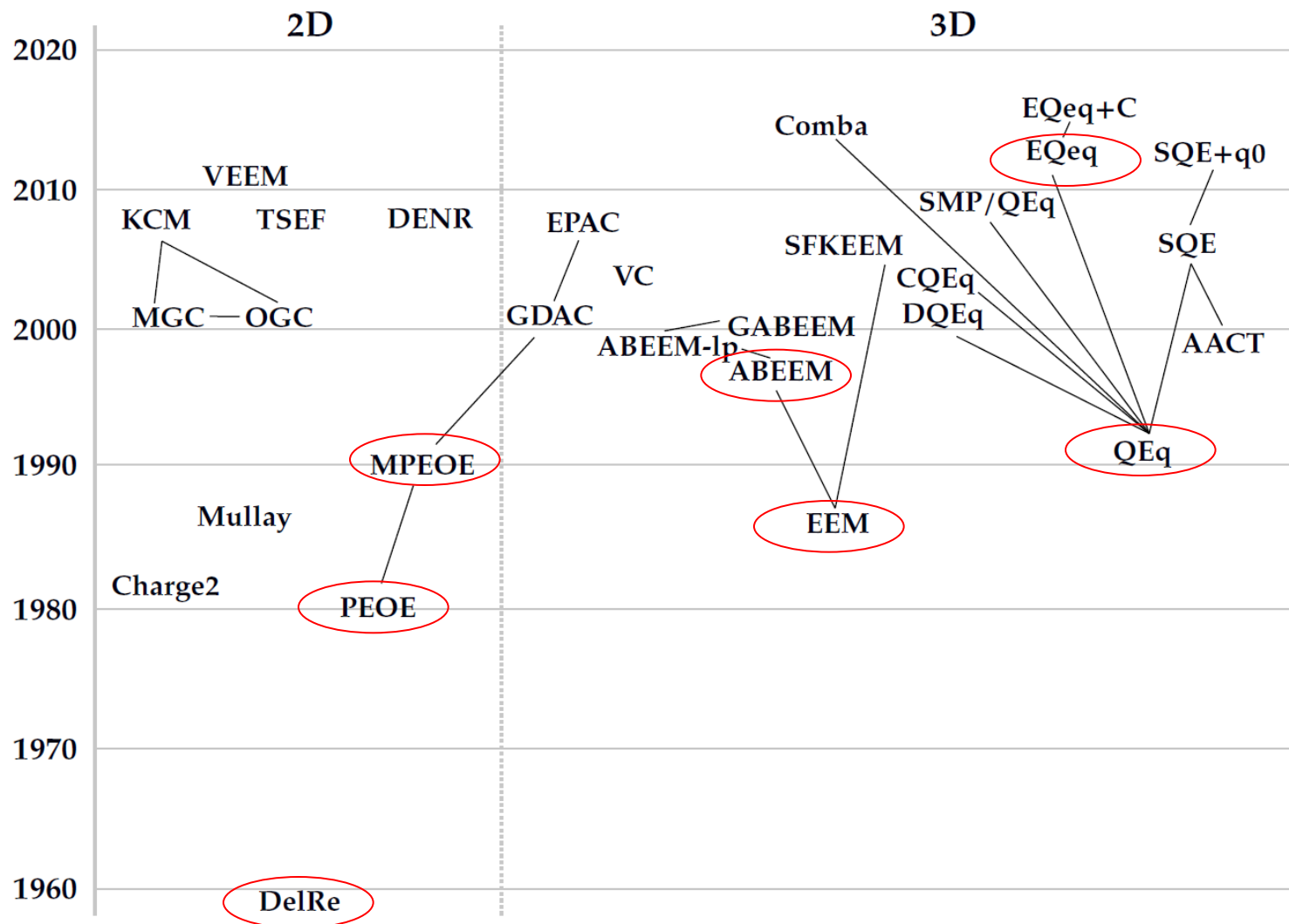


BK channel open

Empirical charge calculation approaches



Empirical charge calculation approaches



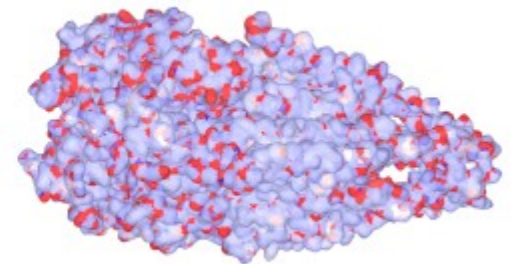
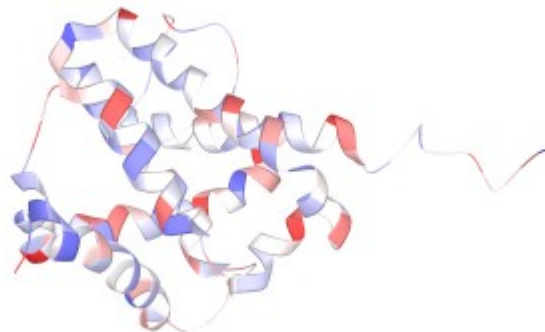
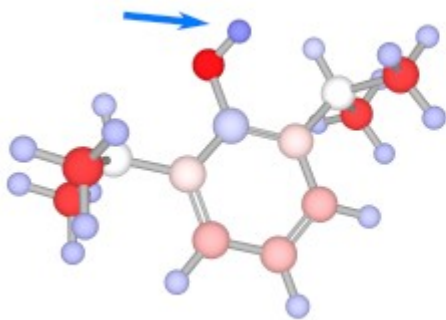
Electronegativity Equalization Method (EEM):

$$\begin{bmatrix} B_1 & R_{1,2}^{-1} & \cdots & R_{1,N}^{-1} & 1 \\ R_{2,1}^{-1} & B_2 & \cdots & R_{2,N}^{-1} & 1 \\ \vdots & \vdots & \ddots & \vdots & \vdots \\ R_{N,1}^{-1} & R_{N,2}^{-1} & \cdots & B_N & 1 \\ 1 & 1 & \cdots & 1 & 0 \end{bmatrix} \cdot \begin{bmatrix} q_1 \\ q_2 \\ \vdots \\ q_N \\ -\bar{\chi} \end{bmatrix} = \begin{bmatrix} -A_1 \\ -A_2 \\ \vdots \\ -A_N \\ Q \end{bmatrix}$$

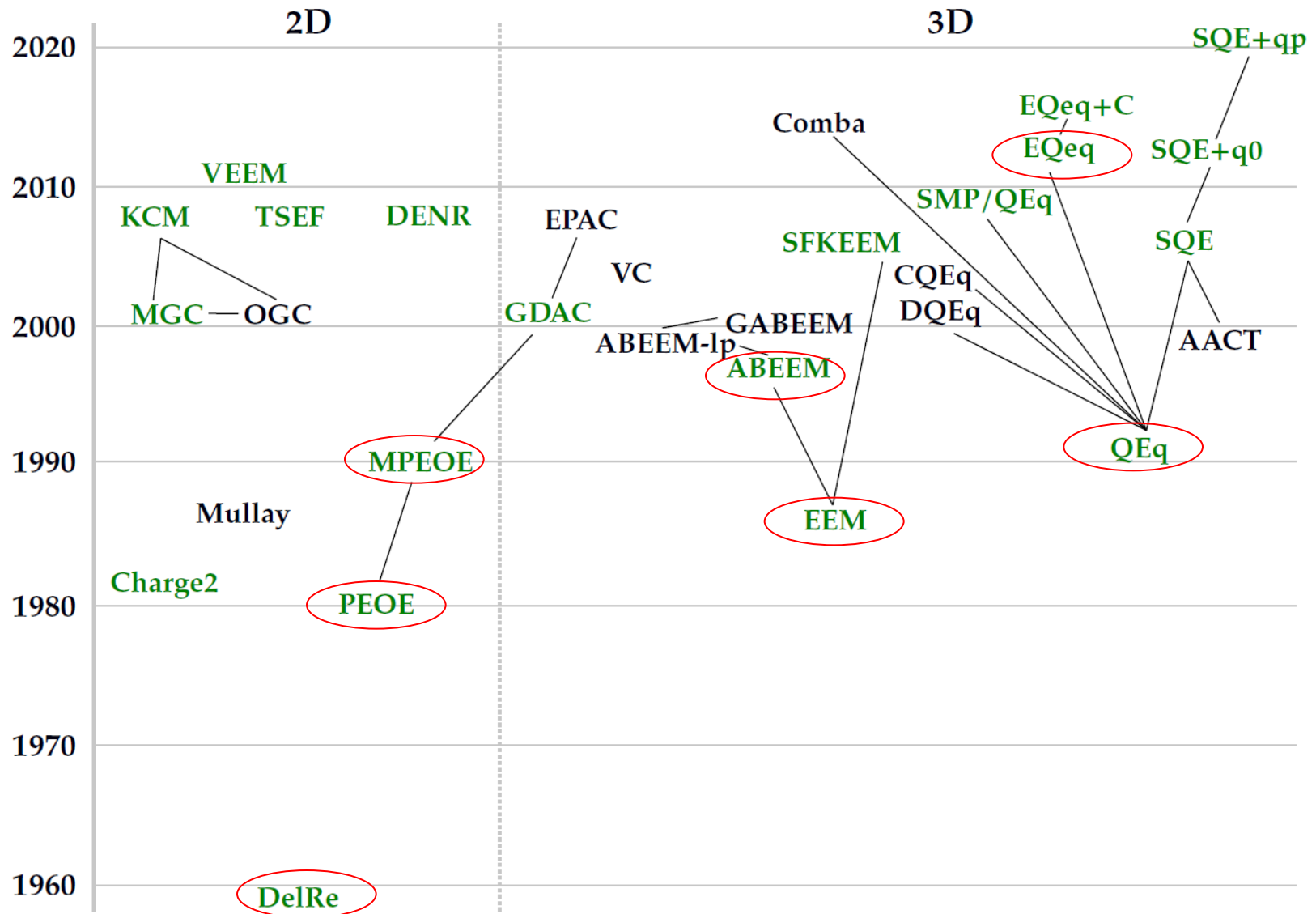
$$Q = \sum_i^N q_i$$

Atomic Charge Calculator II (ACC II)

- **Includes 20 empirical charge calculation methods**
- **Inputs:** SDF, MOL2, PDB, mmCIF
or archive with these files
- **Outputs:** plain text, Mol2, PQR
- **Visualization:** LiteMol plugin
- **Web page:** <https://acc2.ncbr.muni.cz>
- **Command line application available**

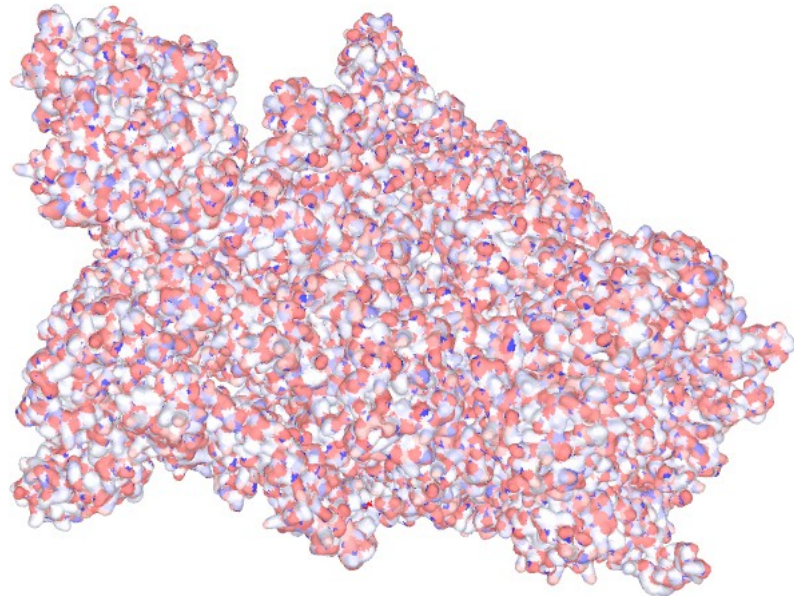


ACC II: empirical methods included



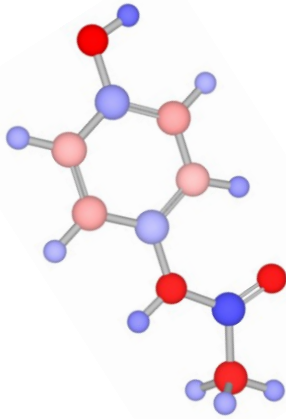
ACC II: workflow

- Uploading the structure(s)
- Internal validation
- Selecting the empirical method and its parameter set
- Executing the selected method:
 - If large molecules, the Cutoff or Cover approaches are used
- Visualizing the computed charges



ACC II: visualization

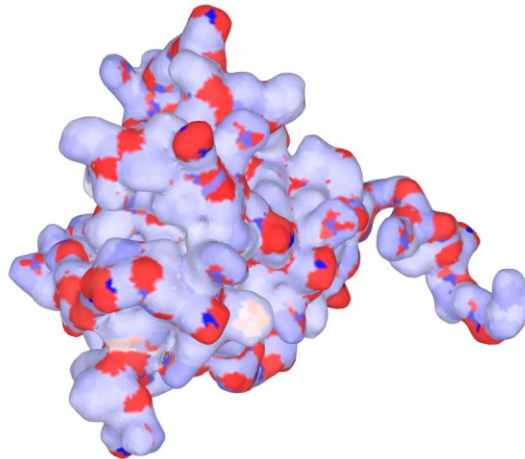
balls and sticks



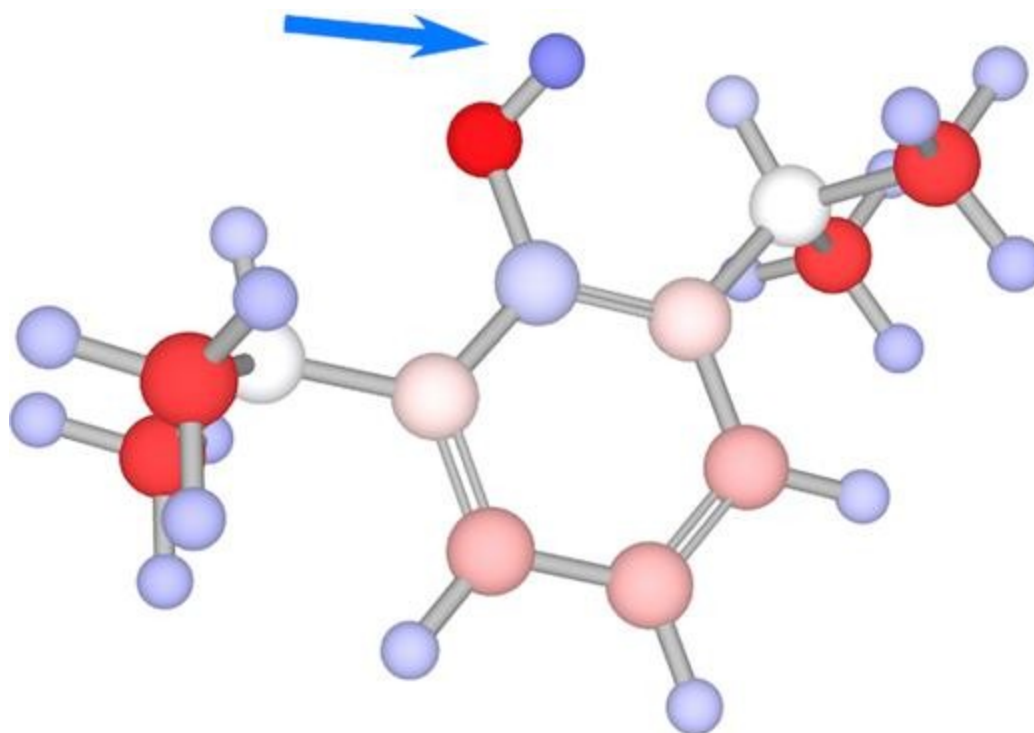
cartoon



surface



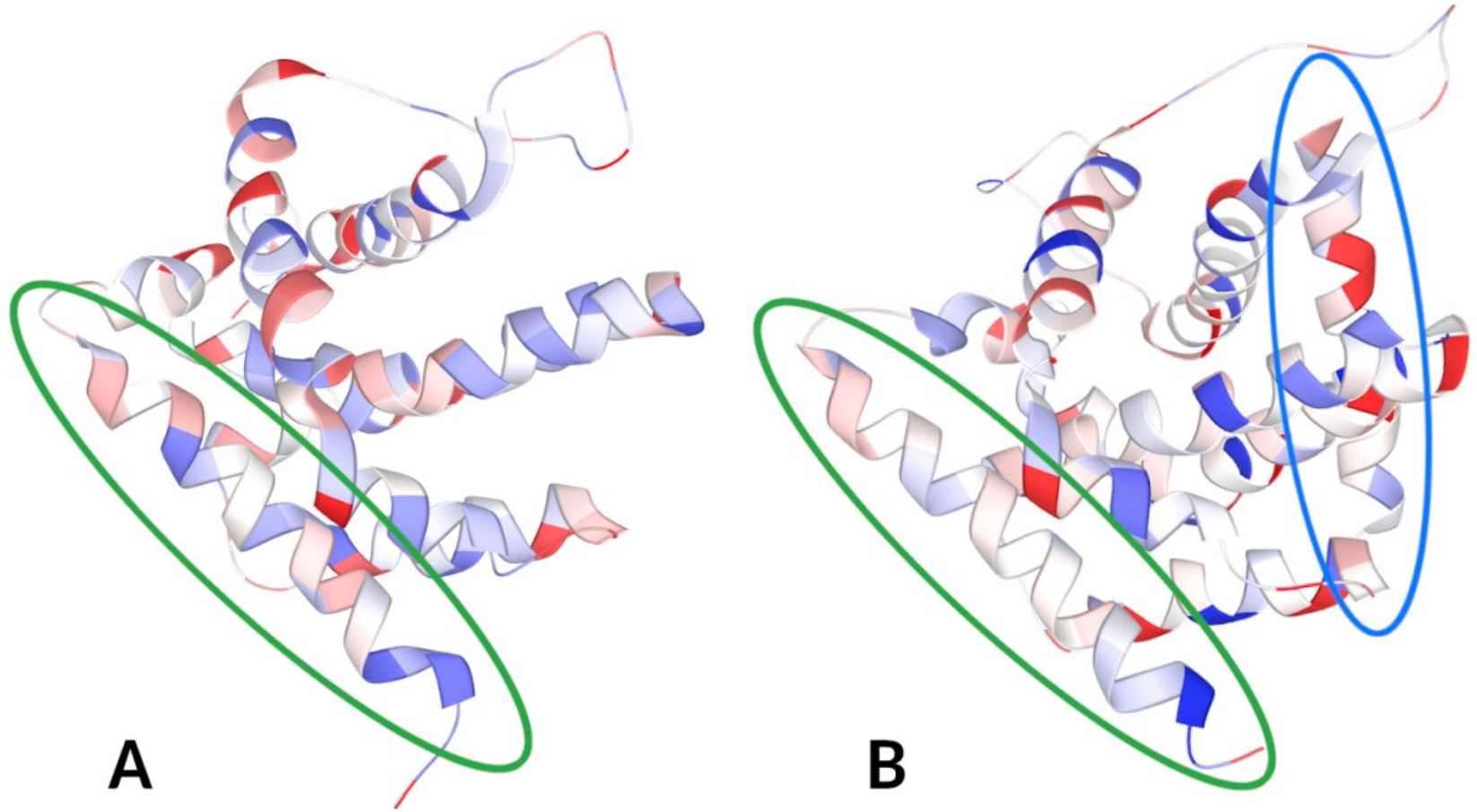
ACC II example 1: phenols



Partial atomic charges in propofol. The phenol hydrogen is marked with a blue arrow.

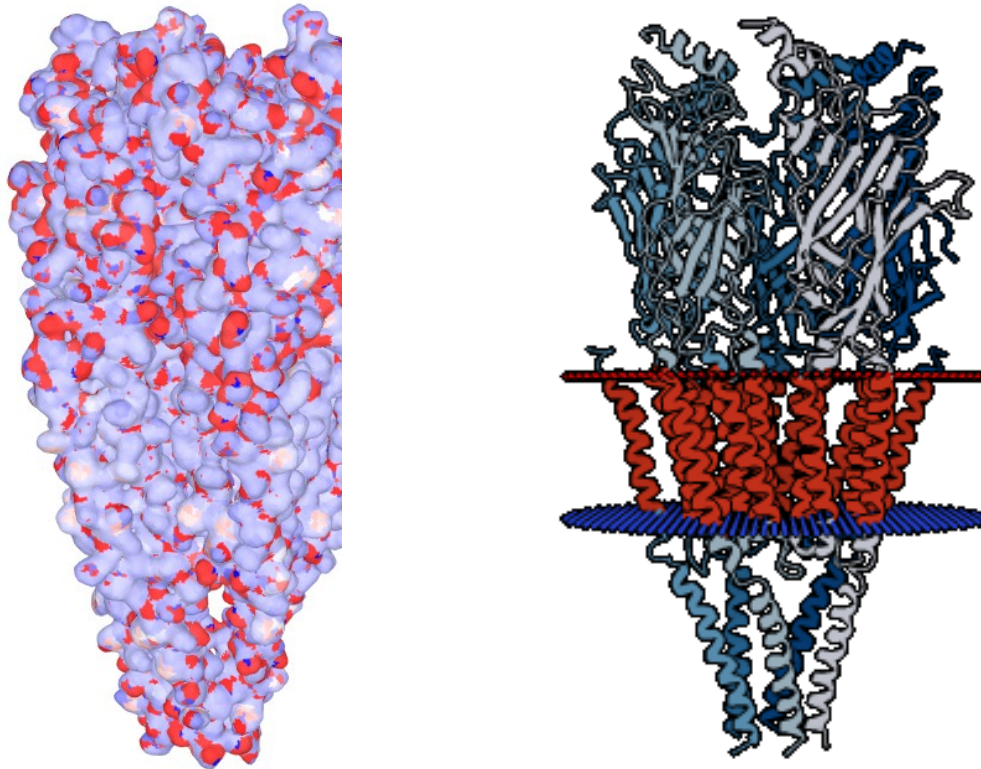
Svobodová, R., Geidl, S., Ionescu, C.M., Skřehota, O., Bouchal, T., Sehnal, D., Abagyan, R. and Koča, J., 2013. Predicting p K a values from EEM atomic charges. *Journal of cheminformatics*, 5(1), pp.1-15.

ACC II example 2: apoptotic protein BAX



(A) Inactive BAX (PDB ID 1f16). (B) Activated BAX (PDB ID 2k7w). An activator is marked with a blue oval, the C domain is marked with a green oval. The C domain of activated BAX is depolarized – it is mainly white or whitish in colour. This depolarization causes the C domain to be released and penetrate the mitochondrial membrane and initiate apoptosis.

ACC II example 3: membrane protein



Structure of nicotinic acetylcholine receptor (PDB ID 2bg9).
Nonpolar transmembrane part and polar surface of extracellular
and cytoplasmic parts

ACC II: How to use ACC II?

Molnupiravir

- Download 3D structure from PubChem
- Upload to ACC II
- Press **Compute charges**

Atomic Charge Calculator II

Atomic Charge Calculator II (ACC II) is an application for fast calculation of partial atomic charges. It features [20 empirical methods](#) along with parameters from literature. [Short introduction](#) covers the basic usage of ACC II. All methods and parameters are also available in a command-line [application](#) that can be used in user workflows.

Upload structure

Input file

Conformer3D_CID_145996610.sdf

Single sdf, mol2, pdb or mmCIF file or archive (zip, tar.gz) of those files. Maximum file size: 10 MB

ACC II: How to use ACC II?

Molnupiravir

Structure

145996610

View

Cartoon Balls and sticks Surface

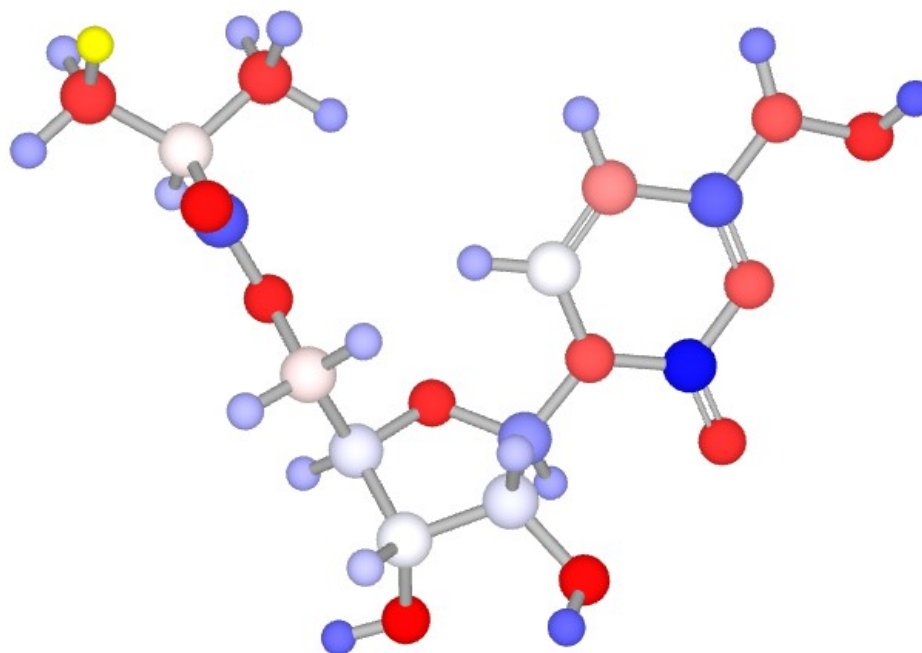
Coloring

Structure Charges (relative) Charges (absolute)

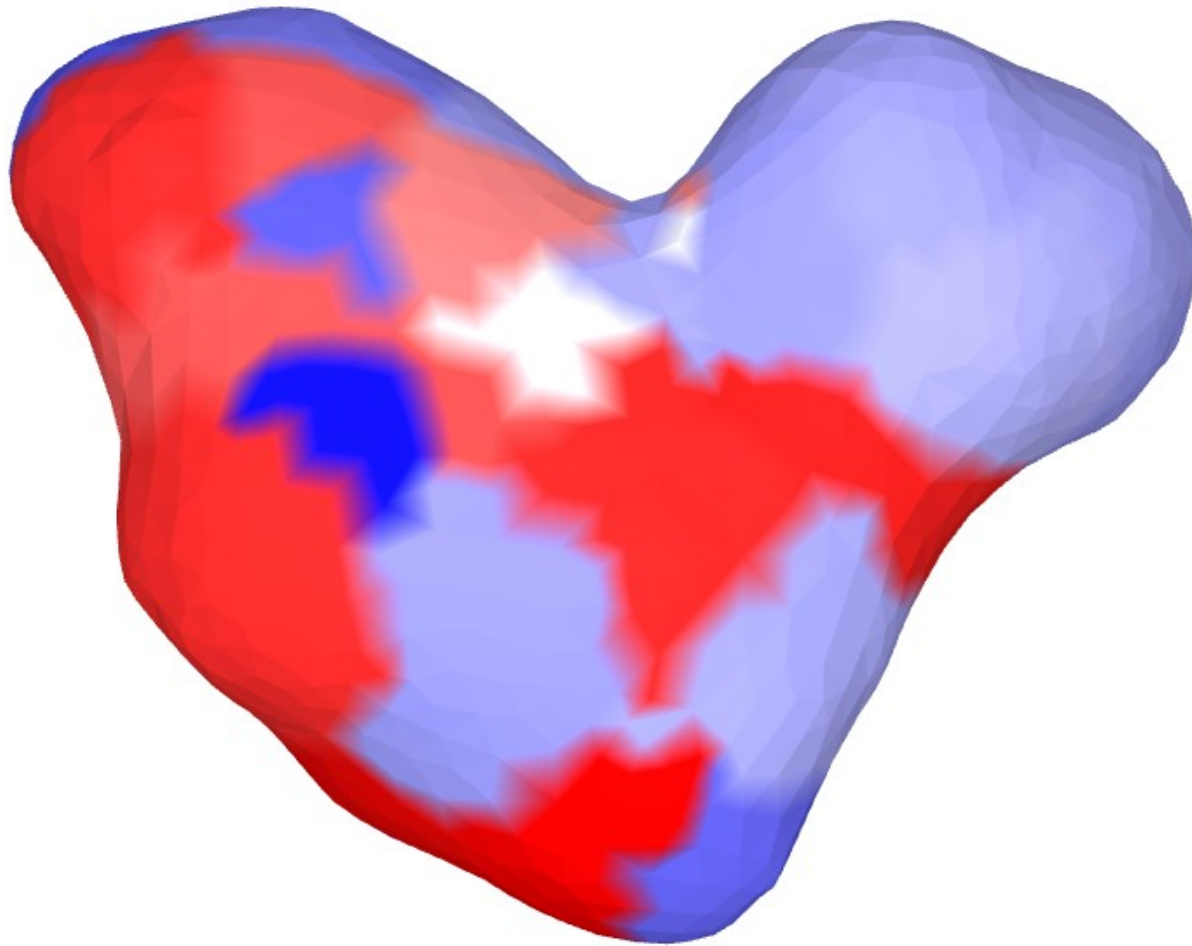
Min value: -0.66272

Max value: 0.66272

H H 34 at (-5.6, -2.8, -0.8) on UNK X 0 [145996610], Charge: 0.2624



ACC II: How to use ACC II? Molnupiravir



ACC II: How to use ACC II?


Atomic Charge Calculator II

Computation settings

Note that the list of methods and parameters shows only suitable combinations for given input structures. See the complete [list of parameters](#).

Method	Full name
QEq	Charge Equilibration
	Publication Rappe, A. K., & Goddard, W. A. (1991). Charge equilibration for molecular dynamics simulations. The Journal of Physical Chemistry, 95(8), 3358–3363. doi:10.1021/j100161a070
3D	
EEM	
SFKEEM	
QEq	Publication Rappe, A. K., & Goddard, W. A. (1991). Charge equilibration for molecular dynamics simulations. The Journal of Physical Chemistry, 95(8), 3358–3363. doi:10.1021/j100161a070
EQeq	
EQeq+C	
GDAC	
SQE	
SQE+q0	
SQE+qp	
2D	
PEOE	
MPEOE	
MGC	
KCM	
DENR	
TSEF	
Charge2	
VEEM	

[Back to main page](#)



services provided by ELIXIR – European research infrastructure for biological information. For other services provided by ELIXIR's Czech Republic Node visit www.elixir-czech.cz/services.

of Act No. 130/2002 Coll. The owner of the software is Masaryk University, a public university, ID: 00216224. Masaryk individuals to use this software free of charge and without territorial restrictions in usual way, that does not depreciate its duration of property rights. This software is not subject to special information treatment according to Act No. 412/2005 will use the software under this licence offer violates the licence terms, the permission to use the software terminates.

Atomic Charge Calculator II

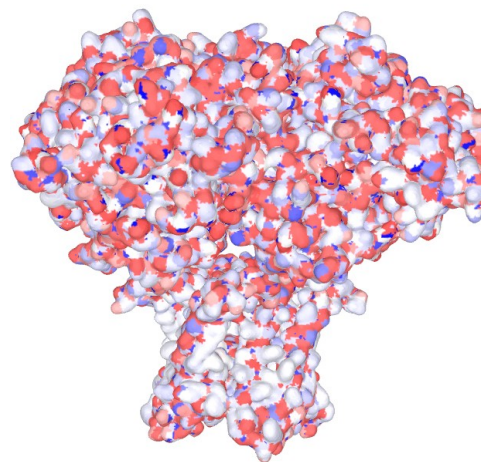
Impact

Publications:

- Ionescu, C.M., Sehnal, D., Falginella, F.L., Pant, P., Pravda, L., Bouchal, T., Svobodová, R., Geidl, S. and Koča, J., 2015. *AtomicChargeCalculator: interactive web-based calculation of atomic charges in large biomolecular complexes and drug-like molecules*. **Journal of cheminformatics**, 7(1), pp.1-13.
- Raček, T., Schindler, O., Toušek, D., Horský, V., Berka, K., Koča, J. and Svobodová, R., 2020. *Atomic Charge Calculator II: web-based tool for the calculation of partial atomic charges*. **Nucleic acids research**, 48(W1), pp.W591-W596.

Users:

300 unique users / year
5000 computations



Atomic Charge Calculator II

Future plans

- **Develop methodology, covering whole PDB**
 - Automatic adding of hydrogens
 - Prediction of total charge based on pH
- **Integrate into PDBe-KB and PDBe**



Acknowledgement

Jaroslav Koča

Tomáš Raček, Ondřej Schindler, Vladimír Horský

David Sehnal, Stanislav Geidl, Crina-Maria Ionescu

Aleksandra Maršavelski

Karel Berka

ELIXIR and ELIXIR CZ

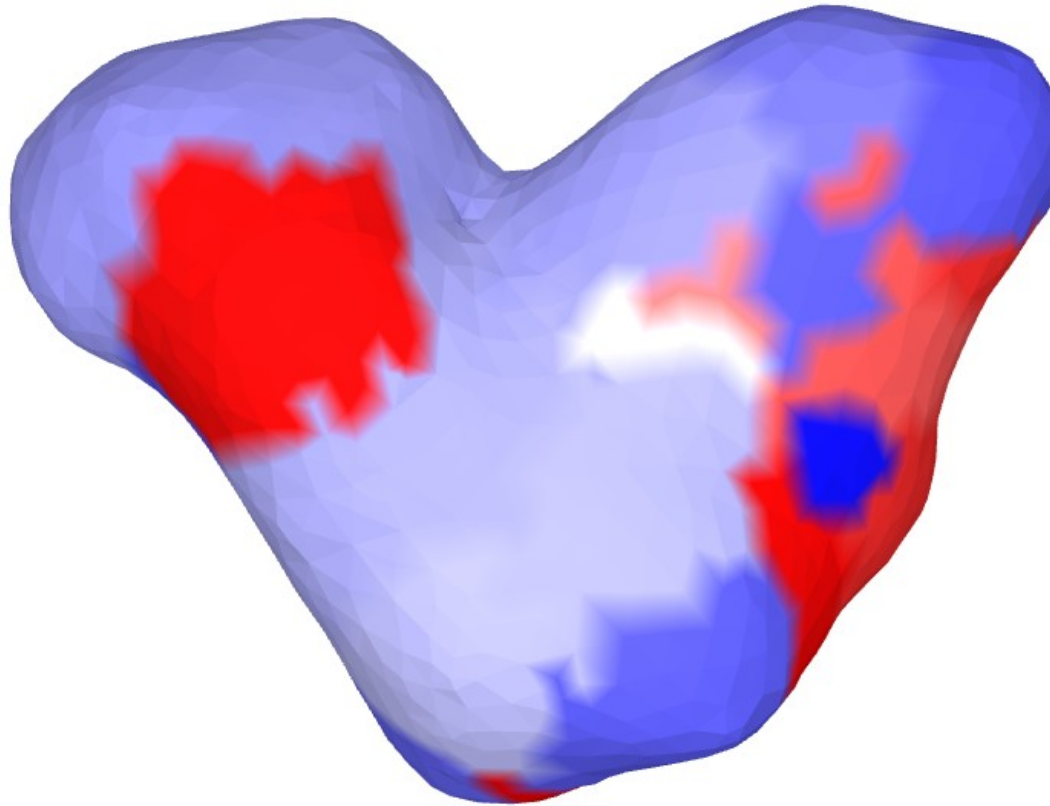


MetaCenter



EMBL-EBI, PDBe: Dr. Sameer Velankar





Thank you for your attention