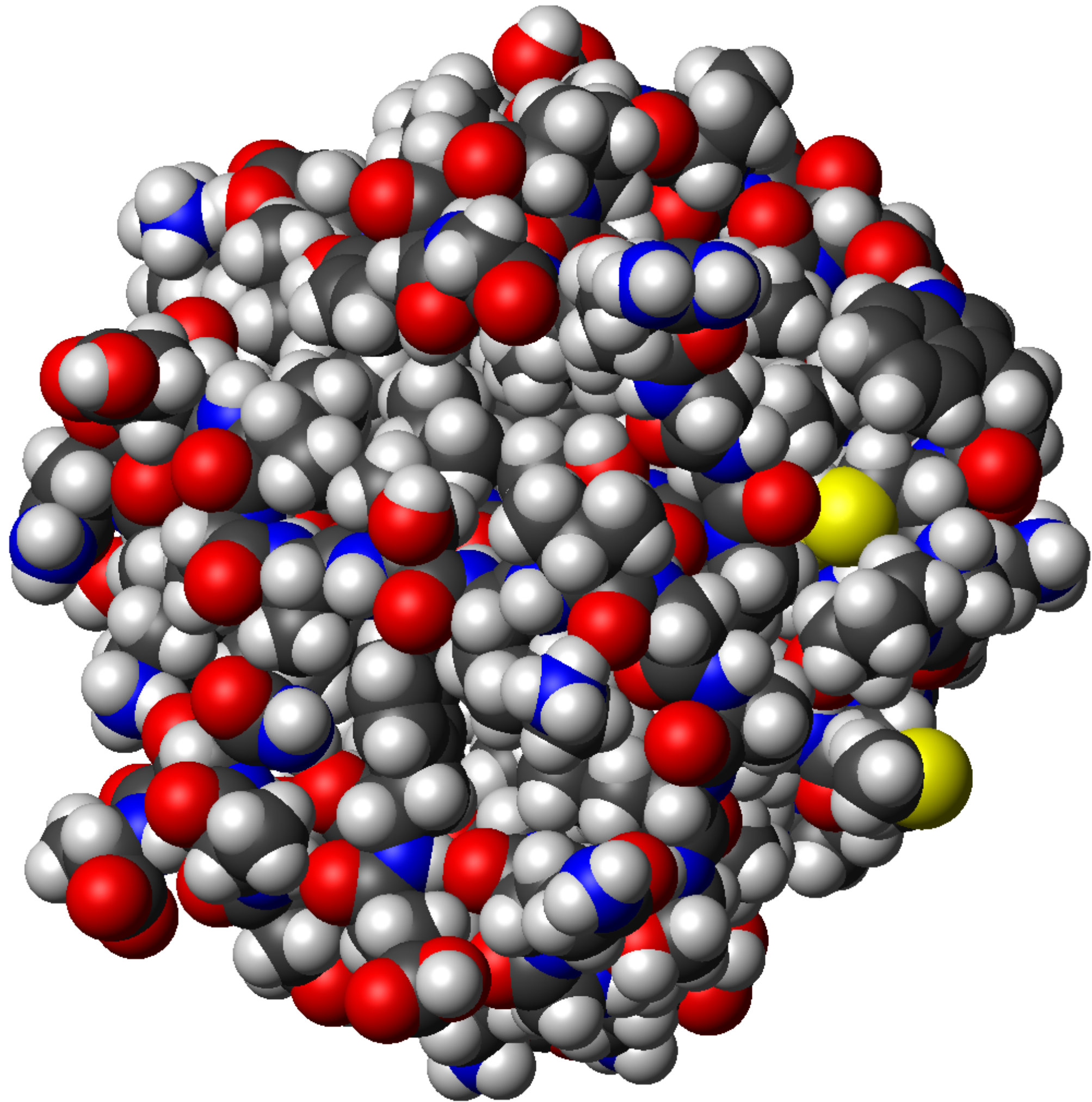
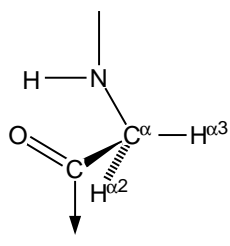
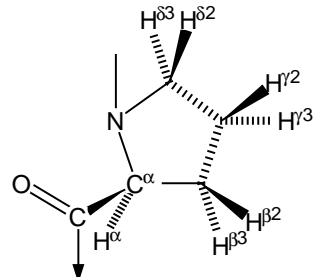


STRUKTURA PROTEINŮ

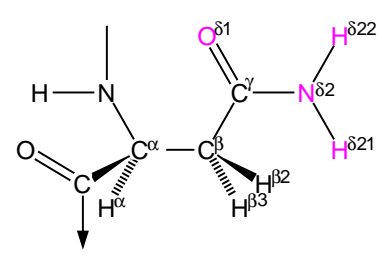




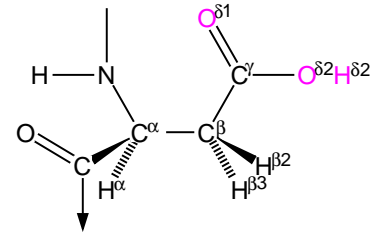
Gly (G)



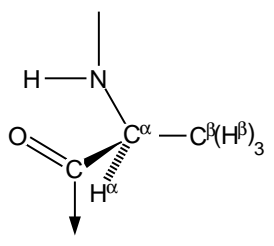
Pro (P)



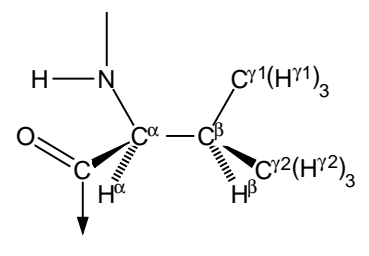
Asn (N)



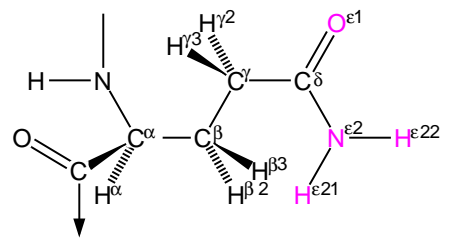
Asp (D)



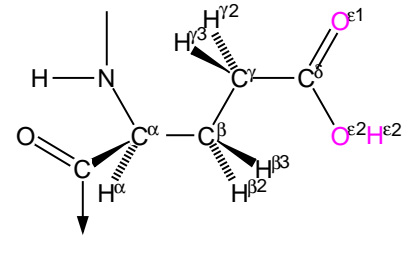
Ala (A)



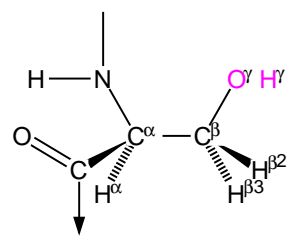
Val (V)



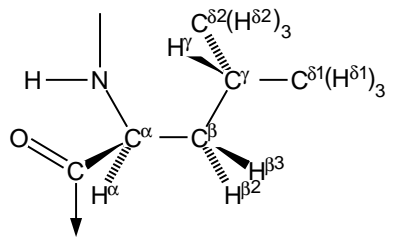
Gln (Q)



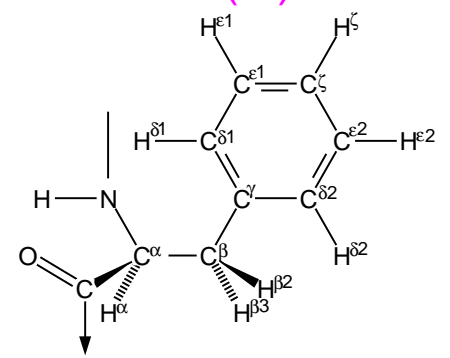
Glu (E)



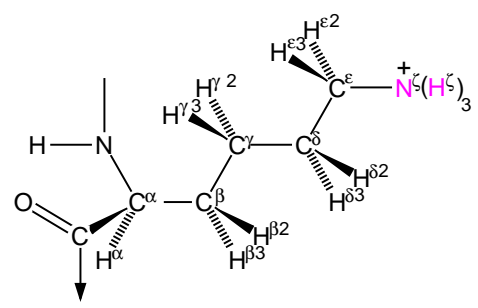
Ser (S)



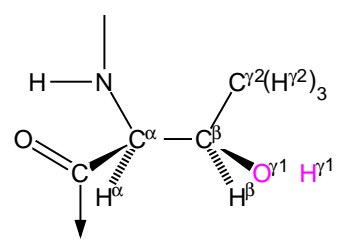
Leu (L)



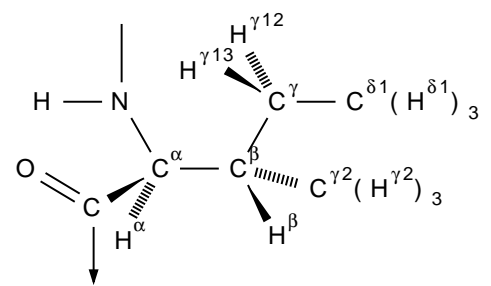
Phe (F)



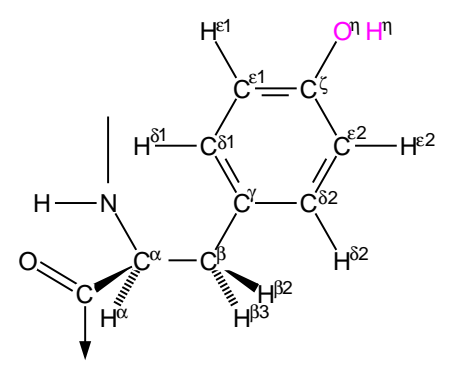
Lys (K)



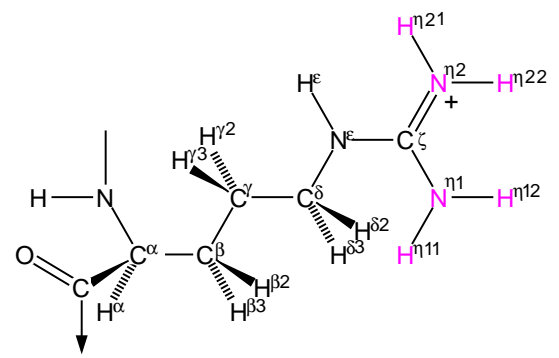
Thr (T)



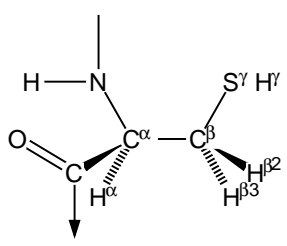
Ile (I)



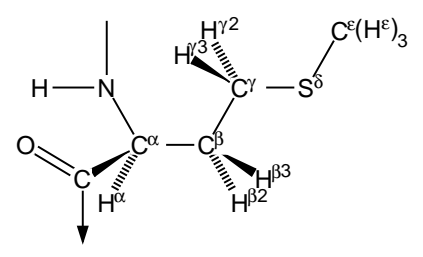
Tyr (Y)



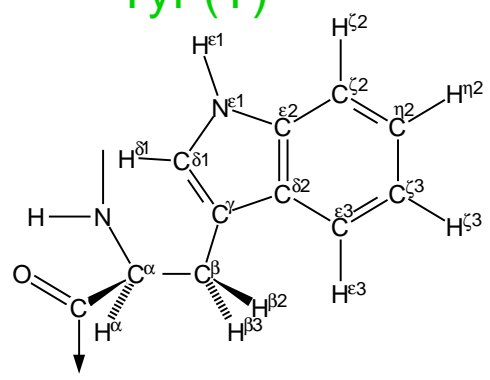
Arg (R)



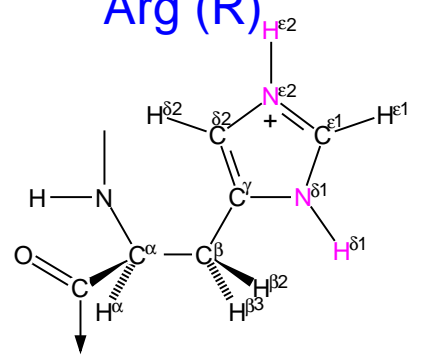
Cys (C)



Met (M)

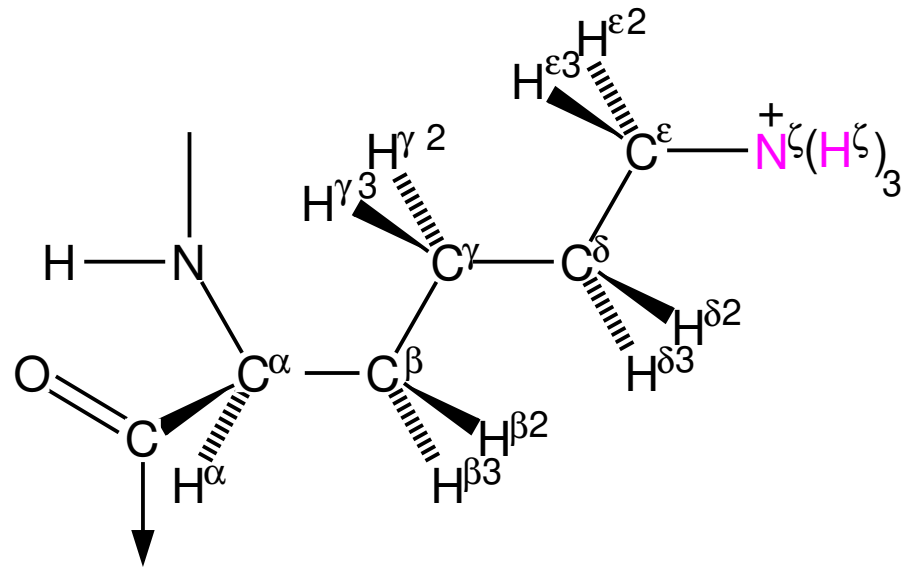


Trp (W)

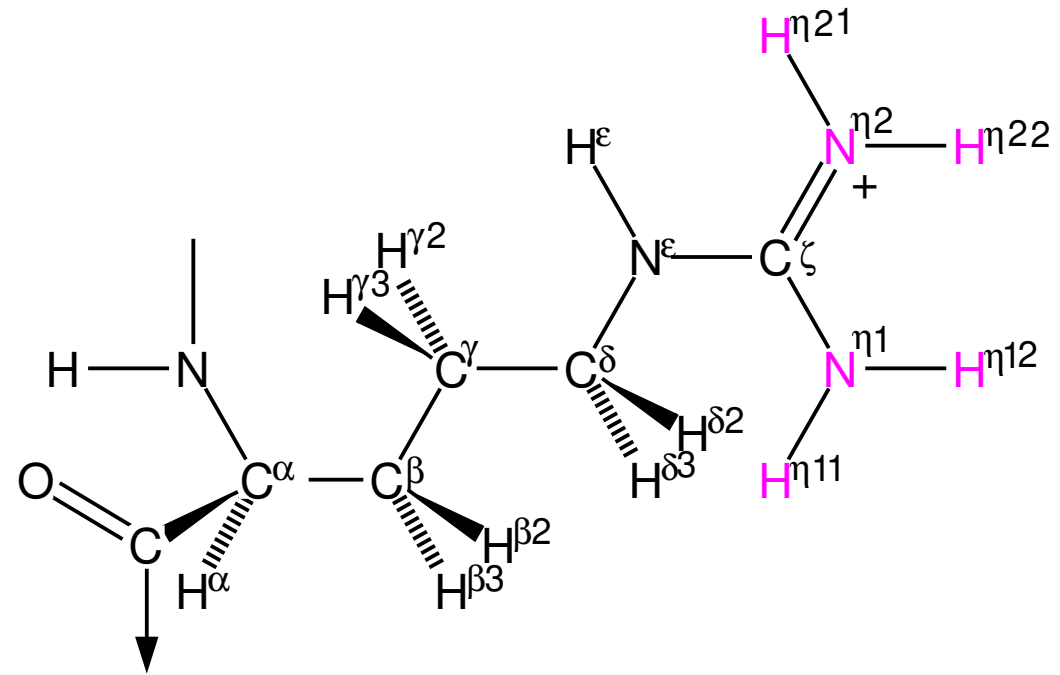


His (H)

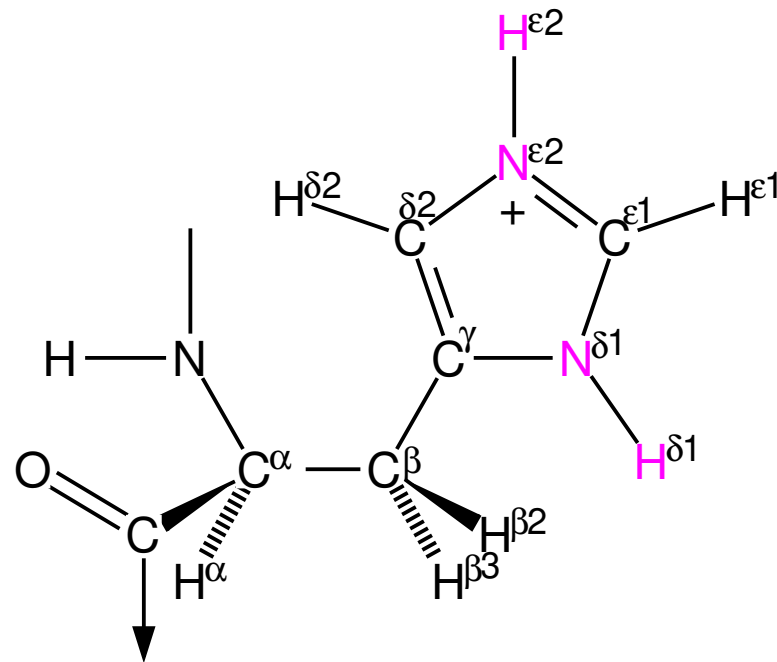
Kladný náboj



Lys (K)

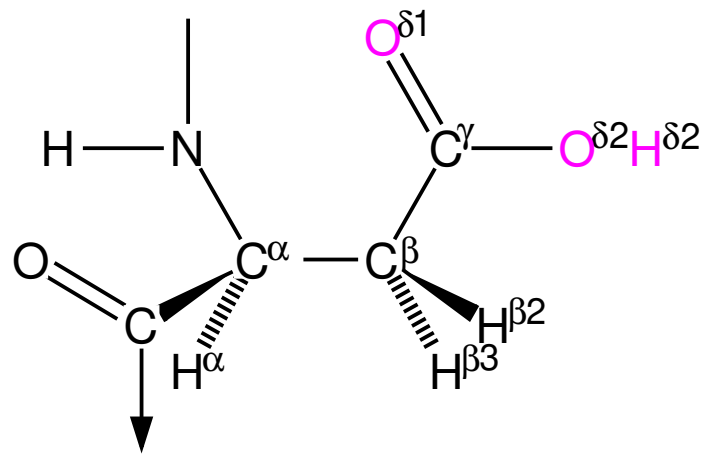


Arg (R)

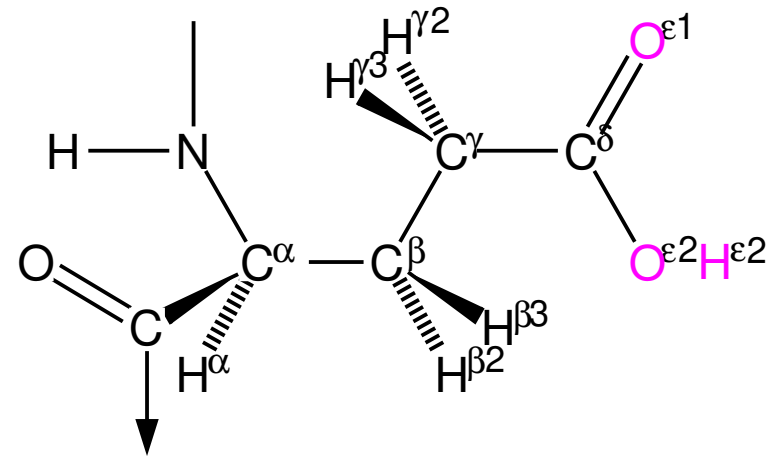


His (H)

Záporný náboj

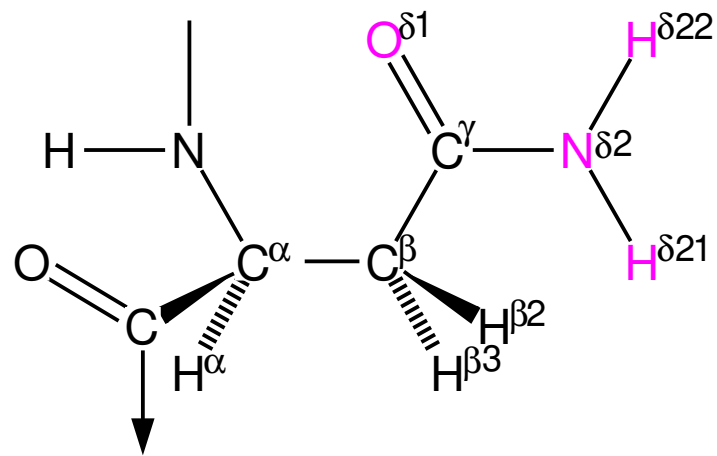


Asp (D)

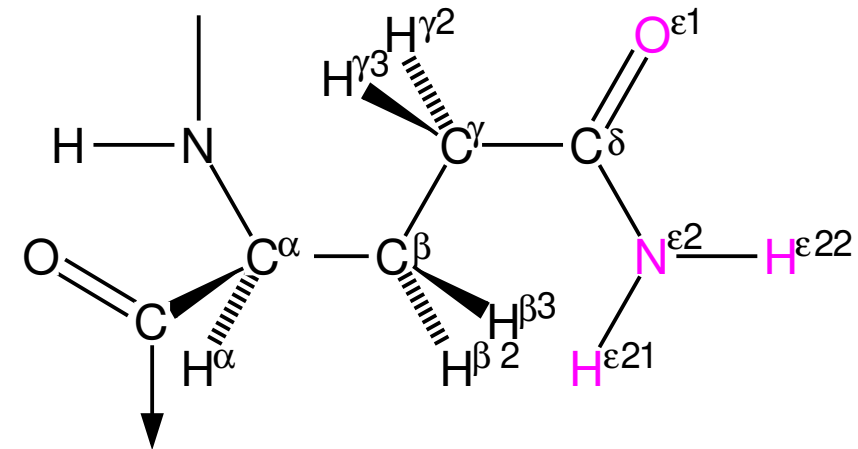


Glu (E)

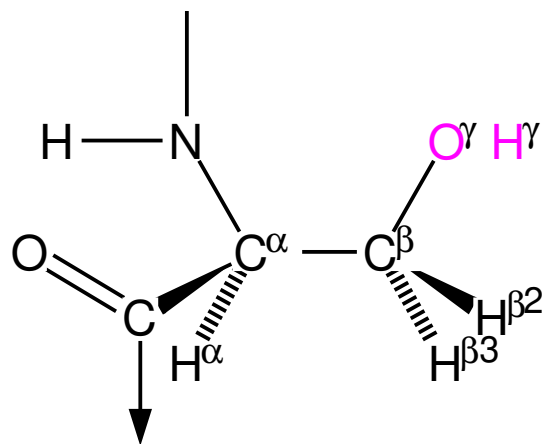
Vodíkové vazby také



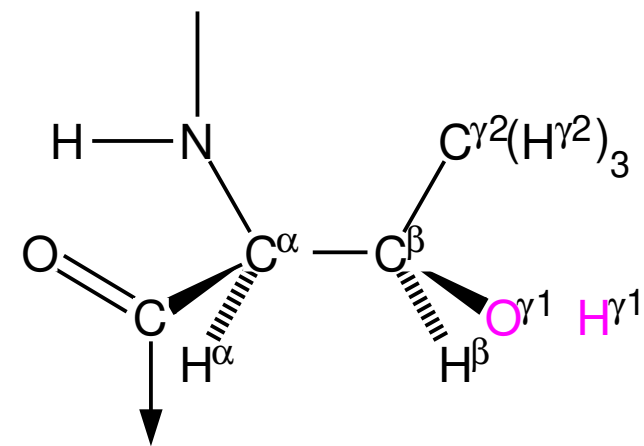
Asn (N)



Gln (Q)

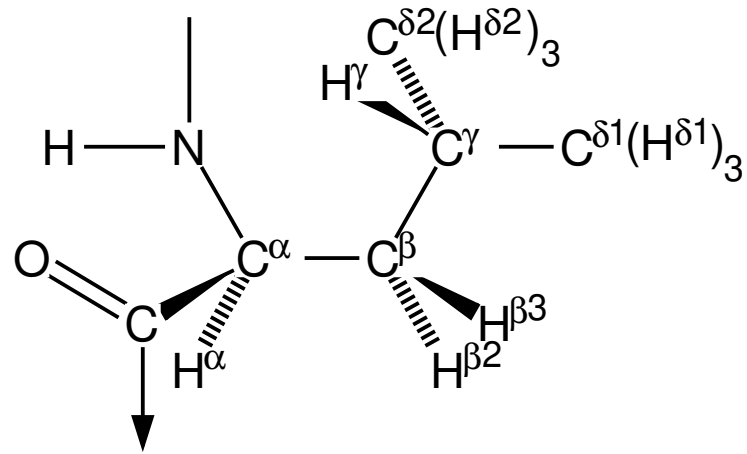


Ser (S)

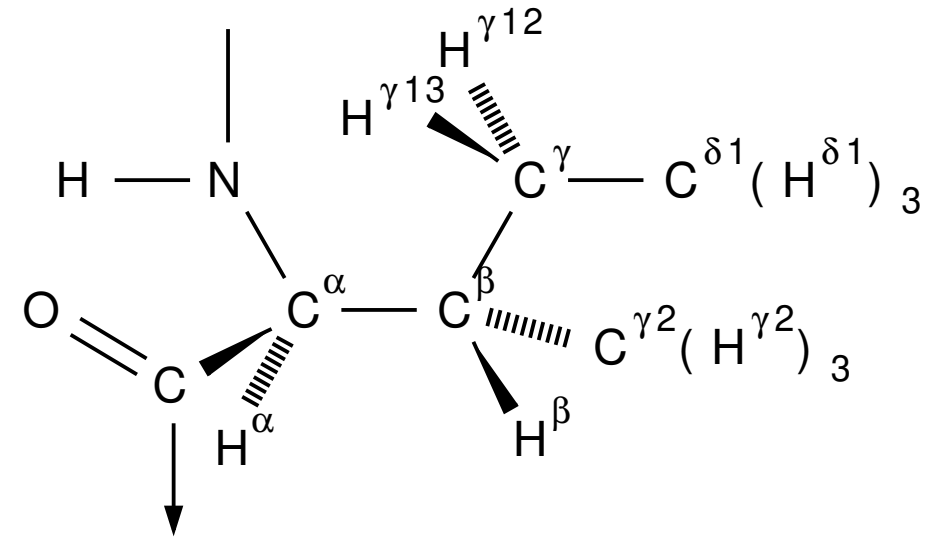


Thr (T)

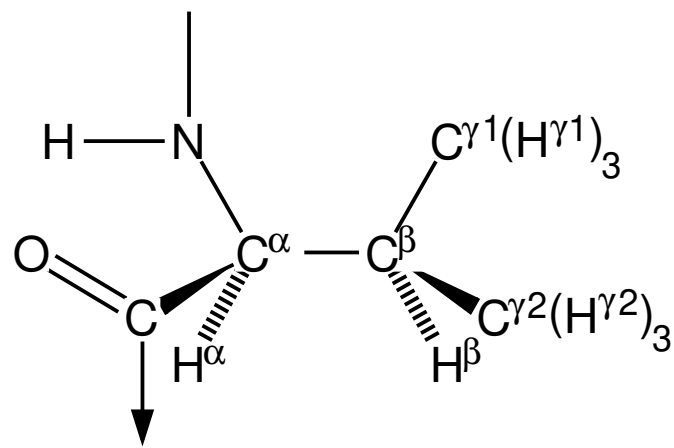
Silně hydrofobní (alifatické)



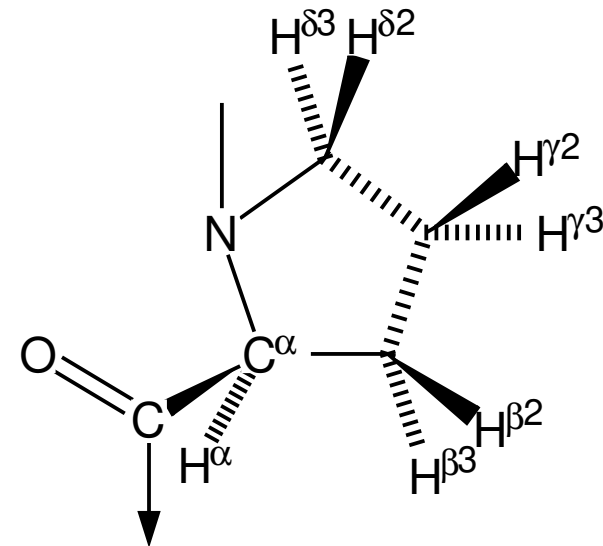
Leu (L)



Ile (I)

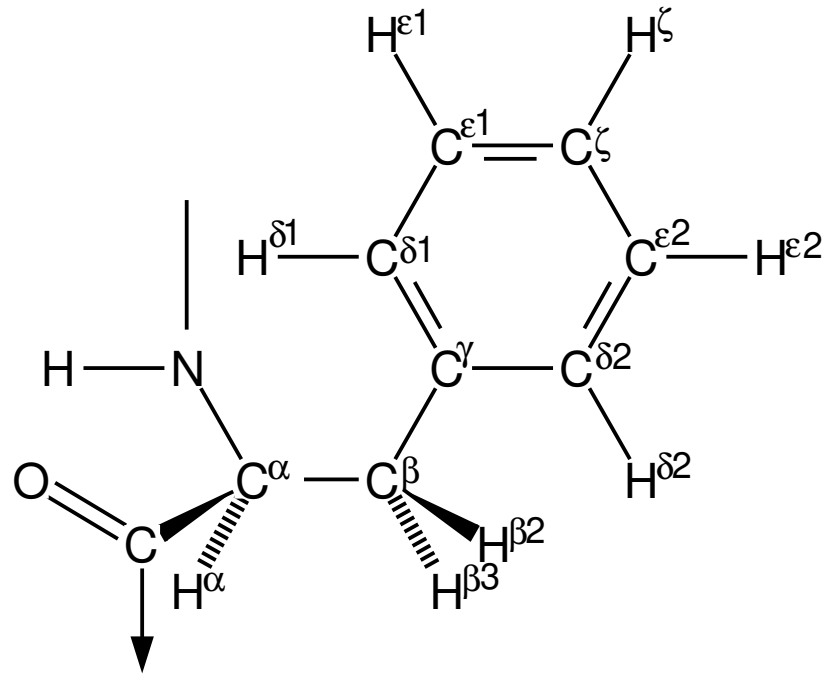


Val (V)

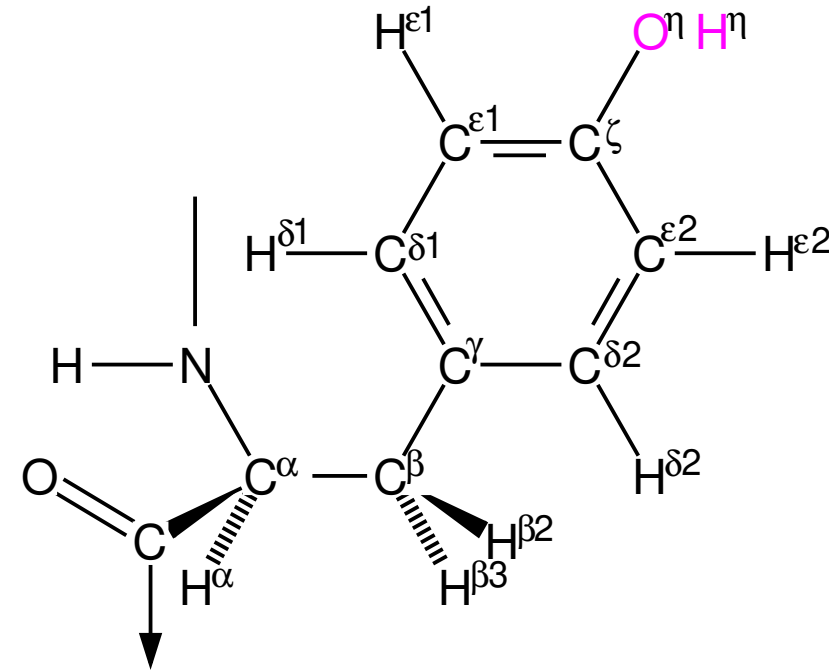


Pro (P)

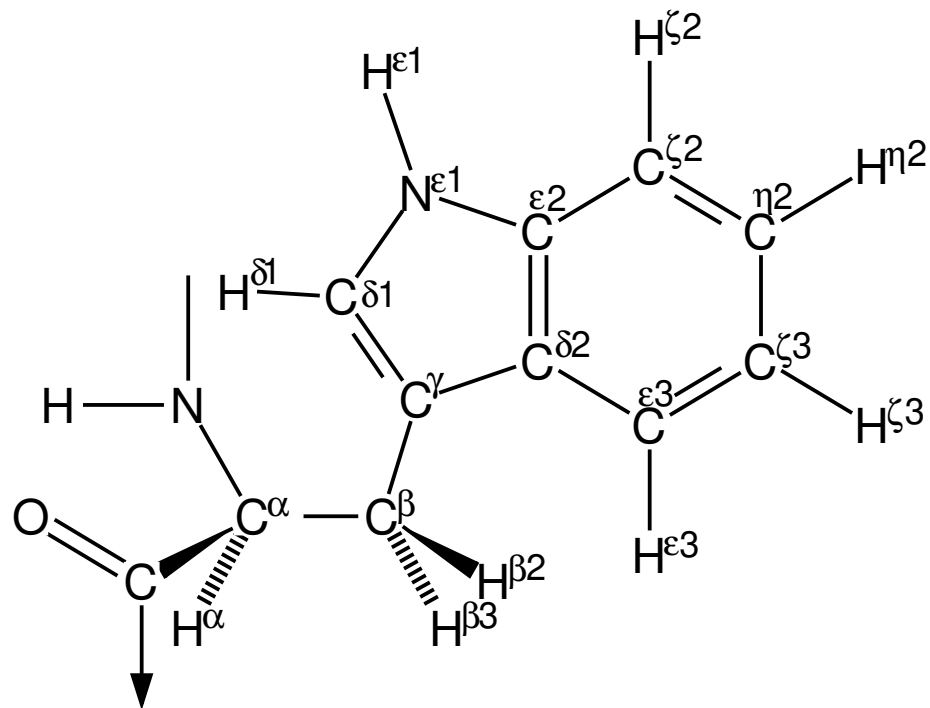
Silně hydrofobní (aromatické a sirné)



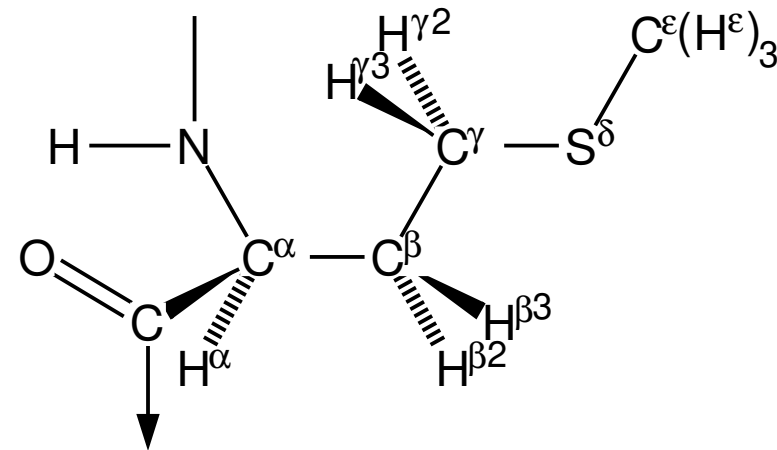
Phe (F)



Tyr (Y)

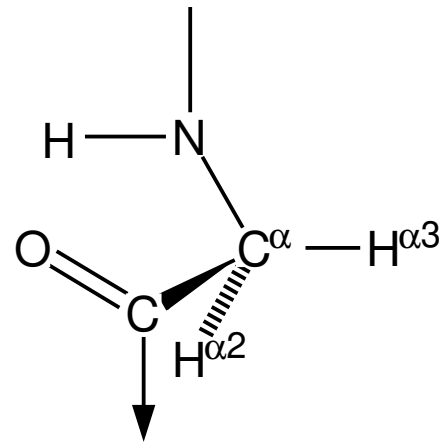


Trp (W)

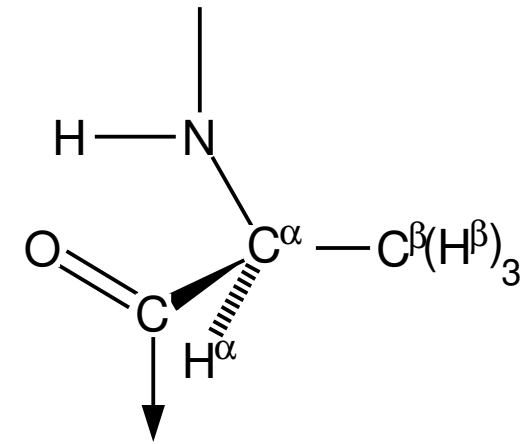


Met (M)

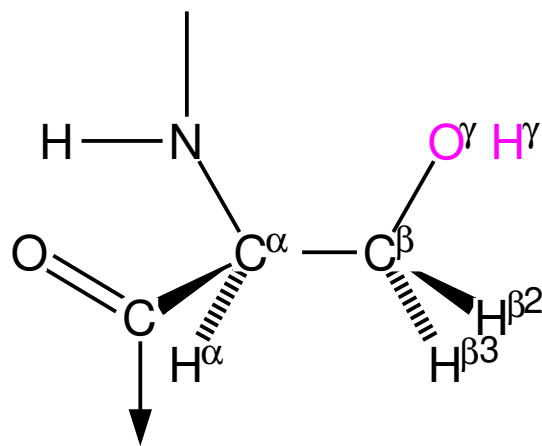
Malé



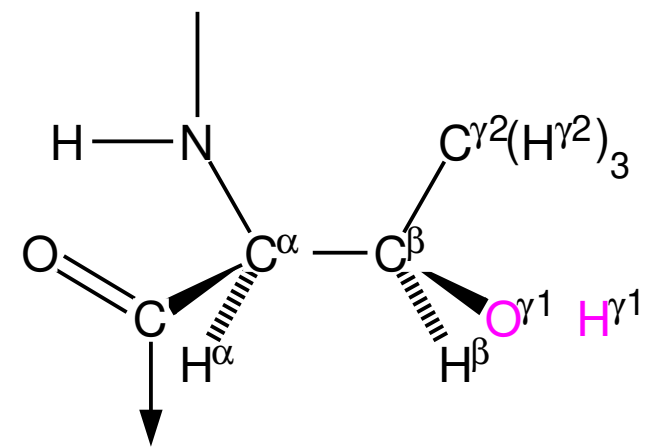
Gly (G)



Ala (A)

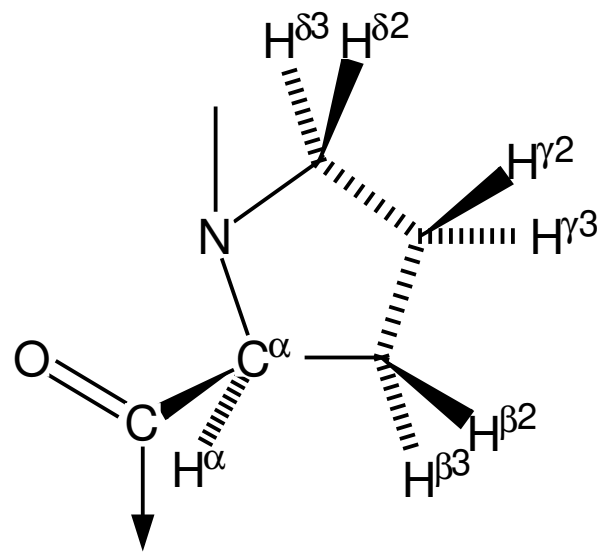


Ser (S)



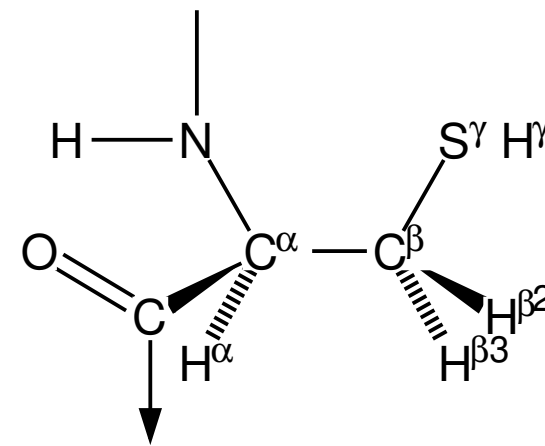
Thr (T)

Cyklický

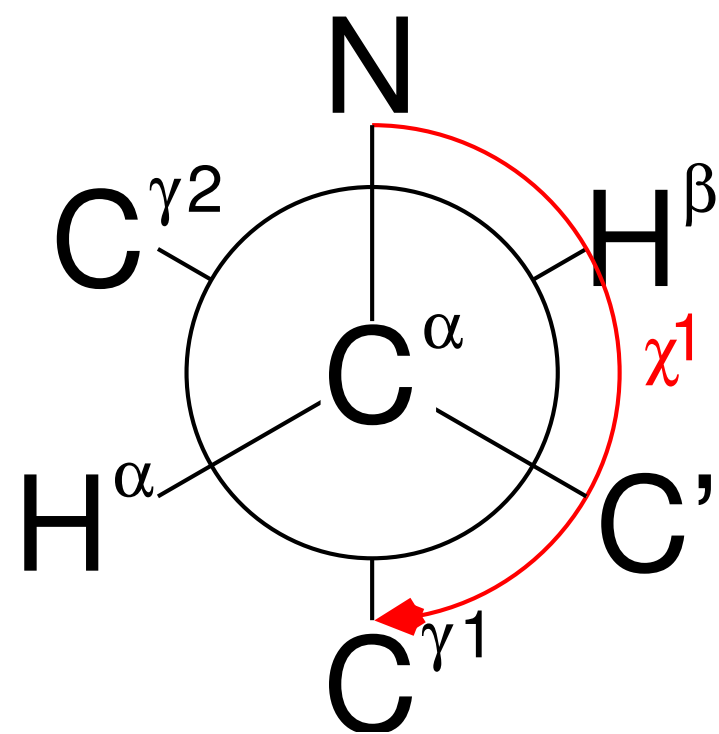
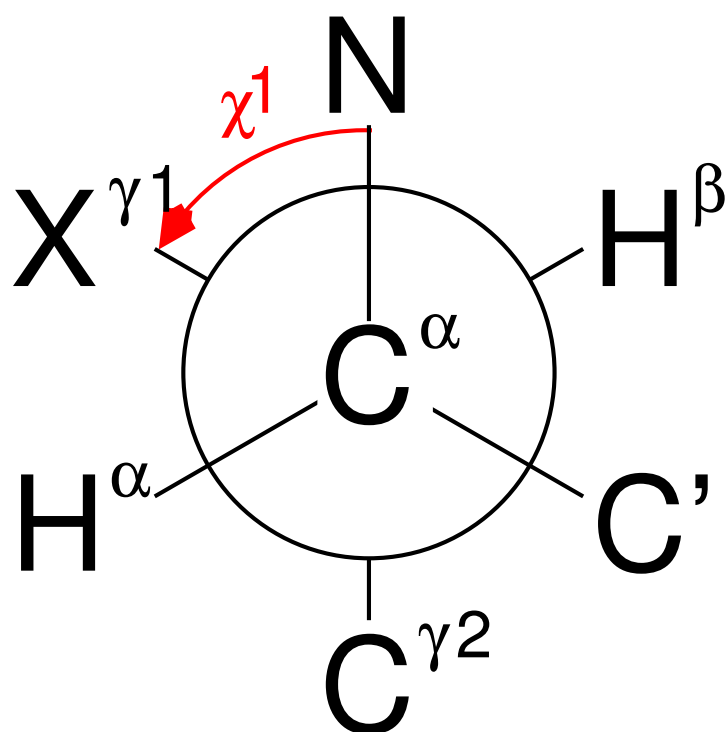
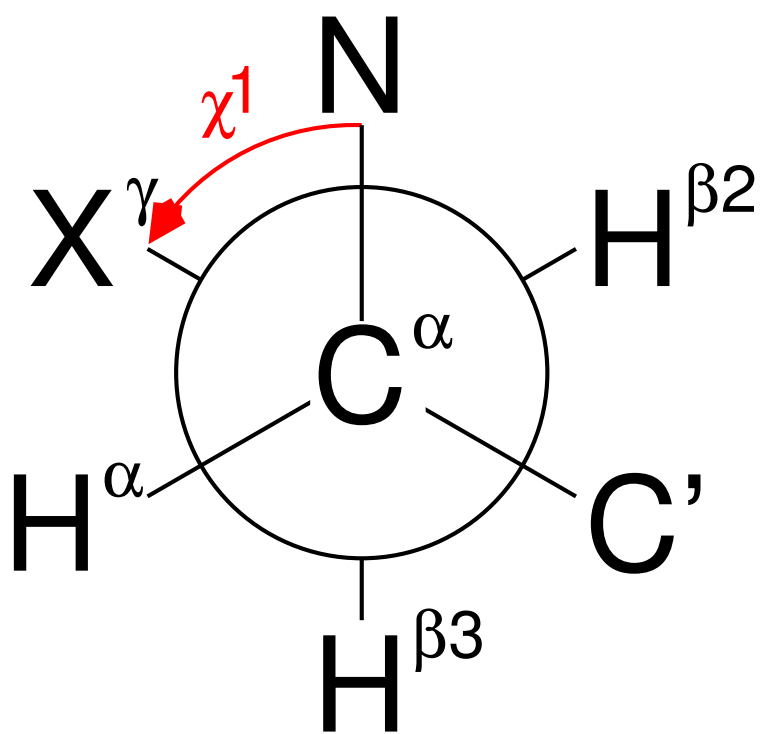
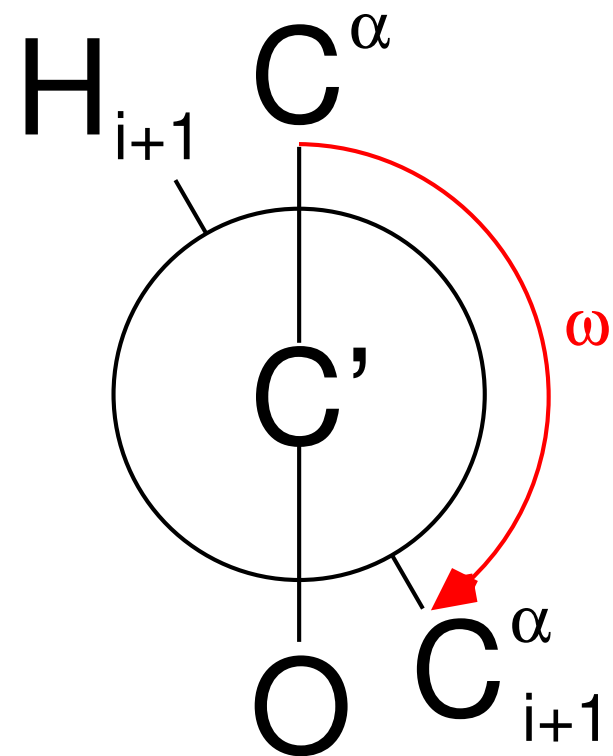
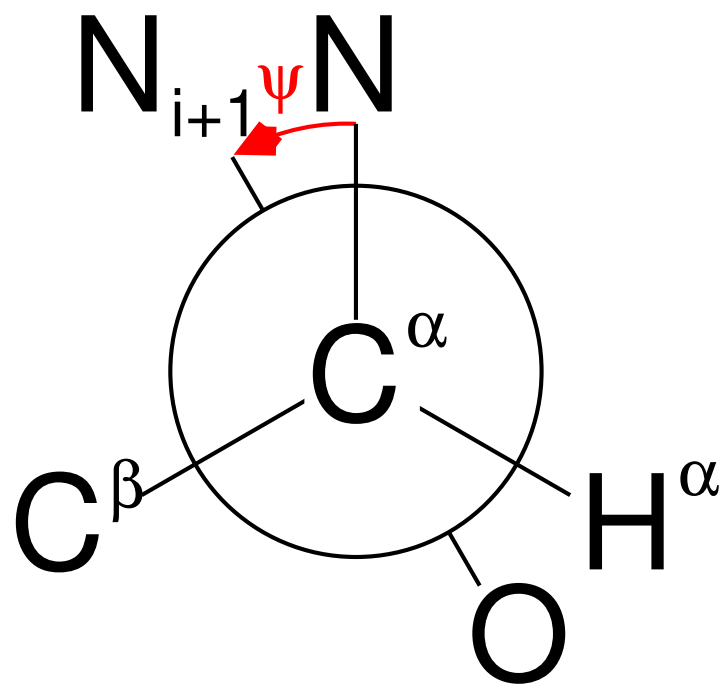
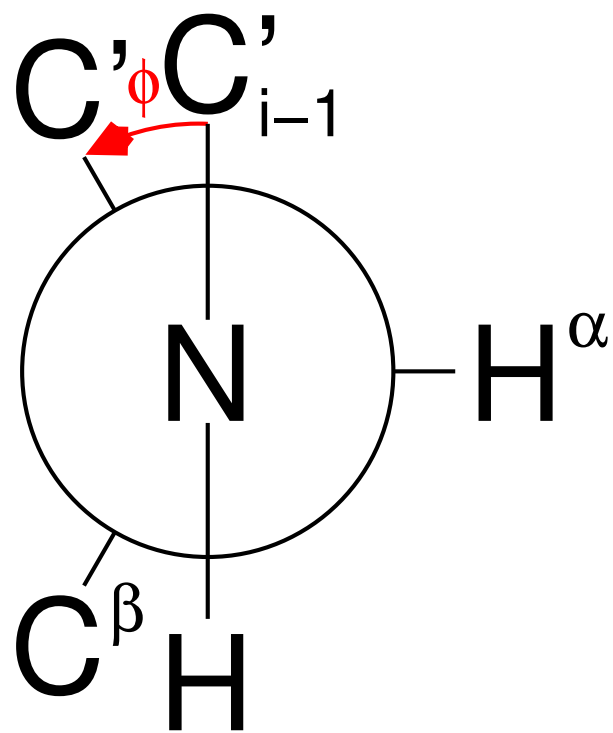


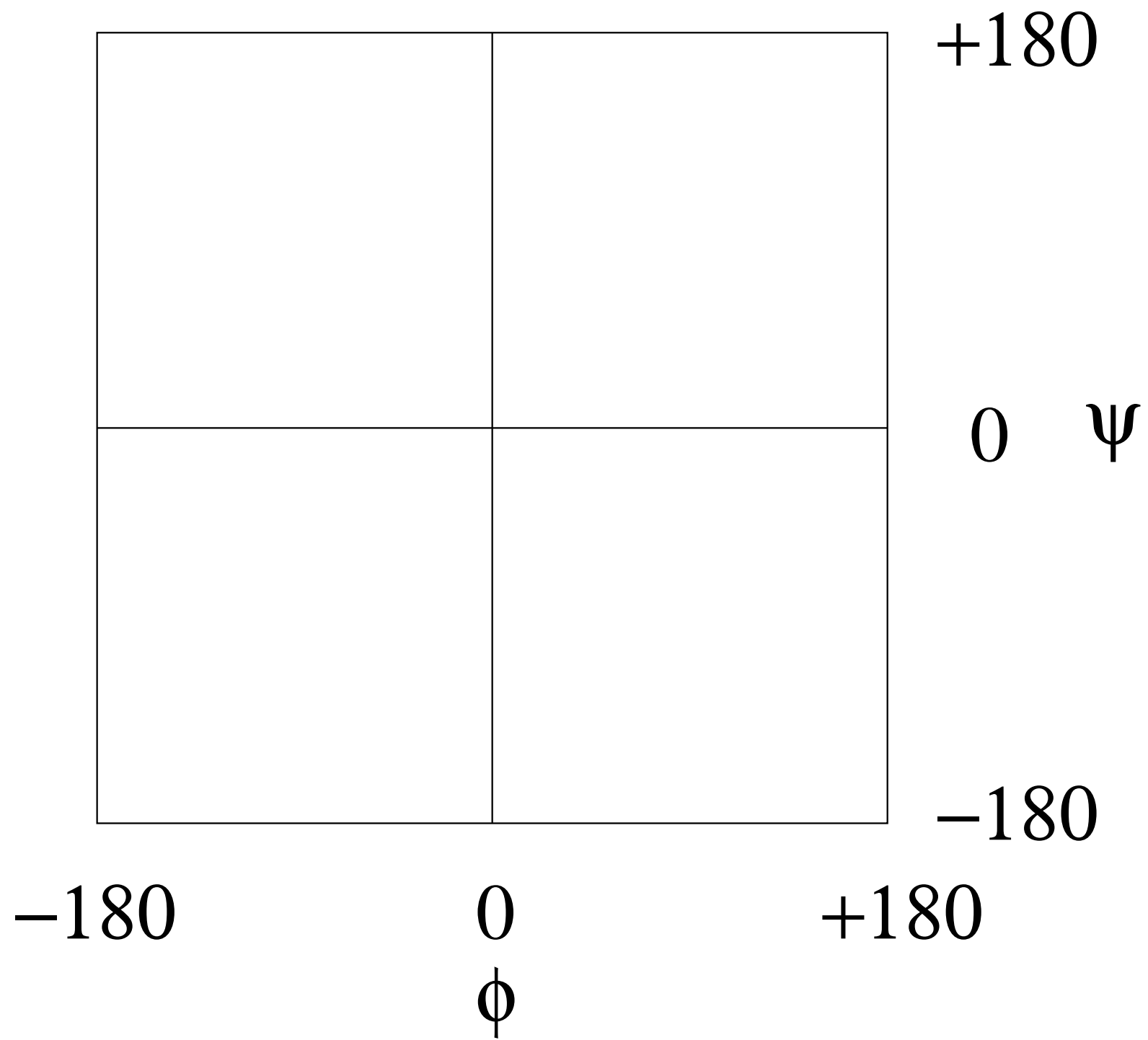
Pro (P)

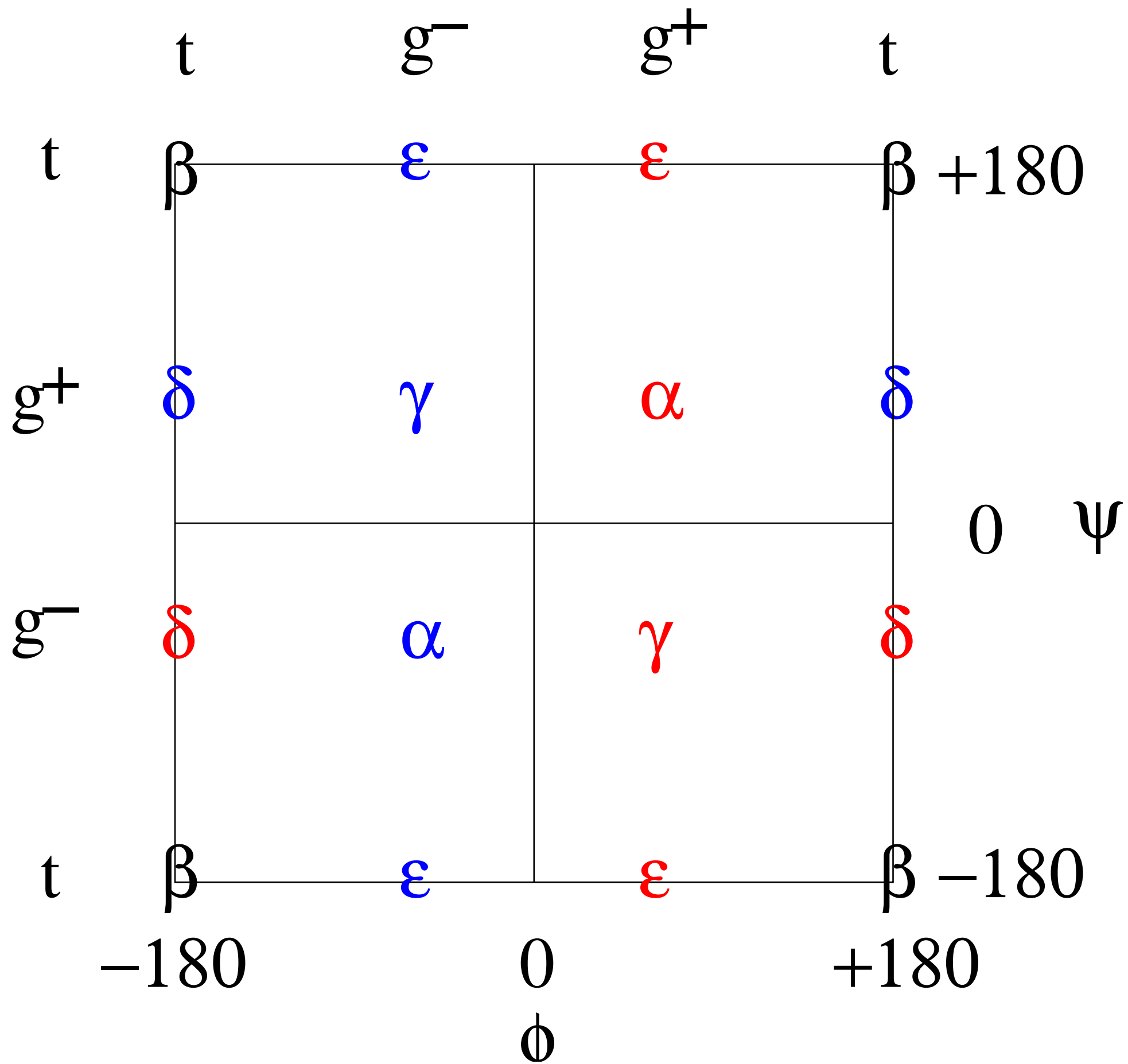
Disulfidové vazby

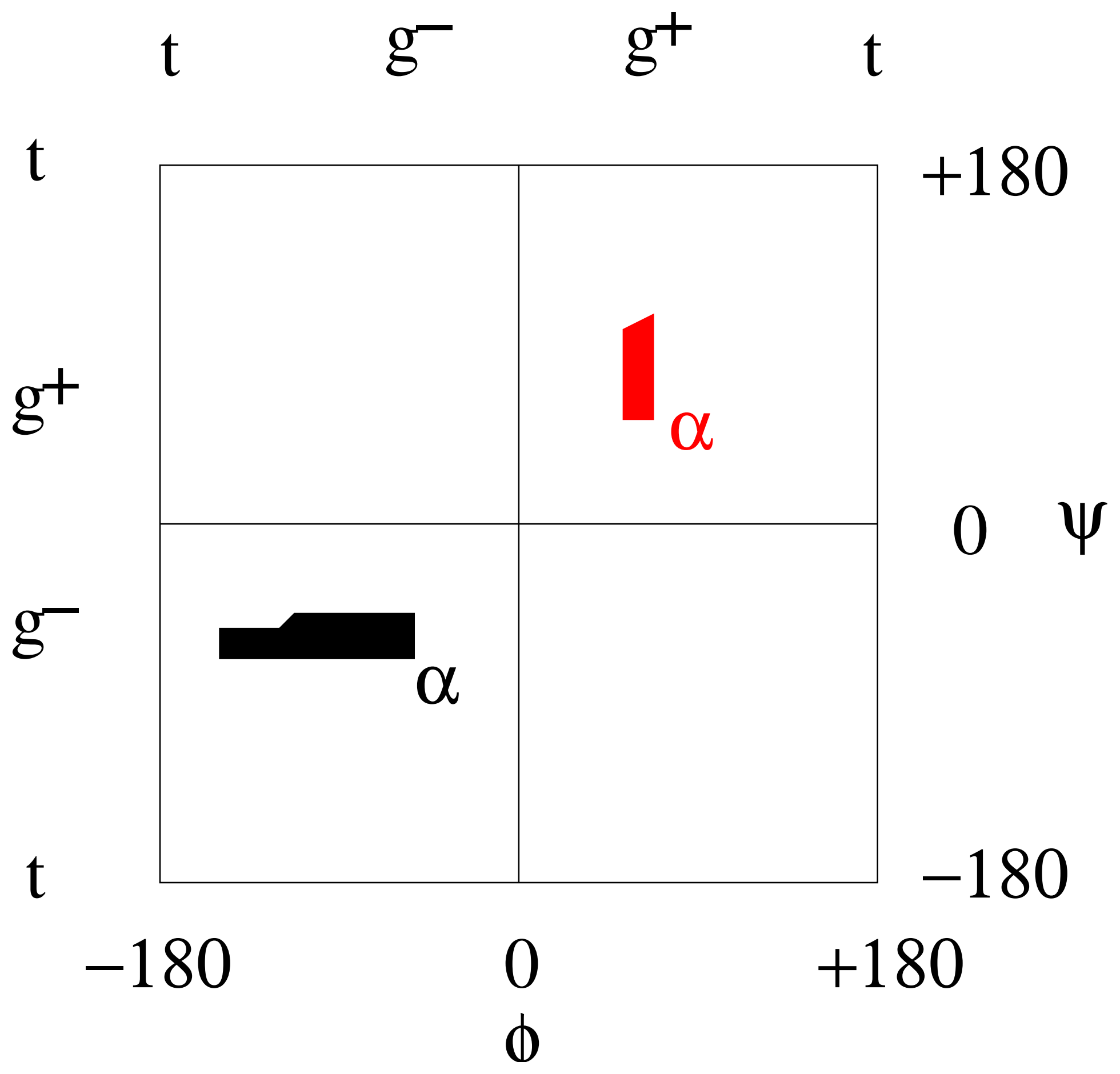


Cys (C)





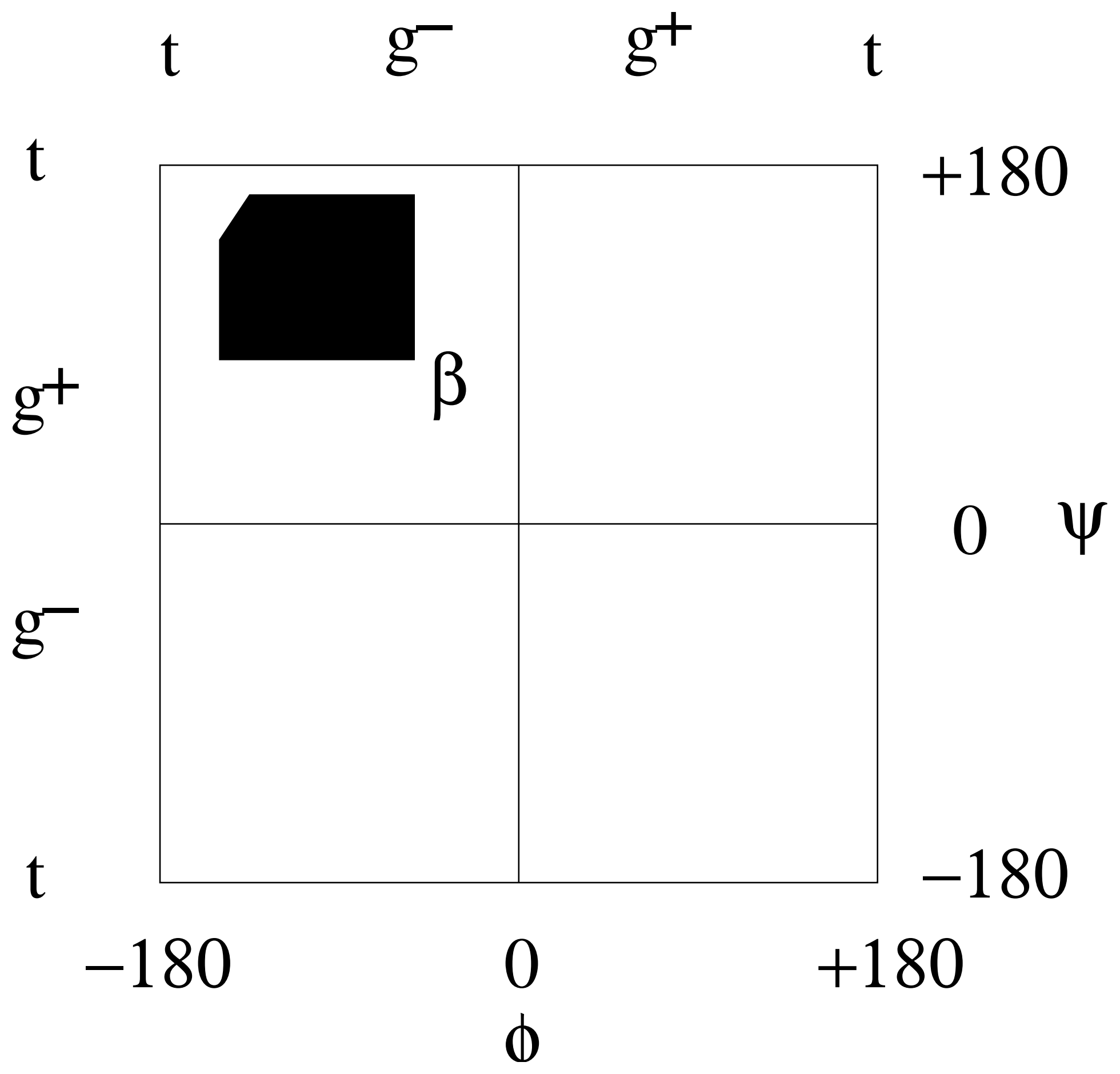




α -šroubovice

3₁₀-šroubovice

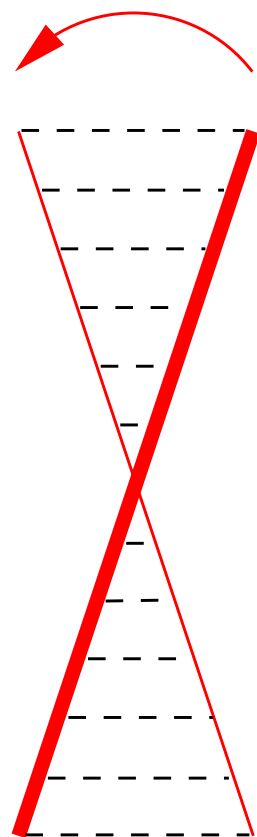
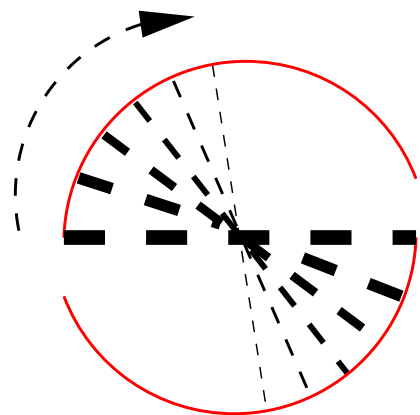
π -šroubovice



antiparalelní β -list

paralelní β -list

thioredoxin



— Polypeptidové vlákno
- - - - - Vodíková vazba

inverzní γ -ohyb

inverzní γ -ohyb

reverzní I'-ohyb

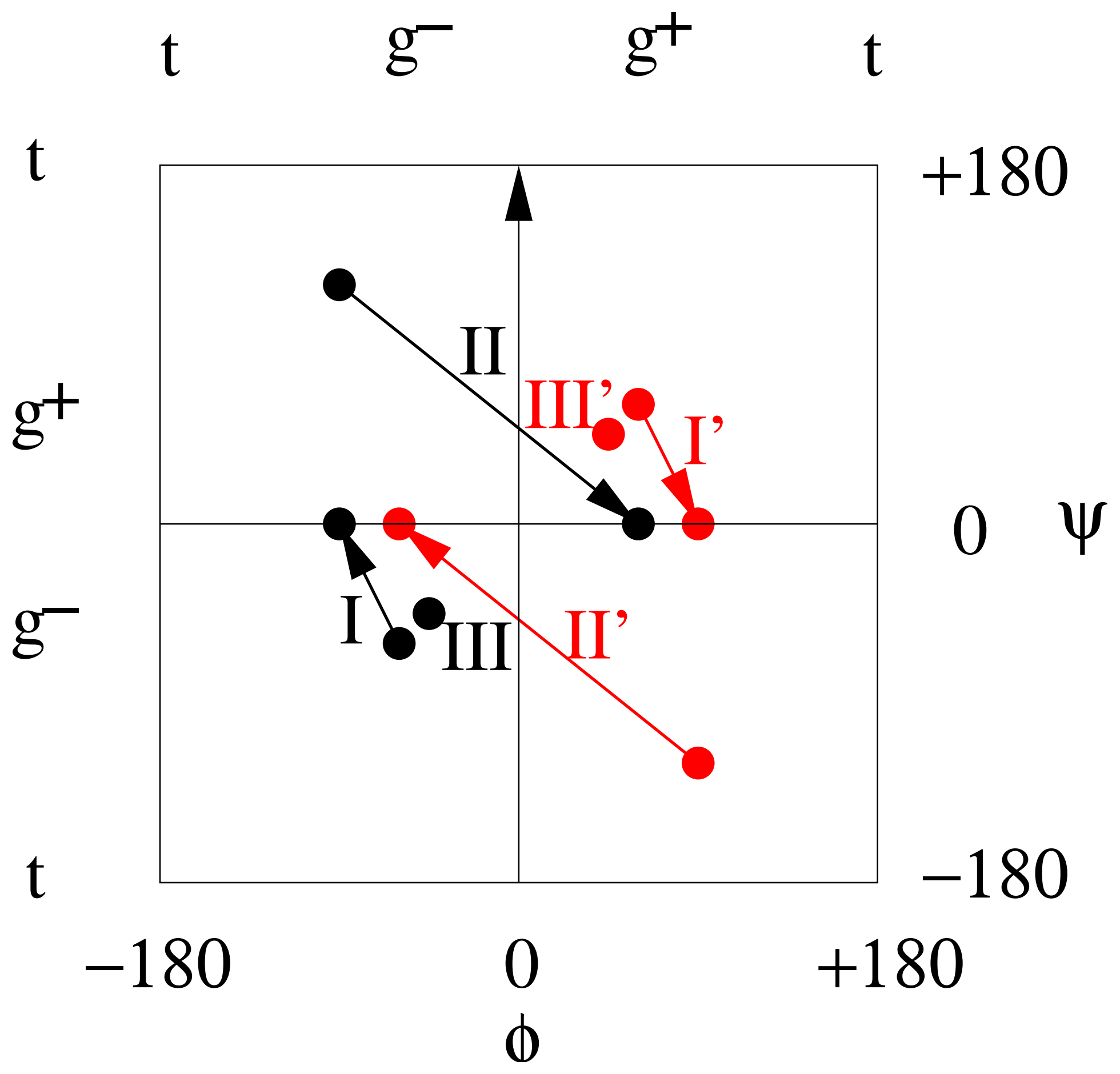
reverzní II'-ohyb

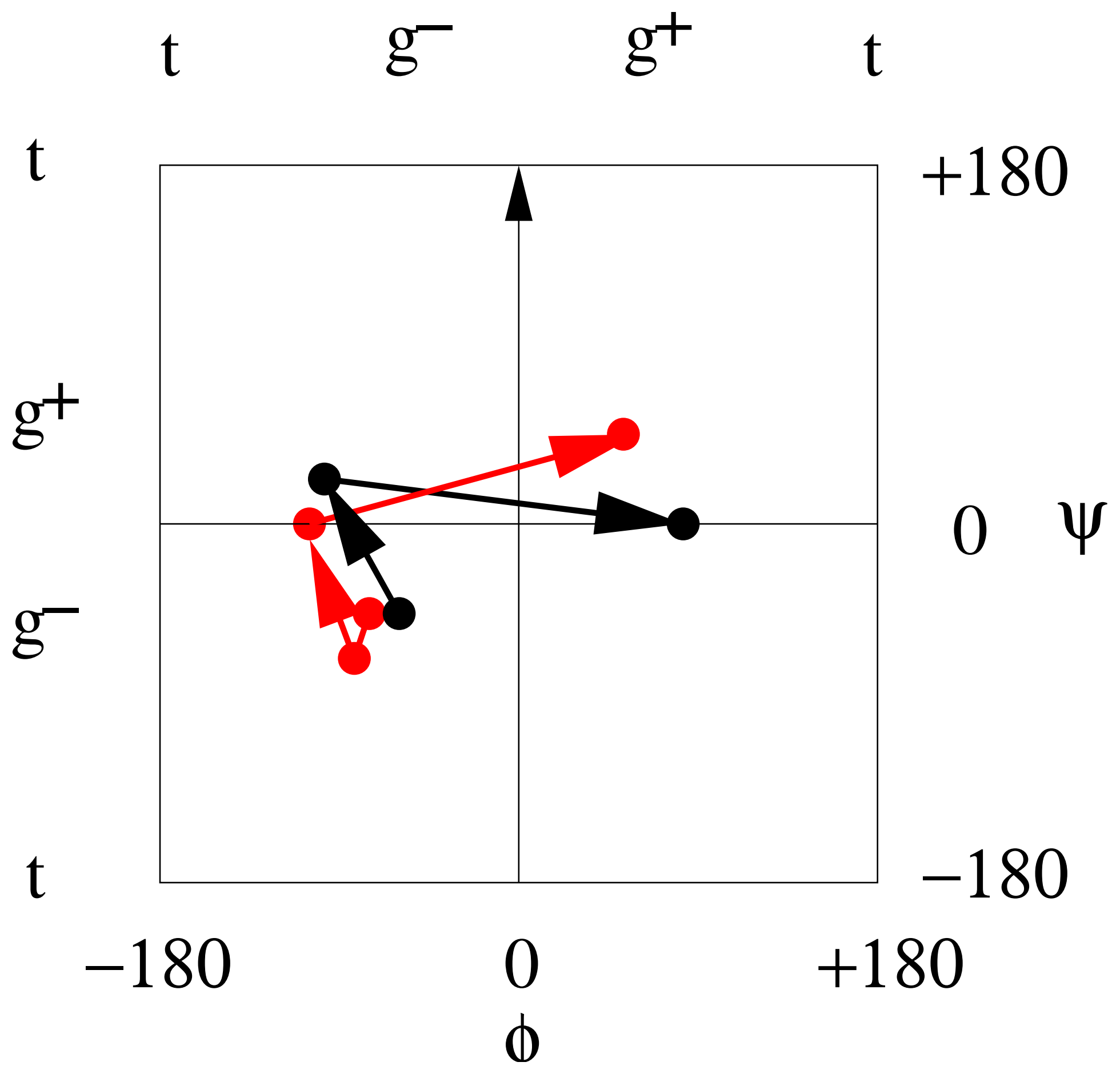
reverzní III'-ohyb

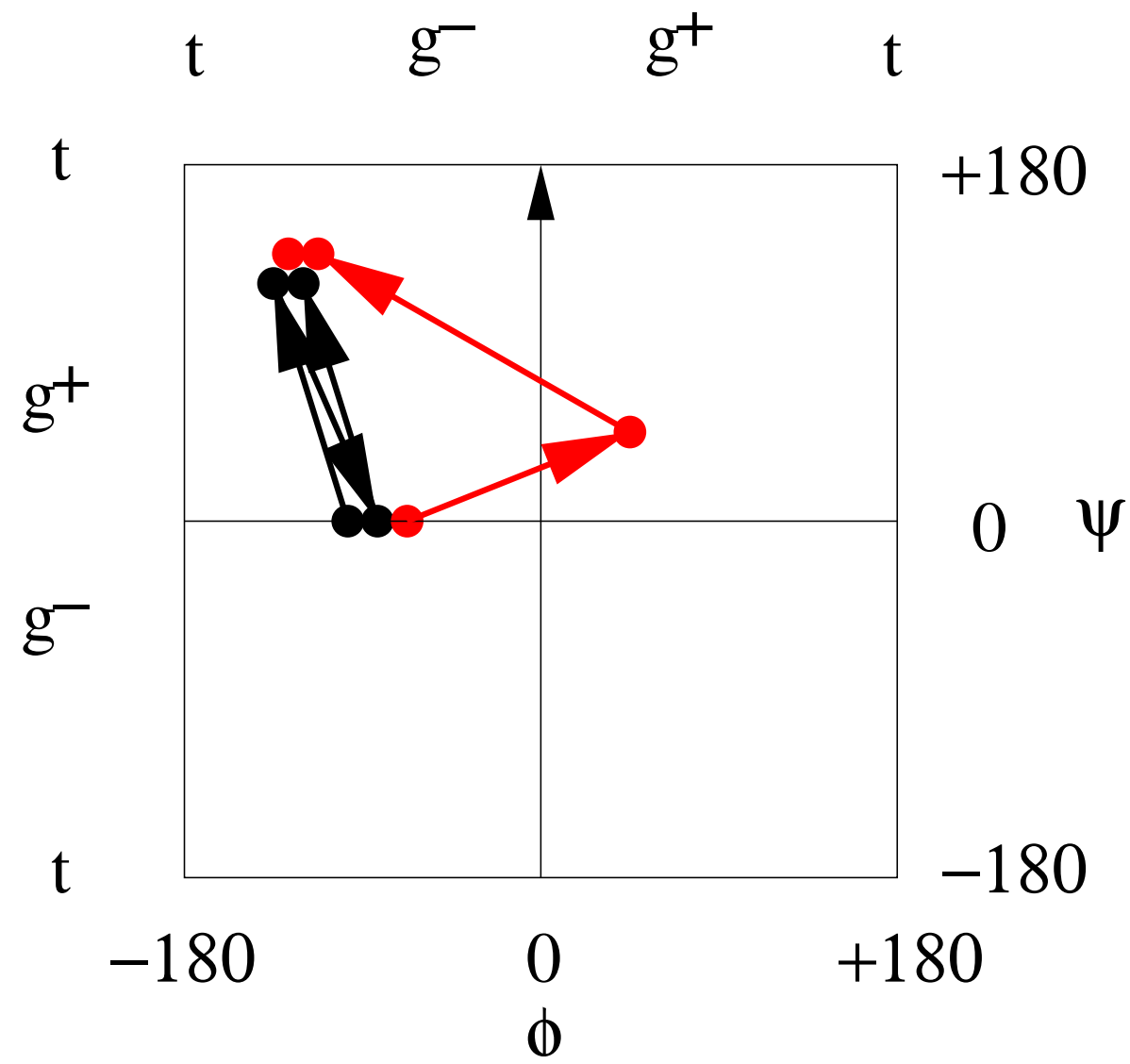
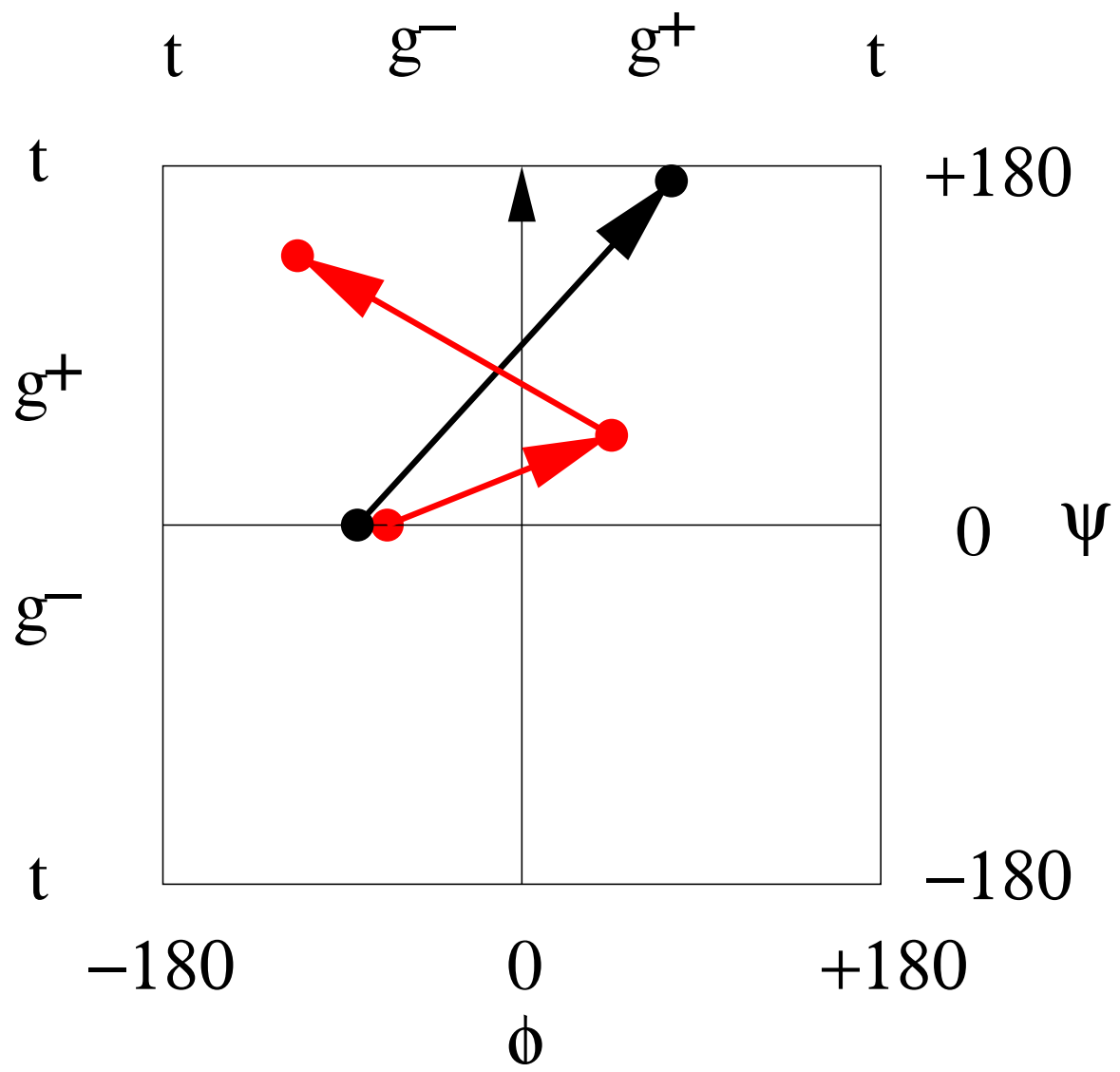
reverzní I-ohyb

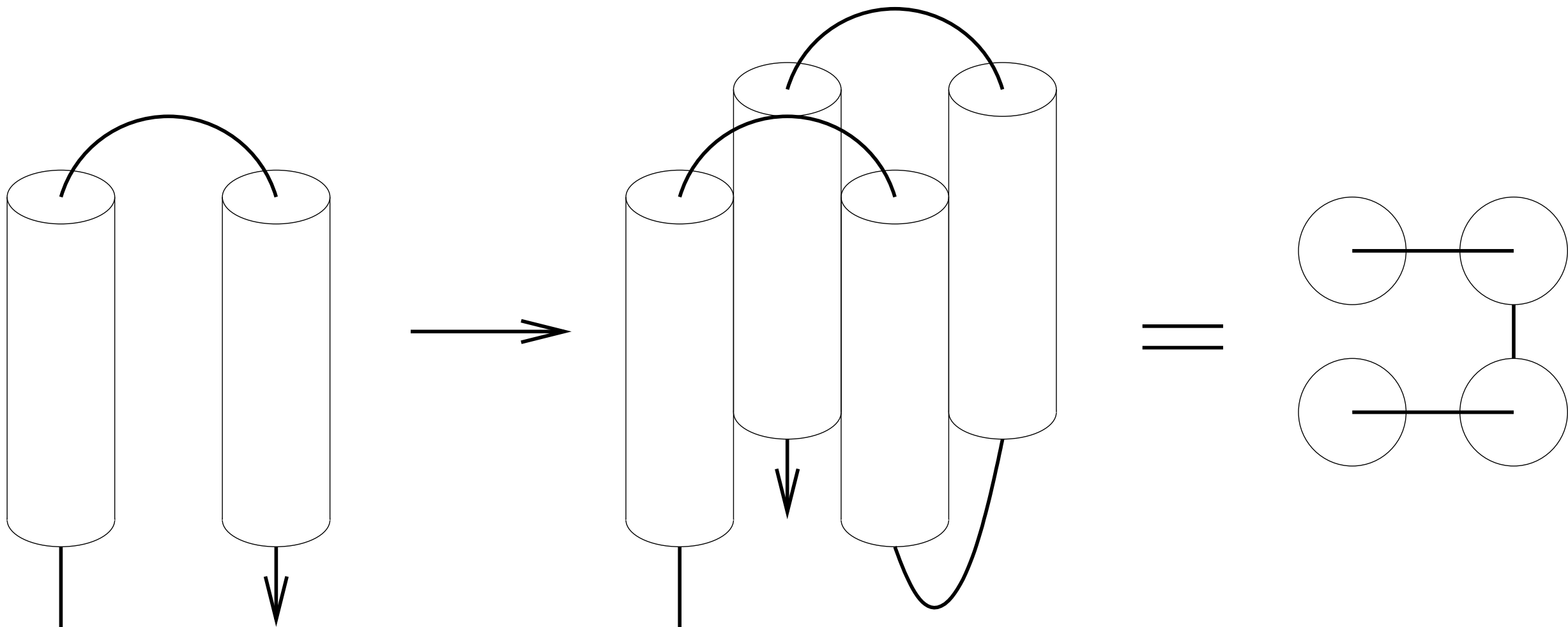
reverzní II-ohyb

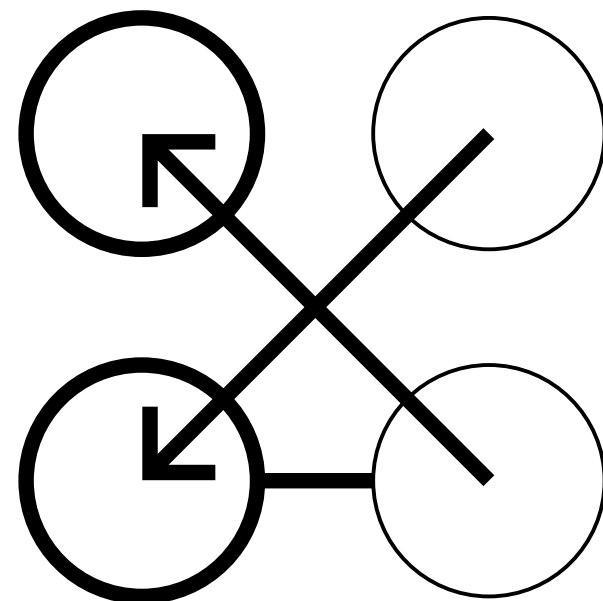
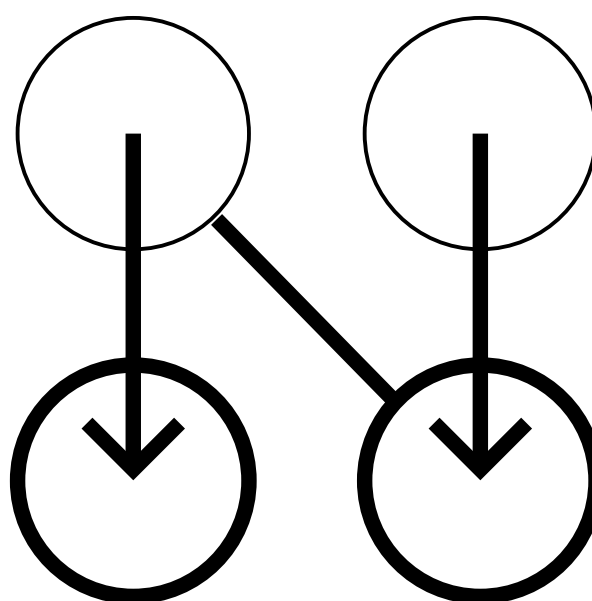
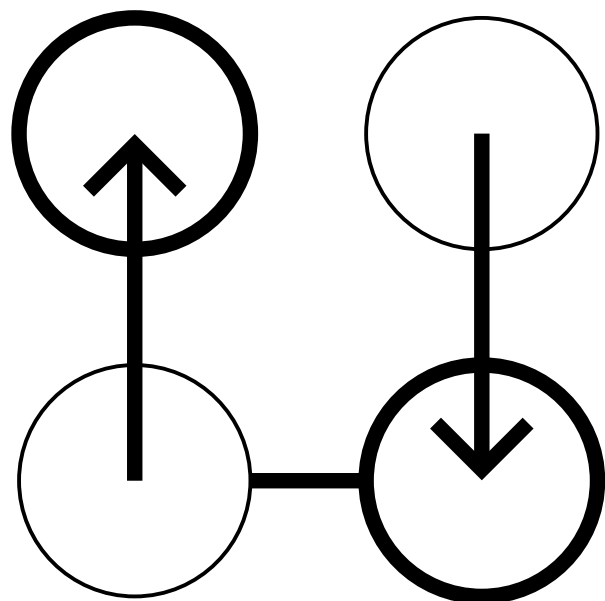
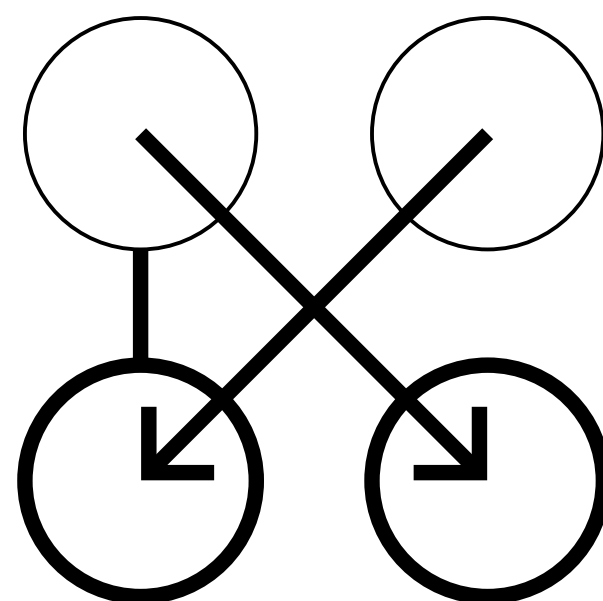
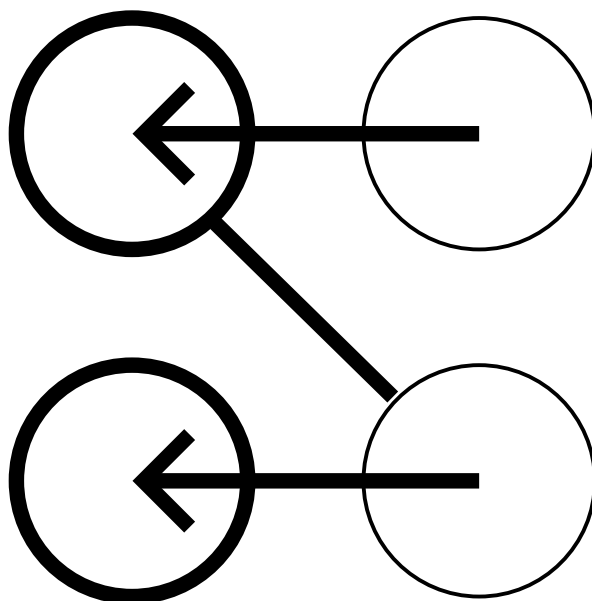
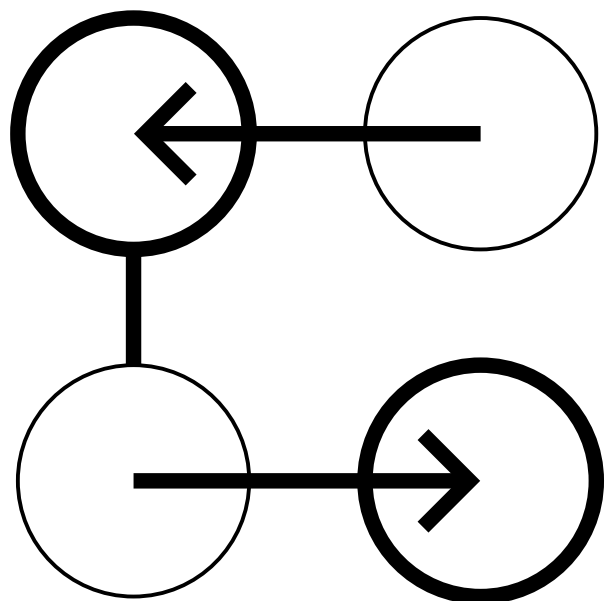
reverzní III-ohyb

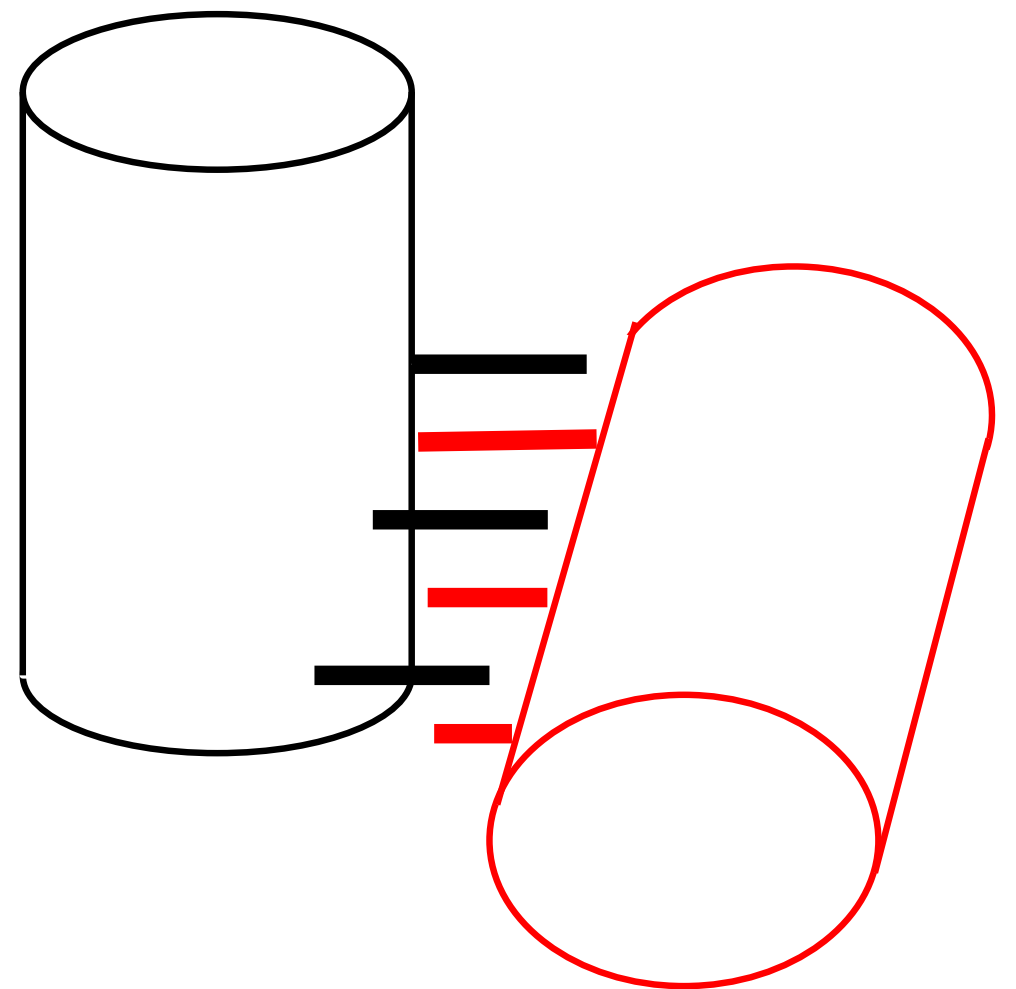
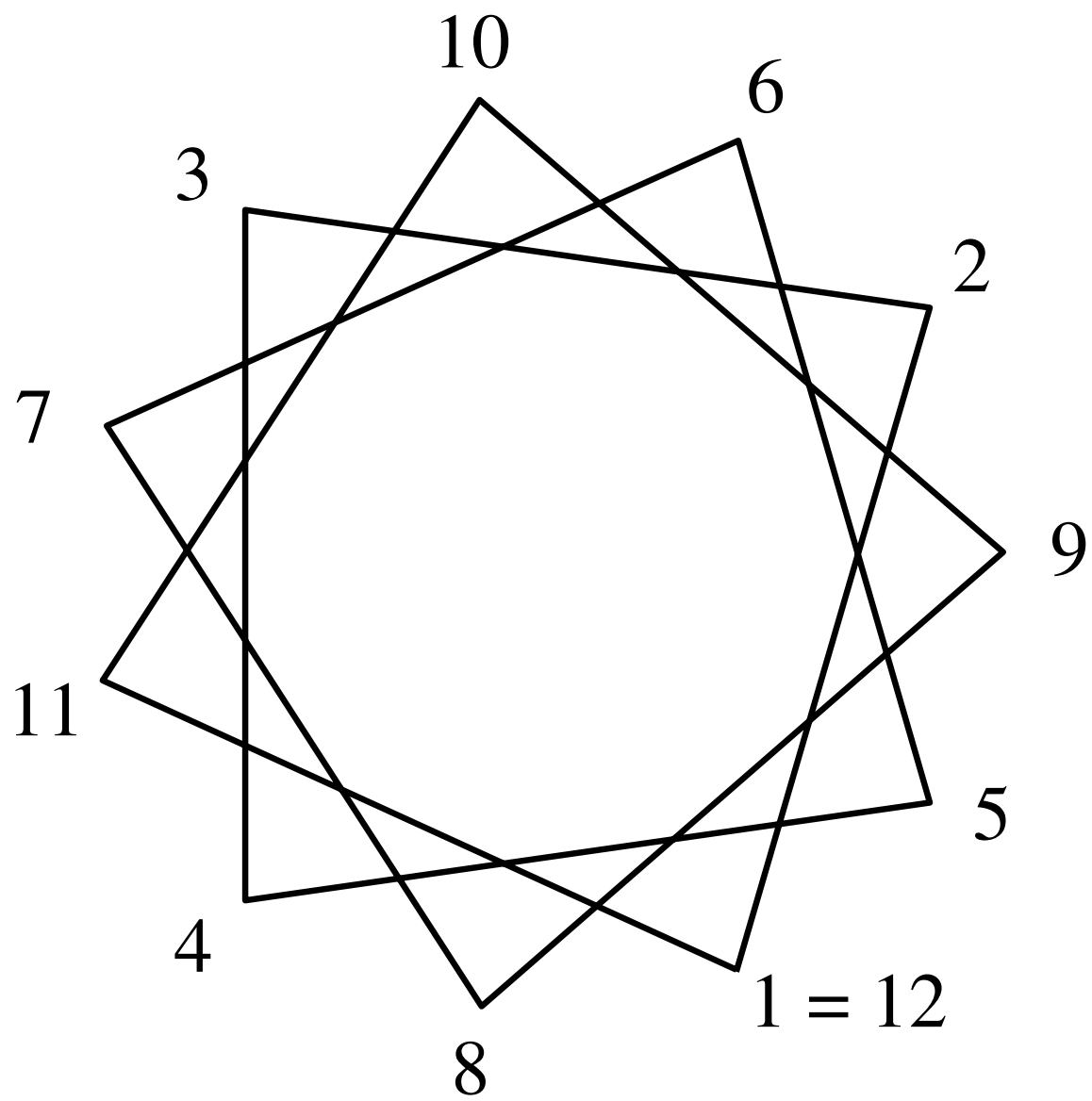


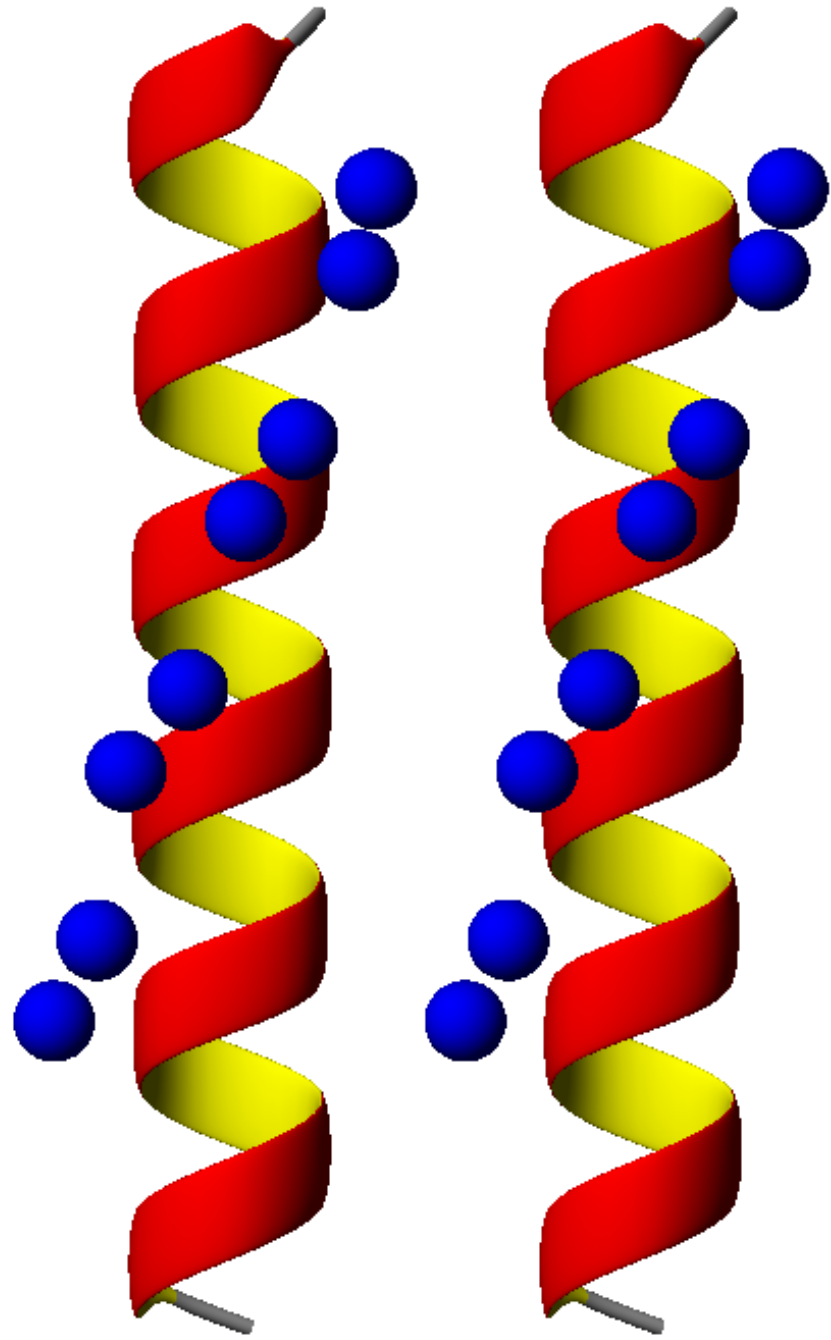


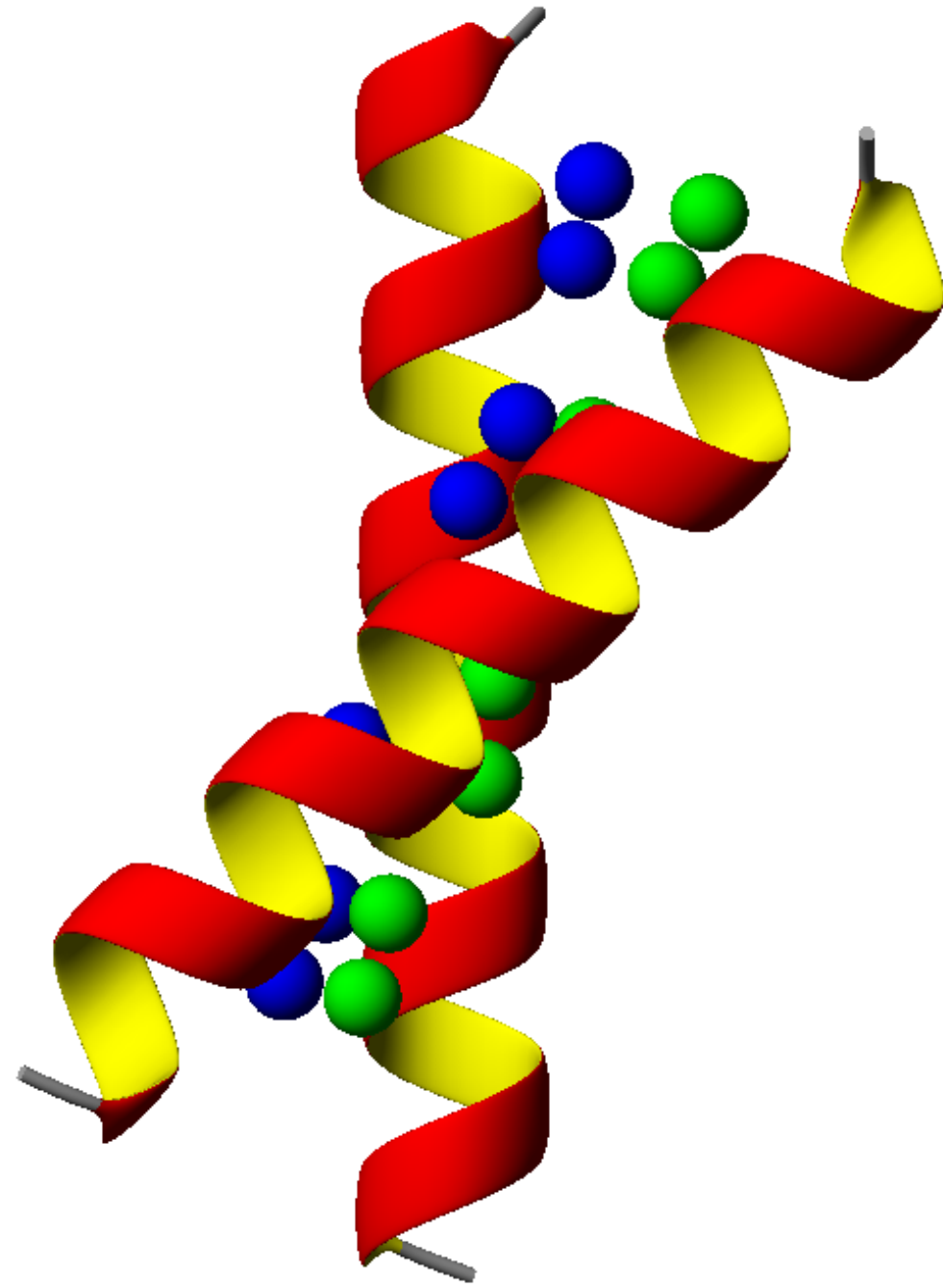




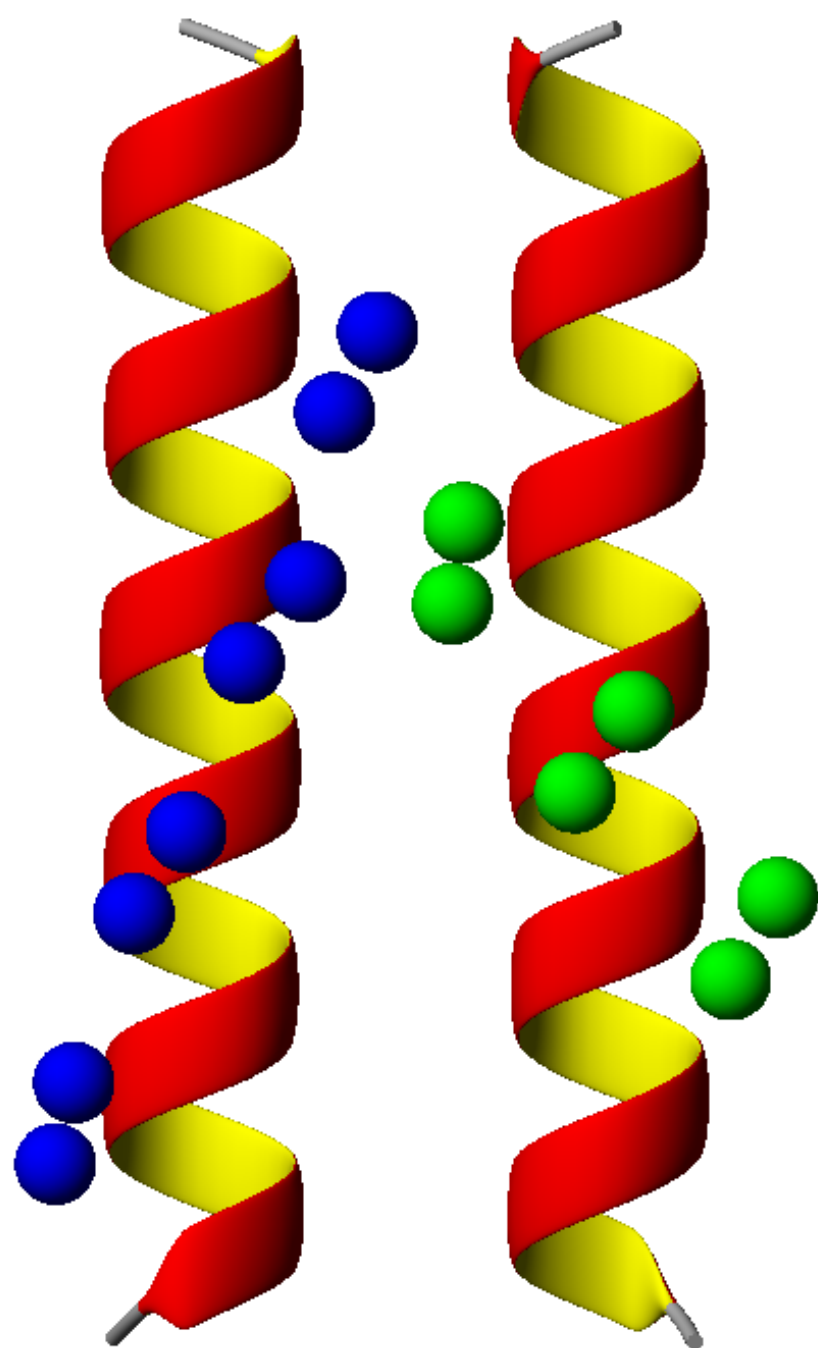


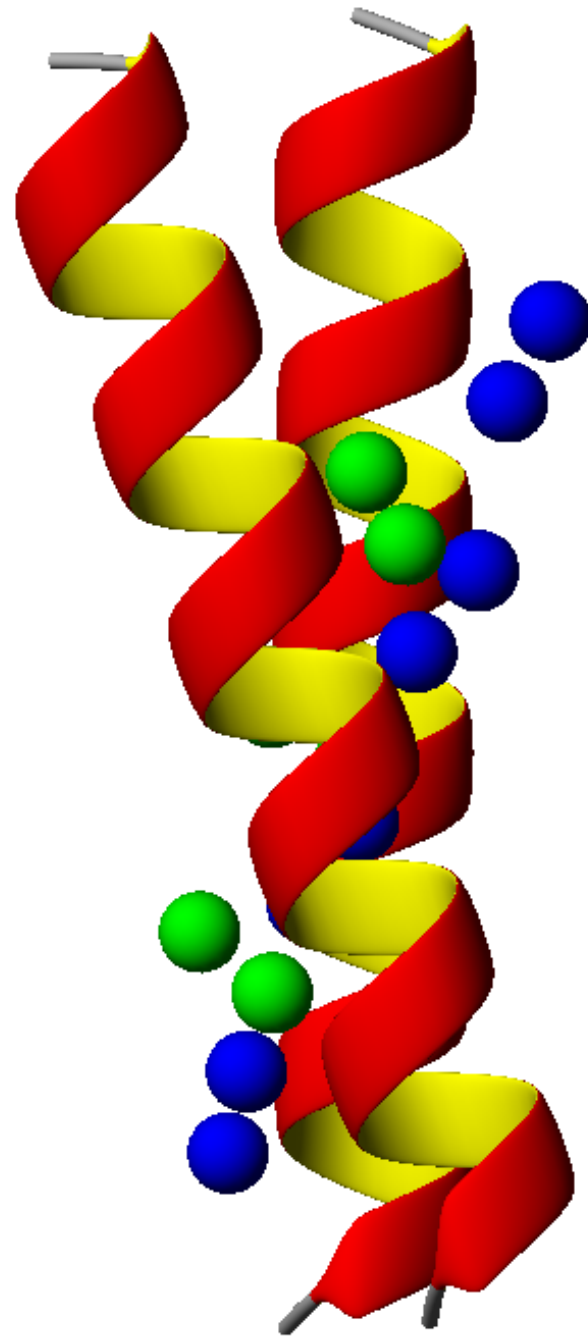




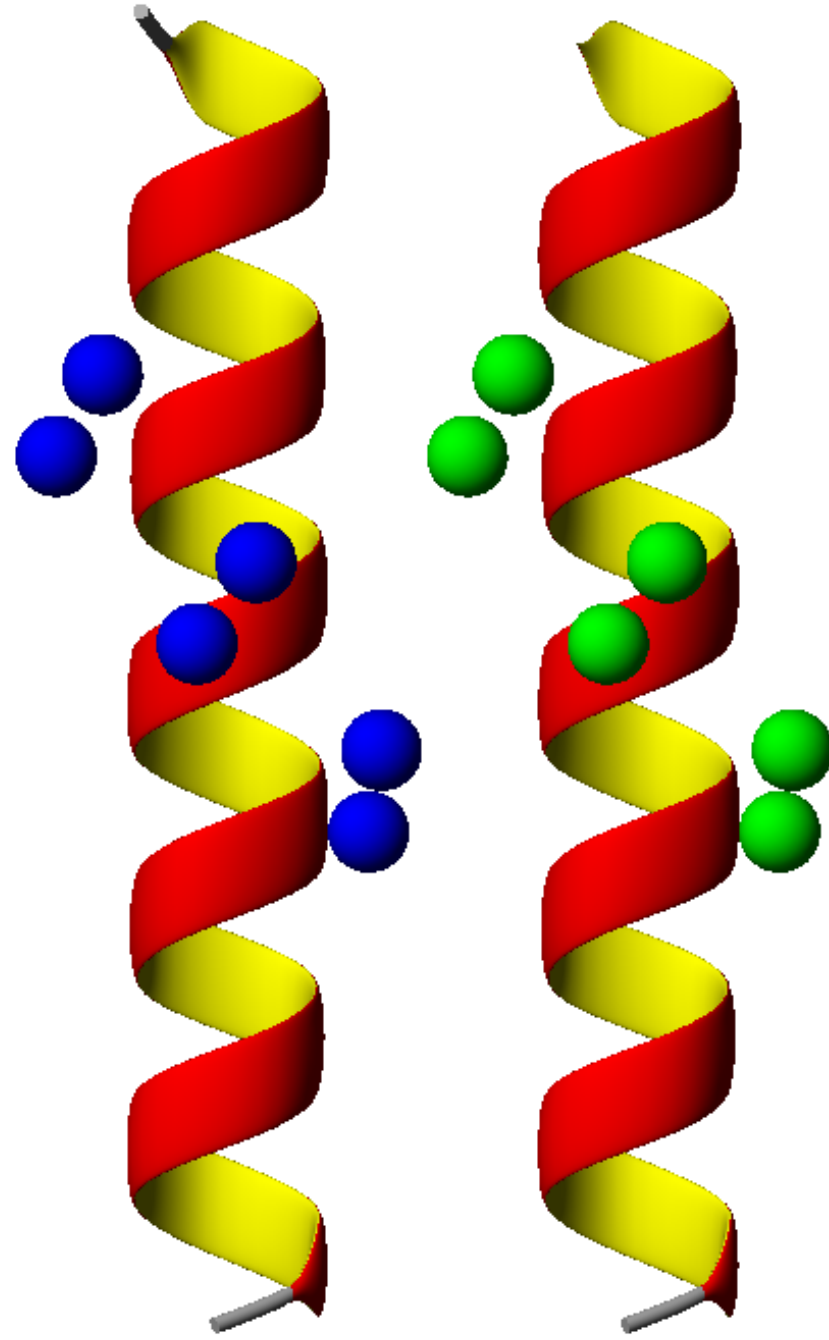


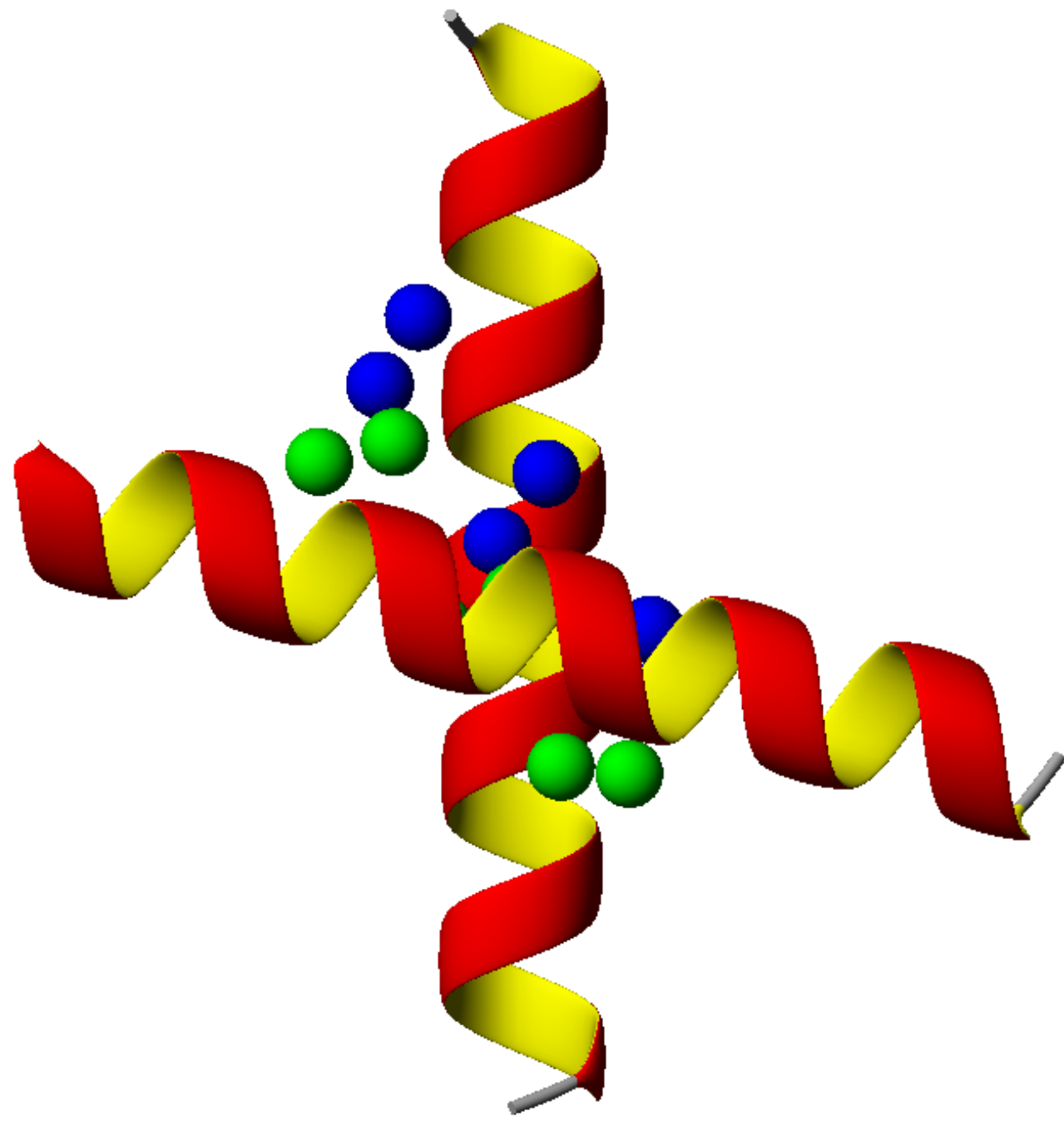
$$i + 4 - i + 4$$





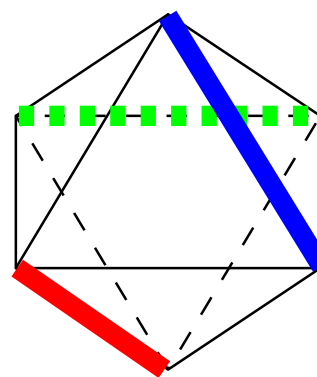
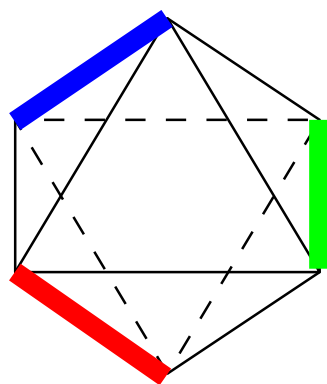
$$i + 4 - i + 3$$



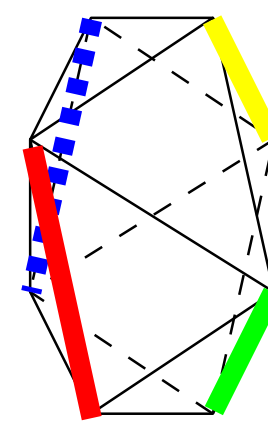
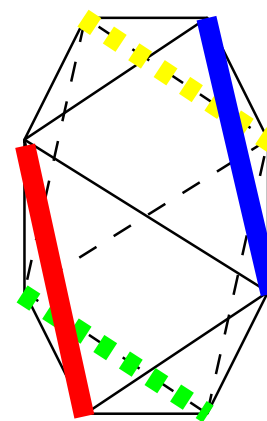
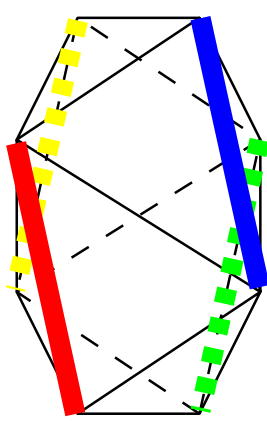
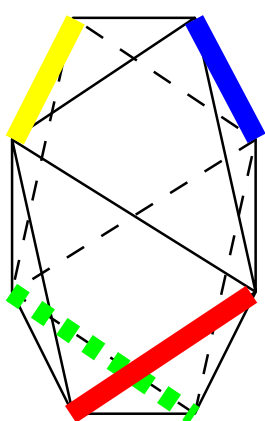
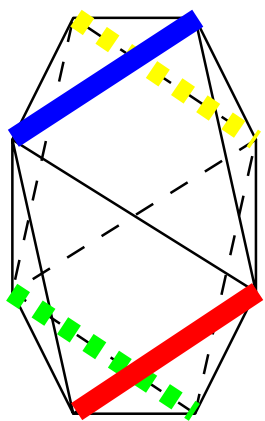
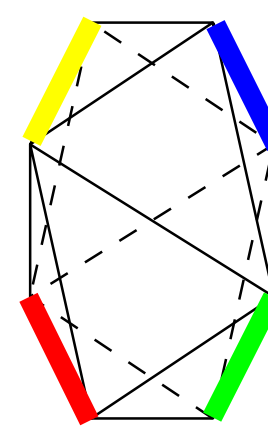
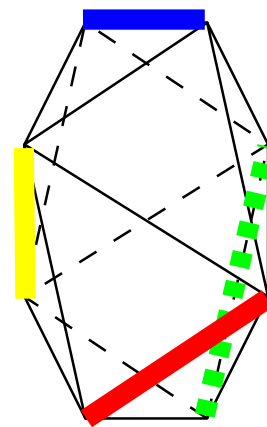
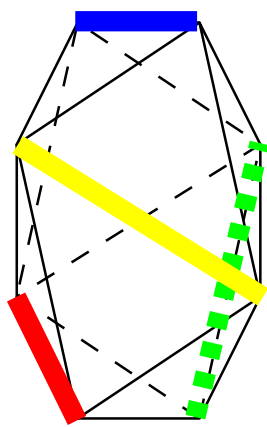
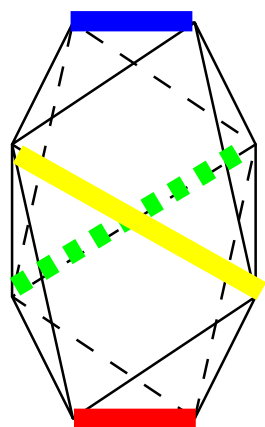
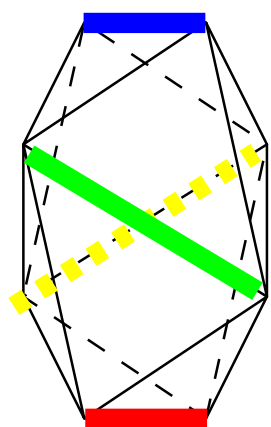


$$i + 3 - i + 3$$

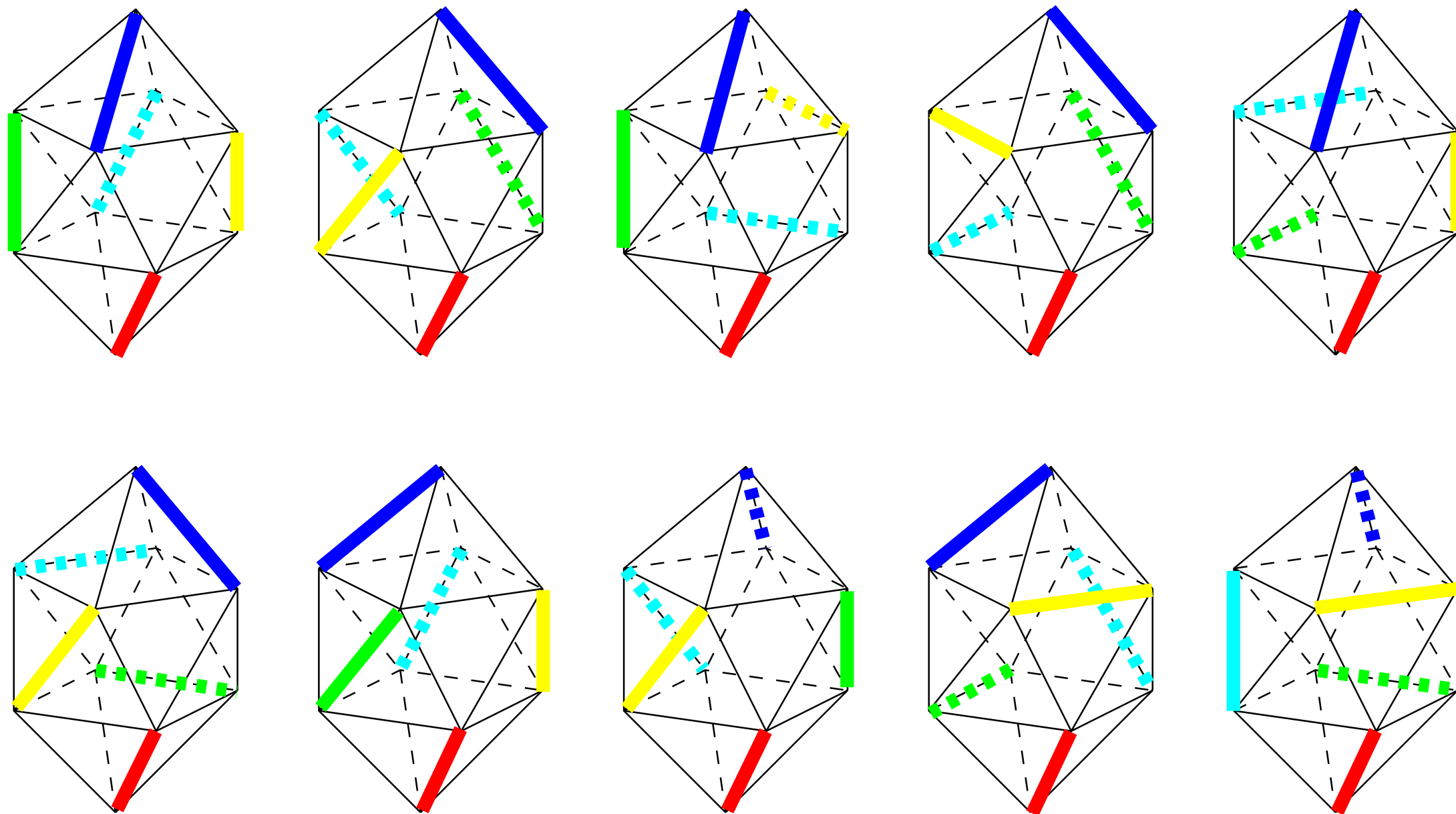
3 hrany osmistěnu (oktaedru)



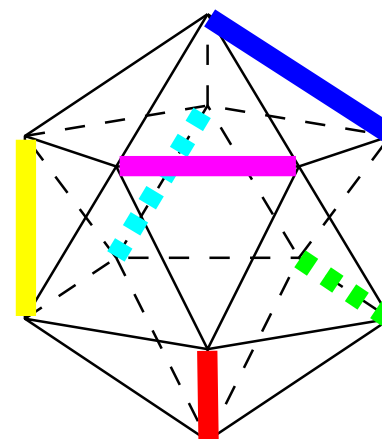
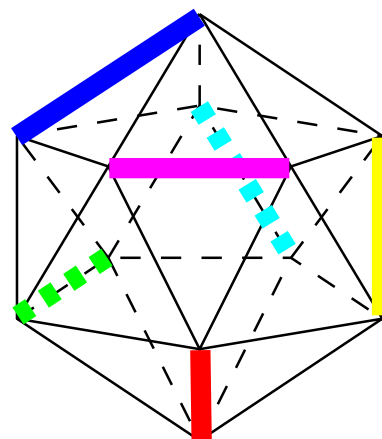
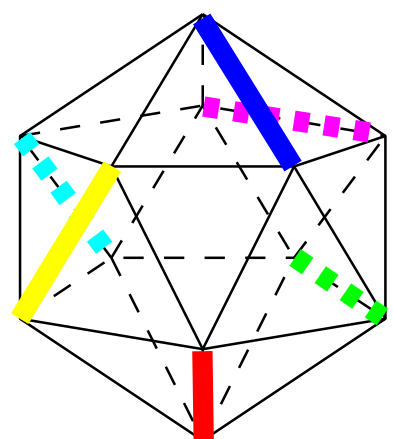
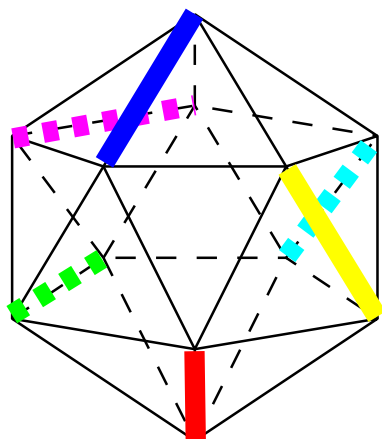
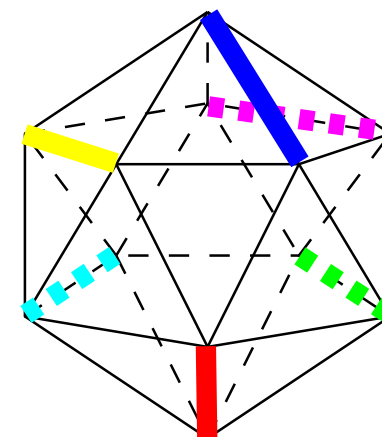
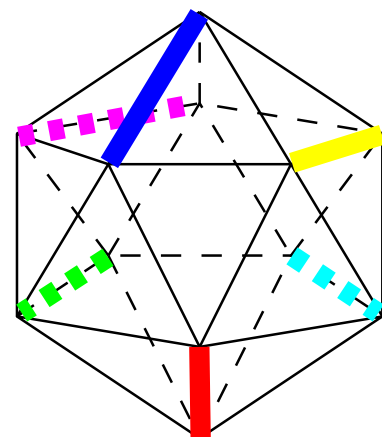
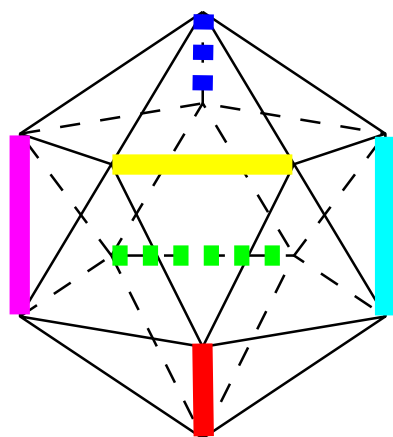
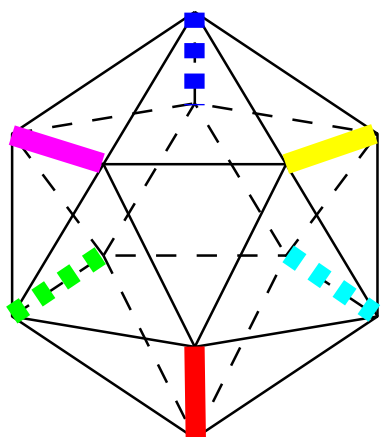
4 hrany dvanáctistěnu (dodekaedru)

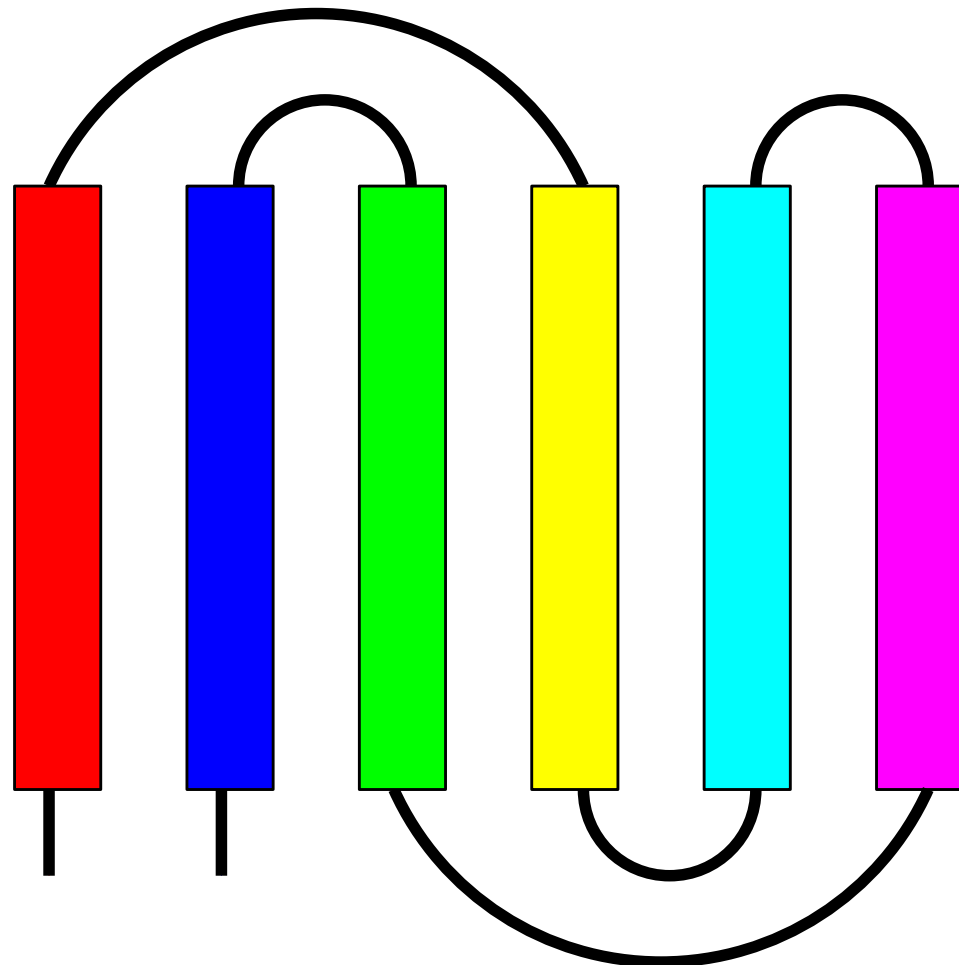
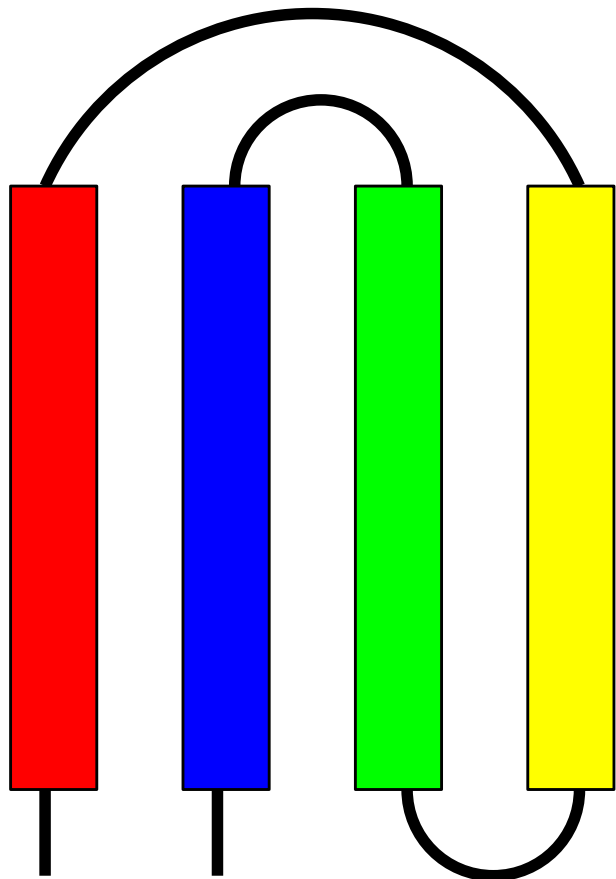
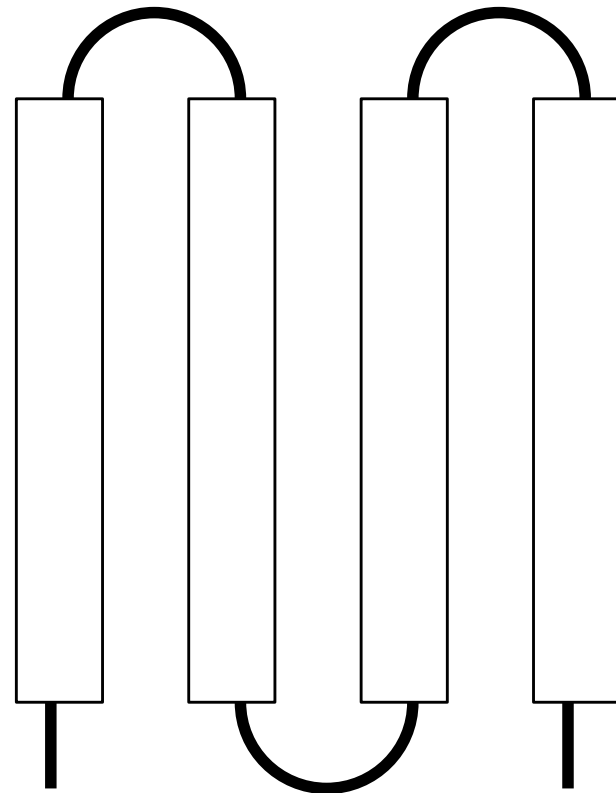
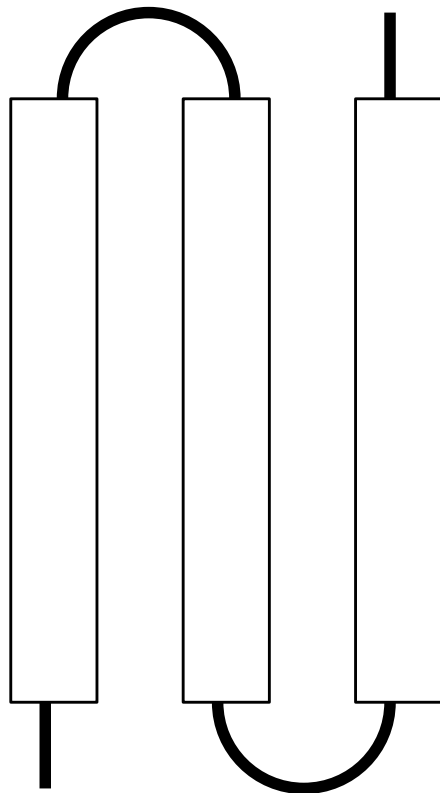
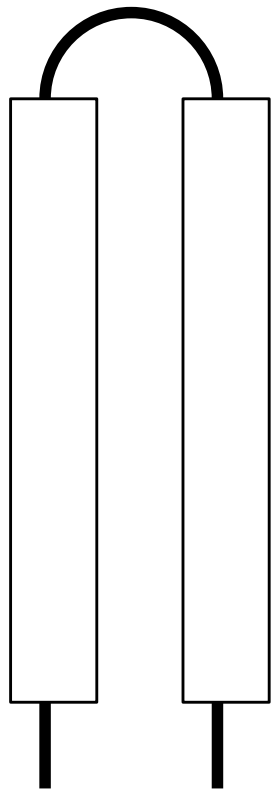


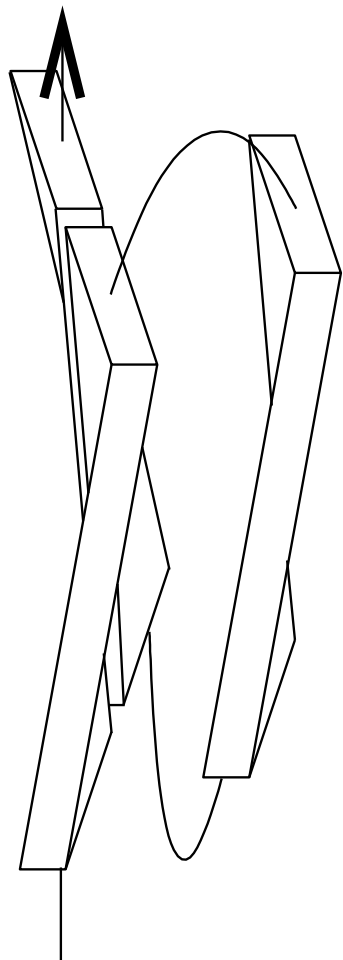
5 hran šestnáctistěnu (hexadekaedru)



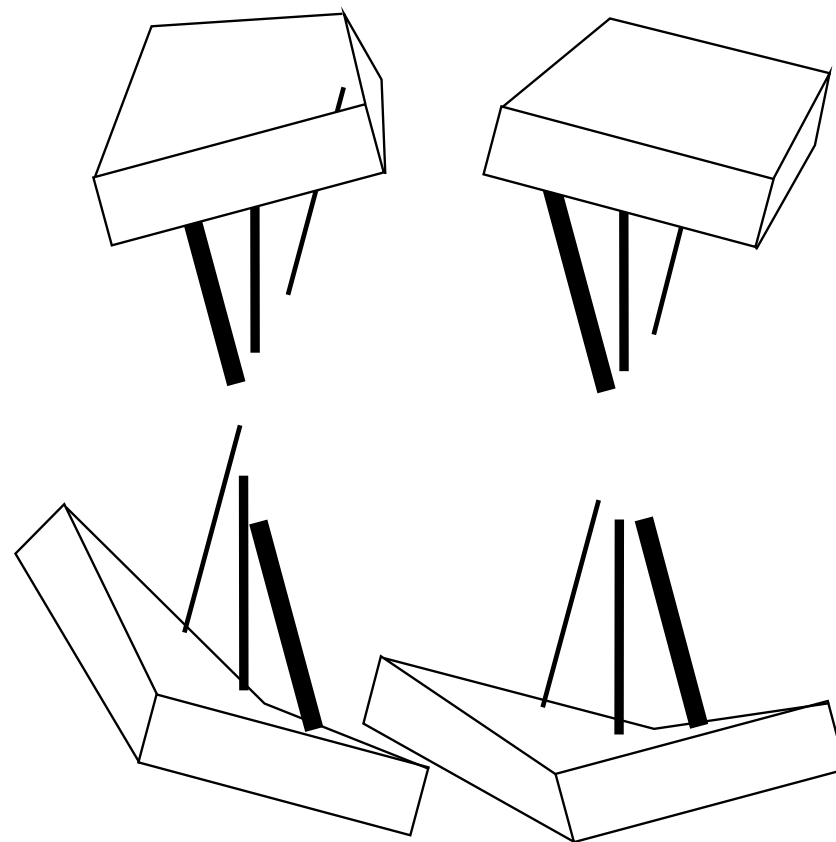
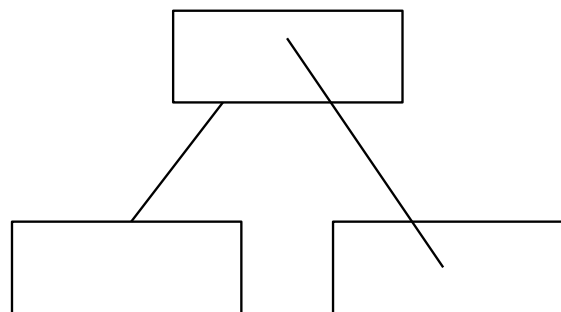
6 hran dvacetistěnu (ikosaedru)

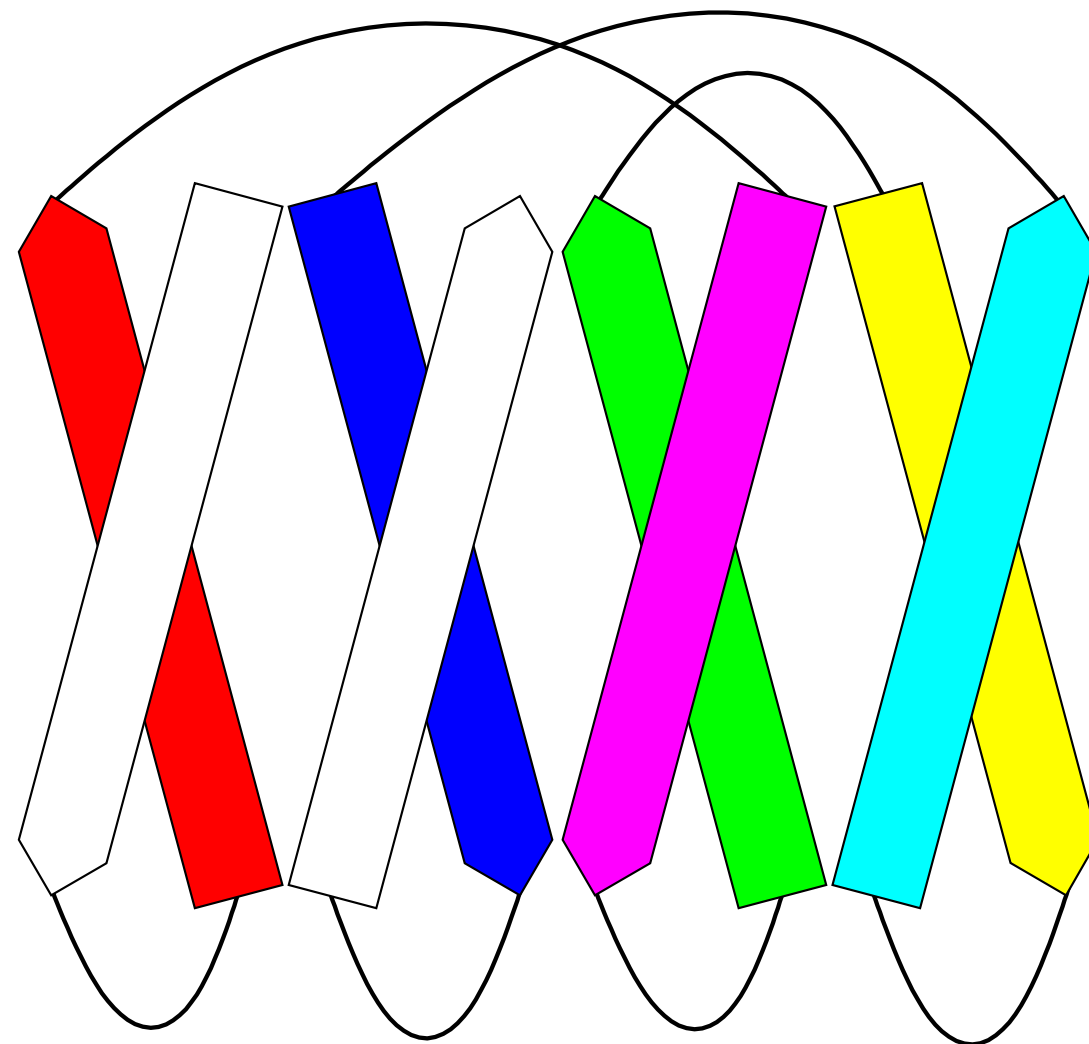
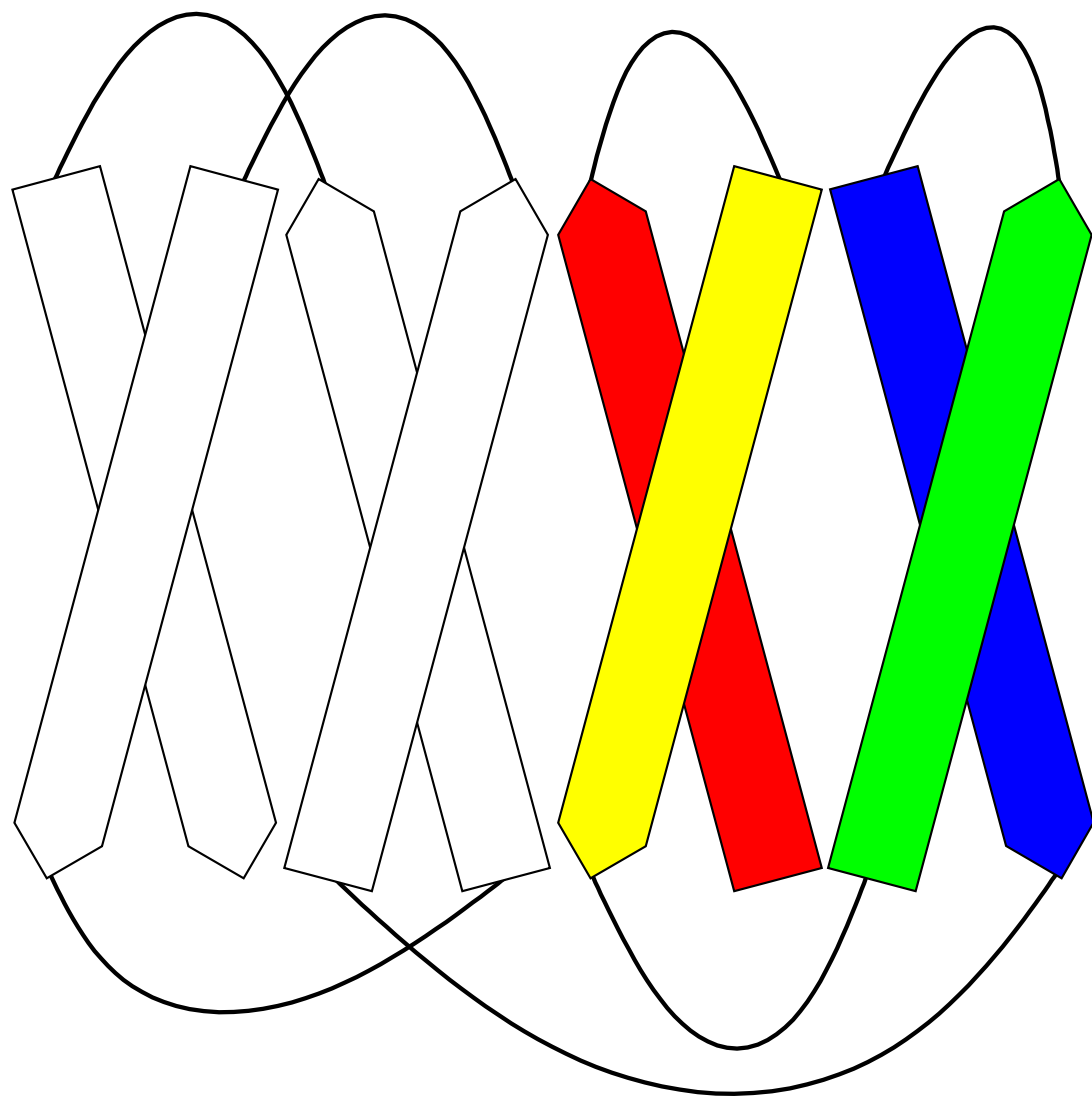


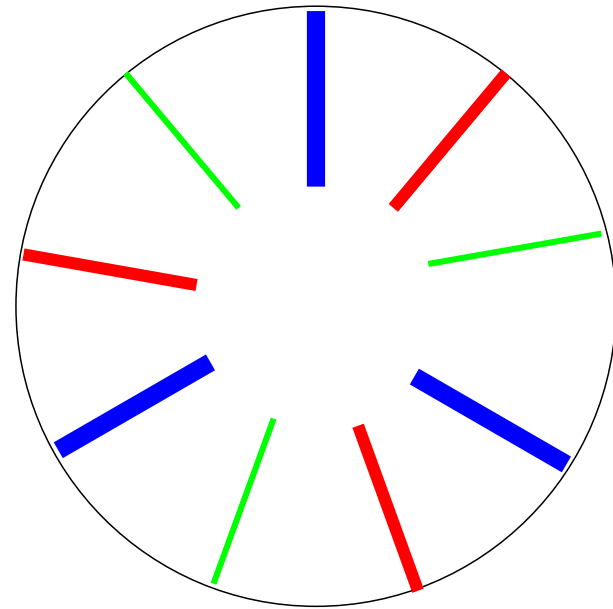
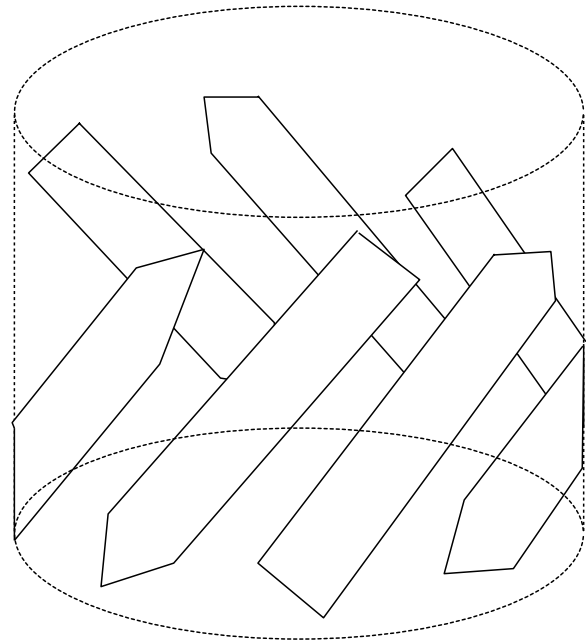
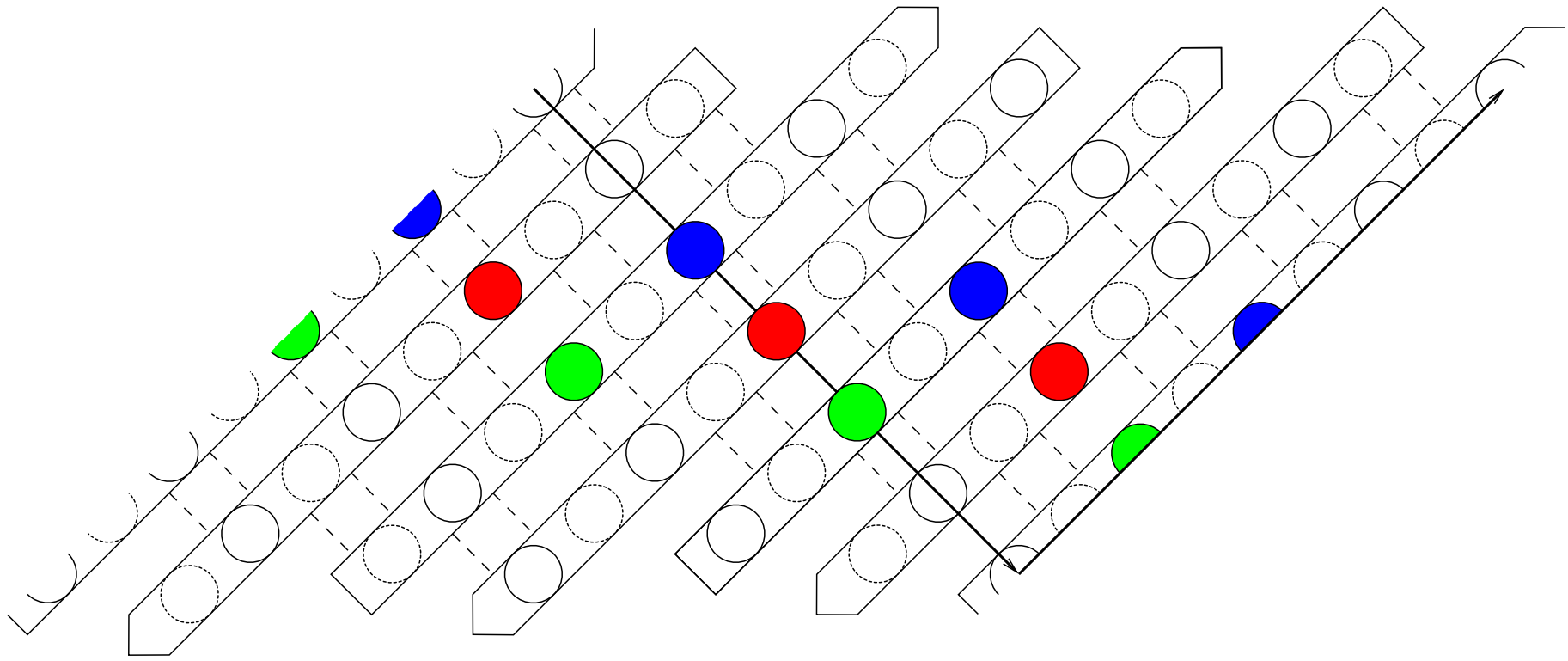




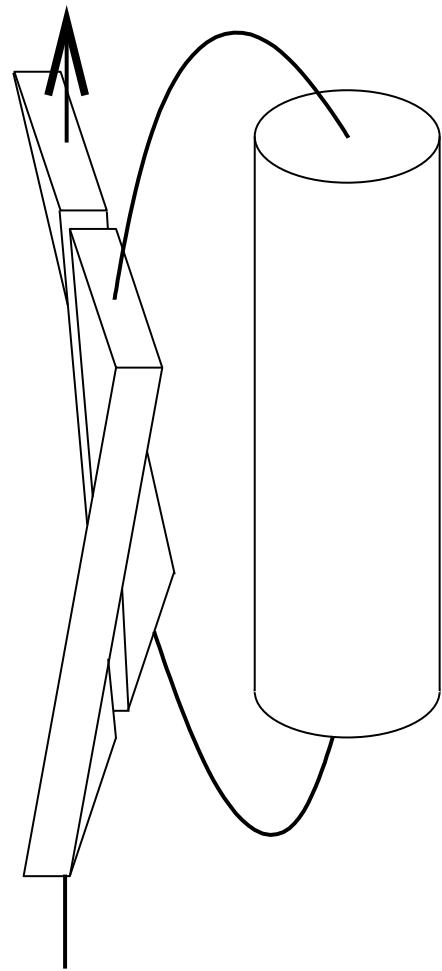
=



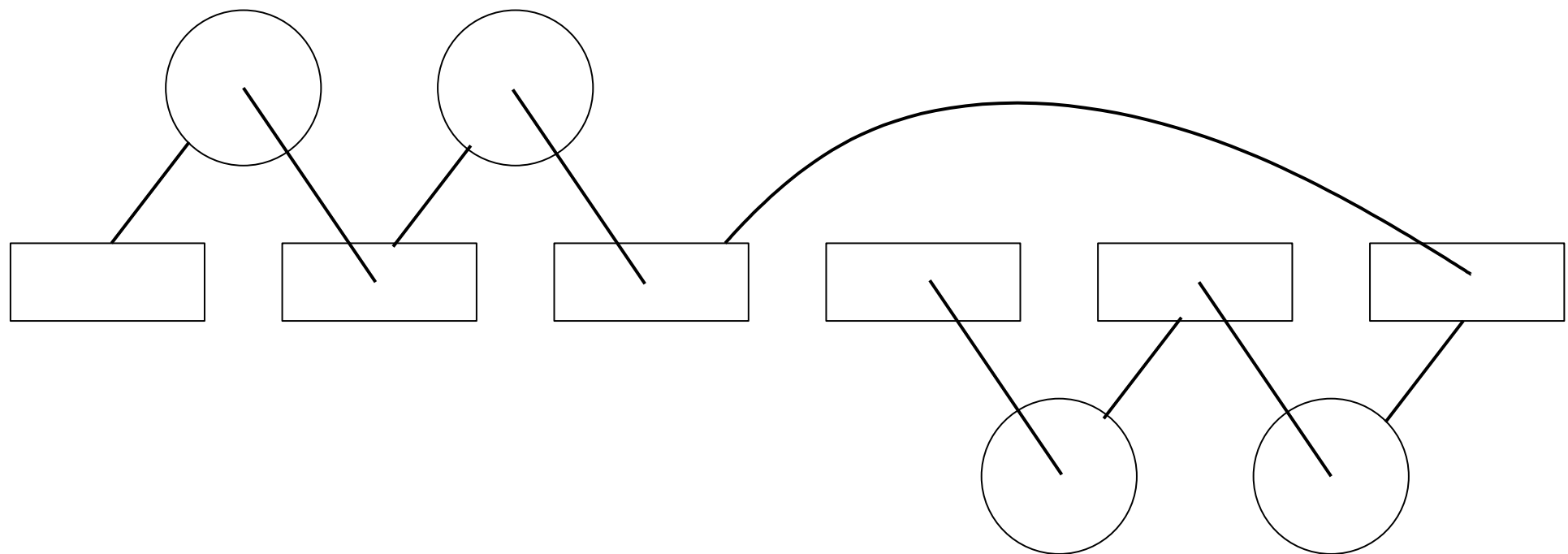
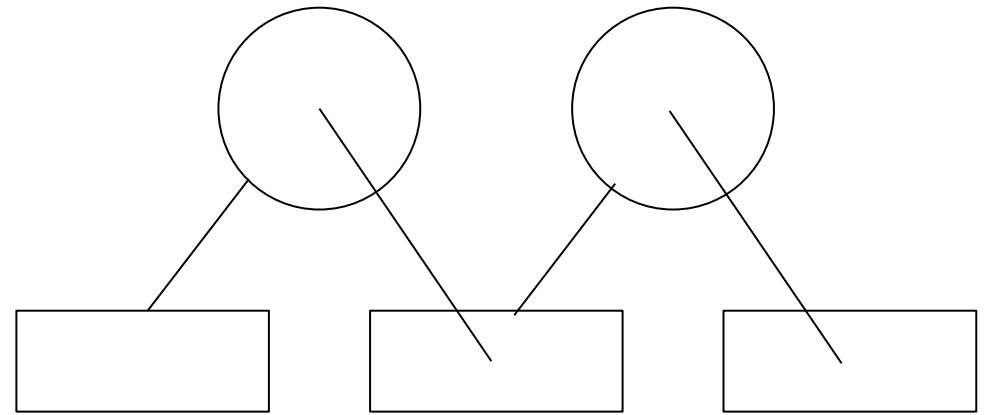
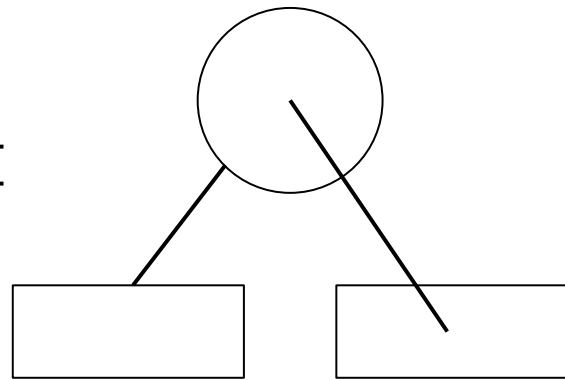


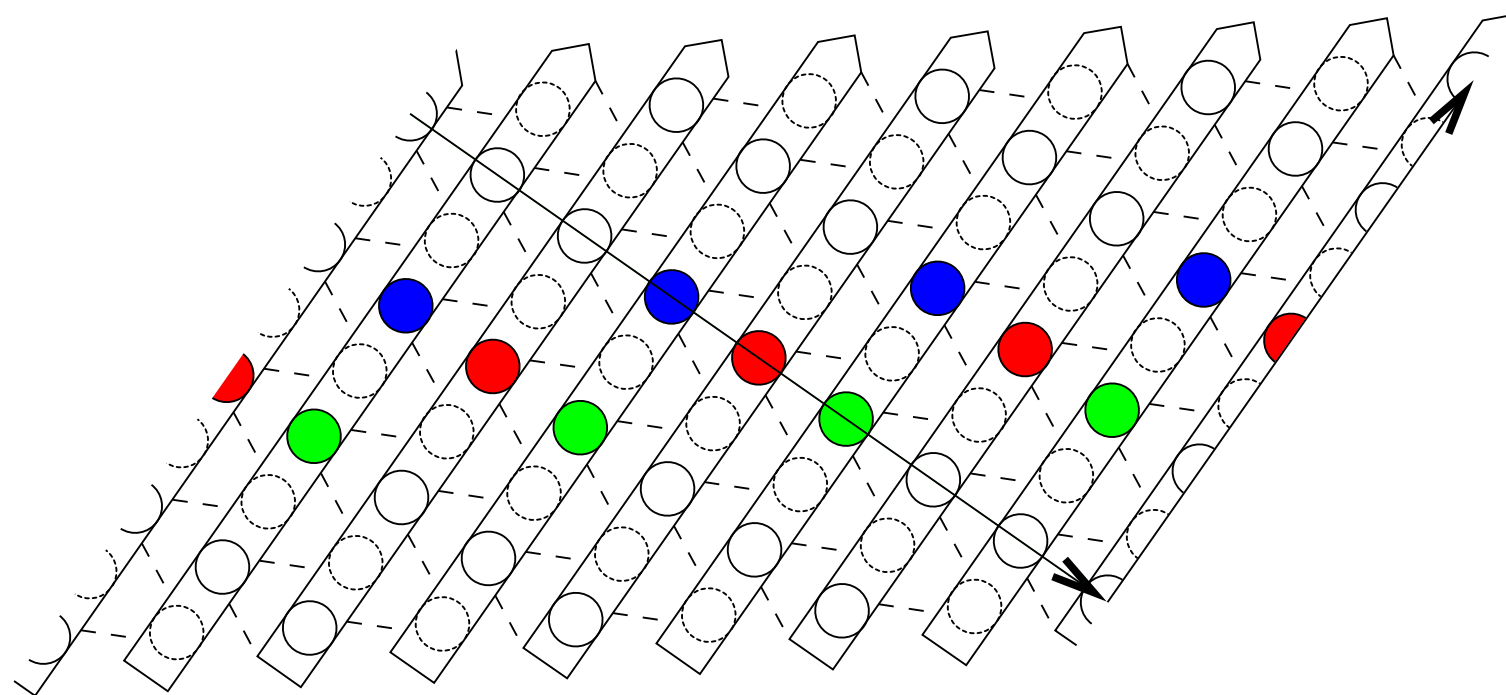
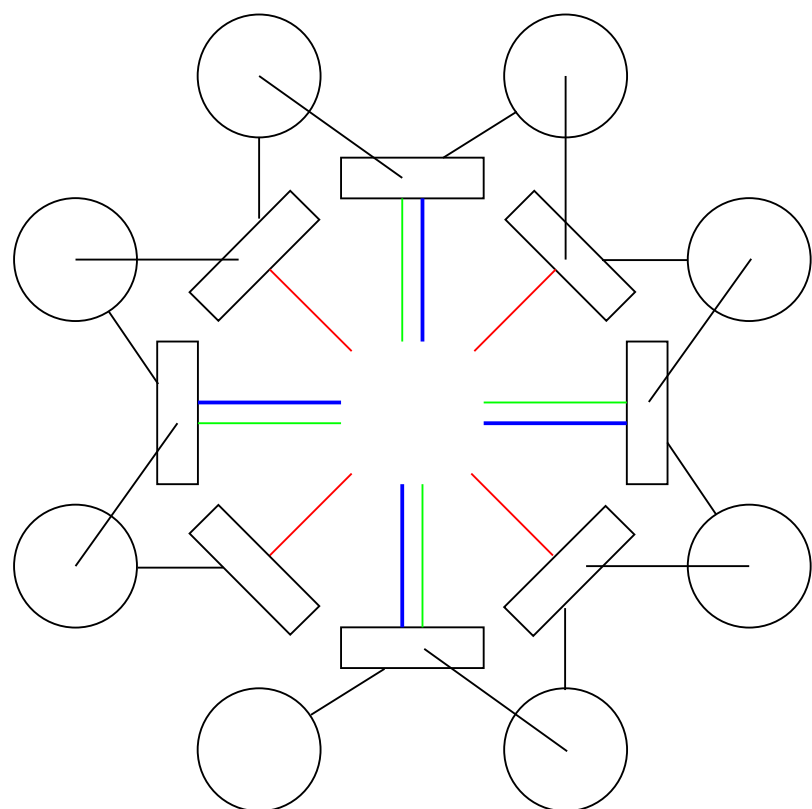


β -barrel



=





soudek triosafofatisomerasy (TIM barrel)