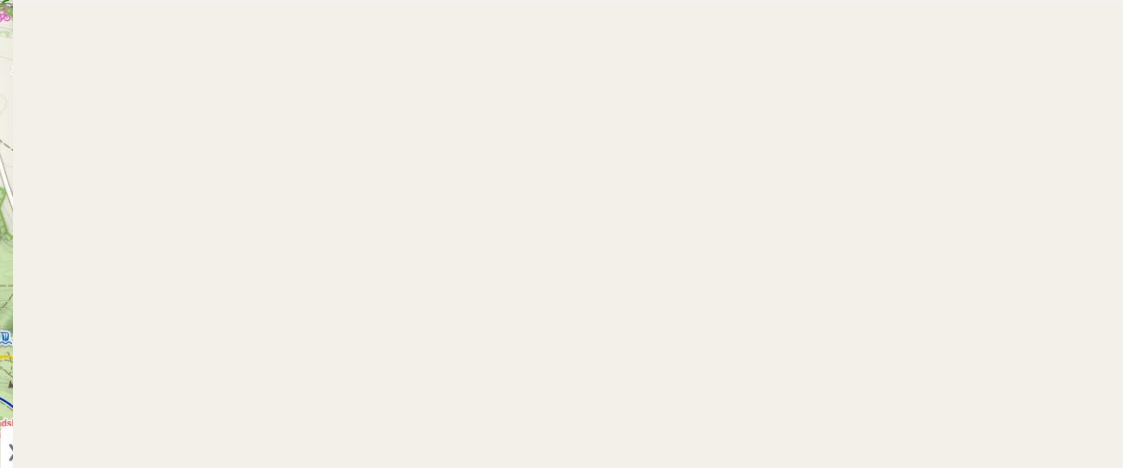
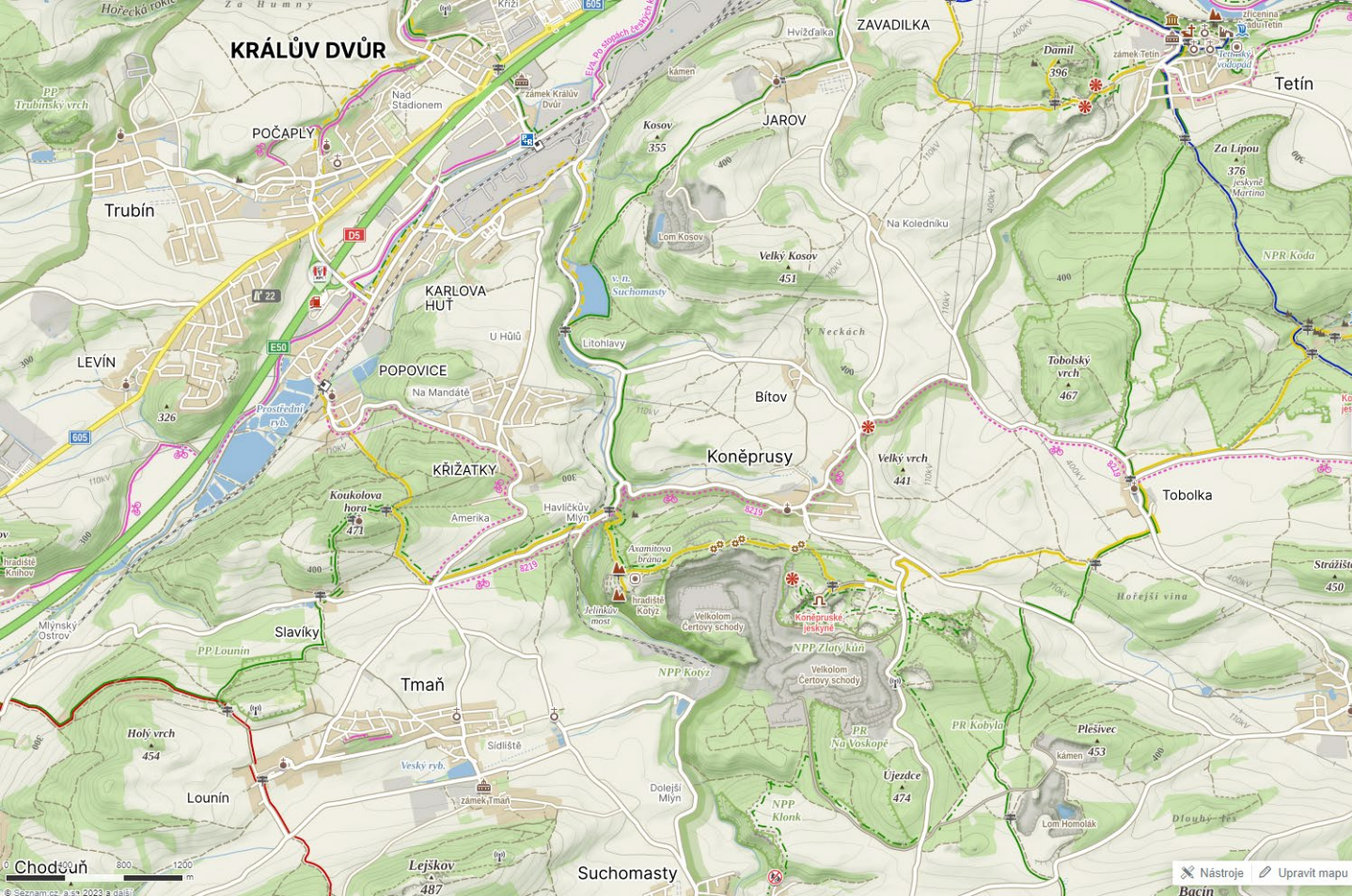




# Společnost a neživá příroda v regionu střední Evropy

**Kurz univerzitního základu  
*podzimní semestr 2024 / 5***











# Výletník





**SOPKY**



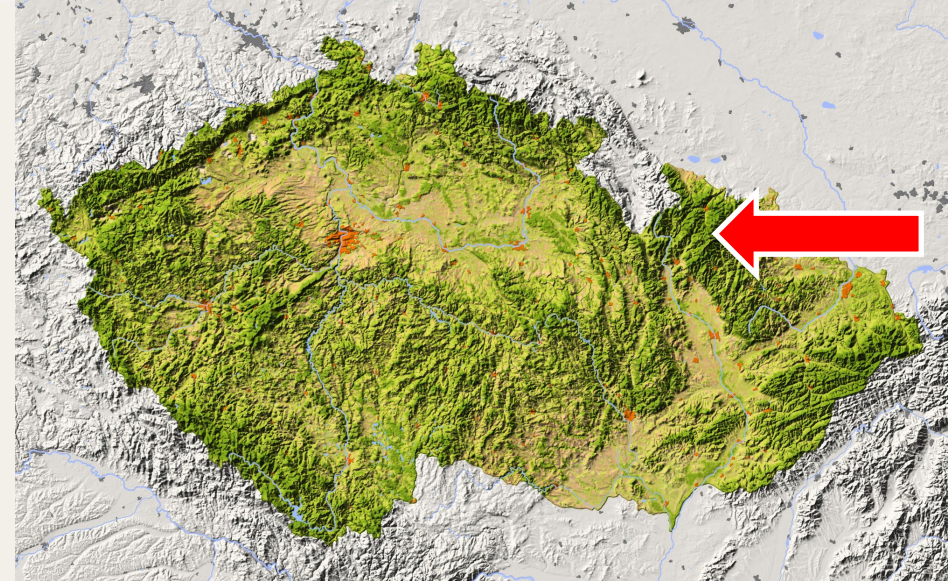
# Železná hůrka



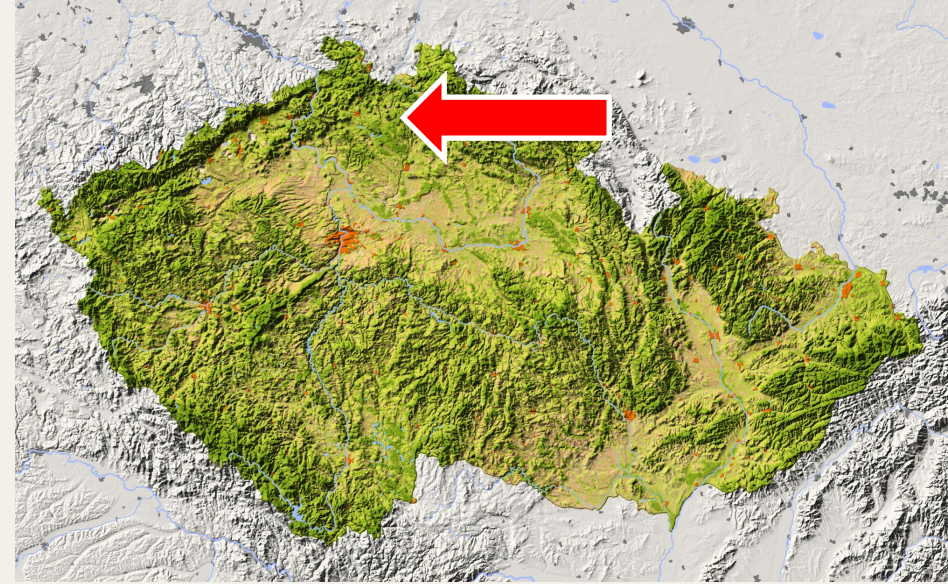
# Komorní hůrka



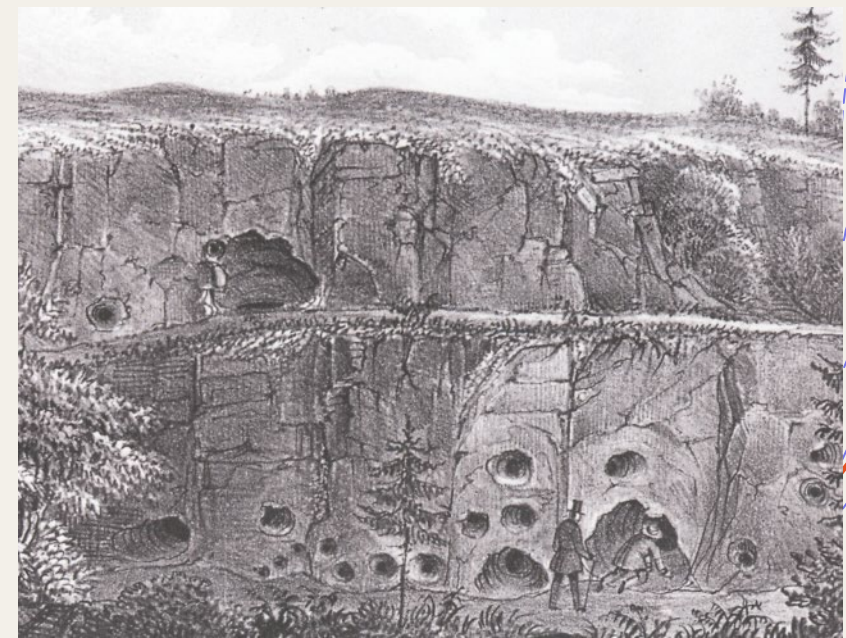
# Uhlířský vrch, Venušina sopka



# Zlatý vrch



# Skalky skřítků



# Bořeň



# Čertova zed'



# Bukovec



Marcel Blánek ©

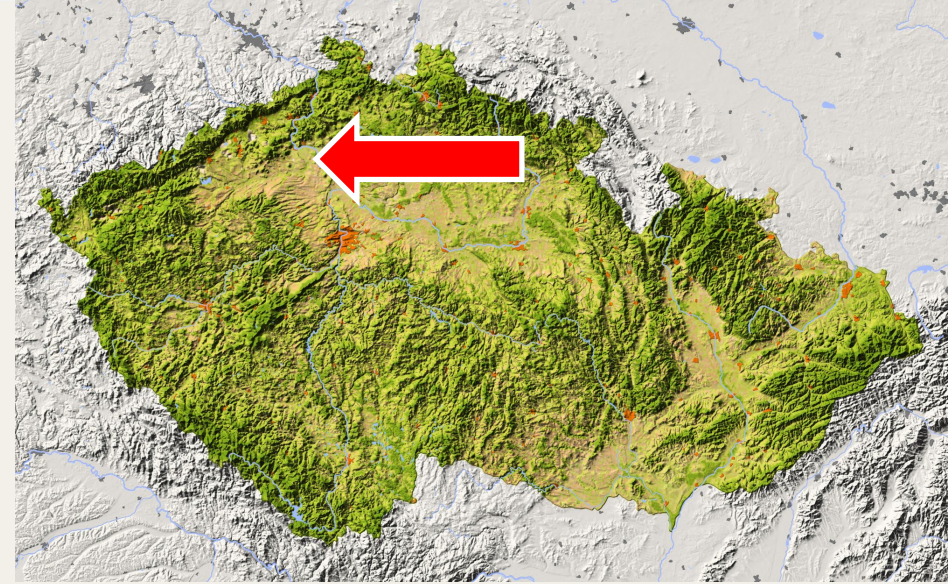




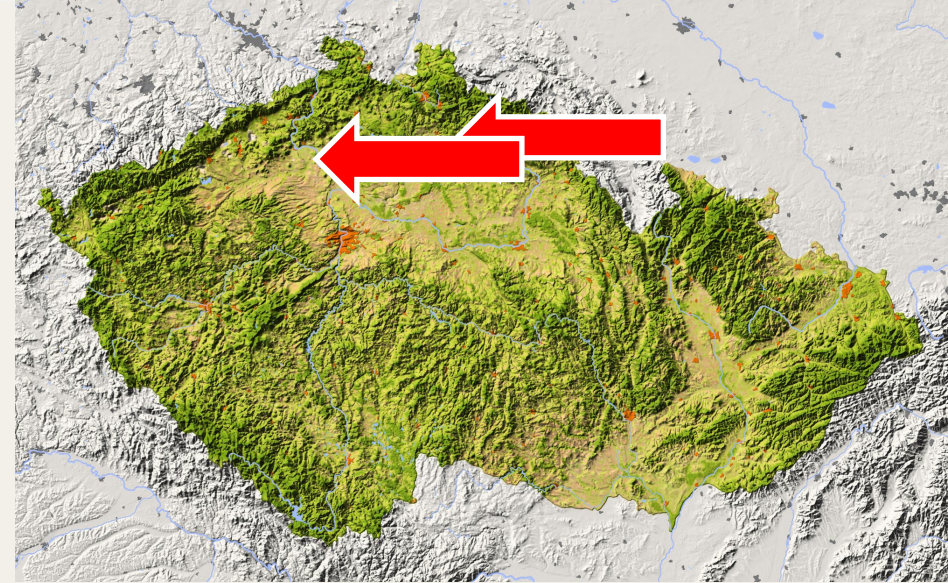
# MAGMATICKÉ HORNINY



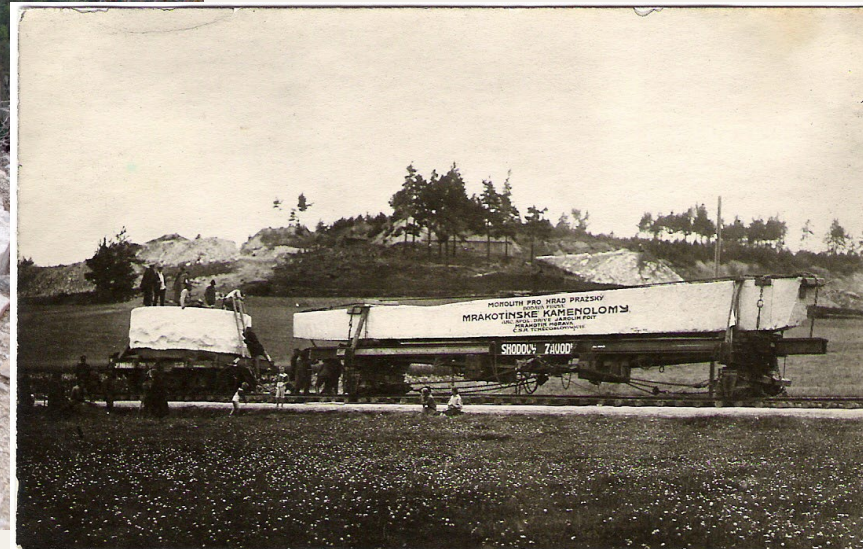
# Hnojnice



# České granáty



# Mrákotínské žuly



# Středočeský pluton



# Středočeský pluton





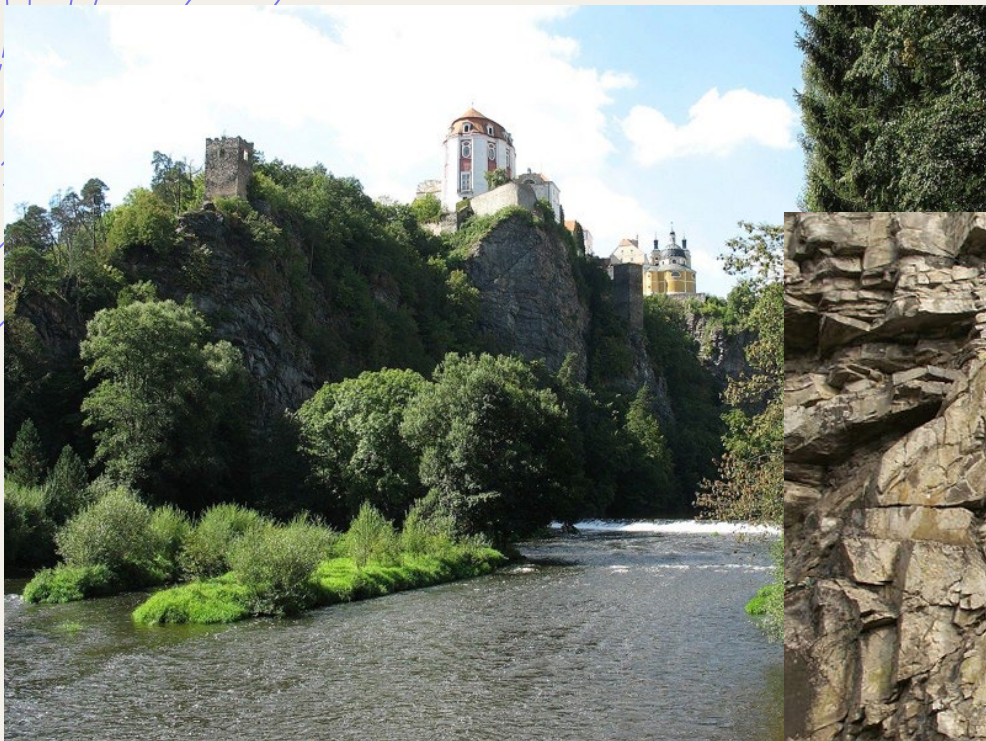
# **METAMORFOVANÉ HORNINY**

# Granátová skála

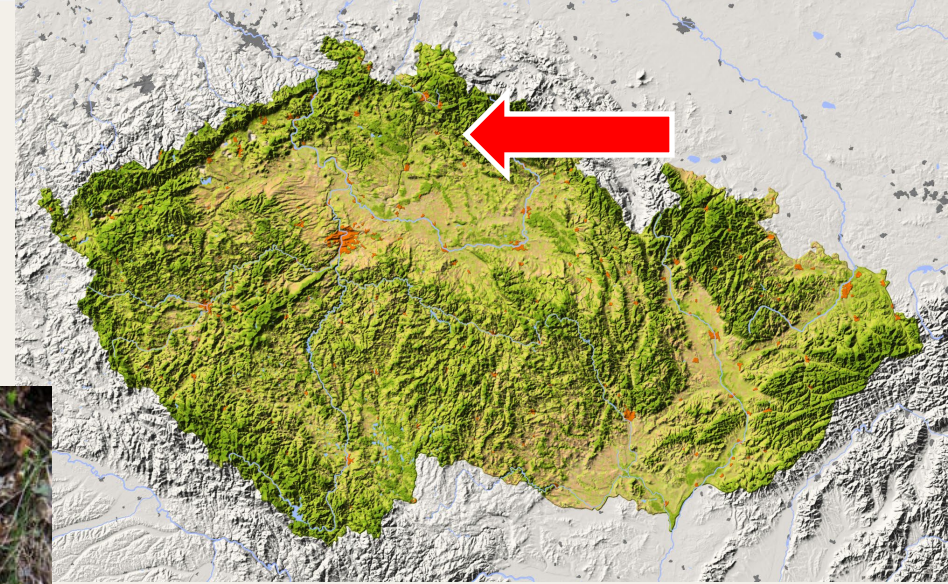




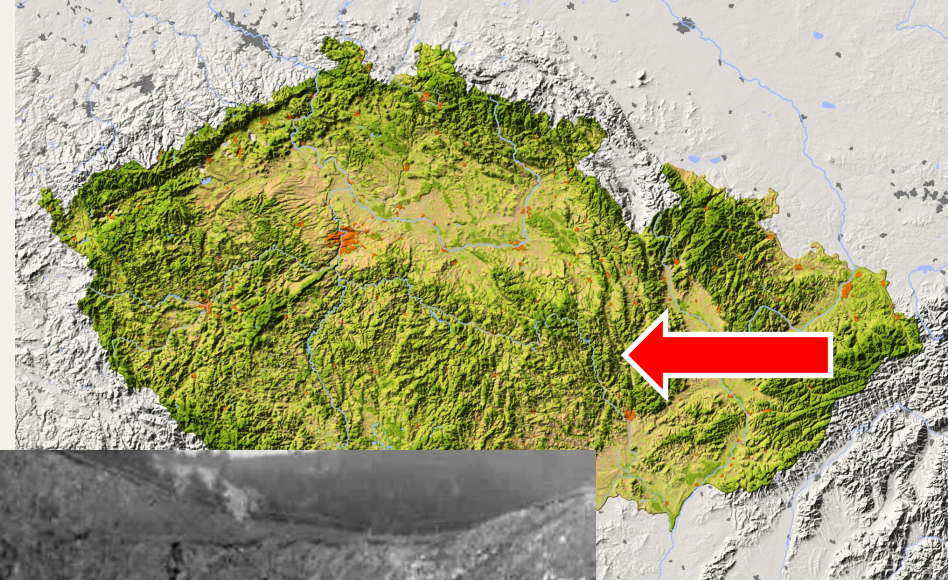
# Vranovské vrásky



# Údolí Jizery (Riegrova stezka)



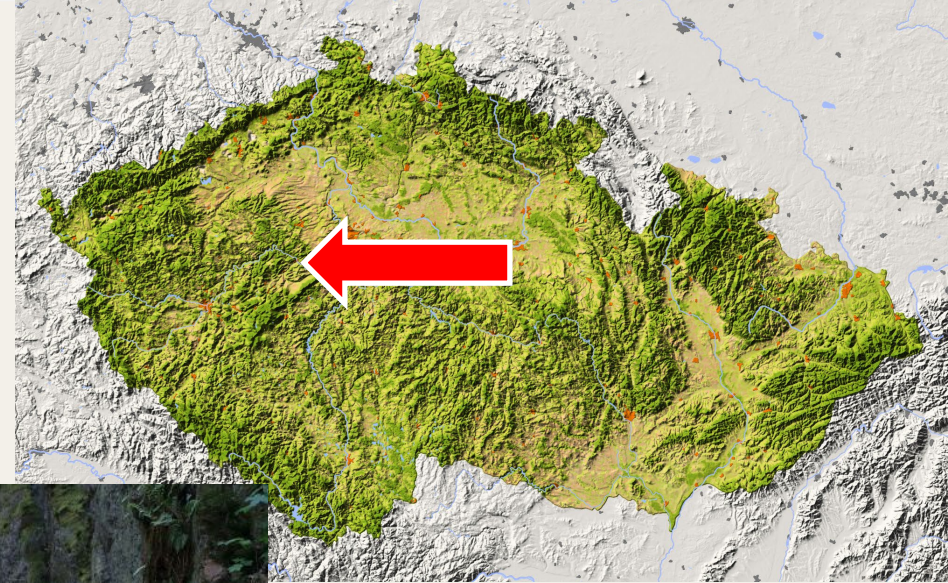
# Modré mramory



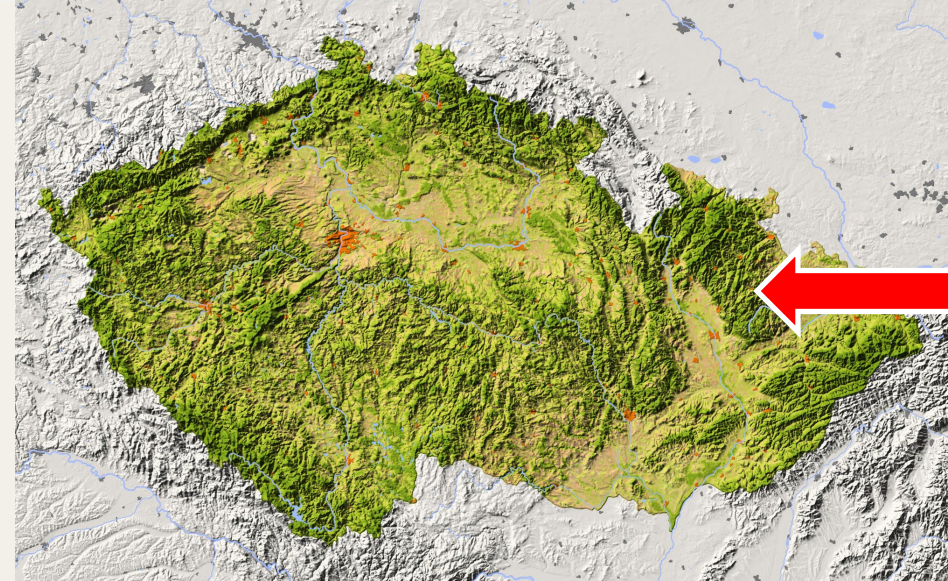


# SEDIMENTÁRNÍ HORNINY

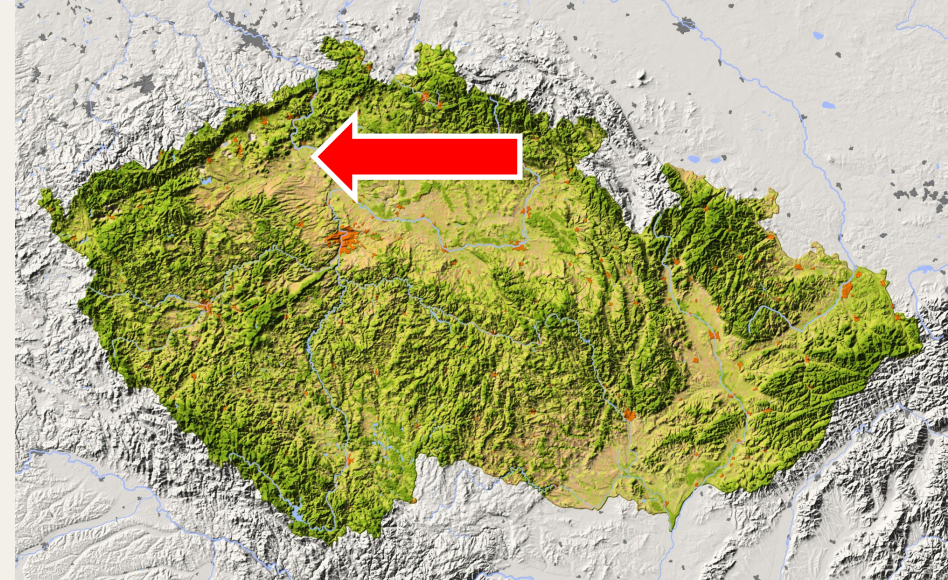
# Barrandien



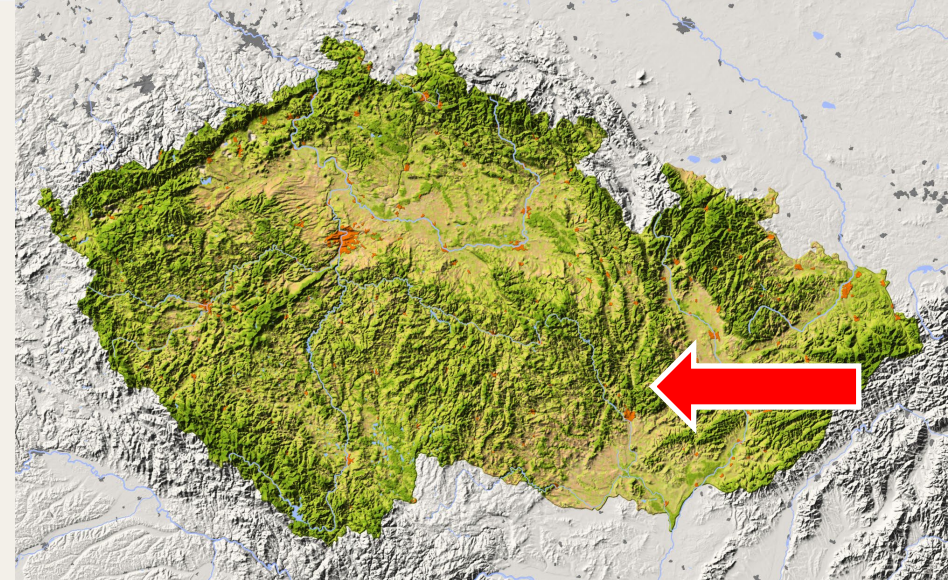
# „Krajina břidlice“



# Dobrčice



# Rudice Seč

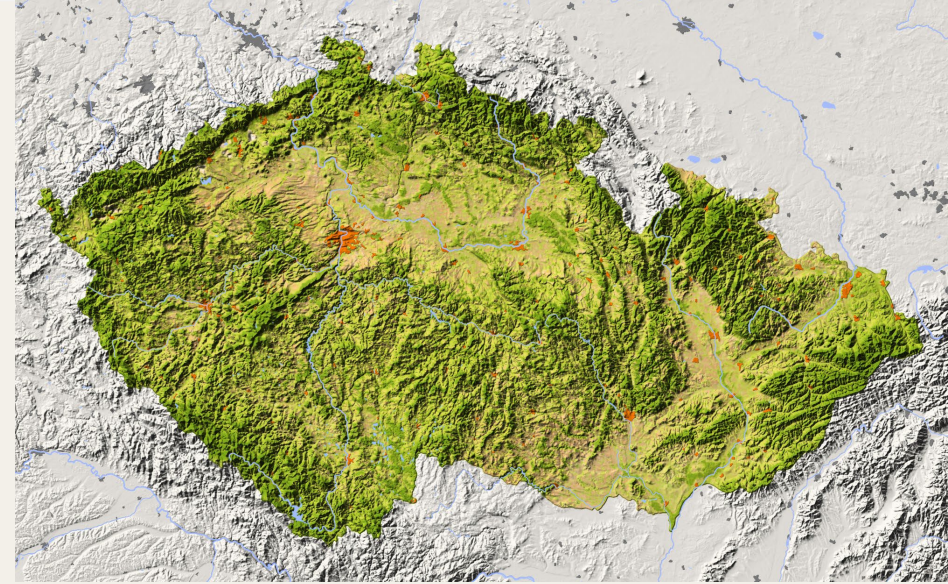




# Megoňky

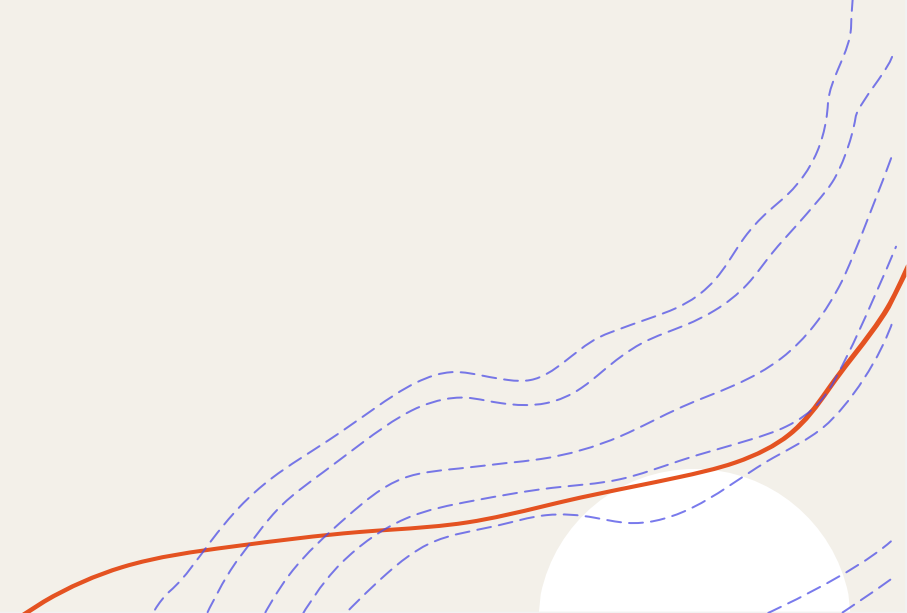


# Spraše

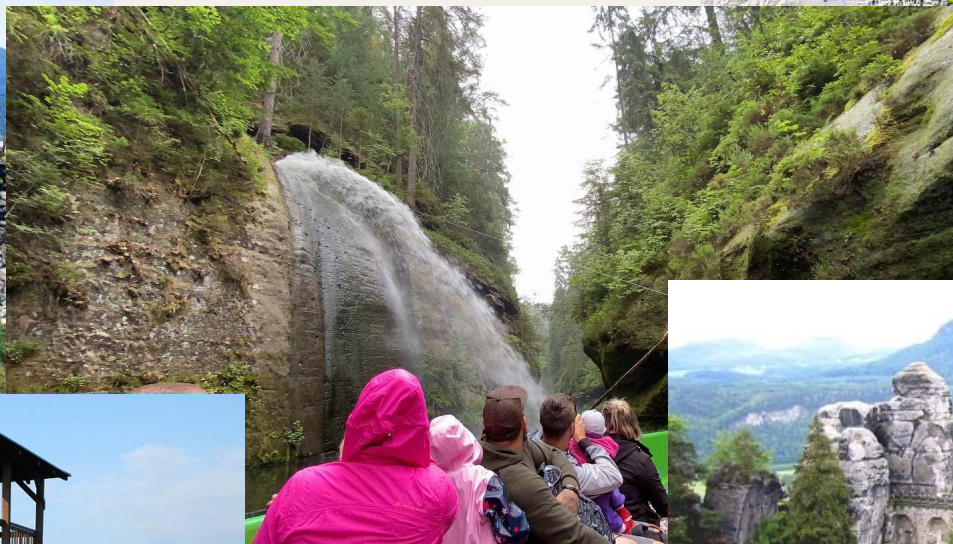




# SKALNÍ MĚSTA



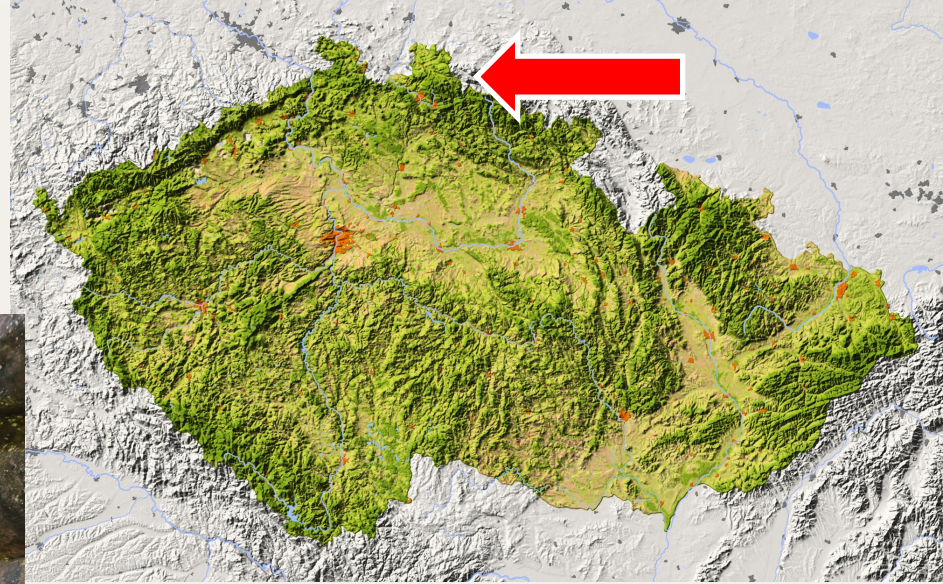
# Česko-Saské Švýcarsko



# Broumovsko



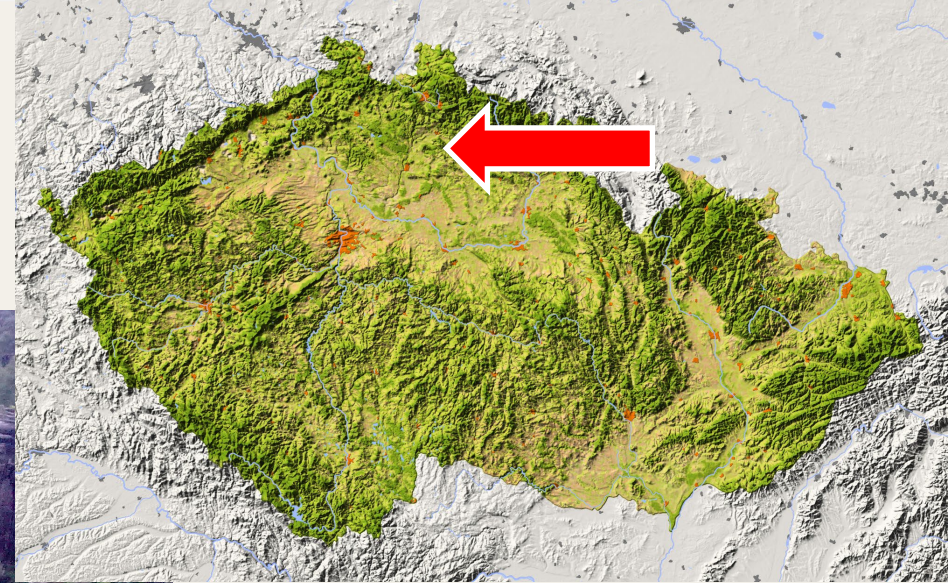
# Stolové hory



# Kokořínsko



# Český ráj

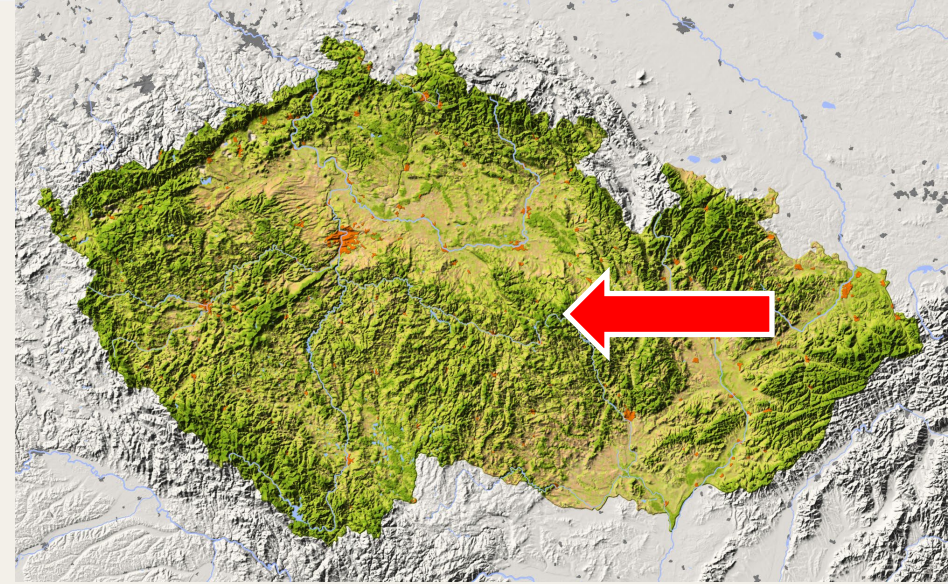




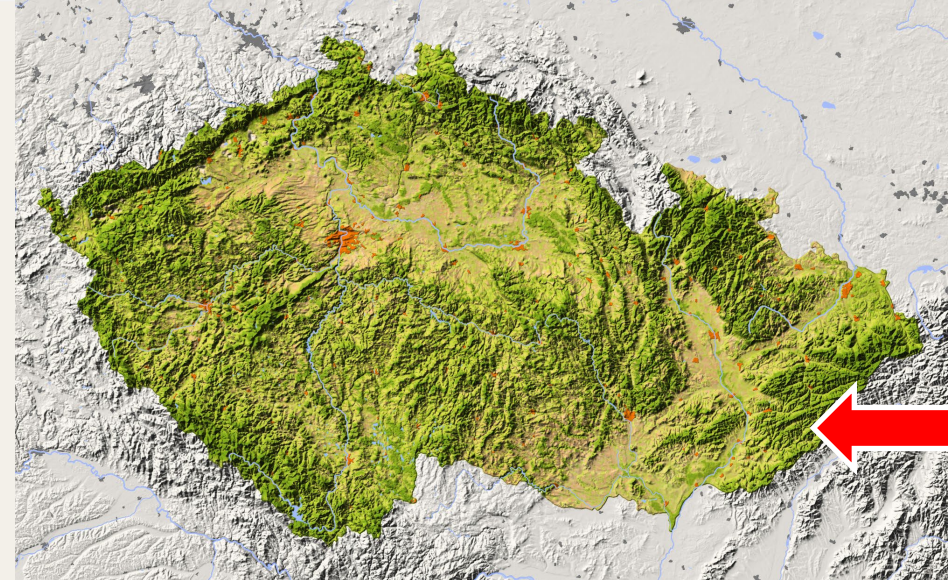
# Pivnické rokle



# Toulovcovy maštale

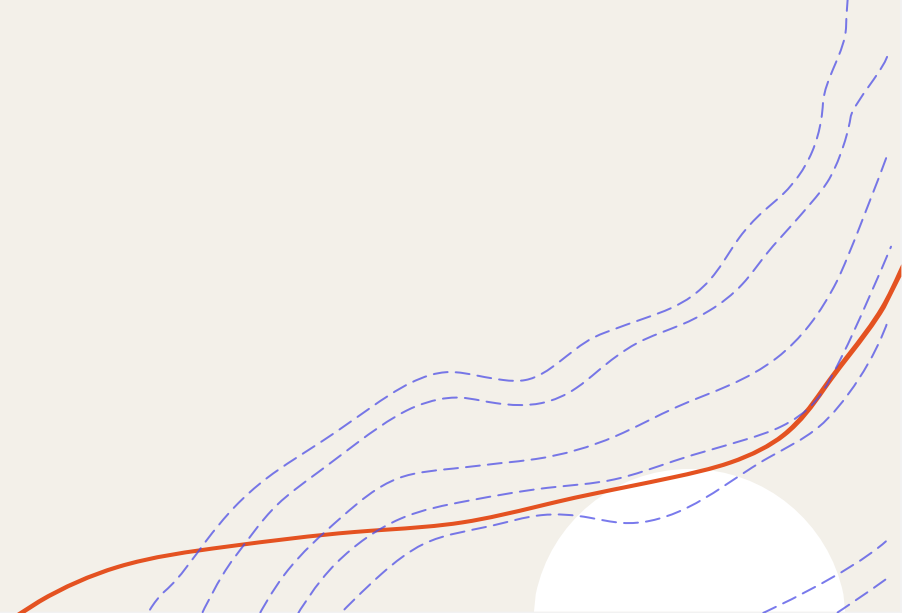


# Půlčínské skály

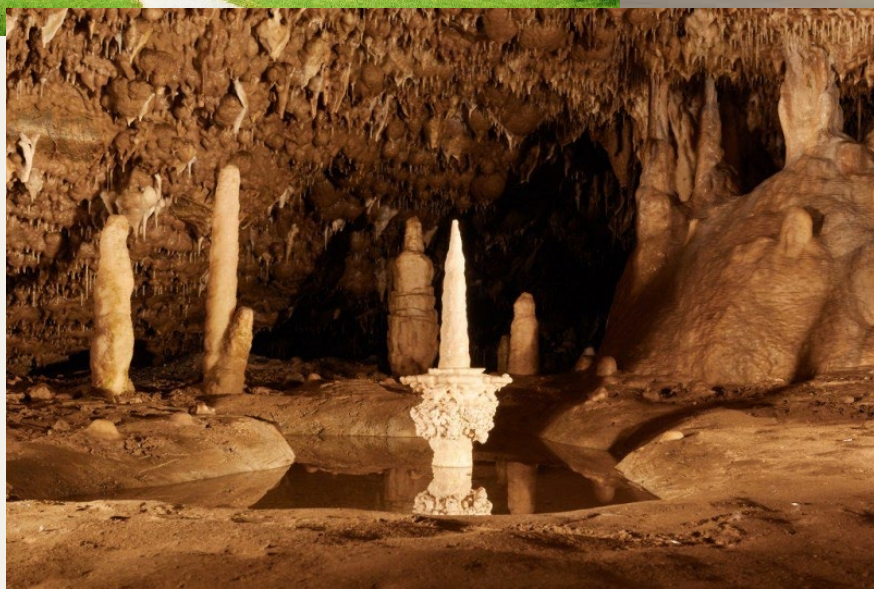
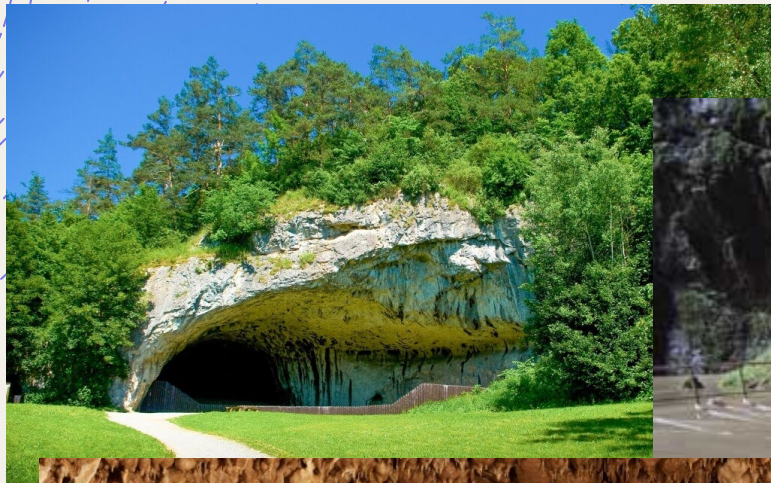




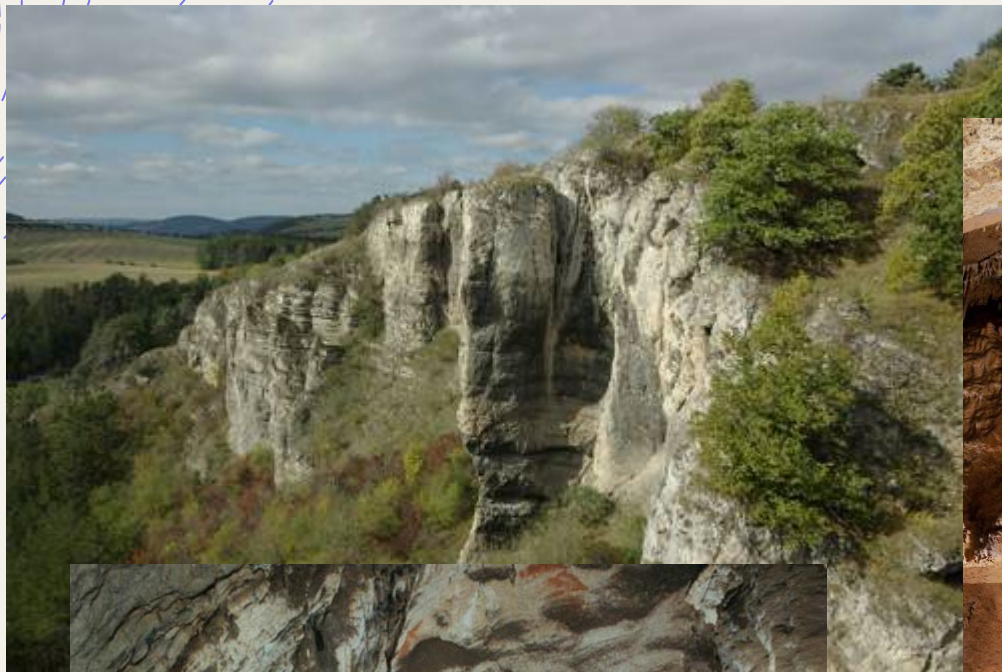
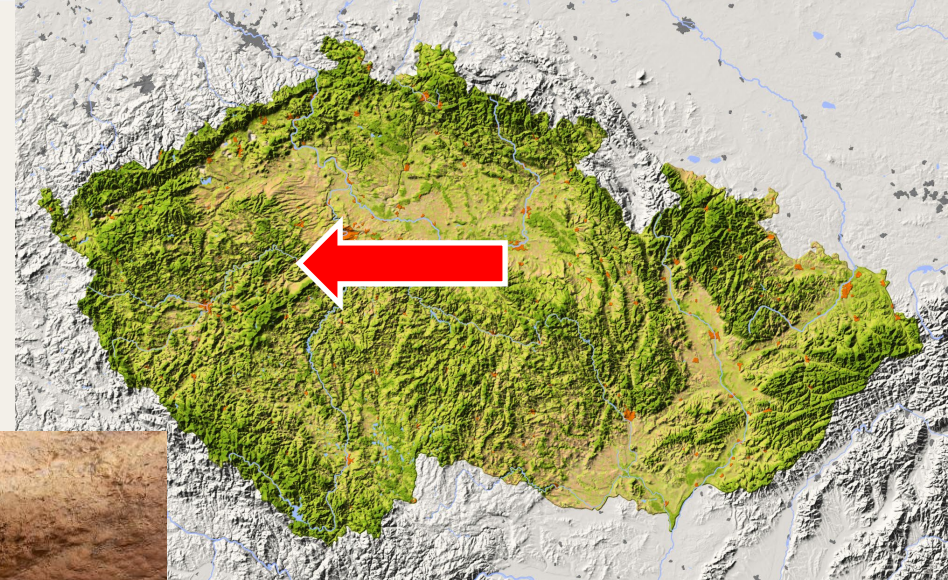
**KRAS**



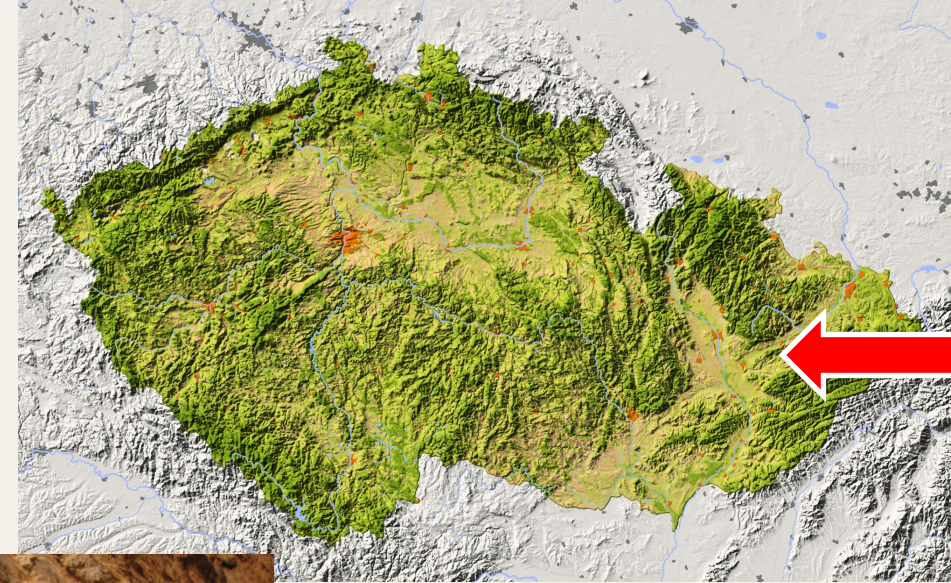
# Moravský kras



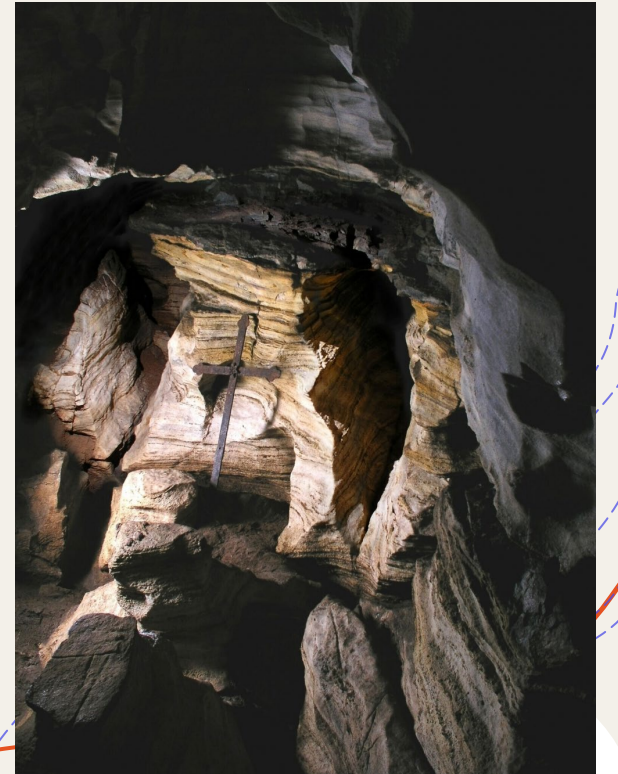
# Český kras



# Hranický kras

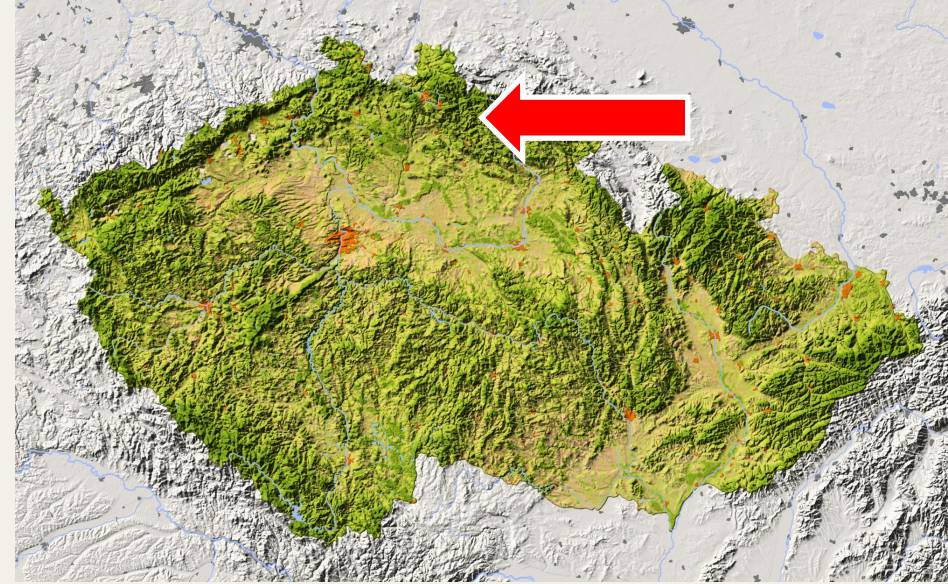


# Chýnovský kras

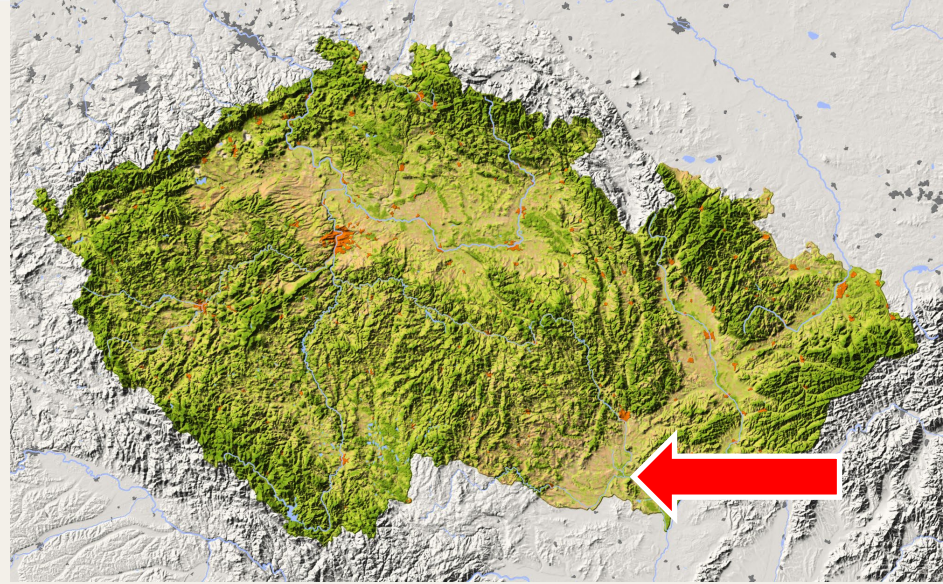




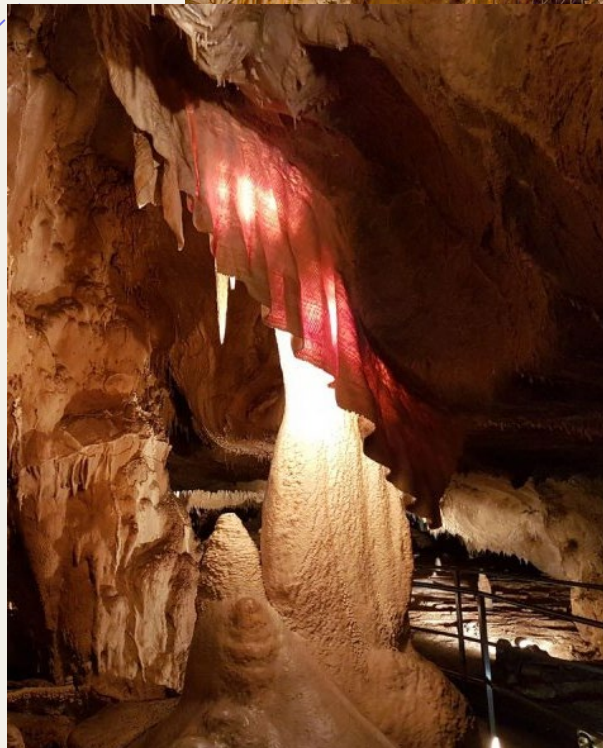
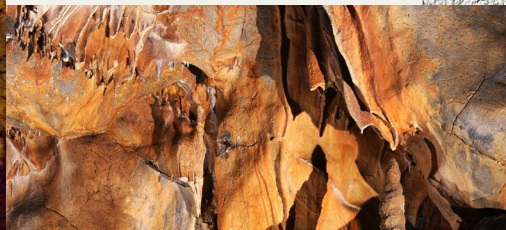
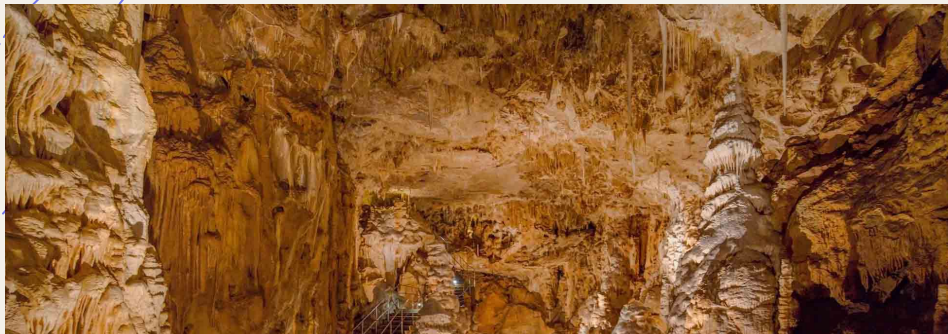
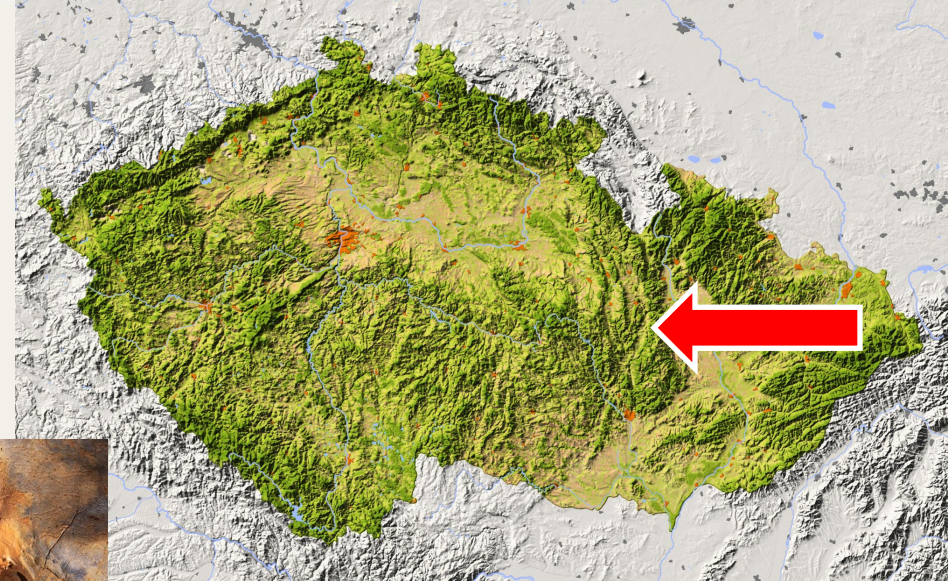
# Bozkov



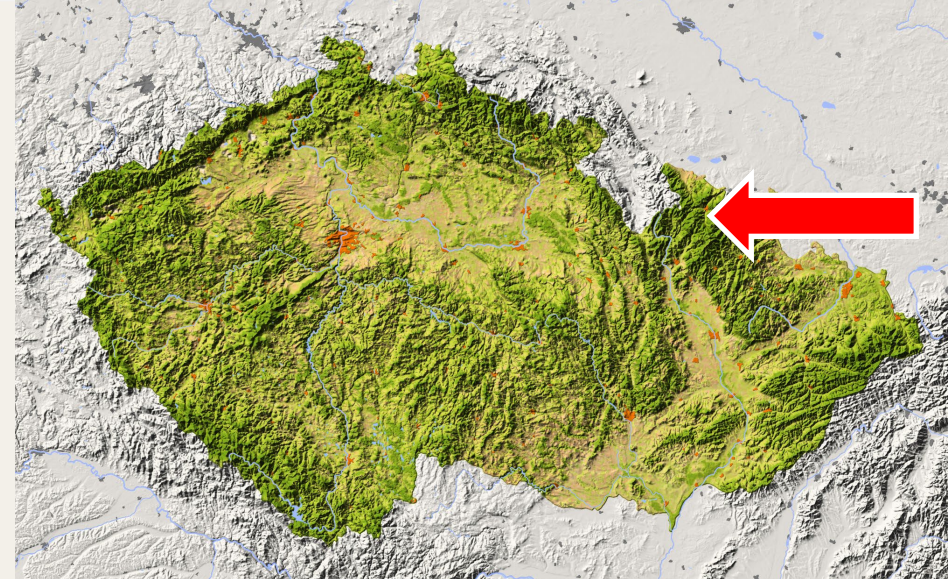
# Turola



# Středomoravské krasy

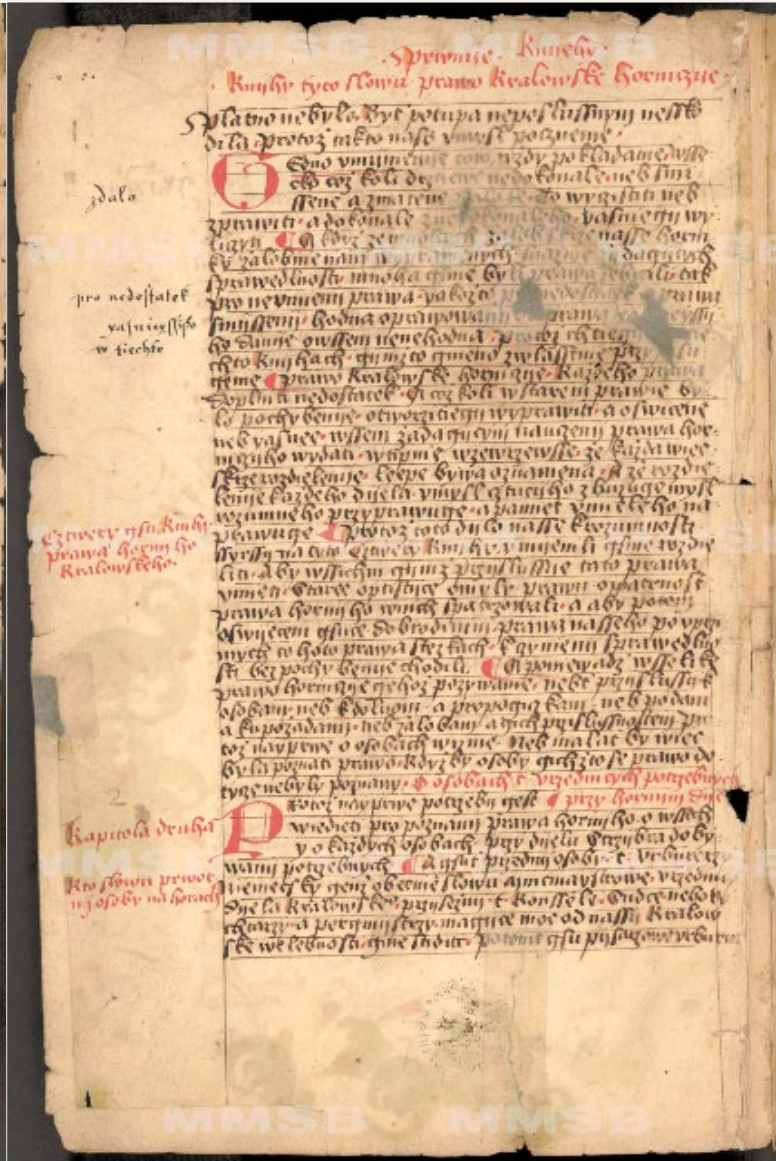


# Jesenický kras





# Semestrální soutěž



Jaký historický dokument je na obrázku?

Kdo ho vydal a jaký má pro nás smysl?