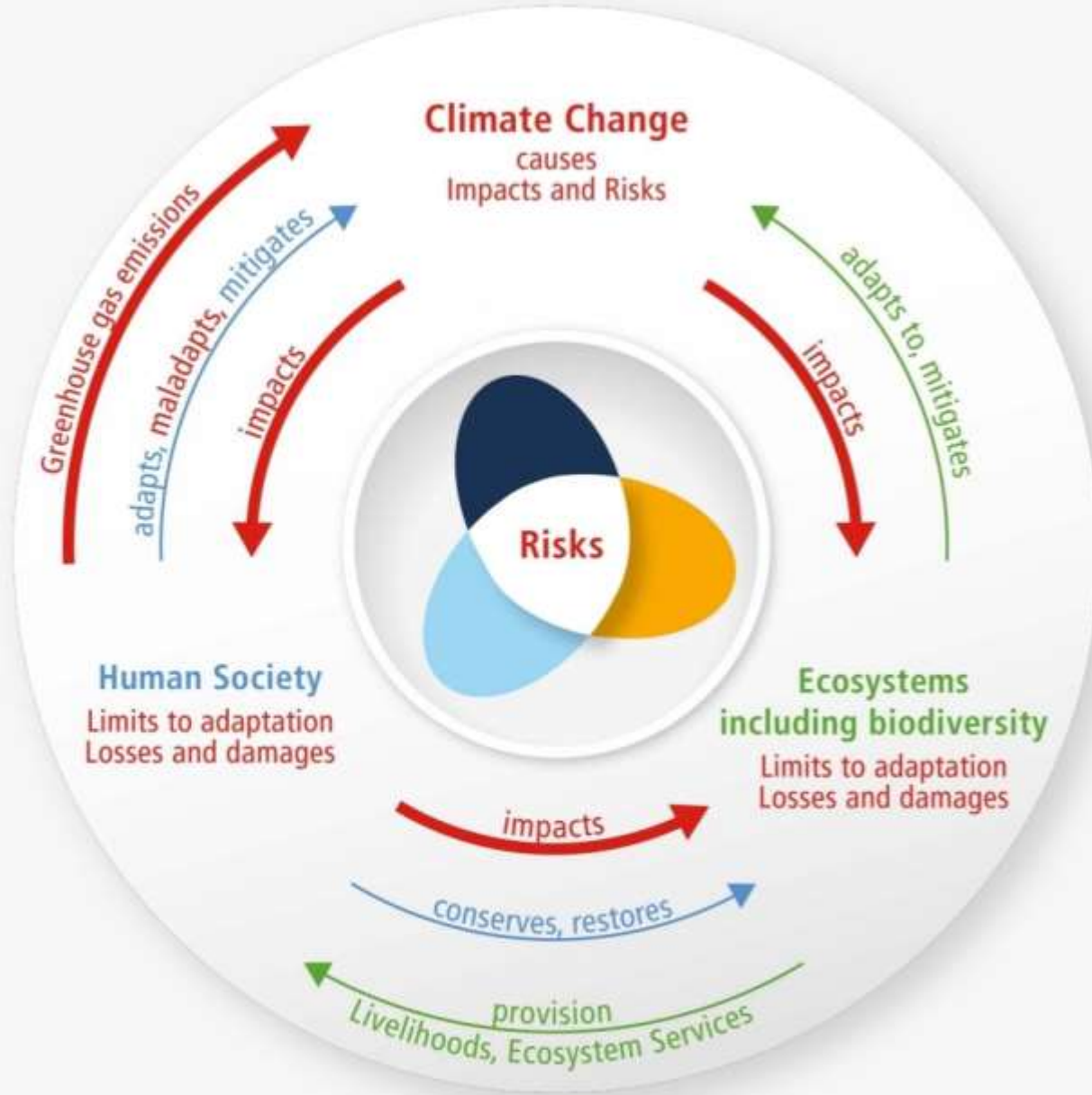




AR6 Climate Change 2022: Impacts, Adaptation and Vulnerability

SEKCE A + B

ŠIMON BASÍK, EMMA HEGEROVÁ



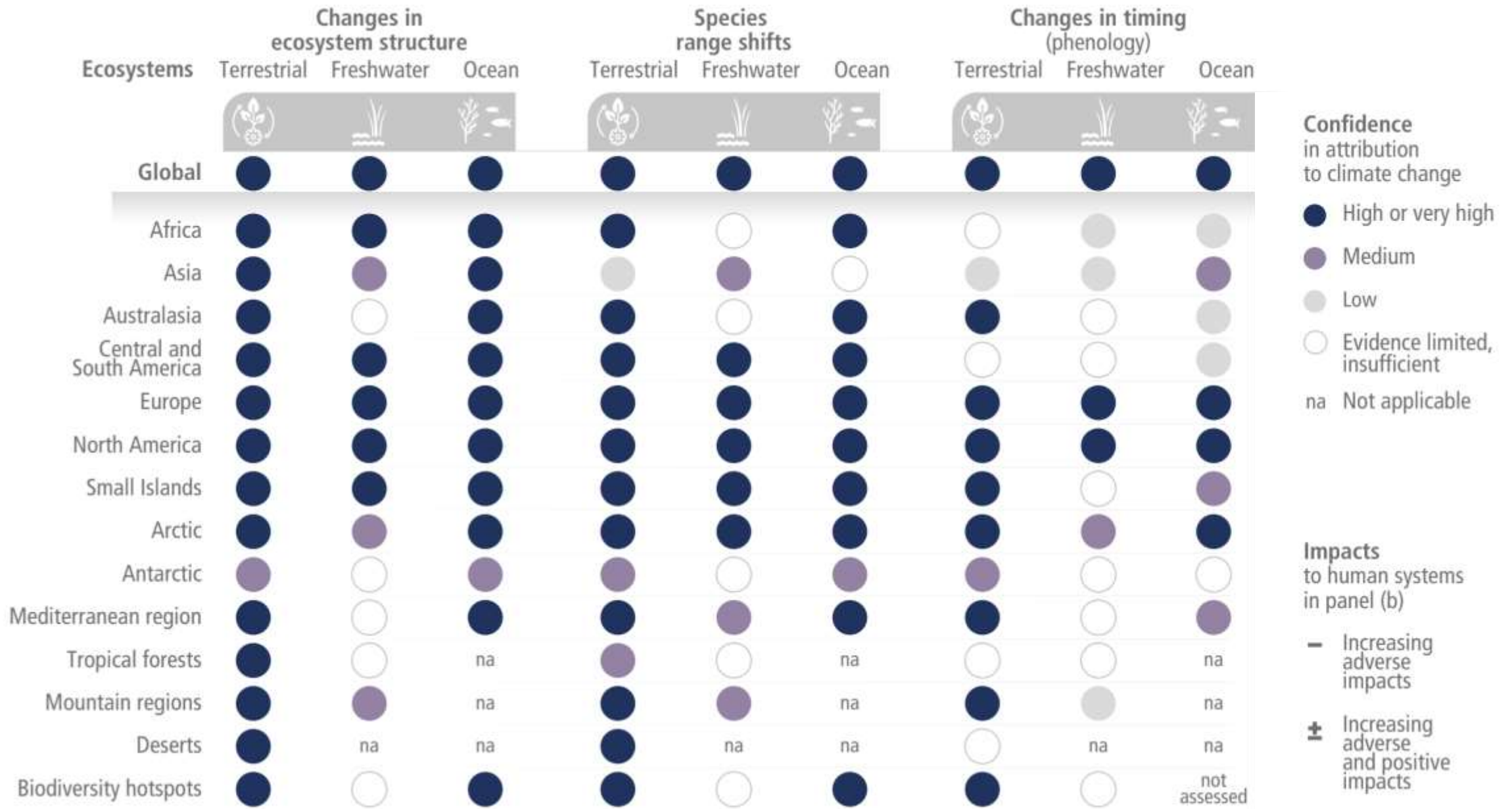
The risk propeller shows that risk emerges from the overlap of:

- Climate hazard(s)
- Vulnerability
- Exposure

...of human systems, ecosystems and their biodiversity

Pozorované dopady změny klimatu





Human systems	Impacts on water scarcity and food production				Impacts on health and wellbeing				Impacts on cities, settlements and infrastructure			
	Water scarcity	Agriculture/crop production	Animal and livestock health and productivity	Fisheries yields and aquaculture production	Infectious diseases	Heat, malnutrition and other	Mental health	Displacement	Inland flooding and associated damages	Flood/storm induced damages in coastal areas	Damages to infrastructure	Damages to key economic sectors
Global	+	-	○	-	-	-	-	-	-	-	-	-
Africa	-	-	-	-	-	-	-	-	-	-	-	-
Asia	+	+	-	-	-	-	-	-	-	-	-	-
Australasia	+	-	+	-	-	-	-	not assessed	-	-	-	-
Central and South America	+	-	+	-	-	-	not assessed	-	-	-	-	-
Europe	+	+	-	+	-	-	-	-	-	-	-	-
North America	+	+	-	+	-	-	-	-	-	-	-	-
Small Islands	-	-	-	-	-	-	-	-	-	-	-	-
Arctic	+	+	-	-	-	-	-	-	-	-	-	+
Cities by the sea	○	○	○	-	○	-	not assessed	-	○	-	-	-
Mediterranean region	-	-	-	-	-	-	not assessed	-	+	-	○	-
Mountain regions	+	+	-	○	-	-	-	-	-	na	-	-

Zranitelnost lidstva a ekosystémů

ROZDÍLY NAPŘÍČ REGIONY

NIČENÍ EKOSYSTÉMŮ ZVYŠUJE ZRANITELNOST LIDÍ

VLIV NEKLIMATICKÝCH FAKTORŮ

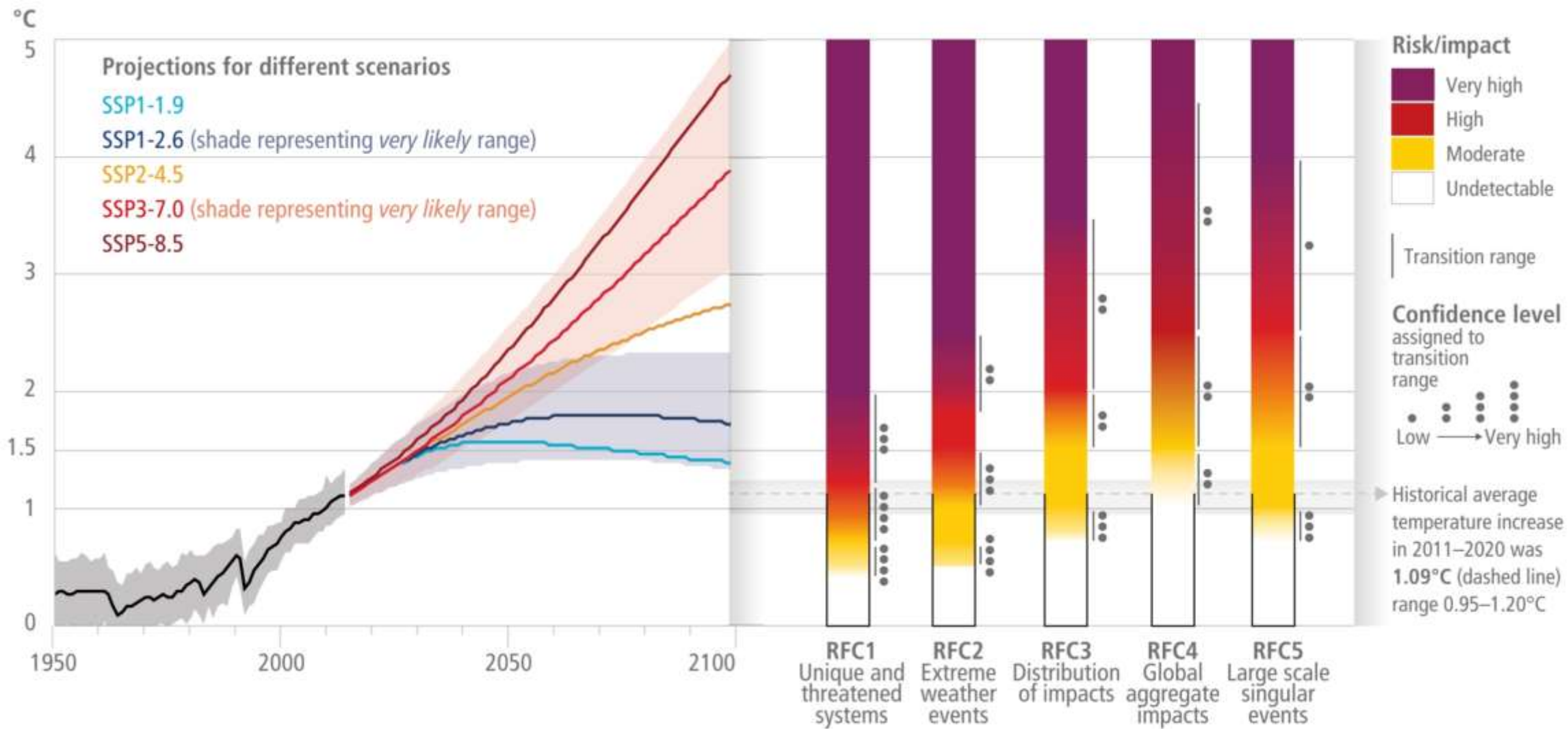
BUDOUCNOST ZRANITELNOSTI



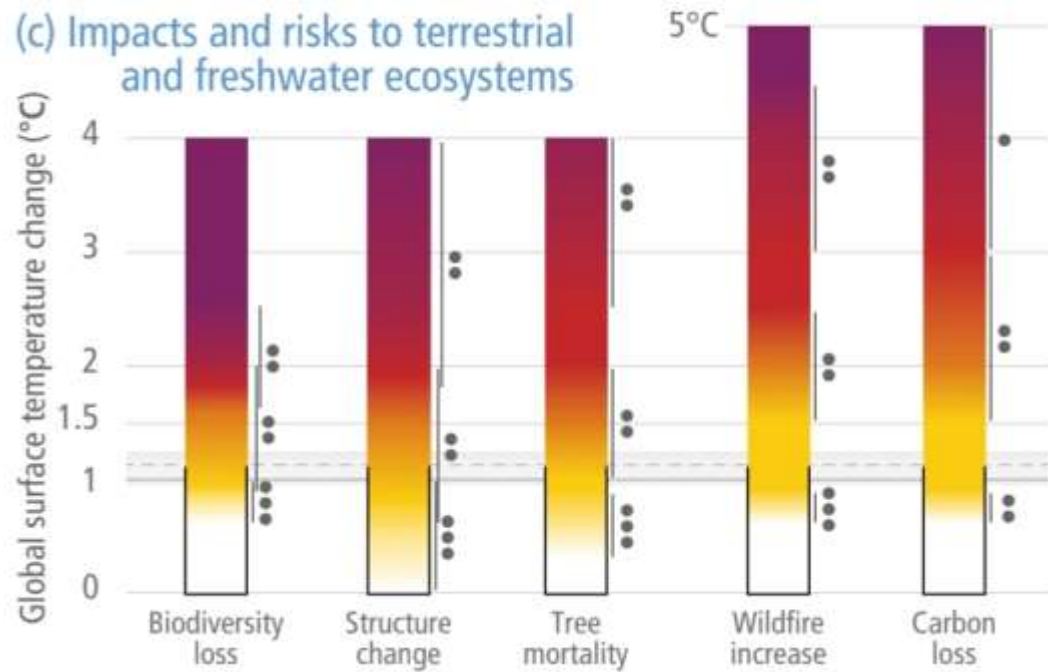
Krátkodobé
(2021-2040)

Střední a
dlouhodobé
(2041-2100)

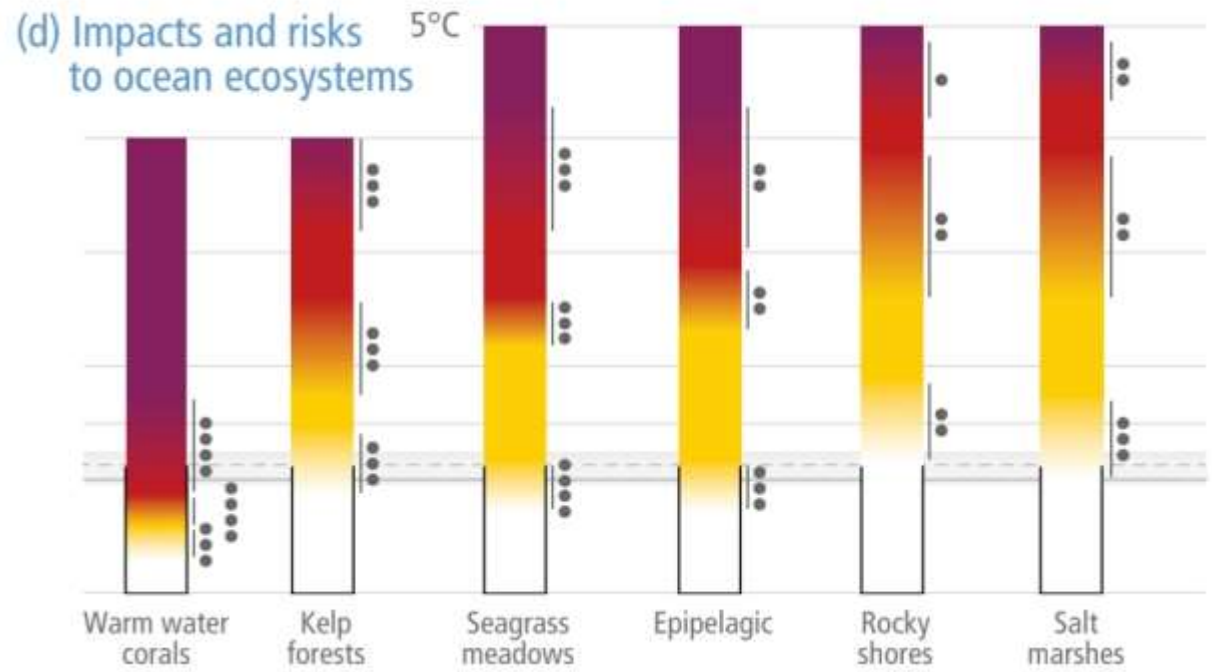
Rizika



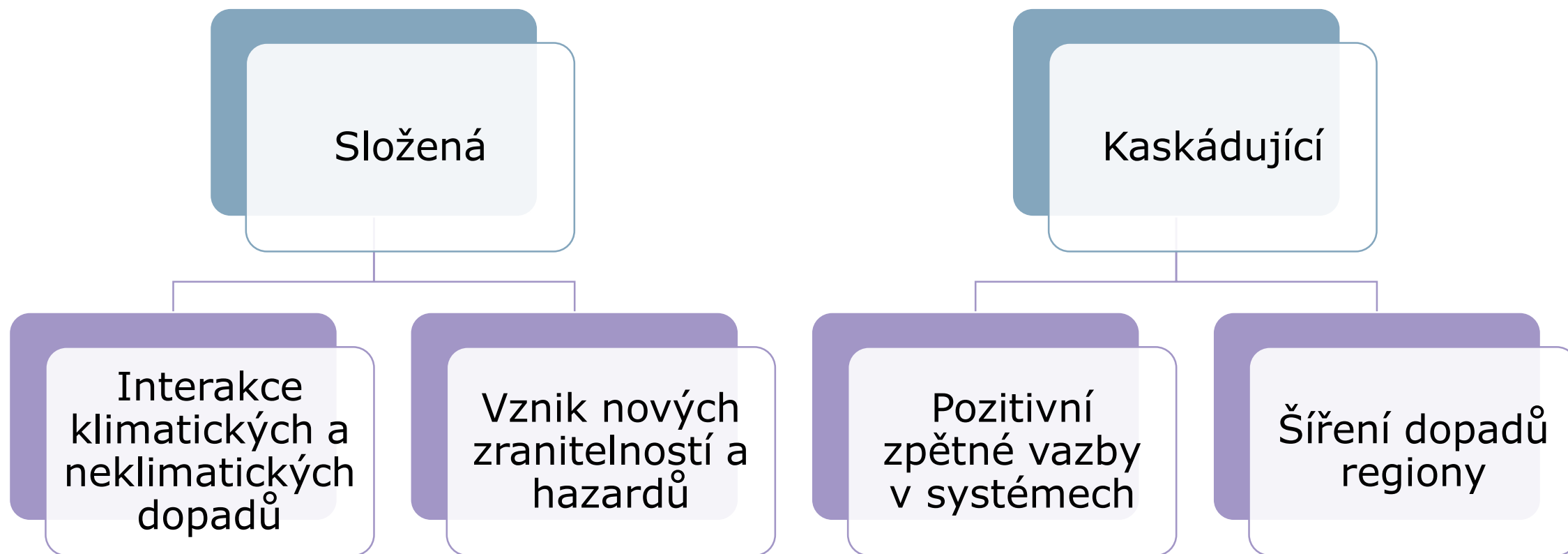
(c) Impacts and risks to terrestrial and freshwater ecosystems



(d) Impacts and risks to ocean ecosystems



Komplexní rizika



Dopady krátkodobého překročení

Trvalé změny
přímo uměrné
překročení

Kolaps
vysoko-
uhlíkových
společenstev