

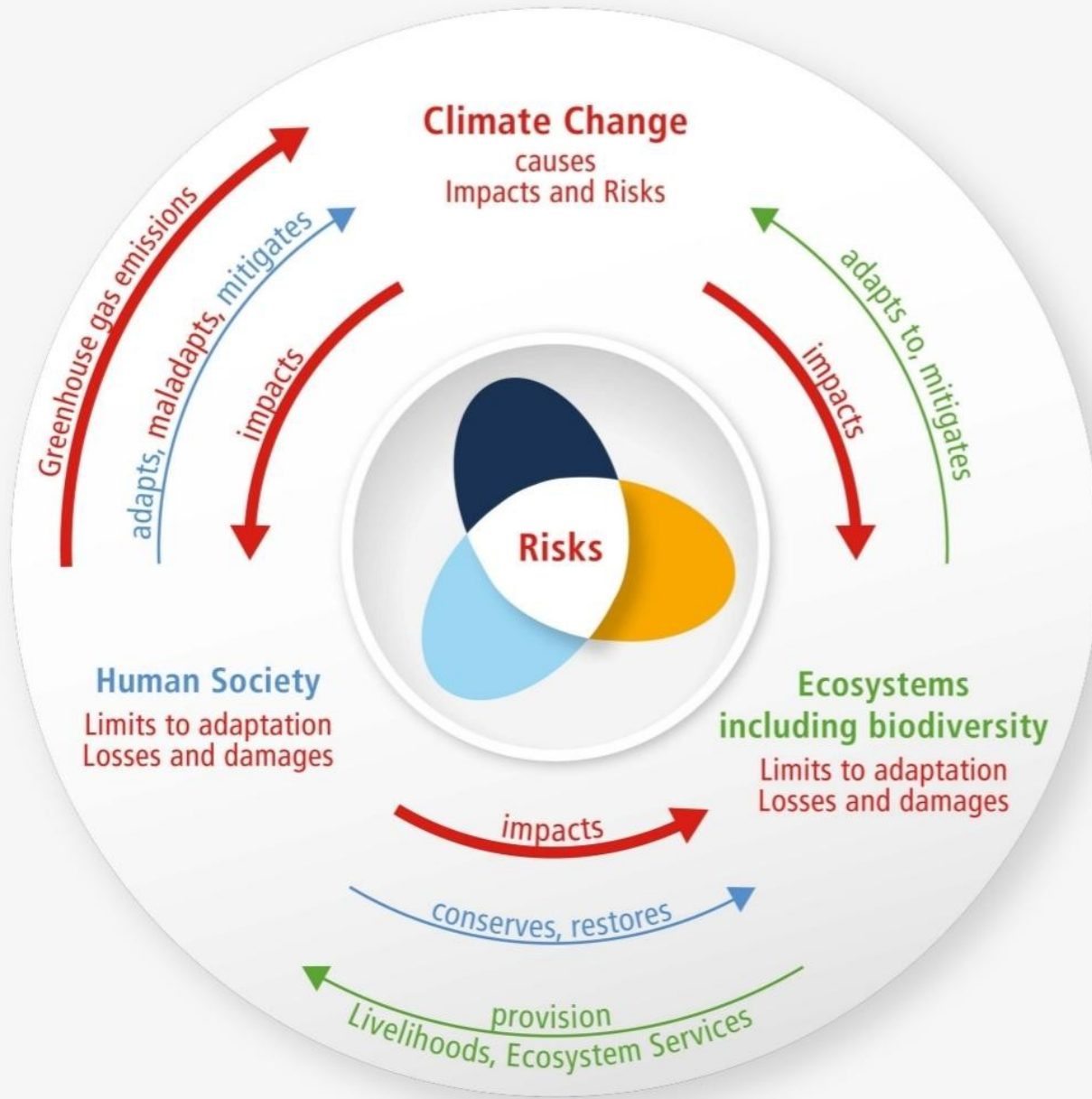
# AR6 Climate Change 2022: Impacts, Adaptation and Vulnerability

---

SEKCE A + B

ŠIMON BASÍK, EMMA HEGEROVÁ





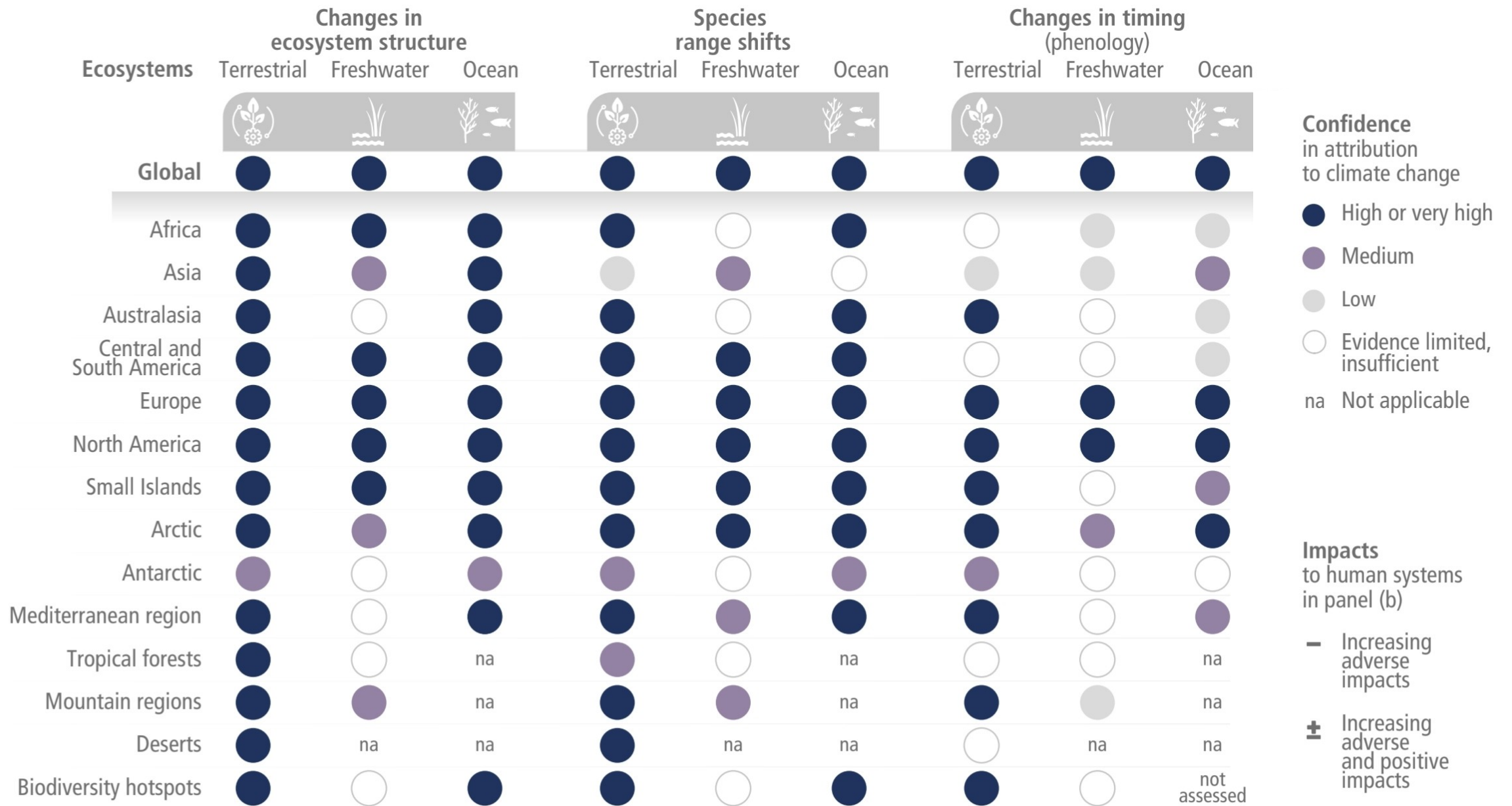
The risk propeller shows that risk emerges from the overlap of:

- Climate hazard(s)
- Vulnerability
- Exposure

...of human systems, ecosystems and their biodiversity

# Pozorované dopady změny klimatu





Human systems	Impacts on water scarcity and food production				Impacts on health and wellbeing				Impacts on cities, settlements and infrastructure			
	Water scarcity	Agriculture/crop production	Animal and livestock health and productivity	Fisheries yields and aquaculture production	Infectious diseases	Heat, malnutrition and other	Mental health	Displacement	Inland flooding and associated damages	Flood/storm induced damages in coastal areas	Damages to infrastructure	Damages to key economic sectors
Global	+	-	○	-	-	-	-	-	-	-	-	-
Africa	-	-	-	-	-	-	-	-	-	-	-	-
Asia	+	+	-	-	-	-	-	-	-	-	-	-
Australasia	+	-	+	-	-	-	-	not assessed	-	-	-	-
Central and South America	+	-	+	-	-	-	not assessed	-	-	-	-	-
Europe	+	+	-	+	-	-	-	-	-	-	-	-
North America	+	+	-	+	-	-	-	-	-	-	-	-
Small Islands	-	-	-	-	-	-	-	-	-	-	-	-
Arctic	+	+	-	-	-	-	-	-	-	-	-	+
Cities by the sea	○	○	○	-	○	-	not assessed	-	○	-	-	-
Mediterranean region	-	-	-	-	-	-	not assessed	-	+	-	○	-
Mountain regions	+	+	-	○	-	-	-	-	-	na	-	-

---

# Zranitelnost lidstva a ekosystémů

ROZDÍLY NAPŘÍČ REGIONY

NIČENÍ EKOSYSTÉMŮ ZVYŠUJE ZRANITELNOST LIDÍ

VLIV NEKLIMATICKÝCH FAKTORŮ

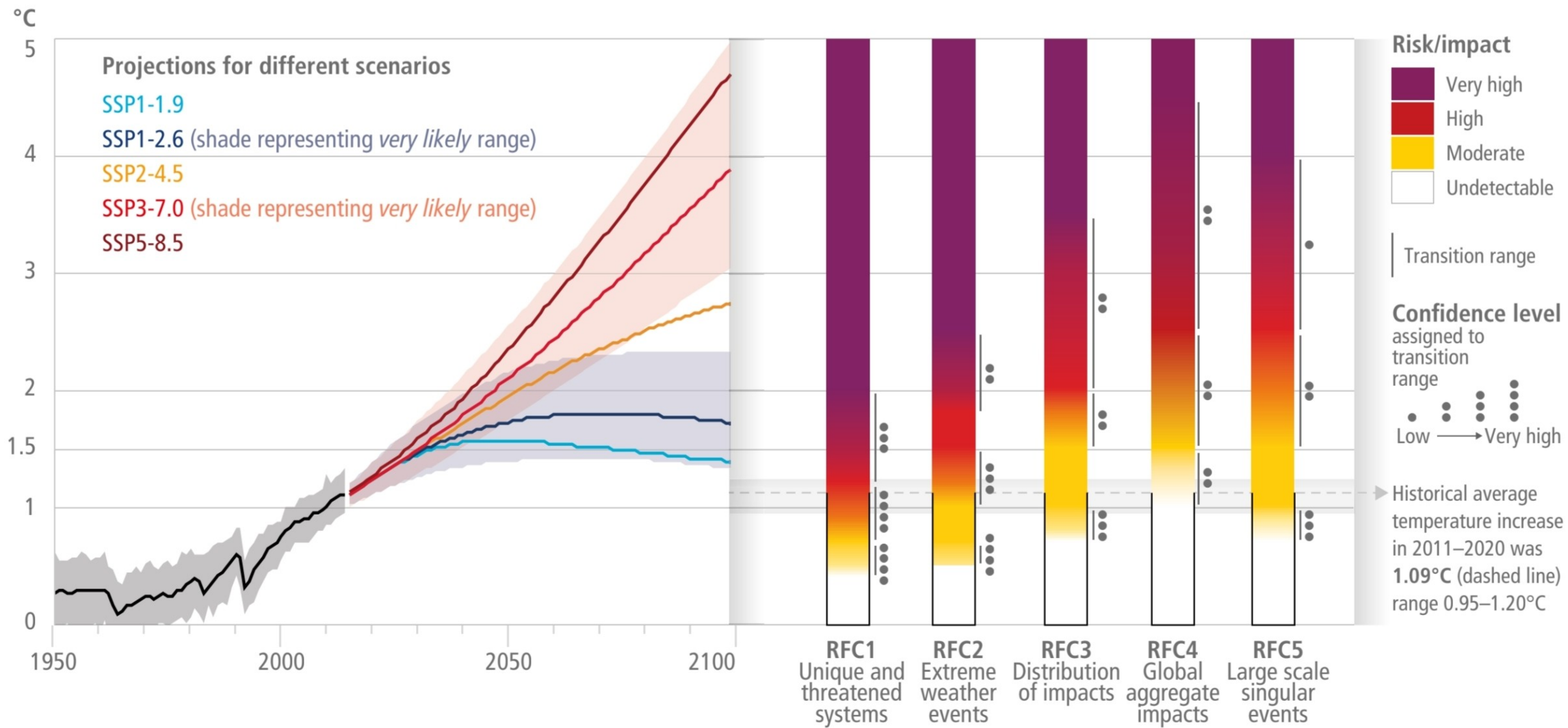
BUDOUCNOST ZRANITELNOSTI

Krátkodobé  
(2021-2040)

Střední a  
dlouhodobé  
(2041-2100)

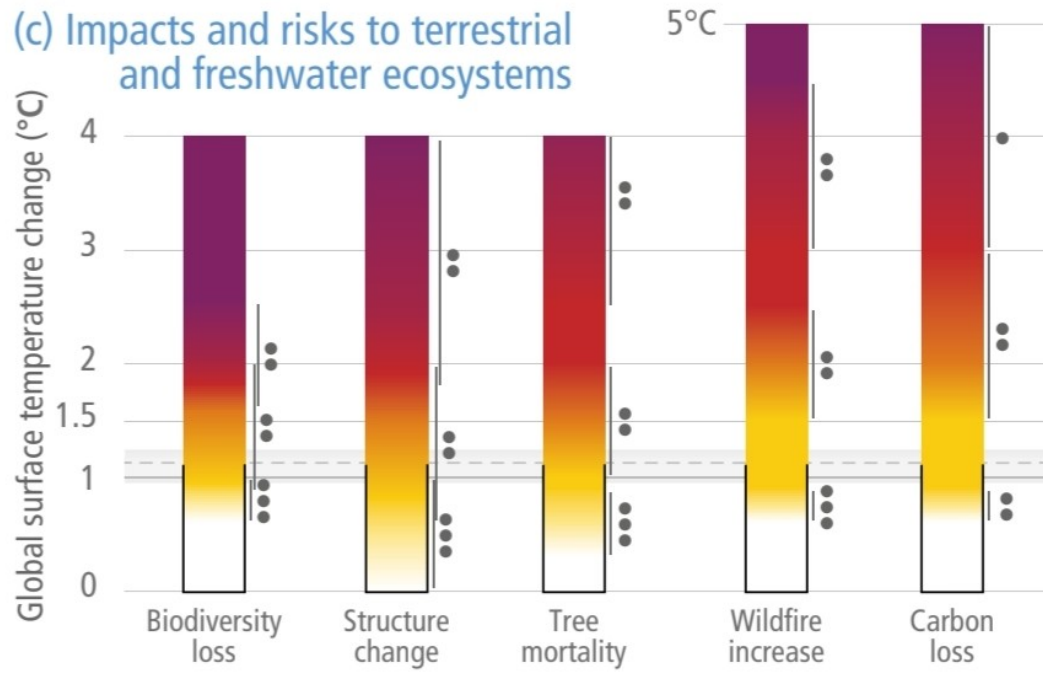
# Rizika

---

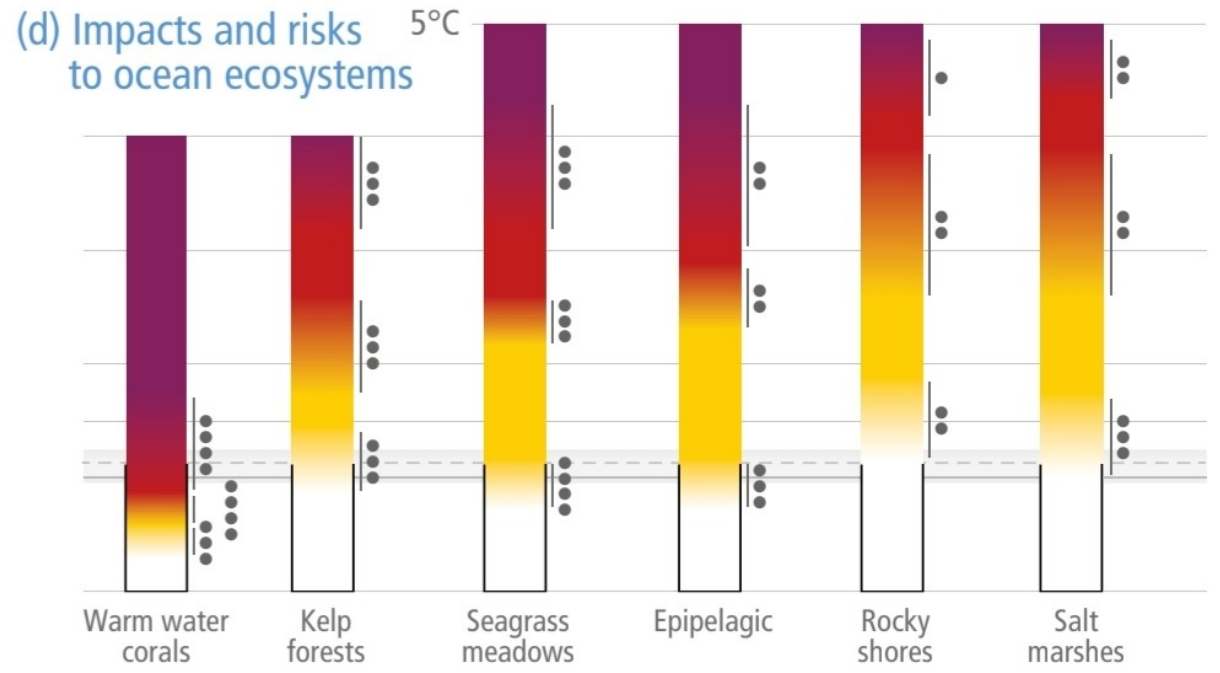




(c) Impacts and risks to terrestrial and freshwater ecosystems

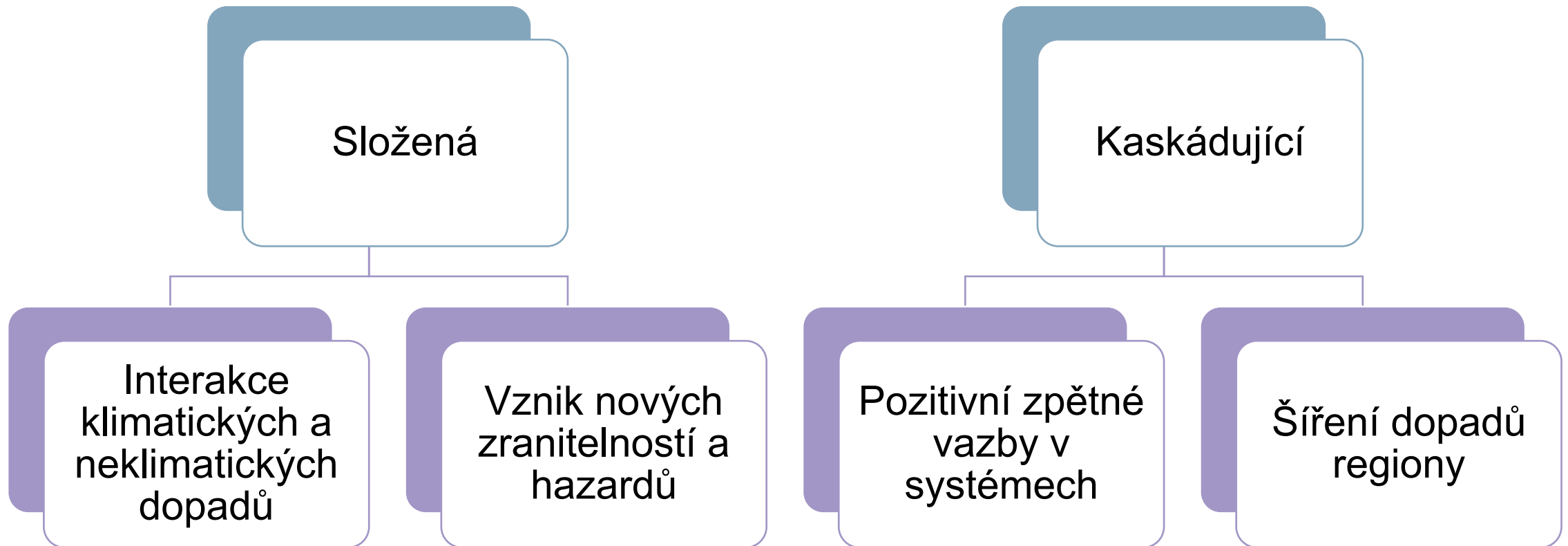


(d) Impacts and risks to ocean ecosystems



# Komplexní rizika

---



---

## Dopady krátkodobého překročení

Trvalé změny  
přímo uměrné  
překročení

Kolaps vysoko-  
uhlíkových  
společenstev