

Landscape (shape) evaluation



RNDr. Martin Culek, Ph.D.
Geographical Institute,
Fac. of Science, Masaryk University,
Brno

Why this course?

- 1. Limitations in „pure“ Science ...
- 2. Sensitivity to the Nature and Landscape ...
- 3. Values of Landscape for Man and Nations Identity
- 4. Endagerement of Landscapes by Global Changes (Climatical - Vegetational, Production – Industry, Cities, Agriculture ...)

What it is ... Landscape?

- History in the Central Europe: Old German word „Landschaft“ – area cultivated by one free small nobleman
- = space visible from one place
- Landscape is a Human phenomenon – your understandable area, closer than „Other World“ – linked with concept of „Homeland“.
- Landscape could be characterized from view of areas:
- Geography view - Hierarchy: Elementar Landscape unit „top“ (ca 10 m² to 10 ha) – Landscape of the World
- Laic (lay) view: Km² – 1000 km² + must include the horizon.
- Political definition of Landscape (European case - Landscape Convention, y. 2001): „A Landscape“ means part of the territory perceived by the inhabitants, its character is a result of influence of natural and/or human activities, and its interconnections.

Views on a Landscape

- **Landscape could be characterized from views** (views with asterix * are important for Landscape shape evaluation **and to Exam**):
- **Problem** – task to be solved
- **System** = structure and its functioning
- **Natural environment** * - mountains, plains, valleys, rocks, vegetation, water
- **Biotops, Habitats**
- **Ekosystems services**
- **Riches (wealth)** – changes during centuries
- **Artefact** * - praehistoric remnants, in Europe medieval, renesance, barocco, 18. cent.
- **Ideology** * - paganian old trees on hills, Monument Valley, rocks, medieval churches on hills or with high towers, cross (crucifix) in Landscape, communists cow house, a high white hospital in Brno, memorials, ideological billboards.
- **Power** * - „on a Castle and under a Castle“, Lednice-Valtice Composed Landscape on southern Moravia of former Liechtenstein manor (dominion)
- **Esthetics** * - out of geographical competence, but important, necessary to try
- **Emotions** * – incl. „impresive Lanscapes“ – positive or negative (by J. Lów)
- **Spirit of a locality** * (**genius loci**) – not visible, connected with history, important persons, extraordinary composition of that Landscape

Not necessary to the exam



Zuma Rock, 350 m high, Nigeria, close the capital Abuja, Seat of Godineses, extreme high genius loci – rock itself + myths, legends, porta to the Capital City.

Structures of the Landscape

- Primal structure – natural (geological features, geomorphological (rocks, mountains, valleys ...))
- Secondary structure – Landuse (fields, forests, villages ...)
- Tertiary structure – limits and intentions of Man, not directly visible in a L. (Territorial planning, protected areas, ...)
- Quarterly structure (?) – spirit of the place, famous rocks, legends, network of cloisters, visibility of churches ...)
- All the structures are to be used in so called Landscape Plan – should organize the Landscape so it will preserve its identity for people - homeland, help to develop values and beauties.
- Landscape Plan should be part of complex Territorial planning.

History of Interest in the Landscape_1

- Prehistory (til. 5,000 BP) Landscape = part of Human life, accepted automatically, important Dangerous x created by God
- Oldest Civilizations (after 5,000 years BP) - Egypt, India, China, ..., in Europe Antic civilization (after 2,000 y. BP) – first devastations of Landscape, e.g. Cutting of forest => Water Erosion devastation =>
- => Poets: Missing nice deep forests, shade ...,
- Medieval era : Orient (China) - Painting in the Mountains – evaluation of beauty
- in Europe: Nature = pagan, negative, danger of return to pagany.
- Renaissance (16. Cent. and later): First great change: Parks close to Castles = first use of Landscape as something nice, first paintings of people in a Landscape

Not necessary to the exam

Renaissance, 16. Cent., Villa Lante, Central Italy



Not necessary to the exam

Renaissance, 16. Cent., Bučovice, 35 km east of Brno



History of the interest in the Landscape_1 detail Medieval.

- Early Medieval Age in C. E.: Paganic, holy groves, figures of Goodness, sacral fires, sacrifice
- Czech Republic : first christian population Great Moravia, ca 830 AD, but as late as 1092: change to widespread christianity = building many churches on formerly paganic places
- High medieval ages (13.-15. Cent.): Still fear of return of paganism – no pictures of Nature, no trees in cities. City = Holy Place, Place of Human and its God

Paintings in
Mts. —
epigonic
Lana Brest
China - like





History of Interest in the Landscape_2

- Baroque (17-18. Cent.): Parks, widespread painting of Landscapes, try to create Divine Landscape on the Earth.
- End of 18. Cent. (the Enlightenment): beginning of the industrial period - Time of second radical change of the „taste“ dealing with natural scenery:
- 19. Century: Pragmatism + Industrialization **x** Romanticism – favour of Wild Nature, beginning of tourism, climbing Mountains. First National Parks (1878 Yellowstone, USA).
- dirty industrial towns → Organizations for making beauty towns and the Landscape – planting parks and trees, alley
- 2nd half of 20. Cent. – Landscape protection by law, Landscape Plans, but still great damages, people escape from Countryside to Cities – in EU, N. America, Japan – abandoned Landscapes.
- 21. Cent. – international cooperation, Conventions

Landscape shape is changing mostly quickly.

Also in protected areas. Here some examples from Giant Mts. National park, Northern Czechia

These pictures not necessary to the exam



1920 – tops of Giant Mts., northern Bohemia. Still with meadows, pastures, few bushes, no trees. Foto: Wenzel Pfohl



LOUKY / WIESEN

2006 - agricultural use ended 60 years ago. Spread of spruce trees, bushes of mountain pine. Here in nature reserve, so ± OK



1937 - Western Giant Mts., after building of mountain road.
Parking in the nature. No everything was better.

Foto: Rudolf Slavík



2006 – private cars prohibited, only buses for tourists, or cable car. Being better. Notice spread of woods.



Wenzel Lahmer, 1905, AA

1905 - Almost natural mountain creek, only narrow dirty road.

Foto: Wenzel Lahmer



VODOTEČE / WASSERLÄUFE

2006 – Though in National Park, the creek and road was industrially changed. Mountain channel, almost no nature. Bad.



Hans Bönsch, 1929, AA

1929 Former pasture part of village. Notice an absence of trees in open area. Notice the agricultural architecture. Foto Hans Bönsch



2006 - Almost only recreational use. Trees spreading and covering everywhere. Only part of area is visible. Change of architecture – types from other mountains in Europe. Bad.



Wenzel Pfohl, •1935, AA

1935 - Main village Špindlerův Mlýn. Beginning of recreational houses buildings, but open space dominates.

Foto Wenzel Pfohl



2006 Recreational business, mass winter ski recreation, blocks of flats. And overgrowing, Landscape not good visible. Mostly bad.

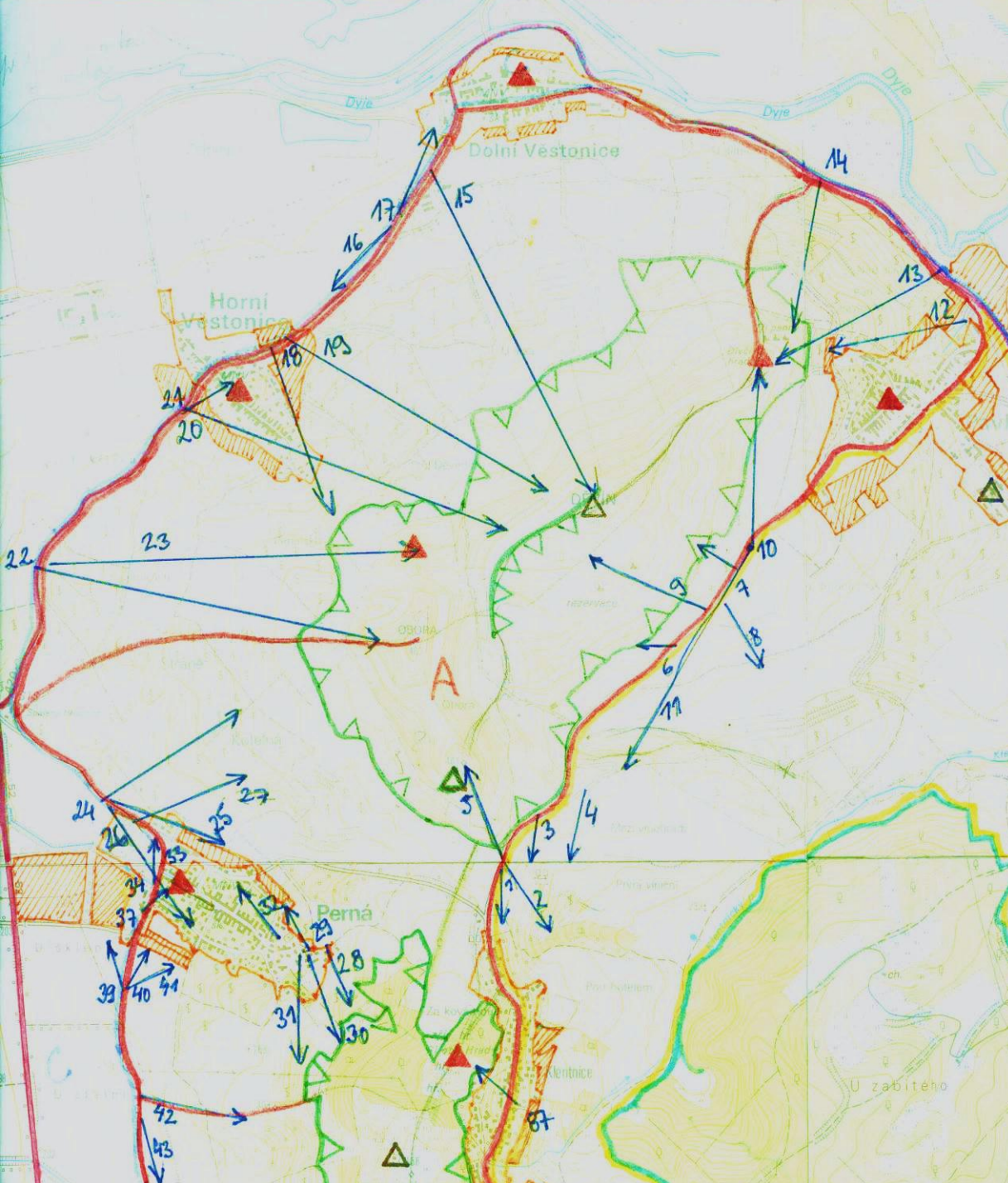


1934, SOKA Trutnov

1934 - Former German inhabitation. Žaclěř – Rýchory.
Foto SOKA Trutnov



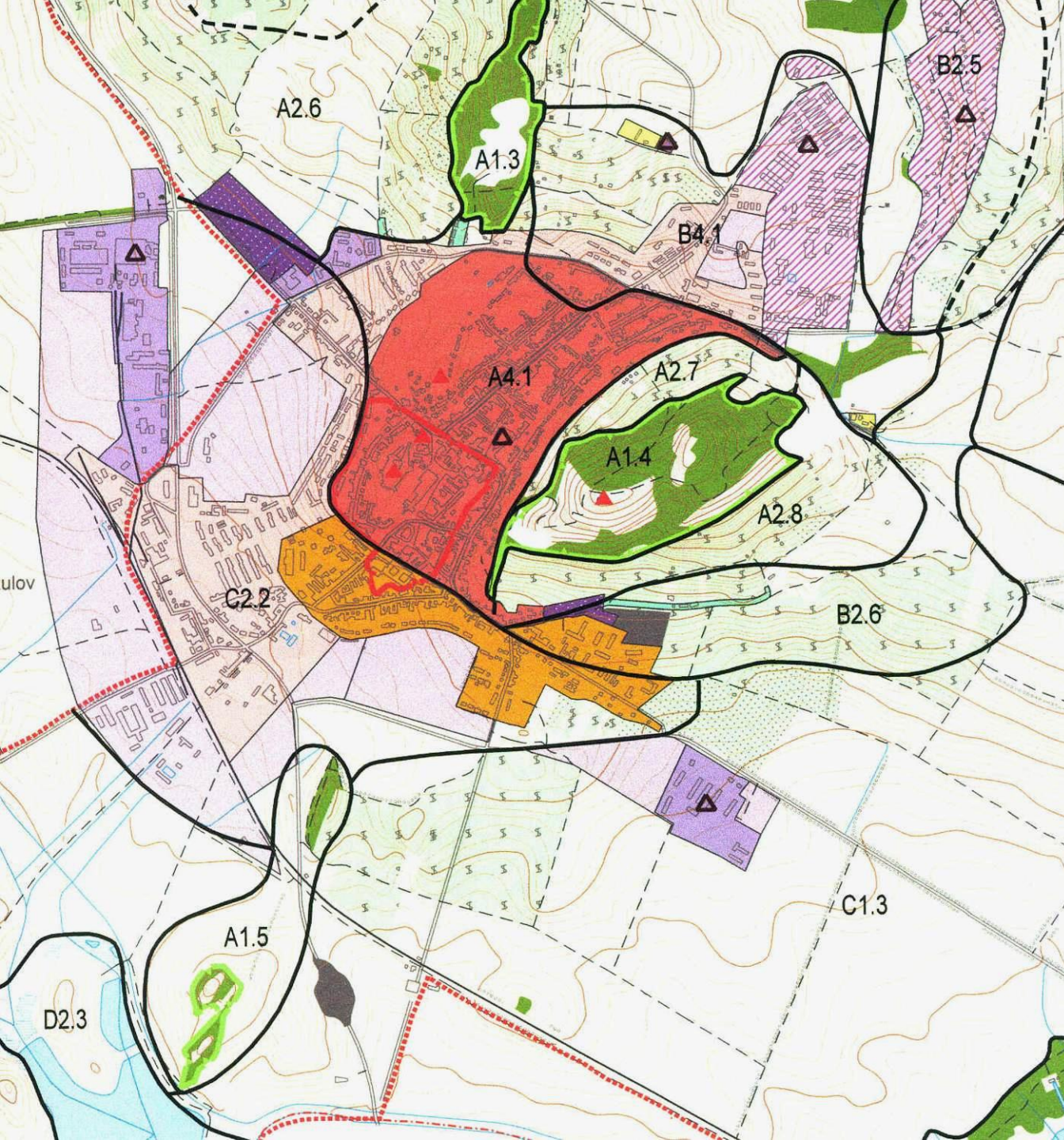
2006 – after WW II. German population was forced to move to Germany.
Is it nicely?



Evaluation of Pálava Landscape protected area

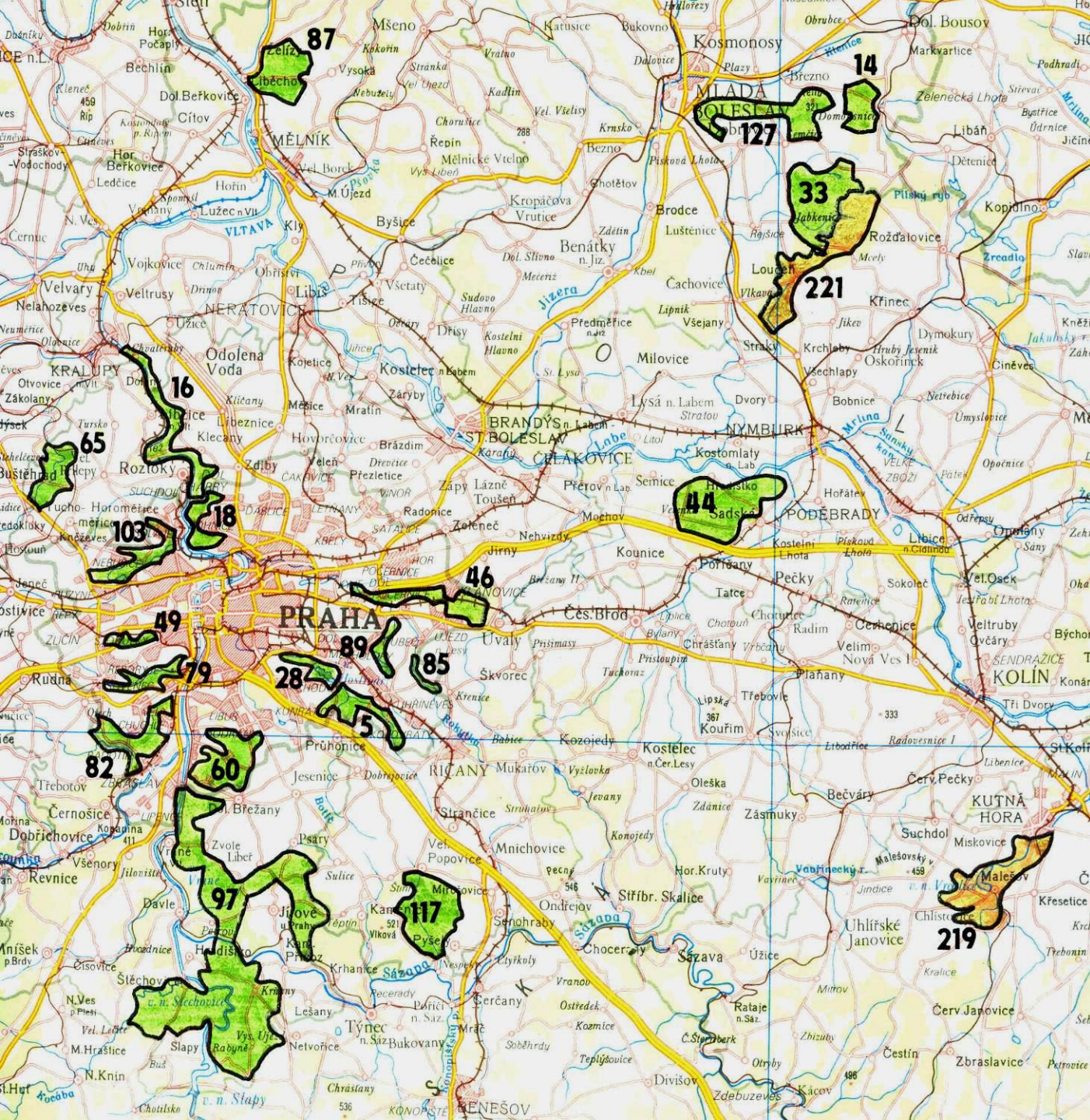
Important dominants and views

Only for seminar work



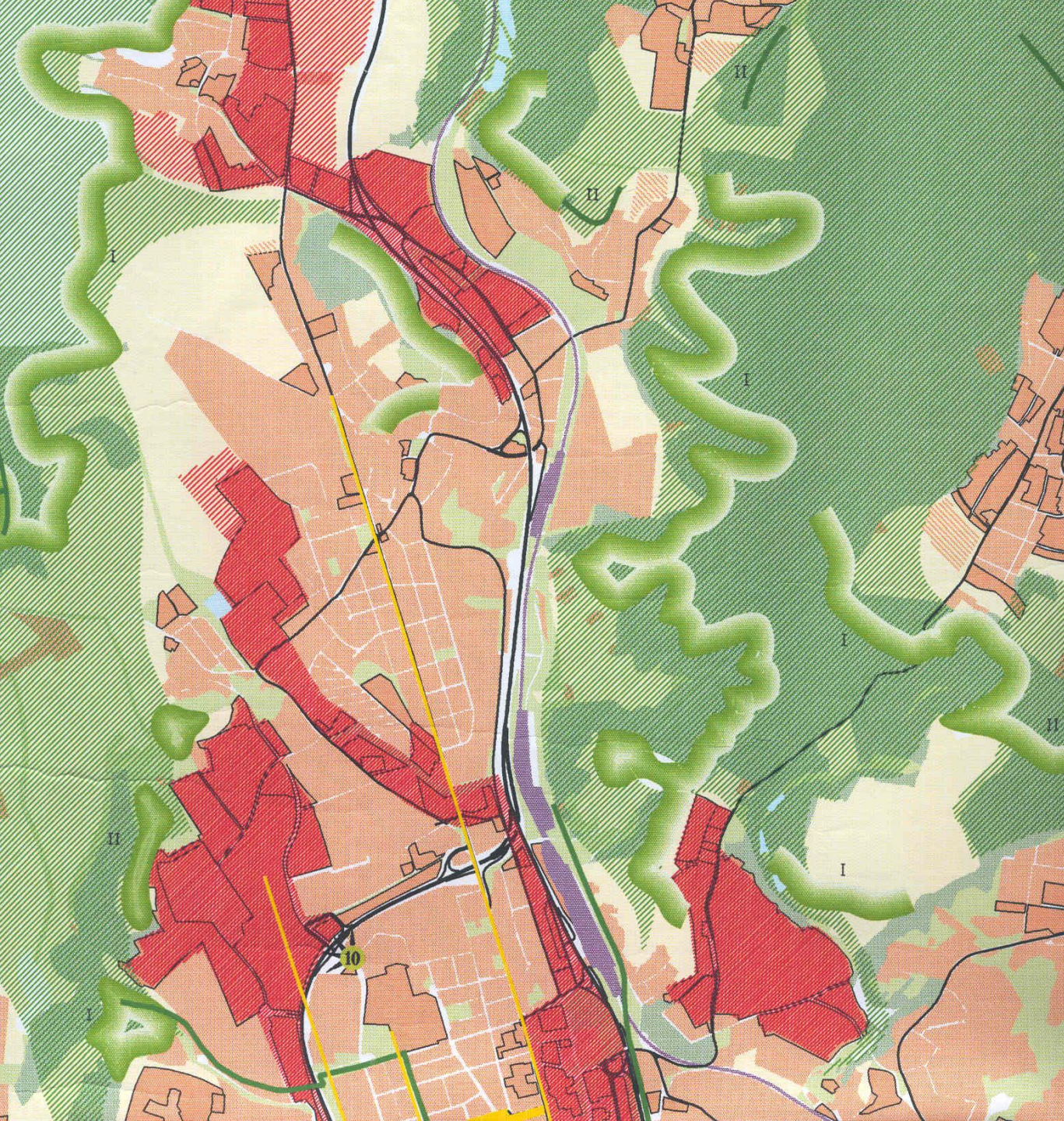
Zones of
specific
Landscape
protection –
regulations
of
development
– the goal of
this
evaluation

Text necessary to
the exam



Landscape
shape
protection
areas
close to
capital
Prague

Not necessary to
the exam



Old Urban
plan of city
Brno –
„Green
horizonts“ –
not to be
built up.

Only for seminar
work

Mass tourism: Visual pollution.
Prevent this. Local people makes protests.
Venetia, Italy.



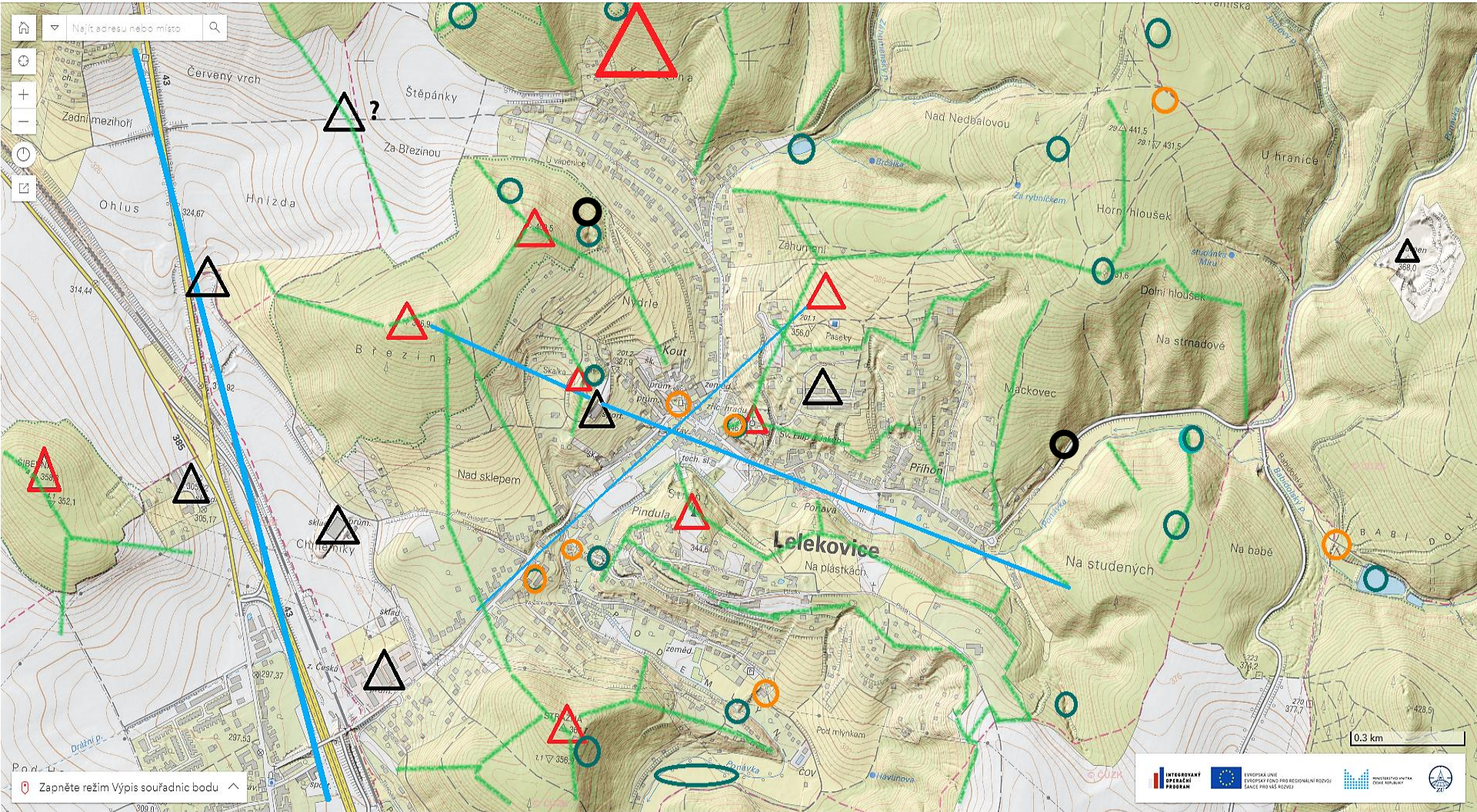
Seminar work - Evaluating of the Landscape shape (features)_1

- 1. step: Choosing of your part of Landscape ca 2 – 4 km²
- 2. Accepting your territory by me, setting up the borders
- 3. Distinguishing of Landscape dominants – positive (hilltops, high rocks, church towers, castles, cloisters, great single tree) and negative (factory chimneys, high agricultural storehouses ...)
- 4. evidence of interesting and important localities – natural (more or less positive) and artificial (negative or positive). Negative – rubbish dump, destroyed buildings, terrible localities.

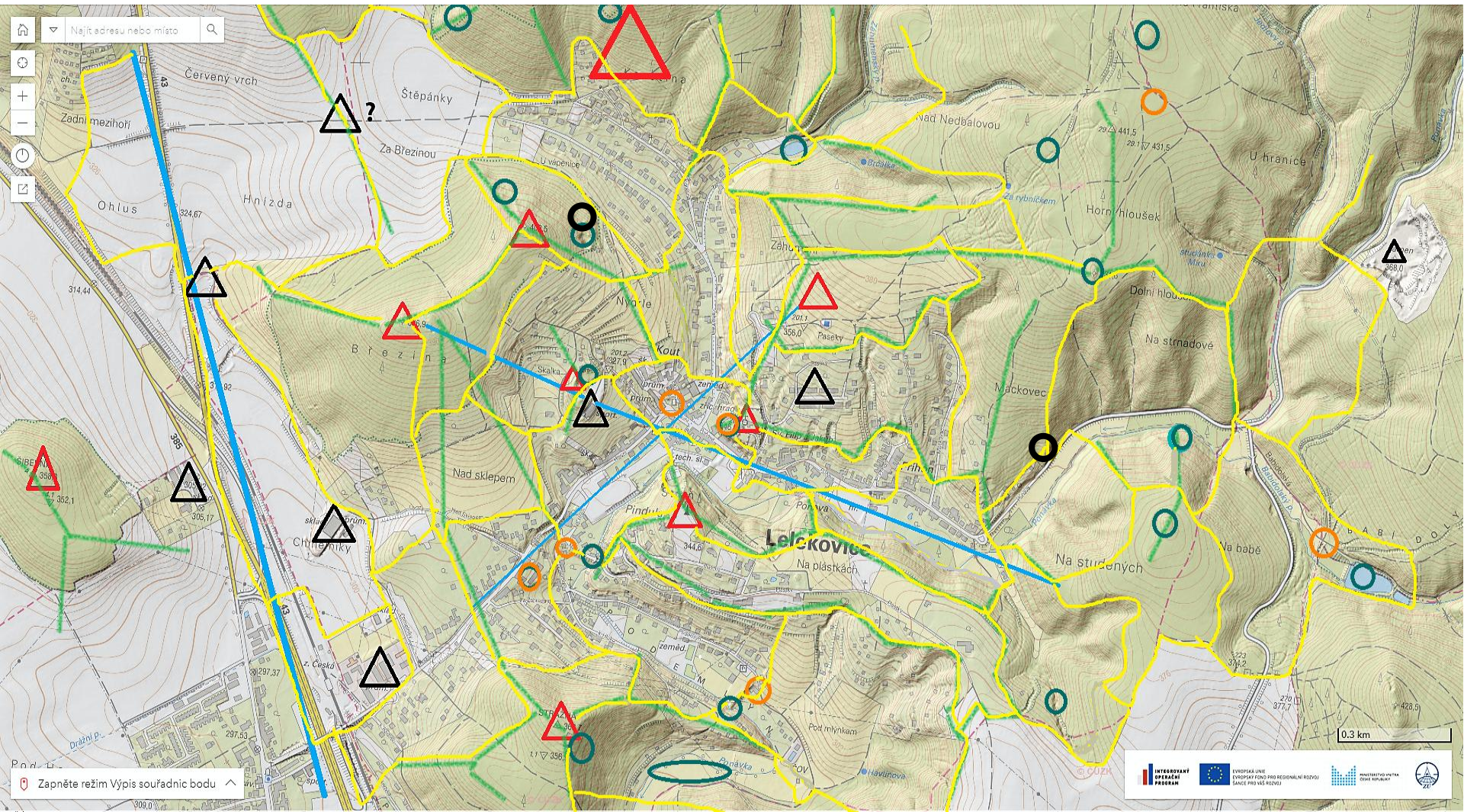
Seminar work_2

- 5. distinguishing of important horizons = borders of view (mountain crests, border of a forest, windbreaks, border of compact build town ...) – important
- 6. Distinguishing of Landscape units
- 7. Characterization of the units – text, ca 12 rows each, especially evaluation of values. Give points 1-5 for nature values and uniqueness, points for cultural–historical values, points for aesthetic values. And make a sum of the points.
- 8. Write your points to each Landscape unit in your final map and give it a specific weak colour.

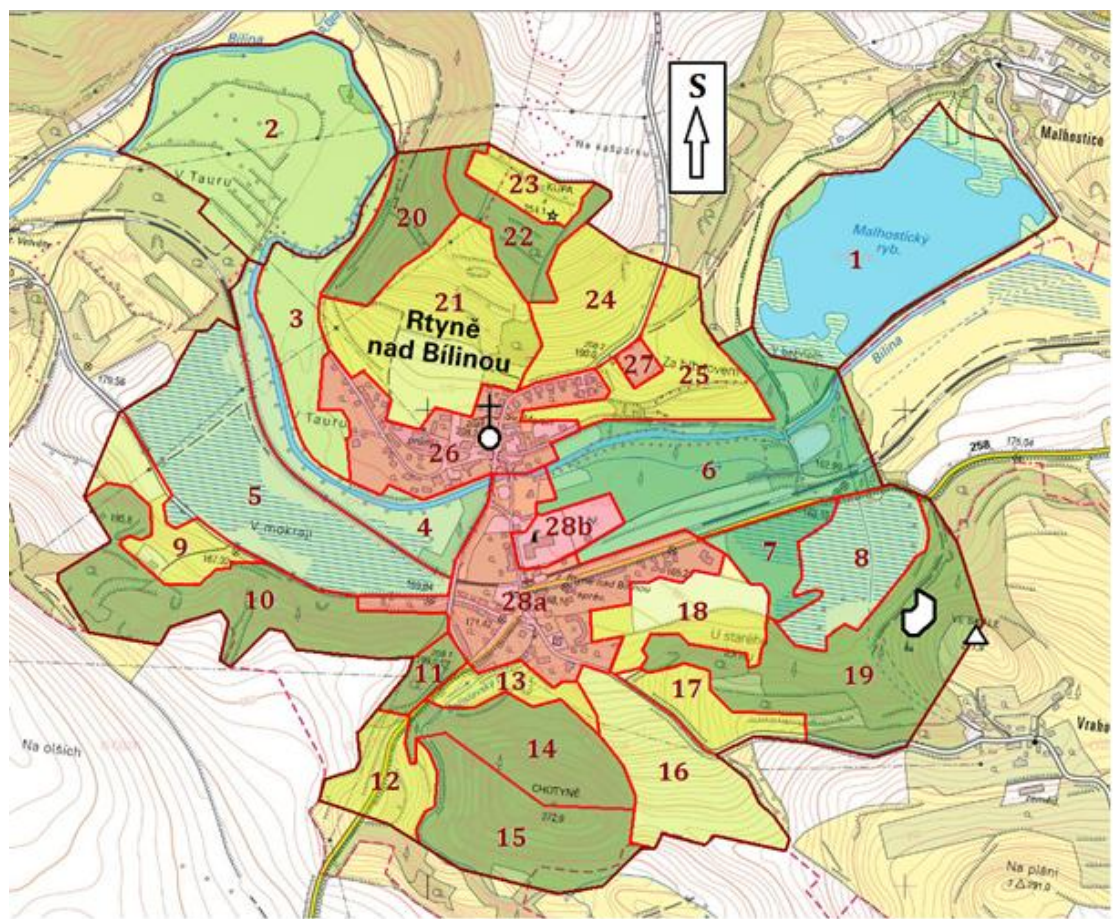
1. Inventory: Distinguishing Landscape dominants, landscape axis, horizons and important localities






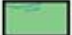



2. Delimitation of elementary Landscape unites (localities)



Example of the map



Kategorizace jednotek krajinného rázu

-  Hranice základní kraj. jednotky
-  Hranice nadřazené kraj. jednotky
-  Trvale zamokřené nivy s převahou rákosových porostů
-  Trvale zamokřené nivy s převahou dřevin
-  Lesní porosty
-  Zemědělská půda
-  Zástavba obce



Dominanty

0 100 200 400 m

Thank you for your attention!

- Black and white photo of Krkonoše (Giant) Mts. taken of book:

PAVEL KLIMEŠ (2007): Krajina
Krkonoš v proměně století. Veselý
výlet, KRNAP.

Author of photographs from 21. Cent. is Ctibor
Košťál.