

# Natural elements of Landscape: Vegetation



**RNDr. Martin Culek, Ph.D.**  
**Geographical Inst., Fac. of Science, MU, Brno**

# Vegetation\_1: The importance

- **Vegetation** – very visible, quickly changing – succession, changes by Man.
  - very important subject of Landscape evaluation
  - easy vulnerable but
  - sometimes making harms to other elements and Man: Invasive species, esp. trees, weeds. Hiding artefacts and rocks.
- **Principle A:** 1. The more huge and isolated, the more important
  - 2. The closer to horizons or edges, the more important
- **Principle B:** Vegetation in Landscape – respecting ecotope!  
Why: illustration of specific Landscape character, could emphasize it!
- **Examples** – projects of planting trees along roads, Austrian Highways
- **Exceptions** – parks and alleys in towns and cities -
  - - It is mostly a mistake to use common trees in artificial environment in cities. OK in villages.
- In protection of Landscape shape ± problems of spreading the not native species, mostly from other Continents - Changing the Landscape. In Central Europe spontaneous: *Robinia pseudoaccacia*, *Ailanthus altissima*, *Acer negundo*. Planted: *Picea pungens*, *Juglans nigra*, *Thuja plicata*, etc.
- But: Spruce plantations on Bohem.- Morav. Highland instead of former beech: Yet for 170 years. People accepted that and Painters painted – to change it?





Vegetation of bushes of dwarf (mountain) pine on boulders 600 m below mountain pine tier – caused by cold cryptoclimate among boulders. Presents this Anomaly.



Mountain  
peat  
bog

Specific  
Vegeta-  
-tion  
in  
rings.

Giant  
Mts.





# Vegetation\_2: Composition of woody vegetation

- **Vegetation according to area:**
- **Large forests, medium size** ( $\leq 1 \text{ km}^2$ ), **groves** ( $\leq 1 \text{ ha}$ ), **group of trees** (up to 20),
- **Stripes** (e.g. bank vegetation), **lines** (one or more rows), parkway, alley – also in forests! – road to castle, hunting hut
- **solitary tree**, also in forests (e.g. very old tree)
- Bushy groves
- **Ecotone** – on border of very different vegetation, e.g. forest–meadow. Ecological and biodiversity importance, but also for Landscape shape:
- Positive: Hiding the tree composition inside forest, mostly more colourful, changing during year (flowers, leaves).
- In forest-field edge may be negative: Thorny, alien species, poor colours, one species, ruderal vegetation.
- **Indentation of forest edge, meadow edge** **x** arondation – for economy better straight edge, for Landscape shape indented one



# Vegetation\_3: Info about History

- In evaluation of vegetation good to know: History of the vegetation – old maps, photographs, chronicles, old aerial images, memories of old peoples.
- If not - Deductions, Analogues
- If too complicated or extremely important, in parks – ask specialist
- The older and more natural the vegetation is, the more important
- **Vegetation itself also „speaks“ about History:**
- **Old trees** (how old are they?) – **Memory of Landscape, Memorials for people**
- Old trees also: Shade for people, orientation point – well accepted.
- In forest – maybe tree of primeval species, information for scientists
- **Orchards** – Young, low, highly productive, large, fenced – not so valuable
  - Old fashioned (high trunk), extensively used, grassed with flowers, without fertilizers, small – more valuable, also old tree gene pool, old types of fruits ↔ history of Man





Former  
pasture –  
with  
protected  
trees and  
bushes  
needs  
some care.

Nature  
reserve  
Děvín,  
Pálava  
South  
Moravia





So called  
Beech of Mr. Million,  
ca 15 km N of Brno

Isolated old tree in a  
forest – also important  
for natural and local  
history values



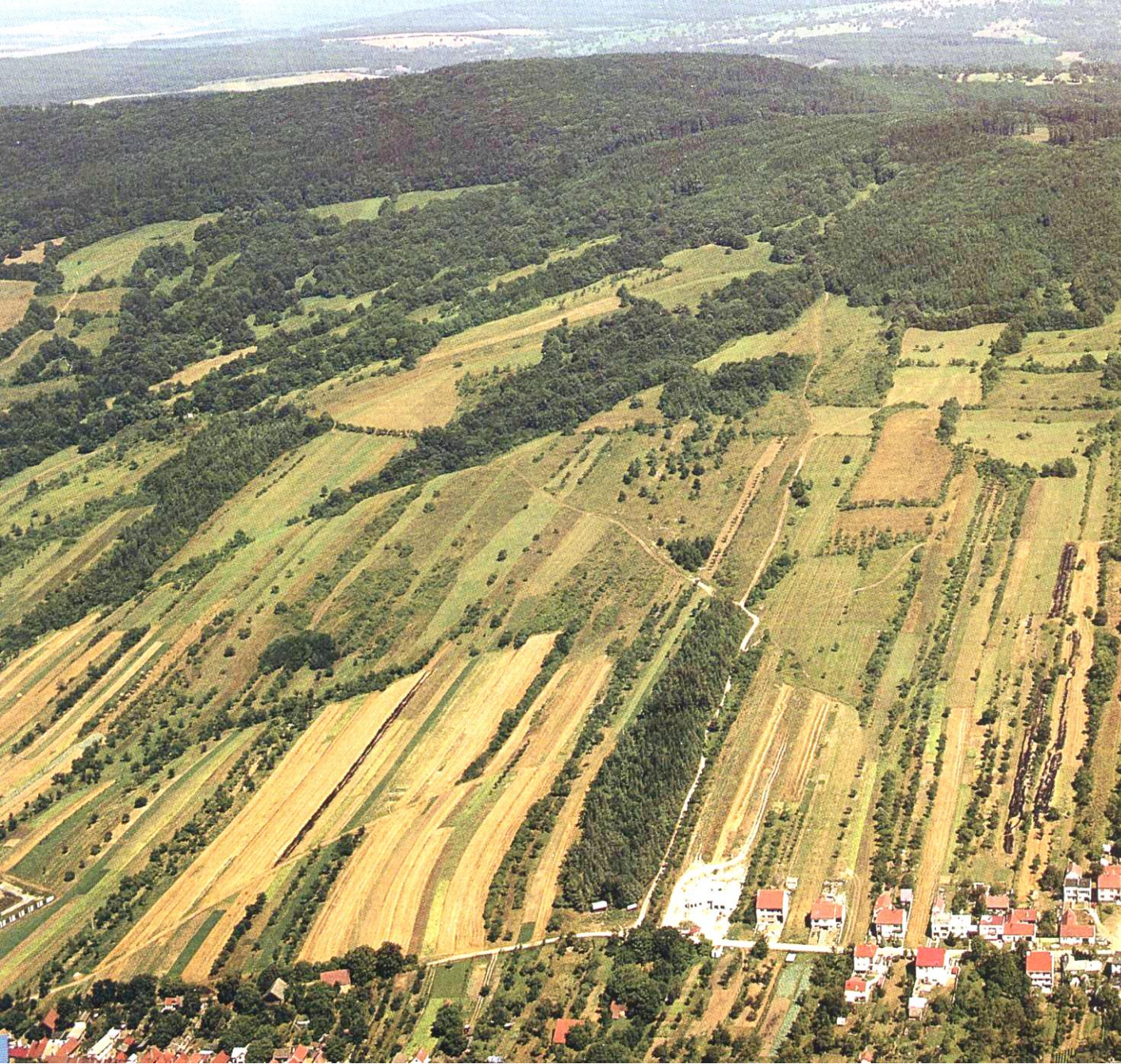
# Trees accentuate fields division:

Historical field system – 14. Century

Hlásná Lhota village in Southern Bohemia. But now overgrowing







Historical organization and shape of fields – now only valuable rests.  
Also partly abandoned and overgrown.

White Carpathians Mts., village Velká n./ Veličkou, Eastern Moravia



# Southern Moravia – small private vineyards – nice, motley, - close to village Velké Pavlovice



Foto J. N.



# **PROBLEM OF VEGETATION O蕨RGROWING**

- on abandoned meadows, pastures, fields.

In Central EU mostly negative, in devastated Landscapes OK

Destruction of Natural reserve for flowers, eastern Moravia:





# Problem of vegetation overgrowing



• 1938, ANTI Svoboda nad Úpou

**Year 1938** - Giant Mts., village Mladé Buky-Sklenářovice. Foto ANTI





**Year 2006,** today even more

LOUKY / WIESEN



# Parkway – a cathedral with windows to the Landscape



Walter Staudte, •1938, AA

**1938** - Giant Mts., village Rokytnice nad Jizerou

Foto Walter Staudte





**And in year 2006:** The row of trees partly persisted, but ...





Nature  
Reserve -  
Meadows in  
the White  
Carpathians  
Mts.  
in eastern  
Moravia

Trees and  
bushes:  
In places  
appropriate,  
in places to  
much ...



„Disappearing rocks and stones“ – covered by vegetation –  
in majority of landscapes perhaps **a mistake**



Central Bohemian Hilly Land, ca 500 m above s.l., „granit“ Landscape



# Rock outcrops cleaned by pasture - OK





Good practise exist – Austria:







Haná field plains – for a thousand years without trees: Is present development OK? Ecologically yes. And the Landscape shape?





**A Biocorridore in Czechia** – Vracov, planted in years 1990-1991

Strait biocorr. lines OK in such geometric Landscape.

But in soft-grained, rolling?

Foto from the year 2019





## Regional biocorridore (=wider)

In village Loděnice close to Pohořelice, southern Moravia  
– yr. 2000, length 2 km, not one segment, but several  
in various direction - OK

Foto M. Culek, 2001





Biocentrum of reg. importance at village Bedihošť, Haná field plains, Central Moravia. Absence of groves is so bad, that this is improving.  
Year 2001





Year 2019





**Bad:** Black locust (*Robinia pseudoaccacia*) – from Eastern USA  
Prevent it.



# Thank you for attention to the Vegetation ....☺.

- Part of used coloured snaps originate from Edition Chráněná území ČR („Protected territories of Czechia“), from open Internet and from an Archive of the author.
- Black and white snaps from Giant Mts. (Northern Bohemia) originate from publication P. KLIMEŠ (2007): Krajina Krkonoš v proměně století. Veselý výlet, KRNAP.
- Thanks to everyone.